



GRÄNGES EXPLORATION AB  
CANADIAN DIVISION

GEOCHEMICAL REPORT

ON

"R" AND "S" CLAIMS

OMINECA MINING DEVISION  
FAWNIE NOSE MOUNTAIN AREA

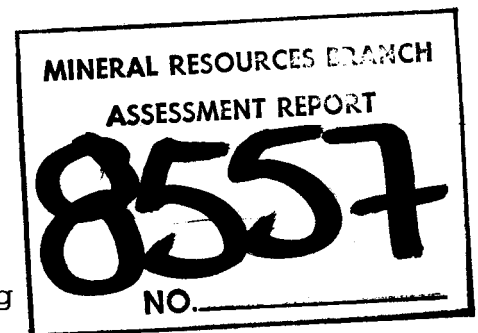
LATITUDE: 53° 16'

LONGITUDE: 125° 12'

N.T.S. 93 F/ 6E

OWNER and OPERATOR

Granges Exploration Aktiebolag  
1110 - 625 Howe Street  
Vancouver, B. C.  
V6C 2T6



Date of Work: May 24th - June 12, 1980

Dated at Vancouver B. C.  
September 12, 1980

Author: G. W. Zbitnoff, (P. Eng.)

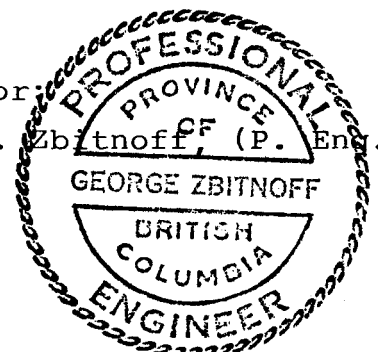
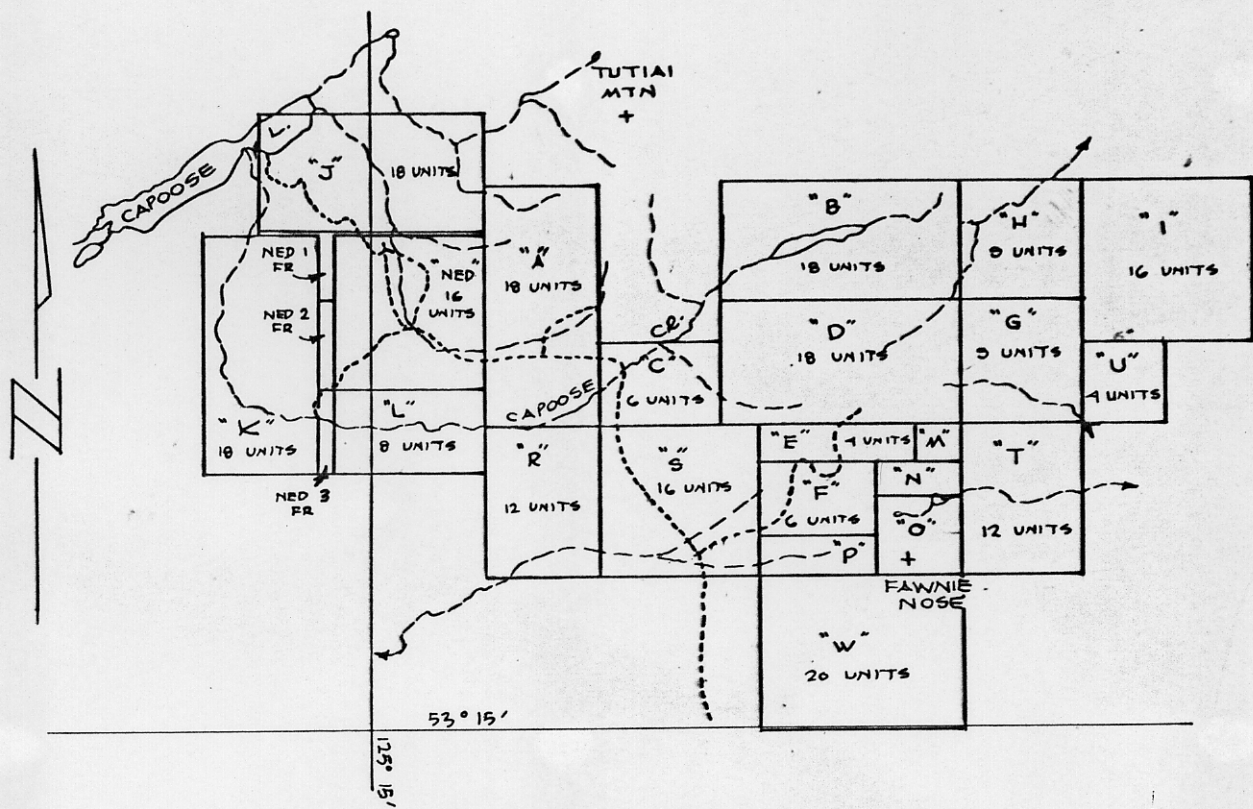


TABLE OF CONTENTS

|  |       |
|--|-------|
| Location Map .....                       | front |
| Introduction .....                       | 1     |
| Claims .....                             | 1     |
| Location and Access .....                | 1     |
| Geology .....                            | 2     |
| Survey Ground .....                      | 2     |
| Geochemical Survey .....                 | 2     |
| Discussion of Results .....              | 3     |
| Conclusion .....                         | 4     |
| Recommendations .....                    | 4     |
| Expenditures .....                       | 4     |
| Statement of Author's Qualifications ... | 5     |

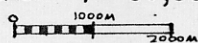
ENCLOSURES

- Map 1 showing said geochemical survey for  
lead and zinc. Scale: 1: 5000
- Map 2 showing said geochemical survey for  
molybdenum and copper. Scale: 1: 5000
- Map 3 showing said geochemical survey for  
silver and arsenic. Scale: 1: 5000

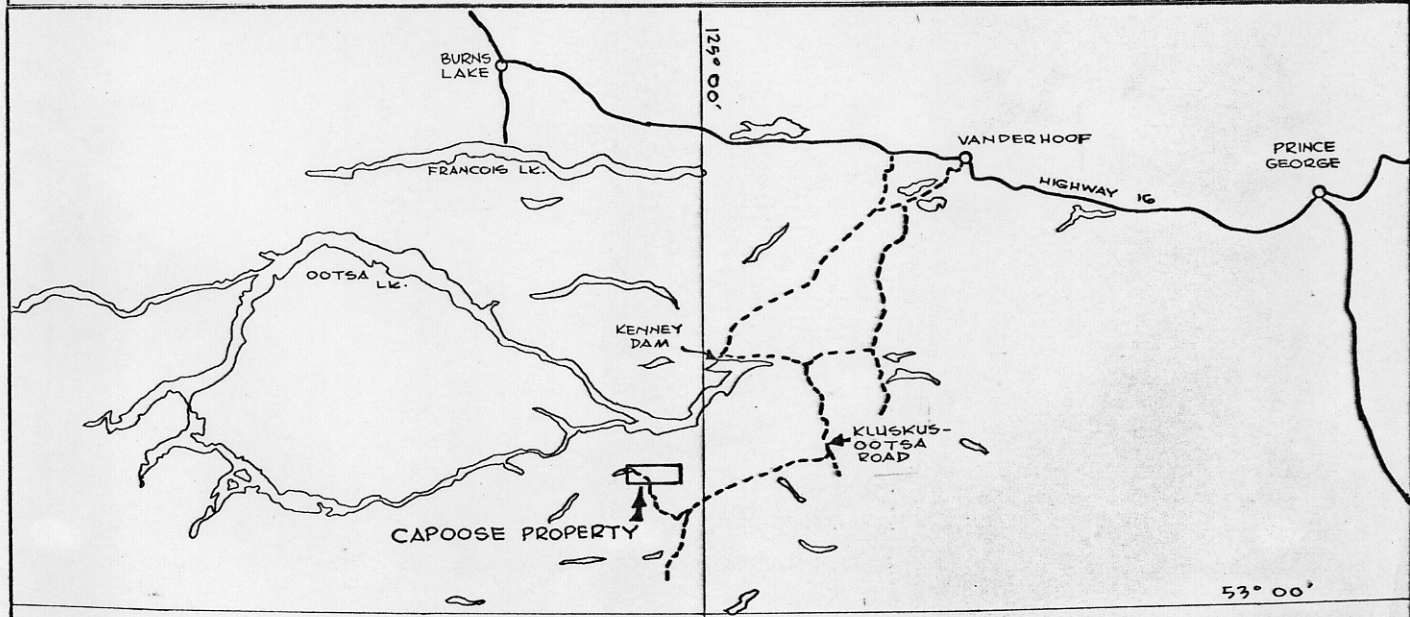


**CLAIM MAP**

SCALE 1:100,000

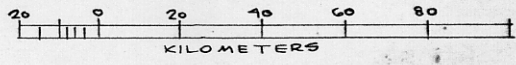


N.T.S. No 93F-G



**LOCATION MAP**

SCALE 1:1,500,000



## INTRODUCTION

During the period of May 24th to June 12, 1980 Granges Exploration Aktiebolag's three-man crew worked on the "R" and "S" claims.

The exploration program consisted of running grid lines across the claims at 100 meter intervals and collecting geochemical soil samples every 100 meter intervals along the lines. These samples were assayed for lead, silver zinc, molybdenum, arsenic and copper.

These surveys were conducted by Granges Exploration Aktiebolag in an effort to locate zones of interest which would require further investigation.

## CLAIMS

The claims covered in this report and their relevant dates are as follows:

| <u>Claim Name</u> | <u># of Units</u> | <u>Tag #</u> | <u>Record #</u> | <u>Date of Record</u> |
|-------------------|-------------------|--------------|-----------------|-----------------------|
| "R"               | 12                | 29208        | 2115            | Sept. 14, 1979        |
| "S"               | 16                | 29207        | 2116            | Sept. 14, 1979        |

## LOCATION AND ACCESS

The "R" and "S" claims are located in central British Columbia approximately 470 km north north-west of Vancouver, B. C. The claims lie approximately 115 km south-east of Vanderhoof, B. C. The claims are located in the Omineca Mining Division having a latitude of 53° 16' and a longitude of 125° 12'.

The "R" and "S" claims are accessible by road using the Plateau Mills Kluskus - OOTSA road from Vanderhoof for a distance of 150 km where it is joined by the Capoose Lake road which is passable to four-wheel drive vehicles and tracked equipment.

The "R" and "S" claims lie on the west flank of the Fawnie Range. The elevations range from 1335 meters

in the southwest corner of the "R" claim to 1700 meters in the northeast corner of the "S" claim. A large portion of the aforementioned claims lie near timberline which is quite stunted.

GEOLOGY

According to G.S.C. Memoir 324, Nechako River Map Area, British Columbia, the "R" and "S" claims are underlain by the Ootsa Group. The Ootsa Group consists of basalt, andesite and related tuffs and breccias. Its age is shown as Cretaceous and (?) Tertiary.

Much of the areas are overlain in the low lands by swampy meadows, and the side slopes are covered by talus, glacial till and gravels. However, there are locations along the eastern slopes of the "S" claim where andesite outcrops.

SURVEY GRID

The base lines which control the grid lie in an east-west direction. The 00 baseline lies along the south boundaries of the "R" and "S" claims with baseline 10+00 N running through the middle of the "R" claim, and a tie line at 20+00 N near the north boundaries of the "R" and "S" claims. Cross lines are run at 100-meter intervals or begin at the southwest corner of the "R" claim, and continue to 32 E on the southwest corner of the "S" claim.

The baselines are brushed out to facilitate access as some areas have a dense growth. Cross lines, which are marked by blazing and flagging, were turned off by Brunton compass and hip chainer.

A total of 7.9 km of tie lines and baselines and 64.0 km of cross lines were completed on the "R" and "S" claims.

GEOCHEMICAL SURVEY

A total of 672 samples were collected on the

"R" and "S" claims. These samples were assayed for silver, copper, lead, zinc, arsenic and molybdenum.

Soil samples of the upper "B" horizon were obtained at an average depth of 0.3 meters with the use of augers. These samples were taken at 100-meter intervals along picketlines. The samples were then placed in kraft soil envelopes and delivered to ACME ANALYTICAL LABORATORIES LTD., 852 Hastings Street, Vancouver, B.C. The samples are dried for approximately 16 hours at 75° centigrade and sieved to -80 mesh. A 0.5 gram sample is digested with diluted aqua regia in a hot water bath for one hour and diluted with demineralized water. The determination of copper, lead, zinc, arsenic, molybdenum and silver are determined by atomic absorption from the solution. Silver is determined by atomic absorption using a background correction.

#### DISCUSSION OF RESULTS

A coincident silver, lead, zinc, copper and molybdenum anomaly was disclosed by the survey on the "R" and "S" claims. This anomaly commences from the north-east corner of the "S" claim and runs diagonally towards the south-west corner of the "S" claim. High values in all metals tend to be erratic. Values in the metals assayed in parts per million 630 Cu, 74 Pb, 2200 Zn, 54 Mo and 26 As, Silver 96 part per 10 million. The arsenic anomalies are erratic and do not tend to coincide with other geochemical anomalies.

There is also a copper geochemical anomaly originating from Capoose Creek along the north boundry of the "R" claim and trending north-south through to the centre of the "R" claim. No other metals coincide with this anomaly.

Sets of maps for the "R" and "S" claims are enclosed in the back of the report.

CONCLUSION

During May and June, 1980 a soil survey was carried out over the "R" and "S" claims. Several anomalous conductors have been located on these blocks. As the glacial movement was in a east-northwest direction, it is anticipated that these anomalies have been caused by a bedrock source or by ground waters carrying the enriched solutions from a higher elevation on the Fawnie Range.

RECOMMENDATIONS

It is recommended that further work be carried out over the anomalous areas. A closer spaced geochemical grid with a corresponding geological survey is recommended over these areas to determine whether the anomalies are of bedrock nature.

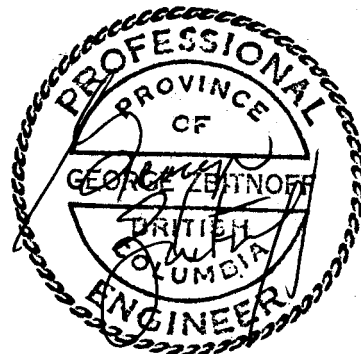
EXPENDITURES

"R" and "S" CLAIMS

Personnel -

|                    |                       |                    |
|--------------------|-----------------------|--------------------|
| Ken Taylor         | May 24th to June 12th | \$1,187.40         |
| Ron Wintermeyer    | "                     | 1,192.00           |
| D. W. Wilson       | "                     | 1,083.00           |
| Accommodations     |                       | 553.96             |
| Transportation     |                       | 3,124.90           |
| Geochemical Assays |                       | 3,958.67           |
| Report Preparation |                       | 1,261.96           |
| TOTAL "R" and "S"  |                       | <u>\$12,361.89</u> |

GZ/jc  
September 12, 1980



STATEMENT OF QUALIFICATIONS

Name: Zbitnoff, George Wm.

Profession: Geologist

Professional

Associations: Member of the Association of Professional Engineers of the Province of Manitoba since 1969.

Member of the Association of Professional Engineers of the Province of British Columbia since 1973.

Experience: Pre graduation experience in geology with the Department of Mineral Resources.

Two and one half years, field geologist with Hudson Bay Exploration and Development, Central Canada.

Six years, field and Resident Geologist with Noranda Exploration Ltd., Central Canada.

Nine years geologist and Assistant Manager with Granges Exploration Aktiebolag, Canadian Division.

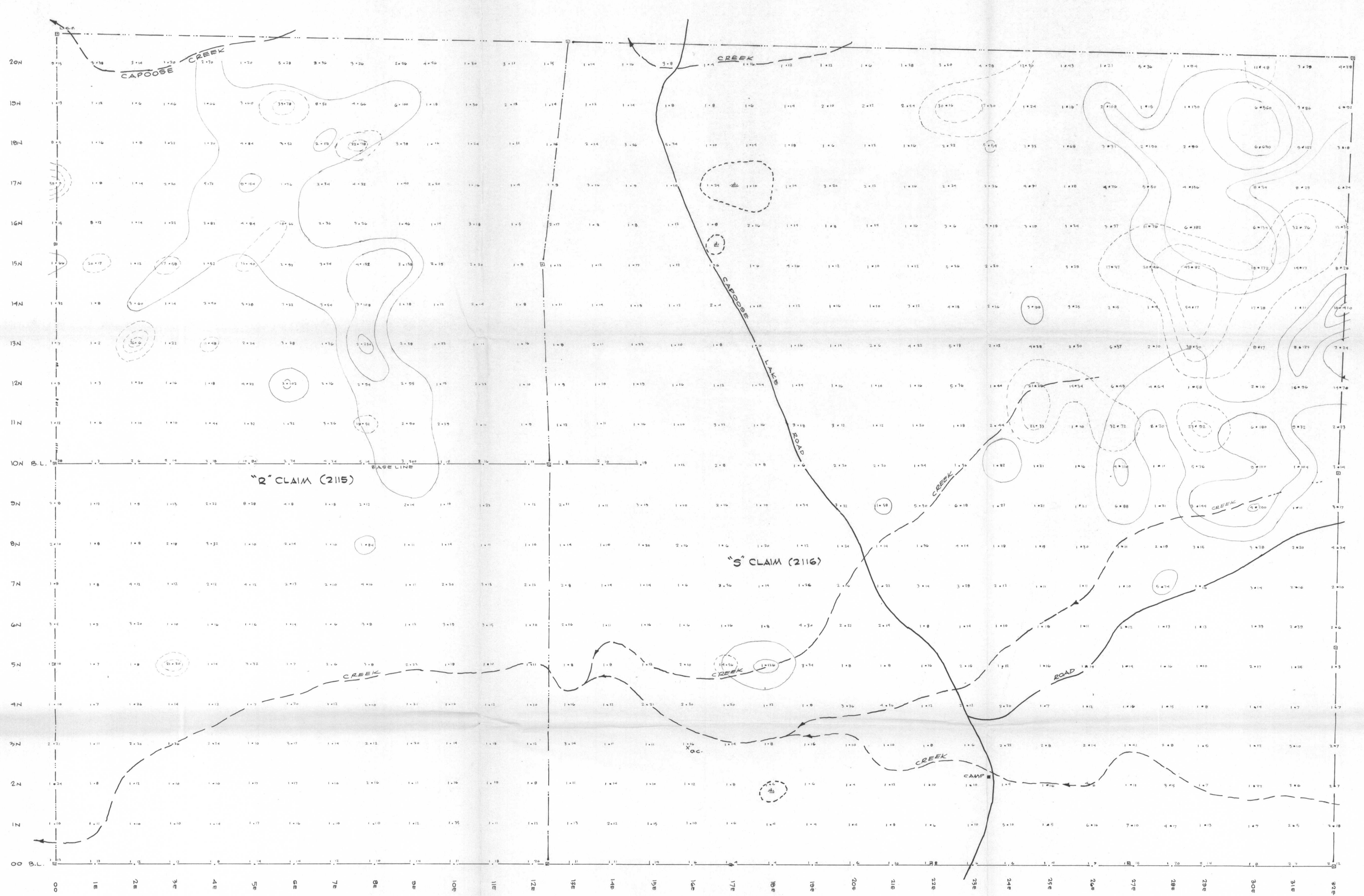
Active experience in all geologic provinces of Canada and parts of the United States and Mexico.







8557



— CONTOUR INTERVAL —  
 M: 10 - 20 - 40 - 80 ETC  
 Cu: 50 - 100 - 200 - 400 ETC

|  |   |
|--|---|
|  | DRAWN BY: A.P.<br>DATE: JULY 1980<br>M. IN REG. 200001188<br>S. IN REG. 200001188 |
| LOCATED CLAIM POST<br>CLAIM BOUNDARY LINE<br>OUTLINE OF ANOMALOUS AREAS<br>SAMPLE LOCATION |   |

**GRANGES EXPLORATION AB**  
 CANADIAN DIVISION  
 VANCOUVER OFFICE

**SOIL GEOCHEMICAL SURVEY FOR**  
**MOLYBDENUM AND COPPER**  
 CLAIMS "Q" (2115) & "S" (2116)  
**CAPOOSE JOINT VENTURE**



MINERAL RESOURCES BRANCH  
 ASSESSMENT REPORT  
**8557**

MAP No. 2 of 3  
 SCALE: 1:5000  
 PROJECT No: 70113  
 N.T.S. No: 93 F-6E

