

GEOCHEMICAL REPORT

- on the -

CAPER CLAIM

- for -

HERON RESOURCES LTD.,
6th. Floor-890 W. Pender Street,
Vancouver, B.C.

LOCATED: 24 km. NNW of Merritt, B. C.
120°47'W; 50°23'N.
NTS - 92I/7W.

MINERAL RESOURCES BRANCH
ASSESSMENT REPORT

NO.

8595

PREPARED BY:
Kerr, Dawson and Associates Ltd.,
#1-219 Victoria Street,
KAMLOOPS, B. C.

John R. Kerr, P. Eng.,
February 5, 1981.

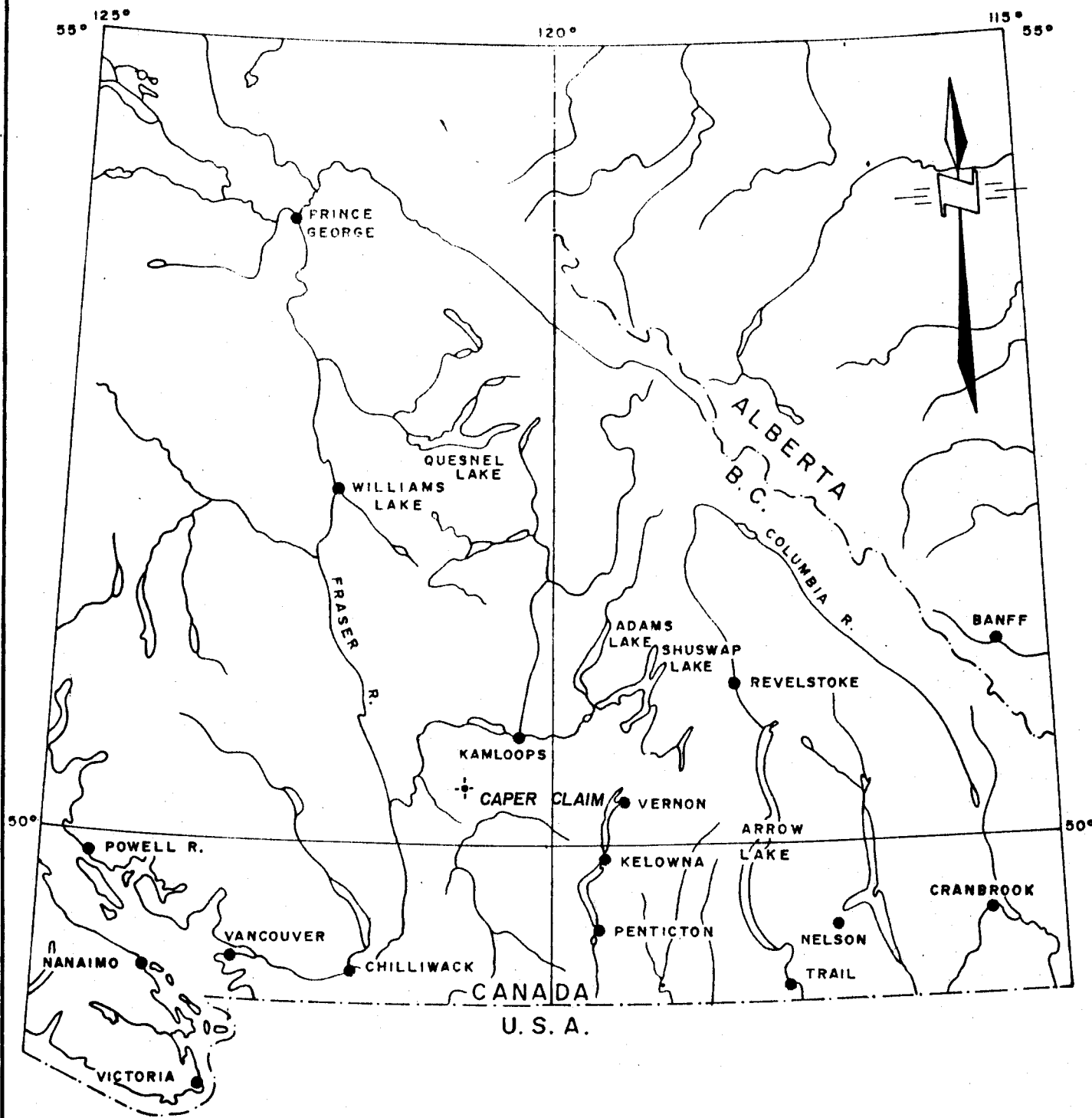
INDEX

	<u>Page No.</u>
SUMMARY	1
INTRODUCTION:	
General Statement	3
Location and Access	3
Topography and Vegetation	4
Property	4
History	5
GEOLOGY	7
GEOCHEMISTRY	9
RECOMMENDATIONS	13
APPENDIX A: - Cost Statement	
APPENDIX B: - Geochemical Data	
APPENDIX C: - Writer's Certificate	
LIST OF MAPS:	
Figure #223-1: - Location Map	
Figure #223-2: - Index Map	
Figure #223-3: - Cu Distribution in Soil	
Figure #223-4: - Ag Distribution in Soil	
Figure #223-5: - Au Distribution in Soil	

SUMMARY

- (1). The Caper claim (9 units) covers copper mineralization within rocks of the Guichon Batholith. Mineralization was discovered by H. H. Shear for Earlcrest Resources Ltd. in 1962, and offers potential for a major porphyry copper deposit.
- (2). The principal showings are located in a major fault system, traversing the property in a N-40°W direction. Rocks within the system are highly altered, including chlorite, epidote, sericite, secondary K-feldspar, kaolinite and quartz. Copper minerals observed are chalcocite and malachite.
- (3). A geochemical survey completed over the entire claim area during 1980, indicates several very strong geochemical anomalies in copper with associated silver and gold values. Copper values ranged up to 10% Cu (100,000 ppm), which is unusually high for normal copper content in soil.

(4). Further work on the claim is certainly justified, recommendations include verification of high copper anomalies, some limited detailed geochemistry, an I. P. survey, geological mapping and trenching. Diamond drilling would be contingent upon results of the above work.



HERON RESOURCES LTD.

LOCATION MAP
CAPER CLAIM

NICOLA MINING DIVISION, B.C.

Date: Feb. 1980.

Scale: 1" = 64 Miles

Dwn by: W.G.

Dwg no. 223-1

INTRODUCTION

General Statement:

The Caper claim was located in September, 1976 to cover copper mineralization in a highly altered and sheared zone of the Highland Valley Phase of the Guichon Creek Batholith. H. H. Shear, P. Eng., discovered the mineralization for Earlcrest Resources Ltd. in 1962, and in 1976 restaked the ground as the Caper claim. The claim has recently been sold to Heron Resources Ltd. The writer compiled a report in February, 1980 (amended October, 1980) outlining a recommended exploration programme. The geochemical portion of this programme was completed during October, 1980. This report compiles the geochemical data.

Location and Access:

The claim is located on Broom Creek, 24 km. NNW of Merritt, B. C. and 55 km. SW of Kamloops. Geographic coordinates are 50°23'N; 120°47'W (NTS 92I/7W).

Access to the property is best gained from Merritt along the Craigmont Mine road to the minesite, and thence north a distance of 13 km. to Broom Creek. A four-wheel drive dirt road, heads northwest along Broom Creek, a distance of 3 km. to the center of the claim and principal workings.

Topography and Vegetation:

Broom Creek carves a steep-walled valley in the Nicola Plateau. Topography along the valley walls is locally very precipitous. Total relief on the claim is over 200 meters, ranging from 1,190m (a.s.l.) at the LCP in Broom Creek to over 1,400m (a.s.l.) in the SW and NE corners.

Vegetation consists of thin to moderate forest cover, consisting of jack pine, fir, hemlock, balsam, and some poplar.

Property:

The property consists of one claim staked under the Modified Grid System.

<u>Claim Name</u>	<u>Record No.</u>	<u>No.of Units</u>	<u>Mining Div.</u>	<u>Expiry Date</u>
Caper	185	9	Nicola	Oct.27,1987.*

The recorded owners of the claim are H. H. Shear (50%) and D.F. Pasco (50%). The claim is under purchase agreement to Heron Resources Ltd.

* on approval of this report.

History:

Prospecting, exploration and mining in the Highland Valley dates back to the turn of the century. The Aberdeen Mine on Broom Creek, approximately 2 1/2 km. SE of the Caper claim, was discovered in 1897, with small shipments of high-grade copper ore being mined between 1906-1916, and during 1928.

There is no early history of exploration on the Caper claim; however, development of the Aberdeen Mine led to prospecting of the area, and probable discovery of some of the copper bearing veins. In 1962, H. H. Shear discovered the principal mineralized zone for Earlcrest Resources Ltd. Earlcrest, during this period, completed a geochemical survey, a limited reconn-

aissance I. P. survey, and drove an adit and inclined shaft into the mineralized zones. In 1973, Craigmont Mines optioned the property, and completed additional geochemistry, and 2 diamond drill holes. Results of the drilling were negative.

GEOLOGY

The geology of the area is well documented on the BCDM preliminary map sheet #30, (1:100,000 scale), Geology of the Guichon Creek Batholith and Highland Valley, Porphyry Copper District, British Columbia, by W. J. McMillan, et al, 1978.

In summary, the very complex, multiphase Guichon Creek batholith intrudes volcanic and minor sedimentary rocks of the Triassic Nicola Group. In the immediate area of the Caper claim, all rocks are part of the Guichon Creek batholith, described on the BCDM map sheet as a fine-medium grained granodiorite of the Guichon variety, and a medium-coarse grained granodiorite of the Chataway variety, both of the Highland Valley Phase of the main batholith.

The claim area has been partially mapped by Craigmont and Earlcrest at a scale of 1":100' (1:1,200). Most of this mapping was completed along road cuts and trenches. From these maps, and observations made by the writer, both the Guichon and Chataway varieties of granodiorite occur on the Caper claim.

In zones, the granodiorite has been highly altered, fractured, brecciated and sheared. Alteration includes sericitization, chloritization, secondary K-feldspar, kaolinization and silicification. Copper occurs, mainly as malachite and chalcocite in surface exposures, within some of these altered rocks.

The main showing is part of a major fault system, which carries a significant content of malachite and chalcocite in a highly sheared, gouged and brecciated granodiorite. Measurements taken at the showing indicate a strike of 130° ; dip $60-70^{\circ}$ SW. If this trend is persistent, the main showing may be part of a major structural feature, which is expressed as the east showing, on the south side of Broom Creek, 500 meters to the southeast.

GEOCHEMISTRY

During the period September 28 - October 20, 1980, a two-man crew employed by Pacer Exploration Services Ltd. of Vancouver, B. C. was engaged to establish a grid and collect soil samples over the claim area. Lines were established at 100 meter intervals across the full width of the claim, with sample stations at 30 meters along all lines. Samples were collected from the "B" horizon of soil where possible, and submitted to the laboratories of Acme Analytical Laboratories Ltd. for geochemical analysis.

All samples were analyzed for Cu, Au, and Ag. An aliquot of the -80 mesh fraction was digested in hot aqua regia to extract the various metals. Metal content was derived by atomic absorption methods.

Sample results were statistically analyzed to determine the various anomalous categories. Because of several very high copper values, any values $> 1,000$ ppm Cu were cut from the statistical analysis. The following is a summary of the statistics:

		<u>Cu (ppm)</u>	<u>Ag (ppm)</u>	<u>Au (ppm)</u>
No. of samples	n	799	799	799
Mean	m	71	0.2	.0068
Standard				
Deviation	s	114	0.7	.0191

This provides for the following geochemical classification:

	<u>Cu (ppm)</u>	<u>Ag (ppm)</u>	<u>Au (ppm)</u>
Negative	0- 70	0-0.2	0-.007
Possibly Anomalous	71-185	0.3-0.9	.008-.025
Probably Anomalous	186-299	1.0-1.7	.026-.044
Definitely Anomalous	> 299	> 1.7	> .044

Results are plotted on individual metal maps (Figures 223-4, 5, & 6), and contoured to the various anomalous classifications.

Several significant anomalies are interpreted from the results, the most interesting being located in the west-central portion of the grid. The anomaly forms a large, arcuate shape, containing a large number of anomalous samples ranging up to 33,000 ppm Cu. There is

an association of silver with this anomaly, with occasional anomalous samples ranging up to 58 ppm Ag. There is little or no correlation with Au anomalies.

A significant anomaly exists in the southwest corner of the Caper claim, on Lines 0+00, 1+00E, and L2+00E. Several definitely anomalous samples exist, ranging up to 10% Cu (100,000 ppm). There is a definite correlation of Au and Ag with the high copper values, ranging up to 42.5 ppm Ag and 355 ppb Au.

Several other isolated copper anomalies exist within the claim area, some indicating an erratic correlation with gold and silver.

All definitely anomalous zones are worthy of further follow-up exploration. Some of the copper values reported in soil are unusually high, and contamination from various laboratory or field sources should be suspected. Follow-up work should include verifying these high results both in the field and in the laboratory.

The geochemical anomalies, if verified, provide excellent targets for possible discovery of a major porphyry copper (gold-silver) deposit, or a high-grade structure controlled type of deposit. Rocks of the Guichon variety of the Guichon Creek Batholith are considered excellent hosts for such deposits. The Krane, South Seas, and portions of the Bethlehem deposits all occur in similar rocks.

RECOMMENDATIONS

Recommendations for further work on the property include:

- (1). Verification of high copper values in soil.
Detailed soil sampling in areas of strong copper anomalies.
- (2). Approximately 10 km. of I. P. survey, selected over geochemical anomalies.
- (3). Bulldozer trenching in areas of geochemical anomalies.
- (4). Geological mapping of the claim area.
- (5). Diamond drilling would be contingent upon the results of the above programme.

Respectfully Submitted By:

KERR, DAWSON & ASSOCIATES LTD.,

KAMLOOPS, B. C.
February 5, 1981.


John R. Kerr

John R. Kerr, P. Eng.,
GEOLOGIST

APPENDIX A

COST STATEMENT

COST STATEMENT

PERSONNEL:

Marco Romero, Party Chief, 25 days @ \$100.00/day	\$ 2,500.00	
Frank Rodl, Assistant, 25 days @ \$100.00/day	<u>2,500.00</u>	\$ 5,000.00

ROOM AND BOARD:

54 man days @ \$30.00/day		1,620.00
-------------------------------------	--	----------

4 x 4 TRUCK RENTAL: 1 month		650.00
---------------------------------------	--	--------

GEOCHEMICAL ANALYSIS:

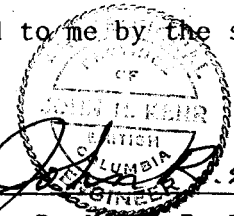
799 samples @ \$5.25/sample		4,194.75
---------------------------------------	--	----------

MISCELLANEOUS SUPPLIES:		1,896.00
-----------------------------------	--	----------

REPORT: J. R. Kerr, P. Eng., 2 1/2 days @ \$300.00/day	\$750.00	
Drafting	450.00	
Secretarial	100.00	
Printing and Report Binding	<u>68.40</u>	<u>1,368.40</u>

TOTAL HEREIN		<u><u>\$14,729.15</u></u>
------------------------	--	---------------------------

NOTE: The above information was provided to me by the staff of Pacer Exploration Services Ltd.


John R. Kerr

John R. Kerr, P. Eng.

ACME ANALYTICAL LABORATORIES LTD.

PHONE: 253-3158

Nov. 6, 1980
File # 80-1311

~~XXXXXXXXXXXXXXXXXXXXXXXXXXXX~~
~~XXXXXXXXXXXXXXXXXXXXXXXXXXXX~~
852 East Hastings St., Vancouver, B.C. V6A 1R6

[Heron Resources,
c/o Pacer Resources Services,
705 - 850 W. Hastings St.,
Vancouver, B.C.

[Attn.: Mr. Brian McClay]

TERMS:
NET TWO WEEKS INTEREST AT
1 1/2% PER MONTH CHARGED ON
OVERDUE ACCOUNTS.

NUMBER	ASSAY	PRICE	AMOUNT
799	Geochem Cu, Ag and Au assays with soil sample preparations @	\$5.25	\$4194.75
SHIPPING CHARGES:			

KEYSTONE BUSINESS FORMS LTD. - VANCOUVER

PLEASE PAY LAST AMOUNT 

APPENDIX B

GEOCHEMICAL DATA



To: Heron Resources,
c/o Pacer Resources Services,
705 - 850 W. Hastings St.,
Vancouver, B.C.

File No. 80-1311

Type of Samples Soil

Disposition _____

GEOCHEMICAL ASSAY CERTIFICATE

Attn.: Mr. Brian McClay

SAMPLE No.	Cu	Ag	Au							
L0 0000	60	.1	.005							1
0030	95	.1	.005							2
0060	40	.1	.010							3
0090	72	.1	.005							4
0120	275	.1	.010							5
0150	380	.1	.005							6
0180	55	.1	.010							7
0210	320	.1	.005							8
0240	275	.2	.010							9
0270	50	.1	.010							10
0300	15	.1	.005							11
0330	20	.1	.005							12
0360	8	.1	.005							13
0390	32	.1	.005							14
0420	35	.1	.005							15
0450	25	.1	.005							16
0480	48	.1	.005							17
0510	10	.1	.005							18
0540	32	.1	.005							19
0570	18	.1	.005							20
0600	12	.1	.005							21
0630	13	.1	.005							22
0660	15	.1	.005							23
0690	13	.1	.005							24
0720	6	.1	.005							25
0750	18	.1	.005							26
0780	4	.1	.005							27
0810	190	.1	.005							28
0840	28	.1	.005							29
0870	7	.2	.005							30
0900	9	.1	.005							31
0930	20	.1	.005							32
0960	25	.1	.005							33
0990	28	.2	.005							34
1020	680	.4	.005							35
1050	85	.3	.005							36
1080	54	.4	.005							37
L0 1110	2100	1.2	.005							38
										39
										40

All reports are the confidential property of clients
All results are in PPM.

DIGESTION:.....

DETERMINATION:.....

DATE SAMPLES RECEIVED Oct. 22, 1980

DATE REPORTS MAILED Nov. 6 1980

ASSAYER _____
Dean Toye

DEAN TOYE, B.Sc.
CHIEF CHEMIST
CERTIFIED B.C. ASSAYER



To: Heron Resources

ACME ANALYTICAL LABORATORIES LT

Assaying & Trace Analysis

852 E. Hastings St., Vancouver, B. C. V6A 1R6

phone: 253 - 3158

File No. 80-1311

Type of Samples Soil

Disposition

GEOCHEMICAL ASSAY CERTIFICATE

SAMPLE No.	Cu	Ag	Au										
L0 1140	250	.1	.010										1
1170	44	.1	.105										2
1200	22	.1	.005										3
1230	20	.1	.005										4
1260	34	.1	.010										5
1290	1600	.4	.015										6
1320	28	.1	.010										7
1350	10	.1	.005										8
1380	12	.1	.005										9
1410	2000	.6	.005										10
1440	1700	.3	.005										11
1470	20	.1	.005										12
L0 1500	11	.1	.005										13
													14
L1 0000	90	.1	.005										15
0030	140	.1	.005										16
0060	132	.1	.005										17
0090	140	.1	.005										18
0120	55	.1	.010										19
0150	470	.4	.005										20
0180	440	.3	.005										21
0270	45	.1	.005										22
0300	60	.1	.005										23
0330	22	.1	.005										24
0360	32	.1	.005										25
0390	25	.1	.005										26
0420	65	.1	.005										27
0450	62	.1	.005										28
0540	165	.2	.005										29
0570	115	.3	.005										30
0600	68	.1	.005										31
0630	25	.1	.005										32
0660	22	.1	.005										33
0690	26	.1	.005										34
0720	35	.1	.005										35
0750	26	.1	.005										36
0780	50	.1	.005										37
L1 0810	38	.1	.005										38
													39
													40

All reports are the confidential property of clients
All results are in PPM.

DIGESTION:.....

DETERMINATION:.....

DATE SAMPLES RECEIVED Oct. 22, 1980

DATE REPORTS MAILED _____

ASSAYER Dean Toy

DEAN TOYE, B.Sc.
CHIEF CHEMIST
CERTIFIED B.C. ASSAYER



To: Heron Resources

ACME ANALYTICAL LABORATORIES LT

Assaying & Trace Analysis

852 E. Hastings St., Vancouver, B. C. V6A 1R6

phone: 253 - 3158

80-1311

File No. _____

Type of Samples Soil

Disposition _____

GEOCHEMICAL ASSAY CERTIFICATE

SAMPLE No.	Cu	Ag	Au								
L1 0840	60	.1	.005								1
0870	22	.1	.005								2
0900	17	.1	.005								3
0930	85	.1	.005								4
0960	62	.1	.005								5
0990	18	.1	.005								6
1020	35	.1	.005								7
1050	32	.1	.005								8
1080	20	.1	.005								9
1110	12	.1	.005								10
1140	250	.1	.005								11
1170	72	.1	.005								12
1200	340	.1	.005								13
1230	46	.1	.005								14
1260	52	.1	.005								15
1290	20	.1	.005								16
1320	340	.2	.005								17
1350	850	.4	.005								18
1380	30	.1	.005								19
1410	950	.6	.005								20
1440	715	.2	.005								21
1470	280	.1	.005								22
L1 1500	25	.1	.005								23
											24
L2 0000	125	.1	.005								25
0030	20	.1	.005								26
0060	40	.1	.005								27
0090	62	.1	.005								28
0120	18	.1	.005								29
0150	32	.1	.005								30
0180	26	.1	.005								31
0210	120	.1	.005								32
0240	+10%	42.5	.120								33
0270	24000	12.2	.355								34
0300	200	.2	.005								35
0330	115	.1	.005								36
0360	110	.1	.005								37
L2 0390	55	.1	.005								38
											39
											40

All reports are the confidential property of clients
All results are in PPM.

DIGESTION:.....

DETERMINATION:.....

DATE SAMPLES RECEIVED Oct. 22, 1980

DATE REPORTS MAILED _____

ASSAYER Dean Toye

DEAN TOYE, B.Sc.
CHIEF CHEMIST
CERTIFIED B.C. ASSAYER



To: Heron Resources,

ACME ANALYTICAL LABORATORIES LT'

Assaying & Trace Analysis

852 E. Hastings St., Vancouver, B. C. V6A 1R6

phone: 253 - 3158

File No. 80-1311

Type of Samples Soil

Disposition

GEOCHEMICAL ASSAY CERTIFICATE

SAMPLE No.	Cu	Ag	Au							
L2 0420	600	.1	.005							1
0450	80	.1	.010							2
0570	295	.1	.005							3
0600	290	.1	.005							4
0630	72	.1	.005							5
0660	65	.1	.010							6
0690	100	.1	.005							7
0720	14	.1	.005							8
0750	33	.1	.005							9
0780	35	.1	.005							10
0810	30	.1	.005							11
0840	10	.1	.005							12
0870	4	.1	.005							13
0900	22	.1	.005							14
0930	18	.1	.005							15
0960	15	.1	.005							16
0990	54	.2	.005							17
1020	18	.3	.005							18
1050	30	.1	.005							19
1080	22	.1	.010							20
1110	28	.1	.005							21
1140	16	.1	.005							22
1170	20	.1	.005							23
1200	40	.1	.005							24
1230	660	.4	.015							25
1260	45	.1	.005							26
1290	18	.1	.005							27
1320	175	.4	.015							28
1350	32	.1	.005							29
1380	33	.1	.005							30
1410	27	.1	.005							31
1440	18	.1	.005							32
1470	23	.1	.005							33
L2 1500	32	.1	.005							34
										35
L3 0000	13	.1	.005							36
0030	15	.1	.010							37
0060	26	.1	.005							38
L3 0090	160	.1	.015							39
										40

All reports are the confidential property of clients
All results are in PPM.

DIGESTION:.....

DETERMINATION:.....

DATE SAMPLES RECEIVED Oct. 22, 1980

DATE REPORTS MAILED _____

ASSAYER Dean Toye

DEAN TOYE, B.Sc.
CHIEF CHEMIST
CERTIFIED B.C. ASSAYER



To: Heron Resources,

ACME ANALYTICAL LABORATORIES LTD.

Assaying & Trace Analysis

852 E. Hastings St., Vancouver, B. C. V6A 1R6

phone: 253 - 3158

File No. 80-1311

Type of Samples Soil

Disposition _____

GEOCHEMICAL ASSAY CERTIFICATE

SAMPLE No.	Cu	Ag	Au							
L3 0120	152	.1	.005							1
0150	80	.1	.005							2
0180	68	.1	.005							3
0210	11	.1	.005							4
0240	9	.1	.005							5
0270	15	.1	.005							6
0300	17	.1	.005							7
0330	38	.1	.005							8
0360	42	.1	.005							9
0390	39	.4	.005							10
0420	14	.1	.005							11
0450	13	.1	.005							12
0480	20	.1	.005							13
0510	62	.2	.005							14
0540	92	.2	.005							15
0570	78	.2	.005							16
L3 0600	116	.1	.005							17
										18
L3 0630	56	.1	.005							19
0660	128	.1	.005							20
0690	260	.1	.005							21
0720	570	.3	.005							22
0750	1100	.4	.005							23
0780	1050	.4	.005							24
0810	245	.1	.005							25
0840	20	.1	.005							26
0870	18	.1	.005							27
0900	18	.1	.005							28
0930	17	.1	.005							29
0960	18	.1	.005							30
0990	12	.1	.005							31
1020	2.7%	28.0	.030							32
1050	3.3%	42.0	.005							33
1080	220	.4	.005							34
1110	170	.1	.005							35
1140	275	.1	.005							36
1170	470	.1	.005							37
L3 1200	84	.1	.005							38
										39
										40

All reports are the confidential property of clients
 All results are in PPM.
 DIGESTION:.....
 DETERMINATION:.....

DATE SAMPLES RECEIVED Oct. 22, 1980
 DATE REPORTS MAILED _____
 ASSAYER Dean Toye

DEAN TOYE, B.Sc.
 CHIEF CHEMIST
 CERTIFIED B.C. ASSAYER



To: Heron Resources,

ACME ANALYTICAL LABORATORIES LTD.

Assaying & Trace Analysis

852 E. Hastings St., Vancouver, B. C. V6A 1R6

phone: 253 - 3158

File No. 80-1311

File No. -----

Type of Samples Soil

Disposition -----

GEOCHEMICAL ASSAY CERTIFICATE

SAMPLE No.	Cu	Ag	Au								
L3 1230	28	.1	.005								1
1260	27	.1	.005								2
1290	24	.1	.005								3
1320	142	.1	.005								4
1350	20	.1	.005								5
1380	18	.1	.005								6
1410	22	.1	.005								7
1440	28	.1	.005								8
1470	6	.1	.005								9
L3 1500	14	.1	.005								10
											11
L4 0000	20	.1	.005								12
0030	142	.1	.005								13
0060	176	.1	.005								14
0090	60	.1	.005								15
0120	146	.2	.005								16
0150	20	.1	.005								17
0180	12	.1	.005								18
0210	18	.1	.005								19
0240	31	.1	.005								20
0270	340	.1	.005								21
0300	21	.1	.005								22
0330	12	.2	.005								23
0360	12	.1	.005								24
0390	19	.1	.005								25
0420	92	.1	.005								26
0450	35	.1	.005								27
0480	132	.1	.005								28
0510	80	.1	.005								29
0540	122	.1	.005								30
0570	80	.1	.005								31
0600	36	.1	.005								32
0630	86	.1	.005								33
0660	60	.2	.005								34
0690	158	.1	.005								35
0720	390	.1	.005								36
0750	1050	.3	.005								37
L4 0780	146	.1	.005								38
											39
											40

All reports are the confidential property of clients
All results are in PPM.

DIGESTION:.....

DETERMINATION:.....

DATE SAMPLES RECEIVED Oct. 22, 1980

DATE REPORTS MAILED -----

ASSAYER Dean Toye

DEAN TOYE, B.Sc.
CHIEF CHEMIST
CERTIFIED B.C. ASSAYER



To: Heron Resources,

ACME ANALYTICAL LABORATORIES LTD.

Assaying & Trace Analysis

852 E. Hastings St., Vancouver, B. C. V6A 1R6

phone:253 - 3158

File No. 80-1311

Soil

Type of Samples _____

Disposition _____

GEOCHEMICAL ASSAY CERTIFICATE

SAMPLE No.	Cu	Ag	Au							
L4 0810	655	.1	.005							1
0840	530	.2	.010							2
0870	380	.3	.010							3
0900	250	.1	.005							4
0930	23	.1	.005							5
0960	20	.1	.005							6
0990	16	.1	.005							7
1020	460	.2	.005							8
1050	220	.1	.005							9
1080	102	.2	.005							10
1100	380	.1	.005							11
1140	114	.1	.005							12
1170	102	.1	.005							13
1200	20	.2	.005							14
1230	25	.1	.005							15
1260	29	.3	.010							16
1290	16	.1	.005							17
1320	50	.1	.005							18
1350	78	.2	.005							19
1380	18	.1	.005							20
1410	34	.1	.005							21
1440	28	.1	.005							22
1470	2650	.6	.010							23
L4 1500	1150	.4	.005							24
										25
L5 0000	335	.3	.005							26
0030	20	.1	.005							27
0060	19	.2	.370							28
0090	110	.2	.010							29
0120	38	.1	.010							30
0150	40	.1	.005							31
0180	18	.1	.005							32
0210	30	.1	.005							33
0240	22	.1	.005							34
0270	12	.3	.005							35
0300	7	.1	.040							36
0330	11	.1	.005							37
L5 0360	17	.1	.005							38
										39
										40

All reports are the confidential property of clients
All results are in PPM.

DIGESTION:.....

DETERMINATION:.....

DATE SAMPLES RECEIVED Oct. 22, 1980

DATE REPORTS MAILED _____

ASSAYER Dean Toye

DEAN TOYE, B.Sc.
CHIEF CHEMIST
CERTIFIED B.C. ASSAYER



To: Heron Resources,

ACME ANALYTICAL LABORATORIES LTD.

Assaying & Trace Analysis

852 E. Hastings St., Vancouver, B. C. V6A 1R6

phone: 253 - 3158

File No. 80-1311

Type of Samples Soil

GEOCHEMICAL ASSAY CERTIFICATE

Disposition _____

SAMPLE No.	Cu	Ag	Au												
L5 0390	168	.1	.005												1
0420	14	.1	.005												2
0450	39	.1	.005												3
0480	92	.1	.005												4
0510	39	.1	.005												5
0540	164	.1	.005												6
0570	230	.1	.005												7
0600	25	.1	.005												8
0630	22	.1	.005												9
0660	132	.1	.005												10
0690	230	.1	.005												11
0720	35	.1	.005												12
0750	17	.1	.005												13
0780	23	.1	.005												14
0810	11	.1	.005												15
0840	24	.1	.005												16
0870	200	.1	.005												17
L5 0900	580	.1	.005												18
															19
L5 0930	2900	1.2	.005												20
0960	192	.1	.005												21
0990	280	.1	.005												22
1020	665	.3	.005												23
1050	110	.2	.005												24
1080	60	.1	.005												25
1140	72	.1	.005												26
1170	46	.1	.005												27
1230	265	.1	.005												28
1260	220	.1	.005												29
1290	106	.1	.005												30
1320	28	.1	.005												31
1350	22	.1	.005												32
1380	11	.1	.005												33
1410	9	.2	.005												34
1440	64	.2	.005												35
1470	22	.1	.005												36
L5 1500	36	.1	.005												37
															38
															39
															40

All reports are the confidential property of clients
All results are in PPM.

DIGESTION:.....

DETERMINATION:.....

DATE SAMPLES RECEIVED Oct. 22, 1980

DATE REPORTS MAILED _____

ASSAYER _____

DEAN TOYE, B.Sc.
CHIEF CHEMIST
CERTIFIED B.C. ASSAYER



To: Heron Resources,

ACME ANALYTICAL LABORATORIES LTD.

Assaying & Trace Analysis

852 E. Hastings St., Vancouver, B. C. V6A 1R6

phone:253 - 3158

File No. 80-1311

Type of Samples Soil

Disposition _____

GEOCHEMICAL ASSAY CERTIFICATE

SAMPLE No.	Cu	Ag	Au								
L6 0000	13	.1	.005								1
0030	24	.1	.005								2
0060	17	.1	.005								3
0090	45	.1	.005								4
0120	24	.1	.005								5
0150	18	.2	.005								6
0180	11	.2	.005								7
0210	24	.2	.005								8
0240	24	.1	.005								9
0270	28	.1	.005								10
0300	13	.1	.005								11
0330	16	.1	.005								12
0360	29	.1	.005								13
0390	50	.1	.005								14
0420	38	.1	.005								15
0450	45	.1	.005								16
0480	126	.1	.005								17
0510	56	.1	.005								18
0540	52	.1	.005								19
0570	35	.1	.005								20
L6 0600	25	.1	.005								21
											22
											23
L6 0630	8	.1	.005								24
0660	14	.1	.005								25
0690	12	.1	.005								26
0720	16	.1	.005								27
0750	16	.1	.005								28
0780	200	.1	.005								29
0810	340	.2	.005								30
0840	150	.1	.005								31
0870	162	.1	.005								32
0900	22	.1	.005								33
0930	114	.1	.005								34
0960	30	.1	.005								35
0990	76	.1	.005								36
1020	255	.2	.005								37
1050	64	.1	.005								38
L6 1080	210	.1	.005								39
											40

All reports are the confidential property of clients
All results are in PPM.

DIGESTION:.....

DETERMINATION:.....

DATE SAMPLES RECEIVED Oct. 22, 1980

DATE REPORTS MAILED _____

ASSAYER Dean Toy

DEAN TOYE, B.Sc.
CHIEF CHEMIST
CERTIFIED B.C. ASSAYER



To: Heron Resources,

File No. 80-1311

Type of Samples Soil

Disposition _____

GEOCHEMICAL ASSAY CERTIFICATE

SAMPLE No.	Cu	Ag	Au								
L6 1110	44	.1	.005								1
1140	32	.1	.005								2
1170	35	.1	.005								3
1200	134	.1	.005								4
1230	66	.1	.005								5
1260	54	.1	.005								6
1290	56	.1	.005								7
1320	166	.1	.005								8
1350	310	.1	.005								9
1380	38	.1	.005								10
1410	66	.1	.005								11
1440	36	.1	.005								12
1470	14	.1	.005								13
L6 1500	8	.1	.005								14
											15
L7 0000	27	.1	.005								16
0030	26	.1	.005								17
0060	25	.1	.010								18
0090	11	.2	.005								19
0120	68	.2	.005								20
0150	182	.2	.005								21
0180	18	.3	.005								22
0210	17	.1	.005								23
0240	16	.1	.005								24
0270	60	.1	.005								25
0300	19	.1	.005								26
0330	8	.1	.005								27
0360	10	.1	.005								28
0390	56	.1	.005								29
0420	82	.2	.005								30
0450	62	.1	.005								31
0480	102	.1	.005								32
0510	144	.1	.005								33
0540	38	.1	.005								34
0570	44	.1	.005								35
0600	15	.1	.005								36
0630	19	.1	.005								37
L7 0660	6	.1	.005								38
											39
											40

All reports are the confidential property of clients
All results are in PPM.

DIGESTION:.....

DETERMINATION:.....

DATE SAMPLES RECEIVED Oct. 22, 1980

DATE REPORTS MAILED _____

ASSAYER Dean Toye

DEAN TOYE, B.Sc.
CHIEF CHEMIST
CERTIFIED B.C. ASSAYER



To: Heron Resources ,

ACME ANALYTICAL LABORATORIES LTD.

Assaying & Trace Analysis

852 E. Hastings St., Vancouver, B. C. V6A 1R6

phone:253 - 3158

File No. 80-1311

Type of Samples Soil

Disposition

GEOCHEMICAL ASSAY CERTIFICATE

II

SAMPLE No.	Cu	Ag	Au								
L7 0690	22	.1	.005								1
0720	33	.1	.005								2
0750	10	.1	.005								3
0780	160	.1	.005								4
0810	16	.1	.005								5
0840	13	.1	.005								6
0870	9	.1	.005								7
0900	15	.1	.005								8
0930	12	.1	.005								9
0960	16	.1	.005								10
0990	20	.1	.005								11
1020	260	.1	.010								12
1050	56	.1	.005								13
1080	36	.1	.005								14
1110	43	.1	.005								15
1140	31	.1	.005								16
1170	16	.1	.005								17
1200	126	.2	.015								18
1230	144	.1	.010								19
1260	54	.1	.005								20
1290	72	.1	.005								21
1320	68	.1	.005								22
1350	46	.1	.005								23
1380	86	.1	.005								24
1410	114	.1	.005								25
1440	73	.1	.005								26
L7 1470	15	.1	.005								27
											28
L8 0000	106	.1	.005								29
0030	9	.1	.005								30
0060	66	.1	.005								31
0090	30	.1	.005								32
0120	840	.2	.005								33
0150	17	.1	.005								34
0180	52	.1	.005								35
0210	19	.1	.005								36
0240	82	.1	.005								37
L8 0270	31	.1	.005								38
											39
											40

All reports are the confidential property of clients
All results are in PPM.

DIGESTION:.....

DETERMINATION:.....

DATE SAMPLES RECEIVED Oct. 22, 1980

DATE REPORTS MAILED _____

ASSAYER _____

DEAN TOYE, B.Sc.
CHIEF CHEMIST
CERTIFIED B.C. ASSAYER



To: Heron Resources,

File No. 80-1311

Type of Samples Soil

Disposition

GEOCHEMICAL ASSAY CERTIFICATE

SAMPLE No.	Cu	Ag	Au								
L8 0300	44	.1	.005								1
0330	78	.1	.005								2
0360	260	.1	.010								3
0390	41	.1	.005								4
0420	14	.1	.005								5
0450	11	.1	.005								6
0480	10	.1	.005								7
0510	24	.1	.005								8
0540	18	.1	.005								9
0570	16	.1	.005								10
L8 0600	12	.1	.005								11
											12
L8 0630	24	.1	.005								13
0660	14	.1	.005								14
0690	14	.1	.005								15
0720	4	.1	.005								16
0750	13	.1	.005								17
0780	7	.1	.005								18
0810	13	.1	.005								19
0840	8	.1	.005								20
0870	10	.1	.005								21
0900	6	.1	.005								22
0930	56	.1	.005								23
0960	179	.1	.005								24
0990	34	.1	.005								25
1020	80	.1	.010								26
1050	41	.1	.005								27
1080	21	.1	.005								28
1110	10	.1	.005								29
1140	30	.1	.005								30
1170	445	.2	.005								31
1200	58	.1	.005								32
1230	37	.1	.005								33
1260	52	.1	.005								34
1290	90	.1	.005								35
1320	78	.1	.010								36
1350	68	.1	.005								37
L8 1380	39	.1	.005								38
											39
											40

All reports are the confidential property of clients
All results are in PPM.

DIGESTION:.....

DETERMINATION:.....

DATE SAMPLES RECEIVED Oct. 22, 1980

DATE REPORTS MAILED

ASSAYER *Dean Toy*

DEAN TOYE, B.Sc.
CHIEF CHEMIST
CERTIFIED B.C. ASSAYER



To: Heron Resources,

ACME ANALYTICAL LABORATORIES LTD.

Assaying & Trace Analysis

852 E. Hastings St., Vancouver, B. C. V6A 1R6

phone: 253 - 3158

File No. 80-1311

Type of Samples Soil

Disposition

GEOCHEMICAL ASSAY CERTIFICATE

13

SAMPLE No.	Cu	Ag	Au									
L8 1410	54	.1	.005									1
1440	11	.1	.005									2
1470	10	.1	.005									3
L8 1500	12	.1	.005									4
												5
L9 0000	225	.1	.005									6
0030	90	.1	.005									7
0060	42	.1	.005									8
0090	116	.1	.005									9
0120	220	.1	.015									10
0150	156	.1	.005									11
0180	27	.1	.005									12
0210	360	.1	.005									13
0240	134	.1	.005									14
0270	42	.1	.005									15
0300	22	.1	.005									16
0330	68	.1	.005									17
0360	260	.1	.005									18
0390	22	.1	.005									19
0420	18	.1	.005									20
0450	16	.1	.005									21
0480	9	.1	.005									22
0510	42	.1	.005									23
0540	49	.1	.005									24
0570	142	.1	.010									25
0600	21	.1	.005									26
0630	42	.1	.005									27
0660	27	.1	.005									28
0690	21	.1	.005									29
0720	60	.1	.005									30
0750	14	.1	.005									31
0780	14	.1	.005									32
0810	10	.1	.005									33
0840	18	.1	.005									34
0870	15	.1	.105									35
0900	10	.1	.005									36
0930	26	.1	.005									37
L9 0960	26	.1	.005									38
												39
												40

All reports are the confidential property of clients
All results are in PPM.

DIGESTION:.....

DETERMINATION:.....

DATE SAMPLES RECEIVED Oct. 22, 1980

DATE REPORTS MAILED

ASSAYER Dean Toye

DEAN TOYE, B.Sc.
CHIEF CHEMIST
CERTIFIED B.C. ASSAYER



To: Heron Resources,

ACME ANALYTICAL LABORATORIES LTD.

Assaying & Trace Analysis

852 E. Hastings St., Vancouver, B. C. V6A 1R6

phone:253 - 3158

File No. 80-1311

Type of Samples Soil

Disposition _____

GEOCHEMICAL ASSAY CERTIFICATE

14

SAMPLE No.		Cu	Ag	Au						
L 9	0990	58	.1	.005						1
	1020	26	.1	.015						2
	1050	14	.1	.010						3
	1080	26	.1	.005						4
	1110	46	.1	.010						5
	1140	21	.1	.005						6
	1170	92	.1	.005						7
	1200	42	.1	.005						8
	1230	16	.1	.005						9
	1260	26	.1	.005						10
	1290	40	.1	.005						11
	1320	N.S.								12
	1350	178	.1	.005						13
	1380	132	.1	.005						14
	1410	102	.1	.005						15
	1440	26	.1	.005						16
	1470	20	.1	.005						17
L 9	1500	27	.1	.005						18
										19
L10	0000	16	.1	.010						20
	0030	35	.1	.005						21
	0060	100	.1	.005						22
	0090	23	.1	.005						23
	0120	10	.1	.005						24
	0150	440	.2	.015						25
	0180	360	.2	.010						26
	0210	62	.1	.005						27
	0240	31	.2	.005						28
	0270	16	.1	.005						29
	0300	16	.1	.005						30
	0330	49	.1	.005						31
	0360	33	.1	.005						32
	0390	13	.1	.005						33
	0420	11	.1	.005						34
	0450	575	.3	.010						35
	0480	31	.1	.005						36
	0510	140	.1	.005						37
L10	0540	62	.1	.005						38
										39
										40

All reports are the confidential property of clients
All results are in PPM.

DIGESTION:.....

DETERMINATION:.....

DATE SAMPLES RECEIVED Oct. 22, 1980

DATE REPORTS MAILED _____

ASSAYER _____

DEAN TOYE, B.Sc.
CHIEF CHEMIST
CERTIFIED B.C. ASSAYER



To: Heron Resources,

ACME ANALYTICAL LABORATORIES LTD.

Assaying & Trace Analysis

852 E. Hastings St., Vancouver, B. C. V6A 1R6

phone:253 - 3158

File No. 80-1311

Type of Samples Soil

Disposition

GEOCHEMICAL ASSAY CERTIFICATE

15

SAMPLE No.	Cu	Ag	Au								
L10 0570	72	.1	.005								1
0600	30	.1	.005								2
0630	94	.1	.005								3
0660	13	.1	.005								4
0690	8	.1	.005								5
0720	3	.1	.005								6
0750	8	.1	.005								7
0780	7	.1	.005								8
0810	8	.1	.005								9
0840	10	.1	.005								10
0870	11	.1	.005								11
0900	14	.1	.005								12
0930	18	.1	.005								13
0960	6	.1	.005								14
L10 0990	20	.1	.005								15
											16
L10 1020	28	.1	.005								17
1050	200	.1	.005								18
1080	9	.1	.005								19
1110	45	.1	.005								20
1140	22	.1	.005								21
1170	9	.1	.005								22
1200	26	.1	.005								23
1230	28	.1	.005								24
1260	18	.1	.005								25
1290	18	.2	.005								26
1320	24	.2	.005								27
1350	30	.1	.005								28
1380	82	.1	.005								29
1410	86	.2	.005								30
1440	90	.1	.005								31
1470	52	.1	.010								32
L10 1500	25	.1	.005								33
											34
L11 0000	29	.2	.005								35
0030	40	.1	.010								36
0060	22	.1	.005								37
L11 0090	160	.2	.005								38
											39
											40

All reports are the confidential property of clients
All results are in PPM.

DIGESTION:.....

DETERMINATION:.....

DATE SAMPLES RECEIVED Oct. 22, 1980

DATE REPORTS MAILED

ASSAYER

DEAN TOYE, B.Sc.
CHIEF CHEMIST
CERTIFIED B.C. ASSAYER



To: Heron Resources,

ACME ANALYTICAL LABORATORIES LTD.

Assaying & Trace Analysis

852 E. Hastings St., Vancouver, B. C. V6A 1R6

phone:253 - 3158

File No. 80-1311

Type of Samples Soil

Disposition

GEOCHEMICAL ASSAY CERTIFICATE

16

SAMPLE No.	Cu	Ag	Au							
L11 0120	18	.1	.005							1
0150	38	.1	.010							2
0180	14	.1	.005							3
0210	9	.1	.005							4
0240	17	.1	.005							5
0270	36	.1	.005							6
0300	64	.1	.005							7
0330	11	.1	.005							8
0360	76	.1	.005							9
0390	31	.2	.005							10
0420	40	.1	.005							11
0450	30	.1	.005							12
0480	18	.1	.005							13
0510	35	.1	.005							14
0540	24	.1	.005							15
0570	12	.1	.005							16
L11 0600	10	.1	.005							17
										18
L11 0630	9	.2	.005							19
0660	20	.1	.005							20
0690	4	.1	.005							21
0720	8	.1	.005							22
0750	38	.1	.010							23
0780	11	.1	.010							24
0810	18	.1	.005							25
0840	19	.1	.005							26
0870	29	.1	.005							27
0900	23	.1	.005							28
0930	37	.1	.005							29
0960	17	.1	.005							30
0990	8	.1	.005							31
1020	32	.1	.005							32
1050	38	.1	.010							33
1080	19	.1	.005							34
1110	22	.1	.005							35
1140	8	.1	.005							36
1170	21	.1	.005							37
1200	56	.1	.005							38
L11 1230	34	.1	.005							39
										40

All reports are the confidential property of clients
All results are in PPM.

DIGESTION:.....

DETERMINATION:.....

DATE SAMPLES RECEIVED Oct. 22, 1980

DATE REPORTS MAILED _____

ASSAYER Dean Toye

DEAN TOYE, B.Sc.
CHIEF CHEMIST
CERTIFIED B.C. ASSAYER



To: Heron Resources,

ACME ANALYTICAL LABORATORIES LTD.

Assaying & Trace Analysis

852 E. Hastings St., Vancouver, B. C. V6A 1R6

phone:253 - 3158

File No. 80-1311

Type of Samples Soil

Disposition _____

GEOCHEMICAL ASSAY CERTIFICATE

SAMPLE No.	Cu	Ag	Au									
L11 1260	102	.1	.005									1
1290	54	.1	.005									2
1320	24	.1	.005									3
1350	370	.1	.005									4
1380	14	.1	.005									5
1410	33	.1	.005									6
1440	78	.1	.005									7
L11 1500	160	.1	.005									8
												9
L12 0000	74	.1	.005									10
0030	94	.1	.005									11
0060	142	.3	.005									12
0090	96	.4	.005									13
0120	34	.1	.005									14
0150	41	.2	.005									15
0180	63	.2	.005									16
0210	18	.2	.005									17
0240	27	.1	.005									18
0270	42	.2	.005									19
0300	33	.1	.005									20
0330	24	.2	.005									21
0360	14	.2	.005									22
0390	11	.1	.005									23
0420	42	.2	.005									24
0450	52	.4	.005									25
0480	32	.2	.005									26
0510	45	.4	.005									27
0540	22	.1	.005									28
0570	31	.1	.005									29
0600	44	.1	.005									30
0630	14	.1	.005									31
0660	17	.1	.005									32
0690	22	.2	.005									33
0720	20	.1	.005									34
0750	18	.2	.005									35
0780	13	.2	.005									36
0810	9	.1	.005									37
L12 0840	52	.1	.005									38
												39
												40

All reports are the confidential property of clients
All results are in PPM.

DIGESTION:.....

DETERMINATION:.....

DATE SAMPLES RECEIVED Oct. 22, 1980

DATE REPORTS MAILED _____

ASSAYER Dean Toye

DEAN TOYE, B.Sc.
CHIEF CHEMIST
CERTIFIED B.C. ASSAYER



To: Heron Resources,

ACME ANALYTICAL LABORATORIES LTD.

Assaying & Trace Analysis

852 E. Hastings St., Vancouver, B. C. V6A 1R6

phone:253 - 3158

File No. 80-1311

Type of Samples Soil

Disposition _____

GEOCHEMICAL ASSAY CERTIFICATE

1

SAMPLE No.	Cu	Ag	Au								
L12 0870	27	.2	.005								1
0900	22	.1	.005								2
0930	16	.3	.010								3
0960	34	.1	.005								4
0990	48	.4	.010								5
1020	20	.5	.010								6
1050	18	.1	.005								7
1080	28	.1	.005								8
1110	38	.1	.005								9
1140	78	.1	.005								10
1170	230	.1	.005								11
1200	62	.1	.005								12
1230	40	.1	.005								13
1260	28	.1	.005								14
1320	106	.2	.005								15
1350	430	.2	.005								16
1410	37	.1	.010								17
1440	78	.1	.005								18
L12 1500	56	.1	.005								19
											20
L13 0000	20	.1	.005								21
0030	23	.1	.005								22
0060	32	.1	.005								23
0090	30	.1	.005								24
0120	90	.2	.005								25
0150	20	.2	.005								26
0180	90	.1	.005								27
0210	545	.6	.015								28
0240	182	.2	.005								29
0270	20	.1	.005								30
0300	20	.1	.005								31
0330	31	.1	.005								32
0360	19	.1	.005								33
0390	11	.1	.005								34
0420	15	.3	.005								35
0450	8	.2	.005								36
0480	25	.1	.005								37
L13 0510	88	.2	.005								38
											39
											40

All reports are the confidential property of clients
All results are in PPM.

DIGESTION:.....

DETERMINATION:.....

DATE SAMPLES RECEIVED Oct. 22, 1980

DATE REPORTS MAILED _____

ASSAYER _____

DEAN TOYE, B.Sc.
CHIEF CHEMIST
CERTIFIED B.C. ASSAYER



To: Heron Resources,

ACME ANALYTICAL LABORATORIES LTD.

Assaying & Trace Analysis

852 E. Hastings St., Vancouver, B. C. V6A 1R6

phone:253 - 3158

80-1311

File No. _____

Soil

Type of Samples _____

Disposition _____

GEOCHEMICAL ASSAY CERTIFICATE

19

SAMPLE No.	Cu	Ag	Au									
L13 0540	32	.2	.005									1
0570	19	.2	.015									2
0600	14	.3	.005									3
0630	12	.1	.010									4
0660	24	.1	.005									5
0690	28	.2	.010									6
0720	10	.1	.005									7
0750	16	.1	.005									8
0780	12	.1	.005									9
0810	8	.1	.005									10
0840	34	.1	.005									11
0870	9	.1	.005									12
0900	9	.2	.005									13
0930	24	.4	.005									14
0960	16	.3	.005									15
0990	14	.1	.005									16
1020	108	.1	.005									17
1050	27	.1	.005									18
1080	8	.1	.005									19
1110	54	.1	.010									20
1140	13	.2	.005									21
1170	7	.1	.005									22
1200	9	.6	.010									23
1230	5	.1	.005									24
L13 1260	52	.1	.005									25
												26
L13 1290	330	.1	.020									27
1320	62	.1	.005									28
1350	124	.1	.005									29
1380	6	.1	.005									30
1410	37	.1	.005									31
1470	190	.1	.005									32
L13 1500	40	.1	.005									33
												34
L14 0000	42	.4	.005									35
0030	23	.3	.005									36
0060	45	.1	.005									37
0090	72	.1	.005									38
L14 0120	43	.1	.005									39
												40

All reports are the confidential property of clients
All results are in PPM.

DIGESTION:.....

DETERMINATION:.....

DATE SAMPLES RECEIVED Oct. 22, 1980

DATE REPORTS MAILED _____

ASSAYER Dean Toyne

DEAN TOYE, B.Sc.
CHIEF CHEMIST
CERTIFIED B.C. ASSAYER



To: Heron Resources,

ACME ANALYTICAL LABORATORIES LTD.

Assaying & Trace Analysis

852 E. Hastings St., Vancouver, B. C. V6A 1R6

phone: 253 - 3158

File No. 80-1311

Type of Samples Soil

Disposition

GEOCHEMICAL ASSAY CERTIFICATE

20

SAMPLE No.	Cu	Ag	Au								
L14 0150	106	.2	.005								1
0180	30	.1	.005								2
0210	40	.2	.005								3
0240	350	.3	.005								4
0270	52	.1	.005								5
0300	31	.2	.005								6
0330	21	.1	.005								7
0360	17	.1	.005								8
0390	60	.1	.005								9
0420	33	.3	.005								10
0450	27	.3	.005								11
0480	34	.1	.005								12
0510	64	.2	.005								13
0540	30	.1	.005								14
0570	30	.2	.005								15
L14 0600	22	.1	.005								16
											17
L14 0630	28	.1	.005								18
0660	29	.1	.005								19
0690	36	.3	.005								20
0720	37	.2	.005								21
0780	26	.2	.005								22
0810	23	.1	.005								23
0840	20	.1	.005								24
0870	16	.1	.005								25
0900	26	.1	.005								26
0930	24	.1	.005								27
0960	17	.1	.005								28
0990	16	.1	.005								29
1020	33	.1	.005								30
1050	45	.1	.005								31
1080	27	.1	.005								32
1110	19	.1	.005								33
1140	24	.1	.005								34
1170	30	.1	.005								35
1200	14	.1	.005								36
1230	28	.1	.005								37
L14 1260	34	.1	.010								38
											39
											40

All reports are the confidential property of clients
All results are in PPM.

DIGESTION:.....

DETERMINATION:.....

DATE SAMPLES RECEIVED Oct. 22, 1980

DATE REPORTS MAILED _____

ASSAYER Dean Toye

DEAN TOYE, B.Sc.
CHIEF CHEMIST
CERTIFIED B.C. ASSAYER



To: Heron Resources,

ACME ANALYTICAL LABORATORIES LTD.

Assaying & Trace Analysis

852 E. Hastings St., Vancouver, B. C. V6A 1R6

phone:253 - 3158

File No. 80-1311

Type of Samples Soil

GEOCHEMICAL ASSAY CERTIFICATE

Disposition

2.

SAMPLE No.	Cu	Ag	Au								
L14 1290	32	.1	.005								1
1320	11	.1	.005								2
1350	29	.1	.005								3
1380	23	.1	.005								4
1410	26	.1	.010								5
1440	43	.1	.005								6
1470	17	.1	.005								7
L14 1500	23	.1	.005								8
											9
L15 0000	54	.1	.005								10
0030	68	.1	.005								11
0060	45	.1	.005								12
0090	34	.1	.005								13
0120	31	.1	.005								14
0150	11	.1	.005								15
0180	24	.1	.005								16
0210	16	.1	.005								17
0240	24	.1	.005								18
0270	14	.1	.005								19
0300	39	.1	.005								20
0330	230	.1	.005								21
0360	31	.1	.005								22
0390	37	.1	.005								23
0420	30	.1	.005								24
0450	64	.1	.005								25
0480	82	.1	.005								26
0510	22000	5.5	.025								27
0540	74	.1	.005								28
0570	21	.1	.010								29
0600	32	.1	.005								30
0630	37	.1	.005								31
0660	98	.1	.005								32
0690	37	.1	.010								33
0720	24	.1	.005								34
0750	18	.1	.005								35
0780	35	.1	.005								36
0810	31	.1	.005								37
L15 0840	28	.1	.005								38
											39
											40

All reports are the confidential property of clients
All results are in PPM.

DIGESTION:.....

DETERMINATION:.....

DATE SAMPLES RECEIVED Oct. 22, 1980

DATE REPORTS MAILED _____

ASSAYER Dean Toye

DEAN TOYE, B.Sc.
CHIEF CHEMIST
CERTIFIED B.C. ASSAYER



To: Heron Resources,

ACME ANALYTICAL LABORATORIES LTD.

Assaying & Trace Analysis

852 E. Hastings St., Vancouver, B. C. V6A 1R6

phone: 253 - 3158

File No. 80 - 1311

Type of Samples Soil

Disposition

GEOCHEMICAL ASSAY CERTIFICATE

SAMPLE No.	Cu	Ag	Au										
L15 0870	19	.1	.005										1
0900	22	.1	.005										2
0930	30	.1	.005										3
0960	12	.1	.005										4
0990	30	.1	.005										5
1020	17	.2	.005										6
1050	34	.1	.005										7
1080	18	.1	.005										8
1110	22	.1	.005										9
1140	17	.2	.005										10
1170	6	.1	.005										11
1200	15	.1	.010										12
1230	15	.1	.005										13
1260	28	.1	.005										14
1290	3	.2	.005										15
1320	17	.1	.005										16
1350	8	.1	.005										17
1380	7	.1	.005										18
1410	8	.1	.005										19
1440	12	.1	.005										20
1470	130	.1	.005										21
L15 1500	18	.1	.005										22
													23
													24
													25
													26
													27
													28
													29
													30
													31
													32
													33
													34
													35
													36
													37
													38
													39
													40

All reports are the confidential property of clients
All results are in PPM.

DIGESTION:.....

DETERMINATION:.....

DATE SAMPLES RECEIVED Oct. 22, 1980

DATE REPORTS MAILED

ASSAYER Dean Toye

DEAN TOYE, B.Sc.
CHIEF CHEMIST
CERTIFIED B.C. ASSAYER

APPENDIX C

WRITER'S CERTIFICATE

JOHN R. KERR, P. ENG.

Geological Engineer

#1-219 VICTORIA STREET • KAMLOOPS, B.C. V2C 2A1 • TELEPHONE (604) 374-0544

CERTIFICATE

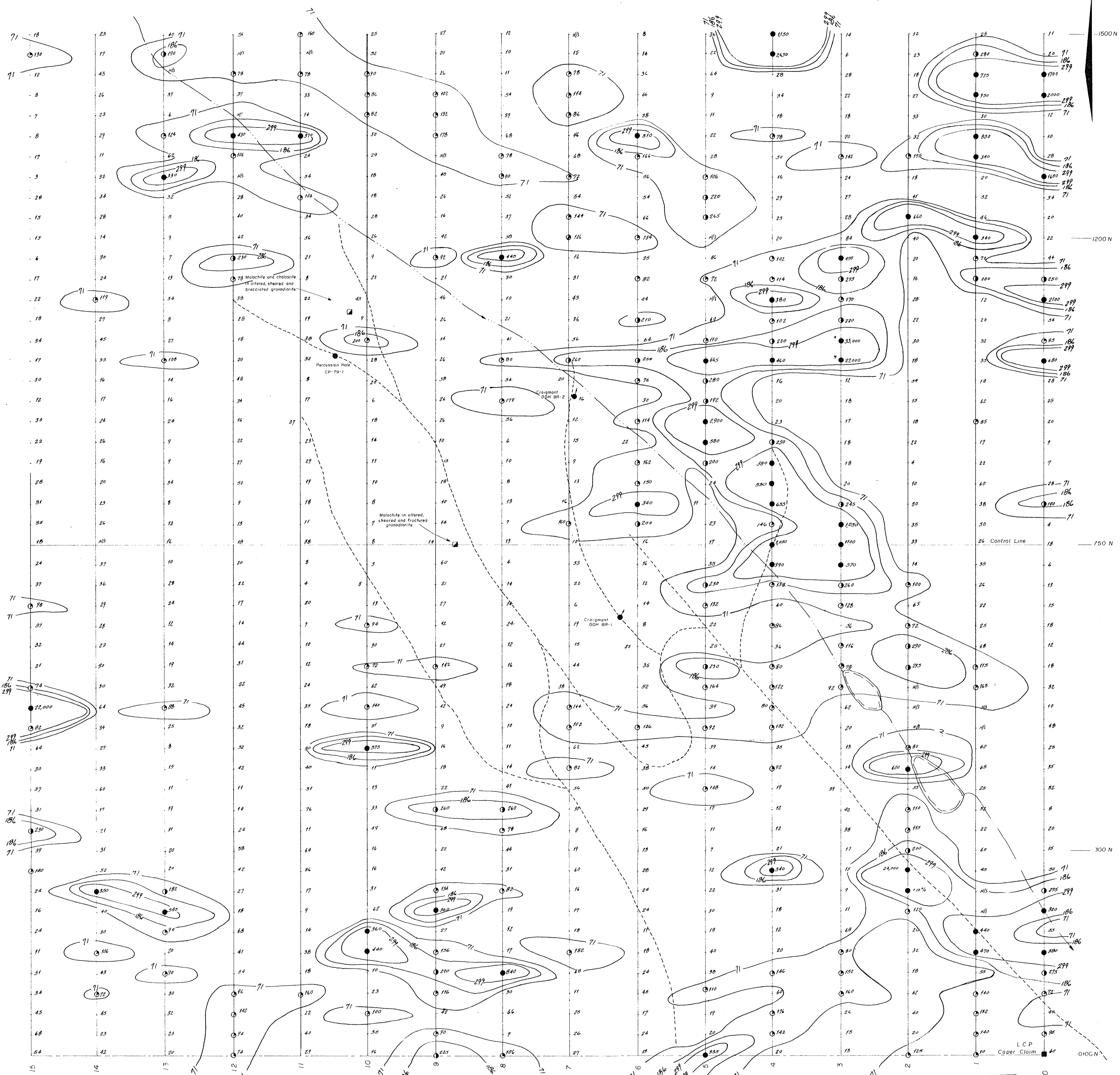
I, JOHN R. KERR, OF KAMLOOPS, BRITISH COLUMBIA, DO HEREBY CERTIFY THAT:

- (1). I am a member of the Association of Professional Engineers of British Columbia and a Fellow of the Geological Association of Canada.
- (2). I am a geologist employed by Kerr, Dawson and Associates Ltd. of #1-219 Victoria Street, Kamloops, British Columbia.
- (3). I am a graduate of the University of British Columbia (1964), with a B.A. Sc. degree in Geological Engineering.
- (4). I have practised my profession continuously since graduation.
- (5). I am the author of this report which is based on data collected by the staff of Pacer Exploration Services Ltd.

February 5, 1981,
KAMLOOPS, B. C.



John R. Kerr, P. Eng.
GEOLOGIST



- L E G E N D -

- CREEK
- ACCESS ROAD
- POND
- CLAIM BOUNDARY AND LEGAL CORNER POST (L.C.P.)
- GRID LINE WITH SOIL SAMPLE LOCATION. GEOCHEMICAL VALUES FOR COPPER AND SILVER EXPRESSED IN PARTS PER MILLION (PPM)
- COMPLETED DRILL HOLES
- SHAFT

GEOCHEMICAL CATEGORIES

	COPPER (PPM)	SILVER (PPM)
BACKGROUND	< 71	< 0.2
POSSIBLY ANOMALOUS	71 - 185	0.2 - 0.9
PROBABLY ANOMALOUS	186 - 299	1.0 - 1.7
DEFINITELY ANOMALOUS	> 299	> 1.7

MINERAL RESOURCES BRANCH
ASSESSMENT REPORT

8595
HERON RESOURCES LTD.

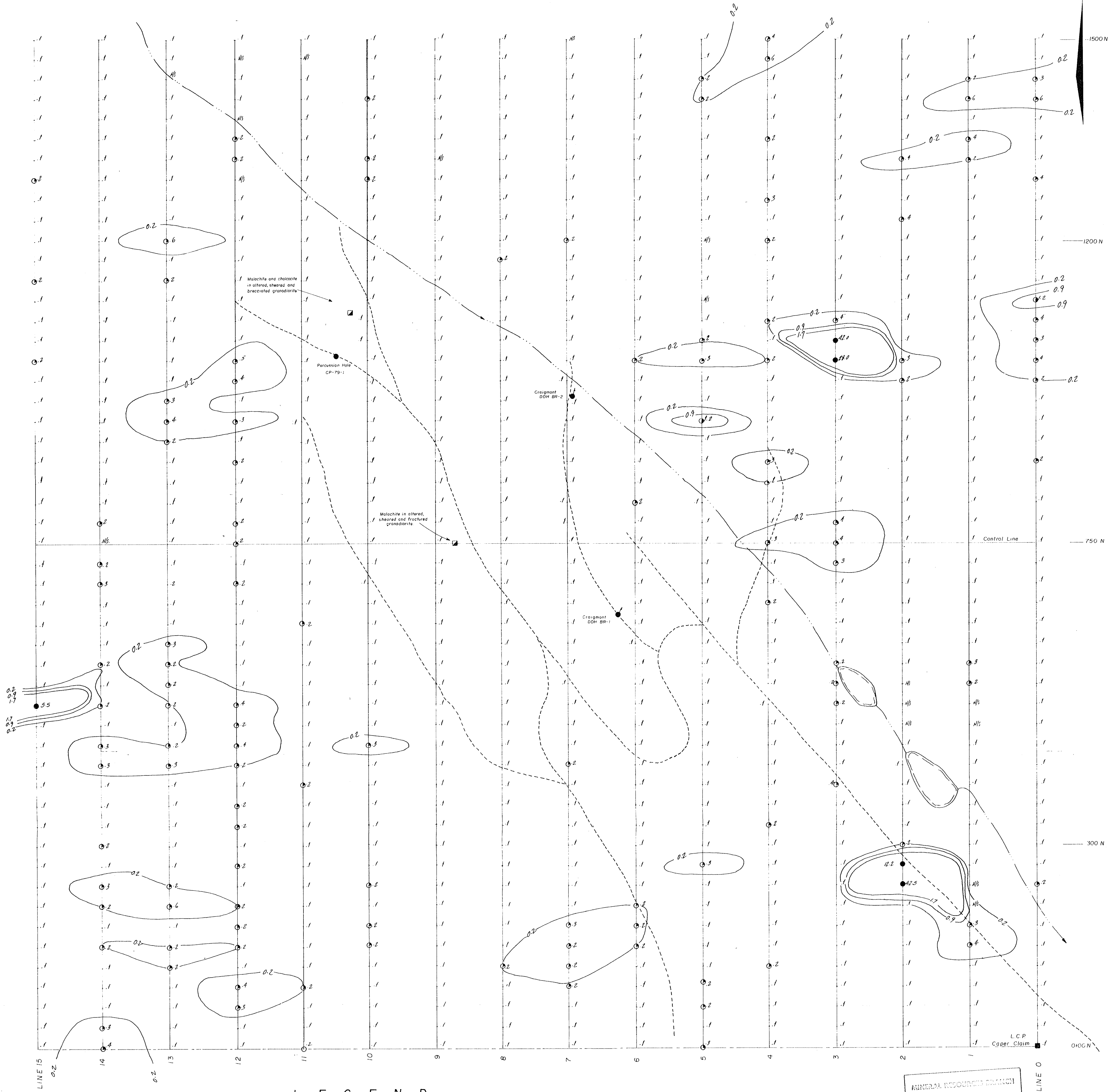
COPPER DISTRIBUTION IN SOILS

CAPER CLAIM

NICOLA MINING DIVISION, B.C.

TECH. WORK BY KERR, DAWSON AND ASSOCIATES LTD.	SCALE 1:3,000
DRAWN BY: W. G.	DATE: JAN. 1991.
APP'D BY: J. R. K.	FIG. NO. 223-4

To accompany a report by J.R. Kerr, P.Eng.



- L E G E N D -

- CREEK
- ACCESS ROAD
- POND
- CLAIM BOUNDARY AND LEGAL CORNER POST (LCP)
- GRID LINE WITH SOIL SAMPLE LOCATION. GEOCHEMICAL VALUES FOR COPPER AND SILVER EXPRESSED IN PARTS PER MILLION (PPM)
- COMPLETED DRILL HOLES
- SHAFT

GEOCHEMICAL CATEGORIES

	COPPER (PPM)	SILVER (PPM)
BACKGROUND	< 71	< 0.2
POSSIBLY ANOMALOUS	71 - 185	0.2 - 0.9
PROBABLY ANOMALOUS	186 - 299	1.0 - 1.7
DEFINITELY ANOMALOUS	> 299	> 1.7

MINERAL RESOURCES BRANCH
ASSESSMENT REPORT

8595

HERON RESOURCES LTD.

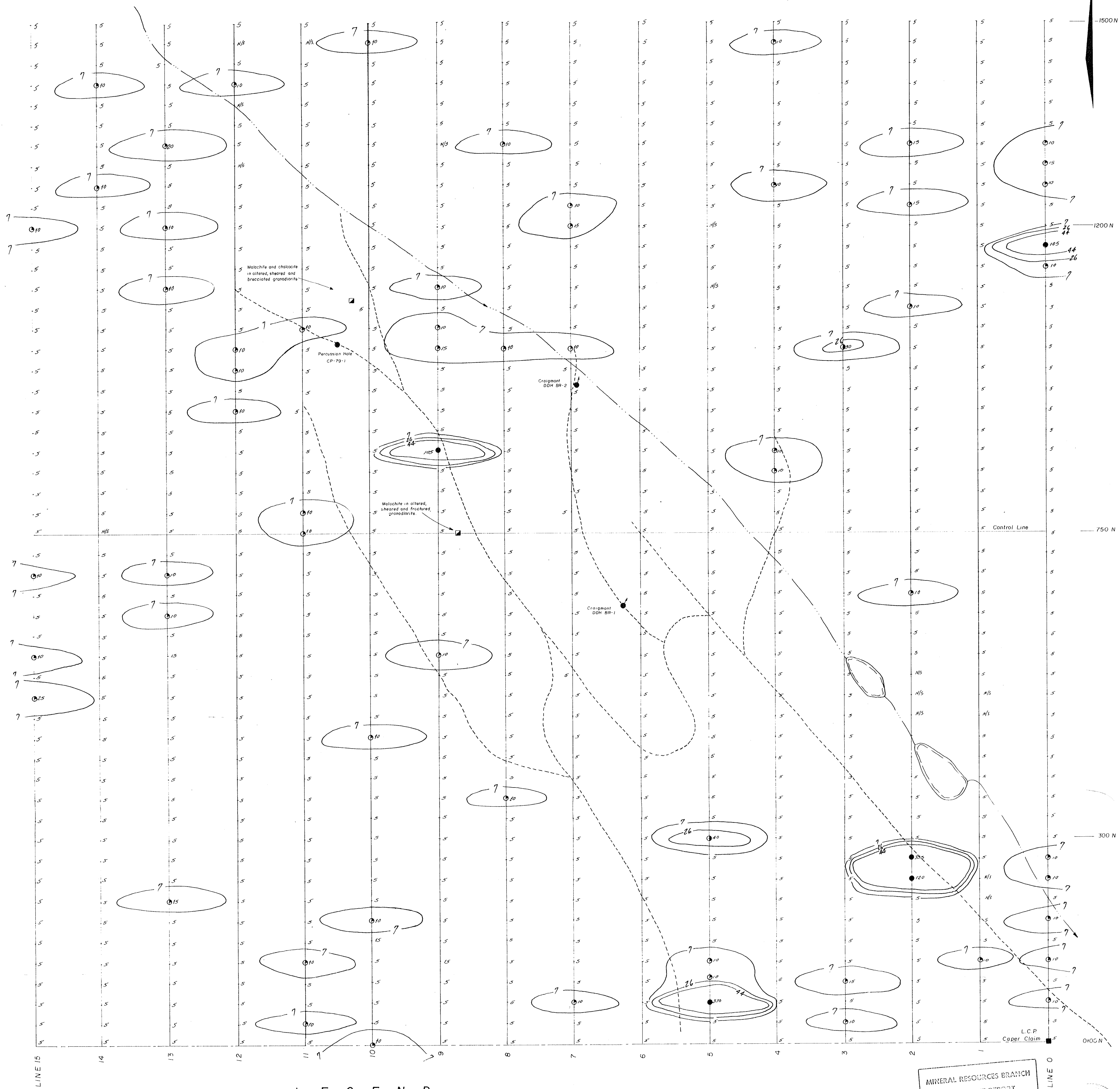
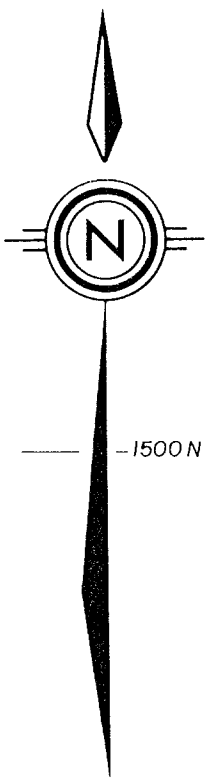
SILVER DISTRIBUTION IN SOILS

CAPER CLAIM

NICOLA MINING DIVISION, B.C.

TECH WORK BY KERR, DAWSON AND ASSOCIATES LTD.	SCALE: 1:3,000
DRAWN BY: W.G.	DATE: JAN 1981
APP'D BY: J.R.K.	FIG. NO. 223-5

To accompany a report by J.R. Kerr, P.Eng.



- L E G E N D -

- CREEK
- ACCESS ROAD
- POND
- CLAIM BOUNDARY AND LEGAL CORNER POST (LCP)
- GRID LINE WITH SOIL SAMPLE LOCATION - GEOCHEMICAL VALUES FOR COPPER AND SILVER EXPRESSED IN PARTS PER MILLION (PPM)
- COMPLETED DRILL HOLES
- SHAFT

GEOCHEMICAL CATEGORIES

	COPPER (PPM)	SILVER (PPM)	GOLD (PPB)
BACKGROUND	< 71	< 0.2	< 7
○ POSSIBLY ANOMALOUS	71 - 185	0.2 - 0.9	7 - 25
● PROBABLY ANOMALOUS	186 - 299	1.0 - 1.7	26 - 44
● DEFINITELY ANOMALOUS	> 299	> 1.7	> 44

MINERAL RESOURCES BRANCH
ASSESSMENT REPORT
8595

HERON RESOURCES LTD.
GOLD DISTRIBUTION IN SOILS
CAPER CLAIM
NICOLA MINING DIVISION, B.C.

TECH WORK BY KERR, DAWSON AND ASSOCIATES LTD.	SCALE: 1:3,000
DRAWN BY: W.O.	DATE: JAN. 1991
APP'D BY: J.R.K.	FIG. NO. 223-6

To accompany a report by J.R. Kerr, P.Eng.