

DIAMOND DRILL

REPORT ON THE

IRLY BIRD CLAIM

PRINCETON B.C.

IRLY BIRD (392) 7

SIMILKAMEEN M.D.

92 H/9W

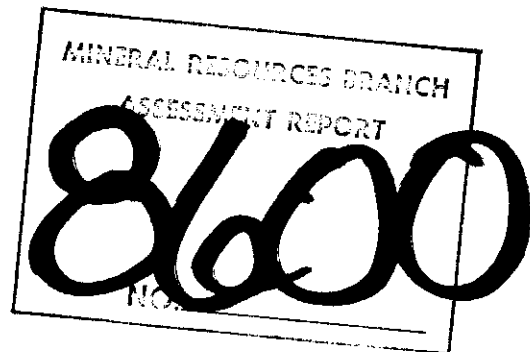
LAT. $49^{\circ} 32'$ LONG. $120^{\circ} 26'$

CLAIM OWNER : K.W. LIVINGSTONE

OPERATORS : JMT SERVICES CORP
VANCOUVER, B.C.

SUPERIOR OIL CO.
TUCSON ARIZONA. US.A.

AUTHOR : K.W.LIVINGSTONE.



INTRODUCTION:

The Irly Bird mineral claim is located about ten kilometers northeast from Princeton B.C. on the highway to Osprey lake near Jura Station. A paved road crosses the property. The drill targets were located on private land owned by Mr.W. Sellers. All construction activity was closely monitored in objective way by Mr. Sellers. The operators allowed for provision to rehabilitate all new road access and drill sites.

CONTRACTOR :

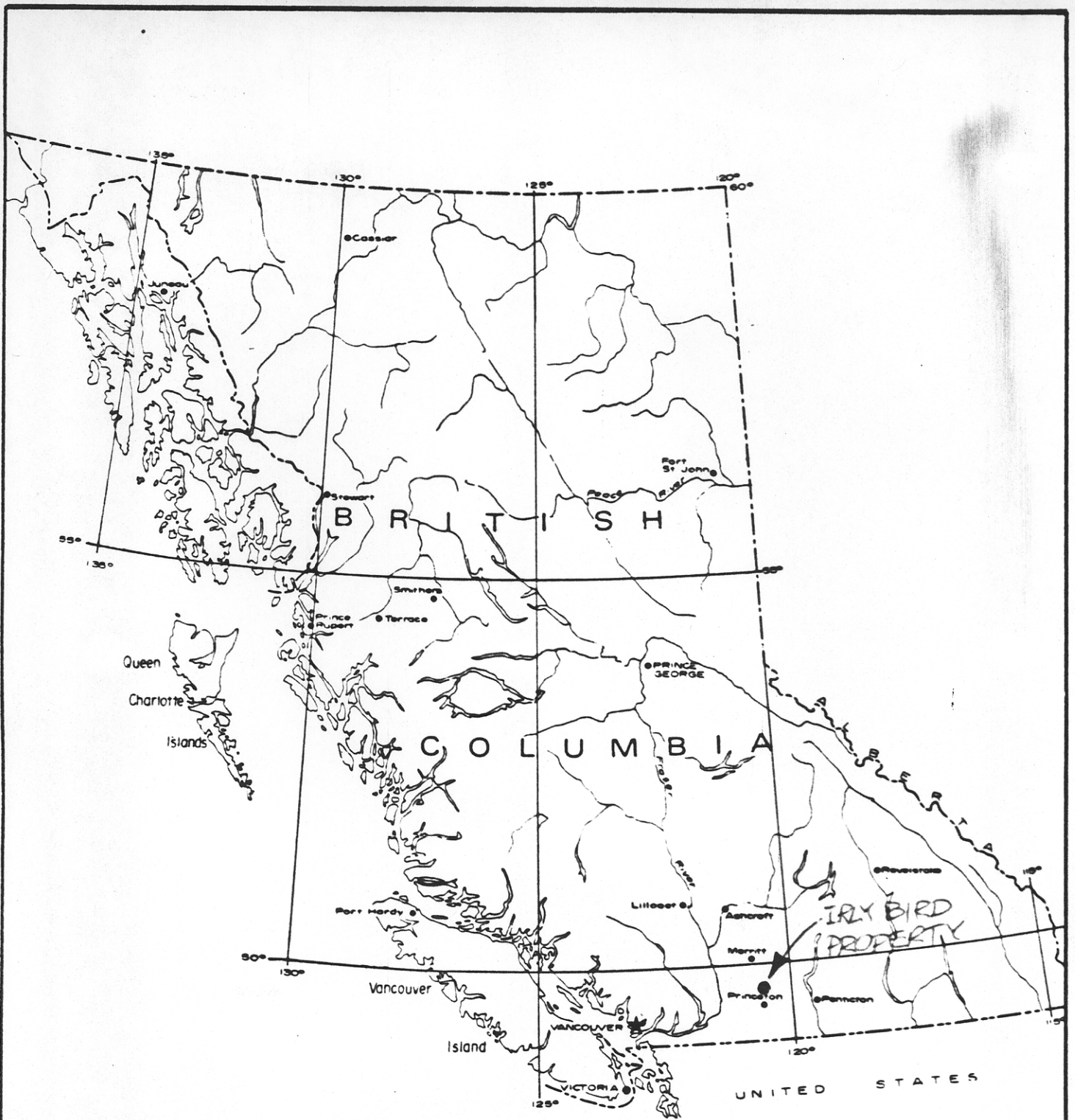
D.W.Coates Enterprises provided a Boyles B - 56 diamond drill. Two holes were drilled NQ to 1757 ft. (535.6 m) and 1308 ft (198.8 m.).

GEOLOGY:

The bedrock encountered in the drilling was Nicloa andesitic volcanics sediments and tuffs with minor microdrorite and feldspar porphyry dykes. The details are given in the drill logs.

RECOMMENDATIONS:

The sulphide system drilled in these two drill holes appears to weaken with depth. No economic mineralization was encountered. Any further potential for the property lies in an area of extensive post-mineral Princeton sandstone cover and no further drilling is recommended at this time.



J M T SERVICES CORP.			
PROPERTY LOCATION MAP			
SCALE Mile 0 136 Mile			
Prepared by:	Date :	NTS MAP AREA	DRAWING No.
Drawn by:	Revised:	93 - E	



SETTLER	2		SETTLER	1
	909 (12)		908 (12)	

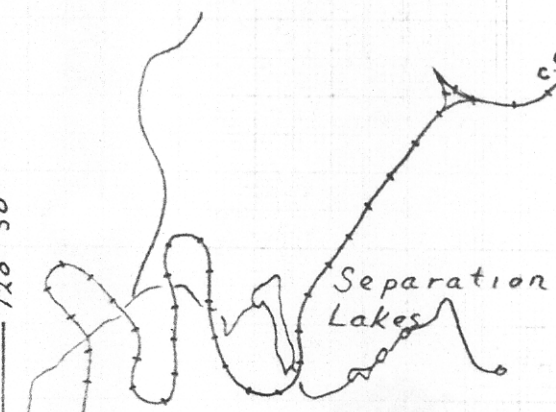
IRLY	BIRD
392	(7)

- JWG 1
876 (12)
- JWG 2
877 (12)
- JWG 3
878 (12)
- JWG 4
879 (12)
- JWG 5
880 (12)

- JWG 6
881 (12)
- JWG 7
882 (12)
- JWG 8
883 (12)
- JWG 9
884 (12)

- JWG 10
885 (12)
- JWG 11
886 (12)

120° 30'



49° 30' NTS 92 H/9w
NTS 92 H/8w

OLD	BAKOV	JWG	MINER
	393 (7)		543 (3)

JMT SERVICES CORP

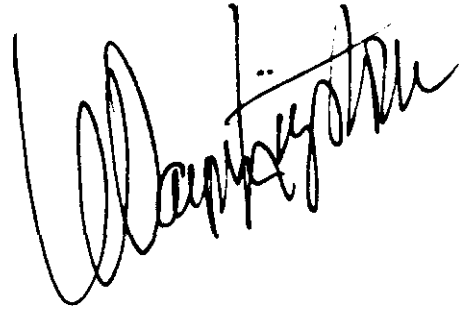
IRLY BIRD PROPERTY

SCALE 1:50000

STATEMENT OF COSTS

DRILL HOLE FC - 1 (79 - 1)

D.W.COATES Invoice 1635	\$23,777.78
1642	30,812.80
1660	19,927.91
JMT SERVICES CORP. Inv. December 18	
less assays and geophysics	3,050.13
DECEMBER 18 Time charges	
K.W.LIVINGSTONE, Geologist Nov.25-30 Dec. 3-7, Dec. 11-13	2,450.00
JAMES HANDFORD, core splitter Nov. 30-Dec. 13	1,050.00
W.A.HOWELL, Geologist Dec. 8 - 14, 17	1,000.00
MEALS 15 man days	262.50
December 18 invoice	896.95
December 18 invoice (2933.85	262.50
February 29 invoice (less assay charges)	4,524.72
February 29 invoice	3,187.50
September 2 invoice (less recording charges)	3,214.93
	<hr/>
TOTAL	\$94,417.72



PERSONEL USED ON PROJECT

CONTRACTOR: D.W.COATES ENTERPRISES

K.W.LIVINGSTONE, supervising geologist, JMT Services Corp.

J.LADD, Geologist, Superior Oil Co. Tucson Arizona

W.A.HOWELL, Geologist, JMT Services Corp.

J.A.HANDFOR, Core Splitter, JMT Services Corp.

STATEMENT OF QUALIFICATIONS

I, K.WAYNE LIVINGSTONE, residing at 4317 WEST BLVD.
Vancouver, British Columbia have the following degrees
in geology.

- 1) B.Sc. Hons. Geology, Carleton University, Ottawa 1966
- 2) M.Sc. Geology, University of British Columbia, Vancouver 1968.

I have practised my profession in economic geology
continuously since 1966.

A handwritten signature in black ink, appearing to read 'K. Wayne Livingstone', written in a cursive style.

K.Wayne Livingstone

D.W. COATES ENTERPRISES LTD.

2560 A Simpson Road,
Richmond, B.C. V6X 2P9

INVOICE NO. 1635

JOB NO.: 389

DATE: Dec 7/79

Superior Oil Company
c/o J. M. T. Services Corp.
8827 Hudson Street
Vancouver, B. C.
V6P 4N1

RE: Princeton B. C. Drilling

PERIOD: November 26 - 30, 1979

Drilling Detail	\$21,473.10
Mobilization	1,188.00
Travelling Time	225.00
Drilling with Mud	167.00
Core Boxes	724.68
	<u>\$23,777.78</u>

POSTED

DEC 14 1979

D.W. COATES ENTERPRISES LTD.

2560 A Simpson Road
Richmond, B.C. V6X 2P9

INVOICE NO. 1642

JOB NO.: 389

DATE Dec 14/79

Superior Oil Company
c/o J.M.T. Services Corp.
8827 Hudson Street
Vancouver, B. C.

RE: Princeton, B. C. Drilling

PERIOD December 1 - 12, 1979

Drilling Detail	\$28,370.05
Moving between Holes	714.00
Travelling Time	475.00
Drilling with Mud	651.95
Hole Stabilizing	501.80
Other Charges	100.00
	<hr/>
	\$30,812.80
	<hr/>

cc: Mr. M. Wolfhard
P. O. Box 12487
Tucson, Arizona
85732

D.W. COATES ENTERPRISES LTD.

2560 A Simpson Road.
Richmond, B.C. V6X 2P9

INVOICE NO. 1660

JOB NO.: 389

DATE: Jan. 25/80

Superior Oil Company
c.o JMT Services Corp.
8827 Hudson St.
Vancouver, B.C.

RE: Princeton, B.C. Drilling
PERIOD: Jan. 6 - 17/80

Drilling Detail	\$ 9,073.40
Demobilization	2,120.50
Water Supply	5,404.00
Travelling Time	425.00
Drilling with Mud	821.95
Hole Stabilizing	1,659.06
Standby Time	114.00
Other Charges	310.00

\$19,927.91

*Not for payment
put in Superior File*

c/c: Mr. M. Wolfhard
P.O. Box 12487
Tucson, Arizona
85732

T Services Corp.

ON STREET · VANCOUVER, B.C. V6P 4N1 · TELEPHONE 266-8344



JAMES S. CHRISTIE, PhD	980-4642
K. WAYNE LIVINGSTONE, MSc	224-7343
GORDON G. RICHARDS, M.A. Sc., P.Eng.	327-3365
GERALD LAUZON, Mgr.	277-4778
W A HOWELL, Geol.	277-7082

DECEMBER 18, 1979

Mr. M. Wolfhard
Superior Oil Co.
Mineral Division
Tuscon, Arizona.

INVOICE: RE PIONEER PROJECT
DECEMBER 1979

November 18 - December 15 gas receipts	\$104.36
November 29 Johnston Freight	15.95
December Broadway Bulldozer	455.00
December 7 Herrick Enterprises	425.50
Wayne Lillies expense account	25.20
W.A.Howell expense account	349.12
	57.65
Bondar-Clegg invoice C 8819	- 428.40
K.W.Livingstone expense account	1315.36
Hudson Invoice 16949,16950	301.79
Premier Geophysics	- 5628.00
sub total	9106.53
plus 10%	910.65

CONT.....2

B/f: \$10,017.18

TIME CHARGES:

K. Livingstone, geologist

November 25-30, December 3-7, December 11-13

14 days @ 175.00

2450.00 ✓

supervise drill project

James Hnadford, W.Lillies - core splitter

November 30 - December 13 14 days @ 75.00

1050.00 ✓

W.A.Howell, geologist

December 8-14, 17 8 days @ 125.00

1000.00 ✓

Meals 15 amn days @ 17.50

262.50 ✓

~~\$24,779.68~~

14,811.09

PLEASE REMIT \$ 14,779.68

Pd. - Jan 16 / 80

K.W.LIVINGSTONE.

Services Corp.

STREET · VANCOUVER, B.C. V6P 4N1 · TELEPHONE 266-8344



JAMES S. CHRISTIE, PhD	980-4642
K. WAYNE LIVINGSTONE, MSc	224-7343
GORDON G. RICHARDS, M.A.Sc., P.Eng.	327-3365
GERALD LAUZON, Mgr.	277-4778
W.A. HOWELL, Geol.	277-7082

DECEMBER 18, 1979

Mr. M. Wolfhard
Superior Cil Co.
Mineral Division
Tucson, Arizona

INVOICE RE: PIONEER PROJECT
NOVEMBER 1979

K.W.LIVINGSTONE expense account	\$ 306.32
plus 10%	30.63

TIME CHARGES:

K.W.Livingstone, geologist

November 1 - 18, set up drill contract,
discussion I.P., meet drill contractor,
bulldozer operator and set up first site

3 days @ 175.00	525.00
-----------------	--------

meals 2 man days @ 17.50	35.00
--------------------------	-------

TOTAL	\$896.95 ✓
-------	------------

PLEASE REMIT \$ 896.95

PA
Jul 16 / 80

K.W.LIVINGSTONE

Services Corp.

VANCOUVER, B.C. V6P 4N1 · TELEPHONE 266-8344



JAMES S. CHRISTIE. PhD	980-46
K. WAYNE LIVINGSTONE. MSc	224-73
GORDON G. RICHARDS. M.A. Sc., P. Eng.	327-33
GERALD LAUZON. Mgr.	277-47
W.A. HOWELL. Geol.	277-708

DECEMBER 18, 1979

Mr. M. Wolfhard
Superior Oil Co.
Mineral Division
Tucson, Arizona.

INVOICE RE: PIONEER PROJECT

OCTOBER 1979

K.W. Livingstone Expense Account	\$ 873.63
JMT gas receipts	27.35
E.C. Telephone	74.32
	<hr/>
sub total	975.30
plus 10%	97.53

Time charges:

K.W. Livingstone, geologist	
place control lines, supervise IP survey, examine drill sites with contractor	
October 8 - 16 9 days @ 175.00	1575.00
meeting with land owner Mr. Sellers, and bulldozer contractor -	
October 23, 24 1½ days @ 175.00	262.50
meal expenses 10½ man days @ 17.50	183.75

TOTAL ~~\$3094.08~~
\$ 2933.85

PLEASE REMIT \$ 3094.08

K.W. LIVINGSTONE.

IMT Services Corp.

8827 HUDSON STREET · VANCOUVER, B.C. V6P 4N1 · TELEPHONE 266-8344



JAMES S. CHRISTIE, PhD	980-4642
K. WAYNE LIVINGSTONE, MSc	224-7343
GORDON G. RICHARDS, M.A. Sc., P.Eng.	327-3365
GERALD LAUZON, Mgr.	277-4778
W.A. HOWELL, Geol.	277-7082

February 29, 1980

Mr. M. Wolfhard,
Superior Oil Co.
Mineral Division
Tucson, Arizona.

Dear Mike,

INVOICE RE: PIONEER PROJECT
JANUARY 1980

Vangeochem invoice 5431	\$ 254.80
Bondar-Clegg invoice 8538	75.90
8920	785.85
8958	557.70
9174	180.60
	<i>1854.85</i>
Emery Freight	127.34
G.M. Lecheminant	57.00
K.W. LIVINGSTONE Expense Account	150.00 ✓
	202.85 ✓
	323.78 ✓
	74.36 ✓
	59.46 ✓
	12.05 ✓
W.A. HOWELL Expense Account	287.25
	28.55
B.C. Telephone	215.33
	<hr/>
sub total	3402.82
plus 10%	340.28
Gallant Trucking	2968.00
Xeroxing	8.75
	<hr/>
	\$6,379.57

PLEASE REMIT \$ 6,379.57

Pa - Km 80

K.W. LIVINGSTONE.

JMT Services Corp.

8827 HUDSON STREET · VANCOUVER, B.C. V6P 4N1 · TELEPHONE 266-8344



JAMES S. CHRISTIE, PhD	980-4642
K. WAYNE LIVINGSTONE, MSc	224-7343
GORDON G. RICHARDS, M.A.Sc., P.Eng.	327-3365
GERALD LAUZON, Mgr.	277-4778
W.A. HOWELL, Geol.	277-7082

FEBRUARY 29, 1980

Mr. M. Wolfhard
Superior Oil Co.
Mineral Division
Tuscon, Arizona.

Dear Mike,

INVOICE RE: PIONEER PROJECT
JANUARY 1980

TIME CHARGES

K.W. Livingstone, Geologist

JAN. 6 - 17 19-20 = 14 days @ 175.00 \$ 2450.00

W.A. Howell, Geologist

JAN. 11-13 19-20 = 5 days @ 125.00 625.00

Casual labour

15 hrs. @ 7.50 112.50

\$3,187.50

PLEASE REMIT \$ 3,187.50

paid Apr/80

K.W. LIVINGSTONE.

IMT Services Corp.

111 HEDSON STREET - VANCOUVER, B.C. V6P 4N1 - TELEPHONE 266-1811



JAMES S. CHRISTIE Ph.D. 225 8054
 K. WAYNE LIVINGSTONE, M.S. 224 7343
 GORDON G. RICHARDS, M.A.S., P.Eng. 327 3365
 GERALD LALZON, Mgr. 277 4778
 W.A. HOWELL, Geol. 277 7082

SEPTEMBER 2, 1980

Mr. M. Wolfhard
 Superior Oil Company
 Mineral Division
 TUCSON, ARIZONA.

Dear Mike,

INVOICE : RE PIONEER PROJECT

ITEM:

Vehicle Rental - Nov. 17 - 18	197.25
Nov. 25 - Dec. 15	828.00
Jan. 5 - 17	- 545.25
Apr. 19 - 20	- 187.25
May 17 - 18	- 187.25

Broadway Bulldozer	- 168.00
Telephone	- 2.39
Recording work •	975.00
Harrowing and seeding - Mr. Sellars	<u>250.00</u>
	1395.39
	+ 10% 139.54

Wages:	1544.93	1544.93
--------	---------	---------

K.W. Livingstone April 19-20, May 17-18 4 days @ 175.00	<u>700.00</u>
---	---------------

TOTAL \$4,189.93

Please Remit \$ 4,189.93.

* - To the limit 25000.00 as per agreement.
 Cost at the rate \$5.00 per \$100.00 applied.
 \$275.00 previously billed December 18, 1979.
 Balance \$1250.00
 - 275.00
\$975.00

Work will be applied on the anniversary date of the Notice to Group.

Yours truly,

NOTES:

THE SUPERIOR OIL COMPANY
Minerals Division

DRILL LOG

HOLE NO. PC 2
 PROPERTY Pioneer
 COLLAR ELEV. 2950'
 ATTITUDE Vertical
 COORD. _____
 DEPTH _____ TYPE DDH
 START _____
 LOGGED BY M.H., W.A.H., K.W.L.

Scale: 1" = 20'

ELEV.	FOOTAGE	% REC.	FRACTURE DATA	GRAPHIC LOG	DESCRIPTION AND REMARKS	ALTERATION							SULFIDES			ASSAYS							
						Bio	Ksp	Qtz	Ser	Arg	Chl	Epi	TOT SUL	DISS VN	PY/CP	Cu	Mo	Au	Ag				
			O C		0-31 overburden																		
2940	10		RQD: O C																				
2920	30	85	RQD: O C		31-36: felsic intrusive mafies att. to chl.																		
		98	RQD: O C		36 -> Porphyritic andesite - chlorite alt. gypsum-anhydrite fractures																		
2900	50	91	RQD: O C		49-52 felsic intrusive																		
		87	RQD: O C		55-58 several dykes felsic intrusive																		
2880	70	98	RQD: O C																				
		91	RQD: O C																				
2860	90	70	RQD: O C																				
		92	RQD: O C		95-98 fault gouge																		

8600

INTERVAL: from _____ to _____

INTERVAL: from _____ to _____

COMPOSITE ASSAYS	
------------------	--

COMPOSITE ASSAYS	
------------------	--

NOTES:

THE SUPERIOR OIL COMPANY
Minerals Division

DRILL LOG

HOLE NO. 102
PROPERTY Pioneer
COLLAR ELEV. 2950'
ATTITUDE Vertical
COORD. _____
DEPTH _____ IN E DDH _____
START _____
LOGGED BY J.H.H., W.A.H., C.W.L.

Scale: 1" = 20'

ELEV.	FOOTAGE	% REC.	FRACTURE DATA	GRAPHIC LOG	DESCRIPTION AND REMARKS	ALTERATION							SULFIDES			ASSAYS			
						Bio	Ksp	Qtz	Ser	Arg	Chl	Epi	TOT SUL	DISS VN	PY/CP	Cu	Mo	Au	Ag
2840	110	92	O RQD: C	1	gypsum - anhyd. fractures								4	1/2	50/1				
		97	O C									4	1/2	50/1					
2820	130	70	O RQD: C	1									4	1/2	50/1				
		94	O C									4	1/2	50/1					
2800	150	68	O RQD: C	1	153-154 fault gouge								3	1/2	50/1				
		69	O C									6	1/1	50/1					
		70	O C									6	2/1	50/1					
2880	170	88	O RQD: C	1									6	2/1	50/1				
		31	O C									5	2/1	50/1					
		70	O C									6	2/1	50/1					
2860	190	50	O RQD: C	1									6	2/1	50/1				
		13	O C									6	2/1	50/1					
		80	O C									6	2/1	50/1					
		66	O C																

INTERVAL: from _____ to _____

INTERVAL: from _____ to _____

COMPOSITE ASSAYS

--	--	--	--	--	--	--	--	--	--	--	--	--	--	--	--	--	--	--	--	--

COMPOSITE ASSAYS

--	--	--	--	--	--	--	--	--	--	--	--	--	--	--	--	--	--	--	--	--

NOTES:

THE SUPERIOR OIL COMPANY
Minerals Division

DRILL LOG

HOLE NO. PC 2
PROPERTY Pioneer
COLLAR ELEV. 2950'
ATTITUDE vertical
COORD. _____
DEPTH _____ DDH
START _____
LOGGED BY JH, WAH, DWL

Scale: 1" = 20'

ELEV.	FOOTAGE	% REC.	FRACTURE DATA	GRAPHIC LOG	DESCRIPTION AND REMARKS	ALTERATION							SULFIDES			ASSAYS			
						Bio	Ksp	Qtz	Ser	Arg	Chl	Epi	TOT SUL	DISS VN	PY/CF	Cu	Mo	Au	Ag
2740	210		O RQD: C	1 ww 4	211-212 fault								5	3/1	50/1				
			O RQD: C	ww ww 1	213-218 post mineral feldspar porphyry dyke								5	3/1	50/1				
2720	230		O RQD: C	ww ww 1	229-230 fault gouge								4	3/1	50/1				
			O RQD: C	4 4 1	246-249.5 feldspar porphyry dyke								5	1/1	50/1				
			O RQD: C	4 4 1	porphyritic andesite - chlorite alt.								6	1/1	50/1				
2680	270		O RQD: C	4 4 1	epidote is dominantly fracture controlled.								7	1/2	50/1				
			O RQD: C	4 4 1									5	1/2	50/1				
2660	290		O RQD: C	1									5	1/2	50/1				

INTERVAL: from _____ to _____

INTERVAL: from _____ to _____

COMPOSITE ASSAYS																				
------------------	--	--	--	--	--	--	--	--	--	--	--	--	--	--	--	--	--	--	--	--

COMPOSITE ASSAYS																				
------------------	--	--	--	--	--	--	--	--	--	--	--	--	--	--	--	--	--	--	--	--

NOTES:

THE SUPERIOR OIL COMPANY
Minerals Division

DRILL LOG

HOLE NO. PC 2
PROPERTY Pioneer
COLLAR ELEV 2950'
ATTITUDE vertical
COORD. _____
DEPTH _____
START _____
LOGGED BY W.H. KVL

Scale: 1" = 20'

ELEV.	FOOTAGE	% REC.	FRACTURE DATA	GRAPHIC LOG	DESCRIPTION AND REMARKS	ALTERATION							SULFIDES			ASSAYS				
						Bio	Ksp	Qtz	Ser	Arg	Chl	Epi	TOT SUL	DISS VN	PY/CP	Cu	Mo	Au	Ag	
2410	310	100	O RQD: C	1	minor qtz-carbonate veinlets gypsum-anhyd. fractures common hornblende hornblende (chl) porphyritic andesite and massive grey andesite the dominant lithology.									3	1/3	100/1				
2620	330	84	O RQD: C	1										3						
2600	350	93	O RQD: C	1										0.1	3/1	100/1				
2580	370	92	O RQD: C	1										3	1/3	100/1				
2560	300	103	O RQD: C	1										5	1/3	50/1				
			O RQD: C											2	2/1	50/1				
			O RQD: C											1	2/1	50/1				
			O RQD: C											2	1/1	100/1				
			O RQD: C											0.1	1/1	100/1				
			O RQD: C											5	3/1	100/1				
			O RQD: C											1	1/1	100/1				
			O RQD: C											5	3/1	100/1				

INTERVAL: from _____ to _____

INTERVAL: from _____ to _____

COMPOSITE ASSAYS

--	--	--	--	--	--	--	--	--	--	--	--	--	--	--	--	--	--	--	--	--

COMPOSITE ASSAYS

--	--	--	--	--	--	--	--	--	--	--	--	--	--	--	--	--	--	--	--	--

NOTES:

THE SUPERIOR OIL COMPANY
Minerals Division

DRILL LOG

HOLE NO. PC 2
PROPERTY Pioneer
COLLAR ELEV. 2950'
ATTITUDE vertical
COORD. _____
DEPTH _____ TYPE DDH
START _____ STOP _____
LOGGED BY J.M. WAH, K.M.

Scale: 1" = 20'

ELEV.	FOOTAGE	% REC.	FRACTURE DATA	GRAPHIC LOG	DESCRIPTION AND REMARKS	ALTERATION							SULFIDES			ASSAYS								
						Bio	Ksp	Qtz	Ser	Arg	Chl	Epi	TOT SUL	DISS VN	PY/CP	Cu	Mo	Au	Ag					
2540	410	100	O RQD: C	1	grey andesite																			
		99	O C		409-408 local zone increase in quartz veins and pyrite																			
2520	430	100	O RQD: C		410-430 quartz veins and gypsum fractures																			
		100	O C		430-440 increase in gypsum fractures																			
2500	450	98	O RQD: C																					
		97	O C		465-472 rubble - fault gouge.																			
2480	470	95	O RQD: C																					
		94	O C																					
		90	O C																					
2460	490	98	O RQD: C		1																			
		100	O C																					
		100	O C																					

INTERVAL: from _____ to _____

INTERVAL: from _____ to _____

COMPOSITE ASSAYS																								
------------------	--	--	--	--	--	--	--	--	--	--	--	--	--	--	--	--	--	--	--	--	--	--	--	--

COMPOSITE ASSAYS																								
------------------	--	--	--	--	--	--	--	--	--	--	--	--	--	--	--	--	--	--	--	--	--	--	--	--

NOTES:

THE SUPERIOR OIL COMPANY
Minerals Division

DRILL LOG

HOLE NO. PC 2
 PROPERTY Pioneer
 COLLAR ELEV. 2950'
 ATTITUDE vertical
 COORD. _____
 DEPTH _____ TYPE DDH
 START _____
 LOGGED BY J.H. W.A.H. E.W.L.

Scale: 1" = 20'

ELEV.	FOOTAGE	% REC.	FRACTURE DATA	GRAPHIC LOG	DESCRIPTION AND REMARKS	ALTERATION							SULFIDES			ASSAYS			
						Bio	Ksp	Qtz	Ser	Arg	Chl	Epi	TOT SUL	DISS V%N	PY/CP	Cu	Mo	Au	Ag
2140	810		O C RQD: O C										3	1/2	50/1				
2120	830		O C RQD: O C		gauge core angle 60°-45°								4	2/3	50/1				
2100	850		O C RQD: O C		35° dip slope slickensides clay-hematite								7	2/3	50/1				
2080	870		O C RQD: O C										2	1/1	50/1				
2060	890		O C RQD: O C		anhydrite on fractures								1	1/1	100/1				
			O C RQD: O C										1	1/1	100/1				
			O C RQD: O C										1	1/1	100/1				
			O C RQD: O C										0.5	1/1	100/1				
			O C RQD: O C										1	1/1	100/1				

INTERVAL: from _____ to _____

INTERVAL: from _____ to _____

COMPOSITE ASSAYS																			
------------------	--	--	--	--	--	--	--	--	--	--	--	--	--	--	--	--	--	--	--

COMPOSITE ASSAYS																			
------------------	--	--	--	--	--	--	--	--	--	--	--	--	--	--	--	--	--	--	--

THE SUPERIOR OIL COMPANY
Minerals Division

DRILL LOG

HOLE NO. PC 2
PROPERTY Pioneer
COLLAR ELEV. 2950'
ATTITUDE Vertical
COORD. _____
DEPTH _____ TYPE DDH
START _____ STOP _____
LOGGED BY W.A.H. KWL.

Scale: 1" = 20'

ELEV.	FOOTAGE	% REC.	FRACTURE DATA	GRAPHIC LOG	DESCRIPTION AND REMARKS	ALTERATION							SULFIDES			ASSAYS			
						Bio	Ksp	Qtz	Ser	Arg	Chl	Epi	TOT SUL	DISS VN	PY/CP	Cu	Mo	Au	Ag
2040	910		O C RQD: O C		fault zone 910-11 andesitic tuff. and grey andesite 925 → increasing anhydrite and calcite fractures								1	1	100				
2020	930		O C RQD: O C											0.5	1	100			
2000	950		O C RQD: O C										2	2	100				
			O C RQD: O C										2.5	3	100				
1980	970		O C RQD: O C										3	4	100				
			O C RQD: O C										2	4	100				
1960	990		O C RQD: O C		andesite tuff subhorizontal layering and laminations								1.5	4	100				
			O C RQD: O C										3	4	100				
			O C RQD: O C										2.5	4	100				
			O C RQD: O C										2	4	100				

INTERVAL: from _____ to _____

INTERVAL: from _____ to _____

COMPOSITE ASSAYS																				
------------------	--	--	--	--	--	--	--	--	--	--	--	--	--	--	--	--	--	--	--	--

COMPOSITE ASSAYS																				
------------------	--	--	--	--	--	--	--	--	--	--	--	--	--	--	--	--	--	--	--	--

THE SUPERIOR OIL COMPANY
Minerals Division

DRILL LOG

HOLE NO. PC 2
PROPERTY Pioneer
COLLAR ELEV. 2950'
ATTITUDE vertical
COORD. _____
DEPTH _____ TYPE DDH
START _____
LOGGED BY J.H. W.A.H., K.W.L.

Scale: 1" = 20'

ELEV.	FOOTAGE	% REC.	FRACTURE DATA	GRAPHIC LOG	DESCRIPTION AND REMARKS	ALTERATION						SULFIDES			ASSAYS				
						Bio	Ksp	Qtz	Ser	Arg	Chl	Epi	TOT SUL	DISS VN	PY/CP	Cu	Mo	Au	Ag
1940	1010		O C RQD: O C	1 b	<i>laminated tuff gypsum-anhydrite and calcite on fractures</i>								4	5/1	100/1				
1920	1030		O C RQD: O C		<i>minor andesite flows with local microdiorite</i>								4	4/1	100/1				
1900	1050		O C RQD: O C										2	5/1	100/1				
			O C RQD: O C										2	4/1	100/1				
1880	1070		O C RQD: O C	1 b									1.5	5/1	100/1				
			O C RQD: O C										1	5/1	100/1				
1860	1090		O C RQD: O C										1	3/1	100/1				
			O C RQD: O C										3	5/1	100/1				

INTERVAL: from _____ to _____

INTERVAL: from _____ to _____

COMPOSITE ASSAYS																			
------------------	--	--	--	--	--	--	--	--	--	--	--	--	--	--	--	--	--	--	--

COMPOSITE ASSAYS																			
------------------	--	--	--	--	--	--	--	--	--	--	--	--	--	--	--	--	--	--	--

NOTES:

THE SUPERIOR OIL COMPANY
Minerals Division

DRILL LOG

HOLE NO. PC 2
PROPERTY Pioneer
COLLAR ELEV. 2950'
ATTITUDE vertical
COORD. _____
DEPTH _____
START _____
LOGGED BY W.A.H. K.W.L.

Scale: 1" = 20'

ELEV.	FOOTAGE	% REC.	FRACTURE DATA	GRAPHIC LOG	DESCRIPTION AND REMARKS	ALTERATION							SULFIDES			ASSAYS			
						Bio	Ksp	Qtz	Ser	Arg	Chl	Epl	TOT SUL	DISS VN	PY/CP	Cu	Pb	Au	Ag
1840	1110		O RQD: C	1	fine disseminated magnetite in some andesite flows								3	5/1	100/1				
1820	1130		O RQD: C	1	dominantly tuff								3.5	5/1	100/1				
1800	1150		O RQD: C	1	locally well laminated subhorizontal.								3	5/1	100/1				
1780	1170		O RQD: C	1									2	5/1	100/1				
1760	1190		O RQD: C	1									1.5	4/1	100/1				
			O RQD: C	1									1.5	5/1	100/1				
			O RQD: C	1									2	5/1	100/1				
			O RQD: C	1									1	5/1	100/1				

INTERVAL: from _____ to _____

INTERVAL: from _____ to _____

COMPOSITE ASSAYS

--	--	--	--	--	--	--	--	--	--	--	--	--	--	--	--	--	--	--	--	--

COMPOSITE ASSAYS

--	--	--	--	--	--	--	--	--	--	--	--	--	--	--	--	--	--	--	--	--

THE SUPERIOR OIL COMPANY
Minerals Division

DRILL LOG

HOLE NO. PC 2
 PROPERTY Pioneer
 COLLAR ELEV 2950'
 ATTITUDE vertical
 COORD. _____
 DEPTH _____ TYPE DDH
 START _____ STOP _____
 LOGGED BY M.H. W.A.H., K.W.L.

Scale: 1" = 20'

ELEV.	FOOTAGE	% REC.	FRACTURE DATA	GRAPHIC LOG	DESCRIPTION AND REMARKS	ALTERATION							SULFIDES			ASSAYS			
						Bio	Ksp	Qtz	Ser	Arg	Chl	Epi	TOT SUL	DISS VN	PY/CP	Cu	Mo	Au	Ag
1740-1210			O C RQD: O C		gypsum-anhydrite on fractures								1	5/1	100/1				
1720-1230			O C RQD: O C		dominantly andesitic tuff with minor flows								1	5/1	100/1				
1700-1250			O C RQD: O C		local fresh perphyritic hornblende.								1	5/1	100/1				
1680-1270			O C RQD: O C										0.5	10/1	100/1				
1660-1290			O C RQD: O C										2	5/1	100/1				
			O C RQD: O C										2	5/1	100/1				
			O C RQD: O C										1	5/1	100/1				
			O C RQD: O C										1	5/1	100/1				

INTERVAL: from _____ to _____

INTERVAL: from _____ to _____

COMPOSITE ASSAYS

--	--	--	--	--	--	--	--	--	--	--	--	--	--	--	--	--	--	--	--	--

COMPOSITE ASSAYS

--	--	--	--	--	--	--	--	--	--	--	--	--	--	--	--	--	--	--	--	--

THE SUPERIOR OIL COMPANY
Minerals Division

DRILL LOG

HOLE NO. PC 2
PROPERTY Pioneer
COLLAR ELEV 2950'
ATTITUDE vertical
COORD. _____
DEPTH _____ TYPE DDH
START _____ STOP _____
LOGGED BY W.A.H., K.W.L.

Scale: 1" = 20'

ELEV.	FOOTAGE	% REC.	FRACTURE DATA	GRAPHIC LOG	DESCRIPTION AND REMARKS	ALTERATION							SULFIDES			ASSAYS				
						Bio	Ksp	Qtz	Ser	Arg	Chl	Epi	TOT SUL	DISS VN	PY/CP	Cu	Mo	Au	Ag	
1140-1310			O C RQD: O C	1 b E.O.H.	laminated andesitic tuff with minor flows and microdiorite gypsum-anhydrite continuous to the E.O.H. 1318 ft.									1	5/1	100/1				
			O C RQD: O C											1	5/1	100/1				
			O C RQD: O C		The core is stored at 8827 Hudson Street Vancouver B.C.															
			O C RQD: O C																	
			O C RQD: O C																	
			O C RQD: O C																	

8600

INTERVAL: from _____ to _____

INTERVAL: from _____ to _____

COMPOSITE ASSAYS															
------------------	--	--	--	--	--	--	--	--	--	--	--	--	--	--	--

COMPOSITE ASSAYS															
------------------	--	--	--	--	--	--	--	--	--	--	--	--	--	--	--

DRILL LOG

PC-1

PROPERTY Pioneer
 COLLAR ELEV. 3000'
 ATTITUDE vertical
 COORD. 49° 32.5' N 120° 26.1' W
 DEPTH 1757' TYPE DDH
 START 11/26/79 STOP 12/6/79
 LOGGED BY JHL

Scale 1" = 20'

ELEV.	FOOTAGE	% REC.	FRACTURE DATA	GRAPHIC LOG	DESCRIPTION AND REMARKS	ALTERATION							SULFIDES			ASSAYS				
						Bio	Ksp	Qtz	Ser	Arg	Chl	Epi	TOT SUL	DISS VN	PY/CP	Cu	Mo	Au	Ag	
2890	110	55	O C RQD	1									1-3	1/0	100/1					
		92	O C	1									3-4	1/0	100/1					
		100	O C	1																
2870	130	92	O C RQD	1	125-130': A few narrow (0.1") veinlets of pyrite.								3-5	1/1	100/1					
		95	O C	1									1-2	1/0	100/1					
		90	O C	1																
2850	150	100	O C RQD	1	140-155': Veins consist mostly (>90%) of gypsum. 141: Minor disseminated azurite.								1-2	1/0	100/1					
		98	O C	1									<1	1/1	100/0					
		97	O C RQD	1	155-165: Microdiorite dyke. Pyroxene & feldspar phenocrysts in f.g., grey matrix. Minor fracturing. Weak to non-existent alteration. Country rock is brecciated for two feet below dyke.								3-4	1/0	100/1					
2830	170	89	O C	1									2-4	1/0	100/1					
		100	O C RQD	1	180-186: Microdiorite dyke. Rock below dyke contains several pyrite veinlets.								<1	1/0	100/0					
2810	190	100	O C	1									2-10	0/1	100/1					
		99	O C	1									2-7	1/0	100/1					

INTERVAL: from _____ to _____

INTERVAL: from _____ to _____

COMPOSITE ASSAYS																			
------------------	--	--	--	--	--	--	--	--	--	--	--	--	--	--	--	--	--	--	--

COMPOSITE ASSAYS																			
------------------	--	--	--	--	--	--	--	--	--	--	--	--	--	--	--	--	--	--	--

THE SUPERIOR OIL COMPANY
Minerals Division

PC-1

HOLE NO. _____
PROPERTY Pioneer
COLLAR ELEV. 3000'
ATTITUDE vertical
COORD. 49° 32.5' N 120° 26.1' W
DEPTH 1757' TYPE DDH
START 11/26/79 STOP 12/6/79
LOGGED BY JHL

DRILL LOG

Scale 1" = 20'

ELEV.	FOOTAGE	% REC.	FRACTURE DATA	GRAPHIC LOG	DESCRIPTION AND REMARKS	ALTERATION							SULFIDES			ASSAYS					
						Bio	Ksp	Qtz	Ser	Arg	Chl	Epi	TOT SUL	DISS V% /	PY / CF	Cu	Mo	Au	Ag		
2790	210	99	O C RQD : C		1	204-205: Microdiorite dyke.															
2770	230	99	O C RQD : C		T/S	225-231: Microdiorite dyke.															
2750	250	100	O C RQD : C			245: Six-inch vein of qtz-gypsum-epi-calcite. Rock near vein enriched in pyrite.															
2730	270	100	O 13 C 9 RQD : 61 C			276: Fault gouge for a half foot interval. Rock brecciated for one foot on either side.															
2710	290	95	O 14 C 10 RQD : 62 C		T/S	294-296: Fault gouge.															

INTERVAL: from _____ to _____

INTERVAL: from _____ to _____

COMPOSITE

COMPOSITE

3818

**THE SUPERIOR OIL COMPANY
Minerals Division**

DRILL LOG

PC-1

PROPERTY Pioneer
 COLLAR ELEV. 3000'
 ATTITUDE vertical
 COORD. 49° 32.5' N 120° 26.1' W
 DEPTH 1757' TYPE DDH
 START 11/26/79 STOP 12/6/79
 LOGGED BY JHL

Scale: 1" = 20'

ELEV.	FOOTAGE	% REC.	FRACTURE DATA	GRAPHIC LOG	DESCRIPTION AND REMARKS	ALTERATION							SULFIDES			ASSAYS			
						Bio	Ksp	Qtz	Ser	Arg	Chl	Epi	TOT SUL	DISS /VN	PY /CP	Cu	Mo	Au	Ag
2690	310	100	O 18 C 7 RQD: 60		309: Fault gouge.								2-4	100 / 1	100 / 1				
		96	O C			1-3	1 / 0	100 / 1											
2670	330	93	O 21 C 15 RQD: 54		326-327: Fault gouge.								1-3	1 / 0	100 / 1				
		97	O C			1-3	1 / 0	100 / 1											
2650	350	95	O 9 C 12 RQD: 29		351-352: Fault gouge.								1-3	1 / 0	100 / 1				
		100	O C			1-2	1 / 0	100 / 1											
2630	370	100	O 17 C 9 RQD: 18		375: Fault gouge.								1-2	1 / 0	100 / 1				
		100	O C			1-2	1 / 0	100 / 1											
2610	390	96	O 12 C 8 RQD:		385: Fault gouge.								1-2	50 / 1	100 / 1				
		100	O C			1-3	100 / 1	100 / 1											

INTERVAL from _____ to _____

INTERVAL: from _____ to _____

COMPOSITE ASSAYS

--	--	--	--	--	--	--	--	--	--	--	--	--	--	--	--	--	--	--	--

COMPOSITE ASSAYS

--	--	--	--	--	--	--	--	--	--	--	--	--	--	--	--	--	--	--	--

DRILL LOG

COLLAR ELEV. 3000'
ATTITUDE vertical
COORD. 49° 32.5' N 120° 26.1' W
DEPTH 1757' TYPE DDH
START 11/26/79 STOP 12/6/79
LOGGED BY JHL

Scale: 1" = 20'

ELEV.	FOOTAGE	% REC.	FRACTURE DATA	GRAPHIC LOG	DESCRIPTION AND REMARKS	ALTERATION							SULFIDES			ASSAYS				
						Bio	Ksp	Qtz	Ser	Arg	Chl	Epi	TOT SUL	DISS /VN	PY /CF	Cu	Mo	Au	Ag	
2490	510	100	O C RQD: 1										1-2	25 /1	100 /1					
		92	O C									2-5	100 /1	100 /1						
		100	O C RQD: 1		525-530: Fault gouge. Fault plane filled with clay.								2-3	100 /1	100 /1					
2470	530	83	O C										1-3	100 /1	100 /1					
		87	O C		538-543: Several narrow zones of fault gouge.								2-5	1 /0	100 /1					
		100	O C RQD: 1		550: Quartz-pyrite vein (0.1" wide) extends across core.								3-4	50 /1	100 /1					
2450	550	99	O C										1-3	1 /0	100 /1					
		90	O 12 C 16 RQD: 28										1-3	100 /1	100 /1					
		74	O C		581-583: Fault gouge.								1-3	50 /1	100 /1					
2430	570	96	O 10 C 6 RQD: 51										0	-	-					
		97	O C		590 1/2-600: Microdiorite dyke.															
		91	O C																	

INTERVAL: from _____ to _____

INTERVAL: from _____ to _____

COMPOSITE ASSAYS																				
------------------	--	--	--	--	--	--	--	--	--	--	--	--	--	--	--	--	--	--	--	--

COMPOSITE ASSAYS																				
------------------	--	--	--	--	--	--	--	--	--	--	--	--	--	--	--	--	--	--	--	--

DRILL LOG

PC-1

PROPERTY _____

COLLAR ELEV. 3000'
 ATTITUDE vertical
 COORD. 49° 32.5' N 120° 26.1' W
 DEPTH 1757' TYPE DDH
 START 11/26/79 STOP 12/6/79
 LOGGED BY JHL

Scale: 1" = 20'

ELEV.	FOOTAGE	% REC.	FRACTURE DATA	GRAPHIC LOG	DESCRIPTION AND REMARKS	ALTERATION							SULFIDES			ASSAYS					
						Bio	Ksp	Qtz	Ser	Arg	Chl	Epi	TOT SUL	DISS V% /	PY / CP	Cu	Mo	Au	Ag		
2190	810	69	O 13 C RQD: 14																		
		76	O C																		
		100	O C																		
2170	830	90	O 8 C 7 RQD: 54																		
		45	O C																		
		70	O 9 C 7 RQD: 23																		
2150	850	88	O C																		
		100	O C																		
		90	O 6 C 4 RQD: 50																		
2130	870	61	O C																		
		73	O 11 C 18 RQD: 77																		
		95	O C																		
2110	890	73	O C		T/S 890: At this point, sulfides begin a gradual change from being f.g. & evenly dissem. to being concentrated in circular patches or in short thick veins. Stockwork becomes less well-developed. The amt of gypsum in veins decreases. Propylitic alteration becomes pervasive.																
		73	O C																		
		95	O C																		

INTERVAL: from _____ to _____

INTERVAL: from _____ to _____

COMPOSITE ASSAYS

COMPOSITE ASSAYS

DRILL LOG

COLLAR ELEV. 3000'
 ATTITUDE vertical
 COORD. 49° 32.5' N 120° 26.1' W
 DEPTH 1757' TYPE DDH
 START 11/26/79 STOP 12/6/79
 LOGGED BY JHL

Scale: 1" = 20'

ELEV.	FOOTAGE	% REC.	FRACTURE DATA	GRAPHIC LOG	DESCRIPTION AND REMARKS	ALTERATION							SULFIDES			ASSAYS			
						Bio	Ksp	Qtz	Ser	Arg	Chl	Epi	TOT SUL	DISS VN	PY/CP	Cu	Mo	Au	Ag
2090	910	96	O 8 C 6 RQD: 53		903: Vein with pyrite + epidote + chlorite.								4-6	20 /1	100 /1				
		97	O C		911-913: Fault gouge.														
		96	O C												2-4	20 /1	100 /1		
2070	930	79	O 6 C 6 RQD: 42		921-925: Fault gouge.									20	100				
		100	O C																
		97	O C		933: Well-defined fault, 85°, with clay & minor pyrite filling.										2-5	10 /1	100 /1		
2050	950	97	O 9 C 12 RQD: 85											10	100				
		70	O C		950-958: Large fault ranging from 70°-90°, Minor brecciation on both sides of fault. Fault filled with clay and minor (<10%) pyrite.														
		100	O C												2-5	50 /1	100 /1		
2030	970	90	O 7 C 9 RQD: 55											10	100				
		90	O C																
		90	O C												2-5	50 /1	100 /1		
2010	990	94	O 4 C 8 RQD: 79											20	100				
		97	O C																
		97	O C												2-5	10 /1	100 /1		

INTERVAL: from _____ to _____

INTERVAL: from _____ to _____

COMPOSITE ASSAYS

--	--	--	--	--	--	--	--	--	--	--	--	--	--	--	--	--	--	--	--	--

COMPOSITE ASSAYS

--	--	--	--	--	--	--	--	--	--	--	--	--	--	--	--	--	--	--	--	--

DRILL LOG

COLLAR ELEV. 3009'
 ATTITUDE vertical
 COORD. 49° 32.5' N; 120° 26.1' W
 DEPTH 1757' TYPE DDH
 START 11/26/79 STOP 12/6/79
 LOGGED BY JHL

Scale: 1" = 20'

ELEV.	FOOTAGE	% REC.	FRACTURE DATA	GRAPHIC LOG	DESCRIPTION AND REMARKS	ALTERATION							SULFIDES			ASSAYS								
						Bio	Ksp	Qtz	Ser	Arg	Chl	Epi	TOT SUL	DISS V/N	PY/CP	Cu	Mo	Au	Ag					
1990	1010	97	O 12 C 14 RQD: 97																					
		94	O C												2-5	10/1	100/1							
1970	1030	95	O 11 C 16 RQD: 86																					
		96	O C												2-5	20/1	100/1							
1950	1050	97	O 8 C 16 RQD: 84			1039-1045: Breccia. Clasts, up to 1" across, of the altered andesite in a light colored, medium grained matrix. Sulfide content less than in surrounding andesite.																		
		97	O C		T/S										4-4	10/1	100/1							
1930	1070	94	O 12 C 9 RQD: 74																					
		94	O C																					
1910	1090	94	O 6 C 11 RQD: 82																					
		90	O C																					

INTERVAL: from _____ to _____

INTERVAL: from _____ to _____

COMPOSITE ASSAYS																			
------------------	--	--	--	--	--	--	--	--	--	--	--	--	--	--	--	--	--	--	--

COMPOSITE ASSAYS																			
------------------	--	--	--	--	--	--	--	--	--	--	--	--	--	--	--	--	--	--	--

THE SUPERIOR OIL COMPANY
Minerals Division

PC-1

WELL NO. _____
PROPERTY Pioneer
COLLAR ELEV. 3000'
ATTITUDE vertical
COORD. 49° 32.5' N 120° 26.1' W
DEPTH 1757' TYPE DDH
START 11/26/79 STOP 12/6/79
LOGGED BY JHL

DRILL LOG

Scale 1" = 20'

ELEV.	FOOTAGE	% REC.	FRACTURE DATA	GRAPHIC LOG	DESCRIPTION AND REMARKS	ALTERATION							SULFIDES			ASSAYS							
						Bio	Ksp	Qtz	Ser	Arg	Chl	Epi	TOT SUL	DISS V/VN	PY/CP	Cu	Mo	Au	Ag				
1890	1110	90	O 7 C 8 RQD: 85		1										2-4	20 / 1	100 / 1						
		94	O C													2-4	20 / 1	100 / 1					
		95			1	1117-1120: Numerous faults. Country rock brecciated. Fault planes filled with clay.																	
1870	1130	99	O 8 C 14 RQD: 77													3-5	10 / 1	100 / 1					
		100	O C				1127: Vein of pyrite, 0.2" wide, extending across core.									2-5	10 / 1	100 / 1					
1850	1150	99	O 14 C 7 RQD: 81		1											2-3	50 / 1	100 / 1					
		100	O C			T/S										2	100 / 1	100 / 1					
1830	1170	97	O 3 C 6 RQD: 70		1											2-3	20 / 1	100 / 1					
		86	O C				1170-1177: Several fractures filled with chlorite & a pale green mineral (celadonite?). Veins up to 0.3" wide.									1-3	10 / 1	100 / 1					
1810	1190	89	O 8 C 2 RQD: 74		1											2-3	50 / 1	100 / 1					
		100	O C													2-4	20 / 1	100 / 1					

INTERVAL: from _____ to _____

INTERVAL: from _____ to _____

COMPOSITE ASSAYS	
------------------	--

COMPOSITE ASSAYS	
------------------	--

THE SUPERIOR OIL COMPANY
Minerals Division

PC-1

PROPERTY Pioneer

DRILL LOG

COLLAR ELEV. 3000'
ATTITUDE vertical
COORD. 49° 32.5' N 120° 26.1' W
DEPTH 1757' TYPE DDH
START 11/26/79 STOP 12/6/79
LOGGED BY JHL

Scale: 1" = 20'

ELEV.	FOOTAGE	% REC.	FRACTURE DATA	GRAPHIC LOG	DESCRIPTION AND REMARKS	ALTERATION							SULFIDES			ASSAYS					
						Bio	Ksp	Qtz	Ser	Arg	Chl	Epi	TOT SUL	DISS /VN	PY /CP	Cu	Mo	Au	Ag		
1790	1210	100	O 7 C 9 RQD: 68		1209-1220: Major near vertical fault.									2-5	20 /1	100 /1					
		97													2-3	100 /1	100 /1				
1770	1230	98	O 20 C 14 RQD: 59												1-3	50 /1	100 /1				
		100													1-3	20 /1	100 /1				
1750	1250	100	O 16 C 8 RQD: 28		T/S										1-3	50 /1	100 /1				
		92			T/S										1-2	50 /1	100 /1				
1730	1270	100	O 23 C 9 RQD: 47												1-3	50 /1	100 /1				
		100													2-5	20 /1	100 /1				
1710	1290	100	O 20 C 11 RQD: 59												2-5	10 /1	100 /1				
		88													3-5	5 /1	100 /1				
		98																			

INTERVAL from _____ to _____

INTERVAL: from _____ to _____

COMPOSITE ASSAYS																				
------------------	--	--	--	--	--	--	--	--	--	--	--	--	--	--	--	--	--	--	--	--

COMPOSITE ASSAYS																				
------------------	--	--	--	--	--	--	--	--	--	--	--	--	--	--	--	--	--	--	--	--

DRILL LOG

Scale: 1" = 20'

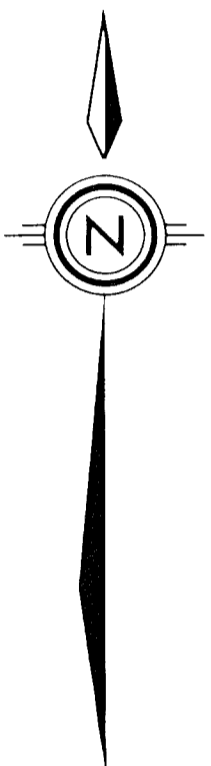
ELEV.	FOOTAGE	% REC.	FRACTURE DATA	GRAPHIC LOG	DESCRIPTION AND REMARKS	ALTERATION							SULFIDES			ASSAYS*				
						Bio	Ksp	Qtz	Ser	Arg	Chl	Epi	TOT SUL	DISS /VN	PY /CP	Cu	Mo	Au	Ag	
1390	1610	98	O 9 C 5 RQD: 55		1															
1370	1630	95	O 21 C 2 RQD: 36																	
1350	1650	92	O 14 C 4 RQD: 40		T/S															
1330	1670	92	O 11 C 0 RQD: 57																	
1310	1690	99	O 12 C 1 RQD: 52		1680: At this point, stockwork structures begin to be only poorly developed.															
		93																		
		89																		

INTERVAL: from _____ to _____

INTERVAL: from _____ to _____

COMPOSITE ASSAYS																				
------------------	--	--	--	--	--	--	--	--	--	--	--	--	--	--	--	--	--	--	--	--

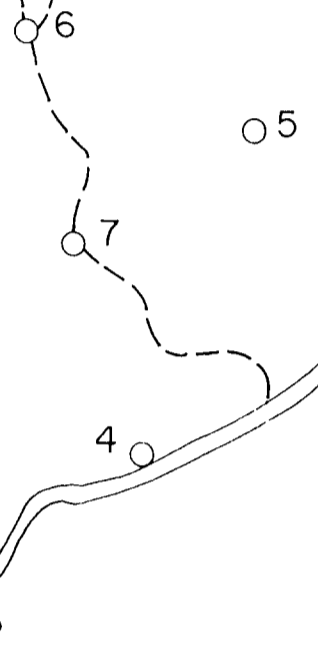
COMPOSITE ASSAYS																				
------------------	--	--	--	--	--	--	--	--	--	--	--	--	--	--	--	--	--	--	--	--



L C P
IRLY BIRD

⊕ PC-2

⊕ PC-1



MINERAL RESOURCES BRANCH
DIAMOND DRILL REPORT
8600
NO.

⊕ PC-1 Diamond Drill Hole
○ 1 Percussion Hole

PIONEER PROJECT
J M T SERVICES CORP.
FOR
THE SUPERIOR OIL CO.
DIAMOND DRILL PLAN

TO PRINCETON
←

