

Geochemical Assessment Report

on the

Norm 1 to Norm 4 Mineral Claims

Situated Nineteen Kilometres
North-northeast of Hope, B. C.

in the

New Westminster Mining Division

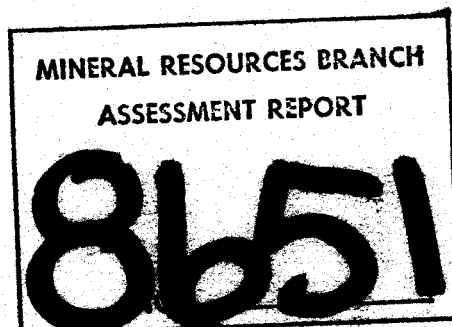
Latitude 49°32'N., Longitude 121°18'W. 92 H / 11 W

Field Work From July 29, 1980, to August 7, 1980.

by Carolin Mines Ltd.,

for Owners

GOLDEN SHAMROCK RESOURCES LTD.



Report by

R. Wolfe, P. Eng.,
December 8, 1980,
Delta, B. C.



Cochrane Consultants Limited
4882 Delta St., Delta, B.C. V4K 2T8 946-0221
Geotechnical Consulting / Exploration Services

geology
geophysics
geochemistry

TABLE OF CONTENTS

	Page
A. INTRODUCTION	1
B. CLAIMS INFORMATION	2
C. LOCATION AND ACCESS	3
D. GENERAL SETTING	4
E. LOCAL GEOLOGY AND MINERALIZATION.....	6
F. FIELD PROCEDURES	7
G. RESULTS OBTAINED	8

FIGURES

1. Location Map	Report body
2. Claims Map	" "
3. Geochemical Data	" "

APPENDICES

I	Assessment Work Details
II	Certificate

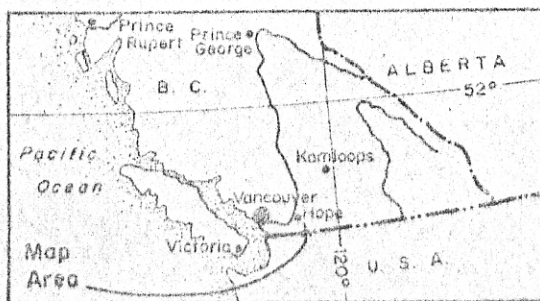
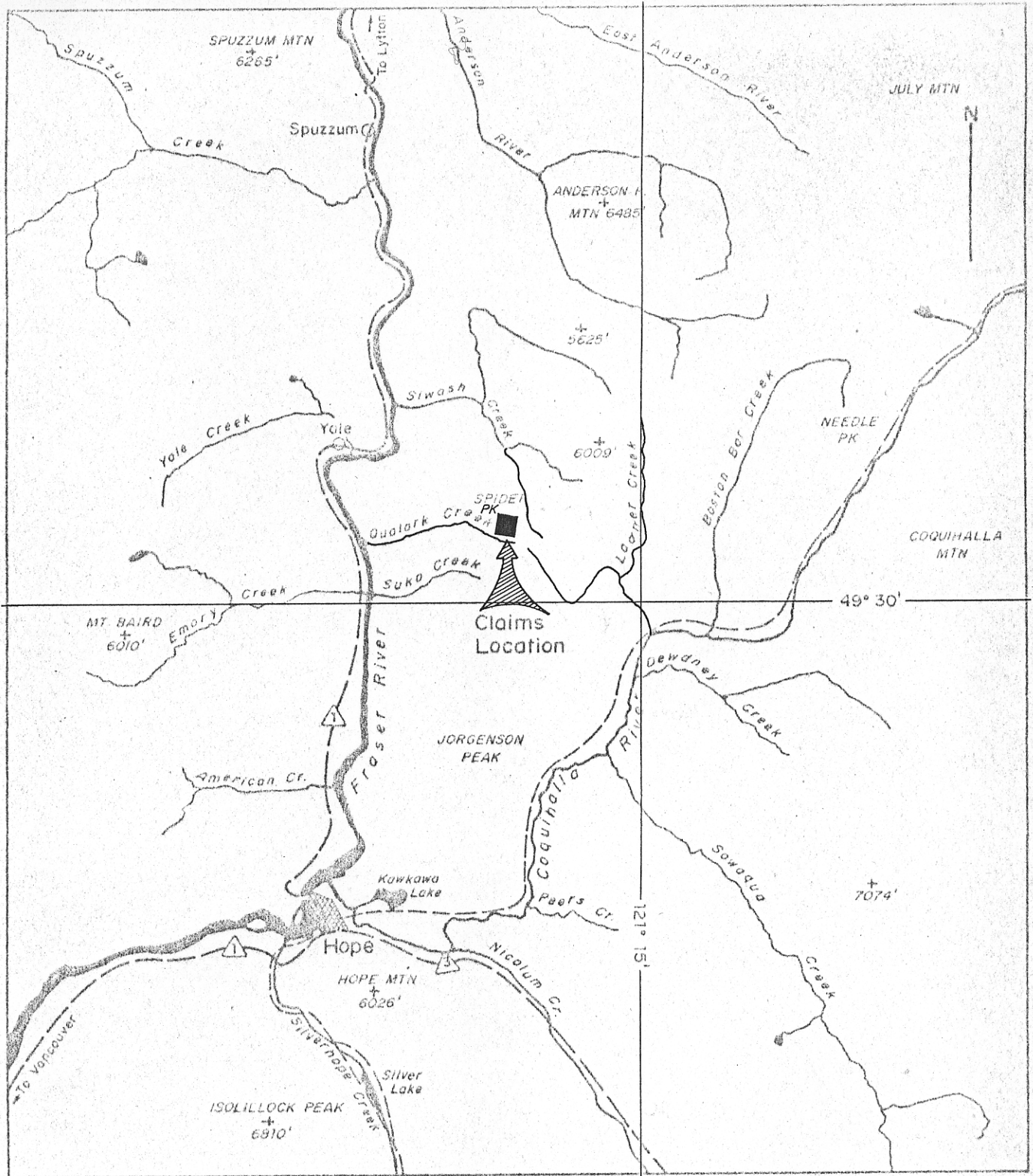


A. INTRODUCTION

Late in July and early in August, 1980 a two man soil sampling crew conducted work on the Norm 1 to Norm 4 mineral claims located 19 km north-northeast of Hope, B. C., on the southwest slope of Spider Peak near the headwaters of Qualark Creek. This survey is part of a larger project; the "Ladner Creek North Project" conducted during the summer and fall of 1980 by Carolin Mines Ltd., a part of continuing exploration work on the Coquihalla Gold Belt.

This report describes work done, and results obtained, and was prepared for assessment work submission. Assessment work details are set out in Appendix I at the end of this report.





LOCATION MAP

Fig. 1

NORM CLAIMS

Qualark Creek/Spider Peak Area
 New Westminster Mining Division, B. C.

Cochrane Consultants Limited
 4052 Maple Street - Delta B.C.

N.T.S. 92 H/11 west half

Scale 1:250,000

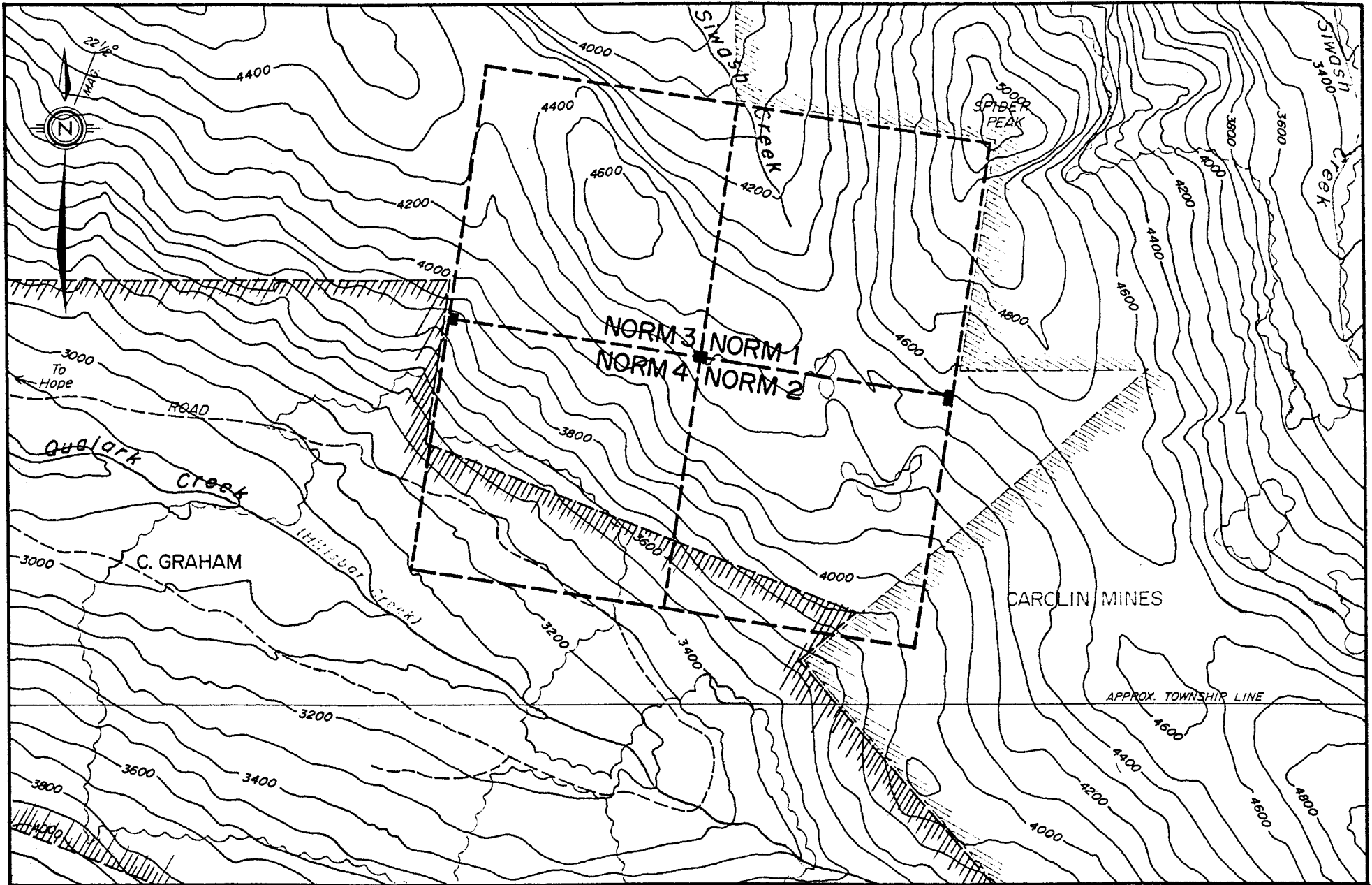
B. CLAIMS INFORMATION

The property consists of four (4) old two post mineral claims located in the New Westminster Mining Division and owned by Golden Shamrock Resources Ltd., 402-602 West Hastings Street, Vancouver, B. C. The following table lists pertinent claims information.

CLAIM NAME	RECORD NUMBER	ANNIVERSARY DATE	EXPIRY	
			Before Credits	After* Credits
Norm 1	29448	August 16	1980	1983
Norm 2	29449	August 16	1980	1983
Norm 3	29450	August 16	1980	1983
Norm 4	29451	August 16	1980	1983

* Includes credits applied for by this report.





Norm Claims

Qualark Creek / Spider Peak Area
 New Westminster Mining Division
 British Columbia

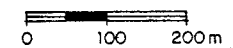
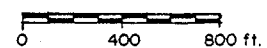
TOPO & CLAIMS MAP

Fig. 2

Map Area N.T.S. 92H/11W.
 Contour Interval 100 feet.

Cochrane Consultants Ltd. Aug/75. Dec/80.
 ~~~~~ Indicates logged off or clearing.

Scale: 1" = 800'



1:9600

C. LOCATION AND ACCESS

The Norm claims lie som 19 air km north-northeast of the town of Hope in Southern British Columbia. Access via logging roads is available from Hope, west on the Kawkawa Lake road, across the Coquihalla Bridge then left onto an access road which circles the west side of Kawkawa Lake. The road then proceeds northerly past Squeah on the C.N.R. line, over Suka Creek to Qualark (Hillsbar) Creek. The most easterly point on the Qualark Creek logging road is at an elevation of 3,200 feet (975 m). From there, a branch logging road, crosses Arsenic Creek at approximately 3,400 feet (1035 m) elevation. Access from this point is firstly by logging roads completed this summer to the west side of lines 148N., 152N., and 156N., thence by foot to the remainder of the claims area. Latitude is 49°32'N., Longitude 121°18'W. (See Figures 1 and 2)



D. GENERAL SETTING

The Norm claims lie in the northern most section of the Cascade Range, a rugged upland surface which locally, rises steeply from the Fraser Canyon to elevations in excess of 6,000 feet (1829 m) above sea level. The summit on Spider Peak is just over 5,200 feet (1585 m). The Norm claims lie in the divide between a fork of Siwash Creek (draining northerly) and the headwaters of Qualark Creek, (draining westerly). Both creeks are tributaries of the Fraser River. The area is well forested with Douglas Fir, Red and Yellow Cedar, Hemlock, Spruce and Pine.

The claims straddle a narrow basic intrusive/extrusive complex, with associated serpentine, talc, and carbonate-quartz-maraposite (?) rocks. To the east of this north trending complex is the Jurassic Ladner Group, (slate greywacke), and to the west, the Paleozoic Hozameen Group (volcanics, limestone, chert).





A series of gold occurrences lie along this belt, which is collectively known as the Coquihalla Gold Belt. The gold occurrences are of several varieties including quartz vein type, talc-fault gouge type, and replacement type deposits, such as the Carolin Mine situated some 4 air km southeast of the Norm claim.



E. LOCAL GEOLOGY AND MINERALIZATION

A description is reproduced below, with the kind permission of the authors, from "Geo-chemical and Geological Report on Norm 1-4 Mineral Claims" by J. H. Montgomery and D.R. Symonds dated September 30, 1976 (Assessment Report No. 6000):

"Three main rock types are evident: a black slate, an intermediate volcanic unit and an ultramafic unit (serpentine). Cleavage in the slates strike approximately north and dips steeply towards the east at 85 degrees. The intermediate volcanic unit is composed of a light coloured aphanite which has undergone considerable silicification, carbonatization and pyritization. The serpentine is a typical dark green serpentine with many subparallel slip planes."

"The contact between the slate and intermediate volcanic rock units is northerly, while the intrusive contact is northwesterly as shown in figure 3."

"Mineralization occurs only in the intermediate volcanic unit. It consists entirely of pyrite disseminated throughout the rock and of gold as indicated by the geo-chemical soil analyses. Silicification in the form of many small quartz stringers and some carbonatization has also occurred."



FIELD PROCEDURES

Using the "Ladner Creek North" main grid, and the Norm 1 and 2 final claim post as orientation, baseline 42 west was silva compassed and chained north from line 152 to line 172, then baseline 44 west to line 180. Cross lines were cut at 400 foot (122 m) intervals and samples collected at 100 foot (30 m) intervals over the four claims area.

All soil samples were collected, using hand tools, from the "B" soil horizon. Samples were placed in grid numbered kraft paper bags, air dried at the Qualark Creek camp, then boxed and shipped to Cochrane Consultants Ltd., of Delta, B. C. by four wheel drive truck, thence to Min-En Labs Ltd., of North Vancouver, B. C. by courier service.

The samples were analyzed for gold by aqua regia extraction and Atomic Adsorption technique and reported in parts per billion. Results were mailed to Cochrane Consultants' office, in Delta, B. C., and plotted, with the aid of field notes and maps, at a scale of 1:6000. (1"=500') (See Figure 3).

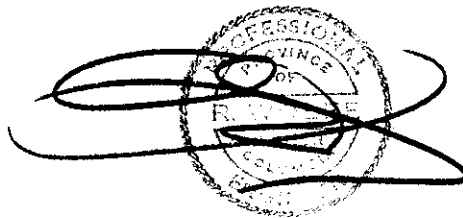


G. RESULTS OBTAINED

A total of 277 soil and rock samples were collected. The Au content ranged from a low of less than 5 p.p.b. to a high to 520 p.p.b. (line 156 N., 200 E.). All results are plotted on Figure 3.

An interesting trend can be observed just east and roughly parallel to the baseline. Data is presently insufficient to contour this trend which is marked by a dotted line on Figure 3. Detailed follow-up sampling and close prospecting is recommended to investigate possible Au occurrences in this area.

Respectfully submitted,

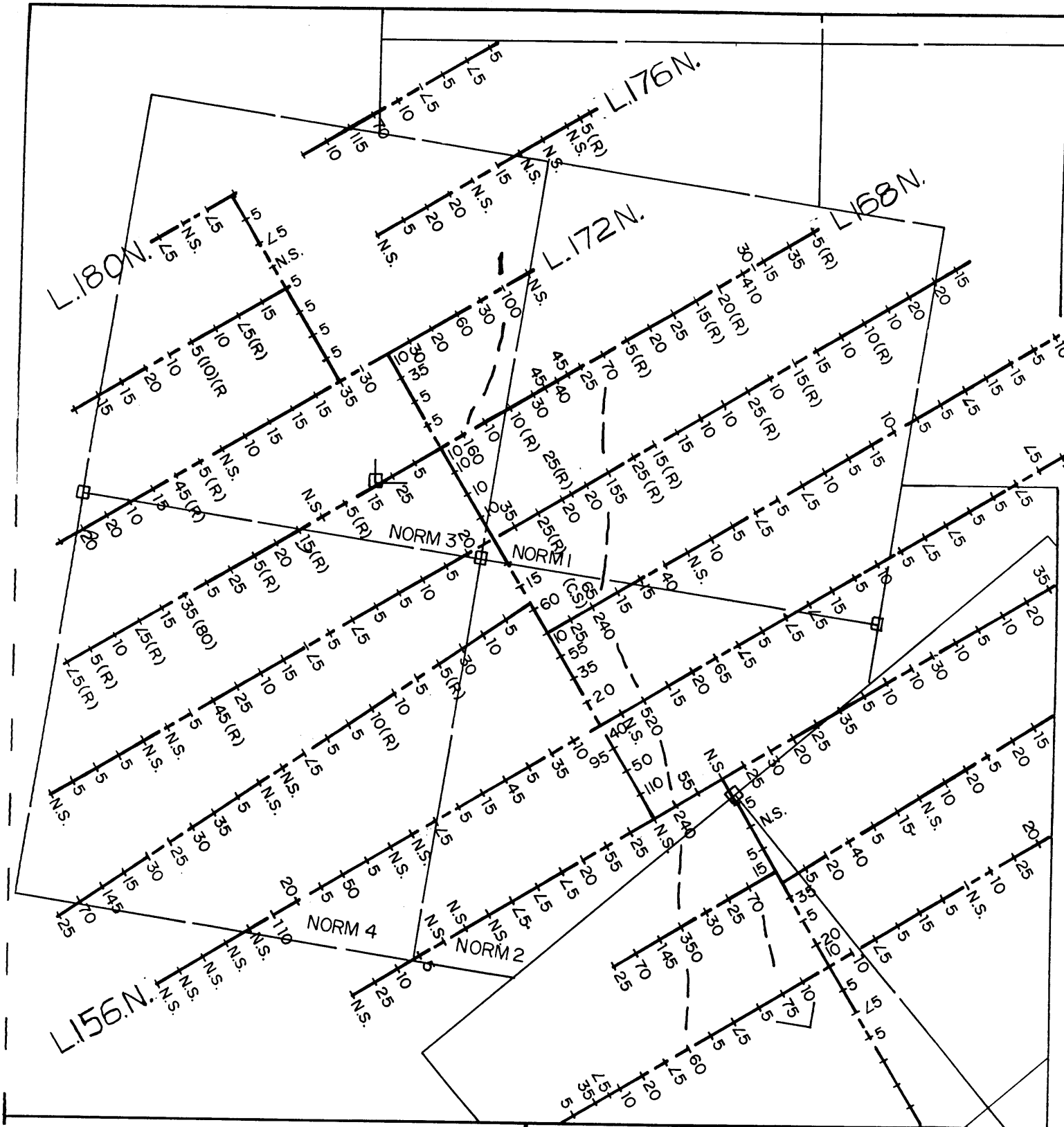


Robert Wolfe, P. Eng.,

December 8, 1980,

Delta, B. C.





Geochem. Data, Au, ppb



To accompany Report by R. Wolfe P.Eng.  
Dec. 8 1980



Norm Claims 92H 11/W

New Westminster M.D.

Fig. 3

APPENDIX I

ASSESSMENT WORK DETAILS

|                                                                                     |                                    |
|-------------------------------------------------------------------------------------|------------------------------------|
| Prospector/soil sampler,<br>July 29 to August 7, 1980,<br>6 days at \$120/day ..... | \$ 720.00                          |
| Helper,<br>July 29 to August 7, 1980,<br>6 days at \$100/day .....                  | 600.00                             |
| Camp rental, 8 days at \$10/day .....                                               | 80.00                              |
| R. Wolfe, P. Eng.,<br>1/2 day at \$300/day .....                                    | <del>300.00</del><br>150.00        |
| 4 x 4 vehicle, 6 days at \$27.50/day .....                                          | 165.00                             |
| Min-En Labs Ltd., Geochemical Analysis .....                                        | 1,212.50                           |
| Drafting, 32 hours at \$18.50/hour .....                                            | 592.00                             |
| Typing, 6 hours, at \$12/hour .....                                                 | 72.00                              |
| Reproduction, collating, binding .....                                              | 120.00                             |
| Total .....                                                                         | \$ <del>3,711.50</del><br>3,561.50 |

TEK.

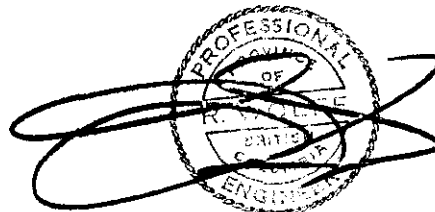


APPENDIX II

CERTIFICATE

I, Robert Wolfe, of the Municipality of Maple Ridge, British Columbia, do hereby certify that:

1. I am a consulting geological engineer with an office at 4882 Delta Street, Delta, B. C. V4K 2T8.
2. I am a graduate of the University of Alberta, (1963) with a degree in Geology and Physics (B.Sc.). I also took an extra year of Geology at the University of British Columbia, in 1963-64.
3. I have practiced my profession since 1964, while being employed by such companies as KennCo (Western) Exploration, Meridian Exploration Syndicate, (Canex Aerial Exploration Ltd., Noranda Mines Ltd., Home Oil Co.), Orequest Syndicate (Granby Mining Co., Home Oil Co., Homestake Silver Mines.). I have been in private independent practice since 1968.
4. I have no interest, either direct or indirect in the properties or securities of Golden Shamrock Resources Ltd., or Carolin Mines Ltd., nor do I expect to receive or acquire any such interest.
5. I have been a member in good standing of the Association of Professional Engineers of the province of British Columbia since 1967.



Robert Wolfe, P. Eng.,  
December 8, 1980,  
Delta, B. C.

