

**GEOCHEMISTRY REPORT**  
**ON THE**  
**YAK GROUP**  
**GRAHAM ISLAND, QUEEN CHARLOTTE ISLANDS, B.C.**  
**SKEENA MINING DIVISION**

**N.T.S. 103 F/9E**

**Latitude**  $53^{\circ} 31'$  to  $53^{\circ} 35'$   
 $132^{\circ} 10'$  to  $132^{\circ} 13'$

**for**

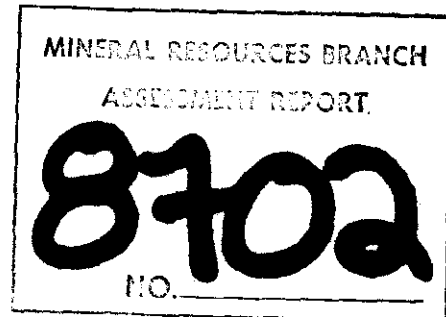
**Graham Island Mines Ltd.**

**401 - 595 Howe Street**

**Vancouver, B.C.**

**by**

**P.G. Curtis**



*Jan '81*

## TABLE OF CONTENTS

	<u>Page</u>
Summary	i
Introduction	1
Location	1
Access	1
Location Map	2
Topograph	3
Claim Group	3
Cost of Program	3
Geochemical Program	3
Results	4
Frequency Distribution Diagram	5-8
Discussion	9

### Appendices

- A Dept. of Mines Claim map 1:500
- B Assay Procedures and Assay Certificates
- C Statement of Authors Qualifications
- D Statement of Costs

### Maps attached to report

- 1 YAK 1 Gold - Mercury results 1:5000
- 2 YAK 1 Silver - Arsenic results 1:5000
- 3 YAK 2 Gold - Mercury results 1:5000
- 4 YAK 2 Silver - Arsenic results 1:5000
- 5 YAK 3 Gold - Mercury results 1:5000
- 6 YAK 3 Silver - Arsenic results 1:5000

## Summary

This report details the procedure work done and results to date of that portion of a recommended geochemical survey which was completed during the 1980 field season, for filing assessment work required to maintain the claims in good standing.

The results do not show any major anomalous areas but the probable dual populations of arsenic and mercury may echo the bedrock geology but the overburden is too deep over most of the claims to obtain any supporting evidence as yet.



**GEOCHEMISTRY REPORT  
ON THE  
YAK GROUP MINERAL CLAIMS  
GRAHAM ISLAND, QUEEN CHARLOTTE ISLANDS, B.C.  
SKEENA MINING DIVISION  
for  
Graham Island Mines Ltd.  
401 - 595 Howe Street  
Vancouver, B.C.  
by  
P.G. Curtis**

**Introduction**

This report was authorized by Graham Island Mines Ltd., which company has the option to purchase the subject mineral claims.

Its purpose is to report on the procedures, costs and results to date of the work completed during the 1980 field season. This work was part of a recommended program for the subject claims.

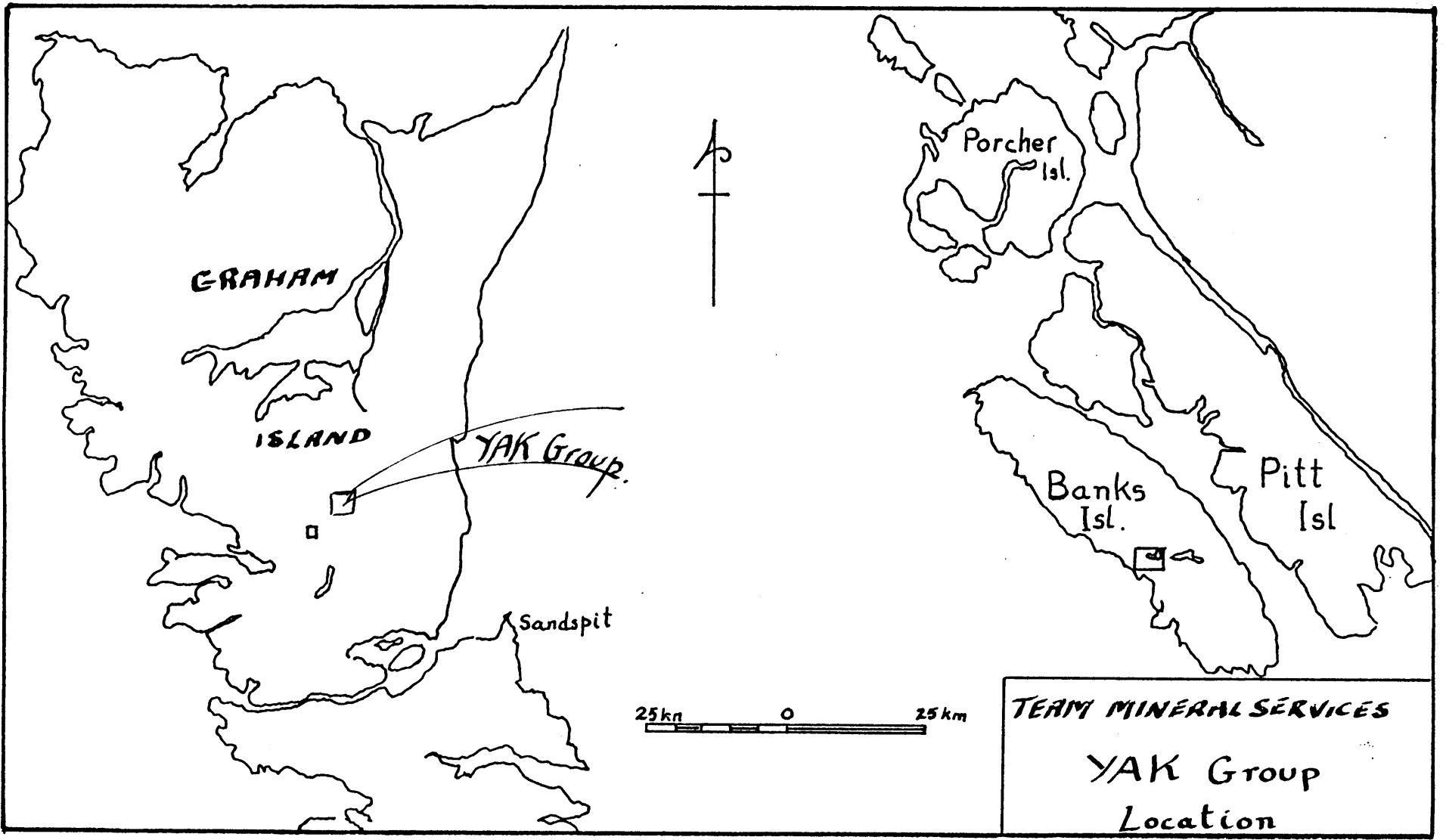
**Location**

The property is located in the north central part of Graham Island approximately 10 kilometres southeast of Juskatla and approximately 2 kilometres due east of the mineral zone currently being developed by Concinola Mines Ltd. (see location map).

**Access**

The southwestern part of the group is cut by a logging road established by MacMillan Bloedel Ltd. A logging road through the YAK 1, 2, and 3 claims is due to be constructed by MacMillan Bloedel in the near future.

The existing road provides access to the Easy claim but the Yak claims can only be reached on foot.



GRAHAM

ISLAND

YAK Group.

Sandspit

Porcher  
Isl.

Banks  
Isl.

Pitt  
Isl.

25 km 0 25 km

TEAM MINERAL SERVICES  
YAK Group  
Location

## Topography

The topography is generally of low relief from 0 to 60 metres above sea level. Drainage over most of the area is poor and much of the ground is waterlogged throughout the year. Low lying ground adjacent to the Yakoun river is frequently subjected to flooding.

Approximately half the group is covered by virgin timber.

## Claim Group

The group consists of the following claims:

<u>Claim Name</u>	<u>Units</u>	<u>Record No.</u>	<u>Expiry Date</u>
YAK 1	12	1894 (11)	
YAK 2	12	1895 (11)	
YAK 3	15	1896 (11)	
EASY	20	897 (1)	Jan 12, 1981
TASU	4	917 (1)	

Assessment work for 3 years was filed at the Vancouver office of the sub-recorder for the Skeena Mining Division on November 28, 1980.

## Cost of Program

The program was carried out under contract by Team Mineral Services Inc. a company owned and operated by R.R. Dion and by which company the author is employed.

The amount of assessable work performed on the YAK group was \$28,600 as detailed in Appendix "D" statement of costs.

## Geochemical Program

- 1) The west boundary of the YAK 1 and 2 claims was partially slashed out and a picket-line established for use as a base. On YAK 3 a line was flagged and

picketed due east from the 2N3W location post for use as a base line. Sample lines were run at right angles to these base lines as shown on the maps attached to this report.

### **Sampling**

The samples were collected with a 1 metre long auger. In approximately 75% of cases this was deep enough to obtain some kind of inorganic sample. The samples were put in standard "wet proof bags" marked with their location, partially dried in camp then shipped to Acme Analytical Labs Ltd.

### **Assaying**

Acme Analytical Labs Ltd. of Vancouver carried out geochemical analysis for gold, mercury, silver and arsenic. The analysis procedure and the assay certificates are enclosed in Appendix C.

### **Results**

#### Gold

The results and the frequency distribution graph indicate a threshold value of 15 ppb. 11 samples exceeded this value or approximately 1% of all samples collected.

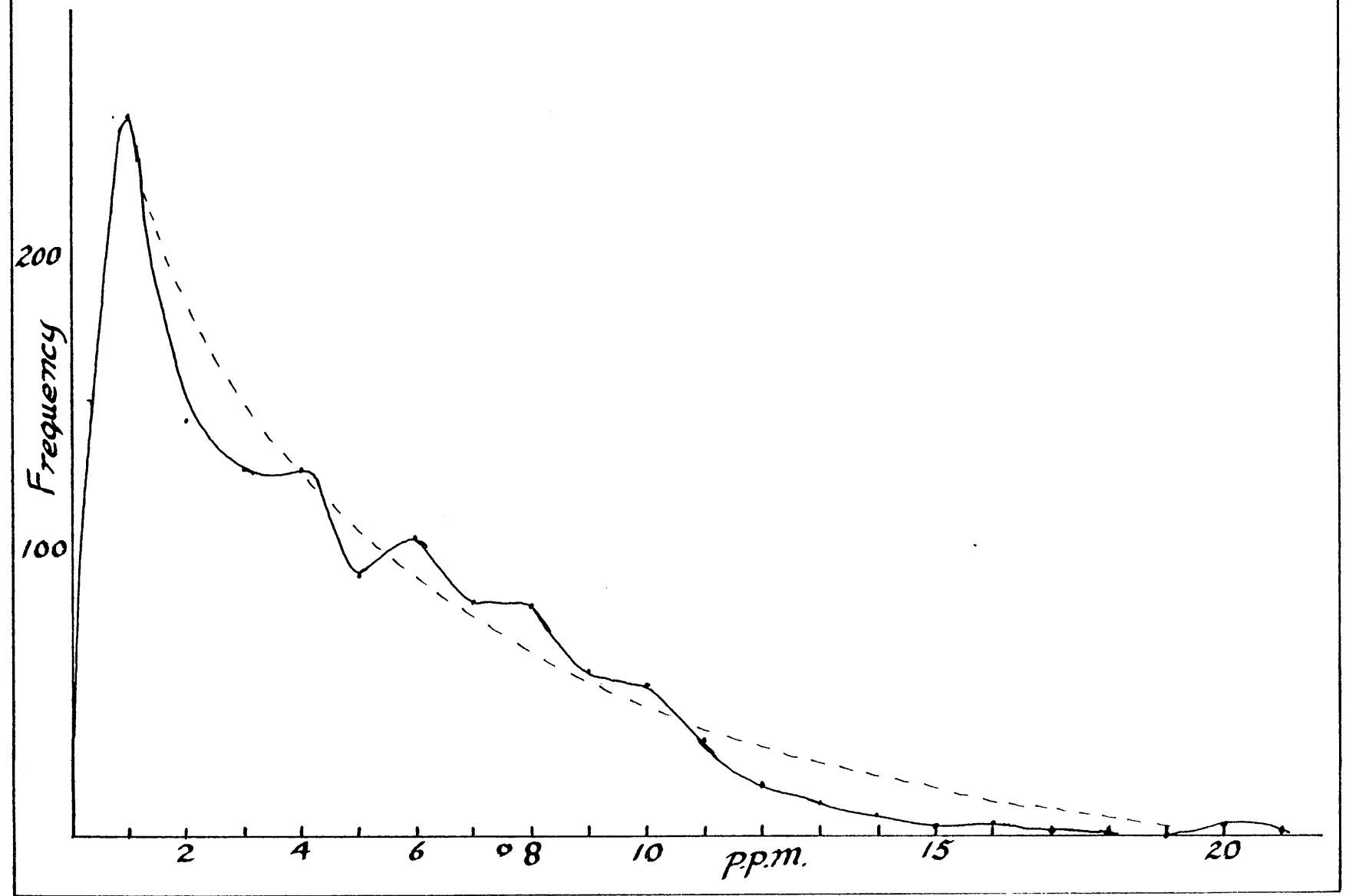
#### Silver

Threshold value has been taken at 0.5 ppm.

#### Mercury

Distribution graph appears to indicate two populations and an upper threshold of 320 ppb has been taken.

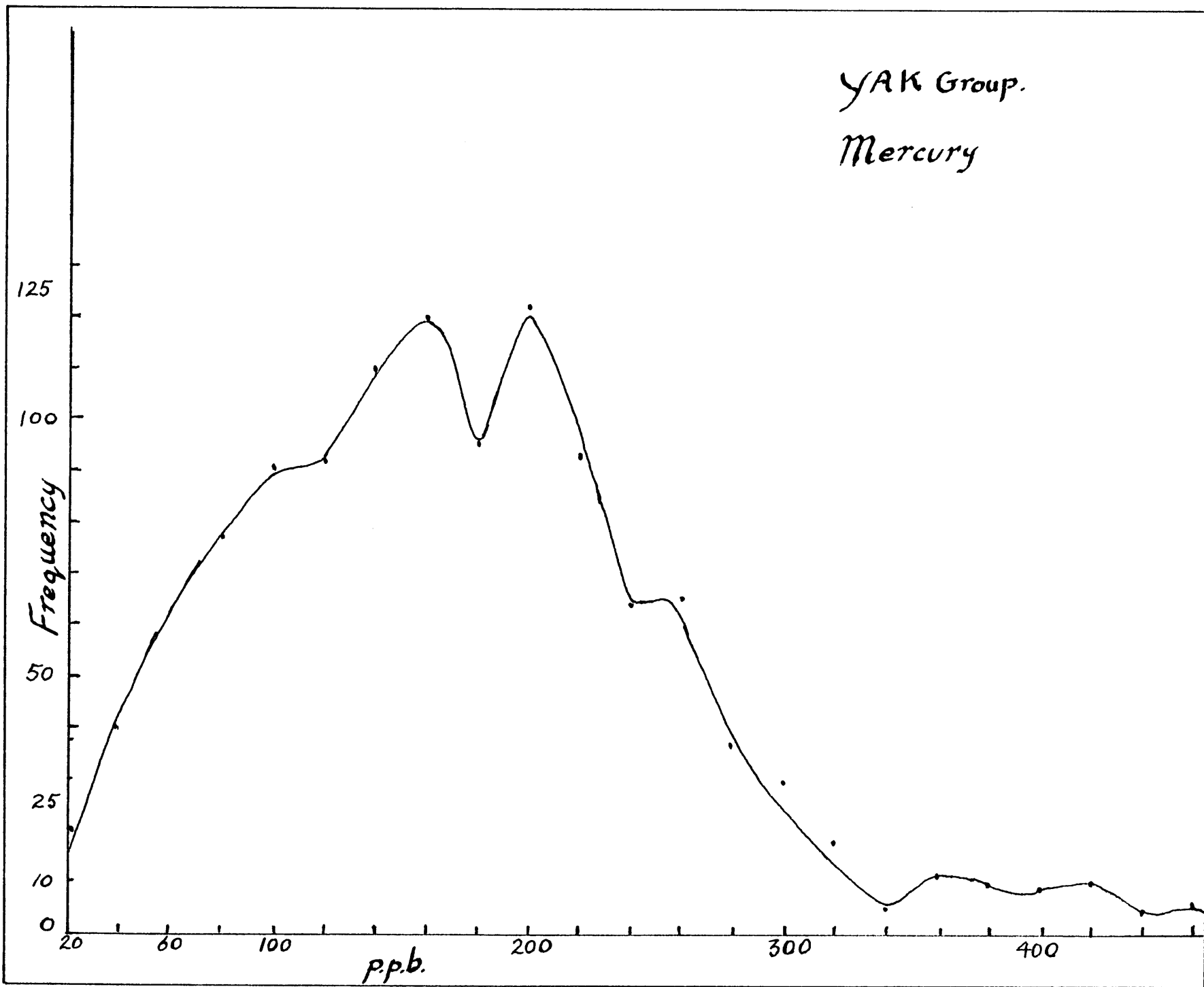
YAK Group  
Arsenic



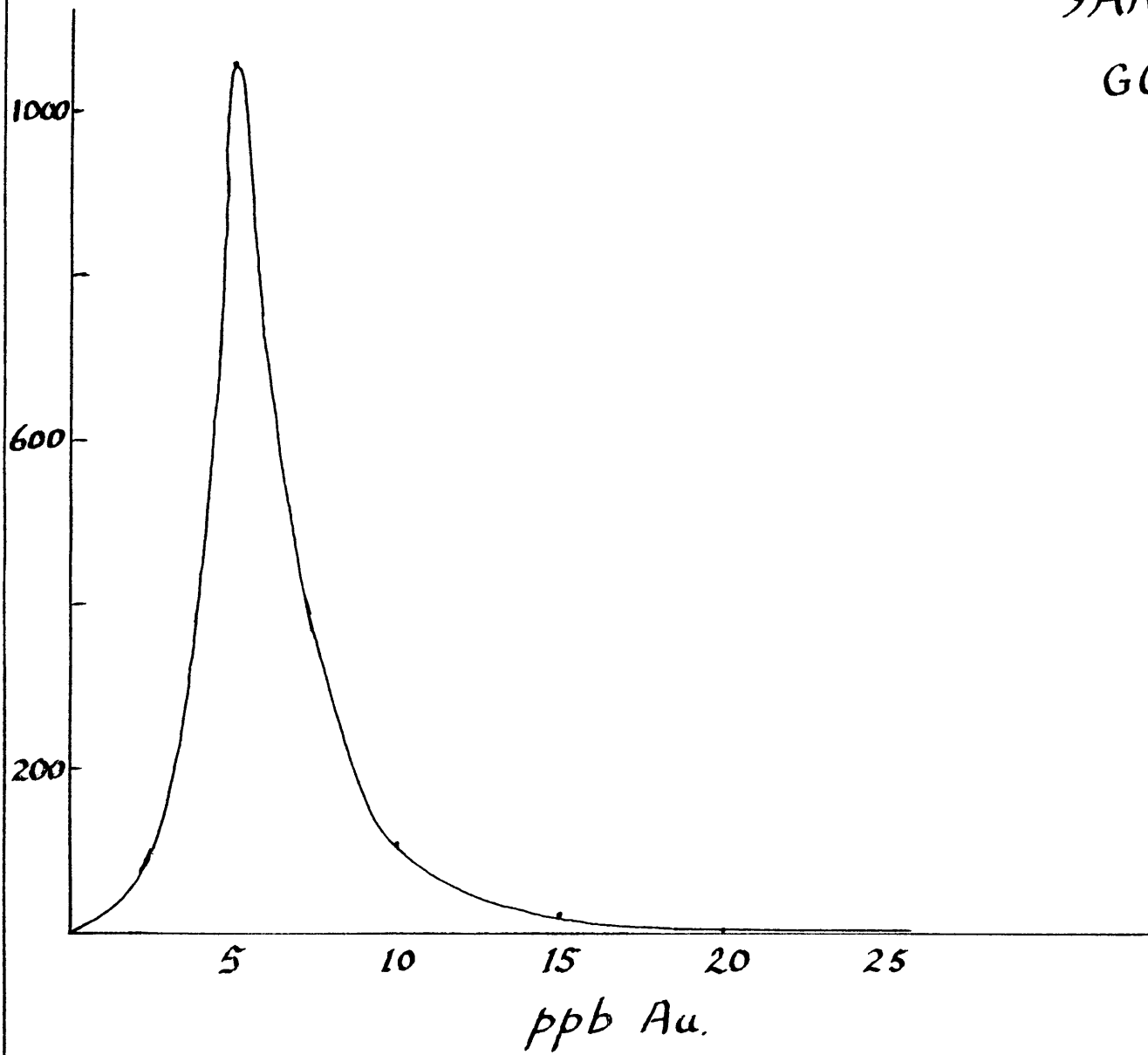


YAK Group.

Mercury

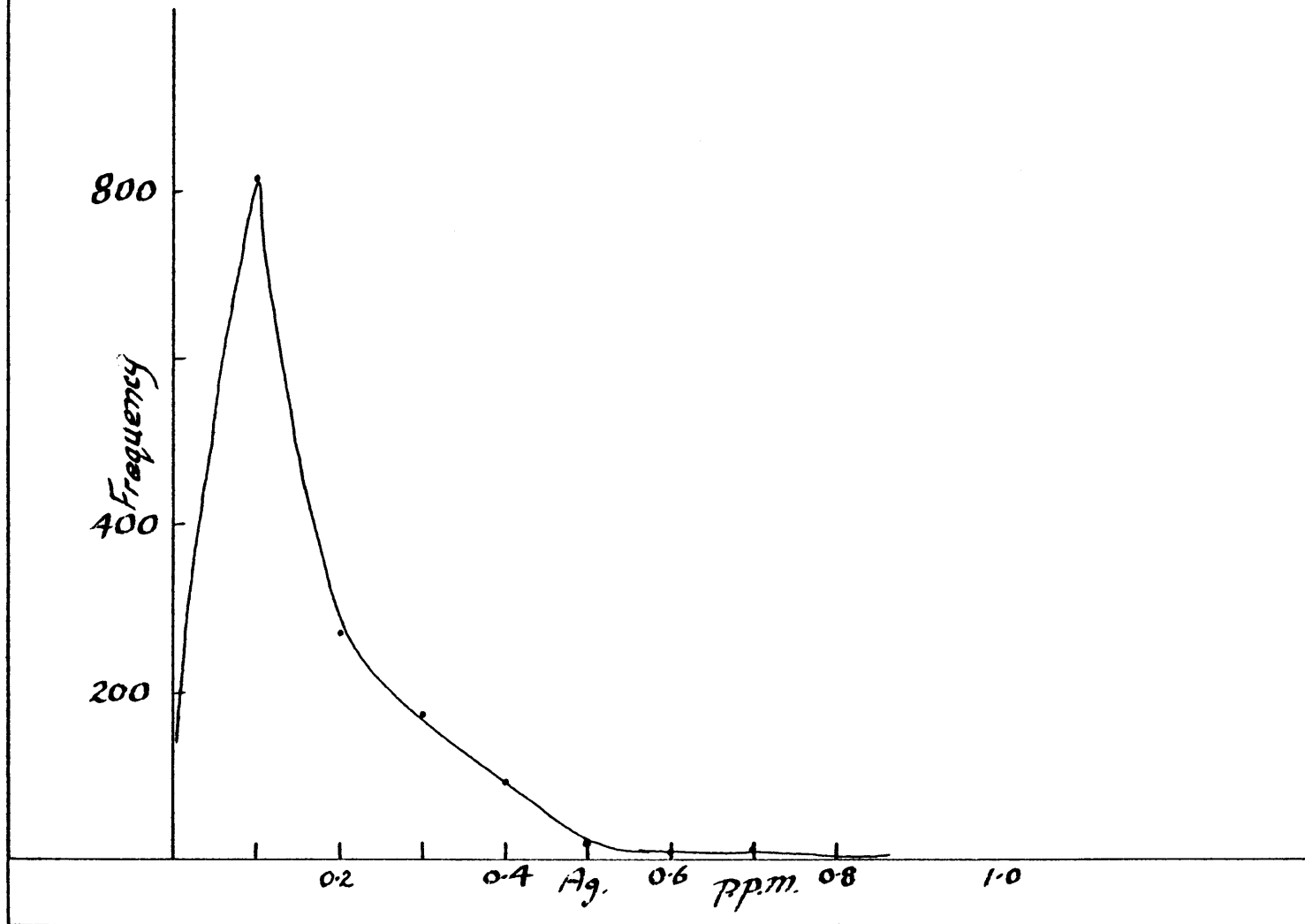


YAK Group  
GOLD.



YAK Group.

Silver



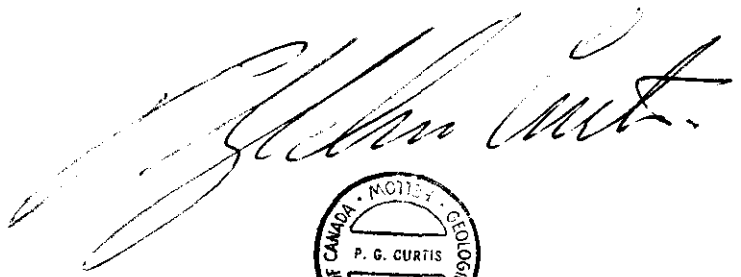

## Arsenic

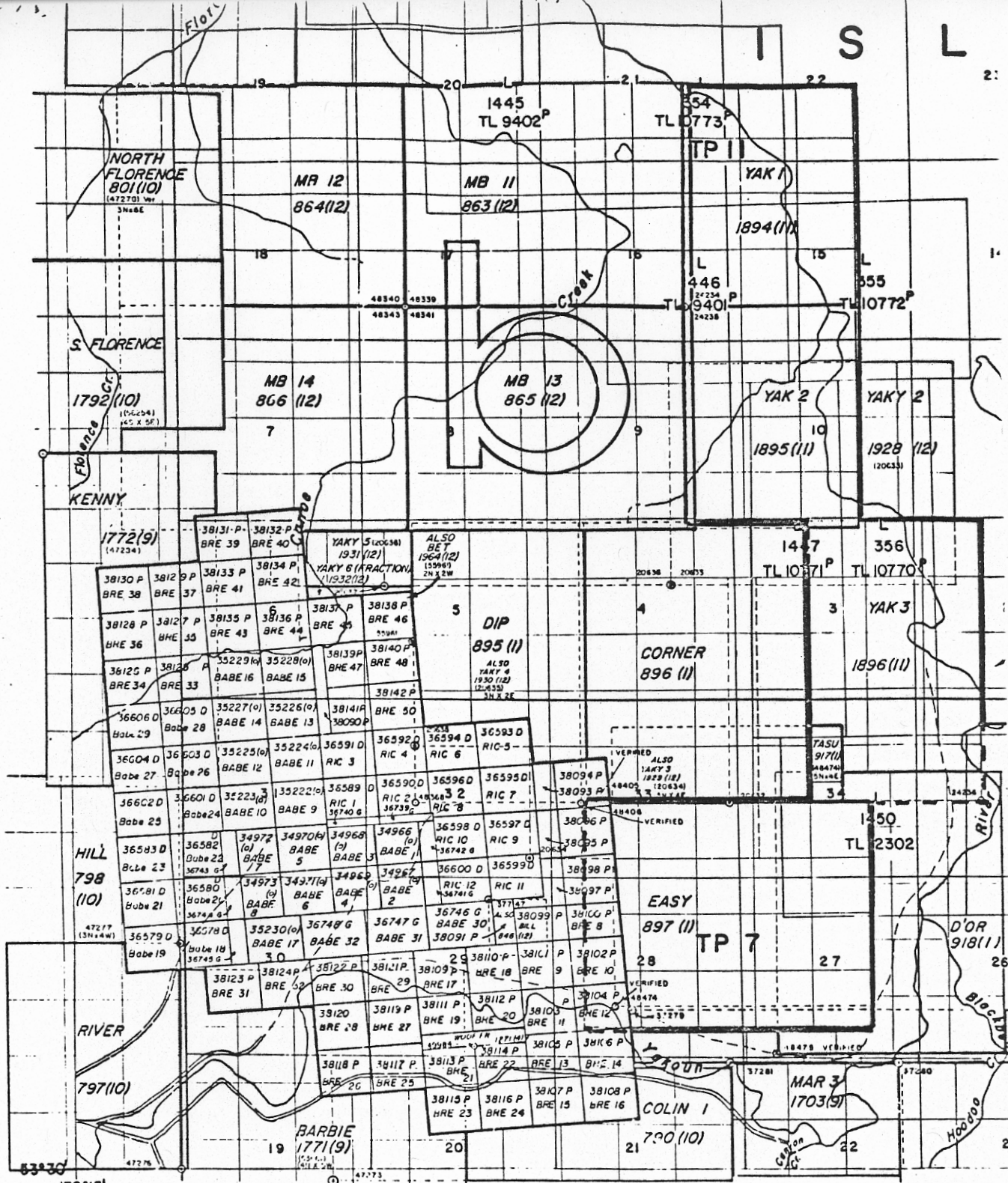
Two populations are also evident for this element and an upper threshold of 12 ppm has been taken.

## **Discussion**

Arsenic values in at least one instance appear to show a distinct separation of the two populations when viewed in plan in YAK 1 lines 7 south to 9 south show a distinct V configuration of higher values such as might be expected from the buried outcrop of either an incised flat lying sedimentary strata or a truncated plunging syncline. This phenomenon is faintly mirrored by the silver assays shown on the same map.

Gold and mercury results do not at first study show anything but random values.



Mining Division Boundary  
 Indian Reservation  
 Mineral and Placer Reserve  
 Ecological Reserve  
 Park Boundary  
 Recreation Area

--- Crown Granted  
 Reverted CG Mineral Claim  
 Forfeited Mineral Claim  
 Verified Legal Corner Post  
 Power Transmission Line  
 Pipeline

CG  
 Rev. CG  
 Ver.  
 PIPELINE

# MINERAL TITLES REFERENCE MAP 103F/9E

DEPARTMENT OF MINES AND PETROLEUM RESOURCES VICTORIA, B.C.

This map is prepared as a guide only to the location of mineral claims that have not been surveyed. Where the geographic position of a legal corner post has been verified it is indicated with the symbol, ver. Additional information with respect to the claims may be obtained at the Mining Division concerned.

Geochemical Analysis of Mo, Cu, Pb, Zn, Ag\*, Ni, Co,  
Mn, Bi\*, V, Fe, Cd\*, & Sb\*

Sample preparation

Soil samples are dried at 75°C and sieved to -80 mesh.

Rock samples are ground to -100 mesh.

Digestion

A .50 gram sample is digested with dilute aqua regia in boiling water bath and diluted to 10 mls with demineralized water.

Determination

All the above elements are determined by Atomic Absorption from the solution.

\* With background correction.

-As - By ICP *emission spectrometer.*  
Geochemical Analysis of Au

Digestion and extraction

A 10 gram sample which has been ignited over night at 600°C is digested hot with dilute aqua regia, and the clear solution is extracted with Methyl Isobuthyl Ketone.

Determination

Au is determined by AA from the MIBK extractant with background correction.

Geochemical Analysis of Ba

A .100 gram sample is digested hot with NaOH and EDTA solution. The solution is analysis for Ba by AA.

Geochemical Uranium Analysis

Digestion

A .50 gram sample is digested hot with nitric and perchloric acid and diluted to 10 mls.

Fusion

An aliquot is solvent extracted with salting agent and aliquot of is fused with NaF, K<sub>2</sub>CO<sub>3</sub>, & Na<sub>2</sub>CO<sub>3</sub> flux in platinum dish.

Determination

The fluorescence of the pellet is read in the Turner fluorometer.

### Geochemical Analysis of Hg

#### Digestion

A .50 gram sample is digested with nitric and perchloric acid and diluted with 20% HCl.

#### Determination

Hg is determined by cold vapour AA using F & J scientific Hg assembly. An aliquot is added to stannous chloride-hydrochloric acid solution. The reduced Hg is carried by bubbling air through the solution and passed into the Hg cell determined by AA.

#### Oxalic Acid Leach of Rock, Soil & Silt Samples

A .50 gram sample is digested hot with 10 mls 5% oxalic acid solution. The oxalic acid will dissolve Fe and Mn from their oxides of M - 1 fraction (but not from magnetite & ilmenite) limonites and clays. The following metals are analysed by atomic absorption: Cu, Zn, Pb, Ni, Mo, Fe, & Mn.

#### Cold HCl Acid Extraction

A .50 gram sample is leached at room temperature for 2 hours with occasional shaking with 10 mls 5% HCl solution. This will dissolve Cu from the organic and surface of clay fractions.

#### EDTA Extraction

A .50 gram sample is leached at room temperature for 4 hours with 10 mls of 2.5% EDTA solution.

COPE & ROCK ASSAYS SOIL, ROCK & WATER GEOCHEM ANALYSIS  
ACME ANALYTICAL LABORATORIES LTD.

MAIN LAB - 6455 LAUREL ST.  
BURNABY, B.C. V5B 3B4  
(604) 299-5242

ROSS RIVER - YUKON - (403) 969-2217

DEAN TOYE, B.Sc.  
CHIEF CHEMIST, CERTIFIED B.C. ASSAYER  
HOME PHONE 438-7872



To: Graham Island Mines,  
c/o 1274 - 56th St.,  
Delta, B.C.  
V4L 2A4

File No. 80-278

Type of Samples Soil

Disposition

**GEOCHEMICAL ASSAY CERTIFICATE**

YAK

1

SAMPLE No.		Ag	As	ppb Au	Hg								
OS	OE	.2	9	5	.230								1
OS	50E	.1	7	5	.140								2
													3
100S	OE	.1	4	5	.240								4
	50	.1	9	5	.080								5
	100	.1	10	5	.160								6
100S	150E	.1	10	5	.115								7
													8
400S	600E	.1	7	5	.100								9
													10
													11
													12
													13
													14
													15
													16
													17
													18
													19
													20
													21
													22
													23
													24
													25
													26
													27
													28
													29
													30
													31
													32
													33
													34
													35
													36
													37
													38
													39
													40

All reports are the confidential property of clients  
All results are in PPM.

DIGESTION:.....

DETERMINATION:.....

DATE SAMPLES RECEIVED May 22, 1980

DATE REPORTS MAILED Nov. 4, 1980

ASSAYER  
=====

DEAN TOYE, B.Sc.  
CHIEF CHEMIST  
CERTIFIED B.C. ASSAYER





To: Graham Island Mines Ltd.,

ACME ANALYTICAL LABORATORIES LTD.

Assaying & Trace Analysis

852 E. Hastings St., Vancouver, B. C. V6A 1R6

phone:253 - 3158

File No. 80-278

Type of Samples Soil

Disposition

### GEOCHEMICAL ASSAY CERTIFICATE

YAK

2

SAMPLE No.	Ag	As	ppb Au	Hg							
500S 0 E	.1	1	5	.210							1
50	.1	1	10	.235							2
100	.2	1	5	.180							3
150	.1	2	5	.250							4
200	.1	3	5	.170							5
250	.1	4	5	.200							6
300	.1	2	5	.050							7
350	.2	1	5	.150							8
400	.1	1	5	.220							9
450	.1	1	5	.190							10
500	.1	1	5	.130							11
550	.1	1	5	.090							12
600	.1	1	5	.185							13
650	.1	1	5	.185							14
700	.1	1	5	.270							15
750	.1	2	10	.205							16
800	.1	1	5	.140							17
850	.1	2	10	.180							18
900	.2	4	5	.150							19
950	.1	1	10	.215							20
500S 1000 E	.1	3	5	.260							21
											22
600S 0 E	.1	1	5	.200							23
50	.1	1	5	.245							24
100	.1	1	10	.150							25
150	.1	1	5	.270							26
200	.1	1	5	.315							27
250	.1	1	5	.070							28
300	.2	4	5	.120							29
350	.1	1	5	.150							30
400	.2	9	5	.220							31
450	.2	1	5	.020							32
500	.1	1	10	.260							33
550	.1	1	5	.140							34
600	.2	2	5	.270							35
600S 650 E	.1	1	5	.225							36
											37
											38
											39
											40

All reports are the confidential property of clients  
All results are in PPM.

DIGESTION:.....

DETERMINATION:.....

DATE SAMPLES RECEIVED May 22, 1980

DATE REPORTS MAILED Nov. 4, 1980

ASSAYER

DEAN TOYE, B.Sc.  
CHIEF CHEMIST  
CERTIFIED B.C. ASSAYER



To: Graham Island Mines Ltd.,

ACME ANALYTICAL LABORATORIES LTD.

Assaying & Trace Analysis

852 E. Hastings St., Vancouver, B. C. V6A 1R6

phone: 253-3158

File No. 80-278

Type of Samples Sol

Disposition \_\_\_\_\_

**GEOCHEMICAL ASSAY CERTIFICATE**

YAK

3

SAMPLE No.	Ag	As	ppb Au	Hg							
600S 700E	.1	2	5	.215							1
750	.1	1	5	.130							2
800	.1	1	5	.145							3
850	.1	1	5	.140							4
900	.1	3	5	.155							5
950	.1	1	5	.170							6
600S 1000E	.1	1	5	.220							7
											8
700S OE	.1	1	5	.180							9
50	.1	1	5	.175							10
100	.1	1	5	.200							11
150	.1	1	5	.190							12
200	.1	1	5	.160							13
250	.1	3	5	.080							14
300	.4	1	5	.470							15
400	.3	30	5	.260							16
450	.1	1	5	.230							17
500	.1	1	5	.280							18
550	.1	1	5	.280							19
600	.1	2	5	.220							20
650	.1	2	5	.150							21
700	.1	2	5	.140							22
750	.1	2	5	.140							23
800	.1	3	10	.160							24
850	.1	2	5	.220							25
900	.1	1	5	.205							26
950	.1	1	5	.230							27
1000	.2	2	5	.185							28
1050	.3	3	5	.170							29
1100	.1	9	5	.140							30
700S 1150E	.1	12	5	.100							31
700S 350E	.1	3	5	.270							32
800S OE	.3	1	10	.215							33
50	.1	7	5	.235							34
100	.1	7	5	.220							35
150	.1	8	5	.095							36
800S 200E	.1	4	5	.060							37
											38
											39
											40

All reports are the confidential property of clients  
All results are in PPM.

DIGESTION:.....

DETERMINATION:.....

DATE SAMPLES RECEIVED May 22, 1980

DATE REPORTS MAILED NOV. 4, 1980

ASSAYER \_\_\_\_\_

DEAN TOYE, B.Sc.  
CHIEF CHEMIST  
CERTIFIED B.C. ASSAYER



To: Graham Island Mines Ltd.,

ACME ANALYTICAL LABORATORIES LTD.

Assaying & Trace Analysis

852 E. Hastings St., Vancouver, B. C. V6A 1R6

phone: 253 - 3158

File No. 80-278

Type of Samples Soil

Disposition \_\_\_\_\_

**GEOCHEMICAL ASSAY CERTIFICATE**

YAK

4

SAMPLE No.	Ag	As	ppb Au	Hg								
800S 250E	.1	1	5	.230								1
300	.3	2	5	.305								2
350	.1	3	5	.360								3
400	.3	1	5	.370								4
450	.1	2	5	.215								5
500	.1	1	5	.230								6
550	.1	2	5	.250								7
600	.1	1	5	.130								8
650	.1	1	5	.145								9
700	.1	1	5	.280								10
750	.1	1	5	.240								11
800	.2	1	5	.270								12
850	.2	1	5	.265								13
900	.1	2	5	.210								14
950	.1	9	5	.170								15
1000	.1	10	5	.160								16
1050	.1	9	5	.120								17
800S 1100E	.1	6	5	.100								18
												19
												20
												21
												22
												23
												24
												25
												26
												27
												28
												29
												30
												31
												32
												33
												34
												35
												36
												37
												38
												39
												40

All reports are the confidential property of clients  
All results are in PPM.

DIGESTION:.....

DETERMINATION:.....

DATE SAMPLES RECEIVED May 22, 1980

DATE REPORTS MAILED Nov 4, 1980

ASSAYER  
=====

DEAN TOYE, B.Sc.  
CHIEF CHEMIST  
CERTIFIED B.C. ASSAYER



To: Graham Island Mines,

ACME ANALYTICAL LABORATORIES LTD.

Assaying & Trace Analysis

852 E. Hastings St., Vancouver, B. C. V6A 1R6

phone:253 - 3158

File No. 80-278

Type of Samples Soil

Disposition

GEOCHEMICAL ASSAY CERTIFICATE

5

Table with columns: SAMPLE No., Ag, As, ppb Au, Hg, and a numbered list of results (1-40).

All reports are the confidential property of clients
All results are in PPM.

DIGESTION:.....

DETERMINATION:.....

DATE SAMPLES RECEIVED May 22, 1980

DATE REPORTS MAILED Nov. 4, 1980

ASSAYER

DEAN TOYE, B.Sc.
CHIEF CHEMIST
CERTIFIED B.C. ASSAYER



To: Graham Island Mines ,

ACME ANALYTICAL LABORATORIES LTD.

Assaying & Trace Analysis

852 E. Hastings St., Vancouver, B. C. V6A 1R6

phone:253 - 3158

File No. 80-278

Type of Samples Soil

Disposition

GEOCHEMICAL ASSAY CERTIFICATE

YAK

Table with columns: SAMPLE No., Ag, As, ppb Au, Hg, and a numbered list (1-40) on the right. Rows include sample IDs like 1000S, 1000S, 1100S, and 1100S with their respective assay values.

All reports are the confidential property of clients
All results are in PPM.

DIGESTION:.....

DETERMINATION:.....

DATE SAMPLES RECEIVED May 22, 1980

DATE REPORTS MAILED Nov. 4, 1980

ASSAYER

DEAN TOYE, B.Sc.
CHIEF CHEMIST
CERTIFIED B.C. ASSAYER



To: Graham Island Mines,

ACME ANALYTICAL LABORATORIES LTD.

Assaying & Trace Analysis

852 E. Hastings St., Vancouver, B. C. V6A 1R6

phone:253 - 3158

File No. 80-278

Type of Samples Soil

Disposition

GEOCHEMICAL ASSAY CERTIFICATE

YAK

7

SAMPLE No.	Ag	As	ppb Au	Hg									
1200S OE	.1	7	5	.185									1
50	.1	7	5	.170									2
100	.1	9	10	.200									3
150	.2	8	5	.270									4
200	.1	5	5	.180									5
250	.1	9	5	.180									6
300	.1	8	5	.185									7
350	.2	10	5	.170									8
400	.3	9	5	.280									9
450	.3	12	10	.280									10
500	.1	10	5	.320									11
550	.1	7	5	.270									12
600	.2	6	5	.325									13
650	.2	2	10	.270									14
700	.1	1	5	.055									15
750	.1	1	5	.070									16
800	.3	3	5	.235									17
850	.1	5	10	.200									18
900	.1	3	5	.120									19
950	.1	1	10	.115									20
1000	.1	1	5	.305									21
1050	.1	3	5	.435									22
1100	.2	12	5	.345									23
1150	.1	9	5	.280									24
1200	.3	9	5	.265									25
1250	.1	10	5	.215									26
1200S 1300E	.1	9	10	.125									27
													28
1300S OE	.1	1	5	.150									29
0.5	.1	3	5	.225									30
1	.2	1	5	.275									31
1.5	.1	4	5	.130									32
2	.1	1	5	.270									33
1300S 2.5E	.1	1	5	.200									34
													35
													36
													37
													38
													39
													40

All reports are the confidential property of clients  
 All results are in PPM.  
 DIGESTION:.....  
 DETERMINATION:.....

DATE SAMPLES RECEIVED May 22, 1980  
 DATE REPORTS MAILED Nov 4, 1980  
 ASSAYER \_\_\_\_\_  
 DEAN TOYE, B.Sc.  
 CHIEF CHEMIST  
 CERTIFIED B.C. ASSAYER



To: Graham Island Mines,

ACME ANALYTICAL LABORATORIES LTD.

Assaying & Trace Analysis

852 E. Hastings St., Vancouver, B. C. V6A 1R6

phone: 253 - 3158

File No. 80-278

Type of Samples Soil

Disposition

**GEOCHEMICAL ASSAY CERTIFICATE**

YAK

8

SAMPLE No.	Ag	As	ppb Au	Hg							
1300S 3 E	.1	1	20	.110							1
3.5	.1	1	5	.110							2
4	.1	2	5	.090							3
4.5	.1	1	5	.075							4
5	.2	2	5	.280							5
6	.1	7	5	.130							6
6.5	.1	10	5	.170							7
7	.1	9	5	.125							8
7.5	.1	8	15	.160							9
8	.1	9	5	.215							10
8.5	.1	11	5	.145							11
9	.1	3	5	.200							12
9.5	.1	8	5	.170							13
10	.1	7	5	.205							14
10.5	.1	10	5	.135							15
11	.1	11	5	.140							16
11.5	.1	12	5	.160							17
12	.1	10	5	.165							18
1300S 12.5E	.2	9	20	.165							19
											20
1400S OE	.2	1	5	.175							21
50	.1	1	5	.030							22
100	.2	1	5	.190							23
150	.1	2	5	.155							24
200	.3	1	5	.220							25
250	.4	1	5	.225							26
300	.1	1	5	.170							27
350	.1	1	5	.200							28
400	.1	1	5	.120							29
450	.2	2	5	.180							30
500	.1	1	5	.200							31
550	.1	1	5	.315							32
600	.2	1	5	.410							33
650	.1	1	5	.320							34
1400S 700E	.1	7	5	.175							35
											36
											37
											38
											39
											40

All reports are the confidential property of clients  
All results are in PPM.

DIGESTION:.....

DETERMINATION:.....

DATE SAMPLES RECEIVED May 22, 1980

DATE REPORTS MAILED Nov 4, 1980

ASSAYER

DEAN TOYE, B.Sc.  
CHIEF CHEMIST  
CERTIFIED B.C. ASSAYER



To: Graham Island Mines Ltd.,

ACME ANALYTICAL LABORATORIES LTD.

Assaying & Trace Analysis

852 E. Hastings St., Vancouver, B. C. V6A 1R6

phone: 253 - 3158

File No. 80-278

Type of Samples Soil

Disposition

**GEOCHEMICAL ASSAY CERTIFICATE**

YAK

SAMPLE No.	Ag	As	ppb Au	Hg								
1400S 750E	.2	8	5	.240								1
800	.1	5	5	.250								2
850	.3	1	10	.430								3
900	.1	3	5	.160								4
950	.1	1	5	.150								5
1000	.1	1	5	.135								6
1050	.2	4	10	.210								7
1100	.2	3	10	.310								8
1150	.1	17	10	.335								9
1200	.1	15	10	.305								10
1250	.1	13	5	.230								11
1300	.1	8	5	.325								12
1400S 1350E	.1	11	5	.200								13
												14
												15
												16
1500S OE	.3	2	5	.380								17
50	.1	1	5	.370								18
100	.4	1	5	.240								19
150	.2	1	5	.220								20
200	.3	1	10	.265								21
250	.1	1	5	.165								22
300	.1	1	5	.155								23
350	.1	2	5	.305								24
400	.2	1	5	.280								25
450	.2	1	5	.320								26
500	.1	1	5	.170								27
550	.1	1	5	.150								28
600	.2	1	5	.325								29
650	.1	2	5	.215								30
700	.1	1	5	.430								31
750	.1	1	5	.350								32
800	.1	1	5	.260								33
850	.4	1	5	.205								34
900	.4	1	5	.280								35
950	.1	1	5	.200								36
1000	.1	1	5	.325								37
1500S 1050E	.1	2	5	.250								38
												39
												40

All reports are the confidential property of clients  
All results are in PPM.

DIGESTION:.....

DETERMINATION:.....

DATE SAMPLES RECEIVED May 22, 1980

DATE REPORTS MAILED Nov. 4, 1980

ASSAYER

DEAN TOYE, B.Sc.  
CHIEF CHEMIST  
CERTIFIED B.C. ASSAYER





To: Graham Island Mines Ltd.,

ACME ANALYTICAL LABORATORIES LTD.

Assaying & Trace Analysis

852 E. Hastings St., Vancouver, B. C. V6A 1R6

phone:253 - 3158

File No. 80-278

Type of Samples Soil

Disposition \_\_\_\_\_

**GEOCHEMICAL ASSAY CERTIFICATE**

YAK

SAMPLE No.		Ag	As	ppb Au	Hg							
1500S	1100E	.1	1	5	.110							1
	1150	.1	5	5	.295							2
	1200	.1	2	5	.205							3
	1250	.2	2	5	.505							4
	1300E	.1	5	5	.230							5
1500S	1350E	.1	8	5	.250							6
												7
												8
												9
1600S	OE	.3	1	30	.190							10
	50	.2	2	5	.305							11
	100	.1	1	5	.315							12
	150	.1	1	5	.320							13
	200	.2	1	5	.220							14
	250	.1	1	5	.285							15
	300	.1	1	10	.245							16
	350	.1	1	5	.415							17
	400	.1	1	5	.415							18
	450	.1	1	5	.255							19
	500	.1	1	5	.225							20
	550	.1	1	5	.205							21
	600	.1	1	5	.210							22
	650	.2	1	5	.420							23
	700	.1	2	5	.065							24
	750	.1	4	5	.195							25
	800	.1	1	5	.450							26
	850	.1	8	5	.120							27
	900	.1	1	5	.400							28
	950	.1	1	5	.315							29
	1000	.1	1	5	.465							30
	1050	.1	1	5	.180							31
	1100	.1	1	5	.175							32
	1150	.1	1	5	.270							33
	1200	.1	1	5	.215							34
	1250	.1	4	5	.290							35
1600S	1300E	.1	8	5	.190							36
												37
												38
												39
												40

All reports are the confidential property of clients  
All results are in PPM.

DIGESTION:.....

DETERMINATION:.....

DATE SAMPLES RECEIVED May 22, 1980

DATE REPORTS MAILED Nov. 4, 1980

ASSAYER

DEAN TOYE, B.Sc.  
CHIEF CHEMIST  
CERTIFIED B.C. ASSAYER



To: Graham Island Mines,

ACME ANALYTICAL LABORATORIES LTD.

Assaying & Trace Analysis

852 E. Hastings St., Vancouver, B. C. V6A 1R6

phone:253 - 3158

File No. 80-278

Type of Samples Soil

Disposition

**GEOCHEMICAL ASSAY CERTIFICATE**

YAK

11	SAMPLE No.	Ag	As	ppb Au	Hg							
1700S	OE	.1	1	5	.185							1
	50	.1	1	5	.150							2
	100	.1	2	5	.330							3
	150	.1	4	10	.230							4
	200	.1	3	10	.230							5
	250	.2	5	5	.190							6
	300	.1	12	5	.240							7
	350	.1	34	10	.140							8
	400	.1	23	5	.180							9
	450	.1	1	5	.050							10
	500	.1	4	10	.055							11
	550	.1	2	5	.060							12
	600	.1	5	10	.120							13
	650	.2	4	5	.100							14
	700	.1	4	5	.065							15
	750	.1	6	5	.070							16
	800	.1	4	5	.070							17
	850	.1	4	5	.040							18
	900	.1	1	5	.105							19
	950	.1	2	5	.150							20
	1000	.1	3	5	.265							21
	1050	.1	4	5	.210							22
	1100	.2	1	10	.220							23
	1150	.1	3	5	.220							24
	1200	.2	2	5	.200							25
	1250	.2	2	5	.180							26
1700S	1300E	.1	8	5	.145							27
												28
												29
												30
												31
												32
												33
												34
												35
												36
												37
												38
												39
												40

All reports are the confidential property of clients  
All results are in PPM.

DIGESTION:.....

DETERMINATION:.....

DATE SAMPLES RECEIVED May 22, 1980

DATE REPORTS MAILED Nov. 4, 1980

ASSAYER  
=====

DEAN TOYE, B.Sc.  
CHIEF CHEMIST  
CERTIFIED B.C. ASSAYER



To: Graham Island Mines,  
c/o 1274 - 56th St.,  
Delta, B.C.  
V4L 2A4

ACME ANALYTICAL LABORATORIES LTD.

Assaying & Trace Analysis

852 E. Hastings St., Vancouver, B. C. V6A 1R6

phone: 253 - 3158

File No. 80-1315  
Type of Samples Soil  
Disposition \_\_\_\_\_

**GEOCHEMICAL ASSAY CERTIFICATE**

YAK (1)

SAMPLE No.	Ag	As	Au	Hg						
100N 0 E	.1	3	.005	.205						1
50	.1	8	.005	.420						2
100	.1	1	.005	.175						3
200	.1	1	.005	.200						4
300	.2	3	.005	.370						5
350	.1	3	.005	.130						6
400	.1	3	.005	.155						7
450	.1	1	.010	.165						8
500	.1	5	.010	.275						9
550	.2	1	.005	.170						10
600	.1	3	.005	.165						11
650	.1	3	.005	.115						12
700	.1	1	.005	.185						13
800	.1	8	.005	.190						14
1000	.1	4	.005	.255						15
1050	.1	4	.005	.125						16
1100	.1	2	.005	.205						17
1150	.1	3	.015	.350						18
1200	.1	2	.010	.205						19
100N 1300 E	.1	4	.010	.240						20
200N 0 E	.1	11	.005	.260						22
50	.2	3	.005	.190						23
200	.1	2	.010	.200						24
250	.1	2	.005	.210						25
300	.1	2	.015	.170						26
400	.1	4	.010	.130						27
450	.1	5	.005	.150						28
550	.1	2	.005	.080						29
650	.1	6	.010	.100						30
700	.1	3	.010	.080						31
750	.1	3	.010	.185						32
900	.3	3	.005	.155						33
950	.1	3	.005	.240						34
1000	.1	2	.005	.265						35
1050	.1	1	.005	.140						36
1150	.1	3	.005	.150						37
1200	.1	2	.005	.170						38
1250	.1	3	.010	.220						39
200N 1300 E	.1	10	.010	.280						40

All reports are the confidential property of clients  
All results are in PPM.

DIGESTION:.....

DETERMINATION:.....

DATE SAMPLES RECEIVED Oct. 23, 1980

DATE REPORTS MAILED Nov. 17, 1980

ASSAYER \_\_\_\_\_

DEAN TOYE, B.Sc.  
CHIEF CHEMIST  
CERTIFIED B.C. ASSAYER



To: Graham Island Mines,

ACME ANALYTICAL LABORATORIES LTD.

Assaying & Trace Analysis

852 E. Hastings St., Vancouver, B. C. V6A 1R6

phone:253 - 3158

File No. 80-1315

Type of Samples Soil

Disposition \_\_\_\_\_

**GEOCHEMICAL ASSAY CERTIFICATE**

YAK (2)

2

SAMPLE No.	Ag	As	Au	Hg						
OS 0 E	.1	2	.005	.050						1
100	.1	4	.005	.270						2
150	.1	2	.005	.065						3
200	.2	6	.005	.135						4
250	.1	8	.005	.115						5
350	.1	2	.005	.040						6
400	.1	6	.005	.160						7
650	.1	1	.005	.100						8
700	.3	4	.005	.075						9
750	.2	6	.005	.150						10
800	.2	6	.005	.440						11
850	.1	6	.005	.210						12
900	.2	10	.005	.270						13
950	.1	3	.005	.100						14
1000	.2	6	.010	.220						15
1050	.1	2	.005	.280						16
1100	.1	3	.005	.100						17
1200	.2	3	.005	.190						18
1300	.1	4	.010	.210						19
1350	.1	13	.005	.190						20
1400	.1	8	.015	.230						21
1450	.3	1	.010	.205						22
1500	.2	14	.010	.220						23
1550	.3	16	.005	.230						24
OS 1600 E	.1	10	.005	.140						25
100S 0 E	.2	8	.005	.280						26
50	.1	1	.005	.185						27
100	.1	4	.005	.090						28
150	.1	3	.005	.090						29
200	.1	3	.005	.090						30
250	.1	14	.005	.090						31
300	.1	4	.005	.135						32
350	.1	8	.005	.135						33
450	.1	3	.005	.180						34
550	.1	3	.010	.230						35
600	.1	3	.005	.100						36
100S 650 E	.1	6	.005	.210						37
	.2	8	.005	.190						38
										39
										40

All reports are the confidential property of clients  
All results are in PPM.

DIGESTION:.....

DETERMINATION:.....

DATE SAMPLES RECEIVED Oct. 23, 1980

DATE REPORTS MAILED Nov. 17, 1980

ASSAYER \_\_\_\_\_

DEAN TOYE, B.Sc.  
CHIEF CHEMIST  
CERTIFIED B.C. ASSAYER



To: **Graham Island Mines,**

**ACME ANALYTICAL LABORATORIES LTD.**

Assaying & Trace Analysis

852 E. Hastings St., Vancouver, B. C. V6A 1R6

phone: 253 - 3158

File No. 80-1315

Type of Samples Soil

Disposition \_\_\_\_\_

**GEOCHEMICAL ASSAY CERTIFICATE**

SAMPLE No.	Ag	As	Au	Hg						
3										
100S	700 E	.1	5	.005	.180					1
	750	.4	20	.005	.380					2
	800	.2	5	.005	.320					3
	850	.2	7	.005	.220					4
	900	.1	2	.005	.110					5
	950	.2	1	.005	.230					6
	1050	.3	13	.005	.190					7
	1200	.1	2	.005	.200					8
	1250	.1	3	.005	.190					9
	1300	.3	11	.010	.460					10
	1350	.1	12	.010	.300					11
	1400	.2	12	.005	.360					12
	1450	.1	9	.005	.240					13
100S	1500 E	.1	10	.005	.260					14
										15
200S	0 E	.2	4	.005	.220					16
	100	.4	4	.005	.170					17
	200	.2	8	.005	.330					18
	300	.1	8	.005	.110					19
	350	.2	4	.005	.090					20
	400	.2	6	.015	.250					21
	450	.1	4	.005	.185					22
	500	.2	5	.005	.280					23
	550	.1	5	.005	.160					24
	700	.1	4	.005	.130					25
	750	.2	7	.005	.380					26
	800	.1	5	.005	.230					27
	850	.1	6	.005	.280					28
	900	.2	5	.005	.500					29
	950	.2	6	.005	.360					30
	1000	.2	9	.005	.210					31
	1050	.2	8	.005	.160					32
	1150	.1	3	.005	.080					33
	1350	.1	7	.005	.270					34
	1400	.1	11	.005	.315					35
	1450	.4	12	.005	.475					36
	1500	.2	11	.005	.300					37
200S	1550 E	.2	12	.005	.335					38
										39
										40

All reports are the confidential property of clients  
All results are in PPM.

DIGESTION:.....

DETERMINATION:.....

DATE SAMPLES RECEIVED Oct. 23, 1980

DATE REPORTS MAILED Nov. 17, 1980

ASSAYER \_\_\_\_\_

**DEAN TOYE, B.Sc.**  
CHIEF CHEMIST  
CERTIFIED B.C. ASSAYER



To: Graham Island Mines,

ACME ANALYTICAL LABORATORIES LTD.

Assaying & Trace Analysis

852 E. Hastings St., Vancouver, B. C. V6A 1R6

phone:253 - 3158

File No. 80-1315

Type of Samples Soil

GEOCHEMICAL ASSAY CERTIFICATE

Disposition

YAK 2

4

SAMPLE No.	Ag	As	Au	Hg						
300S 0 E	.1	1	.005	.125						1
50	.3	9	.005	.235						2
100	.2	2	.005	.225						3
150	.2	4	.005	.320						4
250	.1	1	.005	.080						5
300	.3	2	.005	.240						6
350	.1	2	.005	.195						7
400	.1	5	.005	.140						8
450	.1	1	.005	.120						9
500	.1	6	.010	.115						10
550	.1	2	.005	.115						11
600	.2	2	.005	.230						12
650	.1	3	.005	.200						13
700	.1	3	.005	.390						14
750	.1	5	.005	.215						15
800	.1	7	.005	.245						16
850	.1	3	.010	.170						17
900	.1	5	.005	.270						18
950	.2	8	.005	.300						19
1000	.1	3	.005	.210						20
1050	.1	3	.005	.165						21
1150	.1	2	.005	.200						22
1200	.3	10	.005	.270						23
1250	.1	2	.005	.380						24
1300	.1	3	.005	.225						25
1350	.1	6	.005	.330						26
1400	.1	10	.010	.195						27
1450	.2	9	.005	.230						28
1500	.1	7	.010	.315						29
1600	.2	10	.010	.200						30
300S 1650 E	.1	6	.005	.675						31
400S 0 E	.2	3	.010	.665						32
50	.2	6	.170	.700						33
100	.4	6	.005	.615						34
200	.1	3	.005	.435						35
300	.2	6	.010	.370						36
400S 450 E	.1	2	.005	.170						37
										38
										39
										40

All reports are the confidential property of clients  
All results are in PPM.

DIGESTION:.....

DETERMINATION:.....

DATE SAMPLES RECEIVED Oct. 23, 1980

DATE REPORTS MAILED Nov. 17, 1980

ASSAYER

DEAN TOYE, B.Sc.  
CHIEF CHEMIST  
CERTIFIED B.C. ASSAYER



To: Graham Island Mines,

ACME ANALYTICAL LABORATORIES LTD.

Assaying & Trace Analysis

852 E. Hastings St., Vancouver, B. C. V6A 1R6

phone: 253 - 3158

File No. 80-1315

Type of Samples Soil

Disposition \_\_\_\_\_

**GEOCHEMICAL ASSAY CERTIFICATE**

YAK 2

5

SAMPLE No.		Ag	As	Au	Hg						
400S	500 E	.1	2	.005	.110						1
	600	.2	2	.005	.235						2
	650	.1	2	.005	.140						3
	700	.1	8	.005	.310						4
	750	.3	8	.005	.260						5
	800	.1	6	.005	.220						6
	850	.3	9	.005	.245						7
	900	.1	9	.005	.260						8
	950	.3	9	.005	.120						9
	1100	.1	2	.005	.190						10
	1150	.4	10	.005	.200						11
	1200	.2	11	.005	.220						12
	1250	.1	13	.005	.210						13
	1300	.2	9	.005	.270						14
	1350	.2	11	.005	.150						15
	1400	.1	7	.005	.230						16
	1450	.2	10	.005	.200						17
	1500	.1	9	.005	.180						18
	1550	.1	10	.005	.140						19
400S	1600 E	.1	9	.005	.210						20
											21
500S	0 E	.3	7	.005	.170						22
	50	.1	4	.005	.205						23
	100	.2	1	.005	.170						24
	150	.1	6	.005	.100						25
	200	.4	4	.005	.100						26
	350	.1	3	.005	.170						27
	400	.1	1	.005	.080						28
	450	.1	6	.005	.150						29
	550	.1	8	.005	.120						30
	600	.2	5	.005	.100						31
	650	.3	7	.005	.200						32
	700	.2	10	.005	.250						33
	750	.3	8	.005	.160						34
	800	.2	7	.005	.240						35
	850	.2	8	.005	.180						36
	900	.1	4	.005	.260						37
500S	950 E	.1	5	.005	.225						38
											39
											40

All reports are the confidential property of clients  
All results are in PPM.

DIGESTION:.....

DETERMINATION:.....

DATE SAMPLES RECEIVED Oct. 23, 1980

DATE REPORTS MAILED Nov. 17, 1980

ASSAYER \_\_\_\_\_

DEAN TOYE, B.Sc.  
CHIEF CHEMIST  
CERTIFIED B.C. ASSAYER



To: Graham Island Mines,

ACME ANALYTICAL LABORATORIES LTD.

Assaying & Trace Analysis

852 E. Hastings St., Vancouver, B. C. V6A 1R6

phone:253 - 3158

File No. 80-1315

Type of Samples Soil

### GEOCHEMICAL ASSAY CERTIFICATE

Disposition \_\_\_\_\_

6

SAMPLE No.	Ag	As	Au	Hg						
500S 1000 E	.2	4	.010	.260						1
1050	.1	3	.005	.250						2
1150	.2	3	.015	.715						3
1200	.1	2	.005	.410						4
1250	.2	7	.005	.625						5
1400	.2	8	.005	.435						6
1450	.2	8	.005	.355						7
500S 1500 E	.1	9	.005	.290						8
										9
600S 0 E	.1	7	.005	.270						10
50	.2	4	.005	.520						11
100	.2	2	.005	.620						12
150	.1	5	.005	.245						13
200	.1	2	.005	.150						14
250	.1	1	.005	.145						15
300	.1	1	.005	.080						16
350	.1	7	.005	.080						17
400	.3	4	.005	.130						18
450	.1	2	.005	.215						19
500	.1	4	.005	.165						20
550	.1	3	.005	.135						21
600	.2	5	.005	.160						22
650	.1	10	.005	.240						23
700	.2	4	.005	.105						24
750	.2	4	.005	.090						25
800	.1	3	.005	.160						26
850	.2	6	.015	.130						27
900	.3	6	.010	.165						28
950	.2	6	.005	.095						29
1000	.1	7	.005	.190						30
1050	.1	1	.005	.060						31
1100	.1	2	.005	.020						32
1150	.1	4	.005	.055						33
1250	.1	4	.005	.110						34
1300	.1	9	.005	.255						35
1350	.2	8	.005	.155						36
1450	.2	11	.005	.415						37
600S 1500 E	.1	7	.005	.280						38
										39
										40

All reports are the confidential property of clients  
All results are in PPM.

DIGESTION:.....

DETERMINATION:.....

DATE SAMPLES RECEIVED Oct. 23, 1980

DATE REPORTS MAILED Nov. 17, 1980

ASSAYER  
\_\_\_\_\_

DEAN TOYE, B.Sc.  
CHIEF CHEMIST  
CERTIFIED B.C. ASSAYER





To: Graham Island Mines,

ACME ANALYTICAL LABORATORIES LTD.

Assaying & Trace Analysis

852 E. Hastings St., Vancouver, B. C. V6A 1R6

phone: 253 - 3158

File No. 80-1315

Type of Samples Soil

Disposition \_\_\_\_\_

**GEOCHEMICAL ASSAY CERTIFICATE**

YAK 2

SAMPLE No.	Ag	As	Au	Hg						
600S 1550 E	.2	15	.005	.250						1
600S 1600 E	.1	10	.010	.220						2
										3
700S 0 E	.1	6	.005	.210						4
50	.2	14	.005	.080						5
100	.4	13	.005	.110						6
150	.2	3	.005	.160						7
200	.3	9	.005	.210						8
250	.3	14	.005	.370						9
300	.1	1	.005	.130						10
350	.1	1	.005	.130						11
400	.4	11	.005	.270						12
450	.1	5	.005	.270						13
500	.1	3	.005	.130						14
550	.1	6	.005	.190						15
600	.1	8	.005	.140						16
650	.1	1	.005	.105						17
700	.2	9	.005	.190						18
750	.1	4	.005	.190						19
800	.2	4	.005	.170						20
850	.2	9	.010	.135						21
950	.5	47	.005	.125						22
1000	.2	8	.005	.070						23
700S 1050 E	.2	11	.005	.190						24
										25
800S 50 E	.1	1	.005	.120						26
100	.2	3	.005	.080						27
150	.5	14	.005	.250						28
200	.3	9	.005	.190						29
250	.2	5	.005	.130						30
300	.1	2	.005	.080						31
350	.1	4	.005	.160						32
400	.5	11	.005	.130						33
450	.2	7	.005	.110						34
500	.1	5	.005	.110						35
550	.2	8	.005	.290						36
600	.2	6	.005	.160						37
800S 650 E	.1	2	.005	.095						38
										39
										40

All reports are the confidential property of clients  
All results are in PPM.

DIGESTION:.....

DETERMINATION:.....

DATE SAMPLES RECEIVED Oct. 23, 1980

DATE REPORTS MAILED Nov. 17, 1980

ASSAYER  
=====

DEAN TOYE, B.Sc.  
CHIEF CHEMIST  
CERTIFIED B.C. ASSAYER



To: Graham Island Mines,

ACME ANALYTICAL LABORATORIES LTD.

Assaying & Trace Analysis

852 E. Hastings St., Vancouver, B. C. V6A 1R6

phone: 253 - 3158

File No. 80-1315

Type of Samples Soil

Disposition \_\_\_\_\_

**GEOCHEMICAL ASSAY CERTIFICATE**

YAK 2

8

SAMPLE No.	Ag	As	Au	Hg						
800S 700E	.2	3	.010	.130						1
750	.1	2	.005	.045						2
800	.2	4	.005	.065						3
850	.2	5	.005	.130						4
900	.2	3	.005	.070						5
950	.2	6	.005	.115						6
1000	.2	7	.005	.060						7
800S 1050 E	.1	3	.005	.900						8
										9
900S 0 E	.1	3	.005	.130						10
50	.2	5	.005	.210						11
100	.1	3	.005	.145						12
150	.2	1	.005	.060						13
200	.1	6	.005	.140						14
250	.2	2	.080	.120						15
300	.1	2	.010	.420						16
350	.1	4	.010	.080						17
400	.1	1	.005	.110						18
450	.1	6	.005	.220						19
500	.1	3	.005	.090						20
600	.1	3	.005	.220						21
650	.1	1	.005	.220						22
700	.2	1	.005	.130						23
750	.1	11	.005	.175						24
800	.2	2	.005	.140						25
850	.1	5	.010	.150						26
900	.3	8	.010	.155						27
950	.1	4	.005	.040						28
1000	.2	7	.005	.160						29
1050	.1	10	.010	.300						30
1100	.1	8	.005	.075						31
1150	.2	4	.005	.085						32
900S 1240 E	.2	5	.005	.110						33
										34
1000S 0 E	.1	4	.005	.115						35
25	.1	1	.005	.080						36
50	.1	1	.005	.110						37
75	.1	2	.010	.145						38
1000S 100 E	.1	1	.010	.200						39
										40

All reports are the confidential property of clients  
All results are in PPM.

DIGESTION:.....

DETERMINATION:.....

DATE SAMPLES RECEIVED Oct. 23, 1980

DATE REPORTS MAILED Nov 17, 1980

ASSAYER  
=====

DEAN TOYE, B.Sc.  
CHIEF CHEMIST  
CERTIFIED B.C. ASSAYER



To: Graham Island Mines,

ACME ANALYTICAL LABORATORIES LTD.

Assaying & Trace Analysis

852 E. Hastings St., Vancouver, B. C. V6A 1R6

phone:253 - 3158

File No. 80-1315

Type of Samples Soil

Disposition

### GEOCHEMICAL ASSAY CERTIFICATE

YAK 2

9

SAMPLE No.		Ag	As	Au	Hg						
1000S	125 E	.1	3	.005	.195						1
	150	.1	6	.005	.150						2
	175	.1	5	.005	.150						3
	200	.1	1	.005	.210						4
	225	.1	5	.005	.090						5
	250	.2	3	.005	.075						6
	275	.1	4	.005	.070						7
	300	.1	2	.005	.095						8
	325	.1	5	.005	.080						9
	350	.1	3	.005	.105						10
	375	.1	5	.005	.085						11
	400	.1	1	.005	.070						12
	425	.1	3	.005	.105						13
	450	.1	1	.005	.060						14
	475	.2	9	.005	.210						15
	500	.2	6	.005	.185						16
	525	.5	7	.005	.185						17
	550	.1	6	.005	.170						18
	575	.1	3	.005	.095						19
1000S	600 E	.1	1	.005	.120						20
											21
1000S	625 E	.1	6	.005	.380						22
	650	.1	6	.010	.180						23
	675	.1	4	.015	.290						24
	700	.1	17	.010	.745						25
	725	.4	11	.005	.055						26
	750	.3	10	.005	.050						27
	775	.2	3	.005	.060						28
	800	.1	1	.005	.065						29
	825	.2	5	.005	.205						30
	850	.1	8	.005	.115						31
	875	.2	9	.005	.385						32
	900	.1	4	.005	.205						33
	925	.1	6	.010	.280						34
	950	.3	12	.005	.230						35
	975	.2	10	.005	.200						36
	1000	.3	10	.005	.315						37
1000S	1025 E	.2	10	.005	.190						38
											39
											40

All reports are the confidential property of clients  
All results are in PPM.

DIGESTION:.....

DETERMINATION:.....

DATE SAMPLES RECEIVED Oct. 23, 1980

DATE REPORTS MAILED Nov. 17, 1980

ASSAYER

DEAN TOYE, B.Sc.  
CHIEF CHEMIST  
CERTIFIED B.C. ASSAYER



To: Graham Island Mines,

ACME ANALYTICAL LABORATORIES LTD.

Assaying & Trace Analysis

852 E. Hastings St., Vancouver, B. C. V6A 1R6

phone:253 - 3158

File No. 80-1315  
 Type of Samples Soil  
 Disposition \_\_\_\_\_

**GEOCHEMICAL ASSAY CERTIFICATE**

YAK 2

10

SAMPLE No.	Ag	As	Au	Hg						
1000S 1050 E	.1	4	.005	.120						1
1075	.1	1	.005	.100						2
1100	.1	4	.005	.170						3
1125	.1	2	.005	.165						4
1150	.2	8	.005	.145						5
1200	.1	2	.005	.065						6
1250	.1	1	.005	.075						7
1000S 1275 E	.1	1	.005	.065						8
										9
1100S 0 E	.1	1	.005	.105						10
50	.1	1	.005	.135						11
100	.1	4	.005	.090						12
150	.1	1	.005	.270						13
200	.1	2	.005	.120						14
250	.1	1	.005	.120						15
300	.1	6	.010	.135						16
350	.1	2	.005	.165						17
400	.1	2	.005	.105						18
450	.1	5	.005	.180						19
500	.1	2	.005	.045						20
550	.1	3	.005	.080						21
600	.1	1	.005	.100						22
650	.1	1	.005	.065						23
700	.1	7	.005	.050						24
750	.1	5	.005	.110						25
800	.2	3	.005	.095						26
850	.3	11	.005	.220						27
900	.1	1	.005	.075						28
950	.1	4	.005	.160						29
1000	.1	7	.005	.210						30
1050	.1	4	.005	.160						31
1100	.2	6	.015	.215						32
1150	.2	6	.005	.160						33
1200	.1	3	.005	.080						34
1250	.1	1	.005	.075						35
1300	.1	2	.005	.125						36
1350	.1	2	.005	.105						37
1100S 1400 E	.1	2	.010	.165						38
										39
										40

All reports are the confidential property of clients  
 All results are in PPM.

DIGESTION:.....

DETERMINATION:.....

DATE SAMPLES RECEIVED Oct. 23, 1980

DATE REPORTS MAILED Nov. 17, 1980

ASSAYER \_\_\_\_\_

DEAN TOYE, B.Sc.  
 CHIEF CHEMIST  
 CERTIFIED B.C. ASSAYER



To: Graham Island Mines,

ACME ANALYTICAL LABORATORIES LTD.

Assaying & Trace Analysis

852 E. Hastings St., Vancouver, B. C. V6A 1R6

phone:253 - 3158

80-1315

File No. \_\_\_\_\_

Type of Samples Soil

Disposition \_\_\_\_\_

### GEOCHEMICAL ASSAY CERTIFICATE

YAK 2

SAMPLE No.	Ag	As	Au	Hg						
1200S 0 E	.2	4	.005	.175						1
100	.1	10	.005	.125						2
150	.1	4	.005	.060						3
200	.1	8	.005	.105						4
250	.1	1	.035	.085						5
300	.1	11	.005	.160						6
350	.3	7	.005	.230						7
400	.1	1	.005	.165						8
450	.2	2	.005	.085						9
500	.1	2	.005	.075						10
550	.1	9	.005	.105						11
600	.1	8	.005	.065						12
650	.1	2	.005	.035						13
700	.1	8	.005	.075						14
750	.1	8	.005	.030						15
800	.1	6	.005	.110						16
850	.2	11	.005	.305						17
950	.3	3	.005	.650						18
1000	.1	12	.005	.155						19
1050	.1	9	.005	.215						20
1100	.2	9	.005	.225						21
1150	.1	9	.005	.300						22
1200	.1	6	.005	.210						23
1250	.1	4	.005	.190						24
1300	.1	1	.005	.125						25
1400	.1	2	.005	.085						26
1450	.1	3	.005	.120						27
1200S 1500E	.1	6	.005	.065						28
1300S 0E	.1	6	.005	.100						29
50	.1	11	.005	.140						30
100	.1	7	.005	.055						31
150	.1	3	.005	.040						32
200	.1	4	.005	.120						33
250	.1	5	.005	.170						34
300	.1	3	.005	.185						35
350	.1	8	.005	.090						36
1300S 400E	.1	8	.005	.075						37
										38
										39
										40

All reports are the confidential property of clients  
All results are in PPM.

DIGESTION:.....

DETERMINATION:.....

DATE SAMPLES RECEIVED Oct. 23, 1980

DATE REPORTS MAILED Nov. 17, 1980

ASSAYER \_\_\_\_\_

DEAN TOYE, B.Sc.  
CHIEF CHEMIST  
CERTIFIED B.C. ASSAYER



To: Graham Island Mines,

ACME ANALYTICAL LABORATORIES LTD.

Assaying & Trace Analysis

852 E. Hastings St., Vancouver, B. C. V6A 1R6

phone: 253 - 3158

File No. 80-1315

Type of Samples Soil

Disposition

**GEOCHEMICAL ASSAY CERTIFICATE**

YAK 2

12

SAMPLE No.	Ag	As	Au	Hg						
1300S 450 E	.1	2	.005	.070						1
500	.1	1	.005	.030						2
550	.2	2	.005	.235						3
600	.1	3	.005	.095						4
650	.1	7	.005	.200						5
700	.2	4	.005	.165						6
750	.1	3	.005	.020						7
800	.2	7	.005	.120						8
850	.1	3	.005	.175						9
900	.1	1	.005	.055						10
950	.1	7	.005	.105						11
1000	.2	10	.015	1.750						12
1050	.2	5	.005	.135						13
1100	.2	10	.095	.210						14
1150	.2	72	.010	.180						15
1300S 1200 E	.1	10	.005	.250						16
1400S 0 E	.1	6	.005	.135						17
50	.1	3	.005	.085						18
100	.1	3	.005	.085						19
150	.1	3	.005	.105						20
200	.1	3	.005	.145						21
250	.4	3	.005	.075						22
300	.1	8	.005	.160						23
350	1.4	12	.005	.085						24
400	6.8	7	.005	.095						25
450	.3	3	.005	.070						26
500	1.0	3	.005	.080						27
550	.2	6	.005	.105						28
600	.3	5	.005	.230						29
650	.1	7	.015	.585						30
700	.4	7	.005	.115						31
750	.1	2	.005	.040						32
850	.5	7	.005	.280						33
900	.1	5	.005	.170						34
950	.4	9	.005	.200						35
1000	.2	3	.005	.165						36
1400S 1050 E	.2	7	.005	.205						37
										38
										39
										40

All reports are the confidential property of clients  
All results are in PPM.

DIGESTION:.....

DETERMINATION:.....

DATE SAMPLES RECEIVED Oct 23, 1980

DATE REPORTS MAILED Nov 17, 1980

ASSAYER

DEAN TOYE, B.Sc.  
CHIEF CHEMIST  
CERTIFIED B.C. ASSAYER



To: Graham Island Mines,

ACME ANALYTICAL LABORATORIES LTD.

Assaying & Trace Analysis

852 E. Hastings St., Vancouver, B. C. V6A 1R6

phone:253 - 3158

File No. 80-1315

Type of Samples Soil

Disposition

GEOCHEMICAL ASSAY CERTIFICATE

YAK 2

13

SAMPLE No.	Ag	As	Au	Hg						
1400S 1100 E	.1	5	.005	.145						1
1200	.1	3	.005	.115						2
1300	.1	5	.005	.290						3
1350	.1	7	.005	.180						4
1400S 1450 E	.1	7	.005	.210						5
										6
1500S 0 E	.2	3	.005	.220						7
50	.1	5	.010	.250						8
100	.1	4	.005	.120						9
150	.1	3	.005	.170						10
200	.1	3	.005	.100						11
250	.1	1	.005	.060						12
300	.2	4	.005	.060						13
350	.1	1	.005	.060						14
400	.1	2	.005	.105						15
450	.1	1	.005	.080						16
500	.1	4	.005	.090						17
550	.1	3	.005	.085						18
600	.1	2	.010	.070						19
650	.1	2	.010	.165						20
700	.1	5	.005	.210						21
750	.1	5	.005	.190						22
800	.1	6	.005	.110						23
850	.1	3	.005	.055						24
900	.1	3	.005	.180						25
950	.1	6	.005	.190						26
1000	.1	7	.010	.085						27
1100	.1	5	.005	.150						28
1150	.1	12	.005	.180						29
1500S 1200 E	.1	1	.005	.035						30
										31
1600S 0 E	.1	1	.005	.085						32
50	.1	2	.005	.105						33
100	.1	6	.005	.140						34
150	.1	6	.005	.290						35
200	.1	7	.005	.110						36
250	.1	1	.005	.050						37
1600S 300 E	.1	1	.005	.060						38
										39
										40

All reports are the confidential property of clients  
All results are in PPM.

DIGESTION:.....

DETERMINATION:.....

DATE SAMPLES RECEIVED Oct. 23, 1980

DATE REPORTS MAILED Nov. 17, 1980

ASSAYER  
=====

DEAN TOYE, B.Sc.  
CHIEF CHEMIST  
CERTIFIED B.C. ASSAYER



To: Graham Island Mines,

ACME ANALYTICAL LABORATORIES LTD.

Assaying & Trace Analysis

852 E. Hastings St., Vancouver, B. C. V6A 1R6

phone: 253 - 3158

80-1315

File No. \_\_\_\_\_

Soil

Type of Samples \_\_\_\_\_

Disposition \_\_\_\_\_

**GEOCHEMICAL ASSAY CERTIFICATE**

YAK 2

14

SAMPLE No.	Ag	As	Au	Hg						
1600S 350 E	.1	4	.005	.100						1
400	.1	3	.005	.070						2
450	.1	7	.005	.215						3
500	.1	1	.005	.040						4
550	.1	4	.005	.150						5
600	.1	6	.005	.080						6
650	.1	2	.005	.125						7
700	.1	6	.005	.255						8
750	.1	5	.005	.260						9
1600S 800 E	.1	4	.005	.205						10
										11
1700S 0 E	.1	1	.005	.080						12
50	.1	1	.005	.125						13
100	.2	4	.005	.155						14
150	.3	7	.010	.095						15
200	.1	3	.005	.235						16
250	.1	1	.005	.230						17
300	.1	1	.015	.050						18
350	.1	1	.005	.115						19
400	.1	2	.005	.160						20
450	.1	4	.005	.110						21
500	.1	1	.005	.095						22
550	.1	2	.005	.260						23
600	.1	5	.005	.170						24
650	.1	16	.005	.205						25
700	.1	2	.005	.025						26
750	.1	5	.005	.150						27
800	.1	4	.005	.230						28
850	.2	6	.005	.160						29
900	.1	1	.005	.050						30
950	.3	7	.010	.145						31
1000	.1	1	.005	.090						32
1050	.1	1	.010	.055						33
1100	.1	1	.005	.120						34
1150	.1	4	.005	.080						35
1700S 1200 E	.1	4	.005	.105						36
										37
										38
										39
										40

All reports are the confidential property of clients  
All results are in PPM.

DIGESTION:.....

DETERMINATION:.....

DATE SAMPLES RECEIVED Oct. 23, 1980

DATE REPORTS MAILED Nov. 17, 1980

ASSAYER \_\_\_\_\_

DEAN TOYE, B.Sc.  
CHIEF CHEMIST  
CERTIFIED B.C. ASSAYER





To: Graham Island Mines,

ACME ANALYTICAL LABORATORIES LTD.

Assaying & Trace Analysis

852 E. Hastings St., Vancouver, B. C. V6A 1R6

phone:253 - 3158

File No. 80-1315

Type of Samples Soil

Disposition

GEOCHEMICAL ASSAY CERTIFICATE

YAK 2

SAMPLE No.	Ag	As	Au	Hg							
1800S 0 E	.3	1	.005	.225							1
25	.2	1	.015	.140							2
50	.3	1	.005	.075							3
75	.1	4	.010	.170							4
100	.3	1	.010	.075							5
125	.4	1	.005	.230							6
150	.1	3	.010	.080							7
175	.1	2	.005	.080							8
200	.1	2	.005	.140							9
225	.1	2	.010	.130							10
250	.2	1	.010	.055							11
275	.1	1	.005	.035							12
300	.1	1	.005	.120							13
325	.2	3	.005	.170							14
350	.2	2	.005	.100							15
375	.1	5	.005	.155							16
1800S 400 E	.1	4	.005	.075							17
											18
1800S 425 E	.1	4	.005	.085							19
450	.2	5	.005	.150							20
475	.1	4	.005	.200							21
500	.1	7	.005	.225							22
525	.1	4	.005	.160							23
550	.1	4	.005	.100							24
575	.1	2	.005	.045							25
600	.1	6	.005	.180							26
625	.1	1	.005	.085							27
650	.1	2	.005	.140							28
675	.2	2	.005	.070							29
700	.1	6	.005	.305							30
725	.1	7	.005	.200							31
750	.2	4	.005	.290							32
775	.2	4	.005	.390							33
800	.1	4	.005	.145							34
825	.2	3	.005	.220							35
850	.2	2	.005	.145							36
875	.1	3	.005	.140							37
1800S 900 E	.2	8	.005	.205							38
											39
											40

All reports are the confidential property of clients  
All results are in PPM.

DIGESTION:.....

DETERMINATION:.....

DATE SAMPLES RECEIVED Oct. 23, 1980

DATE REPORTS MAILED Nov. 17, 1980

ASSAYER  
=====

DEAN TOYE, B.Sc.  
CHIEF CHEMIST  
CERTIFIED B.C. ASSAYER



To: Graham Island Mines,

ACME ANALYTICAL LABORATORIES LTD.

Assaying & Trace Analysis

852 E. Hastings St., Vancouver, B. C. V6A 1R6

phone: 253 - 3158

File No. 80-1315

Type of Samples Soils

Disposition

### GEOCHEMICAL ASSAY CERTIFICATE

YAK 2

16

SAMPLE No.	Ag	As	Au	Hg						
1800S 925 E	.1	4	.005	.170						1
950	.3	1	.005	.210						2
975	.3	1	.005	.260						3
1050	.1	1	.010	.100						4
1075	.1	1	.015	.090						5
1125	.1	1	.005	.155						6
1800S 1200 E	.1	2	.005	.250						7
										8
1900S 0 E	.1	4	.005	.125						9
50	.1	2	.005	.205						10
100	.1	2	.005	.090						11
150	.1	2	.005	.100						12
200	.1	3	.005	.205						13
250	.1	2	.005	.065						14
300	.1	8	.005	.110						15
350	.1	8	.005	.150						16
400	.1	4	.005	.175						17
450	.1	4	.010	.215						18
500	.1	1	.005	.240						19
550	.1	1	.005	.090						20
600	.1	1	.005	.125						21
700	.1	4	.005	.250						22
750	.1	3	.005	.175						23
800	.1	2	.005	.160						24
850	.1	6	.005	.315						25
900	.1	9	.005	.215						26
1900S 950 E	.1	7	.005	.075						27
										28
2000S 0 E	.1	7	.005	.445						29
25	.2	1	.005	.415						30
50 (N.S.)										31
75	.1	2	.005	.125						32
100	.1	1	.005	.260						33
125	.1	1	.005	.100						34
150	.1	1	.005	.170						35
175	.1	1	.005	.040						36
200	.1	5	.005	.205						37
2000S 225 E	.1	2	.005	.130						38
										39
										40

All reports are the confidential property of clients  
All results are in PPM.

DIGESTION:.....

DETERMINATION:.....

DATE SAMPLES RECEIVED Oct. 23, 1980

DATE REPORTS MAILED Nov. 17, 1980

ASSAYER  
=====

DEAN TOYE, B.Sc.  
CHIEF CHEMIST  
CERTIFIED B.C. ASSAYER



To: Graham Island Mines,

ACME ANALYTICAL LABORATORIES LTD.

Assaying & Trace Analysis

852 E. Hastings St., Vancouver, B. C. V6A 1R6

phone:253 - 3158

File No. 80-1315

Type of Samples Soil

Disposition

GEOCHEMICAL ASSAY CERTIFICATE

YAK 2

17

SAMPLE No.	Ag	As	Au	Hg						
2000S 250 E	.1	1	.005	.180						1
275	.1	2	.005	.105						2
300	.1	1	.005	.400						3
325	.1	4	.005	.310						4
350	.1	5	.005	.230						5
375	.1	6	.020	.250						6
400	.1	3	.005	.110						7
425	.1	3	.005	.120						8
450	.1	3	.005	.265						9
475	.1	2	.005	.220						10
500	.1	2	.005	.130						11
525	.1	1	.005	.150						12
550	.1	1	.005	.135						13
575	.1	2	.005	.130						14
600	.1	3	.005	.100						15
625	.1	16	.005	.110						16
650	.1	2	.005	.215						17
675	.1	7	.005	.180						18
2000S 700 E	.1	4	.005	.165						19
2000S 725 E	.1	4	.005	.165						21
750	.1	7	.005	.200						22
775	.1	3	.005	.130						23
800	.1	3	.005	.160						24
825	.1	6	.005	.170						25
850	.1	1	.005	.150						26
875	.1	2	.005	.200						27
900	.1	1	.005	.160						28
925	.1	6	.005	.205						29
950	.1	6	.005	.135						30
975	.1	9	.005	.190						31
1000	.1	4	.005	.200						32
1025	.1	8	.005	.220						33
1050	.1	1	.005	.220						34
1075	.1	1	.005	.150						35
1100	.1	1	.005	.060						36
1125	.2	21	.010	.220						37
2000S 1150 E	.1	1	.005	.115						38
										39
										40

All reports are the confidential property of clients  
All results are in PPM.

DIGESTION:.....

DETERMINATION:.....

DATE SAMPLES RECEIVED Oct. 23, 1980

DATE REPORTS MAILED Nov. 17, 1980

ASSAYER \_\_\_\_\_

DEAN TOYE, B.Sc.  
CHIEF CHEMIST  
CERTIFIED B.C. ASSAYER



To: .Graham Island Mines,

ACME ANALYTICAL LABORATORIES LTD.

Assaying & Trace Analysis

852 E. Hastings St., Vancouver, B. C. V6A 1R6

phone:253 - 3158

File No. 80-1315

Type of Samples Soil

Disposition \_\_\_\_\_

### GEOCHEMICAL ASSAY CERTIFICATE

YAK 2

18	SAMPLE No.		Ag	As	Au	Hg							
	2000S	1175 E	.1	1	.005	.150							
	1200	.1	1	.005	.180								2
2000S	1225 E	.1	4	.005	.145								3
													4
													5
													6
													7
													8
													9
													10
													11
													12
													13
													14
													15
													16
													17
													18
													19
													20
													21
													22
													23
													24
													25
													26
													27
													28
													29
													30
													31
													32
													33
													34
													35
													36
													37
													38
													39
													40

All reports are the confidential property of clients  
All results are in PPM.

DIGESTION:.....

DETERMINATION:.....

DATE SAMPLES RECEIVED Oct. 23, 1980

DATE REPORTS MAILED Nov. 17, 1980

ASSAYER \_\_\_\_\_

DEAN TOYE, B.Sc.  
CHIEF CHEMIST  
CERTIFIED B.C. ASSAYER



To: Graham Island Mines,  
c/o 1274 - 56th St.,  
Delta, B.C.  
V4L 2A4

ACME ANALYTICAL LABORATORIES LTD.

Assaying & Trace Analysis

852 E. Hastings St., Vancouver, B. C. V6A 1R6

phone: 253 - 3158

File No. 80-1172

Type of Samples Soil

Disposition \_\_\_\_\_

**GEOCHEMICAL ASSAY CERTIFICATE**

YAK 3

1

SAMPLE No.	Ag	As	ppb Au	Hg							
200E 0 N	.2	2	10	.160							1
25	.1	1	15	.090							2
50	.2	2	5	.160							3
75	.1	6	5	.215							4
100	.3	6	5	.235							5
125	.3	3	5	.210							6
150	.1	4	5	.155							7
175	.2	2	5	.150							8
200	.3	10	5	.160							9
225	.3	11	5	.170							10
250	.4	4	5	.070							11
275	.2	5	5	.070							12
300	.4	10	5	.280							13
325	.1	2	5	.040							14
350	.2	4	5	.050							15
375	.4	7	5	.070							16
200E 400 N	.5	9	5	.160							17
											18
200E 425 N	.5	2	5	.205							19
450	.2	2	5	.140							20
475	.4	7	5	.120							21
500	.4	3	5	.150							22
525	.3	1	5	.140							23
550	.3	4	5	.050							24
575	.2	5	5	.100							25
600	.1	2	5	.080							26
625	.2	7	5	.145							27
650	.3	5	5	.100							28
675	.2	3	5	.080							29
700	.2	2	5	.150							30
725	.2	3	5	.135							31
750	.2	3	5	.080							32
775	.2	2	5	.050							33
800	.5	2	5	.230							34
825	.3	6	5	.190							35
850	.2	2	5	.480							36
875	.2	5	5	.230							37
200E 900 N	.2	6	5	.100							38
											39
											40

All reports are the confidential property of clients  
All results are in PPM.

DIGESTION:.....

DETERMINATION:.....

DATE SAMPLES RECEIVED Sept. 29, 1980

DATE REPORTS MAILED Oct. 31, 1980

ASSAYER \_\_\_\_\_

DEAN TOYE, B.Sc.  
CHIEF CHEMIST  
CERTIFIED B.C. ASSAYER



To: Graham Island Mines,

ACME ANALYTICAL LABORATORIES LTD.

Assaying & Trace Analysis

852 E. Hastings St., Vancouver, B. C. V6A 1R6

phone:253 - 3158

File No. 80-1172

Type of Samples - Soil

Disposition

### GEOCHEMICAL ASSAY CERTIFICATE

YAK 3

2

SAMPLE No.	Ag	As	ppb Au	Hg							
200E 925 N	.2	6	5	.100							1
950	.2	2	5	.140							2
975	.4	1	5	.270							3
1000	.1	10	5	.190							4
1025	.2	6	10	.055							5
1050	.1	6	10	.240							6
1075	1.0	4	5	.360							7
1100	.3	5	5	.145							8
1125	.2	6	5	.160							9
1150	.2	1	5	.265							10
1175	.2	39	5	.430							11
1200	.1	5	5	.140							12
1225	.1	1	5	.175							13
1250	.2	3	5	.240							14
1275	.2	2	5	.190							15
1300	.2	5	5	.210							16
1325	.2	4	5	.130							17
1350	.4	4	5	.260							18
1375	.3	5	5	.230							19
1400	.2	6	5	.160							20
1425	.3	11	5	.150							21
1450	.2	6	5	.220							22
1475	.3	7	5	.200							23
200E 1500 N	.2	8	5	.165							24
											25
400E 0 N	.2	4	5	.100							26
25	.2	5	5	.100							27
50	.1	8	5	.130							28
75	.2	3	5	.170							29
100	.2	7	5	.160							30
125	.1	11	5	.305							31
150	.2	4	5	.100							32
175	.7	8	15	.250							33
200	.2	8	5	.325							34
225	.2	10	5	.205							35
250	.1	9	5	.155							36
275	.3	11	5	.135							37
400E 300 N	.2	11	5	.280							38
											39
											40

All reports are the confidential property of clients  
All results are in PPM.

DIGESTION:.....

DETERMINATION:.....

DATE SAMPLES RECEIVED Sept. 29, 1980

DATE REPORTS MAILED Oct. 31, 1980

ASSAYER

DEAN TOYE, B.Sc.  
CHIEF CHEMIST  
CERTIFIED B.C. ASSAYER



To: Graham Island Mines,

ACME ANALYTICAL LABORATORIES LTD.

Assaying & Trace Analysis

852 E. Hastings St., Vancouver, B. C. V6A 1R6

phone: 253 - 3158

File No. 80-1172

Type of Samples Soil

Disposition

GEOCHEMICAL ASSAY CERTIFICATE

YAK 3

SAMPLE No.	Ag	As	ppb Au	Hg							
400E 325 N	.1	11	5	.290							1
350	.4	6	5	.105							2
375	.1	8	5	.195							3
400	.1	8	5	.125							4
425	.1	12	5	.215							5
450	.1	10	5	.205							6
475	.1	7	5	.130							7
500	.1	10	10	.200							8
525	.1	11	25	.215							9
550	.1	5	5	.220							10
575	.3	4	5	.035							11
600	.2	10	5	.250							12
625	.4	6	5	.245							13
650	.1	8	5	.130							14
675	.3	8	5	.160							15
400E 700 N	.1	11	5	.210							16
											17
400E 725 N	.2	7	5	.190							18
750	.1	8	5	.250							19
775	.6	5	5	.360							20
800	.2	7	5	.205							21
825	.1	9	5	.050							22
850	.1	7	5	.145							23
875	.1	12	5	.200							24
900	.1	12	5	.190							25
925	.1	11	5	.120							26
950	.3	9	5	.420							27
975	.1	13	5	.265							28
1000	.4	4	5	.170							29
1025	.5	3	5	.180							30
1050	.2	4	5	.060							31
1075	.1	6	5	.170							32
1100	.1	8	5	.200							33
1125	.2	5	5	.150							34
1150	.1	11	5	.190							35
1175	.1	9	5	.230							36
1200	.1	10	5	.280							37
400E 1225 N	.1	8	10	.225							38
											39
											40

All reports are the confidential property of clients  
All results are in PPM.

DIGESTION:.....

DETERMINATION:.....

DATE SAMPLES RECEIVED Sept. 29, 1980

DATE REPORTS MAILED Oct. 31, 1980

ASSAYER

DEAN TOYE, B.Sc.  
CHIEF CHEMIST  
CERTIFIED B.C. ASSAYER



To: Graham Island Mines,

ACME ANALYTICAL LABORATORIES LTD.

Assaying & Trace Analysis

852 E. Hastings St., Vancouver, B. C. V6A 1R6

phone: 253 - 3158

File No. 80-1172

Type of Samples Soil

Disposition \_\_\_\_\_

**GEOCHEMICAL ASSAY CERTIFICATE**

YAK 3

4	SAMPLE No.	Ag	As	Pb	Hg						
	400E 1250 N	.1	9	5	.150						1
	1275	.4	5	5	.140						2
	1300	.2	2	5	.110						3
	1325	.1	9	10	.160						4
	1350	.1	4	5	.140						5
	1375	.2	8	5	.190						6
	1400	.4	7	5	.115						7
	1425	.1	14	5	.120						8
	1450	.1	10	5	.185						9
	1475	.1	8	5	.205						10
	400E 1500 N	.1	13	5	.225						11
											12
	600E 0 N	.1	6	20	.130						13
	25	.1	20	10	.160						14
	50	.4	6	10	.460						15
	75	.2	10	5	.180						16
	100	.1	13	5	.185						17
	125	.2	9	5	.150						18
	150	.1	6	15	.130						19
	175	.2	7	10	.255						20
	200	.1	8	15	.260						21
	225	.3	6	5	.340						22
	250	.1	12	5	.230						23
	275	.1	9	5	.225						24
	300	.1	8	5	.180						25
	325	.1	7	5	.100						26
	350	.1	10	5	.180						27
	375	.1	7	5	.150						28
	400	.1	9	15	.250						29
	425	.1	9	5	.240						30
	450	.1	7	25	.275						31
	475	.1	9	5	.250						32
	500	.1	10	5	.299						33
	525	.3	8	15	.190						34
	550	.1	5	5	.360						35
	575	.1	8	5	.180						36
	600	.1	11	10	.220						37
	600E 625 N	.1	11	5	.180						38
											39
											40

All reports are the confidential property of clients  
All results are in PPM.

DIGESTION:.....

DETERMINATION:.....

DATE SAMPLES RECEIVED Sept. 29, 1980

DATE REPORTS MAILED Oct. 31, 1980

ASSAYER \_\_\_\_\_

DEAN TOYE, B.Sc.  
CHIEF CHEMIST  
CERTIFIED B.C. ASSAYER





To: Graham Island Mines.

ACME ANALYTICAL LABORATORIES LTD.

Assaying & Trace Analysis

852 E. Hastings St., Vancouver, B. C. V6A 1R6

phone: 253 - 3158

File No. 80-1172

Type of Samples Soil

Disposition

**GEOCHEMICAL ASSAY CERTIFICATE**

YAK 3

SAMPLE No.	Ag	As	ppb Au	Hg						
600E 650 N	.1	6	5	.250						1
675	.2	5	5	.150						2
700	.4	4	5	.300						3
725	.1	2	5	.075						4
750	.1	4	5	.120						5
775	.1	2	5	.060						6
800	.1	4	5	.090						7
825	.1	6	5	.150						8
850	.1	5	5	.100						9
875	.1	3	5	.165						10
900	.1	6	5	.140						11
925	.2	7	5	.175						12
950	.1	8	5	.150						13
975	.1	6	5	.110						14
1000	.1	7	10	.300						15
1025	.1	5	10	.115						16
1050	.1	9	10	.280						17
1075	.1	8	10	.140						18
600E 1100 N	.1	7	5	.130						19
600E 1125 N	.1	5	5	.085						21
1150	.1	4	5	.095						22
1175	.1	10	5	.070						23
1200	.1	3	5	.100						24
1225	.1	5	5	.170						25
1250	.1	4	5	.085						26
1275	.1	3	5	.170						27
1300	.3	2	5	.200						28
1325	.2	6	5	.155						29
1350	.1	6	5	.150						30
1375	.1	4	5	.160						31
1400	.1	7	15	.110						32
1425	.1	5	10	.120						33
1450	.1	6	5	.150						34
1475	.1	8	10	.125						35
600E 1500 N	.1	5	5	.090						36
										37
										38
										39
										40

All reports are the confidential property of clients  
All results are in PPM.

DIGESTION:.....

DETERMINATION:.....

DATE SAMPLES RECEIVED Sept. 29, 1980

DATE REPORTS MAILED Oct. 31, 1980

ASSAYER  
=====

DEAN TOYE, B.Sc.  
CHIEF CHEMIST  
CERTIFIED B.C. ASSAYER



To: Graham Island Mines,

ACME ANALYTICAL LABORATORIES LTD.

Assaying & Trace Analysis

852 E. Hastings St., Vancouver, B. C. V6A 1R6

phone: 253 - 3158

80-1172

File No. -----

Type of Samples Soil

Disposition -----

**GEOCHEMICAL ASSAY CERTIFICATE**

YAK 3

SAMPLE No.	Ag	As	ppb Au	Hg						
6 800E 0 N	.2	4	5	.065						1
25	.2	4	5	.090						2
50	.1	5	5	.220						3
75	.1	4	5	.120						4
100	.1	6	5	.170						5
125	.7	3	5	.430						6
150	.1	9	5	.075						7
175	.1	7	5	.090						8
200	.1	8	15	.110						9
225	.1	8	5	.190						10
250	.1	6	5	.230						11
275	.1	6	5	.290						12
300	.1	3	5	.175						13
325	.1	7	5	.165						14
350	.1	7	5	.200						15
375	.1	2	5	.040						16
400	.1	2	5	.060						17
425	.1	3	5	.175						18
450	.1	6	5	.160						19
475	.1	4	5	.140						20
800E 500 N	.3	3	5	.280						21
800E 600 N	.1	7	5	.200						22
625	.2	8	5	.155						23
650	.1	6	5	.175						24
675	.3	7	5	.270						25
700	.2	3	5	.180						26
725	.2	7	5	.220						27
750	.2	8	5	.220						28
775	.1	8	5	.160						29
800	.2	7	5	.130						30
825	.4	5	5	.260						31
850	.1	6	5	.185						32
875	.7	2	5	.240						33
900	.3	11	5	.370						34
925	.2	8	5	.290						35
950	.1	8	5	.160						36
800E 975 N	.2	8	5	.250						37
										38
										39
										40

All reports are the confidential property of clients  
All results are in PPM.

DIGESTION:.....

DETERMINATION:.....

DATE SAMPLES RECEIVED Sept. 20, 1980

DATE REPORTS MAILED Oct. 31, 1980

ASSAYER  
=====

DEAN TOYE, B.Sc.  
CHIEF CHEMIST  
CERTIFIED B.C. ASSAYER



To: Graham Island Mines,

ACME ANALYTICAL LABORATORIES LTD.

Assaying & Trace Analysis

852 E. Hastings St., Vancouver, B. C. V6A 1R6

phone: 253 - 3158

File No. 80-1172

Type of Samples Soil

Disposition \_\_\_\_\_

**GEOCHEMICAL ASSAY CERTIFICATE**

YAK 3

7	SAMPLE No.		Ag	As	ppb Au	Hg							
	800E	1000 N	.1	7	10	.270							
	1025	.2	5	5	.315								2
	1050	.2	4	10	.180								3
	1075	.1	5	5	.075								4
	1100	.1	6	10	.150								5
	1125	.2	6	30	.290								6
	1150	.1	1	15	.215								7
	1175	.1	1	5	.220								8
	1200	.1	3	10	.140								9
	1225	.1	9	5	.125								10
	1250	.1	1	10	.200								11
	1275	.1	5	5	.110								12
	1300	.1	1	10	.115								13
	1325	.1	1	5	1.170								14
	1350	.1	1	5	.180								15
	1375	.1	1	5	.190								16
	1400	.1	2	10	.120								17
	1425	.1	1	5	.220								18
	1450	.1	5	5	.140								19
	1475	.1	1	5	.200								20
800E	1500 N	.1	5	5	.200								21
													22
													23
													24
													25
													26
													27
													28
													29
													30
													31
													32
													33
													34
													35
													36
													37
													38
													39
													40

All reports are the confidential property of clients  
All results are in PPM.

DIGESTION:.....

DETERMINATION:.....

DATE SAMPLES RECEIVED Sept. 29, 1980

DATE REPORTS MAILED Oct. 31, 1980

ASSAYER \_\_\_\_\_

DEAN TOYE, B.Sc.  
CHIEF CHEMIST  
CERTIFIED B.C. ASSAYER

Appendix C

Qualifications of supervisor and author  
of this report.

I am a graduate of the Camborne School  
of Mines, Cornwall, England; with an  
additional diploma in applied geochemistry.

I have been employed in mineral exploration  
in Canada since 1967 (10 years with ASARCO  
Exploration Co. of Canada Ltd.)

I am a Fellow of the Geological Association  
of Canada.

Dated at Vancouver, British Columbia, this  
day of March, 1981.

  
Peter G. Cutis



## APPENDIX D

### Statement of Costs

5 km. line slashing & picketing	@ 600/km.	\$ 3,000.00
1 km. = 3 man days		
2 days supervision	@ 280/day	560.00
53 km. sample line @ 1 man day/km.	@ 200/km.	10,600.00
5 days supervision @ \$280.00		1,400.00
1199 Assays @ \$9.25		<u>11,090.75</u>
		26,650.75
Report writing, drafting & copying		<u>2,000.00</u>
		28,650.00

Contract rate per man day calculated as follows:

Average wage + U.I.C. + C.P. per day	\$110.00
Accommodation & food per day	40.00
Office expenses per day	20.00
Transportation per day	<u>30.00</u>
	\$200.00

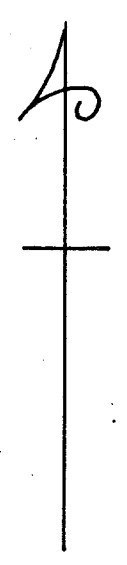
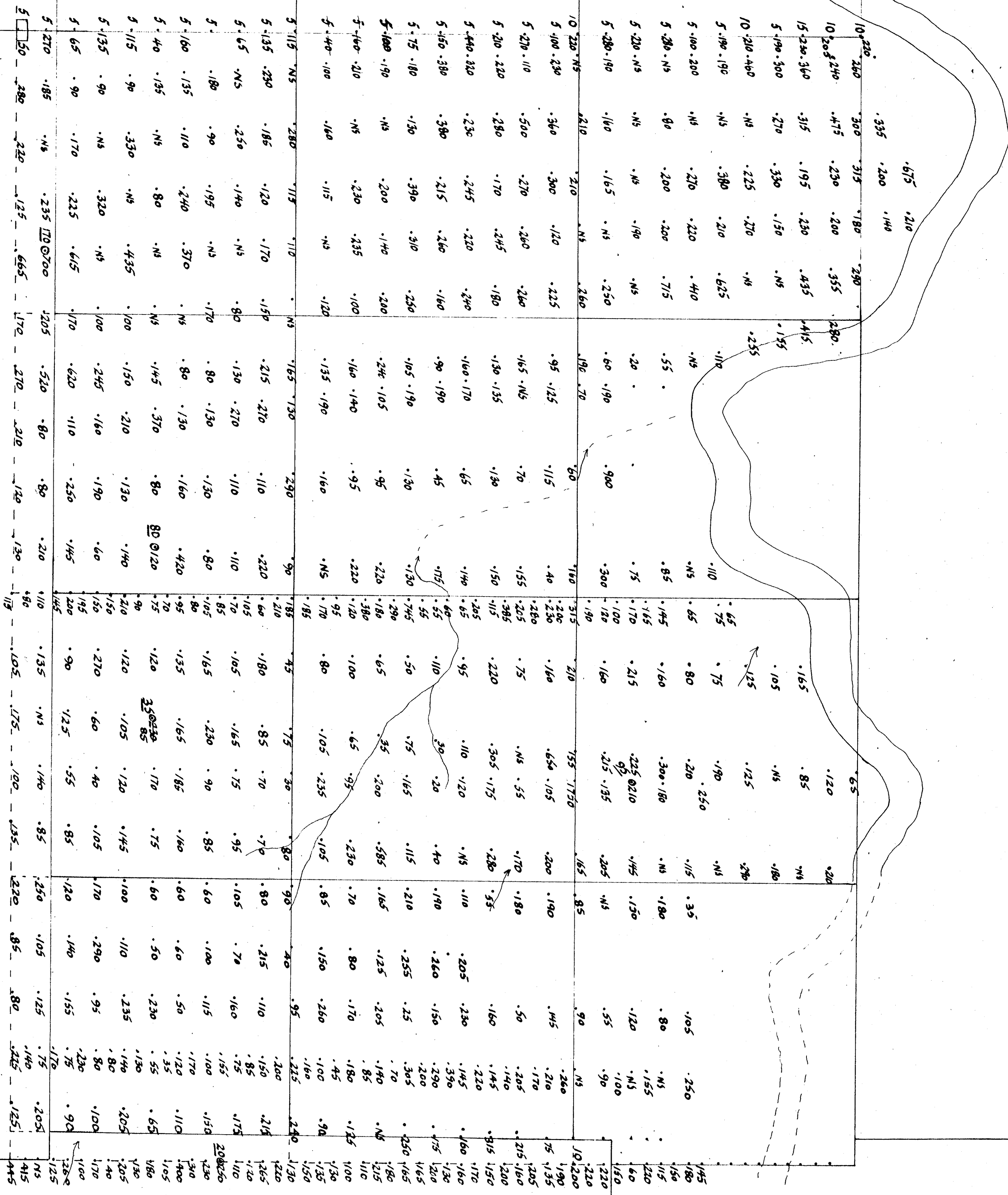




MB 11

Yak 1

MB 13



210 ppb Mercury  
800 ppb Gold

MINERAL RESOURCES BRANCH  
ASSESSMENT REPORT  
**8702**

Yak 2  
1895 (11)

SCALE	DATE	DRAWN BY	DWG. No.
1:5000		P.C.	
PREPARED BY Team Mineral Services Inc 1274 - 56th Street, Delta, B.C.			

Map 3

Corner



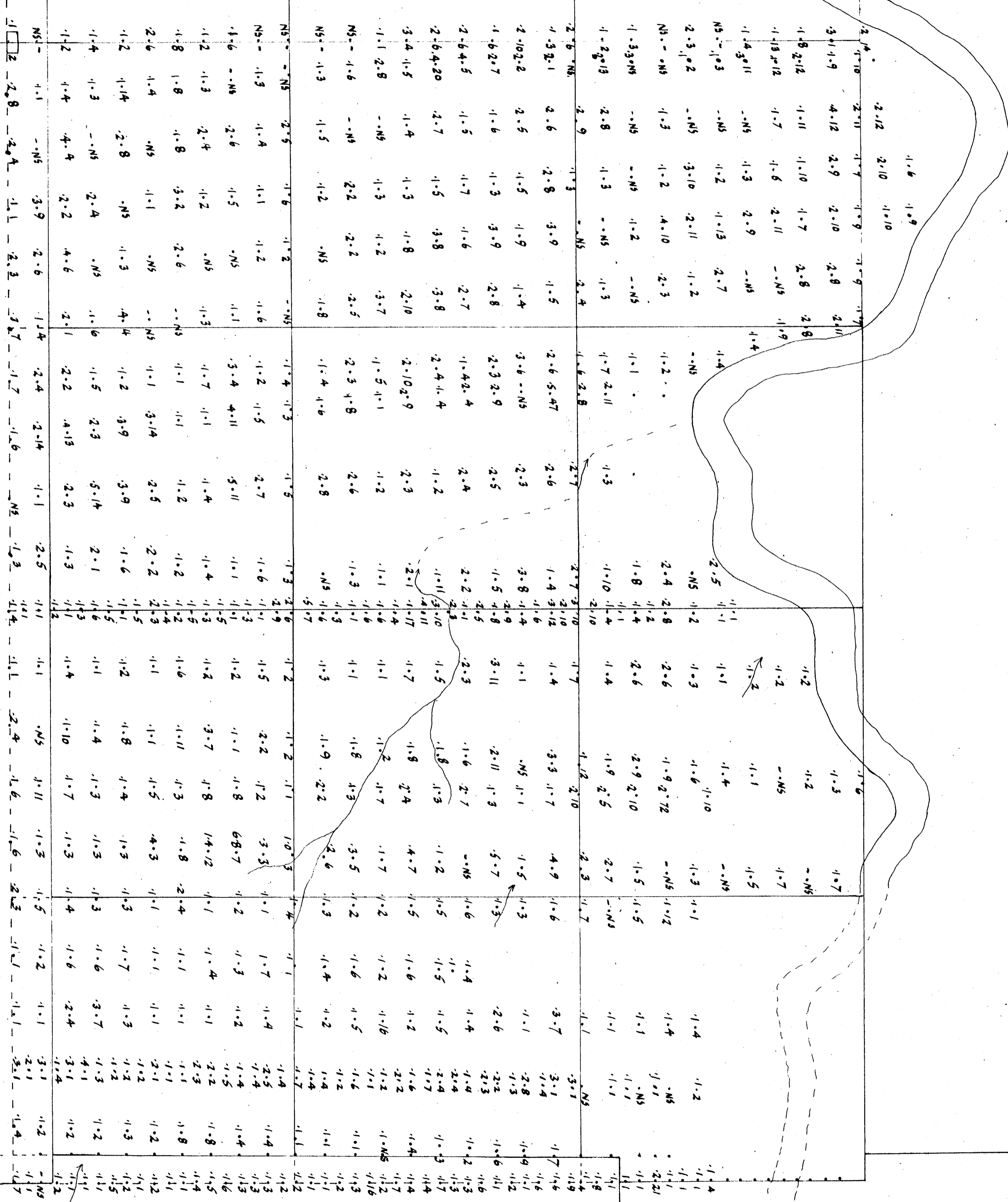
Yak 3



MB 11

Yak 1

MB 13



2.10 Ag - As ppm.

MINERAL RESOURCES BRANCH  
ASSESSMENT REPORT  
**8702**

Yak 2			
1895 (11)			
Silver Arsenic			
SCALE	DATE	DRAWN BY	DWG No.
1:5000		PC	
PREPARED BY Team Mineral Services Inc 1274 - 56th Street, Delta, B.C.			

Map 4.

Yak 2

5. 165	5. 225	5. 90	5. 200
5. 200	5. 205	10. 125	5. 200
Yak 5. 220	5. 185	5. 150	5. 140
5. 150	5. 120	10. 120	5. 220
5. 160	5. 115	15. 110	10. 120
5. 230	5. 190	5. 160	5. 190
5. 260	5. 140	5. 150	5. 180
5. 130	10. 160	5. 155	5. 1170
5. 210	5. 110	5. 200	10. 115
5. 190	5. 140	5. 170	5. 110
5. 240	5. 150	5. 85	10. 200
5. 175	10. 225	5. 170	5. 125
5. 140	5. 280	5. 100	10. 140
5. 430	5. 230	5. 70	5. 220
5. 265	5. 190	5. 95	15. 215
5. 160	5. 150	5. 85	30. 290
5. 145	5. 200	5. 130	10. 150
5. 360	5. 170	10. 140	5. 75
10. 240	5. 60	10. 280	10. 180
10. 55	5. 180	10. 115	5. 315
5. 190	5. 170	10. 300	10. 270
5. 270	5. 265	5. 110	5. 250
5. 140	5. 420	5. 150	5. 160
5. 100	5. 120	5. 175	5. 290
5. 100	5. 190	5. 140	5. 370
5. 230	5. 200	5. 165	5. 240
5. 480	5. 145	5. 100	5. 185
5. 190	5. 50	5. 150	5. 260
5. 230	5. 205	5. 90	5. 130
5. 50	5. 360	5. 60	5. 160
5. 80	5. 250	5. 120	5. 220
5. 135	5. 190	5. 75	5. 220
5. 150	5. 210	5. 300	5. 180
5. 80	5. 160	5. 150	5. 270
5. 100	5. 130	5. 250	5. 175
5. 145	5. 245	5. 180	5. 155
5. 80	5. 250	10. 220	5. 200
5. 100	5. 35	5. 180	NS.
5. 50	5. 220	5. 360	NS.
5. 140	25. 215	15. 190	NS.
5. 150	10. 200	5. 290	5. 280
5. 120	5. 130	5. 250	5. 140
5. 140	5. 205	25. 275	5. 160
5. 205	5. 215	5. 240	5. 175
5. 160	5. 125	15. 250	5. 60
5. 70	5. 195	5. 150	5. 40
5. 50	5. 105	5. 180	5. 200
5. 40	5. 290	5. 100	5. 165
5. 280	5. 280	5. 180	5. 175
5. 70	5. 135	5. 225	5. 290
5. 70	5. 155	5. 230	5. 230
5. 170	5. 205	5. 340	5. 190
5. 160	5. 325	15. 260	15. 110
5. 150	15. 250	10. 255	5. 90
5. 155	5. 100	15. 130	5. 75
5. 210	5. 305	5. 150	5. 430
5. 235	5. 160	5. 185	5. 170
5. 215	5. 170	5. 180	5. 120
5. 160	5. 130	10. 460	5. 220
15. 90	5. 100	10. 160	5. 90
10. 160	5. 100	20. 130	5. 65

Corner

Tasu

BL

5-280 Au. Hg pp.6

MINERAL RESOURCES BRANCH  
ASSESSMENT REPORT  
**8702**  
NO. \_\_\_\_\_

Easy

D'or



Yak 3  
1896 (11)  
Gold Mercury

SCALE	DATE	DRAWN BY	DWG No
1:5000		PC	

PREPARED BY Team Mineral Services Inc  
1274 - 56th Street, Delta, B.C.

Map 5

Yak 2

2.8	-1.13	1.5	1.5
3.7	-1.8	1.8	1.1
2.6	-1.10	1.6	1.5
3.11	-1.14	1.5	1.1
2.6	-4.7	1.7	1.2
3.5	-2.8	1.4	1.1
4.4	-1.4	1.6	1.1
2.4	-1.9	2.6	1.1
2.5	-2.2	3.2	1.1
2.2	-4.5	1.3	1.5
2.3	-1.9	1.4	1.1
1.1	-1.8	1.5	1.9
1.5	-1.10	1.3	1.3
2.39	-1.9	1.10	1.1
2.1	-1.11	1.4	1.1
2.6	-2.5	1.5	2.6
3.5	-1.8	1.7	1.6
10.4	-1.6	1.8	1.5
1.6	-2.4	1.9	2.4
2.6	-5.3	1.5	2.5
1.10	-4.4	1.7	1.7
4.1	-1.13	1.6	2.8
2.2	-3.9	1.8	1.8
2.6	-1.11	2.7	2.8
2.6	-1.12	1.6	3.11
2.5	-1.12	1.3	7.2
2.2	-1.7	1.5	1.6
3.6	-1.9	1.6	4.5
5.2	-2.7	1.4	2.7
2.2	-6.5	1.2	1.8
2.3	-1.8	1.4	2.8
2.3	-2.7	1.2	2.7
2.2	-1.11	4.4	2.3
2.3	-3.8	2.5	3.7
3.5	-1.8	1.6	1.6
2.7	-4.6	1.11	2.8
1.2	-2.10	1.11	1.7
2.5	-3.4	1.8	NS
3.4	-1.5	1.5	NS
3.1	-1.11	3.8	NS
4.3	-1.10	1.10	3.3
4.7	-1.7	1.9	1.4
2.2	-1.10	1.7	1.6
5.2	-1.12	1.9	1.3
5.9	-1.8	1.9	1.2
4.7	-1.8	1.7	1.2
2.4	-4.6	1.10	1.7
1.2	-1.11	1.7	1.7
4.10	-2.11	1.8	1.3
2.5	-3.11	1.9	1.6
4.4	-1.9	1.12	1.8
3.11	-2.10	3.6	1.8
3.10	-2.8	1.8	1.8
2.2	-7.8	2.7	1.7
1.4	-2.4	1.6	1.9
3.3	-1.11	2.9	7.3
3.6	-2.7	1.13	1.6
1.6	-2.3	2.10	1.4
2.2	-1.8	4.6	1.5
1.1	-2.5	1.20	2.4
2.2	-2.4	1.6	2.4

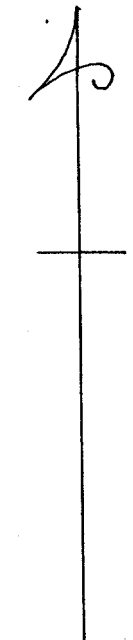
Corner

Tasu

BL

Easy

D'or



4.10 Ag As ppm

MINERAL RESOURCES BRANCH  
ASSESSMENT REPORT  
**8702**  
NO.

Yak 3  
1896 (11)  
Silver Arsenic

SCALE	DATE	DRAWN BY	DWG No
1:5000		P.C.	

PREPARED BY Team Mineral Services Inc  
1274 56th Street, Delta, B.C.

Map 6