

Geochemical Assessment Report

on the

Leslie 1 to 5 and Paw 5 to 8 Mineral Claims
located some 7 air km
East of Yale, B. C.

at the

Main Forks of Siwash Creek

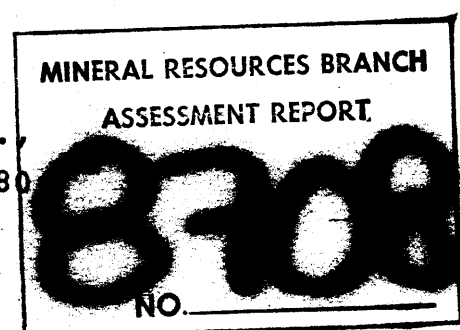
New Westminster Mining Division

Latitude 49°35'N., Longitude 121°21'W

and owned by

R. B. Pincombe and E. N. Ascroft

Field Work by
AQUARIUS RESOURCES LTD.,
July 1, to July 15, 1980



Report by:

Robert Wolfe, P. Eng.,
Delta, B. C.,
December 10, 1980.



Cochrane Consultants Limited
4882 Delta St., Delta, B.C. V4K 2T8 946-8221
Geotechnical Consulting / Exploration Services

geology
geophysics
geochemistry

TABLE OF CONTENTS

	Page
A. INTRODUCTION	1
B. LOCATION AND ACCESS	2
C. CLAIMS INFORMATION	3
D. GENERAL SETTING	4
E. PREVIOUS WORK	5
F. FIELD PROCEDURES	6
G. RESULTS OBTAINED	8

FIGURES

1.	Location Map	Report body
2.	Claims Map	" "
3.	Geochemical Data	Map Pocket

APPENDICES

I	Assessment Work Details
II	Certificate



A. INTRODUCTION

During the first two weeks of July, 1980, a field crew, working out of the Siwash Arms base camp, completed a "fill in" soil sampling survey over the Leslie and Paw claims grid as part of the larger Coquihalla Gold Belt exploration program of Aquarius Resources Ltd.

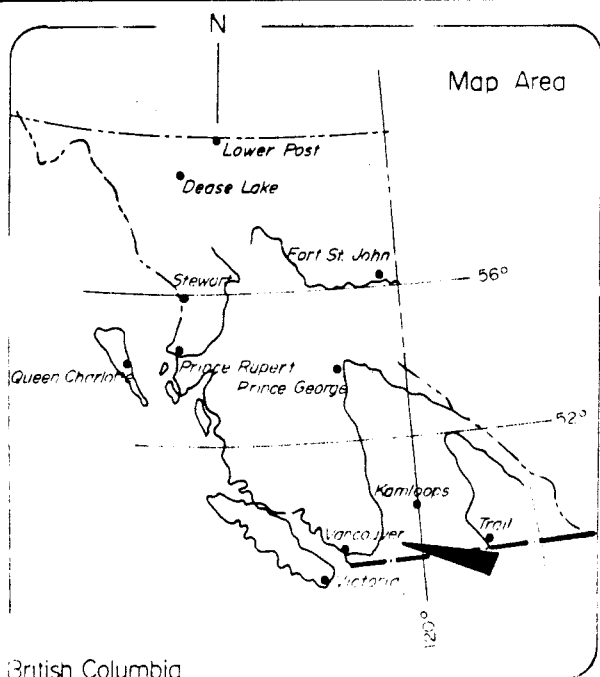
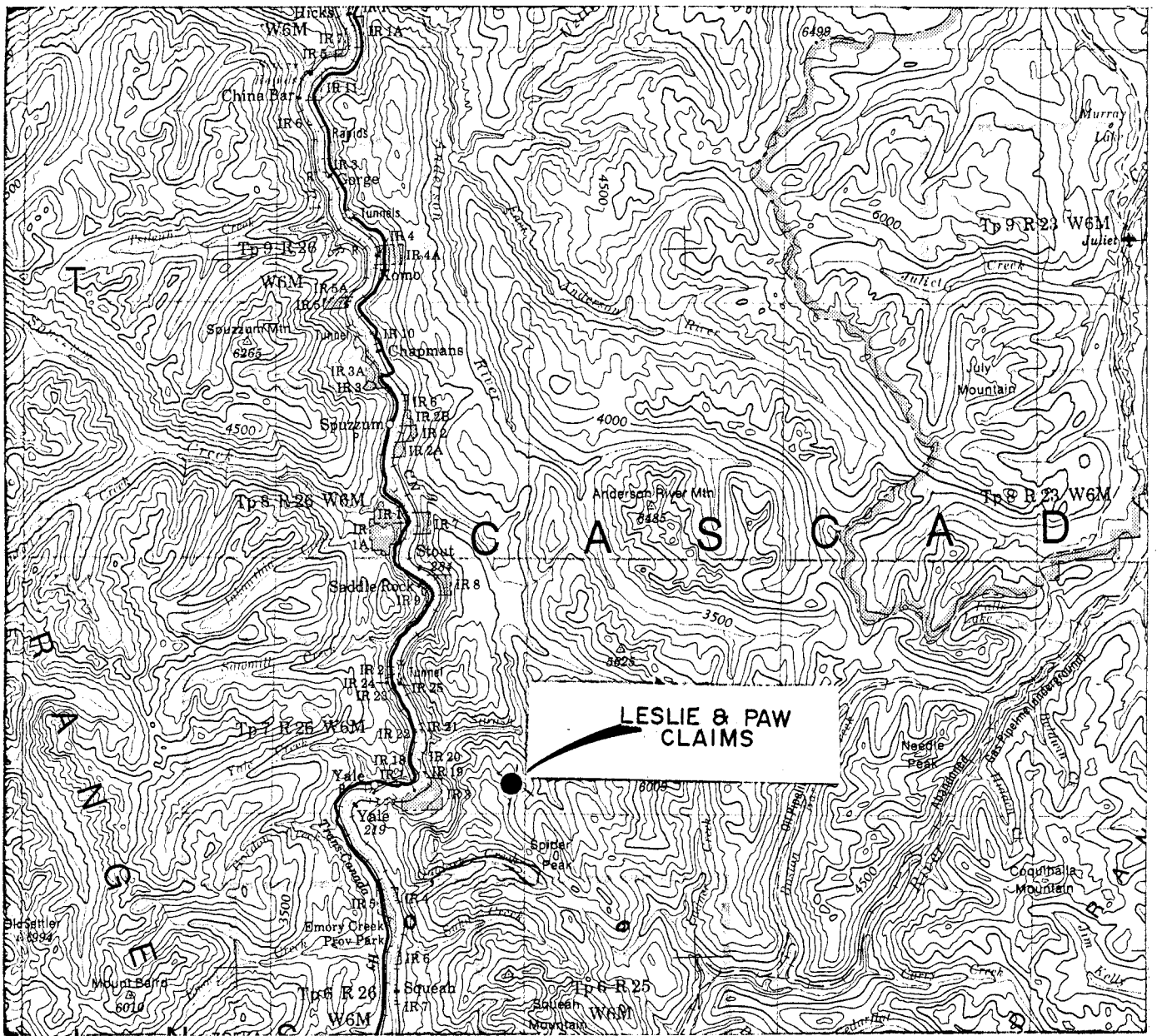
This report describes procedures, work done, and is submitted for assessment work credits which are outlined in Appendix I at the back of this report.



B. LOCATION AND ACCESS

The Leslie and Paw mineral claims are located at the confluence of the North, Middle and South Forks of Siwash Creek, some 7 air km east of Yale, B. C. Four wheel drive access to the claims is via Spuzzum, B. C., entering the Gilt Creek logging road on the east side of the Fraser River/Alexandra Bridge, thence 15 km southerly on the Siwash Creek logging road to the Forks of Siwash Creek. A seven trailer base camp (Siwash Arms) is located 3.5 km north of the claims. Latitude is 49°32'N., and longitude is 121°21'W.



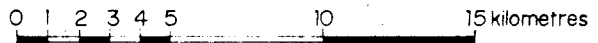


AQUARIUS RESOURCES LTD.

**LESLIE AND PAW CLAIMS
SIWASH CREEK AREA N.T.S. 92H/11W.
NEW WESTMINSTER MINING DIVISION**

Figure 1
Location Map

Scale: 1 to 250,000 or 1 inch equals approx. 4 miles.



British Columbia
CANADA

D.L. DEC '80

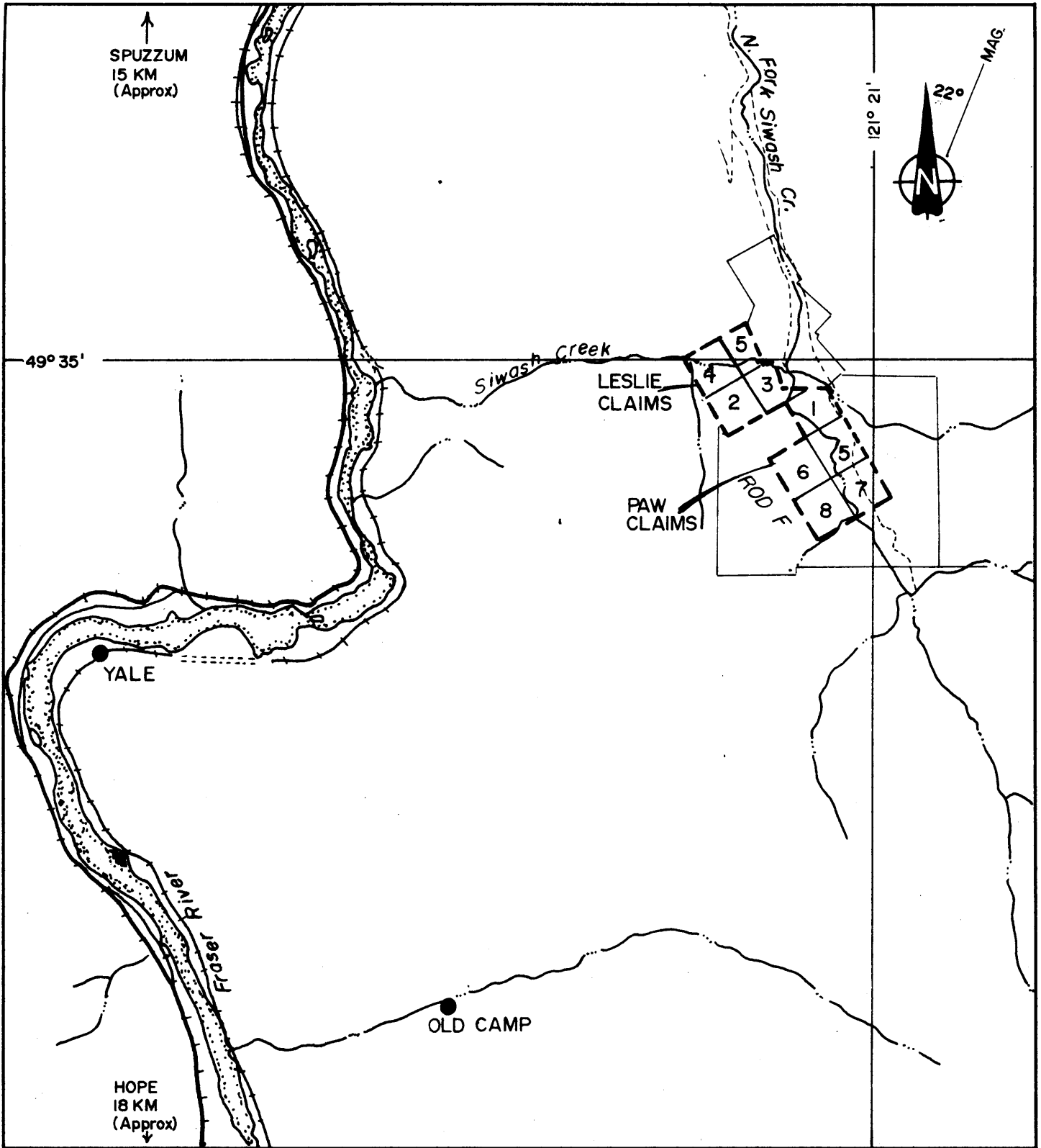
Cochrane Consultants Limited
444 - 10th St. Suite 210 - Vancouver, B.C. V6Z 2Z7

C. CLAIMS INFORMATION

The Leslie 1 to 5, and Paw 5 to 8, old two post mineral claims are owned by R. B. Pincombe and E. N. Ascroft and are located in the New Westminster Mining Division. Work on the claims (by agreement) was by Aquarius Resources Ltd., of Vancouver, B. C. See table below for detailed information.

CLAIM NAME	RECORD NUMBER	ANNIVERSARY DATE	EXPIRY DATE	
			Before Credits	After Credits
Leslie 1	24347	September 3	1981	1984
Leslie 2	24348	September 3	1981	1984
Leslie 3	24349	September 3	1981	1984
Leslie 4	24350	September 3	1981	1984
Leslie 5	24351	September 3	1981	1984
Paw 5	28152	September 21	1981	1984
Paw 6	28153	September 21	1981	1984
Paw 7	28154	September 21	1981	1984
Paw 8	28155	September 21	1981	1984





AQUARIUS RESOURCES LTD.

LESLIE & PAW CLAIMS
SIWASH CREEK AREA N.T.S. 92H/11 W.
NEW WESTMINSTER MINING DIVISION

FIGURE 2
Claims Map

Scale 1:50,000

0 0.5 1 2 3 kilometres

0 0.5 1 2 miles

D.L. Dec '80



Cochrane Consultants Limited
4602 Dolan St., Delta, B.C. V4L 2T8 949-0221

D. GENERAL SETTING

The Leslie and Paw mineral claims are situated in the Northern Cascade Mountain Range and particularly on a heavily forested north northeast facing slope. The east side of the claims area is drained by the South Fork of Siwash Creek, a tributary of the Fraser River. Elevations range from 400 m on the north end of the claims to over 1500 m on the south corner.

The Leslie and Paw claims straddle the Coquihalla Serpentine band and Hozameen Fault which marks the west boundary of the Methow Graben, a major crustal feature separating Upper Jurassic Ladner Group slates on the east from Paleozoic Hozameen Group cherts and metavolcanic rocks on the west. The grabben structure runs from Northern Washington State to Boston Bar, B.C., a distance of over 200 kilometres.

This major feature is also the central axis of a series of gold occurrences which include five former producers and the Carolin Mine some 8 km to the south southwest and due in production in the second quarter of 1981.



E. PREVIOUS WORK

Work has proceeded from prospecting, geochemical soil sampling and stream sediment sampling initiated in 1976, to topographic and grid control and soil sampling on a reconnaissance level (1:5000) covering most of the claims by 1979. This years work was basically "fill-in" soil sampling work to further define and/or close last years geochemical anomalies.



F. FIELD PROCEDURES

Two teams of two fieldpersons were employed, one person compassing and cutting, and one collecting soil samples. Tie line 9 W. was cut and from this lines 8 S., and 9 S., were cut and sampled. The following lines were extended to or just beyond the western claim boundary: lines 10 S. to 15 S. inclusive, line 8+75 S. and lines 21 S. and 22 S.

All soil samples were collected, using hand tools, from the "B" soil horizon. Samples were placed in grid numbered kraft paper bags, air dried at the Siwash Arms camp, then boxed and shipped to Min-En Labs Ltd., of North Vancouver, by four wheel drive truck.

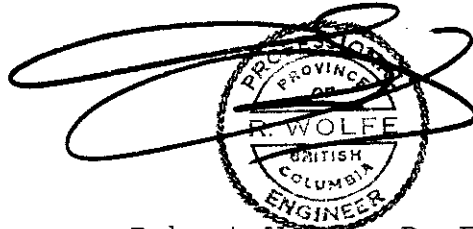
The samples were analyzed for gold by aqua regia extraction and Atomic Adsorption technique and reported in parts per billion. Results were mailed to Cochrane Consultants' office, in Delta, B. C., and plotted, with the aid of field notes and maps, at a scale of 1:5000.



G. RESULTS OBTAINED

A total of 284 samples were collected on the Leslie and Paw "fill-in" grid and analysed for gold. Results ranged from a low of less than five parts per billion (p.p.b.) or below detection limits to 2100 p.p.b. Au located on line 14 S., station 9 W. The arithmetic mean of 97 random samples was 41.2 p.p.b. Au. Results are plotted on Figure 3.

Respectfully submitted,



Robert Wolfe, P. Eng.

December 10, 1980,

Delta, B. C.



APPENDIX I

ASSESSMENT WORK DETAILS

Soil Sampler, July 1-15, 1980, 4 days at \$120/day	\$ 480.00
Helper, July 1-15, 1980, 4 days at \$100/day	400.00
Soil Sampler, July 1-15, 1980, 4 days at \$120/day	480.00
Helper, July 1-15, 1980, 4 days at \$100/day	400.00
Robert Wolfe, P. Eng 1 day at \$300/day	300.00
Geochemical Analysis, 284 samples at \$84.85	1,377.40
Camp Costs, 16 man days at \$22.50/manday	360.00
4 x 4 vehicle, (1) 4 days at \$27.50/day.....	110.00
(2) 4 days at \$27.50/day	110.00
Mileage - 934 miles at \$0.30/mi	280.20
Field supplies	176.65
Drafting - 41.5 hours at \$18.50/hour	767.75
Typing - 6.5 hours at \$12/hour	78.00
Reproduction, binding, collating	<u>120.00</u>
TOTAL	\$5,440.00

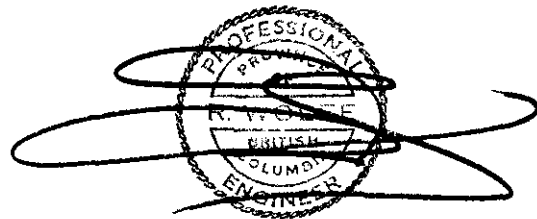


APPENDIX II

CERTIFICATE

I, Robert Wolfe, of the Municipality of Maple Ridge, British Columbia, do hereby certify that:

1. I am a consulting geological engineer with an office at 4882 Delta Street, Delta, B. C. V4K 2T8
2. I am a graduate of the University of Alberta, (1963) with a degree in Geology and Physics (B.Sc.). I also took an extra year of Geology at the University of British Columbia, in 1963-64.
3. I have practiced my profession since 1964, while being employed by such companies as KennCo (Western) Exploration, Meridian Exploration Syndicate, (Canex Aerial Exploration Ltd., Noranda Mines Ltd., Home Oil Co.), Orequest Syndicate (Granby Mining Co., Home Oil Co., Homestake Silver Mines.). I have been in private independent practice since 1968.
4. I have no interest, either direct or indirect in the properties or securities of Aquarius Resources Ltd., nor do I expect to receive or acquire any such interest.
5. I have been a member in good standing of the Association of Professional Engineers of the province of British Columbia since 1967.



Robert Wolfe, P. Eng.,
December 10, 1980,
Delta, B. C.



