



GRANGES EXPLORATION AB
CANADIAN DIVISION

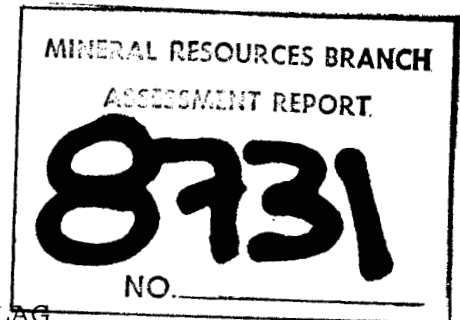
DIAMOND DRILL REPORT
ON THE
G, H and I CLAIM BLOCKS

LOCATED IN THE
OMINECA MINING DIVISION
FAWNIE NOSE AREA

LATITUDE: 53° 17'
LONGITUDE: 125° 10'

NTS 93F 6E

OWNER AND OPERATOR
GRANGES EXPLORATION AKTIEBOLAG
1110 - 625 HOWE STREET
VANCOUVER, B. C.
V6C 2T6



Date of Work: September 12 to September 15, 1980

Dated at Vancouver:
December 10, 1980

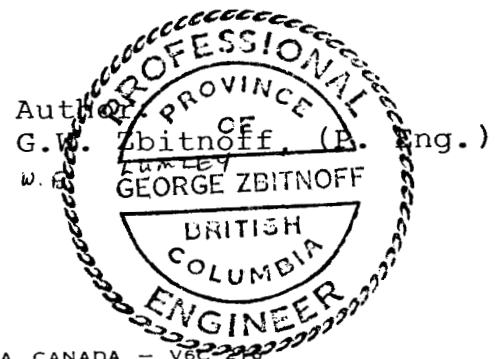


TABLE OF CONTENTS

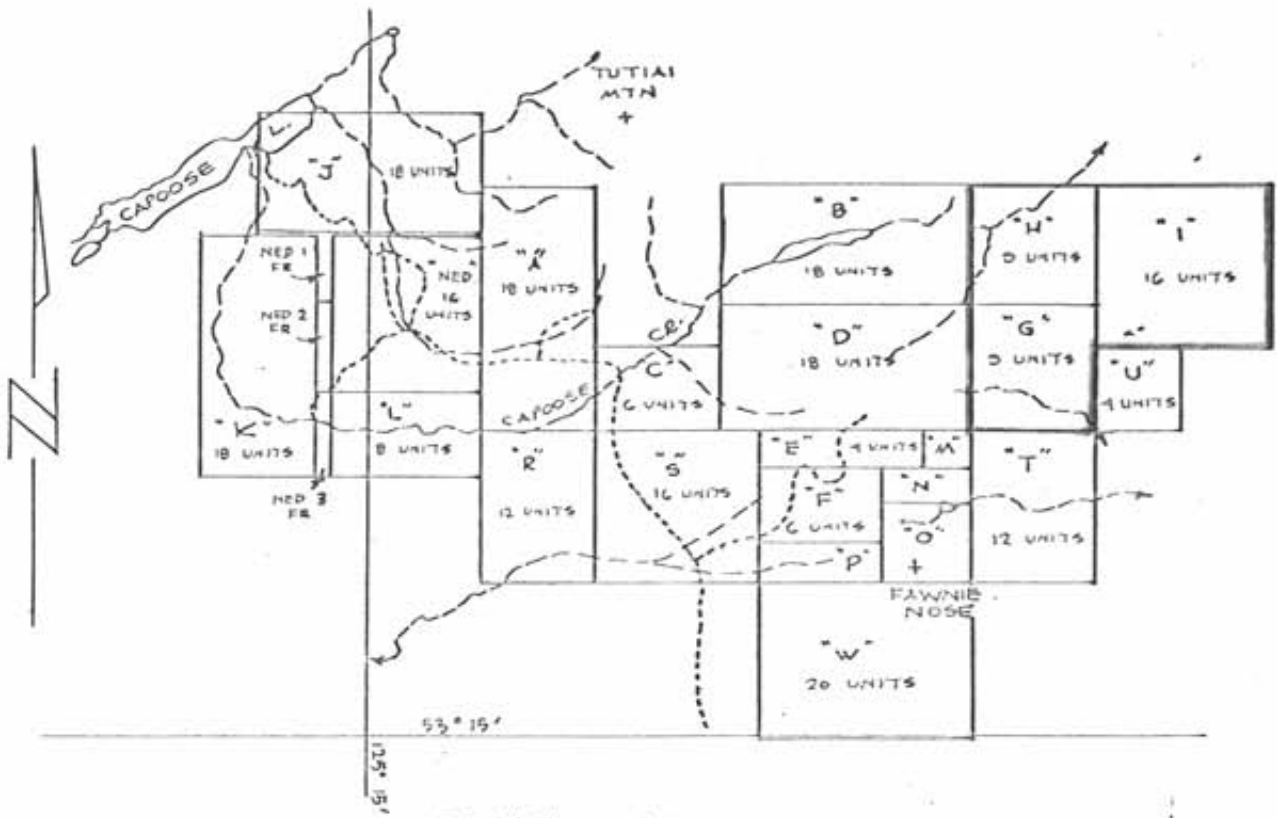
Location Map	front
Introduction	1
Claims	1
Location and Access	1
Description of Program and Results	2
Recommendations	2
Expenditures	2
Author's Qualifications	3
Co-Author's Qualifications.....	4

ENCLOSURES

Diamond drill logs and record sheets for
diamond drill hole G 1-80.

Map showing drill hole location.

Scale: 1:2500

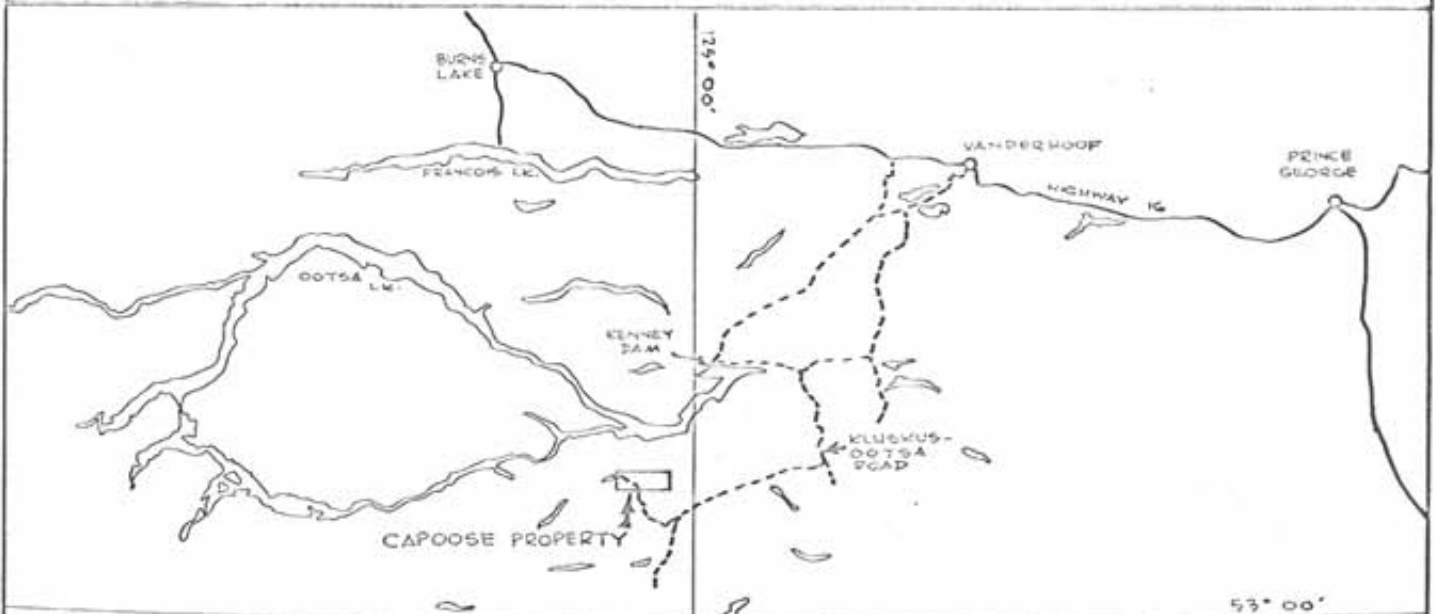


CLAIM MAP

SCALE 1:100,000



NTS. NO 53 F-C



LOCATION MAP

SCALE 1:1,000,000



INTRODUCTION

A diamond drill hole was sunk on the "G", "H" and "I" claim group to investigate the Au/Ag geochemical anomaly detected in soil sampling in the 1977 field season. D.W. Coates Enterprises was contracted to drill under the supervision of W. Lumley, geologist for Granges Exploration Aktiebolag, Vancouver, B. C.

CLAIMS

Work was carried out on the "G", "H" and "I" claim group consisting of a total of 34 units, with a recording date of July 4, 1977.

LOCATION AND ACCESS

The "G", "H" and "I" claims are located approximately 467 km north north-west of Vancouver, B. C. They lie on the eastern flank of the Fawnie Range, approximately 1.7 km north north-east of the Fawnie Nose Mountain.

A major portion of the claims lie in swampy lowlands to the east of the Fawnie Range. Vegetation is Scrub Pine and Black Spruce. Drilling was located on top of a topographic rise approximately 1.5 km east of the main camp at an elevation of 1684 m.

Access to the "G", "H" and "I" group was from Vanderhoof via Plateau Mills, Kluskus-Ootsa forest road for 142.3 km to the junction of the Granges Capoose Lake road where equipment was offloaded and transported to the site by helicopter.

DESCRIPTION OF PROGRAM AND RESULTS

The purpose of this program was to test for the source of the geochemical Au/Ag anomalies located in the 1977 field season. Mobilization commenced from the main camp September 12, 1980 and terminated September 15, 1980 with one hole being drilled to a depth of 147.82 m.

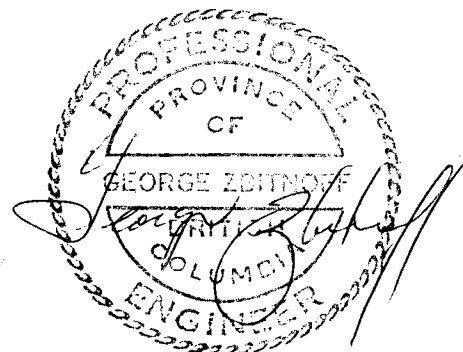
The hole was collared and remained in maroon to dark green andesite breccias of possibly the Hazelton or Kingsville group of the mid Jurassic or upper cretaceous. The entire hole was barren. Logs and drill records of the hole is appended within. Drill core is stored at the main Capoose project campsite 1.5 kilometers north of Fawnie Nose.

RECOMMENDATIONS

The "G, "H" and "I" claim group should ^{be} mapped on a reconnaissance scale of 1:5000 to ascertain geology, structure and economic potential of the area.

EXPENDITURES

Drilling Costs	\$10,758.51
<u>Personel</u>	
W. Lumley, project geologist	338.52
Maps and Reports	604.40
E. Lumley	15.00
Assays	65.00
TOTAL	<u>\$11,781.43</u>



STATEMENT OF QUALIFICATIONS

Name: Zbitnoff, George Wm.

Profession: Geologist

Professional

Associations: Member of the Association of Professional Engineers of the Province of Manitoba since 1969.

Member of the Association of Professional Engineers of the Province of British Columbia since 1973.

Experience: Pre graduation experience in geology with the Department of Mineral Resources.

Two and one half years, field geologist with Hudson Bay Exploration and Development, Central Canada.

Six years, field and Resident Geologist with Noranda Exploration Ltd., Central Canada.

Nine years geologist and Assistant Manager with Granges Exploration Aktiebolag, Canadian Division.

Active experience in all geologic provinces of Canada and parts of the United States and Mexico.



STATEMENT OF CO-AUTHOR'S QUALIFICATIONS

NAME	William Ernest Lumley
PROFESSION	Project Geologist
EDUCATION	B. Sc. (Geology) University of Waterloo (1974)
EXPERIENCE	1 year Exploration Geologist-Getty Mines Ltd. 2 years Exploration Geologist-Eldorado Nuclear Ltd.. 4 years Exploration & Project Geologist with various companies in British Columbia. June 1980 Present Project Geologist with Granges Exploration AB

William E. Lumley

William E. Lumley.
April 13, 1981.

WL/jr
Encls.

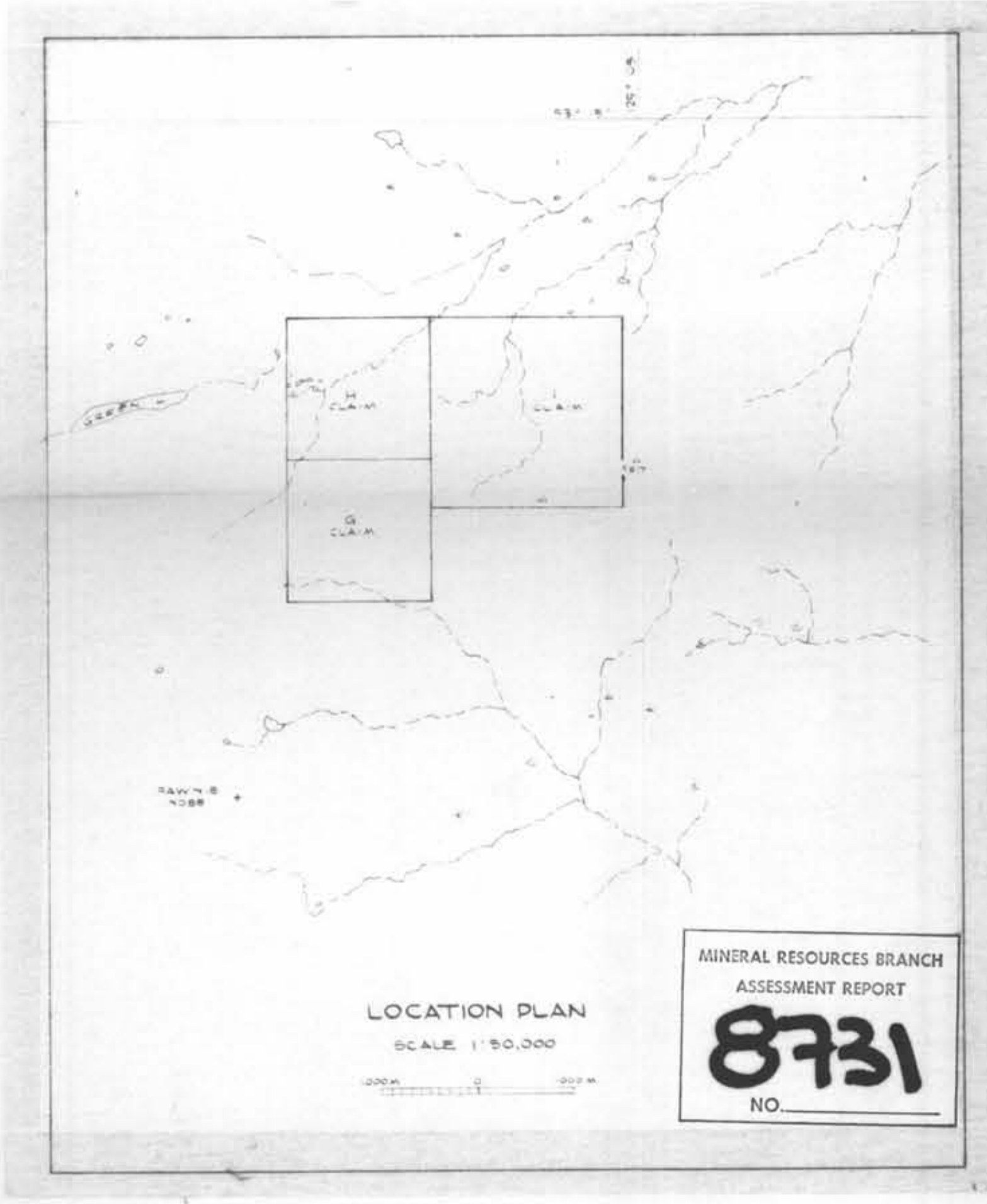
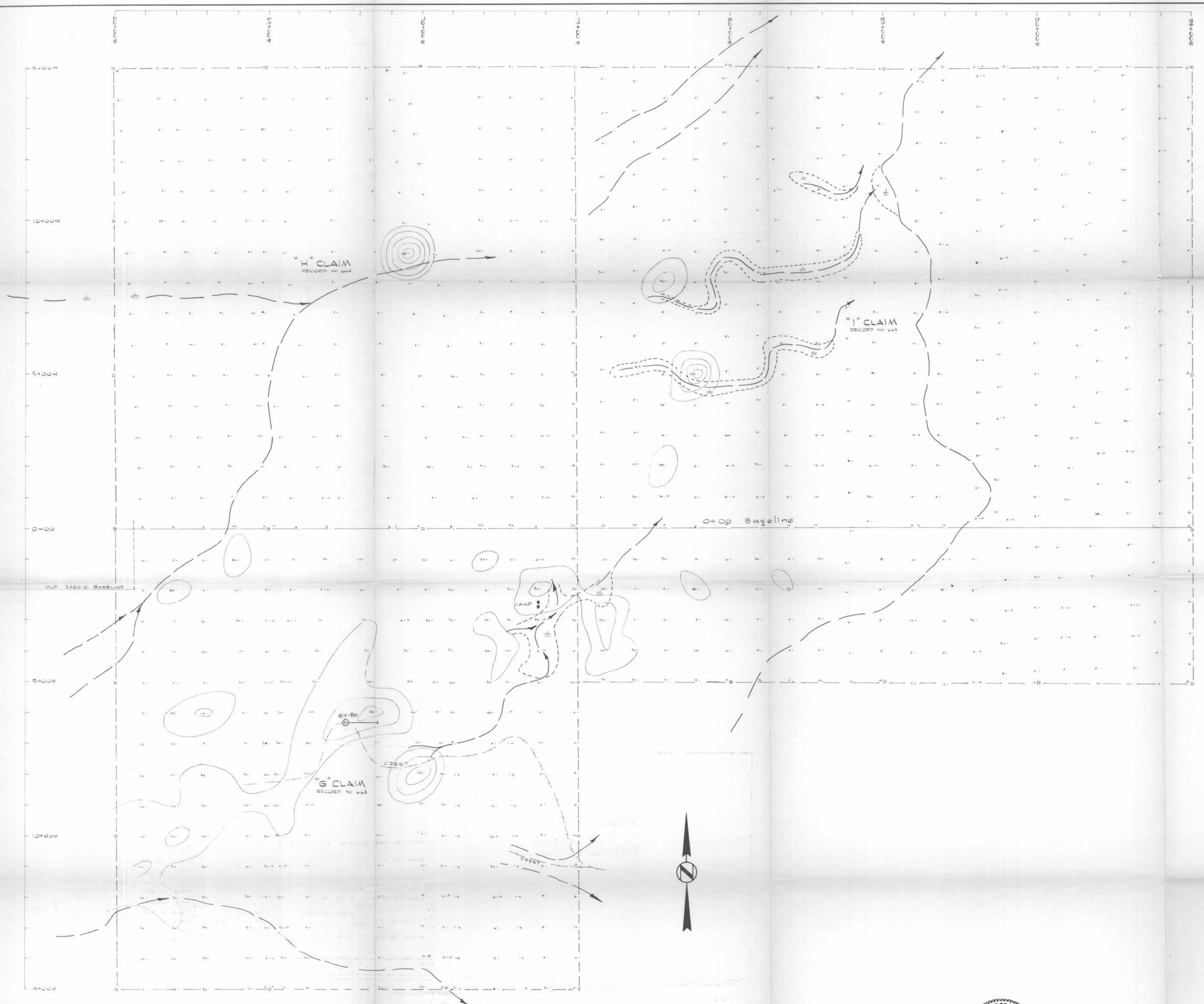


GRANGES EXPLORATION AB
CANADIAN DIVISION
DIAMOND DRILL LOG

Property .. CAPOOSE Project No. 70113 Depth 485' (147.83M) Date Began .. SEPTEMBER 13, 1980 ..
Hole No. DDH-G-1-80 Co ord. ... 12+00E. Horizontal Length 336.86' (102.67) Date Completed .. SEPTEMBER 15, 1980 ..
Sheet No. ... 1 OF 2 10+25N Direction .. 090° Drilled By. ... D. W. COATES
Claim No. Elevation .. 1684 Angle .. -45° Logged By. W. E. LUMLEY
William E. Lumley

FOOTAGE Metres	DESCRIPTION	ALTERATION												
		FROM	TO								REC'D CALC'D.			
0 - 1.22	CASING													
1.22 - 156.79	Reddish black, maroon & green volcanic breccia-this unit was described in Tipper's Report on the geology of the Nechako Sheet as in the Hazelton unit of the Middle Jurassic. The unit ranges from an andesite porphyry to andesite breccia, with the breccia as the predominant rock type. Both units are very similar in composition containing a large amount of calcite both as blebs & whisps and as fracture fillings up to 5% of the rock volume. Green breccia is common but not prevalent occurring in random sections. This unit appears coarser grained-maroon andesite is generally aphanitic & siliceous. ENTIRE UNIT IS BARREN													
1.22-16.15	red black andesite porphyry-rich in calcite-5%.													
16.15-18.84	maroon andesite-minor calcite fractures.													
18.84-29.67	red black andesite porphyry with some andesite fragments.													
29.67-30.39	maroon andesite - minor calcite.													
30.39-32.15	red black andesite breccia.													
32.15-32.47	green andesite breccia.													
32.47-34.40	greenish black andesite breccia calcite rich-5%.													
34.40-39.41	maroon andesite breccia-no calcite.													
39.41-45.22	green andesite breccia-minor calcite.													
45.22-47.35	greenish black calcite rich andesite breccia.													
47.35-51.60	as above 34.40-39.41.													
51.60-52.34	as above 39.41-45.22.													
52.34-60.30	as above 45.22-47.35.													
60.30-61.35	transition-red green andesite breccia.													
61.35-74.68	maroon andesite.													
74.68-77.86	as above 60.30-61.35.													
77.86-78.08	as above 39.41-45.22.													
78.08-85.15	as above 60.30-61.35.													
85.15-85.58	fault gouge & breccia.													
85.58-108.25	dark maroon breccia.													
108.25-108.67	green andesite breccia.													

MINERAL RESOURCES BRANCH
ASSESSMENT REPORT
8731
NO.



MINERAL RESOURCES BRANCH
ASSESSMENT REPORT
8731
NO.



DIAMOND DRILL HOLE

100m	200m	300m	DRAWN BY: M.P.
LOCATED CLAIM POINT	CLAIM BOUNDARY LINE	OUTLINE OF ANOMALOUS AREA	DATE: AUG 1977
			AUG 1977

GRANGES EXPLORATION AB
CANADIAN DIVISION
VANCOUVER OFFICE

GOL GEOCHEMICAL SURVEY FOR GOLD ON CLAIMS "G" (648), "H" (648) & "I" (648) CAPOOSE JOINT VENTURE CAPOOSE LAKE AREA, B.C.

SCALE: 1:50,000
PROJECT No: 70118
N.T.S. No: 33 E - 6