

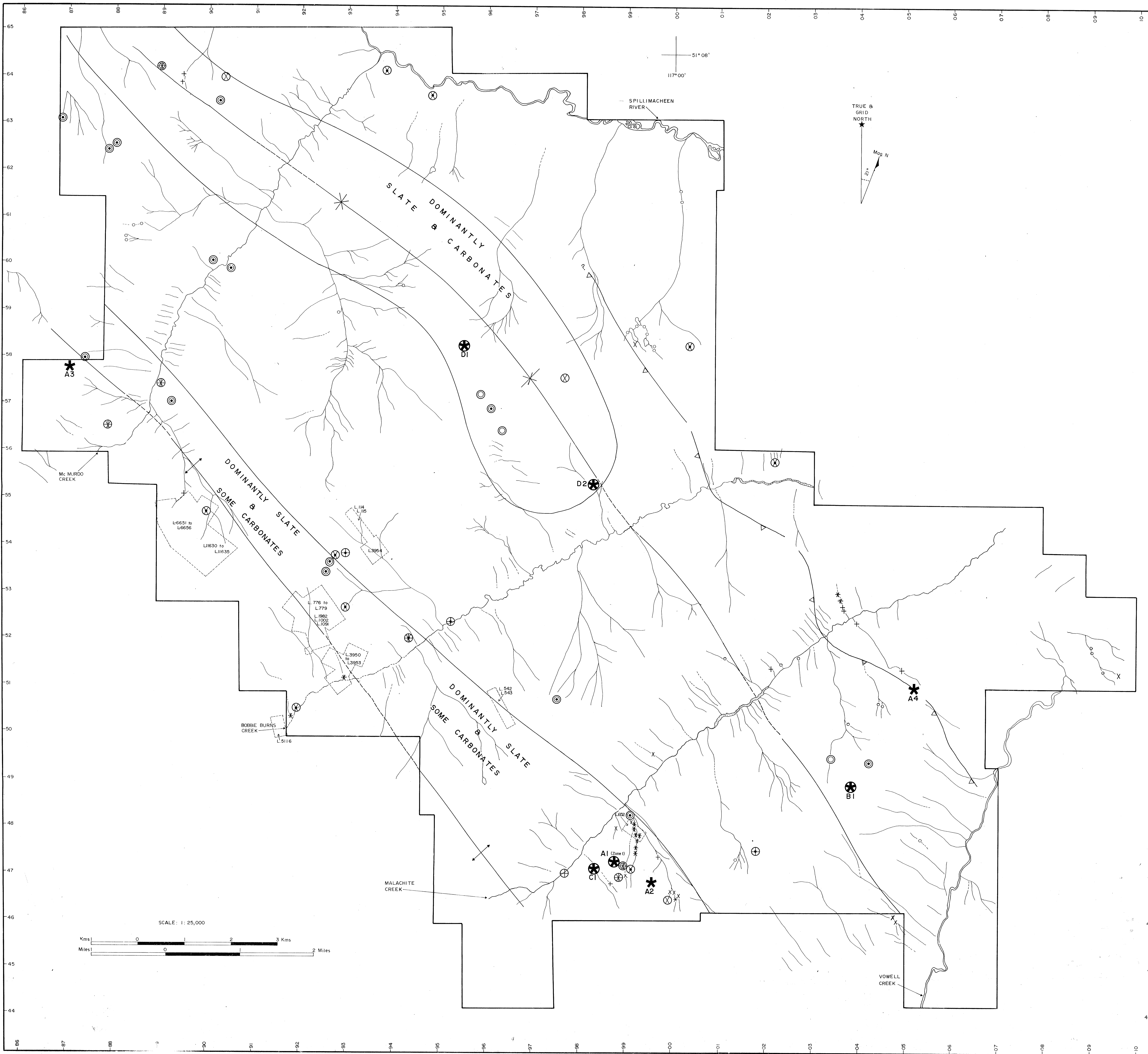
~~80-4876~~ #8733

Drawings to Accompany
REPORT ON GEOLOGICAL, GEOCHEMICAL AND PROSPECTING SURVEYS
Conducted on the
DEB 1 to DEB 80 CLAIMS
In The
GOLDEN MINING DIVISION
NTS: 82K14W, 82K15E, 82N2W, 82N3E
Latitude 51°00', Longitude 117°00'
Claims Owned and Operated by
FIRST NUCLEAR CORPORATION

Report by: John A. Brophy (BSc)

December 18, 1980

8733
PART
2 OF 2



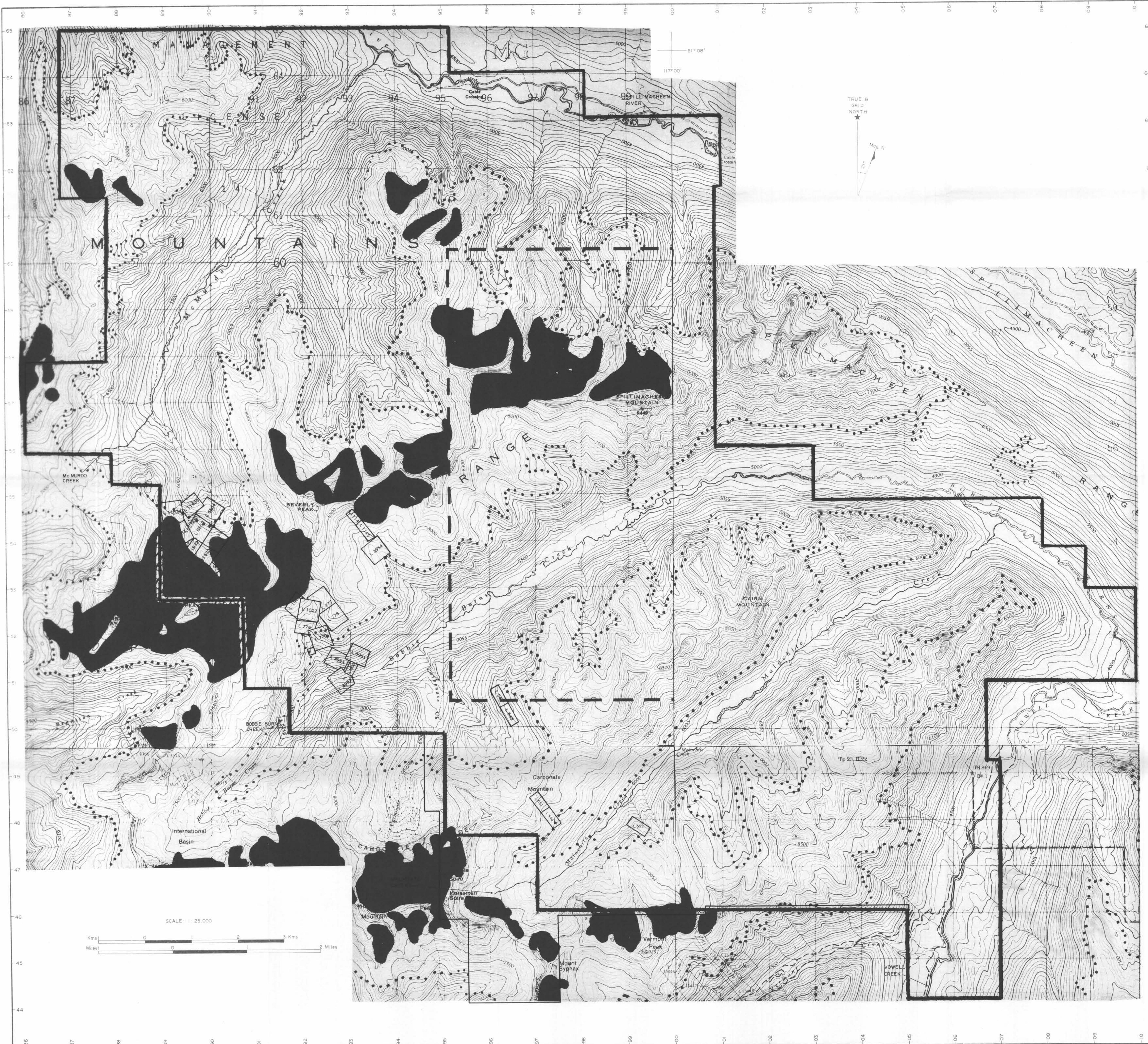
LEGEND

- TOP 2 1/2%ile ANOMALIES IN STREAM SEDIMENTS**
- Cu ≥ 78 ppm
 - ⊕ Pb ≥ 112 ppm
 - ⊗ Zn ≥ 178 ppm
- TOP 2 1/2%ile ANOMALIES IN ROCK IN CARBONATE**
- ⊙ Cu ≥ 105 ppm
 - ⊕ Pb ≥ 1600 ppm
 - ⊗ Zn ≥ 1500 ppm
- IN SLATE**
- ⊙ Cu ≥ 158 ppm
 - ⊕ Pb ≥ 2400 ppm
 - ⊗ Zn ≥ 580 ppm
- ⊗ MAIN MINERALIZED SHOWINGS (refer to report)
- ⊕ OCCURRENCE OF Pb & Zn in CARBONATE FLOAT
- ⊗ APPROXIMATE AXIS OF ANTICLINORIAL STRUCTURE
- ⊗ APPROXIMATE AXIS OF SYNCLINORIAL STRUCTURE
- ▲ REVERSE OR THRUST FAULT (teeth in direction of dip)
- APPROXIMATE CONTACT OF SLATE BELTS
- L. 5116 CROWN GRANT CLAIM & LICENSE NUMBER

MINERAL RESOURCES BRANCH
8733
PAGE

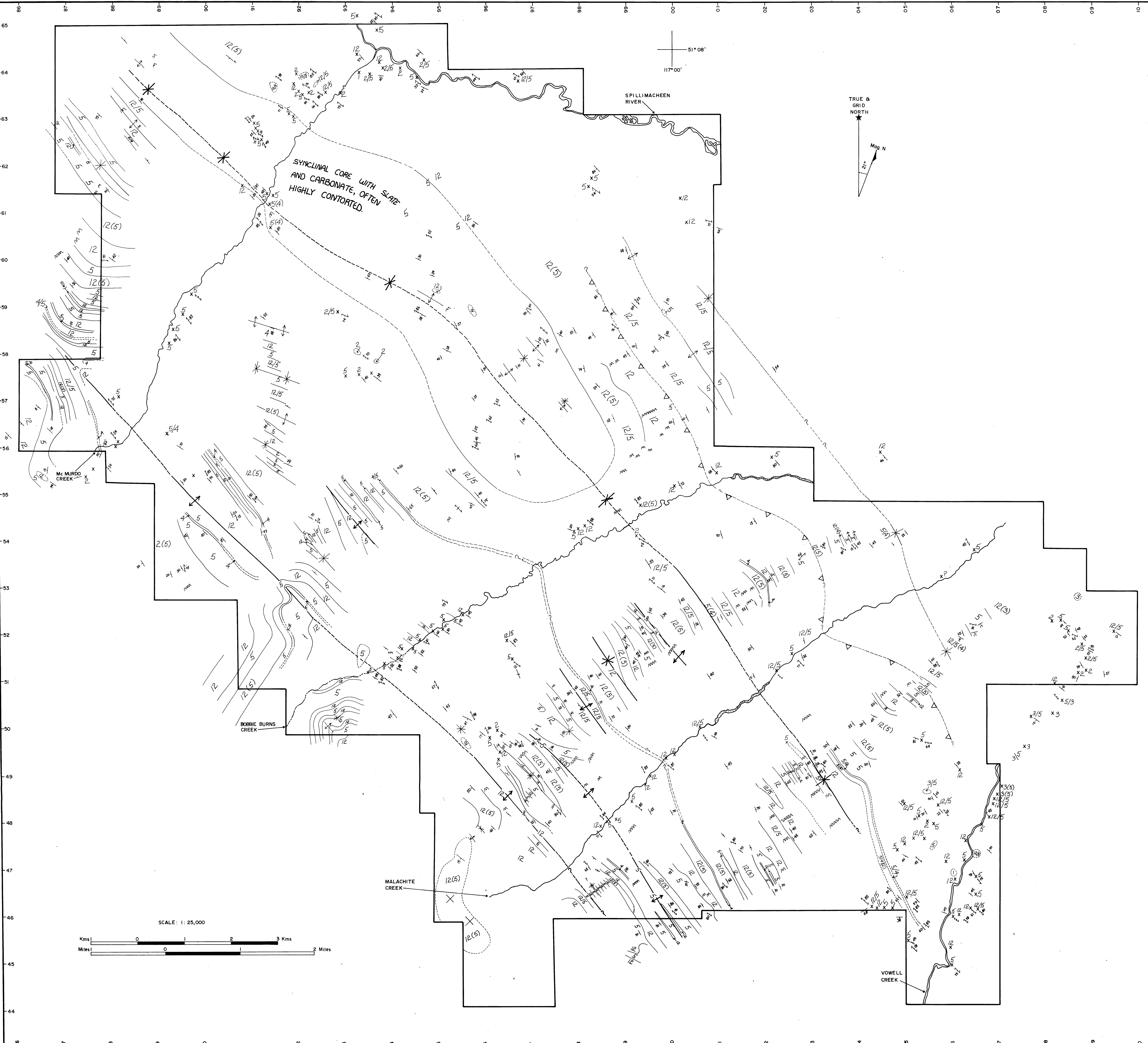
FIRST NUCLEAR CORPORATION
 PROJECT: 2480 DEB CLAIM GROUP
 Exploration Highlights Map

DWG. NO. 1 SCALE: 1:25,000 DRAWN BY: pmv
 N.T.S. 82K14E, 15W DATE: 12/80 CHECKED BY: jpb



8733
part 2
OP 2

MINERAL RESOURCES BRANCH
FIRST NUCLEAR CORPORATION
 PROJECT: 2480 DEB CLAIM GROUP
 SHOWING PROPERTY TOPOGRAPHY, LOCATION OF
 CROWN GRANT CLAIMS & GLACIERS
 DWG NO. 2 SCALE: 1:25,000 DRAWN BY: pmv
 N.T.S.: 82N 3E, 2W DATE: OCT. 80 CHECKED BY: JB



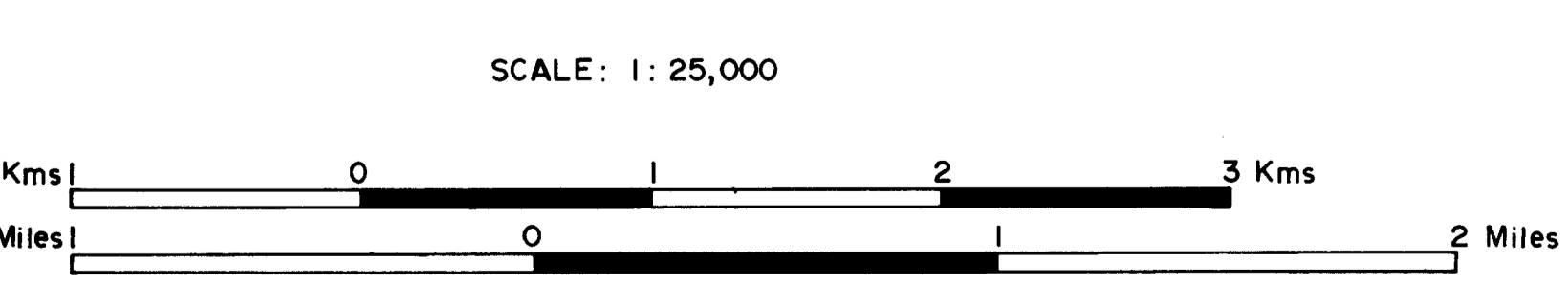
Legend

- H 1 Quartz pabble conglomerate
- A 2 Grit
- D 3 Quartzite
- R 4 Carbonate
- Y 5 Slate
- N
- I
- A
- N

NOTES:

- i. A virgule is used to denote a well interbedded succession of two (or more) units. E.g. 2/5 (interbedded grit and slate)
- ii. Parentheses are used to denote well interbedded successions the unit within parentheses is a minor component. E.g. 2(5) (grit with minor slate interbeds).
- iii. Grouping of units is used to denote gradational relationships. E.g. 25 (gritty slate), 12 (conglomerate and grit).

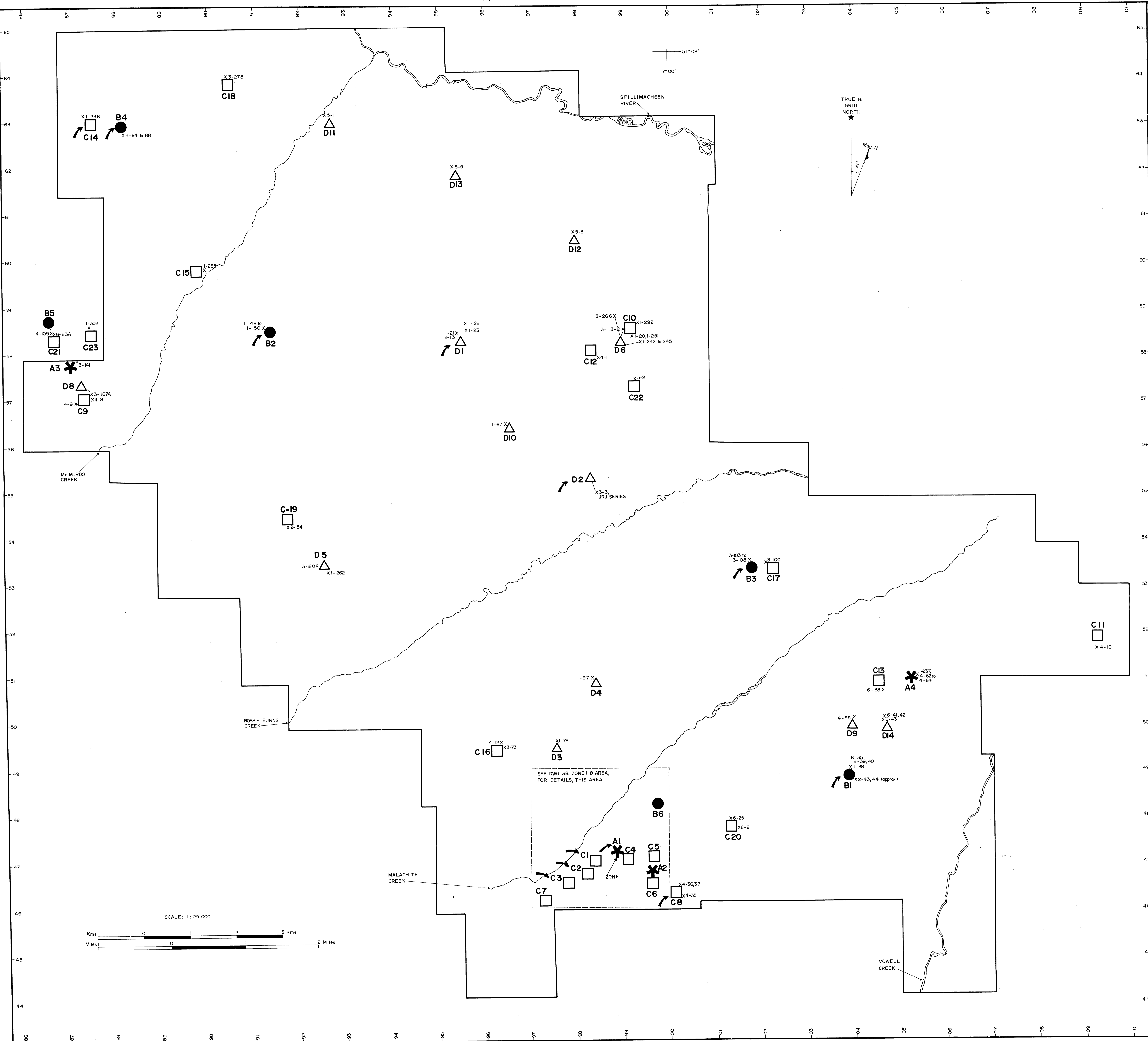
- Outcrop area
- x Isolated outcrop
- /— Strike and dip of bedding (inclined, vertical, horizontal)
- /— Strike and dip of cleavage (inclined, vertical, horizontal)
- Axis of major synclinal structure (approximate, assumed)
- Axis of major anticlinal structure (approximate, assumed)
- Axis of minor synclinal structure (approximate, assumed)
- Axis of minor anticlinal structure (approximate, assumed)
- ~~~~~ Drag-folded area
- Geological contact (approximate, assumed)
- △ Reverse (?) fault, (teeth in direction of dip)



MINERAL RESOURCES BRANCH
8733
PAGE 2

FIRST NUCLEAR CORPORATION
 PROJECT: 2480 DEB CLAIM GROUP
 GEOLOGICAL MAP

DWG. NO. 3 SCALE: 1:25,000 DRAWN BY: pmv
 N.T.S. 82K 14E, 15W DATE: 12/80 CHECKED BY: jh

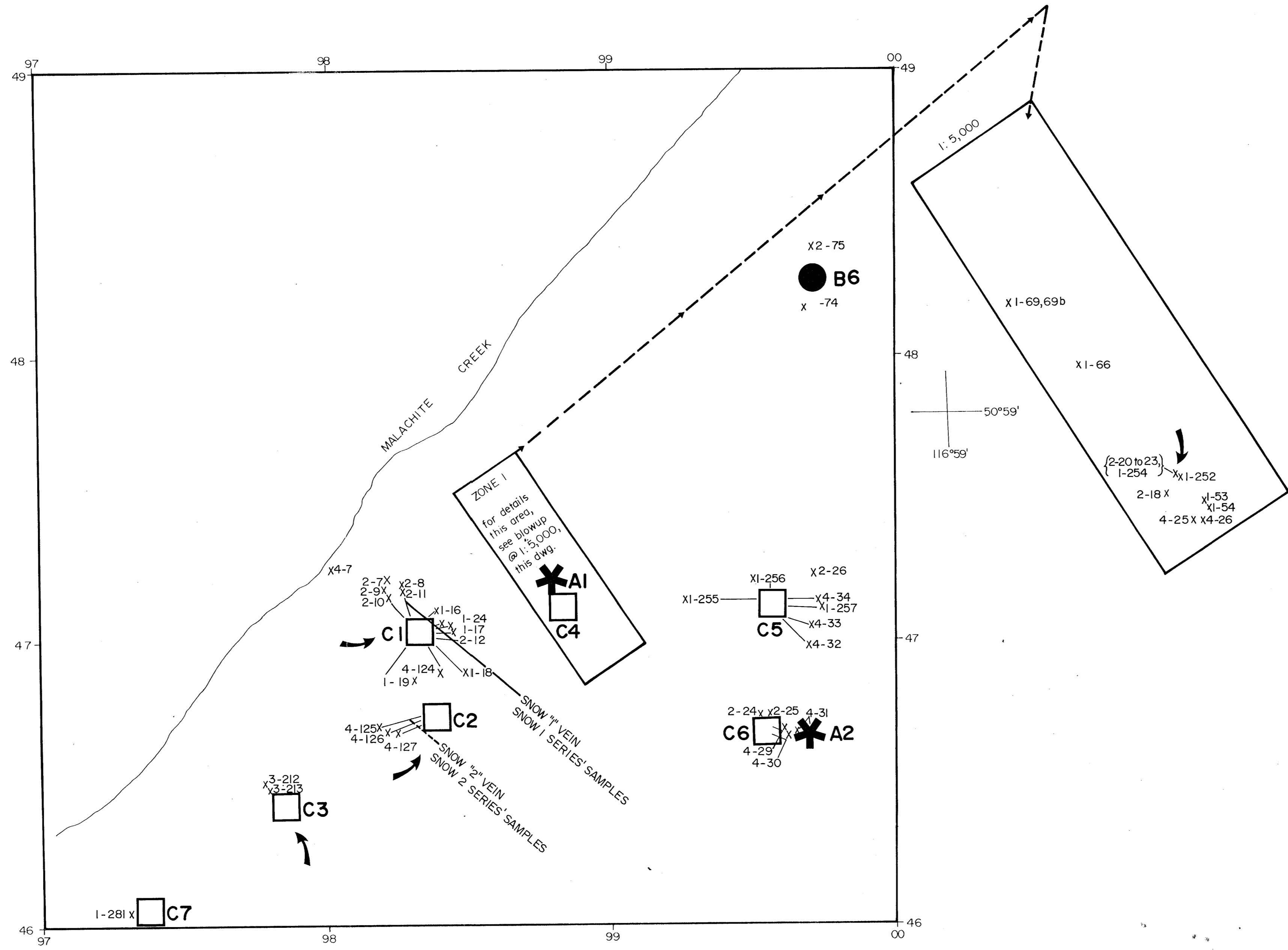


- LEGEND**
- A * Pb-Zn, matrix supported mineralization
 - B ● Cu, matrix supported mineralization
 - D △ Cu, vein supported mineralization
 - C □ Pb-Zn, vein supported mineralization
 - X 1-87 Sample location & number
 - ↗ Arrow indicates showing in outcrop

MINERAL RESOURCES BRANCH
 8733
 P. J. E.

FIRST NUCLEAR CORPORATION
 PROJECT: 2480 DEB CLAIM GROUP
 MINERAL OCCURRENCE MAP

DWG NO. 4a SCALE: 1:25,000 DRAWN BY: pmv
 N.T.S. 82N 14 E, 15 W DATE: Oct. 1980 CHECKED BY: jh
 N.T.S. 82N 3 E, 2 W



LEGEND

- A * Pb-Zn, matrix supported mineralization
- B ● Cu, matrix supported mineralization
- D △ Cu, vein supported mineralization
- C □ Pb-Zn, vein supported mineralization
- x 1-24 Sample location & number
- SHOWING IN OUTCROP

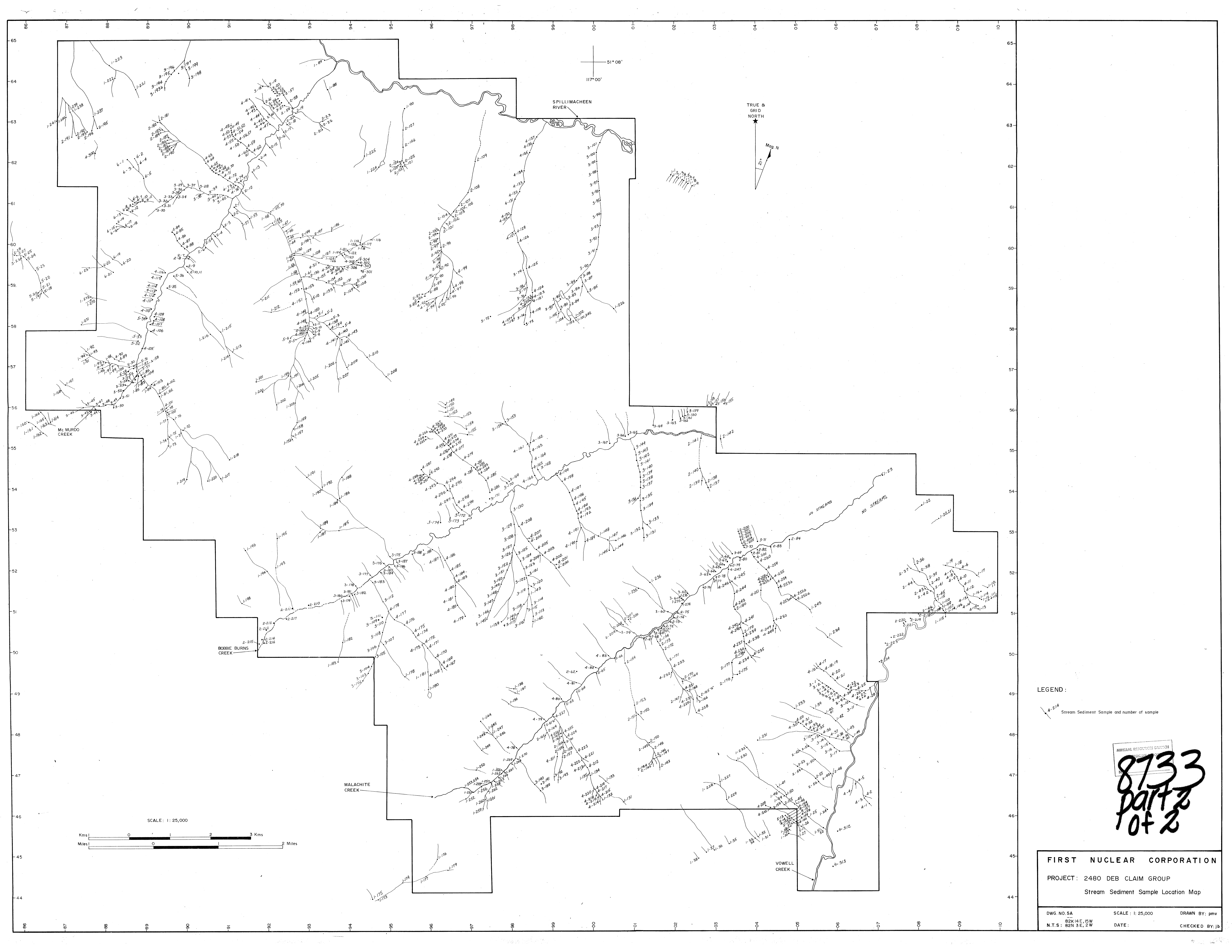
MINERAL RESOURCES BRANCH

8733
PORT 2
CP 2

FIRST NUCLEAR CORPORATION

PROJECT: 2480
DEB CLAIM GROUP
ZONE I & AREA
MINERAL OCCURRENCES MAP

Dwg. No. 418 B Scale: 1:10,000 Drawn By: pmv
82 K 14, 1:5,000
N.T.S. 82 N 3 Date: Oct. /80 Checked By: jb

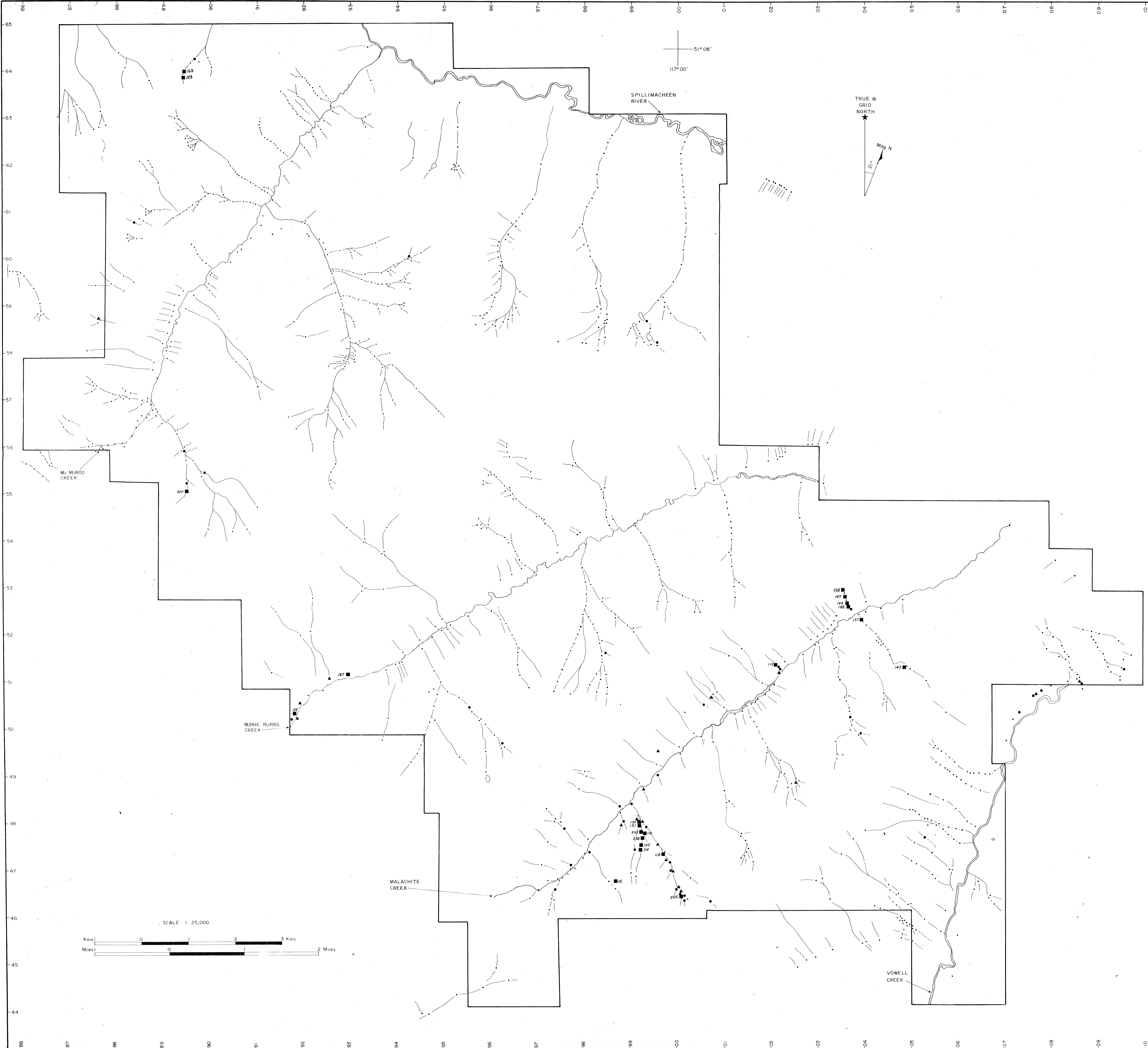


LEGEND:
 A-214 Stream Sediment Sample and number of sample

8733
 part 2
 of 2

FIRST NUCLEAR CORPORATION
 PROJECT: 2480 DEB CLAIM GROUP
 Stream Sediment Sample Location Map

DWG. NO. 5A SCALE: 1:25,000 DRAWN BY: pmv
 82K14E, 15W DATE: CHECKED BY: JB
 N.T.S.: 82N 3E, 2W



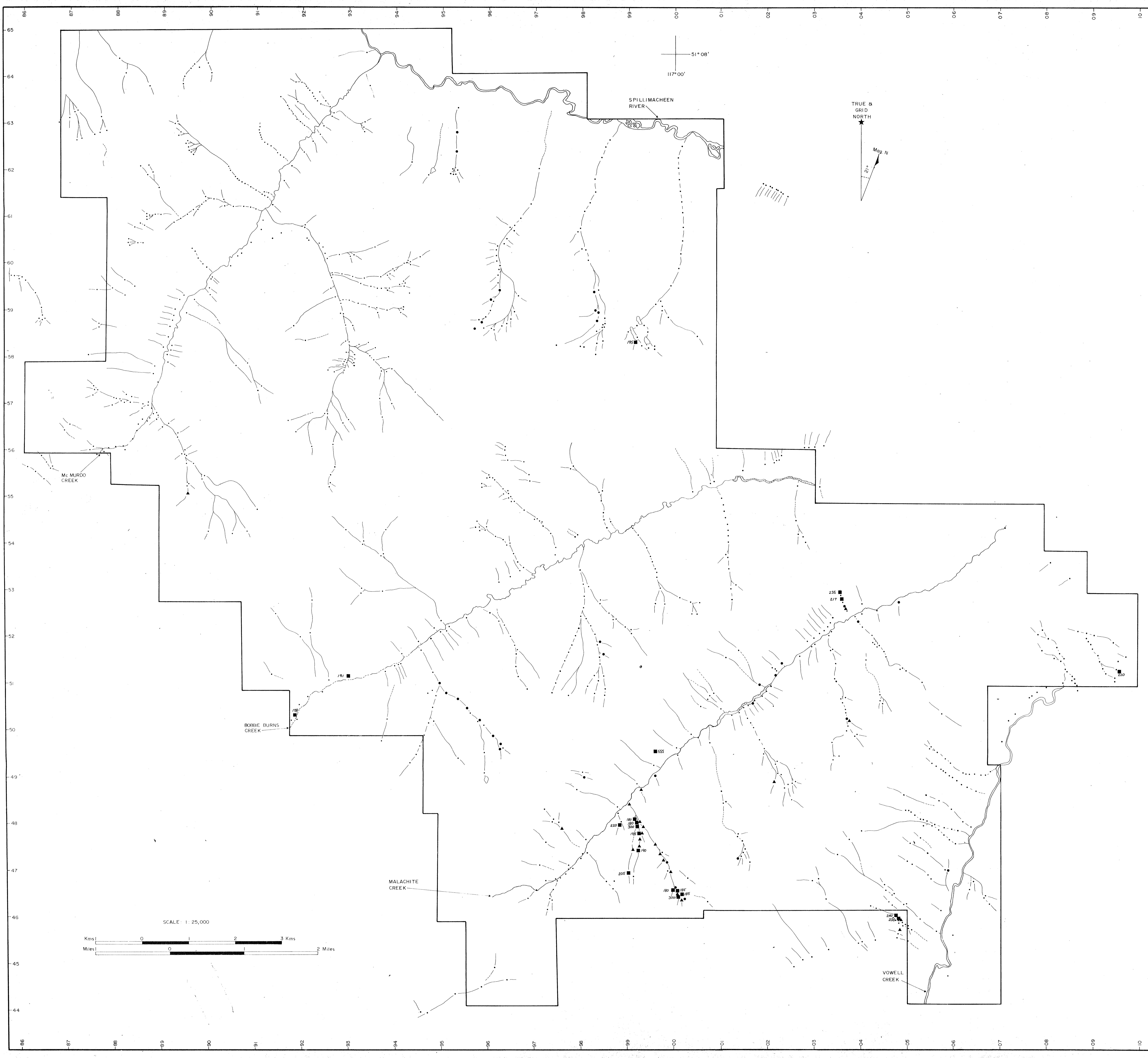
LEGEND

- TOP 10 PERCENTILE
50 ≤ 75 ppm
- ▲ TOP 5 PERCENTILE
76 ≤ 111 ppm
- TOP 2.5 PERCENTILE
≥ 112 (value indicated in ppm)
- SAMPLE LOCATION POINT

MINERAL RESOURCES DIVISION
8733
 Part 2
 of 2

FIRST NUCLEAR CORPORATION
 PROJECT: 2480 DEB CLAIM GROUP
 Lead in Stream Sediment

DWG NO. 5B SCALE: 1:25,000 DRAWN BY: pmv
 82K14E, 15W DATE: CHECKED BY: jb
 N.T.S.: 82N 3E, 2W



LEGEND

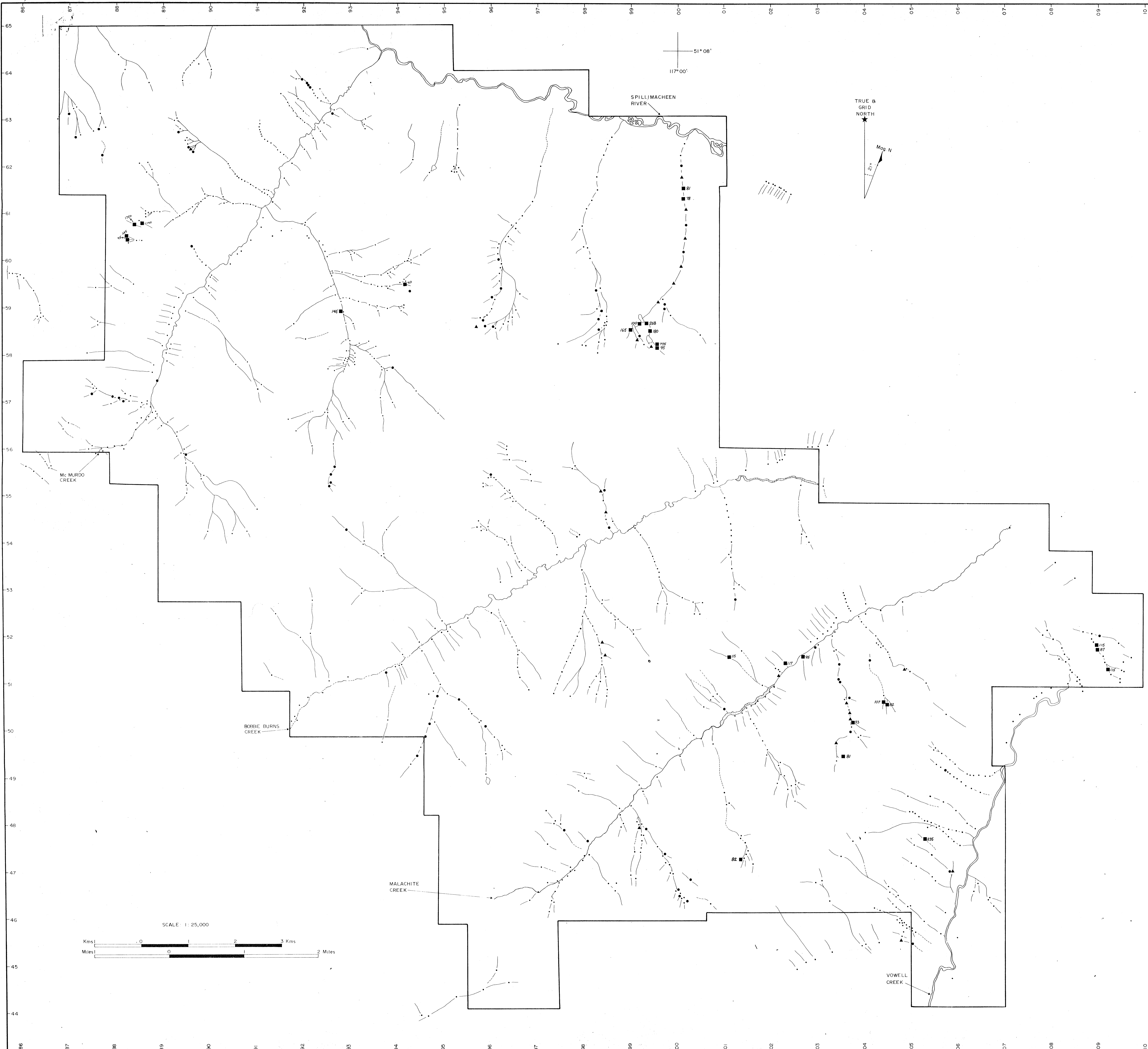
- TOP 10 PERCENTILE
126 ≤ 147 ppm
- ▲ TOP 5 PERCENTILE
148 ≤ 177 ppm
- 250 TOP 25 PERCENTILE
≥ 178 ppm (value indicated in ppm)
- STREAM SEDIMENT SAMPLE LOCATION POINT

MINERAL RESOURCES BRANCH
PROSPECTIVITY REPORT

8733
part 2
of 2

FIRST NUCLEAR CORPORATION
PROJECT: 2480 DEB CLAIM GROUP
Zinc in Stream Sediment

DWG NO 5C SCALE: 1:25,000 DRAWN BY: pmv
82K14E, 15W DATE: CHECKED BY: jb
N.T.S.: 82N 3E, 2W



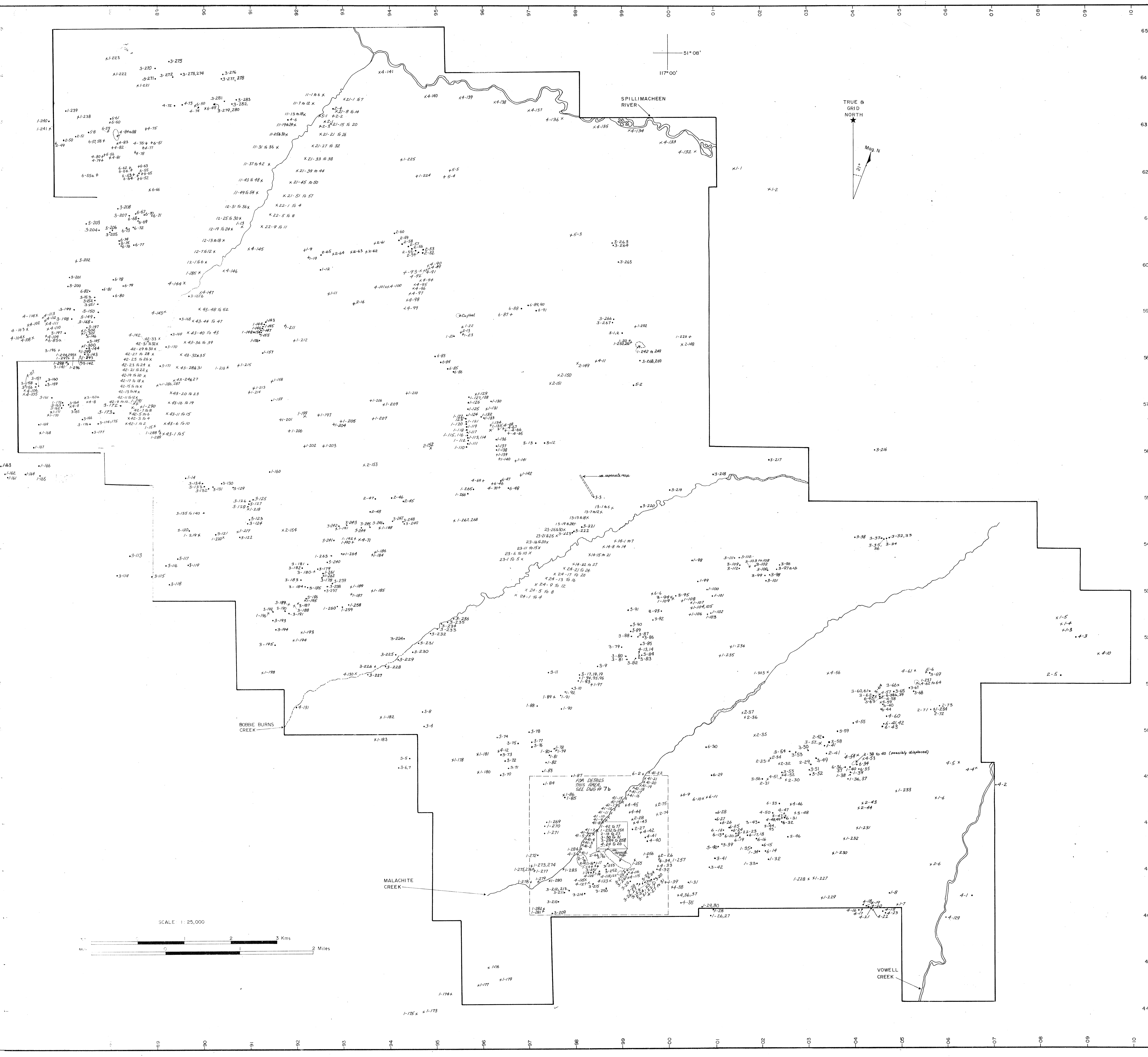
LEGEND

- TOP 10 PERCENTILE
55 ≤ 65 ppm
- ▲ TOP 5 PERCENTILE
66 ≤ 77 ppm
- TOP 2.5 PERCENTILE
≥ 78 ppm (value indicated in ppm)
- SAMPLE LOCATION POINT

MINERAL RESOURCES BRANCH
 8733
 Part 2
 of 2

FIRST NUCLEAR CORPORATION
 PROJECT: 2480 DEB CLAIM GROUP
 Copper in Stream Sediment

DWG. NO. 5d SCALE: 1:25,000 DRAWN BY: pmv
 82K4E, 15W N.T.S.: 82N 3E, 2W DATE: CHECKED BY: jb

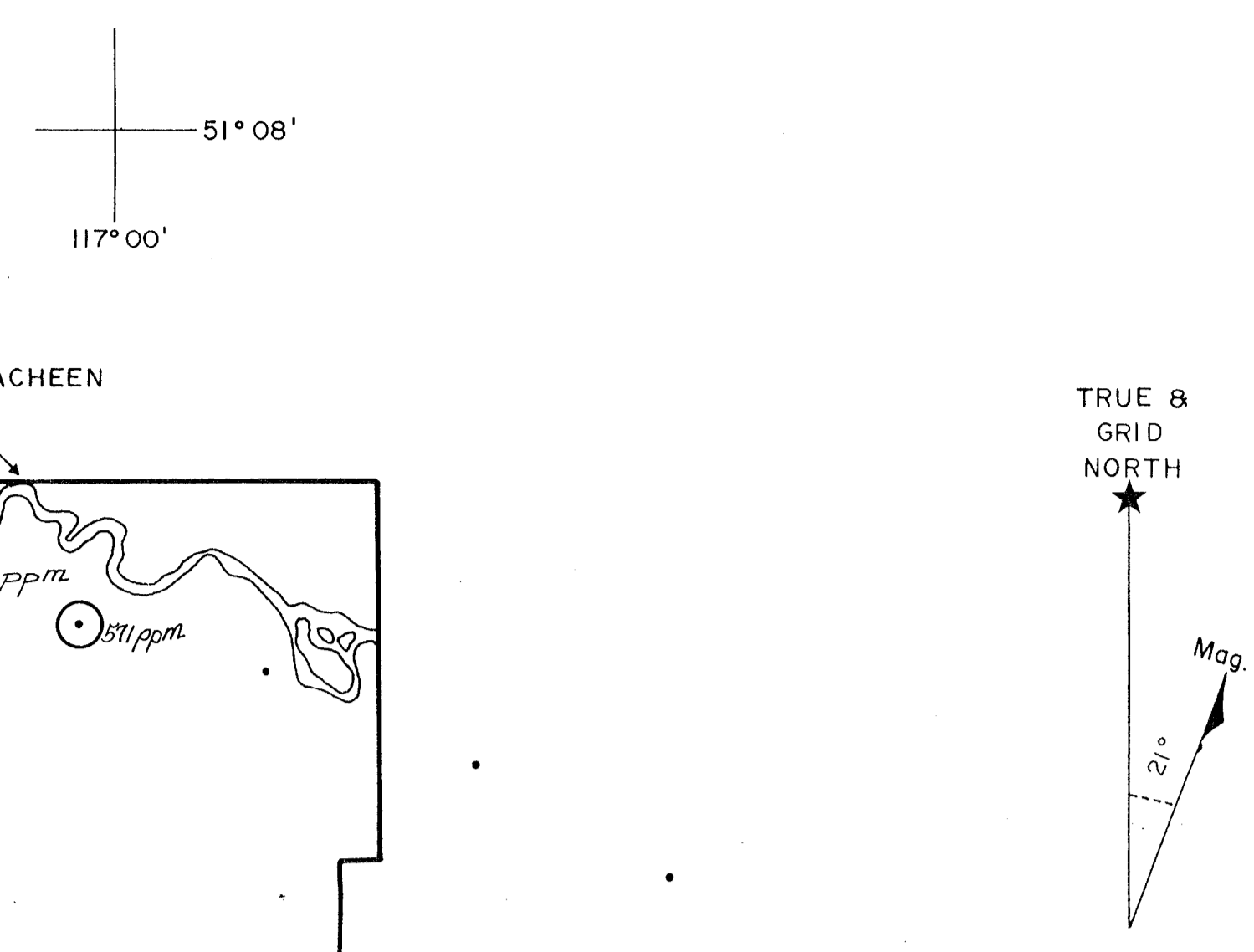
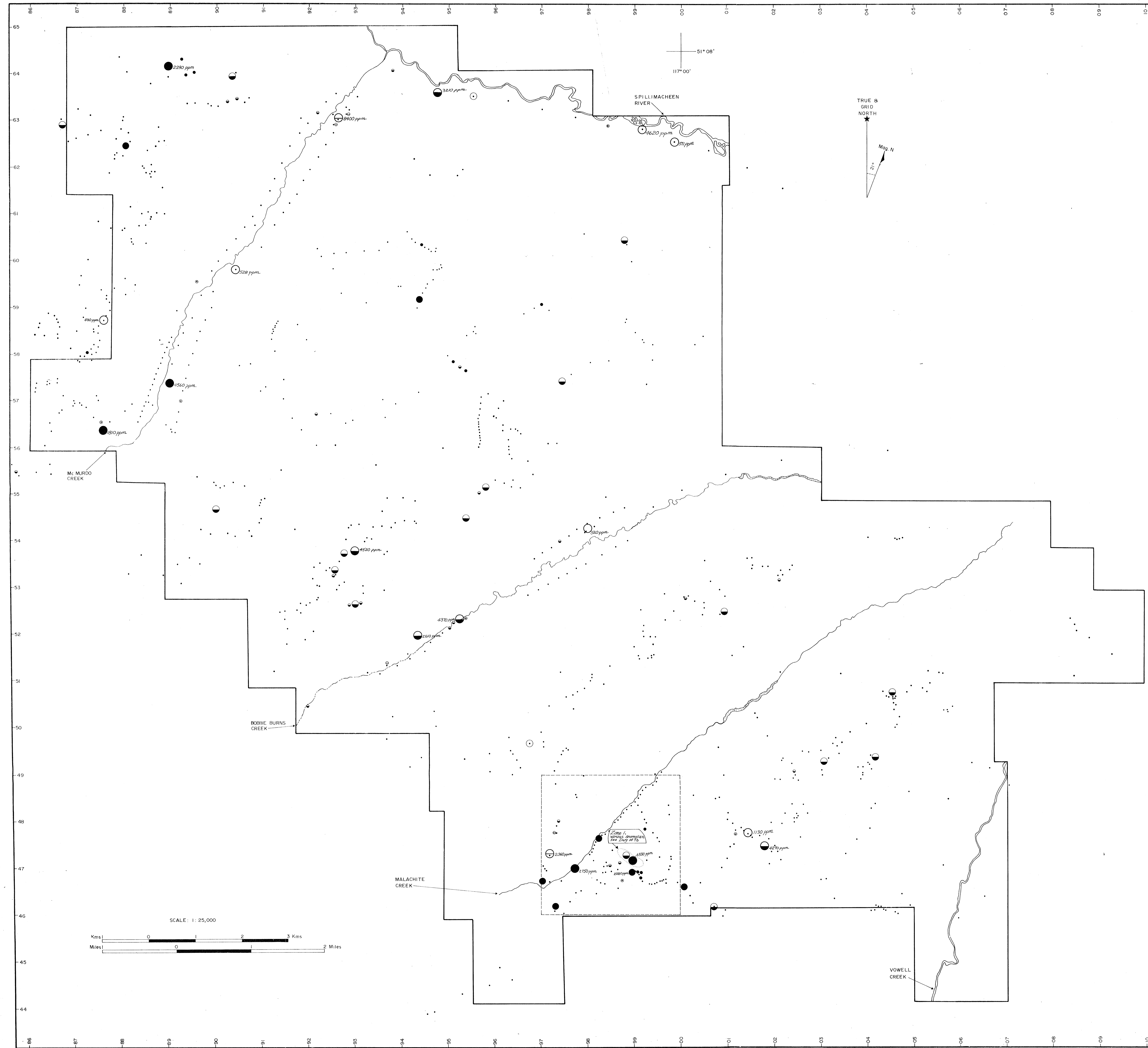


LEGEND:
 X1-257 FLOAT SAMPLE, LOCATION & NUMBER
 X4-32 OUTCROP SAMPLE, LOCATION & NUMBER

8733
 Part 2
 of 2

FIRST NUCLEAR CORPORATION
 PROJECT: 2480 DEB CLAIM GROUP
 Rock Sample Location Map

DWG. No. 6a SCALE: 1:25,000 DRAWN BY: pmv
 82K 14E, 15W
 N.T.S.: 82N 3E, 2W DATE: 12/80 CHECKED BY: JB



Legend

Lead in Rock

Slate
 Median = 12 ppm
 Population = 567 samples

- Top 10% ile, 180 to 530 ppm
- ◐ Top 5% ile, 530 to 2400 ppm
- Top 2 1/2% ile, ≥ 2400 ppm

Carbonate

Median = 11 ppm
 Population = 34 samples

- Top 10% ile, 230 to 630 ppm
- ◐ Top 5% ile, 630 to 1600 ppm
- Top 2 1/2% ile, ≥ 1600 ppm

C. Obscites

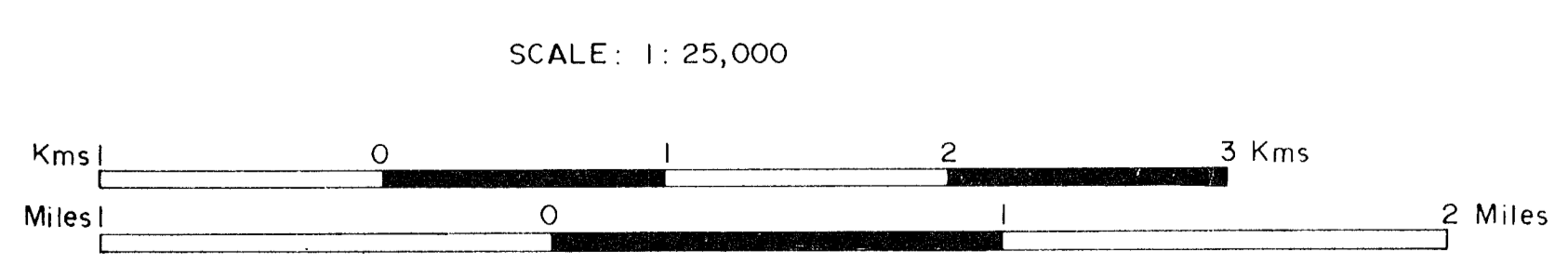
Median = 11.5 ppm
 Population = 173 samples

- Top 10% ile, 160 to 251 ppm
- ◐ Top 5% ile, 251 to 480 ppm
- Top 2 1/2% ile, ≥ 480 ppm

Quartz

Median = 9 ppm
 Population = 59 samples

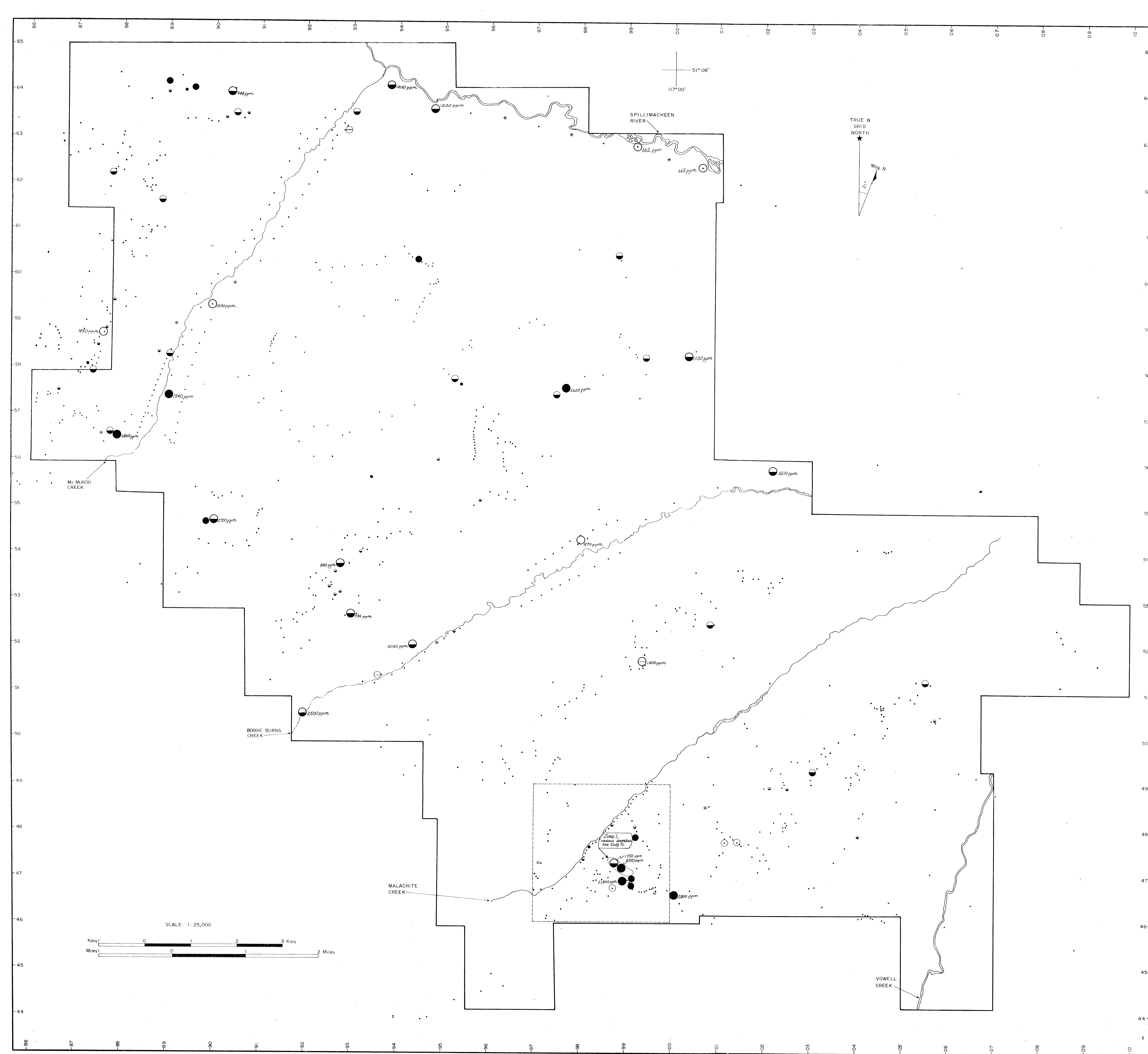
- Top 10% ile, 550 to 1100 ppm
- ◐ Top 5% ile, 1100 to 2100 ppm
- Top 2 1/2% ile, ≥ 2100 ppm



MINERAL RESOURCES BRANCH
 GEOSCIENCE BRANCH
8733
part 2
of 2

FIRST NUCLEAR CORPORATION
 PROJECT: 2480 DEB CLAIM GROUP
 LEAD IN ROCK

DWG NO. 6b SCALE: 1:25,000 DRAWN BY: pmv
 82K14E, 15W DATE: 12/80 CHECKED BY: j
 N.T.S. 82N 3E, 2W

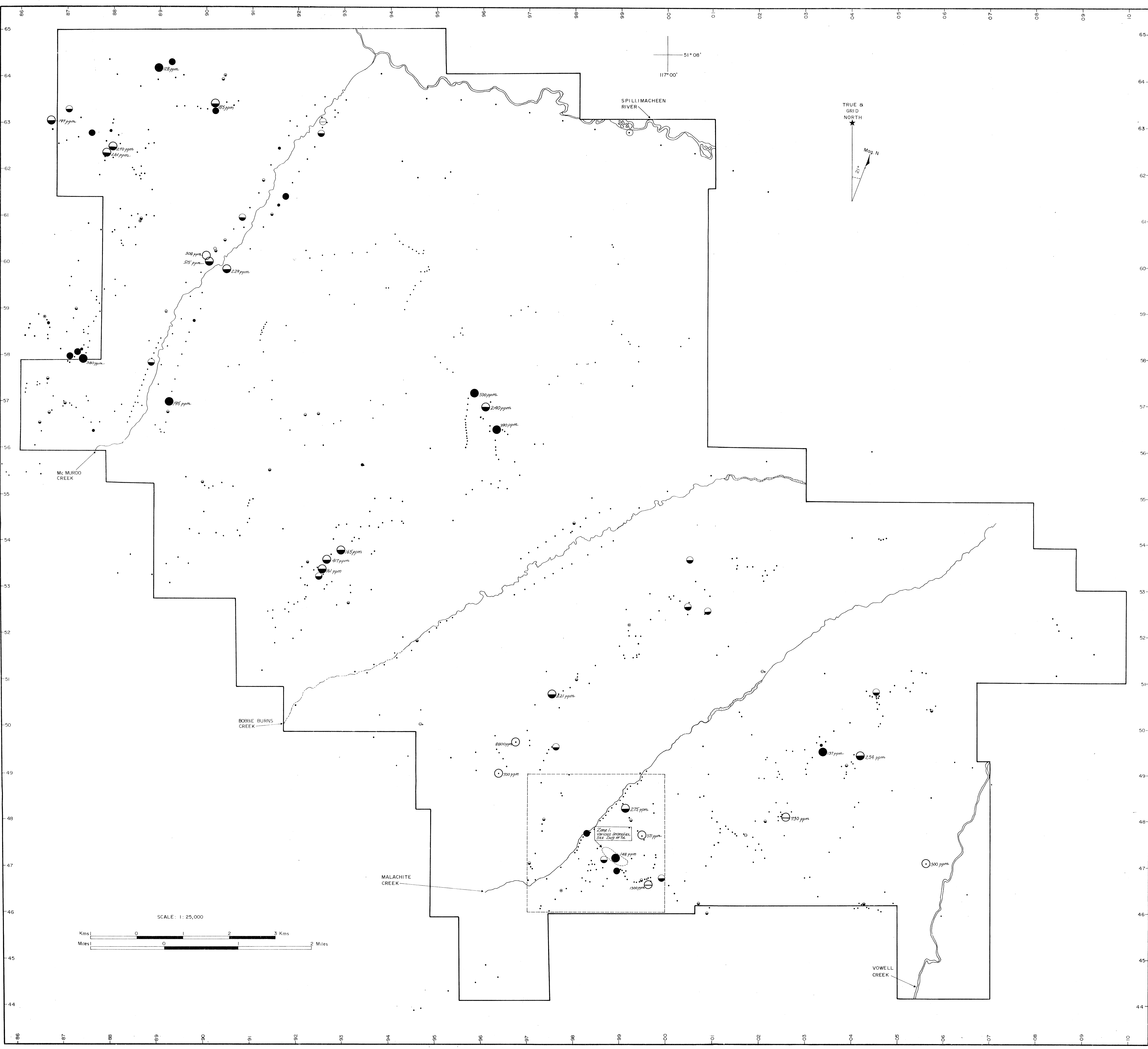


Legend

Zinc in Rock

- | | |
|---|--|
| Slate
Median = 80 ppm
Population = 367 samples | <ul style="list-style-type: none"> ○ Top 10% ile, 140 to 225 ppm ◐ Top 5% ile, 225 to 580 ppm ● Top 2 1/2% ile, ≥ 580 ppm |
| Carbonate
Median = 35 ppm
Population = 314 samples | <ul style="list-style-type: none"> ○ Top 10% ile, 190 to 380 ppm ◐ Top 5% ile, 380 to 1550 ppm ● Top 2 1/2% ile, ≥ 1550 ppm |
| C. Clastics
Median = 52.5 ppm
Population = 173 samples | <ul style="list-style-type: none"> ○ Top 10% ile, 210 to 400 ppm ◐ Top 5% ile, 400 to 660 ppm ● Top 2 1/2% ile, ≥ 660 ppm |
| Quartz
Median = 15 ppm
Population = 59 samples | <ul style="list-style-type: none"> ○ Top 10% ile, 140 to 245 ppm ◐ Top 5% ile, 295 to 540 ppm ● Top 2 1/2% ile, ≥ 540 ppm |

8733
part 2
of 2



Legend

Copper in Rock

- | | |
|---|---|
| <u>Slate</u> | <ul style="list-style-type: none"> • Top 10%ile, 66 to 112 ppm ○ Top 5%ile, 112 to 158 ppm ● Top 2 1/2%ile, ≥ 158 ppm |
| <p>Median: 26.3 ppm
Population: 567 samples</p> | |
| <u>Carbonate</u> | <ul style="list-style-type: none"> • Top 10%ile, 42 to 63 ppm ○ Top 5%ile, 63 to 105 ppm ● Top 2 1/2%ile, ≥ 105 ppm |
| <p>Median: 11 ppm
Population: 314 samples</p> | |
| <u>C. Clastics</u> | <ul style="list-style-type: none"> ○ Top 10%ile, 60 to 110 ppm ○ Top 5%ile, 110 to 230 ppm ○ Top 2 1/2%ile, ≥ 230 ppm |
| <p>Median: 11 ppm
Population: 173 samples</p> | |
| <u>Quartz</u> | <ul style="list-style-type: none"> • Top 10%ile, 125 to 240 ppm ○ Top 5%ile, 240 to 720 ppm ○ Top 2 1/2%ile, ≥ 720 ppm |
| <p>Median: 8 ppm
Population: 59 samples</p> | |

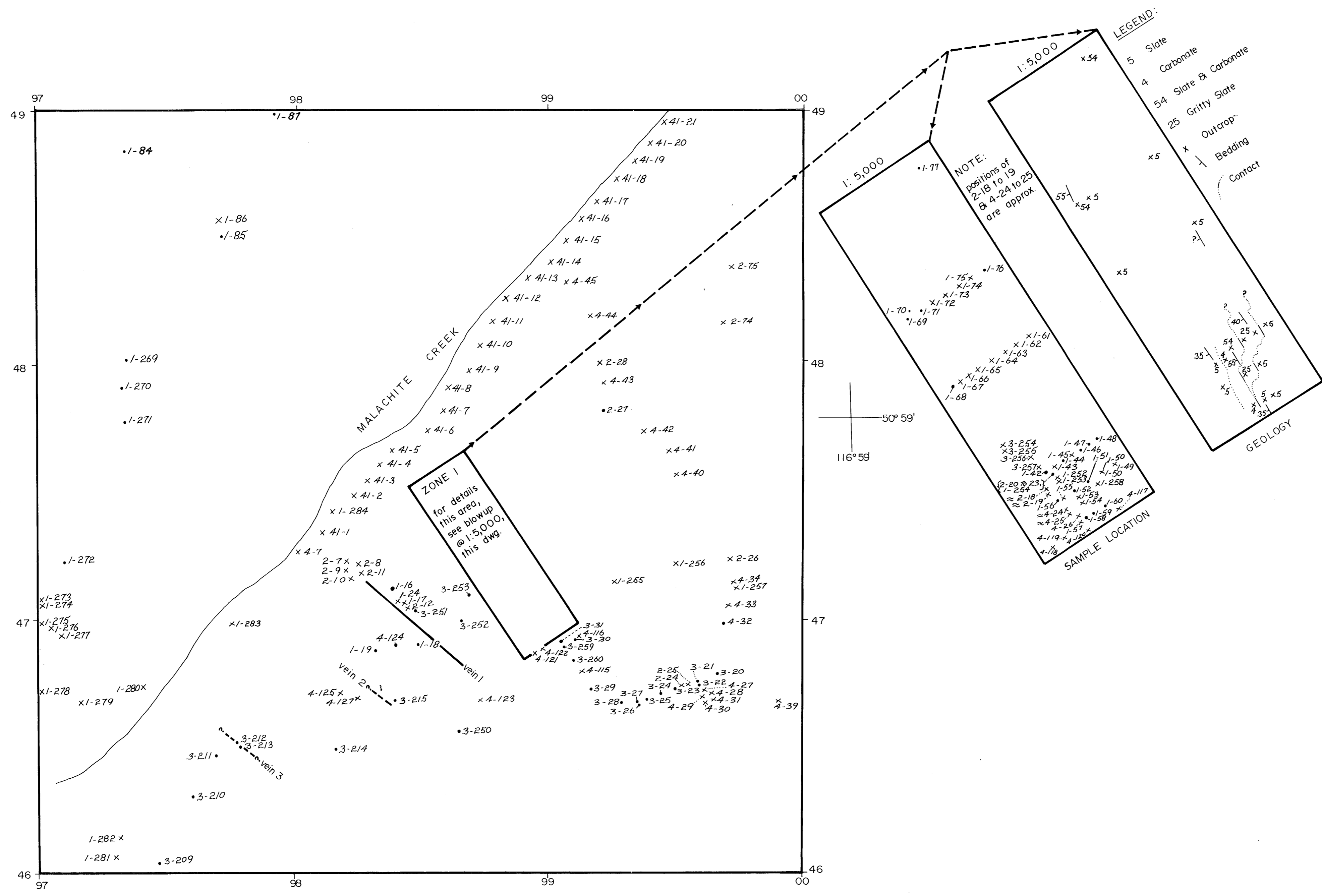
8733
part 2
of 2

MINERAL RESEARCH GROUP

FIRST NUCLEAR CORPORATION

PROJECT: 2480 DEB CLAIM GROUP
COPPER IN ROCK

DWG NO. 6d	SCALE: 1:25,000	DRAWN BY: pmv
N.T.S. 82N 14 E, 15 W 82N 3 E, 2 W	DATE: 12/80	CHECKED BY: j.b



MINERAL RESOURCES BRANCH
ASSESSMENT REPORT

8733
part 2
of 2

FIRST NUCLEAR CORPORATION

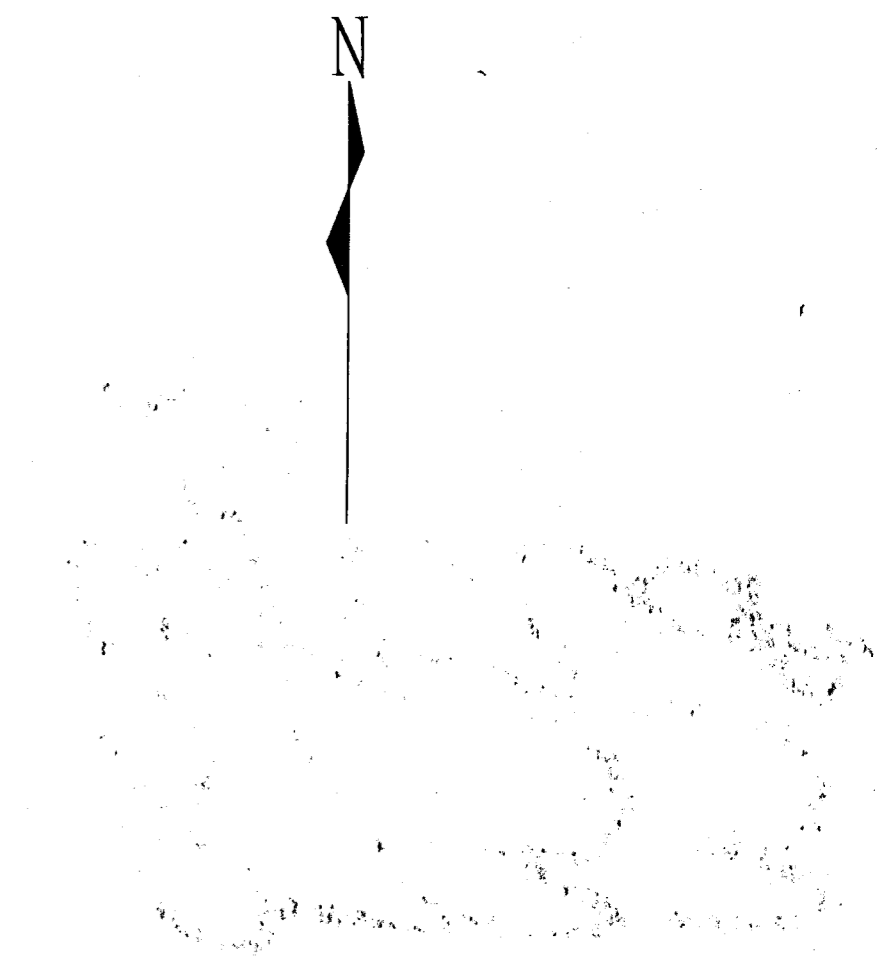
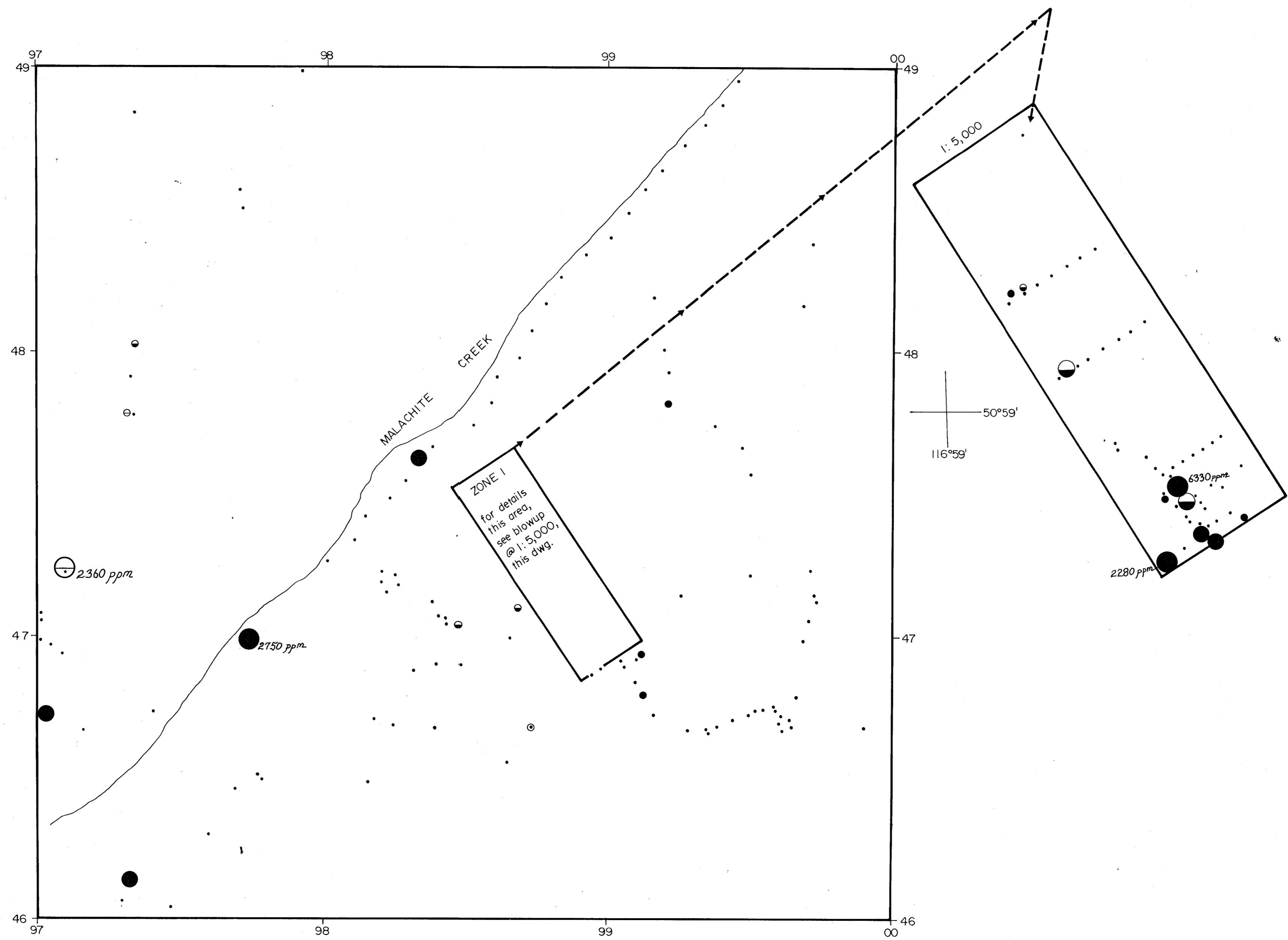
PROJECT: 2480
DEB CLAIM GROUP
ZONE I & AREA
ROCK SAMPLE LOCATION MAP

Dwg. No. 7a
82K14,
N.T.S. 82N 3

Scale: 1:10,000
1:5,000

Date: OCT. 15, 1980

Drawn By: pmv
Checked By: jb



MINERAL RESOURCES BRANCH
ASSESSMENT UNIT

8733
part 2 of
2

Legend

Lead in Rock

Slate

Median = 12 ppm
Population = 567 samples

- Top 10%ile, 180 to 530 ppm
- ◐ Top 5%ile, 530 to 2400 ppm
- ◑ Top 2½%ile, ≥ 2400 ppm

Carbonate

Median = 17 ppm
Population = 314 samples

- Top 10%ile, 230 to 630 ppm
- ◐ Top 5%ile, 630 to 1600 ppm
- ◑ Top 2½%ile, ≥ 1600 ppm

Quartz

Median = 9 ppm
Population = 59 samples

- Top 10%ile, 550 to 1100 ppm
- ◐ Top 5%ile, 1100 to 2100 ppm
- ◑ Top 2½%ile, ≥ 2100 ppm

C. Clastics

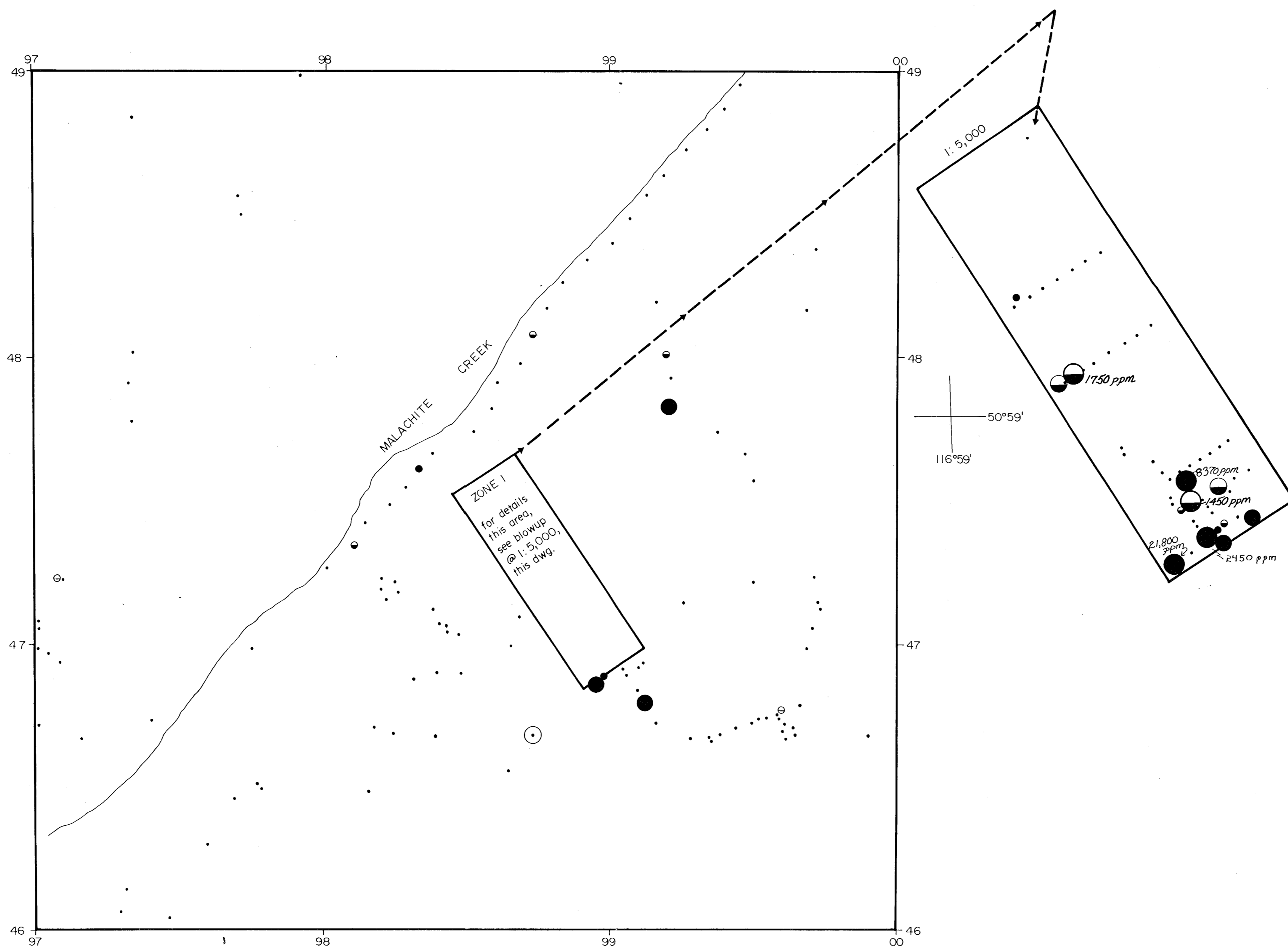
Median = 115 ppm
Population = 173 samples

- Top 10%ile, 160 to 257 ppm
- ◐ Top 5%ile, 257 to 480 ppm
- ◑ Top 2½%ile, ≥ 480 ppm

FIRST NUCLEAR CORPORATION

PROJECT: 2480
DEB CLAIM GROUP
ZONE I
LEAD IN ROCK

Dwg. No. 7b Scale: 1:10,000 Drawn By: pmv
82 K 14, 1:5,000
N.T.S. 82N 3 Date: 12/80 Checked By: jb



Legend

Zinc in Rock

Slate

Median = 80 ppm
Population = 567 samples

- Top 10% ile, 140 to 225 ppm
- ◐ Top 5% ile, 225 to 580 ppm
- Top 2 1/2% ile, ≥ 580 ppm

Carbonate

Median = 35 ppm
Population = 314 samples

- Top 10% ile, 190 to 380 ppm
- ◐ Top 5% ile, 380 to 1550 ppm
- Top 2 1/2% ile, ≥ 1550 ppm

C. Clastics

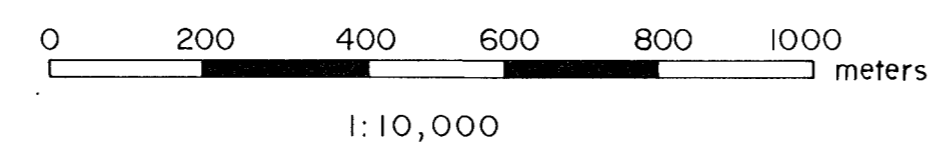
Median = 52.5 ppm
Population = 173 samples

- Top 10% ile, 210 to 400 ppm
- ◐ Top 5% ile, 400 to 660 ppm
- Top 2 1/2% ile, ≥ 660 ppm

Quartz

Median = 15 ppm
Population = 59 samples

- Top 10% ile, 140 to 295 ppm
- ◐ Top 5% ile, 295 to 540 ppm
- Top 2 1/2% ile, ≥ 540 ppm



MINERAL RESOURCES BRANCH
ASSESSMENT DIVISION

8733
part 2 of 2

FIRST NUCLEAR CORPORATION

PROJECT: 2480
DEB CLAIM GROUP
ZONE I
ZINC IN ROCK

Dwg. No. 7c
82 K 14,
N.T.S. 82N 3

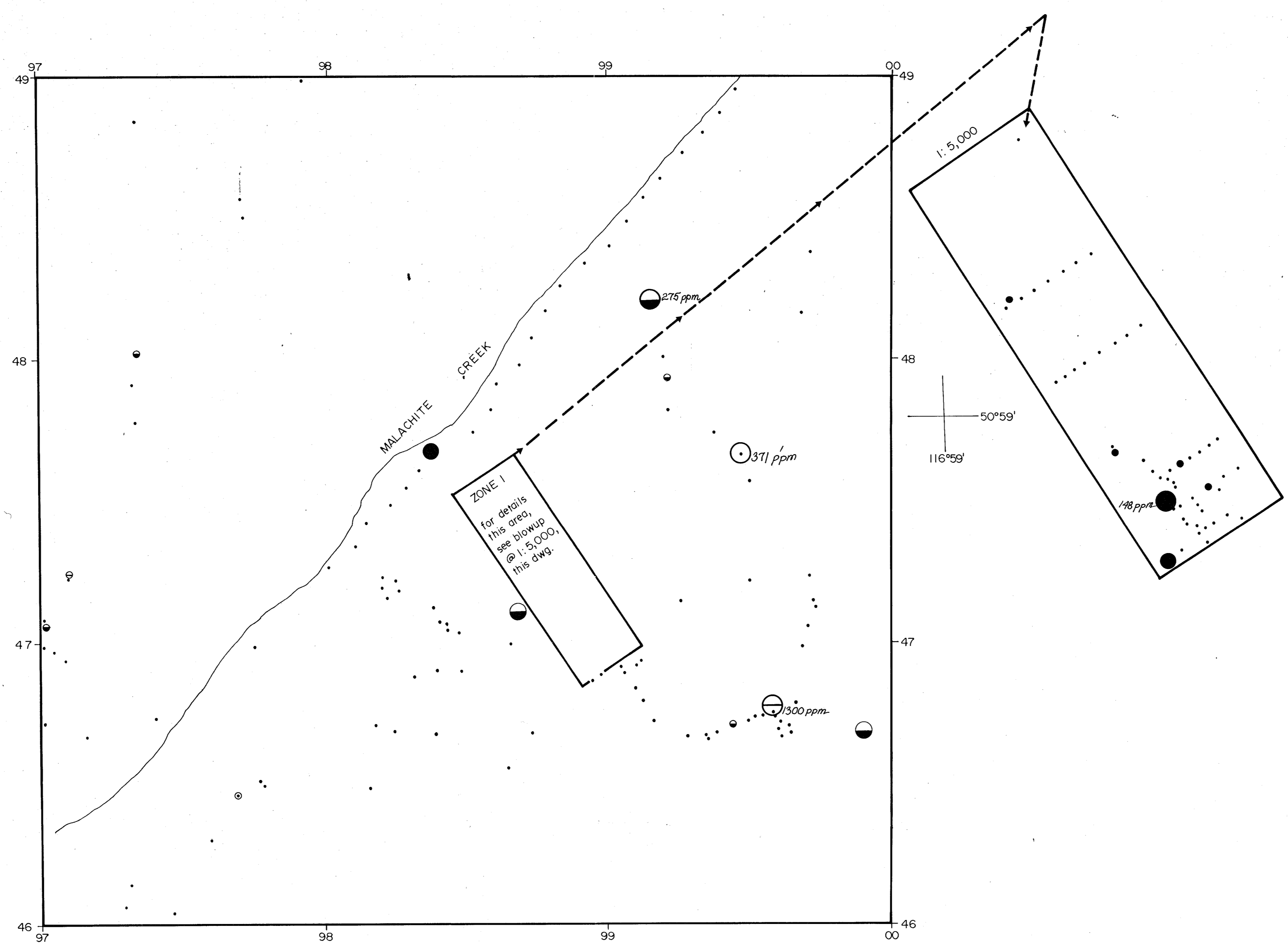
Scale: 1:10,000
1:5,000

Date: 12/80

Drawn By: pmv
Checked By: jb

MINERAL RESOURCES BRANCH
ASSESSMENT REPORT

8733
PART 2
OF 2



Legend

Copper in Rock

- | | |
|-------------------------|-------------------------------|
| <u>Slate</u> | • Top 10% ile, 66 to 112 ppm |
| Median: 26.3 ppm | ◐ Top 5% ile, 112 to 158 ppm |
| Population: 587 samples | ◑ Top 2 1/2% ile, ≥ 158 ppm |
| <u>Carbonate</u> | • Top 10% ile, 42 to 63 ppm |
| Median: 11 ppm | ◐ Top 5% ile, 63 to 105 ppm |
| Population: 314 samples | ◑ Top 2 1/2% ile, ≥ 105 ppm |
| <u>C. Clastics</u> | ◐ Top 10% ile, 60 to 110 ppm |
| Median: 11 ppm | ◑ Top 5% ile, 110 to 230 ppm |
| Population: 173 samples | ◒ Top 2 1/2% ile ≥ 230 ppm |
| <u>Quartz</u> | ◐ Top 10% ile, 125 to 290 ppm |
| Median: 8 ppm | ◑ Top 5% ile, 290 to 720 ppm |
| Population: 59 samples | ◒ Top 2 1/2% ile ≥ 720 ppm |

FIRST NUCLEAR CORPORATION

PROJECT: 2480
DEB CLAIM GROUP
ZONE I
COPPER IN ROCK

Dwg. No. 7d	Scale: 1:10,000	Drawn By: pmv
82 K 14,	1:5,000	
N.T.S. 82N 3	Date: 12/80	Checked By: jb