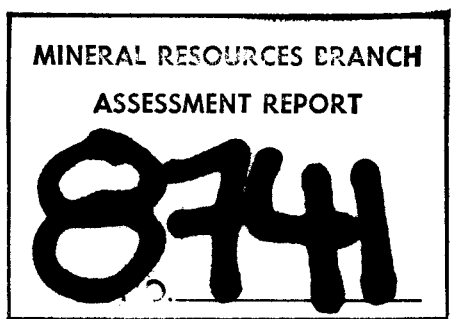


1980 DRILL PROGRAM
ON THE
BONNY CLAIM
OMINICA MINING DIVISION
(NTS 93E 53°W - 128°N)
FOR
SUTHERLAND RESOURCES LTD.



August 1980

Columbia Geophysical Ltd.

1980 DRILL PROGRAM, BONNY CLAIM
OWNED BY SUTHERLAND RESOURCES LTD.

TABLE OF CONTENTS

INTRODUCTION	Page 1
LOCATION AND ACCESS	Page 1
DRILL PROGRAM	Page 1 & 2
GEOLOGY MAP	Page 3
PROPERTY LOCATION MAP	Page 4
CLAIM LOCATION MAP	Page 5
AUTHOR'S QUALIFICATIONS	Page 6
DRILL PROGRAM COST BREAKDOWN	Page 7
DRILL HOLE LOCATION MAP	Page 8
SEISMIC REFRACTION SURVEY	Appendix 1
DIAMOND DRILL HOLE LOGS	Appendix 2

1980 DRILLING REPORT ON BONNY CLAIM
 OMINICA M.D., RECORD # 2281
 OWNED BY SUTHERLAND RESOURCES LTD.
 1028 - 510 WEST HASTINGS, VANCOUVER, B.C.

INTRODUCTION

During the months of July-August 1980, a diamond drill program was carried out on the Bonny Claim to test a geophysical VLF-EM anomaly.

LOCATION AND ACCESS: (53°W - 128°N)

The property consists of one claim (12 units) located 48 km. S.S.W. of Houston, B.C. Access is by highway and secondary road approximately 48 km. S.S.W. from Houston, B.C. in the Ominica Mining Division, central British Columbia.

DRILL PROGRAM

The Drill Site and Holes were spotted by Joe Radovich and Fern Turpin, employed by Columbia Geophysical.

The Drill Contract was let to Raymond Drilling Ltd. of Vancouver, B.C. The program consists of 7 diamond drill holes totalling 415 feet, using a Boyles B.B.S. 1 wire line size B.Q. core. The purpose of the drill program was to test geophysical VLF-EM anomalies.

Supervision and consultation was conducted by Peter J. Burjoski.

The following are the drill hole statistics:

DDH # 1	Depth	75 feet	Vertical	90°
DDH # 1A	"	86 feet	"	"
DDH # 2	"	72 feet	"	"
DDH # 3	"	50 feet	"	"
DDH # 4	"	40 feet	"	"
DDH # 5	"	45 feet	"	"
DDH # 6	"	47 feet	"	"

cont.

DDH 1 - 6 was not logged as the overburden consisted of gravel and red clay.

Drill Supervision, logging, and core sampling was carried out by, W.G. Timmins, P. Geol., P. Eng.

Respectfully submitted,

COLUMBIA GEOPHYSICAL LTD.

Per:



Tom Rolston,
Project Manager

LEGEND

1 QUATERNARY
PLEISTOCENE & RECENT, Till, gravel, sand, clay, alluvium.

unconformity

2 TERTIARY
OLIGOCENE OR LATER, Basalt, Tuff

unconformity

3 CRETACEOUS TO OLIGOCENE
UPPER CRETACEOUS TO OLIGOCENE, OOTSA LAKE GROUP,
Rhyolite, dacite, andesite, basalt, associated tuffs & breccias,
minor conglomerates, sandstone & coal.

nonconformity

4 JURASSIC (?) AND LATER
JURASSIC (?) AND LATER, COAST INTRUSION,
Porphyritic diorite.

Intrusive
contact

5 JURASSIC
MIDDLE JURASSIC (MAINLY), HAZELTON GROUP,
Brecci, tuff, andesite, dacite, rhyolite, basalt, argillite,
greywacke, chert, conglomerate, minor limestone.

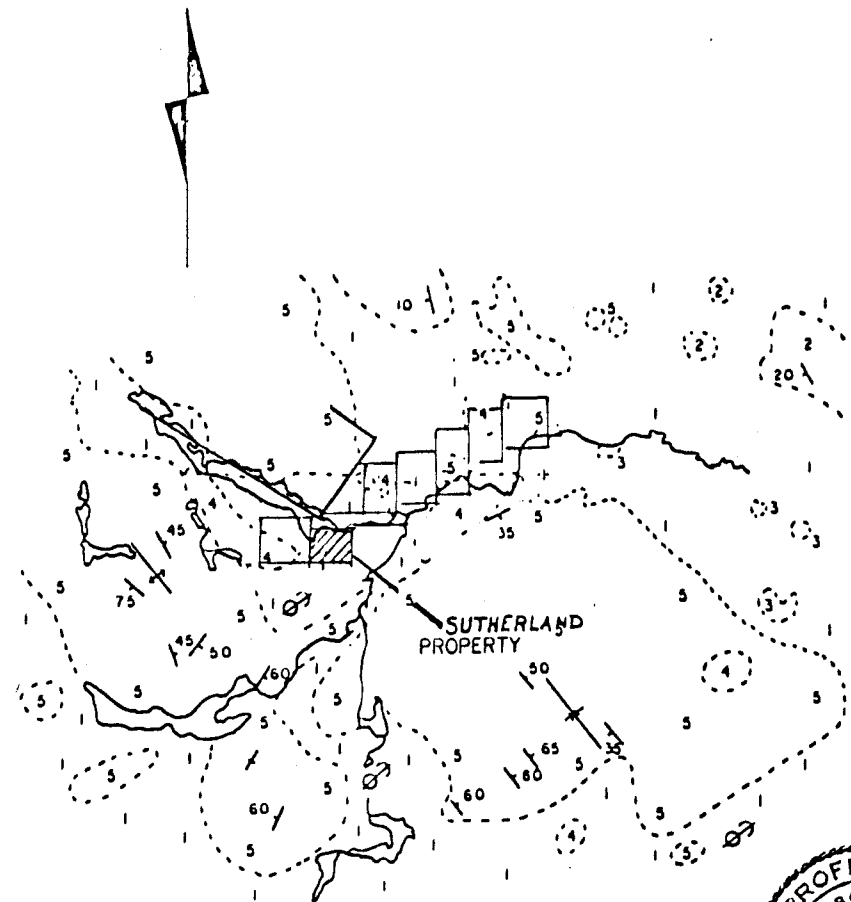
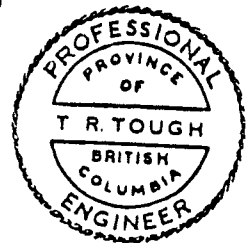
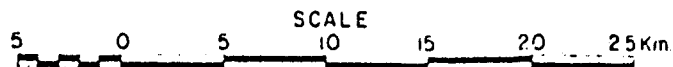


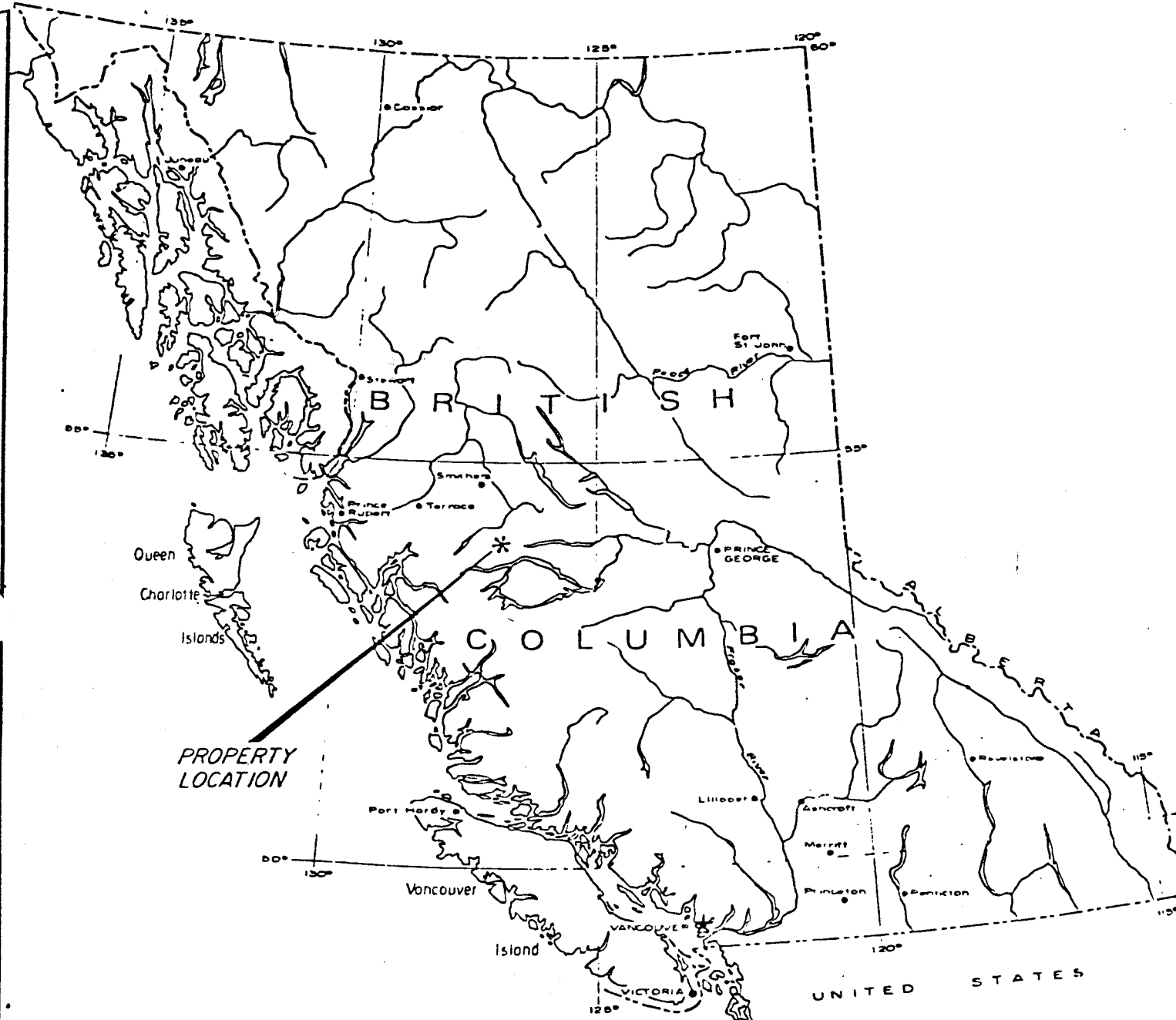
FIGURE 4
GEOLOGY OF
NADINA RIVER TAGETOCHLAIN LAKE AREA

Composite geological map after Duffell (1958), Church (1973) and
Carter & Kirkham (open file)



T R TOUGH & ASSOCIATES LTD

SUTHERLAND RESOURCES LTD.

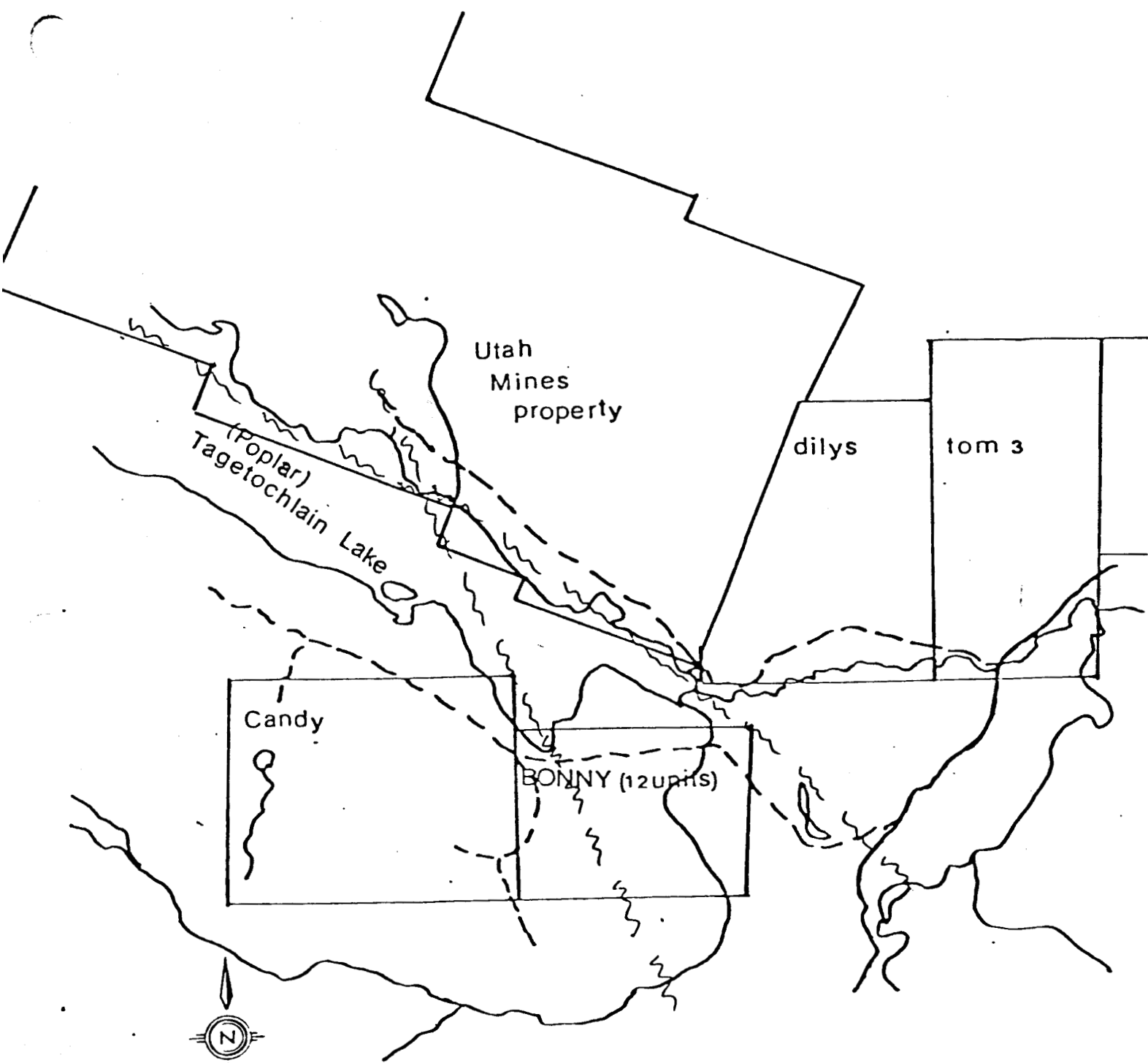


James R. Tough

T.R. TOUGH & ASSOCIATES LTD
SUTHERLAND RESOURCES LTD.

LOCATION MAP





SUTHERLAND RESOURCES LTD.
BONNY Claim, Omineca M.D. B.C.
location map
1cm:500M Nov. 79

Columbia geophysical supplies Ltd.

7050 HALLIGAN STREET, BURNABY, B.C. V5E 1R6

Phone: (604) 526-1732
or (604) 687-6671

CERTIFICATE OF QUALIFICATIONS

I, Tom Rolston, of 7050 Halligan Street, Burnaby, B.C. have actively been engaged in my profession since 1953 and state as follows:

1. 11 years with the R.C.A.F. as Instrument and Electronic Technician with crew supervisory capacity in various electronic and instrumentation systems.
2. Two years with Kerr-Addison Mines Ltd. as Electronic Technician servicing, repairing and maintaining various type of geophysical instruments, with two seasons as Field Supervisor and Geophysical Instrument Operator in mining exploration, including airborne and ground geophysical surveys, geochemical surveys, geophysical and geochemical drafting and mapping.
3. 10 years with Geotronics Surveys Ltd. as Field Supervisor of geophysical and geochemical surveys and Instrument Operator of various geophysical instruments such as airborne and ground systems magnetometer, electromagnetic, gravity meter, self-potential meter, scintillometer and induced polarization.
4. The past 15 years contracting geophysical survey in close association with mining engineers for various mining companies.
5. President and Manager of Columbia Geophysical Services Ltd.

DATED at Burnaby, British Columbia this 1 day of **AUG** 19 **80**.



Tom Rolston, Geophysical Operator and Project Geophysicist
For: Columbia Geophysical Services Ltd.

BONNY CLAIMS - Ominica Mining Division

COST BREAK-DOWN (DRILL PROGRAM FOR ASSESSMENT)

Spot Drill Site	\$ 1,993.26
Road Building and Repair	8,199.49
Supervision and Consultation	1,164.57
Seismic Refraction Profile (over Anomaly A)	1,786.14
Equipment Rental (drill, cat & trucks stand-by included)	3,600.00
Equipment Rental (cat)	1,666.39
Drilling (415 feet) & additional road clearing	21,140.00
Drill Supervision & logging & sampling core	2,447.12
	<hr/>
	\$ 41,996.92
	<hr/> <hr/>

APPENDIX 1



GEOTRONICS SURVEYS LTD.
420-890 W. PENDER ST.
VANCOUVER, CANADA V6C 1J9
(604) 687-6671

September 20, 1980

Sutherland Resources Ltd.
1028-510 West Hastings Street
Vancouver, B.C.
V6B 1L8

Attention: P.J. Burjoski, Director

Dear Sirs:

SEISMIC REFRACTION SURVEY
DIAMOND DRILLING PROGRAM
BONNY CLAIM
POPLAR LAKE AREA, OMINECA M.D., B.C.

The interpretation of data from the seismic refraction survey carried out on the above-named project has been completed. The object of the survey was to determine the thickness of the overburden, or otherwise, depth to bed-rock for the purpose of aiding in the optimum location of diamond drill holes. The geophysical information presented herein is based on our best interpretation of field data which were collected according to generally accepted field procedures.

The procedure was as follows: twelve geophones were planted along the line of investigation at 15m intervals to give a spread length of 165m. The 'two-way, in line' seismic refraction method was used. The data were recorded from six energy points, one off each end, one at each end, and two along the length of the spread. An Exploration/Nimbus signal enhancement 12-channel 1210F seismic system

was used for recording. The field work was done on August 13th and 14th, 1980.

The line was located in the northern part of anomaly A, running in a S5⁰W direction as shown on Figure No. 1.

The seismic data were analyzed using an intercept delay time technique. Implementation of this method requires reverse refraction profiles with bedrock refractions emanating from a common point for at least two detectors. This rock overlap is necessary in order to obtain a true refractor velocity and travel time in the overburden independent of bedrock dip and/or surface irregularities. The off-end shot times are used to extrapolate the rock refraction from either end back to their respective shot locations. With this information and related overburden velocities, it is possible to compute the depth to bedrock not only below each shot point, but also below each detector. However, the computed depths below shot points should be considered slightly more accurate than those below detectors.

The results are drawn in profile form on the accompanying fold-out sheet at a scale of 1" = 50'. (1:600)

The results and comments are as follows.

The seismic refraction work has revealed a 3-layer case along the line surveyed.

The first layer has a velocity of 2700 feet/sec. and varies from 4 to 19 feet thick. It is semi-consolidated, surficial material.

The second layer has a velocity of 7800 feet/sec. and is very likely a fairly consolidated glacial till. Its

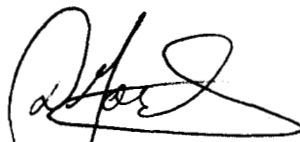
thickness varies from 14 to 79 feet.

The third layer, at a velocity of 9300 feet/sec., is quite likely bedrock of the Hazelton Group. The relatively low velocity would indicate sedimentary rocks.

The depths to the third layer along the line of investigation vary from 22 feet below geophone 10 to about 96 feet below geophone 5.

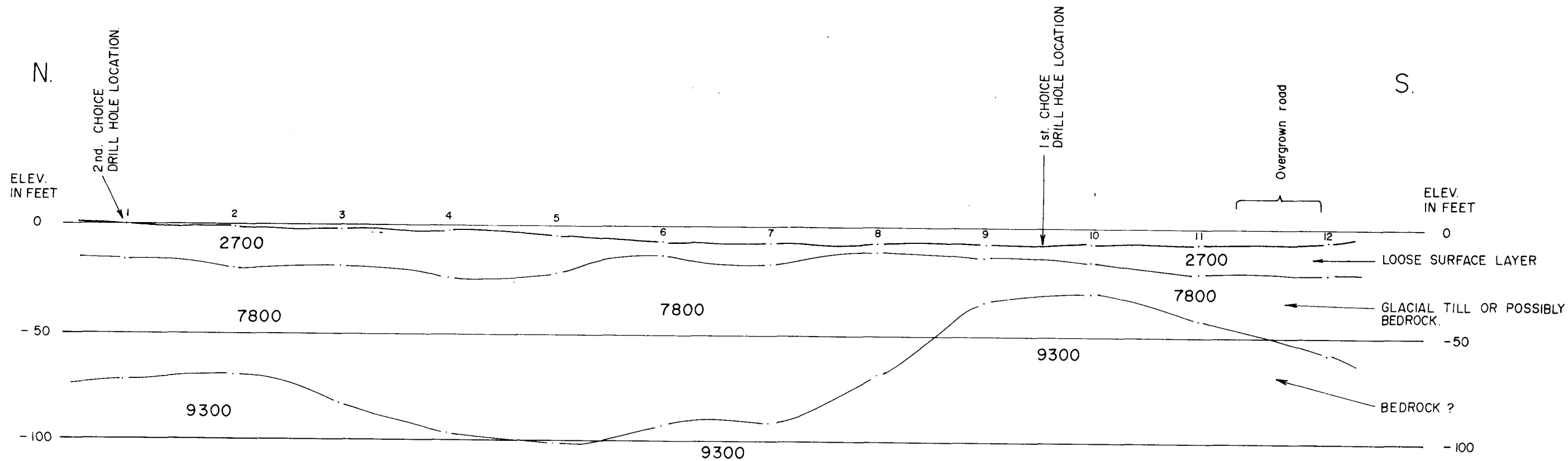
From the seismic results, the writer recommended two locations for drilling which are shown on the accompanying profile. Apparently, the first location between geophones 9 and 10 has been drilled. According to the diamond driller, at about the seismic-interpretted depth to the third layer, a very hard, consolidated material was encountered. The driller thought it was overburden, which is possible, though the velocity is quite high for overburden, even though it is quite hard and consolidated. Therefore, it is possible it may have been bedrock that was somewhat weathered.

Respectfully submitted,
GEOTRONICS SURVEYS LTD.

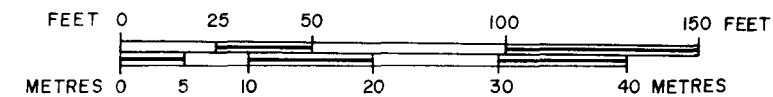


David G. Mark,
Geophysicist

APPENDIX 2

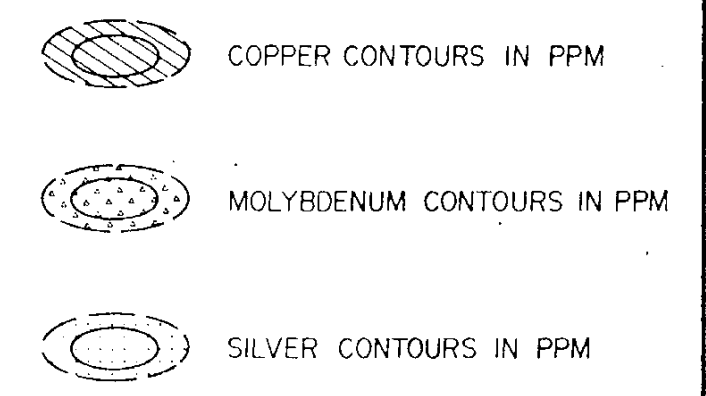
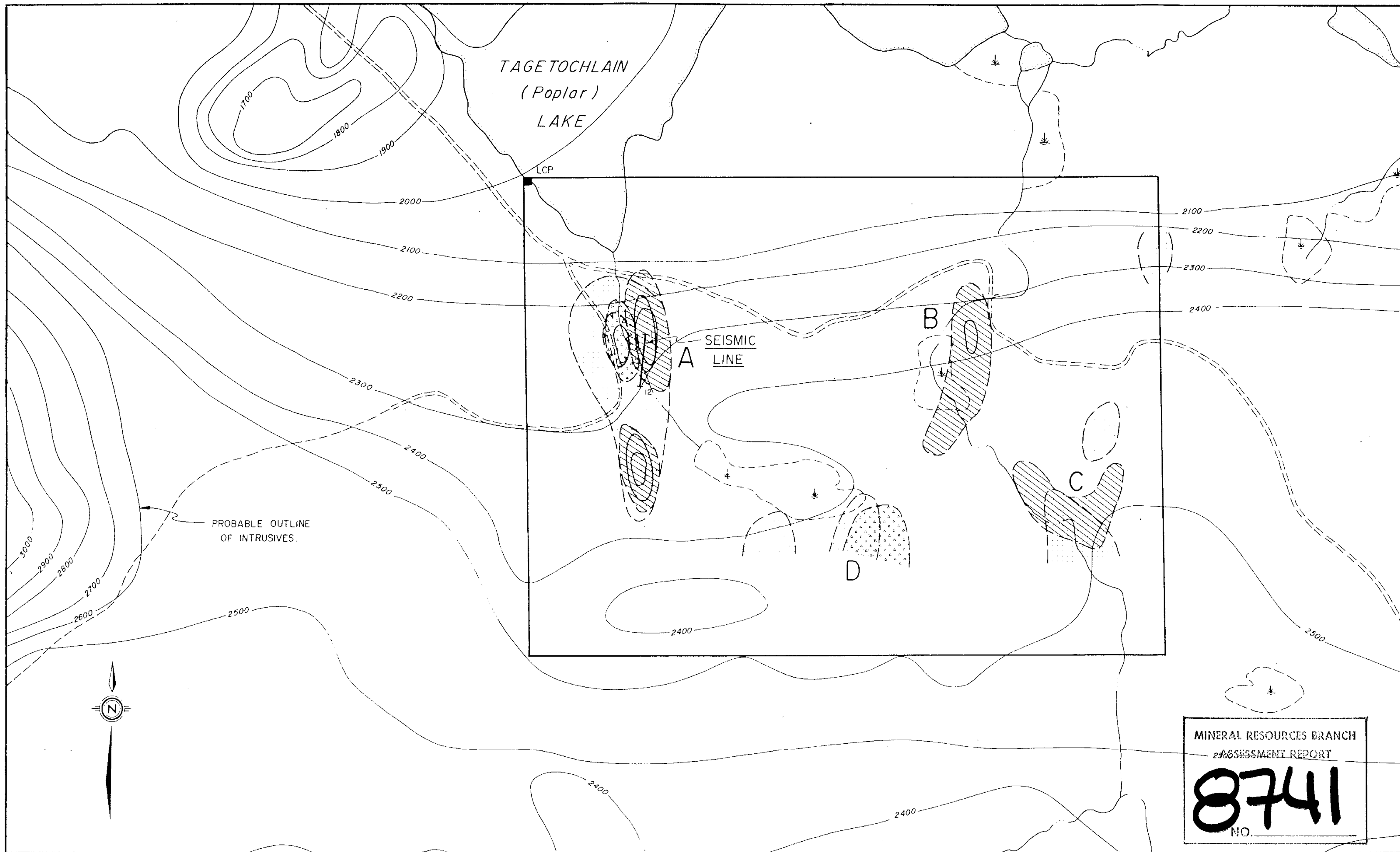


DIRECTION OF LINE - S. 5° W. (185° E)



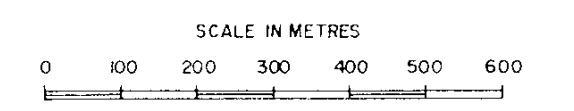
MINERAL RESOURCES BRANCH
ASSESSMENT REPORT
8741
NO. _____

GEOTRONICS SURVEYS LTD.			
SUTHERLAND RESOURCES LTD.			
BONNIE CLAIM			
POPULAR LAKE AREA, OMINECA M.D., B.C.			
<i>SEISMIC REFRACTION STUDY</i>			
<i>PROFILE SL.-1</i>			
Drawn By: D.G.M.	Date: Aug., 1980	Scale: 1" = 50' (1:600)	Fig. No. 2



PARAMETERS

	Cu in ppm	Mo in ppm	Ag in ppm
MEAN BACKGROUND VALUE	10	1	0.1
SUB-ANOMALOUS THRESHOLD VALUE	17	2	0.2
ANOMALOUS THRESHOLD VALUE	29	3	0.3
CONTOURS			
SUB-ANOMALOUS	17	1.5	0.2
ANOMALOUS	28	2.5	0.4



GEOTRONICS SURVEYS LTD.
SUTHERLAND RESOURCES LTD.
BONNY CLAIM
POPLAR LAKE AREA, OMINICA MD., BC.

MINERAL RESOURCES BRANCH
ASSESSMENT REPORT
8741
NO.

COMPILATION MAP

Drawn By: K K.	Date: JUNE, 1980	Scale: 1: 10,000	Fig. No. 3
-------------------	---------------------	---------------------	---------------

W. G. Timmins Exploration & Development Ltd.

CONSULTING GEOLOGISTS

#201, 909 - 5th Ave. S.W.
Calgary, Alberta T2P 3G5
(403) 264-1415
Telex 03-822764

September 8, 1980.

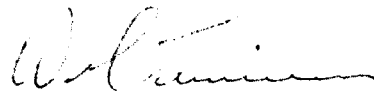
Sutherland Resources Ltd.
1028-510 West Hsatings St,
Vancouver, B.C.

Gentlemen,

Enclosed please find four copies, signed and sealed,
of drill logs for drill holes #1 to 6 drilled on the
Bonny claims near Houston, B.C., Omenica Mining Division.

Since all holes intersected only gravel and red clay,
and did not penetrate bedrock, no assays were taken.

Your very truly,



W.G. Timmins P. Geol.

CLAIM NO.

DIAMOND DRILL RECORD

PROPERTY Bonny Claims
Sutherland Resources

HOLE NO. #1

LATITUDE ELEVATION 860 metres BEARING 90° DEPTH 75 ft STARTED Aug. 3, 1980 COMPLETED Aug. 3, 1980

DEPARTURE SECTION DIP DRILLED BY F. Turpin LOGGED BY

DEPTH FEET	FORMATION	SAMPLE NO.	FROM	TO	WIDTH	ASSAYS			
0 - 75'	Gravel and clay								
	End of hole 75'								

W. Hammaris

F

WESTERN MINER PRESS LTD.
STANDARD FORM NO. 502

CLAIM NO.

DIAMOND DRILL RECORD

PROPERTY Bonny Claims Sutherland Resources HOLE NO. 1A

LATITUDE ELEVATION 860 metres BEARING 90° DEPTH 86 ft STARTED Aug 4th, 1980 COMPLETED Aug 4 1980

DEPARTURE SECTION DIP DRILLED BY LOGGED BY

DEPTH FEET	FORMATION	SAMPLE NO.	FROM	TO	WIDTH	ASSAYS			
0 - 86'	Gravel and clay								
	End of hole 86'								

W. K. ...

CLAIM NO.

DIAMOND DRILL RECORD

PROPERTY Bonny claims Sutherland Resources HOLE NO. #2

LATITUDE ELEVATION 860 metres BEARING 90° DEPTH 72 ft STARTED Aug 14, 1980 COMPLETED Aug 14, 1980

DEPARTURE SECTION DIP DRILLED BY F. Turpin LOGGED BY

DEPTH FEET	FORMATION	SAMPLE NO.	FROM	TO	WIDTH	ASSAYS			
0 - 72'	Gravel and clay								
	End of hole 72'								

W. Turpin

CLAIM NO.

DIAMOND DRILL RECORD

PROPERTY Bonny Claims
Sutherland Resources

HOLE NO. #3

LATITUDE ELEVATION 860 metres BEARING 90° DEPTH 50 ft. STARTED Aug. 15, 1980 COMPLETED Aug. 15, 1980

DEPARTURE SECTION DIP DRILLED BY F. Turpin LOGGED BY

DEPTH FEET	FORMATION	SAMPLE NO.	FROM	TO	WIDTH	ASSAYS			
0 - 50	Gravel and clay								
	End of hole 50'								

W. H. Turpin

CLAIM NO. _____ **DIAMOND DRILL RECORD** PROPERTY Bonny Claims HOLE NO. #4
 Sutherland Resources Ltd.
 LATITUDE _____ ELEVATION 860 metres BEARING 90° DEPTH 40 ft. STARTED Aug. 16/80 COMPLETED Aug. 17/80
 DEPARTURE _____ SECTION _____ DIP _____ DRILLED BY F. Turpin LOGGED BY _____

DEPTH FEET	FORMATION	SAMPLE NO.	FROM	TO	WIDTH	ASSAYS			
0 - 40'	Gravel and clay								
	End of hole 40'								

W. H. ...

F. Turpin

CLAIM NO.

DIAMOND DRILL RECORD

PROPERTY Bonny Claims HOLE NO. #5
Sutherland Resources Ltd.

LATITUDE ELEVATION 860 metres BEARING 90° DEPTH 45 ft STARTED Aug. 18/80 COMPLETED Aug. 18/80

DEPARTURE SECTION DIP DRILLED BY F. Turpin LOGGED BY

DEPTH FEET	FORMATION	SAMPLE NO.	FROM	TO	WIDTH	ASSAYS			
0 - 45'	Gravel and clay								
	End of hole 45'								

F. Turpin

WESTERN MINER-PRESS LTD.
STANDARD FORM NO. 502

CLAIM NO.

DIAMOND DRILL RECORD

PROPERTY Bonny Claims
Sutherland Resources Ltd.

HOLE NO. #6

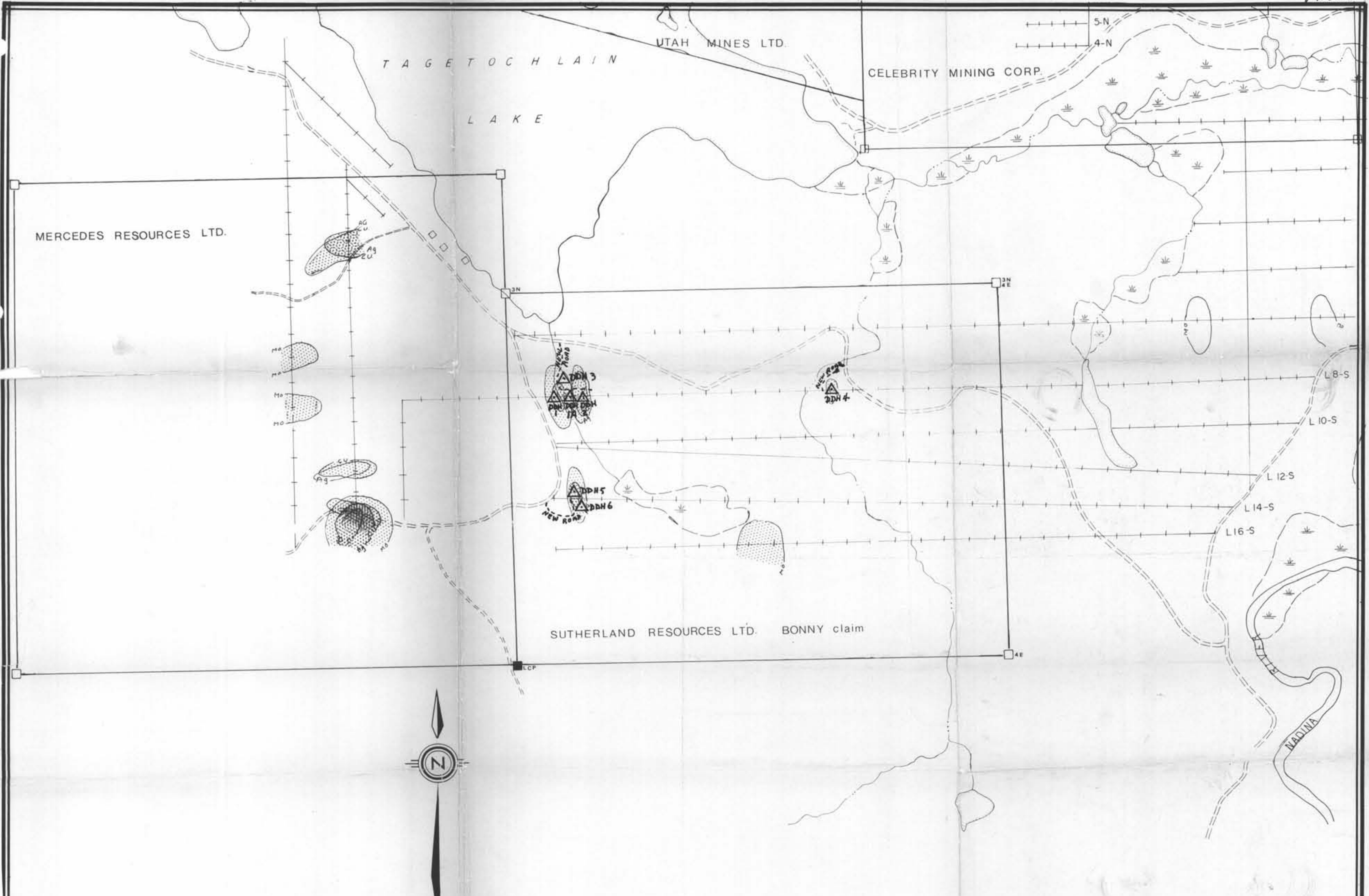
LATITUDE ELEVATION 860 metres BEARING 90° DEPTH 47 ft STARTED Aug. 19/80 COMPLETED Aug. 19/80

DEPARTURE SECTION DIP DRILLED BY F. Turpin LOGGED BY

DEPTH FEET	FORMATION	SAMPLE NO.	FROM	TO	WIDTH	ASSAYS			
0 - 47'	Gravel and clay								
	End of hole 47'								

F. Turpin

WESTERN MINER-PRESS LTD. STANDARD FORM NO. 502



3741

MINERAL RESOURCES BRANCH
ASSESSMENT REPORT
8741
NO.

DRILL HOLE LOCATION MAP
AUG 1980
ALL D.D.H. COLLARD AT 90°

SUTHERLAND RESOURCES LTD.				
BONNY Claim, Omernica M.D. B.C.				
Poplar Lake property				
GEOCHEM. COMPOSITE MAP				
Cu., Mo., Ag.				
scale	date	job no.	sheet no.	drawn by
1:10,000	Aug 1980			
COLUMBIA GEOPHYSICAL SERVICES LTD.				