

'80 - 803 - 8749

AMARK EXPLORATIONS LTD.

ASSESSMENT REPORT

DIAMOND DRILLING SURVEYS

ALCO MINERAL CLAIMS GROUP

MAMQUAM RIVER - SQUAMISH AREA

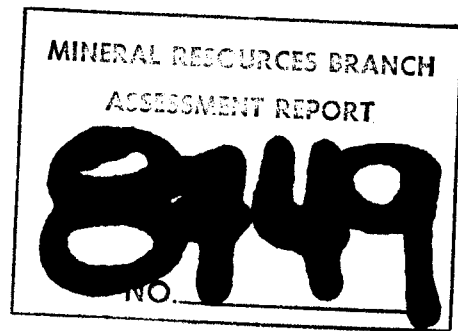
VANCOUVER MINING DIVISION

BRITISH COLUMBIA

Latitude: 49° 40'^{2.5} North; Longitude: 123° 53'⁶ West 92G/10W
 Field Surveys: William J. Weymark, P. Eng.
 Diamond Drill Tests, Connors Drilling, Kamloops, B. C.
 Assays: Can Test Ltd, Vancouver, B. C.
 Interpretation: William J. Weymark P. Eng.

20th November 1980

WEYMARK ENGINEERING LTD
 1063 Balfour Avenue
 Vancouver, British Columbia
 604 - 736 6812



AMARK EXPLORATIONS LTD.

ASSESSMENT REPORT

DIAMOND DRILLING SURVEYS

ALCO MINERAL CLAIMS GROUP
MAMQUAM RIVER - SQUAMISH AREA

VANCOUVER MINING DIVISION
BRITISH COLUMBIA

CONTENTS

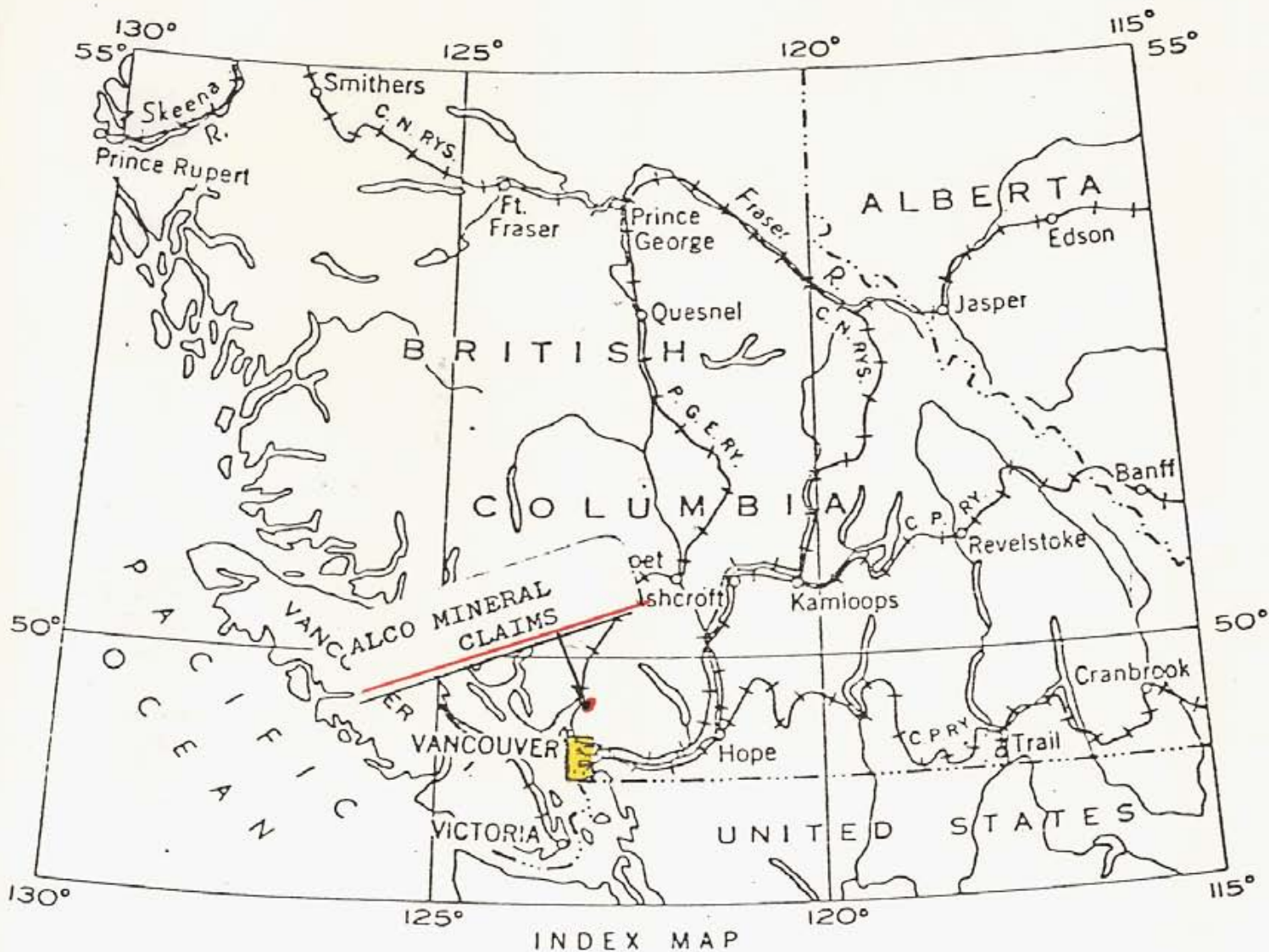
	<u>Page</u>
1.0 Property	1
2.0 Access and Location	1
3.0 Geology --.....	2
4.0 Diamond Drill Tests	2
5.0 Recommendations	3

APPENDICES

- Annex - A Invoice, Connors Drilling
- Annex - B Cost Distribution
- Annex - C Log Diamond Drill Hole 80 - C - 1
and Assays

ILLUSTRATIONS

- Figure: 1 Frontispiece
- Figure: 2 Claims Location
- Figure: 2A Access and Topography
- Figure: 3 Geology
- Figure: 4 Diamond Drill Hole - Locations



INDEX MAP

LOCATION

ALCO MINERAL CLAIMS GROUP
 VANCOUVER MINING DIVISION
 MAMQUAM RIVER AREA, SQUAMISH
BRITISH COLUMBIA

3.0 Geology:

Geological References are Map 42 - 1963 and Map 1151A, Geology Pitt Lake - 1965 accompanying Memoir 335, Vancouver North, Coquitlam and Pitt Lake Map-Areas, J. A. Reddick, Geological Survey of Canada, 1965, See Figure: - 3

As described in the Noranda REport No 4917, the Geology may be described as:-

" the geology of the area consists of dykes and irregular intrusives of granite (granodiorite and quartz monzonite) rock intruded into an andesite - diorite - quartz-diorite complex. The area of intrusion is surrounded by a propylitic halo which has a smaller zone within it of quartz and K feldspar alteration. Pyrite, chalcopyrite malachite, and minor molybdenite and bornite occur mainly along fractures and in some quartz veins within the inner alteration zone. Pyrite is in the Propylitic zone."

Base Formations are Plutonic Rocks of Mezoic - Cretaceous and earlier periods,- also (Cenozoic) being Leucocratic - granites, grano-diorites, diorites, granulites and, in places, migmatites. Overlying these plutonic rocks are tuffs, andesites, sandstones-greywacke, basalts of the Gambier Group. Basalt and Andesitic dykes intrude these rock masses.

There are several North-South trending faults, shear and fracture zones within the area and, in general, these provide the courses for many streams and creeks on the property. The mafic content of the rock varies from mass to mass and within and near these fracture-shear zones. Hornblende, Biotite and Chlorites alteration composition varies from 90 - 20% and quartz feldspar from 20 - 90%.

The metallic minerals of interest are Copper and Molybdenum,- sulphides and oxides. Pyrite is generally associated with these metallics and also, paragenetically and syngenetically sequences.

Field geological mapping was done on a scale of 400 Feet = one Inch, using the same grid layout as for the Geochemical and Geo-Physical Surveys. The outcrop map is given on Figure - 4.

The areas of interest are the quartz-diorite and K feldspar alteration zones within the base diorite - granodiorite masses. Further detailed investigations are required to define the boundaries and areas of these masses. Figure - 5 illustrates the geochemical - geophysical anomalous zones.

4.0 Diamond Drill Test:

Seven Drill holes, HQ-NQ were programmed for the field season however, due to difficult drilling conditions and the lack of experienced drill crew, only one hole was partially completed. All the back-up support involving surveys and camp facilities were emplaced for the programme.

Drill hole 80 - C - 1 was drilled to a depth of 124 feet, the Log for which is given on Annex - C. Drill Costs are given on Annex - A, and the Assay results on Annex C- Reverse side. The Hole had to be abandoned because of drilling conditions.

Costing is given on Annex - B.

3.0 Geology:

Geological References are Map 42 - 1963 and Map 1151A, Geology Pitt Lake - 1965 accompanying Memoir 335, Vancouver North, Coquitlam and Pitt Lake Map-Areas, J. A. Reddick, Geological Survey of Canada, 1965, See Figure: - 3

As described in the Noranda REport No 4917, the Geology may be described as:-

" the geology of the area consists of dykes and irregular intrusives of granite (granodiorite and quartz monzonite) rock intruded into an andesite - diorite - quartz-diorite complex. The area of intrusion is surrounded by a propylitic halo which has a smaller zone within it of quartz and K feldspar alteration. Pyrite, chalcopyrite malachite, and minor molybdenite and bornite occur mainly along fractures and in some quartz veins within the inner alteration zone. Pyrite is in the Propylitic zone."

Base Formations are Plutonic Rocks of Mezoic - Cretaceous and earlier periods, - also (Cenozoic) being Leucocratic - granites, grano-diorites, diorites, granulites and, in places, migmatites. Overlying these plutonic rocks are tuffs, andesites, sandstones-greywacke, basalts of the Gambier Group. Basalt and Andesitic dykes intrude these rock masses.

There are several North-South trending faults, shear and fracture zones within the area and, in general, these provide the courses for many streams and creeks on the property. The mafic content of the rock varies from mass to mass and within and near these fracture-shear zones. Hornblende, Biotite and Chlorites alteration composition varies from 90 - 20% and quartz feldspar from 20 - 90%.

The metallic minerals of interest are Copper and Molybdenum, - sulphides and oxides. Pyrite is generally associated with these metallics and also, paragenetically and syngenetically sequences.

Field geological mapping was done on a scale of 400 Feet = one Inch, using the same grid layout as for the Geochemical and Geophysical Surveys. The outcrop map is given on Figure - 4.

The areas of interest are the quartz-diorite and K feldspar alteration zones within the base diorite - granodiorite masses. Further detailed investigations are required to define the boundaries and areas of these masses. Figure - 5 illustrates the geochemical - geophysical anomalous zones.

4.0 Diamond Drill Test:

Seven Drill holes, HQ-NQ were programmed for the field season however, due to difficult drilling conditions and the lack of experienced drill crew, only one hole was partially completed. All the back-up support involving surveys and camp facilities were emplaced for the programme.

Drill hole 80 - C - 1 was drilled to a depth of 124 feet, the Log for which is given on Annex - C. Drill Costs are given on Annex - A, and the Assay results on Annex C- Reverse side. The Hole had to be abandoned because of drilling conditions.

Costing is given on Annex - B.

3.0 Geology:

Geological References are Map 42 - 1963 and Map 1151A, Geology Pitt Lake - 1965 accompanying Memoir 335, Vancouver North, Coquitlam and Pitt Lake Map-Areas, J. A. Reddick, Geological Survey of Canada, 1965, See Figure: - 3

As described in the Noranda REport No 4917, the Geology may be described as:-

" the geology of the area consists of dykes and irregular intrusives of granite (granodiorite and quartz monzonite) rock intruded into an andesite - diorite - quartz-diorite complex. The area of intrusion is surrounded by a propylitic halo which has a smaller zone within it of quartz and K feldspar alteration. Pyrite, chalcopyrite malachite, and minor molybdenite and bornite occur mainly along fractures and in some quartz veins within the inner alteration zone. Pyrite is in the Propylitic zone."

Base Formations are Plutonic Rocks of Mezoic - Cretaceous and earlier periods, - also (Cenozoic) being Leucocratic - granites, grano-diorites, diorites, granulites and, in places, migmatites. Over-laying these plutonic rocks are tuffs, andesites, sandstones-grey-wacke, basalts of the Gambier Group. Basalt and Andesitic dykes intrude these rock masses.

There are several North-South trending faults, shear and fracture zones within the area and, in general, these provide the courses for many streams and creeks on the property. The mafic content of the rock varies from mass to mass and within and near these fracture-shear zones. Hornblende, Biotite and Chlorites alteration composition varies from 90 - 20% and quartz feldspar from 20 - 90%.

The metallic minerals of interest are Copper and Molybdenum, - sulphides and oxides. Pyrite is generally associated with these metallics and also, paragenetically and syngenetically sequences.

Field geological mapping was done on a scale of 400 Feet = one Inch, using the same grid layout as for the Geochemical and Geo-Physical Surveys. The outcrop map is given on Figure - 4.

The areas of interest are the quartz-diorite and K feldspar alteration zones within the base diorite - granodiorite masses. Further detailed investigations are required to define the boundaries and areas of these masses.

4.0 Diamond Drill Test:

Seven Drill holes, HQ-NQ were programmed for the field season however, due to difficult drilling conditions and the lack of experienced drill crew, only one hole was partially completed. All the back-up support involving surveys and camp facilities were emplaced for the programme.

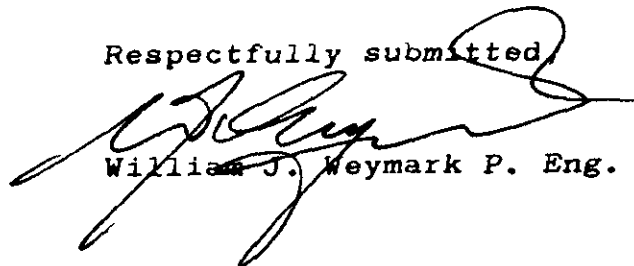
Drill hole 80 - C - 1 was drilled to a depth of 124 feet, the Log for which is given on Annex - C. Drill Costs are given on Annex - A, and the Assay results on Annex C- Reverse side. The Hole had to be abandoned because of drilling conditions.

Costing is given on Annex - B.

5.0 Recommendations:

On the basis of the results obtained from this partial Test, it is considered that completion of the proposed programme should be undertaken. The presence of Copper and Molybdenum in the sludge confirms the distribution of these metallics. Bulk sampling should be carried out at the same time as diamond drilling.

Respectfully submitted,



William J. Weymark P. Eng.

20 November 1980

CERTIFICATE

I, William James Weymark, P. Eng., Consulting Engineer, President of Weymark Engineering Ltd., of the District of West Vancouver, of the Province of British Columbia, hereby certify that:

1. I am a graduate of Mining Engineering of Queen's University, Kingston, Ontario, B. Sc., 1940 and have been practising my profession for thirty-five years.
2. I am a member of the Association of Professional Engineers of the Province of British Columbia, the Consulting Engineers Division of the Association of Professional Engineers of British Columbia, The Consulting Engineers of Canada.
3. I am a practising Consulting Engineer and reside at 3310 Westmount Road, West Vancouver, British Columbia.
4. I am a member of the Canadian Institute of Mining and Metallurgy and of the American Institute of Mining, Metallurgical and Petroleum Engineers, and of the American Geophysical Union.
5. I have no direct or indirect interest whatsoever in Amark Explorations Ltd., or in the Alco Mineral Claims, nor do I expect any interest, direct or indirect in this organization or property or any affiliate or any security of the company.
6. The findings of the accompanying Report are based on my personal examination of the Alco Mineral Property in 1978 - 1980 and direction of the Drilling and related Programmes on the Cath Mineral Claim as well as review of all available information relating to the Property and preparation of this Report.

DATED at West Vancouver, British Columbia, this 20 Day of November 1980.


William J. Weymark P. Eng.
President
Weymark Engineering Ltd.

ILLUSTRATIONS

10



Division of
Bow Valley Resource Services Ltd.

P.O. BOX 3340 - 2007 WEST TRANS-CANADA HIGHWAY, KAMPLOOPS, B.C. V2C 6B9
AREA CODE 604/374-3366

ANNEX - A

Amark Exploration Ltd.
201 - 355 Burrard Street
Vancouver, B.C.
V6E 2G8

INVOICE NO: 10621
DATE: September 11, 1980
Job 21-049

SURFACE DIAMOND DRILLING
NEAR SQUAMISH, B.C.
AUGUST 16 - 27, 1980

DEMOBILIZATION (Lump Sum) 1,500.00

FOOTAGE FEE

D.D. Hole 80-C-1	14 - 101'	87' at 28.00	2,436.00	
	101 - 124'	23' at 22.00	<u>506.00</u>	2,942.00
		<u>110'</u>		

FIELD COST WORK

<u>DATE</u>	<u>MAN HRS.</u>	<u>DRILL HRS.</u>	<u>SHIFT HRS.</u>	<u>REMARKS</u>	
Aug. 16/80	4	2	-	Ream HW casing	
"	-	-	7	Standby time	
18	-	-	2	" "	
19	4	2	-	Ream HW casing	
"	2	1	-	Mix mud	
21	12	6	-	Ream & reduce to NQ	
22	20	10	-	Cementing	
23	20	10	-	"	
24	20	10	-	"	
25	18	9	-	Drill cement	
	<u>100</u>	<u>50</u>	<u>9</u>		
	Total man hours		100 at 25.00	2,500.00	
	Total drill hours		50 at 25.00	1,250.00	
	Total standby time		9 at 75.00	<u>675.00</u>	4,425.00

10621

ANNEX - B

COST DISTRIBUTION

1.	Connors Drilling	\$8,870.52
2.	Mike Stephen 717 925 721 1717 Haro Street #305 Vancouver, B. C. 11/8/80 - 28/8/80	959.00
3.	J. Weymark - 717 112 510 3310 Westmount Road West Vancouver, B. C. 1/8/80 - 30/8/80	840.00
4.	Weymark Engineering Ltd. Field Surveys and Layouts Control and Drilling Supervision. Office - Location of Drill Holes, Assembly - collation - plotting- fairdrawing and interpretation of data and report preparation and submission	3,200.00
5.	4 x 4 Truck Rental Cana Truck Rentals and Kram Enterprises Ltd	168.50 548.75
6.	Chemical Analysis, Cantest Ltd 1650 Pandora St. Vancouver	<u>36.00</u>

Total

\$14,622.77


William J. Weymark P. Eng.

ILLUSTRATIONS

4.



can test ltd.

1650 PANDORA STREET, VANCOUVER, B.C. V5L 1L6 • TELEPHONE 254-7278 • TELEX 04-54210

Report On Rock Geochem Analysis File No. 8232D

Reported To Weymark Engineering Report No. _____
1063 Balfour P.O. # _____
Vancouver, B.C. Date October 31/80

Attention: _____

We have tested eight (8) samples submitted by you and report as follows:

RESULTS OF TESTING:

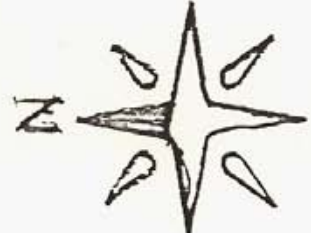
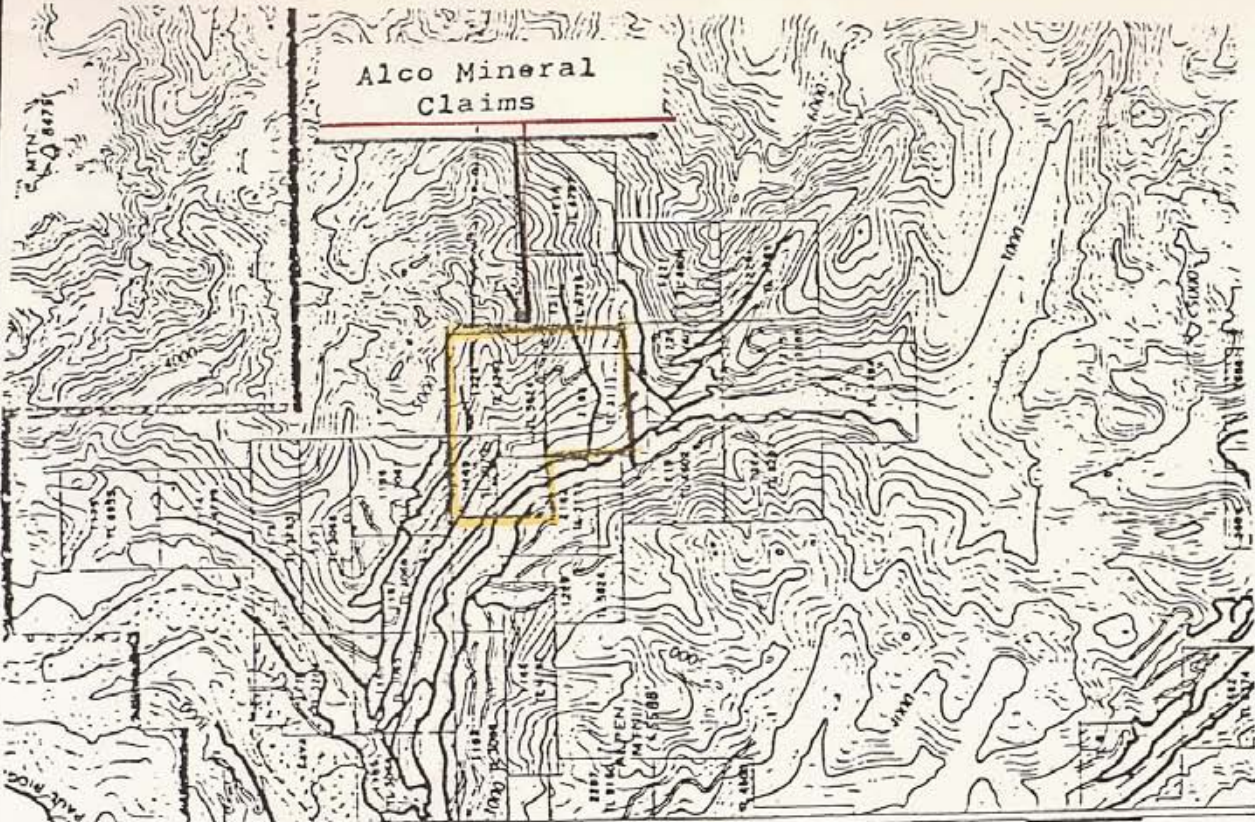
SAMPLE IDENTIFICATION "ALCO - 80 - C - 1"	COPPER	MOLYBDENUM	
	ppm Cu	ppm	Mo
40' - 45'	166.	4.	
45' - 50'	161.	L 1.	
60' - 65'	151.	6.	
65' - 70'	160.	7.	
70' - 75'	147.	5.	
75' - 80'	191.	7.	
80' - 85'	152.	5.	
85' - 90'	139.	9.	

L - Less than

CAN TEST LTD.

F.C. Burgess
Chief Assayer

/cs



Reference: Sheet 92G/NW; Squamish Sheet 92 G/NE Pitt River B. C.

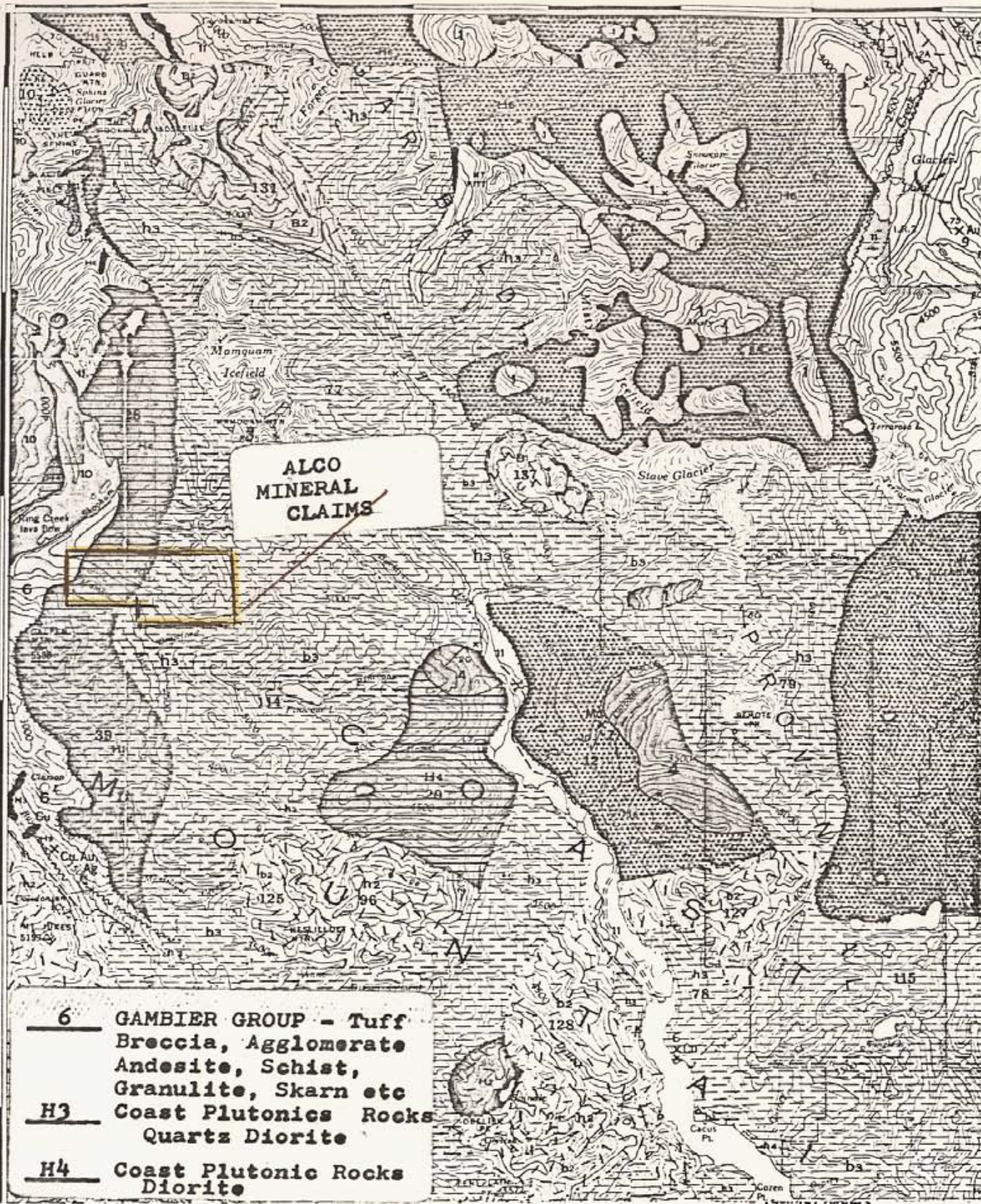
AMARK EXPLORATIONS LTD.	
WEYMARK ENGINEERING LTD. CONSULTING ENGINEERS WEST VANCOUVER, BRITISH COLUMBIA CANADA	
ALCO MINERAL CLAIMS GROUP ACCESS AND TOPOGRAPHY	
DATE 2/1/79	SCALE: One In = 2 mi
SUBMITTED WJW	CHECKED WJW
DRAWN WJW	FILE No. AM - 1
TRACED WJW	CONTRACT AM - 1

FIGURE: 2A

50'00

45

30



REFERENCE: Memoir 335 Geological Survey of Canada, Vancouver North Coquitlam and Pitt Lake Map-Areas, B. C. J. A. Roddick, 1965

**ALCO MINERAL CLAIMS GROUP
SQUAMISH - MAMQUAM RIVER AREA**

GEOLOGY

Scale: 1:253,440 1" = 4 Miles

FIGURE: 3

Latitude: 49° 42.6' North
 Longitude: 122° 56.2' West
 Reference Map: M92G/10W & 92^{Al}G/10 E
 Corner Post:
 Claim Alco-2 90(5)

SCALE: 1: 15,840

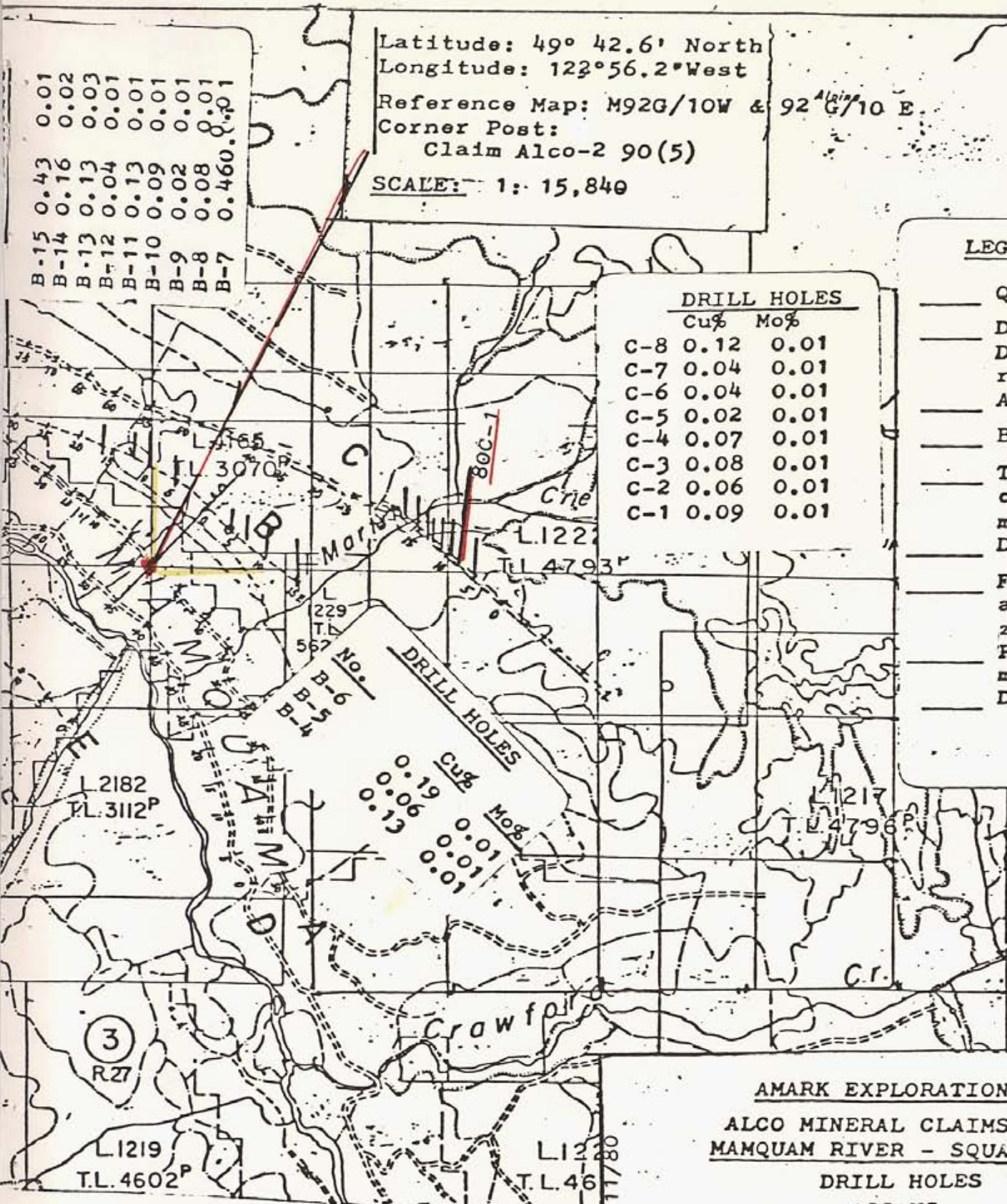
B-15 0.43 0.01
 B-14 0.16 0.02
 B-13 0.13 0.03
 B-12 0.04 0.01
 B-11 0.13 0.01
 B-10 0.09 0.01
 B-9 0.02 0.01
 B-8 0.08 0.01
 B-7 0.460 0.01

DRILL HOLES

	Cu%	Mo%
C-8	0.12	0.01
C-7	0.04	0.01
C-6	0.04	0.01
C-5	0.02	0.01
C-4	0.07	0.01
C-3	0.08	0.01
C-2	0.06	0.01
C-1	0.09	0.01

LEGEND

- Quartz Diorite
- Diorite, Granite
- Diorite and related
- Andesite
- Basalt
- Tuffs and Volcanic - Sedimentary
- Dykes
- Faults - Shear-fracture zones
- Py, Cp, Mo mineralization
- Drill Holes



AMARK EXPLORATIONS LTD
ALCO MINERAL CLAIMS GROUP
MAMQUAM RIVER - SQUAMISH AREA
DRILL HOLES
ASSAYS

Drwn - WJW Chkd - WJW
 Date: 15 December 1979
 Scale: As Shown

Rev: 20/11/80

92-G-10-1

Latitude: 49° 42.6' North
 Longitude: 122° 56.2' West
 Reference Map: M92G/10W & 92^{Aliso}G/10 E
 Corner Post:
 Claim Alco-2 90(5)
 SCALE: 1: 15,840

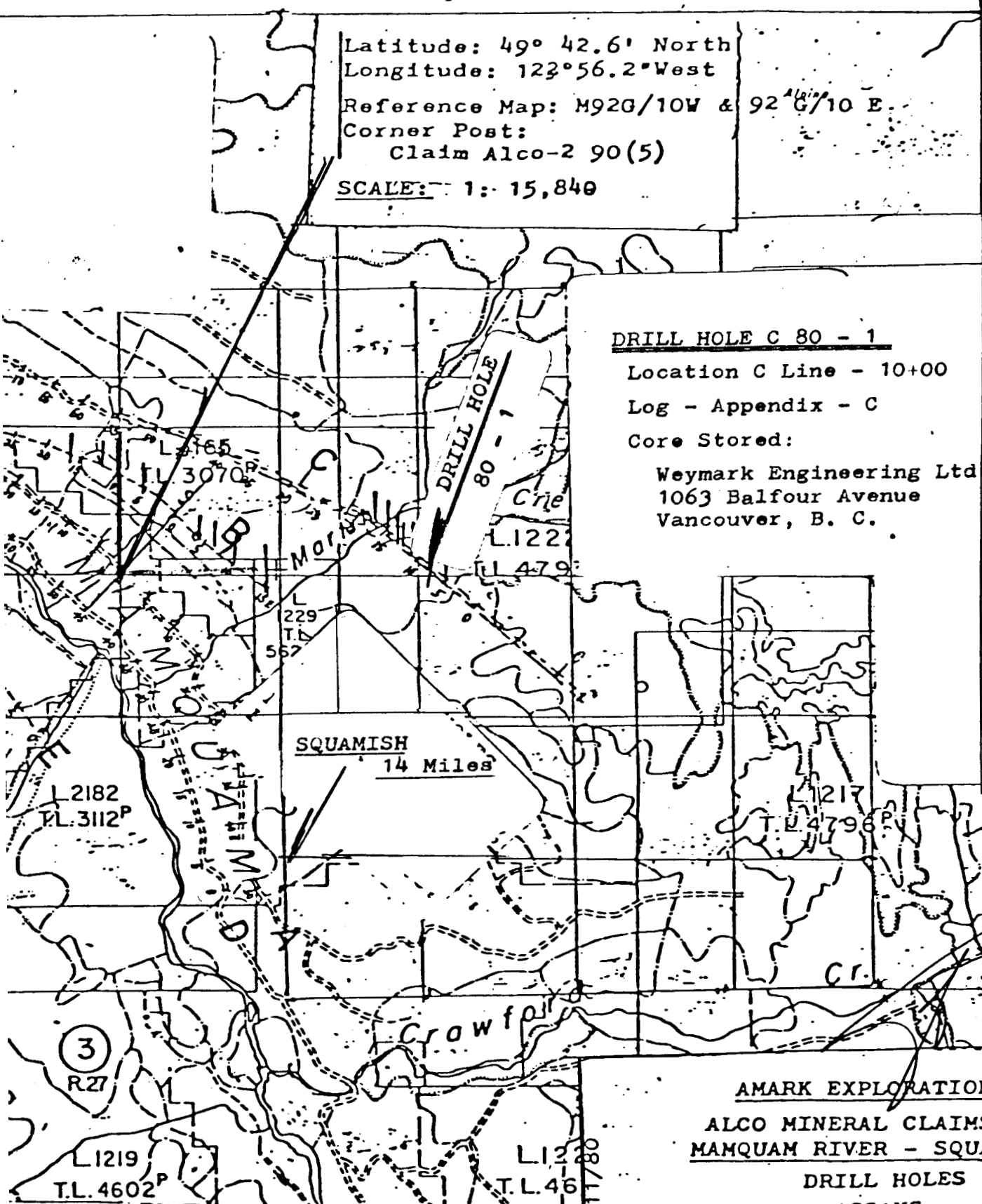
DRILL HOLE C 80 - 1

Location C Line - 10+00

Log - Appendix - C

Core Stored:

Weymark Engineering Ltd
 1063 Balfour Avenue
 Vancouver, B. C.



92-G-10-1

AMARK EXPLORATIONS LTD
ALCO MINERAL CLAIMS GROUP
MAMQUAM RIVER - SQUAMISH AREA
 DRILL HOLES
 ASSAYS

Drwn - WJW Chkd - WJW
 Date: 15 December 1979
 Scale: As Shown

Reference : Sheet 92G-NW; Squamish
 Sheet 92GNE; Pitt River