

MAPS TO ACCOMPANY
SMD WHITING CREEK PROJECT
GEOLOGICAL, GEOCHEMICAL,
GEOPHYSICAL & DRILLING REPORT
WHIT 1-6 CLAIMS

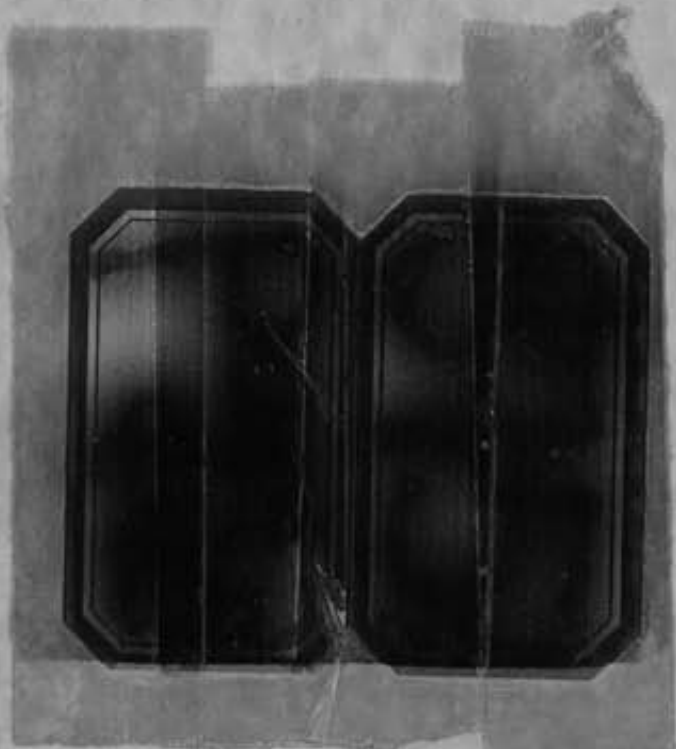
'80-#885'

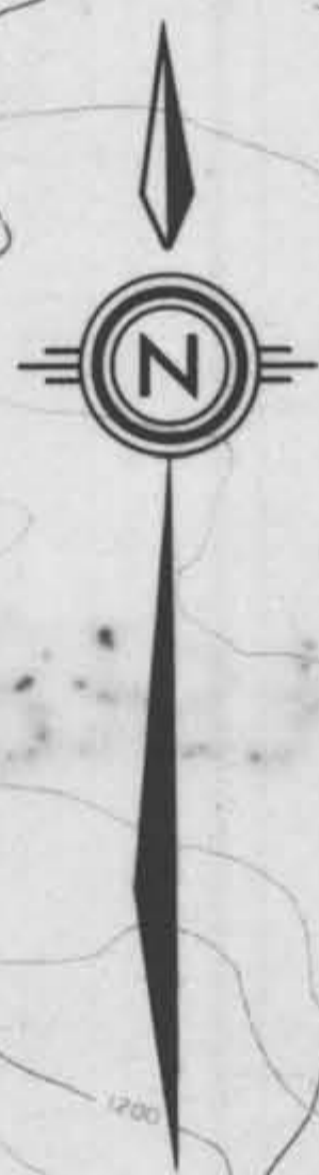
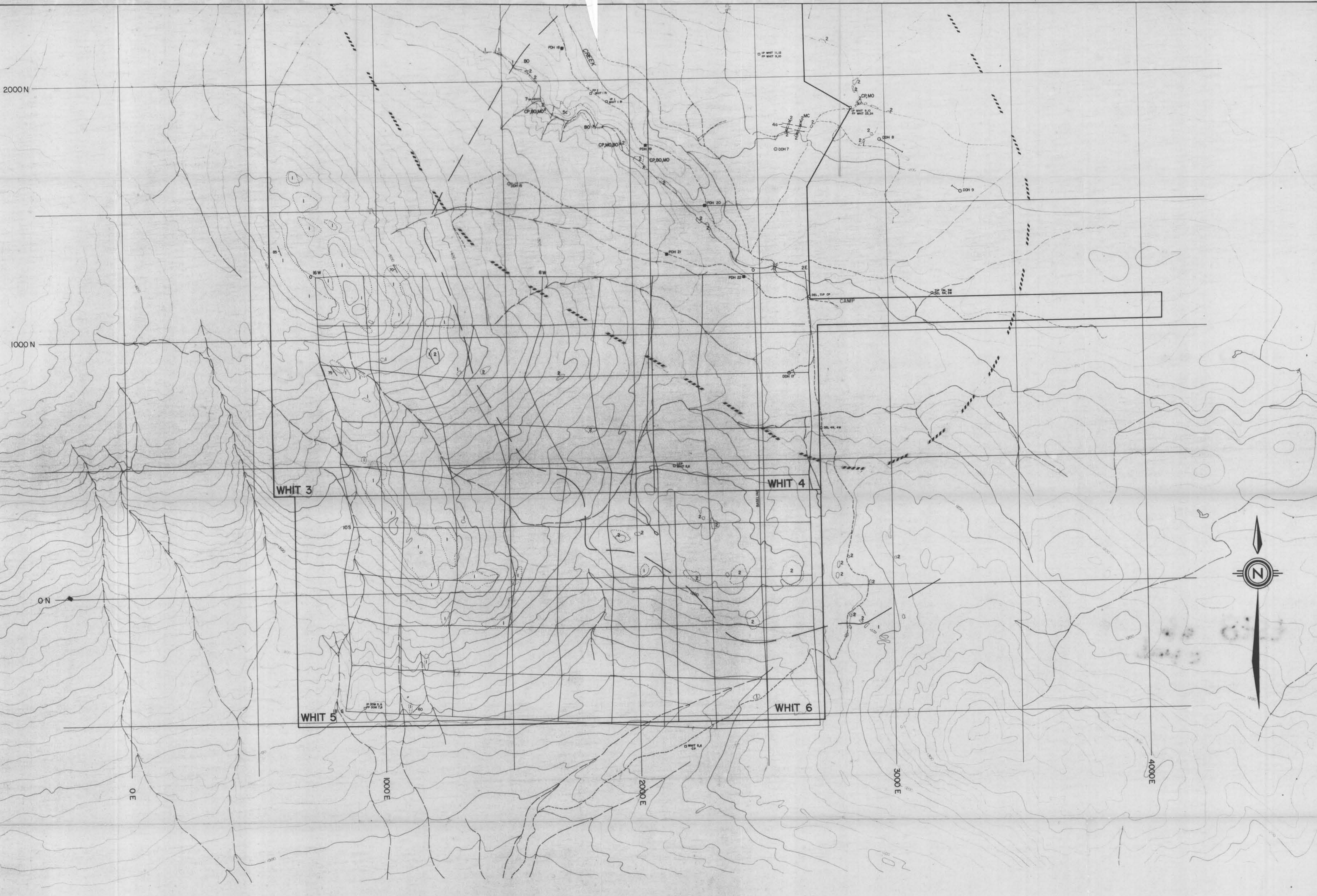
#8757

R. Cann
R. Matthews

December 1980

8757
2 of 3





LEGEND

- 60 Bedding attitude & dip
- Outcrop
- Geological contact; defined, approx.
- ⊗ Intense crackle zone
- ⊕ Breccia
- ⊖ Trench
- Diamond drill hole
- Percussion drill hole
- Claim post
- CP x Mineralization
- BO - Bornite; MO - Molybdenite
- MC - Malachite; CV - Covellite
- CP - Chalcopyrite
- Limit of pyrite; defined, assumed

- LATE CRETACEOUS OR TERTIARY
- 10 Lamprophyre or diabase
 - 9 Andesite
 - 8 Felsite
 - 7 Porphyritic andesite
 - 6 Feldspar hornblende biotite porphyry
 - 5 a- Crowded monzonite porphyry b- breccia c- granite
 - 4 a- Quartz monzonite porphyry b- breccia
- LATE CRETACEOUS
- 3 Aplitic quartz porphyry
 - 2 Biotite hornblende granodiorite
- LOWER JURASSIC
HAZELTON GROUP
- 1 TELKWA FM. - crystal tuff, lapilli tuff, volcanic breccia

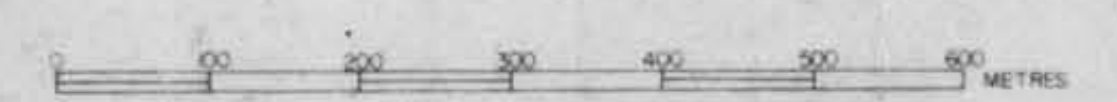
Part 2
90

MINERAL RESOURCES BRANCH
ASSESSMENT REPORT
8757

MINING CO. LTD.

**GEOLOGY
& DRILL SITES**

PROJECT	WHITING CREEK	DISPOSITION	WHIT 1-6
SITE	95-E-11,14	SCALE	1:5000
WORK BY	R.M. CANN	DATE	1980
DRAWN	K. KOSSER	MAD	JA





5000 N

4000 N

3000 N

2000 N



LEGEND

- Bedding attitude & dip
- Outcrop
- Geological contact; defined, approx.
- Intense crackle zone
- Breccia
- Trench
- Diamond drill hole
- Percussion drill hole
- Claim post
- Mineralization
- BO - Bornite; MO - Molybdenite
- MC - Malachite; CV - Covellite
- CP - Chalcopyrite
- Limit of pyrite; defined, assumed

- LATE CRETACEOUS OR TERTIARY**
- Lamprophyre or diabase
 - Andesite
 - Felsite
 - Porphyritic andesite
 - Feldspar hornblende biotite porphyry
 - a- Crowded monzonite porphyry b- breccia c- granite
 - a- Quartz monzonite porphyry b- breccia
- LATE CRETACEOUS**
- Aplitic quartz porphyry
 - Biotite hornblende granodiorite
- LOWER JURASSIC**
- HAZELTON GROUP**
- TELKWA FM. : crystal tuff, lapilli tuff, volcanic breccia

Part 2
of 3

MINERAL RESOURCES BRANCH
ASSESSMENT REPORT
8757
NO.

MINING CO. LTD.

GEOLOGY & DRILL SITES

PROJECT: WHITING CREEK
 N15 95-E-11,14 DISPOSITION: WHIT 1-6
 WORK BY: R.M. GANN SCALE: 1:5000
 DRAWN: K. GOSSEN DATE: 1990 MAP: 1/B





WHIT 3

WHIT 4

WHIT 5

WHIT 6

part 2
of 3

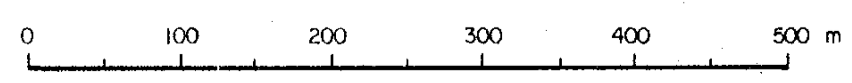
MINERAL RESOURCES BRANCH
ASSESSMENT REPORT
8757
NO.

NOTE:
60 + SAMPLE STATION
ppm Cu
PDH 20 ■ Percussion drill hole site

SMD MINING CO. LTD.

COPPER IN SOIL

PROJECT	WHITING CREEK
NITS	93-E-11, 14
DISPOSITION	WHIT 1-6
WORK BY	R. M. CANN
SCALE	1:5,000
DRAWN	C.D. OUBIN
DATE	NOV/80
MAP	2





WHIT 3

WHIT 4

WHIT 5

WHIT 6

Whiting Ck

68 DEL TIP C.P.

DEL 4N4W

LCP WHIT 5,6

BASE LINE

Part 2 of 3

MINERAL RESOURCES BRANCH
ASSESSMENT REPORT
8757
NO.

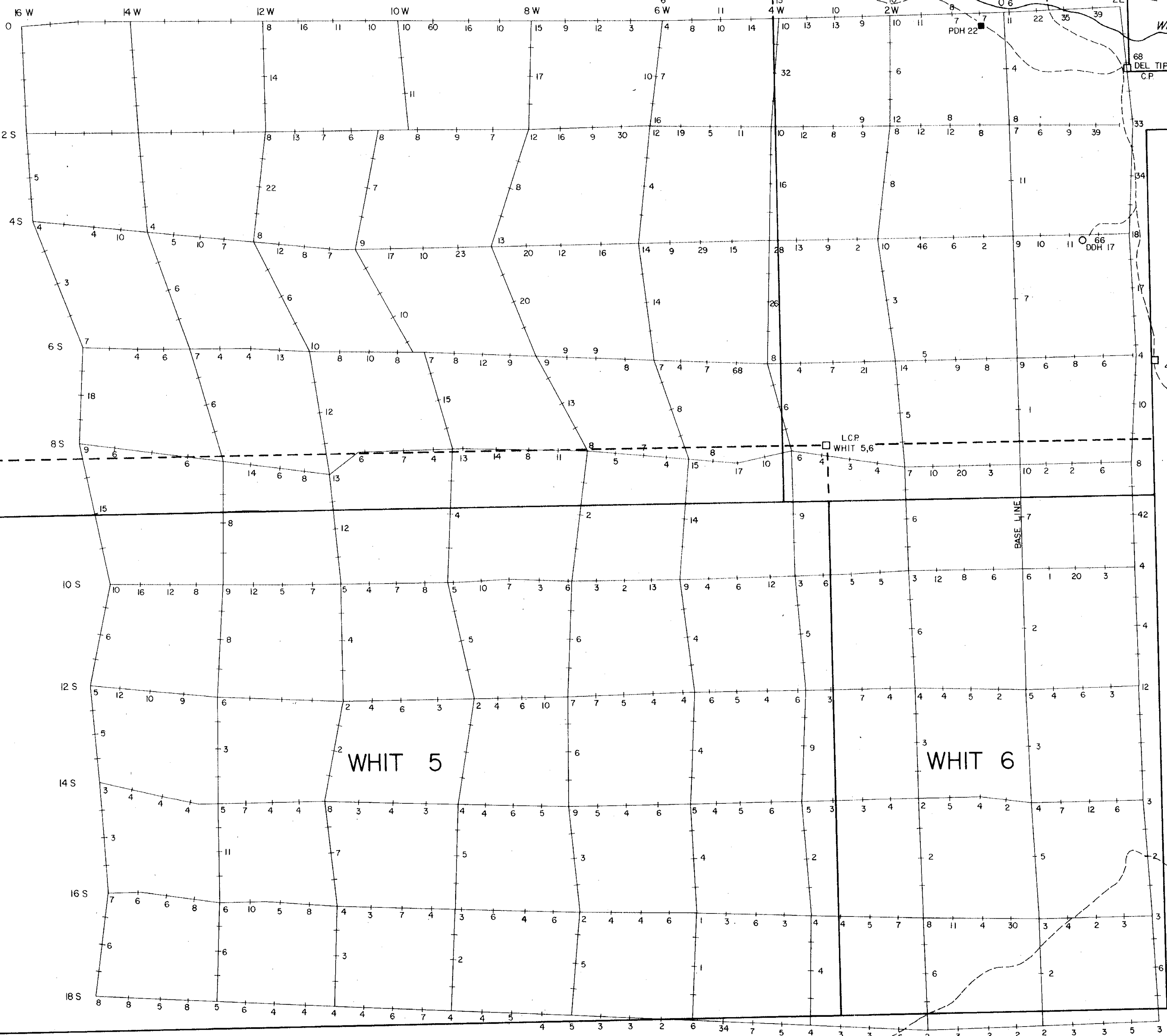
NOTE:
9 + SAMPLE STATION
ppm Mo
PDH 20 ■ Percussion drill hole site

SMD MINING CO. LTD.

MOLYBDENUM IN SOIL



PROJECT	WHITING CREEK	DISPOSITION	WHIT 1-6
NTS	93-E-11, 14	SCALE	1:5,000
WORK BY	R.M. CANN	DATE	NOV / 80
DRAWN	C.D. DURBIN	MAP	3





WHIT 3

WHIT 4

WHIT 5

WHIT 6

Whiting Ck.

DEL TIP
C.P.

DEL
4N4W

L.C.P.
WHIT 5,6

**Part 2
93**

MINERAL RESOURCES BRANCH
ASSESSMENT REPORT
8757
NO.

NOTE:
20 + SAMPLE STATION ppm Pb
PDH 20 ■ Percussion drill hole site

SMD MINING CO. LTD.

LEAD IN SOIL



PROJECT	WHITING CREEK		
NTS	93 - E - 11, 14	DISPOSITION	WHIT 1 - 6
WORK BY	R. M. CANN	SCALE	1 : 5,000
DRAWN	C. D. DURBIN	DATE	NOV/80
		MAP	4



WHIT 3

WHIT 4

Whiting Ck.

83 DEL TIP C.P.

DEL 4N4W

L.C.P. WHIT 5,6

BASE LINE

part 2
of 3

MINERAL RESOURCES BRANCH
ASSESSMENT REPORT
8757
NO.

NOTE:
100 + SAMPLE STATION ppm Zn
PDH 20 ■ Percussion drill hole site

WHIT 5,6 C.P.

SMD MINING CO. LTD.

ZINC IN SOIL



PROJECT	WHITING CREEK
NTS	93 - E - 11, 14
DISPOSITION	WHIT 1-6
WORK BY	R.M. CANN
SCALE	1:5,000
DRAWN	C.D. DURBIN
DATE	NOV / 80
MAP	5



WHIT 3

WHIT 4

WHIT 5

WHIT 6

Whiting Ck

part 2
of 3

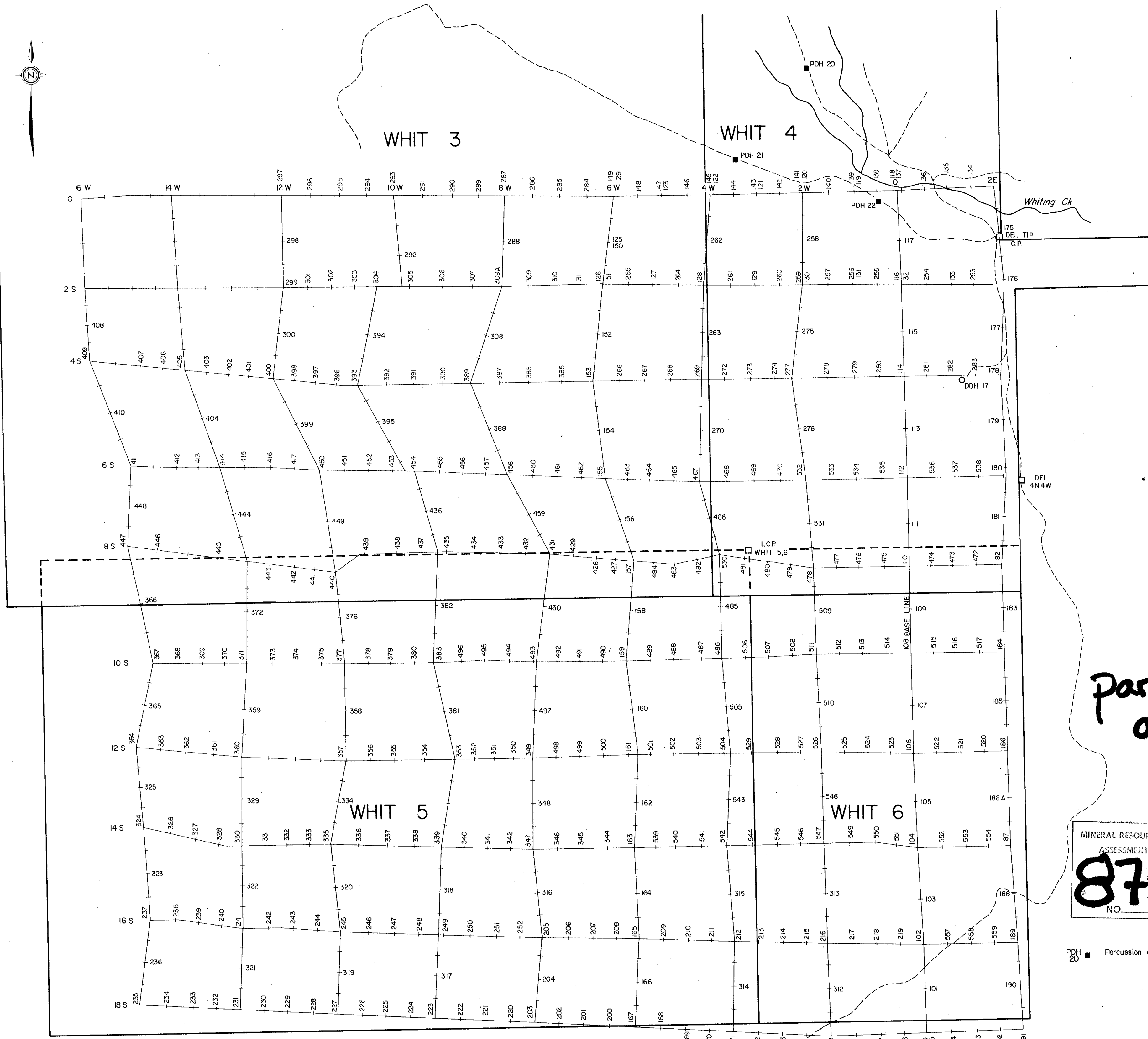
MINERAL RESOURCES BRANCH
ASSESSMENT REPORT
8757
NO.

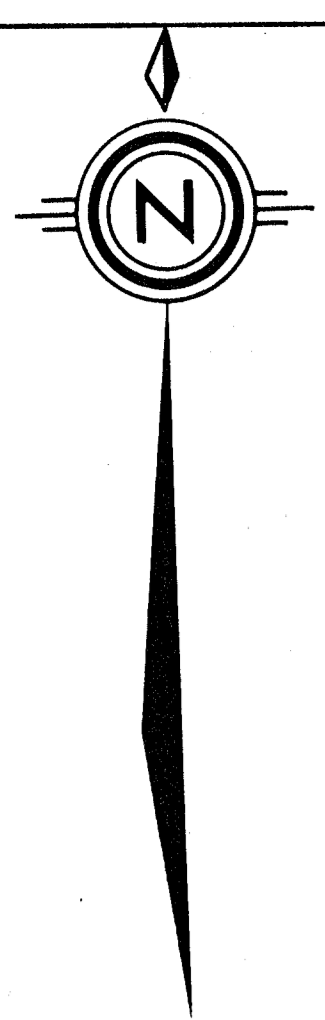
PDH 20 ■ Percussion drill hole site

SMD MINING CO. LTD.

SOIL GEOCHEMISTRY
SAMPLE NUMBERS

PROJECT	WHITING CREEK
NTS	93-E-11,14
WORK BY	R.M. CANN
DRAWN	C.D. DURBIN
DISPOSITION	WHIT 1-6
SCALE	1:5,000
DATE	
MAP	6



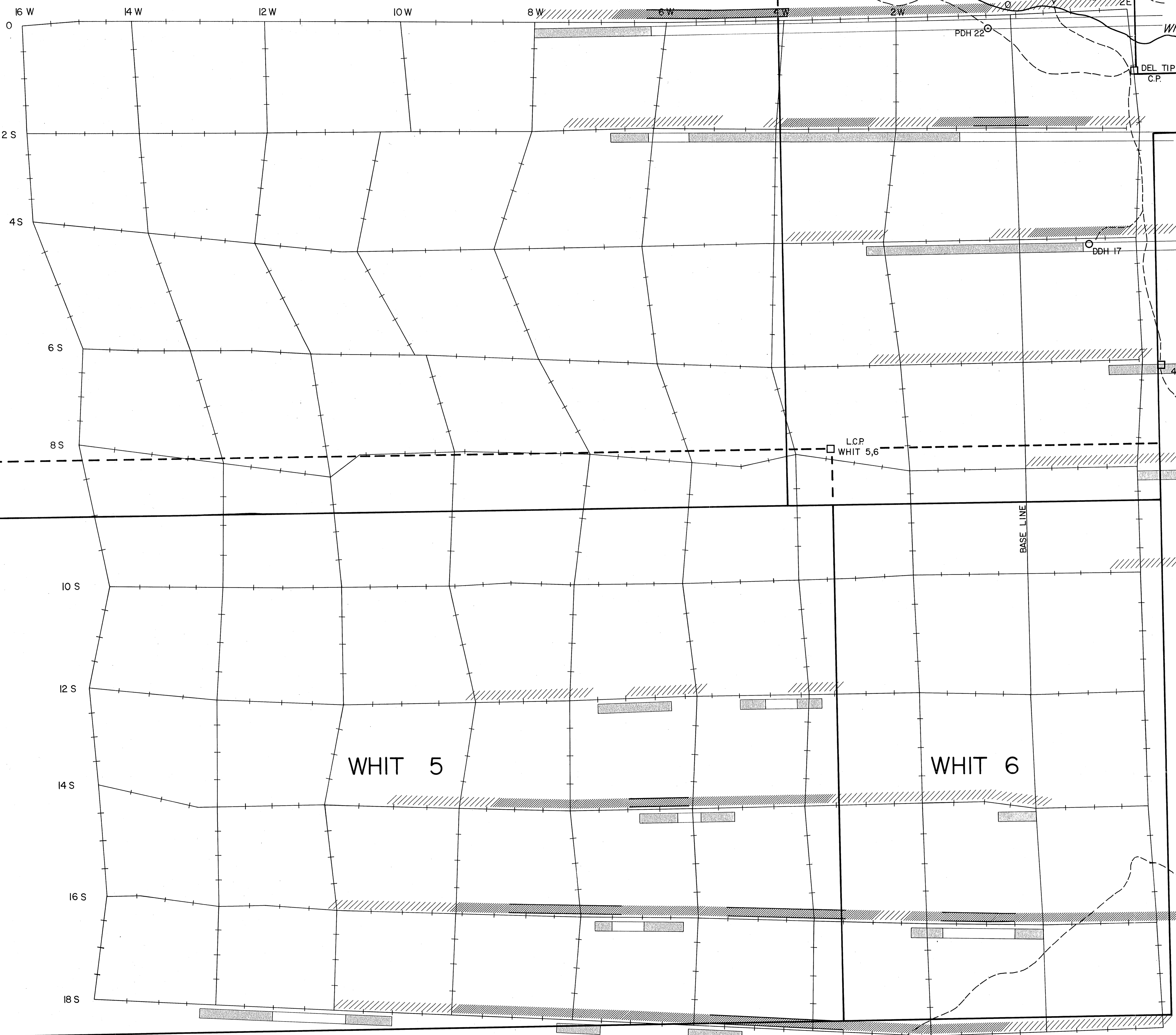


WHIT 3

WHIT 4

WHIT 5

WHIT 6

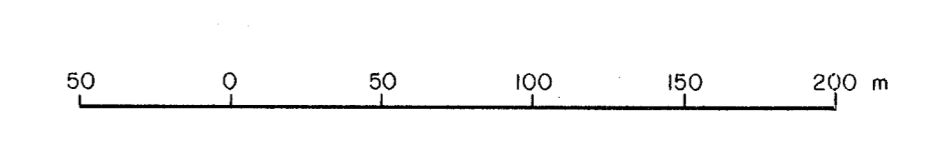


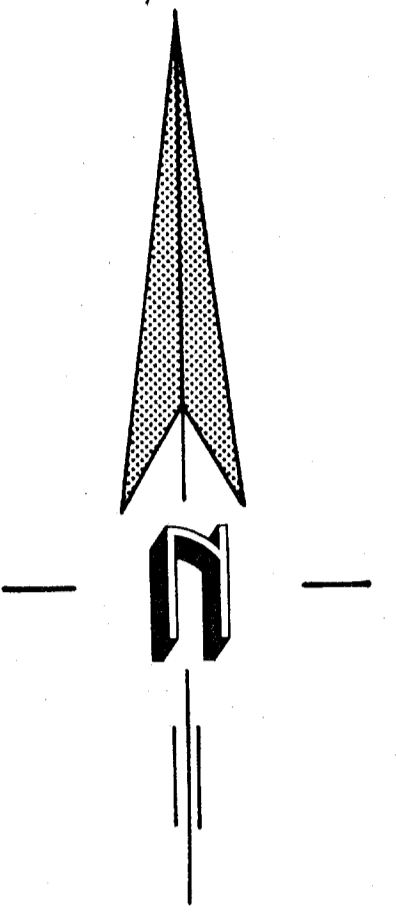
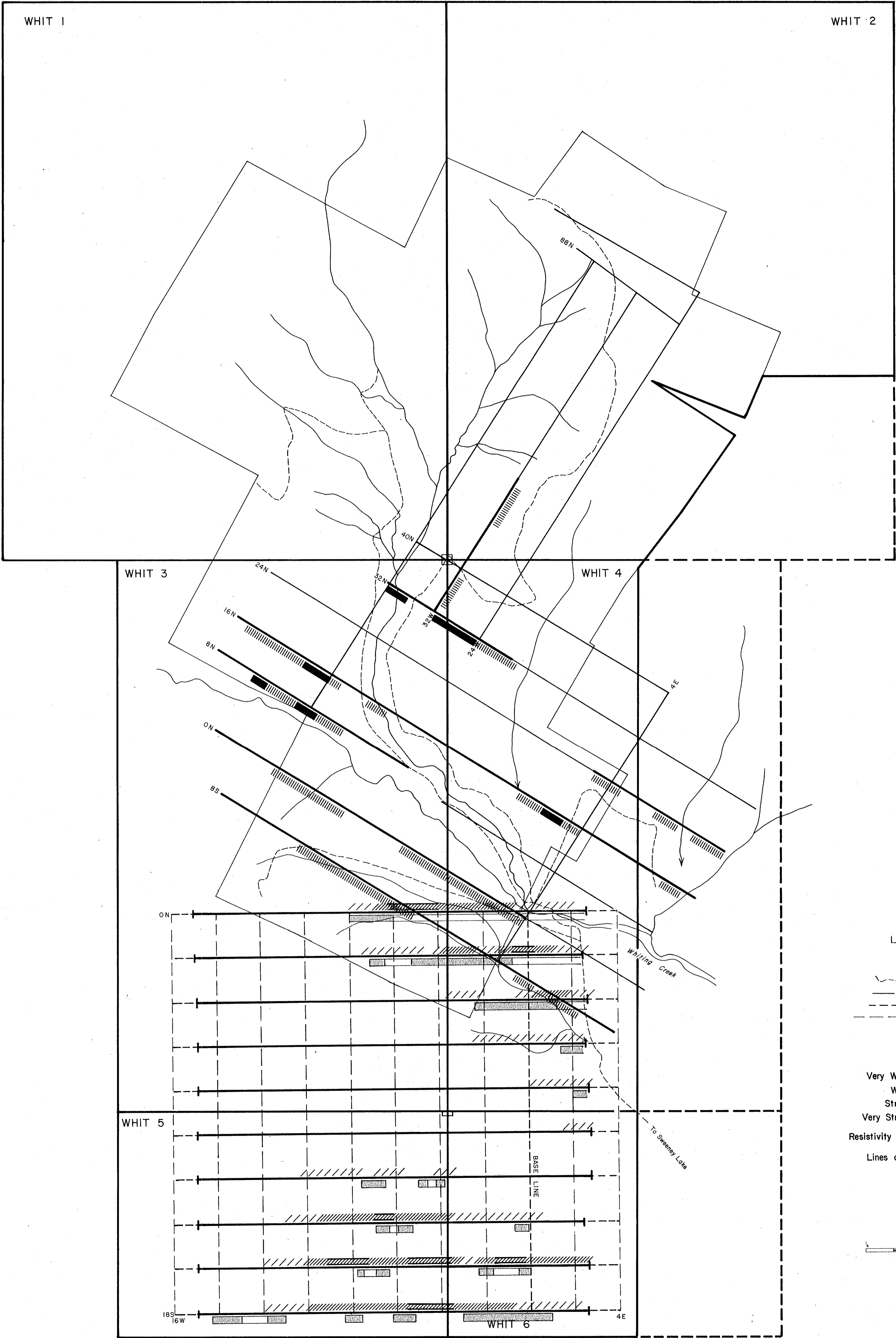
Part 2 of 3

MINERAL RESOURCES BRANCH
ASSESSMENT REPORT
NO. 8757

- LEGEND** IP ANOMALIES
- VERY WEAK
 - WEAK
 - STRONG
 - VERY STRONG
 - RESISTIVITY LOW

SMD MINING CO. LTD.	
IP / RESISTIVITY SURVEY COMPILATION I	
PROJECT WHITING CREEK	DISPOSITION WHIT 1-6
NTS 93-E-11, 14	SCALE 1:2500
WORK BY R. MATTHEWS	DATE NOV/80
DRAWN C.G. DURBIN	MAP 7





LEGEND

- ROAD
- EXISTING GRID LINES
- PROPOSED CUT LINES
- PROPOSED FLAGGED LINES

I.P. ANOMALIES

- Very Weak
 - Weak
 - Strong
 - Very Strong
 - Resistivity Low
- McPhar Equivalent
- Possible anomalous zone
 - Anomalous Zone

Lines covered by I.P. Survey



MINERAL RESOURCES BRANCH
ASSESSMENT REPORT
8757
NO.

Part 2 of 3

SMD MINING CO. LTD.

I.P./RESISTIVITY SURVEY
COMPILATION II

PROJECT WHITING CREEK, B.C.			
NTS	93-E-11,14	DISPOSITION	WHIT 1-6
WORK BY	R. MATTHEWS	SCALE	1:10,000
DRAWN	C.D. DURBIN	DATE	MAP 8



	L-18S	L-16S	L-14S	L-12S	L-10S	L-8S	L-6S	L-4S	L-2S	L-0
16W	57983 57985 57371 57543	57962 57814 57964 58222	NR 58424 58034 58091	NR NR NR NR	58461 58156 58689 58357	57609 58688 61790 NR	60347 NR NR 60732	NR 58894 NR 58704	60754 57814 NR 60403	59465 60769 60335 59411
15W	57580 57606 58319 58069	58222 58261 58100 58493	58429 58333 58486 58872	NR NR NR 57984	58948 60017 61248 60381	61548 60444 60353 59704	NR NR 60841 60708	58704 58437 59403 60081	60485 60638 NR NR	59969 59889 60744 58753
14W	57847 58120 58350	58784 58921 58365	58297 57048 57187	57651 60087 NR	59495 59437 59977	59704 58607 59977	58166 57822 57641	60844 NR 59485	NR 59198 60019	58249 58733 59775
13W	58401 58518	59337 57032 57645	59616 57873 61644	NR 59858 NR	59739 59767 59167	59739 59503 58499	57822 58443 59665	59476 60267 NR	57641 60257 NR	59775 59698 60000
12W	58623 58816 59203	59358 60306 60325	57691 58606 58270	58192 51831 51584	57476 58439 56849	57439 57876 57687	60266 59766 59970	60266 59411 60794	60019 60054 58598	58542 58389 57705
11W	61030 58460 58251	59559 NR 57906	58643 NR NR	59168 NR 60645	56725 57724 57605	57687 58276 58840	57876 57898 59300	59806 58798 58843	57377 58019 57671	57705 57852 57855
10W	NR NR 60270	58009 58335 59780	61469 NR 60138	58004 57771 57170	57127 59418 59317	58621 59209 59418	59376 57759 57665	57911 58505 57915	58254 58978 57602	56900 56900 57094
9W	60061 59780 60539	58335 58355 58580	58089 56835 57809	56732 58238 58831	59317 58562 59418	59376 57759 57665	59376 57759 57602	58254 58978 57602	57524 58978 57332	57429 57388 57455
8W	61027 59806 59217	58118 58808 59069	58104 57934 59455	59471 59429 57811	59471 59429 59281	57665 57069 57593	57665 57343 57561	58941 58856 57804	57332 57645 57780	57455 57309 57300
7W	58433 57650 60520	59191 58306 58586	59814 57131 59698	57281 60472 60202	59113 59000 58460	57444 57625 57826	57305 57536 57804	57804 57808 57804	57780 57681 57457	57300 57444 57455
6W	60588 60402 60106	58953 58559 57472	58159 58172 58070	58405 59471 58474	57118 57165 57379	57118 57165 57379	57118 57165 57379	57118 57165 57379	57118 57165 57379	57309 57306 57200
5W	60298 60198 58507	57346 57048 56967	59316 59459 60268	59386 59459 59815	57763 58036 59815	57763 58036 59815	57763 58036 59815	57763 58036 59815	57763 58036 59815	56925 56984 56937
4W	58071 57598 59036	57067 57158 57582	58664 58429 58361	NR NR 59273	57321 57111 57332	57321 57111 57332	57321 57111 57332	57446 57521 57521	57529 57473 57548	56944 56993 57201
3W	60521 59868 60164	60521 59868 60164	58575 58575 60151	58713 58713 58776	58116 58786 57746	58116 58786 57746	57785 57198 57665	57549 57909 57422	57385 57309 57196	57219 57117 57254
2W	60478 60424 NR	57159 58863 58110	58776 58716 60190	59145 58525 59365	57746 58776 58302	57746 58776 58302	57746 58776 58302	57424 57625 57528	57374 57257 57460	57254 57285 57016
1W	59374 60033	57991 57615 58567	58170 58648 59359	59103 58895 58195	57942 57708 57536	57942 57708 57536	57750 57298 57005	57297 57442 57173	57297 57442 57043	57362 57250 57190
BL	60035 58817 58863	58974 58523 58871	58057 57544 57521	58041 58956 58127	57548 57731 57550	57548 57731 57550	57606 57565 57379	57665 57174 57241	57665 56783 56861	56976 56846 56790
1E	59188 59292 59380	59446 57651 59730	57131 56780 56402	59239 58276 57614	57546 57518 57835	57546 57518 57835	57550 57536 57317	57241 57218 56943	56861 56943 56826	56790 56785 56892
2E	59917 60051 60027	60527 59402 59438	56800 57460 58216	58138 60043 57760	57573 57621 57262	57439 57458 57667	57501 57458 57565	57178 57486 57115	56826 56905 56964	56892 56826 57164
3E	59331 59570 59170	60288 60376 59754	59157 59284 59245	58610 58575 57673	57133 57599 57088	58498 57599 57817	57406 57245 56914	56947 57143 57090	56964 56935 56968	57164 57090 56980
4E	60239 60614	59917 59917	59109 58777	57181 57934	57088 57934	57817 57934	57016 57155	57143 57090	56964 56968	57090 56980

Part 2
of 3

MINERAL RESOURCES BRANCH
ASSESSMENT REPORT
8757
NO.

SMD MINING CO. LTD.
WHITING CREEK PROPERTY, OMINICA M.D., B.C.
MAGNETOMETER SURVEY I
CONTOURS OF TOTAL FIELD INTENSITY
(gammas)
SCALE 1:5000
50m 0 100 200m
PETER E. WALCOTT & ASSOC. LTD.
JUNE - JULY 1980
MAP 9



L-16W

L-14W

L-12W

L-10W

L-8W

L-6W

L-4W

L-2W

L-0

L-2E

1S

2S

3S

4S

5S

6S

7S

8S

9S

10S

11S

12S

13S

14S

15S

16S

17S

18S

60011
59823
65082
62721
NR
62761
61710
60275
60815
60457
60148
60519
59805
58622
58504
60620
62100 INT
NR
60861
60746
60735
61318
61036
60254 INT
60425
59496
59397
59004
59168
59057
59618 (12) INT
59945
NR
58820
NR
58869
58435
58434
58437
58157
58167
58114
58194
NR
57972
57941
58081
58606
NR
58490
58446
58442
58201
58017
58167
57906
57879
57769
57787
57983
57891

58777
60101
60314
58955
NR
61250
62676
NR
61731
61309
61624
61383
61074
60473
60610
60363
59624 INT
59703
58507
57124
59792
58468
58472
60155 INT
60132
60731
59244
59777
59771
58604
60580
60347 (44) INT
61416
61336
62001
60139
59933
NR
60192
58874
59532
59881
60029
60104
60371
59840
59242
59446
59488
59490
58985
58855
58804
58535
58328
58123
60424
58055
58388
58447
58308
58121
58145
57848
57750
57847

57459
57389
57457
57715
57722
57950
58131
58271
57896
57850
57756
57122
57190
58267
57414
57403
57715
57518
57737
57470
57391
57459
57577
57094
58080
58310
58727
60192
59805
58820
60374
60698
57728
60258
59549
58036
57805
58793
59429
59375
59289
59169
58418
57716
58908
59470
60479
NR
60424
60283
59431
59343
59174
58055
58388
58447
58308
58121
58145
57848
57750
58547

57459
57389
57457
57715
57722
57950
58131
58271
57896
57850
57756
57122
57190
58267
57414
57403
57715
57518
57737
57470
57391
57459
57577
57094
58080
58310
58727
60192
59805
58820
60374
60698
57728
60258
59549
58036
57805
58793
59429
59375
59289
59169
58418
57716
58908
59470
60479
NR
60424
60283
59431
59343
59174
58055
58388
58447
58308
58121
58145
57848
57750
58547

57271
57444
57439
57389
57457
57715
57722
57950
58131
58271
57896
57850
57756
57122
57190
58267
57414
57403
57715
57518
57737
57470
57391
57459
57577
57094
58080
58310
58727
60192
59805
58820
60374
60698
57728
60258
59549
58036
57805
58793
59429
59375
59289
59169
58418
57716
58908
59470
60479
NR
60424
60283
59431
59343
59174
58055
58388
58447
58308
58121
58145
57848
57750
58547

57124
57217
57347
57406
57575
57521
57415
57509
57237
57640
57705
57846
58012
57190
58213
47410
57414
57462
57613
57424
58013
57670
57656
58223
57423
57462
57488
57615
57670
57840
57876
57876
58223
57715
57213
57201
57269
57489
57502
57241
57150
57153
57381
57145
57915
60799
60081
57971
58702
59570
60681
60621
59522
59379
59034
58392
58496
58405
59407
57868
57973
57805
57804
57211
57778
57778
56929
56865
56894
57920
58230
58531
58898
60279

57105
57133
57023
57190
57373
57481
57668
57600
57623
57472
57510
57412
57488
57615
57670
57840
57876
57876
58223
57727
57967
57997
58096
58586
58215
57825
57571
57679
57381
57145
58118
58016
57971
58702
59570
60681
60621
59522
59379
59034
58392
58496
58405
59407
57868
57973
57805
57804
57211
57778
57778
56929
56865
56894
57920
58230
58531
58898
59034

57062
57243
57230
57399
57294
57314
57080
57231
57228
57298
57534
57707
57152
57667
57515
57359
57102
57277
57670
57660
57897
57845
57528
57565
57588
57865
57786
57706
58043
58098
58314
58713
58834
58728
59239
58073
58580
58222
58496
58099
58226
58277
58368
57003
58786
58496
58405
59407
57868
57973
57805
57804
57211
57778
57778
56929
56865
56894
57920
58230
58531
58898
59034

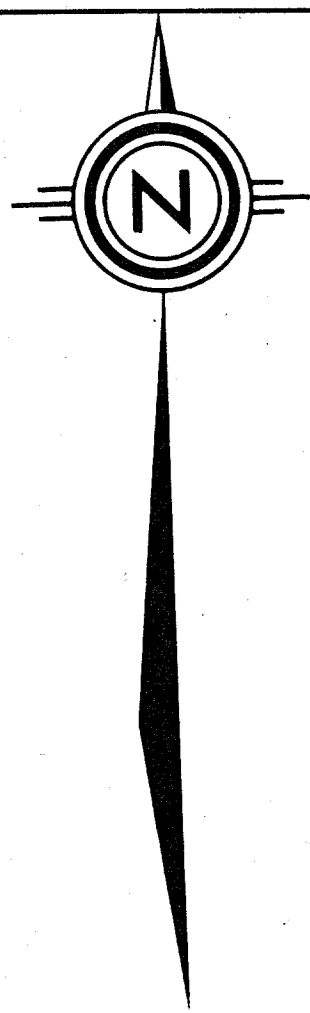
56965
57015
57111
56928
56726
56840
57021
57176
57370
57263
57291
57574
57507
57356
57177
57868
57707
57384
57322
57246
57006
57232
57355
57364
57602
58006
58113
57144
57577
57633
57809
58094
58633
58360
58752
58393
58206
58093
58053
58900
57318
57892
58051
58079
59386
60132
58525
57987
57997
58592
59718
58162
58110
58466
58461
58971
58368
58600
59118
59066
59748
59680
60024

56899
56927
58373
58512
58567
58770
56895
56743
57023
56989
57041
57197
57215
57272
57405
57507
57533
57357
57320
57731
57401
57406
57298
57286
57356
57355
57641
57333
57791
58005
58008
58102
58248
58215
57826
57645
57515
56793
58577
58831
58913
59213
59738
60513
60525
60416
60025
59626
58020
58229
58914
60034
59892

part 2
of 3

MINERAL RESOURCES BRANCH
ASSESSMENT REPORT
8757
NO.

SMD MINING CO. LTD.
WHITING CREEK PROPERTY, OMINICA M.D., B.C.
MAGNETOMETER SURVEY II
CONTOURS OF TOTAL FIELD INTENSITY
(gammas)
SCALE 1:5000
50m 0 100 200m
PETER E. WALCOTT & ASSOC. LTD.
JUNE - JULY 1980
MAP 10



WHIT 3

WHIT 4

WHIT 5

WHIT 6

WHIT 5,6
C.P.

TOTAL FIELD CONTOUR INTERVAL = 500 GEOMETRIC



part 2
of 3

MINERAL RESOURCES BRANCH
ASSESSMENT REPORT
8757
NO.

SMD MINING CO. LTD.

MAGNETIC SURVEY
CONTOUR MAP

PROJECT	WHITING CREEK	DISPOSITION	WHIT 1-6
DATE	1978	SCALE	1:2500
DRAWN	C.D. GURIN	DATE	
		MAP	11



Part 2
of 3

MINERAL RESOURCES BRANCH
ASSESSMENT REPORT
8757
NO.

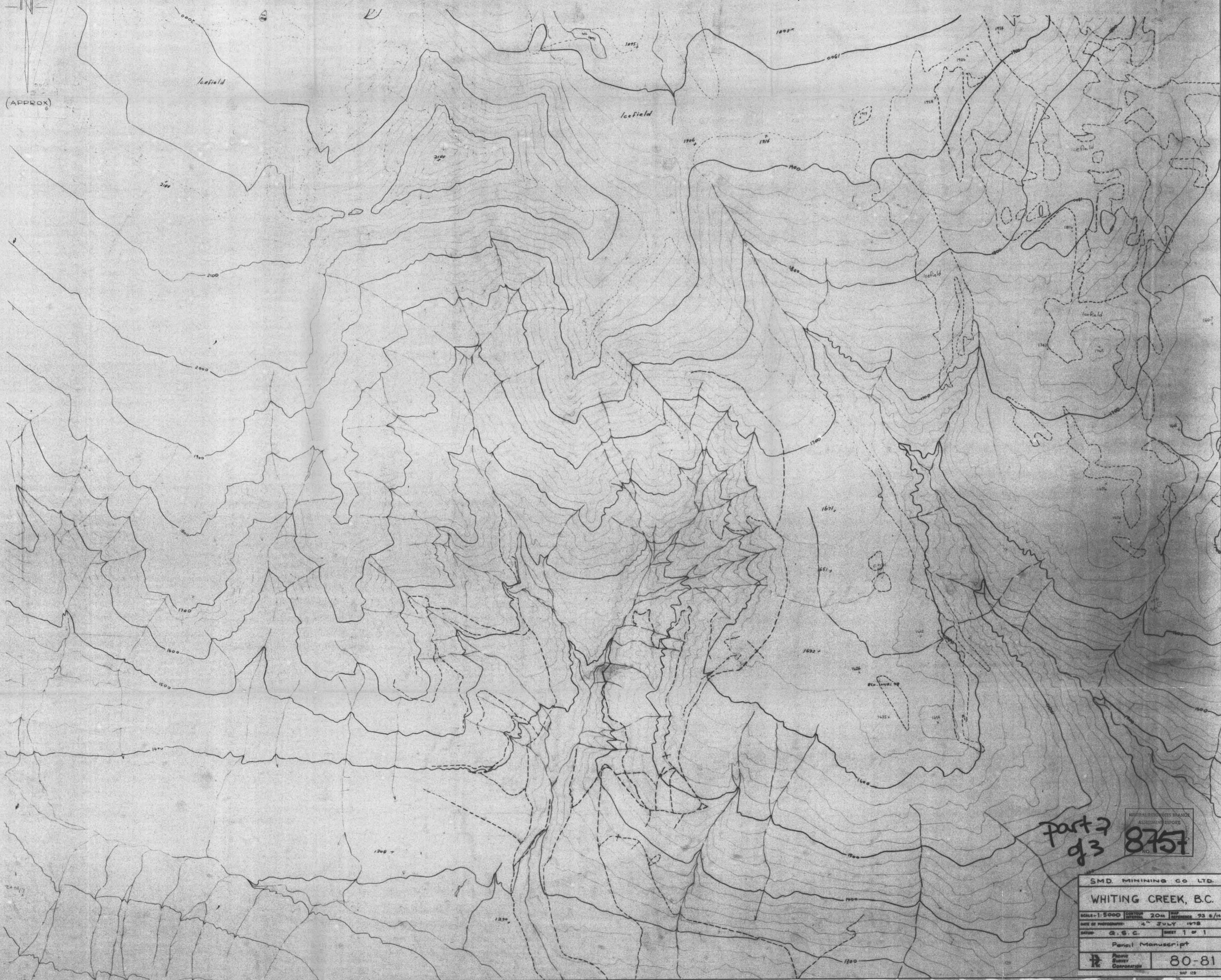
SMD MINING CO. LTD.
WHITING CREEK, B.C.
SCALE: 1:5000 CONTOUR INTERVAL: 20m MAP REFERENCE: 93 E/14
DATE OF PHOTOGRAPHY: 4th JULY 1978
DATE: G.S.C. SHEET 1 OF 1
Pencil Manuscript
80-81
MAP 12A



(APPROX)



(APPROX)



Part 3
93

MINERAL RESOURCES BRANCH
ASSESSMENT REPORT
NO. 8757

SMD MINING CO. LTD.		
WHITING CREEK, B.C.		
SCALE: 1:5000	COUNTY: 20M	MAP REFERENCE: 93 8/10
DATE OF PHOTOGRAPHY: 4 JULY 1978		
DRAWN: G. S. C.	SHEET 1 OF 1	
Panel Manuscript		
	Province of British Columbia	80-81