

MODBAR

GEOCHEMISTRY

MODBAR, MB #1, MB #2

MINERAL CLAIMS

NEW WESTMINSTER M.D.

WORK DONE OCTOBER 1979

NTS. 92H/14W

LONG. 121° 18W

LAT. 49° 48'N

OPERATOR: JMT SERVICES CORP

UTAH MINES LTD

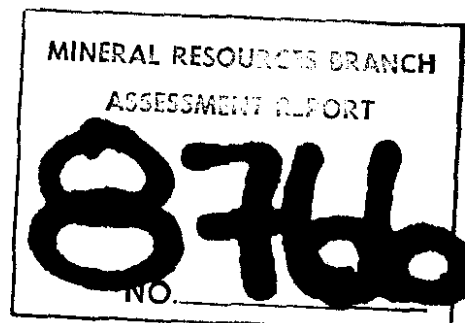


TABLE OF CONTENTS

	page
INTRODUCTION	1
CLAIMS	1
GEOLOGY	1
GEOCHEMISTRY	1
SURVEYS	
METHOD	
COPPER	
MOLYBDENUM	
CONCLUSIONS AND RECOMMENDATIONS	4
STATEMENT OF COSTS	5
STATEMENT OF QUALIFICATIONS	6
LIST OF FIGURES	
PROPERTY LOCATION	2
CLAIM MAP	3
COPPER GEOCHEMISTRY	(in pocket)
MOLYBDENUM GEOCHEMISTRY	(in pocket)

INTRODUCTION

The Modbar prospect is a Cu-Mo porphyry located about 21 Km Southeast of Boston Bar B.C. South of Uztilius Creek at elevation 2500-3500 feet. It is accessible normally by two-wheel drive vehicle on logging roads which connect to Boston Bar. Part of the property is under active logging.

CLAIMS

The property comprises 3 claims with a total of 26 units.

MODBAR	541 (8)	10 units
MB # 1	542 (8)	10 units
MB # 2	543 (8)	6 units

GEOLOGY

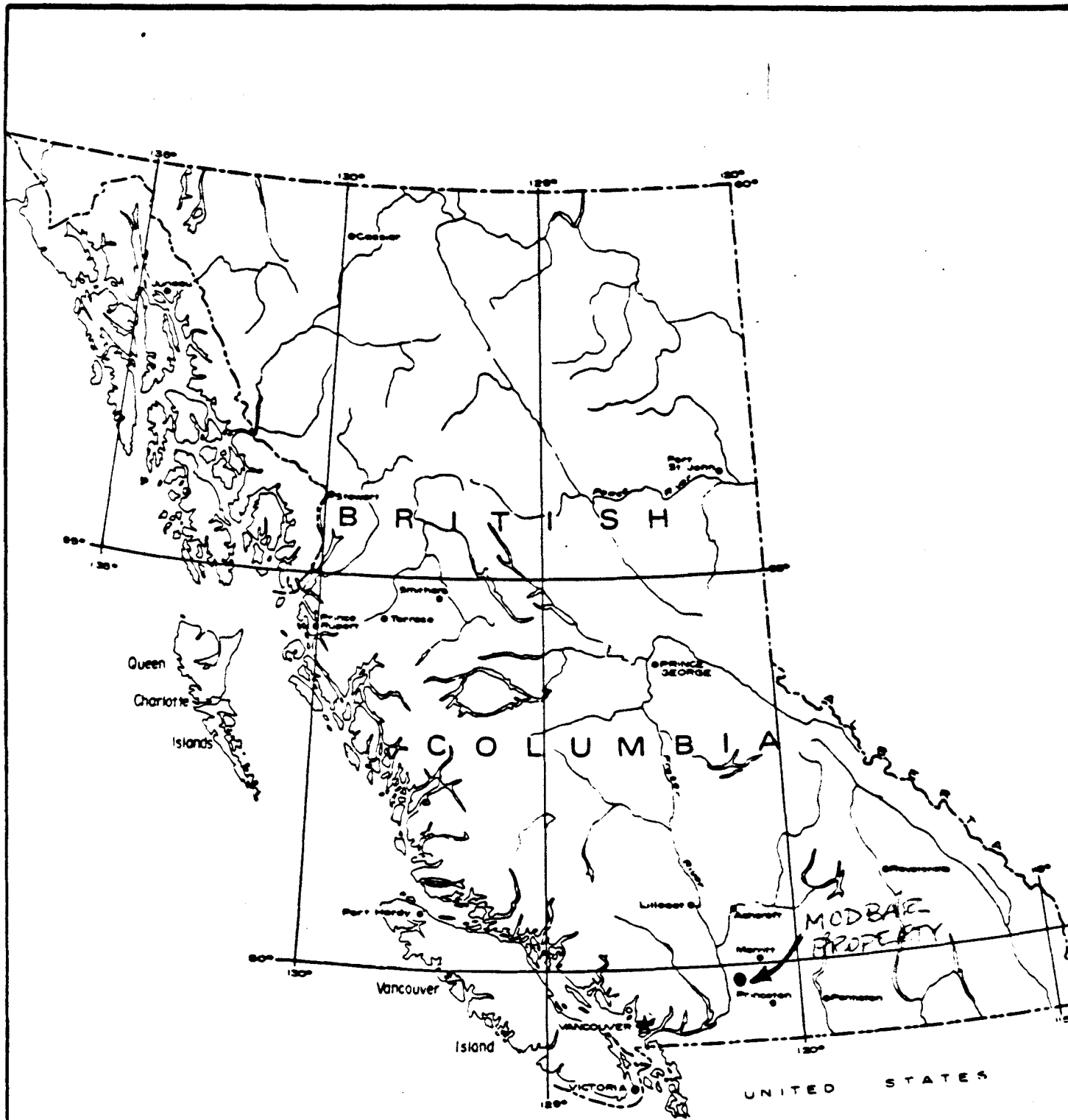
The prospect is located west of the west boundary of the Eagle batholith. Intrusive rocks on the property are varied. No formal geological map has been made. Molybdenite has been found in quartz-porphyry with stockwork quartz veins. Young breccias with fragments of rhyolite and hornfels sediments and tuffs intrude phyrific hornfels adjacent to a weakly mineralized granodiorite stock. The age relations of the intrusive and sequence of mineralizing events is not known at this time.

GEOCHEMISTRY

Reconnaissance geochem soil and rock chip samples were taken over the property. The soil samples were assayed for Cu and Mo. One rock chip was taken in hornfels.

SURVEYS:

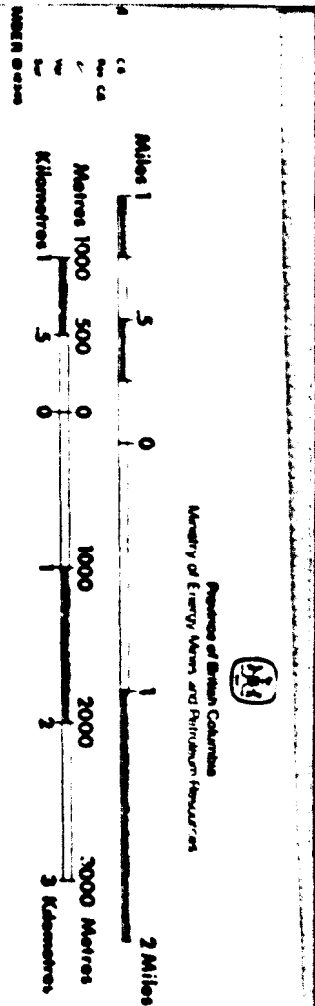
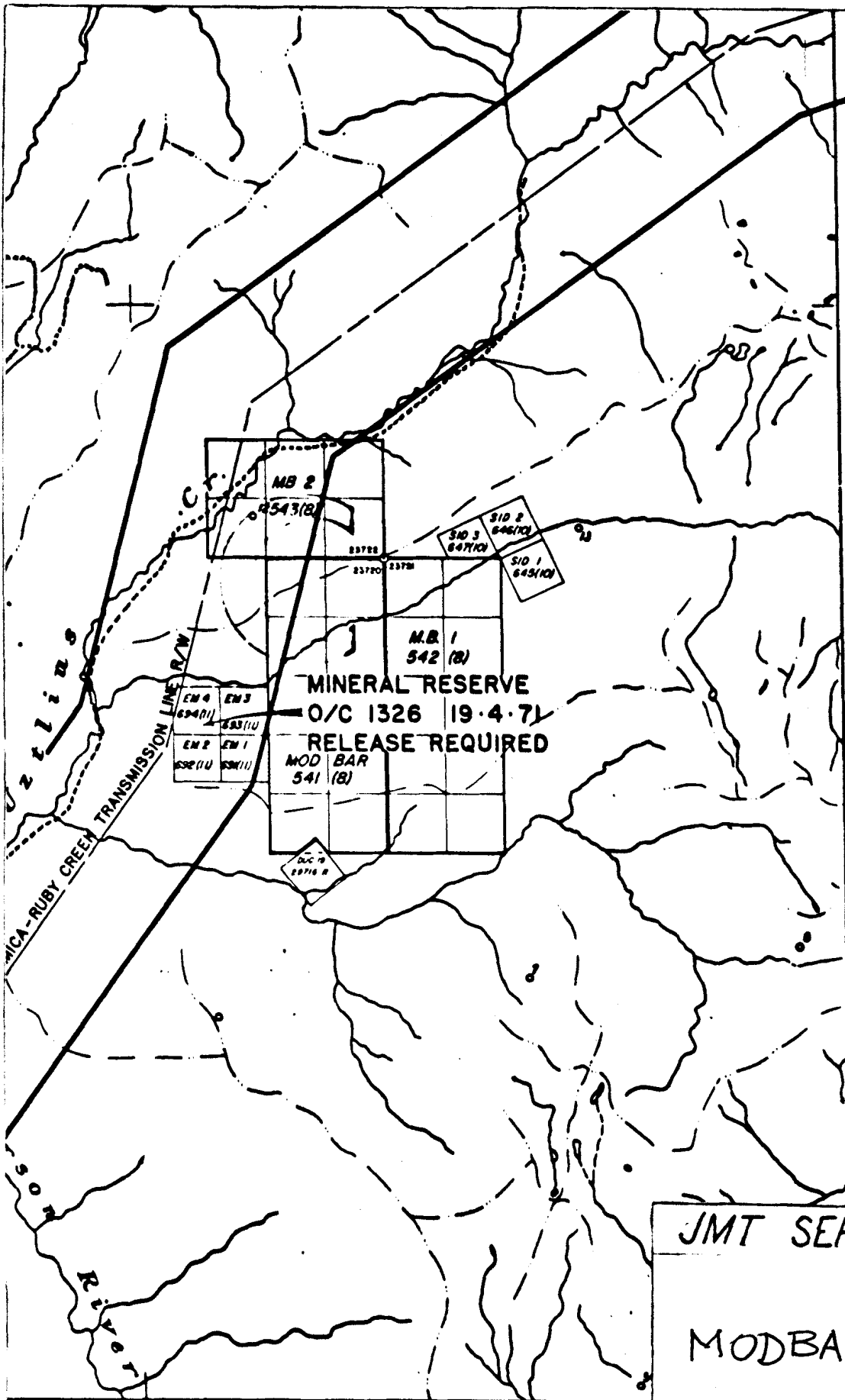
Soil samples were taken from the reddish brown B horizon where developed. Orientation sample lines were run in areas of known mineralization. A complete survey was not attempted.



J M T SERVICES CORP.

PROPERTY LOCATION MAP

<p>SCALE</p> <p>0 136 Miles</p>		<p>NTS MAP AREA</p> <p>93 - E</p>	<p>DRAWING No.</p>
<p>Prepared by:</p> <p>Drawn by:</p>	<p>Date:</p> <p>Revised:</p>		



UNLESS VERIFIED OR SURVEYED, THE MAP POSITION
 LEGAL CORNER POST IS BASED ON THE LOCATOR'S SKETCH.
 OTHER INFORMATION, APPLY TO THE OFFICE OF THE MINING
 CONCERNED
 DATE OF MICROFILM: 80-11-20

JMT SERVICES CORP.

MODBAR PROSPECT

REFERENCE MAP 92H/14W
 LAND AND PETROLEUM RESOURCES, VICTORIA B.C.

Date Scale NTS

METHOD:

The soil samples were dried and sieved to - 80 mesh. A portion of the pulp was digested in a nitric-perchloric acid solution and the Cu and Mo was determined by A.A.

COPPER:

Most of the soils taken in the north part of the prospect area are anomalous for copper (greater than 250 ppm) with values up to 2900 ppm. However in the southern area the copper values are more variable with only a few anomalous values. Recent bulldozer excavations in this area by logging activities indicate a mantle of till at least tens of feet are present. Thus the soils here may not be reflecting bedrock.

MOLYBDENUM:

Molybdenum is moderately anomalous in the north area with values up to 41 ppm. No anomalous values were present in those samples taken in the south area.

CONCLUSION AND RECOMMENDATIONS

This soil survey has indicated the presence of anomalous amounts of copper and molybdenum in a porphyry environment. A more comprehensive geochemical survey and geological mapping and rock geochemical study is recommended.

STATEMENT OF COSTS.

J.S.Christie, Geologist 2 days	\$ 350.00
K.W.Livingstone, Geologist 3 days	525.00
C.J. Westerman, Geologist 2 days	350.00
Meals	110.00
Motels	75.00
Truck rental 4 days @ \$30.00 plus mileage 750 miles @ 10¢	195.00
Report and map preparation	350.00
Misc. typing, drafting, copying	125.00
Assays	92.66
	<hr/>
TOTAL	\$2172.66

STATEMENT OF QUALIFICATIONS

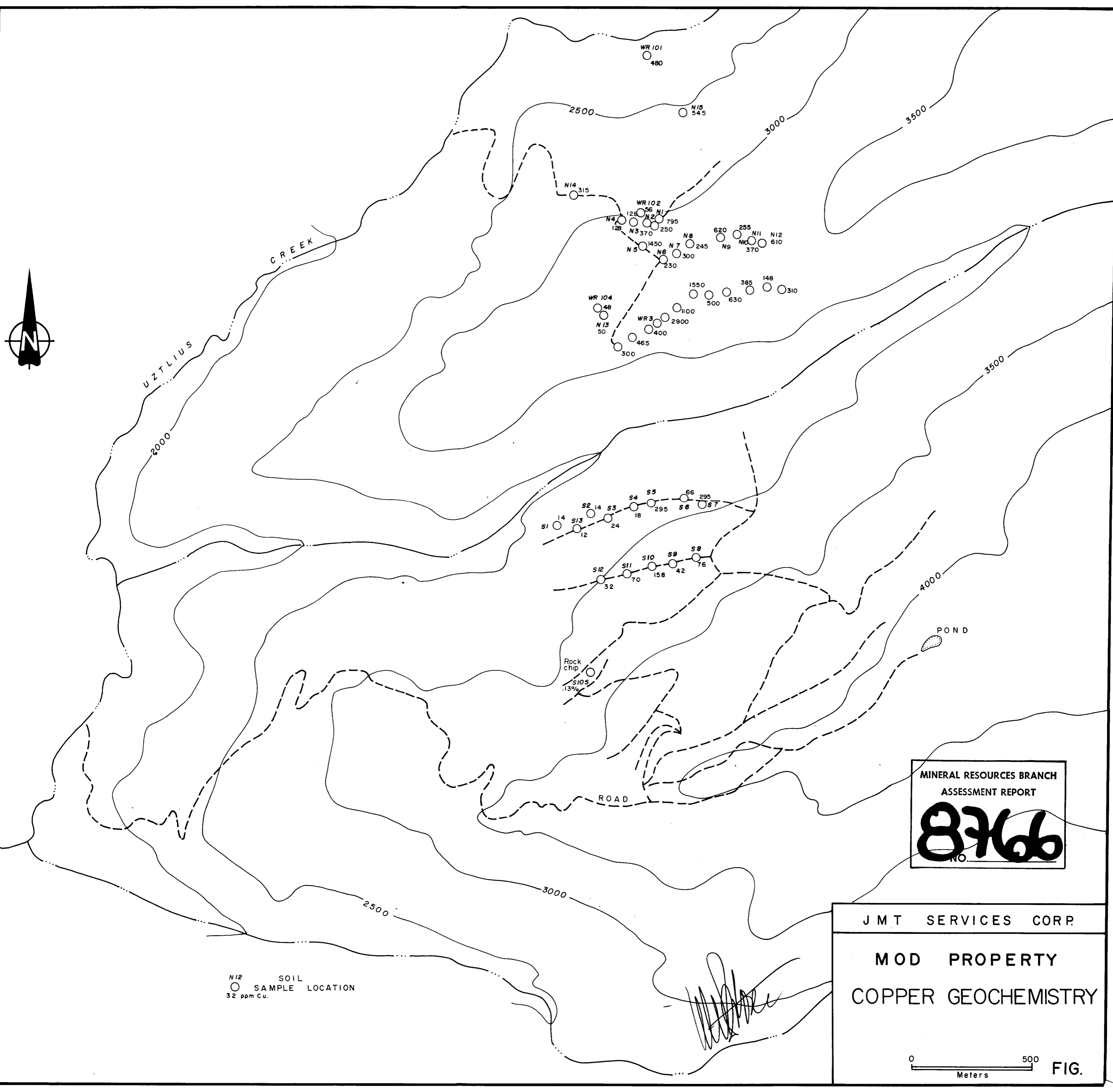
I, K.WAYNE LIVINGSTONE, residing at 4317 WEST BLVD.
Vancouver, British Columbia have the following degrees
in geology.

- 1) B.Sc. Hons. Geology, Carleton University, Ottawa 1966
- 2) M.Sc. Geology, University of British Columbia, Vancouver 1968.

I have practised my profession in economic geology
continuously since 1966.

A handwritten signature in cursive script, appearing to read 'K. Wayne Livingstone', written in dark ink.

K.Wayne Livingstone



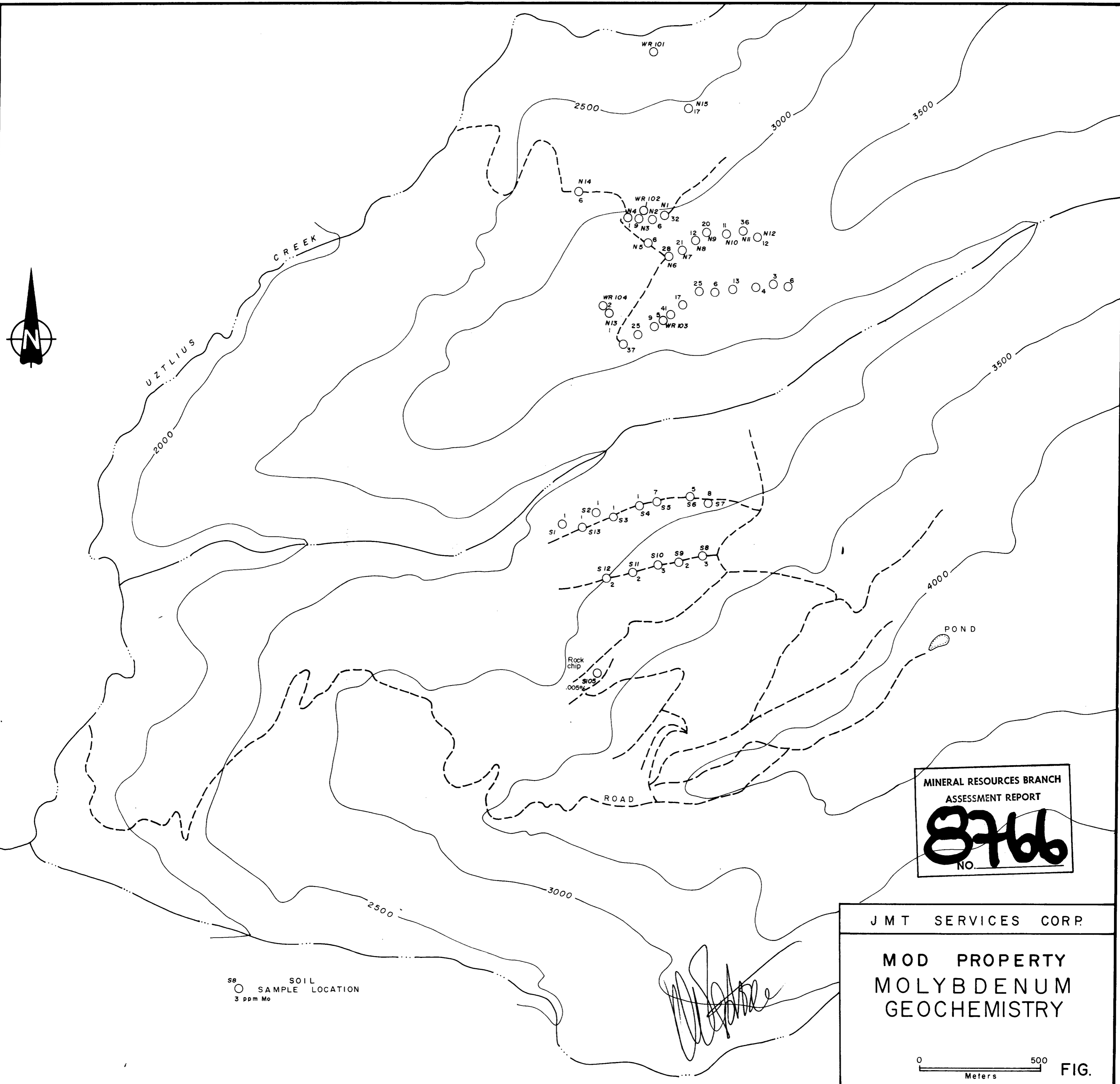
N12 SOIL
○ SAMPLE LOCATION
32 ppm Cu.

MINERAL RESOURCES BRANCH
ASSESSMENT REPORT
8766
NO.

JMT SERVICES CORP.
MOD PROPERTY
COPPER GEOCHEMISTRY



FIG.



S8
○ SOIL SAMPLE LOCATION
3 ppm Mo

MINERAL RESOURCES BRANCH
ASSESSMENT REPORT
8766
NO.

JMT SERVICES CORP.
**MOD PROPERTY
MOLYBDENUM
GEOCHEMISTRY**



FIG.