

RECEIVED AND RECORDED
Mrs G.C.
JAN-7 1981
GOLD COMMISSIONER,
SMITHERS, B.C.
M.R. No.

NORANDA EXPLORATION COMPANY, LIMITED

(NO PERSONAL LIABILITY)

DIAMOND DRILL REPORT

SADDLE HILL CLAIMS (WOLF 1 - 3)

55°13'N 126°22'W

OMINECA MINING DIVISION

93M/1W

MINERAL RESOURCES BRANCH
ASSESSMENT REPORT
8779
NO. _____

TABLE OF CONTENTS

	Page
1. SUMMARY AND CONCLUSIONS	1
2. INTRODUCTION	1
3. LOCATION AND ACCESS	1
4. CLAIM DATA	2
5. DIAMOND DRILLING	2
6. RECOMMENDATIONS	3

LIST OF FIGURES

	Page
FIGURE 1 LOCATION MAP	follows page 1
FIGURE 2 DETAILED LOCATION MAP	follows page 1

APPENDICES

- APPENDIX I STATEMENT OF COSTS
- APPENDIX II DRILL LOG SD-80-1
- APPENDIX III DRILL HOLE LOCATION
- APPENDIX IV STATEMENT OF QUALIFICATIONS

1. SUMMARY AND CONCLUSIONS

One angled diamond drill hole was cored to a depth of 152.4 meters on the Wolf 2 Claim in August, 1980. The drill hole was designed to test anomalous magnetics and IP targets characteristic of the Babine type porphyry mineralization. This area is covered with thick overburden so geology was projected into the area; geochemically there were no direct targets.

Some good grade copper mineralization was intersected over a short interval in the hole. This mineralization could be quite significant if it is related to the edge of a porphyry system.

2. INTRODUCTION

This report describes the results of a diamond drill hole drilled between August 5 and August 24, 1980. The hole was a culmination to soil, magnetic and IP surveys completed between October 1979 and June 1980.

3. LOCATION AND ACCESS

The claim group is located on the west side of Morrison Lake, 70 km northeast of Smithers. The center of the property is located at the south end of a small bay.

Access is by float plane or helicopter from Smithers.

LOCATION MAP

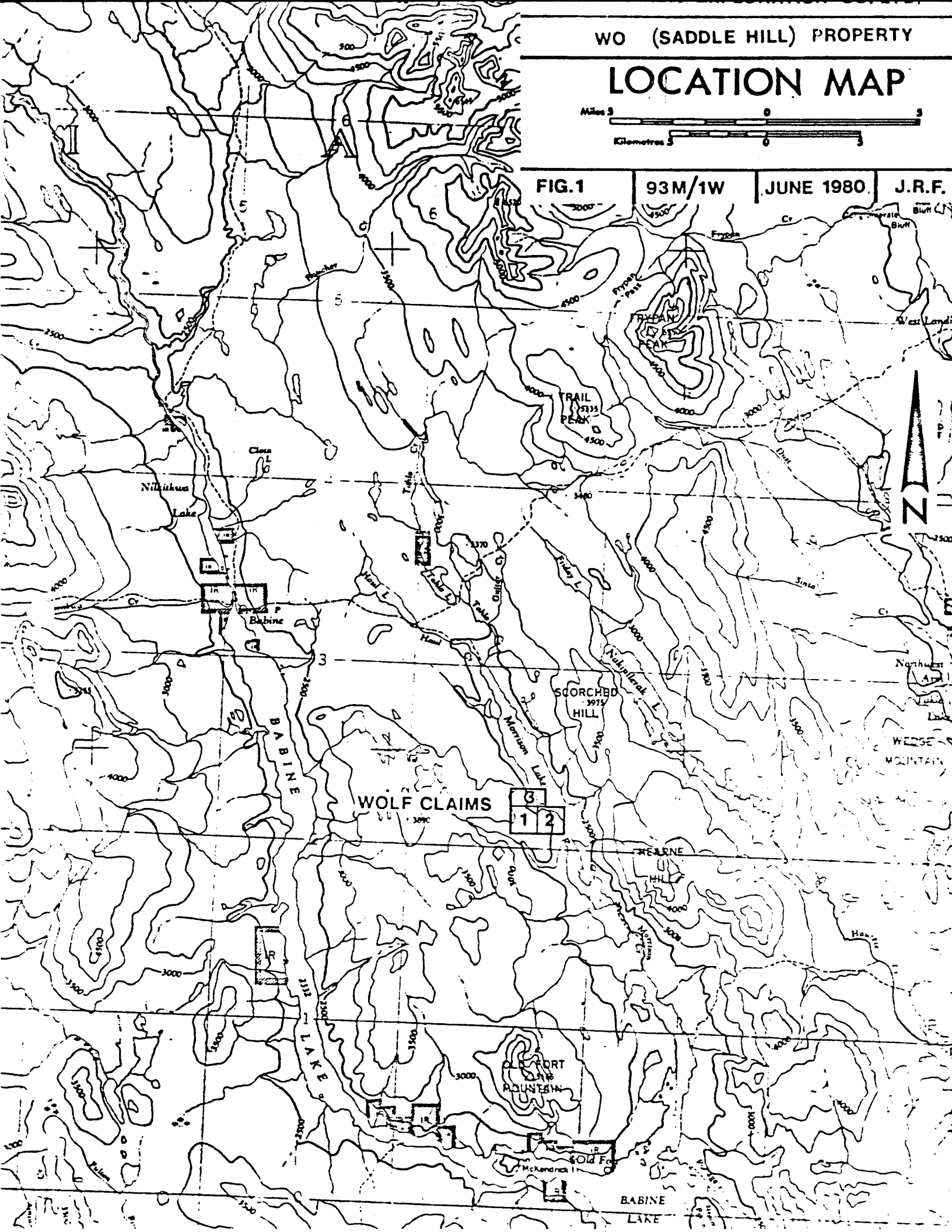


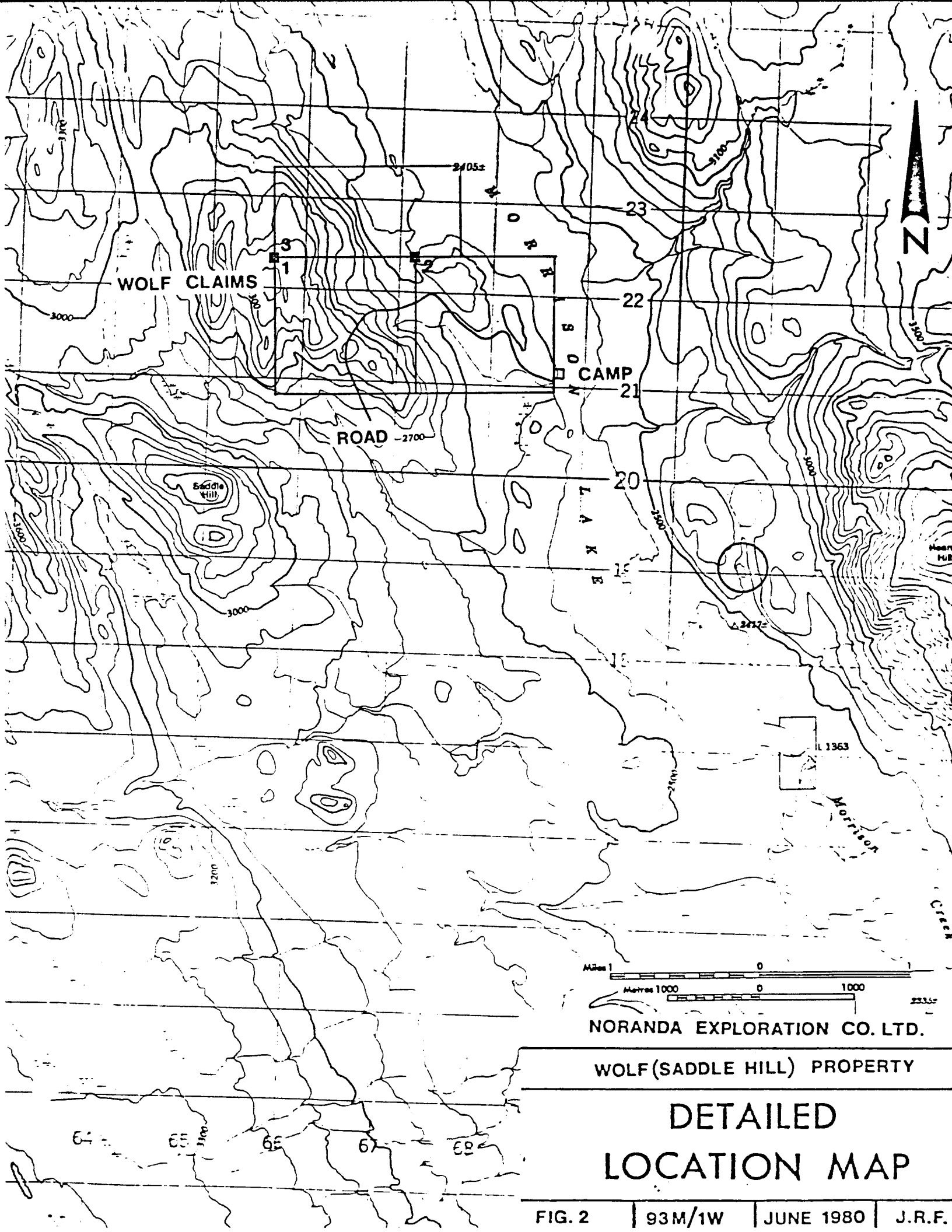
FIG. 1

93M/1W

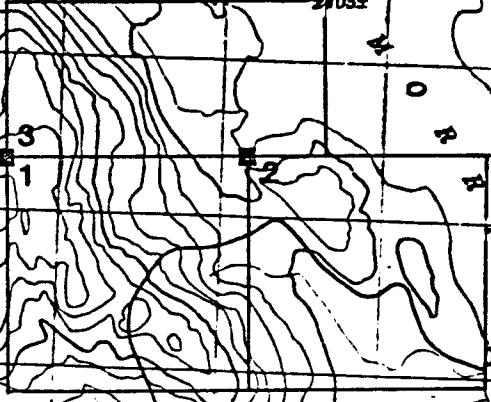
JUNE 1980

J.R.F.





WOLF CLAIMS



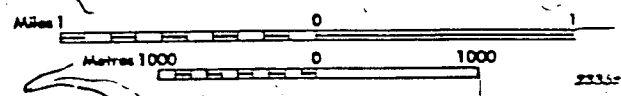
ROAD -2700

Saddle Hill

LAKESIDE

L 1363

MORRISON



NORANDA EXPLORATION CO. LTD.

WOLF (SADDLE HILL) PROPERTY

DETAILED LOCATION MAP

4. CLAIM DATA

<u>Claim</u>	<u>Record No.</u>	<u>Recorded</u>	<u>Anniversary</u>
Wolf 1 (9u)	1829	July 9, 1979	July 9, 1987
Wolf 2 (9u)	2259	November 9, 1979	November 9, 1987
Wolf 3 (<u>8u</u>)	2260	November 9, 1979	November 9, 1987
26 units			

The claims are owned by Noranda Exploration Company, Limited (No Personal Liability), P.O. Box 2380, Vancouver, B.C. V6B 3T5.

5. DIAMOND DRILLING

The drilling was contracted to Drilcor Industries Limited of Richmond, B.C. A Hydrawink hydraulic drill recovering BQ core was used to drill the hole. Problems related to water supply were encountered, the final solution being a 750 meter waterline from Morrison Lake.

The hole (SD-80-1) was collared at L3+75E at 3+60°N, bearing 230° at a 45° inclination; the total depth was 152.4 meters. Potential overburden problems were expected, but the hole was started with drill mud and its walls remained firm for the total thickness of overburden, 27.7 meters.

The log of the hole is presented in Appendix II with the assay intervals and values indicated. The core assays were undertaken by Rossbacher Laboratory in Vancouver. The core is stored at Noranda's Smithers office.

In general, the top of the hole is more altered to a depth of 48.8 meters. Its composition approximates that of the Biotite Feldspar Porphyry. The second BFP covers the interval of 135.4 - 144 meters and contains the two meters of 4% copper. The unaltered rock approximates a quartz monzonite in composition.

6. RECOMMENDATIONS

Additional drilling is required on the north contact of the intrusive to better define the alteration limits and locate potential economic chalcopyrite molybdenum mineralization.

Respectfully submitted,

Michael W. Leahey

APPENDIX I
STATEMENT OF COSTS

NORANDA EXPLORATION COMPANY, LIMITED

STATEMENT OF COST

PROJECT SADDLE HILL

DATE NOVEMBER 1980

TYPE OF REPORT DIAMOND DRILLING

a) Wages:

No. of Days 43
Rate per Day \$77.5118
Dates From: Aug 10 to Sept 15, 1980
Total Wages 43 x \$ 77.5118 3,333.01

b) Food and Accomodation:

No of days 43
Rate per day \$48.3381
Dates From: Aug. 10 to Sept. 15, 1980
Total Cost 43 x \$ 48.3381 2,078.54

c) Transportation:

No of days 43
Rate per day \$211.9586
Dates From: Aug. 10 to Sept. 15, 1980
Total Cost 43 X \$ 211.9586 9,114.22

d) Instrument Rental:

Type of Instrument
No of days
Rate per day \$
Dates From:
Total Cost X \$

Type of Instrument
No of days
Rate per day \$
Dates From:
Total Cost X \$

f) Analysis
(See attached schedule)

g) Cost of preparation of Report

Author	200.00	
Drafting	90.00	
Typing	300.00	590.00

h) Other: DRILCORE INDUSTRIES, DIAMOND DRILLING

Contractor	16,925.67	
Misc. Field and Camp Costs	13.50	
Supervision: D.E. Cross P. Eng. and G.E. Dirom P. Eng. 2 Days @ \$240.00	480.00	<u>17,419.17</u>

Total Cost 32,534.94

e) Unit costs for DRILLING

No of days

No of units 150 m

Unit costs \$216.8996 / m

Total Cost 150 x \$216.8996 32,534.94

APPENDIX II
DRILL LOG SD-80-1

NORANDA EXPLORATION COMPANY, LIMITED

Collared Aug. 5/80	Completed Aug. 24/80	Core Size BQ	Property Saddle Hill	Project No 10	NTS No. 93M/1E
FIELD COORDINATES			SURVEYED COORDINATES		
Lat. L3 + 75E	Elev. ~800 m	Dip -45°	Lat.	Elev.	Dip
Dep. 3 + 60N	Depth 152.4 m	Bearing 230°	Dep.	Depth	Bearing
					Sheet 1 of 5
					Hole No. SD-80-1

metres	Rec'y	Graphic Log	Description	% Sulp.	Est. Grade	Sample No.	Lt.	Sample Int.	Cu
0-27.7			OVERBURDEN						
7.3-29.3			BIOTITE FELDSPAR PORPHYRY			J5101	1.5	28.8-29.3	0.01
			@ 28 12 mm qtz vein @ 15° to ca						
			@ 29.3 qtz veinlets @ 45° to ca						
9.3-33.5			BIOTITE FELDSPAR PORPHYRY - argillaceous talc alteration, thin graphite shears 15° to ca, relic quartz grains.						
3.5-35.1			BIOTITE FELDSPAR PORPHYRY - chloritic, potassic alteration and quartz veining.			J5103	1.5	33.5-35.0	0.07
			34.7 disseminated chalcopyrite						
			34.9 disseminated chalcopyrite						
			34.98 Po in quartz vein 10°-20° to ca						
5.1-35.7			BIOTITE FELDSPAR PORPHYRY - quartz monzonite gradational contact.			J5104	1.5	35.0-36.5	0.03
			35.4 chalcopyrite island						
5.6-48.8			QUARTZ MONZONITE			J5105	1.5	36.5-38.1	0.01

DATE _____

LOGGED BY *M. L. W. L.*

NORANDA EXPLORATION COMPANY, LIMITED

Collared		Completed		Core Size		Property Saddle Hill			Project No 10			NTS No.		
FIELD COORDINATES						SURVEYED COORDINATES						Sheet 2 of 5		
Lat.		Elev.		Dip		Lat.		Elev.		Dip		Hole No.		
Dep.		Depth		Bearing		Dep.		Depth		Bearing		SD-80-1		
metres	Rec'y	Graphic Log	Description					% Sulp.	Est. Grade	Sample No.	Lt.	Sample Int.		Cu
			36 qtz vein 20° to ca with chlorite halo 25 mm above and											
			12 mm potassic halo below											
			36.6 chalcopryrite bleb											
			38.1-38.4 25 mm wide alteration zone sericite, k spar,							J5106	0.3	38.1-38.4	0.03	
			qtz with Po and Cpy @ 20° to ca											
			40.7-41 thin K spar quartz chalcopryrite veinlet							J5107	2.9	38.4-41.3	0.01	
			41.3 chalcopryrite, thin K spar quartz vein 45° to ca											
			42.6 K spar qtz, Py veinlet											
			45.7 serpentized shear zone											
			48.5-48.8 serpentized shear zone											
8.8-89.3			QUARTZ MONZONITE TO GRANODIORITE in composition. Percen-											
			tage of mafic minerals increases.											
			50.3 K spar, talc, quartz shear											
			52.6-52.9 K spar, quartz alteration; chalcopryrite in vein											
			running along core for 75 mm.											

NORANDA EXPLORATION COMPANY, LIMITED

Collared		Completed		Core Size		Property Saddle Hill			Project No 10		NTS No.		
FIELD COORDINATES						SURVEYED COORDINATES						Sheet 3 of 5	
Lat.		Elev.		Dip		Lat.		Elev.		Dip		Hole No.	
Dep.		Depth		Bearing		Dep.		Depth		Bearing		SD-80-1	
metres	Rec'y	Graphic Log	Description					% Sulp.	Est. Grade	Sample No.	Lt.	Sample Int.	Cu
			56.1-56.4 serpentine, talc shear zone										
			57.6 serpentine on fracture surface										
			62.1 quartz, minor K spar, serpentine										
			63.1 quartz, serpentine										
			77.7 150 mm barren quartz vein										
			80.8-82.3 potassic alteration										
			85.4 12 mm qtz vein open space filling with Po										
			88.4-89.3 saussuritized Ca feldspar										
9.3-92.1			BIOTITE QUARTZ MONZONITE - Po along sheared narrow fractures.										
			93-94.2-sheared blue serpentine										
			96.2-serpentine on fracture										
			99.7-chalcopyrite along fracture 25° to ca										
			100.6-Po, Py on fracture							J5108	2.74	108.2-111	0.01
111-116.5			BIOTITE FELDSPAR PORPHYRY - biotite very fresh; Cu feld-							J5109	2.0	111-113.6	0.01
			spars highly saussuritized, argillaceous with pink color.							J5110	2.6	113.6-116	0.01

NORANDA EXPLORATION COMPANY, LIMITED

Collared		Completed		Core Size		Property Saddle Hill			Project No 10		NTS No.			
FIELD COORDINATES						SURVEYED COORDINATES						Sheet 4 of 5		
Lat.		Elev.		Dip		Lat.		Elev.		Dip		Hole No.		
Dep.		Depth		Bearing		Dep.		Depth		Bearing		SD-80-1		
metres	Rec'y	Graphic Log	Description					% Sulp.	Est. Grade	Sample No.	Lt.	Sample Int.	Cu	
			114.3-114.6-disseminated Po											
			113.2-25 mm, 12 mm quartz veins 10° and 15° to ca											
			116.2-116.5-grey and green clay											
16.5-134.1			BIOTITE QUARTZ MONZONITE - fresh biotite											
			119.5-119.8-chlorite sericite clay zone; no mineralization											
			120.3-120.6-saussuritized, chlorite, K spar, qtz vein 15°											
			to ca											
			123.5-Py with qtz on fracture											
			126.7-127.4-sheared saussuritized chlorite zone											
			134.1-25 mm chlorite qtz vein parallel to ca											
35.4-144			BIOTITE FELDSPAR PORPHYRY - altered; greater abundance of							J5111	3.35	135.5-139	0.01	
			quartz veining; groundmass altered.											
			137.3-quartz K spar veinlet 20° to ca; chalcopyrite and											
			pyrite											
			138.9-140.2-0.7 m of economic interest;					3%	2% Cu	J5112	0.9	139.1-140.2	4.20	

APPENDIX III
DRILL HOLE LOCATION

APPENDIX IV
STATEMENT OF QUALIFICATIONS

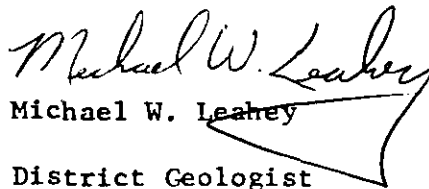
STATEMENT OF QUALIFICATIONS

I, Michael W. Leahey, of the town of Smithers, Province of British Columbia, do certify that:

1. I have been an employee of Noranda Exploration Company, Limited since May 1973.
2. I am a graduate of St. Francis Xavier University in Antigonish, N.S. with a Bachelor of Science Major in Geology (1973).

Dated at Smithers

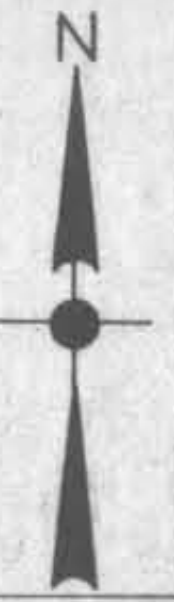
this 7th day of November, 1980


Michael W. Leahey

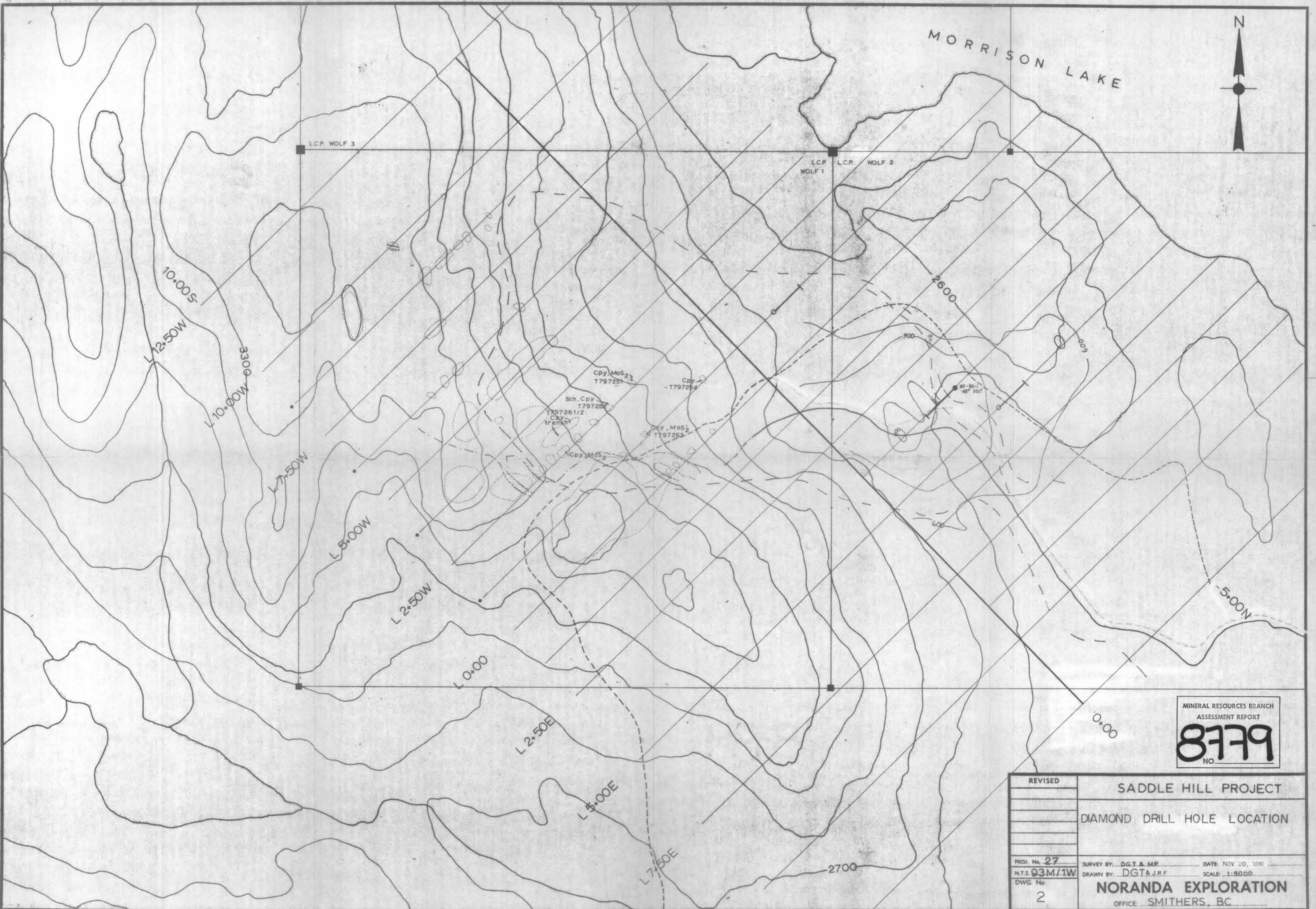
District Geologist

Noranda Exploration Company, Limited

(No Personal Liability)



MORRISON LAKE



MINERAL RESOURCES BRANCH
ASSESSMENT REPORT
8779
NO.

REVISED	SADDLE HILL PROJECT	
	DIAMOND DRILL HOLE LOCATION	
PROJ. No. 27	SURVEY BY: DGT & MP	DATE: NOV 20, 1980
N.T.S. Q3M/1W	DRAWN BY: DGT & J.R.F.	SCALE: 1:5000
DWG. No. 2	NORANDA EXPLORATION OFFICE: SMITHERS, BC	