

C. J. Coveney, P.Eng.

CONSULTING GEOLOGIST

4024 DELBROOK AVENUE  
NORTH VANCOUVER, B. C.  
PHONE (604) 987-3606

GEOCOR ENERGY HOLDINGS LTD.

REPORT

ON

MOLLY GIBSON PROPERTY

GREENWOOD MINING DIVISION

BRITISH COLUMBIA

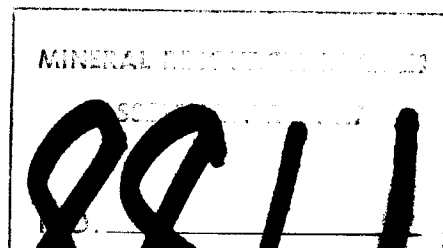
Latitude 49° 05' N

Longitude 118° 07' W

BY

C. J. COVENEY, P. ENG.  
CONSULTING GEOLOGIST

May 21, 1981.



Vancouver, B.C.

C. J. Coveney, P.Eng.

CONSULTING GEOLOGIST

4024 DELBROOK AVENUE  
NORTH VANCOUVER, B. C.  
PHONE (604) 987-3606

May 21, 1981.

Gecker Energy Holdings Ltd.,  
908 West 7th Ave.,  
Vancouver, B.C.  
V5Z 1G3

ATTENTION: C. H. STANLEY

Dear Sir:

The following is a report of the work, carried out on the Molly Gibson Property during 1980, for submission to the Department of Mines as verification of affidavits for assessment credits.

Sincerely,



C. J. Coveney, P. Eng.,  
Consulting Geologist.

CJC:f

TABLE OF CONTENTS

	<u>Page</u>
SUMMARY .....	1
INTRODUCTION .....	3
LOCATION AND ACCESS .....	3
HISTORY .....	3
CLAIMS .....	4
PROPERTY .....	4
DIAMOND DRILL HOLE (80-1) .....	5
LOG OF DIAMOND DRILL HOLE (80-1) .....	6
EXPENSES .....	8
QUALIFICATIONS .....	9

FIGURE 1	-	LOCATION	(In Pocket)
FIGURE 2	-	CLAIM MAP SHOWING LOCATION OF DRILL HOLE	( " )
FIGURE 3	-	CLAIM MAP	( " )
FIGURE 4	-	DRILL HOLE SECTION	( " )

**C. J. Coveney, P.Eng.**

CONSULTING GEOLOGIST

4024 DELBROOK AVENUE  
NORTH VANCOUVER, B. C.  
PHONE (604) 987-3606**MOLLY GIBSON PROPERTY  
GREENWOOD MINING DIVISION  
BRITISH COLUMBIA****SUMMARY**

The Molly Gibson property, consisting of seven claims, is located in the Greenwood Mining Division in southern British Columbia between 1310 - 1525 metres in elevation. Geographically, the claim block is in the vicinity of 49° 05' North Latitude and 118° 07' West Longitude.

An access dirt road leaves the Christina Lake - Kinnaird Highway near Paulson bridge. The road trends in a southerly direction climbing the steep west slope of McRae Creek valley. From the turn-off the distance to the property is about 6 Km.

The property has been known for a number of years and during that time has been explored by various groups. Some shipments were made from time to time but the aggregate tonnage was small. The property has never been successfully operated and this appears to be due mainly to the erratic distribution of the mineralization and consequently lack of sufficient tonnage.

The rocks underlying the property consist of limestones and argillaceous sediments that have been altered and silicified. The assemblage strike about N 20° W with steep easterly dips. Numerous granitic dykes cut the sediments.

Mineralization is mainly weak pyrrhotite, pyrite, galena and sphalerite with some gold and silver values. The mineralization occurs in

erratic lenses in the more highly altered sections of the sediments. The property appears to be of the bedded type but whether the mineralization is confined to a particular stratigraphic horizon or to several horizons is as yet uncertain.

The rock from the hole drilled in 1980, on the Adastra #3 claim, is mainly a hard, dense and siliceous argillite that is well banded and showing fine laminae preservations of the original sediment. The last 8.09 metres of the hole is a coarse grained biotite syenite with well developed crystals of biotite that in places are altered to chlorite.

No mineralization was encountered in the hole.

The total expenditures amounted to \$7162.91. It is requested that \$4800 be applied to the claims and \$2362.91 be placed in the P.A.C. Account.

The drill core is stored for reference at the residence of Mr. M. M. Cashman, 622 West 19th Avenue, Vancouver, B.C. V5Z 1X1

MOLLY GIBSON PROPERTY  
GREENWOOD MINING DIVISION  
BRITISH COLUMBIA

INTRODUCTION

At the request of Gecker Energy Holdings Ltd. of Vancouver, B.C., and accompanied by Mr. Corby Stanley, I visited the Molly Gibson property on September 20, 1980. The property, comprising seven claims, is located in the Greenwood Mining Division in southeastern British Columbia. (Figure - 1). The area covered by the claims is generally rugged and bush covered with elevations ranging from 1310 to 1525 metres.

LOCATION AND ACCESS

The property is located about 4.0 Km southwest of Paulson near the headwaters of Josh Creek. Geographically, the claim block is in the vicinity of 49° 05' North Latitude and 118° 07' West Longitude.

Access is by a dirt road which leaves the Christina Lake-Kinnaird Highway just west of the Paulson bridge. The access road, where it leaves the junction, climbs along the steep west wall of McRae Creek valley gaining about 366 metres in elevation in the 6 Km to the property.

HISTORY

The property has been explored by various groups in the past by shafts, adits and open-cuts but has never been successfully operated. The property was first explored in the early 1900's and some ore shipments have been made throughout the years - notably 1909, 1920 and 1933. Since 1937 only sporadic development has been carried out. The lack of success of the operation is due to several factors, chief among which is the erratic lenticular nature of the ore bodies and an inadequate water supply.

In July 1980 Gecker Energy Holdings Ltd. drilled one AEX core size drill hole to a depth of 31.64 metres on the Adastral #3 claim.

CLAIMS (Figures 2 & 3)

The following claims comprising the property were optioned from Herman Hoehn of Grand Forks, B.C., by Geoker Energy Holdings Ltd. of Vancouver, B.C., with registered office at:

Sikula, Yager, Werbes and Longpre,  
1199 West Pender Street,  
9th Floor,  
Vancouver, B.C.

<u>CLAIM</u>	<u>RECORD NO.</u>	<u>NO. OF UNITS</u>	<u>EXPIRY DATE</u>
PV	-	1	25 July 1980
PV-#1	-	2	"
Molly Gibson	-	3	25 July 1980
White Swan	-	1	7 August 1980
Adastra	-	2	7 August 1980
Adastra #2	-	2	11 August 1980
Adastra #3	-	1	11 August 1980

PROPERTY

The rocks, in the vicinity of the workings, belong to the Mount Roberts Formation of Pennsylvanian and/or Permian age, and consist of limestone, altered and silicified limy and argillaceous sediments that strike north to N 20° W with an easterly dip varying from 45° to 75°. The sediments have been invaded by a number of dykes of diorite and syenite. In places, some of the limy sediments have a hard, dense and silicified appearance containing patches of chert.

Mineralization consists of weak pyrrhotite, pyrite, galena and sphalerite with the best mineralization appearing to be associated with sedimentary rocks that are the most highly altered. Obviously, some gold must be present as some of the old shipments showed good grades in both gold and silver — more than likely the ore shipped was hand sorted.

The mineralization occurs in erratic, discontinuous lenses and it is uncertain as to whether they are confined to a definite stratigraphic horizon or haphazardly distributed within those sections of the sediments that are highly altered.

DIAMOND DRILL HOLE (Figure 4)

(80-1)

In July 1980 Gecker Energy Holdings Ltd. drilled an AEX core size drill hole on the Adastra #3 claim. The hole was positioned 20 metres southeast of the No. 2 adit. The purpose of the hole was to test for the down-dip projection of any mineralization that might be beyond the face of the adit. The hole was drilled on a bearing of N 30° W and a minus 65° dip for a length of 31.64 metres. The intention of the hole was to cut the sediments at nearly a right angle but due to an unfortunate error the hole angled across the bedding.

No mineralization was encountered in the hole. The last 8.09 metres of the hole penetrated a coarse grained biotite syenite indicating that the intrusive syenite occurs at a shallow depth below the surface. Other than the syenite intrusive and two narrow dykes, the core is mainly a hard, flinty and siliceous argillite. The rock is well banded and, in places, the fine laminae of the original sedimentation is well preserved.



Location of D. D. Hole

Molly Gibson Property  
 Adastra #3  
 Greenwood M. D. B.C.

Record No. 92(8)

Hole No.	- 80-1	Length of Hole	- 31.64 metres
Core Size	- ALX	Vertical Length	- 28.67 "
Bearing of Hole	- N 35° W	Horizontal Length	- 13.37 "
Dip of Hole	- -65°	Date Started	- 27 June 1980
Elevation of Hole	- 1372 metres	Date Finished	- 22 July 1980

<u>From</u> (Metres)	<u>To</u> (Metres)	<u>Description</u>
0.0	- 2.13	No core
2.13	- 6.75	Greyish impure siliceous to quartzitic argillite. Generally well banded 75° to core.
6.75	- 6.91	Buttons of white quartz. No mineral observed.
6.91	- 10.67	Black siliceous argillite. Some good banding 70° to core with threadlike bands of calcic silicates or quartz. Section shows some miniature drag folding and faulting. Last 0.05 metres shows chilled contact with following section: ; Chilled margin is 45° to core.
10.67	- 11.22	Syenite dyke.
11.22	- 14.93	Black carbonaceous argillite with paper thin bands of white quartz or calcic silicates (?) at 65° to core.
14.93	- 16.76	Greyish brown siliceous trachyte. (Rock may be a siliceous cherty argillite.) Brownish colored patches are banded 45° to core.
16.76	- 17.11	Silicified limestone. Good banding 35° to core.
17.11	- 18.64	Grey and black carbonaceous limestone with threadlike bands of calcic silicates 45° to core.
18.64	- 19.40	Syenite dyke.
19.40	- 20.72	Grey siliceous limestone.
20.72	- 23.55	Fine grained siliceous argillite with thin white bands of calcic silicates (?) or quartz. As following section is approached the core has pinkish feldspars and thin threadlike bands of chlorite. The last 0.25 metres shows a chilled margin.

<u>From</u> (Metres)	<u>To</u> (Metres)	<u>Description</u>
23.55	- 31.64	Biotite syenite. The rock is coarse grained and dark grey in color with well developed crystals of biotite which in places are altered to chlorite.

END OF HOLE

NOTE: The rock appears to be for the most part (aside from the syenite) a hard, flinty and siliceous argillite that originally may have been a limy sediment. The rock is well banded with preservation of the fine laminae of the original sediment.

CORE RECOVERY

Length of core recovered - 24.50 metres

$$\% \text{ Recovery} = \frac{24.50 \times 100\%}{31.64} = 77.4\%$$

EXPENSES

<u>CHEQUE NO.</u>	<u>DATE</u>	<u>PARTICULARS</u>	<u>AMOUNT</u>
8020	20 June/80)		
8026	4 July/80)	Cash expenses	\$ 1000.00
8022	27 June/80	Cat work	350.00
8023	30 June/80)	Drillers' wages:	
8025	2 July/80)	D. Cashman	
8027	7 July/80)	A.R. Topp	
8032	22 July/80)	Holoboff	
8033	22 July/80)		
8034	22 July/80)		4180.00
8028	14 July/80	Hotel expenses for drillers	150.85
8029	14 July/80	Drilling supplies	1362.06
8035	22 July/80	Equipment rental	<u>120.00</u>
			<u>\$ 7162.91</u>

Apply \$4800 to claims listed below:

			<u>Record No.</u>
2 years	July	PV 1	82
2 years	July	PV	83
2 years	July	Moly Gibson	84
2 years	August	White Swan	88
2 years	August	Adastra	89
2 years	August	Adastra #2	91
2 years	August	Adastra #3	92

Put \$2362.91 in P.A.C. Account

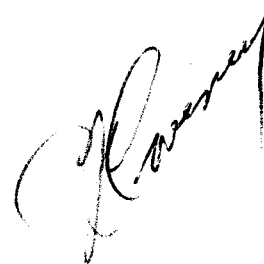


C. J. Coveney, P. Eng.,  
Consulting Geologist.

QUALIFICATIONS

I, C. J. COVENEY, am a Registered Professional Engineer in British Columbia. I graduated from the University of New Brunswick in 1939 with a Bachelor of Science degree in geology. My graduate studies were done at the University of Toronto and in 1941 I received a Master's degree in geology. Since 1967 I have been practicing my profession as a consulting geologist. My experience spans over 30 years on property examinations and evaluations in most parts of Canada, various parts of United States, Mexico and Thailand.

I do not hold nor do I expect to hold any interests in Gecker Energy Holdings Ltd.





# CHEMEX LABS LTD.

212 BROOKSBANK AVE.  
 NORTH VANCOUVER, B.C.  
 CANADA V7J 2C1  
 TELEPHONE: 373-5785 954-0221  
 AREA CODE: 604  
 TELEX: 043-52597

• ANALYTICAL CHEMISTS • GEOCHEMISTS • REGISTERED ASSAYERS

## CERTIFICATE OF ASSAY

CERTIFICATE NO. 68811

TO: GEOKOR  
 #3 - 960 W. 13th Ave.  
 Vancouver, B.C.

INVOICE NO. 37140

RECEIVED July 3, 1980

ATTN: V5Z 1P3  
 C. Stanley

*PT. EHOLT PROPERTY*

ANALYSED July 22, 1980

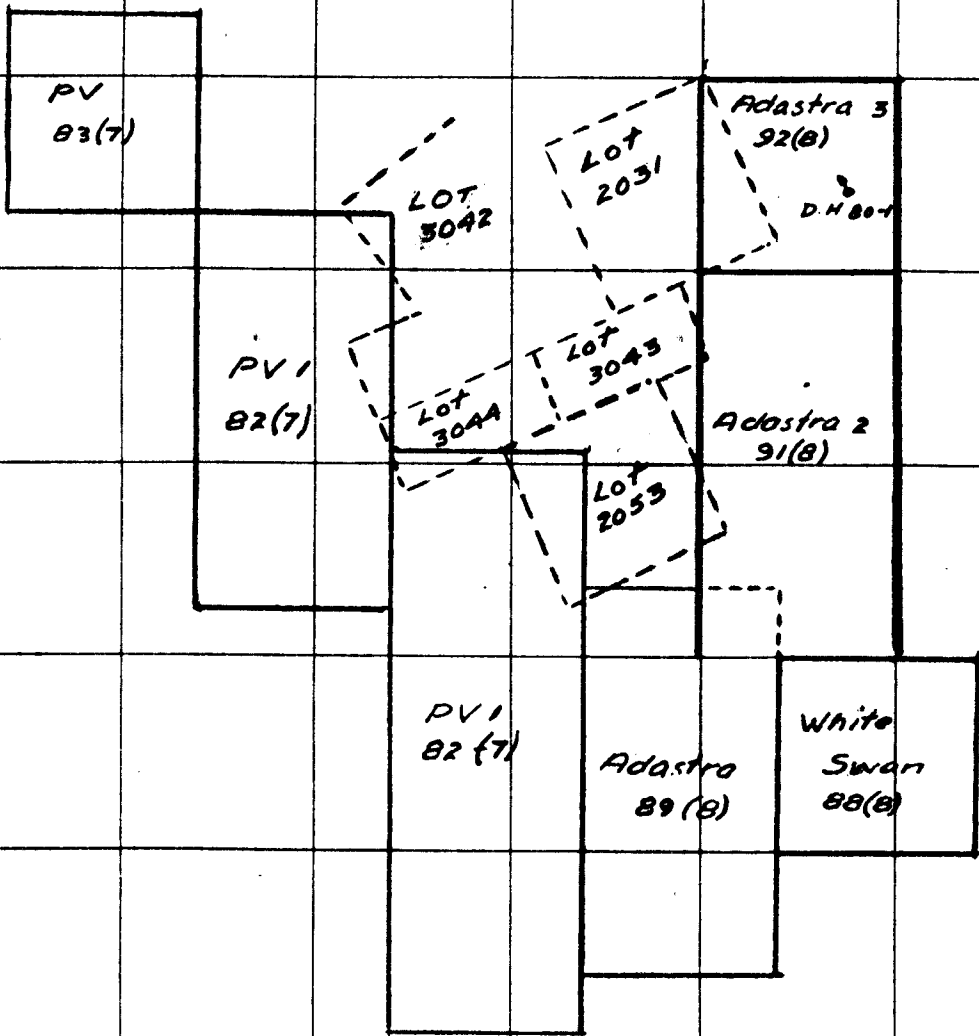
SAMPLE NO. :	%	%	oz/ton	oz/ton
	Cu	Ni	Ag	Au
31624	0.03		0.01	<0.003
31625	0.25	<0.01	0.04	0.005
31626	0.10		0.02	0.003
31627	0.27	<0.01	0.08	0.005
31628	0.31	<0.01	0.06	0.012
31629	0.31	<0.01	0.08	0.010
31630	0.17		0.10	0.005
31631	0.17		0.16	0.005
31632	0.17		0.08	0.003

MINERAL RESOURCES BRANCH  
 REPORT  
 NO. **8812**



MEMBER  
 CANADIAN TESTING

*[Signature]*



Note: Claim size, bearing, and scale are from the prospector's claim map

8811

GEOCOR ENERGY HOLDINGS LTD  
 MOLLY GIBSON PROPERTY  
 GREENWOOD M.D. B.C.






1500 0 1500 ft

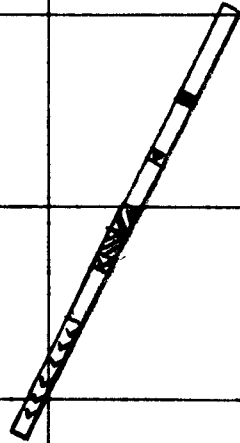
14 Oct. 1980

Figure-3

D.H 80-1 Elev 1372 m.

LEGEND

-  Siliceous argillite
-  Quartz vein
-  Volcanic (?) Trachyte
-  Limestone
-  Biotite syenite



8811

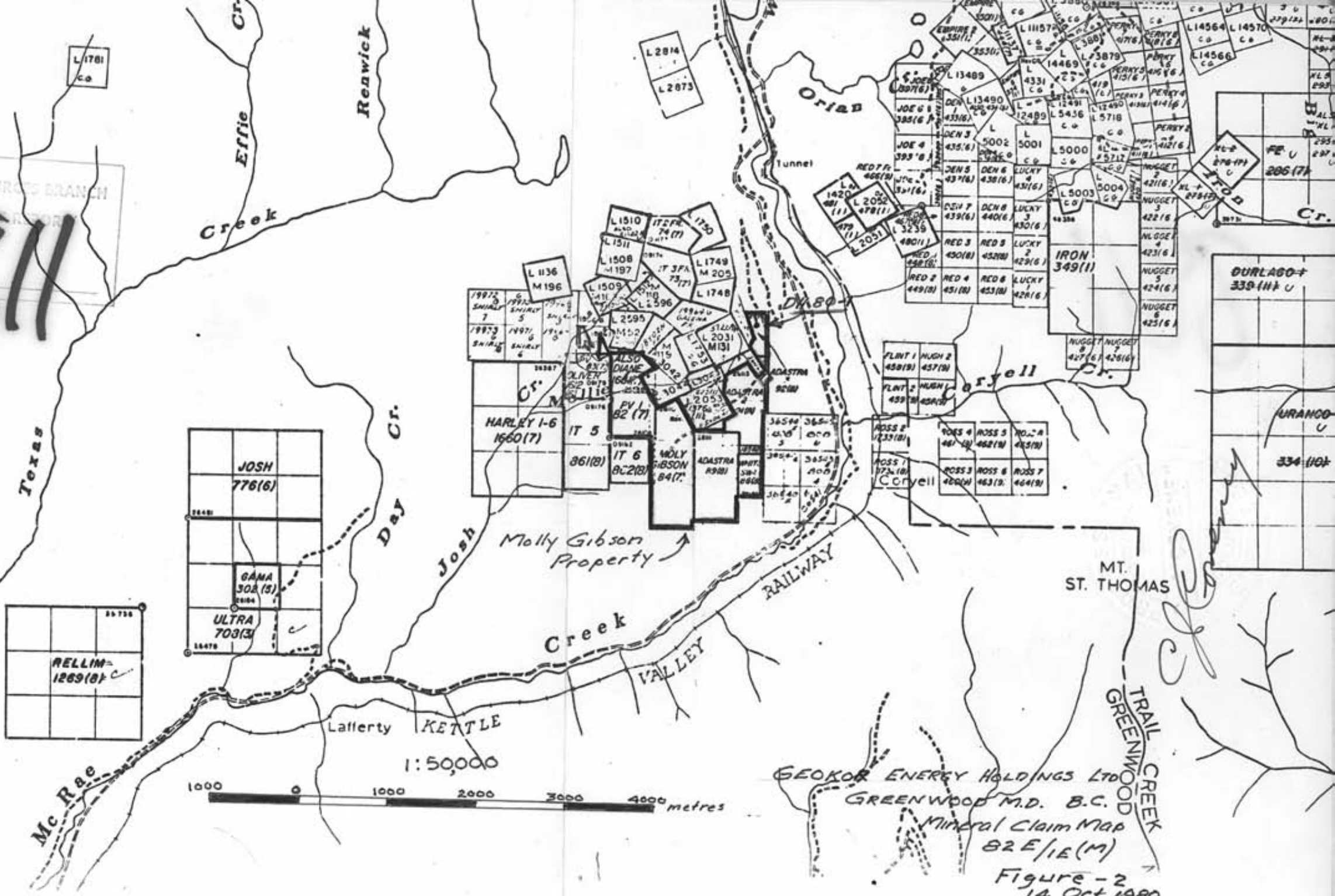
GEOCOR ENERGY HOLDINGS LTD.  
ADAstra #3  
GREENWOOD M.D. B.C.  
1:500



Figure -4

14 Oct 1980

MINERAL RESOURCES BRANCH  
8811



GEOKOR ENERGY HOLDINGS LTD  
 GREENWOOD M.D. B.C.  
 Mineral Claim Map  
 82 E/1 E (M)  
 Figure - 2  
 14 Oct 1980

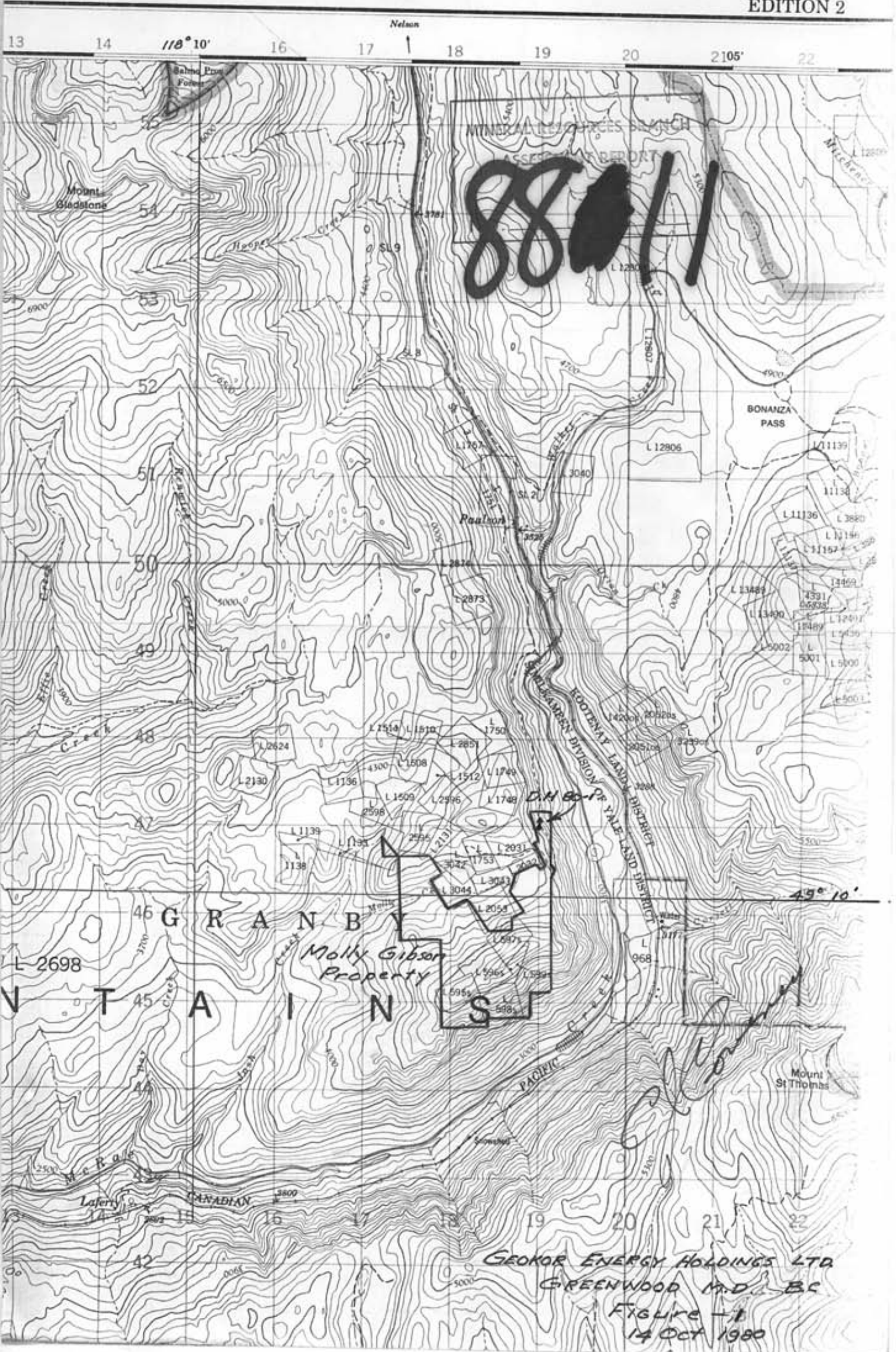


1: 50,000

1000 0 1000 2000 3000 4000 metres

GRAND FORKS  
82 E/

EDITION 2



**88011**

Molly Gibson  
Property

GEORGE ENERGY HOLDINGS LTD  
GREENWOOD M.D. BC  
FIGURE - 1  
14 OCT 1980