

**C. J. Coveney, P.Eng.**

CONSULTING GEOLOGIST

4024 DELBROOK AVENUE  
NORTH VANCOUVER, B. C.  
PHONE (604) 987-3606

GEOKOR ENERGY HOLDINGS LTD.

REPORT

ON

PT. HOLT CLAM

(Record Number 1810(10))

GREENWOOD MINING DIVISION

BRITISH COLUMBIA

Latitude  $49^{\circ} 19.5' N$       Longitude  $118^{\circ} 32.5' W$

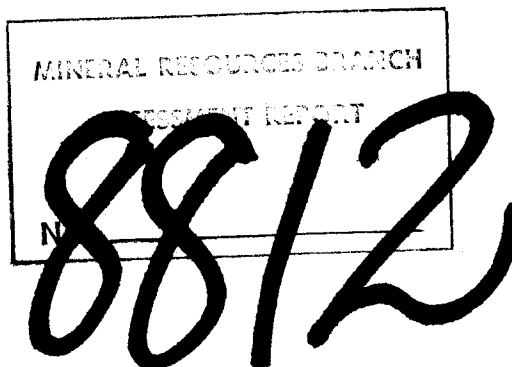
by

**C. J. COVENEY, P. ENG.**

Consulting Geologist

May 21, 1981.

Vancouver, B.C.



C. J. Coveney, P.Eng.

CONSULTING GEOLOGIST

4024 DELBROOK AVENUE  
NORTH VANCOUVER, B. C.  
PHONE (604) 987-3606

May 21, 1981.

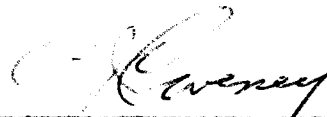
Geoker Energy Holdings Ltd.,  
908 West 7th Ave.,  
Vancouver, B.C.  
V5Z 1G3

ATTENTION: C. H. STANLEY

Dear Sir:

The following is a report of the work, carried out on the Pt. Eholt Property during 1980, for submission to the Department of Mines as verification of affidavits for assessment credits.

Sincerely,



C. J. Coveney, P. Eng.,  
Consulting Geologist.

CJC:f

TABLE OF CONTENTS

	<u>Page</u>
SUMMARY .....	1
INTRODUCTION.....	3
LOCATION AND ACCESS.....	3
CLAIM.....	3
PROPERTY.....	4
DIAMOND DRILL HOLE.....	4
CORE ASSAYS.....	5
COMMENTS.....	5
DRILL LOG.....	7
EXPENSES.....	9
QUALIFICATIONS.....	10

FIGURE 1	LOCATION MAP	(In pocket)
FIGURE 2	CLAIM MAP	( " )
FIGURE 3	PROPERTY MAP	( " )
FIGURE 4	SECTION OF D.D. HOLE	( " )
CERTIFICATE OF ASSAY FROM CHEMEX LABS LTD.		( " )

# C. J. Coveney, P.Eng.

CONSULTING GEOLOGIST

4024 DELBROOK AVENUE  
NORTH VANCOUVER, B. C.  
PHONE (604) 987-3606

(1)

## PT. EHOLT PROPERTY GREENWOOD M.D., B.C.

### SUMMARY

The PT. EHOLT property, which was under option to GEOKOR ENERGY HOLDINGS LTD., is located in the Greenwood Mining Division in southern British Columbia. Geographically, the centre of the property is approximately  $118^{\circ} 22.5'$  west longitude and  $49^{\circ} 10.5'$  north latitude.

Access to the property is via Highway #3 by following a dirt road north from Eholt for a distance of 2.5 Km.

The workings on the property consist of six old shallow shafts or pits and five short trenches. Little or no mineralization was observed in the shafts and the trenches are now caved.

Rock outcrops are scarce, the only rock seen in place was a fine, dense greenstone in the walls of the shafts.

One AEX core size drill hole was drilled in the northwest part of the property in June 1980 to test the ground beneath the north-south aligned shafts. The hole was drilled at a minus  $45^{\circ}$  angle for a length of 44.09 metres. The last 12.4 metres of the hole penetrated a coarse pinkish syenite which showed a chilled margin with the overlying volcanics. The hole encountered 10.16 metres of pyrrhotite mineralization with no significant values in copper, gold or silver.

No trend to the mineralization could be determined although the drill hole suggests that the mineralization may be of the contact type rather than a simple vein structure.

(2)

From the information available it would appear that surface greenstones are part of the Anarchist Group of rock that have been intruded by the Coryell syenite at a shallow depth.

The drill core was split in half. One half was sent for assay to Chemex Labs Ltd. in Vancouver, B.C. The remaining half is stored for reference at the residence of Mr. H. M. Cashman, 622 West 19th Avenue, Vancouver, B.C. V5Z 1X1.

The total expenditures amounted to \$10487.42. It is requested that \$4200 be applied on the Pt. Eholt Claim and \$6287.42 be placed in the P.A.C. Account.

**PT. EHOLT PROPERTY**  
**GREENWOOD M.D., B.C.**

**INTRODUCTION**

On the 20th September 1980, accompanied by Mr. Corby Stanley, I visited the PT. EHOLT PROPERTY which was under option to GEOKOR ENERGY HOLDINGS LTD. of Vancouver, British Columbia. The property consists of one claim of six units and is situated in the Greenwood Mining Division in southeastern British Columbia. Geographically, the centre of the claim is approximately 118° 22.5' west longitude and 49° 20.5' north latitude. (Figure - 1.)

The purpose of the visit was to examine a trench that had a reported grade of 1.0% Cu., 0.45 oss. Au., and 1.00 oss. Ag. and formulate an opinion as to the merit of the property.

**LOCATION AND ACCESS**

The property is located about 12 miles north of Grand Forks and is accessible by Highway #3 from Eholt. From here a dirt road can be followed north for 2.5 Km to the property.

**CLAIM** (Figure - 2)

The following claim, situated in the Greenwood Mining Division, B. C., was optioned by Geokor Energy Holdings Ltd. of Vancouver, B.C., from Herman Hoehn of Grand Forks, B.C. The registered office of Geokor Energy Holdings Ltd. is:

Sikula, Yager, Werbes and Longre,  
1199 West Pender Street,  
9th Floor,  
Vancouver, B.C.

<u>Claim</u>	<u>Record No.</u>	<u>No. of Units</u>	<u>Expiry Date</u>
Pt. Eholt	1810 (10)	6	9 Oct. 80

PROPERTY (Figure - 3)

The area examined is bush covered except in the vicinity of the old workings. They consist of six shallow shafts or pits aligned in a north-south direction and five short trenches at an elevation of approximately 1113 metres. Several of the shafts contain water. The depth to the water level, in what appeared to be the deepest shaft, was about 3.6 metres. All trenches are caved.

Rock outcrops are scarce -- the only rocks exposed were in the walls of the shafts. The rock is fine and dense and best classified as a greenstone of probably andesite or trachyte origin. Some syenite float was also observed near the workings. Little or no mineralization was seen in the shafts, although there was some minor oxidized stain. A few pieces of mineralized material on a small dump showed weak chalcopyrite and pyrite mineralization associated with calcite and quartz.

DIAMOND DRILL HOLE (Figure - 4)  
(80-1)

In June 1980 an AEX core size drill hole was drilled in the north-west part of the property. The purpose of the hole was to test the ground beneath the north-south aligned shallow shafts. The hole was drilled at a minus 45° angle for a length of 44.09 metres. Four rock units were encountered in the hole:

- (1) A light grey volcanic which is tentatively classified as a trachyte.
- (2) A narrow augite porphyry dike.
- (3) Two feldspar porphyry dikes -- one with a width of 2.78 metres and the other with a width of 4.39 metres. Both dikes show chilled margin contacts with the trachyte.
- (4) A well defined pinkish coarse syenite. The last 12.4 metres of the hole are composed of this rock type. The syenite has a coarse grained chilled section where it is in contact with the overlying trachyte.

Although most of the trachyte shows some weak disseminated pyrite, the bulk of the mineralisation occurs in a 10.16 metre trachyte section between the feldspar porphyries. The main mineral is pyrrhotite which, in some places, is quite massive with occasional specks of chalcopyrite and disseminated pyrite.

#### CORE ASSAYS

The drill core was split in half with one half going for assay and the other half retained. The retained half is stored at the residence of Mr. M. M. Cashman, 622 West 19th Avenue, Vancouver, B.C. V5Z 1X1. The assaying was done on July 22, 1980 by Chemex Labs Ltd. of Vancouver, B.C. The certificate of Assay is attached with this report.

<u>SAMPLE NO.</u>	<u>FROM - TO</u> (Metres)	<u>INTERVAL</u> (Metres)	<u>CU</u> %	<u>NI</u> %	<u>AG</u> oz	<u>AU</u> oz
31624B	10.05 - 11.50	1.45	0.03		0.01	< 0.003
31625B	11.50 - 12.54	1.04	0.25	< 0.01	0.04	0.005
31626B	12.54 - 14.12	1.58	0.10		0.02	0.003
31627B	14.12 - 15.64	1.52	0.27	< 0.01	0.08	0.005
31628B	15.64 - 17.16	1.52	0.31	< 0.01	0.06	0.012
31629B	17.16 - 18.69	1.53	0.31	< 0.01	0.08	0.010
31630B	18.69 - 20.21	1.52	0.17		0.10	0.005
31631B	29.46 - 30.88	1.42	0.17		0.16	0.005
31632B	30.88 - 31.67	0.79	0.17		0.08	0.003

#### COMMENTS

The surface greenstones appear to belong to the Anarchist Group of rocks of Palaeozoic age. Intruding the greenstones, at a shallow depth, is the Cenozoic Coryell syenite with some feldspar porphyry dike offshoots.



No vein structure was seen. The occurrence of the pyrrhotite mineralization between the feldspar porphyry dikes and the close proximity to the syenite suggests that the mineralization may be of the contact type. Due to the absence of any definite vein structure and only the information from one drill hole, it is not possible to determine with any accuracy the trend or dip of the mineralization. However, the northerly trending location of the old shafts (pits) and trenches suggest that someone believed that the mineralization may strike in that general direction.

The mineralization intersected in the drill hole is not economic under present conditions nor was any grade close to the 1.0% Cu., 0.45 ozs. Au. and 1.00 ozs. Ag. reported from one of the trenches.

Location of D.D. HolePT. EHOLT CLAIM  
Greenwood M.D.Record No. 1810 (10)  
British Columbia

Hole No.	- 80-1	Length of Hole	- 44.09 metres
Core Size	- AEK	Vertical Length	- 31.17 "
Bearing of Hole	- West	Horizontal Length	- 31.17 "
Dip of Hole	- -45°	Date Started	- 26 May 1980
Elevation of Hole	- 1113 metres	Date Finished	- 30 June 1980

<u>From</u> (Metres)	<u>To</u> (Metres)	<u>Description</u>
0.0	- 5.31	Trachyte - light grey in color - disseminated pyrite
5.31	- 6.91	Augite porphyry with well defined augite crystals
6.91	- 8.83	Trachyte - light grey in color
8.83	- 11.61	Feldspar porphyry - several chlorite slips 70° to core. Fractures in vicinity of 10 metres 45° to core. Chilled contact with following section:
11.61	- 12.85	Heavy massive pyrrhotite with disseminated chalcopyrite. Bluish tinted mineral from 11.8 metres - 12.4 metres may be bornite or possibly covelite. Chalcopyrite has buttery yellow color and may have gold associated with it. Fractures at 11.5 metres 30° to core.
12.85	- 13.61	Light grey trachyte with disseminated pyrite
13.61	- 14.47	Light grey trachyte - some pyrrhotite, chalcopyrite and pyrite but not as heavy as in following section:
14.47	- 15.18	Grey mineralized trachyte - heavy pyrrhotite with pyrite and some chalcopyrite
15.18	- 18.89	Similar to above but possibly not as strong pyrrhotite - some fractures 30° to core - disseminated chalcopyrite at 17.9 metres - speck of gold (?) at 18.2 metres - section appears to grade into following:
18.89	- 19.51	Light grey trachyte very weakly mineralized
19.51	- 23.90	Sharp contact with light grey feldspar porphyry - similar to section 8.83 - 11.61 metres.

(8)

<u>From</u> (Metres)		<u>To</u> (Metres)	<u>Description</u>
23.90	-	24.99	Light grey fine grained trachytic rock - core crumpled at 24.9 metres - possible weak fault - some gouge
24.99	-	29.56	Similar to above but coarser textured - breccia from 25.1 - 25.4 metres - weak pyrite with minor chalcopyrite - 0.15 metres quartz vein at 28.6 metres 30° to core
29.56	-	31.69	Coarse grey-green trachyte - weak pyrite and chalcopyrite Chilled contact at 31.6 metres 70° to core
31.69	-	32.30	Coarse grained chilled section with increasing phenocrysts of feldspar as following section is approached - feldspar phenocrysts have a yellowish altered color
32.30	-	44.09	Pinkish colored syenite

END OF HOLE

% CORE RECOVERY

Length of core recovered - 40.07 metres

$$\% \text{ Recovery} = \frac{40.07 \times 100\%}{44.09} = 90.8\%$$

EXPENSES

<u>Cheque No.</u>	<u>Date</u>	<u>Particulars</u>	<u>Amount</u>
8010 8016	23 May/80 ) 5 June/80)	Cash expenses	\$ 1700.00
8011 8013	23 May/80 ) 26 May/80)	Supplies - chain saw, pump, hose, oil etc.	883.86
8014 8024	30 May/80 ) 30 June/80)	Motel expenses for drillers	619.12
8018 8019	7 June/80 ) 14 June/80 ) )	Iron craft: Welding water tanks. Drilling safety devices	504.44
8015 8017 8021 8023 8025	30 May/80 ) 6 June/80 ) 25 June/80 ) 30 June/80 ) 2 July/80 )	Drillers' wages: A. R. Topp L. Selclon D. Cashman	<u>6780.00</u>
			<u>\$ 10487.42</u>

Apply \$4200 on PT. EHOLT CLAIM (5 years)

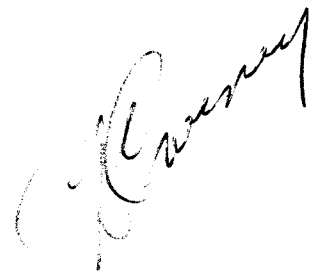
Put \$6287.42 in P.A.C. Account



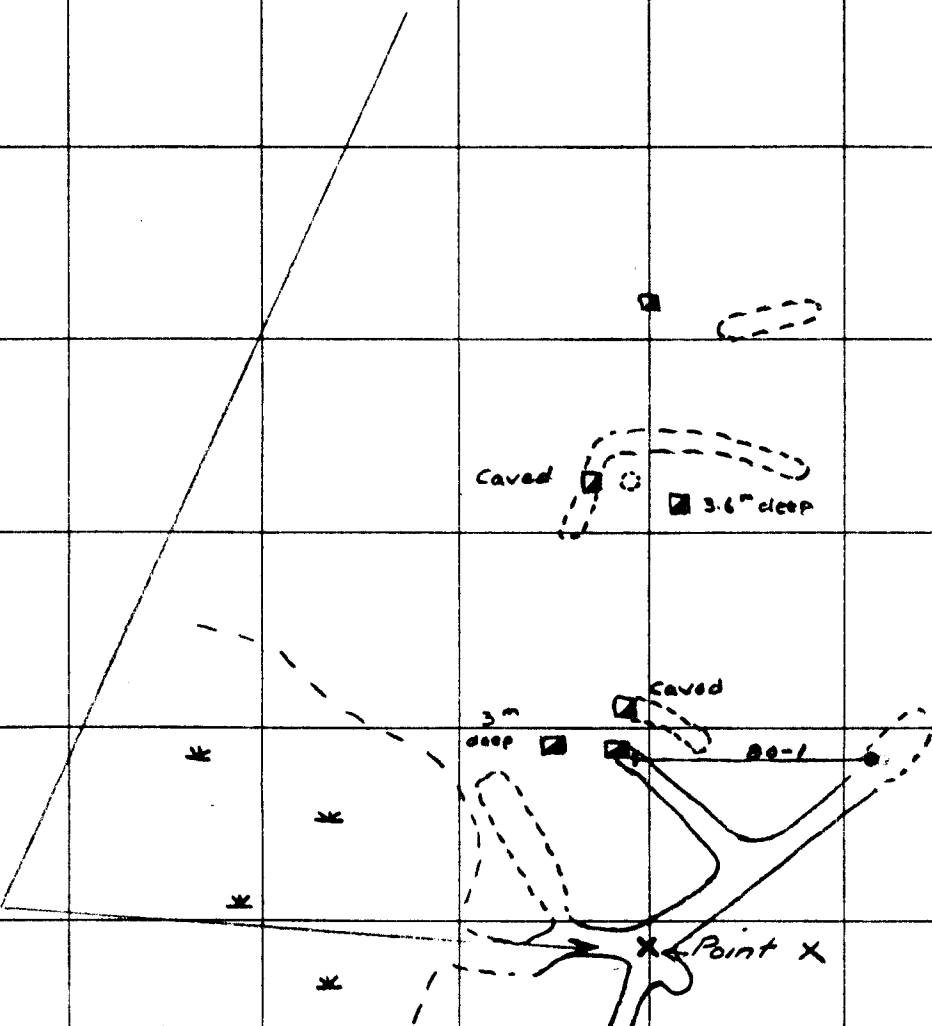
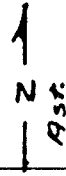
C. J. Coveney, P. Eng.  
Consulting Geologist.

QUALIFICATIONS

I, G. J. COVENKY, am a Registered Professional Engineer in British Columbia. I graduated from the University of New Brunswick in 1939 with a Bachelor of Science degree in geology. My graduate studies were done at the University of Toronto and in 1941 I received a Master's degree in geology. Since 1967 I have been practicing my profession as a consulting geologist. My experience spans over 30 years on property examinations and evaluations in most parts of Canada, various parts of United States, Mexico and Thailand. I do not hold nor do I expect to hold any interests in Gecker Energy Holdings Ltd.

A handwritten signature in cursive script, appearing to read "G. J. Covenky", is located in the lower right quadrant of the page.

□ L.C.P  
 (Corner post is outside map area)  
 Post is located 183m west and  
 152m north of Point X



*Handwritten signature or initials.*

To Highway No 3  
 approximately 25km

NOTE:  
 NW unit of PT EHOLT claim

LEGEND

- D.D.Hole
- ▨ Road
- ▧ Trench
- Shaft
- ▩ Swamp

MINERAL... BRANCH  
 ...  
 ...

**8812**

GEOKOR ENERGY HOLDINGS LTD  
 PT EHOLT CLAIM  
 GREENWOOD M.D B.C.  
 1:1000  
 10 0 10 20 30 m  
 8<sup>th</sup> Oct 1980 Figure - 13

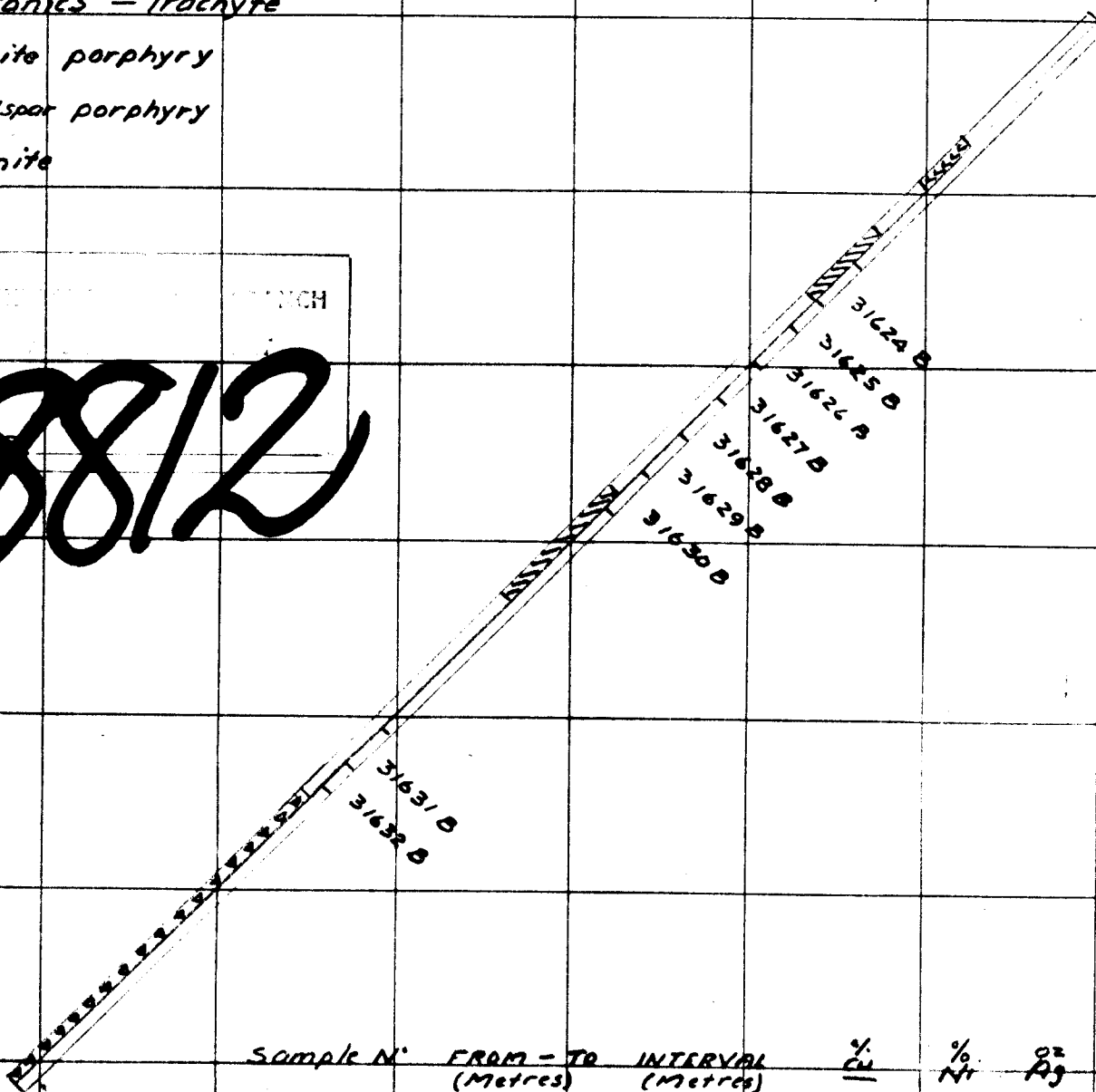
**LEGEND**

- Volcanics - Trochyte
- Augite porphyry
- Feldspar porphyry
- Syenite

D.H 80-1

E1 1113"

8812



Sample N°	FROM - TO (Metres)	INTERVAL (Metres)	% Cu	% Ni	oz Ag	oz Au
31624 B	10.05 - 11.50	1.45	0.03		0.01	< 0.003
31625 B	11.50 - 12.54	1.04	0.25	< 0.01	0.04	0.005
31626 B	12.54 - 14.12	1.58	0.10		0.02	0.003
31627 B	14.12 - 15.64	1.52	0.27	< 0.01	0.08	0.005
31628 B	15.64 - 17.16	1.52	0.31	< 0.01	0.06	0.012
31629 B	17.16 - 18.69	1.53	0.31	< 0.01	0.08	0.010
31630 B	18.69 - 20.21	1.52	0.17		0.10	0.005
31631 B	29.46 - 30.88	1.42	0.17		0.16	0.005
31632 B	30.88 - 31.67	0.79	0.17		0.08	0.003

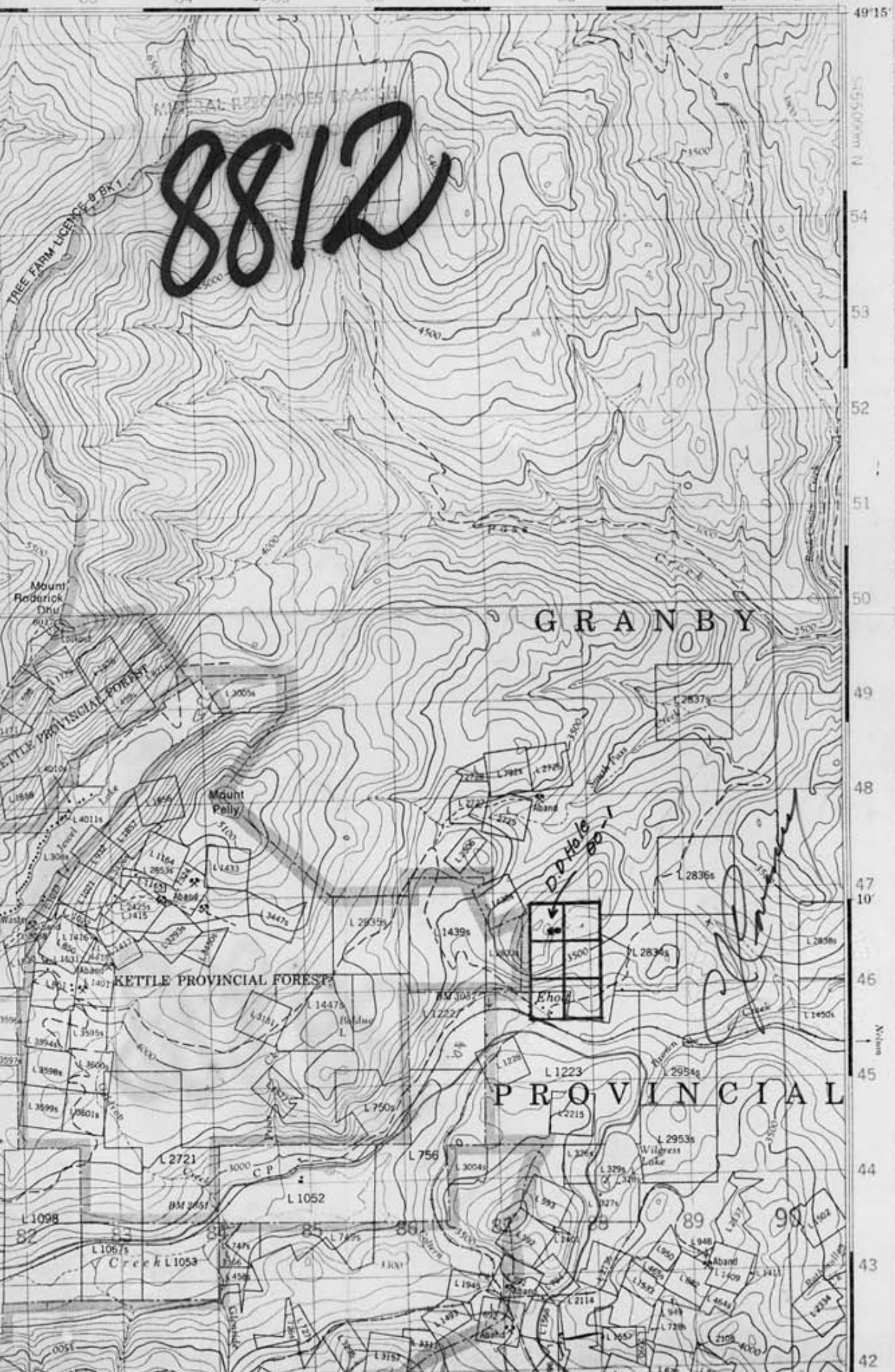
**GEOKOR ENERGY HOLDINGS LTD**  
 PT EHOLT CLAIM  
 GREENWOOD M.D. B.C.  
 1:200  
  
 8 Oct. 1980

Figure - A

83 84 35'85 86 87 88 89 190000m E 118'30"

49'15"  
54  
53  
52  
51  
50  
49  
48  
47 10'  
46  
45  
44  
43  
42

8812





1000 0 1000 2000 3000 4000 metres

35'

Figure 2 118°30'

49°15'

GREENWOOD  
M.O. B.C.  
B2E/2

# 8817



REFER  
 Crown  
 Reven  
 Forfei  
 Verifi  
 Legal  
 Legal

1C

Unless  
 based on  
 information  
 concerned

Figure-2