

181-# 14-# 8855

GEOCHEMICAL REPORT
OLIVER RESOURCES LTD.

Truly 2 claim, Queen Charlotte Islands, B. C.

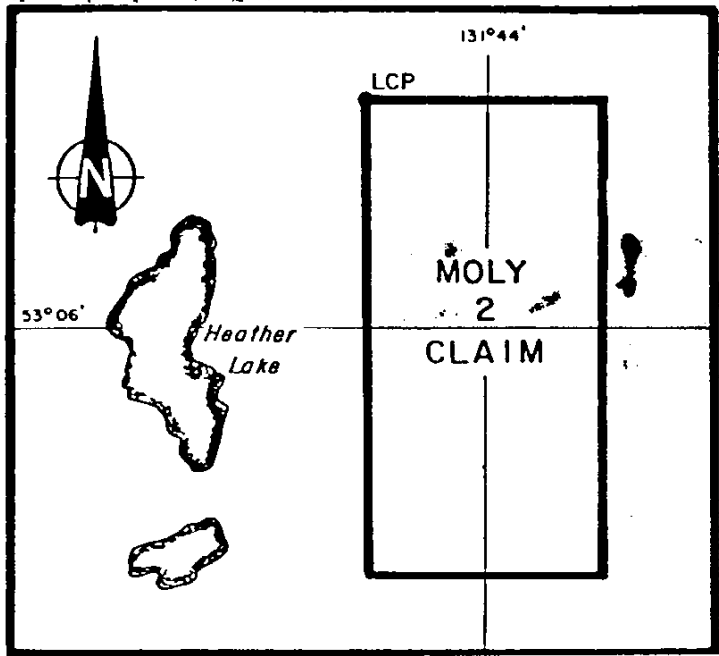
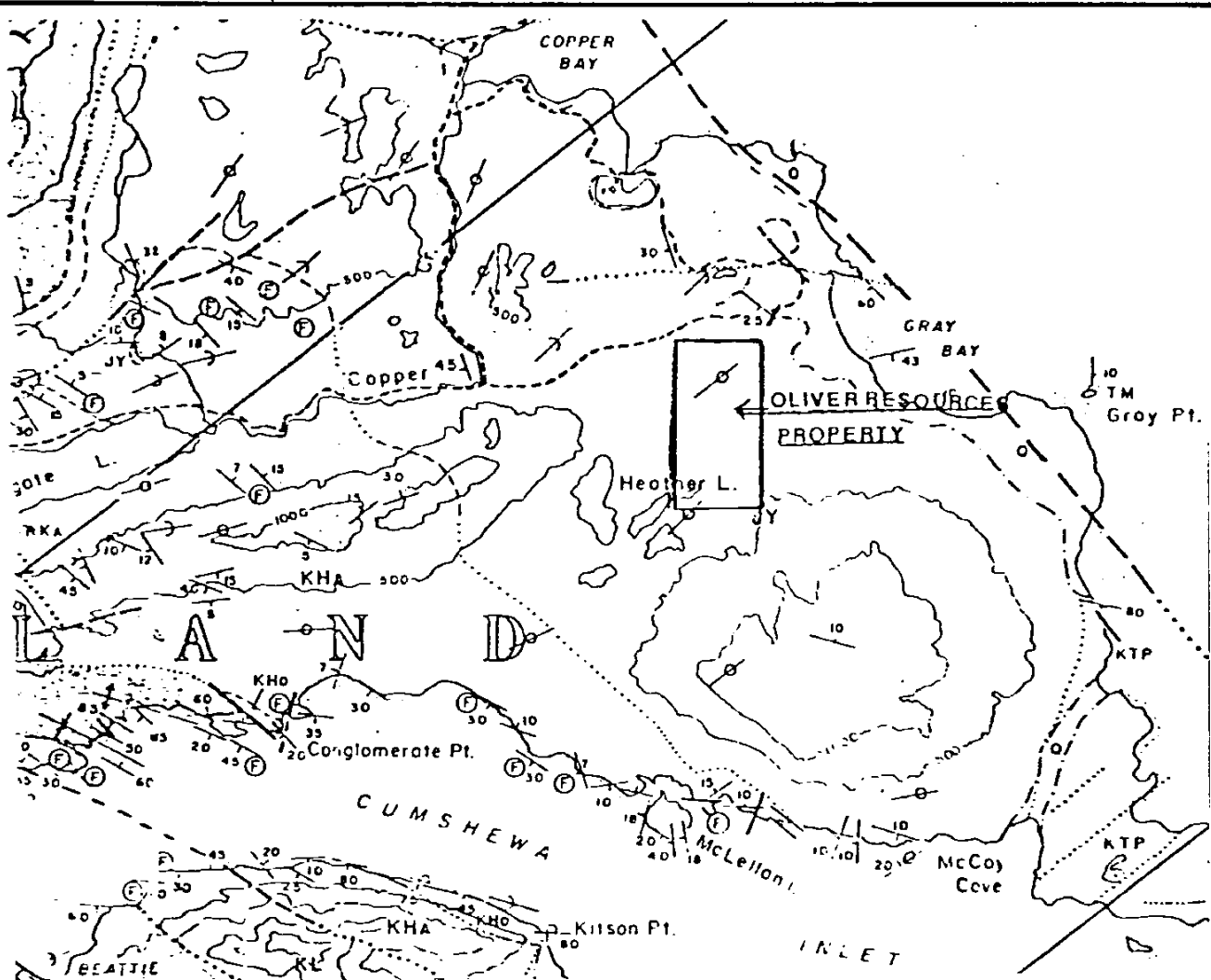
Lat. $55^{\circ}05'N$ Long. $131^{\circ}44'W$ NTS 103 G/4

AUTHOR: Glen E. White, B.Sc. P. Eng.

DATE OF WORK: June 11 - 23, 1980

DATE OF REPORT: August 14, 1980

8855



OLIVER RESOURCES LTD.
MOLY 2 CLAIM
 LOCATION AND CLAIMS MAP
 SKEENA MINING DIVISION - BC.

Glen C. White
 geophysical consulting
 services Ltd.

NTS 103-G-4 E

C O N T E N T S

	<u>PAGE</u>
Introduction.....	1
Property.....	1
Location and Access.....	1
General Geology.....	1 - 2
Survey Grid.....	2
Geochemical Survey.....	2
Discussion of Results.....	2 - 3
Conclusions and Recommendations.....	3
Statement of Qualifications.....	4
Cost Breakdown.....	5

ILLUSTRATIONS

Figure 1 - Claims and Location Map

Figure 2 - Geochemical Map - Copper

Figure 3 - Geochemical Map - Mercury

INTRODUCTION

During the period June 11 - 23, 1980, a program of linecutting and soil sampling was conducted over the Moly 2 claim as directed by Glen E. White Geophysical Consulting & Services Ltd.

The purpose of the survey was to try and locate any anomalous copper or mercury geochemical responses that might assist in detecting any auriferous sulphide mineralization.

PROPERTY

The property consists of the Moly 2 claim, record # 1116, comprised of 18 units. The record date is February 27

LOCATION AND ACCESS

The Moly 2 claim is located on Moresby Island in the Queen Charlotte Islands, southsoutheast of Sandspit. Latitude $55^{\circ}05'N$, Longitude $131^{\circ}44'W$, N.T.S. 103 G/4.

A logging road from Sandspit comes close to the northeast corner of the claim. However, facile access is by helicopter from Sandspit.

GENERAL GEOLOGY

A description of the property is given by A. J. Roberts P. Eng., in his report to Oliver Resources dated March 27, 1979. He mentions that the underlying geology can be expected to consist of tufts, felsite, agglomerates, quartz-carbonate, dykes of porphyritic andesite and rhyolites as described in Bulletin 54, Geology of the Queen Charlotte Islands, B. C. by A. Sutherland Brown, 1978.

The property has low topographic relief and is covered with swamp, a dense mixture of windfall, evergreens and shalal.

SURVEY GRID

The survey grid consisted of some 50 km of linecutting. Thirty-one lines were established in an east-west direction from a north-south baseline. The lines were numbered at 50 m intervals along the lines.

GEOCHEMICAL SURVEY

Soil samples of the "B" horizon were obtained along the survey grid and sent to Chemex Labs Ltd. for analysis. The samples were dried, weighted and analysed by hot extraction techniques for copper and mercury. 961 samples were obtained.

DISCUSSION OF RESULTS

The elements copper and mercury were used as trace elements to try and detect any auriferous sulphide mineralization. The results are illustrated on Figures 2 and 3 respectively. The copper results vary between 1 and 48 p.p.m. The copper values are uncountoured as no definitely anomalous trends were detected.


The mercury geochemistry gave results between 10 and 970 p.p.b. The 970 value appears as a spot high. The northern portion of the survey grid has a blotchy area that varies between 150 and 530 p.p.b. Mercury is present in low concentrations in the volcanic flows and tufts on the Queen Charlotte Islands. Thus, with the large amount of organic matter present, mercury-organic precipitates are

readily formed which can give false anomalies. Past experience with gold-bearing sulphide mineralization indicates that the mercury values should be increased some 10 fold to be of definite interest.

CONCLUSION AND RECOMMENDATIONS

A program of linecutting and geochemical soil sampling was completed over the Moly. 2 claim, Moresby Island, B. C. The soil samples were analysed for copper and mercury to try and detect any auriferous sulphide mineralization. The mercury data showed a blotchy, weakly anomalous area which may possibly be caused by concentrations in the organic material. The copper results showed no anomalies. Thus, it is recommended that further work on this property be held in abeyance subject to any adjacent mineral discoveries.

Respectfully submitted,
 GLEN E. WHITE GEOPHYSICAL
 CONSULTING & SERVICES LTD.

A circular professional seal for Glen E. White, a Professional Engineer in the Province of British Columbia. The seal contains the text: 'PROFESSIONAL ENGINEER OF THE PROVINCE OF BRITISH COLUMBIA' around the perimeter and 'GLEN E. WHITE' in the center. A signature is written across the seal.

Glen E. White, B.Sc., P. Eng.
 Consulting Geophysicist

STATEMENT OF QUALIFICATIONS

NAME: WHITE, Glen E., P. Eng.

PROFESSION: Geophysicist

EDUCATION: B.Sc. Geophysics - Geology
University of British Columbia

PROFESSIONAL ASSOCIATIONS: Registered Professional Engineer,
Province of British Columbia

Associate member of Society of Exploration Geophysicists.

Past President of B. C. Society of Mining Geophysicists.

EXPERIENCE: Pre-Graduate experience in Geology - Geochemistry - Geophysics with Anaconda American Brass.

Two years Mining Geophysicist with Sulmac Exploration Ltd. and Airborne Geophysics with Spartan Air Services Ltd.

One year Mining Geophysicist and Technical Sales Manager in the Pacific north-west for W. P. McGill and Associates.

Two years Mining Geophysicist and supervisor Airborne and Ground Geophysical Divisions with Geo-X Surveys Ltd.

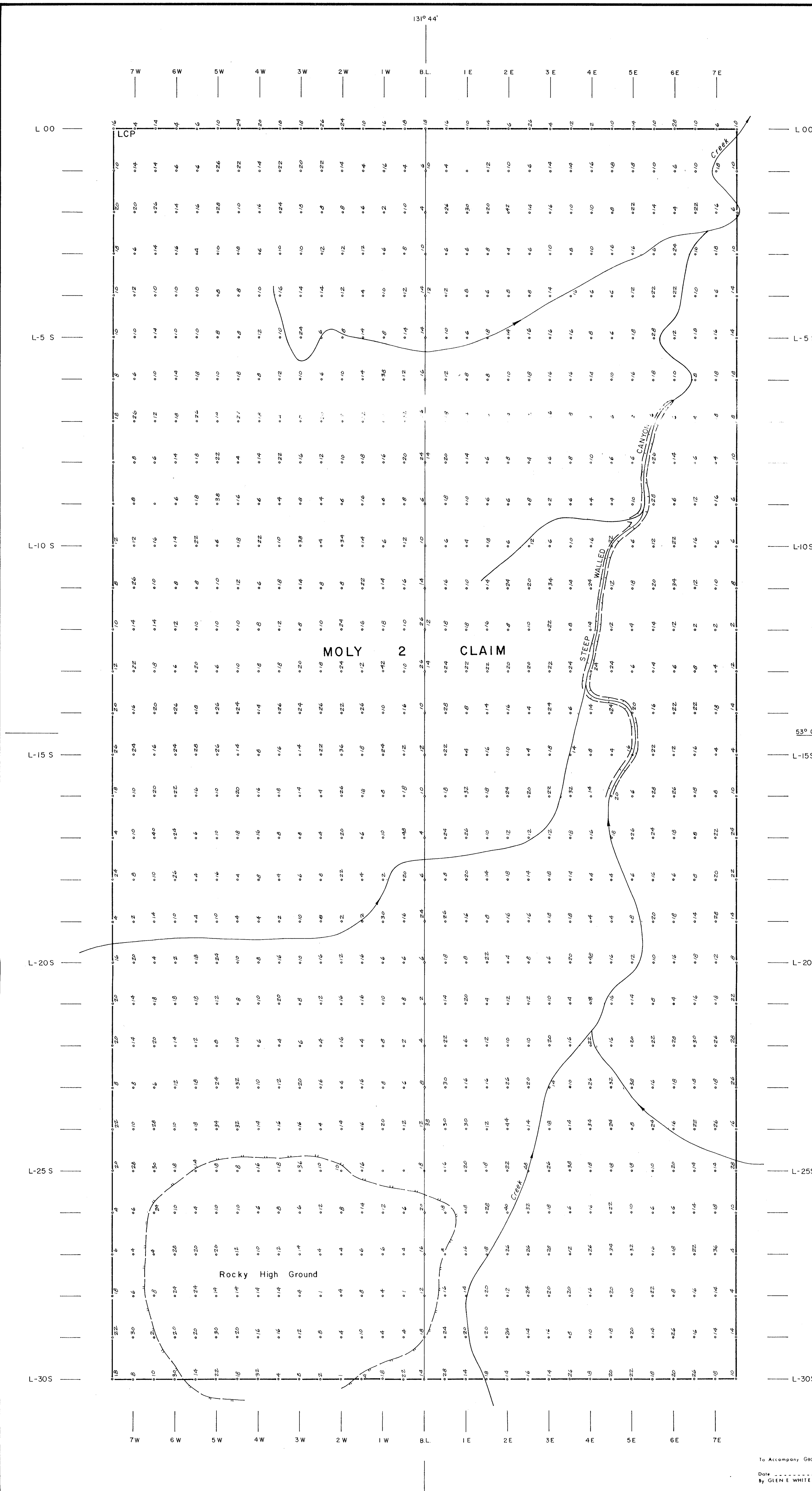
Two years Chief Geophysicist Tri-Con Exploration Surveys Ltd.

Nine years Consulting Geophysicist.

Active experience in all Geologic provinces of Canada.

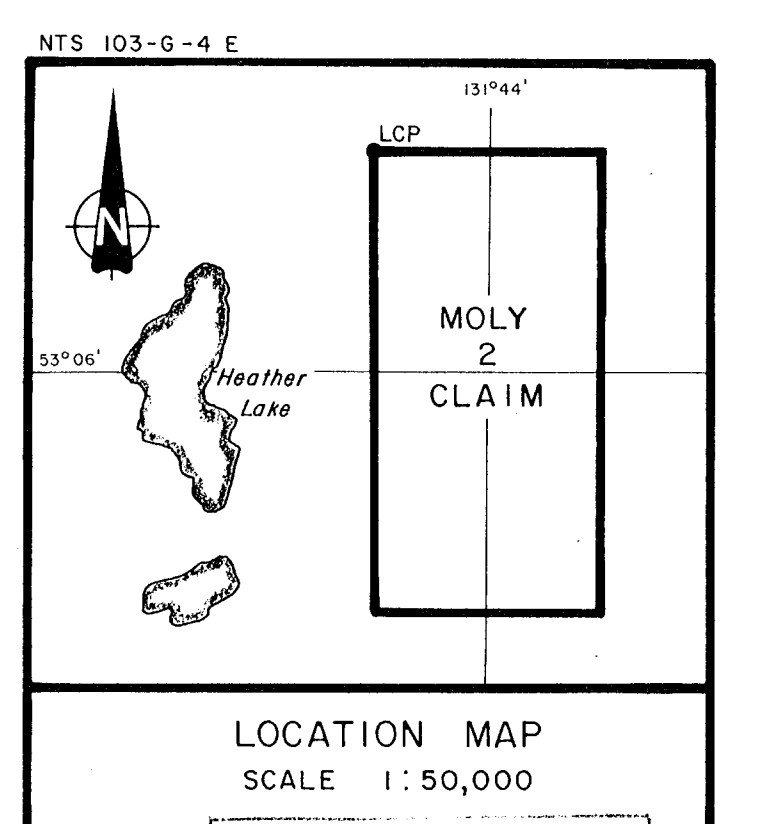
COST BREAKDOWN

<u>Personnel</u>	<u>Date</u>	<u>Wages</u>	<u>Total</u>
K. Jones.....	June 11-23/80.....	\$175/day.....	\$2275.00
C. Beach.....	"....."	175/day.....	2275.00
P. Wright.....	"....."	145/day.....	1885.00
M. Kerner.....	"....."	145/day.....	1885.00
Materials - \$3/km.....			150.00
Meals and accomodations @ \$35/day/man.....			1820.00
Airfares and airfreight.....			825.00
Helicopter charges.....			1320.00
Geochemical Analysis.....			5423.15
Interpretation and report.....			550.00
			<hr/>
		Total.....	\$16,523.15

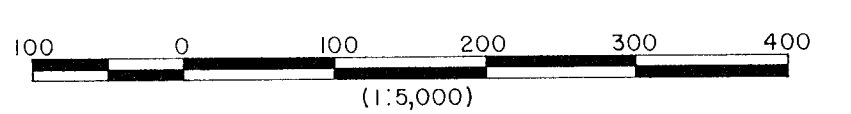


LEGEND:

- Creek
- Canyon
- Topographic high
- Grid station
- Claim line



8855



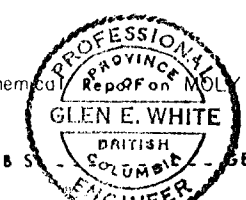
OLIVER RESOURCES LTD.
MOLY 2 CLAIM
 SKEENA MINING DIVISION-BC.

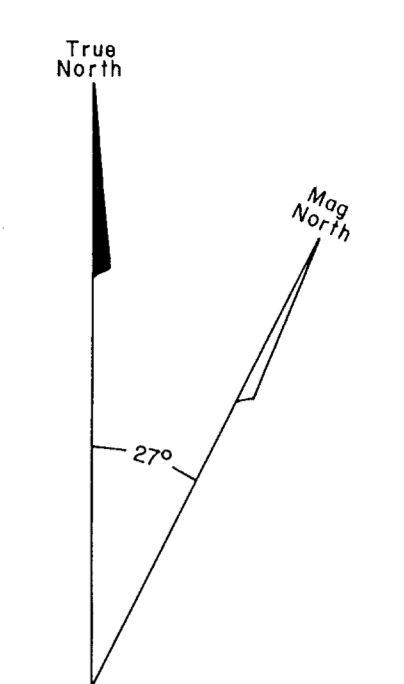
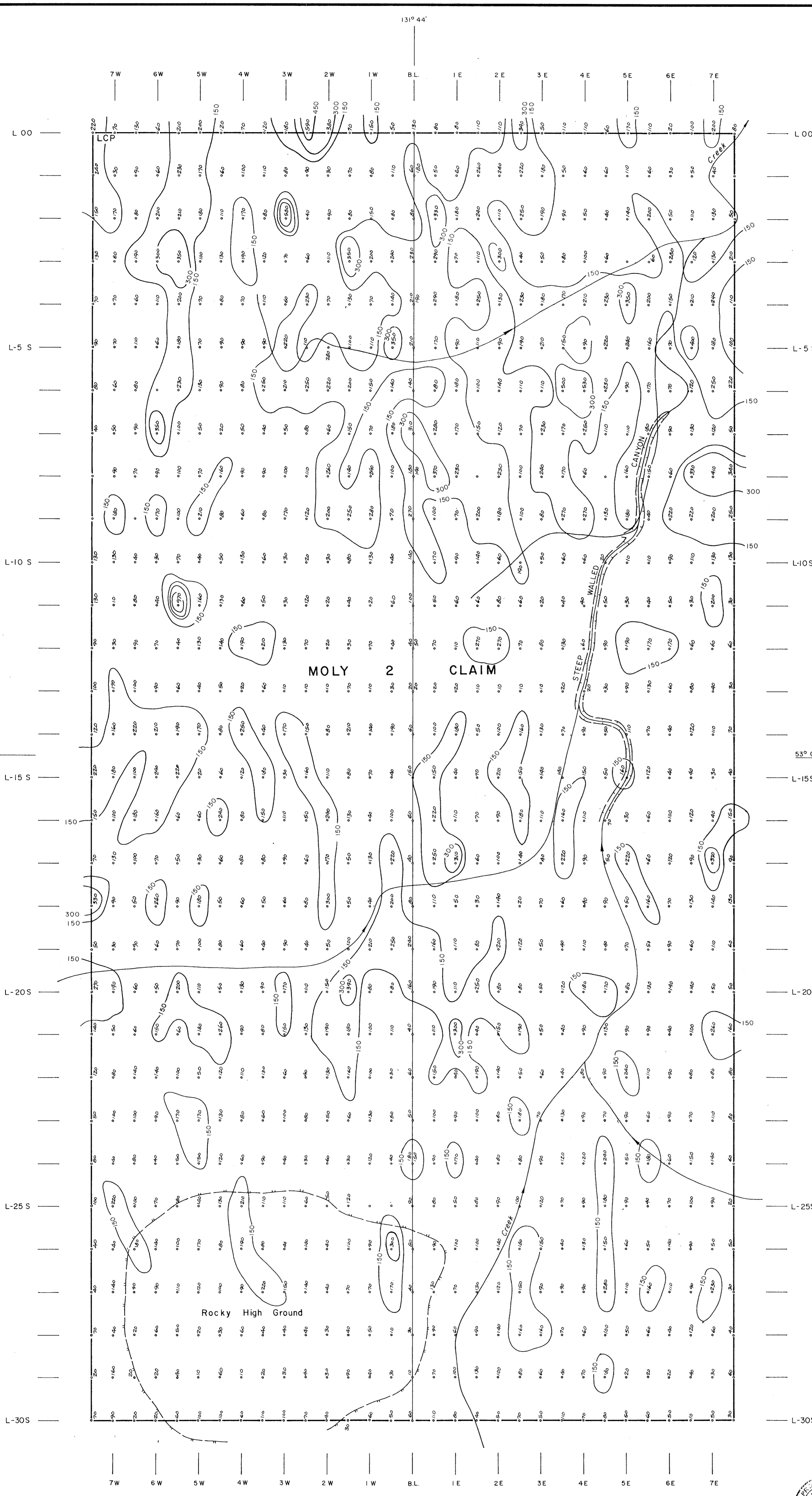
GEOCHEMICAL MAP
COPPER IN PPM

Glen E. White
 geophysical consulting
 services ltd.

INTERPRETED BY: G.E.W.
DRAWN BY: F.W.F.
CHECKED BY:
DATE: JULY 16, 1980
FIG. No.: 2

To Accompany Geochemical Map of Moly 2 Claim
 Date: _____
 By: GLEN E. WHITE - B.Sc. (HON.)
 PHYSICIST

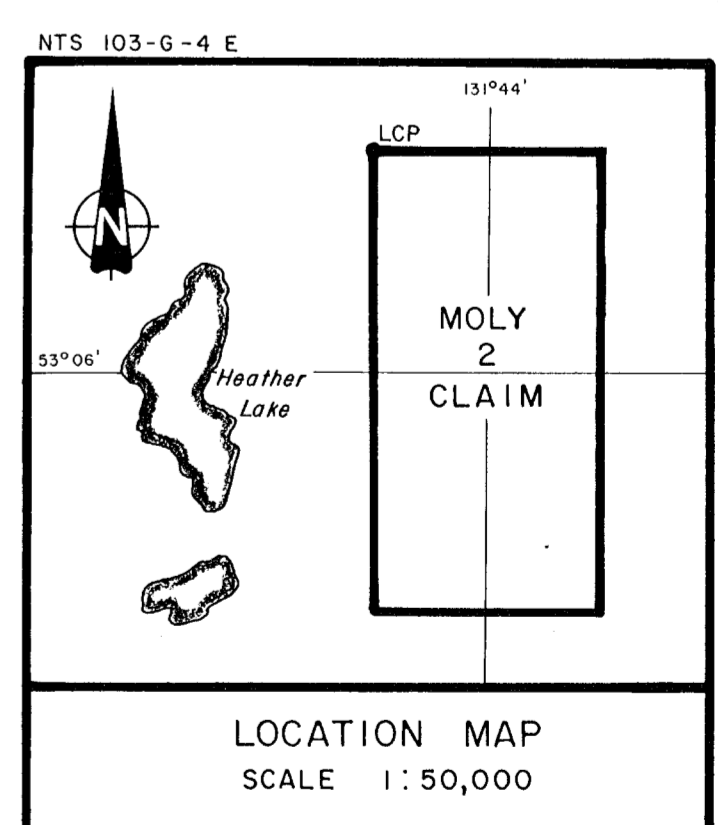
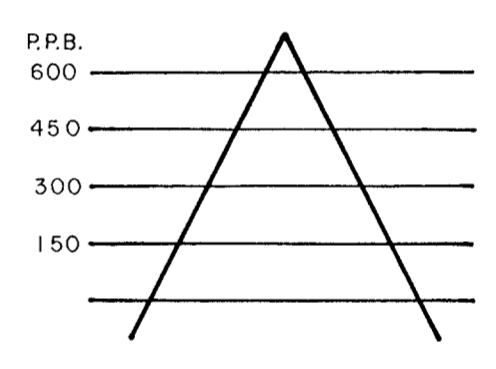




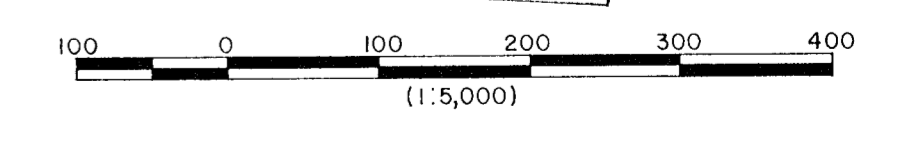
LEGEND:

- Creek
- Canyon
- Topographic high
- Grid station
- Claim line

MERCURY KEY



8855



OLIVER RESOURCES LTD.
MOLY 2 CLAIM
 SKEENA MINING DIVISION - BC.

GEOCHEMICAL MAP
MERCURY IN P.P.B.

Glen E. White
 geophysical consulting
 resources ltd.

INTERPRETED BY: G.E.W.
DRAWN BY: F.W.F.
CHECKED BY:
DATE: AUGUST 4, 1980
FIG. No.: 3

To Accompany Report on Moly 2 Claim
 Date: _____
 By: GLEN E. WHITE, GEOPHYSICIST