

ASSESSMENT REPORT

TYPE:	DIAMOND DRILLING
CLAIMS:	NORMA, MINT FR. C.G.s Lots 1302, 1342
MINING DIVISION:	KAMLOOPS
NTS LOCATION:	92I/9W
LATITUDE:	50° 40'
LONGITUDE:	120° 27'
OWNER:	COMET INDUSTRIES LTD.
OPERATOR:	CRAIGMONT MINES LIMITED
AUTHOR:	N.B. VOLLO, P.Eng
DATE:	FEB. 19th, 1981

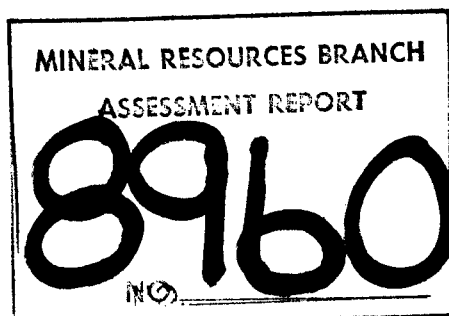


TABLE OF CONTENTS

Location and Access	1
Claims	1
History and Previous work	1
Geology	1
Drill Program	1
Core Storage	1
Qualifications	1
Statement of Expenditures	2
Location Map	3
Drill Plan	4
Drill Log	5

### LOCATION AND ACCESS

The property is located around Iron Mask Lake, within the boundaries of the City of Kamloops. It is accessible via the Trans Canada Hwy, which crosses it.

### CLAIMS

The property consists of 25 Crown Grants, one Mineral Lease, M.L. 21 and 122 recorded claims, centered by the Norma and Mint Fr. C.G.s, Lots 1302 and 1342.

### HISTORY AND PREVIOUS WORK

Copper mineralization was discovered on the property in the late 1800's, and the Iron Mask Mine produced 180,000 tons grading 1.5% Cu between 1904 and 1928. The Big Onion zone on the Norma and Mint Fr. C.G.s was discovered by Comet Industries Ltd. in 1972. Subsequently approximately 14,000 m of diamond drilling and 23,000 m of percussion drilling was done by Comet, Getty Mines Limited and Canadian Superior Exploration to the end of 1977.

### GEOLOGY

The property is within the Iron Mask Batholith, an alkalic intrusive complex coeval with the enclosing Nicola volcanic rocks and unconformably overlain by Kamloops Group sediments and volcanics. Mineralization occurs along northwest trending fault and shear zones and is essentially chalcopyrite, with minor bornite, and significant associated gold, silver and molybdenum.

### DRILL PROGRAM

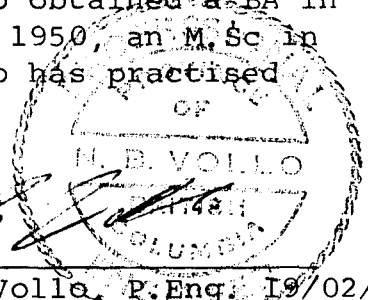
The property was optioned by Craigmont Mines Limited in 1981 and a diamond drilling program started to evaluate the Big Onion and other zones as potential open pit mines. One hole, totalling 150 m has been completed to date.

### CORE STORAGE

Core is stored in a large building on site.

### QUALIFICATIONS

Core was logged by the writer, who obtained a BA in Geology from the University of Saskatchewan in 1950, an M.Sc in Geology from McGill University in 1959 and who has practised his profession for 30 years.



N.B. Vollo, P. Eng. 19/02/81

STATEMENT OF EXPENDITURES

150 metres BQ diamond Drilling at \$49.50/m ----\$7,425

CONTRACTOR

H. Allen Diamond Drilling Ltd.  
Box 1397,  
MERRITT, B.C. VOK 2B0



**CRAIGMONT MINES LIMITED**  
**LOCATION MAP**  
**92I/9 IRON MASK**  
**1:100,000 Feb. 81 N.V.**

Ro 14  
47815

Victor  
L 1340

Mro 13 fr  
124505

OR I.  
724

CANADA HIGHWAY 2350 2344

TRANS

Wagon Rd.

BOWERS LAKE  
EL 232

Kamloops

Savona

Nighthawk  
L 1747

x2345

Norma  
L 1302

x2444

Champion I  
L 5622

DDH C-81-35

RUIN

Champion  
L 5

Earns  
cliffe  
fr.  
1301

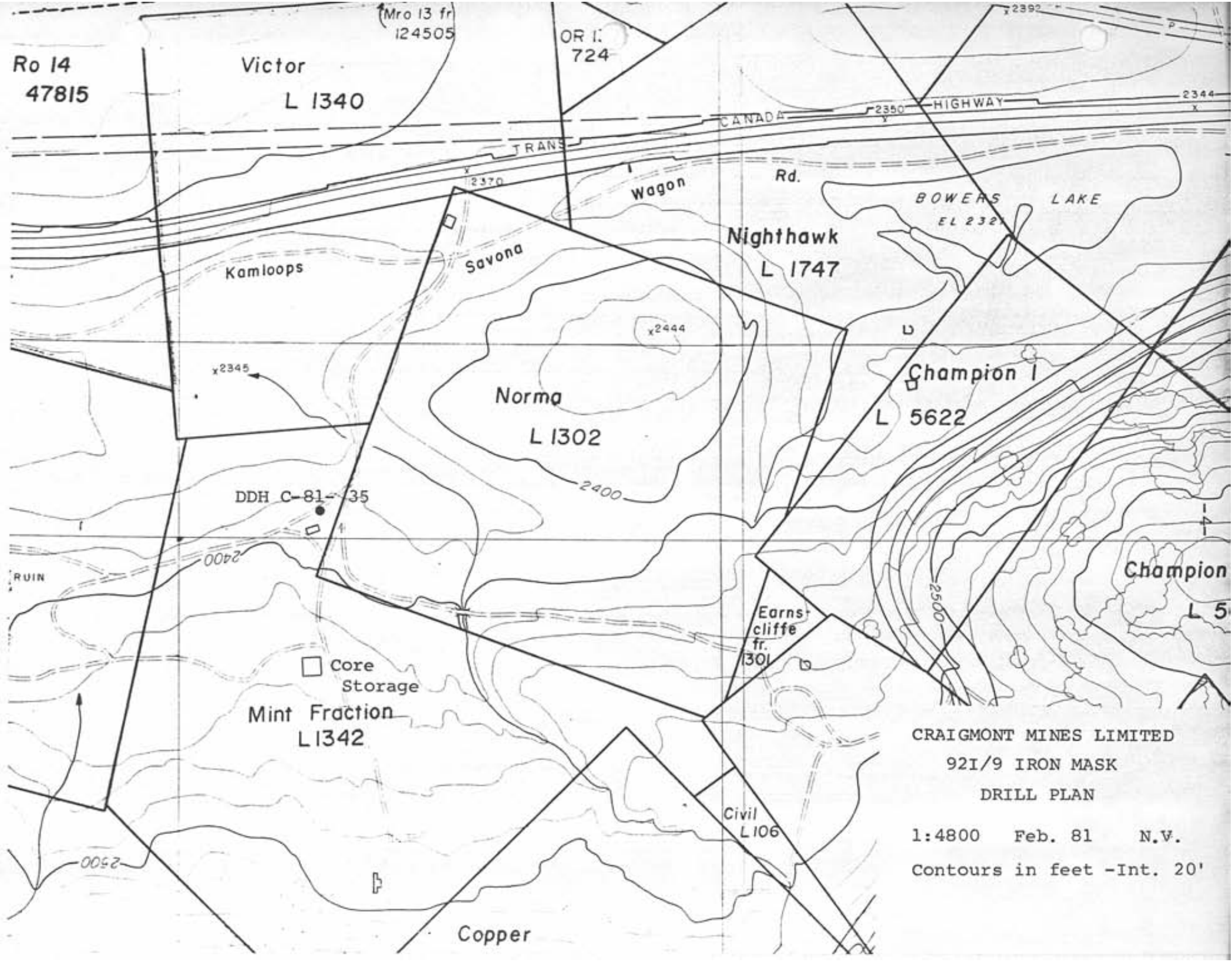
Core Storage  
Mint Fraction  
L1342

Civil  
L106

CRAIGMONT MINES LIMITED  
921/9 IRON MASK  
DRILL PLAN

1:4800 Feb. 81 N.V.  
Contours in feet -Int. 20'

Copper







# DIAMOND DRILL CORE LOG -- SAMPLE RECORD

 PROPERTY 921/9 CS

 HOLE No. C 81-35

 SHEET No. 2 of 4

DEPTH	DESCRIPTION	MINERALIZATION	SAMPLE	FROM	TO	m	Cu %	Mo %	Au ppm	Ag ppm
38.0	Monzonite - Pinkish gray, medium grained, with strong, streaky K-Sper alt.	1/2-1% diss Cp	2705	40	45	5				
47.4	- last core	Spsd P <sub>2</sub> Cp	2706	45	50	5				
48.0	As before, somewhat darker - remaining and K alt - 70-80° CA.	" " "	07	50	55	5				
	Sharp, muddy change to	1/2-1% P <sub>2</sub> Cp	08	55	60	5				
63.0	becomes light pinkish, bleached	1/2-1% P <sub>2</sub> Cp	09	60	65	5				
65.0	becomes light gray, intensely bleached, with mud seams 45,									
69.0	Gypsum zone - 80-90% white to gray gypsum veins, with patchy remnants of bleached Monzonite	Spsd P <sub>2</sub>	2710	65	70	5				
	74.4 - mud - fault	Spsd P <sub>2</sub>	11	70	75	5				
75.0	Monzonite - light gray, medium grained, med fractured, with numerous mud seams	Fine diss P <sub>2</sub> Cp	12	75	80	5				
		" " "	13	80	85	5				
		" " "	14	85	89	4				
89.0	- dora section	15-20% Cp <sub>2</sub>	15	89	90	1				
90.0	- gray, strongly brecciated, numerous mud seams		16	90	95	5				
			2717	95	100	5				



# DIAMOND DRILL CORE LOG -- SAMPLE RECORD

 PROPERTY 9219 CS

 HOLE No. CEI-35

 SHEET No. 3 of 4

DEPTH	DESCRIPTION	MINERALIZATION	SAMPLE	FROM	TO	m	Cu %	Mo %	Au ppm	Ag ppm
	50° Contact to									
100.9	Diorite - light grey, medium grained, very felsic.	1/2-1% f. m. sp	2718	100	105	5				
102.0	Monzonite - light grey, bleached, with numerous fractures - a few Qtz veins - broken core to									
105.5	Diorite - Dark grey to black, mostly, QA intrusive breccia with patches of fracture breccia. 10-15% Qtz feldspar and zircon veining - numerous mud seams, mostly at low angles -	1/2-1% f. m. sp " " "	19 20	105 110	110 115	5 5				
	117.0 - Same, but with inclusions of picrite muddy gouge and breccia to	1% f. m. sp	21	115	120	5				
	117.0 - Same, but with inclusions of picrite muddy gouge and breccia to	1% sp 1% sp	22 23	120 125	125 130	5 5				
127.6	Picrite - Dark grey to black - strongly fractured, with 15-20% muddy breccia - remarkably good core - most gouge		24	130	135	5				

