

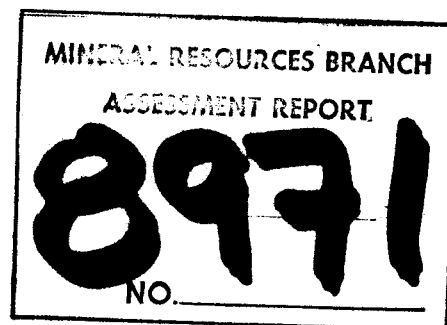
COMINCO LTD.

EXPLORATION

NTS: 82F/4W

WESTERN DISTRICT

25 March 1981



PERCUSSION DRILLING - 1980

GEORGIA MINERAL CLAIM

ROSSLAND AREA, TRAIL CREEK M.D., B.C.

LATITUDE: 49⁰06'N LONGITUDE: 117⁰47'W

WORK PERFORMED

MAY 14 - JUNE 4, 1980

R.F. NICHOLS

TABLE OF CONTENTS

STATEMENT OF QUALIFICATION

COST STATEMENT

DRILL DATA

INDEX MAP 1:50,000

PERCUSSION DRILL HOLE MAP 1" = 200'

* * * * *

COMINCO LTD.

EXPLORATION

NTS: 82F/4W

WESTERN DISTRICT

25 March 1981

STATEMENT OF QUALIFICATIONS

I, Ronald F. Nichols, Geologist, with business address at 409 Granville Street, Vancouver, British Columbia, do hereby certify that I have participated in and supervised the percussion drilling programme and the logging of the drill chips, and have assessed and interpreted the data resulting from said program on the Georgia claim.

I also certify that:

1. I am a graduate of the University of British Columbia with a B.Sc degree in Geology 1967.
2. I am a member in good standing of the Association of Professional Engineers of the Province of British Columbia.

Signed: *R.F. Nichols*

R.F. Nichols, B.Sc.
P.Eng.

Vancouver, British Columbia

COMINCO LTD.

EXPLORATION

NTS: 82F/4W

WESTERN DISTRICT

25 March 1981

STATEMENT OF EXPENDITURES
FOR PERCUSSION DRILLING ON THE
GEORGIA MINERAL CLAIM

PERCUSSION DRILLING

2,350 feet of percussion drilling was performed by Al Millar Percussion Drilling Ltd., of Kamloops between May 14 and June 4, 1980. The contract cost per foot was \$5.75. Assessment credits claimed are (2,350 feet) x (\$5.75/foot) = \$13,512.50.

PERCUSSION DRILL RESULTS

ON GEORGIA CLAIM

TABLE I

| DRILL HOLE | INTERVAL | ASSAYS (Hole Average) | | | |
|------------|-----------|--------------------------|-----------|-----------|-----------|
| | | Au oz/ton | Au ppb | Ag ppm | Cu ppm |
| GP-80-8 | 5'-190' | (.004) | 151 | <0.4 | 120 |
| | 190'-250' | (.076) | 1606 | <0.4 | 121 |
| GP-80-8A | 5'- 20' | (.007) | 236 | <0.4 | 213 |
| GP-80-9 | 0'-250' | (.006) | 201 | <0.4 | 169 |
| GP-80-9A | 5'- 20' | | 180 | <0.4 | 125 |
| GP-80-10 | 20'-260' | (.009) | 312 | <0.4 | 122 |
| GP-80-11 | 7'-250' | (.001) | 31 | <0.4 | 60 |
| GP-80-12 | 7'-200' | (.002) | 82 | <0.4 | 77 |
| GP-80-12A | 5'- 30' | | 28 | <0.4 | 187 |
| GP-80-13 | 7'-270' | | 54 | <0.4 | 68 |
| GP-80-14 | 0'-120' | | <10 | <0.4 | 53 |
| GP-80-15 | 7'-250' | (.002) | 84 | <0.4 | 73 |
| GP-80-16 | 7'-120' | (.001) | 36 | <0.4 | 70 |
| GP-80-17 | 8'- 80' | (.005) | 164 | <0.4 | 109 |
| GP-80-17A | 10'-100' | (.005) | 181 | <0.4 | 131 |
| GP-80-18 | 7'-130' | | <10 | <0.4 | 59 |

NOTE: TABLE I only shows bedrock intervals in each percussion hole. Total footage drilled on the Georgia claim is calculated from collar (o) to bottom of each hole.

Percussion Drill pulps are stored in Cominco's Vancouver Warehouse.

All percussion holes are located by a chain and compass survey.

Report by: R. F. Nichols
R.F. Nichols
Geologist III

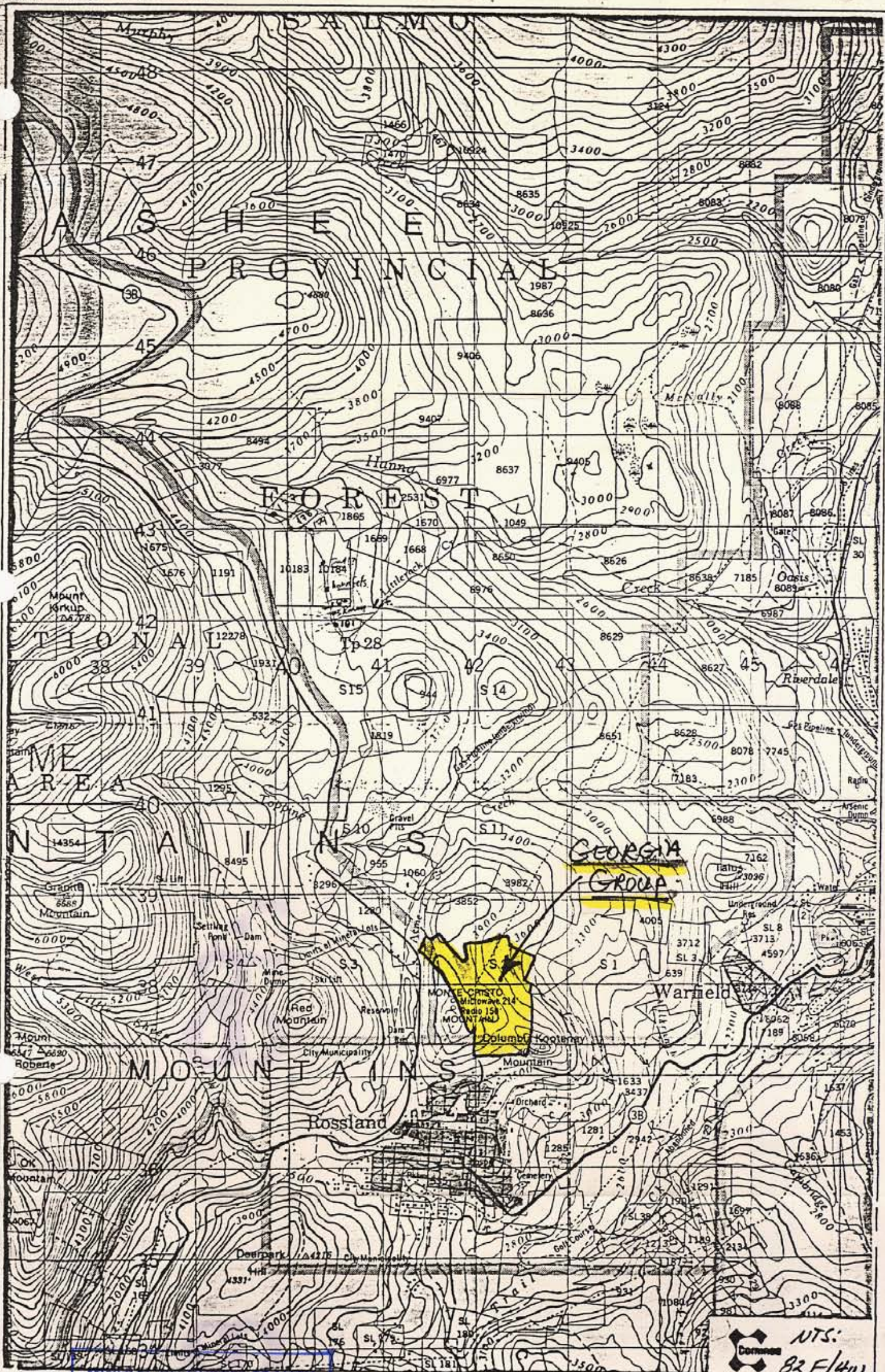
Endorsed by: D. W. Keadle for W. J. Wolfe
W.J. Wolfe
Assistant Manager

Approved for
Release by: G. Harden
G. Harden
Manager, Western District
Exploration

RFN/skg

Distribution

Minister of Mines (2)
W.D. File (1)



NTS:
Common 82 F/40

Drawn by: MINERAL RESOURCES BRANCH
Traced by:

Revised by: ASSESSMENT REPORT
Date: Revised by: Date:

89771

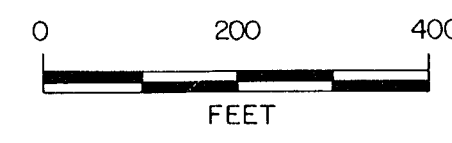
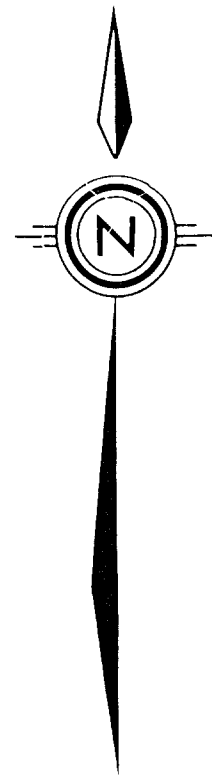
GEORGIA GROUP
LOCATION MAP

Ron Nichols

Scale: 1:50,000

Date: February, 1980

Plate:



▲ Percussion drill sites

MINERAL RESOURCE BRANCH
ASSESSMENT REPORT
8971
Spencer

| | | | |
|------------------|------|-----------------|------|
| Drawn by: RFN | | Traced by: SAW | |
| Revised by | Date | Revised by | Date |
| | | | |
| | | | |
| | | | |
| Scale: 1" = 200' | | Date: JUNE 1980 | |
| Plate: | | Plate: | |

GEORGIA OPTION

PERCUSSION DRILL HOLE LOCATIONS