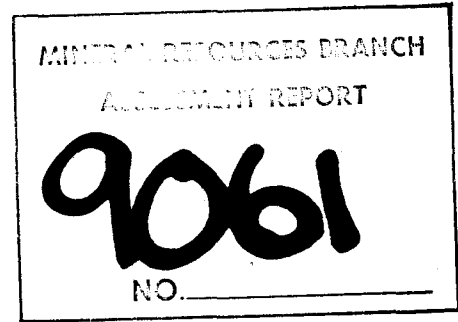


GEOCHEMICAL  
GEOPHYSICAL REPORT  
ON THE  
MINERVA CLAIM GROUP



Claims: MIN. 20 Units (2589(5))  
MINERVA, 15 units (2590(5))  
DUM, 16 Units (277<sup>5</sup>~~3~~(7))

KAMLOOPS MINING DIVISION

NTS: 92 P/8W

Latitude and Longitude : 51° 27' N - 120° 19' W

Owner: Teck Corporation  
1199 West Hastings Street  
Vancouver, B.C.  
V6E 2K5

Operator: Teck Explorations Limited  
1199 West Hastings Street  
Vancouver, B.C.  
V6E 2K5.

By: Peter G. Folk, P.Eng.

TABLE OF CONTENTS

	<u>PAGE</u>	
INTRODUCTION	1	
Property	2	
REGIONAL GEOLOGY	2	
PROPERTY GEOLOGY	2	
GEOCHEMISTRY	3	
Results	4	
MAGNETOMETER SURVEY	5	
SUMMARY AND CONCLUSIONS	5	
RECOMMENDATIONS	6	
ITEMIZED COST STATEMENT	7	
CERTIFICATE OF QUALIFICATIONS	8	
APPENDIX	9	
MAPS AND FIGURES		
Figure 1	Location	After Page 1
Figure 2	Claims	After Page 1
Figure 3	Soil Geochemistry Cu, Ag, PPM	Enclosed
Figure 9	Magnetics	Enclosed

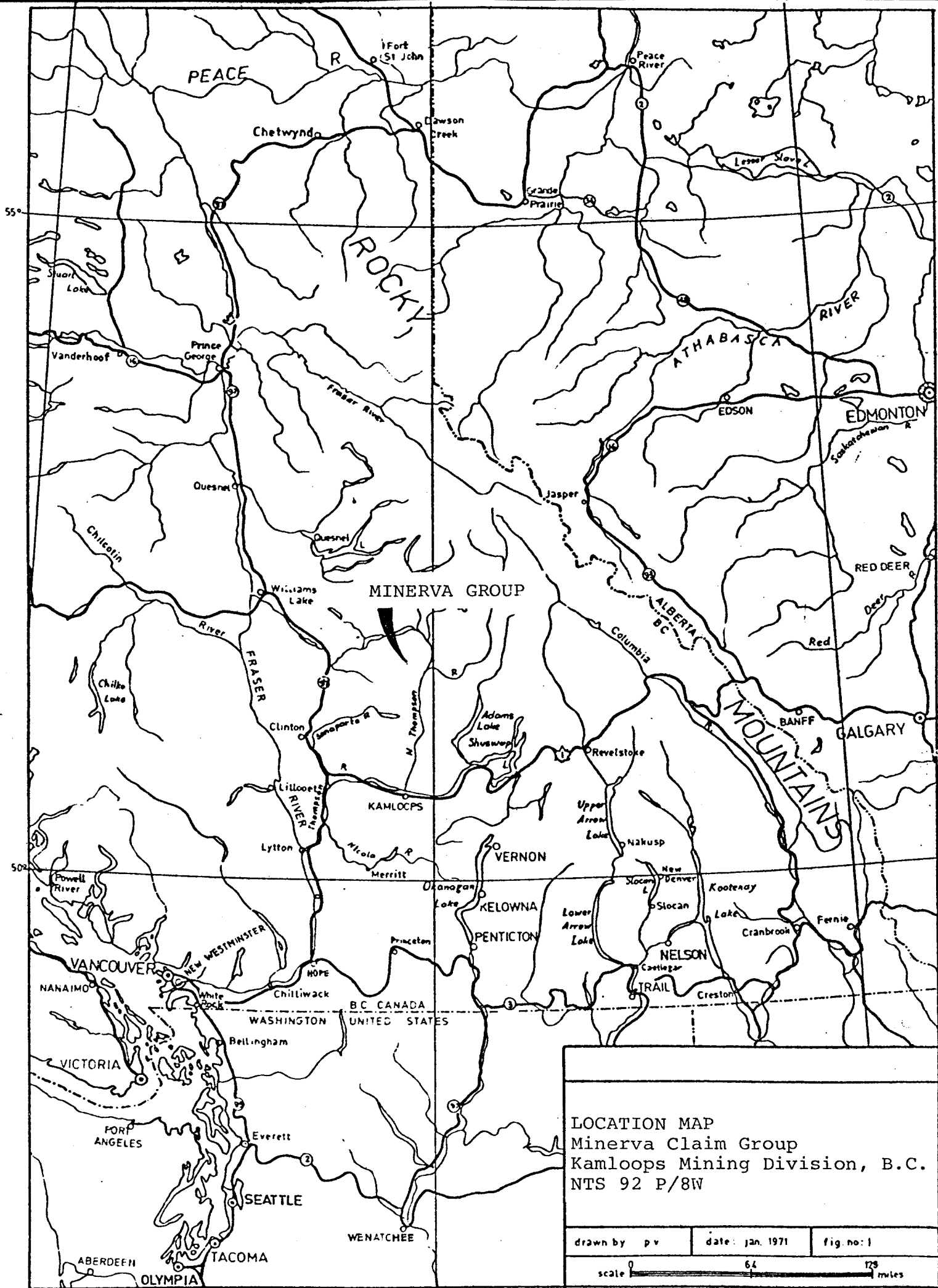
MINERVA CLAIMS  
GEOCHEMICAL AND GEOLOGICAL REPORT

INTRODUCTION

Located about 10km due east of Little Fort, a small village about 85km north of Kamloops on Highway No. 5, the MINERVA property of three claims comprising 51 units can easily be reached by logging road. Elevations are in the 1250m range with moderate topographic relief. The bush is fairly thick with mature pine, poplar and thick alder. Bears, moose and beaver are present. Parts of the claims were logged six to 10 years ago.

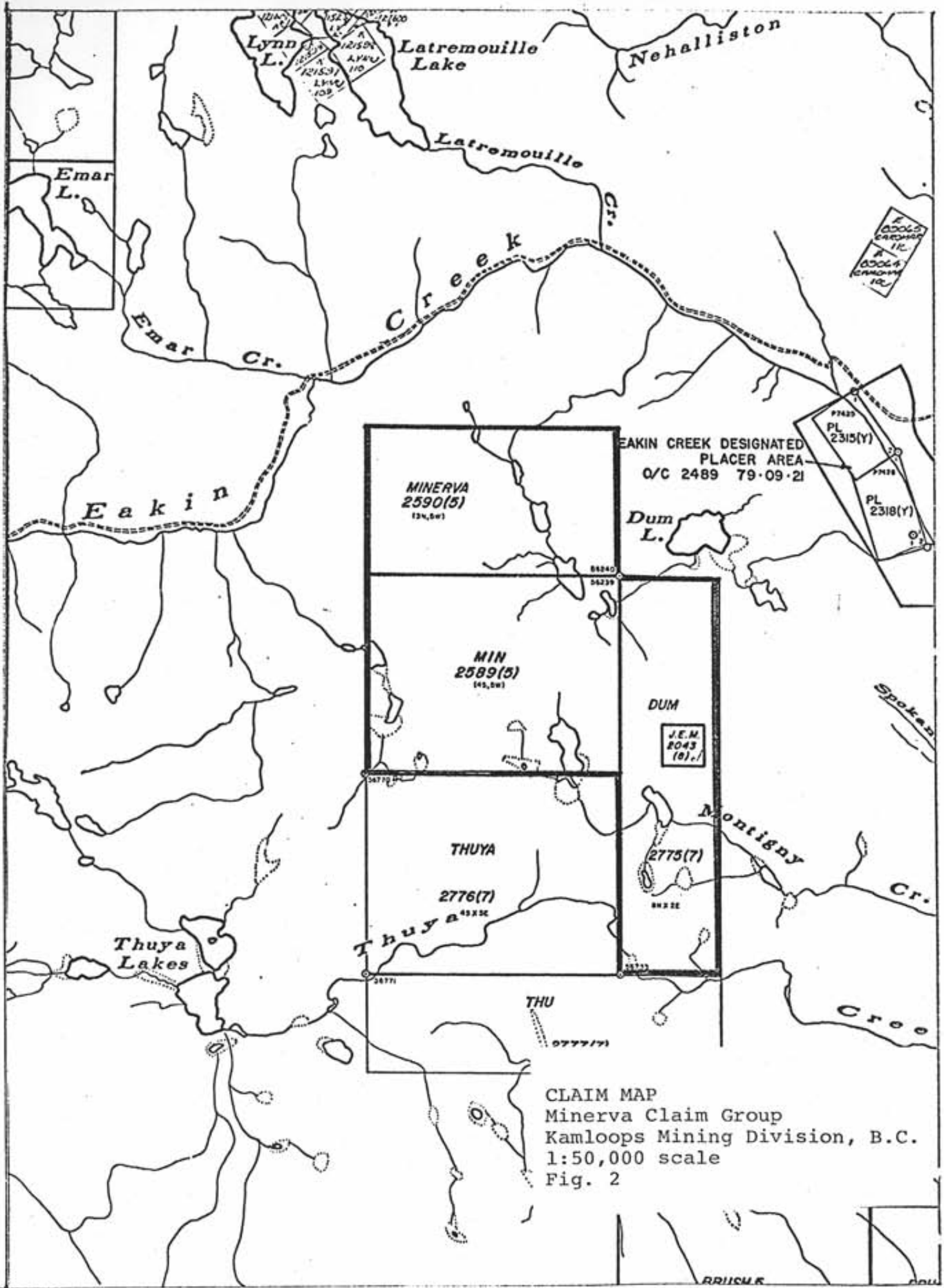
The purpose of the present program was to determine the cause of anomalies in lake sediments sampled last year by TECK EXPLORATIONS LIMITED. NORANDA had claims in the area in 1969 and RIO TINTO held part of the ground in 1972 but the results of any work these companies may have done is unknown.

Present work consists of about 60km of flagged grid with soil geochemistry, reconnaissance geological mapping and magnetics. The property is owned by TECK CORPORATION and operated by TECK EXPLORATIONS LIMITED.



LOCATION MAP  
 Minerva Claim Group  
 Kamloops Mining Division, B.C.  
 NTS 92 P/8W

drawn by p v	date: jan. 1971	fig. no: 1
scale 0 ————— 64 ————— 125 miles		



EAKIN CREEK DESIGNATED  
PLACER AREA  
Q/C 2489 79-09-21

**MINERVA**  
2590(5)  
134,541

**MIN**  
2589(5)  
145,541

**THUYA**  
2776(7)  
43352

**DUM**  
J.E.M.  
2043  
(8), 1

**2775(7)**  
43352

CLAIM MAP  
Minerva Claim Group  
Kamloops Mining Division, B.C.  
1:50,000 scale  
Fig. 2

Property

The property consists of the following contiguous claims:

Min.	20 units	2589 (5)
Minerva,	15 units	2590 (5)
Dum.	16 units	277 <del>8</del> <sup>5</sup> (7)

*JK.*

The Min., Minerva and Dum claims are to be grouped in the MINERVA GROUP (51 units).

REGIONAL GEOLOGY

The property is located on the Triassic or Jurassic Thuya Batholith just west of the Triassic Nicola Volcanics.

PROPERTY GEOLOGY

Most of the property is covered by coarse glacial debris. The Nicola Volcanics do not outcrop on the property, but a substantial tongue of ultramafic material passes north-westerly through the east end of the claims. The relationship between the ultramafic material and the granodiorite of the Thuya granodiorite is unknown. Granodiorite underlies most of the property and is a fairly homogeneous,

medium-grained, massive hornblende-biotite granodiorite with chloritic and epidote alteration in small amounts. Some pegmatitic material was located west of the base line near the south end of the property. The ultramafic material is hornblendite, hornblende diorite and peridotite.

Thin quartz selvages along joint planes are a common but widely dispersed feature throughout. Pyrite, chalcopyrite and galena can be found in trace amounts in some of these selvages. Close to the ultramafic contact the frequency and size of the quartz selvages increase to where a stringer 5cm to 25cm wide can be expected every 6m or so. The best concentration is at 6 west on lines 15 N and 14 N where the stringers are about 1.5m apart. Stringers strike N-S, dip to the west and contain very small amounts of pyrite, chalcopyrite and galena. There appears to be an increase in biotite content at the expense of hornblende in the quartz zone. Mineralization seen is of little economic significance, but is probably of sufficient tenor to have caused the original lake sediment anomalies.

#### GEOCHEMISTRY

1349 samples were taken at 50m intervals on grid lines 100m and 200m apart. The samples were put in kraft paper

envelopes and sent to ACME ANALYTICAL LABS for Cu, Mo, Ag analysis by standard atomic absorption techniques. Details of the assay techniques are in the appendix.

Soils on the property are very poorly developed with many swamps and boulder trains. The sampling technique consisted of using a grub hoe to dig through the organic layer to sample whatever fine material could be found.

### Results

Analytical results are tabulated in the appendix.

Molybdenum values, which are uniformly low, are considered to be of little significance and are not plotted. Copper and silver results are plotted on figure three. 1 PPM and 0.5 PPM silver have been visually estimated to be strongly and weakly anomalous respectively and are contoured on figure three. The copper results are not contoured since they are in a general sense coincidental with silver, but are more erratic and not of a tenor to suggest that widespread Cu mineralization is present.

The highest values are Cu - 1100 PPM, Ag 9.5 PPM at 12N, 17W. Chalcopyrite and galena have been recognized in this area in trace amounts. Many of the Cu Ag anomalies are located adjacent to the magnetic highs which are produced by ultramafic bodies.



### MAGNETOMETER SURVEY

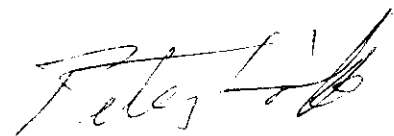
Most of the lines were traversed with a SCINTREX MF-2 vertical field magnetometer with readings at 25m intervals. The results were corrected for diurnal variations and are plotted and contoured on figure four. The 3000 gamma contour is considered to represent the approximate surface expression of the ultramafic body. A large body of this ultramafic material is indicated in the southeast quadrant of the grid and a smaller dyke is postulated NNE from this along a line of small lakes. A few erratic high values probably indicate thin dykes of similar material. A linear band of low magnetic readings in the core of the main magnetic high could represent a major fault structure passing through the property in a NNW direction.

### SUMMARY AND CONCLUSIONS

Copper-silver anomalies are found at the contacts of an ultramafic intrusion and associated dykes. Sub-economic chalcopyrite-galena mineralization in thin quartz veinlets was found in some of these areas, but other areas need further prospecting. Some effort should be made to determine the gold potential in the anomalous zones since the geological environment would suggest that gold might be present. The anomaly south of DUM LAKE contains the most widespread incidence of high copper-silver values and, in addition, is located near the ultramafic contact. This area warrants further examination.

RECOMMENDATIONS

1. Examine anomalous zones, particularly south of  
DUM LAKE.
2. Analyze some of the anomalous soils for gold.
3. Further prospecting.



Peter G. Folk, P.Eng.

ITEMIZED COST STATEMENT

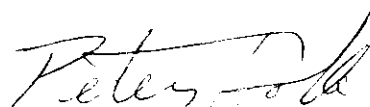
G. LOVANG, Party Chief Oct. 25 - Nov. 4, Nov. 17 - Nov. 20, 1980 14 days @ \$111.94/day	\$ 1,568
P. FOLK, P.Eng. May 20 - 24, 5 days @ \$200/day	1,000
R. SCHNEIDER, Prospector Oct. 24 - Oct. 30, 7 days @ \$30/day	630
P. HOLBEK, B.Sc. May 20 - 24, 5 days @ \$81/day	405
P. SMITH, Student May 20 - 24, 5 days @ \$65/day	325
J. BACON, Prospector May 20 - 24, 5 days @ \$55/day	275
M. KAY, Helper May 20 - 24, 5 days @ \$55/day	275
K. LEHMAN, Helper Oct. 24 - 30, 7 days @ \$80/day	560
F. PELKEY Oct. 24 - Nov. 8, 16 days @ \$50/day	800
Vehicle Rental, Redhawk Rentals 37 truck days @ \$20/day	740
Living Expenses \$12 per man per day, 69 man days	828
Geochemical analyses 1349 soil samples @ \$2.75	3,709
Report Preparation, drafting	1,000
	<hr/>
	\$12,115
	<hr/>

## CERTIFICATE OF QUALIFICATIONS

Peter G. Folk, P. ENG.

I hereby certify that:

1. I graduated from the University of British Columbia in 1971 with a B.A.S.C. degree in geological engineering.
2. I am a member in good standing of the Association of Professional Engineers of the Province of British Columbia.
3. I have worked since graduation as an exploration geologist and mine geologist in Canada and the United States.
4. The work described herein was done under my direct supervision.

A handwritten signature in cursive script, reading "Peter G. Folk".

APPENDIX

GEOCHEMICAL RESULTS AND ASSAY TECHNIQUES



ACME ANALYTICAL LABORATORIES LTD.

Assaying & Trace Analysis

852 E. Hastings St., Vancouver, B.C. V6A 1R6

Telephone : 253 - 3158

GEOCHEMICAL LABORATORY METHODOLOGY - 1981

SAMPLE PREPARATION

1. Soil samples are dried at 60°C and sieved to -80 mesh.
2. Rock samples are pulverized to -100 mesh.

Geochemical Analysis for Ag\*, Bi\*, Cd\*, Co, Cu, Fe, Mn, Mo, Ni, Pb, Sb\*, V, Zn

0.5 gram samples are digested hot dilute aqua regia in a boiling water bath and diluted to 10 ml with demineralized water.

All the above elements are determined in the acid solution by Atomic Absorption.

\* demotes background correction.

Geochemical Analysis for Au

10.0 gram samples that have been ignited overnight at 600°C are digested with hot dilute aqua regia, and the clear solution obtained is extracted with Methyl Isobutyl Ketone.

Au is determined in the MIBK extract by Atomic Absorption using background correction ( Detection Limit = 5 ppb direct AA and 1 ppb graphite AA. )

Geochemical Analysis for Au, Pd, Pt, Rh

10.0 - 30.0 gram samples are subjected to Fire assay preconcentration techniques to produce silver beads.

The silver beads are dissolved and Au, Pd, Pt, and Rh are determined in the solution by Atomic Absorption.

Geochemical Analysis for As

0.5 gram samples are digested with hot dilute aqua regia and diluted to 10 ml.

As is determined in the solution by Graphite Furnace Atomic Absorption.



ACME ANALYTICAL LABORATORIES LTD.

Assaying & Trace Analysis

852 E. Hastings St., Vancouver, B.C. V6A 1R6

Telephone : 253 - 3158

Geochemical Analysis of Hg

Digestion

A .50 gram sample is digested with aqua regia and diluted with 20% HCl.

Determination

Hg in the solution is determined by cold vapour AA using F & J Scientific Hg assembly. An aliquot is added to stannous chloride-hydrochloric acid solution. The reduced Hg is swept out of the solution and passed into the Hg cell where it is determined by AA.

Oxalic Acid Leach of Rock, Soil & Silt Samples

A .50 gram sample is digested hot with 10 mls 5% oxalic acid solution. The oxalic acid will dissolve Fe and Mn from their oxides of M - 1 fraction (but not from magnetite & ilmenite) limonites and clays. The following metals are analysed by atomic absorption : Cu, Zn, Pb, Ni, Mo, Fe & Mn.

Cold HCl Acid Extraction

A .50 gram sample is leached with 10 ml 5% HCl solution at room temperature for 2 hours with occasional shaking. Copper is dissolved from the organic and surface layers of clay fractions.

EDTA Extraction

A .50 gram sample is leached at room temperature for 4 hours with 10 mls of 2.5% EDTA solution.



To: Teck Mining Corp.,  
11 Floor - 1199 West Hastings St.,  
Vancouver, B.C.  
V6E 2K5

852 E. Hastings St., Vancouver, B. C. V6A 1R6

phone:253 - 3158

File No. 80-293

Type of Samples Soil

Disposition

### GEOCHEMICAL ASSAY CERTIFICATE

Project - Minerva

SAMPLE No.	Mo	Cu	Ag								
L5N 6+50 W	1	4	.1								1
7	1	6	.5								2
7+50	1	10	.6								3
8	1	2	.2								4
8+50	1	4	.2								5
9	1	10	.2								6
9+50	1	2	.1								7
10	1	8	.4								8
10+50	1	2	.1								9
11	1	2	.1								10
11+50	1	34	.1								11
12	1	2	.1								12
12+50	1	2	.1								13
13	1	2	.1								14
L5N 13+50 W	1	6	.1								15
											16
L7N 5+50W	1	2	.1								17
6	1	2	.1								18
6+50	1	2	.1								19
7	1	14	.3								20
7+50	1	8	.3								21
8	1	2	.2								22
8+50	1	2	.1								23
9+50	4	6	.1								24
10+50	1	4	.1								25
11	1	6	.1								26
12	1	4	.2								27
12+50	12	88	1.0								28
13	1	20	.6								29
13+50	1	2	.1								30
L7N 14 W	1	24	.2								31
											32
8+50N 5 W	1	12	.1								33
8+50N 5+50W	1	2	.1								34
											35
9N 5 W	1	4	.1								36
5+50	1	4	.1								37
6	1	8	.5								38
6+50	1	4	.1								39
9N 7 W	1	10	.1								40

All reports are the confidential property of clients  
All results are in PPM.  
DIGESTION:.....  
DETERMINATION:.....

DATE SAMPLES RECEIVED May 27, 1980  
DATE REPORTS MAILED June 2, 1980  
ASSAYER \_\_\_\_\_

DEAN TOYE, B.Sc.  
CHIEF CHEMIST  
CERTIFIED B.C. ASSAYER





To: Teck Mining Corp.,

ACME ANALYTICAL LABORATORIES LTD.

Assaying & Trace Analysis

852 E. Hastings St., Vancouver, B. C. V6A 1R6

phone:253 - 3158

File No. 80-293

Type of Samples Soil

Disposition

GEOCHEMICAL ASSAY CERTIFICATE

2

SAMPLE No.	Mo	Cu	Ag								
9N 7+50W	1	6	.1								1
8	1	2	.1								2
8+50	1	14	.7								3
9	1	14	.2								4
9+50	1	8	.2								5
10	1	6	.4								6
10+50	1	2	.1								7
11	1	8	.1								8
11+50	1	2	.1								9
12	1	4	.1								10
12+50	1	2	.2								11
13	1	10	.2								12
13+50	1	4	.3								13
14	1	2	.2								14
9N 14+50W	1	2	.1								15
											16
11N 4+50W	1	16	.2								17
5	1	10	.5								18
5+50	1	2	.1								19
6	1	4	.2								20
6+50	1	6	.1								21
7	1	10	.4								22
7+50	1	14	.2								23
8	1	12	.3								24
8+50	1	4	.1								25
9	1	4	.2								26
9+50	1	4	.1								27
10	1	2	.1								28
10+50	1	4	.1								29
11	1	4	.1								30
11+50	1	4	.2								31
12	1	12	.1								32
12+50	1	6	.3								33
13	1	6	.2								34
13+50	1	10	.4								35
14	1	2	.1								36
14+50	1	6	.2								37
11N 15+50W	20	132	3.1								38
											39
											40

All reports are the confidential property of clients  
All results are in PPM.

DIGESTION:.....

DETERMINATION:.....

DATE SAMPLES RECEIVED May 27, 1980

DATE REPORTS MAILED June 2, 1980

ASSAYER *[Signature]*

DEAN TOYE, B.Sc.  
CHIEF CHEMIST  
CERTIFIED B.C. ASSAYER



To: Teck Mining Corp.,

ACME ANALYTICAL LABORATORIES LTD.

Assaying & Trace Analysis

852 E. Hastings St., Vancouver, B. C. V6A 1R6

phone:253 - 3158

File No. 80-293

Type of Samples Soil

Disposition

GEOCHEMICAL ASSAY CERTIFICATE

SAMPLE No.	Mo	Cu	Ag								
11N 16 W	3	28	.2								1
16+50	1	6	.2								2
17	1	2	.1								3
17+50	1	12	.2								4
11N 18 W	1	6	.2								5
11+50N 4+50W	1	12	.4								6
12N 4+50W	1	8	.2								7
5	1	4	.1								8
5+50	1	2	.1								9
6	1	4	.2								10
6+50	1	2	.2								11
7	2	20	.4								12
7+50	1	2	.2								13
8	1	18	.2								14
8+50	1	2	.1								15
9	1	2	.1								16
9+50	1	4	.1								17
10	1	10	.2								18
10+50	1	6	.3								19
11	9	116	.4								20
11+50	1	10	.3								21
12	1	2	.1								22
12+50	1	14	.4								23
13	1	4	.2								24
13+50	1	6	.1								25
14	1	4	.1								26
12N 14+50W	1	16	.3								27
13N 4 W	1	24	.2								28
4+50	1	16	.1								29
5	1	12	.2								30
5+50	1	8	.5								31
6	1	2	.1								32
6+50	1	4	.2								33
7	1	6	.1								34
7+50	1	2	.1								35
8	1	10	.1								36
10	1	6	.1								37
13N 10+50W	1	2	.1								38
											39
											40

All reports are the confidential property of clients  
All results are in PPM.

DIGESTION:.....

DETERMINATION:.....

DATE SAMPLES RECEIVED May 27, 1980

DATE REPORTS MAILED June 2, 1980

ASSAYER *[Signature]*

DEAN TOYE, B.Sc.  
CHIEF CHEMIST  
CERTIFIED B.C. ASSAYER



To: Teck Mining Corp.,

ACME ANALYTICAL LABORATORIES LTD.

Assaying & Trace Analysis

852 E. Hastings St., Vancouver, B. C. V6A 1R6

phone:253 - 3158

File No. 80-293

Type of Samples Soil

Disposition

GEOCHEMICAL ASSAY CERTIFICATE

4

SAMPLE No.				Mo	Cu	Ag							
13	N	11	W	1	2	.1							1
		11+50		1	4	.3							2
		12		1	4	.1							3
		12+50		1	4	.3							4
		13		1	8	.3							5
		13+50		1	6	.1							6
		14		1	4	.2							7
13	N	14+50	W	1	2	.1							8
													9
13+50N		4	W	1	8	.3							10
													11
14	N	4	W	1	10	.4							12
		4+50		1	6	.2							13
		5		1	6	.2							14
		5+50		1	54	.2							15
		6		1	76	.1							16
		6+50		1	12	.2							17
		7		3	24	.1							18
		7+50		1	8	.5							19
		8		1	4	.1							20
		8+50		1	4	.3							21
		9		2	14	.3							22
		10		1	2	.2							23
		10+50		1	2	.1							24
		11		1	4	.1							25
		11+50		1	6	.2							26
		12		1	2	.1							27
		12+50		2	28	.2							28
		13		1	36	.4							29
		13+50		1	4	.1							30
		14		1	4	.2							31
		14+50		1	2	.1							32
		15+50		1	10	.2							33
		16		1	4	.1							34
		16+50		1	16	.3							35
		17		1	8	.2							36
14	N	17+50	W	1	4	.3							37
													38
L15		3	W	2	34	.2							39
L15		3+50	W	3	28	.5							40

All reports are the confidential property of clients  
All results are in PPM.

DIGESTION:.....

DETERMINATION:.....

DATE SAMPLES RECEIVED May 27, 1980

DATE REPORTS MAILED June 2, 1980

ASSAYER Dean Toy

DEAN TOYE, B.Sc.  
CHIEF CHEMIST  
CERTIFIED B.C. ASSAYER



To: Teck Mining Corp.,

ACME ANALYTICAL LABORATORIES LTD.

Assaying & Trace Analysis

852 E. Hastings St., Vancouver, B. C. V6A 1R6

phone:253 - 3158

File No. 80-293

Type of Samples Soil

### GEOCHEMICAL ASSAY CERTIFICATE

Disposition

5

SAMPLE No.		Mo	Cu	Ag							
L15	4 W	1	44	.2							1
	4+50	1	6	.2							2
	5	1	8	.5							3
	5+50	1	6	.4							4
	6	1	2	.1							5
	6+50	1	10	.1							6
	7	1	2	.2							7
	7+50	1	2	.3							8
	8	1	2	.2							9
	8+50	1	12	.1							10
	9	1	152	1.2							11
	9+50	1	6	.2							12
	10	1	8	.7							13
	10+50	1	6	.3							14
	11	2	46	.1							15
	11+50	1	6	.1							16
	12+50	1	60	.3							17
	13	1	14	.5							18
	13+50	1	4	.2							19
	14	1	14	.1							20
L15	14+50W	1	2	.1							21
											22
L16N	3 W	1	8	.2							23
	3+50	1	6	.3							24
	4	1	6	.1							25
	4+50	1	36	.4							26
	5	1	16	.2							27
	5+50	1	250	4.8							28
	6	1	8	.2							29
	6+50	6	184	3.1							30
	7	1	34	.6							31
	7+50	1	16	.5							32
	8	1	8	.4							33
	8+50	1	28	.4							34
	9	1	64	.5							35
	9+50	1	16	.2							36
	10	1	20	.1							37
L16N	10+50W	1	10	.3							38
											39
											40

All reports are the confidential property of clients  
All results are in PPM.

DIGESTION:.....

DETERMINATION:.....

DATE SAMPLES RECEIVED May 27, 1980

DATE REPORTS MAILED June 2, 1980

ASSAYER Dean Toye

DEAN TOYE, B.Sc.  
CHIEF CHEMIST  
CERTIFIED B.C. ASSAYER



To: Teck Mining Corp.,

ACME ANALYTICAL LABORATORIES LTD.

Assaying & Trace Analysis

852 E. Hastings St., Vancouver, B. C. V6A 1R6

phone:253 - 3158

File No. 80-293

Type of Samples Soil

Disposition

GEOCHEMICAL ASSAY CERTIFICATE

6

SAMPLE No.	Mo	Cu	Ag								
L16N 11 W	1	16	.2								1
11+50	3	120	2.0								2
12	1	56	.3								3
12+50	1	8	.2								4
13	1	62	.1								5
13+50	1	26	.3								6
14	1	38	.4								7
L16N 14+50 W	1	8	.1								8
											9
L17N 3 W	1	28	.2								10
4	1	12	.2								11
4+50	1	36	.3								12
5	1	22	.5								13
5+50	1	6	.3								14
6	2	26	.1								15
6+50	1	96	.9								16
7+50	1	10	.5								17
8	1	14	.1								18
8+50	1	16	.1								19
9	1	4	.2								20
9+50	1	8	.1								21
10	1	20	.1								22
10+50	1	6	.2								23
11	1	24	.1								24
11+50	1	14	.2								25
12	1	4	.3								26
12+50	1	4	.1								27
13	1	10	.2								28
13+50	1	8	.2								29
14	1	8	.1								30
L17N 14+50 W	1	4	.1								31
											32
L18 4+50 W	1	10	.2								33
5	1	10	.2								34
5+50	1	4	.1								35
6	1	12	.1								36
6+50	1	6	.1								37
7	1	6	.3								38
L18 7+50 W	1	4	.1								39
											40

All reports are the confidential property of clients  
All results are in PPM.

DIGESTION:.....

DETERMINATION:.....

DATE SAMPLES RECEIVED May 27, 1980

DATE REPORTS MAILED June 2, 1980

ASSAYER

DEAN TOYE, B.Sc.  
CHIEF CHEMIST  
CERTIFIED B.C. ASSAYER



To: Teck Mining Corp.,

ACME ANALYTICAL LABORATORIES LTD.

Assaying & Trace Analysis

852 E. Hastings St., Vancouver, B. C. V6A 1R6

phone:253 - 3158

80-293

File No. \_\_\_\_\_

Type of Samples Soil

Disposition \_\_\_\_\_

### GEOCHEMICAL ASSAY CERTIFICATE

7

SAMPLE No.			Mo	Cu	Ag							
L18	8	W	1	280	2.0							1
	8+50		1	12	.3							2
	9		1	10	.2							3
	9+50		1	16	.2							4
	10		1	4	.1							5
	10+50		1	4	.3							6
	11		1	8	.2							7
	11+50		1	4	.4							8
	12		1	2	.1							9
	12+50		1	18	.6							10
	13		1	1100	8.0							11
	13+50		1	29	.8							12
	14		3	2	.1							13
L18	14+50	W	1	3	.1							14
												15
L19	4+50	W	1	34	1.1							16
	5		1	6	.4							17
	5+50		1	10	.3							18
	6		1	10	.1							19
	6+50		1	6	.4							20
	7		1	3	.5							21
	7+50		1	5	.2							22
	8		1	6	.1							23
	8+50		1	4	.4							24
	9		1	4	.2							25
	9+50		1	1200	.1							26
	10		1	6	.2							27
	10+50		1	12	.3							28
	11		1	11	.2							29
	11+50		1	12	.4							30
	12		16	25	.2							31
	12+50		1	8	.2							32
	13		1	20	.1							33
	13+50		1	19	.1							34
	14		1	24	.1							35
L19	14+50	W	1	6	.2							36
												37
L20	3	W	1	3	.1							38
L20	3+50	W	1	5	.2							39
												40

All reports are the confidential property of clients  
All results are in PPM.

DIGESTION:.....

DETERMINATION:.....

DATE SAMPLES RECEIVED May 27, 1980

DATE REPORTS MAILED June 2, 1980

ASSAYER Dean Toyé

DEAN TOYE, B.Sc.  
CHIEF CHEMIST  
CERTIFIED B.C. ASSAYER



To: Teck Mining Corp.,

ACME ANALYTICAL LABORATORIES LTD.

Assaying & Trace Analysis

852 E. Hastings St., Vancouver, B. C. V6A 1R6

phone:253 - 3158

File No. 80-293

Type of Samples Soil

Disposition

GEOCHEMICAL ASSAY CERTIFICATE

8

SAMPLE No.			Mo	Cu	Ag							
L20	6	W	1	40	.3							1
	6+50		1	42	.1							2
	7		1	8	.5							3
	7+50		1	48	.4							4
	8		1	5	.3							5
	8+50		1	25	.2							6
	9		1	2	.1							7
	9+50		1	4	.2							8
	10		1	4	.2							9
	10+50		1	2	.1							10
	11		1	7	.1							11
	11+50		1	3	.1							12
	12		4	255	1.4							13
	12+50		1	8	.1							14
	13		1	10	.1							15
L20	14	W	1	37	.1							16
												17
L21	3	W	3	18	.2							18
	3+50		1	8	.3							19
	4		1	6	.1							20
	4+50		1	22	.4							21
	6+50		1	40	.5							22
	7		1	15	.2							23
	7+50		1	5	.3							24
	8		1	4	.1							25
L21	8+50	W	1	3	.1							26
												27
L21E	15+50	N	1	8	.1							28
	16		4	170	.3							29
	16+50		1	28	.2							30
	17		1	16	.2							31
	17+50		1	30	.3							32
	18		1	12	.1							33
	18+50		1	4	.1							34
	19		1	9	.1							35
	19+50		1	24	.1							36
	20		1	20	.1							37
	20+50		1	6	.2							38
L21E	21	N	1	16	.3							39
												40

All reports are the confidential property of clients  
All results are in PPM.

DIGESTION:.....

DETERMINATION:.....

DATE SAMPLES RECEIVED May 27, 1980

DATE REPORTS MAILED June 2, 1980

ASSAYER [Signature]

DEAN TOYE, B.Sc.  
CHIEF CHEMIST  
CERTIFIED B.C. ASSAYER



To: Teck Mining Corp.,

ACME ANALYTICAL LABORATORIES LTD.

Assaying & Trace Analysis

852 E. Hastings St., Vancouver, B. C. V6A 1R6

phone:253 - 3158

File No. 80-293

Type of Samples Soil

Disposition \_\_\_\_\_

**GEOCHEMICAL ASSAY CERTIFICATE**

9

SAMPLE No.		Mo	Cu	Ag								
L21E	21+50 N	1	5	.4								1
L21E	22 N	1	3	.2								2
												3
22N	6 W	1	38	.3								4
	6+50	1	3	.2								5
	7	1	3	.3								6
	7+50	1	570	5.9								7
	8	1	13	.7								8
	8+50	1	3	.3								9
	9	1	4	.3								10
	9+50	1	8	.2								11
	10	1	27	.4								12
	10+50	1	30	.5								13
	11	1	11	.6								14
	11+50	1	4	.4								15
	12	1	4	.3								16
	12+50	1	40	.1								17
	13	3	10	.2								18
	13+50	1	6	.1								19
	14	1	5	.1								20
22N	14+50 W	2	8	.2								21
22+50N	6 W	1	4	.4								22
23N	6+50 W	1	16	.1								23
	7	6	130	.4								24
	7+50	1	110	.8								25
	8	3	16	.5								26
	8+50	1	10	.3								27
	9+50	2	6	.1								28
	10	2	12	.3								29
	10+50	1	32	.7								30
	11	1	3	.1								31
	11+50	1	2	.1								32
	12	3	26	.1								33
	12+50	2	6	.1								34
	13	2	6	.2								35
	13+50	2	3	.1								36
	14	2	3	.1								37
23N	14+50 W	2	12	.4								38
												39
												40

All reports are the confidential property of clients  
All results are in PPM.

DIGESTION:.....

DETERMINATION:.....

DATE SAMPLES RECEIVED May 27, 1980

DATE REPORTS MAILED June 2, 1980

ASSAYER Dean Toye

DEAN TOYE, B.Sc.  
CHIEF CHEMIST  
CERTIFIED B.C. ASSAYER





To: Teck Mining Corp.,

ACME ANALYTICAL LABORATORIES LTD.

Assaying & Trace Analysis

852 E. Hastings St., Vancouver, B. C. V6A 1R6

phone: 253 - 3158

File No. 80-293

Type of Samples Soil

Disposition \_\_\_\_\_

### GEOCHEMICAL ASSAY CERTIFICATE

10

SAMPLE No.			Mo	Cu	Ag							
25N	3	W	1	8	.2							1
	4		1	18	.1							2
	4+50		4	41	.2							3
	5		1	10	.2							4
	5+50		1	12	.6							5
	6		1	4	.2							6
	6+50		1	40	1.9							7
	8+50		1	10	.2							8
	9		1	30	.1							9
	9+50		1	17	.1							10
	10		1	30	.1							11
	10+50		1	25	.1							12
	11		1	57	.1							13
	11+50		1	4	.2							14
	12		1	4	.1							15
	12+50		1	10	.2							16
	13+50		1	4	.2							17
	14		1	5	.2							18
25N	14+50	W	1	6	.2							19
												20
												21
5+50W	7+50	N	1	30	1.2							22
5+50W	8		1	10	.5							23
												24
15W	0	N	1	2	.1							25
	0+50		1	4	.1							26
	1		1	3	.1							27
	1+50		1	70	.6							28
	2		1	4	.2							29
	2+50		1	2	.1							30
	3		1	2	.1							31
	3+50		1	2	.2							32
	4		1	3	.1							33
	4+50		8	140	.8							34
	5		8	440	2.0							35
	5+50		6	210	1.0							36
	6		15	420	1.5							37
	6+50		3	60	.1							38
15W	7	N	1	6	.1							39
												40

All reports are the confidential property of clients  
All results are in PPM.

DIGESTION:.....

DETERMINATION:.....

DATE SAMPLES RECEIVED May 27, 1980

DATE REPORTS MAILED June 2, 1980

ASSAYER

*Dean Toyé*  
DEAN TOYE, B.Sc.  
CHIEF CHEMIST  
CERTIFIED B.C. ASSAYER



To: Teck Mining Corp.,

ACME ANALYTICAL LABORATORIES LTD.

Assaying & Trace Analysis

852 E. Hastings St., Vancouver, B. C. V6A 1R6

phone: 253 - 3158

File No. 80-293

Type of Samples Soil

Disposition \_\_\_\_\_

### GEOCHEMICAL ASSAY CERTIFICATE

11

SAMPLE No.	Mo	Cu	Ag								
15W 7+50 N	6	245	1.4								1
8	1	28	.2								2
8+50	1	6	.2								3
9	1	18	.3								4
9+50	1	4	.1								5
10	1	4	.1								6
10+50	1	12	.1								7
11	1	160	.7								8
11+50	1	2	.2								9
12	1	30	.2								10
12+50	1	2	.2								11
13	1	16	.4								12
13+50	1	4	.2								13
14	1	2	.2								14
15W 14+50 N	1	290	.8								15
											16
BL15W 15 N	1	6	.1								17
15+50	1	330	1.8								18
16	1	46	.5								19
16+50	1	3	.2								20
17	1	2	.2								21
17+50	1	3	.3								22
18	1	240	.5								23
18+50	1	165	.3								24
19	1	52	.3								25
19+50	1	12	1.2								26
20	1	240	1.3								27
21	1	13	.4								28
21+50	1	6	.2								29
22	1	4	.2								30
22+50	1	6	.4								31
23	4	28	.4								32
23+50	1	14	.3								33
24	1	60	.1								34
24+50	1	12	.3								35
25	1	4	.1								36
25+50	1	5	.2								37
BL15W 26 N	1	20	.4								38
											39
											40

All reports are the confidential property of clients  
All results are in PPM.

DIGESTION:.....

DETERMINATION:.....

DATE SAMPLES RECEIVED May 27, 1980

DATE REPORTS MAILED June 2, 1980

ASSAYER *[Signature]*

DEAN TOYE, B.Sc.  
CHIEF CHEMIST  
CERTIFIED B.C. ASSAYER



To: Teck Mining Corp.,

ACME ANALYTICAL LABORATORIES LTD.

Assaying & Trace Analysis

852 E. Hastings St., Vancouver, B. C. V6A 1R6

phone:253 - 3158

File No. 80-293

Type of Samples Soil

Disposition \_\_\_\_\_

### GEOCHEMICAL ASSAY CERTIFICATE

12

SAMPLE No.	Mo	Cu	Ag								
BL15W 27 N	1	4	.3								1
27+50	10	520	1.8								2
28	1	16	.1								3
28+50	1	27	.1								4
29	1	28	.5								5
29+50	1	4	.1								6
30	1	4	.1								7
30+50 N.S.											8
31	3	82	.3								9
31+50	3	8	.1								10
32	3	6	.1								11
32+50	1	2	.2								12
33	2	18	.1								13
33+50	1	12	.1								14
34	3	18	.1								15
34+50	1	7	.1								16
BL15W 35 N	1	96	.1								17
IIN	1	92	.4								19
P.F.#1	3	185	2.2								21
											22
											23
											24
											25
											26
											27
											28
											29
											30
											31
											32
											33
											34
											35
											36
											37
											38
											39
											40

All reports are the confidential property of clients  
 All results are in PPM.  
 DIGESTION:.....  
 DETERMINATION:.....

DATE SAMPLES RECEIVED May 27, 1980  
 DATE REPORTS MAILED June 2, 1980  
 ASSAYER Dean Toye

DEAN TOYE, B.Sc.  
 CHIEF CHEMIST  
 CERTIFIED B.C. ASSAYER



To: Teck Explorations Ltd.,

ACME ANALYTICAL LABORATORIES LTD.

Assaying & Trace Analysis

852 E. Hastings St., Vancouver, B. C. V6A 1R6

phone:253 - 3158

File No. 80-1419

Type of Samples Soil

Disposition

GEOCHEMICAL ASSAY CERTIFICATE

Project # 1259 'Minerva'

23

SAMPLE No.			Mo	Cu	Ag							
LO	0	E	1	9	.1							1
	0+50		1	3	.1							2
	1		1	3	.1							3
	1+50		1	2	.1							4
	2		1	68	.4							5
	2+50		1	2	.1							6
	3		1	4	.1							7
	3+50		1	2	.1							8
	4		1	5	.1							9
	4+50		1	3	.1							10
	5		1	6	.1							11
	5+50		1	2	.1							12
	6		1	5	.1							13
	6+50		1	7	.1							14
	7		1	8	.1							15
	7+50		1	2	.1							16
	8		1	8	.1							17
	8+50		1	8	.1							18
	9		1	13	.1							19
	9+50		1	14	.1							20
LO	10	E	1	17	.1							21
												22
LIN	0	E	1	13	.1							23
	0+50		1	8	.1							24
	1		1	7	.1							25
	1+50		1	3	.1							26
	2		1	39	.1							27
	2+50		1	15	.1							28
	3		1	9	.3							29
	3+50		1	6	.1							30
	4		1	8	.1							31
	4+50		1	6	.1							32
	5		1	5	.1							33
	5+50		1	6	.1							34
	6		1	2	.1							35
	6+50		1	9	.1							36
	7		1	9	.2							37
	7+50		1	12	.1							38
LIN	8	E	1	11	.1							39
LIN	8+50	E	1	11	.1							40

All reports are the confidential property of clients  
All results are in PPM.

DIGESTION:.....

DETERMINATION:.....

DATE SAMPLES RECEIVED.....

DATE REPORTS MAILED.....

ASSAYER *Dean Toye*

DEAN TOYE, B.Sc.  
CHIEF CHEMIST  
CERTIFIED B.C. ASSAYER



To: Teck Explorations Ltd.,

ACME ANALYTICAL LABORATORIES LTD.

Assaying & Trace Analysis

852 E. Hastings St., Vancouver, B. C. V6A 1R6

phone:253 - 3158

File No. 80-1419

Type of Samples

Disposition

GEOCHEMICAL ASSAY CERTIFICATE

Project # 1259 'Minerva'

23A

SAMPLE No.			Mo	Cu	Ag							
L2N	00	E	1	6	.1							1
	0+50		1	19	.1							2
	1		1	14	.1							3
	1+50		1	6	.1							4
	2		1	5	.1							5
	2+50		1	5	.4							6
	3		1	17	.1							7
	3+50		1	3	.1							8
	4		1	23	.1							9
	4+50		1	3	.1							10
	5		1	2	.1							11
	5+50		1	2	.1							12
	6		1	38	.1							13
	6+50		1	3	.1							14
	7		1	38	.1							15
	7+50		1	8	.1							16
	8		1	6	.1							17
	8+50		1	2	.1							18
	9		1	13	.1							19
	9+50		1	23	.1							20
L2N	10	E	1	33	.1							21
												22
L4N	00	E	1	3	.1							23
	0+50		1	2	.1							24
	1		1	2	.1							25
	1+50		1	5	.1							26
	2		1	3	.1							27
	2+50		1	9	.1							28
	3		1	4	.1							29
	3+50		1	31	.1							30
	4		1	3	.1							31
	4+50		1	8	.1							32
	5		1	4	.1							33
	5+50		1	6	.1							34
	6		1	13	.1							35
	6+50		1	11	.1							36
	7		1	10	.1							37
	7+50	N.S.										38
L4N	8	E	1	31	.1							39
												40

All reports are the confidential property of clients  
All results are in PPM.

DIGESTION:.....

DETERMINATION:.....

DATE SAMPLES RECEIVED.....

DATE REPORTS MAILED.....

ASSAYER *Dean Toye*

DEAN TOYE, B.Sc.  
CHIEF CHEMIST  
CERTIFIED B.C. ASSAYER



To: Teck Explorations Ltd.,

ACME ANALYTICAL LABORATORIES LTD.

Assaying & Trace Analysis

852 E. Hastings St., Vancouver, B. C. V6A 1R6

phone:253 - 3158

File No. 80-1419

Type of Samples \_\_\_\_\_

Disposition \_\_\_\_\_

### GEOCHEMICAL ASSAY CERTIFICATE

Project# 1259 'Minerva'

23B

SAMPLE No.	Mo	Cu	Ag								
L4N 8+50 E	1	4	.1								1
9	1	20	.3								2
9+50	1	42	.5								3
L4N 10 E	1	19	.3								4
											5
L6N 00 E	1	3	.1								6
0+50	1	12	.1								7
1	1	7	.1								8
1+50	1	9	.1								9
2	1	5	.2								10
L6N 2+50 E	1	42	.4								11
											12
											13
											14
											15
											16
											17
											18
											19
											20
											21
											22
											23
											24
											25
											26
											27
											28
											29
											30
											31
											32
											33
											34
											35
											36
											37
											38
											39
											40

All reports are the confidential property of clients  
All results are in PPM.

DIGESTION:.....

DETERMINATION:.....

DATE SAMPLES RECEIVED \_\_\_\_\_

DATE REPORTS MAILED \_\_\_\_\_

ASSAYER Dean Toye

DEAN TOYE, B.Sc.  
CHIEF CHEMIST  
CERTIFIED B.C. ASSAYER



To: Teck Explorations Ltd.,

ACME ANALYTICAL LABORATORIES LTD.

Assaying & Trace Analysis

852 E. Hastings St., Vancouver, B. C. V6A 1R6

phone:253 - 3158

File No. 80-1419

Type of Samples

Disposition

GEOCHEMICAL ASSAY CERTIFICATE

Project # 1259 'Minerva'

24

SAMPLE No.	Mo	Cu	Ag							
L 8N 0+50 E	1	7	.1							1
1	1	7	.1							2
1+50	1	2	.1							3
2	1	6	.1							4
2+50	1	2	.1							5
3	1	3	.1							6
3+50	1	2	.1							7
4	1	5	.1							8
4+50	1	14	.1							9
5	1	74	.9							10
5+50	1	37	.1							11
										12
6+50	1	33	.1							13
7	1	10	.1							14
7+50	1	24	.1							15
8	1	6	.1							16
8+50	1	5	.1							17
9	1	19	.1							18
9+50	1	104	1.1							19
L8N 10 E	1	184	.9							20
										21
L10N 0+50 E	1	9	.1							22
1	1	11	.1							23
1+50	1	24	.1							24
2	1	4	.1							25
2+50	1	14	.1							26
3	1	7	.2							27
3+50	1	4	.1							28
4	1	15	.1							29
4+50	1	15	.2							30
5	1	14	.1							31
5+50	1	5	.1							32
6	2	24	.1							33
6+50	1	20	.1							34
7	1	22	.1							35
7+50	1	33	.1							36
L10N 8 E	1	58	.1							37
										38
										39
										40

All reports are the confidential property of clients  
All results are in PPM.

DIGESTION:.....

DETERMINATION:.....

DATE SAMPLES RECEIVED.....

DATE REPORTS MAILED.....

ASSAYER Dean Toye

DEAN TOYE, B.Sc.  
CHIEF CHEMIST  
CERTIFIED B.C. ASSAYER



To: Teck Explorations Ltd.,

ACME ANALYTICAL LABORATORIES LTD.

Assaying & Trace Analysis

852 E. Hastings St., Vancouver, B. C. V6A 1R6

phone:253 - 3158

File No. 80-1419

Type of Samples

Disposition

GEOCHEMICAL ASSAY CERTIFICATE

Project # 1259 'Minerva'

25

SAMPLE No.	Mo	Cu	Ag							
L10N 8+50 E	3	104	.3							1
9	1	74	.2							2
9+50	1	20	.1							3
L10N 10 E	3	34	.1							4
										5
L12N 0 E	1	19	.1							6
0+50	1	7	.1							7
1	1	14	.1							8
1+50	1	11	.1							9
2	1	23	.1							10
2+50	1	86	.4							11
3	1	21	.1							12
3+50	1	146	.6							13
4	2	30	.1							14
4+50	1	25	.1							15
5	3	132	1.1							16
5+50	1	27	.1							17
6	1	11	.2							18
6+50	1	10	.1							19
7	1	37	.1							20
7+50	1	11	.2							21
8	2	58	.1							22
8+50	1	7	.1							23
9	2	36	.1							24
9+50	1	24	.2							25
L12N 10 E	1	78	.1							26
										27
L14N 0+50 E	1	58	.5							28
1	1	26	.2							29
1+50	1	70	.1							30
2	1	27	.1							31
2+50	1	12	.1							32
3	1	106	.4							33
3+50	1	10	.1							34
4	1	48	.1							35
4+50	1	64	.4							36
5	1	16	.3							37
5+50	1	22	.5							38
6	1	33	.1							39
L14N 6+50	1	32	.4							40

All reports are the confidential property of clients  
All results are in PPM.

DIGESTION:.....

DETERMINATION:.....

DATE SAMPLES RECEIVED.....

DATE REPORTS MAILED.....

ASSAYER *D. Toye*

DEAN TOYE, B.Sc.  
CHIEF CHEMIST  
CERTIFIED B.C. ASSAYER





To: Teck Explorations Ltd,

ACME ANALYTICAL LABORATORIES LTD.

Assaying & Trace Analysis

852 E. Hastings St., Vancouver, B. C. V6A 1R6

phone:253 - 3158

File No. 80-1419

Type of Samples

Disposition

### GEOCHEMICAL ASSAY CERTIFICATE

Project # 1259 'Minerva'

26

SAMPLE No.	Mo	Cu	Ag								
L14N 7 E	1	15	.6								1
7+50	1	26	.5								2
8	1	46	.7								3
8+50	1	8	1.1								4
9	1	16	.4								5
9+50	3	27	1.0								6
L14N 10 E	1	14	.6								7
											8
L16N 0 E	1	23	.3								9
0+50	1	14	1.0								10
1	1	26	.8								11
1+50	1	46	.1								12
2	1	31	.2								13
2+50	1	22	.4								14
3	1	8	.7								15
3+50	2	18	.8								16
4	4	110	1.7								17
4+50	1	13	.5								18
5	1	12	.6								19
5+50	1	36	.3								20
6	3	12	1.0								21
6+50	1	23	.4								22
7	1	11	1.2								23
7+50	1	9	1.1								24
8	1	166	5.5								25
8+50	1	15	1.1								26
9	2	750	1.8								27
9+50	1	49	.5								28
L16N 10 E	1	35	.2								29
											30
L18N 0 E	6	40	.3								31
0+50	2	100	.8								32
1	1	35	1.0								33
1+50	1	38	.4								34
2	1	9	.1								35
2+50	3	23	1.0								36
3	3	104	.8								37
3+50	2	37	.5								38
4	1	22	.6								39
L18N 4+50 E	1	5	.4								40

All reports are the confidential property of clients  
All results are in PPM.

DIGESTION:.....

DETERMINATION:.....

DATE SAMPLES RECEIVED.....

DATE REPORTS MAILED.....

ASSAYER Dean Toyne

DEAN TOYNE, B.Sc.  
CHIEF CHEMIST  
CERTIFIED B.C. ASSAYER



To: Teck Explorations Ltd.,  
 1100 - 1199 W. Hastings St.,  
 Vancouver, B.C.  
 V6E 2K5

ACME ANALYTICAL LABORATORIES LTD.

Assaying & Trace Analysis  
 852 E. Hastings St., Vancouver, B. C. V6A 1R6  
 phone: 253 - 3158

File No. 80-1419

Type of Samples \_\_\_\_\_

Disposition \_\_\_\_\_

**GEOCHEMICAL ASSAY CERTIFICATE**

Project # 1259 'Minerva'

27

SAMPLE No.	Mo	Cu	Ag																
L18N 5 E	2	6	.1																1
5+50	1	4	.3																2
6	1	11	.5																3
6+50	3	8	.6																4
7	1	30	.7																5
7+50	1	14	.5																6
8	4	134	.6																7
8+50	2	13	.3																8
9	1	9	.1																9
9+50	1	15	.4																10
L18N 10 E	1	7	.6																11
																			12
L20N 0+50 E	1	29	.5																13
1	2	14	.4																14
1+50	1	22	.5																15
2	3	80	.6																16
2+50	3	17	.5																17
3	2	18	.9																18
3+50	4	98	.6																19
4 org.	7	258	1.5																20
4+50	2	19	.9																21
5	1	9	.5																22
5+50	1	15	.4																23
6	2	36	.2																24
6+50	1	13	.3																25
7	3	13	.2																26
7+50	1	25	.5																27
8	1	20	.4																28
8+50	1	2	.5																29
9	1	58	1.2																30
9+50	1	35	.4																31
L20N 10 E	1	28	.6																32
																			33
																			34
																			35
																			36
																			37
																			38
																			39
																			40

All reports are the confidential property of clients  
 All results are in PPM.

DIGESTION:.....

DETERMINATION:.....

DATE SAMPLES RECEIVED \_\_\_\_\_

DATE REPORTS MAILED \_\_\_\_\_

ASSAYER Dean Toye

DEAN TOYE, B.Sc.  
 CHIEF CHEMIST  
 CERTIFIED B.C. ASSAYER



To: Teck Explorations Ltd.,

ACME ANALYTICAL LABORATORIES LTD.

Assaying & Trace Analysis

852 E. Hastings St., Vancouver, B. C. V6A 1R6

phone: 253 - 3158

File No. 80-1419

Type of Samples \_\_\_\_\_

### GEOCHEMICAL ASSAY CERTIFICATE

Disposition \_\_\_\_\_

Project # 1259 'Minerva'

23

SAMPLE No.	Mo	Cu	Ag									
LON 0+50 W	1	10	.1									1
1	1	34	.1									2
1+50	1	10	.1									3
2	1	7	.1									4
2+50	1	7	.2									5
3	1	28	.2									6
3+50	1	4	.5									7
4	1	43	.2									8
4+50	1	46	.2									9
5	1	2	.1									10
5+50	2	1	.3									11
6	1	79	.8									12
6+50	14	133	.4									13
7	1	13	.6									14
7+50	1	12	.1									15
8	1	11	.1									16
8+50	1	12	.1									17
9	1	3	.1									18
9+50	1	7	.1									19
10	1	10	.1									20
10+50	1	4	.1									21
11	1	7	.1									22
11+50	4	9	.1									23
12	1	5	.1									24
12+50	1	154	.7									25
13	28	117	2.3									26
13+50	3	114	1.0									27
14	11	32	.5									28
14+50	1	29	.3									29
15	1	4	.1									30
15+50	1	102	11.8									31
16	1	5	.1									32
16+50	1	12	.1									33
17	1	3	.1									34
17+50	1	3	.1									35
18	1	7	.1									36
18+50	1	170	2.2									37
LON 19 W	1	7	.1									38
												39
												40

All reports are the confidential property of clients  
All results are in PPM.

DIGESTION:.....

DETERMINATION:.....

DATE SAMPLES RECEIVED \_\_\_\_\_

DATE REPORTS MAILED \_\_\_\_\_

ASSAYER Dean Toyne

DEAN TOYNE, B.Sc.  
CHIEF CHEMIST  
CERTIFIED B.C. ASSAYER



To: Teck Explorations Ltd.,

ACME ANALYTICAL LABORATORIES LTD.

Assaying & Trace Analysis

852 E. Hastings St., Vancouver, B. C. V6A 1R6

phone:253 - 3158

File No. 80-1419

Type of Samples

Disposition

### GEOCHEMICAL ASSAY CERTIFICATE

Project # 1259 'Minerva'

29

SAMPLE No.	Mo	Cu	Ag								
LON 19+50 W	1	3	.1								1
20	1	7	.3								2
20+50	1	3	.2								3
21	1	3	.1								4
21+50	1	2	.1								5
22	1	1	.1								6
22+50	3	4	.1								7
23	1	5	.1								8
23+50	1	9	.2								9
24	1	8	.2								10
24+50	1	1	.1								11
LON 25 W	1	5	.1								12
											13
L1N 0+50 W	1	5	.1								14
1	1	7	.1								15
1+50	1	23	.3								16
2	1	12	.2								17
2+50	1	3	.2								18
3	1	9	.2								19
L1N 3+50 W	1	1	.1								20
											21
L2N 0+50 W	1	5	.1								22
1	1	4	.1								23
1+50	1	1	.1								24
2	1	18	.1								25
2+50	1	6	.4								26
3	1	5	.1								27
3+50 S	1	5	.1								28
4	3	7	.3								29
4+50	1	4	.1								30
											31
5+50	1	18	.4								32
6	1	5	.5								33
6+50	1	14	1.1								34
7	1	16	.5								35
7+50 S	1	26	.1								36
8	1	14	.3								37
8+50	1	9	.5								38
9	1	197	.9								39
L2N 9+50 W	6	26	.4								40

All reports are the confidential property of clients  
 All results are in PPM.  
 DIGESTION:.....  
 DETERMINATION:.....

DATE SAMPLES RECEIVED.....  
 DATE REPORTS MAILED.....  
 ASSAYER Dean Toye

DEAN TOYE, B.Sc.  
 CHIEF CHEMIST  
 CERTIFIED B.C. ASSAYER



To: Teck Explorations Ltd.,

ACME ANALYTICAL LABORATORIES LTD.

Assaying & Trace Analysis

852 E. Hastings St., Vancouver, B. C. V6A 1R6

phone:253 - 3158

File No. 80-1419

Type of Samples

Disposition

GEOCHEMICAL ASSAY CERTIFICATE

Project # 1259 'Minerva'

30

SAMPLE No.	Mo	Cu	Ag								
L2N 10 W	2	55	1.1								1
10+50	1	10	.4								2
11	1	17	.2								3
11+50	1	11	.2								4
12	1	8	.1								5
12+50	7	20	.2								6
13	1	11	.2								7
13+50	2	9	.1								8
14	2	43	.6								9
14+50	5	21	.4								10
15	1	1	.1								11
15+50	1	5	.1								12
16	2	9	.4								13
16+50	1	7	.2								14
17	1	4	.1								15
17+50	1	7	.1								16
18	1	35	.4								17
18+50	1	13	.1								18
19	1	30	.3								19
19+50	1	6	.1								20
20	1	13	.3								21
20+50	1	1	.1								22
21	1	4	.1								23
21+50	1	16	.1								24
22	1	3	.1								25
22+50	1	1	.1								26
23	4	12	.2								27
23+50	1	6	.1								28
24	1	23	.2								29
24+50	1	3	.1								30
L2N 25 W	1	1	.1								31
											32
L4N 0+50 W	1	7	.1								33
1	1	2	.1								34
1+50	1	1	.1								35
2	1	21	.1								36
2+50	1	8	.1								37
3	2	5	.2								38
L4N 3+50 W	1	15	.2								39
											40

All reports are the confidential property of clients  
All results are in PPM.

DIGESTION:.....

DETERMINATION:.....

DATE SAMPLES RECEIVED.....

DATE REPORTS MAILED.....

ASSAYER *Dean Toye*

DEAN TOYE, B.Sc.  
CHIEF CHEMIST  
CERTIFIED B.C. ASSAYER



To: Teck Explorations Ltd.,

ACME ANALYTICAL LABORATORIES LTD.

Assaying & Trace Analysis

852 E. Hastings St., Vancouver, B. C. V6A 1R6

phone:253 - 3158

File No. 80-1419

Type of Samples

Disposition

GEOCHEMICAL ASSAY CERTIFICATE

Project # 1259 'Minerva'

31

SAMPLE No.		Mo	Cu	Ag									
L4N 4 W		1	11	.1									1
4+50		2	23	.1									2
5		3	4	.1									3
5+50		3	12	.1									4
6	S	3	8	.1									5
6+50	S	4	13	.1									6
7		3	11	.1									7
7+50		2	10	.2									8
7+50 A		1	1	.1							Sample #2 A-1 Horizon		9
8		1	23	1.2									10
8+50	S	4	82	.7									11
9		1	12	.3									12
9+50		1	19	.1									13
10		5	30	.1									14
10+50		1	7	.1									15
11		4	19	.3									16
11+50		1	13	.3									17
12		2	12	.2									18
12+50		2	11	.4									19
13		1	16	.1									20
13+50		2	14	.2									21
14		2	39	.1									22
14+50		3	10	.1									23
15		2	9	.1									24
15+50		2	7	.1									25
16		2	10	.3									26
16+50		3	8	.1									27
17		1	8	.1									28
17+50		1	1	.1									29
18		6	6	.3									30
18+50		2	4	.1									31
19		1	7	.1									32
19+50		2	30	.1									33
20		3	11	.5									34
20+50		2	6	.1									35
21		3	5	.1									36
21+50		2	8	.1									37
L4N 22 W		2	12	.1									38
													39
													40

All reports are the confidential property of clients  
All results are in PPM.

DIGESTION:.....

DETERMINATION:.....

DATE SAMPLES RECEIVED.....

DATE REPORTS MAILED.....

ASSAYER *Dean Toye*

DEAN TOYE, B.Sc.  
CHIEF CHEMIST  
CERTIFIED B.C. ASSAYER



To: Teck Explorations Ltd.,

ACME ANALYTICAL LABORATORIES LTD.

Assaying & Trace Analysis

852 E. Hastings St., Vancouver, B.C. V6A 1R6

phone:253 - 3158

File No. 80-1419

Type of Samples

Disposition

GEOCHEMICAL ASSAY CERTIFICATE

Project # 1259 'Minerva'

32

SAMPLE No.	Mo	Cu	Ag							
L4N 22+50 W	2	2	.1							1
23	4	40	.5							2
23+50	4	124	.8							3
24	1	11	.1							4
24+50	1	4	.1							5
L4N 25	1	2	.1							6
										7
L6N 0+50	1	5	.1							8
1	1	8	.4							9
1+50	2	4	.1							10
2	1	4	.2							11
2+50	1	2	.1							12
3	1	8	.1							13
3+50	1	9	.1							14
4	1	5	.1							15
4+50	1	12	.2							16
5	1	3	.1							17
5+50	1	5	.1							18
6	1	10	.3							19
										20
15	1	3	.3							21
15+50	2	8	.2							22
16	4	10	.4							23
16+50	1	10	.3							24
17	1	42	.6							25
17+50	1	12	.1							26
18	2	18	.4							27
18+50	1	17	.5							28
19	1	14	.1							29
19+50	1	10	.1							30
20	2	9	.2							31
20+50	5	67	.6							32
21	3	14	.1							33
21+50	1	2	.1							34
22	4	5	.1							35
22+50	2	18	.3							36
23	5	12	.3							37
23+50	1	7	.4							38
24	2	64	.8							39
L6N 24+50 W	7	78	.4							40

All reports are the confidential property of clients  
All results are in PPM.

DIGESTION:.....

DETERMINATION:.....

DATE SAMPLES RECEIVED.....

DATE REPORTS MAILED.....

ASSAYER *D. Toye*

DEAN TOYE, B.Sc.  
CHIEF CHEMIST  
CERTIFIED B.C. ASSAYER



To: Teck Explorations Ltd.,

ACME ANALYTICAL LABORATORIES LTD.

Assaying & Trace Analysis

852 E. Hastings St., Vancouver, B. C. V6A 1R6

phone:253 - 3158

File No. 80-1419

Type of Samples

Disposition

### GEOCHEMICAL ASSAY CERTIFICATE

Project # 1259 'Minerva'

33

SAMPLE No.			Mo	Cu	Ag								
L6N	25	W	2	13	.1								1
													2
L8N	0	W	1	1	.1								3
	0+50		1	4	.1								4
	1		1	7	.1								5
	1+50		1	3	.2								6
	2		1	5	.2								7
	2+50		1	4	.1								8
	3		1	10	.1								9
	3+50		1	3	.1								10
	4		1	4	.1								11
	4+50		1	1	.1								12
	5		2	12	.3								13
													14
	15		3	76	.1								15
	15+50		3	18	.4								16
	16		3	22	.7								17
	16+50		2	16	.4								18
	17		4	15	.8								19
	17+50		3	11	.3								20
	18		2	25	.4								21
	18+50		2	12	.2								22
	19		3	17	.5								23
	19+50		14	50	1.0								24
	20		6	16	.3								25
	20+50		3	10	.2								26
	21		1	16	.1								27
	21+50		1	13	.4								28
	22		2	14	.4								29
	22+50		2	15	.5								30
	23		10	103	1.1								31
	23+50		3	17	.3								32
	24		1	9	.1								33
	24+50		3	8	.3								34
L8N	25	W	1	9	.4								35
													36
													37
													38
													39
													40

All reports are the confidential property of clients  
All results are in PPM.

DIGESTION:.....

DETERMINATION:.....

DATE SAMPLES RECEIVED \_\_\_\_\_

DATE REPORTS MAILED \_\_\_\_\_

ASSAYER \_\_\_\_\_

DEAN TOYE, B.Sc.  
CHIEF CHEMIST  
CERTIFIED B.C. ASSAYER





To: Teck Explorations Ltd.,

ACME ANALYTICAL LABORATORIES LTD.

Assaying & Trace Analysis

852 E. Hastings St., Vancouver, B. C. V6A 1R6

phone:253 - 3158

File No. 80-1419

Type of Samples

Disposition

GEOCHEMICAL ASSAY CERTIFICATE

Project #1259 'Minerva'

34

SAMPLE No.	Mo	Cu	Ag									
L10N 0 W	1	14	.1									1
0+50	1	9	.1									2
1	1	8	.1									3
1+50	1	8	.1									4
2	1	2	.1									5
2+50	1	12	.1									6
3	1	15	.1									7
3+50	1	16	.1									8
4	1	4	.1									9
4+50	1	21	.2									10
5	1	10	.2									11
												12
15	1	14	.1									13
15+50	3	26	.2									14
16	1	12	.2									15
16+50	1	7	.1									16
17	1	23	.1									17
17+50	1	41	.7									18
18	1	28	.6									19
18+50	1	2	.1									20
19	1	39	.4									21
19+50	1	35	.3									22
20	1	18	.2									23
20+50	1	4	.2									24
21	1	6	.3									25
21+50	1	125	1.4									26
22	1	24	.7									27
22+50	1	1	.1									28
23	1	17	.1									29
23+50	4	130	1.4									30
24	1	17	.3									31
24+50	1	10	.6									32
L10N 25 W	1	8	.3									33
												34
												35
												36
												37
												38
												39
												40

All reports are the confidential property of clients  
All results are in PPM.

DIGESTION:.....

DETERMINATION:.....

DATE SAMPLES RECEIVED.....

DATE REPORTS MAILED.....

ASSAYER *D. Toye*

DEAN TOYE, B.Sc.  
CHIEF CHEMIST  
CERTIFIED B.C. ASSAYER



To: Teck Explorations Ltd.,

ACME ANALYTICAL LABORATORIES LTD.

Assaying & Trace Analysis

852 E. Hastings St., Vancouver, B. C. V6A 1R6

phone:253 - 3158

File No. 80-1419

Type of Samples

Disposition

### GEOCHEMICAL ASSAY CERTIFICATE

Project # 1259 'Minerva'

35

SAMPLE No.	Mo	Cu	Ag								
L12N 0+50 W	1	5	.1								1
1	1	16	.1								2
1+50	2	60	.6								3
2	1	7	.1								4
2+50	1	12	.1								5
3	1	13	.1								6
3+50	1	23	.1								7
4	1	10	.1								8
											9
15	1	25	.2								10
15+50	1	9	.1								11
16	1	18	.4								12
16+50	1	170	.8								13
17	6	1100	9.5								14
17+50	1	22	.5								15
18	1	25	.6								16
18+50	1	25	.8								17
19	1	17	.6								18
19+50	1	15	.6								19
20	1	25	.1								20
20+50	1	28	.6								21
21	1	22	.5								22
21+50	1	20	.4								23
22	1	10	.6								24
											25
24	1	49	.1								26
24+50	1	14	.1								27
L12N 25 W	1	16	.3								28
											29
L14N 0 W	1	52	.4								30
0+50	1	17	.4								31
1	1	16	.3								32
1+50	1	13	.1								33
2	1	9	.1								34
2+50	1	7	.1								35
3	1	19	.5								36
L14N 3+50 W	1	15	.4								37
											38
											39
											40

All reports are the confidential property of clients  
All results are in PPM.

DIGESTION:.....

DETERMINATION:.....

DATE SAMPLES RECEIVED

DATE REPORTS MAILED

ASSAYER *D. Toye*

DEAN TOYE, B.Sc.  
CHIEF CHEMIST  
CERTIFIED B.C. ASSAYER



To: Teck Explorations Ltd.,

ACME ANALYTICAL LABORATORIES LTD.

Assaying & Trace Analysis

852 E. Hastings St., Vancouver, B. C. V6A 1R6

phone: 253 - 3158

File No. 80-1419

Type of Samples

Disposition

### GEOCHEMICAL ASSAY CERTIFICATE

Project # 1259 'Minerva'

36

SAMPLE No.	Mo	Cu	Ag									
L14N 18+50 W	1	11	.6									1
19	1	8	.8									2
19+50	4	7	.7									3
20	2	13	.1									4
20+50	1	6	.5									5
21	1	40	.1									6
21+50	1	18	.3									7
22	1	6	.4									8
22+50	1	3	.1									9
23	1	16	.3									10
23+50	1	52	.8									11
24	1	6	.1									12
24+50	1	5	.6									13
L14N 25 W	1	10	.1									14
												15
L16N 0+50 W	1	31	.1									16
1	1	1	.1									17
1+50	4	12	.2									18
2	4	10	.1									19
2+50	2	2	.1									20
												21
15	1	6	.1									22
15+50	3	35	.1									23
16	1	12	.1									24
16+50	1	29	.4									25
17	1	18	.2									26
17+50	1	16	.3									27
18	1	20	.4									28
18+50	1	35	.1									29
19	1	21	.1									30
19+50	1	33	.1									31
20	1	6	.2									32
20+50	2	23	.1									33
21	1	6	.3									34
21+50	1	340	.7									35
22	1	14	.4									36
22+50	1	6	.1									37
23	1	12	.1									38
23+50	1	7	.2									39
L16N 24 W	1	15	.1									40

All reports are the confidential property of clients  
All results are in PPM.

DIGESTION:.....

DETERMINATION:.....

DATE SAMPLES RECEIVED.....

DATE REPORTS MAILED.....

ASSAYER *Dean Toy*

DEAN TOYE, B.Sc.  
CHIEF CHEMIST  
CERTIFIED B.C. ASSAYER



To: Teck Explorations Ltd.,

ACME ANALYTICAL LABORATORIES LTD.

Assaying & Trace Analysis

852 E. Hastings St., Vancouver, B. C. V6A 1R6

phone:253 - 3158

File No. 80-1419

Type of Samples

Disposition

### GEOCHEMICAL ASSAY CERTIFICATE

Project # 1259 'Minerva'

37

SAMPLE No.	Mo	Cu	Ag										
L16N 24+50 W	1	9	.4										1
L16N 25 W	1	23	.2										2
													3
L18N 0+50	1	13	.2										4
1	5	143	.6										5
1+50	2	51	.1										6
2	5	78	.2										7
2+50	2	7	.5										8
3	1	11	.1										9
3+50	2	102	.1										10
													11
9	2	25	.1										12
9+50	5	28	.6										13
10	3	31	.9										14
10+50	2	24	.1										15
11	3	35	.1										16
11+50	2	40	.1										17
12	1	34	.2										18
12+50	4	17	.4										19
13	5	240	1.0										20
13+50	3	35	.1										21
14	1	12	.2										22
14+50	2	14	.1										23
15	3	62	.1										24
15+50	2	13	.2										25
16	4	10	.1										26
16+50	3	8	.1										27
17	3	19	.2										28
17+50	2	18	.4										29
18	2	11	.1										30
18+50	1	9	.3										31
19	1	6	.4										32
19+50	1	12	.3										33
20	1	11	.1										34
21+50	2	43	.1										35
21	1	18	.9										36
21+50	4	51	1.0										37
22	2	18	.1										38
22+50	1	5	.1										39
L18N 23 W	1	36	.5										40

All reports are the confidential property of clients  
All results are in PPM.

DIGESTION:.....

DETERMINATION:.....

DATE SAMPLES RECEIVED.....

DATE REPORTS MAILED.....

ASSAYER *D. Toye*

DEAN TOYE, B.Sc.  
CHIEF CHEMIST  
CERTIFIED B.C. ASSAYER



To: Teck Explorations Ltd.,

ACME ANALYTICAL LABORATORIES LTD.

Assaying & Trace Analysis

852 E. Hastings St., Vancouver, B. C. V6A 1R6

phone:253 - 3158

File No. 80-1419

Type of Samples

Disposition

GEOCHEMICAL ASSAY CERTIFICATE

Project # 1259 'Minerva'

38

SAMPLE No.	Mo	Cu	Ag								
L18N 23+50 W	1	7	.1								1
24	1	17	.2								2
24+50	1	12	.2								3
L18N 25	1	16	.1								4
											5
L19N 9 W	1	28	.3								6
9+50	1	26	.5								7
10	1	19	.3								8
10+50	1	30	.1								9
11	2	13	.2								10
11+50	1	15	.2								11
12	1	20	.2								12
12+50	1	19	.4								13
13	1	20	.6								14
13+50	1	26	.4								15
14	1	13	.3								16
14+50	3	22	.6								17
L19N 15 W	1	12	.1								18
											19
L20N 0 W	1	21	.2								20
											21
2	1	34	.2								22
2+50	1	33	.3								23
3	1	11	.5								24
3+50	1	8	.4								25
4	1	13	.5								26
4+50	1	23	.4								27
5	1	30	.5								28
5+50	1	13	.4								29
6	1	12	.4								30
											31
15	1	500	1.3								32
15+50	2	240	1.3								33
16	1	95	.3								34
16+50	1	12	.4								35
17	1	13	.3								36
17+50	1	9	.4								37
18	1	13	.1								38
18+50	1	7	.2								39
L20N 19 W	1	18	.3								40

All reports are the confidential property of clients  
All results are in PPM.

DIGESTION:.....

DETERMINATION:.....

DATE SAMPLES RECEIVED

DATE REPORTS MAILED

ASSAYER

DEAN TOYE, B.Sc.  
CHIEF CHEMIST  
CERTIFIED B.C. ASSAYER



To: Teck Explorations Ltd.,

ACME ANALYTICAL LABORATORIES LTD.

Assaying & Trace Analysis

852 E. Hastings St., Vancouver, B. C. V6A 1R6

phone:253 - 3158

File No. 80-1419

Type of Samples

Disposition

GEOCHEMICAL ASSAY CERTIFICATE

Project # 1259 'Minerva'

39

SAMPLE No.	Mo	Cu	Ag							
L20N 19+50 W	1	22	.3							1
20	5	10	.2							2
20+50	3	25	.3							3
21	2	185	1.6							4
21+50	2	17	.5							5
22	3	5	.1							6
22+50	1	2	.1							7
23	1	4	.1							8
23+50	2	6	.2							9
24	2	22	.4							10
24+50	2	7	.1							11
L20N 25 W	2	125	.2							12
										13
L22N 0	1	3	.1							14
0+50	2	9	.1							15
1	3	25	.1							16
1+50	1	5	.1							17
2	3	49	.4							18
2+50	1	3	.1							19
3	1	7	.2							20
3+50	1	12	.1							21
4	1	4	.2							22
4+50	1	8	.3							23
5	2	40	.1							24
5+50	3	36	.3							25
										26
15	2	29	.1							27
15+50	2	18	.1							28
16	3	17	.4							29
16+50	4	165	.1							30
17	1	34	.1							31
17+50	1	4	.4							32
18	1	18	.1							33
18+50	1	6	.2							34
19	1	13	.4							35
19+50 org.	4	285	.2							36
20 org.	2	210	.3							37
20+50 org.	4	175	.2							38
21	2	6	.1							39
L22N 21+50 W	2	12	.1							40

All reports are the confidential property of clients  
All results are in PPM.

DIGESTION:.....

DETERMINATION:.....

DATE SAMPLES RECEIVED.....

DATE REPORTS MAILED.....

ASSAYER Dean Toye

DEAN TOYE, B.Sc.  
CHIEF CHEMIST  
CERTIFIED B.C. ASSAYER



To: Teck Explorations Ltd.,

ACME ANALYTICAL LABORATORIES LTD.

Assaying & Trace Analysis

852 E. Hastings St., Vancouver, B. C. V6A 1R6

phone:253 - 3158

File No. 80-1419

Type of Samples

Disposition

### GEOCHEMICAL ASSAY CERTIFICATE

Project # 1259 'Minerva'

40

SAMPLE No.	Mo	Cu	Ag								
L22N 22 W	1	210	1.0								1
22+50	1	125	.1								2
23	1	12	.1								3
23+50	2	127	1.1								4
24	1	11	.1								5
24+50 W	1	16	.1								6
L22N 25 W	1	15	.1								7
											8
L24N 0 W	2	33	.1								9
0+50	1	8	.1								10
1	1	5	.1								11
1+50	2	20	.1								12
2	1	13	.1								13
2+50	1	14	.1								14
3	1	8	.2								15
3+50	1	49	.1								16
4	13	122	1.0								17
4+50	1	4	.1								18
5	1	24	.1								19
5+50	2	29	.1								20
6	1	9	.1								21
6+50	4	17	.4								22
7	1	7	.1								23
7+50	12	98	.1								24
8	1	9	.1								25
8+50	1	11	.1								26
9	1	17	.1								27
9+50	1	31	.1								28
10	1	8	.2								29
10+50	1	3	.1								30
11	1	3	.1								31
11+50	3	220	.1								32
12	1	18	.1								33
12+50	1	11	.1								34
13	1	14	.1								35
13+50	1	6	.1								36
14	1	20	.1								37
L24N 14+50 N	1	37	.1								38
											39
											40

All reports are the confidential property of clients  
All results are in PPM.

DIGESTION:.....

DETERMINATION:.....

DATE SAMPLES RECEIVED.....

DATE REPORTS MAILED.....

ASSAYER *Dean Toye*

DEAN TOYE, B.Sc.  
CHIEF CHEMIST  
CERTIFIED B.C. ASSAYER



To: Teck Exploration Ltd.,

ACME ANALYTICAL LABORATORIES LTD.

Assaying & Trace Analysis

852 E. Hastings St., Vancouver, B. C. V6A 1R6

phone:253 - 3158

File No. 80-1419

Type of Samples

Disposition

GEOCHEMICAL ASSAY CERTIFICATE

Project #1259 "Minerva"

SAMPLE No.	Mo	Cu	Ag								
L24N 15+50 W	4	37	.1								1
16	1	21	.1								2
16+50	1	12	.3								3
17	1	16	.2								4
17+50	1	16	.2								5
18	5	88	.3								6
18+50	2	27	.4								7
19	8	400	.6								8
19+50	3	35	.5								9
20	1	30	.5								10
20+50	1	11	.2								11
21	1	19	.1								12
21+50	1	17	.1								13
22	1	19	.1								14
22+50	3	38	.4								15
23	1	35	.3								16
23+50	1	81	.5								17
24	1	21	.1								18
24+50	1	14	.3								19
L24N 25	1	20	.2								20
L26N 0	1	14	.1								21
0+50	1	21	.2								22
1	1	19	.1								23
1+50	1	4	.1								24
2	1	4	.1								25
2+50	1	10	.3								26
3	1	14	.8								27
3+50	1	12	.1								28
4	1	11	.1								29
4+50	16	700	2.8								30
5	1	4	.1								31
5+50	1	24	.4								32
6	1	32	.3								33
6+50	1	27	.8								34
7	4	18	.1								35
8+50	1	28	.1								36
9	1	31	.1								37
L26N 9+50 W	1	24	1.4								38
											39
											40

All reports are the confidential property of clients  
All results are in PPM.

DIGESTION:.....

DETERMINATION:.....

DATE SAMPLES RECEIVED Nov. ....

DATE REPORTS MAILED .....

ASSAYER *Dean Toye*

DEAN TOYE, B.Sc.  
CHIEF CHEMIST  
CERTIFIED B.C. ASSAYER





To: Teck Explorations Ltd.,

ACME ANALYTICAL LABORATORIES LTD.

Assaying & Trace Analysis

852 E. Hastings St., Vancouver, B. C. V6A 1R6

phone: 253 - 3158

File No. 80-1419

Type of Samples

Disposition

GEOCHEMICAL ASSAY CERTIFICATE

Project # 1259 'Minerva'

42

SAMPLE No.	Mo	Cu	Ag								
L26N 10 W	1	12	.1								1
10+50	1	20	.1								2
11	1	18	.1								3
11+50	1	6	.1								4
12	1	38	.1								5
12+50	1	18	.1								6
13	1	12	.1								7
13+50	1	2	.1								8
14	1	34	.1								9
14+50	5	28	.3								10
15+50	1	16	.6								11
16	1	14	.1								12
16+50	1	12	.3								13
17	1	10	.1								14
17+50	1	9	.1								15
18	1	30	.3								16
18+50	1	20	.4								17
19	1	7	.3								18
19+50	1	10	.6								19
20	1	28	.1								20
20+50	1	17	.1								21
21	1	6	.1								22
21+50	1	23	.1								23
22	1	14	.4								24
22+50	1	12	.1								25
23	1	16	.6								26
23+50	1	17	.3								27
24	1	15	.1								28
24+50	1	15	.1								29
L26N 25	1	86	.3								30
L28N 0	1	29	.1								31
0+50	2	31	.1								32
1	2	26	.6								33
1+50	1	20	.1								34
2	1	31	.1								35
2+50	1	10	.4								36
3	1	33	.2								37
L28N 3+50 W	1	32	.4								38
											39
											40

All reports are the confidential property of clients  
All results are in PPM.

DIGESTION:.....

DETERMINATION:.....

DATE SAMPLES RECEIVED.....

DATE REPORTS MAILED.....

ASSAYER *Dean Toye*

DEAN TOYE, B.Sc.  
CHIEF CHEMIST  
CERTIFIED B.C. ASSAYER



To: Teck Explorations Ltd.,

File No. 80-1419

Type of Samples

Disposition

GEOCHEMICAL ASSAY CERTIFICATE

Project # 1259 'Minerva'

43

SAMPLE No.	Mo	Cu	Ag											
L28N 4 W	2	27	.1											1
4+50	2	11	.4											2
5	3	120	1.2											3
5+50	1	23	.2											4
6	2	26	.1											5
6+50	1	35	.2											6
7	1	28	.3											7
7+50	1	40	.4											8
8	1	65	.2											9
8+50	2	127	.9											10
9	5	270	1.4											11
9+50	1	14	.1											12
10	3	29	.1											13
10+50	1	7	.1											14
11	1	8	.1											15
11+50	1	33	.1											16
12	1	26	.1											17
12+50	1	15	.1											18
13	8	237	.8											19
13+50	1	11	.2											20
14	2	75	.1											21
14+50	1	64	.2											22
														23
15+50	1	17	.1											24
16	1	5	.1											25
16+50	1	13	.2											26
17	2	7	.1											27
17+50	1	12	.2											28
18	1	15	.3											29
18+50	1	23	.1											30
19	1	27	.1											31
19+50	1	31	.1											32
20	2	19	.2											33
20+50	1	14	.1											34
21	1	14	.1											35
21+50	1	8	.1											36
22	1	32	.1											37
22+50	1	10	.1											38
L28N 23 W	2	8	.2											39
														40

All reports are the confidential property of clients  
All results are in PPM.

DIGESTION:.....

DETERMINATION:.....

DATE SAMPLES RECEIVED.....

DATE REPORTS MAILED.....

ASSAYER *Dean Toye*

DEAN TOYE, B.Sc.  
CHIEF CHEMIST  
CERTIFIED B.C. ASSAYER



To: Teck Explorations Ltd.,

ACME ANALYTICAL LABORATORIES LTD.

Assaying & Trace Analysis

852 E. Hastings St., Vancouver, B. C. V6A 1R6

phone:253 - 3158

80-1419

File No. \_\_\_\_\_

Type of Samples \_\_\_\_\_

Disposition \_\_\_\_\_

### GEOCHEMICAL ASSAY CERTIFICATE

Project # 1259 'Minerva'

44

SAMPLE No.	Mo	Cu	Ag										
L28N 23+50 W	1	15	.1										1
24	1	12	.1										2
24+50	1	8	.2										3
L28N 25	1	12	.1										4
													5
L30N 0	1	10	.2										6
0+50	1	10	.3										7
1	1	7	.2										8
1+50	1	12	.2										9
2	1	8	.5										10
2+50	1	9	.2										11
3	1	6	.1										12
3+50	1	14	.4										13
4	1	7	.1										14
4+50	1	7	.1										15
5	1	9	.2										16
5+50	1	9	.1										17
6	1	2	.4										18
6+50	1	8	.1										19
7	1	60	.1										20
7+50	2	30	.1										21
8	2	32	.4										22
8+50	1	9	.1										23
9	10	74	.1										24
9+50	2	52	.1										25
10	1	25	.1										26
10+50	1	34	.1										27
11	1	17	.2										28
11+50	1	3	.2										29
12	1	1	.1										30
12+50	1	10	.2										31
13	1	2	.1										32
13+50	1	5	.4										33
14	1	4	.1										34
14+50	1	182	.8										35
													36
15+50	3	20	.4										37
16	2	240	.1										38
16+50	1	14	.4										39
L30N 17 W	1	14	.4										40

All reports are the confidential property of clients  
All results are in PPM.

DIGESTION:.....

DETERMINATION:.....

DATE SAMPLES RECEIVED \_\_\_\_\_

DATE REPORTS MAILED \_\_\_\_\_

ASSAYER Dean Toyne

DEAN TOYNE, B.Sc.  
CHIEF CHEMIST  
CERTIFIED B.C. ASSAYER



To: Teck Explorations Ltd.,

File No. 80-1419

Type of Samples

Disposition

GEOCHEMICAL ASSAY CERTIFICATE

Project # 1259 'Minerva'

SAMPLE No.		Mo	Cu	Ag								
L30N	17+50 W	1	16	.4								1
	18	3	50	1.0								2
	18+50	1	12	.1								3
	19	3	44	.3								4
	19+50	1	68	.1								5
	20	4	46	.1								6
	20+50	3	6	.1								7
	21	1	15	.1								8
	21+50	1	11	.1								9
	22	1	12	.1								10
	22+50	1	9	.4								11
	23	1	7	.4								12
	23+50	2	10	.1								13
	24	1	13	.1								14
	24+50	1	15	.3								15
L30N	25 W	1	16	.1								16
L32N	0	6	270	.1								17
	0+50	1	26	.4								18
	1	1	14	.6								19
	1+50	2	10	.4								20
	2	1	19	.8								21
	2+50	1	24	1.1								22
	3	1	38	.6								23
	3+50	1	43	.1								24
	4	1	17	.1								25
	4+50	1	4	.1								26
	5	1	22	.1								27
	5+50	1	20	.1								28
	6	1	3	.2								29
	6+50	2	13	.4								30
	7	1	16	.2								31
	7+50	1	22	.1								32
	8	1	10	1.1								33
	8+50	1	11	.5								34
	9	1	15	.4								35
	9+50	1	18	.1								36
	10	1	2	.1								37
L32N	10+50 W	1	35	.1								38
												39
												40

All reports are the confidential property of clients  
All results are in PPM.

DIGESTION:.....

DETERMINATION:.....

DATE SAMPLES RECEIVED.....

DATE REPORTS MAILED.....

ASSAYER *Dean Toye*

DEAN TOYE, B.Sc.  
CHIEF CHEMIST  
CERTIFIED B.C. ASSAYER



To: Teck Explorations Ltd.,

ACME ANALYTICAL LABORATORIES LTD.

Assaying & Trace Analysis

852 E. Hastings St., Vancouver, B. C. V6A 1R6

phone: 253 - 3158

File No. 80-1419

Type of Samples

Disposition

GEOCHEMICAL ASSAY CERTIFICATE

Project # 1259 'Minerva'

46

SAMPLE No.	Mo	Cu	Ag								
L32N 11 W	1	6	.1								1
11+50	1	10	.1								2
12	1	16	.1								3
12+50	2	5	.1								4
13	1	18	.1								5
13+50	1	30	.1								6
14	1	8	.1								7
14+50	1	8	.4								8
15+50	10	117	.3								10
16	1	19	.2								11
16+50	1	44	.4								12
17 S	2	200	1.2								13
17+50	1	28	.3								14
18	1	19	.6								15
18+50	1	9	.5								16
19	1	16	.3								17
19+50	1	7	.5								18
20	1	13	.1								19
20+50	1	13	.6								20
21	1	22	.1								21
21+50	1	8	.1								22
22	1	45	2.4								23
22+50	1	4	.1								24
23	1	6	.1								25
23+50	1	7	.1								26
24	1	11	.1								27
24+50	1	7	.1								28
L32N 25	1	12	.2								29
L34N 0	1	9	.4								31
0+50	1	22	.6								32
1	1	20	.7								33
1+50	1	7	.6								34
2	1	17	.1								35
2+50	2	32	.1								36
3	1	10	.6								37
3+50	1	21	.1								38
L34N 4 W	1	39	.1								39
											40

All reports are the confidential property of clients  
All results are in PPM.

DIGESTION:.....

DETERMINATION:.....

DATE SAMPLES RECEIVED.....

DATE REPORTS MAILED.....

ASSAYER *Dean Toye*

DEAN TOYE, B.Sc.  
CHIEF CHEMIST  
CERTIFIED B.C. ASSAYER



To: Teck Explorations Ltd.,

ACME ANALYTICAL LABORATORIES LTD.

Assaying & Trace Analysis

852 E. Hastings St., Vancouver, B. C. V6A 1R6

phone: 253 - 3158

File No. 80-1419

Type of Samples

Disposition

GEOCHEMICAL ASSAY CERTIFICATE

Project # 1259 'Minerva'

47

SAMPLE No.		Mo	Cu	Ag											
L34N 4+50 W		3	20	.3											1
5		2	10	.1											2
5+50		3	78	.3											3
6		3	19	.1											4
6+50		2	26	.1											5
7		2	20	.1											6
7+50		3	14	.3											7
8		3	31	.2											8
8+50		1	4	.1											9
9		3	6	.1											10
9+50		3	19	.3											11
10		2	16	.2											12
10+50	org.	3	320	.5											13
11		2	10	.1											14
11+50		1	44	.2											15
12		1	21	.1											16
12+50		1	10	.1											17
															18
13+50		1	8	.2											19
13+50A		3	34	.1											20
14		2	10	.1											21
14+50		2	25	.2											22
															23
15+50		2	45	.2											24
16		2	16	.4											25
16+50		3	10	.5											26
17		2	30	.3											27
17+50		2	38	.1											28
18		2	26	.3											29
18+50		2	47	.5											30
19		2	16	.1											31
19+50		3	12	.2											32
20		2	26	.3											33
20+50		1	13	.2											34
21		2	16	.1											35
21+50		1	15	.1											36
22		2	24	.1											37
22+50		1	26	.1											38
23		2	11	.1											39
L34N 23+50 W		1	23	.1											40

All reports are the confidential property of clients  
All results are in PPM.

DIGESTION:.....

DETERMINATION:.....

DATE SAMPLES RECEIVED.....

DATE REPORTS MAILED.....

ASSAYER *Dean Toye*

DEAN TOYE, B.Sc.  
CHIEF CHEMIST  
CERTIFIED B.C. ASSAYER



To: Teck Explorations Ltd.,

ACME ANALYTICAL LABORATORIES LTD.

Assaying & Trace Analysis

852 E. Hastings St., Vancouver, B. C. V6A 1R6

phone: 253 - 3158

File No. 80-1419

Type of Samples \_\_\_\_\_

Disposition \_\_\_\_\_

### GEOCHEMICAL ASSAY CERTIFICATE

Project # 1259 'Minerva'

48

SAMPLE No.	Mo	Cu	Ag									
L34N 24 W	1	8	.1									1
24+50	1	14	.4									2
L34N 25	1	4	.1									3
												4
L35N 0	1	23	.1									5
0+50	1	8	.1									6
1	1	6	.6									7
1+50	1	31	.1									8
2	1	13	.2									9
2+50	1	34	.1									10
3	1	17	.4									11
3+50	1	17	.3									12
4	1	21	.1									13
4+50	4	15	.1									14
5	3	25	.2									15
5+50	1	22	.3									16
6	1	9	.1									17
6+50	1	27	.2									18
7	3	11	.1									19
7+50	1	7	.3									20
8	1	25	.3									21
8+50	1	22	.2									22
9	1	15	.1									23
9+50	1	16	.4									24
10	1	25	.1									25
10+50	1	67	.2									26
11	1	38	.1									27
11+50	1	26	.1									28
12	1	15	.4									29
12+50	1	18	.2									30
13	1	120	.1									31
13+50	1	26	.4									32
14	S	11	.2									33
14+50	1	7	.1									34
												35
15+50	1	25	.1									36
16	1	12	.3									37
16+50	1	28	.4									38
17	1	12	.4									39
L35N 17+50 W	1	12	.5									40

All reports are the confidential property of clients  
All results are in PPM.

DIGESTION:.....

DETERMINATION:.....

DATE SAMPLES RECEIVED \_\_\_\_\_

DATE REPORTS MAILED \_\_\_\_\_

ASSAYER Dean Toy

DEAN TOYE, B.Sc.  
CHIEF CHEMIST  
CERTIFIED B.C. ASSAYER



To: Teck Explorations Ltd.,

ACME ANALYTICAL LABORATORIES LTD.

Assaying & Trace Analysis

852 E. Hastings St., Vancouver, B. C. V6A 1R6

phone:253 - 3158

File No. 80-1419

Type of Samples

Disposition

GEOCHEMICAL ASSAY CERTIFICATE

Project # 1259 'Minerva'

SAMPLE No.	Mo	Cu	Ag									
L35N 18 W	3	23	.3									1
18+50	3	28	.1									2
19	2	19	.1									3
19+50	1	21	.1									4
20	3	31	.1									5
20+50	3	5	.1									6
21	4	13	.1									7
21+50	1	7	.1									8
22	1	20	.1									9
22+50	3	23	.1									10
23	1	9	.1									11
23+50	1	13	.1									12
24	1	22	.1									13
24+50	1	12	.1									14
L35N 25 W	1	60	.1									15
												16
BL15W 0+50 S	1	1	.2									17
1	3	22	.1									18
1+50	1	2	.1									19
2	6	210	.7									20
2+50	1	9	.4									21
3	2	10	.2									22
3+50	4	2	.1									23
4	5	100	.6									24
4+50	4	40	.5									25
5	3	49	1.3									26
5+50	1	2	.3									27
6	1	2	.1									28
6+50	1	3	.1									29
7	1	12	.1									30
7+50	1	2	.1									31
8	1	6	.1									32
8+50	2	7	.1									33
9	1	8	.1									34
9+50	1	5	.1									35
10	1	3	.1									36
10+50	1	6	.1									37
11	1	4	.1									38
BL15W 11+50 S	1	23	.1									39
												40

All reports are the confidential property of clients  
All results are in PPM.

DIGESTION:.....

DETERMINATION:.....

DATE SAMPLES RECEIVED

DATE REPORTS MAILED

ASSAYER

DEAN TOYE, B.Sc.  
CHIEF CHEMIST  
CERTIFIED B.C. ASSAYER





To: Teck Explorations Ltd.,

ACME ANALYTICAL LABORATORIES LTD.

Assaying & Trace Analysis

852 E. Hastings St., Vancouver, B. C. V6A 1R6

phone: 253 - 3158

File No. 80-1419

Type of Samples \_\_\_\_\_

Disposition \_\_\_\_\_

### GEOCHEMICAL ASSAY CERTIFICATE

Project # 1259 'Minerva'

SAMPLE No.	Mo	Cu	Ag											
BL15W 12 S	1	5	.1											1
12+50	1	4	.3											2
13	1	4	.1											3
13+50	1	4	.1											4
14	1	2	.1											5
14+50	3	42	.4											6
15	3	15	.5											7
15+50	1	51	.1											8
16	1	11	.1											9
16+50	1	1	.1											10
17	1	1	.1											11
17+50	1	1	.1											12
18	1	1	.1											13
18+50	2	5	.1											14
19	3	6	.1											15
19+50	1	1	.1											16
20	1	1	.1											17
20+50	1	3	.1											18
21	1	5	.1											19
21+50	1	2	.1											20
22	1	1	.1											21
22+50	1	2	.1											22
23	1	2	.1											23
23+50	1	4	.1											24
24	3	10	.1											25
24+50	1	1	.1											26
25	1	1	.1											27
25+50	1	4	.1											28
26	1	1	.1											29
26+50	1	1	.1											30
27	1	1	.1											31
27+50	1	8	.1											32
28	1	1	.1											33
28+50	1	2	.1											34
29	1	3	.1											35
29+50	1	1	.1											36
BL15W 30 S	1	1	.1											37
														38
														39
														40

All reports are the confidential property of clients  
All results are in PPM.

DIGESTION:.....

DETERMINATION:.....

DATE SAMPLES RECEIVED \_\_\_\_\_

DATE REPORTS MAILED \_\_\_\_\_

ASSAYER Dean Toye

DEAN TOYE, B.Sc.  
CHIEF CHEMIST  
CERTIFIED B.C. ASSAYER



To: Teck Explorations Ltd.,

ACME ANALYTICAL LABORATORIES LTD.

Assaying & Trace Analysis

852 E. Hastings St., Vancouver, B. C. V6A 1R6

phone: 253 - 3158

File No. 80-1419

Type of Samples

Disposition

### GEOCHEMICAL ASSAY CERTIFICATE

Project # 1259 'Minerva'

51

SAMPLE No.	Mo	Cu	Ag																		
L30S 15+50 W	1	10	.1																		1
16	1	4	.4																		2
16+50	1	7	.2																		3
17	1	3	.1																		4
17+50	1	3	.3																		5
18	1	5	.2																		6
18+50	1	5	.3																		7
19	1	4	.1																		8
19+50	1	2	.1																		9
20	1	3	.1																		10
20+50	1	18	.4																		11
21	1	3	.1																		12
21+50	1	4	.1																		13
22	1	2	.1																		14
22+50	1	4	.4																		15
23	1	3	.2																		16
23+50	1	3	.2																		17
24	1	20	.3																		18
24+50	1	4	.1																		19
L30S 25 W	1	17	.4																		20
																					21
																					22
																					23
																					24
																					25
																					26
																					27
																					28
																					29
																					30
																					31
																					32
																					33
																					34
																					35
																					36
																					37
																					38
																					39
																					40

All reports are the confidential property of clients  
All results are in PPM.

DIGESTION:.....

DETERMINATION:.....

DATE SAMPLES RECEIVED

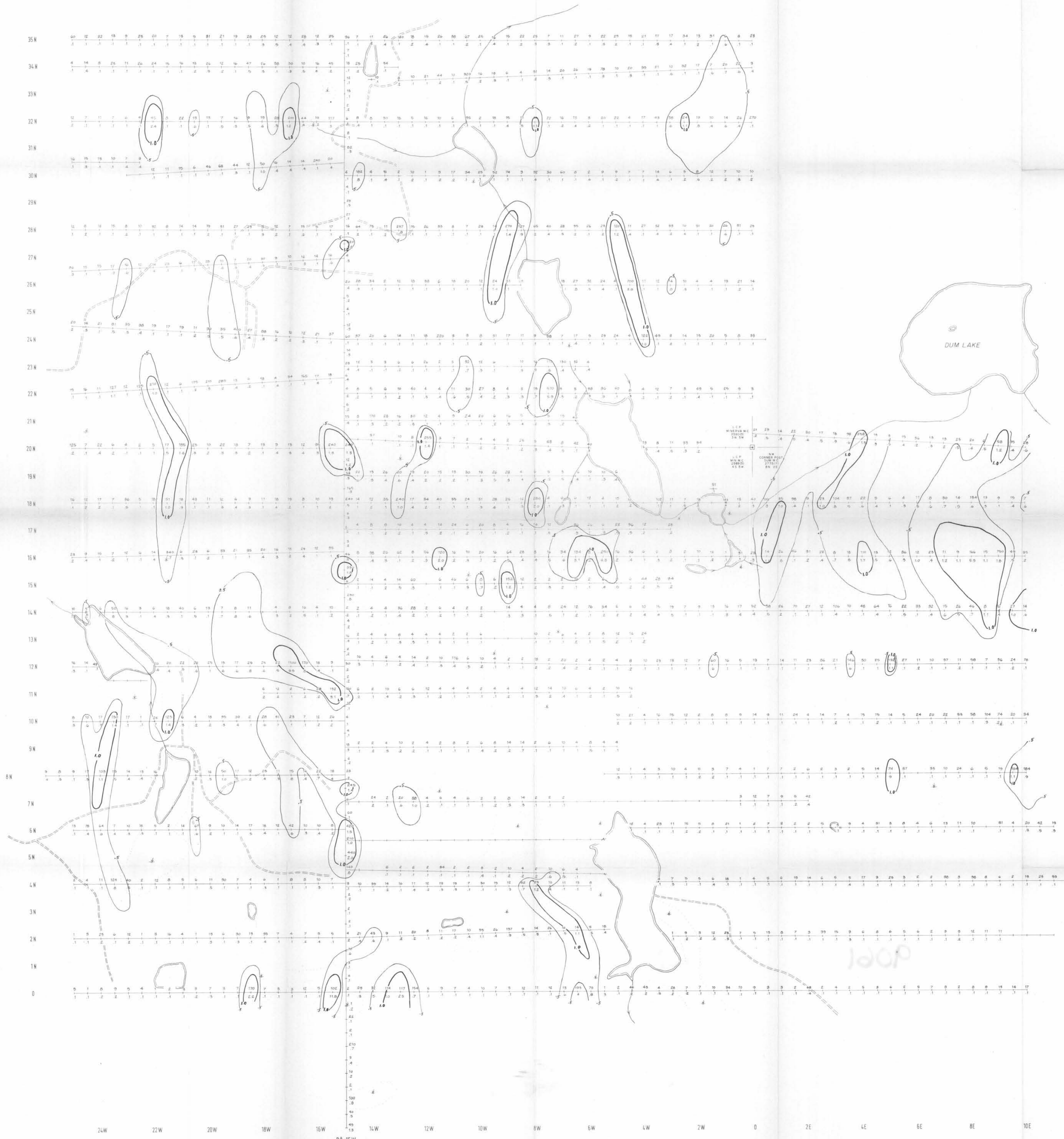
DATE REPORTS MAILED

*Nov 24, 1980*

ASSAYER

*D. Joyce*

DEAN TOYE, B.Sc.  
CHIEF CHEMIST  
CERTIFIED B.C. ASSAYER



MINERAL RESOURCES BRANCH  
ASSESSMENT REPORT  
**9061**  
NO.

EXPLANATION  
 \* Cu  
 \* Ag  
 ALL RESULTS ARE IN PPM

Ag CONTOURED @ 0.5 ppm AND 1.0 ppm

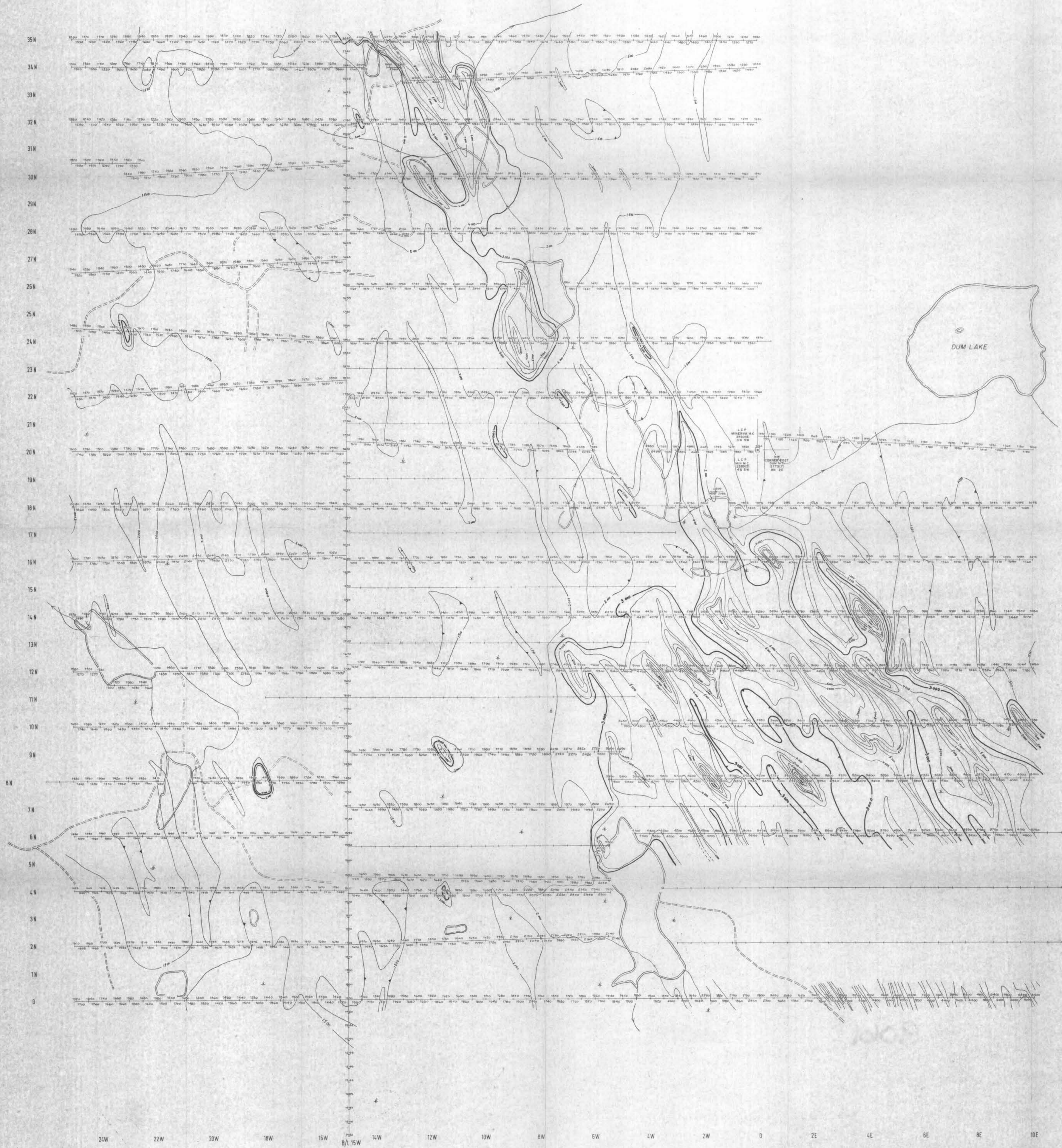
TECK EXPLORATIONS LTD.  
VANCOUVER, B.C.

MINERVA PROPERTY  
KAMLOOPS M.D., B.C.

SOIL - GEOCHEMICAL MAP  
Cu - Ag

0 100 200 300 400 500 m  
1:50000

KTS: 927-BW JOB #: 1259 DRAWN BY: S.A. DATE: JAN 1981 REVISION:

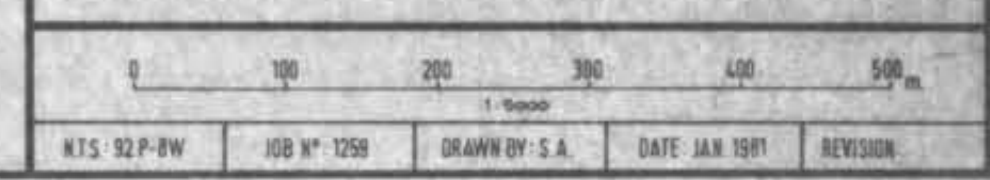


MINERAL RESOURCES BRANCH  
ASSESSMENT REPORT  
**9061**  
NO.

CONTOUR INTERVALS  
@ 1,000 y above 2,000 y  
@ 500 y below 2,000 y

TECK EXPLORATIONS LTD.  
VANCOUVER, B.C.

MINERVA PROPERTY  
KAMLOOPS M.D., B.C.  
MAGNETOMETER SURVEY



INSTRUMENT USED:  
SCINTREX MF-2 MAGNETOMETER NO. 002215