

DIAMOND DRILLING REPORT

on the

WEST SUPPLEMENTARY GROUP OF CLAIMS

Tam 1

Tam 2

Lewlu

October Fraction

Nelson Mining Division

N.T.S. 82 F 6E

49° 17' N. Latitude - 117° 12' W. Longitude

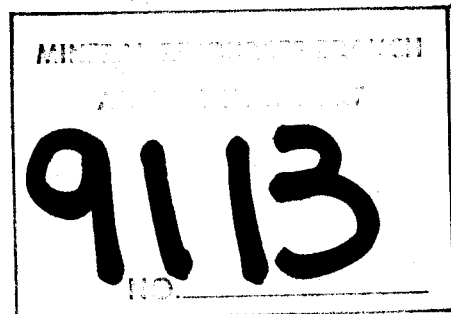
in the Ymir, B.C. Mining Camp

Owned and Operated by
Greenwood Explorations Ltd.,
30 East 6th Avenue,
Vancouver, B.C.

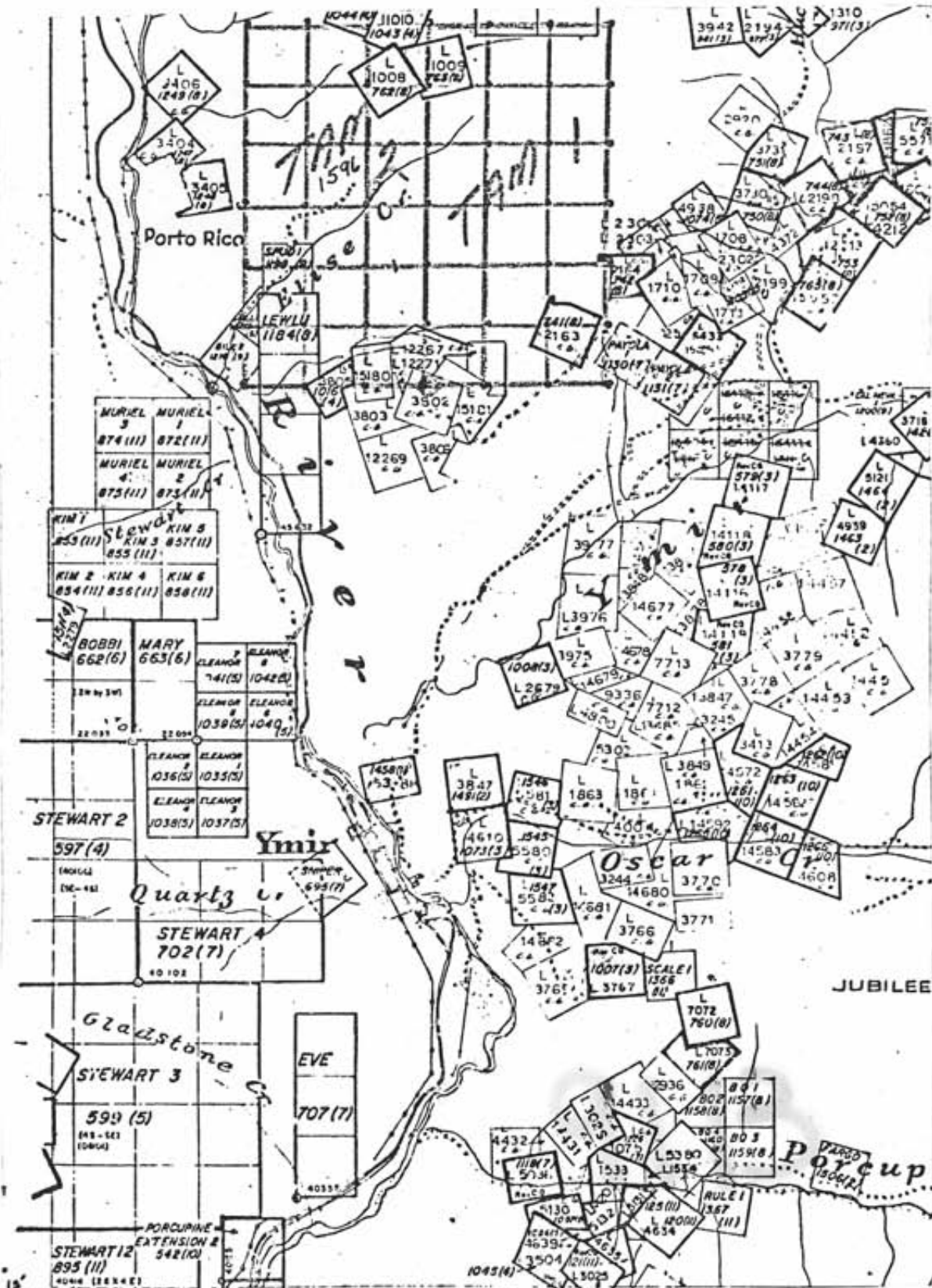
by

Alex Burton, P. Eng.
Burton Consulting Inc.,
810-626 West Pender St. B.C.
V6B 1V9

APRIL, 1981



BURTON CONSULTING INC.



117* 15'

49* 15'

1: 50,000

Nelson Mining Division
82 F 6 E



TABLE OF CONTENTS

	<u>PAGE</u>
INTRODUCTION	1
SUMMARY OF WORK DONE	1
RESULTS	2
COST STATEMENT	
STATEMENT OF QUALIFICATIONS	

MAPS

INDEX MAP	Scale 1:50,000
PLAN	Scale 1: 1,000
CROSS SECTION NUMBER 21	Scale 1: 500
25	
27	
28	
29	
DIAMOND DRILL LOGS T-80-1	
	2
	3
	4
	5
	6
	7
	8
	9
	10
	11
	12
	13
	14
	15
	16
	17
	18

INTRODUCTION

The Tamarac Crown Grant Claims plus the located claims are roughly one mile north of the town of Ymir, B.C. There is a road to the underground workings and most of the drill sites on the property.

The property was discovered before the turn of the century and was explored for gold at that time, then again in the thirties, and now by Greenwood. There have been some small shipments of 1.5 ounces of gold per ton ore to the smelters, and two major attempts in the past to bring the property into production. In 1980 Greenwood explored the property with a diamond drill.

SUMMARY OF WORK DONE

Eighteen holes were drilled using BQ Wire-line diamond drill equipment. A total of 1086.0 metres were drilled, with the longest hole 112.8 metres. Hole angles were -90, -70, or -60 degrees.

Compass, hip chain and barometer were used in laying out the property grid and in surveying drill hole collars. A surface plan map was prepared, cross sections drawn and the drill hole logs plotted

BURTON CONSULTING INC.

on the sections. Core samples were taken at geological intervals by splitting the core. Half the split core was left in the boxes at the drill collar sites, the half for assay was shipped to a Vancouver assay lab. A grouping of twenty-five selected samples were later assayed from the same pulps by a different Vancouver assay lab with excellent correlation. Check assays are plotted on the drill logs. Both the pulps and rejects are stored with Greenwood.

RESULTS

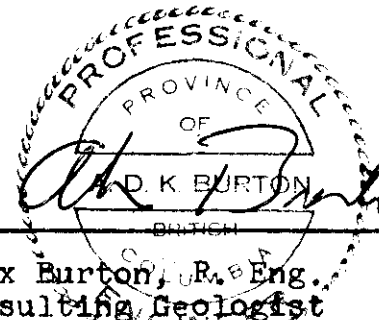
Diamond drilling tested and outlined the Tamarac vein and initiated testing on several other veins. Holes 11, 12, 13 and 18 were drilled to the east of the main Tamarac vein structure. The mineralized section in the Tamarac vein consists of a central core of quartz plus a lesser amount of fault gouge carrying pyrite and arsenopyrite with values in gold. Native gold has been reported but has not been verified. Wall rocks on both the hanging wall and footwall are altered with pyrite and traces of arsenopyrite and carry decreasing amounts of gold away from the central vein. The vein occurs in a host rock mapped as

feldspar porphyry, which may be an intrusive phase of the Rossland Volcanics. The other major rock type on the property, (although a minor ore carrier), is the Augite porphyrite. In several outcrops the extrusive nature of the augite porphyrite can be seen. Lamprophyre dykes cut the gold veins and a fine grained green dyke was noted in hole T80 - 17.

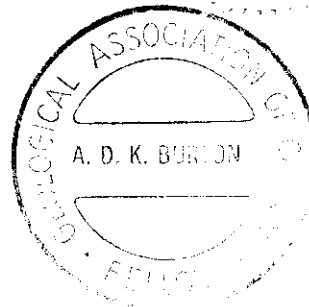
STATEMENT OF QUALIFICATIONS

I, Alex Burton, do certify that:

- 1) I am a graduate Geologist from the University of British Columbia and hold a B.A. degree in geology.
- 2) I am a registered Professional Engineer with the Association of Professional Engineers of British Columbia.
- 3) I am a Fellow of the Geological Association of Canada, a member of the A.E.G. and the C.I.M.M.
- 4) Since 1954 I have been engaged in mineral exploration work with major mining companies and as an independent consultant.
- 5) The information in this Assessment Diamond Drilling Report came from my personally supervising the diamond drilling on the Tamarac Property.


PROFESSIONAL
PROVINCE
OF
D. K. BURTON
BRITISH COLUMBIA
Alex Burton, R. Eng.
Consulting Geologist

APRIL, 1981



BURTON CONSULTING INC.

COST STATEMENT FOR 1980 DIAMOND DRILLING

on the

TAMARAC PROPERTY

for

GREENWOOD EXPLORATIONS LTD.

A. Burton fees	\$ 10,730.00
A. Burton expenses	1,162.73
Travel	1,957.89
Wages and expenses	16,909.29
Assays	2,658.90
Equipment rental	498.00
Truck rental	5,419.60
Miscellaneous expenses	9,401.53
Telephone	566.81
Diamond drill	101,650.00
	<hr/>
	\$150,954.75
	<hr/> <hr/>

Alex Burton, P. Eng.
Burton Consulting Inc.,
810-626 West Pender Street,
Vancouver, B.C. V6B 1V9

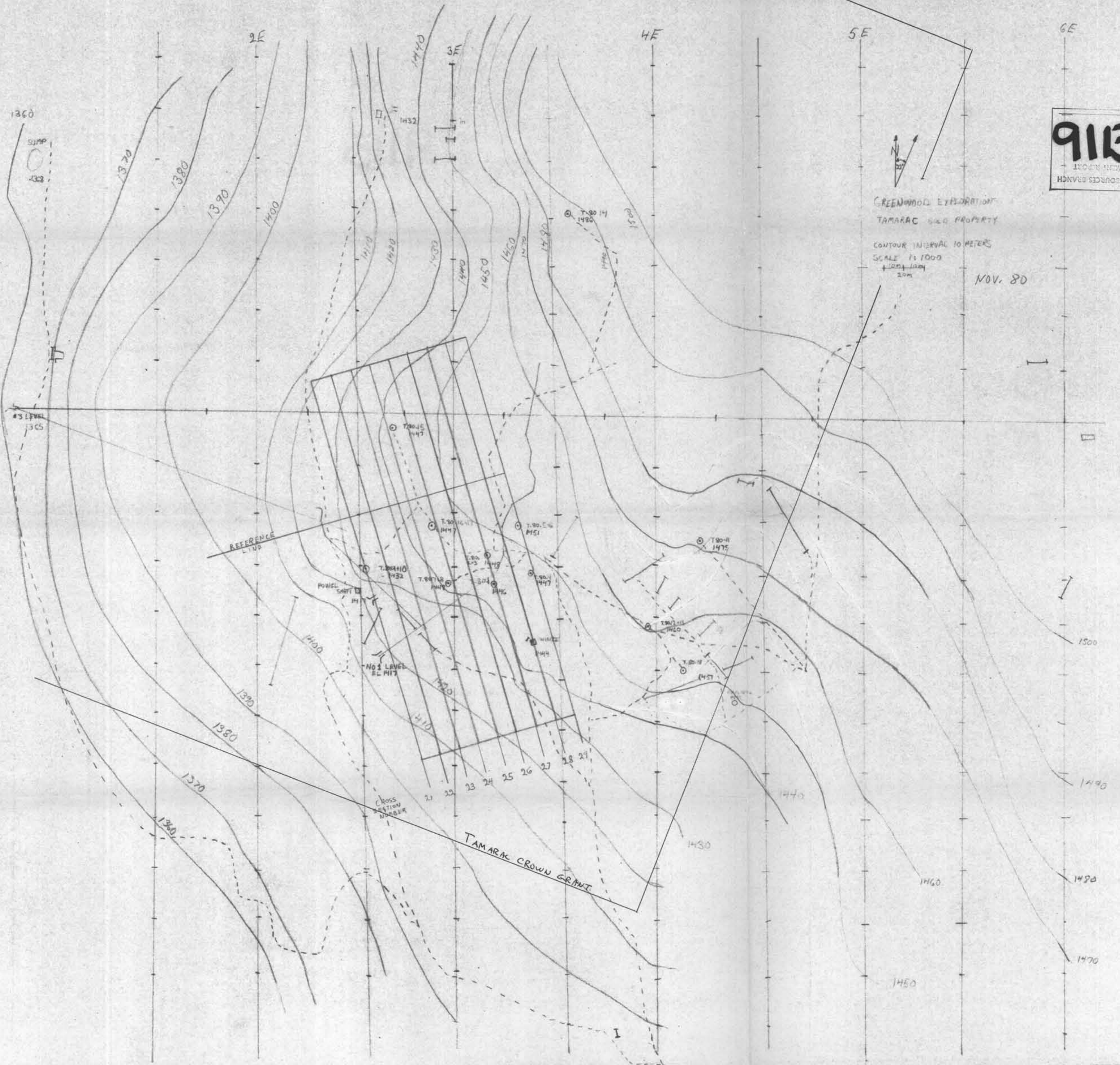
BURTON CONSULTING INC.

913
MINERAL RESOURCES BRANCH
ASSESSMENT REPORT

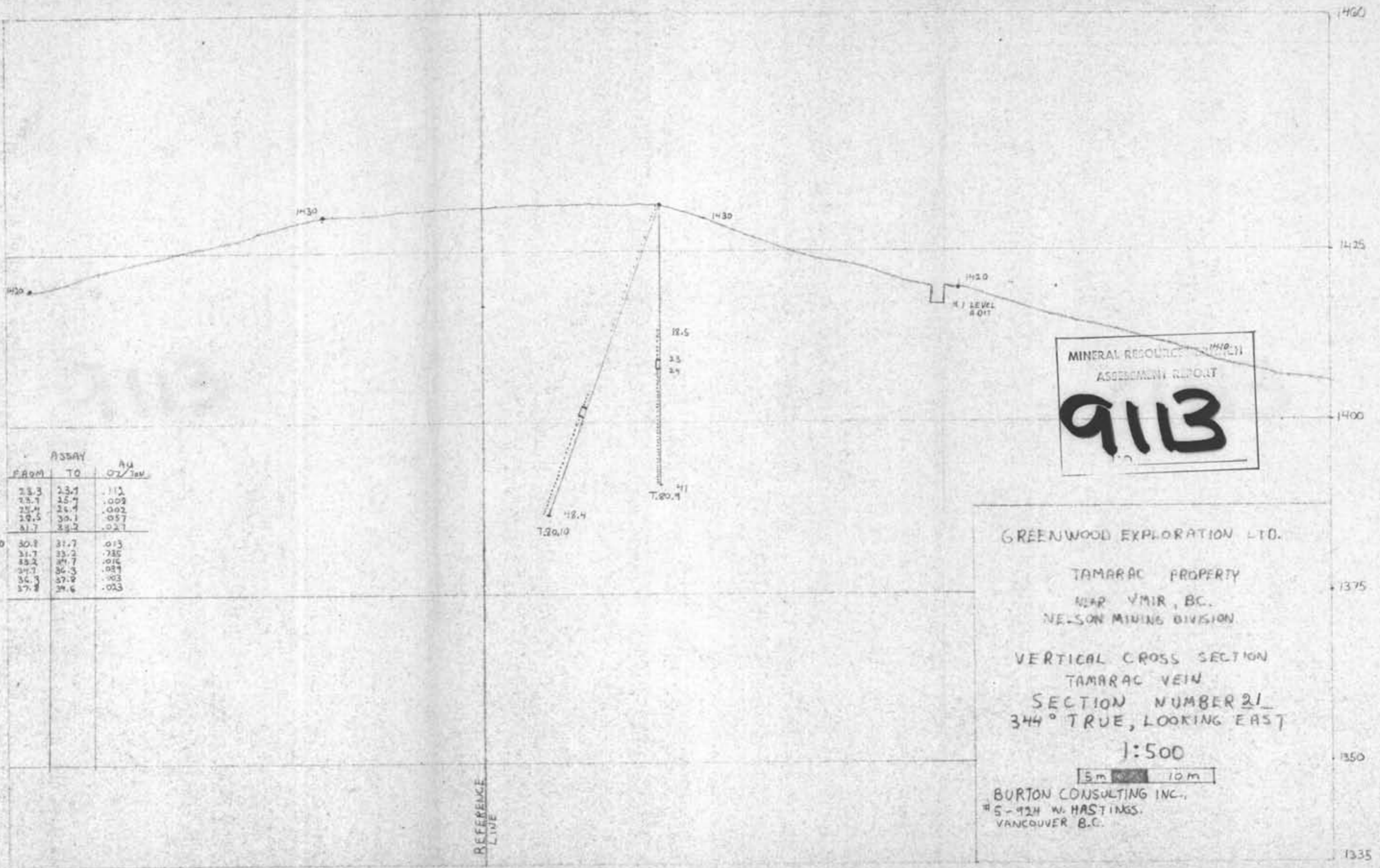
GREENWOOD EXPLORATION
TAMARAC GOLD PROPERTY

CONTOUR INTERVAL 10 METERS
SCALE 1:1000
1000 1000
200

NOV. 80



LOCATED
ROAD
TAMARAC
TAMARAC



MINERAL RESOURCES ACT (MRA)
ASSESSMENT REPORT
9113

GREENWOOD EXPLORATION LTD.

TAMARAC PROPERTY
NEAR VMR, BC.
NELSON MINING DIVISION

VERTICAL CROSS SECTION
TAMARAC VEIN
SECTION NUMBER 21
344° TRUE, LOOKING EAST

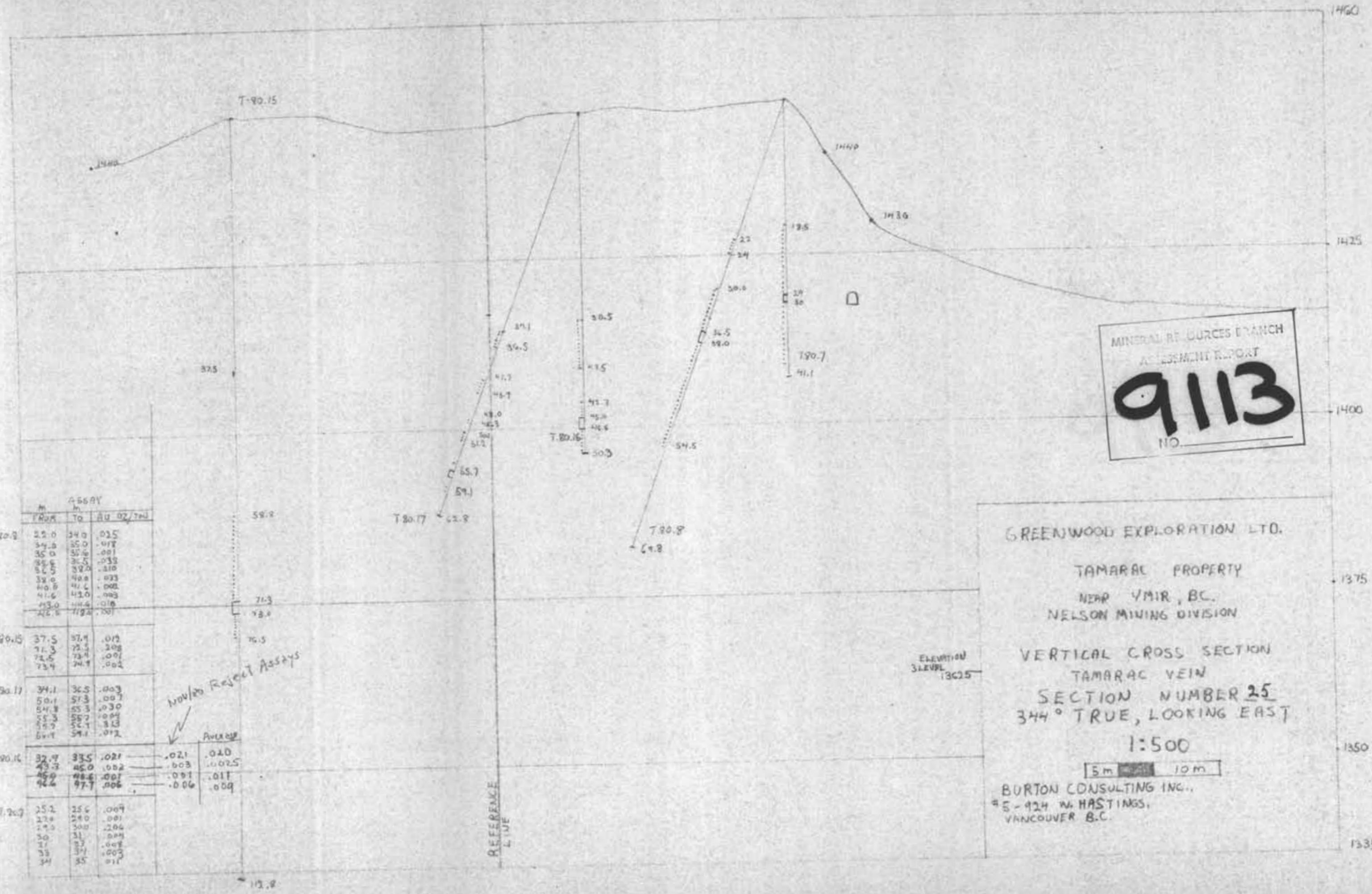
1:500

5m 10m

BURTON CONSULTING INC.,
5-924 W. HASTINGS,
VANCOUVER B.C.

	ASSAY		Au G/Ton
	FROM	TO	
780.1	23.3	23.1	.112
	23.1	25.7	.009
	25.4	26.4	.002
	29.5	30.1	.057
	31.7	33.2	.027
790.10	30.2	31.7	.013
	31.7	33.2	.785
	33.2	34.7	.016
	34.7	36.3	.029
	36.3	37.9	.03
	37.9	39.6	.023

REFERENCE
LINE



MINERAL RESOURCES BRANCH
ASSESSMENT REPORT
9113
NO.

GREENWOOD EXPLORATION LTD.
TAMARAC PROPERTY
NEAR VMIR, B.C.
NELSON MINING DIVISION

VERTICAL CROSS SECTION
TAMARAC VEIN
SECTION NUMBER 25
344° TRUE, LOOKING EAST
1:500

BURTON CONSULTING INC.,
#5-424 W. HASTINGS,
VANCOUVER B.C.

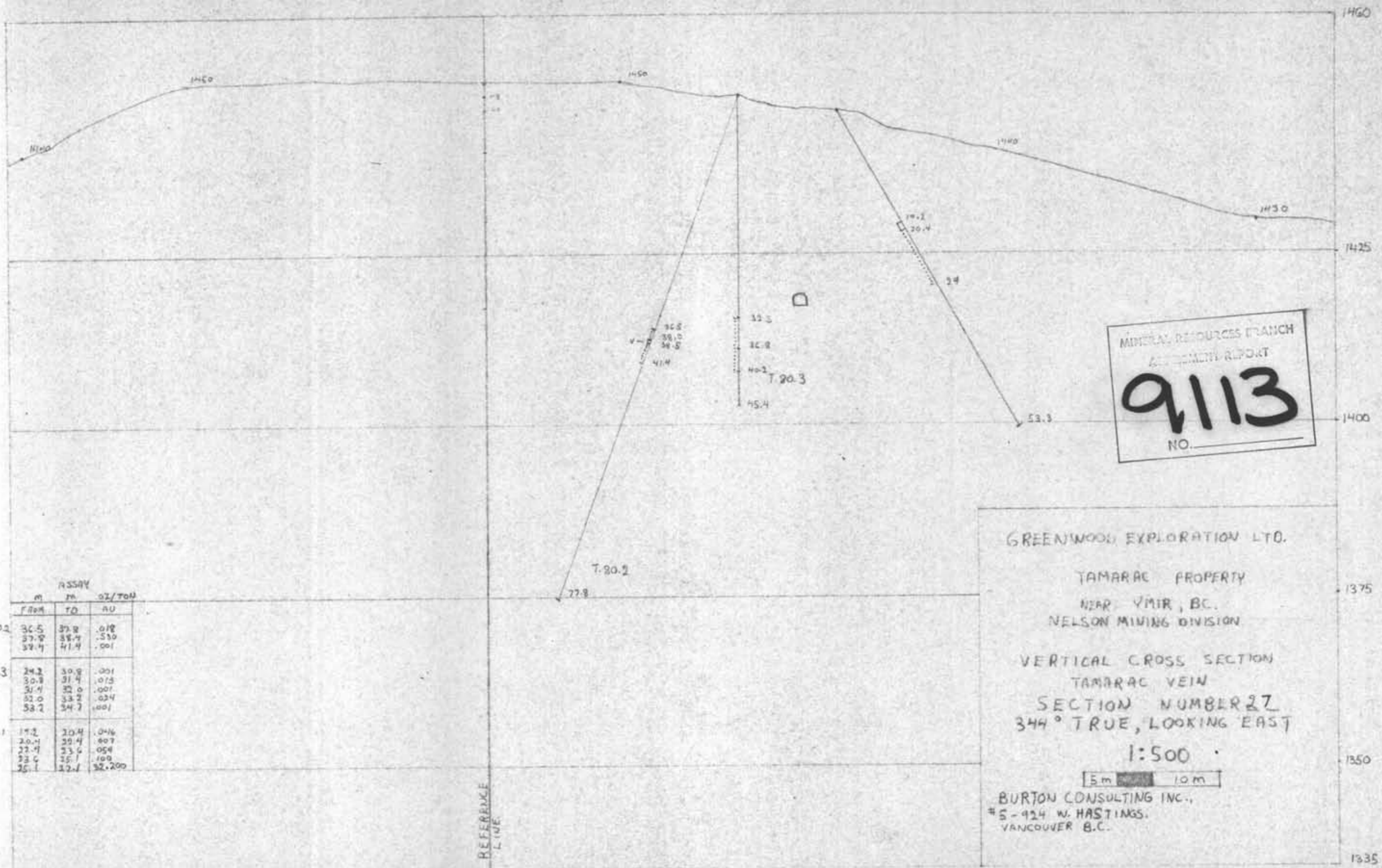
T. No.	ASSAY		
	From	To	AU OZ/TON
T. 90.3	22.0	34.0	.035
	34.0	35.0	.077
	35.0	35.5	.081
	35.5	35.5	.032
	35.5	39.0	.110
	39.0	40.8	.023
	40.8	41.1	.002
	41.1	43.0	.003
	43.0	44.4	.016
	44.4	46.4	.001
T. 90.5	37.5	37.4	.012
	37.4	37.5	.008
	37.5	37.4	.001
	37.4	34.9	.002
T. 90.11	34.1	36.5	.003
	36.5	37.3	.007
	37.3	35.3	.030
	35.3	35.7	.004
	35.7	32.1	.013
	32.1	34.1	.012
T. 90.16	32.9	33.5	.021
	33.5	45.0	.002
	45.0	48.4	.007
	48.4	47.7	.006
T. 90.3	25.1	25.6	.009
	25.6	24.0	.001
	24.0	30.0	.004
	30.0	31	.005
	31	37	.002
	37	37	.003
	37	35	.011

None/No Reject Assays

Average	
.021	.010
.003	.0025
.007	.011
.006	.009

ELEVATION
32 LEVEL
13625

REFERENCE
LINE



MINERAL RESOURCES BRANCH
 ASSESSMENT REPORT
9113
 NO. _____

GREENWOOD EXPLORATION LTD.
 TAMARAC PROPERTY
 NEAR VMIR, BC.
 NELSON MINING DIVISION

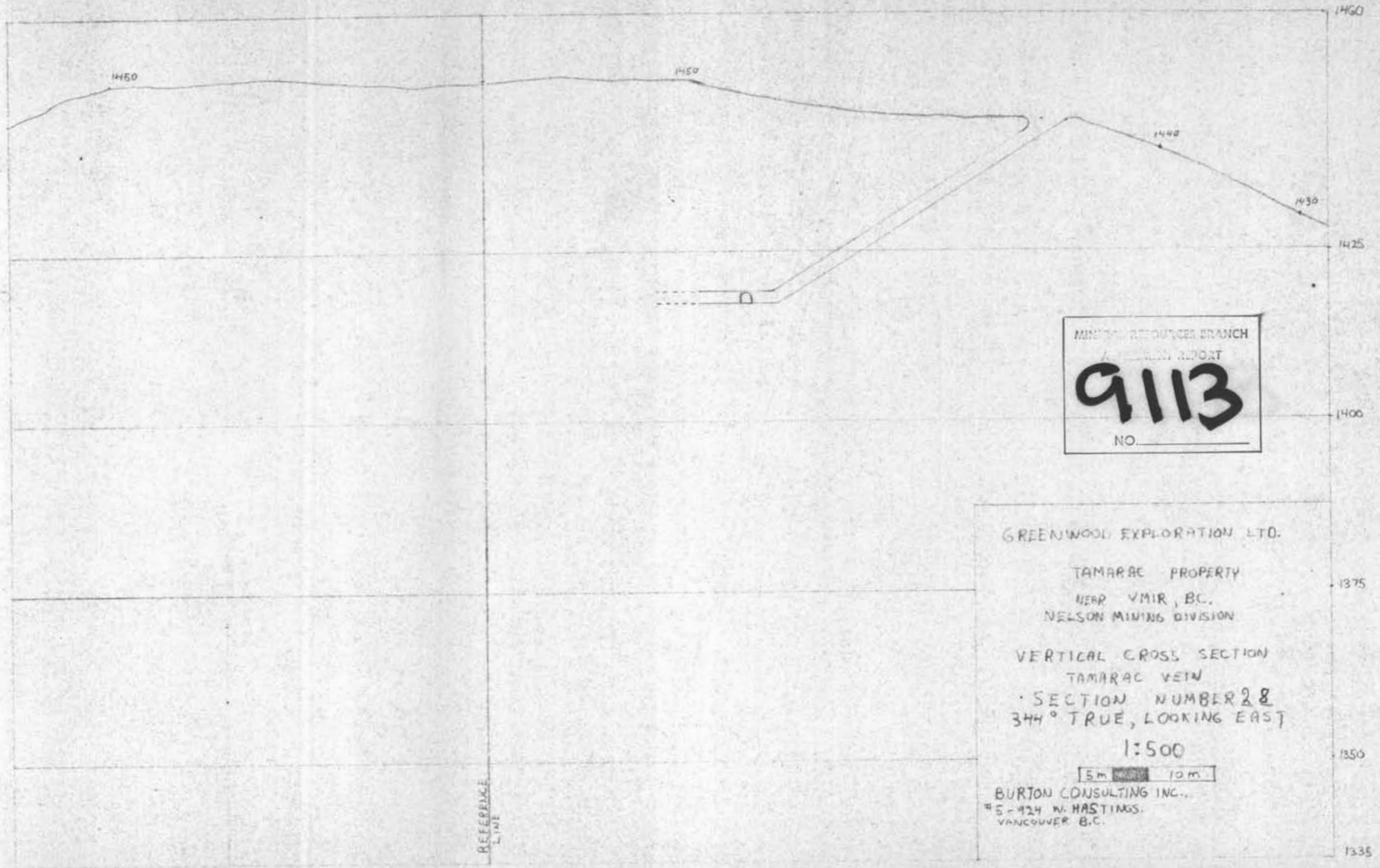
VERTICAL CROSS SECTION
 TAMARAC VEIN
 SECTION NUMBER 27
 344° TRUE, LOOKING EAST

1:500

5m 10m

BURTON CONSULTING INC.,
 #5-924 W. HASTINGS,
 VANCOUVER B.C.

	ASSAY		
	m	IN	oz/Ton
T20.2	From	To	AU
	30.5	37.8	.018
	37.8	37.4	.510
	37.4	41.4	.001
T20.3	24.2	30.8	.001
	30.8	31.4	.013
	31.4	32.0	.001
	32.0	33.2	.034
	33.2	34.7	.001
	34.7		
T20.1	17.2	20.4	.046
	20.4	22.4	.07
	22.4	23.6	.054
	23.6	25.1	.09
	25.1	32.7	0.200



MINING RESOURCES BRANCH
 TECHNICAL REPORT
9113
 NO. _____

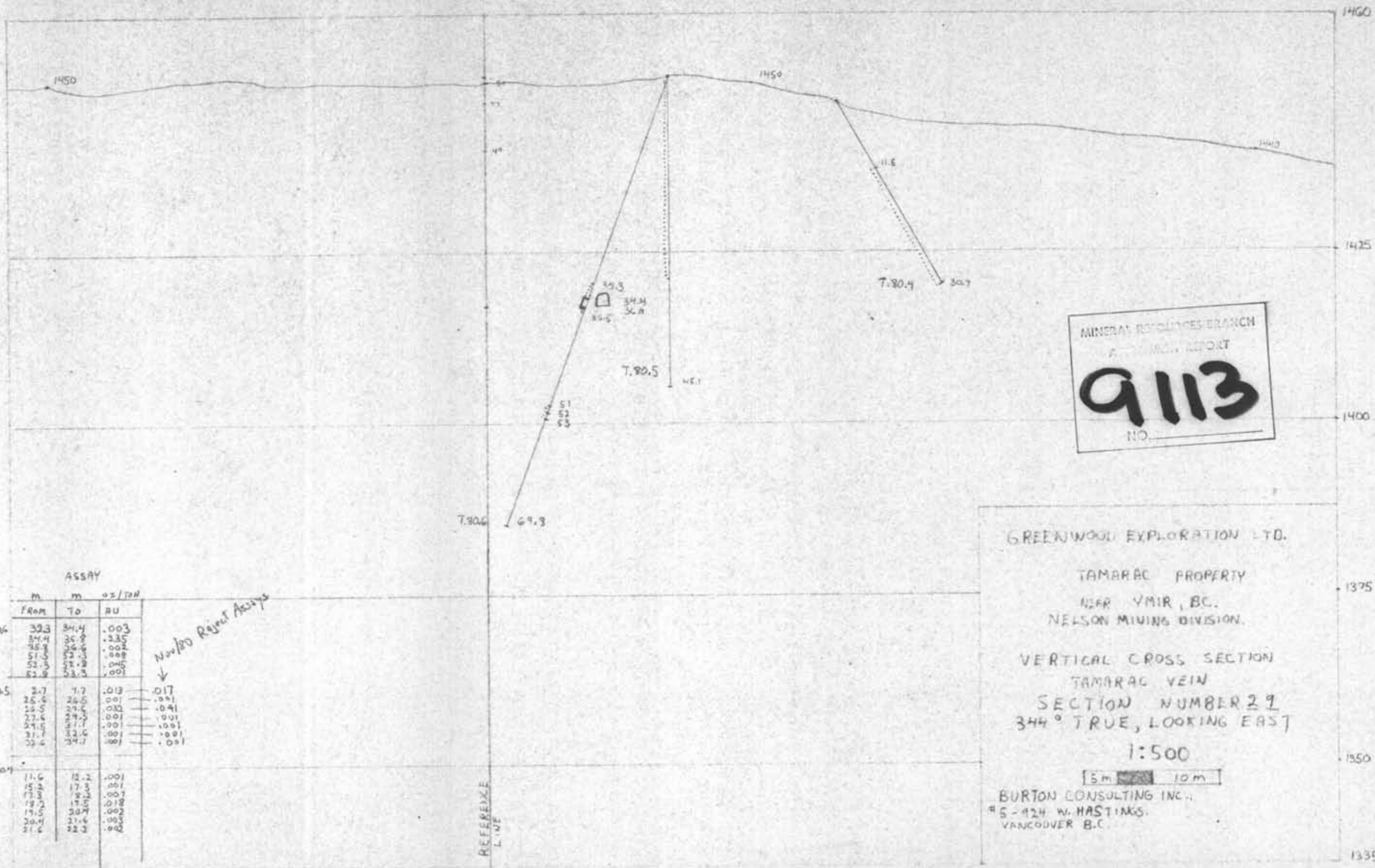
GREENWOOD EXPLORATION LTD.
 TAMARAC PROPERTY
 NEAR VMIR, B.C.
 NELSON MINING DIVISION

VERTICAL CROSS SECTION
 TAMARAC VEIN
 SECTION NUMBER 28
 344° TRUE, LOOKING EAST

1:500

5m 10m

BURTON CONSULTING INC.,
 5-424 W. HASTINGS,
 VANCOUVER B.C.



MINERAL RESOURCES BRANCH
 A MINING REPORT
9113
 NO. _____

GREENWOOD EXPLORATION LTD.
 TAMARAC PROPERTY
 NEAR VMIR, B.C.
 NELSON MINING DIVISION.

VERTICAL CROSS SECTION
 TAMARAC VEIN
 SECTION NUMBER 29
 344° TRUE, LOOKING EAST
 1:500

5m 10m

BURTON CONSULTING INC.
 5-124 W. HASTINGS
 VANCOUVER B.C.

ASSAY

	m	m	oz/TON
	From	To	RU
7.906	32.3	34.4	.003
	34.4	35.0	.235
	35.3	36.6	.002
	51.5	52.5	.002
	52.5	53.2	.045
	53.6	53.3	.001
7.905	2.7	1.7	.013
	26.6	24.5	.001
	24.5	22.5	.032
	22.6	24.5	.001
	24.5	31.1	.001
	31.1	32.6	.001
	32.6	34.1	.001
7.904	11.6	12.2	.001
	15.2	17.3	.001
	17.3	19.5	.007
	19.5	19.5	.018
	19.5	30.7	.002
	20.4	31.6	.003
	31.6	32.3	.002

Number Reject Assays

REFERENCE
 LINE

DIAMOND DRILL RECORD

CLAIM NO.

PROPERTY Tamarac

HOLE NO. T-80-1

LATITUDE 3+19E 82.5S

ELEVATION 1446 M

BEARING 164's

DEPTH 53.3m

STARTED

COMPLETED

DEPARTURE

SECTION 27

DIP -60°

DRILLED BY

LOGGED BY

DEPTH Feet From M	To M	FORMATION	SAMPLE NO.	FROM M	TO M	WIDTH M	ASSAYS		
								AI	
18.3	19.2	Feldspar Porphyry							
		Core Ground							
19.2	20.4	Vein		19.2	20.4	1.2		.046	
20.4	27.1	Veinletts		20.4	22.4	2.0		.007	
				22.4	23.6	1.2	4:4m @:030	.054	
				23.6	25.1	1.5		.100	
				25.1	27.1	2.0	3.5m @0.614	6.650 32.200	called 1.00oz
									7.9m @0.289
27.1	29.2	Feldspar Porphyry							
		Altered							
29.2	53.3	Feldspar Porphyry							
		Fresh							
	53.3	End							

DIAMOND DRILL RECORD

CLAIM NO.

PROPERTY Tamarac

HOLE NO. T.80.8

LATITUDE 2+97E 84S

ELEVATION 1448

BEARING 344°N

DEPTH 69.8

STARTED

COMPLETED Page 1 of 2

DEPARTURE

SECTION 25

DIP -70°

DRILLED BY

LOGGED BY

DEPTH FEET From M	To M	FORMATION	SAMPLE NO.	FROM M	TO M	WIDTH M	ASSAYS		
								AU	
18.2	34.4	Feldspar Porphyry Blotchy Alteration							
		Small Vein - 18.2							
		- 23.2		22.2	24.0	1.8		.025	
		Bull Quartz - 25.9							
		Rusty Vein 29.9							
		2" Vein 30.3							
		Quartz Vein 31.7							
		Small Veins 33.1							
		- 33.3							
34.4	35.0	Veining & Alteration		34.4	35.0	0.6		.018	
35.0	35.6	Feldspar Porphyry Altered		35.0	35.6	0.6		.001	
35.6	36.5	Mineralization & Alteration		35.6	36.5	0.9		.038	
36.5	38.1	Vein Massive Sulfides		36.5	38.1	1.6		.310	4.4m @ 135 2.5m @ 208
38.1	40.0	Mineralization & Alteration		38.1	40.0	1.9		.033	
40.0	41.6	Minor Mineralization & Alteration		40.0	41.6	1.6		.002	
41.6	42.7	Moderate Mineralization & Alteration		41.6	42.7	1.1		.003	
42.7	44.6	Feldspar Porphyry Altered		42.7	44.6	1.9		.010	
44.6	47.8	" " Blotchy Alteration							
		Cont'd next page		46.6	47.8	1.2		.001	

DIAMOND DRILL RECORD

CLAIM NO.

PROPERTY Tamarac

HOLE NO. T-80-12

LATITUDE 3 + 96E 1 + 04S

ELEVATION 1460m

BEARING 35°N

DEPTH 63-1m

STARTED

COMPLETED

DEPARTURE

SECTION

DIP

DRILLED BY

LOGGED BY Page 1 of 2

DEPTH FEET FROM M	To M	FORMATION		SAMPLE NO.	FROM M	TO M	WIDTH M	ASSAYS		
									AI	
1.2	3.0	Feldspar Porphyry	Weathered							
3.0	8.1	"	"							
8.1	8.3	"	"		8.1	8.3	0.2		.007	
8.3	14.0	"	"		12.4	14.0	1.6		.016	
14.0	15.8	"	"		14.0	15.8	1.8		.007	
15.8	21.3	"	"		15.8	17.1	1.3		.020	
					17.1	18.3	1.2		.003	
21.3	32.9	"	"							
32.9	47.5	"	"							
					32.9	35.0	2.1		.022	
					35.0	36.6	1.6		.003	
					36.6	37.4	0.8		.002	
					37.4	37.8	0.4		.004	
					37.8	38.1	0.3		.071	
					38.1	39.3	1.2		.008	
					39.3	40.5	1.2		.027	
					41.6	42.7	1.1		.153	
					42.7	44.2	1.5		.004	

CLAIM NO.

DIAMOND DRILL RECORD

PROPERTY Tamarac

HOLE NO. T.80.13

LATITUDE 3 + 96E 1+04S

ELEVATION 1460M

BEARING 35°N

DEPTH 67.0M

STARTED

COMPLETED

DEPARTURE

SECTION

DIP -50°

DRILLED BY

LOGGED BY

DEPTH FEET From M	To M	FORMATION	SAMPLE NO.	FROM M	TO M	WIDTH M	ASSAYS		
								AU	
1.2	5.5	Feldspar Porphyry - Fine Grain Weathered & Broken							
5.5	16.7	" " Fine Grained							
16.7	37.8	" " Coarse Grained							
		1/2 Rusty Veins 20° to Core - 35.9 - 36.5							
	37.8	Contact 60° to Core							
37.8	39.6	Dyke Fine Grained - Contact @ 39.6 - (45° to Core)							
39.6	41.1	Feldspar Porphyry - Coarse Grained - Bleached Some Sulphides		39.6	41.1	1.5		.003	
41.1	45.7	Feldspar Porphyry - Coarse Grained Bleached - Some Sulphides							
	45.7	Contact 35° to Core							
45.7	51.0	Feldspar Porphyry Fine Grained		45.7	48.0	2.3		.002	
				48.0	49.8	1.8		.001	
				49.8	51.0	1.2		.004	
				51.0	52.6	1.6		.002	
51.0	59.6	Feldspar Porphyry Coarse Grained							
59.6	64.3	" "							
64.3	65.5	Biotite Lamp							
65.5	67.0	Feldspar Porphyry							
	67.0	End							

DIAMOND DRILL RECORD

CLAIM NO. _____ PROPERTY Tamarac HOLE NO. 7.80.14
 LATITUDE 3 + 58E 1+00N ELEVATION 1486 BEARING 280° W DEPTH 91.4 STARTED _____ COMPLETED _____
 DEPARTMENT _____ SECTION _____ DIP -40° DRILLED BY _____ LOGGED BY Page 1 of 2

DEPTH FEET	To	M	FORMATION	SAMPLE NO.	FROM M	TO M	WIDTH M	ASSAYS		
									AU	
1.2	21.8		Feldspar Porphyry							
21.8	22.5		" " Blotchy		21.8	22.5	0.7		.001	
22.5	23.8		" " Minor Alteration		22.5	23.8	1.3		.002	
23.8	24.2		Vein Massive Sulphides		23.8	24.2	0.4		.648	
24.2	26.2		Feldspar Porphyry Alteration & Mineralization		24.2	26.2	2.0		.019	
26.2	31.4		" " Mineralized @ 28.9M							
31.4	32.3		" " Mineralized & Fractured		31.4	32.3	0.9		.117	
32.3	33.2		" " Mineralized		32.3	33.2	0.9		.037	
33.2	34.3		" " Weathered							
34.3	35.3		" " Alteration & Veins		34.3	35.3	1.0		.093	
35.3	43.6		" " Veinlett @ 40.2		38.7	39.0	0.3		.046	
43.6	44.0		" " Mineralized							
					43.6	44.0	0.4		.019	
44.0	57.9		Feldspar Porphyry							
57.9	59.4		" " Minor Mineralization		57.9	59.4	1.5		.003	
59.4	71.6		" " Blotchy							
					61.5	62.5	1.0		.029	
					65.5	67.0	1.5		.008	

CLAIM NO.

DIAMOND DRILL RECORD

PROPERTY Tamarac

HOLE NO. T.80.16

LATITUDE 2 + 86E 0+55.5S

ELEVATION 1447

BEARING 0

DEPTH 50.2

STARTED

COMPLETED

DEPARTURE

SECTION 25

DIP 90°

DRILLED BY

LOGGED BY

DEPTH FEET FROM M	To M	FORMATION		SAMPLE NO.	FROM M	TO M	WIDTH M	ASSAYS		
									AU	
1.2	22.3	Feldspar Porphyry	weathered							
			Small Quartz Veins - 6.6							
			- 12.5							
			-22.3							
22.3	28.3	Feldspar Porphyry	Fractured							
28.3	30.5	"	"							
30.5	32.9	"	"							
			Altered - 1/2 Veinlett @ 30.5							
32.9	33.5	Quartz Vein	Some Sulphides		32.9	33.5	0.6		.021	.019 .020
33.5	35.7	Feldspar Porphyry	Altered (113-117 4'drilled 6" core)							
35.7	37.5	"	"							
			Minor Alteration, Quartz v-left .35B							
37.5	42.7	"	"							Average
42.7	45.0	"	"		43.3	45.0	1.7			.0025
			Altered		42.7	45.0	2.3		.002	.003
45.0	46.6	Vein	Massive Sulphides		45.0	46.6	1.6			.011
					45.0	46.6	1.6		.001	.011
46.6	48.2	Feldspar Porphyry	Altered		46.6	47.7	1.1			
					46.6	48.2	1.6		.006	.012 .009
48.2	50.3	"	"							
			Bleached & Altered							Nov 1980 is
	50.3	End								4.4m @ .007oz Au
										OR 2.7m @ .010oz Au

