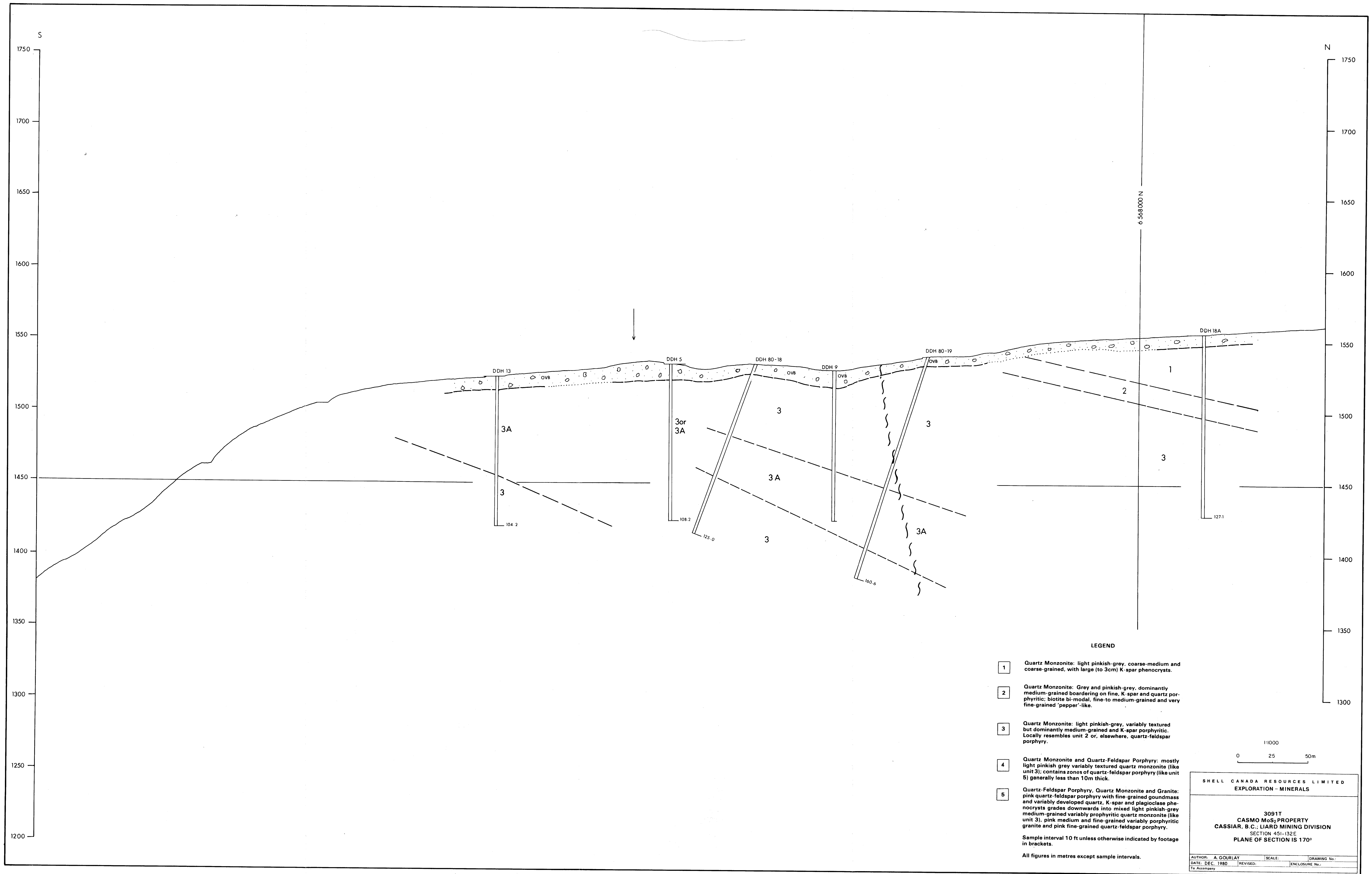
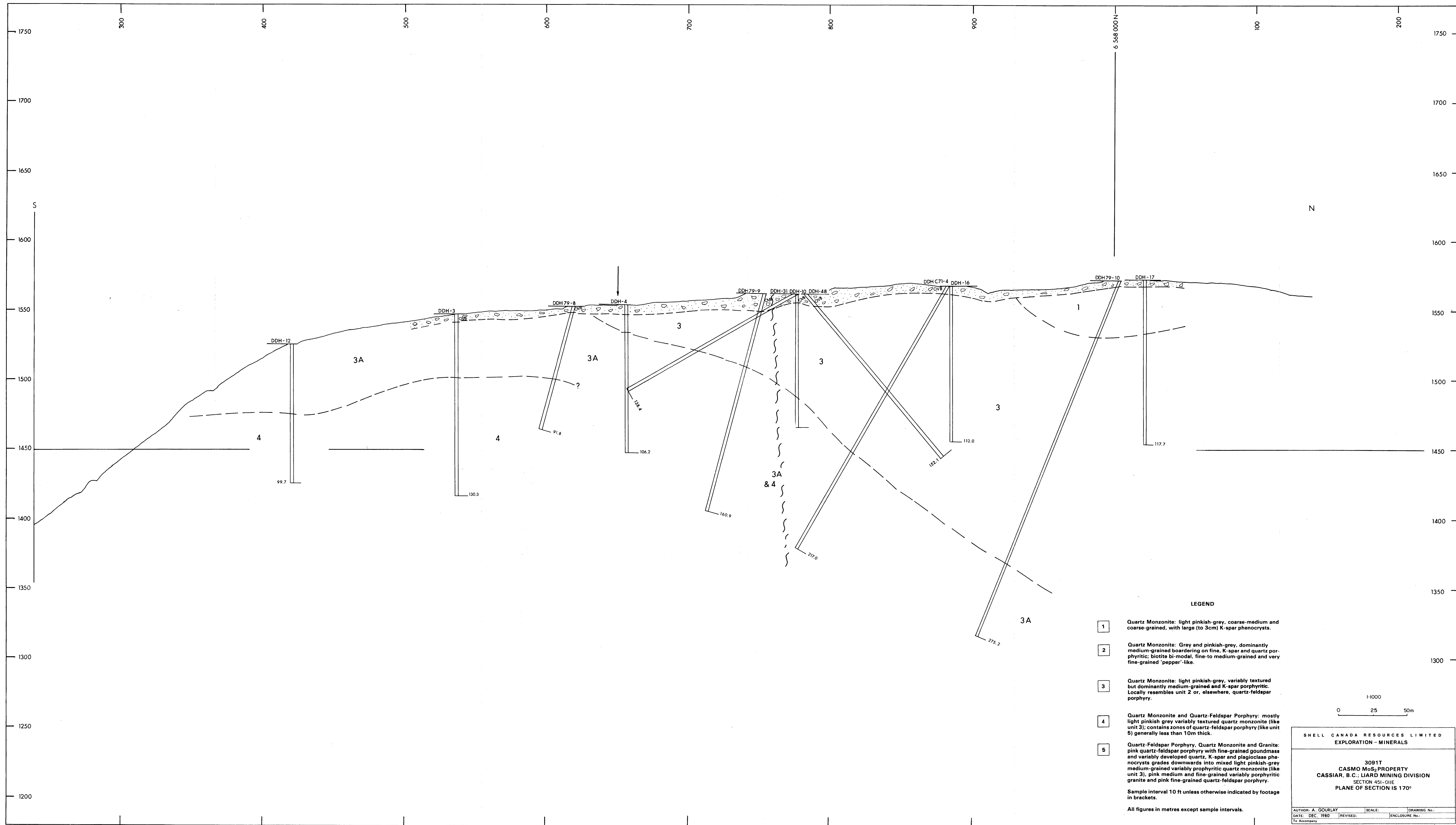


9215
 part 4 of 4

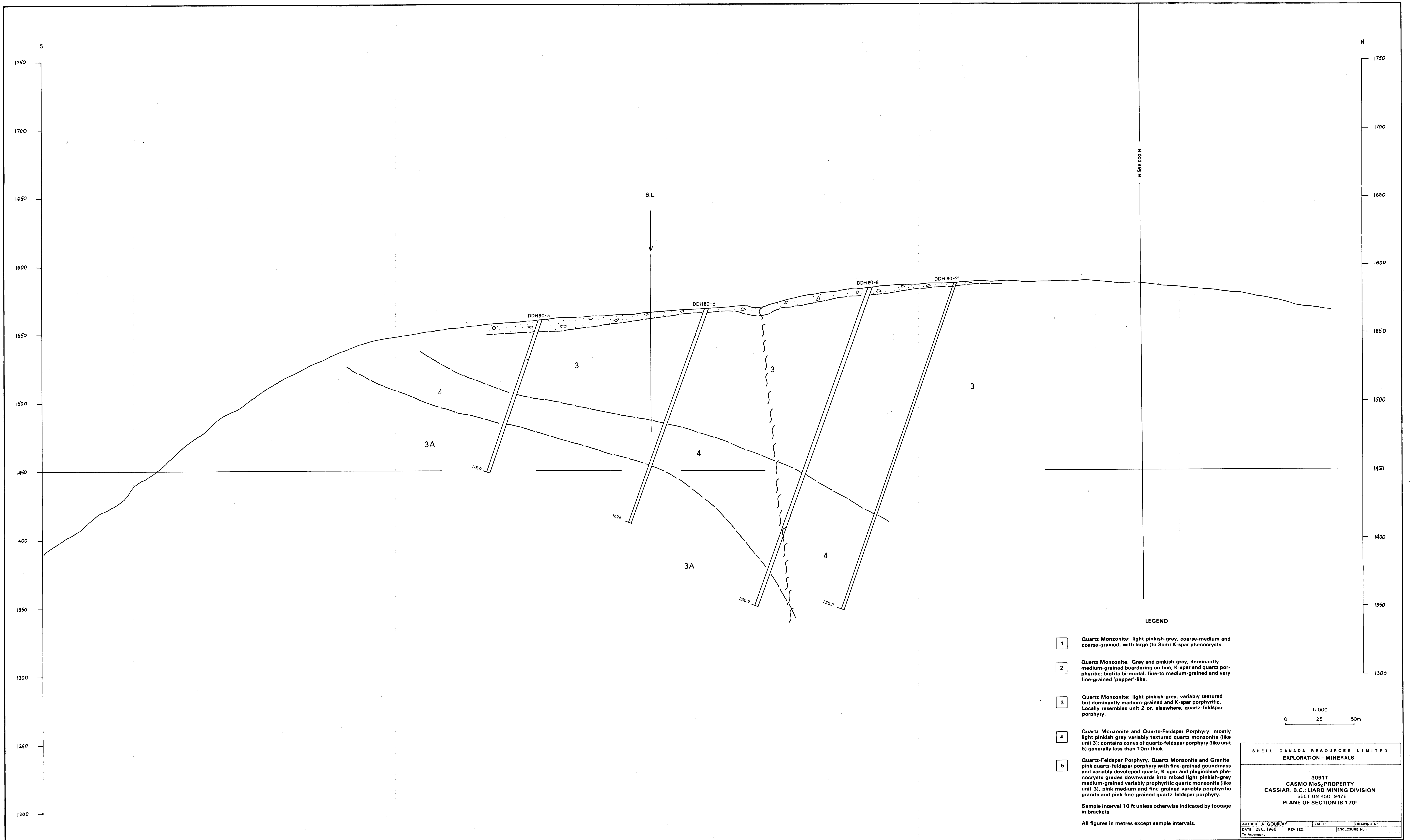


9215
part 4 of 4

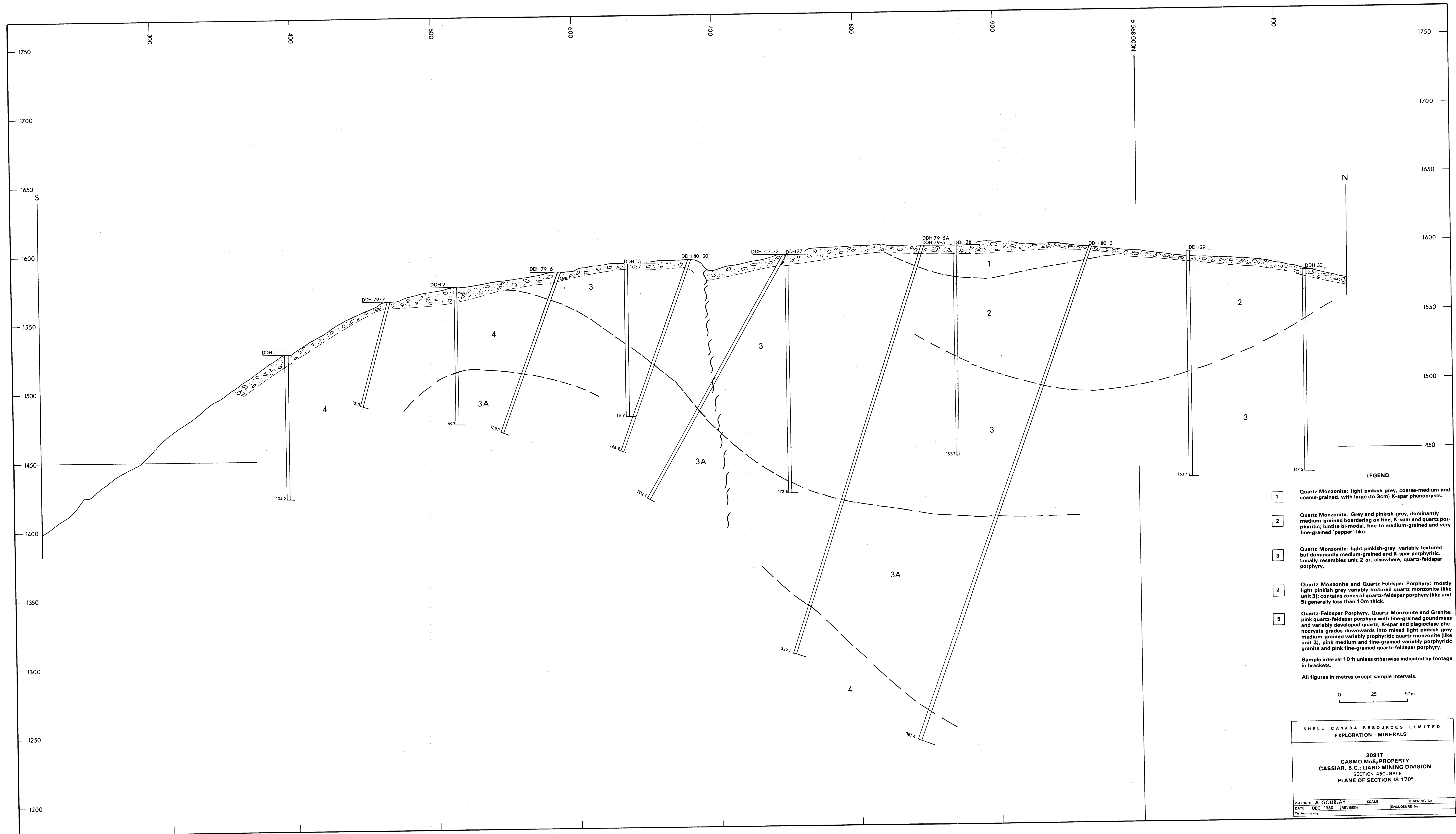


MINERAL RESOURCES DIVISION
 ASSESSMENT REPORT
 9215

part 4 of 4



9215
Part 4 of 4



- LEGEND**
- 1 Quartz Monzonite: light pinkish-grey, coarse-medium and coarse-grained, with large (to 3cm) K-spar phenocrysts.
 - 2 Quartz Monzonite: Grey and pinkish-grey, dominantly medium-grained bordering on fine, K-spar and quartz porphyritic; biotite bi-modal, fine-to medium-grained and very fine-grained 'popper'-like.
 - 3 Quartz Monzonite: light pinkish-grey, variably textured but dominantly medium-grained and K-spar porphyritic. Locally resembles unit 2 or, elsewhere, quartz-feldspar porphyry.
 - 4 Quartz Monzonite and Quartz-Feldspar Porphyry: mostly light pinkish grey variably textured quartz monzonite (like unit 3); contains zones of quartz-feldspar porphyry (like unit 5) generally less than 10m thick.
 - 5 Quartz-Feldspar Porphyry, Quartz Monzonite and Granite: pink quartz-feldspar porphyry with fine-grained groundmass and variably developed quartz, K-spar and plagioclase phenocrysts grades downwards into mixed light pinkish-grey medium-grained variably porphyritic quartz monzonite (like unit 3), pink medium and fine-grained variably porphyritic granite and pink fine-grained quartz-feldspar porphyry.
- Sample interval 10 ft unless otherwise indicated by footage in brackets.
All figures in metres except sample intervals.

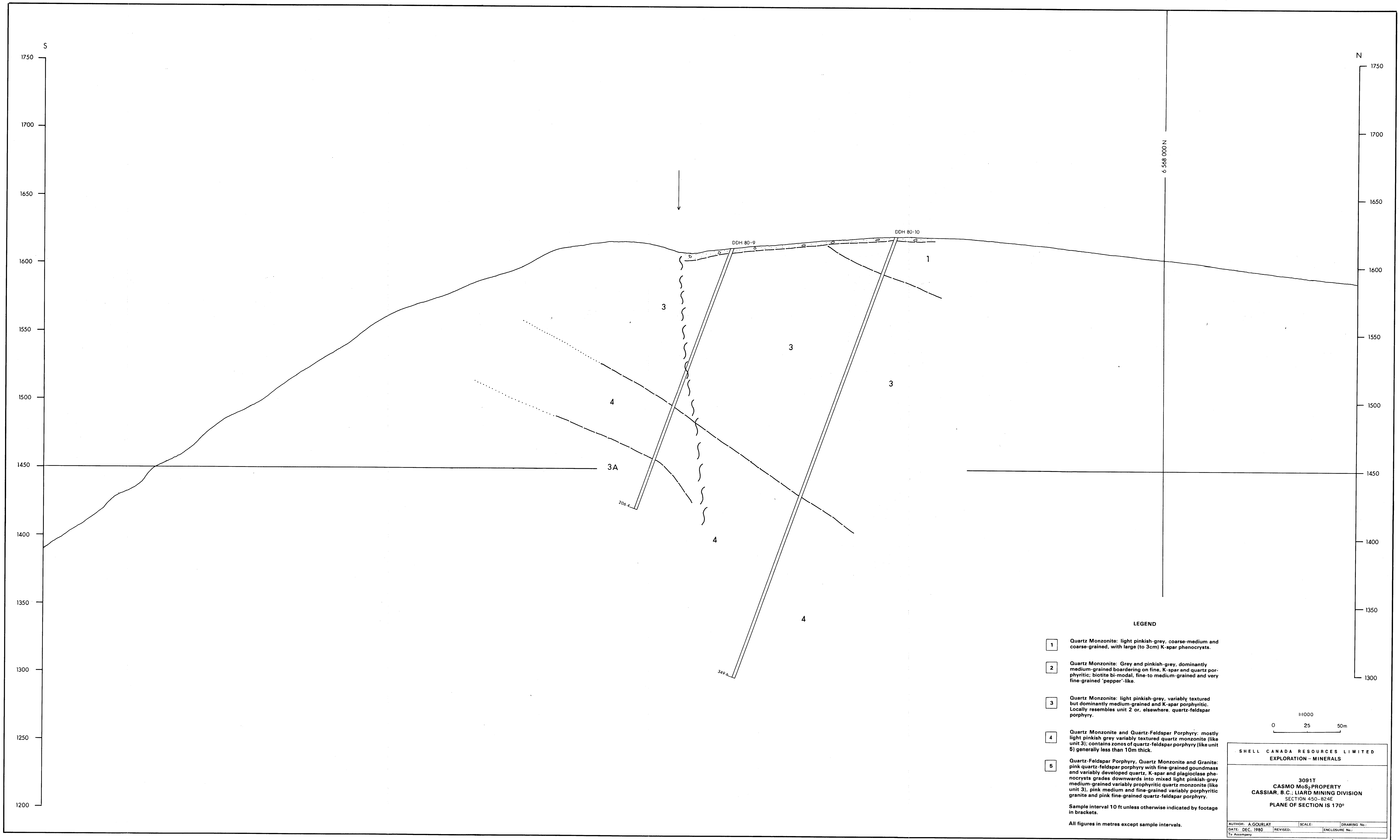
0 25 50m

SHELL CANADA RESOURCES LIMITED
EXPLORATION - MINERALS

3091T
CASMO MoS₂ PROPERTY
CASSIAR, B.C., LIARD MINING DIVISION
SECTION 450-885E
PLANE OF SECTION IS 170°

AUTHOR: A. GOURLAY SCALE: DRAWING No.:
DATE: DEC. 1980 REVISED: ENCLOSURE No.:
Title Assembly

9215
part 4 of 4

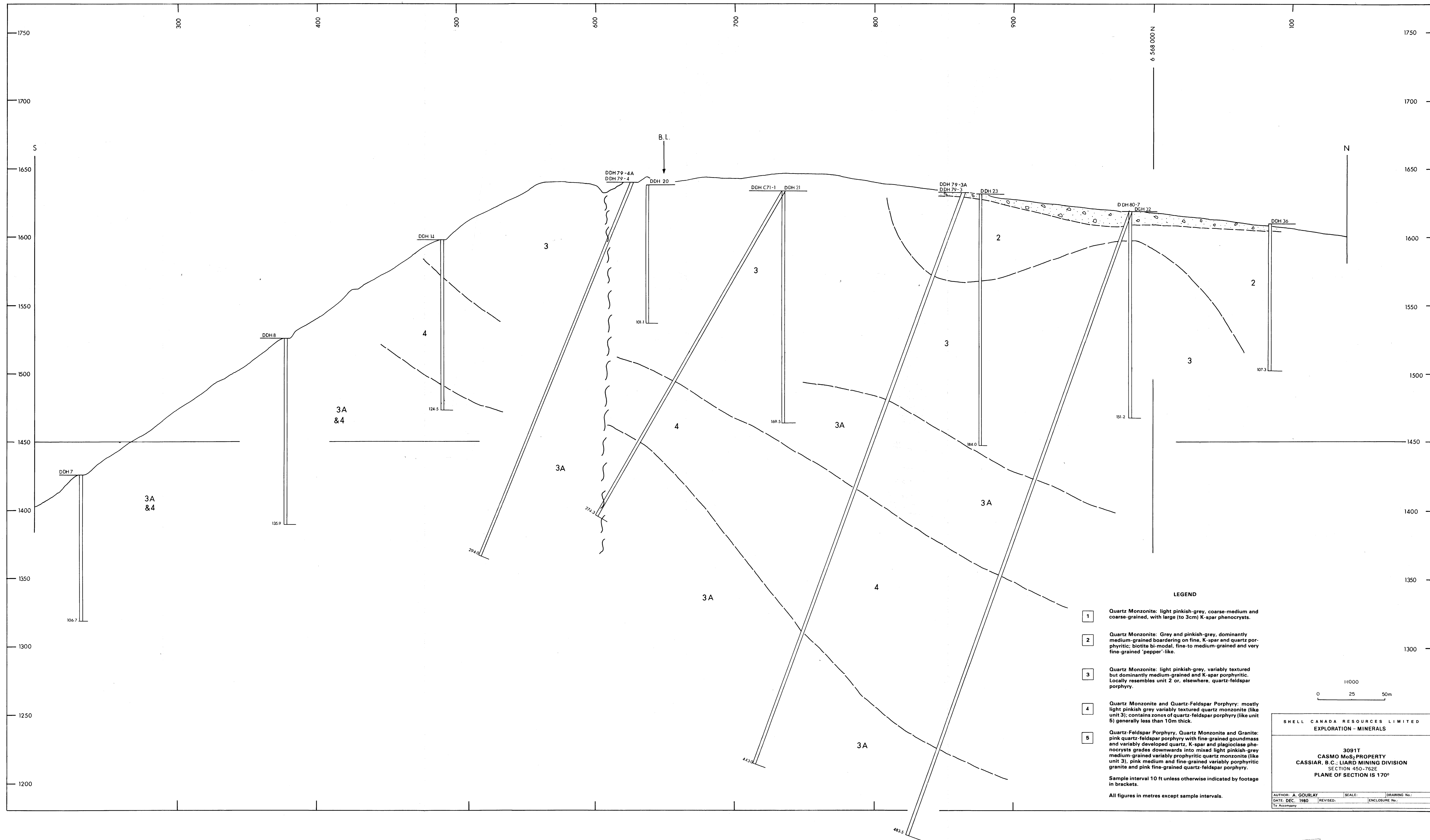


SHELL CANADA RESOURCES LIMITED
EXPLORATION - MINERALS

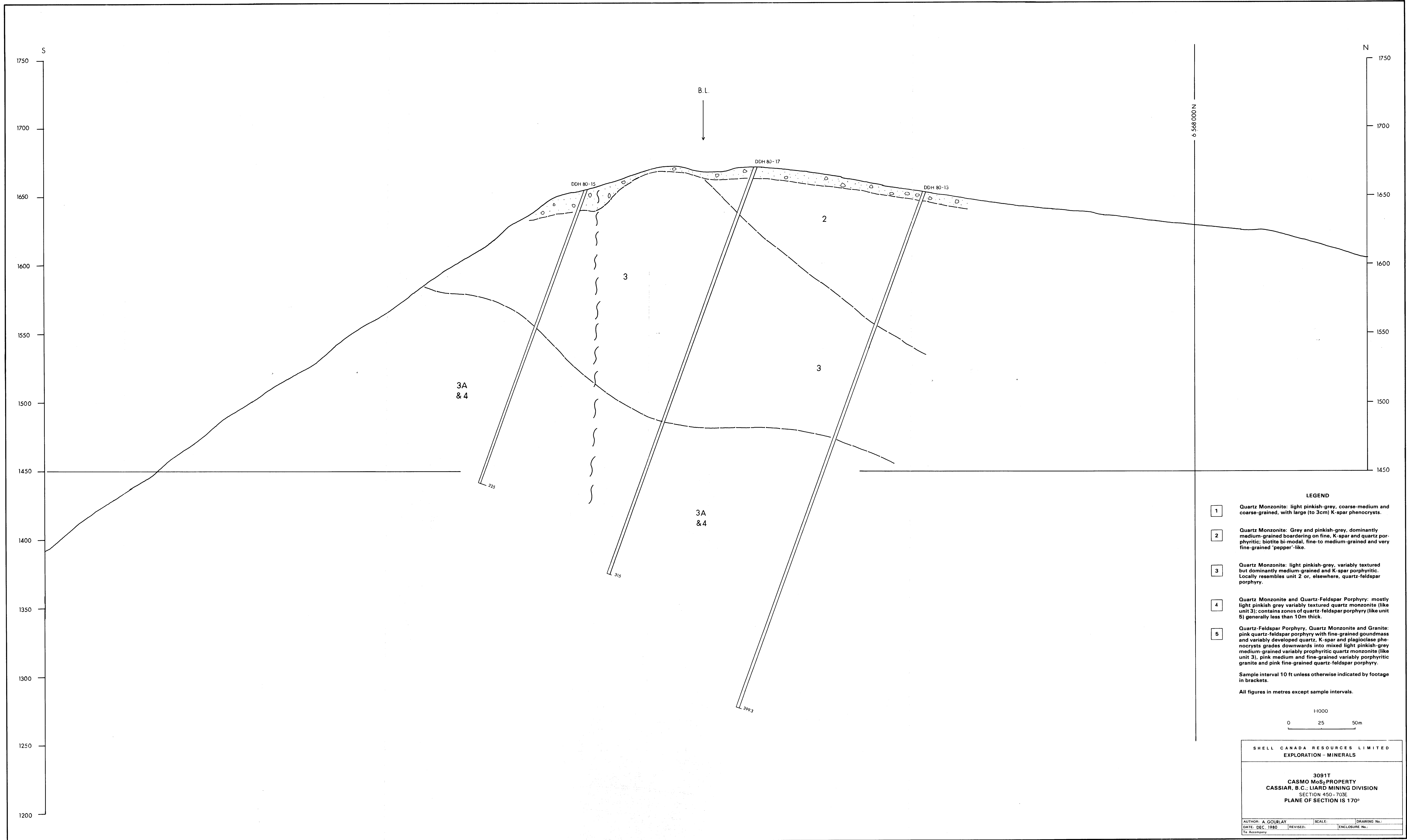
3091T
CASMO MoS₂ PROPERTY
CASSIAR, B.C. LIARD MINING DIVISION
SECTION 450-824E
PLANE OF SECTION IS 170°

AUTHOR: A. GOULEY SCALE: DRAWING No.:
DATE: DEC. 1980 REVISED: ENCLOSURE No.:
By: Assurances

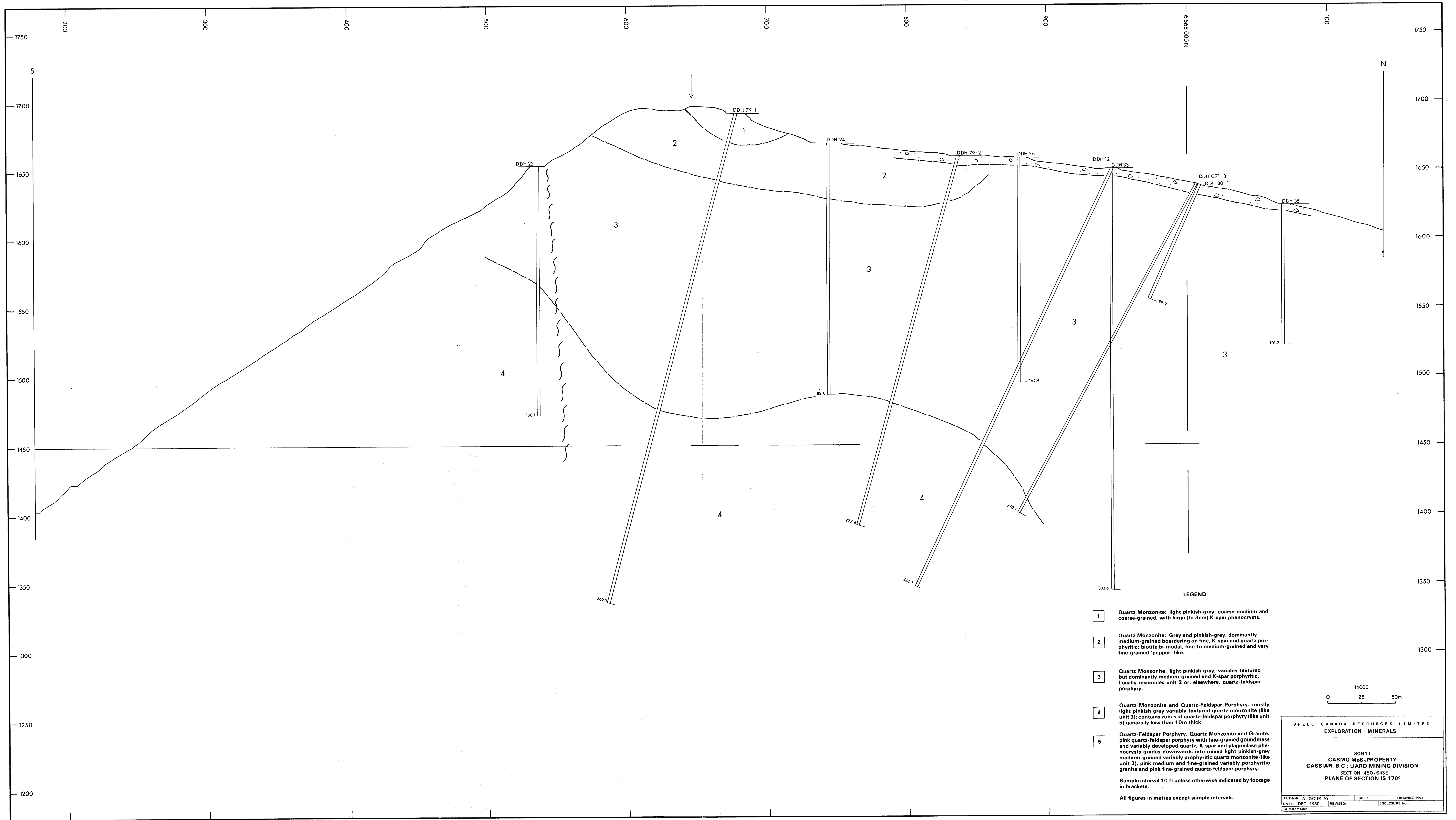
9215
part 4 of 4



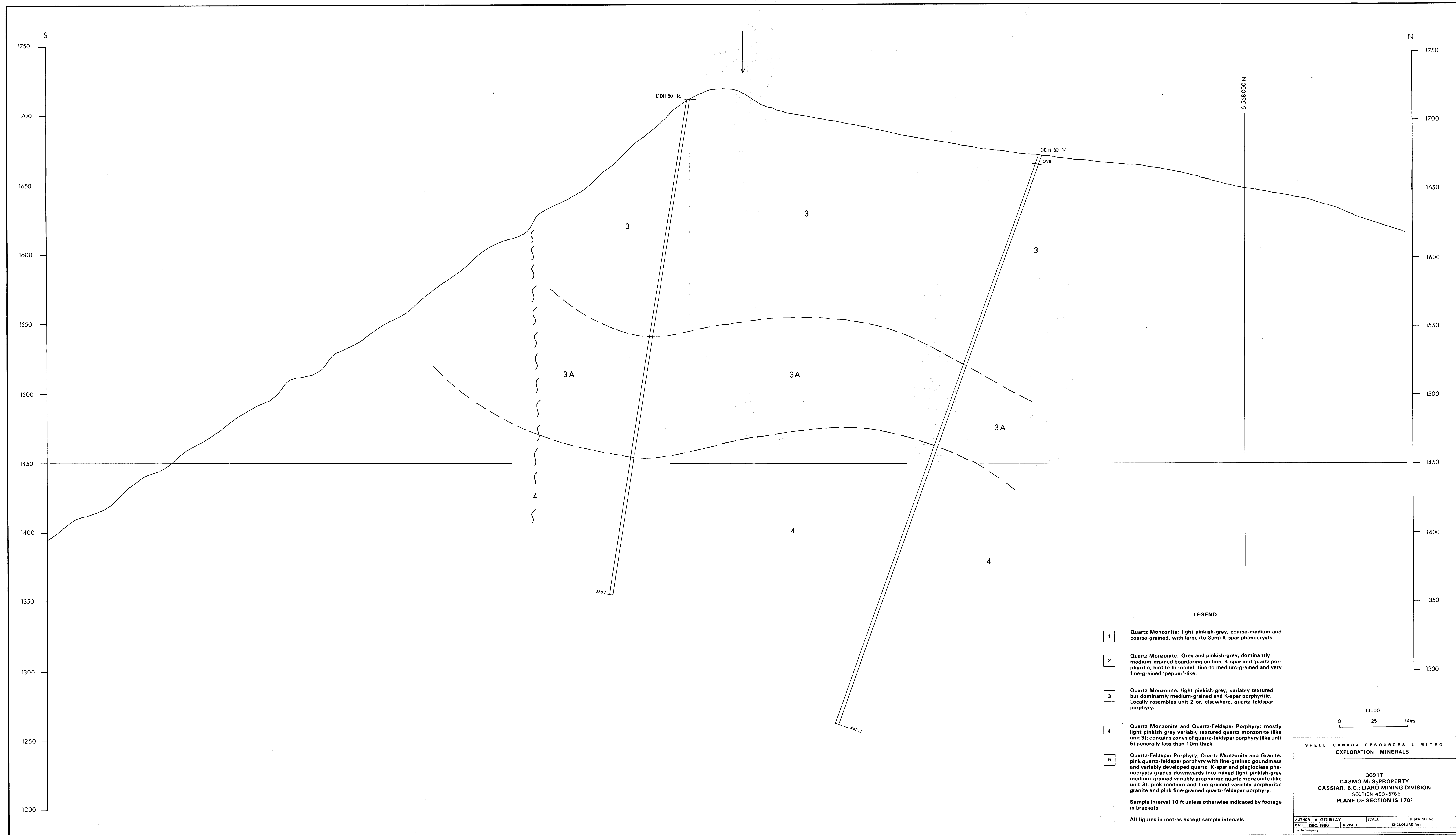
9215
part 4 of 4



9215
part 4 of 4



9215
part 4 of 4



9215 part 4 of 4