

DIAMOND DRILLING REPORT

ON THE

CIRQUE GROUP

Paul River Area
Omineca Mining Division

N.T.S. 94-F-6, 11

Latitude: 57° 30' N

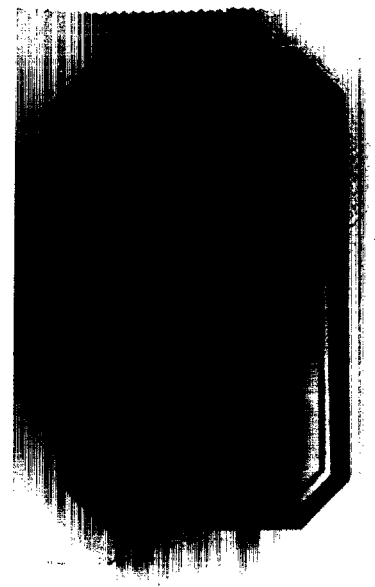
Longitude: 125° 09' W

By:

W. J. Roberts

CYPRUS ANVIL MINING CORPORATION

May, 1981



DIAMOND DRILLING REPORT

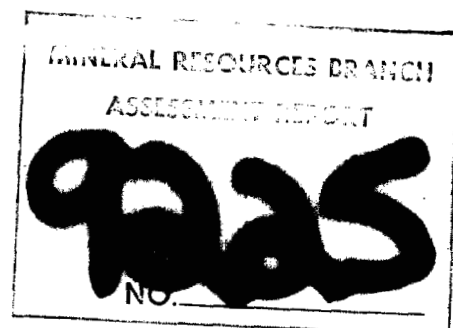
ON THE

CIRQUE GROUP

Paul River Area
Omineca Mining Division

N.T.S. 94-F-6, 11

Latitude: 57° 30' N
Longitude: 125° 09' W



By:
W. J. Roberts
CYPRUS ANVIL MINING CORPORATION

May, 1981

TABLE OF CONTENTS

	<u>Page</u>
List of Claims	(ii)
INTRODUCTION	1
LOCATION and ACCESS	3
REGIONAL GEOLOGY	5
DIAMOND DRILLING	8
CONCLUSIONS and RECOMMENDATIONS	9

List of Illustrations

FIGURE 1	Location Map	4
FIGURE 2	Stratigraphic Column - Akie District	6
APPENDIX I	Diamond Drill Hole Logs for:	
	80-C-15	
	80-C-17	
	80-C-19	
	80-C-24	
	80-C-25	
APPENDIX II	Statement of Qualifications	
APPENDIX III	Summary of Costs	
APPENDIX IV	Affidavit Supporting Summary of Costs	
MAP NO. 1	Claim Map - 1:50,000	
MAP NO. 2	Drill Hole Location Map - 1:5,000	
MAP NO. 3	Cross Section 275 N - 1:2,000	
MAP NO. 4	Cross Section 272 N - 1:2,000	

LIST OF CLAIMS

	<u>Claim No.</u>	<u>Record No.</u>	<u>No. of Units</u>	<u>Recording Date</u>
CIRQUE	1	685	20	July 20, 1977
	2	679	20	July 25, 1977
	3	680	20	July 25, 1977
	4	686	18	July 20, 1977
	5	681	12	July 25, 1977
	6	682	18	July 25, 1977
	7	683	12	July 25, 1977
	8	684	20	July 25, 1977
	11	791	4	Sept. 19, 1977
	12	1246	9	July 18, 1978
	13	1316	9	Aug. 10, 1978
	14	1317	8	Aug. 10, 1978
	15	2201	9	Oct. 24, 1979
	16	2202	16	Oct. 24, 1979
	17	2203	12	Oct. 24, 1979
	18	2895	9	July 11, 1980
	19	2896	20	July 11, 1980
	20	2897	3	July 11, 1980

INTRODUCTION

The CIRQUE GROUP, totalling 207 units, was staked to cover two gossans containing stratiform barite-pyrite-galena-sphalerite float mineralization near the head waters of the Paul River. Preliminary soil and silt sampling, prospecting and geological mapping during the 1977 field season indicated that the two showings were connected by over two kilometers of anomalous lead-zinc soil values.

Work in 1978 included:

- 1) 1:5000 scale geological mapping of a preliminary nature
- 2) additional soil sampling
- 3) 41 kilometers of horizontal loop EM surveys
- 4) 882 meters of diamond drilling in six holes

Although electromagnetics was unsuccessful in distinguishing sulphide mineralization within the graphitic Gunsteel shales it did prove useful in distinguishing major lithologic units on the basis of electromagnetic signature. Three drill holes in the "R" showing area failed to intersect any mineralization (78-C-01, 02 and 03). Drill holes 78-C-04, 05 and 06 intersected stratiform barite-sulphide mineralization over widths of 3.6 to 5.1 meters with grades ranging from 6.0 to 8.7 percent combined lead and zinc with 25 to 37 grams per tonne silver in the K showing area. A 1500 m diamond drill program was proposed for 1979 to continue testing the barite sulphide horizon.

Results of the initial drill holes in 1979 led to expansion of the original program. During the period, June 1 to October 23, 1979, 24 diamond drill holes totalling 8,063 meters were completed. Sixteen

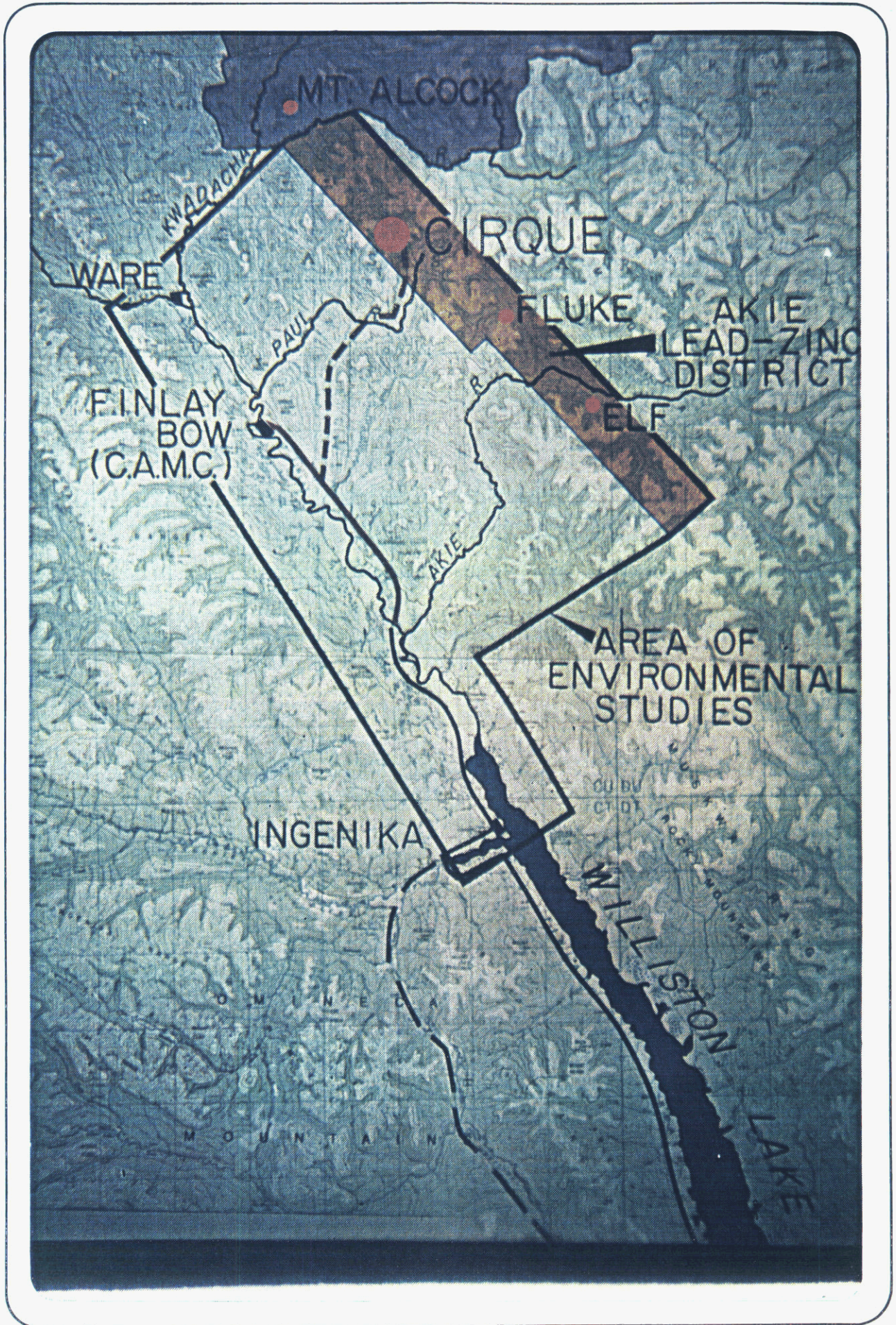
of the twenty-four holes intersected stratiform mineralization over widths ranging from 1.0 m in 79-C to 70 m in 79-C-23. Approximately 18.0 million tonnes grading 2.25% lead, 7.93% zinc and 48.7 grams/tonne silver were drill indicated at the end of the 1979 field season. An additional 15.0 million tonnes of similar grade was calculated as geological reserve.

During 1980 the Cirque was geologically mapped at scales of 1:2000 and 1:5000. Twenty-seven (27) diamond drill holes totalling 10,055 meters were completed by October 23, 1980. The 1980 drill holes were logged and most of the previous drill holes were relogged by the same date. In addition a 4,000 foot airstrip and semi-permanent camp called Finbow were constructed on the Finlay River (Figure 1).

LOCATION and ACCESS

The CIRQUE GROUP is located near the head waters of the Paul River in northeastern British Columbia. The claims cover a northwest-trending ridge between the Paul River on the southeast and an unnamed creek informally called Cirque Creek on the northwest. The property is centered 30 km east of Ware, 27 km south of Chesterfield Lake and 27 km northeast of Grave Mountain at latitude $57^{\circ} 30' N$ and longitude $125^{\circ} 09' W$.

Fieldwork and diamond drilling were supported by helicopters based at the Finbow airstrip constructed during the early spring and summer of 1980 (see Figure 1). Logistic support was provided by fixed wing aircraft based at Mackenzie, 250 km to the southeast. Fuel and bulk cargo were moved by barge from Mackenzie to the north end of Williston Lake and shuttled either by air or by river barge the remaining distance to Finbow.



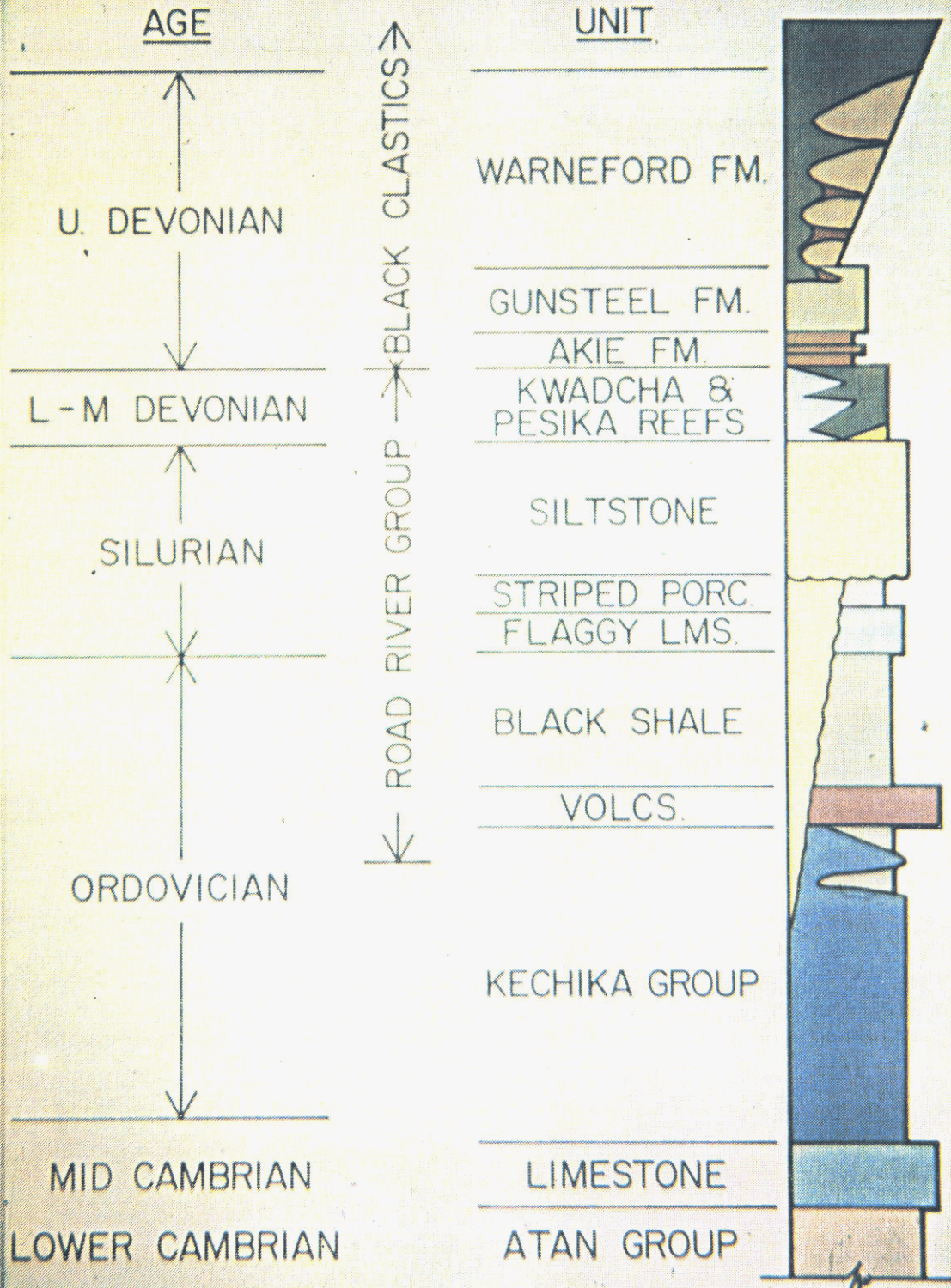
REGIONAL GEOLOGY (Figure 2)

Lower Devonian to Mississippian rocks are preserved in a series of synformal fold keels and thrust plates that form four sinuous, semi-continuous, northwest-trending belts. This package overlies and is overthrust by Upper Cambrian to Silurian strata belonging to the Kechika and Road River Groups. The Devonian to Lower Mississippian section can be split into four main subdivisions. The Lower to Middle Devonian limestones and shales are characterized by massive, grey, fossiliferous limestone (Kwadacha and Pesika Reefs), limestone debris flows and chert breccias that interfinger laterally with graptolitic shales, cherts and distal calcareous turbidites (Paul River Formation).

The Akie Formation comprises rusty brown and grey-weathering shale, silty shale and siliceous shale which unconformably overlie the Lower to Middle Devonian strata. Some shales which have been mapped as Akie Formation may be facies equivalents of the Lower to Middle Devonian units, or basal shales of the Gunsteel Formation. An unconformity between the top of the Silurian and the base of the Upper Devonian is indicated in drill core by the conglomeratic, reworked top of the Silurian Siltstone. The duration and regional nature of the unconformity are poorly understood. The problem is complicated by depositional thickness and facies changes in Lower to Middle Devonian strata and lack of paleontologic control.

The Gunsteel Formation consists of silvery-grey weathering, black, siliceous, carbonaceous shale and chert, and overlies the Lower to Middle Devonian package. The Gunsteel Formation is host for all

LITHOSTRATIGRAPHIC COLUMN AKIE DISTRICT



known barite-sulphide mineralization and most of the known stratiform barite deposits in the region. It is described in detail in a following section.

The Warneford Formation is Upper Devonian to lower Mississippian submarine fans of chert and shale conglomerates in the west interbedded to the east with silty distinctly laminated shales which have thin dolomitic siltstone interbeds. The Warneford Formation is interbedded with and overlies the Gunsteel Formation. It locally contains nodular and bedded barite that may be stratigraphically equivalent to the barite in the Gunsteel Formation.

DIAMOND DRILLING

Two Longyear Super 38 and two Longyear 44 drills contracted by J.T. Thomas of Smithers, B.C. were used in 1980. A total of 27 holes were collared on the Cirque Group. All coring was done using NQ equipment except where drilling problems required reduction to BQ. Problems were encountered in long holes with excessive drill hole deviation and gouge zones related to normal faults. Drill holes were all surveyed at 100 to 300 foot intervals using Sperry-Sun, down-hole magnetic surveying equipment. This proved to be very effective except in a number of cases where the drill string had to be left in the hole.

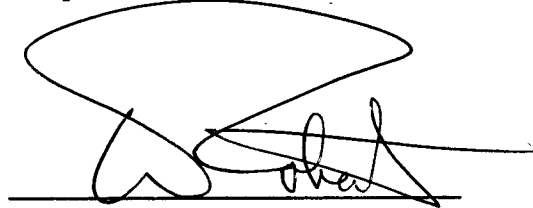
Drilling in the Five Bear Creek Valley, south of the known Cirque Deposit failed to locate any significant mineralization in the host Gunsteel Formation (unit 8). The Pregnant Shale (unit 8S), the stratigraphic equivalent of the barite-sulphide facies in the Cirque area, was intersected in all holes and did contain horizons of laminar banded pyrite but the massive baritic facies was notably absent. Although the pyritic horizons were not assayed during the 1980 program, rock chip sampling of all Gunsteel Formation for lithogeochemical trends will be completed in 1981. All core is presently stored in core racks on the property in a large alpine field in the northern portion of the claim group.

CONCLUSIONS and RECOMMENDATIONS

The five drill holes collared in Five Bear Creek were unsuccessful in tracing the south extension of the Cirque deposit on Cirque claims 4 and 6. The Pregnant Shale, the stratigraphic equivalent of the massive barite-pyrite horizon, was intersected in all holes with minor laminar banded pyrite mineralization.

Further drilling is recommended to the west of drill holes 80-C-24 and 80-C-25 to test for massive barite-sulphide mineralization associated with a thinning of the Pregnant Shale - a trend that is apparent in the Cirque Deposit area approximately one kilometer to the north.

Respectfully submitted,

A handwritten signature in black ink, appearing to read 'W. J. Roberts', is written over a horizontal line. The signature is stylized and somewhat cursive.

W. J. Roberts
Senior Geologist, Base Metal Projects

APPENDIX I

CYPRUS ANVIL MINING CORPORATIONDIAMOND DRILL CORE LOG

Hole Number: 80-C-15 Fabric Orientation Diagram: _____

Project: GATAGA

Location: CIRQUE Claims, Five Bear Creek

Claim: CIRQUE # 4

Terr. Plane Co-ords.: (not surveyed) .6 373 685 N

(not surveyed) 372 004 E

Grid Co-ords.: 274+60N, 294+80E

Inclination: -60° towards 050° All symmetry determinations looking
NW _____ with S₁ dipping
SW _____ with dip azimuth 220°.

Elevation: 1470 m

Total Depth: 614.8 m

Purpose: To test the possibility of mineralization beneath the south kill zone.
Reason for stopping: Reached limit of machine, in barren east panel of Pregnant Shale.

Logged by: C. Jefferson, D. Perkins Date(s) Logged: September 1980

Drilling Contractor: J. T. Thomas Core: Size From To Collar Cased and Capped: NO

Core	Size	From	To
	N casing	0	30.5
	NQ	30.5	614.8

Started: Sept. 10/80 Completed: Oct. 2/80

DDH 80615
2 8

Cyprus Anvil Mining Corp.

Page _____ of _____

Lithologic Log

Date: Oct 2/81 Logged By: CWJ

Code	From		To		Recov.	No.	Unit	Description		
	10	14	16	20					22	24
		00		30				overburden		
				32			4J	limestone rubble		
				54			8U	light grey phyllitic shale		
				63			8T	black poker chip shale		
				73			8T	black laminated poker chip shale with minor porcellanite		
				79			8T	siliceous black poker chip shale		
				89			8S	black siliceous massive bedded Pregnant shale		
				110			8T	black laminated poker chip shale		
				127			6H	black shale moderately siliceous with dolomitic siltstone interbeds		
				500			5D	Massive competent, laminated variably bioturbated siltstone		
				583			8S	Massive bedded, black Pregnant shale with minor laminae banded pyrite.		
				605			8T	Black laminated siltstone and shale		
				614			8S	Massive bedded black shale, moderately siliceous, several carbonate nodules.		
								END OF HOLE		

CYPRUS ANVIL MINING CORPORATIONDIAMOND DRILL CORE LOGHole Number: 80-C-17

Fabric Orientation Diagram:

Project: GATAGALocation: CIRQUE Claims, Five Bear CreekClaim: CIRQUE # 4Terr. Plane
Co-ords.: (not surveyed) 6 373 685 N(not surveyed) 372 004 EGrid
Co-ords.: 274+60N, 294+80EInclination: Vertical

All symmetry determinations looking

NW with S₁ dippingElevation: approximately 1470 mSW with dip azimuth 220°.Total Depth: 163.1 mPurpose: Test stratigraphy suggested by 80-C-15, test the geochemical anomaly at south end of Cirque. Reason for stopping: intersected pregnant shale, then footwall Silurian Siltstone.Logged by: D. Kilby Date(s) Logged: September 1980Drilling Contractor: J. T. Thomas Core: Size From To Collar Cased and Capped: NoN casing 0 30.5 mNQ 30.5 163.1 mStarted: Sept. 22/80 Completed: Sept. 27/80

DDH 80C17
2 8

Cyprus Anvil Mining Corp.

Page _____ of _____

Lithologic Log

Date: Sept 27/80 Logged By: DBK

Code	From		To		Recov.	No.	Unit	Description		
	10	14	16	20					22	24
				136	5			overburden		
				180	8		3U	grey phyllitic shale		
				190	0		3T	black laminated shale with fine siltstone laminae		
				1127	4		3S	black massive bedded siliceous pregnant shale with minor laminar banded pyrite		
				1137	0		6S	laminated siliceous black shale, minor light grey siltstone interbeds and discontinuous stafiform pyrite.		
				1163	1		5D	Moderately well laminated grey dolomitic siltstone.		
								END OF HOLE		

CYPRUS ANVIL MINING CORPORATIONDIAMOND DRILL CORE LOGHole Number: 80-C-19

Fabric Orientation Diagram:

Project: GATAGALocation: CIRQUE ClaimsClaim: CIRQUE # 4Terr. Plane Co-ords.: (not surveyed) .6 373 850 N(not surveyed) 372 230 EGrid Co-ords.: 275+30N, 296+50EInclination: 60° toward 050°

All symmetry determinations looking

North with West dippingElevation: (not surveyed) 1583 mS₁ with dip azimuth 220°.Total Depth: 317.9 mPurpose: To test Black Clastic section in the Five Bear Creek area. Reason for stopping: Silurian Siltstone footwall.Logged by: D. Kilby, C. Jefferson Date(s) Logged: October 5, 1980Drilling Contractor: J. T. Thomas Core: Size From To Collar Cased and Capped: No

NW	0	71.6
NQ	71.6	317.9

Started: Sept. 28/80 Completed: Oct. 5/80

DDH 80C19
 2 8

Cyprus Anvil Mining Corp.

Page _____ of _____

Lithologic Log

Date: Oct 5/80 Logged By: CWT, DBK

Code	From	To	Recov.	No.	Unit	Description
	10 14 16 20 22 24 26 28 30 34 35					
		70				overburden
		229			4K	black cryptolitic shale with grey distorted chert nodules
		606			4J	- massive, laminated, brecciated light grey limestone
		716			1F	- fault zone
		1370			8U	indistinctly laminated, light grey phyllitic shale
		1400			8T	- black graphitic moderately siliceous well cleaved shale with minor light grey silt laminae.
		1520			8S	Laminated argillaceous shale with large carbonate nodules and light grey siltstone and pyrite laminae.
		1595			8T	well cleaved laminated black shale with interbedded siltstone.
		1941			8T	- shale as above with intervals > 1 meter thick of light grey siltstone.
		2047			6S	Massive bedded, laminated black shale.
		31179			50	massive coning, light grey variably bioturbated dolomitic siltstone with several shaly intervals
						END OF HOLE

CYPRUS ANVIL MINING CORPORATION

DIAMOND DRILL CORE LOG

Hole Number: 80-C-24

Fabric Orientation Diagram:

Project: GATAGA

Location: CIRQUE Claims, Five Bear Creek area

Claim: Cirque # 6

Terr. Plane (not surveyed) 6.373 303
Co-ords.: _____ N

(not surveyed) 373 983
_____ E

Grid Co-ords.: L272+70E, approx. 291+00N

Inclination: -60° at 050°

All symmetry determinations looking

NW with S₁ dipping

Elevation: (not surveyed) 1303 m

SW with dip azimuth 220°.

Total Depth: 210.6 m

Purpose: Test down-dip extension of Pregnant Shale near geochemical anomaly.

Reason for stopping: Intersected Pregnant Shale and into Silurian Siltstone.

Logged by: C. Jefferson, W. Roberts Date(s) Logged: October 8, 9/1980

Drilling Contractor: J. T. Thomas Core: Size From To Collar Cased and Capped: No

N casing 0 54.9

NQ 54.9 210.6

Started: Oct. 6/80 Completed: Oct. 9/80

DDH 8.0.C.E.4
2 8

Cyprus Anvil Mining Corp.

Page _____ of _____

Lithologic Log

Date: Oct 9/80 Logged By: CWJ, DBK, WJR

Code	From		To		Recov.	No.	Unit	Description
	10	14	16	20				
		0		549				overburden
				818			80	light to med. grey phyllitic shale.
				838			80	dark grey to black, siliceous shale.
				1145			85	massive bedded, black, variably pyritic fragment shale with minor blebby barite.
				1158			87	well laminated black siliceous shale
				1189			65	- massive to laminated shaly siltstone gradational contact with underlying siltstone.
				2106			50	competent, blocky, light to medium grey dolomitic siltstone.
								END OF HOLE

CYPRUS ANVIL MINING CORPORATIONDIAMOND DRILL CORE LOGHole Number: 80-C-25

Fabric Orientation Diagram:

Project: GATAGALocation: CIRQUEClaim: CIRQUE # 6, Five Bear CreekTerr. Plane
Co-ords.: (not surveyed) 6 373 303 N(not surveyed) 371 983 EGrid
Co-ords.: L272+70E (291+00N)Inclination: -90°

All symmetry determinations looking

NW with S₁ dippingElevation: 1303 m (not surveyed)SW with dip azimuth 220°.Total Depth: 272.2 mPurpose: Test down-dip extension of Pregnant Shale. Reason for stopping: Intersected Pregnant Shale and footwall siltstone.Logged by: C. Jefferson Date(s) Logged: October 14, 1980Drilling
Contractor: J. T. Thomas Core: Size From To Collar Cased
and Capped: NoN casing 0 33.5NQ 33.5 272.2Started: Oct. 9/80 Completed: Oct. 14/80

DDH 80025
2 8

Cyprus Anvil Mining Corp.

Page _____ of _____

Lithologic Log

Date: Oct 14/80 Logged By: CWJ

Code	From		To		Recov.	No.	Unit	Description
	10	14	16	20				
			13	35				overburden
			13	10			80	light to medium grey phyllitic shale
			13	32			80	black siliceous shale
			21	24			8S	massive bedded black argillaceous shale with intervals of laminar bedded pyrite and limestone nodules < 20 cm.
			23	30			8T	laminated black shale with minor blebby quartz.
			23	62			8S	- argillaceous shale with 720's fine laminae of pyrite
			26	02			8S	- massive bedded argillaceous shale with several short intervals < 1 meter of minor laminae bedded pyrite.
			27	22			6S	massive coning, laminated medium grey shaly siltstone with light grey calcisiltite lenses
								END OF HOLE

Appendix II

STATEMENT OF QUALIFICATIONS

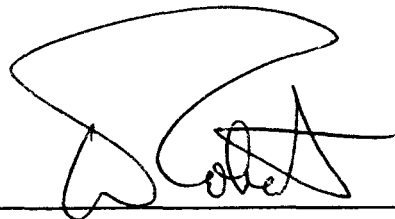
I, WAYNE J. ROBERTS, geologist, with business address in Vancouver, British Columbia, and residential address in Coquitlam, British Columbia, hereby certify that:

1) I graduated from the University of British Columbia in 1968 with a BSc majoring in Geology.

2) From 1968 to the present I have been actively engaged as a geologist in mineral exploration in British Columbia and the Yukon Territory.

3) I am a Fellow of the Geological Association of Canada.

4) I personally supervised the field work on the CIRQUE GROUP and have interpreted all data resulting from this work.



WAYNE J. ROBERTS

Appendix III

SUMMARY OF COSTS

Salaries and Wages

Norm Laube	- Sept. 15 - 21st. Sept. 30 Oct. 11 - 15th	13 days @ 50.17/day	\$ 652.21
Murray Biedler	- Sept. 24, 25, 29, 30 Oct. 3 - 9, 11 - 15th	16 days @ 50.17/day	802.72
Steve Smele	- Oct. 12 - 15th	3 days @ 47.50/day	142.50
C. W. Jefferson	- Oct. 3 - 18th	16 days @ 110.00/day	1,760.00
W. J. Roberts	- Oct. 1 - 9th	10 days @ 145.00/day	1,450.00
D. B. Kilby	- Sept. 15 - 30th	16 days @ 145/day	2,320.00
			<u>\$ 7,127.43</u>

Diamond Drilling

Drill Hole:

80-C-15	614.8 m x \$121.40/m =	\$ 74,636.72
80-C-17	163.1 m x \$121.40/m =	19,800.34
80-C-19	317.9 m x \$121.40/m =	38,593.06
80-C-24	210.6 m x \$121.40/m =	25,566.84
80-C-25	272.2 m x \$121.40/m =	33,045.08
		<u>\$ 191,642.04</u>

Drill Site Preparation

- McCrory Holdings Ltd. - 2 men @ \$200/man/day from Sept. 5 - 20th

16 days x \$400/day \$ 6,400.00

Field Equipment and Supplies 5,727.75

Camp Maintenance 20,216.94

Fuel 5000 gallons Turbo B @ \$2.50/gallon \$12,500.00

3000 gallons diesel @ \$2.00/gallon 6,000.00

18,500.00

Rotary Wing Viking Helicopter 500D - 86 hours @ \$300/hour \$25,800

Shirley Helicopters - 71 hours @ \$600/hour 42,600

\$ 68,400

Fixed Wing 6 trips with twin Beech from Mackenzie

6 x 330 miles x 1.70/mile 3,366.00

Miscellaneous Transportation 15% of total cost (8,868.66) 1,330.30

District Expense 15% of total cost (7,602.48) 1,140.37

Report Writing W. J. Roberts, May 25, 26th (2 days @ \$230/day) 460.00

Drafting C.L. Cory, May 27 and 28th (14 hours @ \$16/hour) 224.00

TOTAL DIRECT EXPENDITURES \$ 324,534.46

Cyprus Anvil Mining Corporation

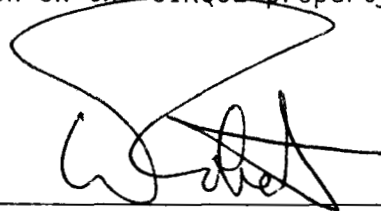
300, 355 Burrard Street
Vancouver, British Columbia
V6C 2G8
Telephone (604) 687-2586

Telex 04508594

Appendix IV

Affidavit Supporting Summary of Costs

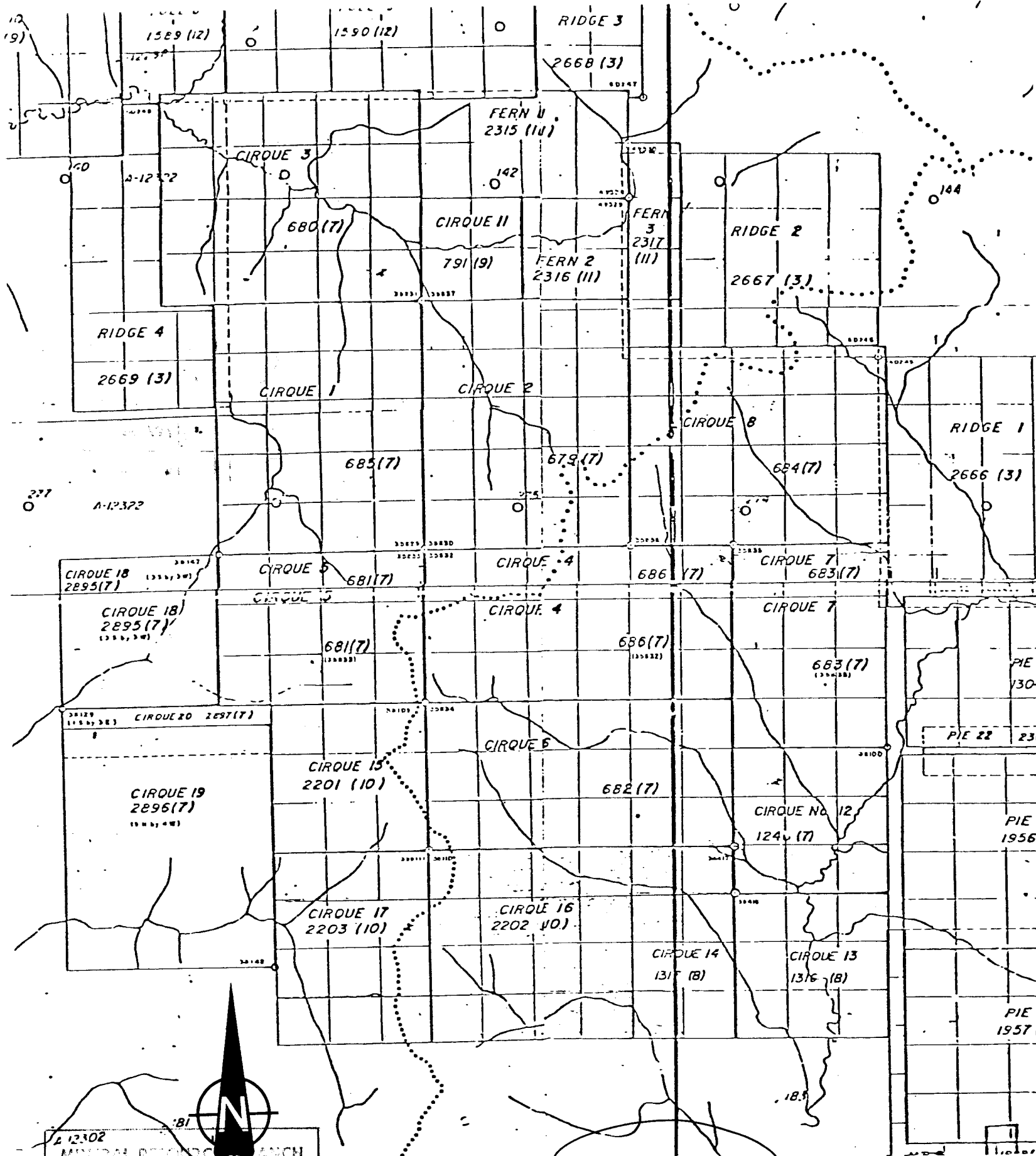
I, WAYNE J. ROBERTS, Geologist, Cyprus Anvil Mining Corporation, of Vancouver, British Columbia, do hereby state, that, to the best of my knowledge and belief the Statement of Costs in this report (Diamond Drilling Report on the CIRQUE GROUP) is a true account of expenditures incurred from exploration on the CIRQUE property.



WAYNE J. ROBERTS

June 20/81
DATE

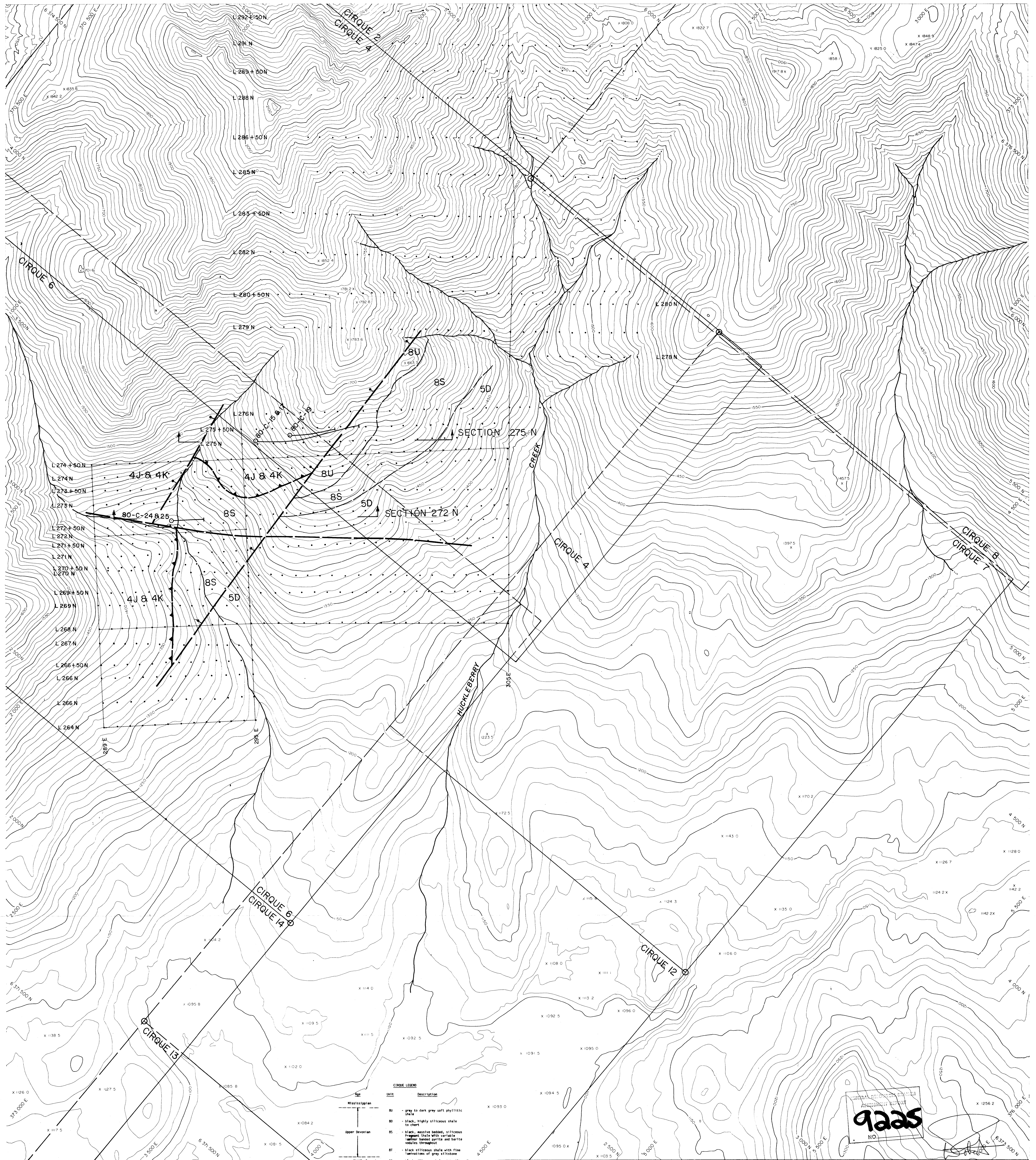
CYPRUS ANVIL



12-302
 MINERAL RESOURCES BRANCH
 APPRAISAL REPORT
9225

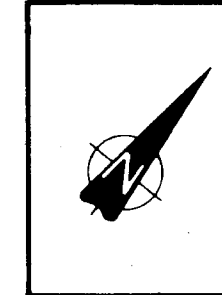
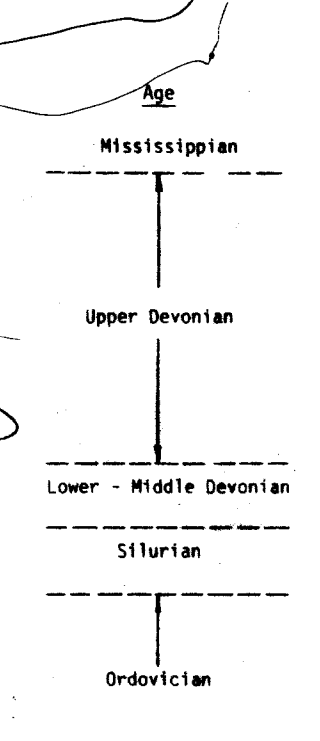
LOCATION MAP

CIRQUE GROUP
 Scale: 1:50,000



CIRQUE LEGEND

Unit	Description
80	gray to dark grey soft phylitic shale
80	black, highly siliceous shale to chert
85	black, massive bedded, siliceous fragment shale with variable lamellar banding pyrite and barite nodules throughout
87	black siliceous shale with fine laminations of grey siltstone
85	black siliceous shale with calc laminations, often pyritic
50	massive, variably blotched grey dolomitic siltstone
43	flaggy to blocky bedded, rhythmic grey limestone
46	black granitic gneiss with variable calcareous shale



Compiled from aerial photography on an approximate scale of 1:20,000 from 1979

McElhanney
 McElhanney Surveying & Engineering Ltd.
 1200 West Pender Street, Vancouver B.C., Canada

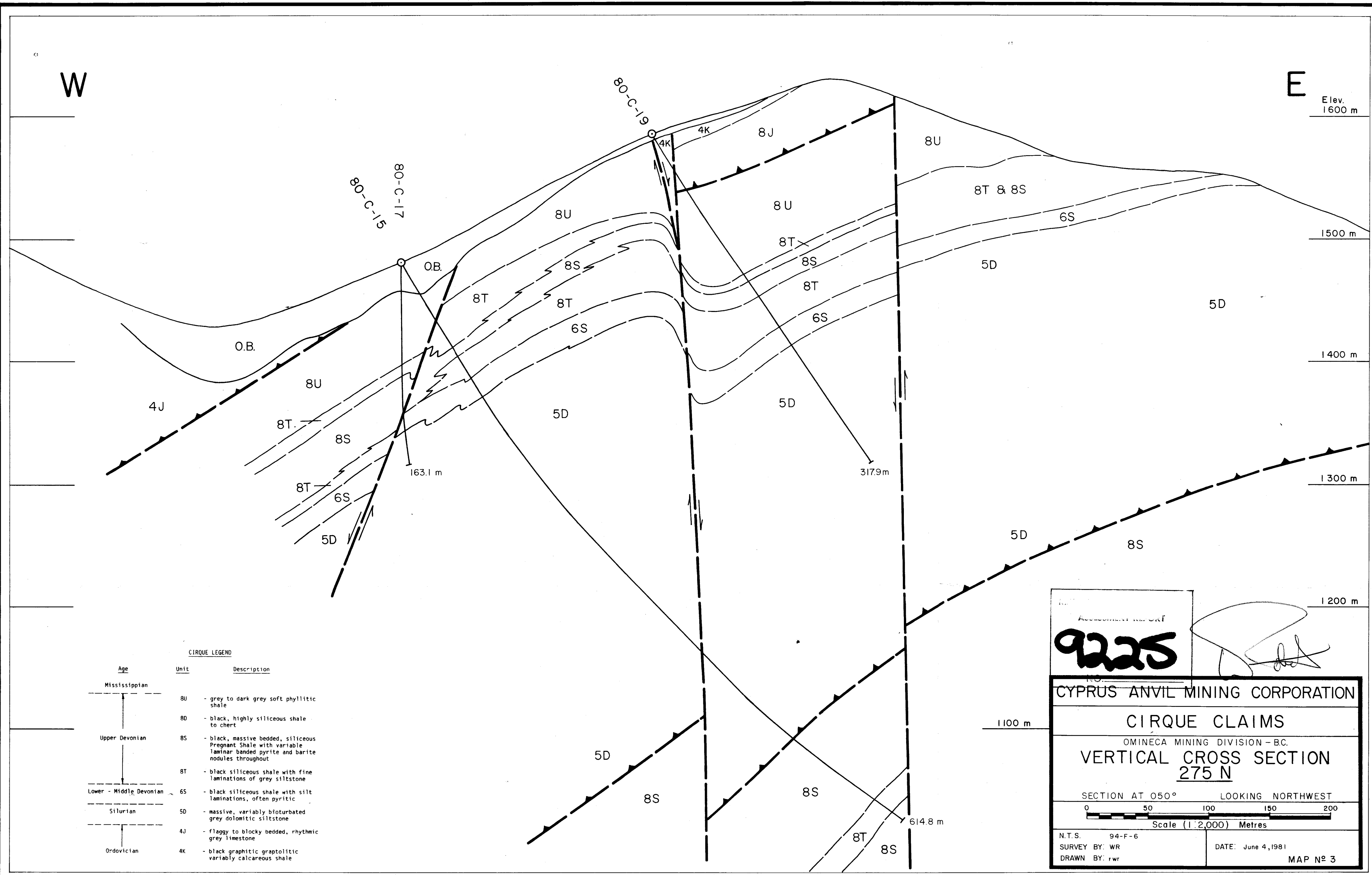
Scale: 1:5000
 Contour Interval: 10 Metres
 Date: May 1980 June 4, 1981
 Job No.: 06573-5
 Sheet No.: 8

CYPRUS ANVIL MINING CORP.
CIRQUE CLAIM
 DRILL HOLE LOCATION MAP MAP NO. 2

W

E

Elev. 1600 m



CIRQUE LEGEND

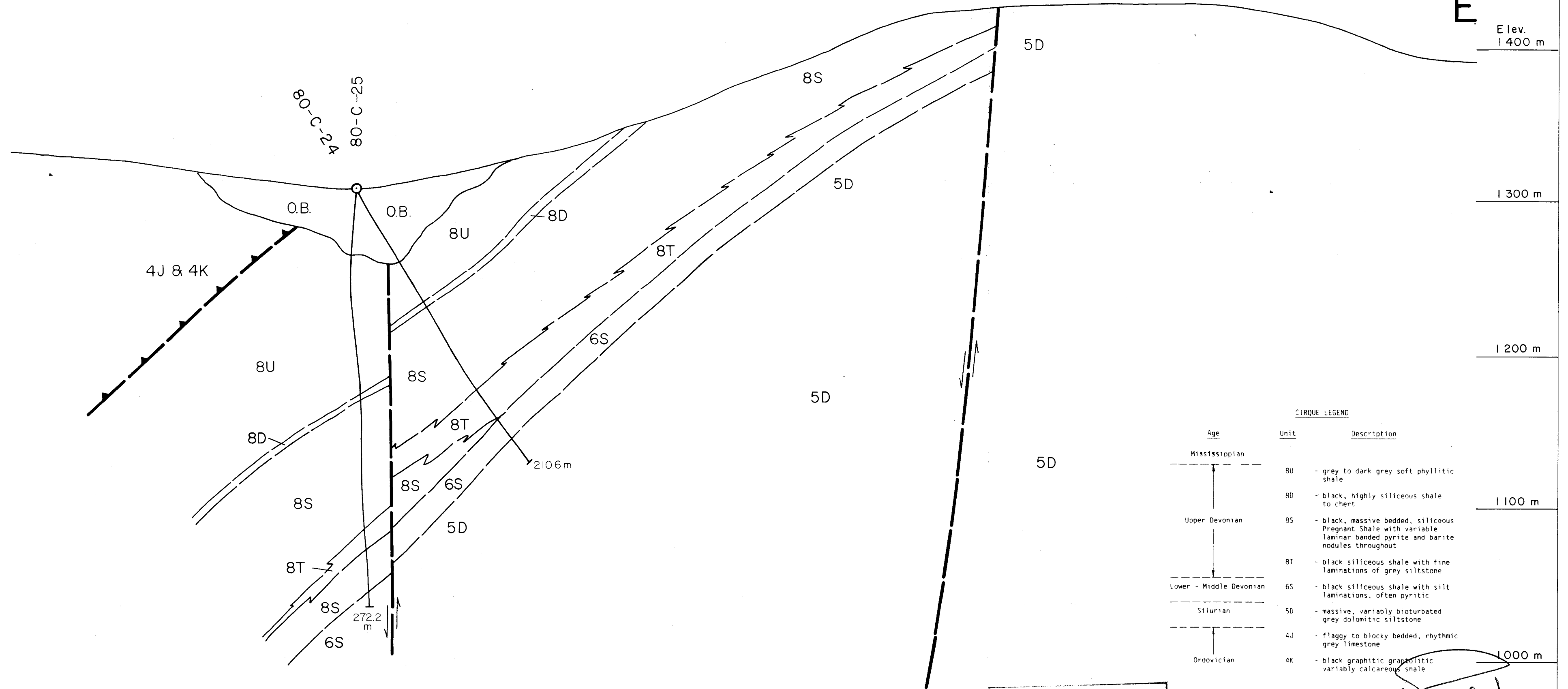
Age	Unit	Description
Mississippian	8U	- grey to dark grey soft phyllitic shale
	8D	- black, highly siliceous shale to chert
Upper Devonian	8S	- black, massive bedded, siliceous Pregnant Shale with variable laminar banded pyrite and barite nodules throughout
	8T	- black siliceous shale with fine laminations of grey siltstone
Lower - Middle Devonian	6S	- black siliceous shale with silt laminations, often pyritic
	5D	- massive, variably bioturbated grey dolomitic siltstone
Silurian	4J	- flaggy to blocky bedded, rhythmic grey limestone
Ordovician	4K	- black graphitic graptolitic variably calcareous shale

ASSESSMENT REPORT
9225
 CYPRUS ANVIL MINING CORPORATION
 CIRQUE CLAIMS
 OMINECA MINING DIVISION - BC.
VERTICAL CROSS SECTION 275 N
 SECTION AT 050° LOOKING NORTHWEST
 0 50 100 150 200
 Scale (1:2,000) Metres
 N.T.S. 94-F-6
 SURVEY BY: WR
 DRAWN BY: rwr
 DATE: June 4, 1981
 MAP # 3

W

E

Elev. 1400 m



CIRQUE LEGEND

Age	Unit	Description
Mississippian	8U	grey to dark grey soft phyllitic shale
	8D	black, highly siliceous shale to chert
Upper Devonian	8S	black, massive bedded, siliceous Pregnant Shale with variable laminar banded pyrite and barite nodules throughout
	8T	black siliceous shale with fine laminations of grey siltstone
Lower - Middle Devonian	6S	black siliceous shale with silt laminations, often pyritic
Silurian	5D	massive, variably bioturbated grey dolomitic siltstone
	4J	flaggy to blocky bedded, rhythmic grey limestone
Ordovician	4K	black graphitic graphitic variably calcareous shale

MINERAL RESOURCES BRANCH
ASSESSMENT REPORT
9225
NO.

CYPRUS ANVIL MINING CORPORATION
CIRQUE CLAIMS
OMINECA MINING DIVISION - B.C.
VERTICAL CROSS SECTION
272 N

SECTION AT 050° LOOKING NORTHWEST

0 50 100 150 200
Scale (1:2,000) Metres

N.T.S. 94--6
SURVEY BY: WR
DRAWN BY: rwr

DATE: June 4, 1981
MAP No. 4