

KENNCO EXPLORATIONS, (WESTERN) LIMITED

REPORT

ON

GEOCHEMICAL SOIL SURVEY AND LINECUTTING

W.D. CLAIMS #1-5

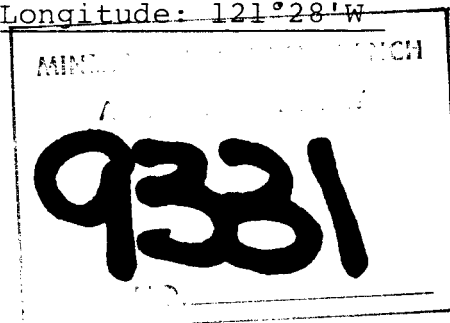
Indianpoint Creek Area,
41.85 kilometres north of Wells, B.C.

Cariboo Mining Division

93H/6

Latitude: 53°29'N

Longitude: 121°28'W



Owner: Kennco Explorations, (Western) Limited

Operator: Kennco Explorations, (Western) Limited

Work Done: October 20 - November 8, 1980

R. S. Pegg

June 8, 1981

Vancouver, B. C.

TABLE OF CONTENTS

	<u>Page</u>
INTRODUCTION	1
LOCATION & ACCESS	1
PREVIOUS WORK	2
GENERAL GEOLOGY & TOPOGRAPHY	2
WORK COMPLETED	2
SOIL SAMPLING & LABORATORY ANALYSIS	3
SUMMARY & CONCLUSIONS	4

APPENDIX I : Statement of Expenditures
APPENDIX II: Statement of Qualifications

PLATES

Index Map	Foll. p.1
Plates #1-4 Mo-W Soil Geochemistry Maps	Pocket
Plates #5-8 Pb-Zn Soil Geochemistry Maps	"
Plates #9-12 Ag Soil Geochemistry Maps	"

KENNCO EXPLORATIONS, (WESTERN) LIMITED

REPORT ON GEOCHEMICAL SOIL SURVEY AND LINECUTTING

INTRODUCTION

The following report is on a geochemical soil survey and linecutting carried out on the W.D. Claims (70 units), Indianpoint Creek area, B. C. This report was written by R.S. Pegg of Kennco Explorations, (Western) Limited and the work was carried out by Bema Industries of Langley, B.C.

LOCATION & ACCESS

The claim group is situated approximately 41.85 kilometres north of Wells, at Latitude 53°29', Longitude 121°28' on N.T.S. map 93H/6, Edition 2MCE, Series A721.

The best mode of transportation to the property is by helicopter, but a new logging road along the west side of Indianpoint Creek comes within a kilometre of the claims.

INDEX MAP

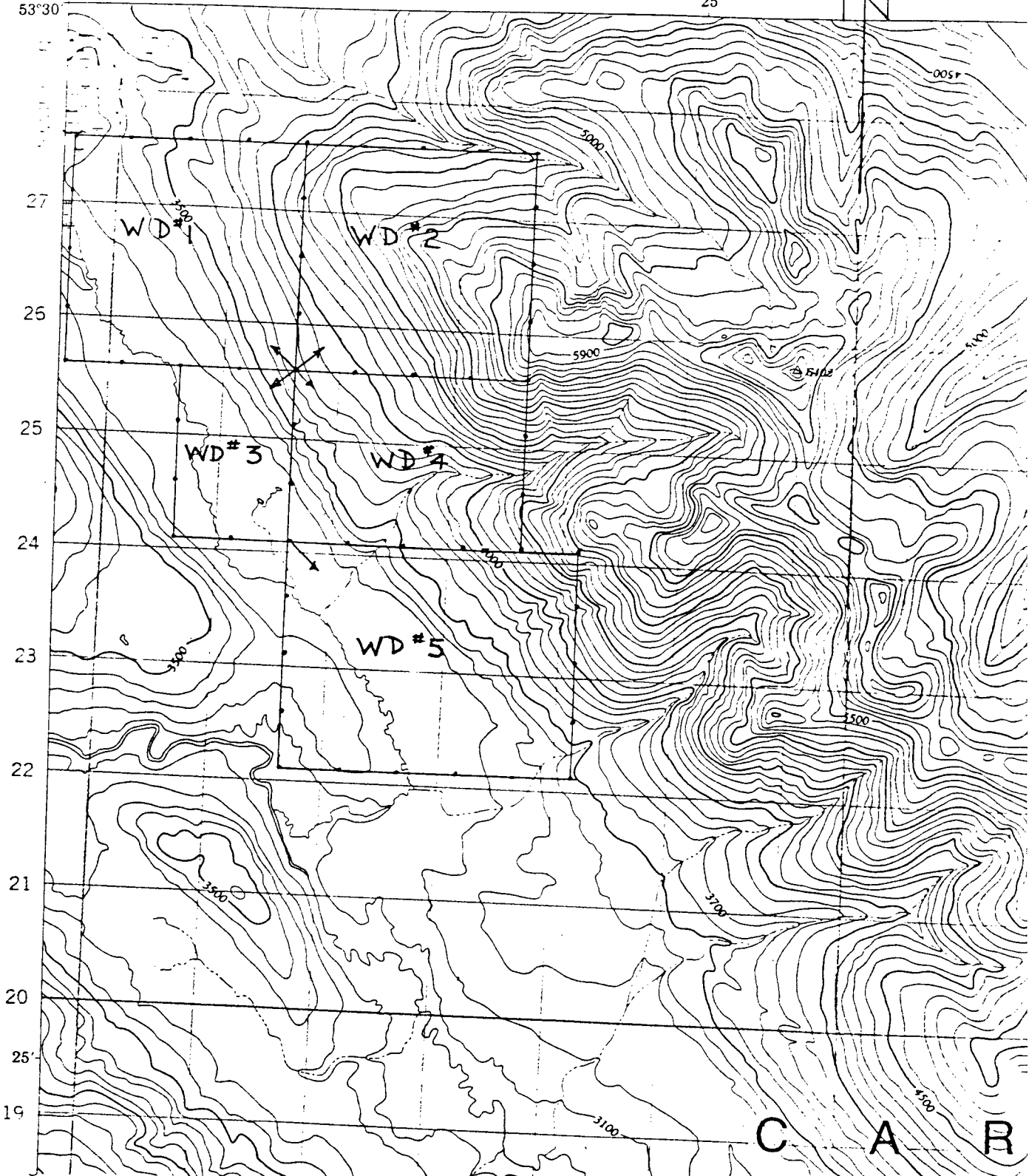
93 H/6

121 30

53°30'

1:50,000

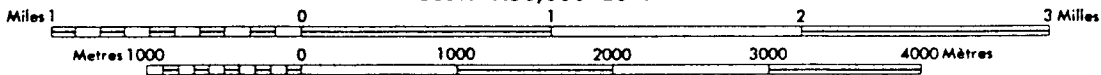
25'



INDIANPOINT LAKE

CARIBOO LAND DISTRICT
BRITISH COLUMBIA

Scale 1:50,000 Échelle



PREVIOUS WORK

No previous work has been reported on this claim area.

GENERAL GEOLOGY & TOPOGRAPHY

The major part of the claim area is covered by overburden. The G.S.C. (Map 1356A) has mapped the eastern region of the claims as being Black Stuart Formation (Lower Devonian and (?) Younger) argillites and breccias. Dome Creek Formation argillites (Lower and Upper Cambrian) and Mural Formation limestones (Lower Cambrian).

Maximum relief in the area is approximately 884 metres. The western portion of the claim area is swamp while to the east the land rises fairly sharply and is well treed.

The primary exploration target on the property is lead-zinc mineralization in the Black Stuart Formation.

WORK COMPLETED

Bema Industries of Langley, B.C. completed the line-cutting and soil sampling during the period October 20 - November 8, 1980. A total of 32.85 line kilometres were blazed and flagged, including 7.26 kilometres within W.D. #1, 8.69 kilometres in W.D. #2, 2.48 kilometres within W.D. #3,

6.93 kilometres in W.D. #4, and 7.49 kilometres within W.D. #5. A total of 617 soil samples were taken. This includes 120 samples from W.D. #1, 159 samples from W.D. #2, 52 samples from W.D. #3, 140 samples from W.D. #4, and 146 samples from W.D. #5.

SOIL SAMPLING & LABORATORY ANALYSIS

A total of 617 soil samples were collected during the geochemical survey. The crew attempted to obtain samples of the 'B' horizon every 50 metres along the NE-SW cut lines but the soil horizon development varied from good to very poor. The samples were sent to Min-En Laboratories Ltd. of North Vancouver for the analysis for silver, lead, zinc, tungsten and molybdenum. The methods of analysis are as follows:

Mo, Pb, Zn & Ag: nitric, perchloric digestion,
A.A. analysis

W: fusion, colorimetric.

SUMMARY & CONCLUSIONS

Statistical analysis shows that the anomalous "cutoff" for the elements are as follows: Pb \geq 80 ppm, Zn \geq 400 ppm, W \geq 10 ppm, Ag \geq 3.0 ppm, and Mo \geq 20 ppm.

The soil sampling program outlined several anomalous areas within the claim boundary. Numerous soils, especially to the east of the baseline, contained anomalous amounts of zinc, as well as several with anomalous amounts of silver, lead and molybdenum and a few containing anomalous amounts of tungsten.

No mineralization was discovered at the time of sampling and the sampling crew evidently saw few outcrops. The large distance between the sampled lines makes contouring impossible, but the relatively high metal values in the soils indicate the presence of mineralization, although hydromorphic processes are possibly enhancing the values. It appears that more detailed sampling and prospecting are the next step in the property evaluation.

June 8, 1981

Vancouver, B.C.



R. S. Peggy, B.A. Sc.

STATEMENT OF EXPENDITURES


1. Labour			
I. Johnson (Operations Mgr)	0.5 days @ \$175/day	= \$	87.50
K. Hansen (Supervisor)	23.5 days @ \$140/day	=	3,525.00
N. Marcy (Field Technician)	22.25 days @ \$130/day	=	2,892.50
D. Harris (" ")	22 days @ \$130/day	=	2,860.00
R. Jordan (" ")	19 days @ \$130/day	=	2,470.00
R. Jordan (Warehouseman)	1 day @ \$ 95/day	=	95.00
			<hr/>
	TOTAL LABOUR COSTS		\$11,930.00
2. Rentals			
Survey Equipment	17 days @ \$15/day	= \$	255.00
Chainsaws	11 days @ \$20/day	=	220.00
Radio	19 days @ \$7.50/day	=	142.50
Fly camp	19 days @ \$40/day	=	760.00
Crewcab	21 days @ \$35/day	=	735.00
	1270 kms at 15¢/km	=	190.50
			<hr/>
	TOTAL RENTAL COSTS		\$ 2,303.00
3. Helicopter costs		= \$	4,470.00
4. Food costs		=	966.76
5. Camp fuel		=	37.43
6. Truck gas		=	151.35
7. Water Buckets		=	28.00
8. Flagging		=	119.60
9. Hip Chain Thread		=	57.75
10. Motel Room (during trip to property from Vancouver)		=	37.80
11. Motel Room (during trip from property to Vancouver)		=	67.20
12. Meals (during mobilization & demobilization)		=	78.65
13. Plane Fare (R. Jordan, Quesnel to Vancouver)		=	73.05
14. Drafting		=	2,460.50
15. Geochemical Analysis:			
617 soils for Pb,Zn,Ag,W & Mo @ \$7.75/sample			
+ sample preparation @ \$0.60/sample		=	5,151.95
16. Compilation, Report Writing & Printing		=	400.00
			<hr/>
	TOTAL EXPENDITURES		\$28,333.04
			<hr/> <hr/>

STATEMENT OF QUALIFICATIONS

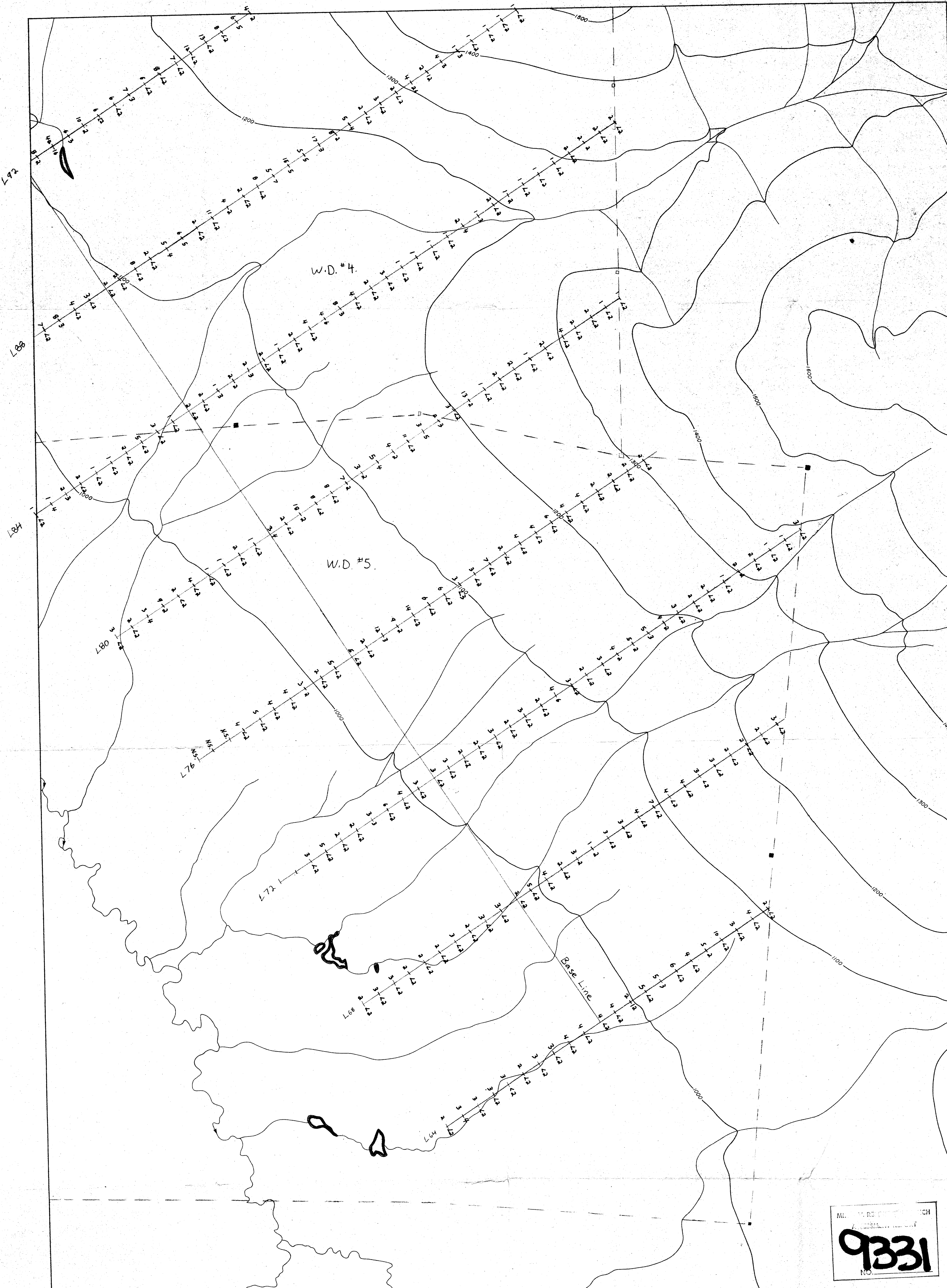
Rex Stephen Pegg: Exploration Geologist,
Kennco Explorations, (Western) Limited.

- (1) Completed BAsC at the University of Toronto in 1976.
- (2) Employed by Willroy Mines Ltd as mine geologist in 1976-77; by Long Lac Mineral Explorations as a project geologist in 1977-80; by Kennco Explorations, (Western) Limited from April 1980 to present, under the supervision of C.J. Westerman, Ph.D.

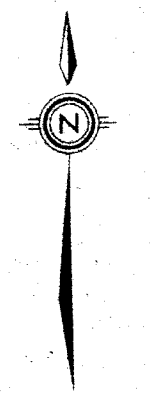
June 8, 1981



R. S. Pegg, BAsC.



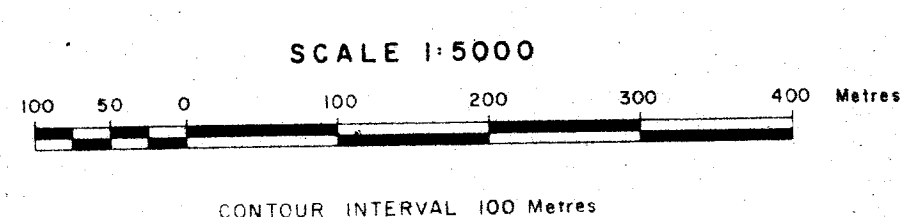
ML. 9331
NO.



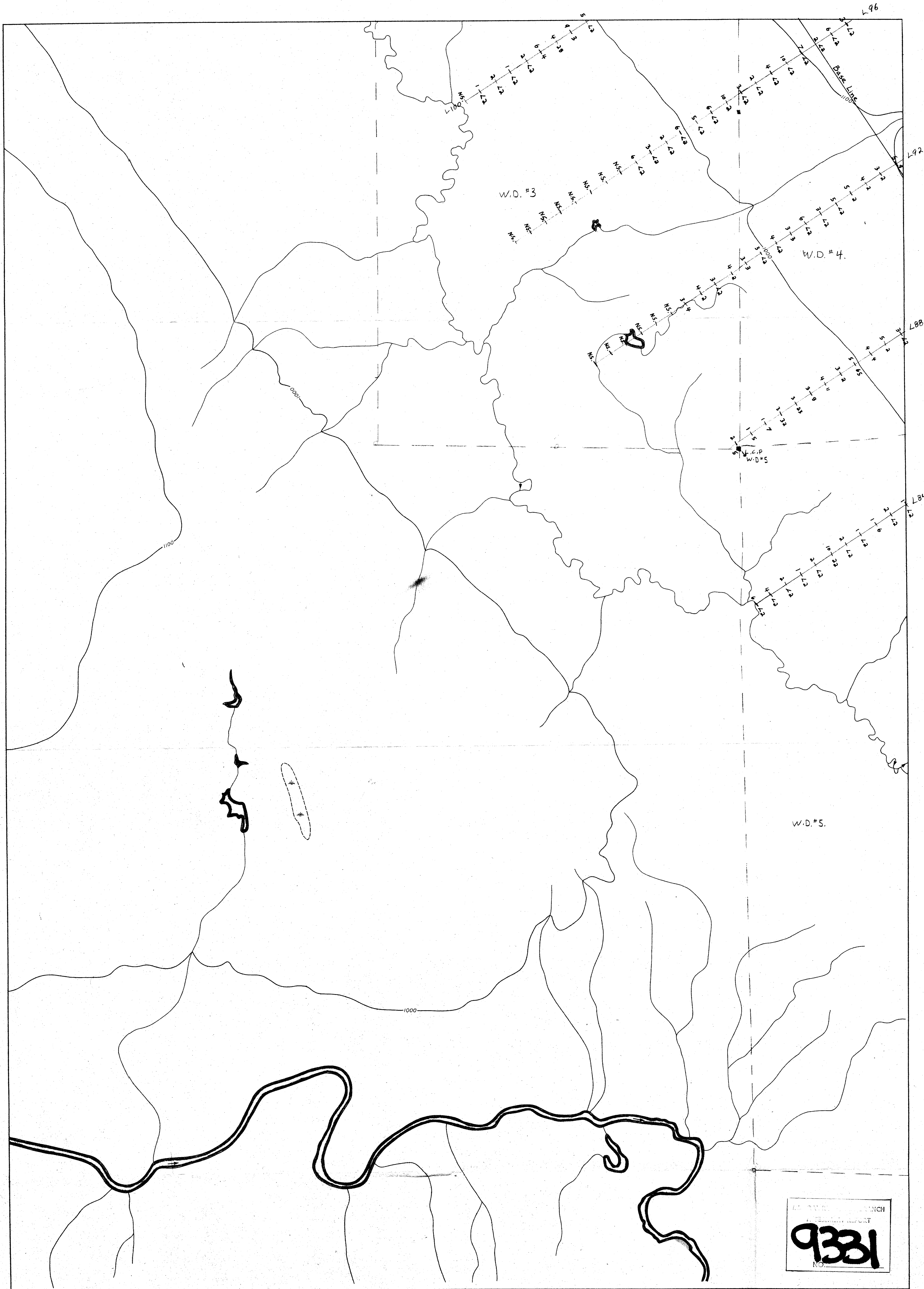
LEGEND

- Mo (ppm) + W (ppm)
- No sample NS.
- Claim Line
- Claim Post.
- LCP Legal Corner Post.

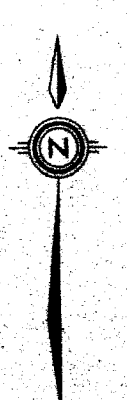
3	4
2	1



KENNCO EXPLORATIONS (WESTERN) LTD.	
HAGGEN CREEK	
GEOCHEMISTRY	
SOILS. #1	
Mo/W (ppm)	
SHEET 1 OF 4 <i>Reno</i>	
DATA BY	N.T.S. 93 H/6 PL. NO.
DRAWN BY EDS	DATE: FEB. 1981
TRACED BY	SCALE
REVISIONS	1 : 5,000



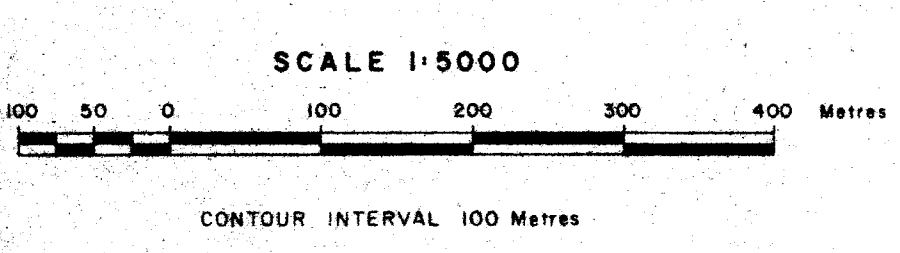
9331



LEGEND

- Mo (ppm) W (ppm)
- No Sample NS
- Claim Line.
- Claim Post. } observed.
- LCP Legal Corner Post.

3	4
2	1



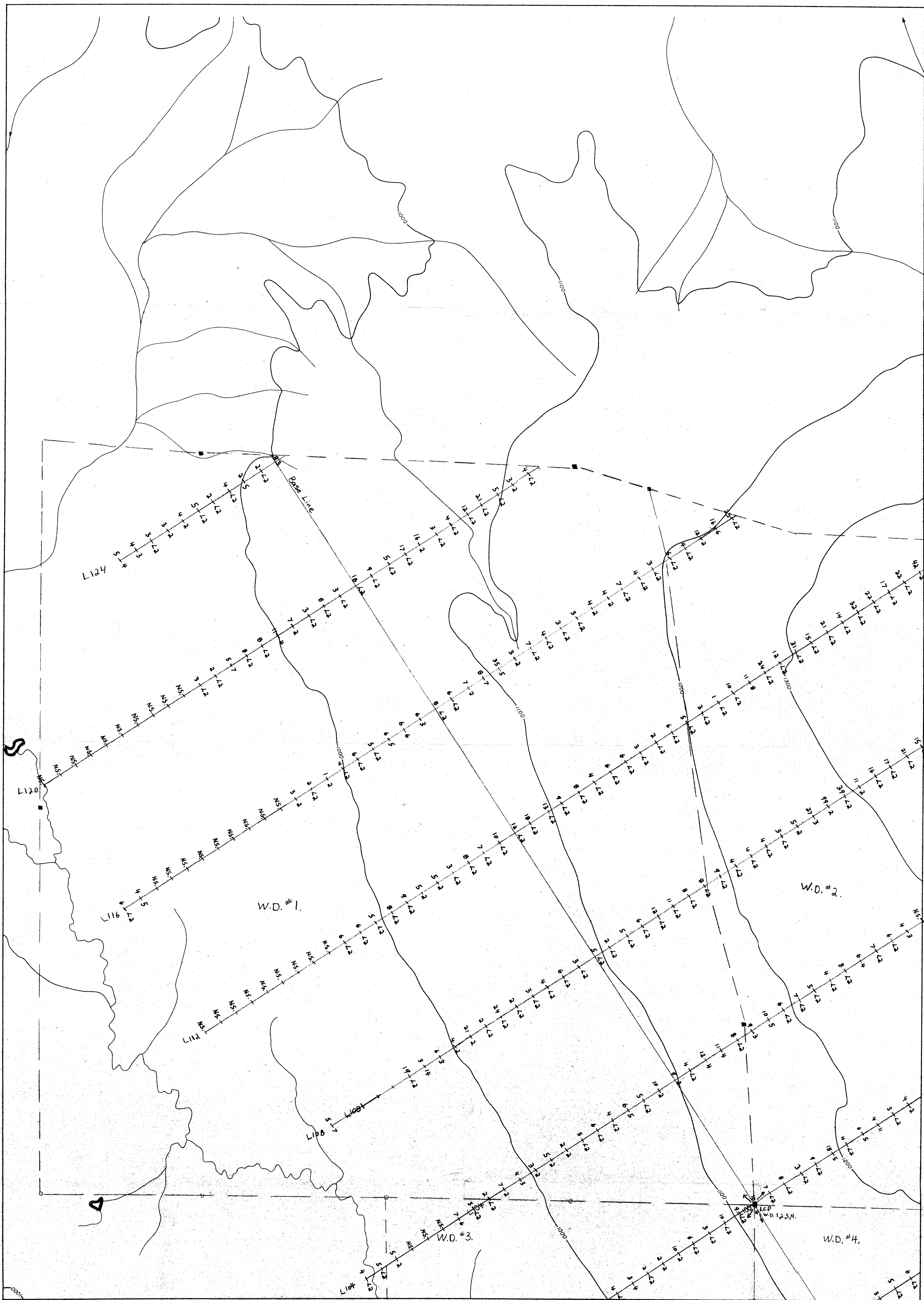
KENNCO EXPLORATIONS (WESTERN) LTD.

HAGGEN CREEK
GEOCHEMISTRY
SOILS.

Mo/W (ppm) #2

SHEET 2 OF 4

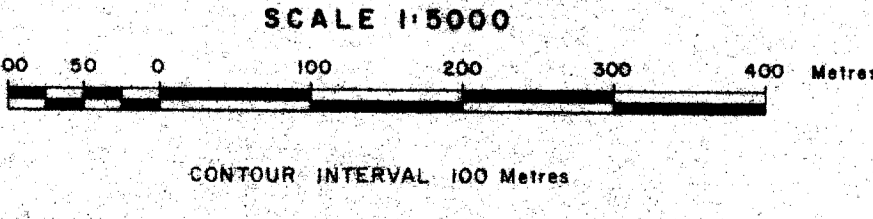
DATA BY:	N.T.S. 93 H/6	PL. NO.
DRAWN BY: E.D.S.	DATE: FEB. 1981	SCALE:
TRACED BY:	DATE:	1 : 5,000
REVISIONS:		



LEGEND

- Mo (ppm) W (ppm)
- No Sample NS
- Claim Line
- Claim Post
- LCP Legal Corner Post

2	1	4	3



KENCO EXPLORATIONS (WESTERN) LTD.

HAGGEN CREEK

GEOCHEMISTRY

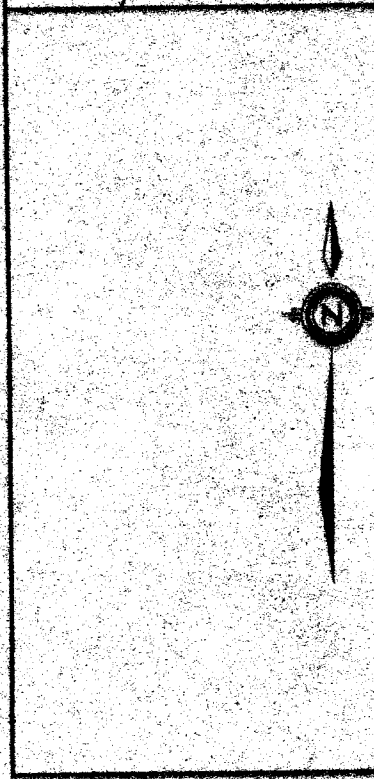
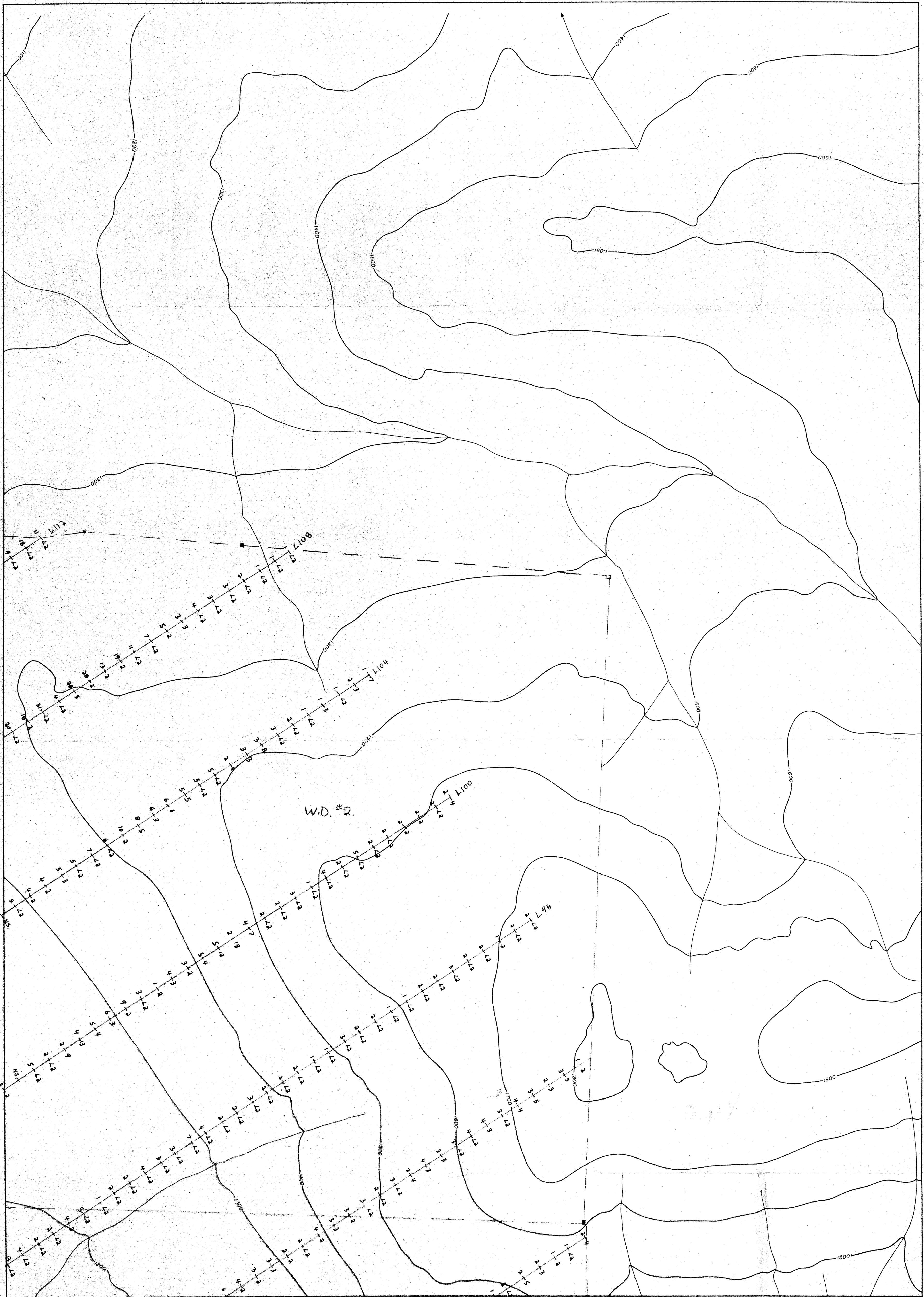
SOILS #3

Mo/W (ppm)

SHEET 3 OF 4 *Pat Page*

DATA BY:	N.T.S. 93 H/6	PL. NO.
DRAWN BY: E.D.S.	DATE: FEB. 1981	SCALE:
TRACED BY:	DATE:	1 : 5,000
REVISIONS:		

MIN. QUANTITY FINANCIAL
 9331
 NO.



LEGEND

No Sp. (W ppm)
No Sample NS

--- Claim Line

■ Claim Post

■ LCP (Legal Corner Post)

3 2 1

observed

SCALE 1:5000

100 200 300 400 Metres

CONTOUR INTERVAL 100 Metres

KENNCO EXPLORATIONS (WESTERN) LTD.

HAGGEN CREEK

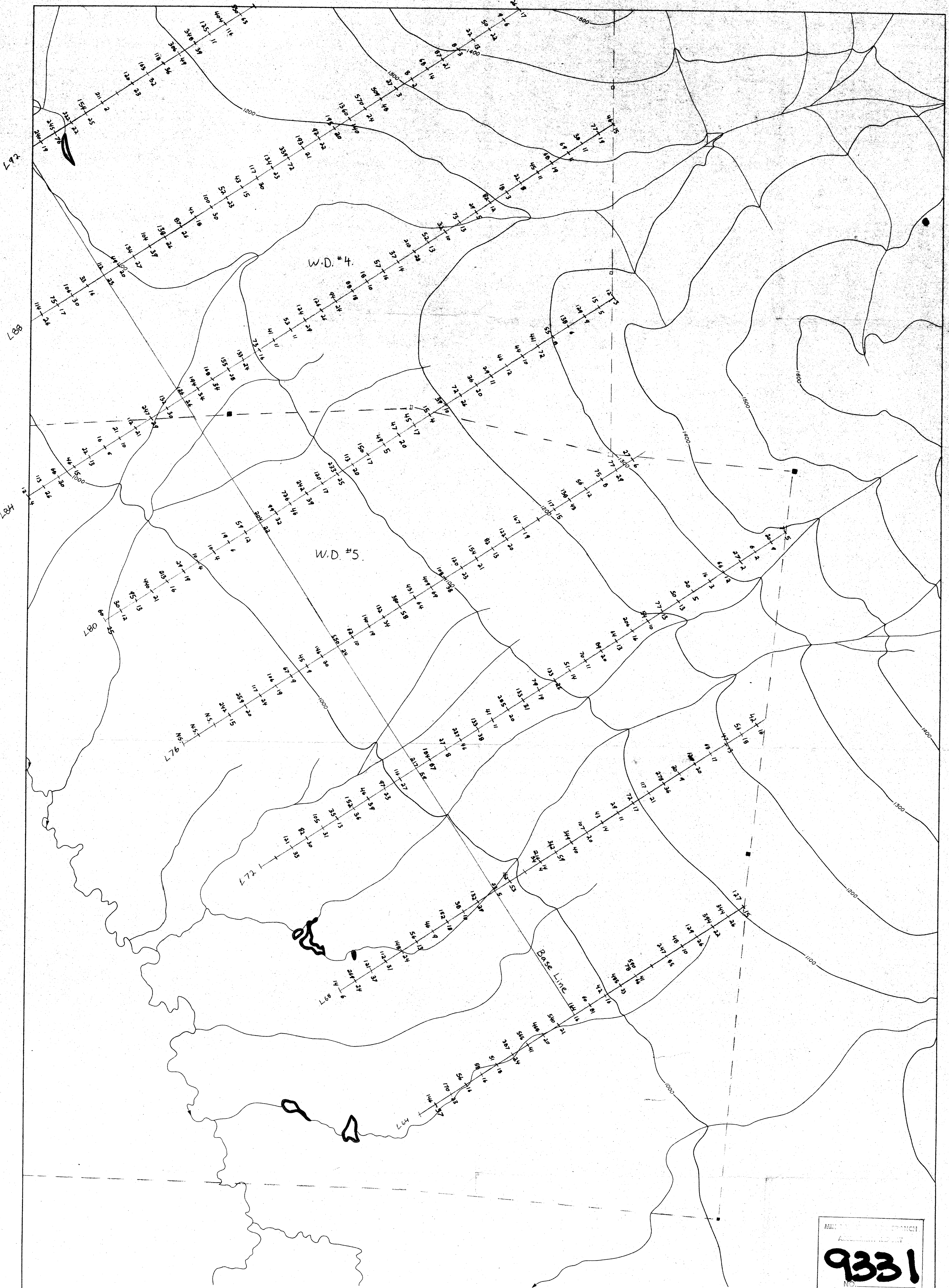
**GEOCHEMISTRY,
SOILS.**

Mo/W(ppm) #4

SHEET 4 OF 4 *Ranney*

DATA BY:	NTS 93 H/6	PL NO.
DRAWN BY: EDS	DATE: FEB 1981	SCALE:
TRACED BY:	DATE:	1 : 5,000
REVISIONS:		

MINERAL RESOURCES BRANCH
ANNUAL REPORT
9331
110



MINERAL BRANCH
9331
 NS

LEGEND

Zn (ppm) Pb (ppm)

No sample NS

— Claim Line

■ Claim Post

■ L.C.P. Legal Corner Post

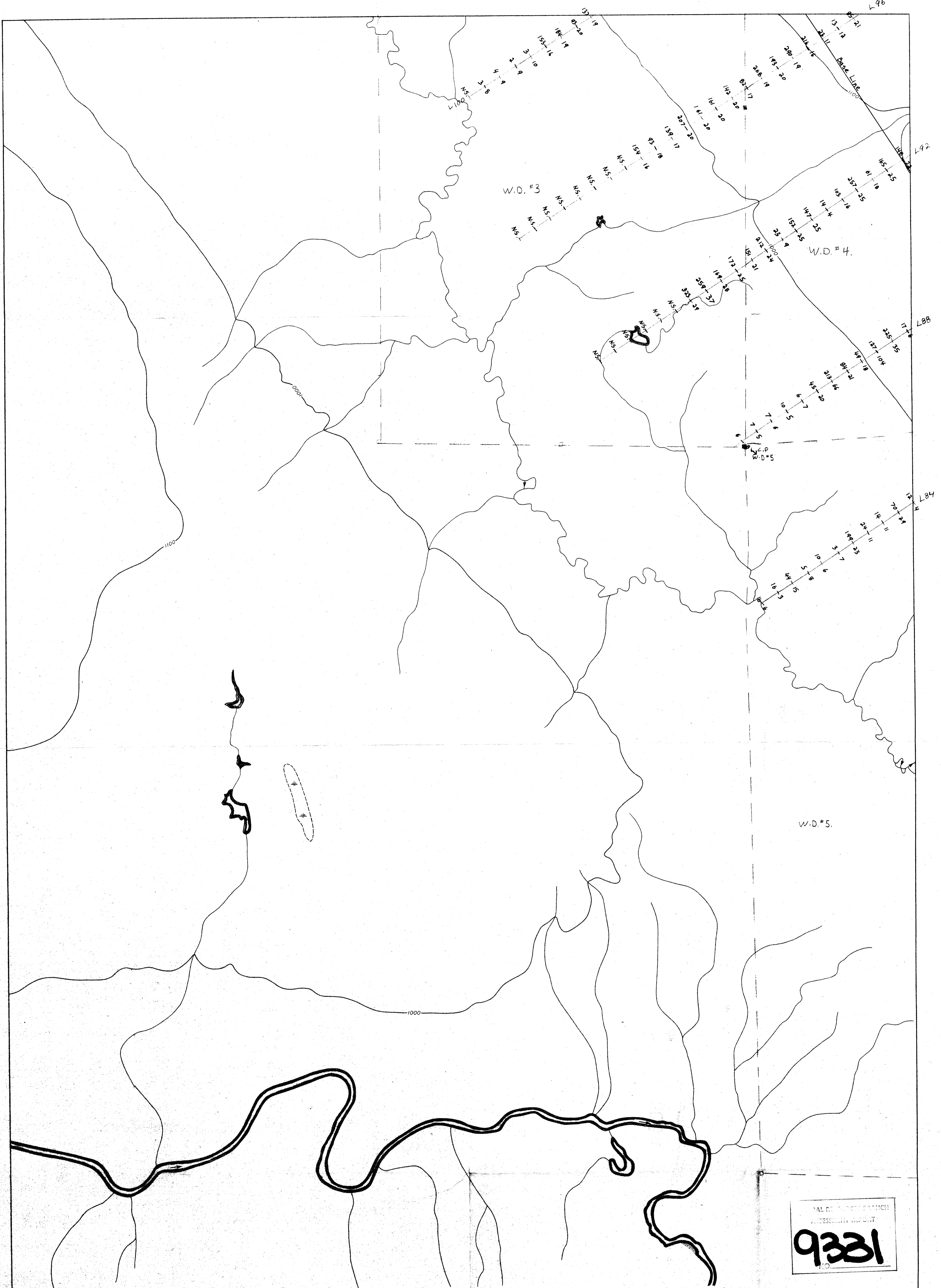
observed.

3	4
2	1

SCALE 1:5000

CONTOUR INTERVAL 100 Metres

KENNCO EXPLORATIONS (WESTERN) LTD.			
HAGGEN CREEK			
GEOCHEMISTRY			
SOILS #5			
Pb/Zn (ppm)			
SHEET 1 OF 4 <i>Raw</i>			
DATA BY	N.T.S. 93 H/6	PL. NO.	
DRAWN BY E.D.S.	DATE FEB. 1981	SCALE	
TRACED BY	DATE	1 : 5,000	
REVISIONS			



VALLEY RIVER BRANCH
 ASSOCIATED REPORT
9331



LEGEND

Zn (ppm) Pb (ppm)
 No Sample NSm

3	4
2	1

Claim Line
 Claim Post. (observed)
 LCP (Legal Corner Post)

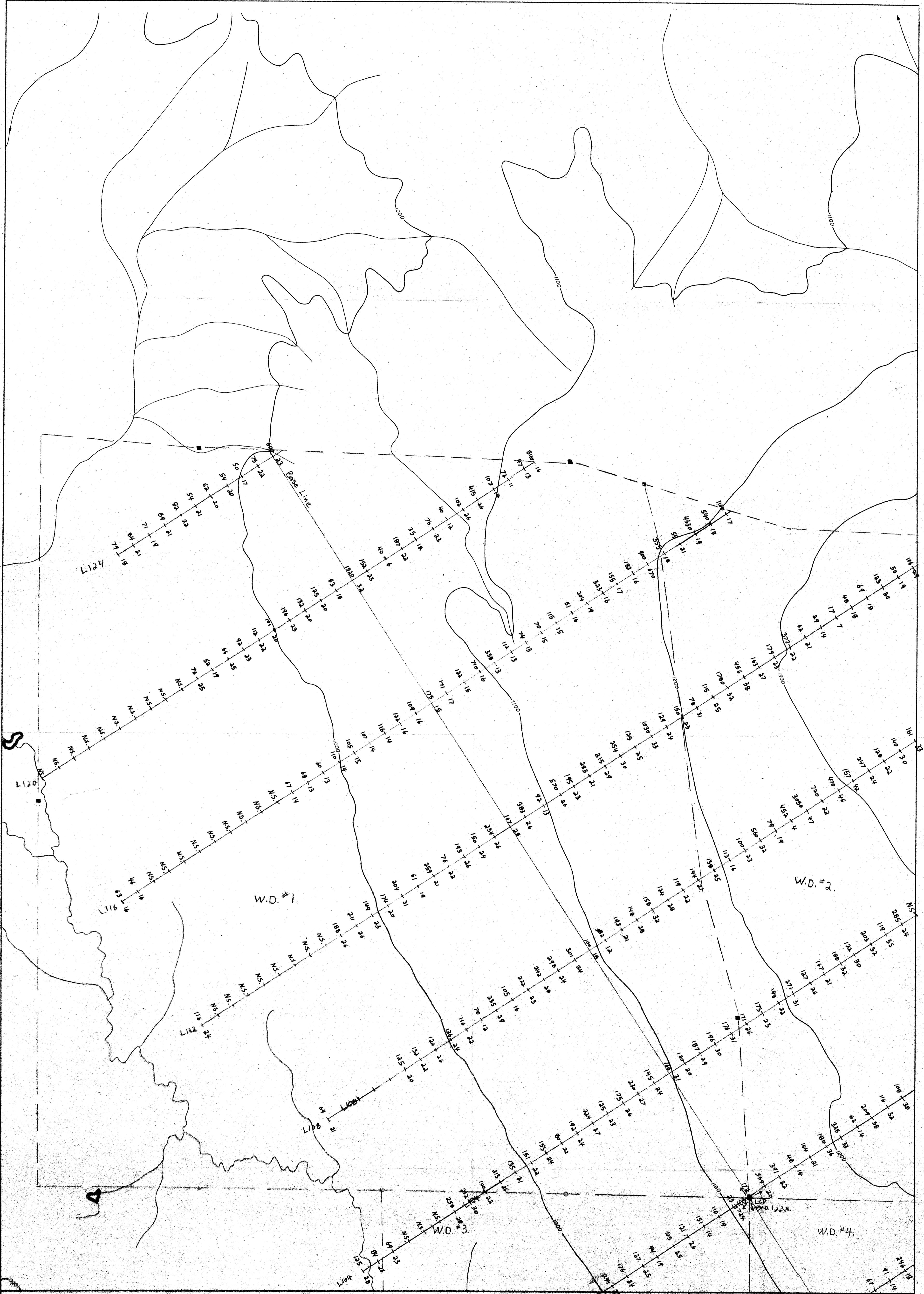
SCALE 1:5000

100 200 300 400 Metres

CONTOUR INTERVAL 100 Metres

KENNCO EXPLORATIONS (WESTERN) LTD.
HAGGEN CREEK
 GEOCHEMISTRY
 SOILS #6
 Pb/Zn (ppm)
 SHEET 2 OF 4

DATA BY: N.T.S. 93 H/6 PL. NO.
 DRAWN BY: E.D.S. DATE: FEB. 1981 SCALE: 1:5,000
 TRACED BY: DATE:
 REVISIONS:



LEGEND

Zn (ppm) Pb (ppm)

No sample N.S.

--- Claim Line.

■ Claim Post.

■ LCP Legal Corner Post.

Observed

SCALE 1:5000

100 0 100 200 300 400 Metres

CONTOUR INTERVAL 100 Metres

KENCO EXPLORATIONS (WESTERN) LTD.

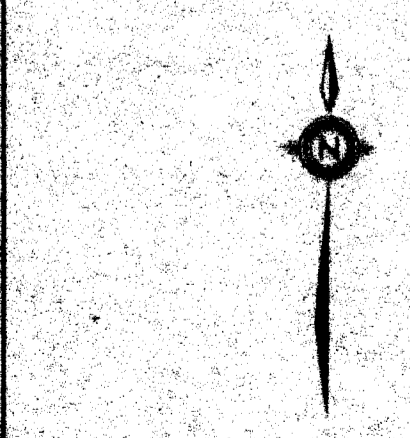
HAGGEN CREEK

GEOCHEMISTRY
SOILS

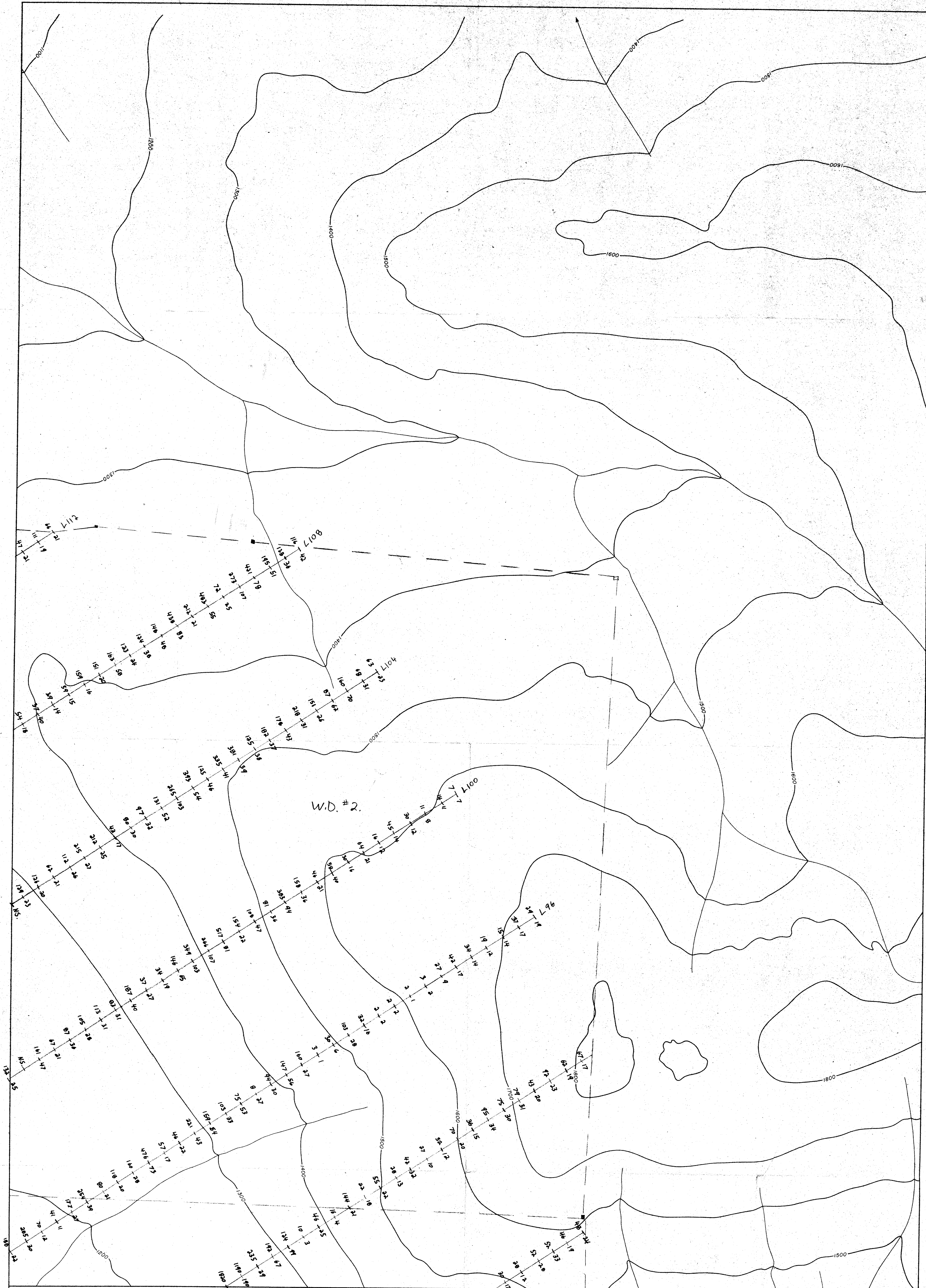
Pb/Zn (ppm) #7

SHEET 3 OF 4

DATA BY:	N.T.S. 93 H/6	PL. NO.
DRAWN BY: E.O.S.	DATE: FEB. 1981	SCALE:
TRACED BY:	DATE:	1 : 5,000
REVISIONS:		



MINERAL RESOURCES BRANCH
ASSESSMENT REPORT
9331



LEGEND

Zn (ppm) - Pb (ppm)

No sample NS

Claim Line

Claim Post

LCP Legal Corner Post

Observed

SCALE 1:5000

100 50 0 100 200 300 400 Metres

CONTOUR INTERVAL 100 Metres

KENNCO EXPLORATIONS (WESTERN) LTD.

HAGGEN CREEK

GEOCHEMISTRY

SOILS #8

Pb/Zn (ppm)

SHEET 4 OF 4

DATA BY: N.T.S. 93 H/6 PL. NO.

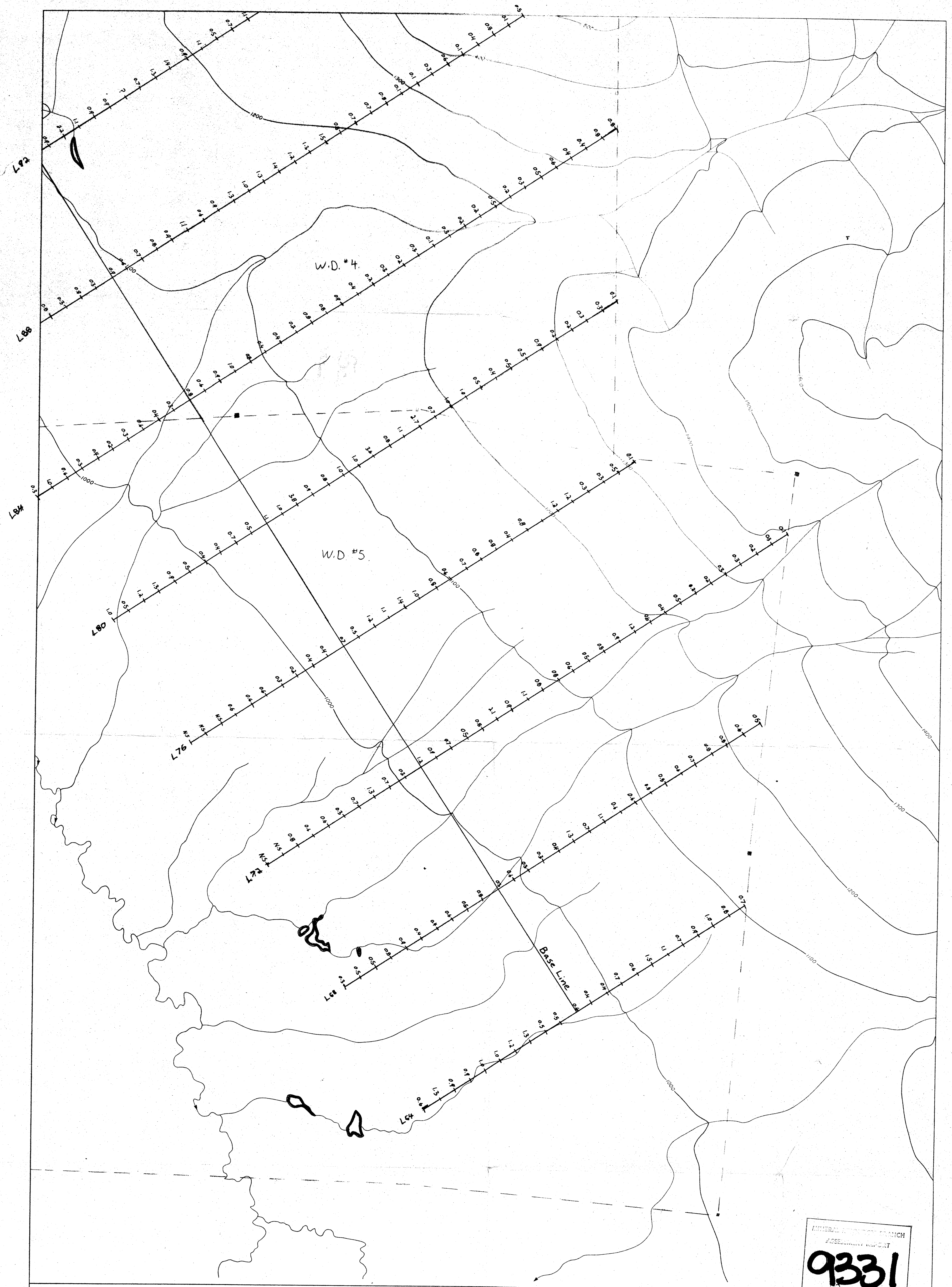
DRAWN BY: E.D.S. DATE: FEB. 1981 SCALE:

TRACED BY: DATE:

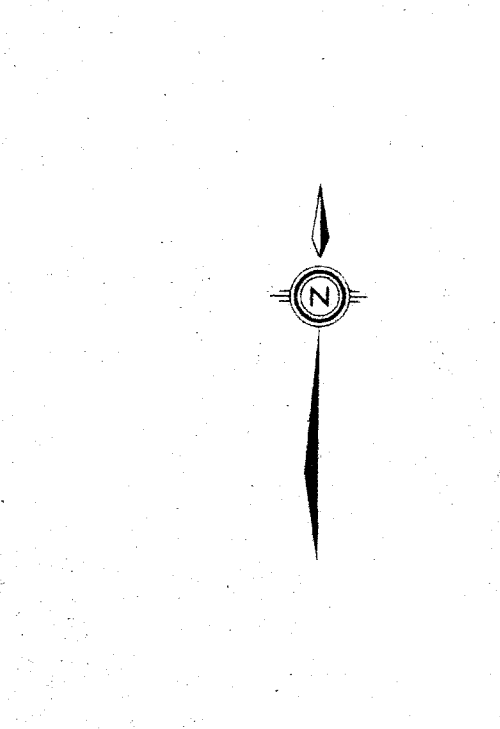
REVISIONS:

1:5,000

MINERAL RESOURCES BRANCH
ASSESSMENT REPORT
9331
NO.



MINERAL INVESTIGATION BRANCH
 ACCESSORY REPORT
9331



Legend:

Ag (ppm)

NS. No Sample

--- Claim Line

■ Claim Post

■ LCP Legal Corner Post

observed.

SCALE 1:5000

3	4
2	1

100 50 0 100 200 300 400 Metres

CONTOUR INTERVAL 50 METRES

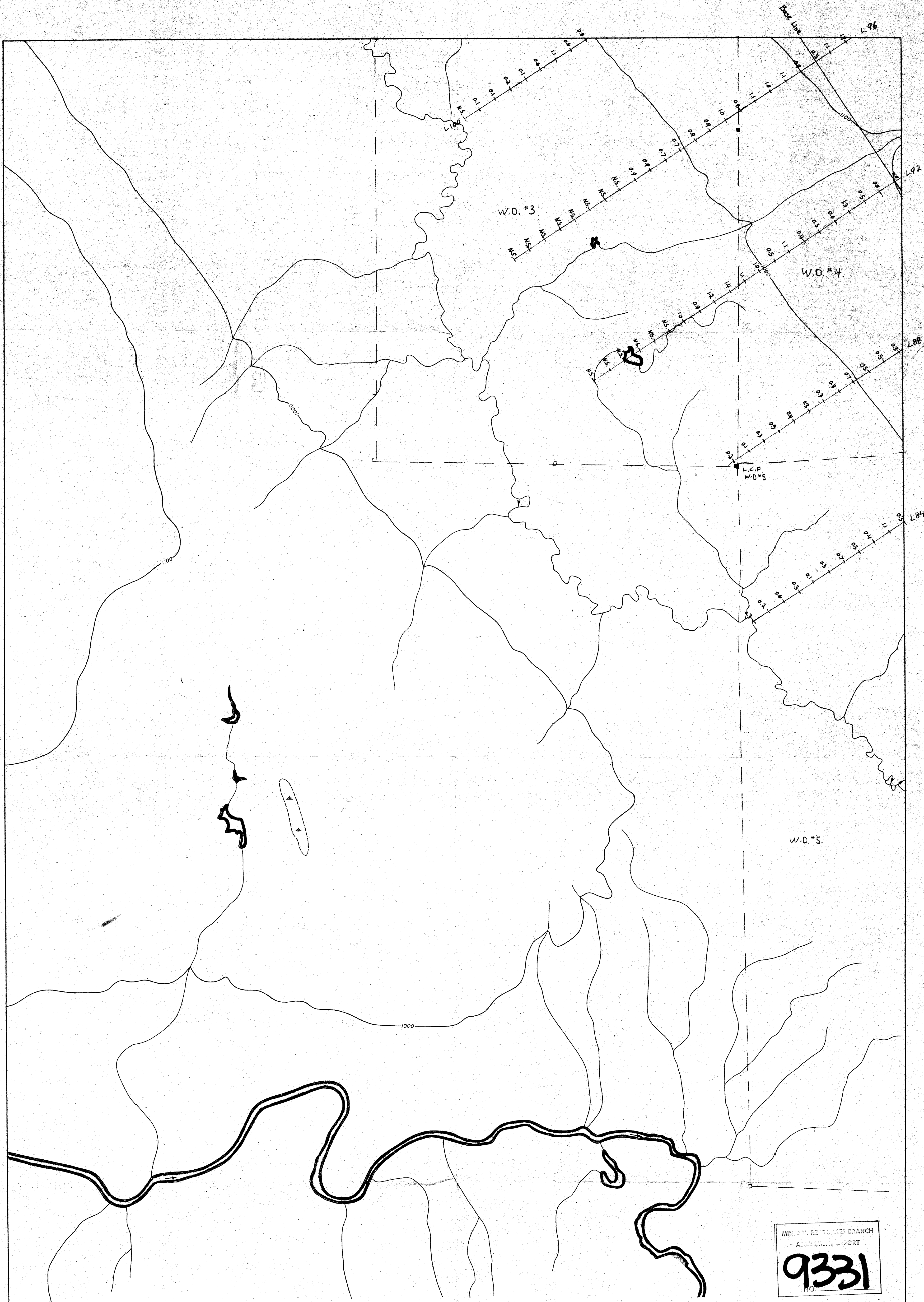
KENNCO EXPLORATIONS (WESTERN) LTD

HAGGEN CREEK

Geochem. (Soils)
 Ag (ppm) #9

SHEET 1 OF 4

DATE	EDS	DATE FEB 1981
SCALE	1:5000	



MINERAL RIGHTS BRANCH
ACCESSIBILITY REPORT
9331
NO.



LEGEND

Ag (ppm) | 3 | 4
 No Sample NS- | 2 | 1

--- Claim Line
 ■ Claim Post } observed.
 ■ LCP Legal Corner Post

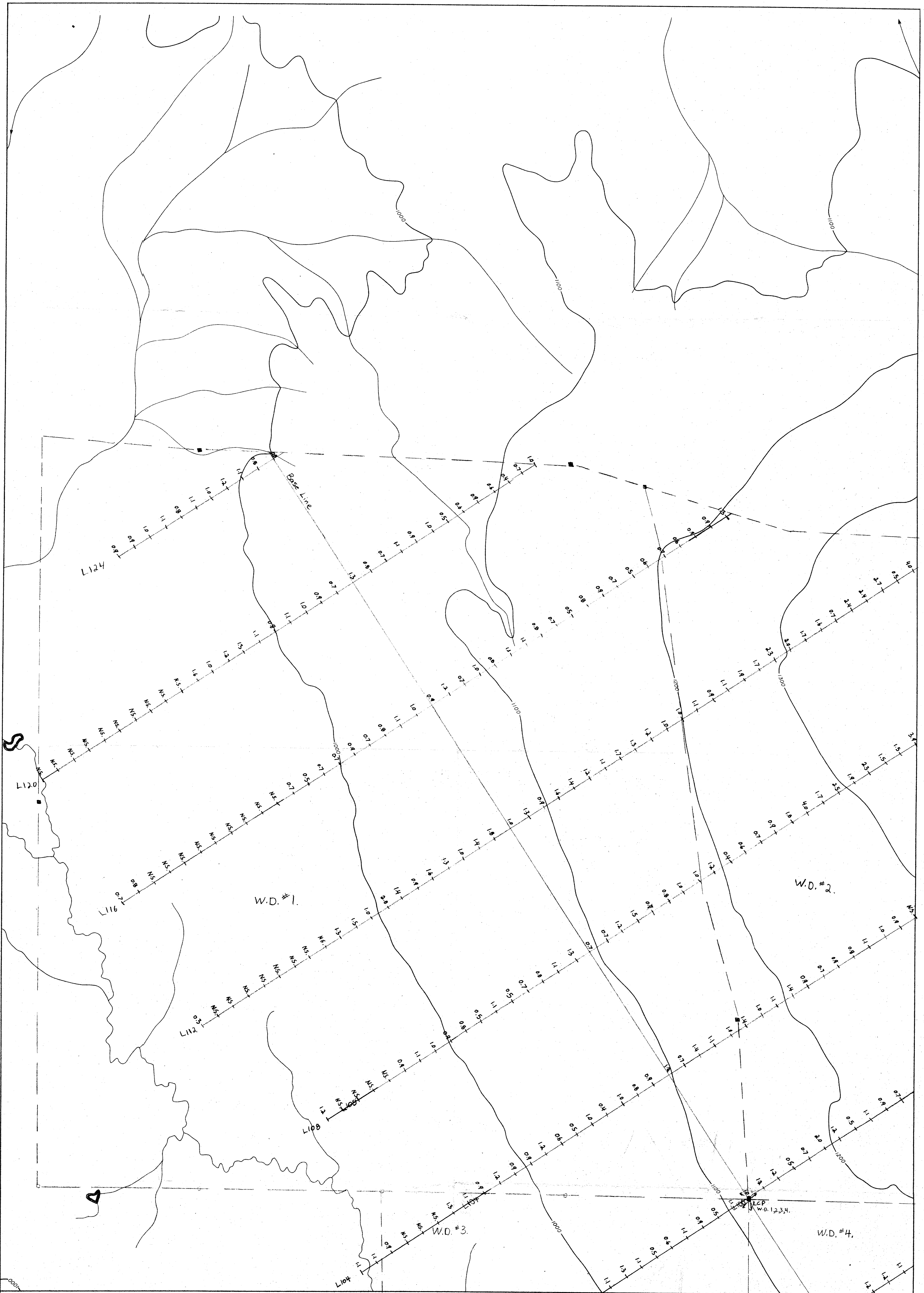
SCALE 1:5000

100 50 0 100 200 300 400 Metres

CONTOUR INTERVAL 100 Metres

KENCO EXPLORATIONS (WESTERN) LTD.
 HAGGEN CREEK
 GEOCHEMISTRY,
 SOILS.
 Ag (ppm) #10
 SHEET 2 OF 4

DATA BY:	N.T.S. 93 H/6	PL NO.
DRAWN BY: E.D.S.	DATE: FEB. 1981	SCALE
TRACED BY:	DATE:	1 : 5,000
REVISIONS:		



LEGEND

Ag (ppm)
 No sample NS.

→ Claim Line
 ■ Claim Post
 ■ LCP Legal Corner Post } observed.

SCALE 1:5000

100 50 0 100 200 300 400 Metres

CONTOUR INTERVAL 100 Metres

KENNCO EXPLORATIONS (WESTERN) LTD.

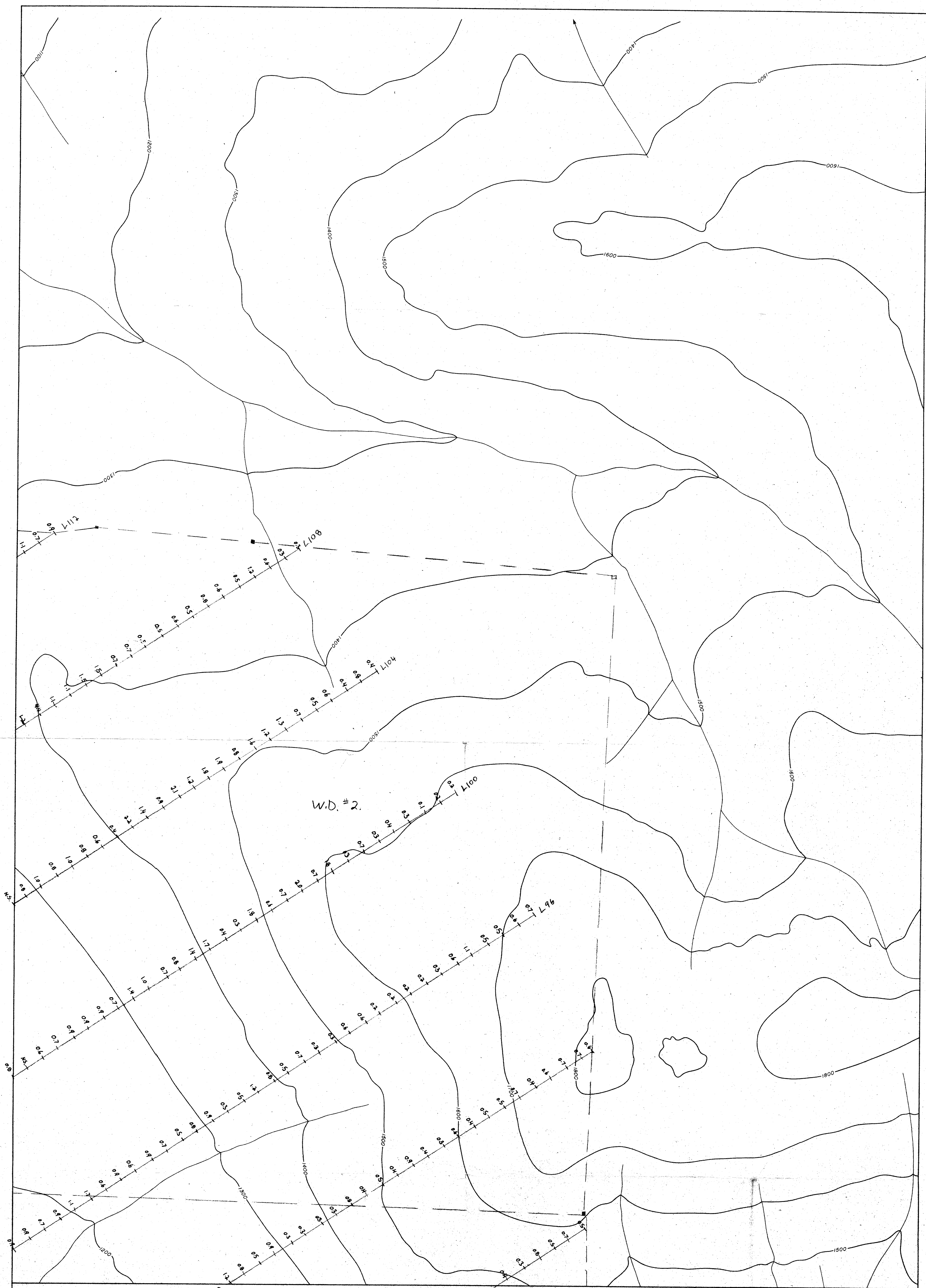
HAGGEN CREEK

GEOCHEMISTRY
 SOILS #11
 Ag (ppm)

SHEET 3 OF 4

DATA BY:	E.D.S.	DATE:	FEB. 1981	N.T.S.	93 H/6	PL NO.
TRACED BY:		DATE:		SCALE:		
REVISIONS:					1	5,000

MINERAL RESOURCES BRANCH
 ASSESSMENT REPORT
9331
 NO.



LEGEND.

Ag (ppm)

No sample N.S.

Claim Line

Claim Post

LCP - Legal Corner Post.

SCALE 1:5000

100 50 0 100 200 300 400 Metres

CONTOUR INTERVAL 100 Metres

KENNCO EXPLORATIONS (WESTERN) LTD.

HAGGEN CREEK

GEOCHEMISTRY SOILS #12

Ag (ppm)

SHEET 4 OF 4

DATA BY:	N.T.S. 93 H/6	PL. NO.
DRAWN BY: E.D.S.	DATE: FEB. 1981	SCALE:
TRACED BY:	DATE:	1 : 5,000
REVISIONS:	ASSESSMENT REPORT	

9331

NO.