

626
81-#202-9390

ASSESSMENT REPORT

1981 GEOCHEMICAL SURVEY OVER

TY 2 MINERAL CLAIM

Lillooet Mining Division

920-2W

Latitude: 51°04' Longitude: 122°48'

WESTMIN RESOURCES LIMITED

(formerly Western Mines Limited)

DEL W. FERGUSON

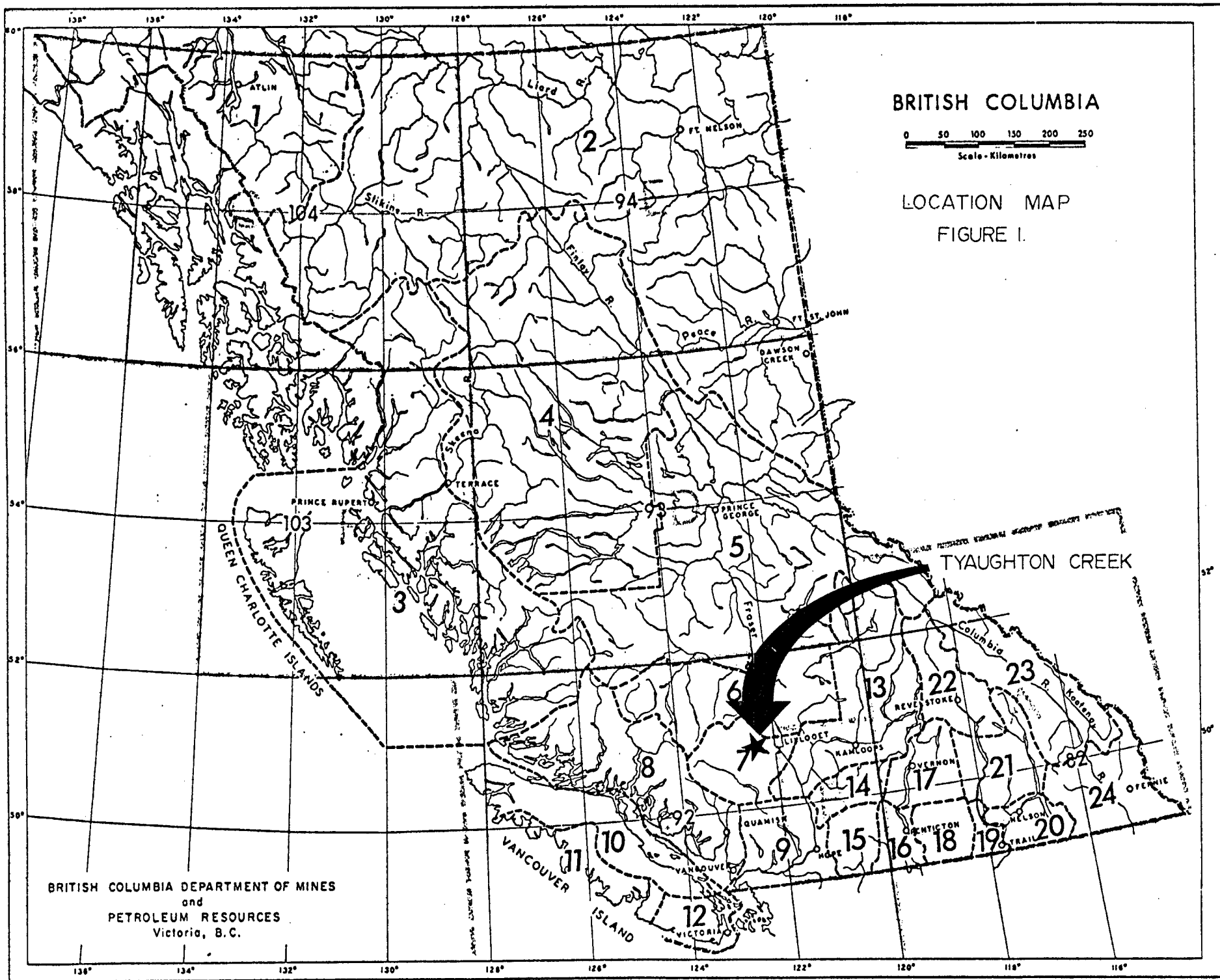
JUNE 1981

TABLE OF CONTENTS

	<u>PAGE</u>
INTRODUCTION	1
GEOCHEMICAL SURVEY	2
ANALYSES	2
GEOLOGY & MINERALIZATION	2
INTERPRETATION	2
ITEMIZED COST STATEMENT	3
STATEMENT OF QUALIFICATION	4

LIST OF FIGURES

1. LOCATION MAP
2. CLAIM LOCATION MAP
3. SAMPLE LOCATION MAP
4. GEOCHEM - TUNGSTEN
5. GEOCHEM - ANTIMONY
6. GEOCHEM - MERCURY



BRITISH COLUMBIA

0 50 100 150 200 250
Scale - Kilometres

LOCATION MAP
FIGURE I.

BRITISH COLUMBIA DEPARTMENT OF MINES
and
PETROLEUM RESOURCES
Victoria, B.C.

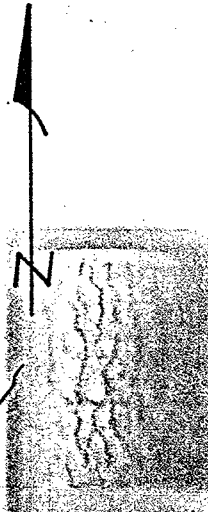
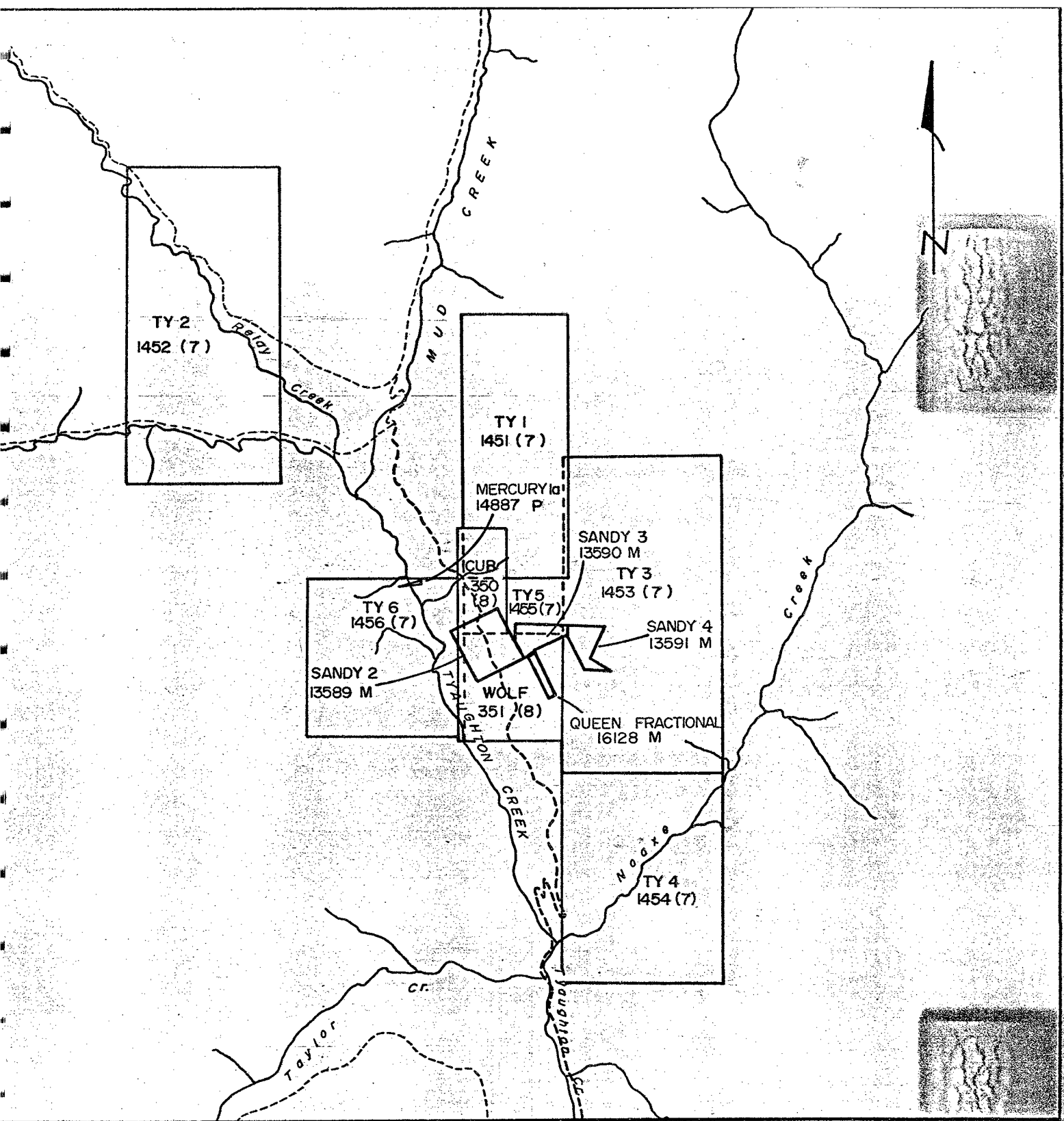
INTRODUCTION

The TY 2 claim is situated at the junction of Tyaughton and Relay Creeks in the Chilcotin Range of the Coast Mountains. Elevation ranges between 1,190 metres and 1,400 metres. The slopes are generally forest-covered with pine. There is abundant wind fall along the steep northeast-facing slope adjacent to Relay Creek.

Access to the claim is via gravel road for 21.5 kilometres north of Carpenter Lake. The town of Goldbridge lies 33 kilometres to the south.

This region has been explored for many mineral commodities - mercury, stibnite, scheelite, gold, silver, lead and zinc. Approximately 1,500 lbs. of mercury was produced by Empire Mercury Mines in 1938. Between 1939 and 1942 about 19 tons of hand-cobbed ore was shipped from the Tungsten Queen and Tungsten King workings.

Interest in the area was renewed around the mid-sixties. Between 1964 and 1966, surface trenching, mine rehabilitation, percussion drilling and underground drilling was performed by Empire Mercury Corporation Ltd. on the old Empire Mercury Mines claims. In 1965, Canex undertook a regional exploration program centred around the Tungsten Queen minesite. A soil and silt geochemical survey, magnetometer survey, prospecting, mapping and trenching were carried out by Bethlehem Copper Corporation Ltd. in 1968 in the general vicinity. The TY 2 claim was recorded for Western Mines Limited on July 23, 1980.



LEGEND



Creek



Trail



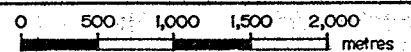
Road

SANDY 4
13591 M

Claim Name
Record Number, Month

WESTERN MINES LIMITED

**TYAUGHTON CREEK PROJECT
CLAIM LOCATION MAP**



SCALE 1:50,000

Date: Oct '80	Drawn by: L. Connor	Revised:	N.T.S. No. 92-0-2
---------------	---------------------	----------	-------------------

FIGURE 2.

GEOCHEMICAL SURVEY

A 2 kilometre baseline trending 320° was established over the TY 2 claim on May 13, 1981. Subsequently approximately 2.5 kilometers of cross lines were run across the baseline. A total of 97 soil samples were collected over the grid. A mattock was used to sample the "B" soil horizon to depths of 0.15 to 0.3 metres. Roots and wood chips were removed to prevent contamination.

ANALYSES

The soil samples were analysed by Min-En Laboratories Ltd. of North Vancouver, B. C., being first sieved to a minus 80 mesh. All samples were analysed for W, Sb and Hg. Tungsten and antimony values are reported in ppm, mercury values in ppb. The methods of analysis used were: Hg - Flameless Atomic Absorption; Sb - Aqua Regia Atomic Absorption; W - Fusion Colorimetric.

GEOLOGY AND MINERALIZATION

The TY 2 claim is underlain by rocks assigned by H.W. Tipper (O.F. 534) to Middle Triassic or older Bridge River group consisting of cherty and shaley argillites, siliceous dolomites, limestones, basalt, greywackes and ultramafics. Conglomerates which may belong to the unconformably overlying Taylor Creek Group outcrop in the northwest claim area. A feldspar-biotite porphyry unit appears to cut all rocks in the general area. No mineralization has been noted to date over the claim.

INTERPRETATION

Anomalous values for tungsten, antimony and mercury exceed 4 ppm W, 60 ppm Sb and 1000 ppb Hg. Contouring of the soil geochemical data delineates one major coincident W-Sb-Hg anomaly in the vicinity of 14+00N to 18+50N on the grid. A much smaller coincident anomaly occurs at the extreme southeast end of the grid, being open to the south. Underlying lithologies and mineralization related to these anomalous areas have not as yet been defined.

ITEMIZED COST STATEMENT (MAY 13 TO MAY 16, 1981)

a) Labour		
	Line-cutting - 2 men x 1 day @ \$60.00/man/day	\$ 120.00
	Geochemical Survey - 2 men x 3 days @ \$60.00/man/day	360.00
	Field Supervision - 1 geologist x 2 days @ \$100.00/day	200.00
b) Food & Camp Costs		
	3 men x 4 days @ \$20/man/day	240.00
c) Field Supplies (thread, bags, tags & flags)		30.00
d) Truck & Trailer Rental		
	6 days x \$45/day	270.00
e) Fuel		
	4 days @ \$20/day	80.00
f) Sample Preparation & Analysis		
	97 samples @ \$13.10/sample	1,270.70
	Sample Shipment	20.00
g) Report Preparation (drafting & typing inclusive)		500.00
		<hr/>
	Sub Total	3,090.70
h) Amount withdrawn from P.A.C.		509.30
		<hr/>
	TOTAL	\$3,600.00
		<hr/> <hr/>

STATEMENT OF QUALIFICATIONS

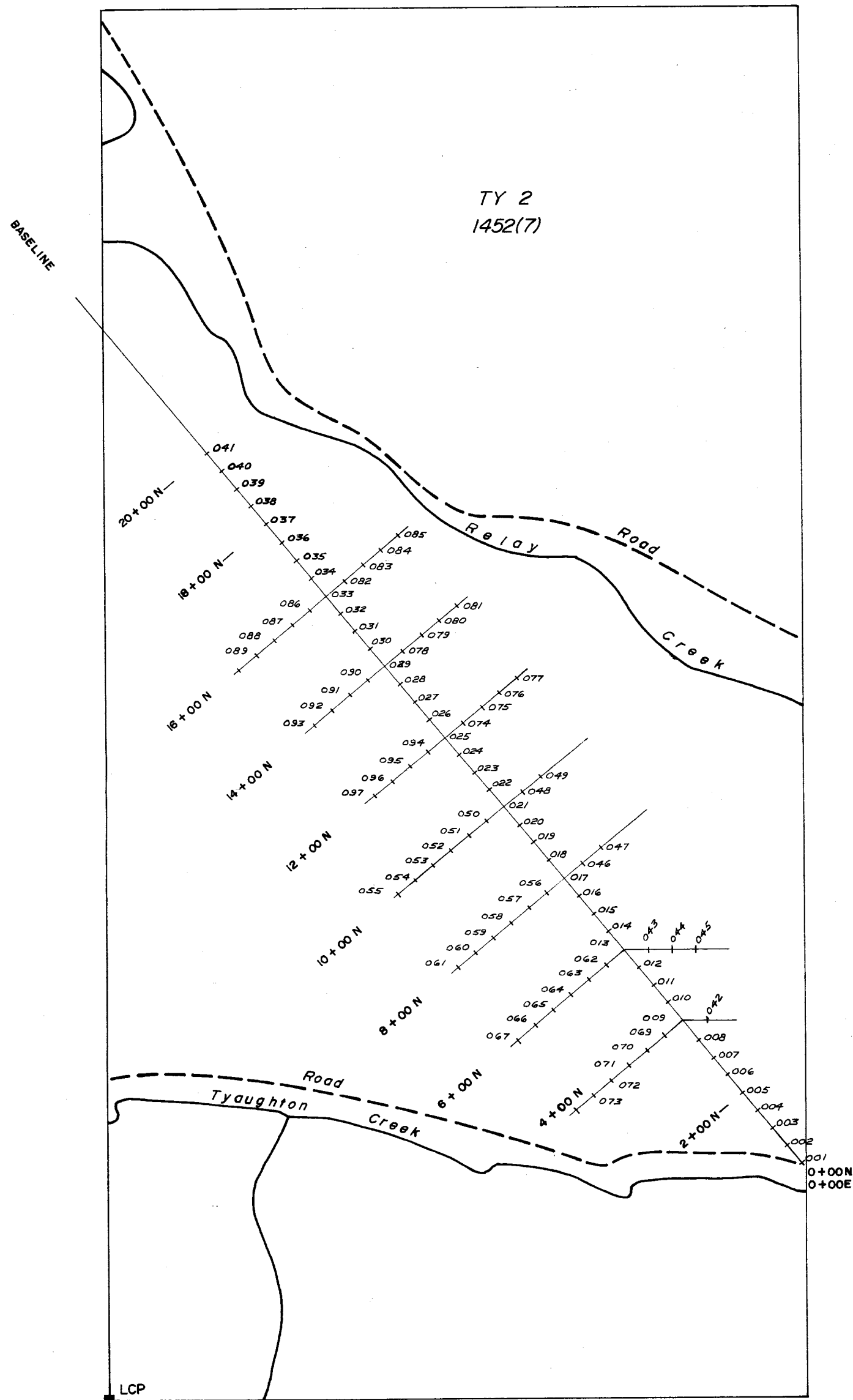
I, DEL W. FERGUSON, of #501 - 1330 Bute Street, Vancouver, B. C.
do hereby certify that:

- a) I am a geologist with office address at #1103 - 595 Burrard Street, Vancouver, B. C. V7X 1C4.
- b) I am a graduate of the University of Western Ontario with an Honours Bachelor of Science degree in Geology.
- c) I have had two years of geological experience in various phases of exploration in B. C.
- d) I have supervised the soil sample collection over the TY 2 mineral claim.

Respectfully submitted



Del W. Ferguson
Project Geologist

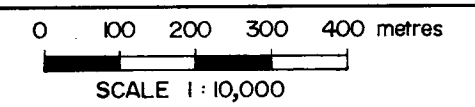


LEGEND

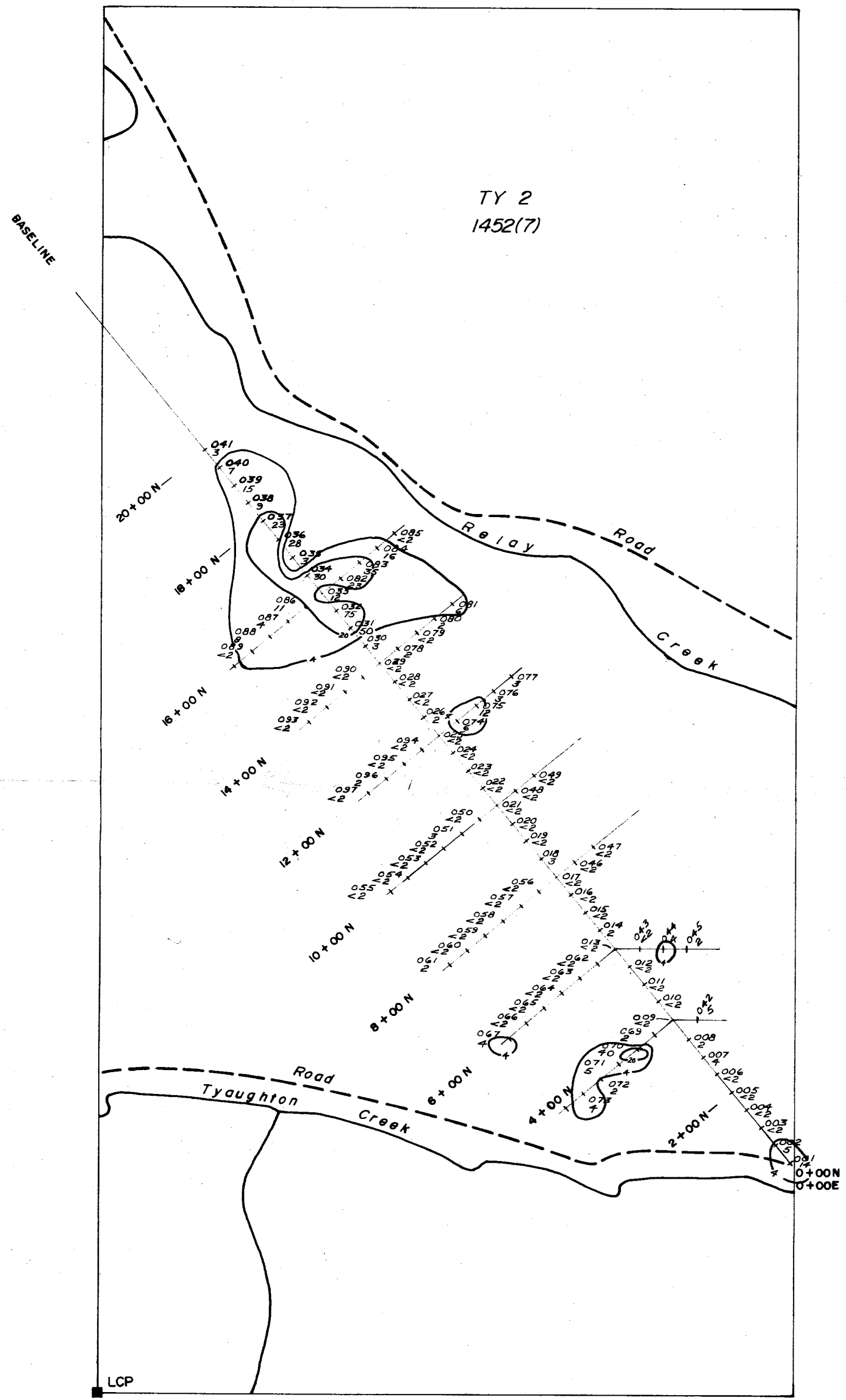
- Sample Location
- Sample Number
- Claim Boundary
- Claim Name Record Number (Month)

MINERAL RESOURCES BRANCH
ASSESSMENT REPORT
9390
NO.

WESTMIN RESOURCES LIMITED
TYAUGHTON CREEK PROJECT
SAMPLE LOCATION MAP



DATE: JUNE, 1981 Revised: Drawn by: LGC for DWF **FIGURE-3**



LEGEND

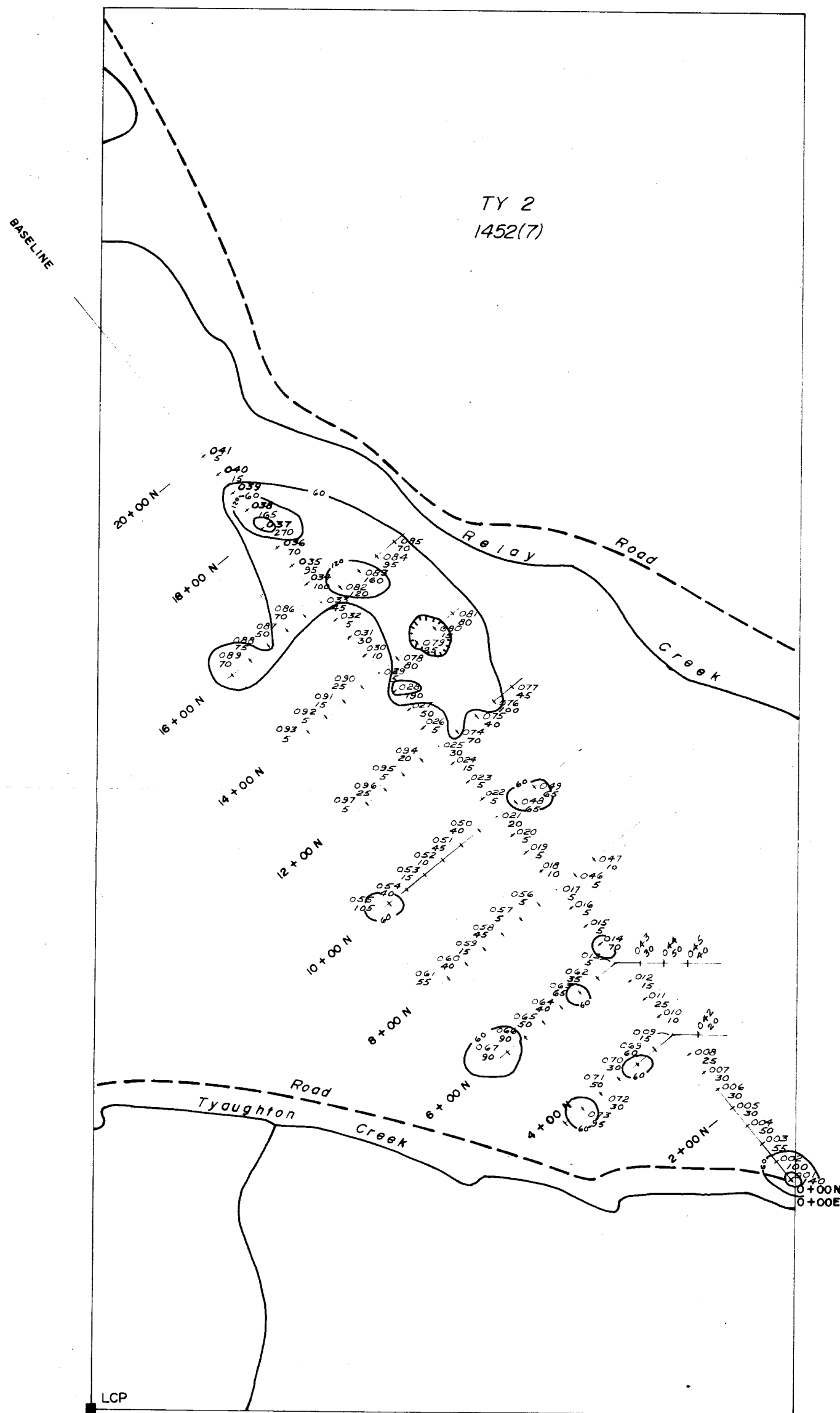
- ++ Sample Location
- $\frac{0.5}{4}$ Sample Number (075) Value (4)
- Claim Boundary
- TY 2 1452(7) Claim Name Record Number (Month)

Assay Information - W in ppm.

Contour Intervals - 4 ppm.
20 ppm.

MINERAL RESOURCES BRANCH
ASSESSMENT REPORT
9390
NO.

WESTMIN RESOURCES LIMITED			
TYAUGHTON CREEK PROJECT			
TUNGSTEN GEOCHEMISTRY			
0 100 200 300 400 metres			
SCALE 1:10,000			
DATE: JUNE, 1981	Revised:	Drawn by: LGC for DWF	FIGURE-4



LEGEND

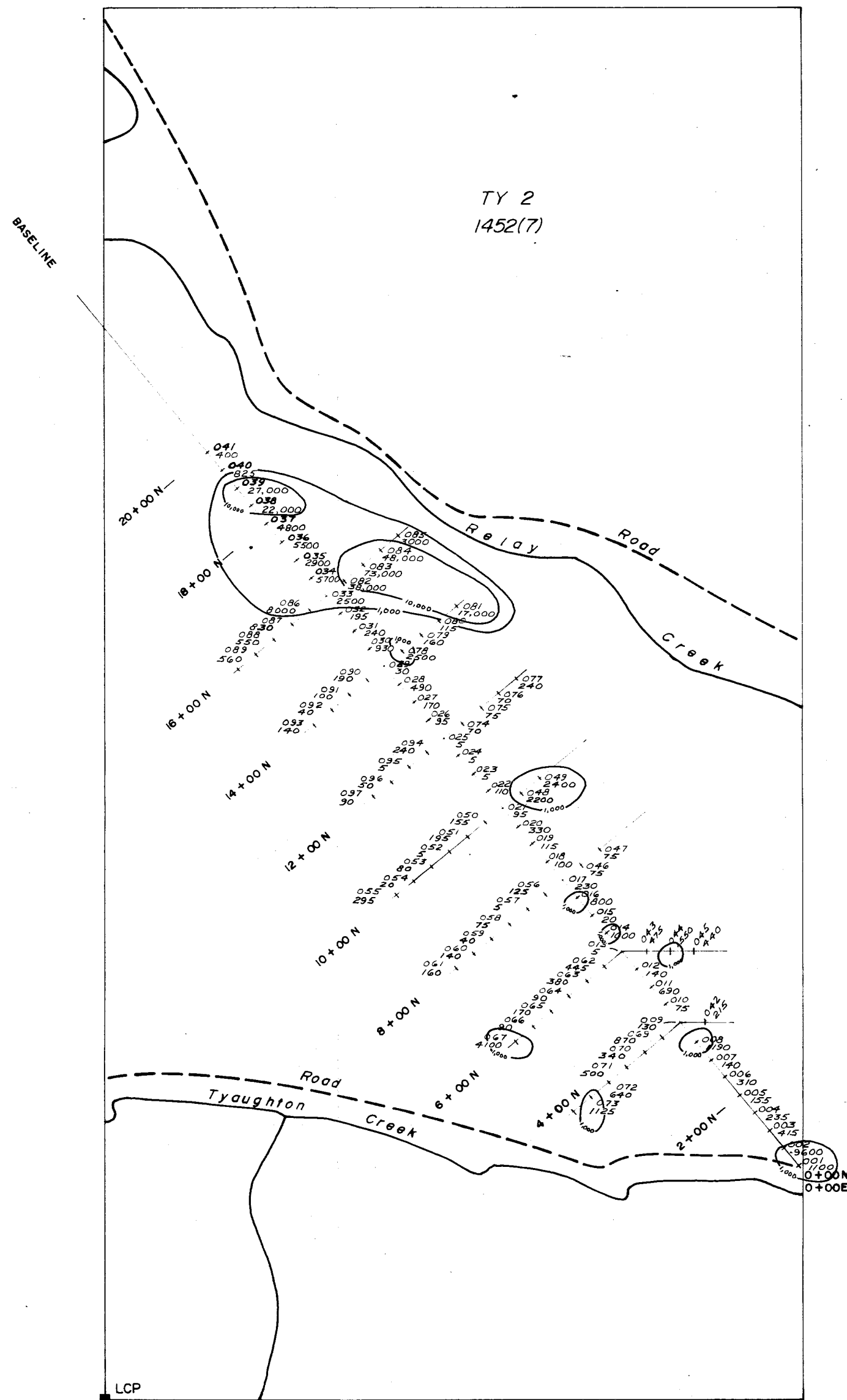
- Sample Location
- Sample Number (075) Value(40)
- Claim Boundary
- Claim Name
Record Number (Month)

Assay Information - Sb in ppm.

Contour Intervals - 60 ppm.
120 ppm.
240 ppm.

MINERAL RESOURCES BRANCH
ASSESSMENT REPORT
9390
110.

WESTMIN RESOURCES LIMITED			
TYAUGHTON CREEK PROJECT			
ANTIMONY GEOCHEMISTRY			
<p>SCALE 1 : 10,000</p>			
DATE: JUNE, 1981	Revised:	Drawn by: LGC for DWF	FIGURE-5



LEGEND

- Sample Location
- Sample Number (075) Value (75)
- Claim Boundary
- TY 2**
1452(7) Claim Name
Record Number (Month)
- Assay Information - Hg in ppb.
- Contour Intervals - 1,000 ppb
10,000 ppb.

MINERAL RESOURCES BRANCH
ASSESSMENT REPORT
9390

WESTMIN RESOURCES LIMITED			
TYAUGHTON CREEK PROJECT			
MERCURY GEOCHEMISTRY			
0 100 200 300 400 metres			
SCALE 1 : 10,000			
DATE: JUNE, 1981	Revised:	Drawn by: LGC for DWF	FIGURE-6