

81-#634  
-9443

ASSESSMENT REPORT

TYPE: DIAMOND DRILLING

NTS LOCATION: 92I/9 W

LATITUDE: 50° 40'

LONGITUDE: 120°27'

MINING DIVISION: KAMLOOPS

CLAIMS: NORMA, MINT FR. C.G.s  
LOTS 1302, 1342.

OWNER: COMET INDUSTRIES LTD.

CLAIMS: RAINBOW NE, -NW, -SE, -SW

OWNER: PACIFIC SEADRIFT RESOURCES LTD.

OPERATOR: CRAIGMONT MINES LIMITED

AUTHOR: N.B. VOLLO, P.ENG.

DATE: JULY 24th, 1981

FEDERAL DEPARTMENT OF ENERGY  
ASSESSMENT REPORT  
**9443**  
NO.

TABLE OF CONTENTS

LOCATION AND ACCESS	1
CLAIMS	1
HISTORY AND PREVIOUS WORK	1
GEOLOGY	1
DRILL PROGRAM	1
CORE STORAGE	2
QUALIFICATIONS	2
STATEMENT OF EXPENDITURES	2
LOCATION MAP	3
DRILL LOGS - CS-81-36 to 56 S-81-19 to 30	
DRILL PLAN - 1:5000 (IN POCKET)	

### LOCATION AND ACCESS

The property is located within the western boundary of the City of Kamloops, between Kamloops Lake and Sugarloaf Mountain. It is accessible from the Trans Canada and Logan Lake highways, which both cross it.

### CLAIMS

The property consists of two contiguous portions:

I. 25 crown grants, lots 878-80, 1036, 1050, 1340-42, 1747, 4666-67, 5622-29, 1311, M.L. 21, and 119 recorded claims including the Debş, ORs, DMs, Lornas, ROs, EBs, MROs, Jans and Rex's, Held by Comet Industries, Initial Developers and Davenport Industries.

II. The Rainbow NE, NW, SE, SW, Roda, Redhead, Roda 2, and Kam, totalling 45 units, and M.L. 21, held by Pacific Seadrift Resources.

### HISTORY AND PREVIOUS WORK

Copper was discovered on the properties in the late 1800's and the Iron Mask mine produced 180,000 tons grading 1.5% copper between 1904 and 1928. Since 1972, approximately 70,000 m of diamond, percussion and rotary drilling has been completed by various companies resulting in the discovery of several copper deposits, the most prominent of which are the Big Onion and Rainbow #2 zone.

### GEOLOGY

The property lies astride the Iron Mask batholith, with the Big Onion zone near its north contact; the Rainbow Zone near its south contact. The batholith is an alkalic intrusive complex coeval with the enclosing Nicola volcanic rocks, unconformably overlain by Tertiary sediments and volcanics and extensively disturbed by Tertiary faulting.

Mineralization occurs within northwesterly trending shear or breccia zones, near, or in places within, dike like bodies of picrite. It is essentially chalcopyrite with significant associated gold and silver and, at the Rainbow #2 zone, molybdenum.

### DRILL PROGRAM

The properties were optioned by Craigmont Mines Limited in 1981 and 5729 m of BQ diamond drilling completed in 34 holes to evaluate the Big Onion and Rainbow #2 zones as potential mines. Reserves defined were not judged adequate

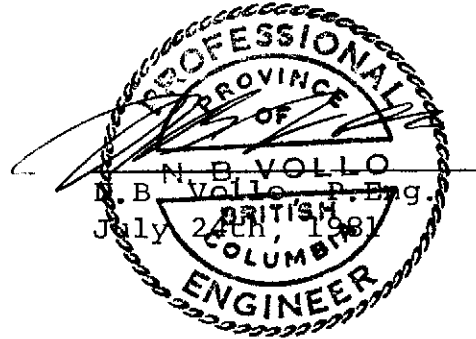
to support an independant mining operation and the option was dropped.

CORE STORAGE

Core is stored in a a large building on site.

QUALIFICATIONS

The core was logged by J. Murphy, P.Eng., and by the author.



STATEMENT OF EXPENDITURES

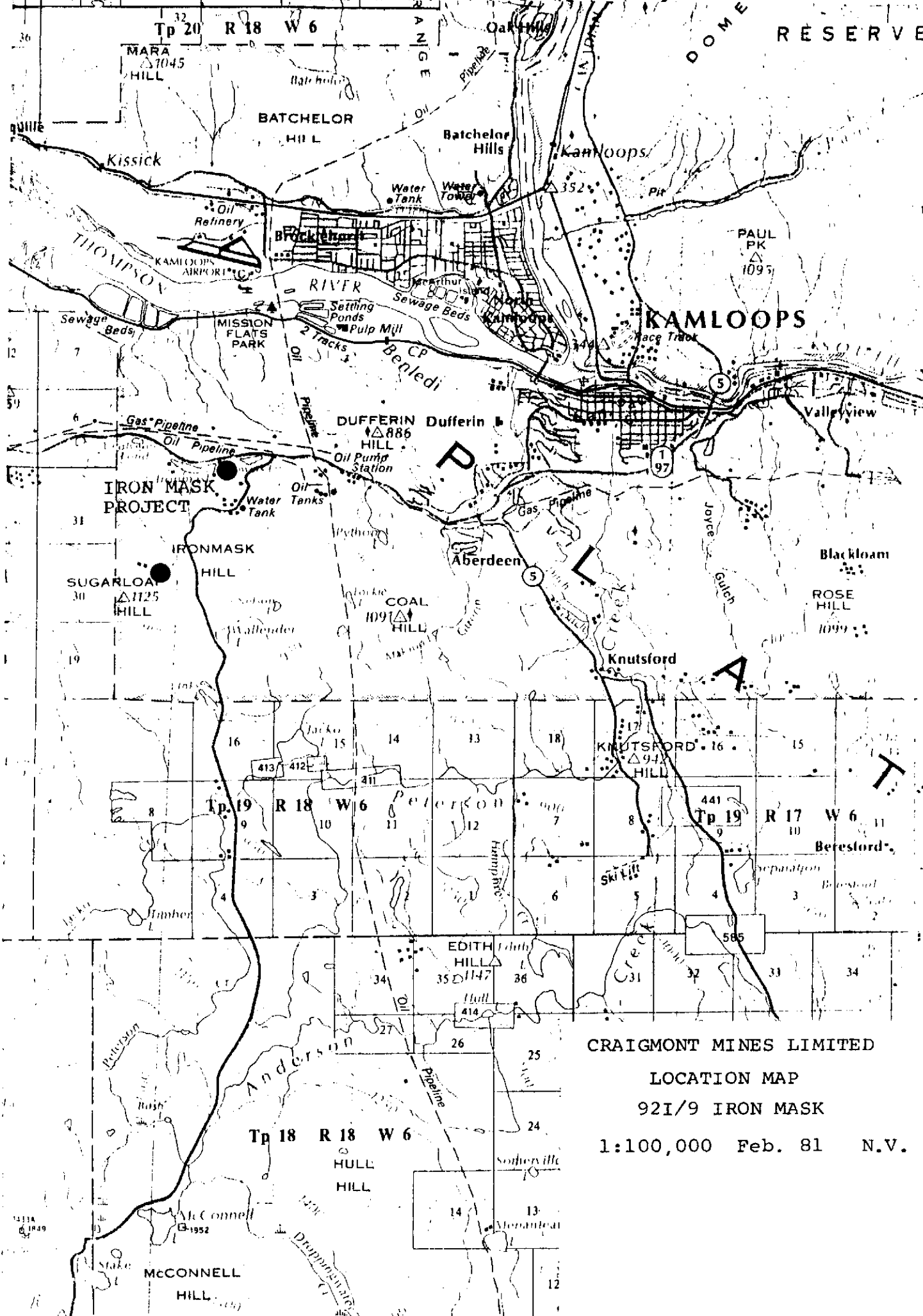
5419.7 m BQ diamond drilling at \$52.50/m	--\$284,535
159.3 m " " " " \$54.90/m	-- 8,745
140 hrs tractor time at \$30/hr	----- 4,200
Reaming, mud, additives, lost casing	----- <u>13,396</u>

Total \$310,876

Contractor - H. Allen Diamond Drilling Ltd.  
Box 1397,  
MERRITT, B.C. VOK 2B0

On Norma, Mint Fr. C.G.s, 3069 m -----\$171,012

On Rainbow NE, -NW, -SE, -SW, 2510m----- 139,864



CRAIGMONT MINES LIMITED  
 LOCATION MAP  
 92I/9 IRON MASK  
 1:100,000 Feb. 81 N.V.

1:100,000  
 1980



# DIAMOND DRILL CORE LOG - SAMPLE RECORD

 PROPERTY 921/3 CS

 HOLE No. C-EI-36

 SHEET No. 2 of 6

DEPTH	DESCRIPTION	MINERALIZATION	SAMPLE	FROM	TO	m	Cu %	Mo %	Au ppm	Ag ppm
25.4	MICRODIORITE: dark grey green. f.g. to aphanitic, massive, fairly uniform, w/ky brecciated in part esp over first 5m, minor introduced grey to pinkish carb. slts w/ intermediate angles, some with associated Cpy. fairly hard, siliceous & competent w/lt chloritic ferromags, ltp clet arbitrary, btm clet fairly distinct w/lt, shd & mixed w/ Cpy & Py	<1% Cpy w Py	2729	25	30	5	.13	.061	.14	7
		" "	2730	30	35	5	.17	Tr	.10	6
		<1% Cpy & Py	2731	35	40	5	.24	Tr	.14	7
37.9	HYBRID DIORITE: med. to dark grey green, med ground, massive, fairly uniform, scat'd epidote as bands & fracture coatings, generally wk. scat'd Cpy & Py, 38.4-40 cm slightly shd, strongly chloritic band @ 35 w/ 15-20% pink K-spar & 5% Py w. Cpy	<1% Cpy & Py	2732	40	45	5	.47	.061	.24	10
44.2-1.0m	LOSSY CORE, tube not locked	" " "	2733	45	50	5	.26	.061	.17	6
50.9-30cm	shr. filled w. 80% c.g. glz. carb. w. coarse Cpy to 1.5 cm, clets @ 20,	72% Cpy & Py	2734	50	55	5	.33	Tr	.17	7





# DIAMOND DRILL CORE LOG -- SAMPLE RECORD

 PROPERTY 921/9 CS

 HOLE No. C-81-36

 SHEET No. 4 of 6

DEPTH	DESCRIPTION	MINERALIZATION	SAMPLE	FROM	TO	m	Cu %	Mo %	Au ppm	Ag ppm
79.4	MONZONITE: med. grey w rusty pink cast due K spar allin, med. grained, massive, fairly uniform, abundant fine carb. growing strong reaction to HCl, no sulphides noted,	<1% Py + Cpy	2739	75	80	5	.10	Tr	.03	6
	83.3 - 70cm Lost Core, tube not tested									
	84.3 - 50 cm Fault Zone w. fractured Monz & 6% gouge	barren	2740	80	85	5	.02	.001	Tr	6
85.5	PILRITE: black to dark grey, f.g., mainly massive, appreciable shearing & brecciation,	1-2% Cpy + Py	2741	85	90	5	.81	.042	.27	13
	85.5 - 83cm pinkish grey gypsum un. v. sharp w 60 & 95. strong Py min. over 2cm adjacent to both clets,									
	85.7 - 104.0 - fractured & w/ky brecciated section	1-2% Py w Cpy	2742	90	95	5	.27	.003	.14	10
	w. 5-10% grey white carb. as strs & frags, minor gypsum, fair Cpy-Py min, 22% Lost Core due to tube not locking, sect 86.9-90.9 probably all'd Monz.	2% Py w Cpy	2743	95	100	5	.32	.003	.10	14





# DIAMOND DRILL CORE LOG - SAMPLE RECORD

DEPTH	DIP	BEARING AST.
COLLAR	48°30'	S-45°-W
90m	50°	

PROPERTY 921/9 CS COMET CLAIM ..... HOLE NO. C-81-37  
 LATITUDE 9968.72-N STARTED 81-02-22 CORE SIZE BQ  
 DEPARTURE 10211.89-E FINISHED 81-02-24 SECTION 828  
 ELEVATION 726.22 TOTAL LENGTH 99.0m LOGGED BY J.D. Murphy

DEPTH	DESCRIPTION	MINERALIZATION	SAMPLE	FROM	TO	m	Cu %	Mo %	Au ppm	Ag ppm
0.0	CASING: stick up 0.5m, casing pulled,									
9.5	PILRITE: dark grey to black, f.g. massive, barren, abund fine carb. all'n,	barren	2746	9.5	15	5.5	.02	.001		
12.4	HYBRID DIORITE: med. grey green to dark grey, pink cast in part w wk Kspar, 3-9% grey white carb slvs to 2 cm. w low to intermediate angles, lesser clear to buff gypsum, mainly barren w occ. patch Fair Cpy, abund carb all'n & lesser epidote	barren	2749	15	20	5	.02	.001		
16.2-30cm	Fault Zone, 50% gouge, apparent attitude 20° to cl.									
20.4-15cm	compact Fault gouge @ 65									
20.9-15cm	10-15% cise Cpy w. grey impure carb, top clet broken, btm. clet. @ 25,									
29.3-31.1	Fault Zone, v. strong, first 30cm shid chloritic & intermed to high angles w 80% iron carb & anhyd.	5% Cpy	2750	20	25	5	.30	.001		

# DIAMOND DRILL CORE LOG -- SAMPLE RECORD

 PROPERTY 921/9 CS

 HOLE No. C-81-37

 SHEET No. 2 of 4

DEPTH	DESCRIPTION	MINERALIZATION	SAMPLE	FROM	TO	m	Cu %	Mo %	Au ppm	Ag ppm
12.4	HYBRID DIORITE (cont'd)									
	23.3 - 31.1 - Fault Zone (cont'd)									
	24.0 - 31.1 - 80% fault gouge & rock frags w. three beds gypsum to 10 cm,	barren	2751	25	30	5	.05	Tr		
31.1	MUNZONITE: light to dark greenish grey, m.g. to f.g., usual pink K sp. alt. absent, massive, fairly uniform, barren.	barren	2752	30	35	5	.14	.004		
	32.7 - bluish slip shales 20 to 1-2 cm pinkish carb-gypsum sh. both walls,									
	36.9 - 40 cm Fault Zone, clayey gouge & frags, faultwall sharp at 45,	<1% Gyp	2753	35	40	5	.09	.002		
37.3	HYBRID DIORITE: med. grey green m.g., massive to strongly sheared & fragmented, overall non uniform appearance,	COMPOSITE		20	40	20			.07	.3
	39.9 - 46.9 - light grey fragmental section becoming more sheared & broken with depth, abundant med. grey felds patches & sh. some gte, scattered Gyp	<1% Gyp & Py	2754	40	45	5	.27	.010		













# DIAMOND DRILL CORE LOG - SAMPLE RECORD

DEPTH	DIP	BEARING AST.
COLLAR	49°50'	S-45°W
75m	41 1/2°	

PROPERTY 92119 CS COMET CLAIM ..... HOLE NO. C-81-39  
 LATITUDE 10030.51-N STARTED 81-02-25 CORE SIZE 80  
 DEPARTURE 10090.88-E FINISHED 81-02-26 SECTION 957  
 ELEVATION 724.12 TOTAL LENGTH 75.0m  
 LOGGED BY J. D. Murphy

DEPTH	DESCRIPTION	MINERALIZATION	SAMPLE	FROM	TO	m	Cu %	Mo %	Au ppm	Ag ppm
0.0	CASING stick up 0.6 m. casing pulled									
6.8	HYBRID DIORITE: med. grey green, mainly m.g., scat'd patches rusty pink K spar all <sup>n</sup> , minor epidote patches & slip coatings, various color changes w. Pt. some weakly fragmented beds give overall non uniform aspect, some wk to fair Cpy as blocks & irregular patches, lesser Py, wk to moderately reactive to HCl	<1% Py	2770	6.8	10	3.2	.02	.001		
		barren	2771	10	15	5	.03	.001		
		<1% Cpy	2772	15	20	5	.17	.003		
		barren	2773	20	25	5	.03	.002		
		1% Cpy	2774	25	30	5	.39	.001		
	18.5 - 2 cm white gypsum w. Gc	2-3% Cpy	2775	30	35	5	1.96	.001		
	38.3 - 70 m dark grey f.g. dioritic trap dike, v. uniform w scat'd flecks Cpy to 1%, top det	1-2% Cpy	2776	35	40	5	.93	.001		
	slip w. Gc, blm det w. Gc,	<1% Cpy	2777	40	45	5	.49	.001		
		<1% Cpy	2778	45	50	5	.36	.001		
		<1% Cpy	2779	50	55	5	.20	.002		
		COMPOSITE		15	55	40			.31	12
		<1% Cpy & Py	2780	55	60	5	.04	.003		



# DIAMOND DRILL CORE LOG — SAMPLE RECORD

DEPTH	DIP	BEARING AST.
COLLAR	43°40'	S-45°-W
100m	53°45'	

PROPERTY 921/9 CS Comet CLAIM ..... HOLE NO. C-81-40  
 LATITUDE 10070.49 STARTED 1981-03-08 CORE SIZE BQ  
 DEPARTURE 10131.15 FINISHED 1981-03-04 SECTION 957  
 ELEVATION 719.51 TOTAL LENGTH 123.5 LOGGED BY J.D. Murphy

DEPTH	DESCRIPTION	MINERALIZATION	SAMPLE	FROM	TO	m	Cu %	Mo %	Au ppm	Ag ppm
0.0	CASING: stick up 0.6 m, casing pulled									
6.0	MICROSYENITE: med to dark grey, v. f.g., massive, uniform, well mixed w P.g. Cpy & Py,	1% Cpy & Py	2784	6	10	4	.96	.001		
		2% Cpy	2785	10	15	5	1.01	Tr		
	8.2-10.1. Fault Zone, 90% brecciated w. clayey interstices									
	Pinolite 30 cm 70% gouge, 8.4-10 cm qtz-carb-fluorite un w dissem Cpy & Py									
11.2	SYENITE: med. to light grey, m.g., massive, uniform. appears to grade into enclosing f.g. rocks, fair to good Cpy as Cpy to m.g. blebs & disseminations,									
13.3	MICROSYENITE: as described above w. some m.g. blebs & more prominent Cpy blebs,	1-2% Cpy	2786	15	20	5	.65	.001		

















# DIAMOND DRILL CORE LOG -- SAMPLE RECORD

 PROPERTY 921/3 CS

 HOLE No. C-81-41

 SHEET No. 4 of 6

DEPTH	DESCRIPTION	MINERALIZATION	SAMPLE	FROM	TO	m	Cu %	Mo %	Au ppm	Ag ppm
116.3	PICRITE (cont'd) strong Cpy min & chd.									
116.3-80 cm	w 70% Cpy & lesser Py, balance unrecrystallized picrite, lower chd. sharp w 50,	36% Cpy & Py	2856	116	117.5	1.5	7.90	.003		
117.5-119.6	hybrid musite, dark grey, contains 20% hard light grey feldspar min. of cr irreg. fig. to ang. patches & narrow str. to 5 mm, int. scatted Cpy & Py.	<5% Cpy & Py	2857	117.5	120	2.5	.06	.003	33	92
120.3-80 cm	Fault Zone, strongly shd. brecciated w. abundant gangue, int. py. min, est'd attitude 30-40,	<1% Cpy	2858	120	125	5	.48	.006		
121.1-50 cm	grey green chlorite slks mg. barren									
124.6-2 cm	white carb w 60 w. 30% Cpy.									
125.0-3 cm	hard irreg. Cpy									
125.7-50 cm	shd. chlorite, brecciated									
126.6	HYBRID DIORITE: light to dark grey mg., fairly uniform	1% Cpy	2859	125	130	5	.73	.004		
	mottled w. epidote patches, fair scatted Cpy & Py, minor gypsum & calc. str.	1% Cpy	2860	130	135	5	.85	.008		











# DIAMOND DRILL CORE LOG — SAMPLE RECORD

 PROPERTY 921/9 CS

 HOLE No. C-81-72

 SHEET No. 3 of 6

DEPTH	DESCRIPTION	MINERALIZATION	SAMPLE	FROM	TO	m	Cu %	Mo %	Au ppm	Ag ppm
49.8	PICKITE (cont'd)									
	69.0-70.2 - Lost CORE, bad ground, fault zone reported									
	79.2-70 cm brecciation & gouge, p 60									
80.7	MONZONITIC DIKE: med. grey, f.g. to m.g., massive, barren, csts w high angles.	barren	2870	80	84	4	.08	.001		
81.9	PICKITE: dark grey, m.g., mottled appearance, barren,									
83.9	HYBRID DIORITE: mainly med. grey green with darker sections & some light grey 'bleached' argillie bands, m.g., non uniform aspect, prominent epidote altit esp. on fractures, wk to fair Cpg & Py min. in part, 84.0-86.5 - light grey bleached appearance attributed to argillie altit, no carbonates, non magnetic in contrast to normal hybrid diorite, sulphide min more prominent	<1% Cpg & Py	2871	84	90	6	.25	.001		
		4.5% Cpg & Py	2872	90	95	5	.02	.001		

# DIAMOND DRILL CORE LOG - SAMPLE RECORD

 PROPERTY 921/9 CS

 HOLE No. C-81-42

 SHEET No. 4 of 6

DEPTH	DESCRIPTION	MINERALIZATION	SAMPLE	FROM	TO	m	Cu %	Mo %	Au ppm	Ag ppm
83.9	HYBRID DIORITE: (cont'd)									
	94.4 - 20cm fault gouge @ 70									
	94.4 - 97.2 - lighter grey slightly 'bleached' zone with good f.g. sulphide min. to 10%, scat'd epidote matting in part, wk interstitial carb, non magnetic,	3-4% Cpy & Py	2873	95	100	5	.03	.001		
	98.8 - 104.9 - med. grey, n.g. highly biotitic phase, fresh appearance, possible dike, some wk flow banding @ 50, wk. dissem. Cpy. including bands to 5 cm. 8d0 con. crse blaks @ Pyrite chet.;									
		1% Cpy	2877	100	105	5	.65	.001		
104.9	PIRITITE: dark grey to black, f.g. massive, fairly uniform, barren except for f.g. dissem. Py & few blaks Cpy in. First nitre, shid & talcose in part	<.5% Cpy	2878	105	110	5	.13	.001		
	104.9 - 108.3 - normal soft talcose part.									
	108.3 - 132.2 grey mottled appearance due to microcrystalline aggregates of black & grey min. in black cryptocrystalline groundmass.	barren	2879	110	115	5	.78	.002		



# DIAMOND DRILL CORE LOG - SAMPLE RECORD

 PROPERTY 921/9 CS

 HOLE No. C-81-42

 SHEET No. 6 of 6

DEPTH	DESCRIPTION	MINERALIZATION	SAMPLE	FROM	TO	m	Cu %	Mo %	Au ppm	Ag ppm
162.0	PICRITE: dark grey, f-g, mottled in part, fairly hard w. some soft shud chlorite zones, barren	barren	2894	162	165	3	.41	.002		
		barren	2922	165	170	5	.56	.001		
167.5-20cm	dioritic dike, horn et w 60									
168.3-10cm	clayey bx. w 70	"	2130	170	175	5	.75	.001		
179.6-30cm	shud bx zone w 50	"	2931	175	180	5	.57	.001		
	10cm strong Py w Cpy a h. wall	"	2932	180	185	5	.22	.001		
182.2-35cm	clayey bx, horn et w 55	"	2933	185	190	5	.06	.001		
		COMPOSITE		150	180	30	.57	.001	.31	9
188.2-20cm	bx. clayey fault w 60-65									
189.6-20cm	bx. clayey fault w 365, taluse slip w 50,	2-5% Cpy & Py	2897	190	195	5	.22	Tr		
191.5-209.0	core badly broken & blocky, shud patches	barren	2898	195	200	5	.27	.001		
	rise Cpy w Py.	4% Cpy & Py	2899	200	205	5	.55	Tr.		
202.0	good Cpy over 10cm.									
		4% Cpy	2900	205	210	5	.45	Tr.		
		barren	2901	210	215	5	.17	.001		
215.0	MONZONITIC DIKE: light grey granite									
	dark grey biotitic	1% Cpy	2902	215	217	2	.78	.002		
	where blended with picrite, fair fissin. Cpy.									
217.0	PICRITE: as previously described.	barren	2903	217	220	3	.17	.001		
	barren									
225.0	END OF HOLE	barren	4525	220	225	5	.21			
		COMPOSITE		180	225	45	.35	.002	.17	10

# DIAMOND DRILL CORE LOG - SAMPLE RECORD

DEPTH	DIP	BEARING AST.
COLLAR	50°40'	225°
100m	50°	
200m	41 1/2°	
275m	41°	

PROPERTY 921/9 CS (COMET) CLAIM ..... HOLE NO. C-01-43  
 LATITUDE 10127.12-N STARTED 1981-03-07 CORE SIZE BQ  
 DEPARTURE 10310.15-E FINISHED 1981-03-13 SECTION 871  
 ELEVATION 732.81 TOTAL LENGTH 280.0m  
 LOGGED BY J.D. Murphy

DEPTH	DESCRIPTION	MINERALIZATION	SAMPLE	FROM	TO	m	Cu %	Mo %	Au ppm	Ag ppm
0.0	CASING: stick up 0.5m, casing pulled.									
1.6	HYBRID DIORITE: med. grey green. m.g., mainly massive, minor rust, one coating of malachite on slip in first 3 m, no sulphides noted.									
4.7	DIORITIC DIKE: med. grey green to light greenish grey, aphanitic, massive, barren, top ctst @ 75, v blocky w 2cm pink K spor, btm ctst broken.									
5.9	HYBRID DIORITE: as described above, moderately fractured & broken but core recovery good, 5-10% K spor altn as rusty pink str & patches, 9.2-10 cm. br'd fault @ 45, 19.1-20m vug lined with prismatic xl's white carb, detrital spar?, 10cm barren had. K spor associated		2874	35	40	5	.01	.002		
	38.5-40.0 - pink K spor altn to 45-50% 41.0-44.5 - darker grey section w shand bitite, moderately sh'd @ 50, m.m. Cpy	<.5% Cpy	2875	40	45	5	.04	.002		











# DIAMOND DRILL CORE LOG -- SAMPLE RECORD

 PROPERTY 921/9 LS

 HOLE No. C-81-43

 SHEET No. 6 of 6

DEPTH	DESCRIPTION	MINERALIZATION	SAMPLE	FROM	TO	m	Cu %	Mo %	Au ppm	Ag ppm
2407	PILPITE (cont'd)									
	260 - 261.7 - Lost CORE, tube unlabeled,									
		barren	2914	265	270	5	.24	.001		
	270.4 - 20cm mostly gray calcite veining with goethite & Py	3-4% (py & Py)	2915	270	272	2	1.60	.001		
	276.1 - 278.0 - Lost CORE, tube unlabeled	barren	2916	272	275	3	.25	Tr		
		barren	2917	275	280	5	.19	.001		
2800	END OF HOLE									
	Hole abandoned short of projected depth of 300m. On final run rods dripped 1-2m when chuck released. Hole could not be advanced beyond this point.	COMPOSITE		240	280	40	.40	.002	.31	10







# DIAMOND DRILL CORE LOG - SAMPLE RECORD

 PROPERTY 921/9 CS

 HOLE No. C-81-44

 SHEET No. 4 of 6

DEPTH	DESCRIPTION	MINERALIZATION	SAMPLE	FROM	TO	m	Cu %	Mo %	Au ppm	Ag ppm
84.3	MONZONITE DIKE: med. to light gray, m.g., massive, uniform, barren, clefs well defined W 75-80									
87.6	PICRITE: black, f.g. mineral appearance, brecciated & faulted throughout w much gangue ls, main string c. 95-98, oil carb. str. barren	barren	4219	80	85	5	.08			
		"	4220	85	90	5	.04			
92.8	HYBRID DIORITE: dark to med green, greenish cast, m.g. to f.g., brecciated in part, some darker highly bubble bands probably partly replaced picrite, wk. scald by gangue, with some local concentrations good Cpy.	barren	4221	90	95	5	.24			
		barren	2750	95	100	5	.14	.001		
		<.5% Py - Cpy	4501	100	105	5	.19	.002		
	105 - 108 cm. w good Cpy & Py c. 1-2% wry. conc. blks & str. @ 50,	1-2% Cpy & Py	4502	105	110	5	1.00	.002		
	followed by 8m fair class. Cpy w Py.	barren	4503	110	115	5	.04	.001		
	116.0 - 122.8 class. Cpy, varying from fair to good, less associated Py.	<.5% Cpy	4504	115	120	5	.35	.001		







# DIAMOND DRILL CORE LOG - SAMPLE RECORD

DEPTH	DIP	BEARING AST.
COLLAR	51°40'	S-45°-N
100m	49°	
200m	52°	
250m	51 1/2°	

PROPERTY 32119 CS (COMET) CLAIM ..... HOLE NO. C-81-45  
 LATITUDE 10035.49-N STARTED 1981-03-16 CORE SIZE 80  
 DEPARTURE 10339.40-E FINISHED 1981-03-22 SECTION 784  
 ELEVATION 724.06 TOTAL LENGTH 250.0m LOGGED BY J.D. Murphy

DEPTH	DESCRIPTION	MINERALIZATION	SAMPLE	FROM	TO	m	Cu %	Mo %	Au ppm	Ag ppm
0.0	CASING: start up 0.7m casing pulled									
10.3	HYBRID DIORITE: med to dark grey w. greenish or pinkish cast, mg to fg, minor white & purple Hercynite remaining, minor scud Pg w. rare black lpy, numerous w. fractures mostly w. intermediate angles, abund fine interstitial calc strongly reactive to HCl.	barren	2241	30	35	5	.05	.003		
		barren	2242	35	40	5	.02	.002		
		<.5% Pg	2243	40	45	5	.02	.001		
		barren	2244	45	50	5	.02	Tr		
13.8	20cm Trap dike, black, fg top chd sharp w. lo.	1% lpy	2245	50	52	2	.62	.003		
53.9	PILRITE: black, fg to mg mottled, w. minor carb str.	barren	2246	52	55	3	.13	.005		
		"	4926	55	60	5	.04			
60.2	50cm anorthositic dike, mg, light grey-green, pink mottling, str. chd slid a dg, top chd w. 70, barren.	"	4927	60	65	5	.02			
63.9	80cm dioritic dike, mg, strongly biotitic, chd c 10 & 52	"	4928	65	70	5	.11			



# DIAMOND DRILL CORE LOG - SAMPLE RECORD

 PROPERTY 921/9 CS

 HOLE No. C-81-45

 SHEET No. 3 of 6

DEPTH	DESCRIPTION	MINERALIZATION	SAMPLE	FROM	TO	m	Cu %	Mo %	Au ppm	Ag ppm
102.0	Pirrite: black, l-g. mineral, well shnd. top chd. shd w 15 w 2 cm gauge									
105.5	MONZONITIC DIKE: similar to 99.5 to 102, some fair polyh. Cpy, top chd. broken, btwn w 15	~1% Cpy	4513	105	110	5	.99	.002		
110.6	Pirrite: as previously described, much shearing & birefracton, minor gauge, blocky	<.5% Cpy COMPOSITE	4514	110	115	5	.26	.003		
		Barren		95	115	20	.44	.003	.14	8
		"	4515	115	120	5	.05	.003		
		"	4516	120	125	5	.05	.001		
		Barren	4517	125	130	5	.10	.001		
129.4	MONZONITES: light gray with pinkish or greenish cast, m.g. massive, unbroken, few schid white or epidote, moderate K spar with in part, mainly barren w occ. flck Cpy, top chd shd w 15 w 2 cm gauge, btwn chd shd & broken, attitude not determined.	<.5% Cpy	4518	130	135	5	.05	.001		
		Barren	4519	135	140	5	.01	.001		
		Barren	4520	140	145	5	.02	.001		
		Barren	4521	145	150	5	.10	.004		
148.2	Pirrite: as described, soft, blocky & broken, barren	Barren	4522	150	155	5	.15	.001		

# DIAMOND DRILL CORE LOG — SAMPLE RECORD

 PROPERTY 92119 CS

 HOLE No. E-21-45

 SHEET No. 4 of 6

DEPTH	DESCRIPTION	MINERALIZATION	SAMPLE	FROM	TO	m	Cu %	Mo %	Au ppm	Ag ppm
148.8	PICRITE (cont'd)									
	153.2 - 161.0 - Lost core, tube unlabeled	barren	4523	155	160	5	.06	.001		
	162.0 - 40 cm w. sh. brown resinous reactive min. probably siderite.	"	4524	160	165	5	.10	.001		
	170.2 - 171.3 - DiORITE dike, and. grey mg., top chert. interbedded, thin shd & mixed w. st	barren	4525	165	170	5	.23	.002		
173.0	Massive, med. to dark grey greenish cast, mg. matrix, fairly uniform bititic, wk shd Py & Jossan Cpy	<.5% Cpy & Py	4526	170	175	5	.11	.004		
		<.5% Py & Cpy	4527	175	180	5	.04	.002		
		<.5% Py & Cpy	4528	180	185	5	.09	.004		
	176.5 - 177.0 - Lost core, tube unlabeled	barren	4530	185	190	5	.01	.001		
182.0	PICRITE as described, fairly hard tough & only moderately fractured, top chert shd w. heavy Py & Cpy over 15 cm	71% Py w Cpy	4531	190	195	5	.09	.007		
	193.2 - 40 cm carrying streaks of red brown oxide, probably limonite, consists of fine shd of coarse cr Py, apparently removed by Magnetite in form rimmed by oxide	<.5% Py	4532	195	200	5	.13	.001		
		COMPOSITE		115	200	85	.07	.002	.03	9









# DIAMOND DRILL CORE LOG - SAMPLE RECORD

PROPERTY 921/3 CS

HOLE No. C-81-96

SHEET No. 2 of 2

DEPTH	DESCRIPTION	MINERALIZATION	SAMPLE	FROM	TO	m	Cu %	Mo %	Au ppm	Ag ppm
55.3	PICRITE: block, f.g. to m g, soft.	<1% Cpy	4541	55	60	5	.28	.002		
	scaled Cpy,									
		1% Cpy & Py	4542	60	65	5	1.27	.001		
59.8	HYBRID DICRITE: med grey green,									
	orig. to f.g.,	1% Cpy & Py	4543	65	70	5	.65	.002		
	scaled bands pinkish K spar alt",									
	matrix f.g. Magnetite, wk to fair scaled	1-2% Cpy & Py	4544	70	75	5	1.28	.005		
	Cpy & Py, med, silt'd,									
		2-3% Cpy & Py	4545	75	80	5	1.57	.002		
74.5	90 cm black lg. 'Trap' dkt c.									
	silt'd Picrite,	barren	4542	80	85	5	.19	.002		
77.7	10 cm heavy Cpy w. dk grey siderite									
82.5	50 cm fault w. clayey br, 2 cm	<.5% Cpy	4543	85	90	5	.07	.001		
	qtz. w. fluvite & dissem Cpy									
94.5	20 cm rusty pink K spar band	barren	4544	90	95	5	.22	.001		
	qtz,									
96.9	2 cm. qtz. str w. dk to purple	<.5% Cpy	4545	95	100	5	.10	.001		
	fluvite & crse dissem Cpy									
99.3	10 cm. gouge w. br									
100.0	END OF HOLE	COMPOSITE		40	95	55	.56	.001	.31	11









# DIAMOND DRILL CORE LOG - SAMPLE RECORD

DEPTH	DIP	BEARING AST.
COLLAR	48°40'	S-45°-W
100m	46 1/4	
200m	49°	

PROPERTY 921/9CS COMET CLAIM \_\_\_\_\_ HOLE NO. C-81-19  
 LATITUDE 9927.65-N STARTED 1981-03-25 CORE SIZE BC  
 DEPARTURE 10358.24-E FINISHED 1981-04-05 SECTION 698  
 ELEVATION 733.36 TOTAL LENGTH 201.5  
 LOGGED BY J.D. Murphy

DEPTH	DESCRIPTION	MINERALIZATION	SAMPLE	FROM	TO	m	Cu %	Mo %	Au ppm	Ag ppm
0.0	CASING: stick up 0.9m, casing pulled									
14.2	HYBRID DIORITE: med grey to dark grey, bititic, mg, massive, fairly uniform. Pan to good Cpy min w Py & minor Plc, minor scald epidote & pink K-spar bands	<1% Cpy	4572	14.2	20	5.8	1.23			
14.2-18.0	dark grey, shaly bititic, good dissol Cpy, contact gradually arbitrary									
19.2	32 cm fault in fragments a gouge w 45°	<5% Cpy w Py	4573	20	25	5	.47			
36.1	20 cm grt.-gypsum vit. a 55-40 w 50% Cpy	<1% Py & Cpy	4574	25	30	5	.74			
45.0-50.8	some fair banding a.50 probably related to shearing at similar angle,	1% Cpy & Py	4575	30	35	5	.63			
		2% Cpy	4576	35	40	5	1.37			
		1% Cpy & Py	4577	40	45	5	.61			
		<1% Cpy	4586	45	50	5	.80			

# DIAMOND DRILL CORE LOG - SAMPLE RECORD

 PROPERTY 921/9 CS

 HOLE No. C-81-49

 SHEET No. 2 of 7

DEPTH	DESCRIPTION	MINERALIZATION	SAMPLE	FROM	TO	m	Cu %	Mo %	Au ppm	Ag ppm
50.8	PICRITE: black, f-g, soft, normal appearance, top chert sharp w 35, barren,	<1% Py & Cpy	4587	50	55	5	.42			
53.3	HYBRID DIORITE: light to dark grey, not uniform aspect, some included picrite, some scald patches Cpy, several slips w 55-60	COMPOSITE		14.2	55	40.8	.75	.002	.51	9
55.3	PICRITE: similar to previous but strongly slid & faulted, barren 58.8 - 5 cm gouge	barren	4588	55	60	5	.04			
13.0 - 74.0 - Fault Zone, first 2.0 m pure gouge & fragments										
65.3 - 68.6 - Lost CORE, mud & sand, no recovery,										
68.6 - 74.0 - strongly shattered & sheared w. abundant gouge, overall attitude of fault ~ 50,										
81.9 - 85.6 - Fault Zone, 50 cm shattered zone cemented w. glc - gypsum, sharp slip w 35 w start X <sup>n</sup> , balance broken w. abundant gouge										

# DIAMOND DRILL CORE LOG — SAMPLE RECORD

 PROPERTY 921/9 CS

 HOLE No. C-81-49

 SHEET No. 3 of 7

DEPTH	DESCRIPTION	MINERALIZATION	SAMPLE	FROM	TO	m	Cu %	Mo %	Au ppm	Ag ppm
85.3	PICRITE (cont'd)									
	86.0 - 85 cm diabtic dike, med grey, m.g., 2-3% fine dissemin Py									
	bltn. clst @ 90-92									
	88.0 - 35 cm diabtic dike as above									
	clst blacky									
	90.5 - 50 cm fault br & gouge @ 45°									
91.0	DICRITIC DIKE: med grey, m.g., 41% dissemin Py, clst broken									
92.3	PICRITE: dark grey, f.g., soft, normal appearance, barren.									
	96.7 - 100.0 - Fault Zone, 90% pure gouge & rock frags, minor gypsum, minor fine Py, attitude est'd @ 35-40.									
	100.4 - 104.6 - NQ core, first 30 cm cored part of BQ hole,									
	104.6 - 110 cm lost core,									
	108.6 - 112.0 - weakly stnd x" w. 5% med white calc stns.									
	111.3 - 50 cm diabtic mat'd + pinkish									
113.0	Est. med. clst	Barren	4931	115	120	5	.06			











# DIAMOND DRILL CORE LOG - SAMPLE RECORD

DEPTH	DIP	BEARING AST.
COLLAR	50°00'	S-45°-N
100m	49°	

PROPERTY 921/9 CS COMET CLAIM ..... HOLE NO. C-81-50  
 LATITUDE 10122.70-N STARTED 1981-03-26 CORE SIZE BQ  
 DEPARTURE 10060.91-E FINISHED 1981-04-01 SECTION 1043  
 ELEVATION 714.63 m TOTAL LENGTH 150.0 m  
 LOGGED BY J.D. Murphy

DEPTH	DESCRIPTION	MINERALIZATION	SAMPLE	FROM	TO	m	Cu %	Mo %	Au ppm	Ag ppm
0.0	CASING: struck @ 0.4 m, casing pulled.									
6.3	HYBRID DIORITE: dark green to mud grey with greenish casts, n.g. to f.g. numerous wk slips & intermediate angles.									
	121 - 50 cm lost core									
	24.6 - 80 cm fault zone, fragments & gouge, attitude indefinite.									
	25.4 - 30.9 - light grey 'bleached', strongly aplitic, soft, grades to normal appearing hybrid diorite.									
	34.7 - 11 m lost @ 4 m Cpy following core axis, 30 cm									
	52.5 - 55.0 - 10% white carb. as irreg. threads & str	Darren	4910	50	55	5	.02			
	to 10 m @ 30-45, Darren, 5 cm str @ 45 @ end 2",									
57.4	TRANSITION ZONE: granitic mat. to 70% interbedded & mixed w. biotite quartz, scald	<1% Bz, 0 Cpy	4911	55	60	5	.03			

# DIAMOND DRILL CORE LOG - SAMPLE RECORD

 PROPERTY 921/9 CS

 HOLE No. C-81-50

 SHEET No. 2 of 4

DEPTH	DESCRIPTION	MINERALIZATION	SAMPLE	FROM	TO	m	Cu %	Mo %	Au ppm	Ag ppm
59.7	PILRITE: black, f.g., wkly bx'd in part, irreg. patches diorite, minor Py. as strcs to 1cm @ 50 near top chert,									
		barren	4958	60	65	5	.03			
62.2	DIORITE: dark grey, m.g., fresh appearance w. prominent hornblende laths showing wk. flow banding @ ~ 35. strongly magnetic, contains to 5% f.g. dissen Py. cherts broken but appear to be at high angles.									
		barren	4959	65	70	5	.05			
68.7	PILRITE. predominantly black to dark grey, w some light green & med. grey and x's, soft, barren appearance, strongly faulted as noted.									
71.4 - 74.2	Fault Zone, 50-60% gouge & fragments w strongly bx'd zones & numerous clayey slips w 50-35, 5-10% white to pink strcs & frags, overall light green cast attributed to chlorite or talc.	barren	4960	70	75	5	.05			
77.5 - 83.2	light grey-green bed. w. abundant fine conch plus strcs, wk lpy.	barren	4961	75	80	5	.03			



# DIAMOND DRILL CORE LOG - SAMPLE RECORD

 PROPERTY 921/9 CS

 HOLE No. C-81-50

 SHEET No. 4 of 4

DEPTH	DESCRIPTION	MINERALIZATION	SAMPLE	FROM	TO	m	Cu %	Mo %	Au ppm	Ag ppm
110.7	PIRIT: dark grey to greenish cast, f.g., soft, barren appearance, top det shel @ 35	<1% Cpy	4217	110	115	5	.17			
110.7 - 113.4	Fault Zone, broken exposed, abund gouge,									
113.2 - 70 cm	w. 40-50% white carb slts following core									
	axis & w. fair Py & Cpy, Fault fault shel w. co,	barren,	4218	115	120	5	.07			
118.4 - 119.7	Fault Zone w. dy & abund gouge, altitude ≈ 45,									
130.0 - 10 cm	bed fault w. abund gouge @ 45,									
140.3 - 30 cm	shel @ 50 w. minor carb slts & Py									
143.5 - 10 cm	gouge followed by 50 cm dark grey gabbroic dike, f.g. w. mg. white phenos, clks & 80-90, barren,									
149.9 - 30 cm	dy & gouge @ 45									
150.0	END OF HOLE									
		COMPOSITE		80	115	35	.35	.003	.17	10



# DIAMOND DRILL CORE LOG - SAMPLE RECORD

DEPTH	DIP	BEARING AST.
COLLAR	49°52'	Z25°
100m	52 1/2°	
200m	56°	

PROPERTY 921/9 CS COMET CLAIM ..... HOLE NO. C-81-57  
 LATITUDE 101°27.64-N STARTED 1981-04-02 CORE SIZE BQ  
 DEPARTURE 10136.30-E FINISHED 1981-04-09 SECTION 1043  
 ELEVATION 714.64 m TOTAL LENGTH 225.0 m  
 LOGGED BY J.D. MURPHY

DEPTH	DESCRIPTION	MINERALIZATION	SAMPLE	FROM	TO	m	Cu %	Mo %	Au ppm	Ag ppm
0.0	CASING: stuck up 0.9m, casing pulled,									
8.0	HYBRID DICRITE: med. grey w greenish cast, m.g., stringy shid, bid & altid, soft, moderate scat'd epidote patches, few Py. min. v. little or no Cpy noted, abund. fine secondary carb, shearing attitude $\approx 45$ ,  87-1.0m Pierre bid	<1% Py	4935	8	15	7	.04			
17.7-19.0	Fault Zone, nearly pure clayey gouge w. fragments of Pierre, diorite & gte. carb. vein matl, apparent sheared contact $\approx 50$	<5% Py	4936	15	20	5	.08			
19.0	PIERRE: black to dark grey, v. broken & bid. w. abund. gouge, overall muddy appearance, extremely blocky, barren,	barren	4937	20	25	5	.91			
28.0-29.6	Fault Zone, broken, incoherent, abund gouge, attitude indeterminate, possibly $\approx 30$	barren	4938	25	30	5	.15			











# DIAMOND DRILL CORE LOG - SAMPLE RECORD

DEPTH	DIP	BEARING AST.
COLLAR	42°20'	S-45°-W
100m	42 1/2°	

PROPERTY 921/3 CS (COMET) CLAIM ..... HOLE NO. C-81-52  
 LATITUDE 3827-10-N STARTED 1981-04-06 CORE SIZE BQ  
 DEPARTURE 10376.38-E FINISHED 1981-04-08 SECTION 612  
 ELEVATION 748.20 TOTAL LENGTH 100.0m LOGGED BY J.D. Murphy

DEPTH	DESCRIPTION	MINERALIZATION	SAMPLE	FROM	TO	m	Cu %	Mo %	Au ppm	Ag ppm
0.0	CASING stick up 0.3m									
37.7	DIORITE: med to light gray with some darker pinkish bands, m.g. fairly fresh appearance except for med. epidote alluv. contains fairly even distribution of f.g. Py w Cpy to 1% in 3-5% f.g. dissim Magnetite, calc. white frag	1% Py w Cpy	4972	37.7	45	7.3	.06			
		1% Py w Cpy	4973	45	50	5	.04			
		"	4974	50	55	5	.09			
		1% Py w Cpy	4975	55	60	5	.10			
	58.5-30 cm purple, top det w 40, blm. blocky, irreg.									
	53.4-40 cm purple, top det sharp w 40, blm. broken	"	4976	60	65	5	.15			
		"	4977	65	70	5	.06			
70.2	PICKRITE: black, f.g. massive, some strongly shud & fragmented x <sup>ns</sup> , wk dissim f.g. Py,	barren	4978	70	75	5	.03			
		"	4979	75	80	5	.01			
	71.0-77.0 - strongly shud & broken x <sup>ns</sup> , 83.7-75 cm monzonite dike, light gray, soft, granitic, barren except more to Py sim common to 20 blm. det.	"	4980	80	85	5	.06			





# DIAMOND DRILL CORE LOG - SAMPLE RECORD

DEPTH	DIP	BEARING AST.
COLLAR	52°36'	S-45°-W
100m	53°45'	
200m	53°45'	

PROPERTY 921/9 LS COMET CLAIM ..... HOLE NO. C-81-53  
 LATITUDE 9904.79 STARTED 1981-04-08 CORE SIZE BQ  
 DEPARTURE 10451.06 FINISHED 1981-04-13 (abandoned) SECTION 612  
 ELEVATION 742.07 TOTAL LENGTH 199.0m LOGGED BY J.D. Murphy

DEPTH	DESCRIPTION	MINERALIZATION	SAMPLE	FROM	TO	m	Cu %	Mo %	Au ppm	Ag ppm
0.0	CASING: stuck up 0.4 m, casing pulled									
16.5	HYBRID DIORITE: med. grey w. several pink K spars bands to 1 cm @ 30-50, m.g., fairly massive except final metre coarsely brd, core surface has corroded appearance, no sulphides noted, scat'd epidote	<.5% Py	4981	16.5	20	3.5	.08			
		<.5% Cpy & Py	4982	20	25	5	.13			
22.5	PIRITE: dark grey, shd & brd w. abund grey diorite frags, highly brittle in part, v. soft, few scat'd blebs Cpy. w. carb. gypsum str. @ 15-40; 24.2- 90 cm diorite dike, top clt @ 55, blue clt strongly faulted @ 40 25.1- 35 cm gouge,									
27.7	MONZONITIC DIKE: med. to light grey, m.g., relatively competent & unshattered, one gypsum str. near Py. as fracture coatings & dissemin w Cpy	<.5% Py w Cpy	4983	25	30	5	.54			

# DIAMOND DRILL CORE LOG -- SAMPLE RECORD

 PROPERTY 221/9 CS

 HOLE No. C-81-53

 SHEET No. 2 of 5

DEPTH	DESCRIPTION	MINERALIZATION	SAMPLE	FROM	TO	m	Cu %	Mo %	Au ppm	Ag ppm
30.1	<b>Pirite:</b> block, l.g. barren strongly slid & broken	barren	4984	30	35	5	.43			
	w. abund. gouge	<.5% Cpy	4985	35	40	5	.30			
	38.6-40 cm. Dunitic dike, bichitic									
	w. fair dissem Cpy	barren	4986	40	45	5	.10			
46.7	<b>HYBRID DUNITES:</b> med. grey to dark grey w. th. assimilated pyrite, m.g., minor epidote, relatively unalt'd, overall non uniform aspect, little shearing or faulting, significant Cpy as crse blk w. gypsum, plus fine dissem's together w. Py uniformly distributed through out,	<1% Cpy & Py	4987	45	50	5	.51			
		<1% Cpy & Py	4988	50	55	5	.45			
		1% Cpy & Py	4989	55	60	5	.71			
	58.9-50 cm. gypsum wh. w. 15-20 w. 10-15% crse Py & Cpy	<1% Cpy & Py	4990	60	65	5	.31			
	63.9-25 cm. pyrite w. 35	<1% Cpy & Py	4991	65	70	5	.77			
		COMPOSITE		20	70	50	.42	.005	84	8
		<1% " "	4992	70	75	5	.19			
		<1% Py & Cpy	4993	75	80	5	.20			
		" "	4994	80	85	5	.31			
		<.5% Py & Cpy	4995	85	90	5	.06			

# DIAMOND DRILL CORE LOG — SAMPLE RECORD

 PROPERTY 921/9 CS

 HOLE No. C-81-53

 SHEET No. 3 of 5

DEPTH	DESCRIPTION	MINERALIZATION	SAMPLE	FROM	TO	m	Cu %	Mo %	Au ppm	Ag ppm
46.7	HYBRID DIORITE (cont'd)									
	90.7 - 30 in. pyrite @ 30	<5% Py w Cpy	4996	90	95	5	.03			
	96.8 - 107.4 - v. blocky, broken zone	<5% Py	4997	95	100	5	.10			
	intermittently stnd w interwined bands of pyrite to	<5% Py	4998	100	105	5	.04			
	appx. 90%, minor Py but no Cpy noted.	<5% Py & Cpy	4999	105	110	5	.27			
		<1% Cpy & Py	5000	110	115	5	.51			
		COMPOSITE		70	115	45	.20	.002	.14	7
	134.5 - 140.0 - wkly bnd & recemented	<5% Py	4601	115	120	5	.05			
	zone w 30% pyrite bands	"	4602	120	125	5	.03			
	& fragments	"	4603	125	130	5	.02			
		"	4604	130	135	5	.03			
		"	4605	135	140	5	.02			
		<5% Py	4606	140	145	5	.02			
		"	4607	145	150	5	.03			
		<1% Py	4608	150	155	5	.04			

# DIAMOND DRILL CORE LOG — SAMPLE RECORD

 PROPERTY 921/9 CS

 HOLE No. C-81-53

 SHEET No. 4 of 5

DEPTH	DESCRIPTION	MINERALIZATION	SAMPLE	FROM	TO	m	Cu %	Mo %	Au ppm	Ag ppm
146.1	HYBRID DIORITE (cont'd)									
		4.5% Py	4609	155	160	5	.05			
		41% Py	4610	160	165	5	.03			
		4.5% Py	4611	165	170	5	.03			
173.9	PICRITE: dark grey, f.g. soft, wkly hard, no sulphides noted, top chert broken, bot. chert w 55	barren	4612	170	175	5	.03			
175.2	HYBRID DIORITE: as described previously, very minor sulphides,	barren	4613	175	180	5	.02			
178.9	PICRITE: black, f.g., soft, wkly hard, some silicid. hard dark grey lundy, top chert w 55. bot. chert broken & clayey									
180.2 - 80 cm	hybrid diorite, stud, broken, silty & talcous, cherts indefinite barren.	barren	4614	180	185	5	.03			
184.6	HYBRID DIORITE: as described but containing 5-10% clear to white gypsum str to 2 cm filling gaps fractures w various	"	4615	185	190	5	.02			
194.0	angles, no sulphides noted.	barren	4616	190	195	5	.04			



# DIAMOND DRILL CORE LOG - SAMPLE RECORD

DEPTH	DIP	BEARING AST.
COLLAR	-50°	225°
95m	-49°	←

PROPERTY 921/9CS CLAIM   HOLE NO. CS-81-54  
 LATITUDE 99.70 STARTED MAY 27/81 CORE SIZE BQ  
 DEPARTURE 10397 FINISHED MAY 30/81 SECTION 69FW  
 ELEVATION 747m TOTAL LENGTH 98.7 LOGGED BY N.E. Vello

DEPTH	DESCRIPTION	MINERALIZATION	SAMPLE	FROM	TO	m	Cu %	Mo %	Au ppm	Ag ppm
0.0	Casing									
11.3	Diorite Grey, medium grained, mod. alt., with weak breccia and gouge zones 14.4 - becomes light creamy grey, bleached 16.7 - becomes grey green, medium grained, lightly to mod. alt - 5-10% white calcite stringers up to 5mm Sulfurized throughout, with epidote alt. along fractures Wk. patchy K alt. Poorly defined 60° (?) contact to	Very sparse P7 Cp Some Some								
43.2	Picrite - Dark grey-green to black, with 15-20% gouge seams, mostly about 45° - mostly	spse P7 Cp spse P7 Cp	5272 73	40 45	45 50	5 5	0.05 0.12			















# DIAMOND DRILL CORE LOG - SAMPLE RECORD

PROPERTY

921/9 CS

HOLE No.

CS-81-56

SHEET No.

2

of

5

DEPTH	DESCRIPTION	MINERALIZATION	SAMPLE	FROM	TO	m	Cu %	Mo %	Au ppm	Ag ppm
	lightly altered, possibly monzonite, but K-spar probably secondary Quite pronounced epidote alt along fracture,									
	52.0 - becomes med. grey, more altered, with texture mostly destroyed - mafics now biotite rather than chlorite. Abrupt but indistinct contact to	Spse P7, tr CP7								
66.7	Picrite - black, brecciated and gassy, but retaining patches of characteristic porphyritic or fragmental texture Broken core to									
<del>69.9</del>										
69.9	Diorite Grey medium grained, with patchy K spar alt Sharp 40° slip contact to		Spse P7 CP							

# DIAMOND DRILL CORE LOG -- SAMPLE RECORD

 PROPERTY 921/9CS

 HOLE No. CS-81-56

 SHEET No. 3 of 5

DEPTH	DESCRIPTION	MINERALIZATION	SAMPLE	FROM	TO	m	Cu %	Mo %	Au ppm	Ag ppm
70.8	FAULT. Soft picrite muddy grey, with complete core recovery - 40° shear planes can be seen in mud									
77.0	Picrite Dark green, muddy, fine, but with patches Spse P <sub>7</sub> of of typical rounded dark matrix in a finer matrix strongly fractured - core breaks when picked out of box sharp, irregular 60° contact to		5222	75	80	5	0.11			
81.1	Feldspar Porphyr Diorite? light grey, fine grained, with lath like feldspar phenos to 2mm in a fine matrix - mod fract- ured and altered, faced by very fine grey Qtz veins 40° contact to	Spse P <sub>7</sub>	5223	80	85	5	0.19			
86.1	Picrite - Dark green, strongly		5224	85	90	5	0.20			









# DIAMOND DRILL CORE LOG -- SAMPLE RECORD

PROPERTY

921/9 CS

HOLE No.

5-81-19

SHEET No.

2

DEPTH	DESCRIPTION	MINERALIZATION	SAMPLE	FROM	TO	m	Cu %	Mo %	Au ppm	Ag ppm
20.6	HYBRID PICRITE (contd)	<5% Cpy + Py	5018	20	25	5	.16	.001		
	35.2- 80 cm. brecciated zone w. white calcite cement, scat.d cpx Py.	"	5020	25	30	5	.09	.004		
		"	5021	30	35	5	.29	.002	ref 5	
	62.1- 20 cm fault bx. sharp @ 25	"	5022	35	40	5	.26	.007		
		"	5023	40	45	5	.20	.005		
		"		20	45	20	.10	.004		
		"	5024	45	50	5	.08	Tr		
67.0	HYBRID DIORITE: medium gray, m. grained, non uniform aspect w 5-10' unreplaced Picrite, weakly fractured or 'crackled' to brecciated in part, w. scat.d epidote alt'n, w. scat.d Cpy. a Py. min, btm. chert gradational.	"	5025	50	55	5	.09	Tr		
		"	5026	55	60	5	.08	.004		
		"	5027	60	65	5	.13	.004		
		"	5028	65	70	5	.04	Tr		
	73.2- 60 cm bx. band @ 45-55	"	5029	70	75	5	.09	.004		
83.5	HYBRID PICRITE: dark gray to light gray green where strongly silicid, top chert broken a shud @ 35-40 for 30 cm, clayey gauge @ 83.9, near barren except 5cm strip Py. w. epdote @ 50 at 82.8	barren	5030	75	80	5	.03	.003		
		barren	5031	80	85	5	.08	.012		



# DIAMOND DRILL CORE LOG — SAMPLE RECORD

DEPTH	DIP	BEARING AST.
COLLAR	48°10'	203°
100 m	50°	

PROPERTY 921/9 CS SLEADRETT CLAIM ..... HOLE NO. 5-81-20  
 LATITUDE 7746.12-N STARTED 1981-04-15 CORE SIZE BQ  
 DEPARTURE 8825.05-E FINISHED 1981-04-22 SECTION 1200-W  
 ELEVATION 967.0 TOTAL LENGTH 156.4 m 667m N of R  
 LOGGED BY J.D. Murphy

DEPTH	DESCRIPTION	MINERALIZATION	SAMPLE	FROM	TO	m	Cu %	Mo %	Au ppm	Ag ppm
0.0	CASING: stick up 0.7 m; casing pulled									
24.0	HYBRID PIRITE: dark grey to black w. abund light grey feldspathic intrusive patches & irregular str. m.g. to f.g. overall non uniform aspect due to irregular distribution of feldspathic intrusive matl, hardness varies according to degree of silicification from v. soft serpentinised pyrite to hard & brittle where completely replaced, f.g. Pyrite distributed throughout, Chalcopyrite as fine disseminations, coarse blebs & occasional str, occ. grain of soft, brittle dark red-brown min tentatively identified as Bornite, 5-10% Magnetite as f.g. discrete xls disseminated throughout, numerous narrow (5 mm) grey white feldspathic str. @ 30-90, minor brecciation & shearing, overall v. competent rock w. excellent core recovery	~5% Py & Cpy	5001	24	30	6	.06	.004		

# DIAMOND DRILL CORE LOG — SAMPLE RECORD

 PROPERTY 921/9 CS

 HOLE No. 5-81-20

 SHEET No. 2 of 4

DEPTH	DESCRIPTION	MINERALIZATION	SAMPLE	FROM	TO	m	Cu %	Mo %	Au ppm	Ag ppm
24.0	HYBRID PICRITE (cont'd)									
	31.0-33.9- brecciated in part w. several distinct slips	<1% Py & Cpy	5002	30	35	5	.17	.004		
	w 30-50,	1% Cpy & Py	5003	35	40	5	.25	.015		
		1% Cpy & Py	5004	40	45	5	.22	.009		
		1% Cpy & Py	5005	45	50	5	.12	.001		
		<.5% Cpy & Py	5006	50	55	5	.09	.003		
		<1% Cpy & Py	5007	55	60	5	.15	.005		
	75.5- 65 cm light gray felsic dike w 50-55, contains 5 cm band picrite w. 15-20% Cpy	<.5% Cpy & Py	5008	60	65	5	.04	.003		
	79.2- 75 cm breccia zone w 5-10% white calcite & 20-25% brownish buff siderite remaining frags, top chkt. indefinite, btm chkt. sharp w 40	<.5% Cpy & Py	5009	65	70	5	.08	.005		
	79.4- 50 cm breccia zone w calcite & siderite cement, one 2 cm str. drusy calcite, chkt w 20-25,	"	5010	70	75	5	.17	.015		
	81.2- 83.5- wkly brd feldspathic zone w 30-40% introduced grey-green felds, wk. banding matrix w 25-30,	"	5011	75	80	5	.14	.004		





# DIAMOND DRILL CORE LOG - SAMPLE RECORD

DEPTH	DIP	BEARING AST.
COLLAR	52°20'	Z03°
100m	49°	
200m	46°	
274m	46°	

PROPERTY ..... 921/9 CS SEADRIET ..... CLAIM ..... HOLE NO. 5-81-21  
 LATITUDE ..... 7830.67-N ..... STARTED 1981-04-22 ..... CORE SIZE BQ  
 DEPARTURE ..... 8805-85-E ..... FINISHED 1981-04-26 ..... SECTION 1250-W  
 ELEVATION ..... 960.84 ..... TOTAL LENGTH 274 m ..... 127.3m Net B  
 LOGGED BY J.D. Murphy

DEPTH	DESCRIPTION	MINERALIZATION	SAMPLE	FROM	TO	m	Cu %	Mo %	Au ppm	Ag ppm
0.0	CASING stick up 0.3m. casing pulled									
8.7	HYBRID PICRITE: dark grey w light green epidote mottling, non uniform aspect w. 15-20% very dioritic & feldspathic patches, fairly hard & competent, excellent recovery, wk. dissem Py & Cpy,	<5% Cpy & Py	5044	8.7	15	6.3	.02	.001		
		<5% Py & Cpy	5045	15	20	5	.08	.004		
		"	5046	20	25	5	.02	.002		
		"	5047	25	30	5	.03	.001		
	35.3-36.6' dolomite band, white to creamy buff, w/ly	"	5048	30	35	5	.04	.002		
	br'd in part w recrystallized picrite frag, wk Py & Cpy	1% Py & Cpy	5049	35	40	5	.04	.006		
		<5% Py & Cpy	5050	40	45	5	.05	.002		
		1% Py & Cpy	5051	45	50	5	.05	.005		
		<5% Py & Cpy	5052	50	55	5	.04	.001		
		"	5053	55	60	5	.05	.003		
		"	5054	60	65	5	.07	.004		







# DIAMOND DRILL CORE LOG - SAMPLE RECORD

 PROPERTY 921/9 CS

 HOLE No. 5-81-21

 SHEET No. 4 of 7

DEPTH	DESCRIPTION	MINERALIZATION	SAMPLE	FROM	TO	m	Cu %	Mo %	Au ppm	Ag ppm
151.9	HYBRID Diorite: as described	<5% Py	5082	150	155	5	.02			
	previously, 5-10% pyrite bands & frags, w/ disseminated sulphides, overall non uniform aspect,	<5% Py & Cpy	5083	155	160	5	.15			
		<5% " "	5084	160	165	5	.06			
160.8	20 cm pyrite band well sh'd w/ 30,									
164.5	TRANSITION ZONE: pyrite interbedded & intermixed w. light buff Muscovite mg to f-g, roughly equal proportions, muscovite carries int. disseminated Cpy, altitude approx. 30,	<5% Py & Cpy	5085	165	170	5	.14			
168.0	HYBRID Granite: as described previously	1% Cpy & Py	5086	170	175	5	.62			
169.3	40 cm. fault zone, brecciated & clayey, altitude indeterminate but interpreted as 45, fair Cpy, in part,	1% Cpy & Py	5087	175	180	5	.38			
		1% Cpy & Py	5088	180	185	5	.48			
		<5% Py & Cpy	5089	185	190	5	.25			
192.0	1.0 m br- carb zone w. 40-50 % grey to yellowish carb and grey feldspathic mat, some sulphides sh. carbonate followed by clay etc.	"	5097	190	195	5	.12			
		2 1/2% Cpy & Py	5098	195	200	5	.24			

# DIAMOND DRILL CORE LOG -- SAMPLE RECORD

 PROPERTY 921/9 CS

 HOLE No. 5-81-21

 SHEET No. 5 of 7

DEPTH	DESCRIPTION	MINERALIZATION	SAMPLE	FROM	TO	m	Cu %	Mo %	Au ppm	Ag ppm
168.0	HYBRID PIRITE (contd)	< 5% Cpy & Py	5099	200	205	5	.09			
		" "	5100	205	210	5	.04			
206.9	HYBRID DIORITE: med. to dark grey w minor pyrite inclusions, top ctet w/ky shid @ 15. bla. ctet gradational, irreg @ 26, w/ Cpy & Py	< 1% Cpy & Py	5101	210	215	5	.19			
213.1	HYBRID PIRITE: as described, abund feldspathic & dioritic matl to 30%, w/ky breid in part w carb. cement, veining @ 50, carries fair to good Cpy w Py	1-2% Cpy & Py	5102	215	220	5	1.00			
	218.0 - 40 cm grey green felsite d.ike @ 50, f.g., barren,									
220.8	CARBONATE ZONE: 70-80% light grey to buff carb. intimately mixed w pyrite remnants, mottled, non uniform aspect, fair Cpy & lesser Py as crse blebs & dissems, content of feldspathic matl increases down hole, sect'd mg. lite blue, soft min, zeolite (?)	1% Cpy & Py	5103	220	225	5	.51			

# DIAMOND DRILL CORE LOG - SAMPLE RECORD

 PROPERTY 921/9 CS

 HOLE No. 5-81-21

 SHEET No. 6 of 7

DEPTH	DESCRIPTION	MINERALIZATION	SAMPLE	FROM	TO	m	Cu %	Mo %	Au ppm	Ag ppm
220.8	CARBONATE ZONE: (cont'd)									
	start x" sharp @ 30-55, bln. chf irreg @ 55,									
		<1% Cpy & Py	5104	225	230	5	.46			
229.7	FELSITE DIKE: light creamy grey, f.g., contains significant f.g. carb., barren except for minor patches Cpy. w. 5 mm dark (pyrite?) bands w 45-50, bln. chf. @ 50,									
		<1% Cpy & Py	5105	230	235	5	.35			
232.1	HYBRID FELSITE: as described w. 30% dioritic mult well banded w 35-50, fair scat'd Cpy w Py, bln. chf @ 35									
		<1% Cpy & Py	5106	235	240	5	.25			
234.8	DIORITE: med. grey, m.g., massive, fairly uniform except for hybrid bands, fresh appearance, minor epidote, 15% ferromagn including biotite + chloritic mult, wt scat'd sulphides including Pyrite as fracture coatings, 236.3-238.4- hybrid section banded @ 45-55.									
		45% Cpy & Py	5107	240	245	5	.08			
		" " "	5108	245	250	5	.14			



# DIAMOND DRILL CORE LOG - SAMPLE RECORD

DEPTH	DIP	BEARING AST.
COLLAR	50°00'	Z03°
100m	50°	

PROPERTY 921/9 CS Seadrift CLAIM ..... HOLE NO. S-81-22  
 LATITUDE 7719.44-N STARTED 1981-04-23 CORE SIZE B.C.  
 DEPARTURE 8867.72-E FINISHED 1981-04-26 SECTION 1150 W  
 ELEVATION 966.37 TOTAL LENGTH 160 m 58.5 m N of R  
 LOGGED BY J.D. Murphy

DEPTH	DESCRIPTION	MINERALIZATION	SAMPLE	FROM	TO	m	Cu %	Mo %	Au ppm	Ag ppm
0.0	CASING: stick up 0.5m, casing pulled									
32.0	HYBRID PICRITE: dark to med. grey, f.g. to m.g., abund. light grey dioritic patches, wk. dissemin. Py & Cpy	< 5% Py	5069	32	40	8	.16			
	36.8 - 50 cm lost core, mud reported,									
41.9	MONZONITE DIKE: light grey, m.g. becoming f.g. chilled, over final 30 cm, 5-10% chloritic ferronings, wk. dissemin. Cpy w Py, top 10% @ 90% Mn. chd. 25 to 30	< 5% Cpy & Py	5069	40	45	5	.09			
43.9	HYBRID PICRITE: as described, top chd. adjacent to dike wid over 25 cm & surrounded by brown siderite followed by white to colorless calcite,	< 5% Cpy & Py	5070	45	50	5	.10			
	54.7 - 57.6 light grey, f.g. yellowish silic. bands, could be brown.	" " "	5071	50	55	5	.08			
	58.1 - 59.0 light grey, f.g. yellowish silic. bands, could be brown.	" " "	5072	55	60	5	.45			











# DIAMOND DRILL CORE LOG — SAMPLE RECORD

DEPTH	DIP	BEARING AST.
COLLAR	50°00'	Z03°
135 m	50°	

PROPERTY 921/9 CS SEADRIFT CLAIM                      HOLE NO. 5-81-23  
 LATITUDE 7790.25-N STARTED 1981-04-27 CORE SIZE EQ  
 DEPARTURE 8735.01-E FINISHED 1981-04-29 SECTION 1300-W  
 ELEVATION 959.62 TOTAL LENGTH 136.0m 72.7m No. 12  
 LOGGED BY J.D. Murphy

DEPTH	DESCRIPTION	MINERALIZATION	SAMPLE	FROM	TO	m	Cu %	Mo %	Au ppm	Ag ppm
0.0	CASING: stick up 0.5m casing pulled									
5.0	HYBRID PICRITE: dark gray, f.g. soft picrite w 15-20 dioritic & feldspathic patches,	barren	5122	5	10	5	.02			
10.3	HYBRID DIORITE: med to dark gray, m.g. w 10-15% picrite bands & inclusions, wk. Py & Cpx 19.2-80 cm LOST CORE	<5% Cpx & Py	5123	10	15	5	.09			
24.8	HYBRID PICRITE: as described 39.9 - 41.2 - med. gray buff to greenish carb (dolomite) zone, br'd in part, top. ckt. & ls. btm. indefinite, dissem Py, minor Epy & abund. Magnetite in xls to 2mm	<5% Py	5124	35	40	5	.03			
45.4	41.5 - med. gray to light gray, m.g. to c.g. section with 40-50% grey green carb. (dolomite) to 2cm intergran with picrite derived mafic mins with high percentage of Magnetite (10-15%), feldspathic mat similar to carb. in appearance also present,	<5% Cpx & Py	5125	40	45	5	.02			



# DIAMOND DRILL CORE LOG -- SAMPLE RECORD

 PROPERTY 921/9 CS

 HOLE No. S-61-23

 SHEET No. 3 of 3

DEPTH	DESCRIPTION	MINERALIZATION	SAMPLE	FROM	TO	m	Cu %	Mo %	Au ppm	Ag ppm
80.0	HYBRID PIRITE (cont'd)	<1.5% Py & Cpy	5133	80	85	5	.04			
		" "	5134	85	90	5	.21			
		" "	5135	90	95	5	.12			
95.3 - 151m.	grey green Feldspathic carb. bud. & 40% w. good Cpy w Py	<1% Cpy w Py	5136	95	100	5	.55			
100.1 - 10 m	near massive Py w Cpy	1% Py w Cpy	5137	100	105	5	.47			
103.7	FELSIC DIKE: light grey, f.g., w/ky fractured 'crackled' appearance, dth sharp w dc, dark bands. pyrite remnants near top dth w similar angle, minor Cpy & Py.	<.5% Py	5138	105	110	5	.13			
106.8	HYBRID PIRITE: as described, w/te fair Cpy w Py	<.5% Cpy & Py	5139	110	115	5	.31			
110.3 - 1.0m	monzonite dike, light grey, m.g., 10-15% mafics, dissem. Py, dth sharp w 30 & 55,	<.5% Cpy & Py	5140	115	120	5	.19			
		" " "	5141	120	125	5	.29			
114.3	PIRITE: dark grey to black, f.g., soft, serpentinized & chloritic, mainly barren w. ool- poh. fair Cpy, ool. patches. dth	<.5% Py	5142	125	130	5	.08			
130.0	END OF HOLE		5143	130	130	6	.14			



# DIAMOND DRILL CORE LOG -- SAMPLE RECORD

 PROPERTY 921/9 CS

 HOLE No. 5-81-24

 SHEET No. 2 of 5

DEPTH	DESCRIPTION	MINERALIZATION	SAMPLE	FROM	TO	m	Cu %	Mo %	Au ppm	Ag ppm
21.9	HYBRID PICRITE (cont'd)									
	71.3 - 85.0 - detrital section with 10-15% unreplaced picrite as bands & fragmental remnants, light grey to buff, greenish cast in part, minor white calcite veining, appreciable brownish siderite, 85.6 - 50 cm Lost CORE, tube unlatched.									
91.9	FELSITE: light grey green, f.g., massive, uniform except for frequent remnants unreplaced or partly replaced picrite, sufficiently argillic to appear relatively soft when scratched, barren, well banded at 35° over 30 cm at base of ct., abund. fine carb.									
103.9	HYBRID PICRITE: light to dark grey, f.g. to m.g. to 50% light grey f.g. felsic bands partly or completely replacing picrite, wk. scald & dissem. Py & Cpy									
105.7	20 cm grey white carb. band at 45	4.5% Py & Cpy	5173	105	110	5	.04			



# DIAMOND DRILL CORE LOG -- SAMPLE RECORD

 PROPERTY 921/9 CS

 HOLE No. 5-81-24

 SHEET No. 3 of 5

DEPTH	DESCRIPTION	MINERALIZATION	SAMPLE	FROM	TO	m	Cu %	Mo %	Au ppm	Ag ppm
103.9	HYBRID PIRITE: (cont'd)	<5% Py & Cpy	5174	110	115	5	.04			
		<5% Cpy & Py	5175	115	120	5	.11			
		" "	5176	120	125	5	.11			
		<5% Py & Cpy	5177	125	130	5	.07			
		barren	5178	130	135	5	.05			
135.8	MONZONITE: light grey to med. grey green with observed pyrite, m.g., non uniform, hard & unfractured, <5% matrix where uncontaminated w. pyrite, wk. dissem. Py & Cpy, chcls w 45.	<5% Cpy & Py	5183	135	140	5	.15			
140.1	HYBRID PIRITE: dark to med grey, m.g., mixed, non uniform aspect, competent, unfractured, good Cpy w Py as stes & mixed bands to 10cm with definite orientation w 40,	1% Cpy & Py	5179	140	145	5	.67			
		.5% Cpy & Py	5180	145	150	5	.20			
		.5-1% Cpy & Py	5181	150	155	5	.20			
		71% Cpy & Py	5182	155	160	5	1.20			









# DIAMOND DRILL CORE LOG - SAMPLE RECORD

 PROPERTY 921/2 CS

 HOLE No. 5-81-25

 SHEET No. 3 of 5

DEPTH	DESCRIPTION	MINERALIZATION	SAMPLE	FROM	TO	m	Cu %	Mo %	Au ppm	Ag ppm
80.5	HYBRID DIORITE: med. grey w. greenish cast, m.g to f.g, 10% picrite remnants, wk. sulfides,	5% Cpy & Py	5159	80	85	5	.12			
83.9	HYBRID PICRITE: as described,	5% Cpy & Py	5160	85	90	5	.22			
	94.7- 80 cm. bx. zone, 5cm. left core along blue ch. @ 35,	< 5% Py	5161	90	95	5	.06			
	86.2- 20 cm. bx. zone as above,									
89.0	MONZONITE DIKE: med. grey, m.g, massive, 5-10% chloritic ferrings, wk. dissem. Py, chds @ 25 & 45,									
90.8	HYBRID PICRITE: as described, fair Cpy min. in part	< 5% Py & Cpy	5162	95	100	5	.09			
	91.4- 92.6- strongly bx'd clayey zone, 5cm core along	< 1% Cpy & Py	5163	100	105	5	.28			
	footwall @ 45,	1% Cpy & Py	5164	105	110	5	.94			
110.0	PICRITE: black to dark grey, f.g, massive, minor dioritic patches, uniform, barren,	barren	5165	110	115	5	.08			
	112.4-113.7- med. grey, m.g. biotite monzonite @ 65	barren	5166	115	120	5	.06			
125.0	END OF HOLE	barren	5167	120	125	5	.05			











# DIAMOND DRILL CORE LOG — SAMPLE RECORD

 PROPERTY 921/3 CS

 HOLE No. 5-81-27

 SHEET No. 2 of 6

DEPTH	DESCRIPTION	MINERALIZATION	SAMPLE	FROM	TO	m	Cu %	Mo %	Au ppm	Ag ppm
13.1	DILUTE (cont'd)									
	59.4 - 60.2 - Fault Zone, 20cm. shid. dark grey pyritic mat. w carb along hanging wall w ls, followed by ls con. pure quartz & rock frags. f. wall sharp w ss.									
	60.2 - 62.1 - Bt. Carb Zone, coarse br. of grey white carb frags to 3 cm. cemented by brown siderite, btm. ctet shid w ss.									
	64.6 - 10 cm strong, patchy Py w carb. sh.									
	67.9 - 70.9 - Bt. Carb Zone, light grey, wk to moderate Bt., banding w ss adjacent to top ctet, btm ctet w ls, string w ss.	barren	5217	65	70	5	.02			
70.9	HYBRID FLURITE: dark grey green, f.g. to m.g., color variations to light grey as irregular patches, epidote abn. wk. brecciation & minor irreg. carb. str. all add to non uniform appearance, wk. patchy Py. w minor Cpy	<.5% Py w Cpy	5218	70	75	5	.08			

# DIAMOND DRILL CORE LOG -- SAMPLE RECORD

 PROPERTY 921/9 CS

 HOLE No. S-EI-27

 SHEET No. 3 of 6

DEPTH	DESCRIPTION	MINERALIZATION	SAMPLE	FROM	TO	m	Cu %	Mo %	Au ppm	Ag ppm
70.2	HYBRID PIRITE: (cont'd)									
		4.5% Py w Cpy	5219	75	80	5	.06			
	77.6 - 60 cm. ht. carb. zone w 60									
		4.5% Py & Cpy	5220	80	85	5	.06			
		4.5% " "	5221	85	90	5	.07			
		" "	5222	90	95	5	.10			
		" "	5223	95	100	5	.10			
	104.2 - 90 cm. ht. carb zone w	4.5% Py	5224	100	105	5	.06			
	angular frags white calcite									
	& br. siderite cement, string									
	definite string w ss,	4.5% Py w Cpy	5225	105	110	5	.09			
	106.0 - 5 cm. compact gouge @ 30									
	followed by 30 cm. ht. carb.	4.5% Py & Cpy	5226	110	115	5	.10			
	w 20% siderite,									
	123.5 - 5 cm gouge	" "	5227	115	120	5	.08			
		" "	5228	120	125	5	.16			
		2% Cpy w Py	5229	125	130	5	1.99			
		9% Cpy & Py	5230	130	135	5	4.69			
		4% Cpy & Py	5231	135	140	5	9.05			













# DIAMOND DRILL CORE LOG - SAMPLE RECORD

PROPERTY \_\_\_\_\_

 HOLE No. S-21-28

 SHEET No. 3 of \_\_\_\_\_

DEPTH	DESCRIPTION	MINERALIZATION	SAMPLE	FROM	TO	m	Cu %	Mo %	Au ppm	Ag ppm
	126.0 - becomes light grey, bleached, possibly related to 40° and 30° 1-2cm Qtz veins and black slugs at 126.1 and 126.9 m - Fairly sharp 40° change to 128.3 - dark, relatively unaltered	1% P <sub>7</sub> Cp								
	130.4 - becomes light grey, strongly bleached, with 10% Qtz calcite stringers and black chlorite filled fractures	1% P <sub>7</sub> Cp	5256	130	135		0.09			
	136.5 - becomes grey, more equigranular, with fine hornblende phenocrysts - irregular, low angle, vague intrusive breccia contact to									
138.4	Diorite - Iron rock - Grey, medium grained, equigranular, partly but distinctly foliated (primary) with abundant fine leucosene - ccc. Angular fragments of	1-2% P <sub>7</sub> Cp	57	135	140		0.05			
		" "	58	140	145		0.13			
			59	145	150		0.15			
			60	150	155		0.05			

































# DIAMOND DRILL CORE LOG — SAMPLE RECORD

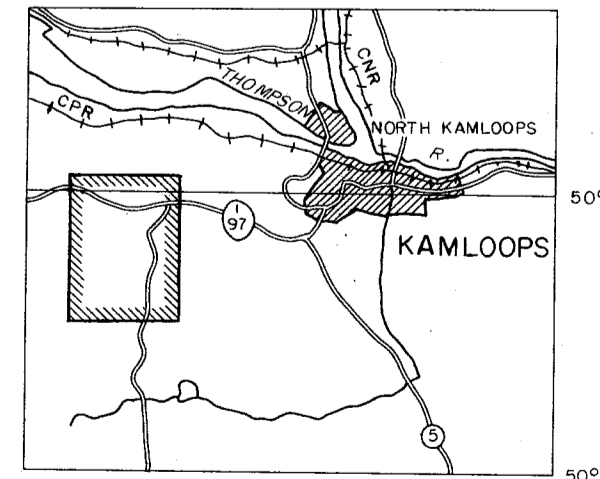
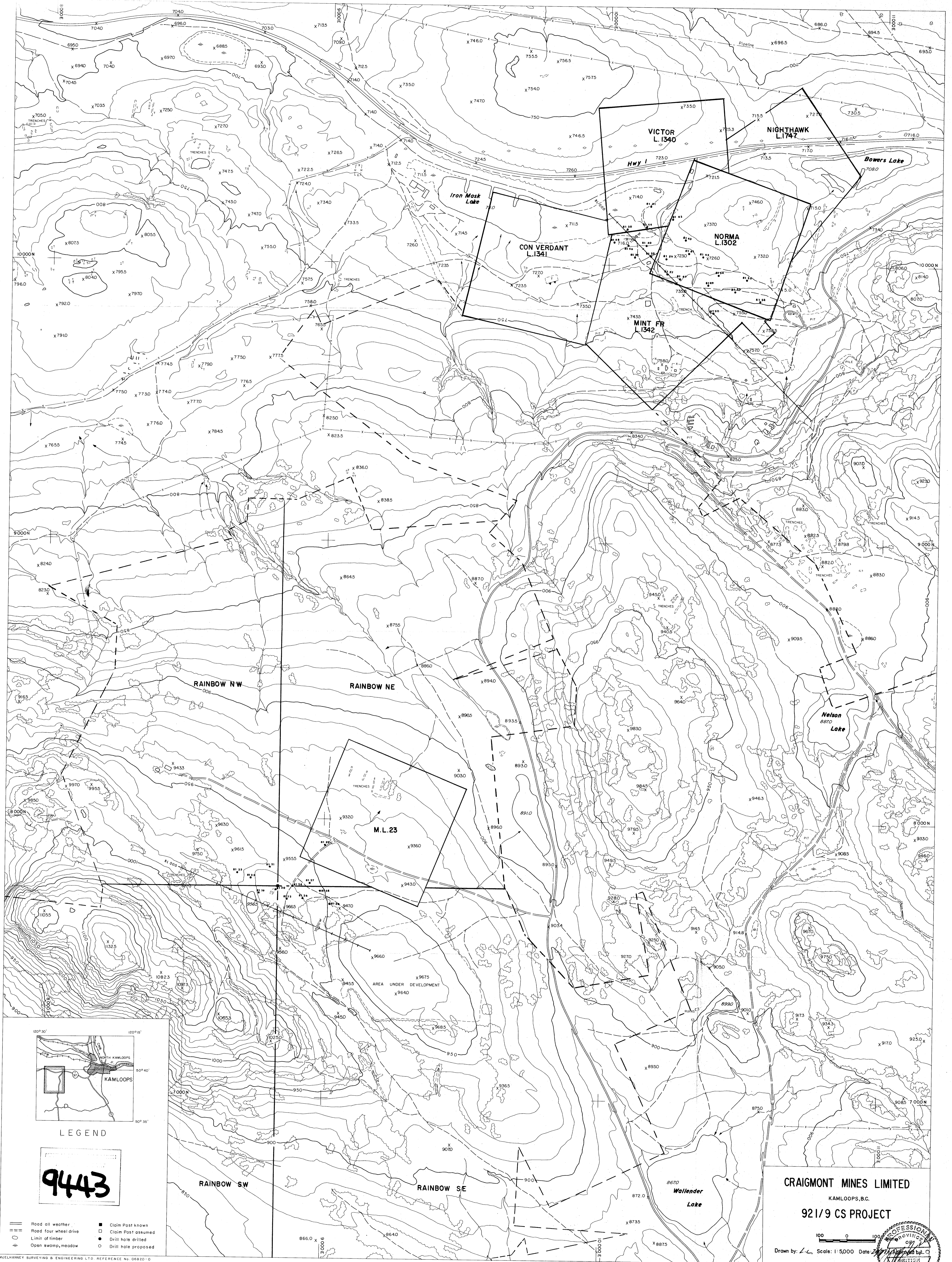
PROPERTY 921/9CS

HOLE No. 5-81-30

SHEET No. 4 of     

DEPTH	DESCRIPTION	MINERALIZATION	SAMPLE	FROM	TO	m	Cu %	Mo %	Au ppm	Ag ppm
	buff, bleached, shattered and veined by white qtz carbonate.									
	20 cm 40° vein breccia at 132.4									
	break gouge zone at 135									
	137.2 - becomes grey, m.g., relatively unaltered occasional 1-3 cm	1% B								
	thinly bedded, vuggy, chalcocite qtz-carbonate veins 80° CA.									
	1 cm breccia and gouge on 60° contact fo									
162.7	Picrite -									
	Black, fine to medium grained with characteristic texture, laced by 5% white magnesite (?) streaks - scattered 40° breccia and mud zone up to 5 cm	1% very fine cp pt	5300	165	170	5	0.14			
	175.0 - some, but with 60% minz. inclusions, bounded by 20° slip	1% fine cp pt occ. splashes	02	175	180	5	0.10			
	179.6 - becomes medium to coarse, black, with	" " "	03	180	185	5	0.05			





LEGEND

**9443**

- Road all weather
- Road four wheel drive
- Limit of timber
- Open swamp, meadow
- Claim Post known
- Claim Post assumed
- Drill hole drilled
- Drill hole proposed

**CRAIGMONT MINES LIMITED**  
 KAMLOOPS, B.C.  
**921/9 CS PROJECT**

Scale: 1:5,000 Date: 2/7/67  
 Drawn by: L.C.