

9477

PROSPECTING ASSESSMENT REPORT  
ON THE  
MINNESOTA GROUP  
IN THE  
SLOCAN MINING DIVISION  
NTS LOCATION 82F/14 W  
Latitude 49°58' Longitude 117°<sup>17</sup>~~16~~'  
ON BEHALF OF  
R.W. PEARSON AND D.J. GALLAGHER

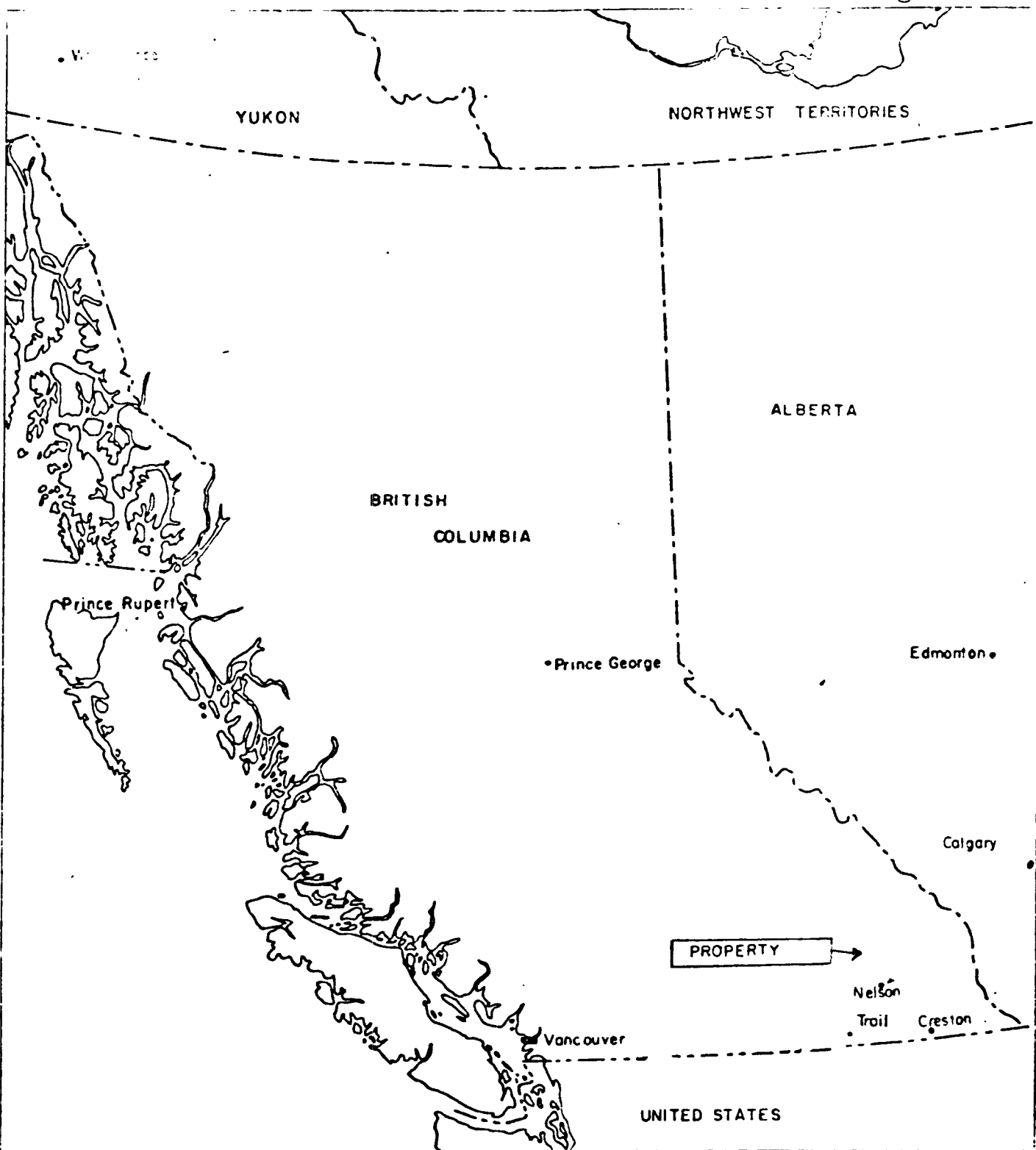
REPORT BY  
PEARSON GALLAGHER LTD.

SEPTEMBER 20, 1981

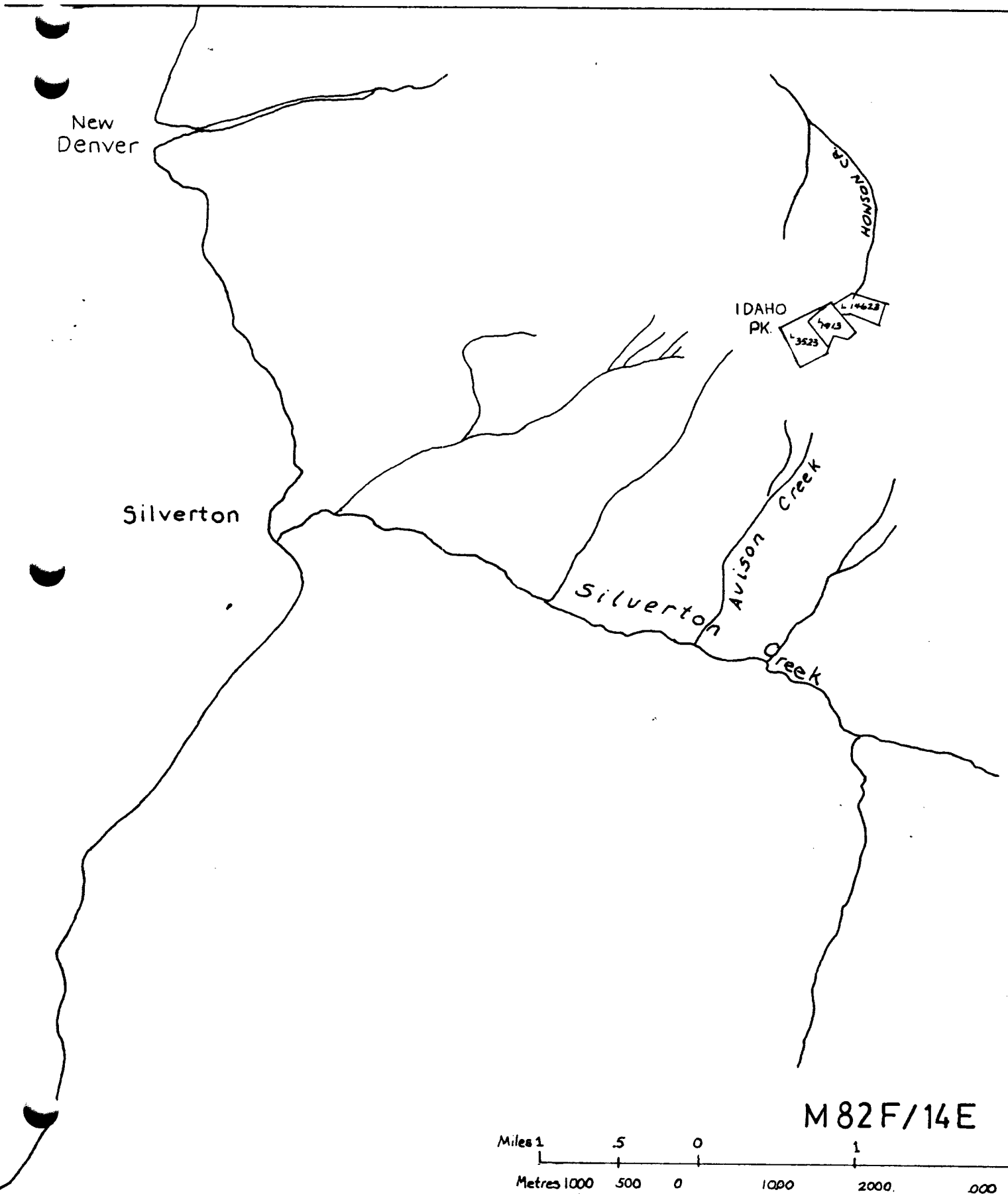
by Susan Zander.

TABLE OF CONTENTS

LOCATION MAP .....Page 1  
INDEX MAP .....Page 2  
LOCATION AND ACCESS .....Page 3  
PROPERTY INFORMATION .....Page 3  
GENERAL SETTING .....Page 4  
WORK SUMMARY .....Page 4  
INTERPRETATIONS AND RECOMMENDATIONS..Page 5  
ITEMIZED COST STATEMENT .....Page 6  
AUTHOR'S QUALIFICATIONS .....Page 7



PEARSON GALLAGHER LTD  
LOCATION MAP  
MINNESOTA GROUP  
SLOCAN MINING DIVISION  
BC



New  
Denver

Silverton

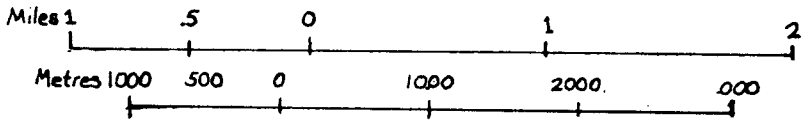
IDAHO  
PK.

HONSON  
CR.

AVISON  
CREEK

SILVERTON  
CREEK

M82F/14E



LOCATION AND ACCESS

The Minnesota Group of claims is located 6 miles east northeast of Silverton, B.C., at the head of Howson Creek in the Slocan Mining Division. Access to the claims is provided by a 2 wheel drive road from Sandon to the forestry lookout parking lot at Idaho Peak. The road intersects the claims as shown on the accompanying map.

PROPERTY INFORMATION

The following claims are included in the Minnesota group:

Minnesota	Rec #2322	Owner D.J. Gallagher
Mollie O	2322	D.J. Gallagher
Opantunka	2321	R.W. Pearson

The claims were crown granted in 1905. From this time until 1926, four tunnels were driven on the Minnesota claim. Prospect pits are found in various places up hill from the Minnesota adits. Since 1926, some exploration work has been done, mainly in the form of prospecting (assessment report 7076). In October of 1980, Daniel J. Gallagher and Robin W. Pearson acquired the claims.



CAVED ADIT MINNESOTA

GENERAL SETTING

The claims are situated in Wild Goose Basin at the head of Howson Creek, at elevations of 6200 to 6900 feet above sea level. The terrain is steep, rising up to the ridge top with open alpine meadows and some sparse forest cover.

Rock types are mainly sedimentary; limestone and argillite being the most common rocks found on the claims.



Wild Goose Basin

WORK SUMMARY

On August 26, 1981, I flew from Nelson by helicopter to prospect the Minnesota group of claims. I traversed the road and trail on the claims, examining outcrops and examined the Minnesota dumps and various prospect pits. At the top of the ridge, I discovered a 5 foot wide calcite vein with small amounts of galena. In a straight line down hill from this point to the Minnesota adits, I found calcite galena float. Along this line, I also found a contact of sedimentary and intrusive rock. Copper staining was

visible on some portions of the rock, and threads of mineralization believed to be antimony were observed. The enclosed map shows traverse and rock types encountered at several sites. At the upper Minnesota dump, disseminated pyrites were observed in the rock. In the lower dump, galena was found associated with calcite.

#### INTERPRETATIONS AND RECOMMENDATIONS

I believe that the property warrants further exploration with a geochemical soil sampling programme, and possibly a VLF electromagnetic survey to find out if the calcite vein 1) does continue from the ridge to the Minnesota workings and 2) carries mineral values. I also recommend detailed geological mapping of the property.

ITEMIZED COST STATEMENT

1 day (August 26/81), 1 prospector	
@ \$200.00/day .....	\$ 200.00
Helicopter Fee - 40 minutes .....	360.00
Office work, 1 day (September 29/81) .....	50.00
	<u>\$ 610.00</u>

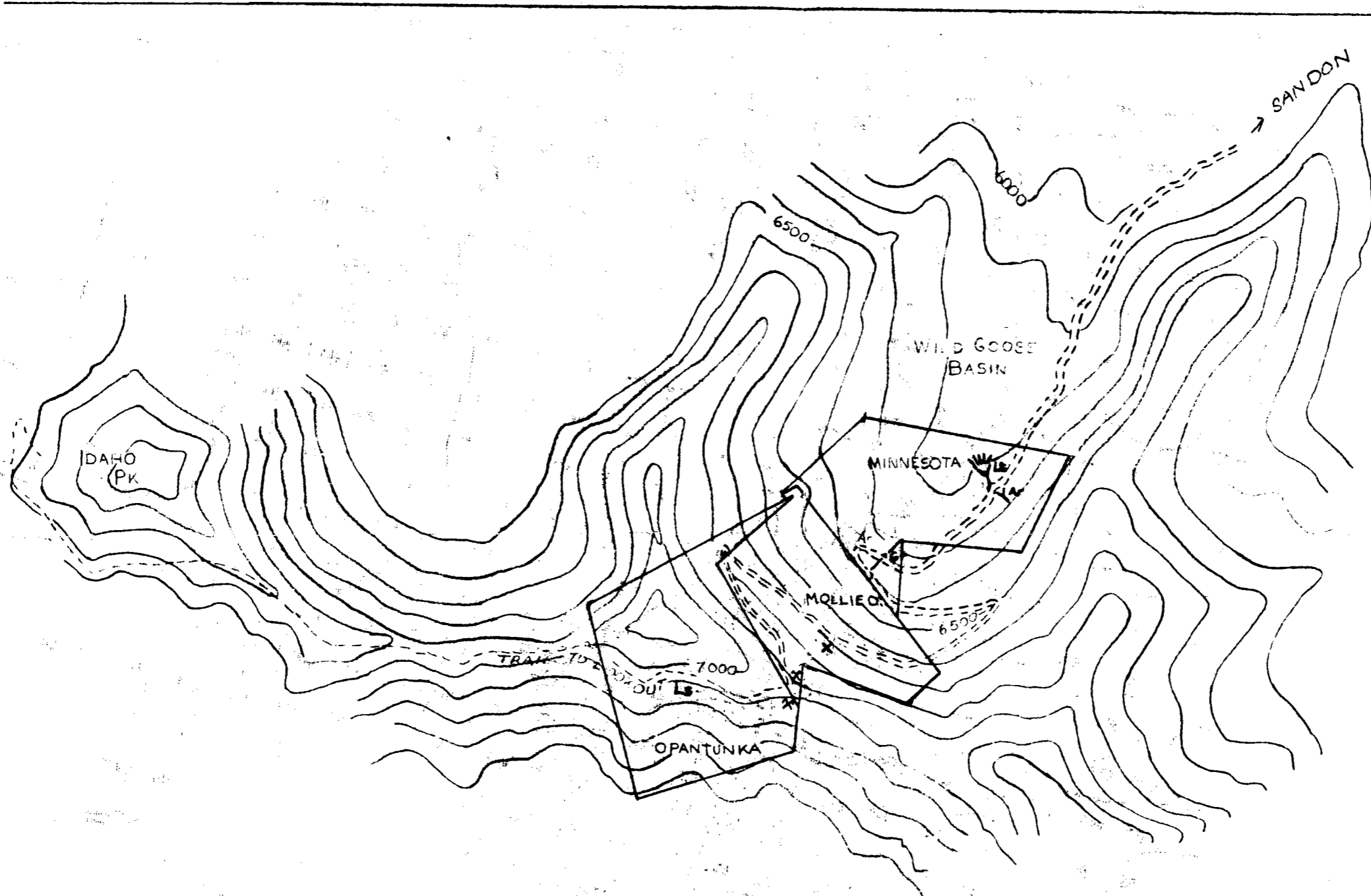


AUTHOR'S QUALIFICATIONS

I, Susan Zander, have completed the "Mineral Exploration for Prospectors" course offered by the Ministry of Energy, Mines and Petroleum Resources in May of 1981. I have worked in mineral exploration from 1979 to 1981, and have completed and passed the Rocks and Minerals course given by George Addie, District Geologist for the Ministry of Energy, Mines and Petroleum Resources in Nelson, B.C.

Signed:

S. Zander  
Susan Zander



LEGEND	
Ar	argillite
Ls	limestone
Gr	granite
Y	adit
---	geological contact
/  \	rock dump
x	prospect pit
x	mineralized float
---	trail
---	road
~	elevation (ft)
~	contour
□	claim boundary (approx.)

PEARSON GALLAGHER LTD  
 MINNESOTA GROUP  
 prospecting map

scale: 0 96 192 288 384 480 metres

date: sept 30, 1981

9477