

81-#710
-9528

(Assessment)

GEOLOGICAL-GEOPHYSICAL REPORT

CAT CLAIMS

GREENWOOD MINING DIVISION

British Columbia

118° 50'W Longitude; 49° 25'N Latitude

Owner: Dromoland Development Corp.

Operator: Mr. Peter DenHartog

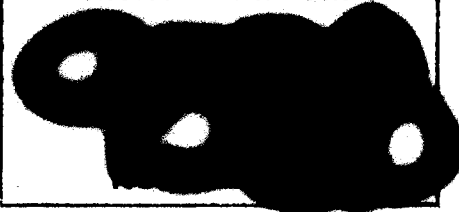
Consultant: E. Percy Sheppard, P.Eng.

Author: E. Percy Sheppard, P.Eng.

Date: September 14, 1981

N.T.S. 82E/7 W

MINERAL RESOURCES BRANCH
ASSESSMENT REPORT



9528

Cat Claims

Table of Contents

	<u>Page</u>
INTRODUCTION	1
Current Owner	
Operator	
History	
Geology	
WORK DONE	2
CONCLUSIONS	2
CERTIFICATE	3
<u>APPENDIX</u>	
Assessment work costs	
"CAT" Claims	
<u>MAPS</u>	
Index Map	
Area of Geochemical Survey (Fourth of July Claim)	Fig. 1A
Geochemical Survey Results	Fig. 1
	Scale: 1"= 100'

GEOLOGICAL-GEOPHYSICAL REPORT

CAT CLAIMS

Kettle River, Greenwood M.D.

INTRODUCTION

The CAT group of claims is located 32 km north-east along the Kettle River road from Westbridge, B. C..

Access to the property is by Highway 3 to Rock Creek then 12 km to Westbridge. The claims are 3 km west of the Kettle River road.

The area is fairly rough with elevations ranging from 1219 metres at the river to 1500 west of the claims.

Current Owner: Dromoland Development Corp.

Operator: Peter DenHartog

History: Mining activity in the area reached its peak during the early part of the present century with the Phoenix and Deadwood properties. These mines supplied ore to the smelters at Grand Forks, Greenwood and Boundary Falls. Since 1957 much activity has taken place in the form of prospecting, claim staking and investigation of old properties.

Mines at Beaverdell, 12 km west of the CAT group, are still in operation, producing silver at 150 tons per day, and a second old mine is being reopened. The CAT claims have no history of production.

Geology: The oldest rocks in the area are the Monashee group consisting of layered gneiss, minor schist, amphibolite, quartzite, marble and pegmatite. This rock type is intruded by Valhalla granite consisting of porphyritic granite. On the south of this intrusive lies the Anarchist group consisting of greenstone, greywacke, limestone and paragneiss. In places the Anarchist limestone was metamorphosed to skarn, forming large irregular replacement bodies containing chalcopryrite, pyrite and magnetite. The areas along the Kettle River and around Beaverdell are composed of the above rocks. The Beaverdell Mine is located near the Nelson batholithic rocks.

WORK DONE

A geochemical survey was carried out over an area 400' N-S, 450' E-W, near the center of the Fourth of July claim, in the Cat group of claims.

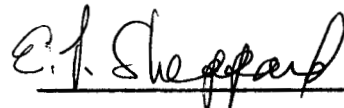
Five E-W lines were laid out spaced at 100' intervals, 400' in length. (Fig. 1A) Most of the readings were taken at 100' separations; a few at 50'.

Results are plotted on Fig. 1 in ppm; silver values on the north side, gold on the south.

Gold values were low, 0.02 and 0.03; silver ranged from 0.4 to 1.5 ppm. The anomalous 1.5 ppm reading lies 50' north of the base line on Line 1N.

CONCLUSIONS

The geochemical survey conducted over a small portion of the Fourth of July claim showed only background gold and silver values, except for one 1.5 ppm silver reading. However, a considerable area of the claims group remains to be prospected.



E. Percy Sheppard, P.Eng.
Consulting Geologist

September 14, 1981



C E R T I F I C A T E

I, E. PERCY SHEPPARD, of the City of Vancouver, in the Province of British Columbia, hereby certify

THAT:

I am a Consulting Geologist, at 1606-M, 1600 Beach Avenue, Vancouver, B.C., V6G 1Y7;

I am a graduate of Dalhousie University, with a B.Sc. in Geology, and have been active in mining exploration and geophysics for over forty years;

The data for the accompanying report were obtained from the operator of the geochemical survey on the Fourth of July claim and interpreted by the writer from the field notes and assay results.

A Geological Report on this property was submitted by the writer on February 17, 1981;

I have no direct or indirect interest in the property covered by this report, nor in the securities of Dromoland Development Corp., and do not expect to receive any such interest as a result of writing this report;

I am a member of the Professional Engineers Association of British Columbia, the American Institute of Mining Engineers, and a Fellow in the Geological Association of Canada.

DATED AT VANCOUVER, B.C., this 14th day of September 1981.

E. P. Sheppard

E. Percy Sheppard, P.Eng.

E. P. Sheppard

ASSESSMENT WORK COSTS - as filed by
George O'Brien, Pres., Dromoland Development
Corp.:-

Field work, transportation,
supplies, etc.\$350.00
Assays 200.00
Maps, copies etc. 150.00
Professional Services,
reports 800.00
\$1500.00

"CAT" CLAIMS:

		<u>Record No.</u>
Fourth of July	#L2638	
Muldoon	#L2639	
Montana	#L2640	1201
Colorado	#L2641	1202
Idaho	#2642	1203
Assayer	#991	1204
Cat		2354

- - -



INDEX

**DROMOLAND DEVELOPMENT CORP.
 CAT CLAIMS
 GREENWOOD MINING DIVISION B.C**

Albert E. Ashcroft

Surveyor

, a duly authorised

Surveyor for the Province of British Columbia, make follows:—

Surveyed *The Fourth of July* Claim

Completed the said survey on the *24th* day

of *April*, 1902, and completed it on the

2nd day of *April*, 1902

and personally ran all the lines of the said survey on the dates specified in the field-book and marked A.

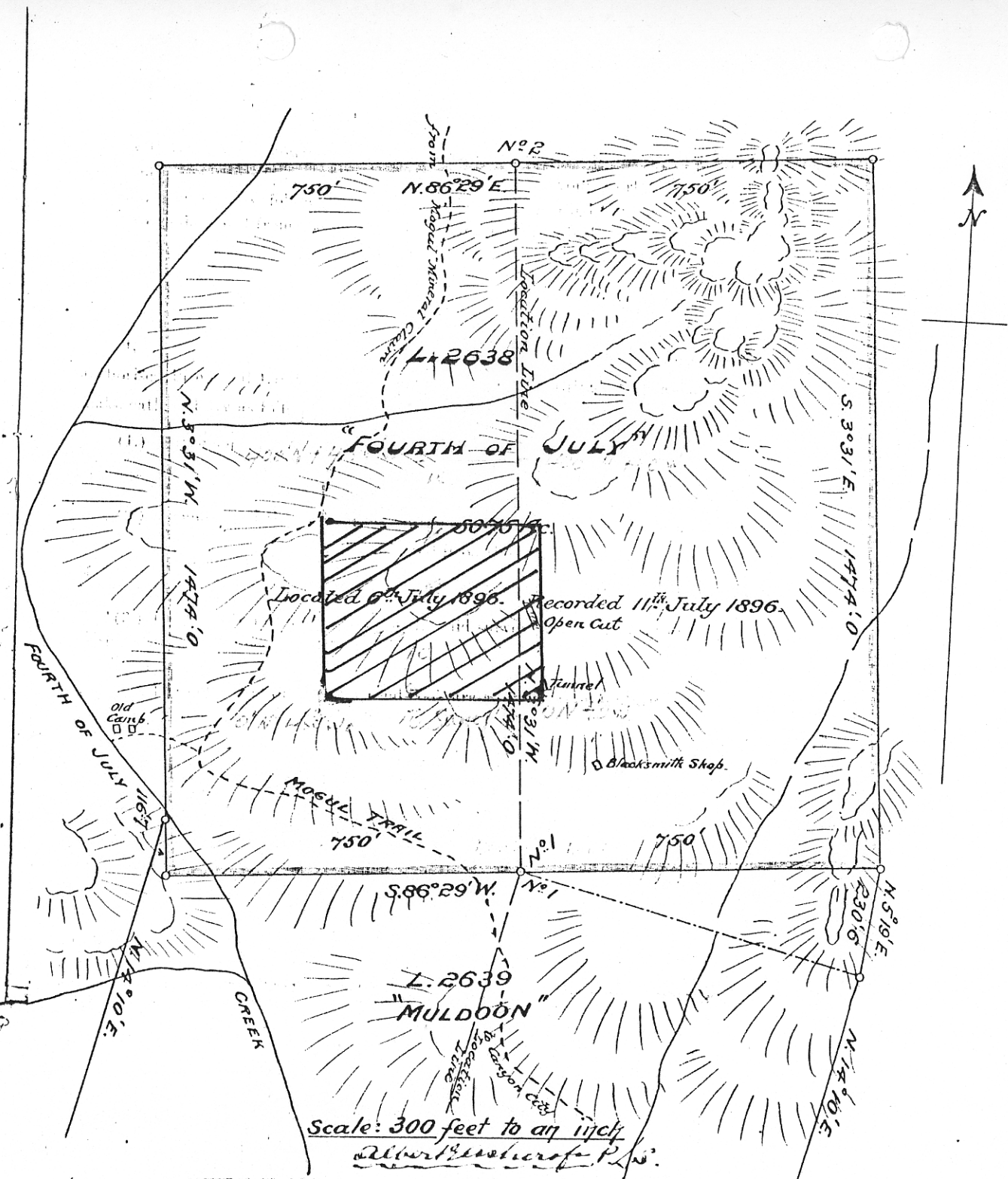
The lines shown on this plan are a correct representation of the lines as shown on the ground by me.

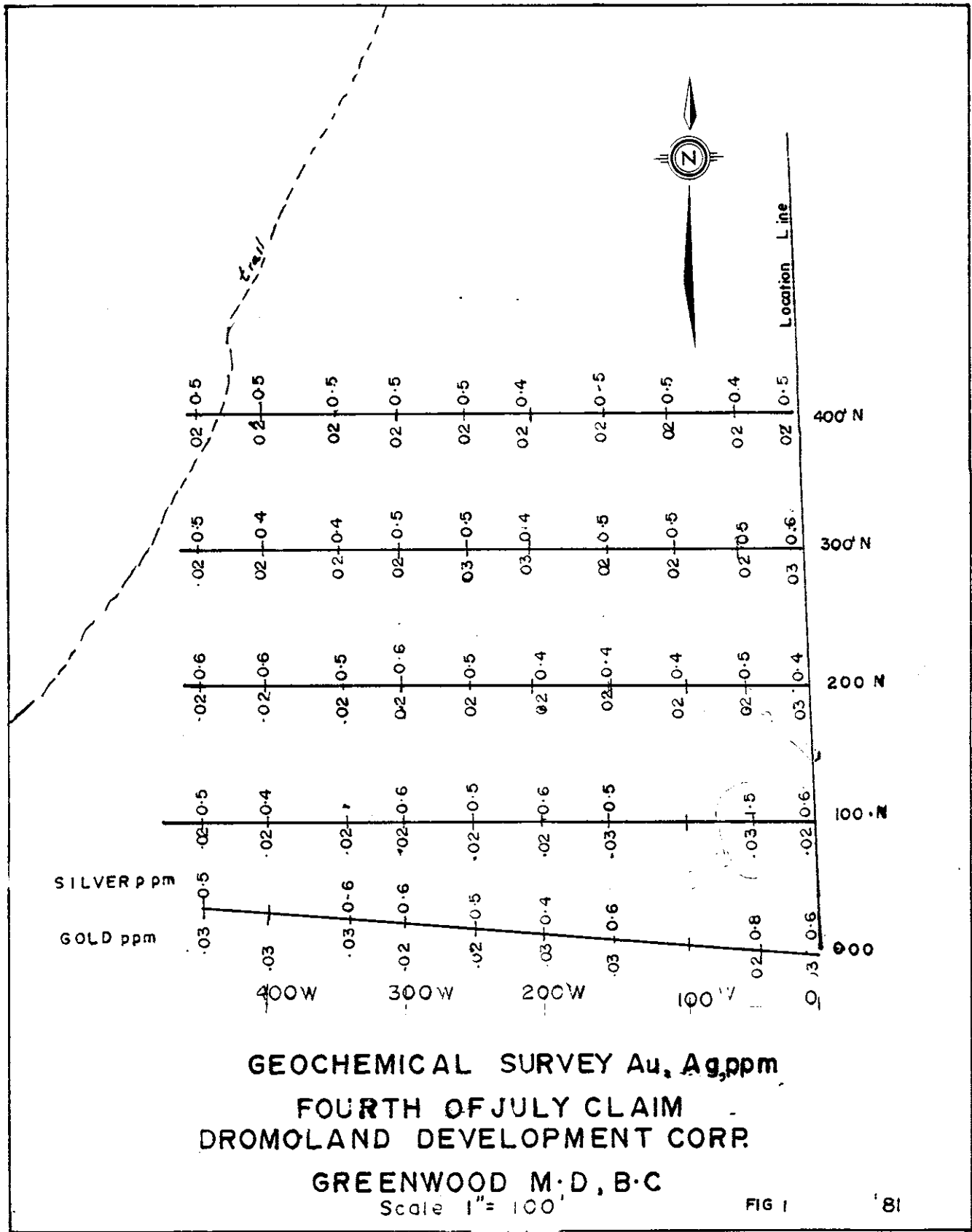
Albert E. Ashcroft

Provincial Land Surveyor

DROMOLAND DEV. CORP.
SHOWING AREA OF
GEOCHEMICAL SURVEY

FIG 1A





GEOCHEMICAL SURVEY Au, Ag, ppm
 FOURTH OF JULY CLAIM
 DROMOLAND DEVELOPMENT CORP.
 GREENWOOD M.D., B.C.

Scale 1" = 100'

FIG 1

'81

24 M.