

1980 - 1981 DIAMOND DRILLING PROGRAM
SAB 3 and SAB 5
MINERAL CLAIMS
VERNON MINING DIVISION
N.T.S. 82E/15E

49°55' N. Latitude and 118°42' W Longitude

OWNER OF CLAIMS: R.W. Yorke-Hardy

OPERATOR OF PROGRAM: Mohawk Oil Co. Ltd.

PREPARED BY: M.W. Waldner

August 19, 1981

Part 1
of 2

MINERAL RESOURCES BRANCH ASSESSMENT REPORT 9576 NO. _____
--

TABLE OF CONTENTS

INTRODUCTION	Page 1
GEOGRAPHY & PHYSIOGRAPHY	Page 1
LOCATION & ACCESS	Page 1
HISTORY & GENERAL PROPERTY DESCRIPTION	Page 2
SUMMARY OF WORK	Page 3-4
INTERPRETATION OF RESULTS	Page 4-5
CONCLUSIONS	Page 5-6
ITEMIZED STATEMENT OF COSTS	Page 6-7
AUTHOR'S QUALIFICATIONS	Page 8
STATEMENT OF QUALIFICATIONS	Page 9
 <u>MAPS & ILLUSTRATIONS</u>	
LOCATION MAP	Fig. #1
CLAIMS MAP	Fig. #2
SCHEMATIC PLAN - MINERAL & ALTERATION ZONING	Dwg. #1
THEORETICAL, VERTICAL MINERAL & ALTERATION ZONING	Dwg. #2
DRILL HOLE PLAN	Dwg. #3
DRILL CORE LOGS - HOLE SAB-80-1 TO SAB-80-25	Pocket

INTRODUCTION

This report discusses the results of a diamond drilling program, logging of core and interpretation of the geological data collected from drill core. A total of 3114 metres (10,218 feet) of NQ drilling in 25 holes were completed between June 1, 1980 and October 26, 1980. The core was logged during the first 5 months of 1981. The purpose of the drilling program was to explore the economic potential of the property.

GEOGRAPHY AND PHYSIOGRAPHY

The property is located on the extreme eastern boundary of the Okanagan Highland, a division of the Interior Plateau System. The terrain of the property is moderate. The elevation varies from 1000 metres A.S.L. on the flat benches along the Kettle River to steep rock slopes and bluffs 1300 metres A.S.L. on the western side of the claims.

The property is drained by numerous small creeks running easterly into the Kettle River. The two main drainages are Stove and Haggart Creeks.

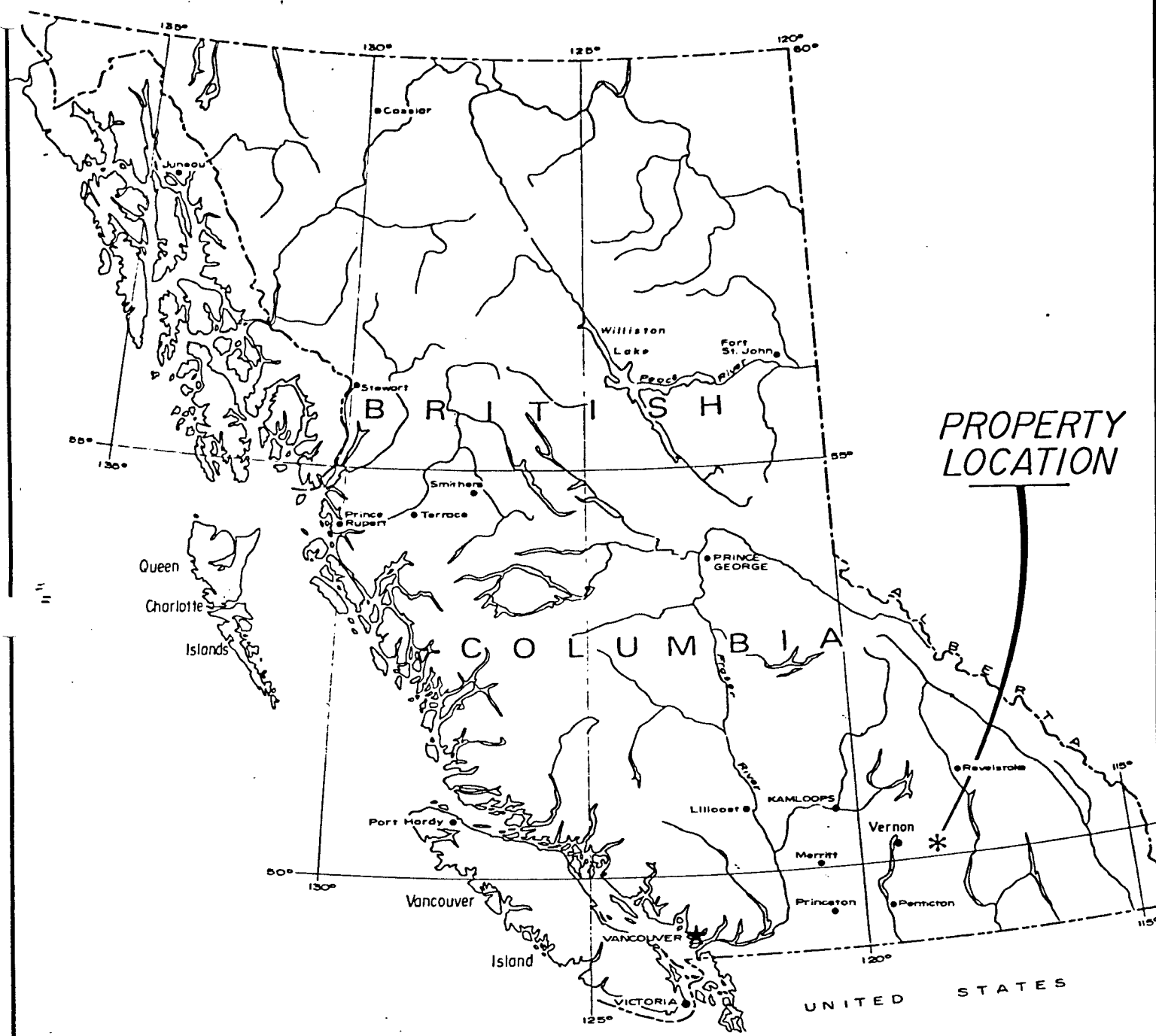
The vegetation consists of Lodgepole Pine, Spruce and Fir. However, much of the property has been logged off.

LOCATION AND ACCESS

The SAB claims are located on the western side of the East Kettle River, 70 kilometres southeast of Lumby, B.C. by road, and 24 kilometres S 35° W of the Monashee Pass.

Access to the property is via gravel logging road 18 kilometres from Spruce Grove on Highway 6. Spruce Grove is 79 kilometres southeast of Vernon on Highway 6.

Figure 1



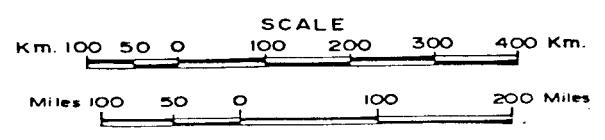
MOHAWK OIL Co. LTD.

SAB CLAIM GROUP

VERNON M.D., B.C.

LOCATION MAP

Date: Aug. 1981



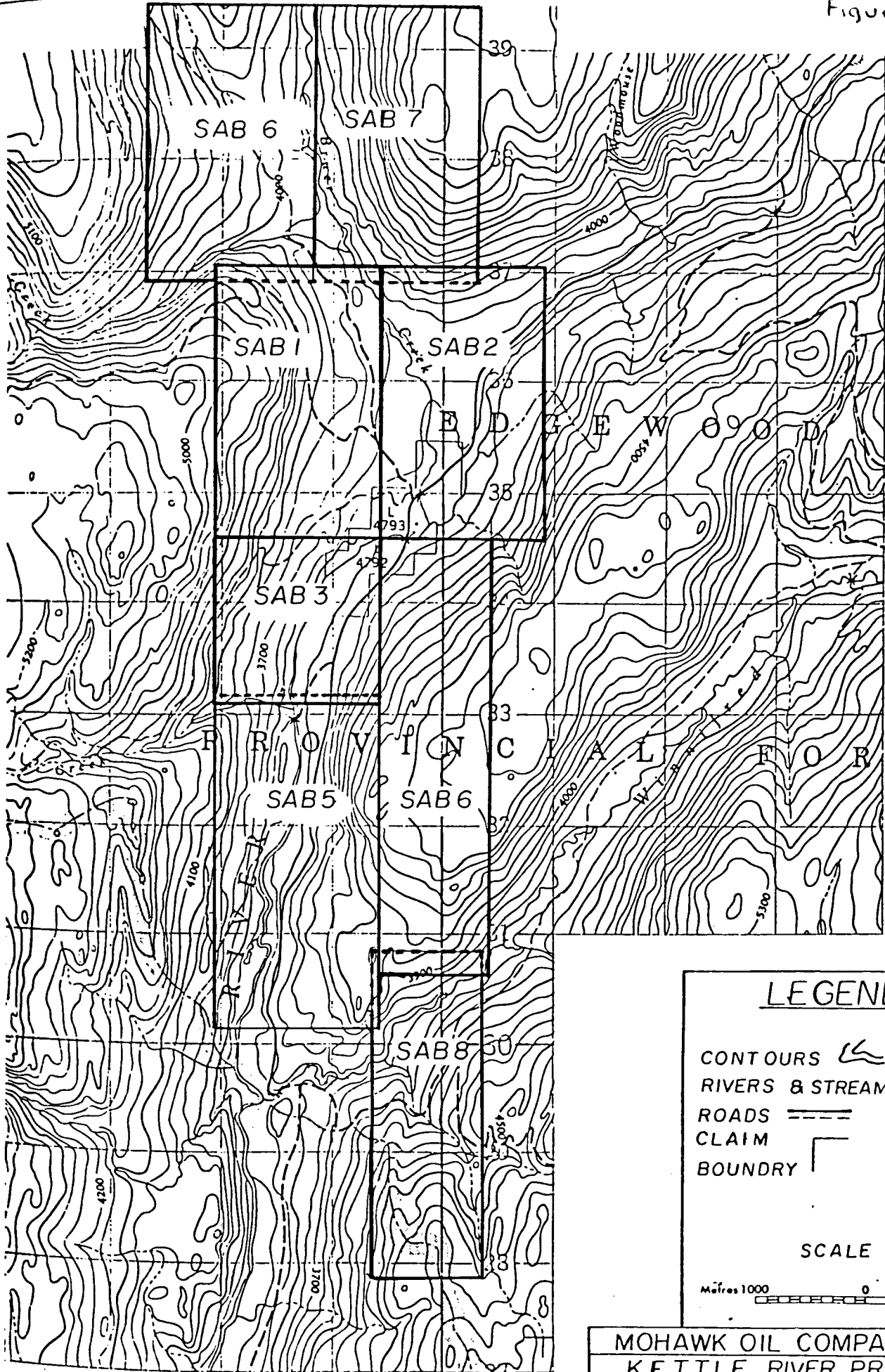
HISTORY AND GENERAL PROPERTY DESCRIPTION

The property was originally staked in June of 1972 by S.E. Arnold on the basis of mineralization exposed in a road cut. Trenching and geological prospecting has resulted in discovery of additional exposures of pyrite, galena and sphalerite carrying significant precious metals values. Geological, Geochemical, and Geophysical surveys were completed through 1978. Percussion drilling totalling 350 metres, trenching and test pitting were conducted during 1978. An I.P. survey was conducted during 1979.

The SAB mineral claims are currently held by R.W. Yorke-Hardy and S.E. Arnold and currently under option to Mohawk Oil Co. Ltd. Details of the claims are as follows:

<u>CLAIM NAME</u>	<u>NO. OF UNITS</u>	<u>RECORD NO.</u>	<u>DATE</u>
SAB 1	15	619	2/25/79
SAB 2	15	620	5/25/79
SAB 3	9	621	5/25/79
SAB 4	16	622	5/25/79
SAB 5	18	623	5/25/79
SAB 6	15	1006	3/06/81
SAB 7	15	1007	3/06/81
SAB 8	12	1008	3/06/81

Figure 2



LEGEND

CONTOURS

RIVERS & STREAMS

ROADS

CLAIM

BOUNDARY

SCALE

Mètres 1000 0 1000

MOHAWK OIL COMPANY LTD.
 KETTLE RIVER PROJECT

SAB CLAIMS

DRAWN BY SM SCALE 1:50,000 DATE JUNE 25/81

SUMMARY OF WORK

A total of 3114 metres (10,218 feet) of NQ diamond drilling was completed in 25 holes during June, July, August, September and October of 1980. The core was logged during February, March, April and May of 1981. The holes drilled were as follows:

<u>DRILL HOLE NO.</u>	<u>INCLINATION</u>	<u>DEPTH</u>
SAB-80-1	-60°	163 m (535')
-2	-45°	196 m (645')
-3	-60°	214 m (705')
-4	-45°	251 m (825')
-5	-70°	239 m (785')
-6	-60°	224 m (735')
-7	-60°	194 m (635')
-8	-45°	174 m (570')
-9	-60°	87 m (285')
-10	90°	105 m (345')
-11	-70°	87 m (285')
-12	-60°	84 m (275')
-13	-60°	86 m (281')
-14	-80°	38 m (125')
-15	-80°	38 m (125')
-16	-60°	50 m (164')
-17	-60°	47 m (155')
-18	-45°	61 m (200')
-19	-60°	62 m (203')
-20	-80°	61 m (200')
-21	90°	110 m (360')
-22	-45°	175 m (575')
-23	90°	218 m (715')
-24	-45°	72 m (235')
-25	-70°	78 m (255')
		<hr/>
TOTAL:		3,114 m (10,218')

A total of approximately 1,390 metres (4,560 feet) was drilled on SAB 3 and 1,725 metres (5,658 feet) on SAB 5.

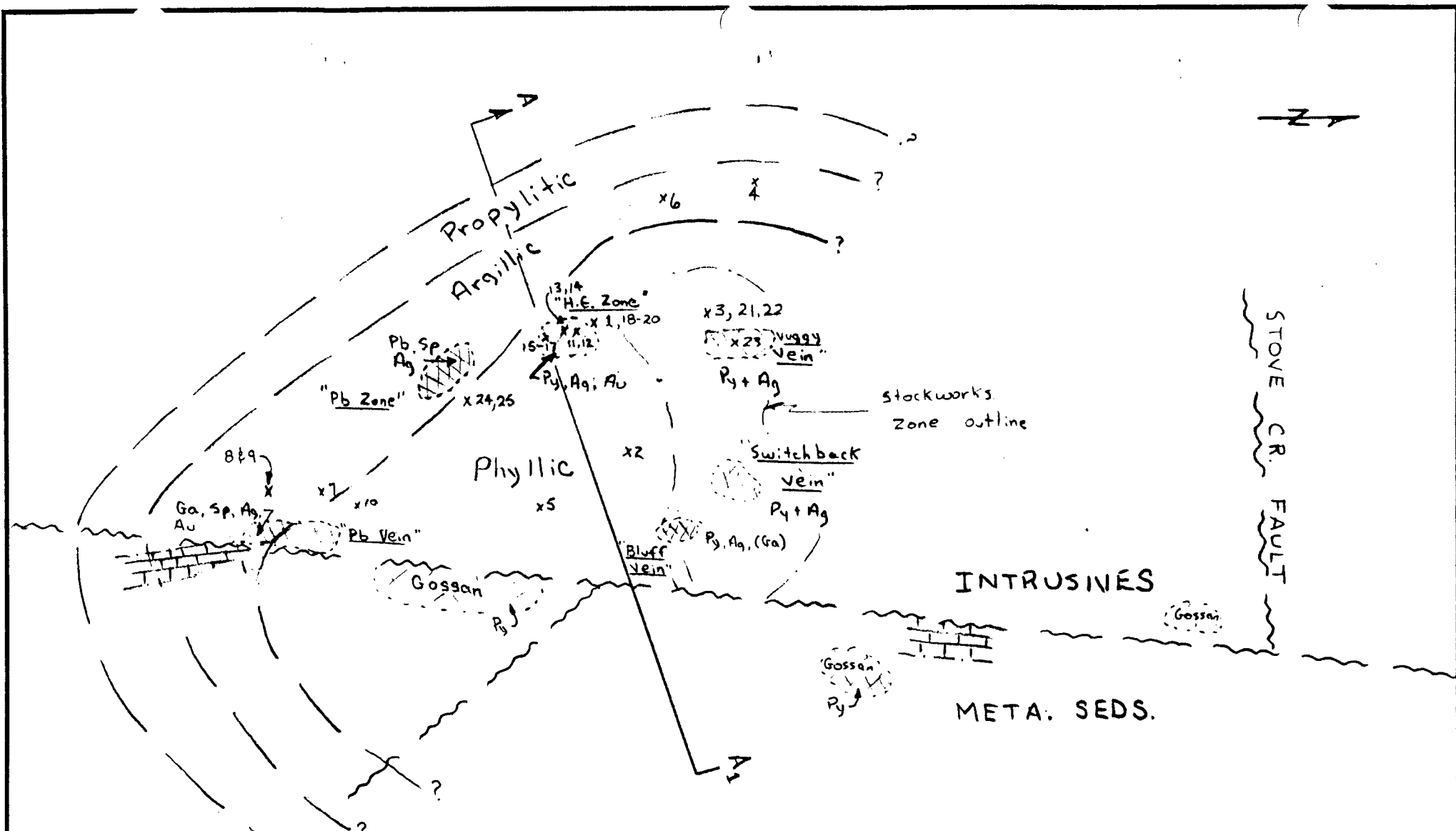
The core was logged by M. Waldner and B. Callaghan under the supervision of M. Waldner. The detailed graphic logs are appended. Core is stored in Core Shack at Kettle Camp.

INTERPRETATION OF RESULTS

Mineralization is apparently centered at the intersection of a northeasterly trending fault and a northwesterly trending cross fault. The topographic expressions of these features is a topographic low and a severe bend in the Kettle river, respectively. Geophysics also confirms the existence of the northeasterly trending structure.

The mineralization and hydrothermal alteration exposed in outcrop and intersected in drill holes suggests the existence of a concentrically zoned "Andean Type" porphyry system. This is illustrated in the appended Schematic Plan (Drawing #1) and the Theoretic, Vertical Zoning Pattern (Drawing #2).

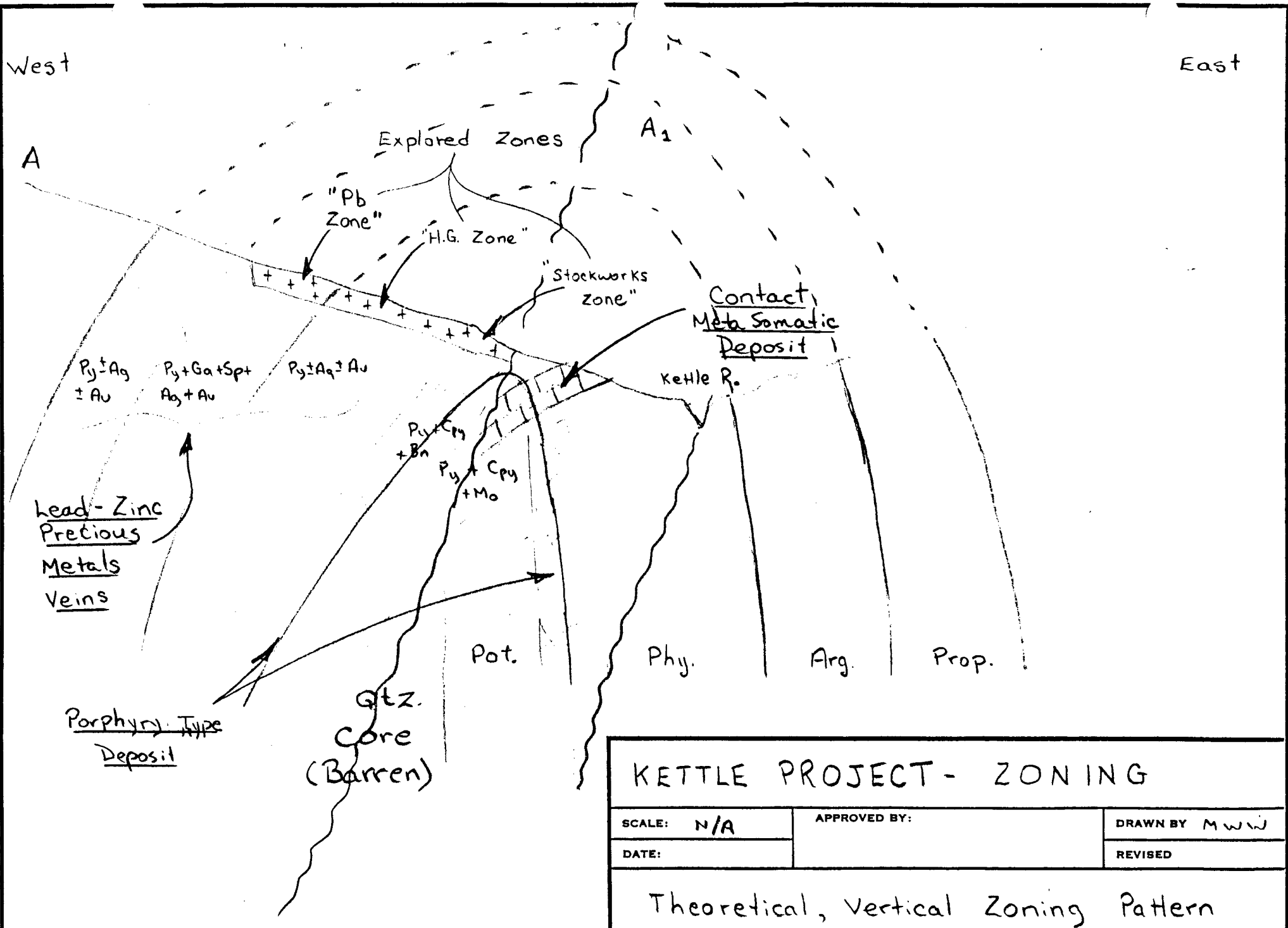
Diamond drilling information and surface exposures suggest peripheral, propylitic type hydrothermal alteration exists to the west and south of the mineralized zones and has associated with it, low grade pyrite mineralization. Interior to this zone, an Argillic alteration zone exists with associated pyrite, galena, sphalerite, silver and gold values. This mineralization occurs generally with quartz as veins and minor disseminations. Mineralization in the "Lead Zone" and the "Lead Vein" are typical of this zone. An interior zone of Phyllic alteration occurs with associated pyrite, gold, silver, and minor chalcopyrite values present. Mineralization in the "High Grade Zone" and the



LEGEND

- | | | | | | |
|----|---------------------|--------------------------------|------------|------|--------------|
| x7 | Diamond Drill Hole | Ag | Silver | Cpy | Chalcopyrite |
| | Mineralized outcrop | Au | Gold | Bn | Bornite |
| | Limestone outcrop | Ga | Galena | Cu | Copper |
| | Fault | Mo | Molybdenum | | |
| Sp | Sphalerite | <u>Hydrothermal Alteration</u> | | | |
| Py | Pyrite | Propy. | Propylitic | Phy. | Phyllic |
| | | Arg. | Argillic | Pot | Potassic |

<h2>KETTLE PROJECT - ZONING</h2>		
SCALE: N/A	APPROVED BY:	DRAWN BY M.W.W
DATE: 6/9/81		REVISED
<h3>Schematic Plan - Interpretation</h3>		
Mineral & Alteration Zoning		DRAWING NUMBER 1



KETTLE PROJECT - ZONING

SCALE: N/A	APPROVED BY:	DRAWN BY M.W.W
DATE:		REVISED

Theoretical, Vertical Zoning Pattern

Mineral & Alteration Zoning	DRAWING NUMBER 2
-----------------------------	---------------------

"Stockworks Zone" typifies this mineralization.

The 1980 drilling program partially tested the vein type pyrite, galena, sphalerite, precious metals mineralization typical of their peripheral and higher levels of the hydrothermal system. As illustrated in drawing #2, exploration at depth, and in the limestone environments could result in discovery of a "porphyry" type ore deposit or a high grade "contact metasomatic" type deposit. Therefore, it appears that the 1980 drilling was generally confined to the peripheral zones where the "Lead-Zinc Precious Metals" vein type deposits may occur. Drilling for the other two possible deposit types has not been done.

It should be noted that the hydrothermal alteration and mineral zoning depicted in drawings #1 and 2 are approximate. The zoning boundaries are indistinct and tend to overlap. Therefore, there would be a gradual transition in mineralization, sulphide content and alteration type and intensity as one progresses from the fringe of the system towards the theoretical barren quartz core.

It is also note-worthy that the "dissoriented stockworks" type mineralization occurs near the upper curvature of the theoretical zonal pattern. This would be likely if the pressure of the migrating hydrothermal fluids resulted in a domal type fracturing and/or brecciation of the host rock.

CONCLUSIONS

1. There is strong evidence that the Kettle River property has potential for three types of ore deposits:
 - (i) A high grade vein type lead-zinc precious metals deposit.
 - (ii) A "Porphyry" type deposit.

- (iii) A contact metasomatic deposit.
2. Diamond drilling conducted during 1980 partially tested the peripheral and higher level zones where one might expect to find lead, zinc and precious metal type mineralization. Trenching, mining, geological mapping and geochemical surveys should assist in defining drilling targets and testing the peripheral mineralization intended to be used as ore feed for the portable mill.
 3. The most probable conduit for hydrothermal (ore bearing) fluids, is the northeast trending fault which cuts through the property. The fault also appears to be the contact between the intrusives in the west and the metamorphosed sedimentary rocks to the east.
 4. If the northeast trending fault is the conduit for hydrothermal fluids, then the mineralization and alteration should be concentrically zoned about the fault.
 5. The I.P. survey results suggest that a porphyry type disseminated or stockwork type mineralization may be prevalent in the area described as the "stockworks zone". The weaker discontinuous I.P. responses in the southern zone, indicates that "vein type" mineralization may be most common. This interpretation is supported by surface geology and diamond drilling.

ITEMIZED STATEMENT OF COSTS

M. Waldner (Chief Geologist) -	Supervision, core logging and Report Preparation 15 days at \$210/day (Feb. 23-Aug. 17/80)	\$3,150.00
B. Callaghan (Geologist)	Core logging, 50 days at \$100 /day (March 3-May 27/81)	5,000.00
Charges from Maitland Explorations Ltd. (June 1 to Oct. 26/80):		
1. Petroleum Products -	\$ 8,501.36	

2. Consumable Materials -	\$21,044.19	
3. Diamonds	21,296.17	
4. Wages	72,344.90	
5. Vehicles	3,580.20	= \$126,766.82
Road Building & Site preparation; Drill Moving (D6 Bulldozer)		7,429.57
Supplies		17,344.32
Materials		4,687.56
Transportation & Freight		4,522.30
Fuel & Lubricants (Vehicles & Camp)		6,110.78
Parts & Repairs		6,226.98
Miscellaneous Equipment		10,403.00
Additional Exploration & Drilling Equipment (Core Boxes, etc.)		44,431.57
Board & Room		9,440.00
Photo copying, secretarial, etc.		<u>100.00</u>
		\$245,612.90
 <u>AMOUNT APPLIED</u>		
(SAB 3 M.C.) SAB North Mineral Claim Group		64,800.00
P.A.C. Account		<u>7,800.00</u>
		\$72,600.00
(SAB 5 M.C.) SAB South Mineral Claim Group		57,600.00
P.A.C. Account		<u>91,900.00</u>
		\$149,500.00
Total Amount Applied (Including P.A.C. Accounts):		\$222,100.00

AUTHOR'S QUALIFICATIONS

MATTHEW WILLIAM WALDNER

I Graduated from the University of British Columbia in 1969 with a Bachelor of Science degree in Geology. Since graduating, I have continuously practiced my profession in various levels of responsibility in industry. The following is a synopsis of my employment experience:

- 1969 7 months as junior geologist and party chief in southern B.C. and Yukon Territory - Atlas Explorations Ltd. (N.P.L.)
- 1970-1973 3½ years as open pit geologist at Endako Mines Ltd. - Placer Development Ltd.
- 1973-1979 6 1/3 years as pit geologist, Mine Geologist and Chief Mine Geologist at Lornex in the Highland Valley of B.C. - Lornex Mining Corporation Ltd.
- 1979 4 months as Projects and Reclamation Engineer - Lornex Mining Corporation Ltd.
- 1979-1981 13 months as Chief Mine Engineer, in charge of the Mine Engineer Department - Lornex Mining Corporation Ltd.
- 1981 (JAN)-Chief Geologist - Mohawk Oil Co. Ltd., Mining Present Division, Vernon, B.C.

Dated: August 19, 1981

Signed:



M.W. Waldner

Chief Geologist

STATEMENT OF QUALIFICATIONS

BRIAN CALLAGHAN

- 1980 Graduated from Brandon University, Manitoba
with BS Science Degree in Geology.
- 1980 June - Oct. Esso Minerals, Canada Geological
assistant in exploration in Northern Manitoba,
and Northern Saskatchewan Exploration and
core logging on Grande Duc Mine.
- 1981 February 23/81 to present. Exploration Geo-
logist, Mohawk Oil Co. Ltd. Responsibilities
included core logging, supervision of field
crews -- geological and geochem prospecting.



KAMLOOPS RESEARCH & ASSAY LABORATORY LTD.

2095 WEST TRANS CANADA HIGHWAY — KAMLOOPS B.C.

V1S 1A7

PHONE: (604) 372-2784 — TELEX: 048-8320

CERTIFICATE OF ASSAY

B.C. LICENSED ASSAYERS
GEOCHEMICAL ANALYSTS
METALLURGISTS

TO Mohawk Oil Company Ltd.
203 - 3401 33rd St.
Vernon, B.C.

Certificate No. K-3352
Date November 6, 1980

I hereby certify that the following are the results of assays made by us upon the herein described _____ samples

Kral No	Marked	GOLD Ounces Per Ton	SILVER Ounces Per Ton	Cu Percent	Pb Percent	Zn Percent	W Percent			
1	HOUZ 80 - 1	1 65.5-75.4	TR	.37			.43			
2		2 77-80	TR	.03			.10			
3		3 84.2-90.2	TR	.06	L.01		.06			
4		6 99-101.3	TR	.02			.03			
5		7 179.3-185.4	.001	.03	L.01		.03			
6		8 190-196.2	.001	.05	L.01		.03			
7		9 196.2-199.2	.001	.02	L.01		.03			
8		10 220.6-224.8	TR	.02			.03			
9		11 224.8-227.3	TR	.04			.03			
10		13 232.0-236.7	.001	.02			.02			
11		14 236.7-240.8	.001	.02			.02			
12		15 242.5-248.3	.001	.02			.02			
13		16 298.3-302.3	.003	.04			.02			
14		17 307.3-307	.001	.04			.02			
15		18 330-333.7	.009	.04			.02			
16		19 333.7-341	.001	.02			.02			
17		20 341-344	.001	.08			.02			
18		21 382.2-384.8	.206	TR			.03			
19		22 391.7-399.5	.001	TR			.02			
20		23 404-408	.001	.02			.02			

NOTE: As requested, the tungsten values were run by X-ray as geochem tungsten. They are not assays.

NOTE:
Rejects retained three weeks.
Pulps retained three months
unless otherwise arranged.

Registered Assayer, Province of British Columbia



KAMLOOPS RESEARCH & ASSAY LABORATORY LTD.

2095 WEST TRANS CANADA HIGHWAY — KAMLOOPS B.C.

V1S 1A7

PHONE: (604) 372-2784 — TELEX: 048-8320

CERTIFICATE OF ASSAY

B.C. LICENSED ASSAYERS
GEOCHEMICAL ANALYSTS
METALLURGISTS

TO Mohawk Oil Company Ltd.

Certificate No. K-3352
Date November 6, 1980

I hereby certify that the following are the results of assays made by us upon the herein described _____ samples

Kral No.	Marked	GOLD Ounces Per Ton	SILVER Ounces Per Ton	Cu Percent	Pb Percent	Zn Percent	W Percent	Cd		
21	MS 1	.497	.25	.02	.10	.08				
22	MS 2	.138	.16	.04	.34	.17				
23	ME 1	.003	.12	.01	.02	.11				
24	ME 2	.002	.14	.01	.05	.05				
25	ME 3	.091	.10	.01	.02	.31				
26	BH 1	.002	9.03	.20	1.71	4.33				
27	BH 2	.012	23.1	.28	13.8	6.1				
28	BH 3	.002	2.55	.40	.14	7.0				
29	BH 4	.008	12.4	.06	29.1	7.70				
30	BH 5	.006	.33	.02	.49	.32				
31	BH 6	.006	1.87	.18	.80	2.69				
32	80-1 Kettle Pb Zone	.008	38.4		.79	26.3				
33	80-2 Kettle Pb Zone	TR	.31		.47	.46	.03	.19		
34	80-2 Sample 231.4-232.4	.001	.06				.02			
35	80-2	.001	.04				.02			
36	2	.003	TR				.02			
37	3	TR	TR				.02			
38	4	.003	.03				.02			
39	5	.002	TR				.02			
40	6	TR	.02				.02			

NOTE: As Requested, The tungsten values were run by x-ray as geochem tungsten. They are not assays.

NOTE:
Rejects retained three weeks.
Pulps retained three months
unless otherwise arranged.

Registered Assayer, Province of British Columbia



KAMLOOPS RESEARCH & ASSAY LABORATORY LTD.

2095 WEST TRANS CANADA HIGHWAY — KAMLOOPS B.C.
VIS 1A7

PHONE: (604) 372-2784 — TELEX: 048-8320

CERTIFICATE OF ASSAY

B.C. LICENSED ASSAYERS
GEOCHEMICAL ANALYSTS
METALLURGISTS 3

TO Mohawk Oil Company Ltd.

Certificate No. K-3352

Date November 6, 1980

I hereby certify that the following are the results of assays made by us upon the herein described _____ samples

Kral No.	Marked		GOLD	SILVER	Cu	Pb	Zn	Cd	W		
			Ounces Per Ton	Ounces Per Ton	Percent	Percent	Percent	Percent	Percent	Percent	Percent
41	80 - 2	8	.001	.02					.02		
42		11	.001	.01					.02		
43		12	.002	TR					.02		
44		13	TR	TR					.02		
45		15	.001	.05					.03		
46	80 - 3	7	.001	.01					.03		
47		8	TR	.02					.03		
48		9	.001	TR					.03		
49		10	.001	.01					.02		
50		11	.001	.04					.02		
51		12	.001	.04					.02		
52		13	.001	.04					.03		
53		14	.001	TR					.03		
54		15	.001	TR					.02		
55		16	.002	.02					.03		
56		17	.001	TR					.03		
57		18	.001	TR					.03		
58		19	.002	.02					.03		
59		20	.032	.02					.02		
60		21	.001	TR					.03		

NOTE: As requested, the tungsten values were run by x-ray as geochem tungstens. They are not assays.

NOTE:
Rejects retained three weeks.
Pulps retained three months
unless otherwise arranged.

Registered Assayer, Province of British Columbia



KAMLOOPS RESEARCH & ASSAY LABORATORY LTD.

2095 WEST TRANS CANADA HIGHWAY — KAMLOOPS B.C.

VIS 1A7

PHONE: (604) 372-2784 — TELEX: 048-8320

CERTIFICATE OF ASSAY

B.C. LICENSED ASSAYERS
GEOCHEMICAL ANALYSTS
METALLURGISTS 4

TO Mohawk Oil Company Ltd.

Certificate No. K-3352

Date November 6, 1980

I hereby certify that the following are the results of assays made by us upon the herein described _____ samples

Kral No.	Marked		GOLD	SILVER	W						
			Ounces Per Ton	Ounces Per Ton	Percent	Percent	Percent	Percent	Percent	Percent	Percent
61	80 - 3	22	.001	.01	.02						
62		23	.001	.01	.03						
63		24	.001	.06	.02						
64		25	.001	.02	.02						
65		26	.001	TR	.02						
66		27	.001	.06	.02						
67		28	.001	.04	.03						
68		29	.001	.03	.02						
69		30	.001	.06	.02						
70		31	.001	.08	.02						
71		32	.001	.05	.01						
72		33	.001	.09	.03						
73		34	.001	.06	.02						
74		35	.001	.02	.02						
75		36	.001	.02	.02						
76		37	.002	.03	.01						
77		38	.001	.12	.02						
78		39	.001	.07	.03						
79		40	.001	.15	.02						
80		41	.001	.02	.02						

NOTE: As requested, the tungsten values were run by x-ray as geochem tungstens. They are not assays.

NOTE:
Rejects retained three weeks.
Pulps retained three months
unless otherwise arranged.

Registered Assayer, Province of British Columbia



CERTIFICATE OF ASSAY

TO Mohawk Oil Company Ltd.

Certificate No. K-3352

Date November 6, 1980

I hereby certify that the following are the results of assays made by us upon the herein described samples

Kral No.	Marked		GOLD	SILVER	W						
			Ounces Per Ton	Ounces Per Ton	Percent	Percent	Percent	Percent	Percent	Percent	Percent
81	80 - 3	42	.003	.17	.03						
82		43	.001	.02	.02						
83		44	.001	.08	.02						
84		45	.001	.11	.02						
85		46	.001	.03	.02						
86		47	.003	.24	.01						
87		48	.002	.01	.02						
88		49	.001	.07	.02						
89		50	.001	.03	.03						
90		51	.001	.03	.02						
91		52	.001	.09	.03						
92		53	.002	.05	.03						
93		54	.001	.02	.03						
94		55	.001	.05	.03						
95		56	.003	.03	.03						
96		57	.002	.02	.03						
97		58	.001	.04	.03						
98		59	.001	.08	.03						
99		60	.001	.04	.03						
100		61	TR	.03	.03						

NOTE: As requested, the tungsten values were run by x-ray as geochem tungsten. They are not assays.

NOTE: Rejects retained three weeks. Pulps retained three months unless otherwise arranged.

R. Brown
Registered Assayer, Province of British Columbia



KAMLOOPS RESEARCH & ASSAY LABORATORY LTD.

2095 WEST TRANS CANADA HIGHWAY — KAMLOOPS B.C.

V1S 1A7

PHONE: (604) 372-2784 — TELEX: 048-8320

CERTIFICATE OF ASSAY

TO Mohawk Oil Company Ltd.

Certificate No. K-3352

Date November 6, 1980

I hereby certify that the following are the results of assays made by us upon the herein described samples

Kral No.	Marked		GOLD	SILVER	W						
			Ounces Per Ton	Ounces Per Ton	Percent	Percent	Percent	Percent	Percent	Percent	Percent
101	80 - 3	62	TR	.08	.03						
102		63	TR	.04	.02						
103		64	.001	.04	.02						
104		65	TR	.08	.02						
105		66	.002	.21	.02						
106		67	.001	.07	.02						
107		68	.024	2.87	.01						
108		69	.003	.17	.02						
109		70	.001	.04	.02						
110		71	.001	.04	.02						
111		72	.003	.34	.03						
112		73	.003	.07	.02						
113		74	.002	.06	.01						
114		75	.002	.07	.02						
115		76	.001	.06	.02						
116		77	.001	.08	.02						
117		78	.001	.06	.01						
118		79	.001	.14	.02						
119		80	.001	.03	.01						
120		81	.002	.04							

NOTE: As requested, the tungsten values were run by x-ray as geochem tungstens. They are not assays.

NOTE: Rejects retained three weeks. Pulps retained three months unless otherwise arranged.

R. Brown
Registered Assayer, Province of British Columbia



KAMLOOPS RESEARCH & ASSAY LABORATORY LTD.

2095 WEST TRANS CANADA HIGHWAY — KAMLOOPS B.C.
V1S 1A7

PHONE: (604) 372-2784 — TELEX: 048-8320

CERTIFICATE OF ASSAY

B.C. LICENSED ASSAYERS
GEOCHEMICAL ANALYSTS
METALLURGISTS 7

TO Mohawk Oil Company Ltd.

Certificate No. K-3352

Date November 6, 1980

I hereby certify that the following are the results of assays made by us upon the herein described _____ samples

Kral No.	Marked		GOLD	SILVER	W						
			Ounces Per Ton	Ounces Per Ton	Percent	Percent	Percent	Percent	Percent	Percent	Percent
121	80 - 3	82	.002	.02	.02						
122		83	.001	TR	.02						
123		84	.001	.01	.03						
124		85	.001	TR	.02						
125		86	.001	.04	.02						
126		87	.002	.48	.01						
127		88	.001	.08	.03						
128		89	.001	.04	.03						
129		90	.001	.08	.03						
130		91	.001	.07	.02						
131		92	.021	.06	.02						
132		93	.003	.03	.02						
133		94	.001	.02	.01						
134		95	TR	.04	.02						
135		96	TR	.07	.02						
136		97	.001	.07	.02						
137		98	.001	.02	.03						
138		99	.001	.06	.01						
139		100	.001	.03	.02						
140		101	.001	.03	.02						

NOTE: As requested, the tungsten values were run by x-ray as geochem tungstens. They are not assays.

NOTE:
Rejects retained three weeks.
Pulps retained three months
unless otherwise arranged.

Registered Assayer, Province of British Columbia



KAMLOOPS RESEARCH & ASSAY LABORATORY LTD.

2095 WEST TRANS CANADA HIGHWAY — KAMLOOPS B.C.
V1S 1A7

PHONE: (604) 372-2784 — TELEX: 048-8320

CERTIFICATE OF ASSAY

B.C. LICENSED ASSAYERS
GEOCHEMICAL ANALYSTS
METALLURGISTS 8

TO Mohawk Oil Company Ltd.

Certificate No. K-3352

Date November 6, 1980

I hereby certify that the following are the results of assays made by us upon the herein described _____ samples

Kral No.	Marked		GOLD	SILVER	W						
			Ounces Per Ton	Ounces Per Ton	Percent	Percent	Percent	Percent	Percent	Percent	Percent
141	80 - 3	102	TR	.06	.01						
142		103	TR	.06	.03						
143		104	TR	.01	.02						
144		105	TR	.03	.03						
145		106	TR	.03	.02						
146		107	TR	.05	.02						
147		108	.001	.16	.02						
148		109	.001	.02	.02						
149		110	.001	.06	.03						
150		111	.001	.03	.03						
151		112	.001	.02	.03						
152		113	TR	.04	.03						
153		114	TR	.06	.03						
154		115	TR	.05	.02						
155		116	TR	.15	.08						
156		117	TR	.07	.02						
157		118	TR	.06	.03						
158		119	.001	.07	.03						
159		120	.001	.01	.02						
160		121	TR	.05	.03						

NOTE: As requested, the tungsten values were run by x-ray as geochem tungstens. They are not assays.

NOTE:
Rejects retained three weeks.
Pulps retained three months
unless otherwise arranged.

Registered Assayer, Province of British Columbia



KAMLOOPS RESEARCH & ASSAY LABORATORY LTD.

2095 WEST TRANS CANADA HIGHWAY — KAMLOOPS B.C.

V1S 1A7

PHONE: (604) 372-2784 — TELEX: 048-8320

CERTIFICATE OF ASSAY

B.C. LICENSED ASSAYERS
GEOCHEMICAL ANALYSTS
METALLURGISTS 9

TO Mohawk Oil Company Ltd.

Certificate No. K-3352

Date November 6, 1980

I hereby certify that the following are the results of assays made by us upon the herein described _____ samples

Kral No.	Marked	GOLD	SILVER	Pb	Zn	Cd	W			
		Ounces Per Ton	Ounces Per Ton	Percent	Percent	Percent	Percent	Percent	Percent	Percent
161	80 - 3 122	TR	.05				.02			
162	123	.001	.06				.02			
163	80 - 3 (127.5-130.0) 124	.001	.06				.01			
164	(213.6-214.8) 124	.003	.59				.02			
165	(274.8-277.6) 125	TR	.06				.02			
166	(284.3-292.4) 125	TR	.04				.02			
167	80 - 3 Kettle Pb Zone	.001	1.08	.40	1.84	.03	.02			

NOTE: As requested, the tungsten values were run by x-ray as geochem tungstens. They are not assays.

NOTE:
Rejects retained three weeks.
Pulps retained three months
unless otherwise arranged.

Registered Assayer, Province of British Columbia



KAMLOOPS RESEARCH & ASSAY LABORATORY LTD.

2095 WEST TRANS CANADA HIGHWAY — KAMLOOPS B.C.
V1S 1A7

PHONE: (604) 372-2784 — TELEX: 048-8320

CERTIFICATE OF ASSAY

B.C. LICENSED ASSAYERS
GEOCHEMICAL ANALYSTS
METALLURGISTS

TO Mohawk Oil Company Ltd.
203 - 3401 33rd Street
Vernon, B.C. V1T 7X7

Certificate No. K-3801

Date April 3, 1981

I hereby certify that the following are the results of assays made by us upon the herein described samples

Kral No	Marked	FOOTAGE	GOLD	SILVER	Pb	Zn	Cu	Mo	W		
			Ounces Per Ton	Ounces Per Ton	Percent	Percent	Percent	Percent	Percent	Percent	Percent
1	SAB 80-24 0001	30-40	.002	.06	.01	.02	-				
2	0002	40-50	.001	.04	TR	.02	-				
3	0003	50-60	.001	.04	TR	.02	-				
4	0004	60-66	.001	.04	.02	.02	-				
5	0005	70-80	.002	.11	.05	.16	-				
6	0006	80-90	TR	.06	.02	.05	-				
7	24 0007	100-110	.001	.14	.25	.37	-				
8	24 0008	110-120	TR	.16	.30	.49	-				
9	0009	120-126	TR	.04	.02	.03	-				
10	0010	160-162	TR	.05	TR	.01	-				
11	SAB 80-25 0011	30-40	.001	.18	.18	.24	TR				
12	0012	40-50	TR	.08	.01	.02	TR				
13	0013	50-60	TR	.05	.01	.01	TR				
14	0014	70-80	TR	.01	.01	.02	TR				
15	0015	90-97	TR	.07	.01	.01	TR				
16	0016	205-210	.001	.05	TR	.02	TR				
17	0017	210-220	TR	.04	TR	.02	TR				
18	0018	240-245	TR	.03	TR	.02	TR				
19	0019	180-190	TR	.05	TR	.02	TR				
20	SAB 80-7 0020	30-40	TR	.03	.01	.02	TR				

NOTE:
Rejects retained three weeks.
Pulps retained three months
unless otherwise arranged.

[Signature]
Registered Assayer, Province of British Columbia



KAMLOOPS RESEARCH & ASSAY LABORATORY LTD.

2095 WEST TRANS CANADA HIGHWAY — KAMLOOPS B.C.

V1S 1A7

PHONE: (604) 372-2784 — TELEX: 048-8320

CERTIFICATE OF ASSAY

B.C. LICENSED ASSAYERS
GEOCHEMICAL ANALYSTS
METALLURGISTS

TO Mohawk Oil Company Ltd.

Certificate No. K-3801

Date April 3, 1981

I hereby certify that the following are the results of assays made by us upon the herein described samples

Kral No.	Marked	FOOTAGE	GOLD	SILVER	Pb	Zn	Cu	Mo	W		
			Ounces Per Ton	Ounces Per Ton	Percent	Percent	Percent	Percent	Percent	Percent	Percent
21	SAB 80-7 0021	60-70	TR	.11	-	-	-				
22	0022	110-120	TR	.06	.01	.01	-				
23	0023	142-149	TR	.07	.01	.01	-				
24	0024	150-160	TR	.07	.01	.01	-				
25	0025	191-201	TR	.16	.01	.02	-				
26	0026	229-232	.001	.12	.01	.01	-				
27	0027	260-272	TR	.13	.01	.01	-				
28	0028	285-295	TR	.13	.01	.01	-				
29	0029	296-298	TR	.08	.01	.01	-				
30	0030	342-352	TR	.06	.01	.02	-				
31	0031	415-430	TR	.04	.01	.01	.01				
32	0032	430-435	.001	.07	.01	.01	.01				
33	0033	470-471 1/2	TR	.07	.01	TR	-				
34	0034	490 1/2 - 495 1/4	.003	.11	.01	.01	-				
35	0035	505-510	.002	.08	.01	TR	.01				
36	0036	572-582	.001	.07	.01	.01	TR				
37	0037	580-570	.002	.08	.01	.01	TR				.01
38	0038	590-600	.001	.06	.01	.01	TR				
39	0039	610-620	.001	.07	.01	.02	.01				
40	SAB 80-10 0040	82-93	TR	.25	.01	.01	.01	.002			

NOTE:
Rejects retained three weeks.
Pulps retained three months
unless otherwise arranged.

[Signature]
Registered Assayer, Province of British Columbia



KAMLOOPS RESEARCH & ASSAY LABORATORY LTD.

2095 WEST TRANS CANADA HIGHWAY — KAMLOOPS B.C.

V1S 1A7

PHONE: (604) 372-2784 — TELEX: 048-8320

CERTIFICATE OF ASSAY

B.C. LICENSED ASSA.
GEOCHEMICAL ANALYS.
METALLURGISTS

TO Mohawk Oil Company Ltd.

Certificate No. K-3801 3

Date April 3, 1981

I hereby certify that the following are the results of assays made by us upon the herein described _____ samples

Kral No.	Marked	GOLD	SILVER	Pb	Zn	Cu	Mo	W		
		Ounces Per Ton	Ounces Per Ton	Percent	Percent	Percent	Percent	Percent	Percent	Percent
	<i>NOTE</i>									
	<i>CONTAGE</i>									
41	SAS 80-10 0041 93-99	.001	.16	.01	TR	.01	.002			
42	0042 125-130	.003	.15	.01	TR	TR	.002			
43	0043 130-140	.002	.15	.01	.01	TR	.001			
44	0044 140-145	.002	.14	.01	TR	TR	.003			
45	0045 275-280	.001	.05	-	-	TR	-			
46	0046 305-310	TR	.01	-	-	TR	-			
47	M. MAR. 80-8 0051 70-80	.001	TR	TR	TR	TR	-			
48	0052 70-80	.001	.05	TR	.01	TR	-			
49	0053 114-118 1/2	.001	.05	.01	TR	TR	-			
50	0054 120-140	TR	.06	TR	TR	TR	-			
51	0055 143-150	.001	.06	.01	.01	TR	-			
52	0056 160-163	.002	.05	TR	.01	TR	-			
53	0057 220-230	.002	.04	TR	.01	TR	-			
54	0058 435-440	.001	.04	-	-	- ?	-			
55	0059 520-530	.001	.03	-	-	- ?	-			
56	0060 555-560	TR	.03	-	-	- ?	-	.02		
57	SAS 80-11 0061 157-160 1/2	.001	.04	-	-	- ?	-	- .02		

NOTE:
Rejects retained three weeks.
Pulps retained three months
unless otherwise arranged.

[Signature]
Registered Assayer, Province of British Columbia



KAMLOOPS RESEARCH & ASSAY LABORATORY LTD.

2095 WEST TRANS CANADA HIGHWAY — KAMLOOPS B.C.

VIS 1A7

PHONE: (604) 372-2784 — TELEX: 048-8320

CERTIFICATE OF ASSAY

B.C. LICENSED ASSAYERS
GEOCHEMICAL ANALYSTS
METALLURGISTS

TO Mohawk Oil Company Ltd.

Certificate No. K-3864 2

Date April 14, 1981

I hereby certify that the following are the results of assays made by us upon the herein described _____ samples

Kral No.	Marked	GOLD Ounces Per Ton	SILVER Ounces Per Ton	Cu Percent	Pb Percent	Zn Percent	W Percent				
								Percent	Percent	Percent	Percent
21	HOLE FOOTAGE SAB 80-12 0078 278-281	.001	.04	-	TR	.01	-				
22	SAB 80-13 0079 40.7-43.0	.003	.06	.01	TR	.01	-				
23	0080 46-57	.001	.06	TR	TR	.01	TR				
24	0081 73.6-78	.001	.04	TR	TR	.01	TR				
25	0082 79.4-89.1/2	.006	.15	TR	.01	.01	TR				
26	0083 144-148 1/2	.001	.06	TR	TR	.01	-				
27	SAB 80-13 0084 43.0-43 1/2	.23	6.65	.07	.03	.01	-				
28	0085 43 1/2-46	.003	.10	.01	TR	.01	-				
29	0086 151 1/2-152 3/4	.001	.10	.01	.01	.01	-				
30	0087 165-170	.001	.05	TR	-	-	-				
31	0088 170-179	TR	.06	TR	.01	.01	-				
32	0089 201-204	TR	.07	-	-	-	-				
33	0090 267-275	TR	.03	-	-	-	-				
34	0091 275-278 1/2	TR	.03	-	TR	.01	-				
35	SAB 80-14 0092 38.8-41.5	.025	.40	.05	TR	.03	-				
36	0093 41.5-42	.040	2.31	.39	TR	.04	-				
37	0094 42-49.5	.001	.03	.01	TR	.01	-				
38	0095 36 1/2-38.8	.001	.04	TR	TR	.01	-				
39	SAB 80-12 0096 163 1/2-167.8	.001	.03	TR	TR	.01	-				
40	0097 167.8-170	.002	.06	TR	TR	.01	-				

NOTE:
Rejects retained three weeks.
Pulps retained three months
unless otherwise arranged.

1090
1885



KAMLOOPS RESEARCH & ASSAY LABORATORY LTD.

2095 WEST TRANS CANADA HIGHWAY — KAMLOOPS B.C.

VIS 1A7

PHONE: (604) 372-2784 — TELEX: 048-8320

CERTIFICATE OF ASSAY

B.C. LICENSED ASSAYERS
GEOCHEMICAL ANALYSTS
METALLURGISTS

TO Mohawk Oil Company Ltd.

203 - 3401 33rd Street

Vernon, B.C. V1T 7X7

Certificate No. K-3864

Date April 14, 1981

I hereby certify that the following are the results of assays made by us upon the herein described _____ samples

Kral No	Marked	GOLD Ounces Per Ton	SILVER Ounces Per Ton	Cu Percent	Pb Percent	Zn Percent	W Percent				
								Percent	Percent	Percent	Percent
1	HOLE FOOTAGE SAB 80-1 0047 161-166	.001	.03	.01	-	-	-				
2	0048 241-251	.005	.04	.01	-	-	-				
3	0049 320-330	.002	.05	-	-	-	-				
4	0050 349-359	.003	.06	-	-	-	-				
5	0062 357-367	.003	.04	-	TR	.02	-				
6	0063 367-372	.004	.06	-	-	-	-				
7	0064 389.8-391.7	.003	.07	-	-	-	TR				
8	0065 399.5-404	.004	.07	-	-	-	-				
9	0066 408-417	TR	.10	-	-	-	-				
10	0067 432 1/2-439 1/2	.004	.05	-	TR	.01	-				
11	0068 499 3/4-503	.004	.06	-	.01	.01	-				
12	0069 463-468	.004	.01	-	-	-	-				
13	0070 475-485	.005	.04	TR	TR	.01	-				
14	0071 490-500	.009	.03	.01	TR	.01	-				
15	SAB 80-12 0072 53 1/2-60	.008	.25	TR	TR	.01	-				
16	0073 163 1/2-167.8	.003	.08	TR	TR	.01	-				
17	0074 167.8-170	.005	.09	-	TR	.01	-				
18	0075 170-173 1/2	.004	.05	TR	TR	.01	-				
19	0076 175-180	.001	.05	-	-	-	-				
20	0077 200-205	.001	.05	-	.01	.01	-				

NOTE:
Rejects retained three weeks.
Pulps retained three months
unless otherwise arranged.



KAMLOOPS RESEARCH & ASSAY LABORATORY LTD.

2095 WEST TRANS CANADA HIGHWAY — KAMLOOPS B.C.

V1S 1A7

PHONE: (804) 372-2784 — TELEX: 048-8320

CERTIFICATE OF ASSAY

**B.C. LICENSED ASSAYERS
GEOCHEMICAL ANALYSTS
METALLURGISTS**

TO Mohawk Oil Company Ltd.

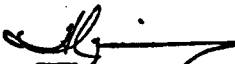
Certificate No. K-3864 3

Date April 14, 1981

I hereby certify that the following are the results of assays made by us upon the herein described _____ samples

Kral No.	Marked	GOLD	SILVER	Cu	Pb	Zn				
		Ounces Per Ton	Ounces Per Ton	Percent	Percent	Percent	Percent	Percent	Percent	Percent
41	<i>HOLE</i> SAB 80-19 0098	.001	.04	-	-	-				
42	<i>FOOTWALL</i> 89-108 49 0099	TR	.02	-	-	-				
43	87-8-98 75 SAB 80-16 0100	TR	.04	-	-	-				
44	98-58 44 0101 119 1/2-129 1/2	.001	.05	-	-	-				

NOTE:
Rejects retained three weeks.
Pulps retained three months
unless otherwise arranged.



Registered Assayer, Province of British Columbia



KAMLOOPS RESEARCH & ASSAY LABORATORY LTD.

2095 WEST TRANS CANADA HIGHWAY — KAMLOOPS B.C.

V1S 1A7

PHONE: (804) 372-2784 — TELEX: 048-8320

CERTIFICATE OF ASSAY

B.C. LICENSED ASSAYERS
GEOCHEMICAL ANALYSTS
METALLURGISTS

S11

MAY 14 1981

TO Mohawk Oil Company Ltd.

203 - 3401 33rd Street

Vernon, B.C. V1T 7X7

Certificate No. K-3959

Date May 11, 1981

I hereby certify that the following are the results of assays made by us upon the herein described _____ samples

Kral No.	Marked	GOLD	SILVER	Pb	Zn	Cu	Mo			
	HOLE No FOOTAGE									
1	SA8 80-22 0191-315 1/2-324 1/2	.001	.09	TR	.02	-	-			
2	80-22 0192 328 1/4 - 330	TR	.05	.01	.01	-	-			
3	80-22 0193 324 1/2 - 328 1/4	TR	.08	-	-	-	-			
4	80-22 0194 326 3/4 - 343	TR	.04	.01	.01	TR	-			
5	80-22 0195 343 - 352 1/4	.001	.12	-	-	-	-			
6	80-22 0196 353 1/4 - 357 3/4	TR	.08	-	-	-	-			
7	80-22 0197 368 - 370	TR	.05	-	-	-	-			
8	80-22 0198 385 1/2 - 389 1/2	TR	.07	-	-	-	-			
9	80-22 0199 389 3/4 - 393	.001	.13	-	-	-	-			
10	80-22 0200 394 - 400 3/4	.001	.20	.01	.01	.01	.002			
11	80-22 0201 400 3/4 - 412	.001	.20	-	-	-	-			
12	80-22 0202 418 - 424	TR	.21	-	-	-	-			
13	80-22 0203 424 - 427 3/4	TR	.08	-	-	-	-			
14	80-22 0204 428 1/4 - 438 1/4	TR	.12	-	-	-	-			
15	80-22 0205 438 1/4 - 444	TR	.02	-	-	-	-			
16	" 0206 444 - 450 1/2	.002	.02	-	-	-	-			
17	" 0207 452 - 449	.004	.29	-	-	-	TR			
18	" 0208 469 - 465	.003	.08	-	-	-	-			
19	" 0209 466 - 476	TR	.16	.01	-	.03	.002			
20	" 0210 476 - 480 1/2	TR	.07	-	-	-	-			

is retained three weeks.
is retained three months
is otherwise arranged.

Registered Assayer, Province of British Columbia



KAMLOOPS RESEARCH & ASSAY LABORATORY LTD.

2095 WEST TRANS CANADA HIGHWAY — KAMLOOPS B.C.

V1S 1A7

PHONE: (804) 372-2784 — TELEX: 048-8320

CERTIFICATE OF ASSAY

B.C. LICENSED ASSAYERS
GEOCHEMICAL ANALYSTS
METALLURGISTS

MAY 14 1981

TO Mohawk Oil Company Ltd.

Certificate No. K-3959 2

Date May 11, 1981

I hereby certify that the following are the results of assays made by us upon the herein described _____ samples

Kral No.	Marked	GOLD	SILVER	Pb	Zn	Cu	Mo			
	HOLE FOOTAGE									
21	SA8 80-22 0211 569 - 572 1/2	.001	.06	-	-	-	-			
22	80-23 0212 20 - 24 3/4	.004	.11	-	-	-	-			
23	" 0213 45 1/2 - 51	.001	.07	-	-	-	-			
24	" 0214 74 - 84	TR	.03	.01	.01	-	-			
25	" 0215 94 - 100	TR	.01	-	-	-	-			
26	" 0216 101 - 108 1/2	TR	.04	-	-	-	-			
27	" 0217 107 1/2 - 111 3/4	TR	.13	-	-	-	-			
28	" 0218 117 - 122 1/2	.005	.41	.01	.01	-	-			
29	" 0219 138 1/2 - 145 1/4	TR	.05	.02	.01	-	-			
30	" 0220 163 1/2 - 170	TR	.03	.01	.01	-	-			
31	" 0221 187 1/2 - 188 1/2	.001	.03	-	-	-	-			
32	" 0222 188 1/2 - 189 3/4	TR	.01	.01	.01	-	-			
33	" 0223 198 1/4 - 195 1/2	.002	.12	.02	.01	-	-			
34	" 0224 196 - 202 1/4	TR	.03	.02	.01	-	-			
35	" 0225 204 3/4 - 210	TR	.05	.02	.01	-	-			
36	" 0226 211 1/4 - 217 1/2	TR	.04	.01	.01	-	-			
37	" 0227 217 1/2 - 218 1/2	.002	1.00	.07	.06	-	-			
38	" 0228 218 1/2 - 227	TR	.09	.02	.01	-	-			
39	" 0229 232 1/2 - 240	.002	.48	.02	.09	-	-			
40	" 0230 240 - 246 1/2	.001	.03	-	-	-	-			

is retained three weeks.
is retained three months
is otherwise arranged.

Registered Assayer, Province of British Columbia

KAMLOOPS RESEARCH & ASSAY LABORATORY LTD.

2085 WEST TRANS CANADA HIGHWAY — KAMLOOPS B.C.

V1S 1A7

PHONE: (804) 372-2784 — TELEX: 048-8320

CERTIFICATE OF ASSAY

B.C. LICENSED ASSAYERS
GEOCHEMICAL ANALYSTS
METALLURGISTS

MAY 14 1981

TO Mohawk Oil Company Ltd.

Certificate No. K-3959 3

Date May 11, 1981

I hereby certify that the following are the results of assays made by us upon the herein described _____ samples

No.	Marked		GOLD	SILVER	Pb	Zn	Cu	Mo			
			Ounces Per Ton	Ounces Per Ton	Percent	Percent	Percent	Percent	Percent	Percent	Percent
41	HOLE S&B 8-23	0231	.001	.05	-	-	-	-			
42		0232	TR	.17	.01	.01	-	TR			
43		0233	.001	.04	.02	.01	-	-			
44		0234	.001	.14	.01	.01	-	-			
45		0235	.001	.11	-	-	-	-			
46		0236	.001	.05	.01	.01	-	-			
47		0237	TR	.01	-	-	-	-			
48		0238	TR	.02	-	-	-	-			
49		0239	TR	.07	-	-	-	-			

Assays retained three weeks.
Samples retained three months
if otherwise arranged.


 Registered Assayer, Province of British Columbia



KAMLOOPS RESEARCH & ASSAY LABORATORY LTD.

2095 WEST TRANS CANADA HIGHWAY — KAMLOOPS B.C.

V1S 1A7

PHONE: (804) 372-2784 — TELEX: 048-8320

CERTIFICATE OF ASSAY

B.C. LICENSED ASSAYERS
GEOCHEMICAL ANALYSTS
METALLURGISTS

MAY 15 1981

TO Mohawk Oil Company Ltd.

Certificate No. K-3935 3

Date May 13, 1981

I hereby certify that the following are the results of assays made by us upon the herein described samples

Kral No.	Marked		GOLD	SILVER	Pb	Zn	Cu	Mo	W		
			Ounces Per Ton	Ounces Per Ton	Percent	Percent	Percent	Percent	Percent	Percent	Percent
	<i>HOPE</i>	<i>FOURAGE</i>									
41	SAB 80-21	0142 144-159	.001	.04	-	-	-	-	-	-	-
42		0143 159-164	.002	.10	.01	.01	-	-	-	-	-
43		0144 165-169	.002	.21	.01	.01	-	-	-	-	-
44		0145 170 1/2 - 171 3/4	.001	.11	.01	.01	-	-	-	-	-
45		0146 185-187 1/2	.001	.05	.01	.01	-	-	-	-	-
46		0147 192-194 1/2	.001	.12	TR	.01	-	-	-	-	-
47		0148 198 3/4 - 198 3/4	.003	.05	.01	.02	-	-	-	-	-
48		0149 202-209 1/2	.001	.04	-	-	-	-	-	-	-
49		0150 209 1/2 - 212 1/4	.002	.14	.01	.01	-	-	-	-	-
50		0151 212 3/4 - 217 3/4	.001	.06	.01	.01	-	.002	-	-	-
51		0152 217 3/4 - 220 3/4	.001	.10	-	-	-	-	-	-	-
52		0153 227 3/4 - 237	.001	TR	-	-	-	-	-	-	-
53		0154 237-243	.001	.10	.01	.01	-	-	-	-	-
54		0155 243-248 1/2	.001	.03	.01	.01	-	-	-	-	-
55		0156 248 1/2 - 255 1/2	.001	.03	-	-	-	-	-	-	-
56		0157 254 1/2 - 261 1/4	.001	.08	-	-	-	-	-	-	-
57		0158 261 1/4 - 271 1/4	.002	.06	-	-	-	-	-	-	-
58		0159 271 1/4 - 278 1/2	.001	.10	-	-	-	-	-	-	-
59		0160 161 3/4 - 165	.001	.10	-	-	-	-	-	-	-
60		0161 355-359	.001	.05	-	-	-	-	-	-	-

NOTE:
Rejects retained three weeks.
Pulps retained three months
unless otherwise arranged.

Registered Assayer, Province of British Columbia



KAMLOOPS RESEARCH & ASSAY LABORATORY LTD.

2095 WEST TRANS CANADA HIGHWAY — KAMLOOPS B.C.

V1S 1A7

PHONE: (804) 372-2784 — TELEX: 048-8320

CERTIFICATE OF ASSAY

B.C. LICENSED ASSAYERS
GEOCHEMICAL ANALYSTS
METALLURGISTS

MAY 15 1981

TO Mohawk Oil Company Ltd.

Certificate No. K-3935 4

Date May 13, 1981

I hereby certify that the following are the results of assays made by us upon the herein described samples

Kral No.	Marked		GOLD	SILVER	Pb	Zn	Cu	Mo	W		
			Ounces Per Ton	Ounces Per Ton	Percent	Percent	Percent	Percent	Percent	Percent	Percent
	<i>HOPE</i>	<i>FOURAGE</i>									
61	SAB 80-22	0162 15-24	.002	.05	TR	.01	-	-	-	-	-
62		0163 27-32	.001	.12	-	-	-	-	-	-	-
63		0164 32-43	.001	.10	.01	.01	TR	-	-	-	-
64		0165 43-45	.002	.09	-	-	-	-	-	-	-
65		0166 47-55 3/4	.002	.15	.01	TR	TR	-	-	-	-
66		0167	.001	.11	TR	.01	-	-	-	-	-
67		0168 55 3/4 - 64 1/2	TR	.04	-	-	-	-	-	-	-
68		0169 64 1/2 - 71 3/4	.001	.11	-	-	TR	-	-	-	-
69		0170 71 3/4 - 72 3/4	.002	.13	-	-	TR	-	-	-	-
70		0171 72 3/4 - 75	.001	.06	-	-	-	-	-	-	-
71		0172 75-76 3/4	.001	.23	-	-	TR	TR	-	-	-
72		0173 76 3/4 - 84 1/2	.001	.06	TR	.01	-	-	-	-	-
73		0174 84 1/2 - 89 1/4	.002	.05	-	-	TR	-	-	-	-
74		0175 89 1/4 - 93	.002	.06	-	-	TR	-	-	-	-
75		0176 93-101 1/4	.001	.18	-	-	TR	TR	-	-	-
76		0177 101 1/4 - 107 1/2	.002	.10	-	-	-	-	-	-	-
77		0178 201 1/4 - 205	.001	.11	-	-	-	-	-	-	-
78		0179 210-211 1/4	.002	.06	-	-	-	-	-	-	-
79		0180 252-254 1/4	.002	.13	-	-	-	-	-	-	-
80		0181 254 3/4 - 257	.002	.08	-	-	-	-	-	-	-

NOTE:
Rejects retained three weeks.
Pulps retained three months
unless otherwise arranged.

Registered Assayer, Province of British Columbia



KAMLOOPS RESEARCH & ASSAY LABORATORY LTD.

2085 WEST TRANS CANADA HIGHWAY — KAMLOOPS B.C.
V1S 1A7

PHONE: (804) 372-2784 — TELEX: 048-8320

CERTIFICATE OF ASSAY

B.C. LICENSED ASSAYERS
GEOCHEMICAL ANALYSTS
METALLURGISTS

MAY 15 1981

TO Mohawk Oil Company Ltd.


Certificate No. K-3935 5

Date May 13, 1981

I hereby certify that the following are the results of assays made by us upon the herein described _____ samples

Kral No.	Marked	GOLD	SILVER	Pb	Zn	Cu	Mo	W		
		Ounces Per Ton	Ounces Per Ton	Percent	Percent	Percent	Percent	Percent	Percent	Percent
81	HTLK SA 6 80-220182 263-269 1/4	.001	.31	.02	.01	-	.002	-		
82	0183 274-280 1/4	.002	.11	-	-	-	-	-		
83	0184 281 1/2 - 285	.003	.50	-	-	-	.002	.01		
84	0185 285-289 1/4	.001	.15	.01	.01	-	-	-		
85	0186 291-299 1/4	.001	.10	TR	TR	-	-	-		
86	0187 301 1/2 - 303 1/4	.001	.13	-	-	-	-	-		
87	0188 305 - 308 1/2	.001	.11	TR	TR	TR	-	-		
88	0189 309 1/4 - 312 1/2	.016	.14	-	-	-	-	-		
89	0190 312 1/2 - 315 1/4	.003	.24	.01	.01	-	-	-		

NOTE:
Rejects retained three weeks.
Pulps retained three months
unless otherwise arranged.


Registered Assayer, Province of British Columbia



KAMLOOPS RESEARCH & ASSAY LABORATORY LTD.

2095 WEST TRANS CANADA HIGHWAY — KAMLOOPS B.C.
V1S 1A7

PHONE: (604) 372-2784 — TELEX: 048-8320

CERTIFICATE OF ASSAY

B.C. LICENSED ASSAYERS
GEOCHEMICAL ANALYSTS
METALLURGISTS

TO Mohawk Oil Company Ltd.
203 - 3401 33rd Street
Vernon, B.C. V1T 7X7

Certificate No. K-4009 - 1
Date May 28, 1981

I hereby certify that the following are the results of assays made by us upon the herein described _____ samples

Kral No.	Marked	GOLD Ounces Per Ton	SILVER Ounces Per Ton	Pb Percent	Zn Percent	Cu Percent				
	<i>HOLE</i>									
	<i>FOOTAGE</i>									
1	SAB 80-23 0240	362 1/4 - 372 1/2	.001	.12	TR	.01	-			
2	0241	313 3/4 - 320 1/4	.001	.12	TR	-	-			
3	0242	321 1/2 - 329 1/4	.001	.10	-	-	-			
4	0243	326 3/4 - 335	.001	.11	TR	TR	-			
5	0244	39 1/2 - 40	.002	.63	-	-	-			
6	0245	409 1/4 - 411 1/2	.001	.08	-	-	-			
7	0246	425 1/4 - 435	.001	.08	-	-	-			
8	0247	457 - 468 1/4	.001	.09	TR	.01	-			
9	0248	445 - 460 1/4	.001	.09	TR	.01	-			
10	0249	483 1/4 - 485 1/2	.001	.09	-	-	-			
11	0250	501 1/4 - 508	.001	.13	-	-	-			
12	0251	508 3/4 - 518 3/4	TR	.13	-	-	-			
13	0252	525 - 520 1/2	TR	.13	TR	.01	-			
14	0253	624 - 629	TR	.10	-	-	-			
15	0254	662 1/4 - 665 1/2	.001	.10	-	-	-			
16	0255	665 1/2 - 671 1/2	TR	.10	-	-	-			
17	0256	671 1/2 - 678 1/2	TR	.15	-	-	-			
18	0257	678 1/2 - 685 1/2	TR	.25	-	-	-			
19	0258	686 1/4 - 690 1/4	.004	.17	-	-	-			
20	0259	700 1/2 - 706	.002	.21	-	-	-			

NOTE:
Rejects retained three weeks.
Pulps retained three months
unless otherwise arranged.

Registered Assayer, Province of British Columbia



KAMLOOPS RESEARCH & ASSAY LABORATORY LTD.

2095 WEST TRANS CANADA HIGHWAY — KAMLOOPS B.C.
V1S 1A7

PHONE: (604) 372-2784 — TELEX: 048-8320

CERTIFICATE OF ASSAY

B.C. LICENSED ASSAYERS
GEOCHEMICAL ANALYSTS
METALLURGISTS

TO Mohawk Oil Company Ltd.

Certificate No. K-4009 2
Date May 29, 1981

I hereby certify that the following are the results of assays made by us upon the herein described _____ samples

Kral No.	Marked	GOLD Ounces Per Ton	SILVER Ounces Per Ton	Pb Percent	Zn Percent	Cu Percent				
	<i>HOLE</i>									
	<i>FOOTAGE</i>									
21	SAB 80-5 0260	57 1/2 - 61	.002	.11	-	-	-			
22	0261	75 1/4 - 82 3/4	.001	.08	-	-	-			
23	0262	87 3/4 - 98	.001	.14	-	-	TR			
24	0263	98 - 100 1/2	.001	.11	-	-	-			
25	0264	100 1/2 - 108 1/4	.001	.11	-	-	-			
26	0265	124 1/2 - 115	.001	.08	-	-	-			
27	0266	119 - 124 1/2	.001	.11	-	-	-			
28	0267	134 - 138 1/2	.001	.07	-	-	-			
29	0268	142 1/2 - 148 1/2	.002	.15	-	-	-			
30	0269	160 1/2 - 163	.001	.13	-	-	-			
31	0270	167 1/4 - 176 1/2	.001	.09	-	-	-			
32	0271	180 1/2 - 186	.001	.10	-	-	-			
33	0272	181 1/4 - 189 1/4	.001	.08	-	-	-			
34	0273	193 1/2 - 202 1/2	TR	.08	.01	.01	-			
35	0274	451 - 561	TR	.03	-	-	-			
36	0275	592 - 602	.001	.12	-	-	-			
37	0276	639 - 649	.001	.08	-	-	-			
38	0277	649 - 659	.001	.05	-	-	-			
39	0278	665 - 675	.001	.08	-	-	-			
40	0279	686 1/4 - 693 1/2	TR	.04	-	-	-			

NOTE:
Rejects retained three weeks.
Pulps retained three months
unless otherwise arranged.

Registered Assayer, Province of British Columbia



KAMLOOPS RESEARCH & ASSAY LABORATORY LTD.

2095 WEST TRANS CANADA HIGHWAY — KAMLOOPS B.C.

VTS 1A7

PHONE: (804) 372-2784 — TELEX: 048-8320

CERTIFICATE OF ASSAY

B.C. LICENSED ASSAYERS
GEOCHEMICAL ANALYSTS
METALLURGISTS

TO Mohawk Oil Company Ltd.

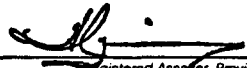
Certificate No. K-4009 3

Date May 29, 1981

I hereby certify that the following are the results of assays made by us upon the herein described _____ samples

Kral No.	Marked	GOLD	SILVER	Pb	Zn	Cu	As	Sb		
		Ounces Per Ton	Ounces Per Ton	Percent	Percent	Percent	Percent	Percent	Percent	Percent
	<i>ANAL</i>									
	<i>ANAL</i>									
41	SAB 80-5 0280 707-717	.001	.02	-	-	-	-	-	-	-
42	0281 717-727	.001	.05	-	-	-	-	-	-	-
43	0282 727-737 1/2	TR	.12	-	-	-	-	-	-	-
44	0283 769-775	TR	.10	-	-	-	-	-	-	-
45	0284 775-785	.001	.12	-	-	-	-	-	-	-
46	0285 785-795	TR	.11	-	-	-	-	-	-	-
47	0286	.001	.11	-	-	-	-	-	-	-
48	0287	TR	.10	-	-	-	-	-	-	-
49	4951	.001	.18	-	-	-	-	-	-	-
50	4952	-	-	.01	TR	.01	-	-	-	-
51	4953	-	-	.01	TR	.01	-	-	-	-
52	1-10"	.035	1.16	.75	-	-	.56	.42		
53	2	.037	1.14	.73	-	-	.54	.41		
54	3-15"	.034	1.17	.75	-	-	.56	.43		
55	4-15"	.037	1.22	.75	-	-	.56	.47		
56	5-14"	.038	1.19	.75	-	-	.55	.41		
57	6-12"	.038	1.13	.75	-	-	.55	.38		
58	7-12"	.030	1.12	.76	-	-	.54	.39		
59	8-14"	.033	1.29	.79	-	-	.58	.42		
60	9-14"	.032	1.20	.77	-	-	.56	.43		

NOTE:
Rejects retained three weeks.
Pulps retained three months
unless otherwise arranged.


Registered Assayer, Province of British Columbia



KAMLOOPS RESEARCH & ASSAY LABORATORY LTD.

2095 WEST TRANS CANADA HIGHWAY — KAMLOOPS B.C.
V1S 1A7

PHONE: (804) 372-2784 — TELEX: 048-8320

CERTIFICATE OF ASSAY

18857-7890
B.C. LICENSED ASSAYERS
GEOCHEMICAL ANALYSTS
METALLURGISTS

TO Mohawk Oil Company Ltd.

203 - 3401 33rd Street

Vernon, B.C. V1T 7X7

Certificate No. K-4107

Date June 11, 1981

I hereby certify that the following are the results of assays made by us upon the herein described samples

Kral No.	Marked	GOLD		SILVER								
		Ounces Per Ton	Ounces Per Ton	Percent	Percent	Percent	Percent	Percent	Percent	Percent	Percent	
1	HOLE SAB 80-4 0288	FOURALS 392 3/4 - 408	.002	.03								
2	0289	403 - 413	.005	.02								
3	0290	458 1/2 - 465	.007	.03								
4	0291	489 - 495	.003	.04								
5	0292	520 - 526 1/4	.003	.15								
6	0293	570 1/2 - 575	.011	.05								
7	0294	575 - 582	.003	.06								
8	0295	529 - 534	.002	.04								
9	0296	590 1/2 - 595 1/2	.002	.03								
10	0297	573 - 581	.002	.04								
11	0298	585 1/2 - 585 1/2	.002	.04								
12	0299	595 1/2 - 605	.002	.03								
13	0300	605 - 610 1/2	.002	.04								
14	0301	612 1/2 - 622 1/2	.002	.06								
15	0302	625 1/4 - 628 1/4	.002	.10								
16	0303	631 1/4 - 643	.004	.04								
17	0304	708 - 723 1/4	.002	.05								
18	SAB 80-6 0305	556 3/4 - 558	.003	.06								
19	0306	576 - 579 3/4	.002	.05								
20	0307	609 3/4 - 622 1/4	.001	.05								

NOTE:
Specs retained three weeks.
Specs retained three months
otherwise arranged.

Registered Assayer, Province of British Columbia



KAMLOOPS RESEARCH & ASSAY LABORATORY LTD.

2095 WEST TRANS CANADA HIGHWAY — KAMLOOPS B.C.
V1S 1A7

PHONE: (804) 372-2784 — TELEX: 048-8320

CERTIFICATE OF ASSAY

B.C. LICENSED ASSAYERS
GEOCHEMICAL ANALYSTS
METALLURGISTS

TO Mohawk Oil Company Ltd.

Certificate No. K-4107 2

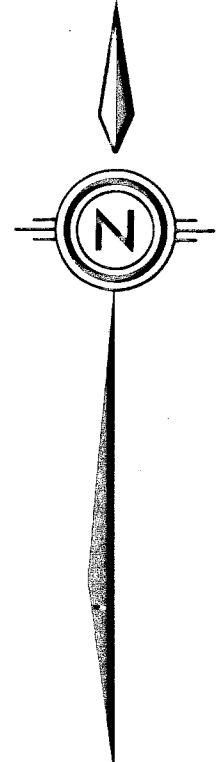
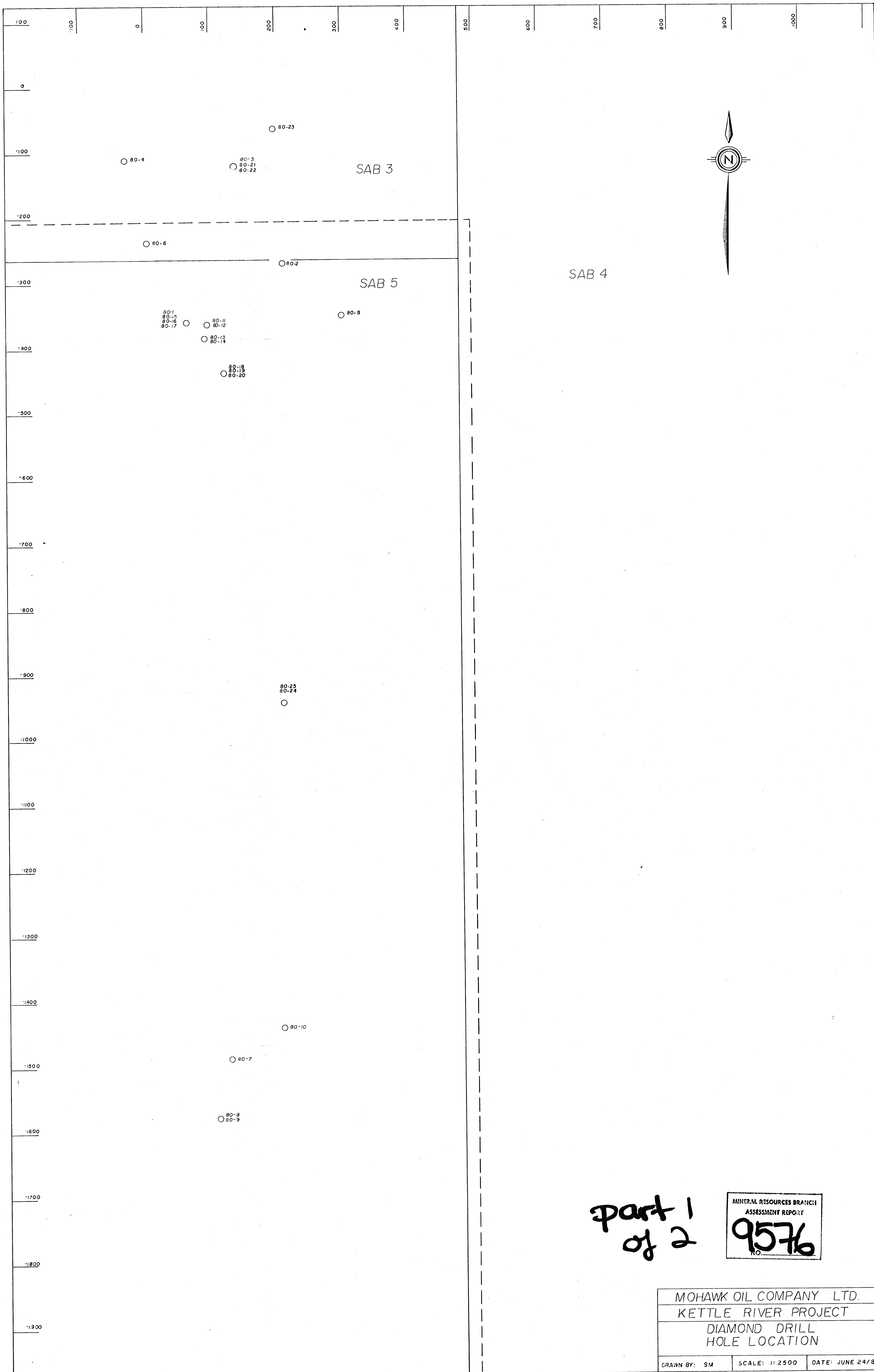
Date June 11, 1981

I hereby certify that the following are the results of assays made by us upon the herein described samples

Kral No.	Marked	GOLD		SILVER								
		Ounces Per Ton	Ounces Per Ton	Percent	Percent	Percent	Percent	Percent	Percent	Percent	Percent	
21	HOLE SAB 80-6 0308	FOURALS 714 3/4 - 719	.001	.05								
22	SAB 80-2 0309	452 1/4 - 464 1/2	.002	.03								
23	0310	612 1/4 - 616	.002	.04								

NOTE:
Specs retained three weeks.
Specs retained three months
otherwise arranged.

Registered Assayer, Province of British Columbia



part 1
of 2

MINERAL RESOURCES BRANCH
ASSESSMENT REPORT
9576
NO.

MOHAWK OIL COMPANY LTD.		
KETTLE RIVER PROJECT		
DIAMOND DRILL HOLE LOCATION		
DRAWN BY: SM	SCALE: 1: 2500	DATE: JUNE 24/81