

81-#614  
-9594



1980 DRILLING REPORT  
FAR NORTH JADE PROPERTY  
OMINECA MINING DIVISION MAPSHEET 93N/13W  
OGDEN 1-8, L.F. 1-6, L.C.F. 1-4, VANCOUVER 2-7, RALF 1-10  
LATITUDE 56°25' LONGITUDE 125°50'  
owned by FAR NORTH JADE LTD.  
operated by PRIMEX EXPLORATIONS LTD.

FOR  
PRIMEX EXPLORATIONS LTD.  
8119 FREMLIN STREET  
VANCOUVER, B.C.

BY  
KIRK MAKEPEACE  
OPERATIONS MANAGER  
PRIMEX EXPLORATIONS LTD.

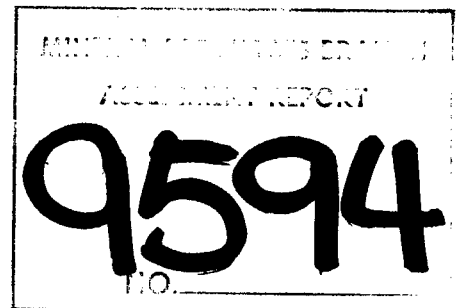


TABLE OF CONTENTS

INTRODUCTION: .....page 2

LOCATION and ACCESS: ..... 2

GENERAL GEOLOGY & HISTORY: ..... 2

1980 DRILLING PROGRAM: ..... 3

INTERPRETATION OF RESULTS: ..... 3

1980 DRILLING DATA: ..... 4

AUTHOR'S QUALIFICATIONS: ..... 4

CLAIMS LIST: ..... 5

GENERAL INDEX MAP A: ..... 6

GENERAL INDEX MAP B: ..... 7

NTS GENERAL LOCATION MAP: ..... 8

NTS MINERAL CLAIMS MAP: ..... 9

ITEMIZED COST STATEMENT: ..... 10, 11

LOCATION OF DRILLED BOULDERS MAP:  
FIGURES 1 & 2 ..... attached pocket

INTRODUCTION:

During the period of May 20 to October 15, 1980, a crew averaging 4 men completed 407.8 metres of exploration diamond drilling on the Far North Jade property located on Ogden Mountain.

Location and Access:

Mt. Ogden is located in the Omineca mountains, approximately 130 kilometres northeast of Smithers, B.C. The property is located on the northwest slope of the mountain, and is most easily reached by helicopter from Lovell Cove situated on Takla Lake where an all-weather air strip is maintained. All supplies and personnel can be serviced by air charter service from Smithers or Prince George. A rough 4-wheel drive road also connects the property to a secondary road at Fall River, 40 kilometres south.

General Geology:

Much of the property is underlain by serpentine formed by alteration of peridotite and dunite intruded into volcanic and sedimentary rocks of the Cache Creek Group. The nephrite jade found on the properties both in-place and as alluvial boulders is often found where the serpentine is dark green to brownish green and with a polished nodular appearance.

History:

Nephrite Jade was first discovered on Ogden Mtn. by Larry Owen and Stan Porayko in 1967. Alluvial jade was mined in 1967, 1968, and in 1969 a large high grade "in-situ" deposit was discovered. Production of cut blocks of nephrite was continued until 1976 by New World Jade and B.C. Gem. Since 1976 the claims have been held by Continental Jade Ltd. Larry Barr discovered jade in 1969 on the northern portion of the mountain and Far North Jade Ltd. has intermittently mined placer and in-place boulder jade from its property since 1970.

1980 DRILLING PROGRAM:

In 1980, Primex Explorations Limited conducted a drilling program on claims owned by Far North Jade Ltd., located on Ogden Mountain. 6 drillers were employed (average crew size 4) under the supervision of Kirk Makepeace. The program commenced May 20th and was completed on October 15th. Weather conditions were the determining factor in the length of the drilling program.

Drilling was done with JKS Packsack drills using xrp size bits and core-barrels. The cores retrieved had a diameter of 2.3 centimetres. All exploration drilling was conducted on the Ogden 4, 5, and 6, and LF 4&6 claims where deposits of talus and alluvial boulders and in-situ pods of nephrite jade are located. (See figures 1 & 2)

A total of 92 boulders were tested and drilling amounted to 407.8 metres. Drilling costs for the 1980 season amounted to \$400.00 per metre. These drilling costs are higher than for other materials because of the tough finely crystalline nature of the jade. Diamond bits were normally worn out after 2-3 metres of drilling.

No drill logs were kept because all material drilled was jade and core evaluation was based on such qualities as translucency, colour, and amount of fractures. All core is stored at the camp located on the property.

INTERPRETATION OF RESULTS:

1980 drilling results determine proven reserves of 200-300 tonnes of marketable jade and possible reserves of another 300-500 tonnes. Much of the nephrite jade found on the Far North Jade property is of a high grade quality, (ie. uniform green colour, very few fractures and veins of cross fiber tremolite and low visible content of impurities such as magnetite, chromite and chlorite). Unfortunately much of this jade will be difficult and costly to mine due to its large size and the problem and expense associated with reducing the boulders into manageable pieces. Further removal of overburden and additional drilling will likely increase the reserves of jade on the company's property.

1980 DRILLING DATA

Number of boulders drilled ..... 92  
Number of drill holes ..... 276  
Total footage drilled ..... 407.89 metres  
Total drilling costs ..... \$162,996.10  
Drilling costs per metre ..... \$399.61 \*  
Tonnage evaluated: Proven reserves ..... 200-300 tonnes  
                          Possible reserves ..... 300-500 tonnes

\*(determined by total drilling costs divided by metres drilled;  
\$162,996.10 / 407.89metres = \$399.61 per metre. In application of  
work on the claims this cost will be rounded out to \$400.00 per metre.

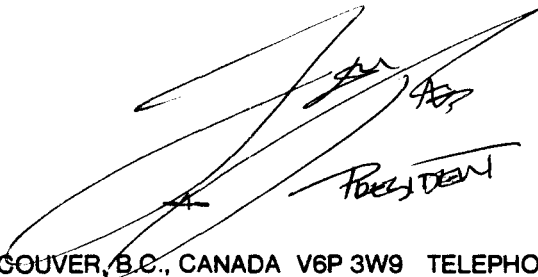
AUTHOR'S QUALIFICATIONS

Author's qualifications based on field experience in relationship to  
nephrite jade exploration in the Province of British Columbia.

1976 - 1978 Field Manager in charge of exploration and mining for  
Nephro-Jade Canada Ltd.

1979 - 1981 Operations Manager for Primex Explorations Ltd. Extensive  
field experience on jade properties in Liard and  
Omineca mining divisions.

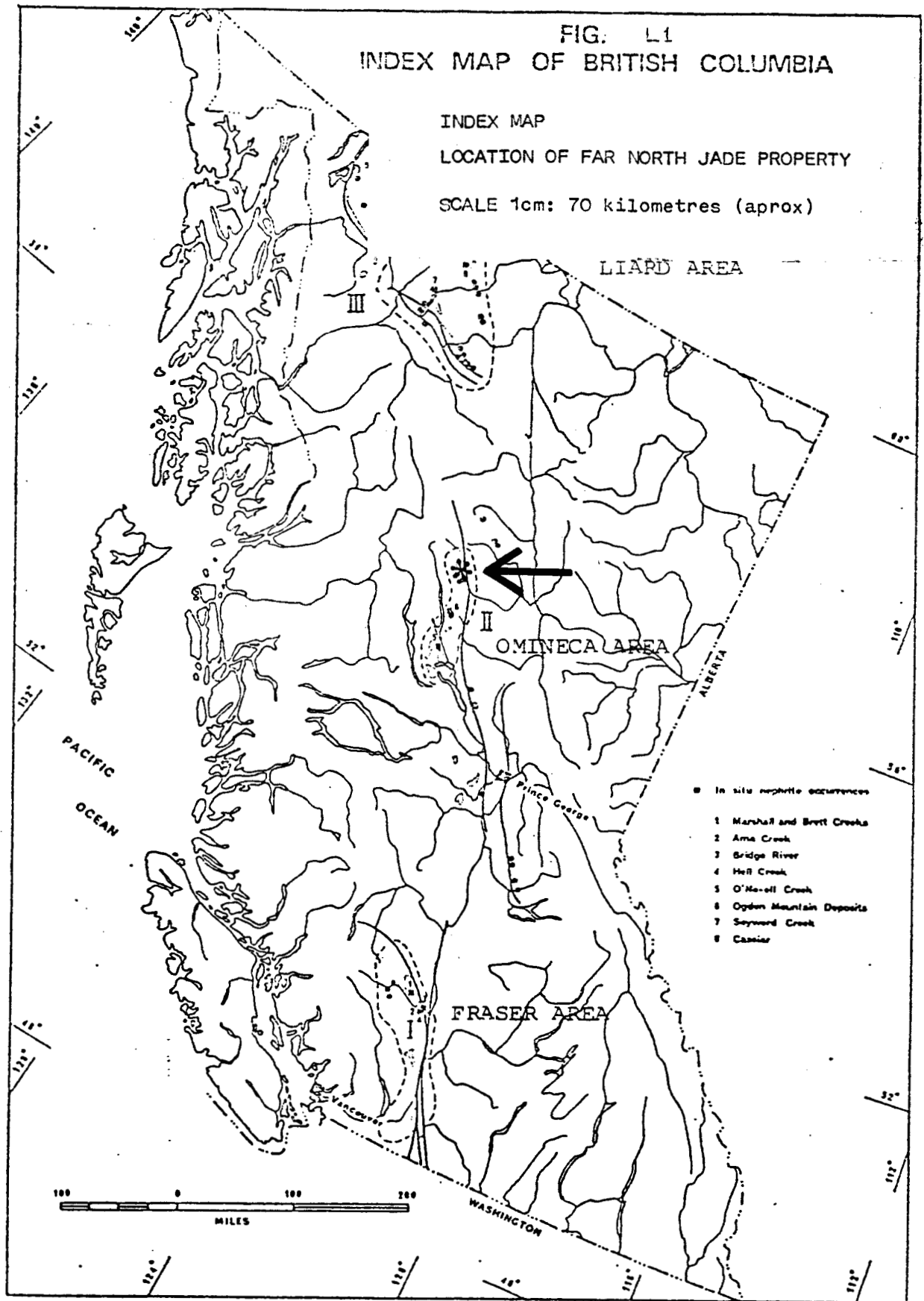
KIRK MAKEPEACE  
for  
PRIMEX EXPLORATIONS LIMITED



Handwritten signature of Kirk Makepeace, with the word "PRESIDENT" written below it.

FAR NORTH JADE LTD. - MINERAL CLAIMS LIST:

<u>Name</u>	<u>Record No.</u>	<u>Expiry Date</u>
Ogden 1	129544P	November 26/83
Ogden 2	129545P	" "
Ogden 3	129546P	" "
Ogden 4	129547P	" "
Ogden 5	129548P	" "
Ogden 6	129549P	" "
Ogden 7	129550P	" "
Ogden 8	129551P	" "
L.F. 1	79755	August 6/84
L.F. 2	79756	" "
L.F. 3	79757	" "
L.F. 4	79758	" "
L.F. 5	79759	August 6/85
L.F. 6	79760	" "
LCF 1	79871	September 2/82
LCF 2	79872	" "
LCF 3	115684M	September 7/82
LCF 4	115685M	" "
Vancouver 2	81056	October 8/81
Vancouver 3	81057	" "
Vancouver 4	81058	" "
Vancouver 5	81059	" "
Vancouver 6	81060	" "
Vancouver 7	81061	" "
Ralf 1	115686M	September 7/81
Ralf 2	115687M	" "
Ralf 3	115688M	" "
Ralf 4	115689M	" "
Ralf 5Fr.	117840M	" "
Ralf 6	117837M	" "
Ralf 7	117838M	" "
Ralf 8	117839M	" "
Ralf 9 Fr.	117841M	" "
Ralf 10 Fr.	117842M	" "



(From Fraser, J.R., 1973)

INDEX MAP

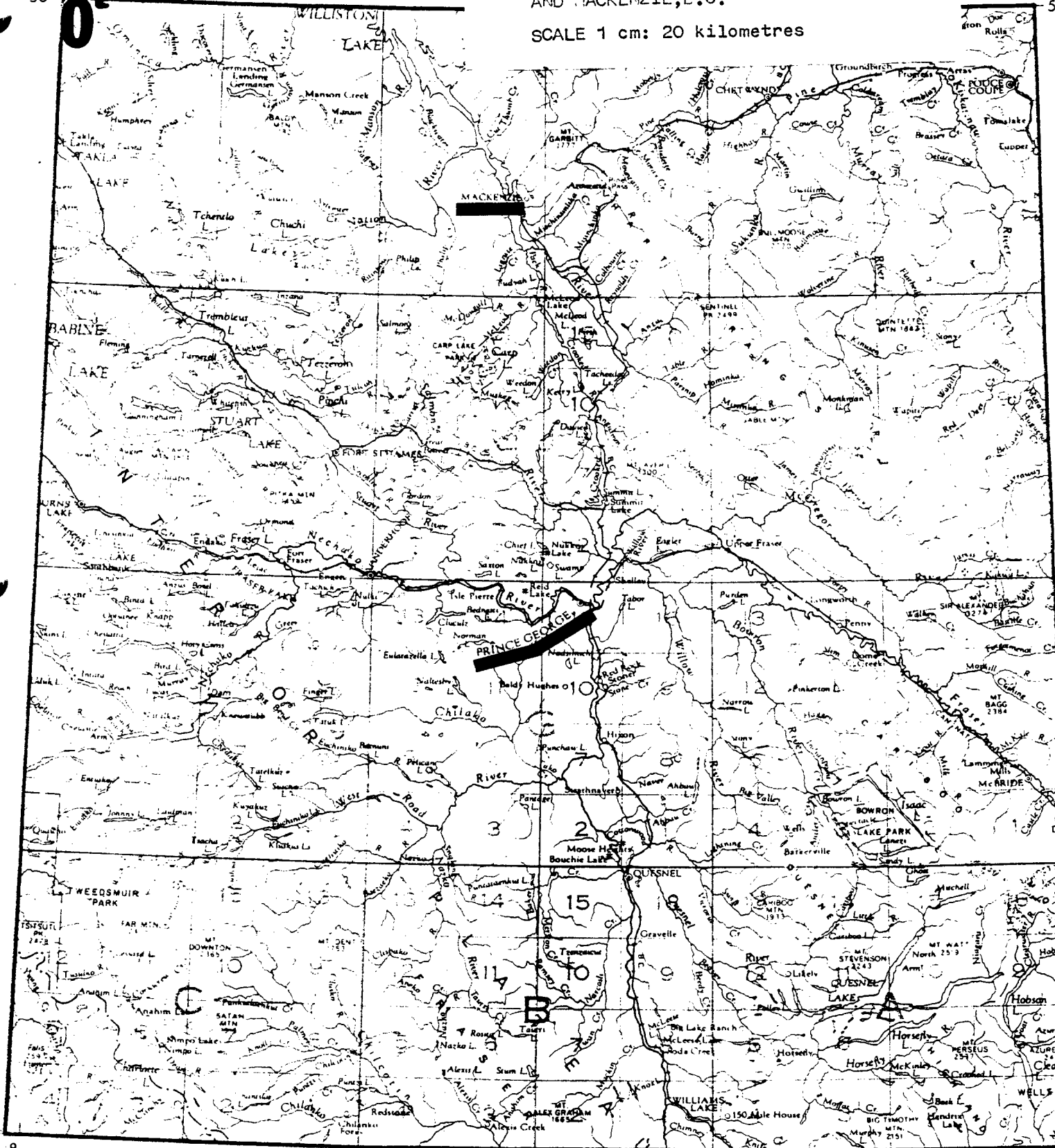
LOCATION OF OGDEN MTN. and  
POSITION OF TOWNS OF PRINCE GEORGE  
AND MACKENZIE, B.C.

126°  
56°

OGDEN MOUNTAIN PROPERTY

120°  
56°

SCALE 1 cm: 20 kilometres





126°00'

45'

10'

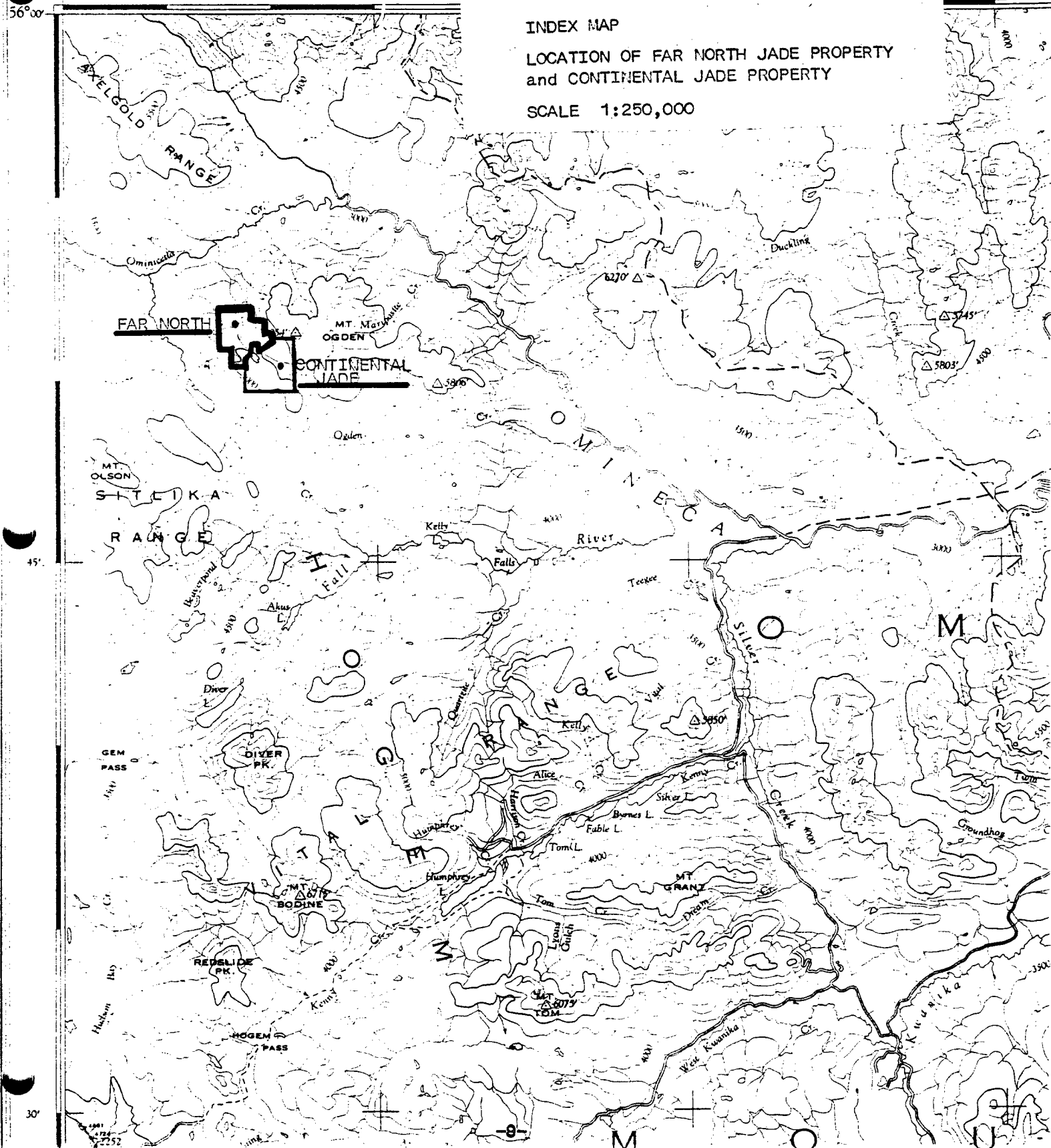
15'

56°00'

INDEX MAP

LOCATION OF FAR NORTH JADE PROPERTY  
and CONTINENTAL JADE PROPERTY

SCALE 1:250,000



Ominicetla

INDEX MAP

LOCATION OF FAR NORTH JADE LTD.  
MINERAL CLAIMS

MAP SHEET M93N/13W

SCALE 1 cm: 500 metres

22050	22051	22052
22053	22054	22055
22056	22057	22058
22059	22060	22061
22062	22063	22064
22065	22066	22067
22068	22069	22070
22071	22072	22073
22074	22075	22076
22077	22078	22079
22080	22081	22082
22083	22084	22085
22086	22087	22088
22089	22090	22091
22092	22093	22094
22095	22096	22097
22098	22099	22100

12853	12854	12855	12856
12857	12858	12859	12860
12861	12862	12863	12864
12865	12866	12867	12868
12869	12870	12871	12872
12873	12874	12875	12876
12877	12878	12879	12880
12881	12882	12883	12884
12885	12886	12887	12888
12889	12890	12891	12892
12893	12894	12895	12896
12897	12898	12899	12900

ANGELA 1	490 (10)
DORIS 2	491 (10)
THERESA 3	492 (10)
TAKAKO 4	493 (10)

FRAN 3	FRAN 2
22690	22688 (10)
FRAN 4	FRAN 1
2270	2267 (10)

TEAM 615 (H) 33307 U

UIST 4	1828 (7)
--------	----------

ITEMIZED COST STATEMENT

A. Wages (total includes bonuses and overtime)

Name	Rate	Dates	Total
Kirk Makepeace	\$1700/month	May 15 - Sept.30	\$6624.50
John Makepeace	\$2000/month	May 20 - Aug.31	\$8325.00
Dan Whalen	\$1750/month	May 20 - Sept.30	\$8506.70
Wilson Lo	\$1500/month	May 20 - Aug.31	\$6649.50
Tim Whalen	\$1250/month	May 20 - Aug.31	\$5923.00
Mike Bovill	\$1250/month	July 12 - Oct.15	\$4976.90
Pat Hagarty	\$1500/month	Sept.2 - Oct.15	\$2575.80
Len Rae	\$1850/month	May 15 - Sept.30	\$8629.80

TOTAL WAGES \$52,211.20

B. Supplies and Services

Aircraft:	Smithers Air Service	
	Watson Lake Flying Services	
	Columbia Air Lines	
	Northern Mountain Helicopters	
	C.P. Air .....	\$23,341.60
Fuel:	Chevron Oil	
	Takla Trading Post .....	\$5996.19
Drilling Supplies:	West Coast Drilling Supplies	
	J. K. Smit .....	\$8477.57
Food and General Camp Supplies:	Super Valu (Smithers)	
	Takla Trading Post	
	Overwaitee (Prince George)	
	Super Valu (Prince George)	
	Woodwards (Prince George)	
	Sears (Prince George)	
	River Industries (Prince George) .....	\$10,059.01
Communications:	B.C. Telephone .....	\$5175.91
Camp:	(Bunkhouse purchase) .....	\$3050.40

ITEMIZED COST STATEMENT cont.

Automotive: Canuck Truck Rentals  
 Ritchie Bros. Auctioneers  
 Bow Mac Truck Rentals  
 Safari Motors  
 Prince George Motors  
 Schultz Pontiac Buick ..... \$20,675.45

Equipment and Equipment Repairs:  
 B.C. Rentals  
 Ritchie Bros. Auctioneers  
 Finning Tractor (Prince George) ..... \$31,551.56

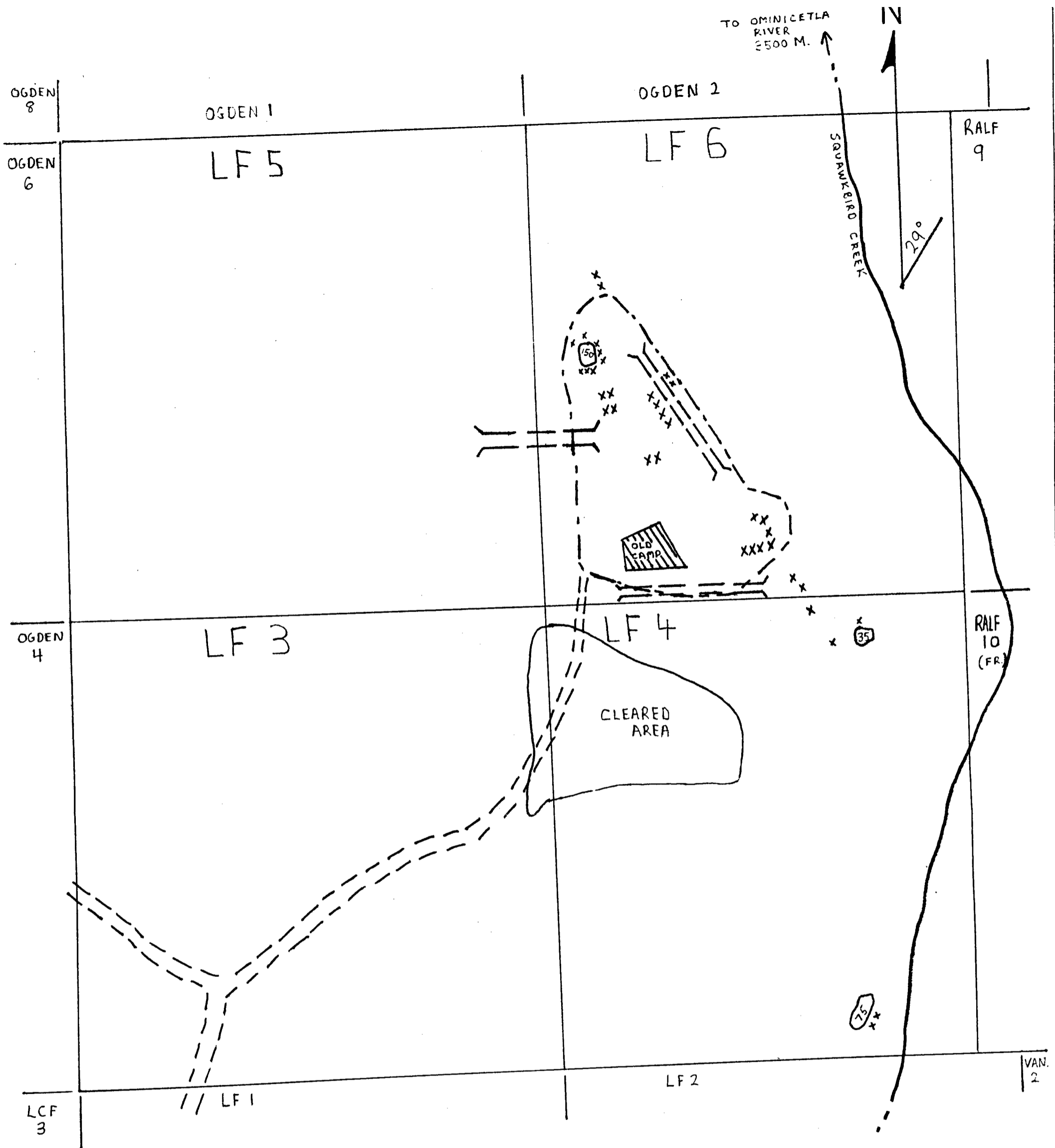
Accommodations: Ester's Inn (Prince George)  
 Grandma's Inn (Prince George) ..... \$2457.21

TOTAL ..... \$110,784.90

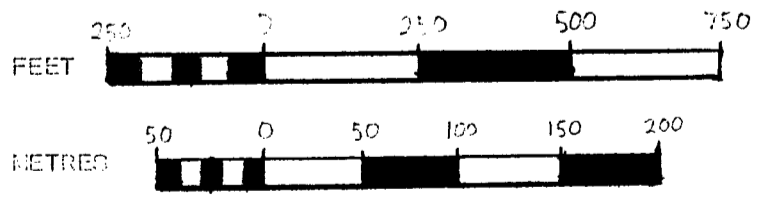
A. WAGES ..... \$52,211.20

B. SUPPLIES and SERVICES ..... \$110,784.90

TOTAL 1980 EXPLORATION COST \$162,996.10



- x Nephrite boulder drilled in 1980
- (40) approx. tonnage of large boulder
- - - - - boundary of pit area where boulders have been assembled for drilling
- --- Trench
- - - - - Cat road
- ..... Outcrop

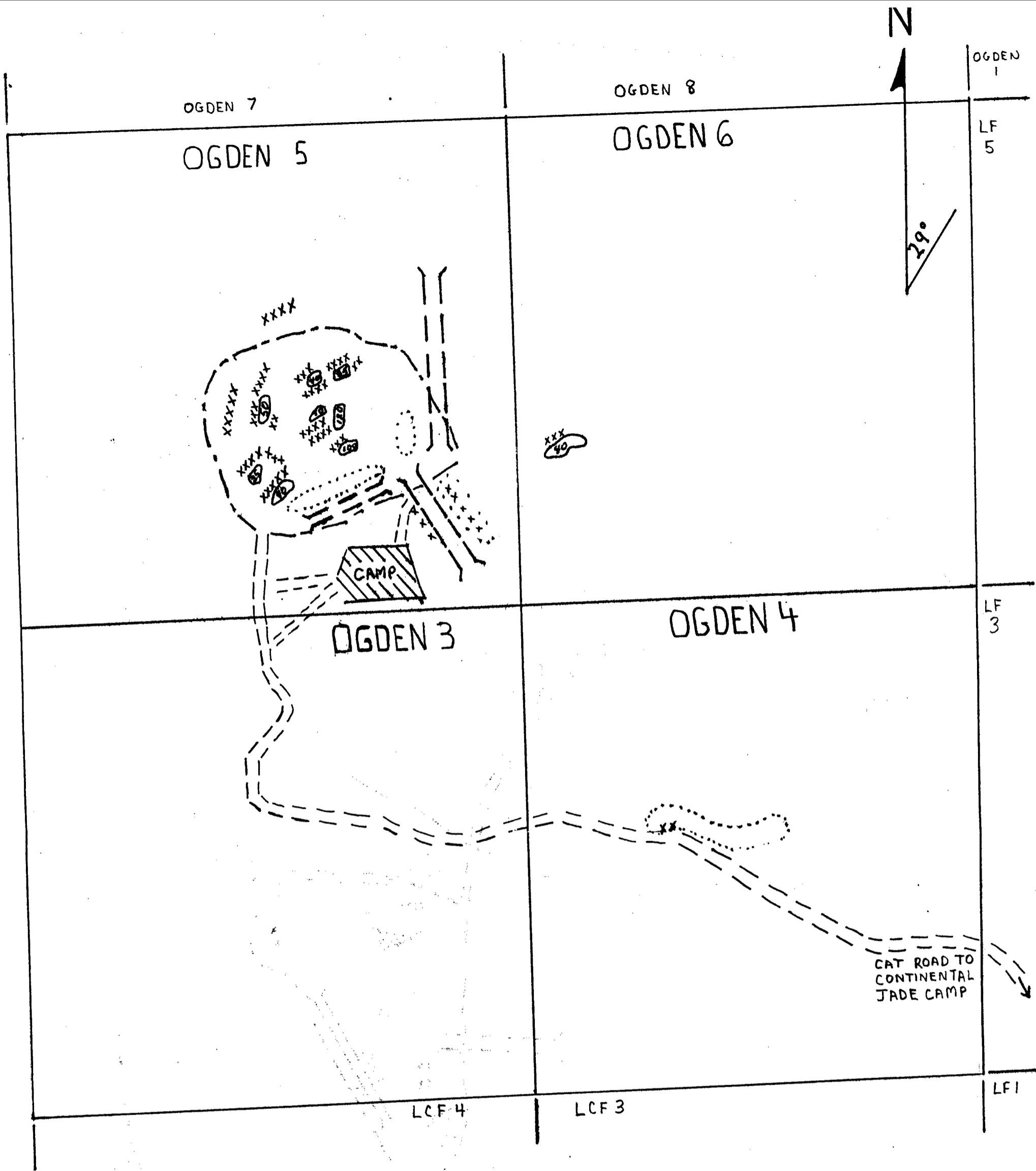


KEYED TO INDEX MAP PAGE -9- NTS Map Sheet M33N/13W

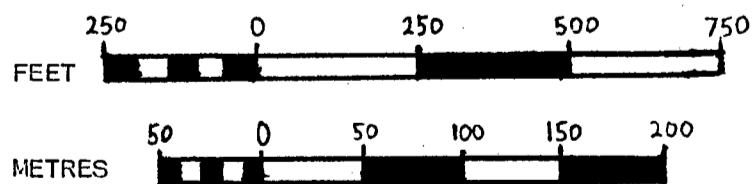
LOCATION OF BOULDERS DRILLED FOR EXPLORATION PURPOSES DURING 1980  
(to accompany Drilling Report 81#614)

MINERAL RESEARCH BRANCH  
AGRICULTURE CANADA  
**9594**  
NO.

FIG. 2



- x Nephrite boulder drilled in 1980
- (40) approx. tonnage of large boulder
- boundary of pit area where boulders have been assembled for drilling
- Trench
- Cat road
- Outcrop



KEYED TO INDEX MAP PAGE -9- NTS Map Sheet M93N/13W

LOCATION OF BOULDERS DRILLED FOR EXPLORATION PURPOSES DURING 1980  
 (to accompany Drilling Report 81#614)

FIG. 1

