

ASSESSMENT REPORT

TYPE: GEOPHYSICAL, GEOCHEMICAL AND
DIAMOND DRILLING
CLAIMS: CH-11, -12, -13, -16, -17,
-18, -19
MINING DIVISION: KAMLOOPS
NTS LOCATION: 92P/8E, 82M/5W
LATITUDE: 51°20'
LONGITUDE: 120°00'
OWNER: CRAIGMONT MINES LIMITED
OPERATOR: " " "
AUTHOR: N.B. VOLLO, P.ENG.
DATE: SEPT. 28th, 1981

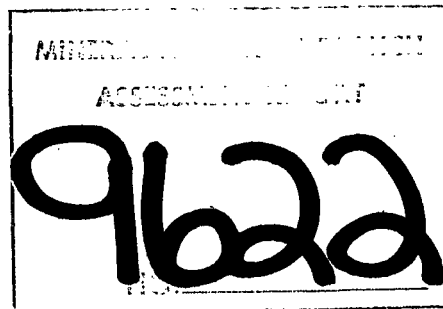


TABLE OF CONTENTS

SUMMARY	1
GENERAL	1
CLAIMS	1
HISTORY AND PREVIOUS WORK	1
GEOLOGY	1
VLF-EM SURVEY	1
MAGNETIC SURVEY	2
GEOCHEMICAL SURVEY	2
DIAMOND DRILLING	2
CONCLUSIONS AND RECOMMENDATIONS	2
STATEMENT OF EXPENDITURES	3
QUALIFICATIONS OF OPERATORS	4
LOCATION MAP	5
DIAMOND DRILL LOG, CH-4	6
<u>IN POCKET</u>	
EM-16 SURVEY - 92P/8 CH-1	
MAGNETIC SURVEY - 92P/8 CH-2	
GEOCHEMICAL SURVEY, Ag Cu - 92P/8 CH-3	
" " Pb Zn - 92P/8 CH-4	
TOPOGRAPHIC MAP, SOUTH SHEET - 92P/8 CH-11	

SUMMARY

Approximately 20 km of grid was blazed and chained, VLF-EM and magnetic surveys completed, 452 soil samples collected and one BQ diamond drill hole drilled to 114 m on the CH Group, located about 20 km northeast of Barriere. Several strong EM conductors were defined and one, with an associated soil Cu anomaly drilled. No mineralization was located.

GENERAL

The CH group is located on the Chinook Hills plateau northeast of Barriere and accessible via either the New Hykulston or Birk Creek logging roads. Approximately half of the property is logged off on a checkerboard pattern. Elevation ranges from about 900 to 1900 m above sea level.

CLAIMS

The property consists of 20 claims, CH-1-13, CH-15 to 21, record numbers 1461(10)-1473(10), 1475(10), 1476(10) and 3130(12) to 3134(12), totalling 320 units. All are in the Kamloops M.D. and held by Craigmont Mines Limited.

HISTORY AND PREVIOUS WORK

A Dighem II airborne survey was completed in 1979 and filed as an Assessment Report by D.C. Fraser and Z. Dvorak, for Craigmont Mines Limited.

GEOLOGY

The group is underlain successively from east to west by black shales of the Sicamous formation, acid volcanic rocks of the Eagle Bay formation and basalts and tuffites of the Fennell formation. The succession forms the east limb of a northerly plunging syncline.

VLF-EM SURVEY

Airborne conductors were plotted on 1:5000 topographic maps prepared by Pacific Survey Corporation and VLF surveys were then done to define the conductors accurately on the ground. Readings were taken at 25 m intervals along lines 200 m apart using a Ronka EM-16 unit and NPG, Jim Creek, Washington as transmitter. Readings, in %, were reduced by the Fraser Method and are shown contoured on the accompanying map (in pocket). Several conductors were defined, correlating closely with the airborne data.

MAGNETIC SURVEY

A magnetic survey was done in conjunction with the VLF survey with readings taken at 25 m intervals using a Geometrics G-836 Total Field magnetometer. These are shown on the accompanying map (in pocket) and are field readings less 57,000 gammas. Correction for diurnal variation was made by looping traverses and correcting back to substations established along base lines.

Magnetic relief is extremely low.

GEOCHEMICAL SURVEY

452 soil samples were collected at 50 m intervals over electromagnetically anomalous portions of the grid and at 25 m intervals along roads or base lines parallel to and directly downslope from conductors. They were taken from the "B" soil horizon using Pulaskis or soil augers, placed in Kraft paper envelopes and sent to Kamloops Research & Assay Laboratories. They were there dried, screened and the -80 mesh fraction analyzed for Cu, Zn, Pb and Ag using hot aqua regia extraction and the Atomic Absorption method. Analysis are shown plotted on accompanying maps (in pocket).

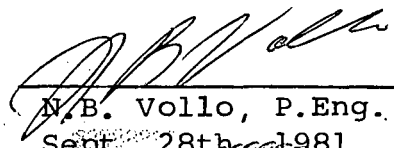
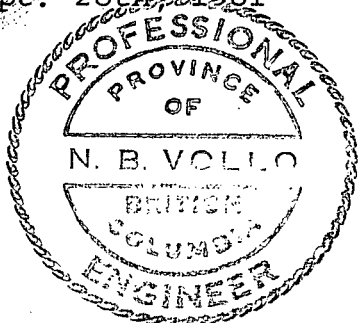
No significant metal anomalies are present except for a small area on line 9800N, 18700E. Several high copper analysis were also obtained in 25m check samples taken here.

DIAMOND DRILLING

One hole was drilled to a depth of 114.5 m to test a strong conductor with an associated Cu soil anomaly. Graphitic tuffite breccia, altered basalt with no significant mineralization, were intersected. Core is stored at the camp on Chu Chua Mountain.

CONCLUSIONS AND RECOMMENDATIONS

The conductors have little associated geochemical response and no magnetic response. They appear to be due to graphitic tuffites and the upper part of the Sicamous formation.


N.B. Vollo, P.Eng.
Sept. 28th, 1981


STATEMENT OF EXPENDITURES

PERSONNEL

N.B. Vollo, P.Eng., supervision, check
surveys, core logging, report, June 18th-
Sept. 28th, 10 days at \$250 ----- \$ 2500

L. Loranger, supervision, magnetic survey,
draughting, June 30-Sept. 29, 24 days at
\$150 ----- 3600

D. Ivanco, EM Survey, sample collection,
June 30th-July 13th, 10 days at \$84 ----- 840

L. Ross, sample collection, chaining,
June 30th - July 13th, 10 days at \$72 ---- 720

Subtotal \$ 7660

TOPOGRAPHIC MAP - Pacific Survey Corporation ----- \$ 2100

GEOCHEMICAL ANALYSIS - 452 samples for Cu Zn Pb Ag
at \$4.37/sample; Kamloops Research & Assay Labor-
atories Ltd. ----- \$ 1974

VEHICLE EXPENSE - 1440 km at 30¢, ----- 432

CAMP EXPENSE, PRINTING, MISC., ----- 544

Sub total \$12710

APPORTIONED TO:

CH-13, -16, -18, -19 ----- \$ 6000

CH-12, -17 ----- 3810

CH-11 ----- 2900

DIAMOND DRILLING - 114.5 m at \$59/m ----- 6755

Mob & demob ----- 600

Subtotal (CH-11) 10255

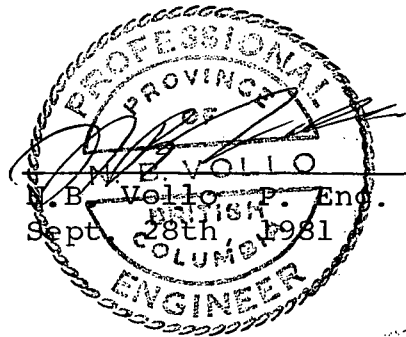
Double G Diamond Drilling Ltd.
RR#2, Williams Lake, B.C. V2G 2P2

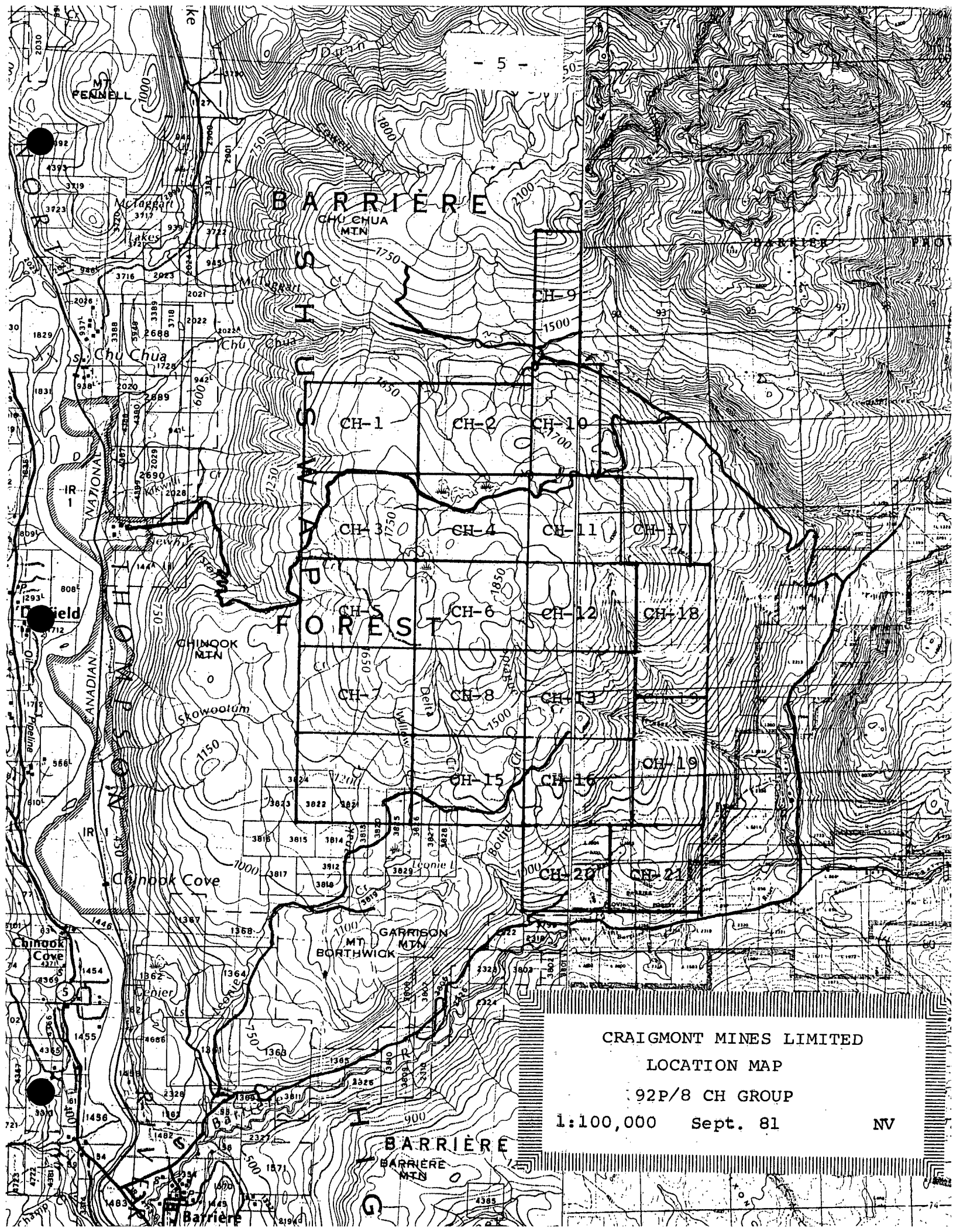
TOTAL \$20065

QUALIFICATIONS OF OPERATORS

LEO LORANGER - is 52 years of age and has worked as a fieldman and instrument operator since 1960; for Craigmont Mines limited since 1972. He has been carefully instructed in the operation of the Geometrics G-836 Magnetometer by the undersigned, who knows his work to be carefully and reliably done.

DOUGLAS IVANCO - is 26 years of age, completed Grade XII at Kamloops. He has been instructed in the operation of the Ronka EM-16 unit by the undersigned, who knows his work to be carefully and reliably done.





BARRIERE

FOREST

BARRIERE

CRAIGMONT MINES LIMITED

LOCATION MAP

92P/8 CH GROUP

1:100,000 Sept. 81

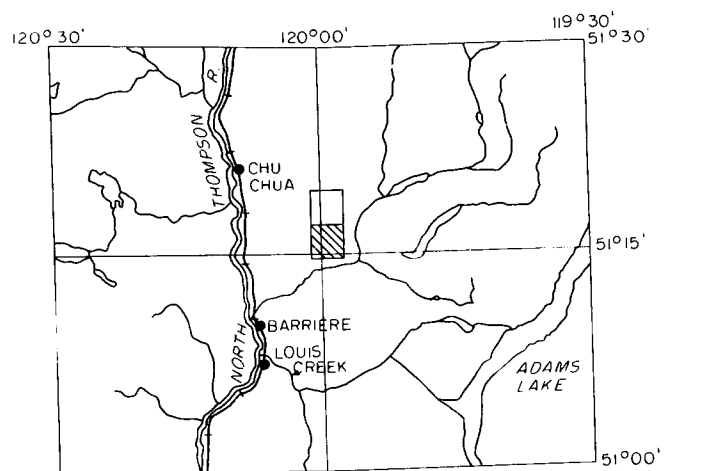
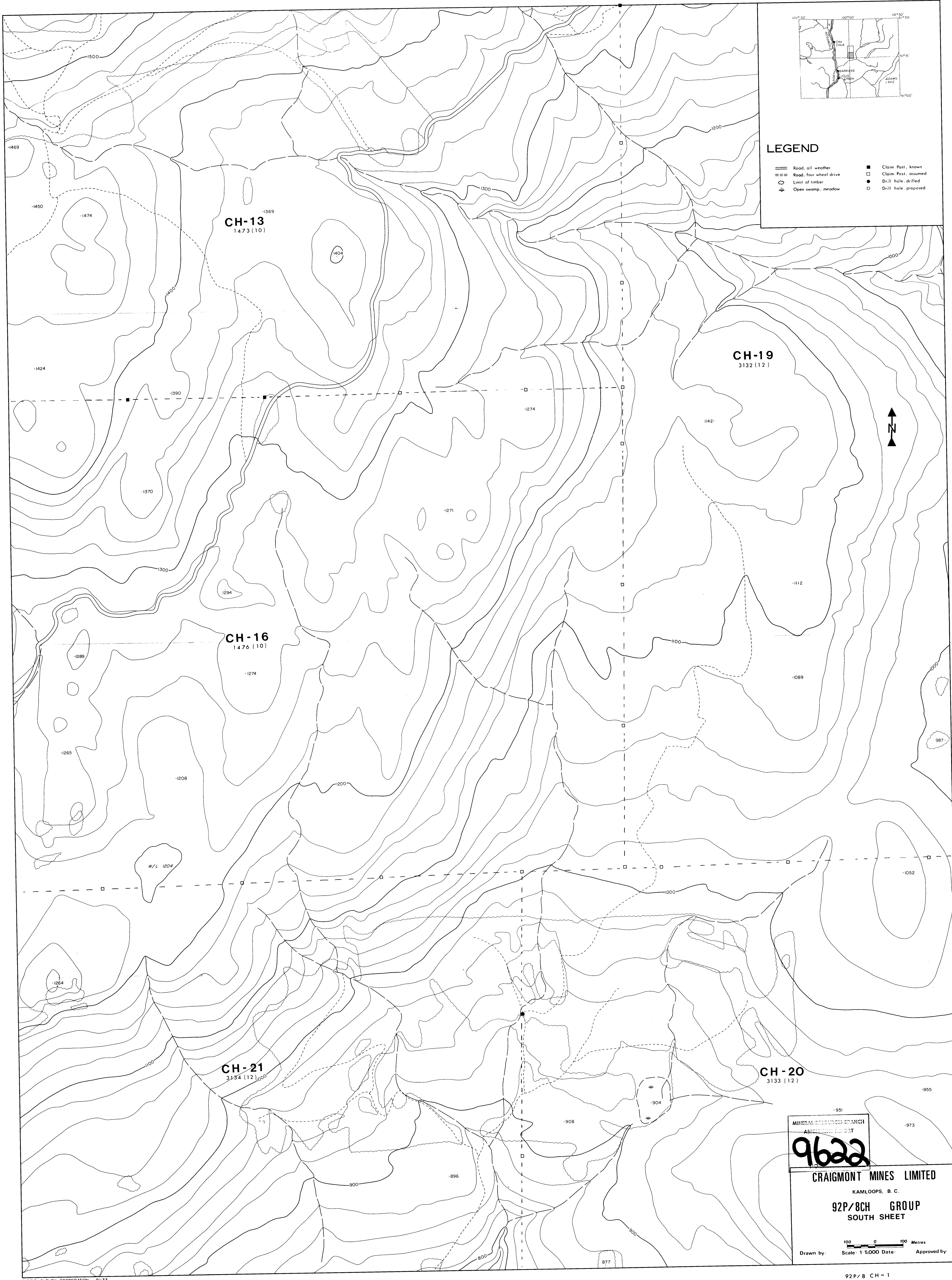
NV

DIAMOND DRILL CORE LOG -- SAMPLE RECORD

DEPTH	DIP	BEARING AST.
COLLAR	-50°	090°

PROPERTY 92P/8CH CLAIM CH11 HOLE NO. CH4
 LATITUDE _____ STARTED Sept 19/81 CORE SIZE BH
 DEPARTURE _____ FINISHED Sept 24/81 SECTION 9800 N
 ELEVATION 1742 TOTAL LENGTH 114.5 18550 E
 LOGGED BY N.B. W/H

DEPTH	DESCRIPTION	MINERALIZATION	SAMPLE	FROM	TO	m	Cu%	Zn%	Pb%	Au ppm	Ag ppm
0.0	Casey										
10.0	Black Tuffite - Black, graphitic, bedded 45° with short fragmental and breccia sections Rounded 2 cm py fragment at 12.1 14.0 - lost core - triconed - probably cherty tuffite - water reported black. 20.0 - black, cherty, badly broken 10 cm gouge to	2-5% rel cse py along bedding									
21.0	Basalt? - pale grey green, strongly bleached and leached. 21.5 lost core 23.0 - as before, becoming more green, strongly silicified - fine pink leucoxene throughout Broken core to										



LEGEND

—	Road, all weather	■	Claim Post, known
— — —	Road, four wheel drive	□	Claim Post, assumed
- - - -	Limit of timber	●	Drill hole, drilled
⋯	Open swamp, meadow	○	Drill hole, proposed

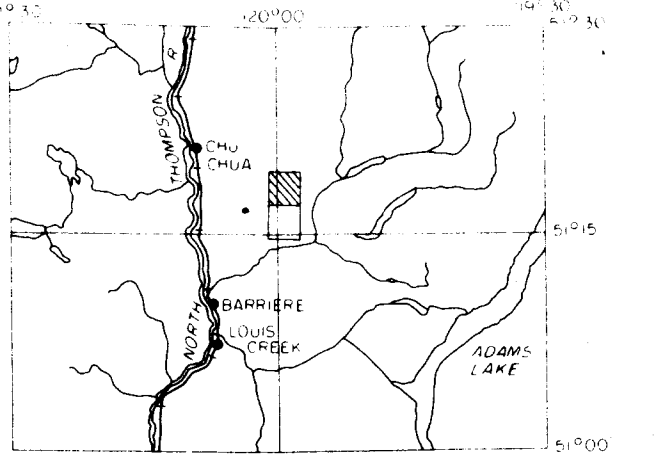
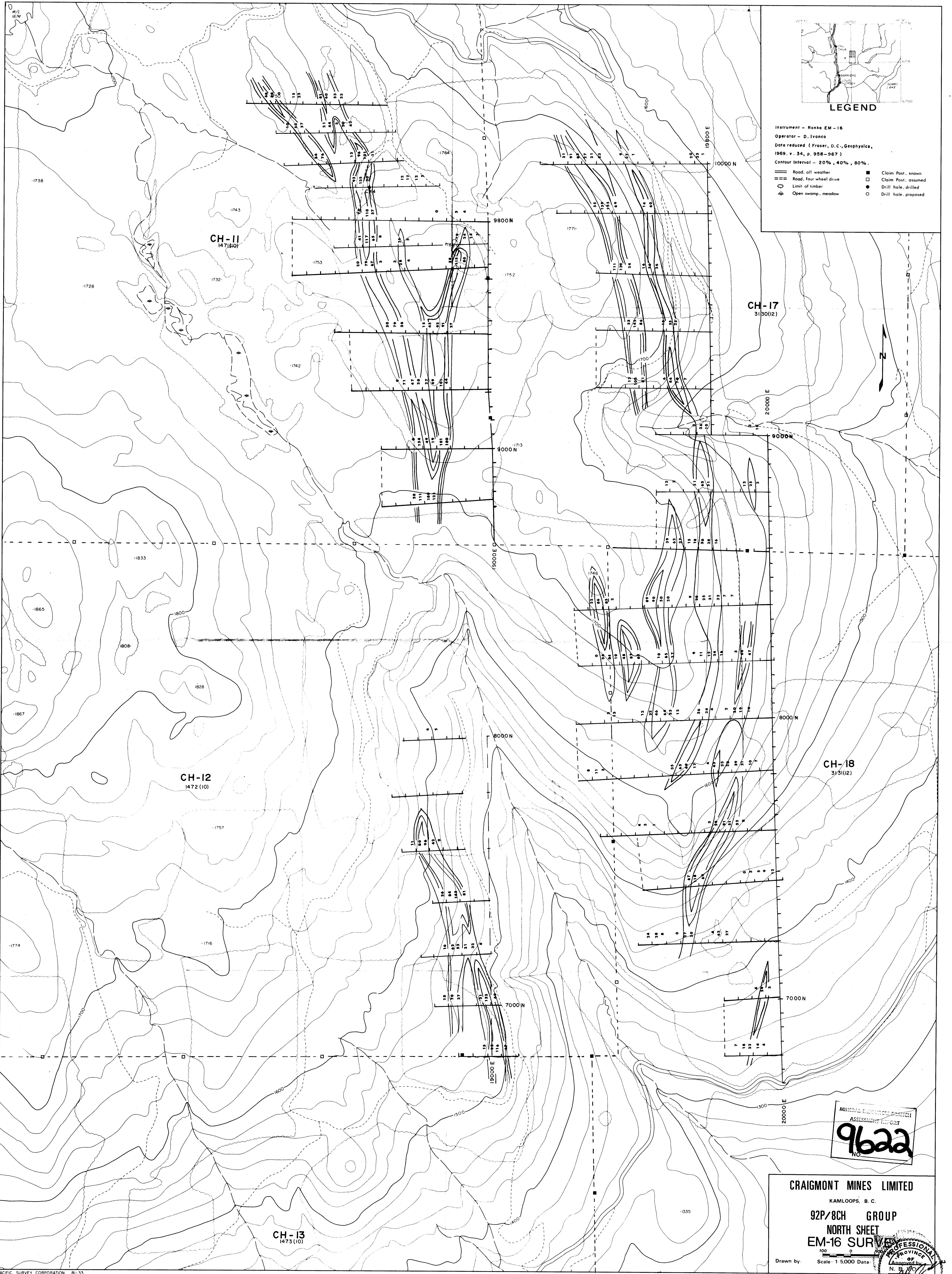
MINERAL RESOURCES BRANCH
ASSESSMENT REPORT

9622

CRAIGMONT MINES LIMITED
KAMLOOPS, B. C.

92P/8CH GROUP
SOUTH SHEET

Scale: 1:5,000 Date: Approved by:



LEGEND

- Instrument - Ronko EM-16
- Operator - D. Ivanko
- Data reduced (Fraser, D.C., Geophysics, 1969, v. 34, p. 958-967)
- Contour Interval - 20%, 40%, 80%
- Road, all weather
- Road, four wheel drive
- Limit of timber
- ⊕ Open swamp, meadow
- Claim Post, known
- Claim Post, assumed
- Drill hole, drilled
- Drill hole, proposed

CH-11
1471(10)

CH-17
3130(12)

CH-12
1472(10)

CH-18
3131(12)

CH-13
1473(10)

MINERAL REVENUE BRANCH
ASSESSMENT REPORT
9622
NO.

CRAIGMONT MINES LIMITED

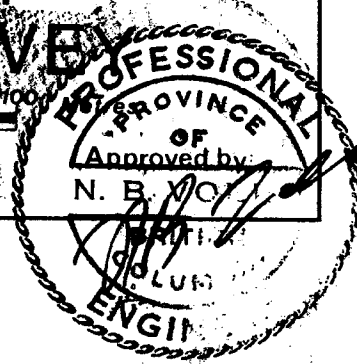
KAMLOOPS, B. C.

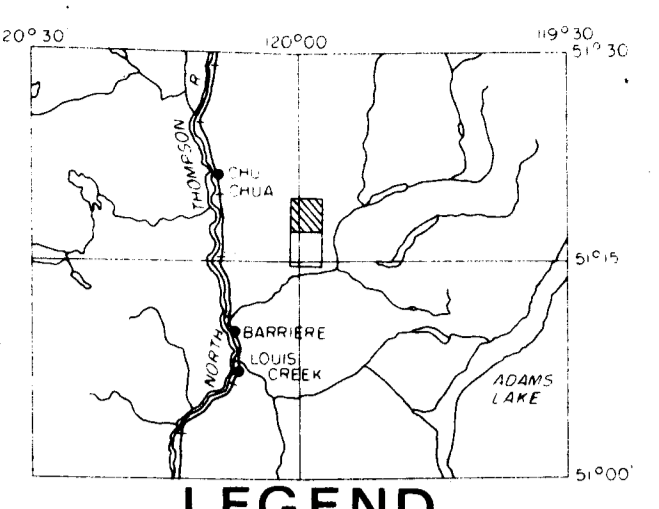
92P/8CH GROUP

NORTH SHEET

EM-16 SURVEY

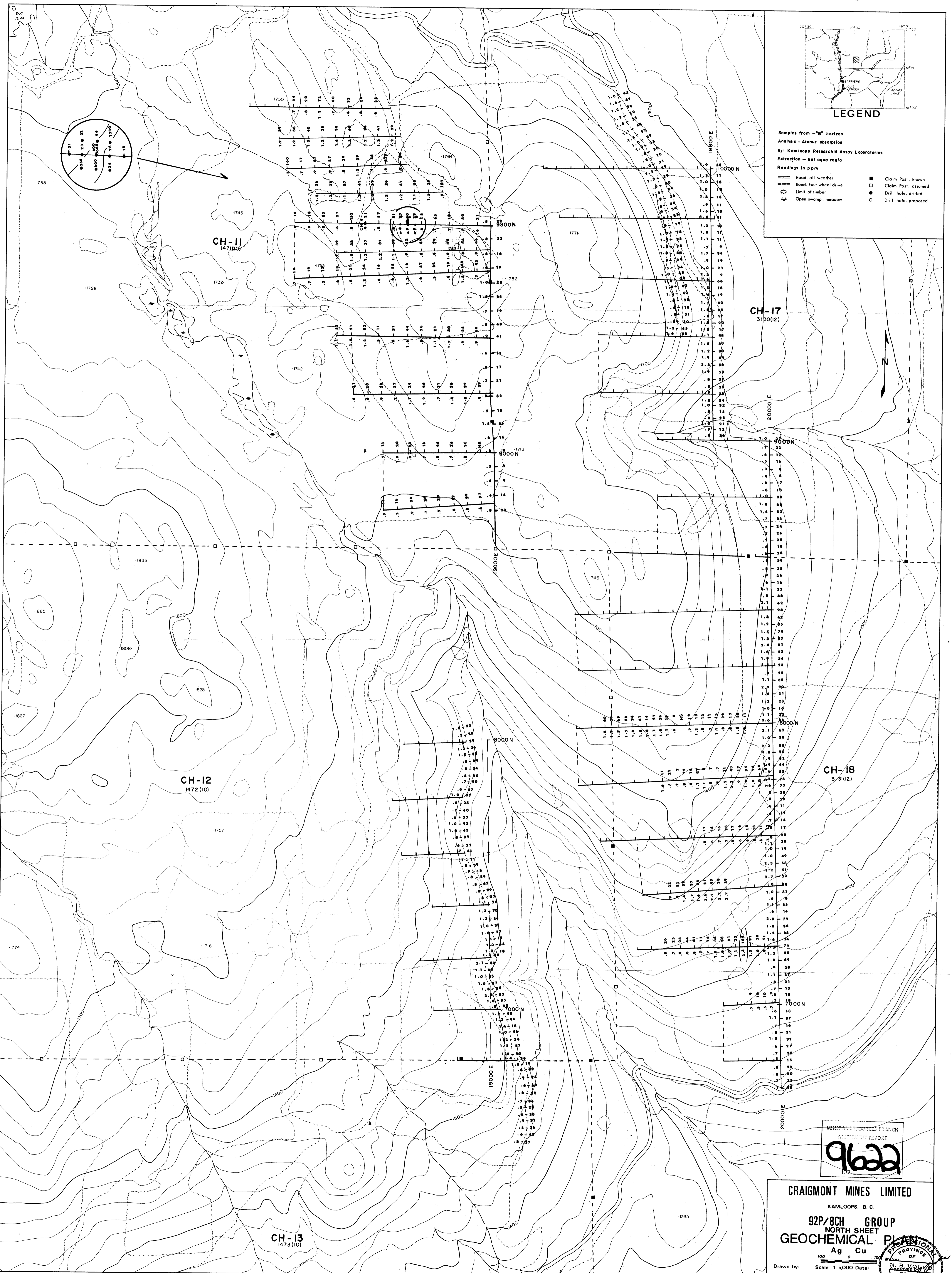
Drawn by: Scale 1:5000 Date:





LEGEND

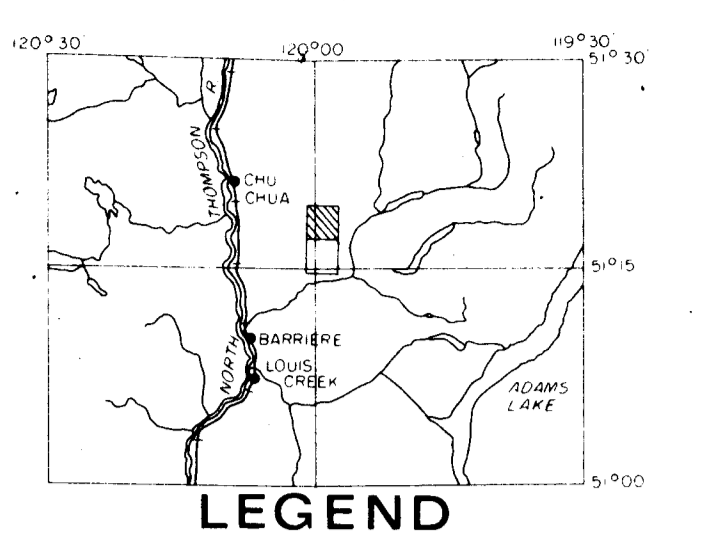
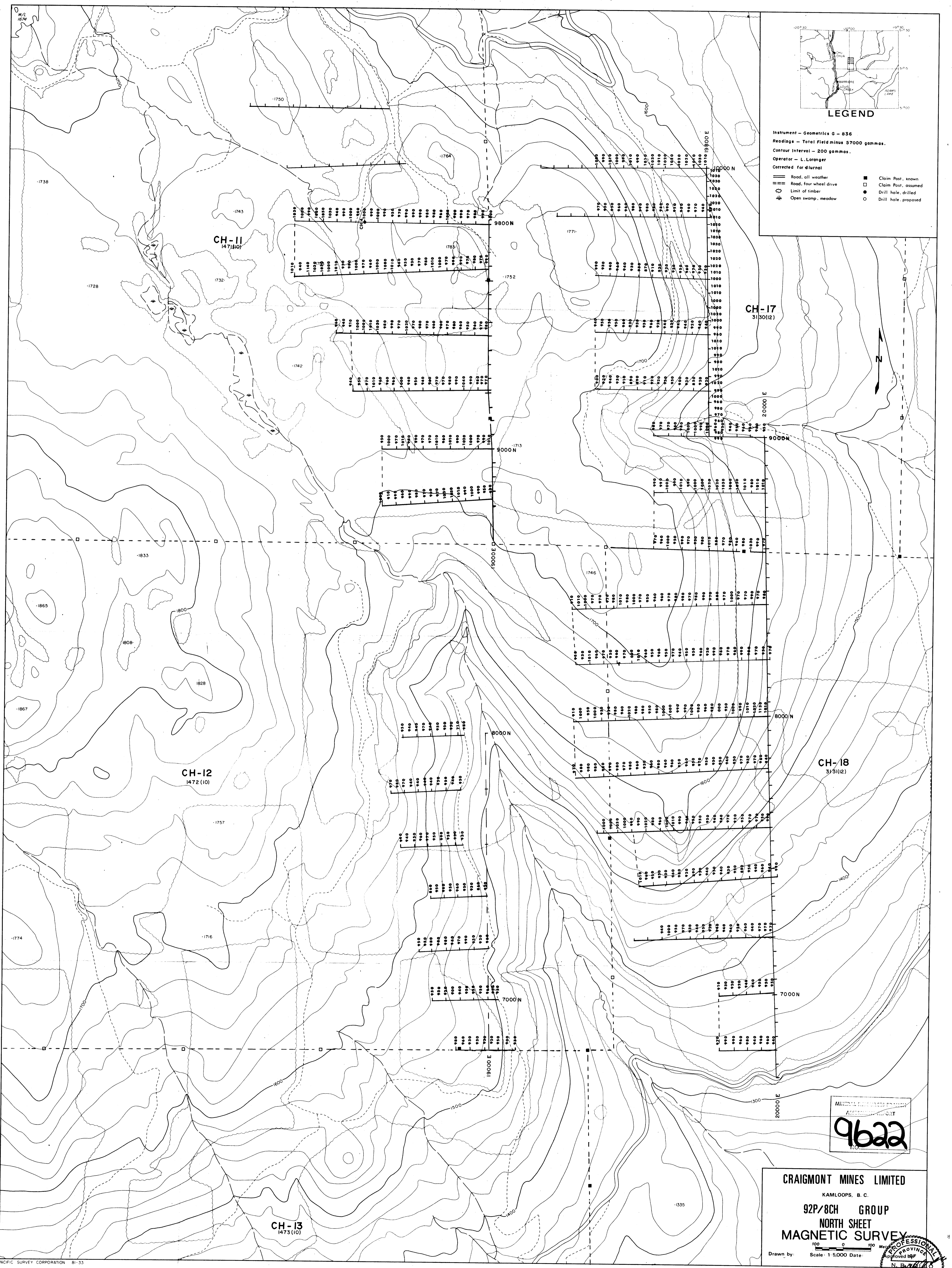
- Samples from "B" horizon
 Analysis - Atomic absorption
 By: Kamloops Research & Assay Laboratories
 Extraction - net aqua regia
 Readings in ppm
- Road, all weather
 - Road, four wheel drive
 - Limit of timber
 - ☼ Open swamp, meadow
 - Claim Post, known
 - Claim Post, assumed
 - Drill hole, drilled
 - Drill hole, proposed



MINERAL RESOURCES BRANCH
 MINISTRY REPORT
9622

CRAIGMONT MINES LIMITED
 KAMLOOPS, B. C.
92P/BCH GROUP
 NORTH SHEET
GEOCHEMICAL PLAN
 Ag Cu

Drawn by: **N. B. VORLEY**
 Scale: 1:5,000 Date: **1974**
PROFESSIONAL ENGINEER



LEGEND

Instrument - Geometrics G - 836
 Readings - Total Field minus 57000 gammas.
 Contour Interval - 200 gammas.
 Operator - L. Loranger
 Corrected for diurnal

—	Road, all weather	■	Claim Post, known
—	Road, four wheel drive	□	Claim Post, assumed
⊖	Limit of timber	○	Drill hole, drilled
⊕	Open swamp, meadow	○	Drill hole, proposed

CH-11
1471(10)

CH-17
3130(12)

CH-12
1472(10)

CH-18
3131(12)

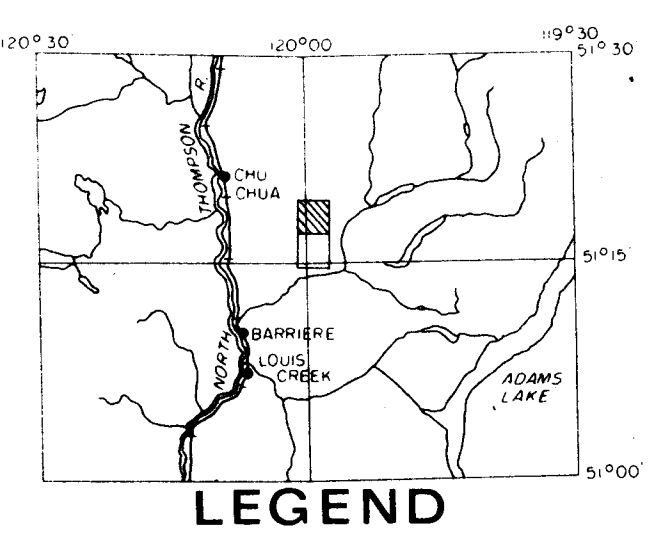
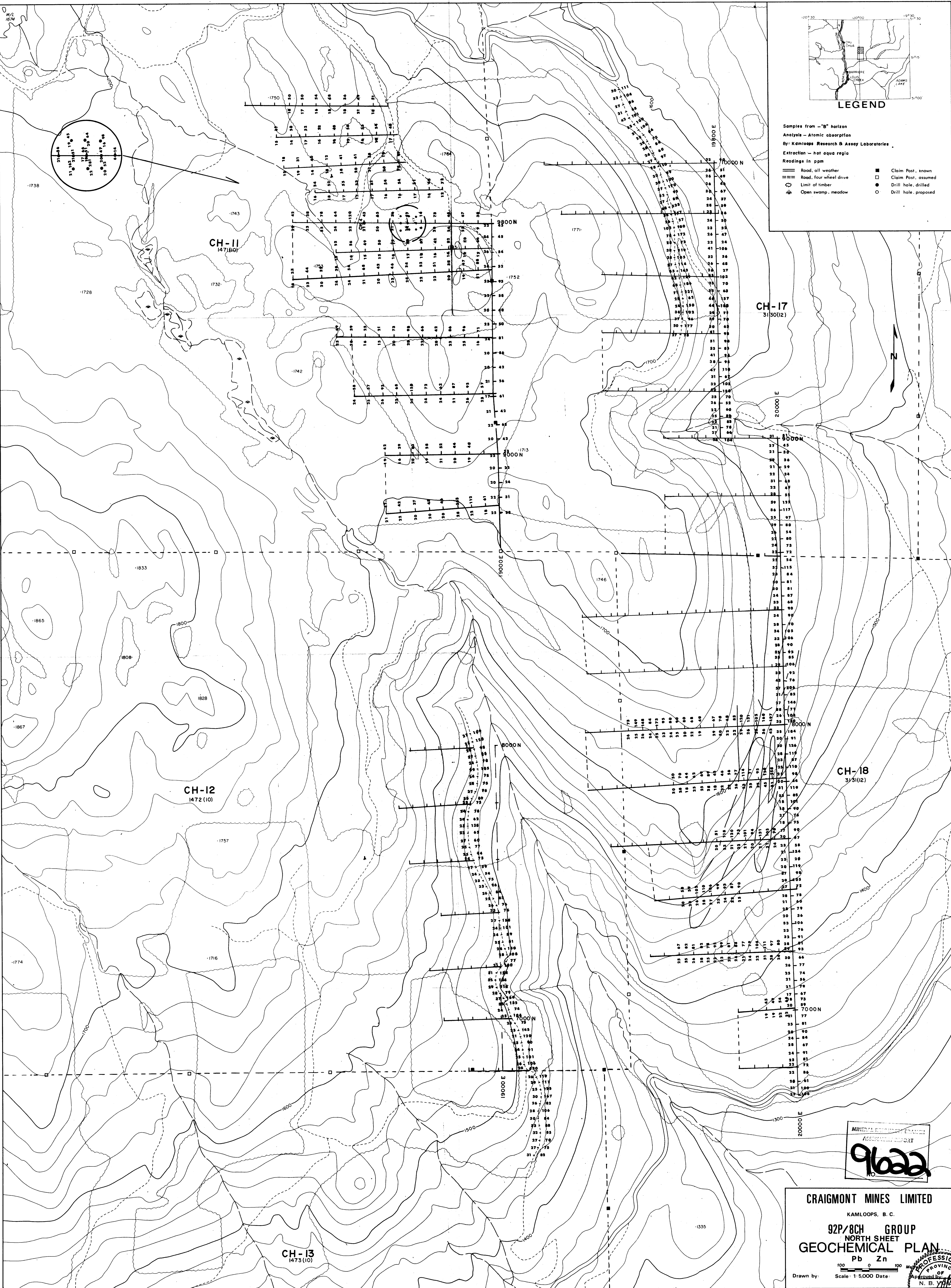
CH-13
1473(10)

MINERAL INVESTIGATION BOARD
 ASSESSMENT
9622

CRAIGMONT MINES LIMITED
 KAMLOOPS, B. C.
92P/8CH GROUP
NORTH SHEET
MAGNETIC SURVEY

Scale: 1:5000 Date: _____
 Drawn by: _____

PROFESSIONAL
 REGISTERED
 GEOPHYSICIST
 N. B. [Signature]
 COLUMBIA
 BRITISH COLUMBIA



LEGEND

- Samples from - "B" horizon
 Analysis - Atomic absorption
 By: Kamloops Research & Assay Laboratories
 Extraction - hot aqua regia
 Readings in ppm
- | | |
|--------------------------|------------------------|
| — Road, all weather | ■ Claim Post, known |
| — Road, four wheel drive | □ Claim Post, assumed |
| --- Limit of timber | ○ Drill hole, drilled |
| ⊕ Open swamp, meadow | ○ Drill hole, proposed |

CH-11
1471(10)

CH-17
3150(12)

CH-12
1472(10)

CH-18
3151(12)

CH-13
1473(10)

MINERAL ENGINEER'S EXAMINER
 ASSOCIATION REPORT
9622

CRAIGMONT MINES LIMITED
KAMLOOPS, B. C.

92P/8CH GROUP
NORTH SHEET
GEOCHEMICAL PLAN
Pb Zn

Scale: 1:5,000 Date: _____

