

ASSESSMENT REPORT

TYPE: DIAMOND DRILLING
CLAIMS: CC-1
MINING DIVISION: KAMLOOPS
NTS LOCATION: 92P/8 E
LATITUDE: 51°23'
LONGITUDE: 120°04'
OWNER: CRAIGMONT MINES LIMITED
OPERATOR: SAME
AUTHOR: N.B.VOLLO, P.ENG.
DATE: OCT, 20th, 1981

MINERAL RESOURCES BRANCH
ASSESSMENT REPORT

9623

TABLE OF CONTENTS

LOCATION AND ACCESS	1
CLAIMS	1
HISTORY AND PREVIOUS WORK	1
GEOLOGY	1
DRILL PROGRAM AND CORE	
STORAGE	1
QUALIFICATIONS	1
STATEMENT OF EXPENDITURES	2
LOCATION MAP	3
DRILL PLAN	4
CORE LOG, CC-45	5

LOCATION AND ACCESS

The CC Group is located on Chu CHua Mountain, about 20 km north of Barriere, and is readily accessible from the Birk Creek logging road by four wheel drive vehicles.

CLAIMS

The property consists of the CC-1 to 11 mineral claims, totalling 150 units, record nos. 1154, 1373, 1374, 1424, 1428 and 1455 to 1460 inc. All are in the Kamloops M.D. and held by Craigmont Mines Limited.

HISTORY AND PREVIOUS WORK

A massive sulfide deposit was discovered on the CC-1 claim in 1978 as a result of drilling a small gossan and magnetite showing. Subsequently a deposit containing approximately 2,000,000 tonnes grading 2% Cu was outlined by 6172 m of diamond drilling.

GEOLOGY

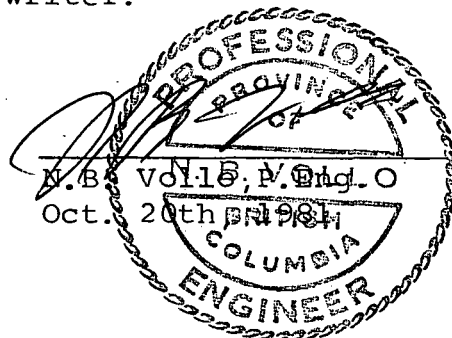
The deposit forms part of a siliceous tuffite unit conformably within pillowed and massive basalts of the Fennell formation. The sulfides form two or more beds separated by magnetite and talc units, or by tuffite. The zone strikes south, dips steeply west and appears to plunge south at about 45°.

DRILL PROGRAM AND CORE STORAGE

One hole, totalling 319 m, was drilled to explore the zone down dip. Tuffite with minor chalcopyrite was intersected on projection. Core is stored on the property.

QUALIFICATIONS

Core was logged by the writer.

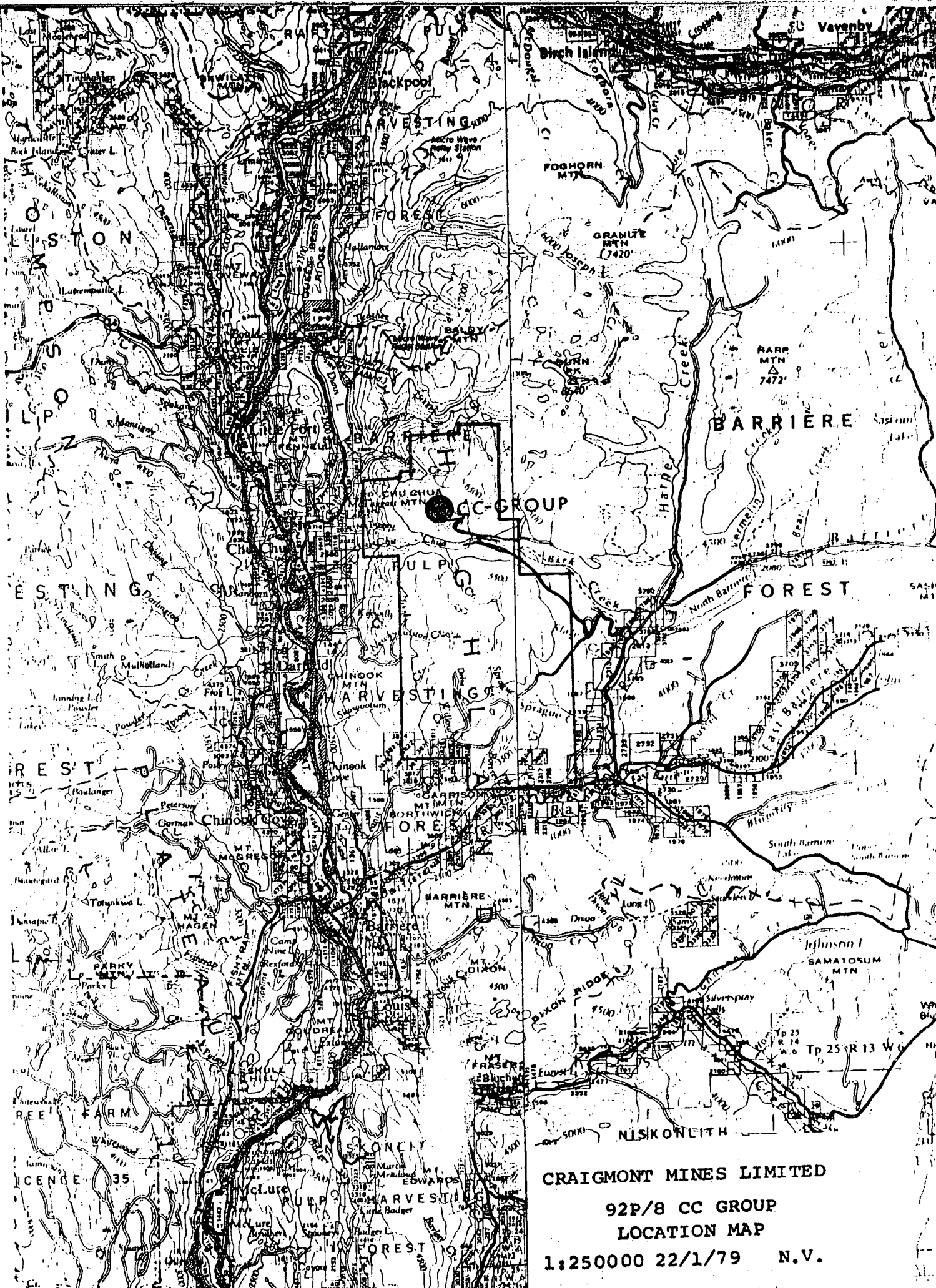


STATEMENT OF EXPENDITURES

Diamond Drilling, 319 m at \$59/m -----	\$18,821.00
Moving and set up, 19 hrs. at \$22.50 -----	427.50
Cementing & reaming, 7 hrs at \$35.00 -----	245.00
Casing & shoe left in hole -----	324.55
	<hr/>
Total	\$19,818.05

Contractor

Double G Diamond Drilling Ltd.
Box 21, Glencairn Park,
WILLIAMS LAKE, B.C. V2G 2P2



CRAIGMONT MINES LIMITED
92P/8 CC GROUP
LOCATION MAP
1:250000 22/1/79 N.V.

1800

102 00

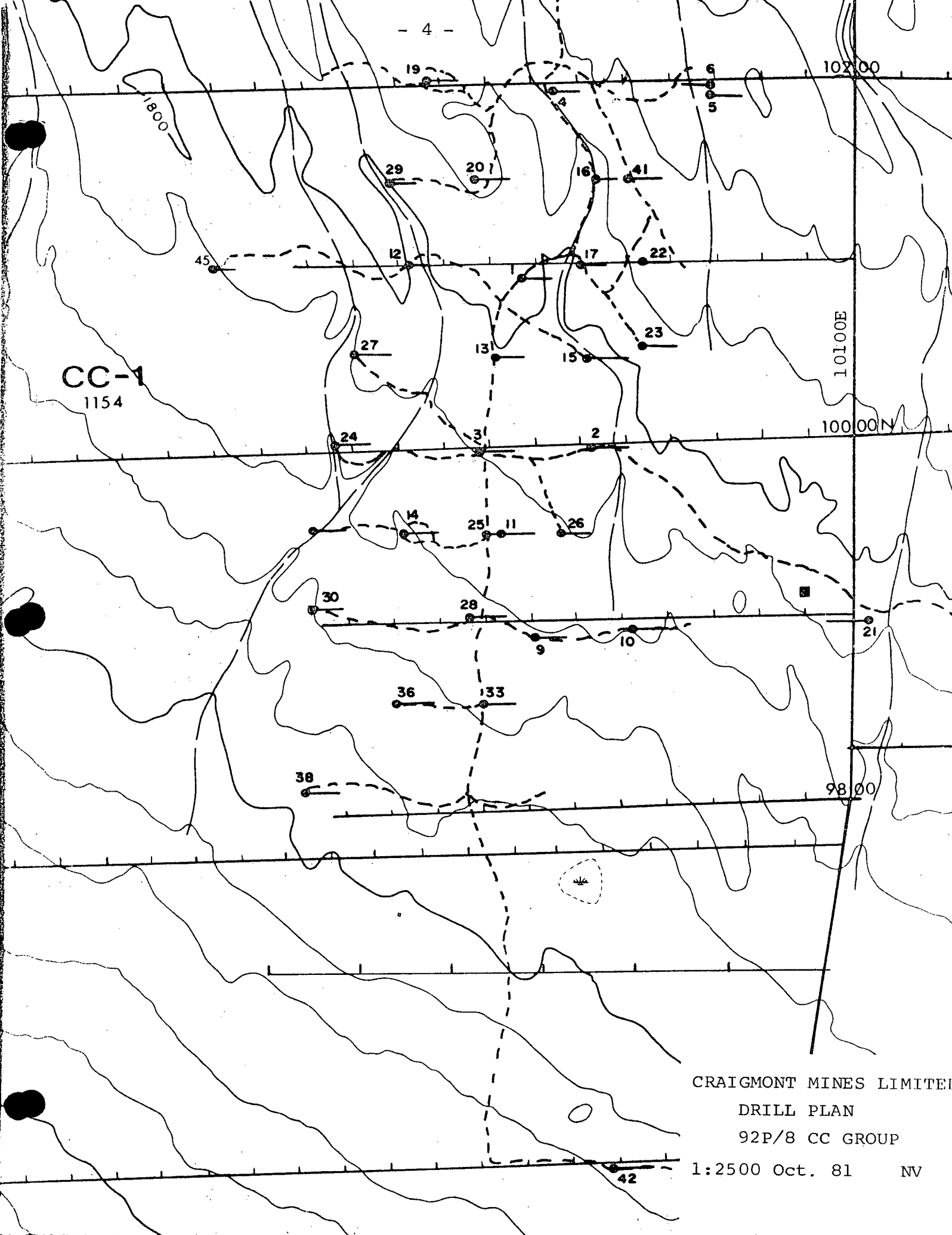
10100E

100 00N

98 00

CC-1
1154

CRAIGMONT MINES LIMITED
DRILL PLAN
92P/8 CC GROUP
1:2500 Oct. 81 NV



DIAMOND DRILL CORE LOG - SAMPLE RECORD

DEPTH	DIP	BEARING AST.
COLLAR	-55°	090°
100	-54°	-
200	-55°	-
300	-55°	-

PROPERTY 72 P/P CC CLAIM CC-1 HOLE NO. CC-95
 LATITUDE STARTED Sept 28/81 CORE SIZE BQ
 DEPARTURE FINISHED Oct 10/81 SECTION 10100N
 ELEVATION ~1789 TOTAL LENGTH 3190 9750F
 LOGGED BY N.S. Will.

DEPTH	DESCRIPTION	MINERALIZATION	SAMPLE	FROM	TO	m	Cu%	Zn%	Pb%	Au ppm	Ag ppm
0.0	Casing										
5.0	Basalt (previous, called Dacite)										
	Pale grey green, fine grained, somewhat fractured and rusty										
	14.0 - same, fresh, very hard, with numerous distinct pillow selvages - chilled 55° contact to	Mine P ₀ throughout									
	113.5 - massive, darker green, slightly coarser grained										
	119.3 - becomes fine, pillared - chilled against preceding - top down hole or east										
	Numerous pillow selvages broken core to										
280.2	Tuffite										
	Pale buff to cream colored, very well bedded 50° - mostly calc silicate minerals	Tl P ₁	5900	280.2	2824.22						
	Sharp 65° contact to										

DIAMOND DRILL CORE LOG -- SAMPLE RECORD

 PROPERTY 92/8CC

 HOLE No. CC-45

 SHEET No. 3 of 3

DEPTH	DESCRIPTION	MINERALIZATION	SAMPLE	FROM	TO	m	Cu%	Zn%	Pb%	Au ppm	Ag ppm
294.0	Irregular 30° contact to Basalt - light green - probably a blocky fragmented faced through by irregular calc silicate stringers up to 5 cm wide Broken core to										
297.3	Tuffite Breccia Irregular chert and basalt fragments in a calc silicate matrix Possibly a vein filling Contact very irregular, parallels core to										
301.0	Basalt Green, fine to medium grained, faced by irregular calc silicate veins - there may be feeding for tuffite above No definite pillows - Called Ardite in previous program 315° - becomes gray, lightly carbonatized - stringers										
319.2	FTG										