

9632
NO.

REPORT ON 1980 RECONNAISSANCE

GEOCHEMICAL SAMPLING

MSTTSACHA MINERAL CLAIM

TSACHA MOUNTAIN AREA

OMINECA MINING DIVISION

NTS M93F/2W

LATITUDE $53^{\circ}16^{\prime}3^{\prime\prime}$ N

LONGITUDE $124^{\circ}52^{\prime}$ W

DATES OF WORK: July 14 - September 25, 1980

by Colin Harivel, B.Sc.
K. W. Livingstone, M.Sc.

owner K. W. Livingstone

Contractors JMT Services Corp.

October 26, 1981

TABLE OF CONTENTS

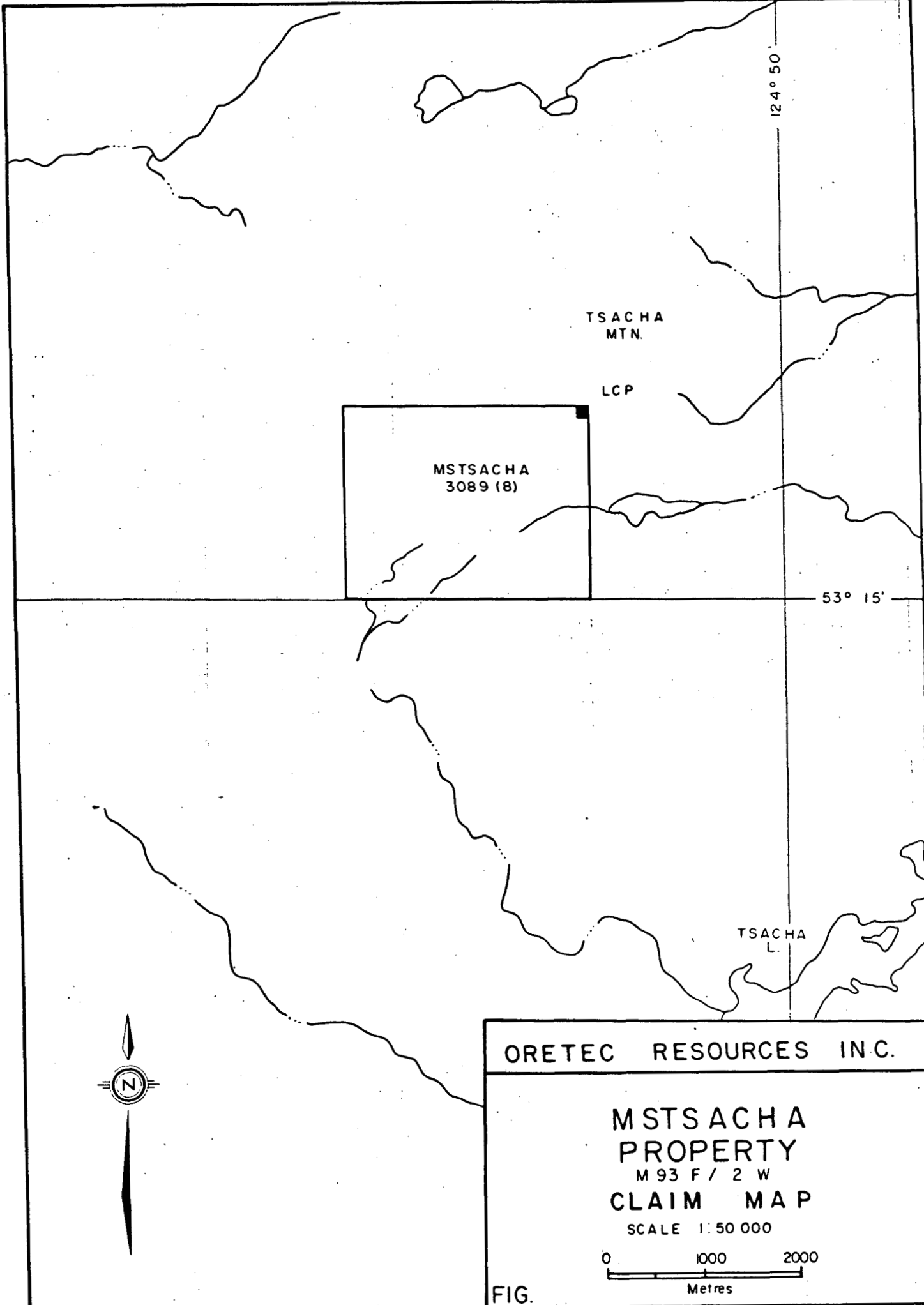
	PAGE
LIST OF ILLUSTRATIONS	i
SUMMARY	1
INTRODUCTION	1
LOCATION AND ACCESS	1
CLAIM	2
REGIONAL GEOLOGY	2
GEOLOGY OF THE PROPERTY	2
GEOCHEMISTRY	2
CONCLUSIONS	2
APPENDIX I	
STATEMENT OF COSTS	3
APPENDIX II	
STATEMENTS OF QUALIFICATIONS	
K. Wayne Livingstone	4
Colin Harivel	5
APPENDIX III	
GEOCHEMICAL METHODS	

LIST OF ILLUSTRATIONS

FIGURE 1	PROPERTY LOCATION MAP	ii
FIGURE 2	CLAIM MAP	iii
FIGURE 3	GEOCHEMISTRY MAPS - Ag	In Pocket
FIGURE 4	- Zn	In Pocket
FIGURE 5	- Cu	In Pocket
FIGURE 6	- Pb	In Pocket



J M T SERVICES CORP.			
MST SACHA			
PROPERTY LOCATION MAP			
SCALE			
Mile 136		136 Mile	
Prepared by:	Date:	NTS MAP AREA	DRAWING No.
Drawn by:	Revised:		



ORETEC RESOURCES INC.

MSTSACHA
PROPERTY
M 93 F / 2 W
CLAIM MAP

SCALE 1:50 000

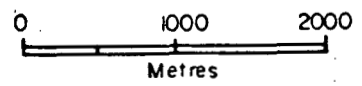


FIG.

SUMMARY

In 1980, a multi-element anomaly was indicated by the results of a reconnaissance stream sediment survey. Subsequent prospecting was encouraging and the area was staked and sampled further.

Geological and geochemical evidence supports the possibility that a volcanogenic massive sulphide deposit exists in the area and further geological mapping and geochemical sampling is recommended.

INTRODUCTION

JMT geologists in July 1980 sampled stream sediments in geologically favourable areas in this region during the course of a programme funded by Prism Resources. Results indicated the Tsacha Mountain area to be of interest; two samples from adjacent streams returned highly anomalous results in copper, silver, zinc, arsenic, manganese and molybdenum.

The area was staked in July and traversed and sampled by JMT geologists. Prism personnel worked on the property in September 1980.

The presence of a jasperoid unit within a sequence of Takla formation rhyolites, together with the widespread anomalous copper and zinc results, cause the area to be of further interest.

Recent exploration for silver deposits in this region has met with favourable results, particularly on "Capoose" property, a few miles to the north west of Tsacha Mountain.

LOCATION AND ACCESS

The Mtsacha property, consisting of the Mtsacha 20 unit claim, is located at an elevation of 1400 metres about 110 kilometres south of Burns Lake in the Omineca Mining Division. It lies about 6 kilometres northwest of Tsacha Lake.

Access is by helicopter from any of Burns Lake, Houston or Prince George all of which support permanent bases for helicopter service companies. A number of suitable landing spots exist on and near the property.

CLAIM

MSTSACHA

RECORD NUMBER 3089

REGIONAL GEOLOGY

The claim area is underlain by mixed volcanics and minor sediments of Takla formation of Jurassic age. The formation is composed of rhyolitic crystal tuffs, volcanic breccias, andesitic lappili, argillites and minor limestone with some granitic dyke-like intrusives. The claim area is near the intersection of several faults in the Takla rocks as mapped by W. H. Tipper on G.S.C. Map 1131A.

GEOLOGY OF THE PROPERTY

The exposures on the property include rhyolite crystal tuffs, breccias, andesitic lappili tuffs, argillite and minor limestone. Minor granodiorite dykes were noted. Associated with the rhyolitic rocks is a manganiferous jasperoid unit.

GEOCHEMISTRY

Reconnaissance silt, soil and rock chip geochemical sampling has outlined a broad anomalous area southwest of "Camp Lake", a lake 1.5 km south of Tsacha Mountain.

The area, about 1500 m in extent is weakly anomalous for copper in stream sediments with values up to 239 ppm. Zinc values are moderately to strongly anomalous with values up to 2060 ppm and lead values are sporadically anomalous ranging up to 182 ppm. Silver values are moderately anomalous ranging to 4.4 ppm.

Soil samples, plotted on Figures - show values returned for Cu, Pb, Zn. Copper values range from 15 ppm to 113 ppm; lead values from 11 to 102 ppm; and zinc values from 31 to 450 ppm.

The large number of anomalous results (Cu 50 ppm, Pb 30 ppm, Zn 100 ppm) suggests that the whole area is of interest and that further detailed sampling is necessary. Initially, sampling should cover the east and southwest flanks of the knob surrounded by the Mstsacha claim. About 13,000 m of sampling lines, 200 m apart, and

samples spaced at 50m intervals, would be sufficient for the next phase of work.

CONCLUSIONS

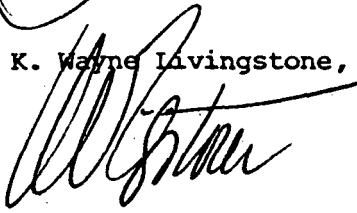
The claim area has geological and geochemical evidence indicating the possible presence of a volcanogenic massive sulphide deposit. Further geological mapping and geochemical sampling is warranted.

About 7 days of mapping and sampling on a scale of 1:5000 should be done. Mapping should concentrate on the manganiferous jasperoid horizon and closely associated rock units. Geochemical sampling should include about 13000m of soil samples lines, spaced about 200 m apart with 50 m between samples. Rock chip samples of most outcrops should be collected and, like the soils, analysed for Zn, Cu, Pb, Ag.

Respectively submitted,



Colin Warivel, B.Sc.,



K. Wayne Livingstone, M.Sc.

STATEMENT OF COSTS

MSTSACHA PROPERTY

PRISM RESOURCES

Geologists - September 24 - 25

G. Cavey

93.79 x 2

\$ 187.58

D. Howe

80.87 x 2

161.74

Driving time: D. Howe

50.54

G. Cavey

58.62

Helicopter - September 24

794.99

September 25

755.00

Geochem

113.25

Truck Rental

106.25

Gas

15.00

Food

113.06

ROY PHENDLER, Consulting Geologists Fee

139.08

JMT SERVICES

Geologists: K. W. Livingstone - July 18 - 21 4 days \$ 175.00

700.00

Colin Harivel - July 18 - 21 4 days \$ 175.00

700.00

Truck Rental

250.00

Radio telephone

15.00

Helicopter

2,400.00

Geochem

479.10

Freight

75.00

Motel (Portion)

28.73

Airfare (Portion) 64.80 x 2

129.60

Supplies "

45.15

Meals "

203.33

Report "


1,500.00

 \$6,525.89

STATEMENT OF QUALIFICATIONS

I, Colin Harivel, of Vancouver, British Columbia, do hereby certify that:

1. I am a geologist residing at 3996 West 10th Avenue
Vancouver, British Columbia
2. I am a graduate of the University of British Columbia;
B.Sc. Honours Geology, 1972
3. I have practised my profession as a mining exploration
geologist continuously since 1972
4. I am a Fellow of the Geological Association of Canada.

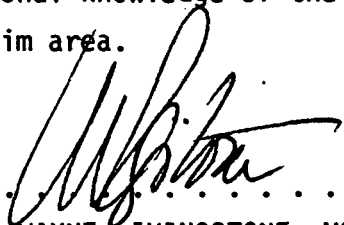


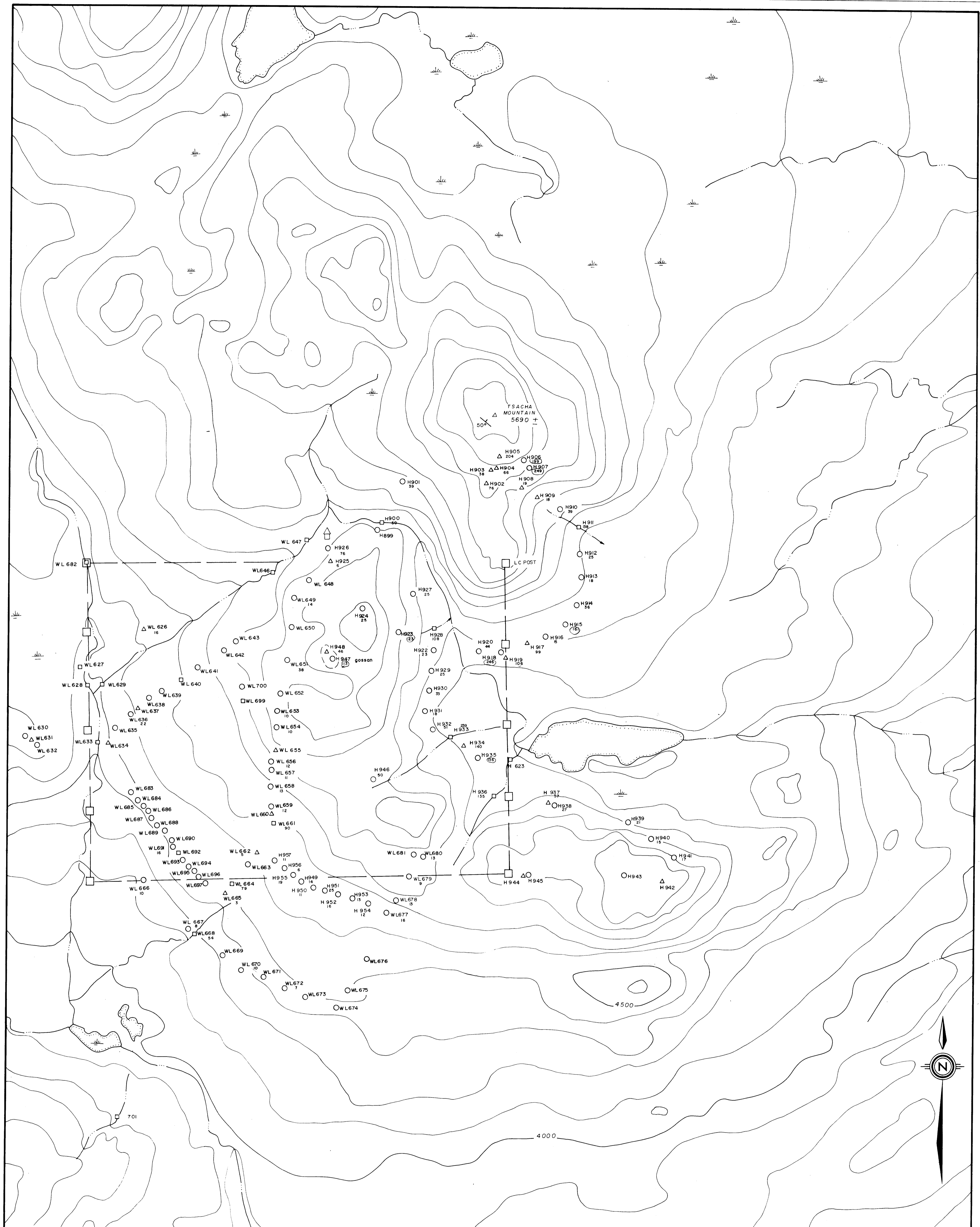
Colin Harivel, B.Sc.

STATEMENT OF QUALIFICATIONS

I, K. WAYNE LIVINGSTONE of Vancouver, British Columbia do hereby certify that,

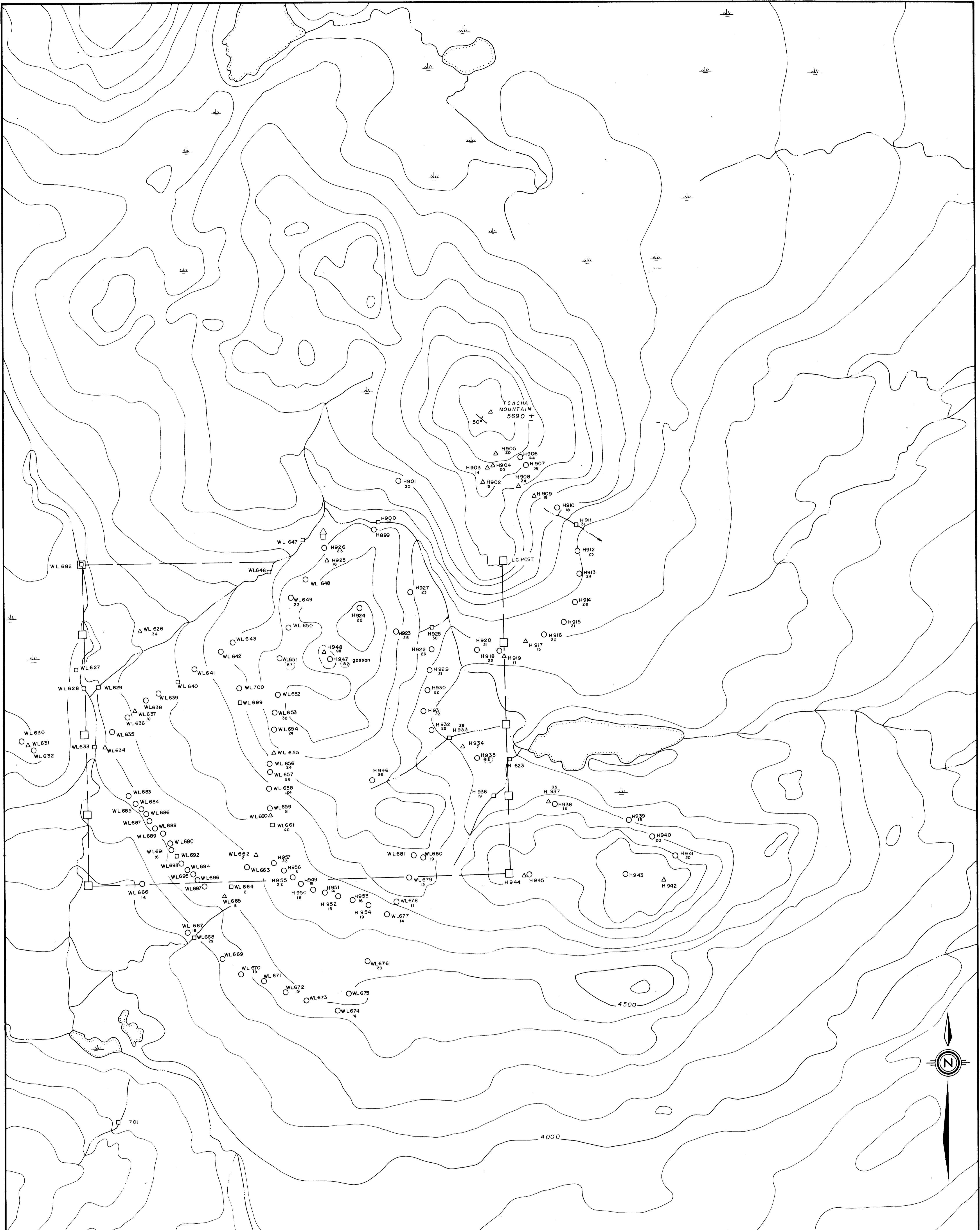
1. I am a Professional Geologist, working in British Columbia and residing at 6775 West Blvd. Vancouver, B.C.
2. I am a graduate of CARLETON UNIVERSITY, Ottawa, Ontario with BSc honours geology 1966.
3. I am a graduate of the UNIVERSITY OF BRITISH COLUMBIA with MSc geology 1968.
4. I have practiced my profession as a mining exploration geologist since 1965.
5. I am a Member of the Geological Association of Canada.
6. I am a Member of the CIMM.
7. This report is based on personal knowledge of the geology and mineral potential of the claim area.


.....
K. WAYNE LIVINGSTONE, MSc.



<p>JMT SERVICES CORP.</p> <p>MTSACHHA PROPERTY</p> <p>OMNECA MINING DIVISION — M 93 F/2W</p>	
<p>EXPLANATION</p> <ul style="list-style-type: none"> ○ Soil sample site □ Silt sample site △ Rock sample site ○ Sample location number ○ WL 664 76 Copper (Cu) in ppm 	<p>COPPER (Cu) GEOCHEMISTRY</p> <p>MINING DIVISION REPORT</p> <p>9632</p> <p>NO.</p> <p>500 1000</p> <p>METRES</p>

FIG. 3



EXPLANATION

○	Soil sample site
□	Silt sample site
△	Rock sample site
○	Sample location number
WL664	Lead (Pb) in ppm

JMT SERVICES CORP.

MTSACHHA PROPERTY

OMNECA MINING DIVISION — M 93 F /2W

LEAD (Pb) GEOCHEMISTRY

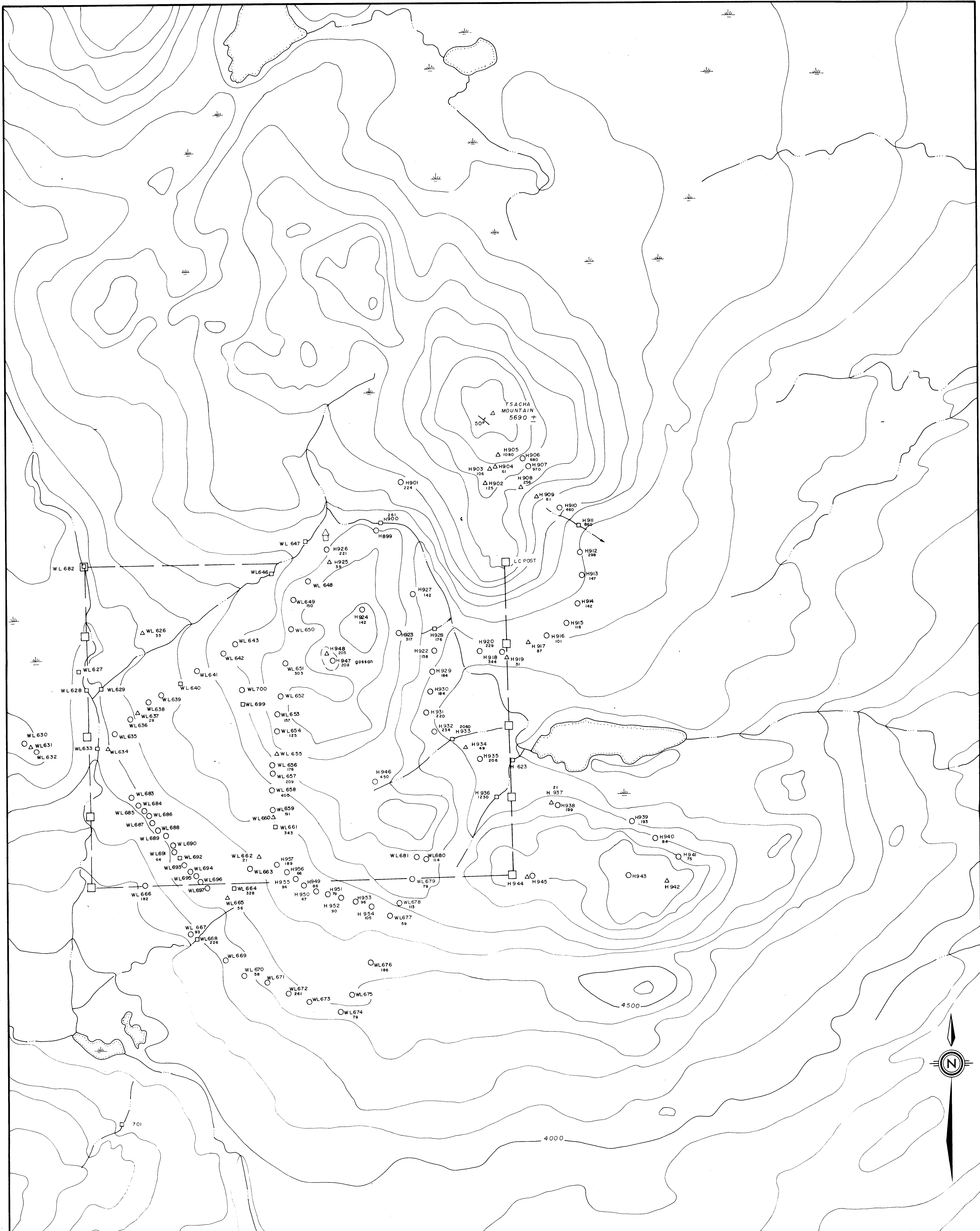
MINING DIVISION

PROPERTY

9632

0 500 1000
METRES

FIG. 4



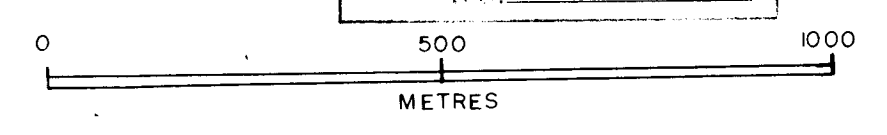
JMT SERVICES CORP.

MTSACHA PROPERTY

OMNECA MINING DIVISION — M 93 F / 2W

ZINC (Zn) GEOCHEMISTRY

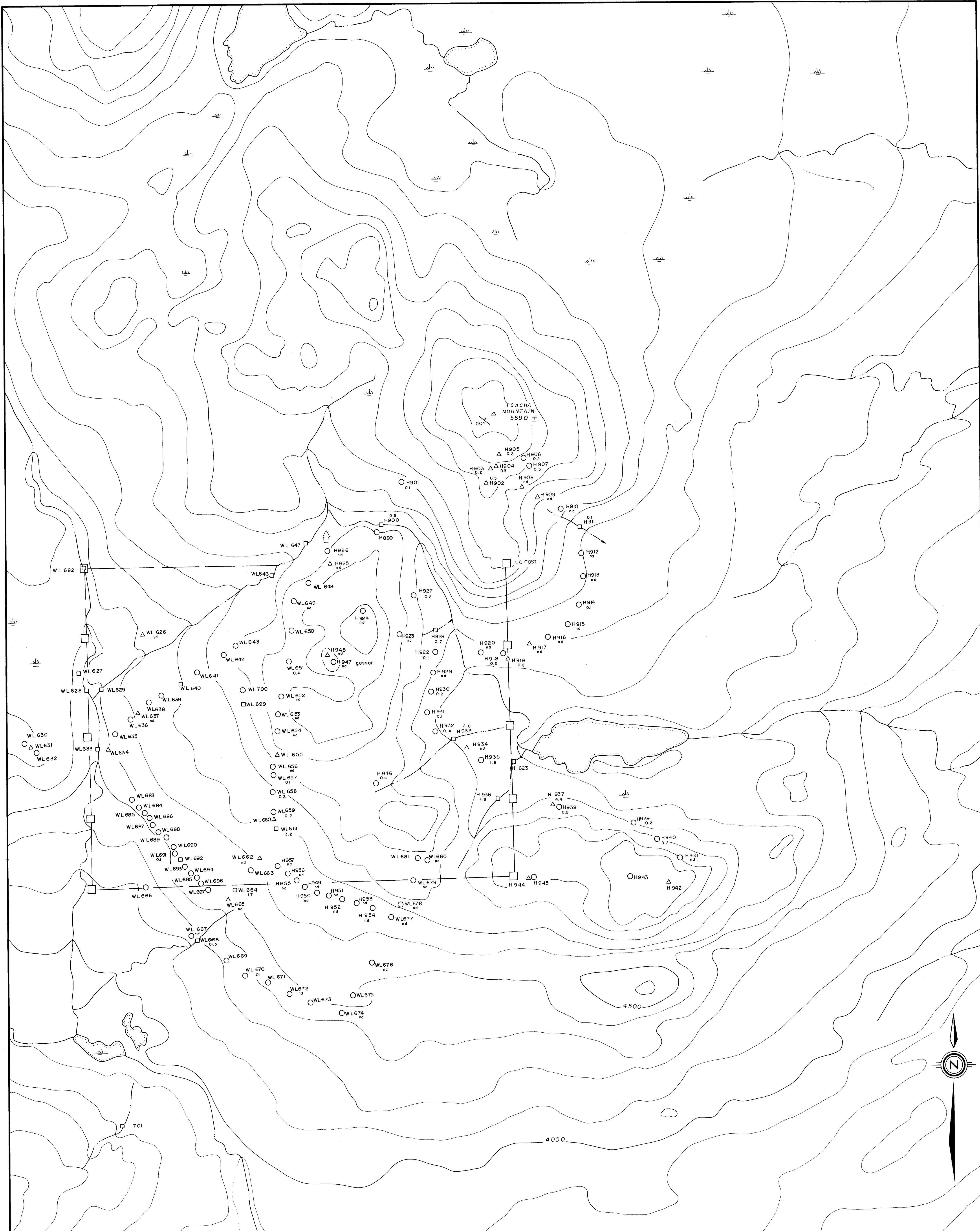
9632



EXPLANATION

- Soil sample site
- Silt sample site
- △ Rock sample site
- Sample location number
- WL664
328 Zinc (Zn) in ppm

FIG. 5



EXPLANATION

○	Soil sample site
□	Silt sample site
△	Rock sample site
○	Sample location number
WL 664 1.7	Silver (Ag) in ppm

JMT SERVICES CORP.

MTSACHA PROPERTY

OMNECA MINING DIVISION — M 93 F/2W

SILVER (Ag) GEOCHEMISTRY

0 500 1000
METRES

FIG. 6