

81-#862. # 9642

REPORT ON
A GEOCHEMICAL SURVEY

BY

G. D. A. SCHELLENBERG, B.Sc.

ON THE

AL GROUP

OWNED BY

SILVER STANDARD MINES LTD.

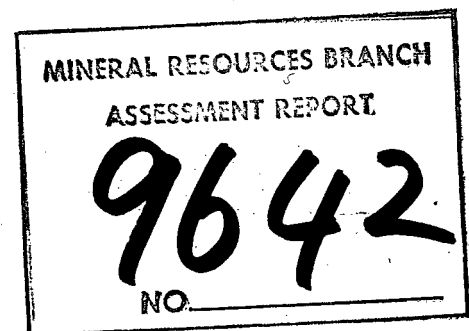
SITUATED NORTHWEST OF KINASKAN LAKE

IN THE

LIARD MINING DIVISION

57° 45'N 130° 20'W

NTS: 104G9W



October 15, 1981

TABLE OF CONTENTS

	<u>Page</u>
Introduction	1
Location and access	1
History	1
Geochemical survey	4
Results	4
Conclusions	4
APPENDIX I - Statement of Costs	7
APPENDIX II - Assay Results	8
APPENDIX III - Certification of Qualifications	9
<u>Figures</u>	
Index map	2
Claim map	3
Sample location map	6

INTRODUCTION

This report summarizes work completed by Teck Explorations Limited on the A1 2 Supplement group of mineral claims owned by Silver Standard Mines Ltd. The claims cover areas containing copper mineralization in Triassic volcanic and sedimentary rocks intruded by dykes of porphyritic diorite.

A program consisting of a geochemical survey was conducted on the claims from June 22 to June 25, 1981. The purpose of the sampling was to extend the known copper showing previously sampled by Silver Standard in 1971 and 1978. A total of 15 rock chip samples were taken from the gossanous areas outside the known showing and assayed for Au, Ag, Cu, Mo. Expenditures incurred are submitted for assessment work credit on behalf of Silver Standard Mines Ltd.

LOCATION AND ACCESS

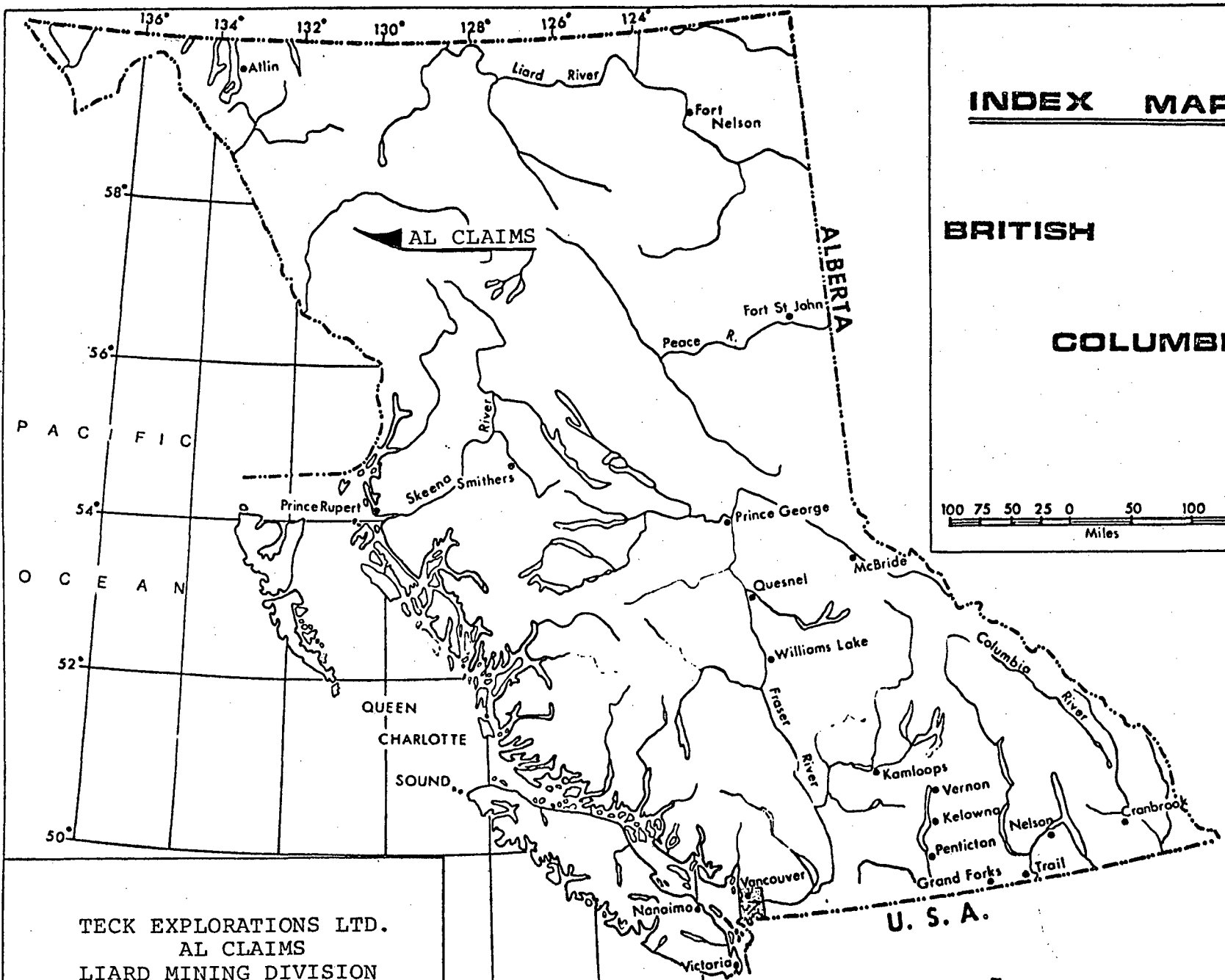
The A1 2 Supplement group consists of mineral claims A1 3, A1 4, Rex 3 Fr., Neet 59, and Neet 61. The claim group is located in the Liard Mining District about 30 km southwest of Iskut at the head waters of a north-west flowing tributary of Quash Creek. Access is by helicopter from Iskut which is on the Stewart-Cassiar Highway (see Figures 1 and 2).

HISTORY

Prospectors for Conwest Explorations Co. Ltd. staked the "Q.C.A." and "Blue" claims near Quash Creek in 1964. These claims were eventually allowed to lapse. Silver Standard Mines Ltd. restaked a portion of the original claims in 1970. Sampling and geological work was carried out by Silver Standard during the summers of 1971 and 1978. On behalf of Silver Standard Mines, Teck Explorations Limited conducted geo-physical and geochemical surveys during the summers of 1980 and 1981.

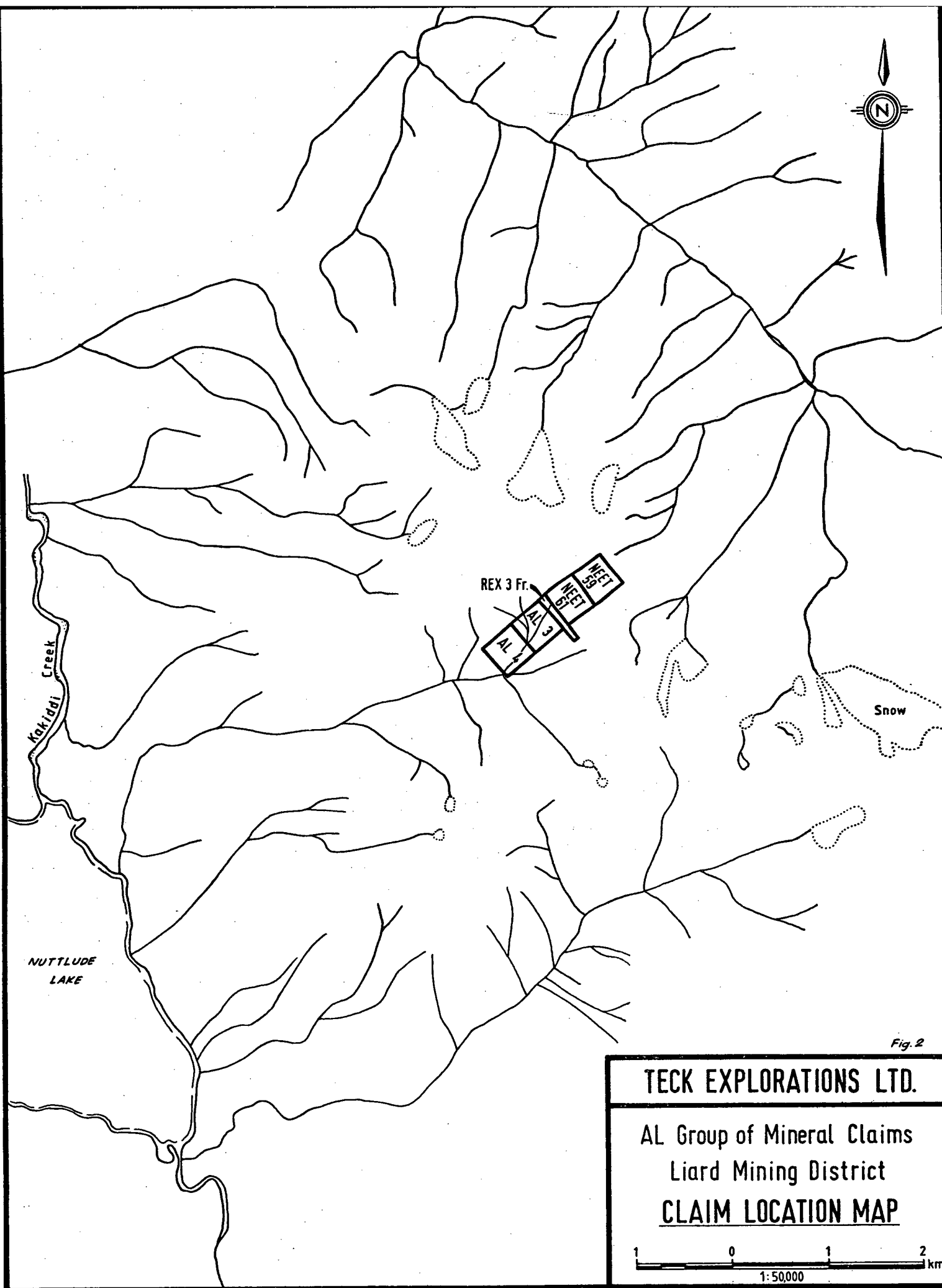
INDEX MAP

**BRITISH
COLUMBIA**



TECK EXPLORATIONS LTD.
AL CLAIMS
LIARD MINING DIVISION
KINASKAN LAKE AREA

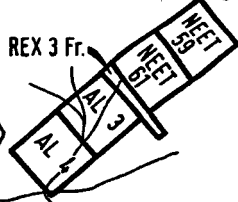
Figure: 1



Kakiddi Creek

NUTTLUDE LAKE

REX 3 Fr.



Snow

Fig. 2

TECK EXPLORATIONS LTD.

AL Group of Mineral Claims
Liard Mining District
CLAIM LOCATION MAP



GEOCHEMICAL SURVEY

A total of 15 rock chip samples were taken on the A1 2 Supplement group of mineral claims (see Figure 3 for locations). The samples were taken over varying lengths and assayed by normal assay techniques by Acme Analytical laboratories of Vancouver. The samples were all assayed for Cu, Mo, Au, Ag and the results compiled in Appendix II.

With the exception of samples AIPS and EIPS, the samples taken consisted of Triassic green volcanics and fine grained meta sedimentary rocks. Samples AIPS and EIPS consisted of Cretaceous intrusive of porphyritic hornblende diorite.

RESULTS (See Appendix II and Figure 3)

Minor copper and gold values were obtained in a small number of the samples taken. Samples AIPS and EIPS contain low grade copper values of .15% and .11% respectively. These samples were taken from the hornblende diorite which is the probable copper source for the area. Samples R81GS38 and R81GS39 contained gold values of .021 and .018 oz/ton. These values were obtained from a highly pyritized outcrop of siliceous andesite and were sampled over a considerable distance.

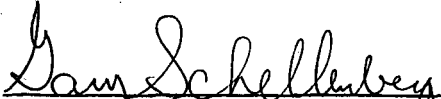
CONCLUSIONS

The copper values in the area appear to be related to the hornblende diorite. Frequent small intrusions of diorite are present throughout the area but no central source has been found. Only a small portion of these intrusives have been sampled. Therefore, further investigation is recommended in order to determine the economic potential of the intrusive.

The grade of gold obtained from the samples has little economic significance. The gold appears only to be associated with the pyrite and silica within the altered andesite where no other economic

minerals are present.

The geochemical survey conducted was generally unsuccessful in extending the Cu showing sampled by Silver Standard in 1971 and 1978.



Gary D.A. Schellenberg, B.Sc.

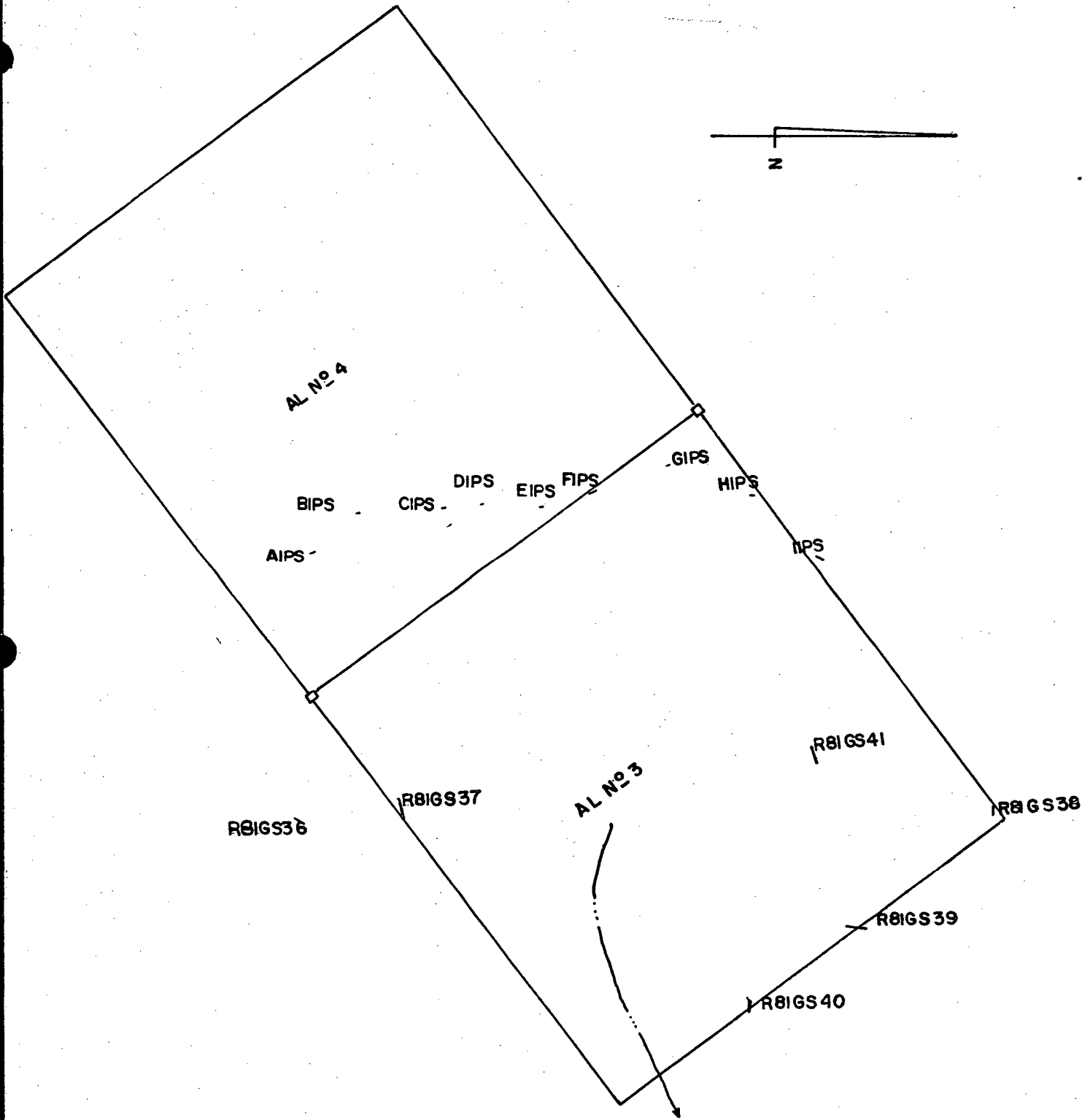


Figure:3

TECK EXPLORATIONS LTD.

- AL CLAIMS -
 - SAMPLE LOCATIONS

KINASKIN LAKE-QUASH CRK.
 LIARD M.D., B.C.

50 0 100 200 m
 1:5000

APPENDIX I
ITEMIZED COST STATEMENT

	\$
<u>Wages</u>	
G. Schellenberg, Geologist 4 days @ \$125.00/day	June 22-25 500.00
M. Kay, Helper 4 days @ \$60.00/day	June 22-25 240.00
<u>Room and Board</u>	
2 men x 4 days x \$20.00/day/man	160.00
<u>Assays</u>	
15 @ \$18.25	273.75
<u>Transportation</u>	
Quasar Helicopters, Bell 206B 3 hrs. @ \$500/hour, including fuel	1,500.00
Mobilization and demobilization of 2 men	100.00
<u>Instrument Rental</u>	
1 radio x 4 days @ \$15/day	60.00
<u>Report preparation</u>	<u>300.00</u>
<u>TOTAL</u>	<u><u>\$3,133.75</u></u>

APPENDIX II

ASSAY RESULTS

<u>Sample No.</u>	<u>Cu %</u>	<u>Ag/ oz/ton</u>	<u>Au. oz/ton</u>	<u>MoS₂</u>	<u>Pb</u>	<u>Zn</u>	<u>Length in meters</u>
A1PS	.15	.06	.001				5 m
B1PS	.04	.01	.001				3 m
C1PS	.03	.01	.001				4.5 m
D1PS	.04	.01	.010				3.2 m
E1PS	.11	.06	.001				2.5 m
F1PS	.08	.01	.001				7 m
G1PS	.05	.01	.001				2.9 m
H1PS	.01	.02	.001				6 m
I1PS	.02	.01	.001				7.7 m
R81GS36	.01	.01	.001	.001	.01	.01	10 m
R81GS37	.01	.01	.001	.001	.01	.01	20 m
R81GS38	.01	.01	.021	.001	.01	.01	4 m
R81GS39	.03	.01	.018	.002	.01	.01	20 m
R81GS40	.04	.01	.001	.001	.01	.01	10 m
R81GS41	.04	.01	.001	.001	.01	.01	15 m

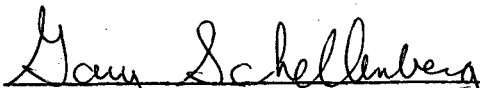
APPENDIX III

CERTIFICATION OF QUALIFICATIONS

GARY D.A. SCHELLENBERG, B.Sc.

I hereby certify that:

- 1) I graduated from the University of British Columbia in May of 1981 with a B.Sc. degree in geology.
- 2) I have worked as an exploration assistant and mine geologist assistant during the summer months prior to graduation.
- 3) I have worked since graduation as an exploration geologist in Canada.


Gary (D.A) Schellenberg, B.Sc.