

SI-1833-9716  
DIAMOND DRILLING REPORT ON THE  
82M/12 FOGGY AND JOSEPH GROUPS  
OF CRAIGMONT MINES LIMITED AT  
FOGHORN MOUNTAIN, B.C., BY  
N.B. VOLLO, P.ENG., SEPT. 16/81

9716

ASSESSMENT REPORT

TYPE: DIAMOND DRILLING  
CLAIMS: FOGGY 2 and 3, Joseph 7  
MINING DIVISION: KAMLOOPS  
NTS LOCATION: 82M/12W  
LATITUDE: 51°32'  
LONGITUDE: 119°58'  
OWNER: CRAIGMONT MINES LIMITED  
OPERATOR: " " "  
AUTHOR: N.B. VOLLO, PENG.  
DATE: SEPT. 16th, 1981

MINERAL RESOURCES BRANCH  
ASSESSMENT REPORT

9716

NO. \_\_\_\_\_



LOCATION AND ACCESS

Sept. 16th, 1981

The Foggy and Joseph groups are located on Foghorn Mountain, about 15 km SE of Clearwater and can be reached by a rough road from Birch Island up Foghorn Creek or via the Jones Creek or Harper Creek logging roads.

CLAIMS

The property consists of the Foggy 2 and 3 claims, record numbers 1678 and 1679, totalling 40 units; the Joseph 3 to 13 claims, record numbers 1484 to 1494, and the Joseph 14 claim, record number 1626, totalling 232 units. All are in the Kamloops Mining Division and held by Craigmont Mines Limited.

HISTORY AND PREVIOUS WORK

The history of the property is detailed by the writer in Assessment Reports dated Dec. 17th, 1979 and Oct. 3rd, 1980.

GEOLOGY

The property lies across the contact between predominantly rhyolitic rocks of the Eagle Bay formation to the east and mainly basic volcanic rocks of the Fennell formation to the west. The contact strikes northwesterly and dips moderately to steeply west. Flow contact relationships observed in drill holes indicate tops face west.

Persistent cherty tuffite units occur at the contact and in Fennell rocks, are often graphitic and form excellent electromagnetic conductors. A large area of strong hydrothermal alteration, extensive gossans and weak Pb-Zn-Cu-Ag mineralization is present on Foghorn Mountain.

DRILL PROGRAM

Holes FH-15 to 18 were drilled to test the altered area and intersected considerable widths of pyritic tuffite and intense alteration but no economic mineralization. Holes JC-4 and 5 were drilled to test strong conductors with attendant geochemical highs, and intersected cherty tuffite and graphitic tuffite respectively but only traces of Pb-Zn mineralization. The program totalled 545 m.

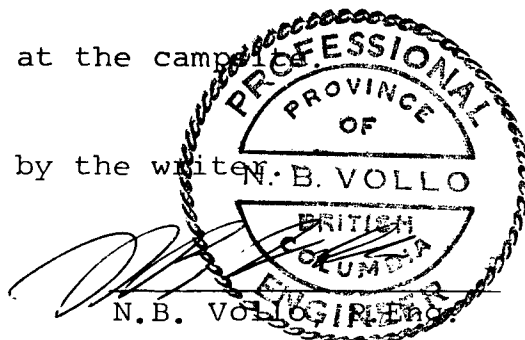
CORE STORAGE

Core is stacked at the camp

QUALIFICATIONS

Core was logged by the writer

Sept. 16th, 1981



STATEMENT OF EXPENDITURES

Personnel

N.B. Vollo, P.Eng., Oct. 26/80 to Sept. 30th/81, supervision, core logging and report, 12 days at \$250 -----	\$ 3,000
L. Loranger, Aug. 20/81 to Sept. 13/81, camp mob and demob, drillsite supervision, 21 days at \$150 -----	3,150
R. Bugera, Aug. 20/81 to Sept. 13/81, camp mob and demob, 5 days at \$85 -----	425
subtotal	<u>\$6,575</u>

Diamond Drilling

29 m at \$45/m -----	\$ 1,305
537.6 m at 69.20/m -----	37,215
subtotal	<u>\$38,520</u>
TOTAL	\$45,095

Contractor

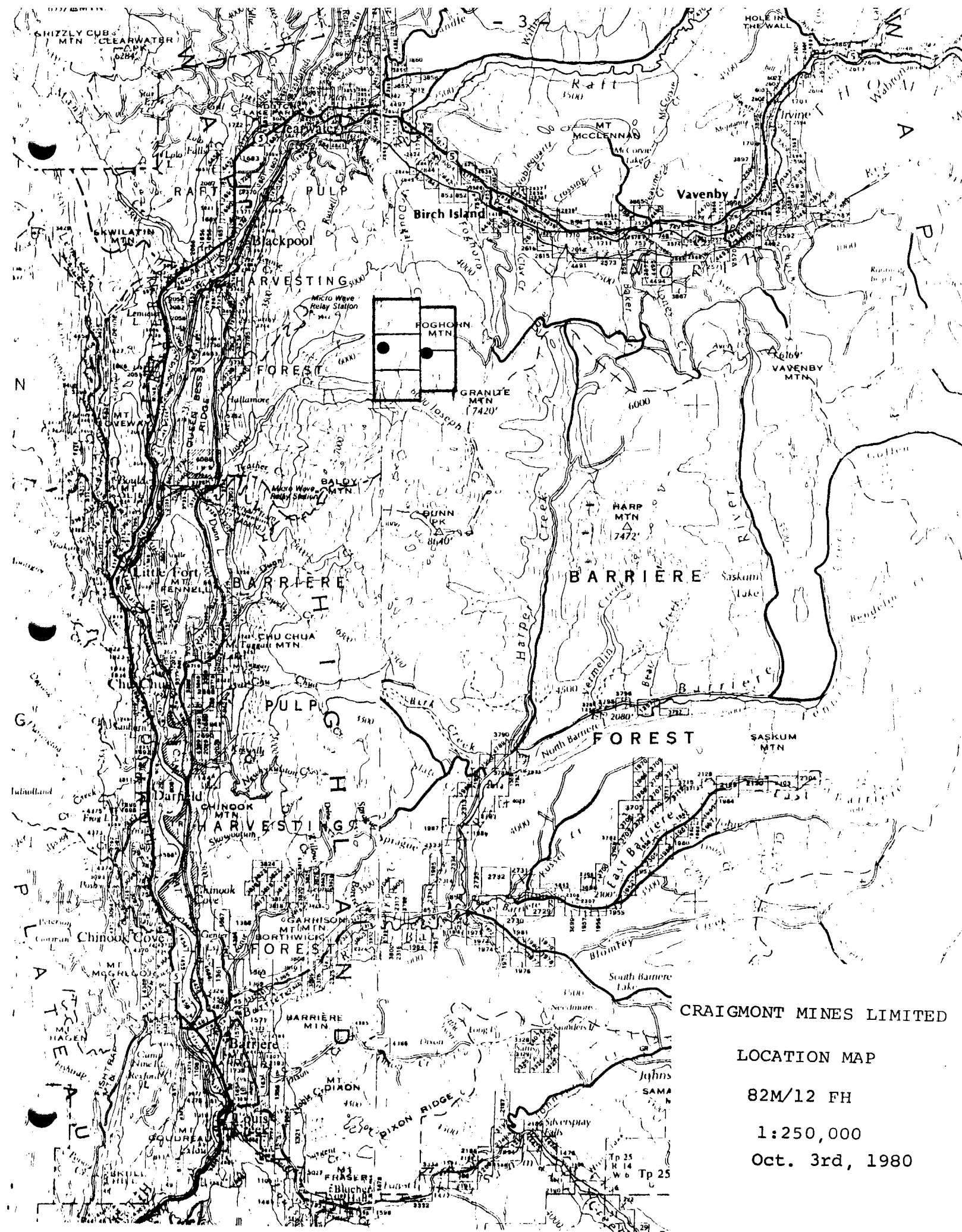
H. Allen Diamond Drilling Ltd.  
Box 1397,  
MERRITT, B.C. VOK 2B0

Prorated as follows:

Foggy 2 claim,  $177.8/566.6 \times \$45,095 = \$13,980$ .

Foggy 3 claim,  $196.5/566.6 \times \$45,095 = 15,810$

Joseph 7 claim,  $192.3/566.6 \times \$45,095 = 15,305$



CRAIGMONT MINES LIMITED

LOCATION MAP

82M/12 FH

1:250,000

Oct. 3rd, 1980

Tp 25  
R 14  
W 6  
Tp 25



# DIAMOND DRILL CORE LOG - SAMPLE RECORD

DEPTH	DIP	BEARING AST.
COLLAR	-50°	E90°

PROPERTY E2 M/12 FH CLAIM F9972 HOLE NO. F14-16  
 LATITUDE \_\_\_\_\_ STARTED Aug 24/81 CORE SIZE BG  
 DEPARTURE \_\_\_\_\_ FINISHED Aug 25/81 SECTION 10500 N  
 ELEVATION ~1975 TOTAL LENGTH 107.3 10000E  
 LOGGED BY N.B. Valle

DEPTH	DESCRIPTION	MINERALIZATION	SAMPLE	FROM	TO	m	Cu%	Zn%	Pb%	Au ppm	Ag ppm
0.0	Casing										
8.0	Tuffite - light grey, very siliceous, hard, broken, very fractured and rusty - 20% L.C.		5858	8.0	13.0	5.0					2
	13.0 lost core										
	14.3 - as before, very siliceous, massive but strongly fractured, rusty, badly broken up	Z-Si fine b	59	14.3	20.0	5.7					2
		"	60	20.0	25.0	5.0					1
		"	61	25.0	30.0	5.0					1
	27.0 - becomes less rusty, still badly broken up	"	62	30.0	35.0	5.0					1
		"	63	35.0	40.0	5.0					1
	32.0 - becomes fairly fresh, with good recovery - faint bedding about 25° CA	"	64	40.0	45.0	5.0					1
		"	65	45.0	50.0	5.0					2
	NR 45° slip and up to 2 mm gouge to										
47.7	Grey Sillite Schist - Grey fine grained, moderately sheared 50-55° CA. with frequent 2-5 mm gouge seams // schistosity. Probably an altered felsic	10% fine b	66	50.0	55.0	5.0					3

5



# DIAMOND DRILL CORE LOG -- SAMPLE RECORD

 PROPERTY 8217/12 FH

 HOLE No. FH-16

 SHEET No. 2 of \_\_\_\_\_

DEPTH	DESCRIPTION	MINERALIZATION	SAMPLE	FROM	TO	m	Cu%	Zn%	Pb%	Au ppm	Ag ppm
	volcanic - (charge)										
	sharply to		5867	55.0	60.0	5.0					1
58.2	Tuffite -										
	light grey, with	10-20% diss	68	60.0	65.0	5.0					1
	no distinct bedding -	and stringers	69	65.0	70.0	5.0					1
	Mod fractured and	P7-									
	healed by sulfides - some										
	short sections of primary										
	breccia										
	10 cm massive P7 bands		70	70.0	75.3	6.3					3
	one contact 80°, other 40°										
	at 72.1, 72.9										
	45° shearing, slips,										
	breccia and gouge to										
76.3	Serpentine Schist -										
	pale yellowish, intensely										
	altered - fault gouge										
	72.0 - same, but with	Spic P7 -	71	76.3	80.0	3.7					1
	only scattered 50-60°	and a									
	gouge seams - scattered	black f.g.									
	splotches and streaks	accumulation									
	of a fine black mineral,										
	possibly biotite										
	71.3 - soft 55° fault gouge										
	71.7 - pale yellowish grey		72	80.0	85.0	5.0					1
	Serpentine carbonate (partly										
	calcite) roughly banded to										

9



# DIAMOND DRILL CORE LOG - SAMPLE RECORD

DEPTH	DIP	BEARING AST.
COLLAR	-50°	090°

PROPERTY ..... 82 17/12 FH ..... CLAIM Foggy R HOLE NO. FH 17  
 LATITUDE ..... STARTED Aug 28/81 ..... CORE SIZE BQ  
 DEPARTURE ..... FINISHED Aug 30/81 ..... SECTION 10700N  
 ELEVATION ~1985 ..... TOTAL LENGTH 109.7 ..... 11004 E  
 LOGGED BY N.B. Kelly

DEPTH	DESCRIPTION	MINERALIZATION	SAMPLE	FROM	TO	m	Cu%	Zn%	Pb%	Au ppm	Ag ppm
0.0	Casing										
5.0	Grey Tuff - Light greenish grey, weedy sh'd 40-50° ch, fine grained with scattered distinct dark fragments up to 3mm in a finer matrix - Mod. sericitized 40 cm white qtz vein, rusty and oxidized, at 5.6 m - - 15.0 - same, slightly coarser textured, distinct, fragmental - weak shearing 45°	1-2% diss Pz -									
21.0	Same, but with a few qtz veins, mostly 20-35°, with diss. Gw	1-2% Pz Ga	5873	21.0	26.0	5.0			0.03		4
26.0	becomes dark grey, with 10% 2-5 mm qtz calcite stringers.	2-5% diss Pz, a few Pz stringers									
31.0	pale grey green, fine, distinct, fragmental	1-2% Pz									

8

# DIAMOND DRILL CORE LOG -- SAMPLE RECORD

 PROPERTY 820712 FH

 HOLE No. FH-17

 SHEET No. 2 of 3

DEPTH	DESCRIPTION	MINERALIZATION	SAMPLE	FROM	TO	m	Cu%	Zn%	Pb%	Au ppm	Ag ppm
	and foliated 50° CA - mod serritized and Mg(?) carbonatized - a few py bands // foliation 1 m dark grey bands at 35.3 - 39.6, slightly harder, more siliceous										
	59.0 - same	P <sub>7</sub> Ga stry	5874	59.0	60.0	1.0			0.71		10
	60.0 - same, a few dark sections -										
	64.0 - becomes dark grey, silicified	2-5% diss and stry P <sub>7</sub>									
	68.0 - light grey, but quite siliceous, either silicified or originally more felsic - weak foliation 60-65° CA	1-2% diss P <sub>7</sub>									
	74.5 - becomes light grey green, fine, nearly massive - a few Qtz carb stry										
	70 cm Qtz P <sub>7</sub> Ga at 79.3 irregular Ga stry at 81.0		5875	79.3	79.5	0.2			0.52		6
83.6	Fault zone - bleached, sheared and silicified, with 20 cm stry 65° gouge at 84.1	5-10% P <sub>7</sub> Ga	5876	83.6	85.0	2.4	Tr	Tr	0.04		3



# DIAMOND DRILL CORE LOG - SAMPLE RECORD

DEPTH	DIP	BEARING AST.
COLLAR	-50°	090°

PROPERTY 8217/12 FH CLAIM F9997 3 HOLE NO. FH-18  
 LATITUDE \_\_\_\_\_ STARTED Aug 30/81 CORE SIZE BQ  
 DEPARTURE \_\_\_\_\_ FINISHED Sept 2/81 SECTION 10300N  
 ELEVATION ~1965 TOTAL LENGTH 1253 10800E  
 LOGGED BY N. G. Vell...

DEPTH	DESCRIPTION	MINERALIZATION	SAMPLE	FROM	TO	m	Cu%	Zn%	Pb%	Au ppm	Ag ppm
0.0	Casing										
2.0	Tuffite -		5879	2.0	5.0	3.0					5
	Grey, very rusty and broken, with sulfides locked out -	Originally had about 15% Py	80	5.0	10.0	5.0					4
	Very little evidence of bedding - 10% white quartz veins at various angles		81	10.0	15.0	5.0					3
	22.0 - becomes fresh, dark grey, with poor bedding at various angles from 40°-90°	5% Py, mostly diss. a few strgs.	83	20.0	25.0	5.0					3
	10% later white quartz strgs -		84	25.0	30.0	5.0					2
	A few buff coloured bands and zones of primary breccia	10-15% Py	85	30.0	35.0	5.0	Tr	0.01			3
		"	86	35.0	40.0	5.0	Tr	0.01			2
		"	87	40.0	45.0	5.0					2
		"	88	45.0	50.0	5.0	Tr	0.01			2
	63.0 - becomes blocky - 25% lost core - bedding or banding faint at about 80° CA	30% Py sp	89	50.0	55.0	5.0	Tr	0.01			2
		" " "	90	55.0	60.0	5.0	Tr	0.01			2
		20% " "	91	60.0	65.0	5.0	Tr	0.01			3
			92	65.0	70.0	5.0	Tr	0.01			2
	73.0 - same, but fairly good core - 95% Rec.	10% Py	5893	70.0	75.0	5.0	Tr				2
			94	75	80.0	5.0	Tr				2









# DIAMOND DRILL CORE LOG -- SAMPLE RECORD

 PROPERTY 93 P/9 JC

 HOLE No. JC-4

 SHEET No. 2 of \_\_\_\_\_

DEPTH	DESCRIPTION	MINERALIZATION	SAMPLE	FROM	TO	m	Cu%	Zn%	Pb%	Au ppm	Ag ppm
	a fault zone - grades sharply to										
42.0	Basalt - Green, strongly carbonatized, with abundant fine microcrysts of pink carbonate - also abundant fine pink leucocrone(?) Bleached zones around 60° qtz-carb veins at 49.2 and 49.5	1-2% P <sub>7</sub> as coarse cubes									
54.8	Tuffite - Cherty grey quartz - poorly primary breccia, poorly bedded 60° 10 cm 60° gouge to	Minor P <sub>7</sub>									
59.8	Basalt - Green, medium to coarse with "pinks dot gibber" texture - grades sharply to 63.0 - bleached and silicified zone - abundant pink carbonate - 2cm 10° qtz spG vein at 64.3 66.0 - coarse textured, green, massive with abundant	2% diss P <sub>7</sub>									
		Minor P <sub>7</sub>									

 P<sub>7</sub>



# DIAMOND DRILL CORE LOG - SAMPLE RECORD

DEPTH	DIP	BEARING AST.
COLLAR	-50°	090°

PROPERTY ~~920/8JC~~ 920/8JC CLAIM 30.7 HOLE NO. JC-5  
 LATITUDE ..... STARTED Sept 11/81 CORE SIZE BQ  
 DEPARTURE ..... FINISHED Sept 12/81 SECTION 9400 N  
 ELEVATION 1878 TOTAL LENGTH 94.0 8550 F  
 LOGGED BY N.B. Villo

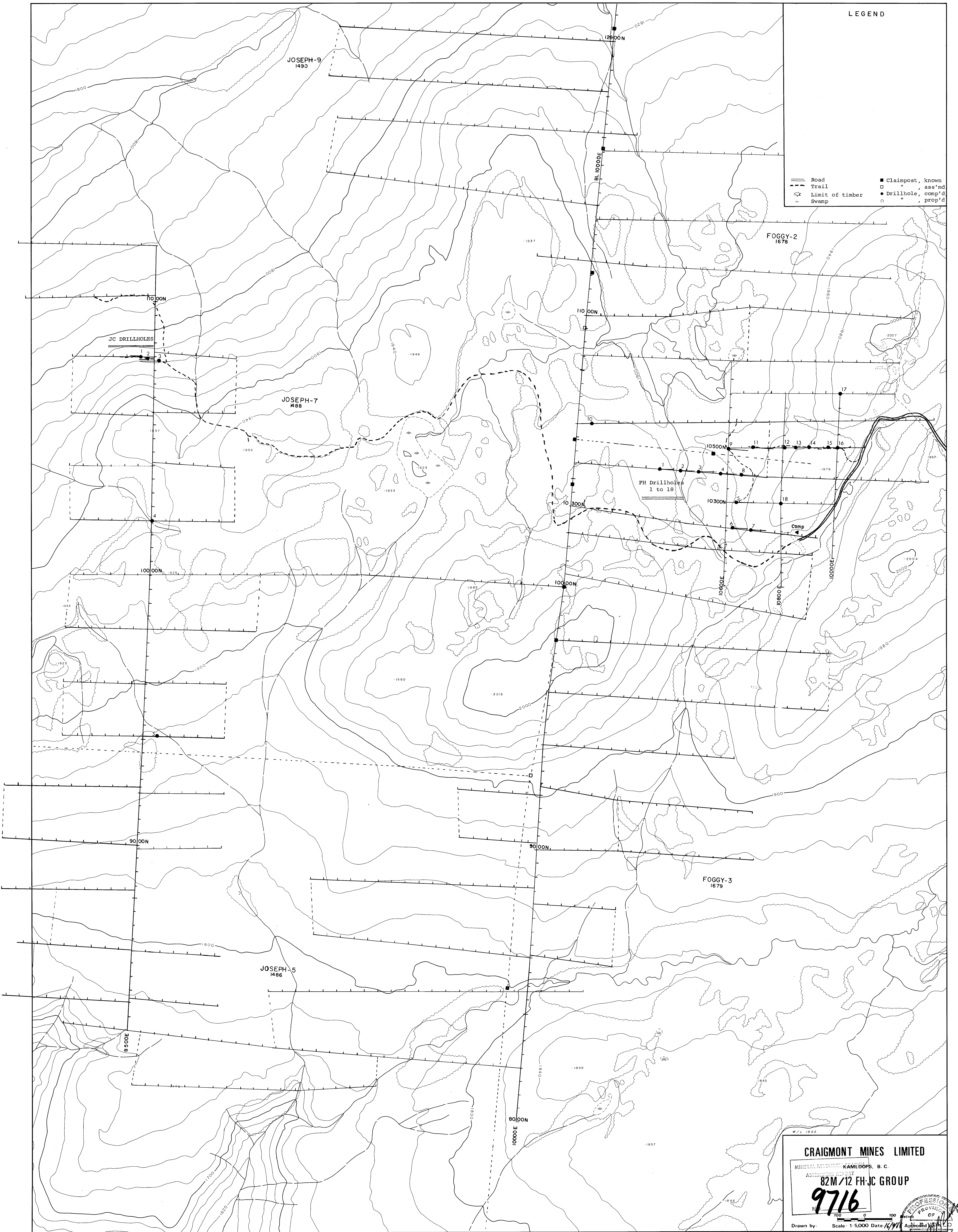
DEPTH	DESCRIPTION	MINERALIZATION	SAMPLE	FROM	TO	m	Cu%	Zn%	Pb%	Au ppm	Ag ppm
0.0	Casing										
4.5	Black Tuffite - Jet black, well bedded 40-50° - 80-90% graphitic shale with 10% black chert bands - Good DC conductor - As little as 1 KΩ resistance over 15 cm. Rusty and brown										
9.0	Some but becoming fresh - Pyrite as blebs up to 5 cm but mostly 1-2 mm - 5% white qtz - mg carb. stegite, Numerous gouge seams and slickensides - also crenulated and folded with bedding 0° in some cases 15 cm black 75° gouge to	2-5% Py									

17



LEGEND

- Road
- - - Trail
- ☆ Limit of timber
- ~ Swamp
- Claimpost, known
- " " , ass'd
- Drillhole, comp'd
- " " , prop'd



CRAIGMONT MINES LIMITED

MINERAL RESOURCES KAMLOOPS, B.C.  
ASSESSMENT REPORT  
82M/12 FH-JC GROUP

9716

Scale: 1:5,000 Date: 1/4/78 Approved: [Signature]

