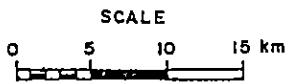


WARE
BRITISH COLUMBIA



9722

part 2
012

Comins 94F/7,2

Drawn by:		Traced by:	
Revised by	Date	Revised by	Date

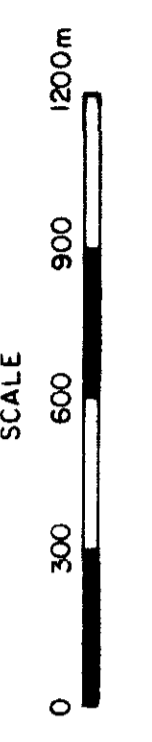
LOCATION MAP

GNOME PROPERTY

Scale: 1: 500,000

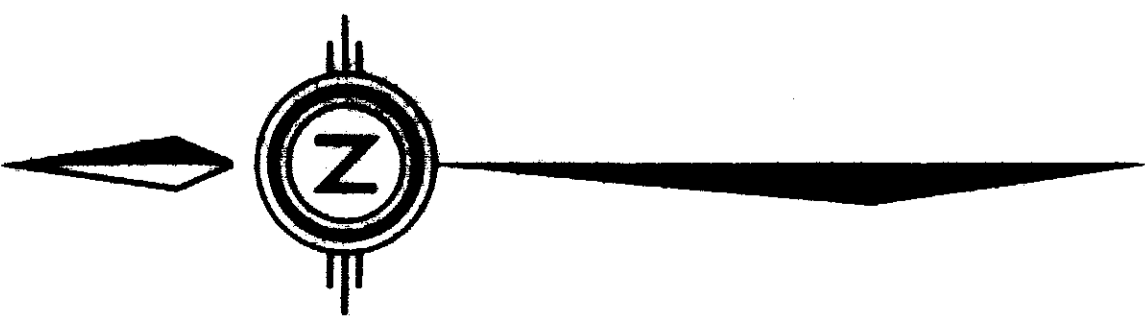
Date:

Plate: 1

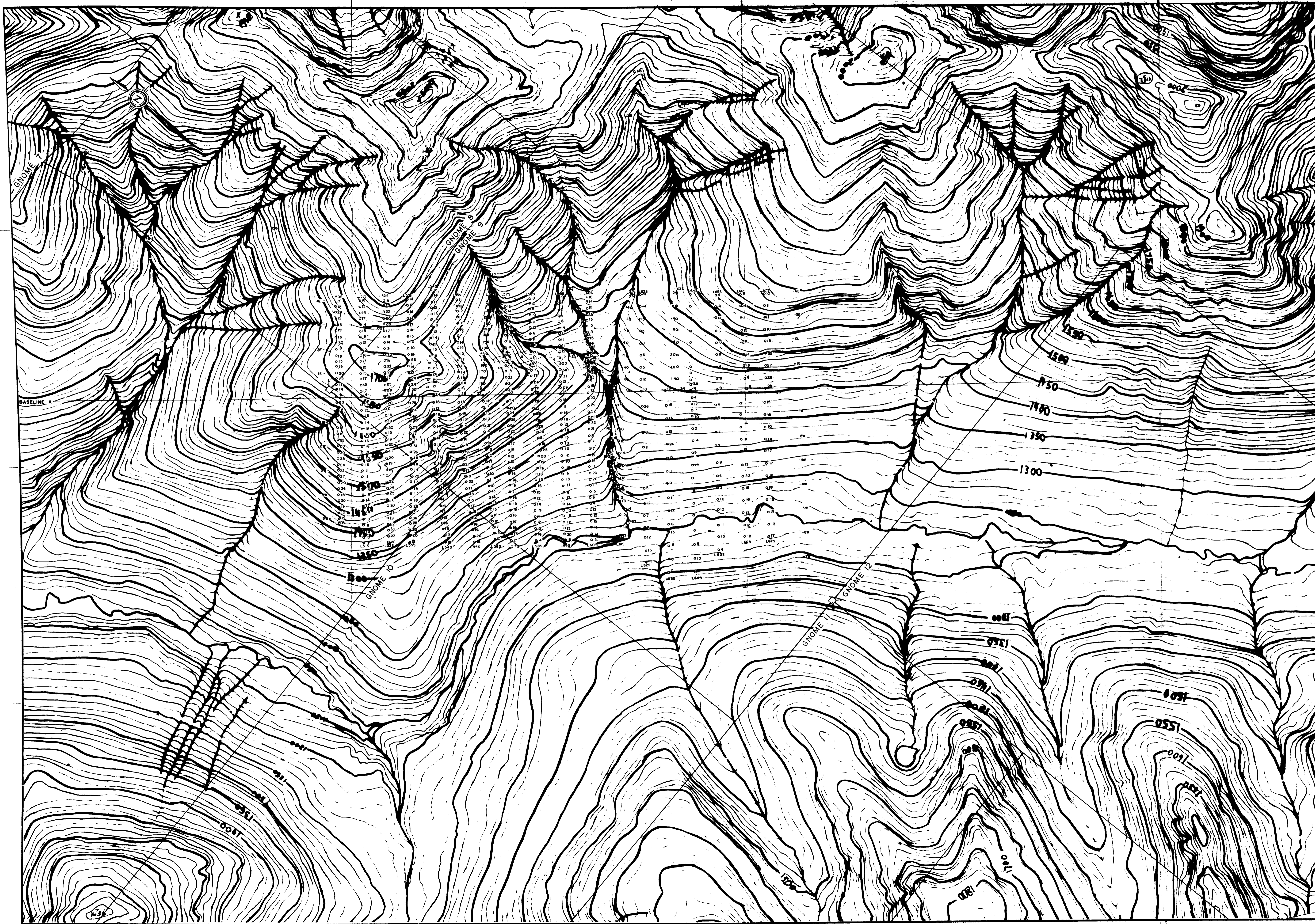


part 2
of 2

9722



GNOME PROPERTY		FORM 94F 7E/2E	
Drawn by: VK	Traced by:		
Revised by:	Date:	Revised by:	Date:
CLAIM GROUP BOUNDARIES			
Scale: 1:5,000		Date: OCTOBER, 1981	Plate: 2

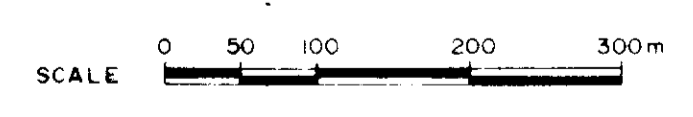


LEGEND

- SOIL ○
- SILT ○
- HEAVY △
- ROCK *
- INSUFFICIENT SAMPLE I
- GOSSAN ⊙

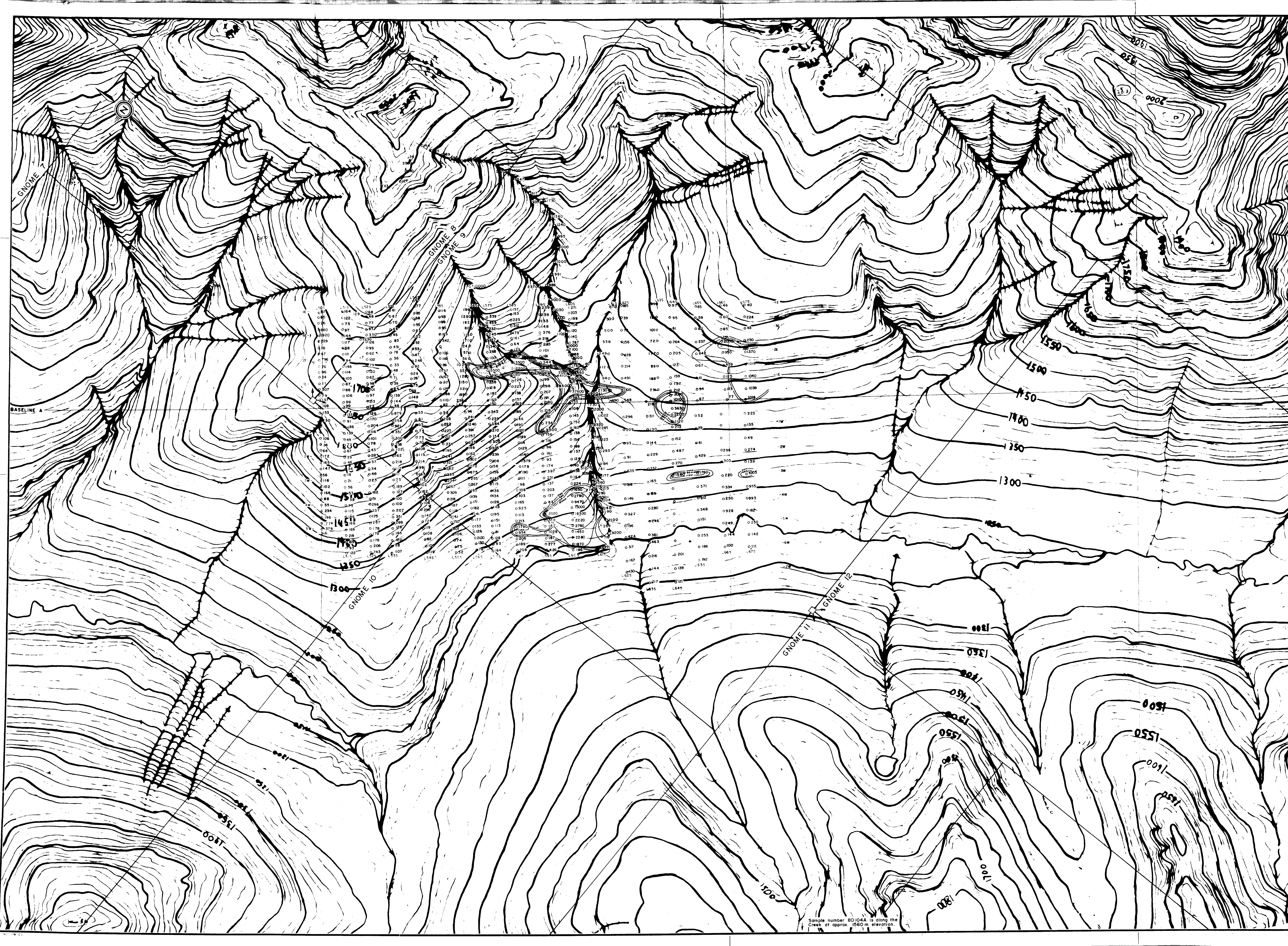
Note: It was not possible to contour lead values since they were too low and dispersed.

Geochemical map to accompany assessment report on the GNOME Nos 1-12 by Virginia M Kuron, dated, October 30, 1981



9722 Part 2 of 2

GNOME PROPERTY		94F7.2
Drawn by: VK	Traced by:	
Checked by:	Checked by:	
LEAD GEOCHEMISTRY		
SOUTH SHEET		
Scale 1:5000	Date October, 1981	Page 11

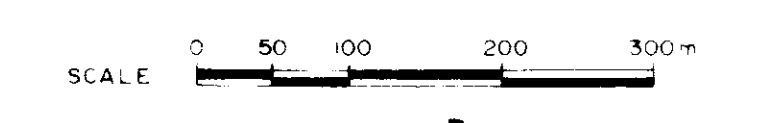


LEGEND

- SOIL ○
- SILT □
- HEAVY ▽
- ROCK △
- INSUFFICIENT SAMPLE ⊙
- GOSSAN ⊕

Contour intervals as shown - in ppm Zn

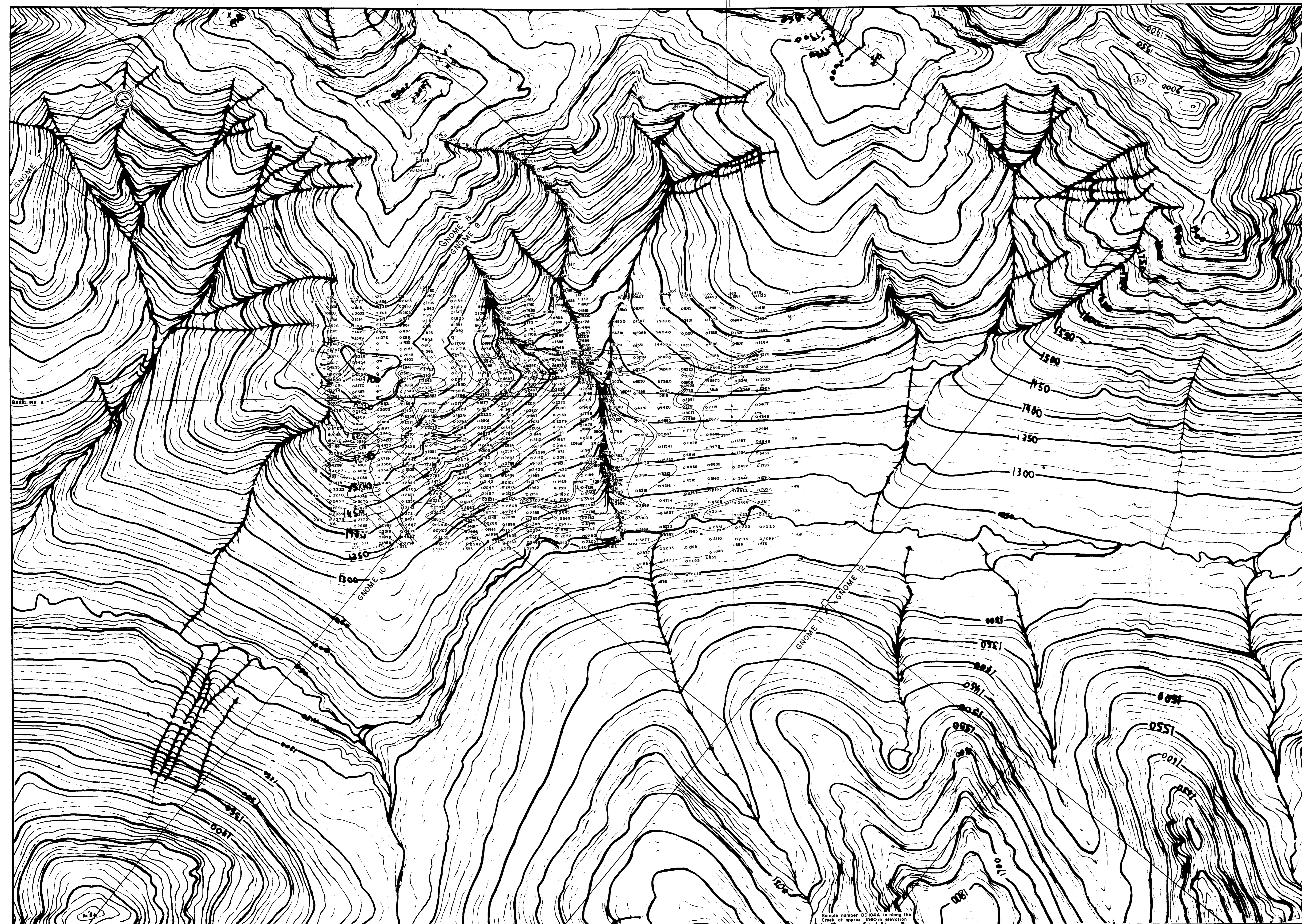
Geochemical map to accompany assessment report on the GNOME Nos 1-12 by Virginia M. Kuron, dated, October 30, 1981



9722 part 2 of 2

GNOME PROPERTY		94 F/7, 2
Drawn by: UK	Traced by:	
ZINC GEOCHEMISTRY		
SOUTH SHEET		
Scale: 1:5000	Date: October, 1981	Page: 12

Sample number BD104A is along the Creek at approx. 1560 m elevation.



LEGEND

- SOIL ○
- SILT □
- HEAVY △
- ROCK ×
- INSUFFICIENT SAMPLE †
- GOSSAN ⊙

Contour intervals as shown - in ppm Ba

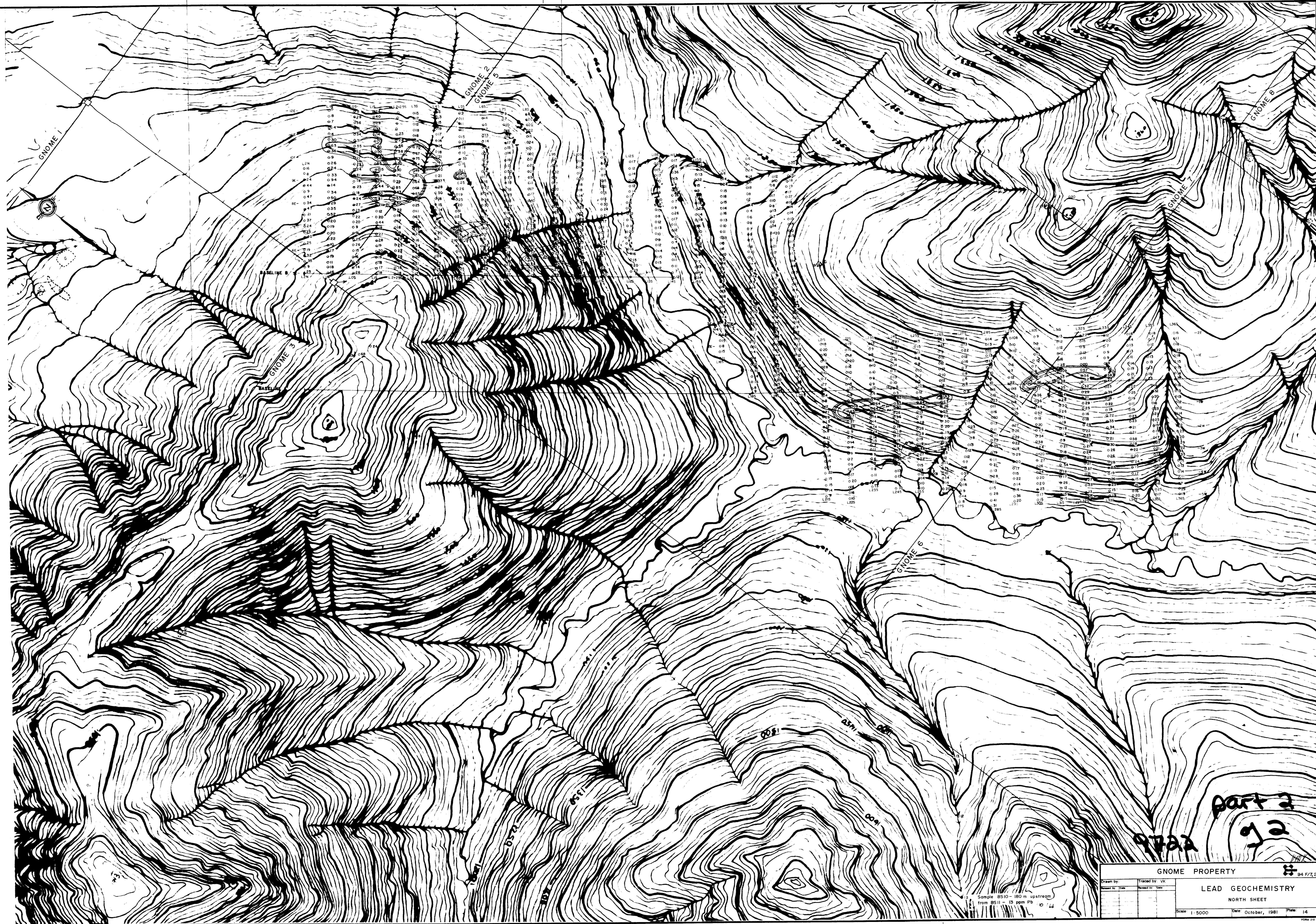
Geochemical map to accompany assessment report on the GNOME Nos. 1-12 by Virginia M. Kuran, dated, October 30, 1981.

SCALE 0 50 100 200 300m

9722 part 2 of 2

GNOME PROPERTY		94 F72.2
Drawn by: VK	Traced by:	
Checked by:	Checked by:	
BARIUM GEOCHEMISTRY		
SOUTH SHEET		
Scale: 1:5000	Date: October, 1981	Page: 13

Sample number BD104A is along the Crest of approx. 1850' elevation.

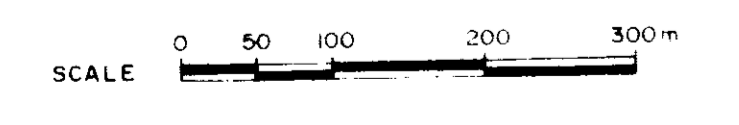


LEGEND

- SOIL
- SILT
- HEAVY
- ROCK
- INSUFFICIENT SAMPLE
- GOSSAN

Contour intervals as shown - in ppm

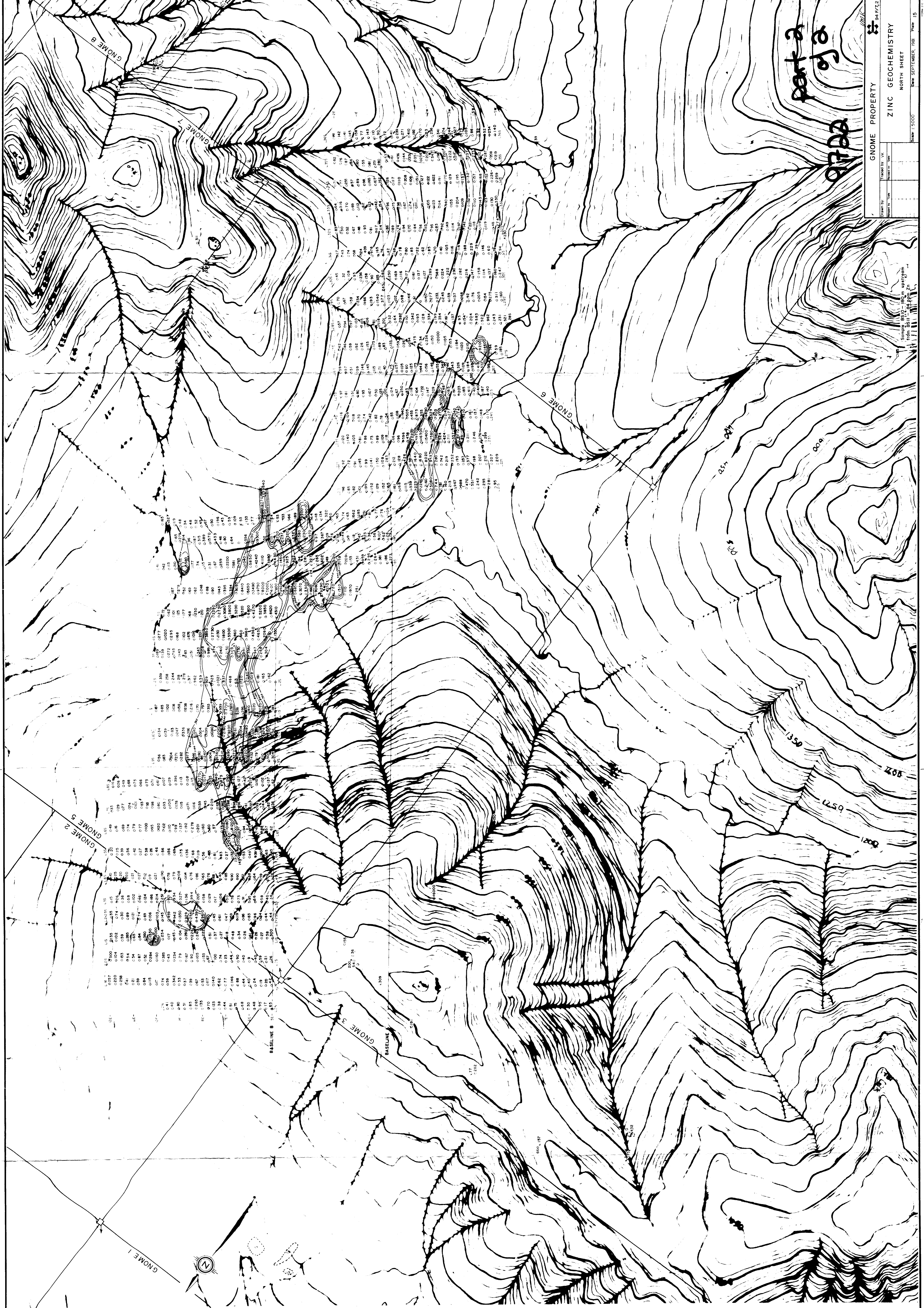
Geochemical map to accompany assessment report on the GNOME Nos 1-12 by Virginia M. Kuran, dated, October 30, 1981.



GNOME PROPERTY		94 F7,2
Drawn by: []	Traced by: vk	
LEAD GEOCHEMISTRY		
NORTH SHEET		
Scale 1:5000	Date: October, 1981	Plate 14

Part 2
9700
92

Sample BS10 - 180 m upstream from BS11 - 13 ppm Pb



part 2
of 2
9702

GNOME PROPERTY
 ZINC GEOCHEMISTRY
 NORTH SHEET
 SCALE 1:5000
 DATE: SEPTEMBER, 1987
 SHEET 15

GNOME 2

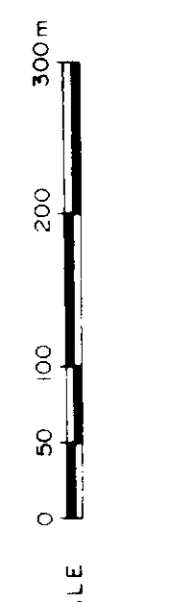
018	019	020	021	022	023	024	025	026	027	028	029	030	031	032	033	034	035	036	037	038	039	040	041	042	043	044	045	046	047	048	049	050	051	052	053	054	055	056	057	058	059	060	061	062	063	064	065	066	067	068	069	070	071	072	073	074	075	076	077	078	079	080	081	082	083	084	085	086	087	088	089	090	091	092	093	094	095	096	097	098	099	100	101	102	103	104	105	106	107	108	109	110	111	112	113	114	115	116	117	118	119	120	121	122	123	124	125	126	127	128	129	130	131	132	133	134	135	136	137	138	139	140	141	142	143	144	145	146	147	148	149	150	151	152	153	154	155	156	157	158	159	160	161	162	163	164	165	166	167	168	169	170	171	172	173	174	175	176	177	178	179	180	181	182	183	184	185	186	187	188	189	190	191	192	193	194	195	196	197	198	199	200	201	202	203	204	205	206	207	208	209	210	211	212	213	214	215	216	217	218	219	220	221	222	223	224	225	226	227	228	229	230	231	232	233	234	235	236	237	238	239	240	241	242	243	244	245	246	247	248	249	250	251	252	253	254	255	256	257	258	259	260	261	262	263	264	265	266	267	268	269	270	271	272	273	274	275	276	277	278	279	280	281	282	283	284	285	286	287	288	289	290	291	292	293	294	295	296	297	298	299	300	301	302	303	304	305	306	307	308	309	310	311	312	313	314	315	316	317	318	319	320	321	322	323	324	325	326	327	328	329	330	331	332	333	334	335	336	337	338	339	340	341	342	343	344	345	346	347	348	349	350	351	352	353	354	355	356	357	358	359	360	361	362	363	364	365	366	367	368	369	370	371	372	373	374	375	376	377	378	379	380	381	382	383	384	385	386	387	388	389	390	391	392	393	394	395	396	397	398	399	400	401	402	403	404	405	406	407	408	409	410	411	412	413	414	415	416	417	418	419	420	421	422	423	424	425	426	427	428	429	430	431	432	433	434	435	436	437	438	439	440	441	442	443	444	445	446	447	448	449	450	451	452	453	454	455	456	457	458	459	460	461	462	463	464	465	466	467	468	469	470	471	472	473	474	475	476	477	478	479	480	481	482	483	484	485	486	487	488	489	490	491	492	493	494	495	496	497	498	499	500	501	502	503	504	505	506	507	508	509	510	511	512	513	514	515	516	517	518	519	520	521	522	523	524	525	526	527	528	529	530	531	532	533	534	535	536	537	538	539	540	541	542	543	544	545	546	547	548	549	550	551	552	553	554	555	556	557	558	559	560	561	562	563	564	565	566	567	568	569	570	571	572	573	574	575	576	577	578	579	580	581	582	583	584	585	586	587	588	589	590	591	592	593	594	595	596	597	598	599	600	601	602	603	604	605	606	607	608	609	610	611	612	613	614	615	616	617	618	619	620	621	622	623	624	625	626	627	628	629	630	631	632	633	634	635	636	637	638	639	640	641	642	643	644	645	646	647	648	649	650	651	652	653	654	655	656	657	658	659	660	661	662	663	664	665	666	667	668	669	670	671	672	673	674	675	676	677	678	679	680	681	682	683	684	685	686	687	688	689	690	691	692	693	694	695	696	697	698	699	700	701	702	703	704	705	706	707	708	709	710	711	712	713	714	715	716	717	718	719	720	721	722	723	724	725	726	727	728	729	730	731	732	733	734	735	736	737	738	739	740	741	742	743	744	745	746	747	748	749	750	751	752	753	754	755	756	757	758	759	760	761	762	763	764	765	766	767	768	769	770	771	772	773	774	775	776	777	778	779	780	781	782	783	784	785	786	787	788	789	790	791	792	793	794	795	796	797	798	799	800	801	802	803	804	805	806	807	808	809	810	811	812	813	814	815	816	817	818	819	820	821	822	823	824	825	826	827	828	829	830	831	832	833	834	835	836	837	838	839	840	841	842	843	844	845	846	847	848	849	850	851	852	853	854	855	856	857	858	859	860	861	862	863	864	865	866	867	868	869	870	871	872	873	874	875	876	877	878	879	880	881	882	883	884	885	886	887	888	889	890	891	892	893	894	895	896	897	898	899	900	901	902	903	904	905	906	907	908	909	910	911	912	913	914	915	916	917	918	919	920	921	922	923	924	925	926	927	928	929	930	931	932	933	934	935	936	937	938	939	940	941	942	943	944	945	946	947	948	949	950	951	952	953	954	955	956	957	958	959	960	961	962	963	964	965	966	967	968	969	970	971	972	973	974	975	976	977	978	979	980	981	982	983	984	985	986	987	988	989	990	991	992	993	994	995	996	997	998	999	1000
-----	-----	-----	-----	-----	-----	-----	-----	-----	-----	-----	-----	-----	-----	-----	-----	-----	-----	-----	-----	-----	-----	-----	-----	-----	-----	-----	-----	-----	-----	-----	-----	-----	-----	-----	-----	-----	-----	-----	-----	-----	-----	-----	-----	-----	-----	-----	-----	-----	-----	-----	-----	-----	-----	-----	-----	-----	-----	-----	-----	-----	-----	-----	-----	-----	-----	-----	-----	-----	-----	-----	-----	-----	-----	-----	-----	-----	-----	-----	-----	-----	-----	-----	-----	-----	-----	-----	-----	-----	-----	-----	-----	-----	-----	-----	-----	-----	-----	-----	-----	-----	-----	-----	-----	-----	-----	-----	-----	-----	-----	-----	-----	-----	-----	-----	-----	-----	-----	-----	-----	-----	-----	-----	-----	-----	-----	-----	-----	-----	-----	-----	-----	-----	-----	-----	-----	-----	-----	-----	-----	-----	-----	-----	-----	-----	-----	-----	-----	-----	-----	-----	-----	-----	-----	-----	-----	-----	-----	-----	-----	-----	-----	-----	-----	-----	-----	-----	-----	-----	-----	-----	-----	-----	-----	-----	-----	-----	-----	-----	-----	-----	-----	-----	-----	-----	-----	-----	-----	-----	-----	-----	-----	-----	-----	-----	-----	-----	-----	-----	-----	-----	-----	-----	-----	-----	-----	-----	-----	-----	-----	-----	-----	-----	-----	-----	-----	-----	-----	-----	-----	-----	-----	-----	-----	-----	-----	-----	-----	-----	-----	-----	-----	-----	-----	-----	-----	-----	-----	-----	-----	-----	-----	-----	-----	-----	-----	-----	-----	-----	-----	-----	-----	-----	-----	-----	-----	-----	-----	-----	-----	-----	-----	-----	-----	-----	-----	-----	-----	-----	-----	-----	-----	-----	-----	-----	-----	-----	-----	-----	-----	-----	-----	-----	-----	-----	-----	-----	-----	-----	-----	-----	-----	-----	-----	-----	-----	-----	-----	-----	-----	-----	-----	-----	-----	-----	-----	-----	-----	-----	-----	-----	-----	-----	-----	-----	-----	-----	-----	-----	-----	-----	-----	-----	-----	-----	-----	-----	-----	-----	-----	-----	-----	-----	-----	-----	-----	-----	-----	-----	-----	-----	-----	-----	-----	-----	-----	-----	-----	-----	-----	-----	-----	-----	-----	-----	-----	-----	-----	-----	-----	-----	-----	-----	-----	-----	-----	-----	-----	-----	-----	-----	-----	-----	-----	-----	-----	-----	-----	-----	-----	-----	-----	-----	-----	-----	-----	-----	-----	-----	-----	-----	-----	-----	-----	-----	-----	-----	-----	-----	-----	-----	-----	-----	-----	-----	-----	-----	-----	-----	-----	-----	-----	-----	-----	-----	-----	-----	-----	-----	-----	-----	-----	-----	-----	-----	-----	-----	-----	-----	-----	-----	-----	-----	-----	-----	-----	-----	-----	-----	-----	-----	-----	-----	-----	-----	-----	-----	-----	-----	-----	-----	-----	-----	-----	-----	-----	-----	-----	-----	-----	-----	-----	-----	-----	-----	-----	-----	-----	-----	-----	-----	-----	-----	-----	-----	-----	-----	-----	-----	-----	-----	-----	-----	-----	-----	-----	-----	-----	-----	-----	-----	-----	-----	-----	-----	-----	-----	-----	-----	-----	-----	-----	-----	-----	-----	-----	-----	-----	-----	-----	-----	-----	-----	-----	-----	-----	-----	-----	-----	-----	-----	-----	-----	-----	-----	-----	-----	-----	-----	-----	-----	-----	-----	-----	-----	-----	-----	-----	-----	-----	-----	-----	-----	-----	-----	-----	-----	-----	-----	-----	-----	-----	-----	-----	-----	-----	-----	-----	-----	-----	-----	-----	-----	-----	-----	-----	-----	-----	-----	-----	-----	-----	-----	-----	-----	-----	-----	-----	-----	-----	-----	-----	-----	-----	-----	-----	-----	-----	-----	-----	-----	-----	-----	-----	-----	-----	-----	-----	-----	-----	-----	-----	-----	-----	-----	-----	-----	-----	-----	-----	-----	-----	-----	-----	-----	-----	-----	-----	-----	-----	-----	-----	-----	-----	-----	-----	-----	-----	-----	-----	-----	-----	-----	-----	-----	-----	-----	-----	-----	-----	-----	-----	-----	-----	-----	-----	-----	-----	-----	-----	-----	-----	-----	-----	-----	-----	-----	-----	-----	-----	-----	-----	-----	-----	-----	-----	-----	-----	-----	-----	-----	-----	-----	-----	-----	-----	-----	-----	-----	-----	-----	-----	-----	-----	-----	-----	-----	-----	-----	-----	-----	-----	-----	-----	-----	-----	-----	-----	-----	-----	-----	-----	-----	-----	-----	-----	-----	-----	-----	-----	-----	-----	-----	-----	-----	-----	-----	-----	-----	-----	-----	-----	-----	-----	-----	-----	-----	-----	-----	-----	-----	-----	-----	-----	-----	-----	-----	-----	-----	-----	-----	-----	-----	-----	-----	-----	-----	-----	-----	-----	-----	-----	-----	-----	-----	-----	-----	-----	-----	-----	-----	-----	-----	-----	-----	-----	-----	-----	-----	-----	-----	-----	-----	-----	-----	-----	-----	-----	-----	-----	-----	-----	-----	-----	-----	-----	-----	-----	-----	-----	-----	-----	-----	-----	-----	-----	-----	-----	-----	-----	-----	-----	-----	-----	-----	-----	-----	-----	-----	-----	-----	-----	-----	-----	-----	-----	-----	-----	-----	-----	-----	-----	-----	-----	-----	-----	-----	-----	-----	-----	-----	-----	-----	-----	-----	-----	-----	-----	-----	-----	-----	-----	-----	-----	-----	-----	-----	-----	-----	-----	-----	-----	-----	-----	-----	-----	-----	-----	-----	-----	-----	-----	-----	-----	-----	-----	-----	-----	-----	-----	-----	-----	-----	-----	-----	-----	-----	-----	-----	-----	-----	-----	-----	-----	-----	-----	-----	-----	-----	-----	-----	-----	-----	-----	-----	-----	-----	-----	-----	-----	-----	-----	-----	-----	-----	-----	-----	-----	-----	-----	-----	-----	-----	-----	-----	-----	-----	-----	-----	-----	-----	-----	-----	-----	-----	-----	-----	-----	-----	-----	-----	-----	-----	-----	-----	-----	-----	-----	-----	-----	-----	-----	-----	-----	-----	-----	-----	-----	-----	-----	-----	-----	-----	-----	-----	-----	-----	-----	-----	-----	-----	-----	-----	-----	-----	-----	-----	-----	-----	-----	-----	-----	-----	-----	-----	-----	-----	-----	-----	-----	-----	-----	------

LEGEND

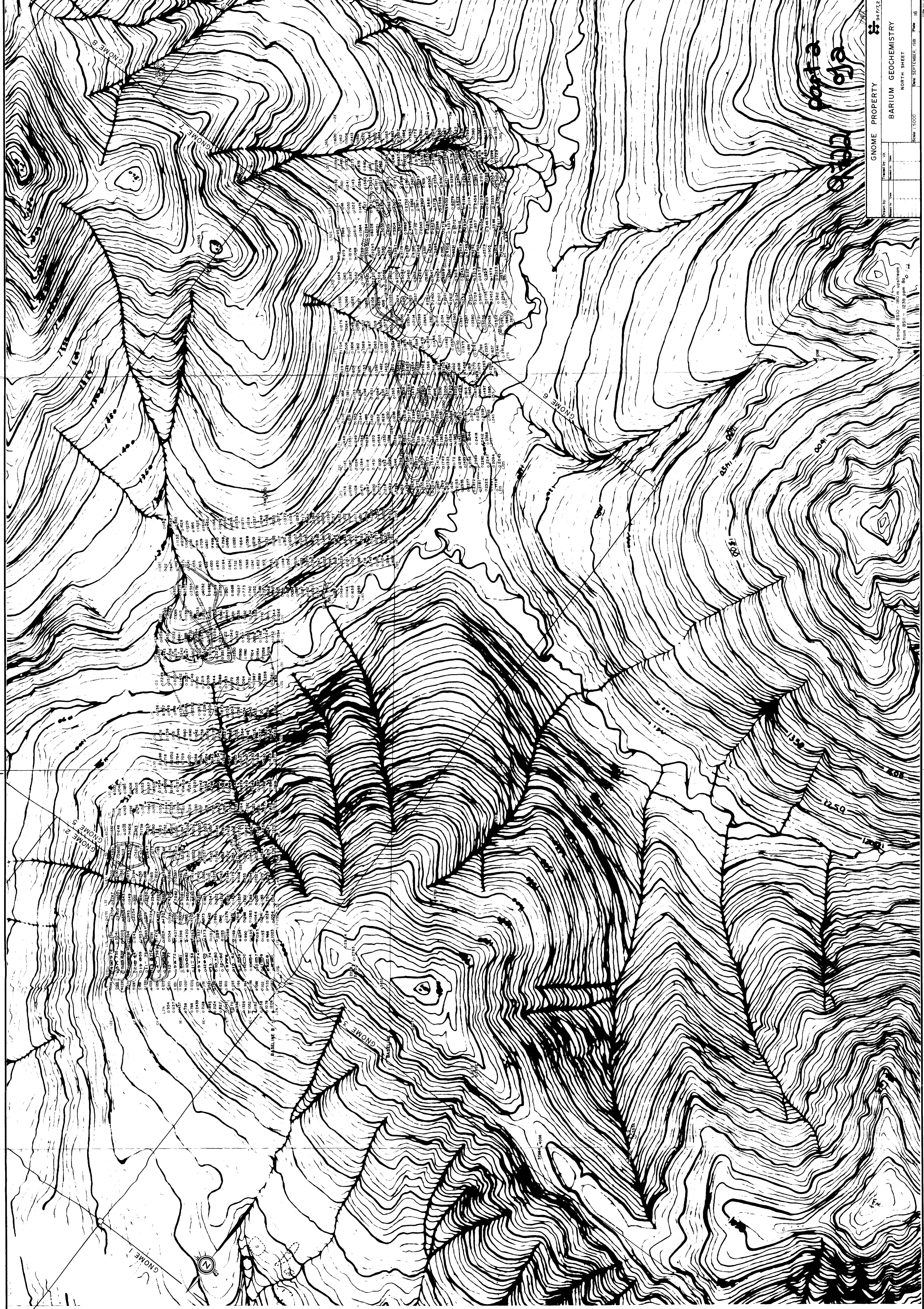
- SOIL
- SILT
- HEAVY
- ROCK
- INSUFFICIENT SAMPLE
- GOSSAN

Contour intervals as shown - in ppm Zn

Geochemical map, to accompany assessment report
 prepared by Virginia M. Kocin,
 1987, October 30, 1987.



GNOME PROPERTY
 ZINC GEOCHEMISTRY
 NORTH SHEET
 SCALE 1:5000
 DATE: SEPTEMBER, 1987
 SHEET 15



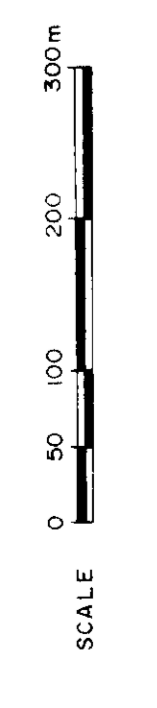
GNOME PROPERTY 941712
 BARIUM GEOCHEMISTRY
 NORTH SHEET
 Scale 1:5000 Date SEPTEMBER 1981

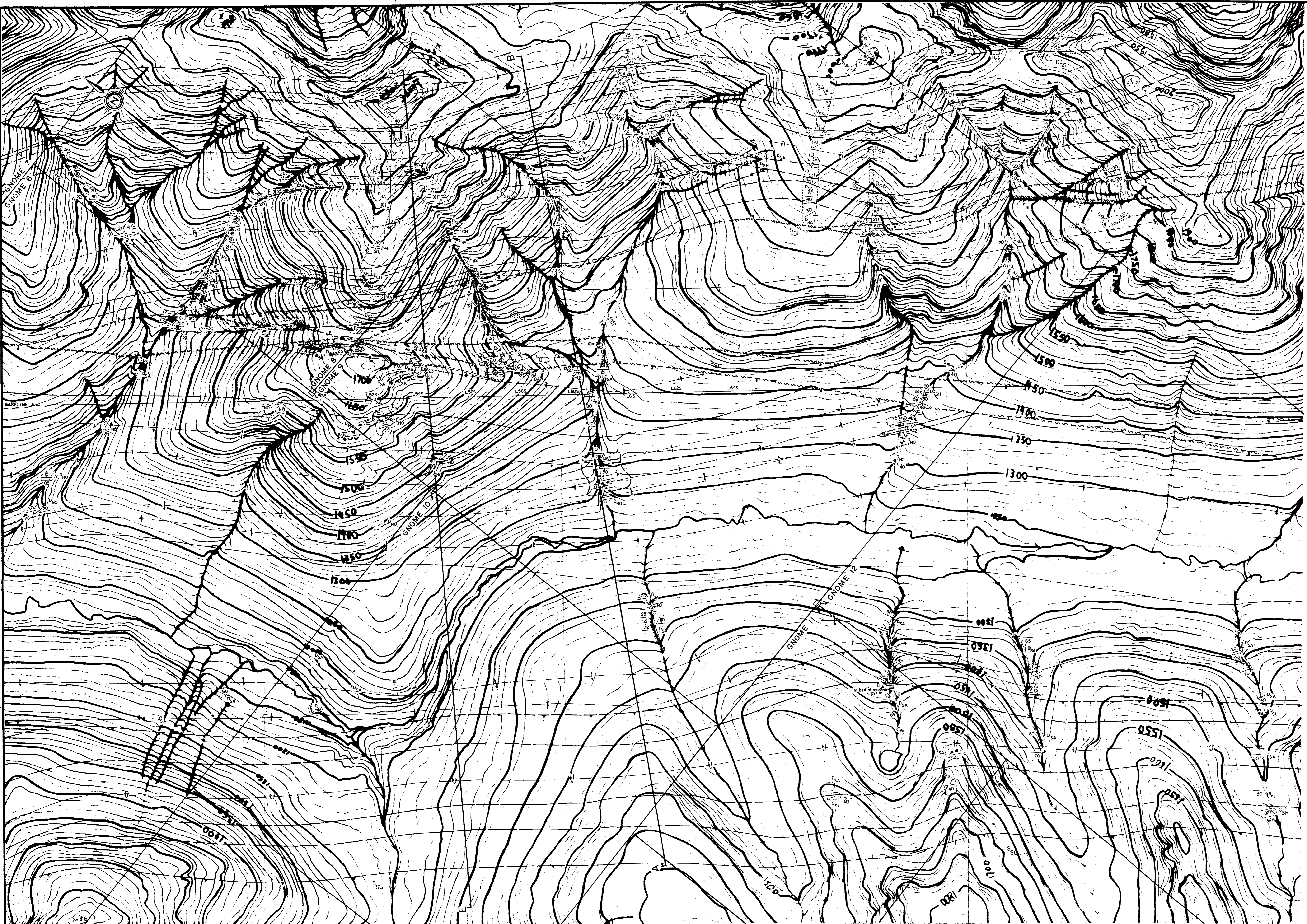
LEGEND

- SOIL ○
- SILT □
- HEAVY △
- ROCK ×
- INSUFFICIENT SAMPLE I
- GOSSAN (G)

Contour intervals as shown - in ft/m

Geotechnical map to accompany assessment report on the GNOME Nos. 1-12 by Virginia M. Kuran, dated October 30, 1981



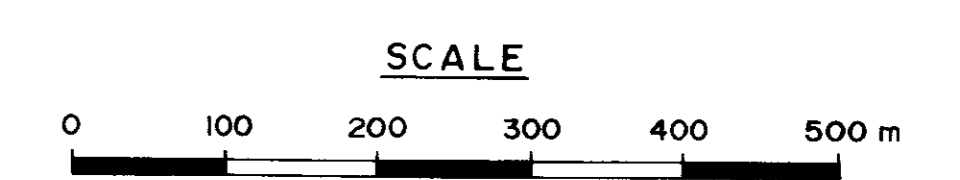


LEGEND

DEVONIAN	
L_{SA}	RESISTANT, BLUE-GREY TO PALE GREEN BLOCKY WEATHERING, THIN TO MEDIUM-BEDDED, THINLY LAMINATED, AMMONITE BEARING; SILICEOUS, BLACK MUDSTONE INTERBEDDED WITH THIN-BEDDED, SILICEOUS, BLACK SHALE
L_{BA3}	RESISTANT, RUSTY BROWN-WEATHERING, THIN-BEDDED, SILICEOUS, BLACK MUDSTONE; CONTAINS BLEBBY TO LAMINATED BARITE AND MINOR PYRITE
L_{NO}	CLIFF FORMING, BLUE-GREY TO BUFF BROWN-WEATHERING, THIN TO MEDIUM-BEDDED, COARSELY LAMINATED, SILICEOUS, BLACK MUDSTONE AND SHALE
D_{BA2}	RESISTANT, GREY-WEATHERING, MEDIUM TO THICK-BEDDED, CHERTY, BLACK MUDSTONE; CONTAINS LAMINATED BLEBBY BARITE AND MINOR DISSEMINATED PYRITE
P_{py}	RESISTANT, GREY TO RUSTY BROWN-WEATHERING, MEDIUM TO THICK-BEDDED, SILICEOUS, BLACK MUDSTONE; CONTAINS DISSEMINATED TO BLEBBY PYRITE AND MINOR BLEBBY BARITE
L_{GT}	RESISTANT, GREY-WEATHERING, THIN TO MEDIUM-BEDDED GREY SILTSTONE INTERBEDDED WITH A GREY TO ORANGE-WEATHERING, MEDIUM-BEDDED GRIT
L_{SH}	RECESSIVE, RUSTY BROWN TO BLUE-BLACK PLATY WEATHERING, SILICEOUS, BLACK SHALE
L_{CH}	RESISTANT, BLUE-GREY TO PALE GREEN-WEATHERING, THIN TO MEDIUM-BEDDED, CHERTY, BLACK MUDSTONE
L_{BA1}	MODERATELY RESISTANT, RUSTY BROWN-WEATHERING, THIN-BEDDED, LAMINATED, BLEBBY BARITE
L_{SS}	CLIFF FORMING, RUSTY BROWN TO BROWNISH ORANGE-WEATHERING, THIN TO MEDIUM-BEDDED, SILICEOUS, BLACK SHALE; OCCASIONALLY TALCY; CONTAINS GREY TO BUFF BROWN WISPY LAMINATIONS AND MINOR BEDS OF ORANGE-WEATHERING SILTSTONE UP TO 1M THICK
L_{LS}	MODERATELY RESISTANT, GREY BLOCKY WEATHERING, MEDIUM-BEDDED, GREYISH-BLACK LIMESTONE; CONTAINS CRINOID RICH DEBRIS FLOWS
SILURIAN	
S_{SL}	CLIFF FORMING, BUFF BROWN TO ORANGE PLATY TO BLOCKY WEATHERING, THIN TO THICK-BEDDED, DOLOMITIC, GREY SILTSTONE
S_{WS}	MODERATELY RESISTANT, GREY TO TAN-WEATHERING, MEDIUM TO THICK-BEDDED, FINE GRAINED BLACK LIMESTONE
ORDOVICIAN	
O_{SH}	MODERATELY RESISTANT, BLUE-GREY PLATY WEATHERING, THIN-BEDDED, GRAPTOLITIC, BLACK SHALE; CONTAINS DICHRANOGAPTUS AND ORTHOGAPTUS (O _{SH}) AND RECESSIVE, BLACK TO RUSTY PLATY WEATHERING, THIN-BEDDED, GRAPHITIC BLACK SHALE
O_V	RESISTANT, ORANGE TO PALE GREEN-WEATHERING, GREY TO PALE GREEN TUFF; VARIABLY CALCAREOUS
CAMBRIAN-ORDOVICIAN	
CK	KECHIKA FORMATION RESISTANT, GREY-BROWN-WEATHERING, THIN TO MEDIUM BEDDED, GREY CALCAREOUS TO LIMY NODULAR SHALE

SYMBOL LIST

	OUTCROP
	GEOLOGICAL BOUNDARY (DEFINED, APPROXIMATE, ASSUMED)
	BEDDING, TOPS KNOWN (HORIZONTAL, INCLINED, VERTICAL, OVERTURNED)
	FOLIATION (HORIZONTAL, INCLINED, VERTICAL)
	LINEATION, AXES OF MINOR FOLDS (HORIZONTAL, INCLINED)
	DRAG FOLD (ARROW INDICATES PLUNGE)
	MINOR FOLD (ARROW INDICATES PLUNGE)
	MULTIPLE FOLD (ARROW INDICATES PLUNGE, INCLINATION OF AXIAL PLANE KNOWN)
	FAULT, ASSUMED (SOLID CIRCLE INDICATES DOWNTROW SIDE)
	THRUST FAULT (APPROXIMATE)
	ANTICLINE (APPROXIMATE, ASSUMED)
	SYNCLINE (APPROXIMATE, ASSUMED)
	ANTICLINE AND SYNCLINE (OVERTURNED)
	ANTICLINE OR SYNCLINE (ARROW INDICATES PLUNGE)
	LOCATION OF CROSS SECTION
	LOCATION OF MEASURED SECTION
	TRENCH
	GOSSAN
	FOSSIL LOCATION FOR AMMONITES
	FOSSIL LOCATION FOR GRAPTOLITES



part 2
of 2 9722

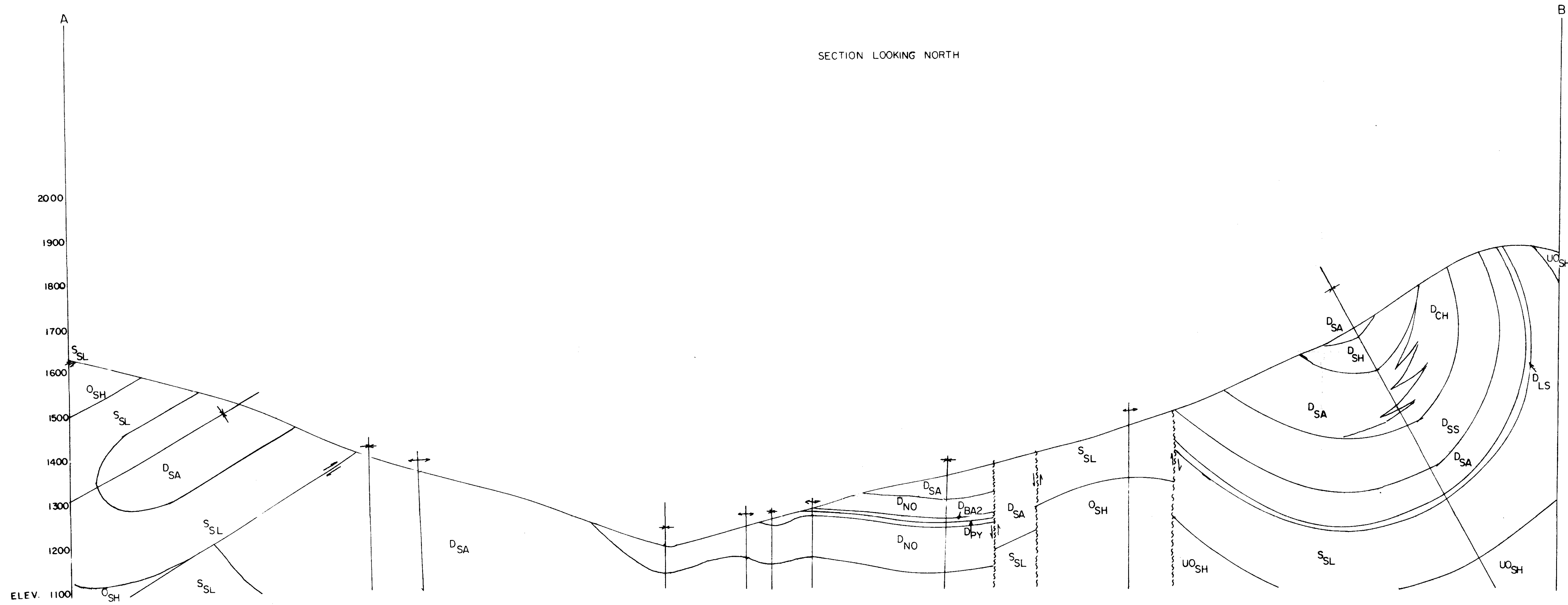
GNOME PROPERTY

Drawn by:	Traced by:
Checked by:	Reviewed by:
Date:	Date:

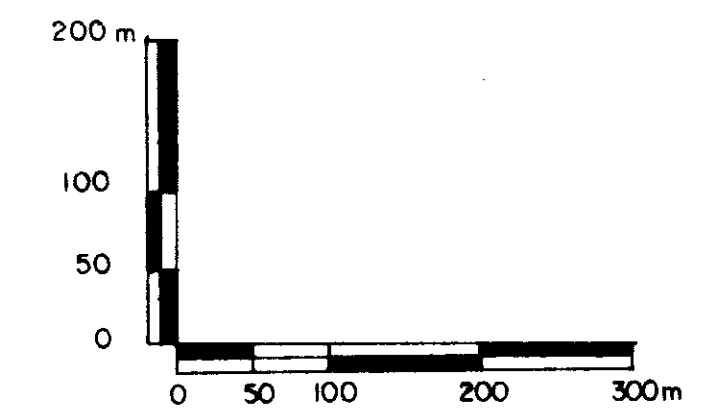
GEOLOGY
SOUTH SHEET

Scale: 1:5000 Date: October, 1981 Plate: 3

SECTION LOOKING NORTH



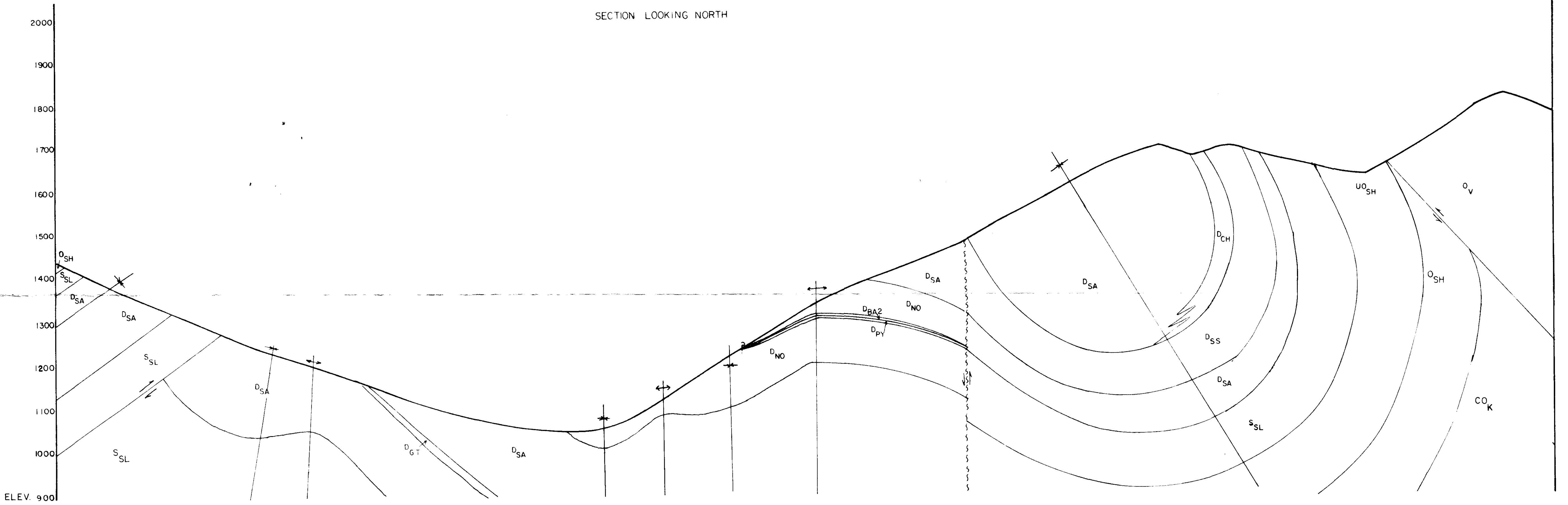
SCALE



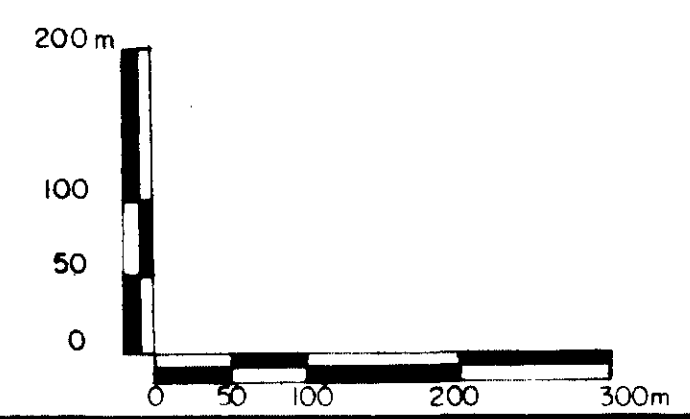
9722
PART 2 OF 2

GNOME PROPERTY				9477,2	
Drawn by: VK		Traced by:		GEOLOGICAL SECTION A-B	
Revised by	Date	Revised by	Date		
Scale: 1:5,000				Date: OCTOBER, 1981	
				Page: 5	

SECTION LOOKING NORTH

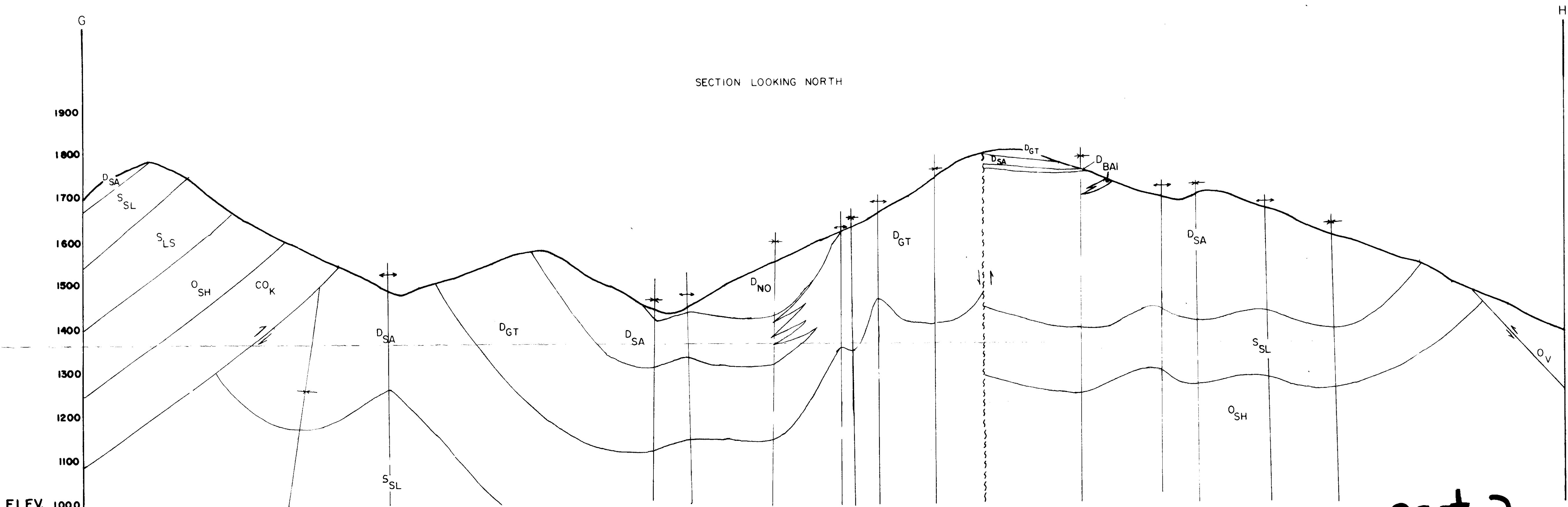


SCALE



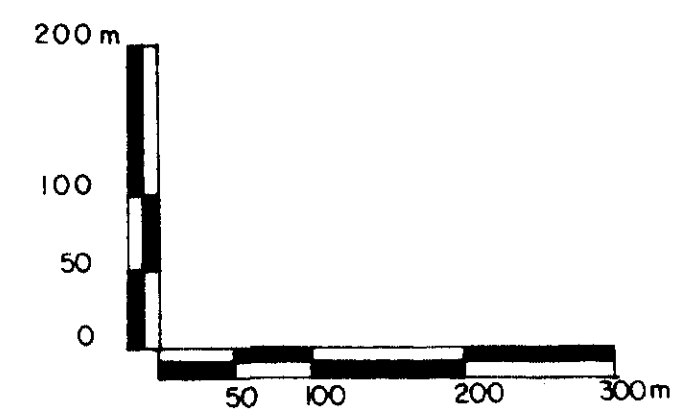
9722 part 2
oja

GNOME PROPERTY				VMK 94F/ 7,2
Drawn by: VK	Traced by: VK		GEOLOGICAL SECTION C-D	
Revised by: _____	Date: _____	Revised by: _____		
Scale: 1"=5,000'			Date: OCTOBER, 1981	Plate: 6



ELEV. 1000

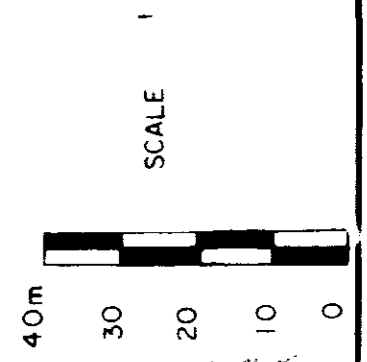
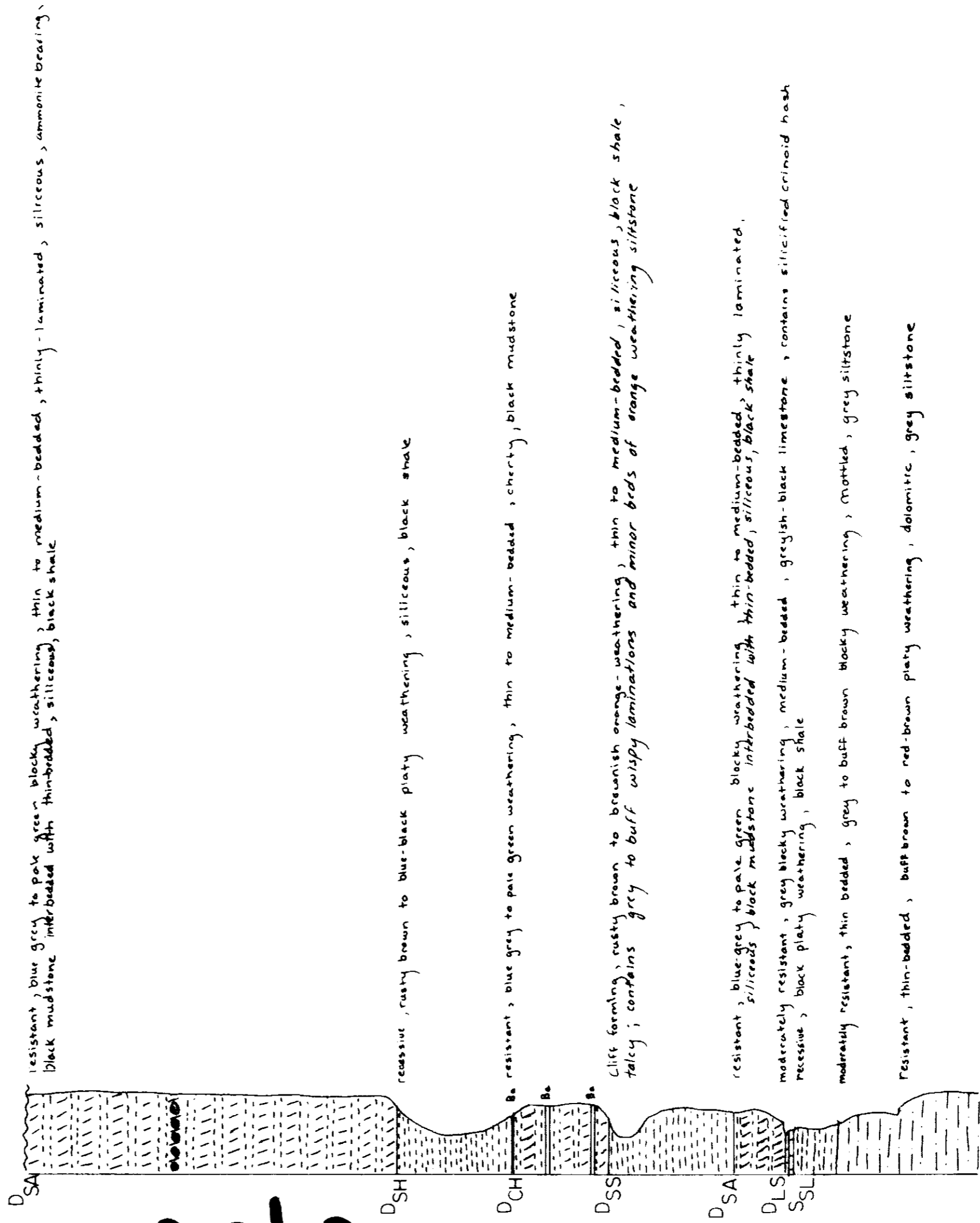
SCALE



9722 part 2 of 2

GNOME PROPERTY				94F/7, 2
Drawn by: VK	Traced by:			GEOLOGICAL SECTION G-H
Revised by	Date	Revised by	Date	
Scale: 1:5,000			Date: OCTOBER, 1981	Plate: 8

MEASURED SECTION I




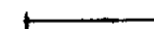

9722 g2 part 2

GNOME PROPERTY				94F/7,2	
Drawn by: VK		Traced by:		MEASURED SECTION I	
Revised by	Date	Revised by	Date		
Scale: 1:1,000		Date: OCTOBER, 1981		Plate: 9	

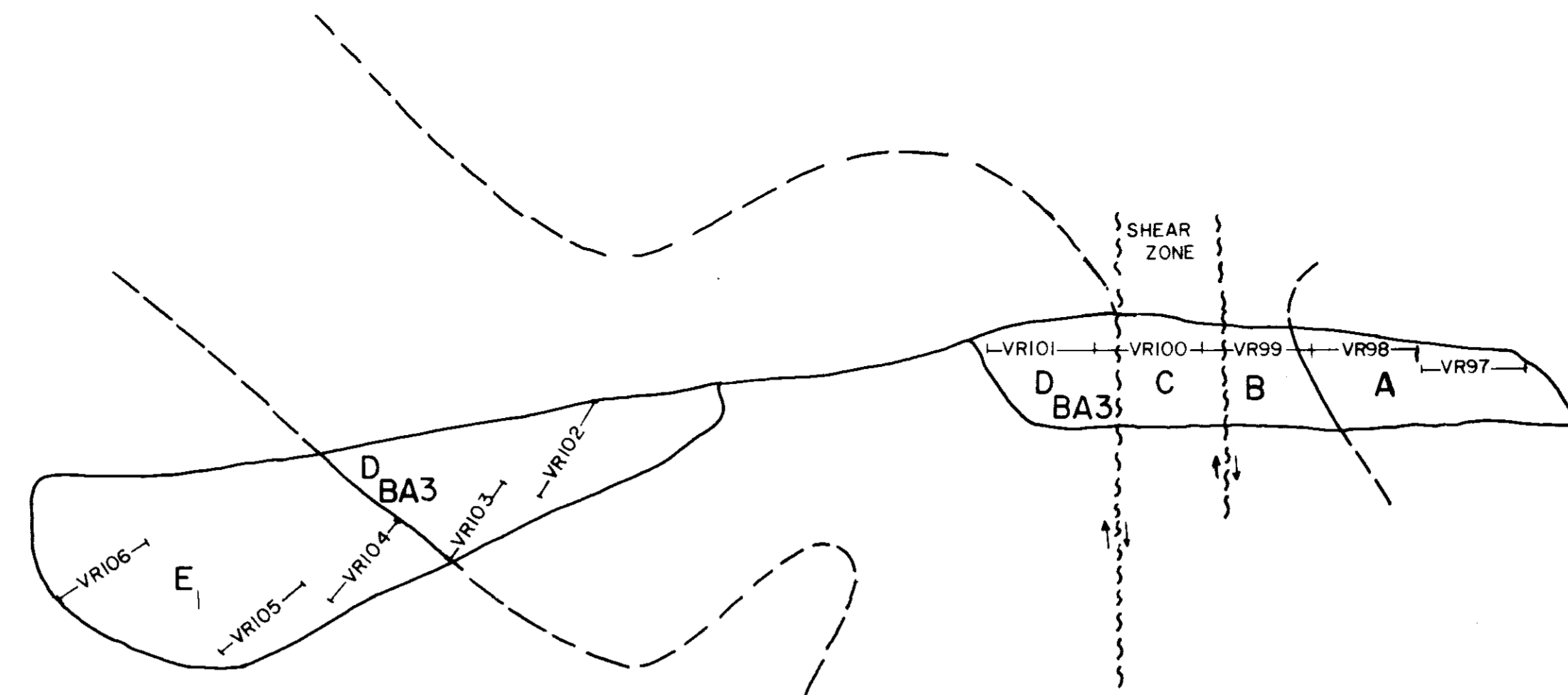
LEGEND

- A buff brown to blue grey weathering, black siliceous shale with thin 1mm wide silt laminations
- B rusty orange to grey weathering, soft black shale with thin silt laminations up to 1cm wide
- C rusty brown weathering, siliceous black shale with minor blebby barite and pyrite
- D BA3 rusty brown to grey weathering, siliceous black shale with laminated to blebby barite and disseminated to blebby pyrite
- E₁ rusty brown weathering, siliceous black shale with 1-2mm wide euhedral pyrite cubes
- E₂ rusty brown weathering, siliceous black shale with finely disseminated pyrite
- F buff brown to blue grey weathering, black siliceous shale with minor jarosite

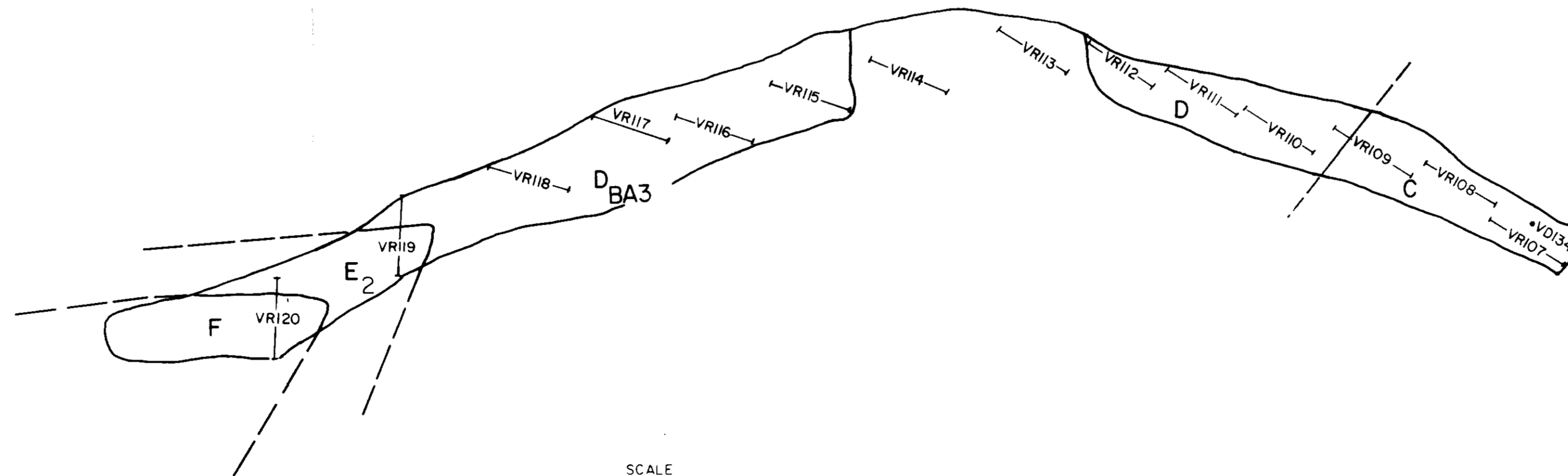
SYMBOL LIST

-  FAULT
-  CHIP SAMPLE
-  CONTACT, known, approximate

TRENCH 1



TRENCH 2

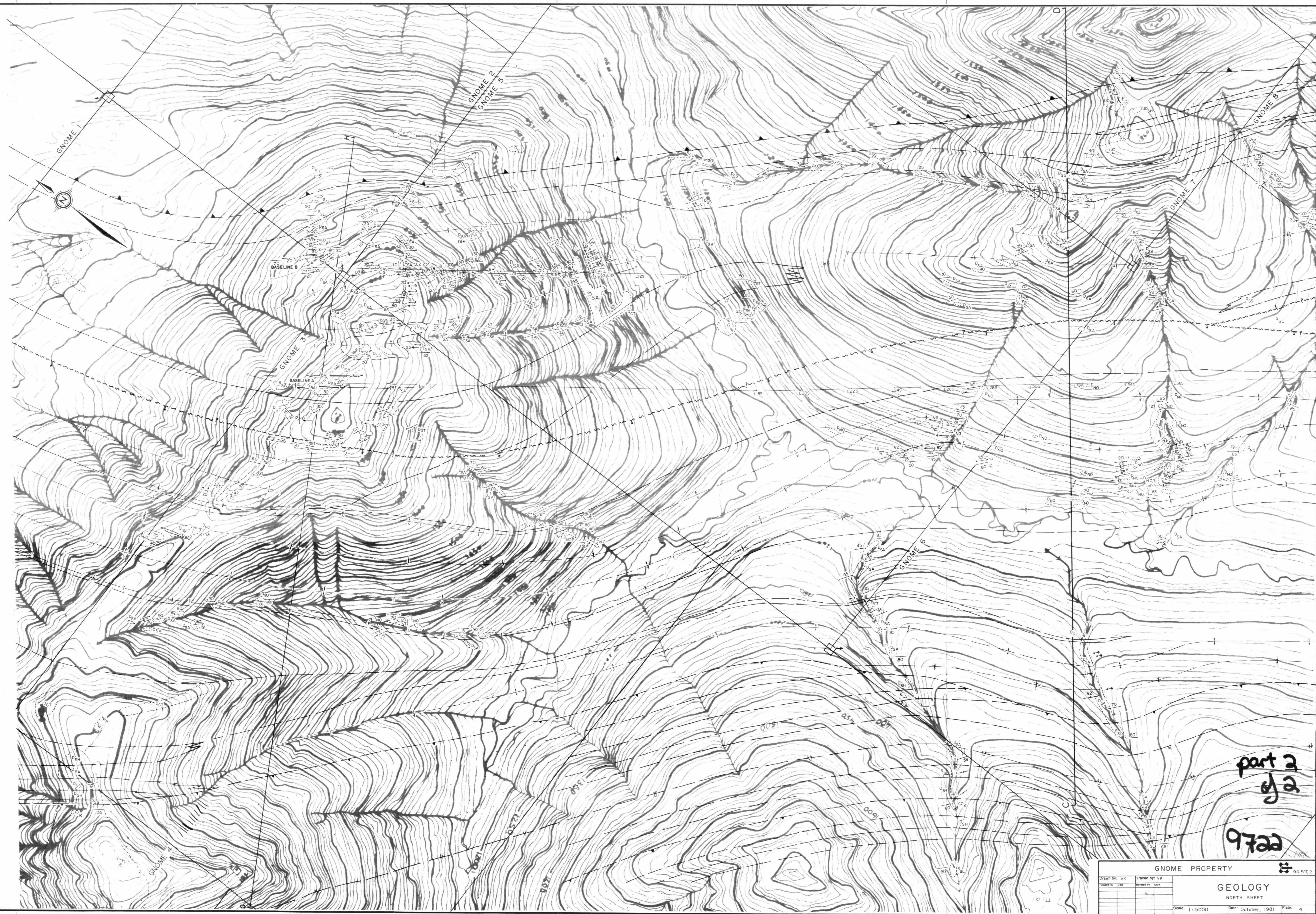
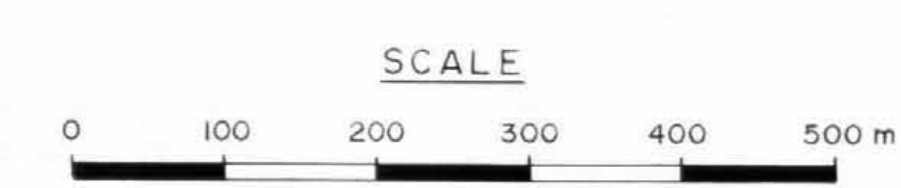


part 2
of 2
9722

GNOME PROPERTY		Vmk 94F/7,2	
Drawn by V.K.	Traced by:	TRENCH 1 and 2 (see plate 3 for locations)	
Revised by:	Revised by:		
		Scale: 1:50	Date: OCTOBER, 1981
			Plate: 10

- DEVONIAN**
- D_{SA} RESISTANT, BLUE-GRAY TO PALE GREEN BLOCKY WEATHERING, THIN TO MEDIUM-BEDDED, THINLY LAMINATED, AMMONITE BEARING; SILICEOUS, BLACK MUDSTONE INTERBEDDED WITH THIN-BEDDED, SILICEOUS, BLACK SHALE
 - D_{BAS} RESISTANT, RUSTY BROWN-WEATHERING, THIN-BEDDED, SILICEOUS, BLACK MUDSTONE; CONTAINS BLEBBY TO LAMINATED BARITE AND MINOR PYRITE
 - D_{NO} CLIFF FORMING, BLUE-GRAY TO BUFF BROWN-WEATHERING, THIN TO MEDIUM-BEDDED, COARSELY LAMINATED, SILICEOUS, BLACK MUDSTONE AND SHALE
 - D_{BAP} RESISTANT, GREY-WEATHERING, MEDIUM TO THICK-BEDDED, CHERTY, BLACK MUDSTONE; CONTAINS LAMINATED BLEBBY BARITE AND MINOR DISSEMINATED PYRITE
 - D_{BY} RESISTANT, GREY TO RUSTY BROWN-WEATHERING, MEDIUM TO THICK-BEDDED, SILICEOUS, BLACK MUDSTONE; CONTAINS DISSEMINATED TO BLEBBY PYRITE AND MINOR BLEBBY BARITE
 - D_{GT} RESISTANT, GREY-WEATHERING, THIN TO MEDIUM-BEDDED GREY SILTSTONE INTERBEDDED WITH A GREY TO ORANGE-WEATHERING, MEDIUM-BEDDED GRIT
 - D_{SH} RECESSIVE, RUSTY BROWN TO BLUE-BLACK PLATY WEATHERING, SILICEOUS, BLACK SHALE
 - D_{CH} RESISTANT, BLUE-GRAY TO PALE GREEN-WEATHERING, THIN TO MEDIUM-BEDDED, CHERTY, BLACK MUDSTONE
 - D_{BAL} MODERATELY RESISTANT, RUSTY BROWN-WEATHERING, THIN-BEDDED, LAMINATED, BLEBBY BARITE
 - D_{SS} CLIFF FORMING, RUSTY BROWN TO BROWNISH ORANGE-WEATHERING, THIN TO MEDIUM-BEDDED, SILICEOUS, BLACK SHALE; OCCASIONALLY TALCY; CONTAINS GREY TO BUFF BROWN WISPY LAMINATIONS AND MINOR BEDS OF ORANGE-WEATHERING SILTSTONE UP TO 1M THICK
- QUINSTEEL FORMATION**
- Q_{LS} MODERATELY RESISTANT, GREY BLOCKY WEATHERING, MEDIUM-BEDDED, GREYISH-BLACK LIMESTONE; CONTAINS CRINOID RICH DEBRIS FLOWS
- SILURIAN**
- S_{SL} CLIFF FORMING, BUFF BROWN TO ORANGE PLATY TO BLOCKY WEATHERING, THIN TO THICK-BEDDED, DOLOMITIC, GREY SILTSTONE
 - S_{LS} MODERATELY RESISTANT, GREY TO TAN-WEATHERING, MEDIUM TO THICK-BEDDED, FINE GRAINED BLACK LIMESTONE
- ORDOVICIAN**
- O_{SH} MODERATELY RESISTANT, BLUE-GRAY PLATY WEATHERING, THIN-BEDDED, GRAPTOLITIC, BLACK SHALE; CONTAINS LICRANOGARTIUS AND URTHOGRAPTUS (U) AND RECESSIVE, BLACK TO RUSTY PLATY WEATHERING, THIN-BEDDED, GRAPTOLITIC BLACK SHALE
 - O_V RESISTANT, ORANGE TO PALE GREEN-WEATHERING, GREY TO PALE GREEN TUFF; VARIABLY CALCREOUS
- CAMBRIAN-ORDOVICIAN**
- EO_K KECHIKA FORMATION
RESISTANT, GREY-BROWN-WEATHERING, THIN TO MEDIUM BEDDED, GREY CALCREOUS TO LIMY NODULAR SHALE

- SYMBOL LIST**
- OUTCROP
 - GEOLOGICAL BOUNDARY (DEFINED, APPROXIMATE, ASSUMED)
 - BEDDING, TOPS KNOWN (HORIZONTAL, INCLINED, VERTICAL, OVERTURNED)
 - FOLIATION (HORIZONTAL, INCLINED, VERTICAL)
 - LINATION, AXES OF MINOR FOLDS (HORIZONTAL, INCLINED)
 - TRAG FOLD (ARROW INDICATES PLUNGE)
 - MINOR FOLD (ARROW INDICATES PLUNGE)
 - MULTIPLE FOLD (ARROW INDICATES PLUNGE, INCLINATION OF AXIAL PLANE KNOWN)
 - FAULT, ASSUMED (SOLID CIRCLE INDICATES DOWNTROW SIDE)
 - THRUST FAULT (APPROXIMATE)
 - ANTICLINE (APPROXIMATE, ASSUMED)
 - SYNCLINE (APPROXIMATE, ASSUMED)
 - ANTICLINE AND SYNCLINE (OVERTURNED)
 - ANTICLINE OR SYNCLINE (ARROW INDICATES PLUNGE)
 - LOCATION OF CROSS SECTION
 - LOCATION OF MEASURED SECTION
 - TRENCH
 - GOSSAN
 - FOSSIL LOCATION FOR AMMONITES
 - FOSSIL LOCATION FOR GRAPTOLITES



part 2
of 2
9722

GNOME PROPERTY

Drawn by: VK	Traced by: VK
Checked by: LK	Checked by: LK

GEOLOGY
NORTH SHEET

Scale: 1:5000 Date: October, 1981 Page: 4