

PROSPECTING, GEOLOGICAL, GEOCHEMICAL AND GEOPHYSICAL REPORT  
ON THE OX CLAIM GROUP

81-#1041-9807

SITUATED 8 KM EAST OF PORT RENFREW

VICTORIA, M.D. BRITISH COLUMBIA

M 92 C/9 W & E

48° 34' N, 124° 17' W

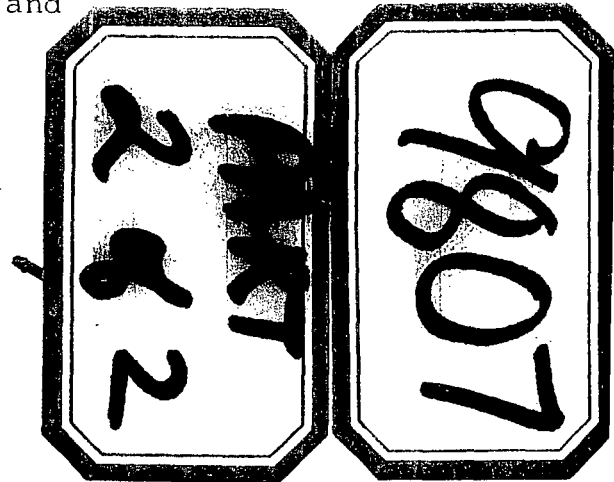
MAPS

Owner : M. Tavela

Operators: M. Tavela, Utah Mines Ltd.,  
Cominco Ltd. and Lacana Mining Corp.

Authors : K. E. Northcote, S.C. Gower and  
M. Tavela

November 1981



LIST OF FIGURES AND MAPS

1.	Claim Map	1:50,000	in text after title
2.	Index, access	1:20,000	in separate folder
3.	Overview	1: 5,000	in separate folder
4.	Geology	1: 5,000	in separate folder
5.	Geology	1: 5,000	in separate folder
6.	Geochemistry 1980	1:20,000	in separate folder
7.	Geochemistry1980/81	1:20,000	in separate folder
8.	Geochemistry1980/81	1: 5,000	in separate folder
9.	Geochemistry 1981	1: 5,000	in separate folder
10.	Archibald Vein	1: 100 1: 500	in separate folder
11.	Au/As diagram		in separate folder
12.	Magnetics	1: 5,000	in separate folder
13.	Magnetics	1: 5,000	in separate folder

OIC 88 13-176

NO STAKING

MSI 65-69

MINERAL RESERVE

OIC 88 13-176

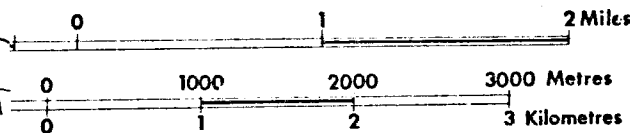
NO STAKING

Province of British Columbia  
Ministry of Energy Mines and Petroleum Resources

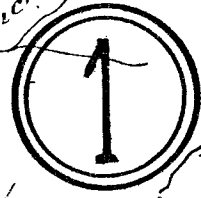
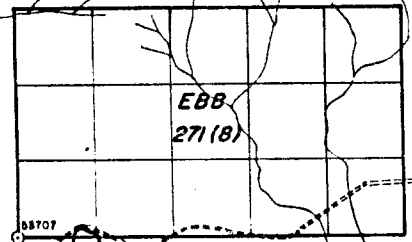
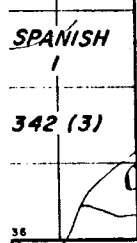
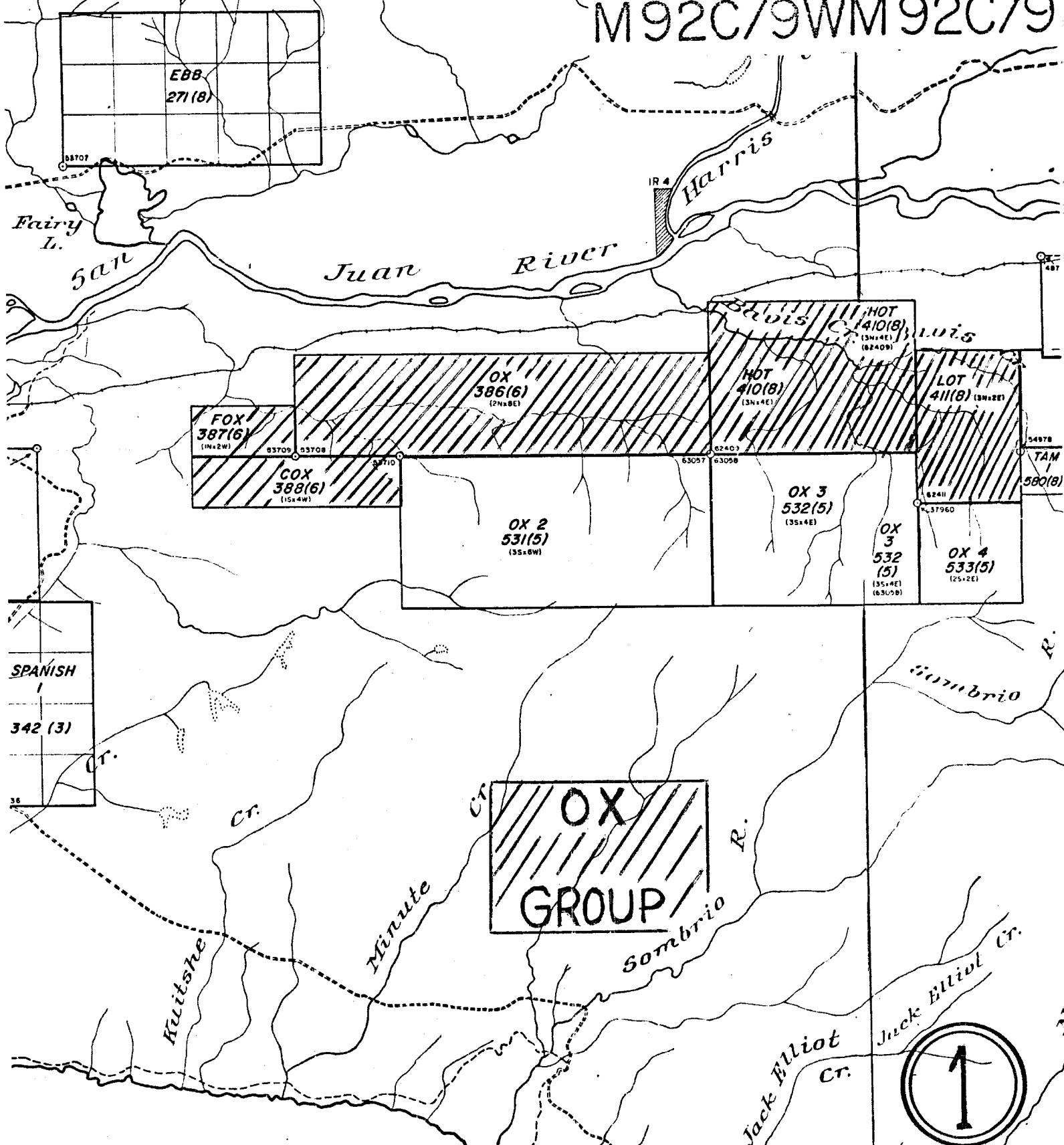
# #9807 Part 2 of 2

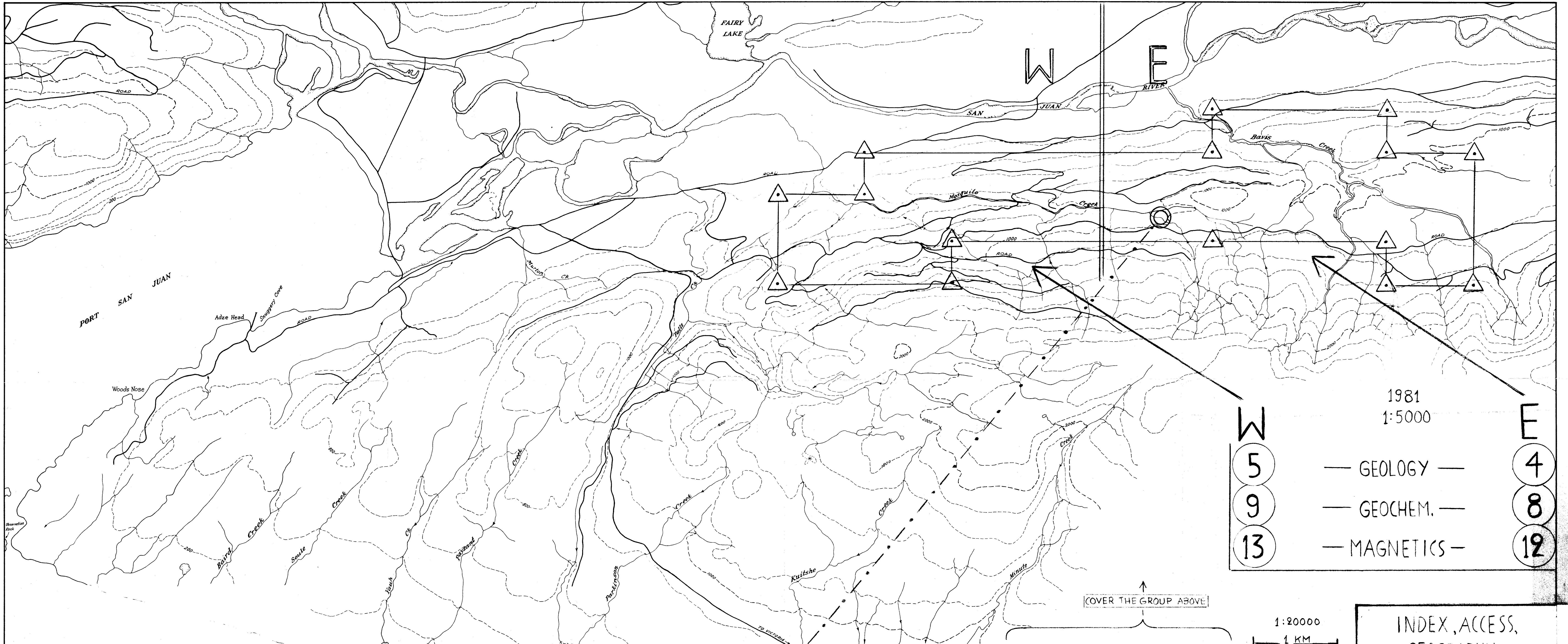
UNLESS VERIFIED OR SURVEYED, THE  
LEGAL CORNER POST IS BASED ON THE LOCATOR'S  
OTHER INFORMATION, APPLY TO THE OFFICE OF THE  
CONCERNED.

DATE OF MICROFILM: 81-10-22 Jc.



## M92C/9WM92C/9





1981  
1:5000

W	5	— GEOLOGY —	4
	9	— GEOCHEM. —	8
	13	— MAGNETICS —	12

↑  
COVER THE GROUP ABOVE

1:20000  
1 KM

MINERAL RESOURCES BRANCH  
ASSESSMENT REPORT  
**9807**  
Page 2 of 2

△ GROUP'S OUTER CORNER POSTS  
1:20000 } BASE: B.C. FOREST PRODUCTS  
1:5000 } LTD'S TRANSIT SURVEY  
1:5000 MAPS ARE SPLIT TO E & W PARTS

10 1:500, 1:100 ARCHIBALD VEIN  
11 Au/As DIAGRAM  
1 CLAIM MAP; IN TEXT

3 1:16000 OVERVIEW 1980  
6 1:20000 GEOCHEM. 1980  
7 1:20000 GEOCHEM. '80/81

INDEX, ACCESS, GEOGRAPHY  
OX CLAIM GROUP

VICTORIA M.D.  
920/0W

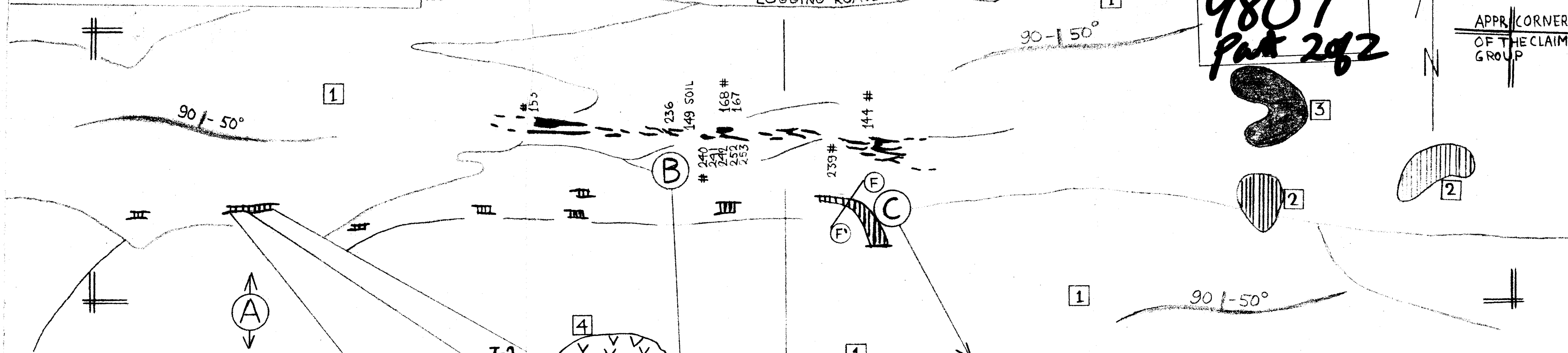
2

NOTE: Contours in feet

THE PLOTTED 28 GOLD VALUES ARE THOSE AMONG OF 162 ROCK SOIL & SILT SAMPLES WHICH TOGETHER WITH GEOLOGY DELINEATE THE VIEWED GOLD BEARING FORMATION

MINERAL RESOURCES BRANCH  
ASSESSMENT REPORT  
**9807**  
**Part 2 of 2**

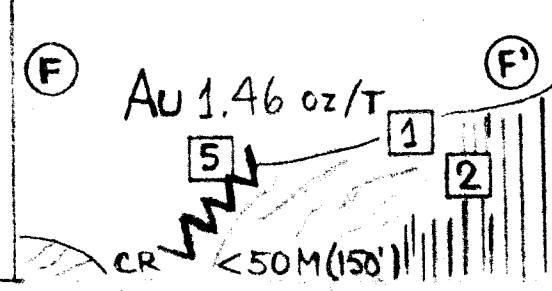
APPR. CORNER  
OF THE CLAIM  
GROUP



**2** DIORITE/ANDESITE COMPOSITE DYKE, FINE GRAIN, LIGHT COLOR. STRIKE E-W, DIP 50° N, OPEN: FIRST SIMILAR 500M (1600') W & 700M (2300') E, WIDTH 1-11M (3-35'). BLASTED TRENCHES. SAMPLING: 60 CM (2') SECTIONS. HIGH ppb's IN OZ/T #243 - 0.25, #248 - 0.15 (= #216 - 0.11, ASSAY)

T-1		T-2		T-3	
243	8000	247	80	245	5
244	110	248	4910	246	30
#	Au	249	215	#	Au
	ppb	250	65		ppb
		251	5		
		65M	5		
		120M			
		→ 200' ←			
		→ 400' ←			

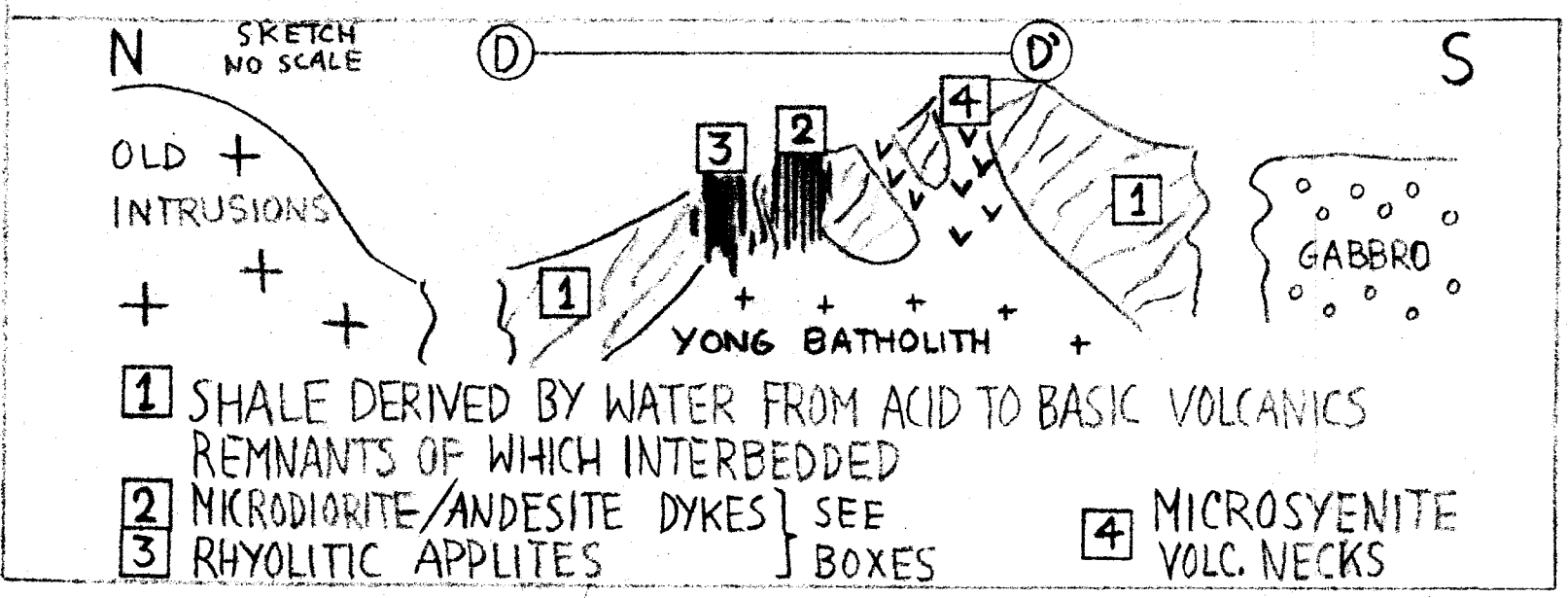
SKETCH NO SCALE



**1** SHALE = COUNTRY ROCK **2** DIORITE ETC. AS IN (A) WIDENING TO 140M (450') FROM WHICH FIVE SELECTED SAMPLES; EACH HAVE Au ~ 5 ppb  
**5** QUARTZ VEIN, 8-17 CM WIDE (3-6"), DIP 90° STRIKE SW, EXPOSED HEIGHT 3.7M (12') WHICH SAMPLED; BELIEVED TO BE INJECTED FROM **2**

**3** COMPOSITE RHYOLITIC APPLITES WITH PARTS SIMILAR TO **2** INTRUDING PENECONCORDANTLY AND INCLUDING **1**. COMPOSITE WIDTH FROM A FEW TO 160M (500')

SELECTED AND GRAB SAMPLING		REPR. SAMPLING BY BLASTING	
# 153	50 ppb Au	# 240	80 ppb Au
236	420	241	10
SOIL 149	80	242	145
168	170	252	20
167	435	253	50
144	90	BASIC VOLC. 239	75



**1** SHALE DERIVED BY WATER FROM ACID TO BASIC VOLCANICS REMNANTS OF WHICH INTERBEDDED  
**2** MIKRODIORITE/ANDESITE DYKES } SEE BOXES  
**3** RHYOLITIC APPLITES }  
**4** MICROSyenite VOLC. NECKS

OVERVIEW  
OX CLAIM GROUP = 40 UNITS  
GEOLOGY AND GOLD GEOCHEM  
FALL 1980

BASE AND SCALE FROM AERIAL PHOTOS ~  
1:16000  
1 KM

VICTORIA  
M.D.  
92C/9W

3



**LITHOLOGY:**

- INTRUSIVE
- APLITE DYKE, SILL
- LEECH RIVER FORMATION
- SLATE - PHYLLITE
- CALCSILICATES
- METASEDIMENTS, SANDSTONE
- METASEDIMENTS, CHERT

**SYMBOLS:**

- OX QUARTZ ( & CARBONATE ) CROSS VEINS
- QL QUARTZ ( & CARBONATE ) LENSIDS
- CRB CARBONATE
- Pyr PYRITE ( Noted only where particularly abundant )
- Pyr PYRROPHITITE
- Asp ARSENOPYRITE
- Mgt MAGNETITE
- Fe sh IRON STAINING

**LEGEND:**

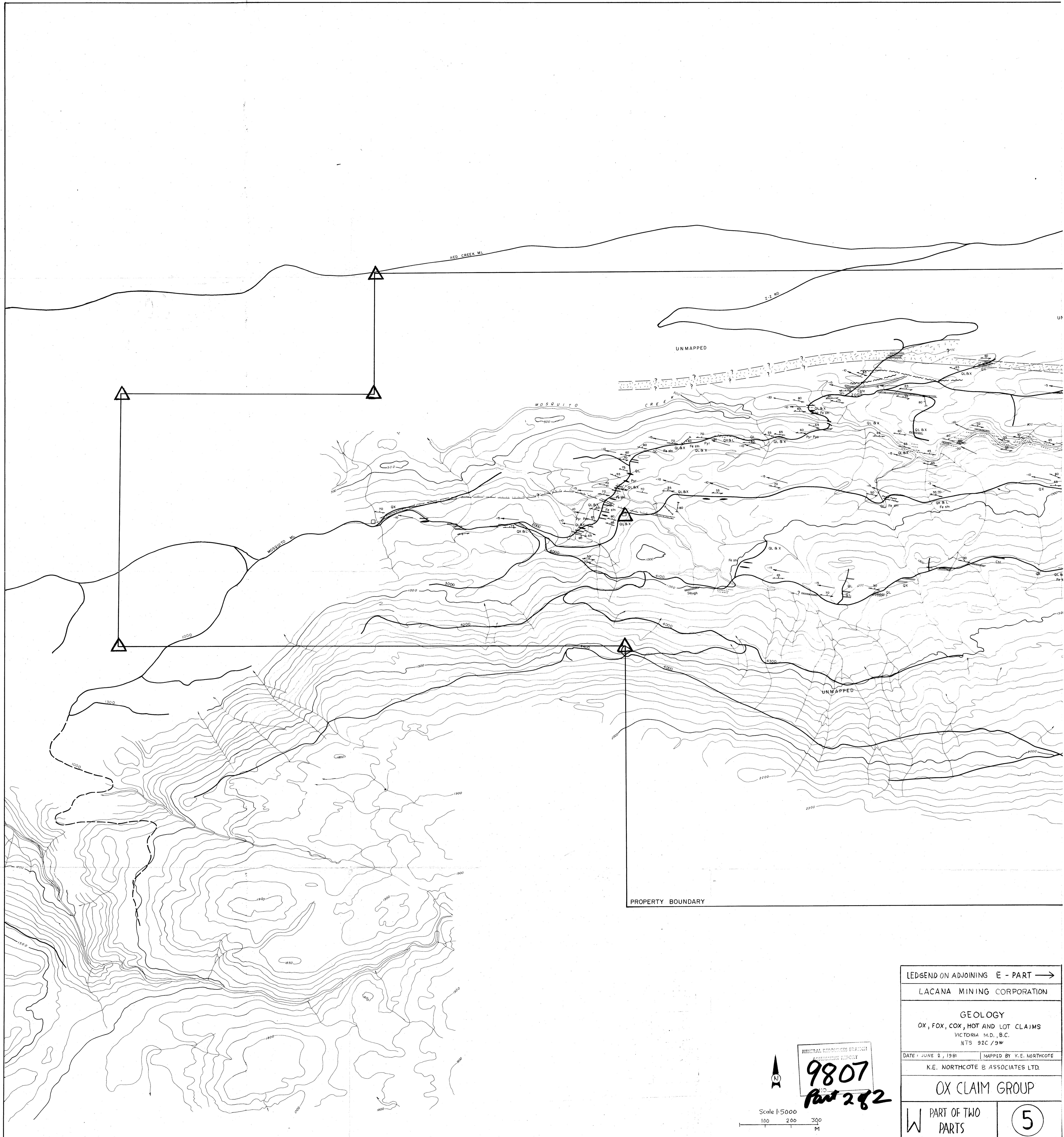
- ROAD
- GEOLOGIC CONTACT
- INTERPRETED GEOLOGIC CONTACT
- SILICEOUS INTERBEDS
- SILICEOUS LENSIDS
- METASEDIMENTARY LENSIDS
- DYKE, SILL OR BED ( Pattern indicates lithology )
- FOLIATION
- LINATION
- SHEAR ZONE
- LEGAL CORNER POST
- GROUPS OUTER CORNER POST

CONTOUR INTERVAL 50 FEET

Scale 1:5000  
 0 100 200 300 METRES  
 0 100 200 300 FEET

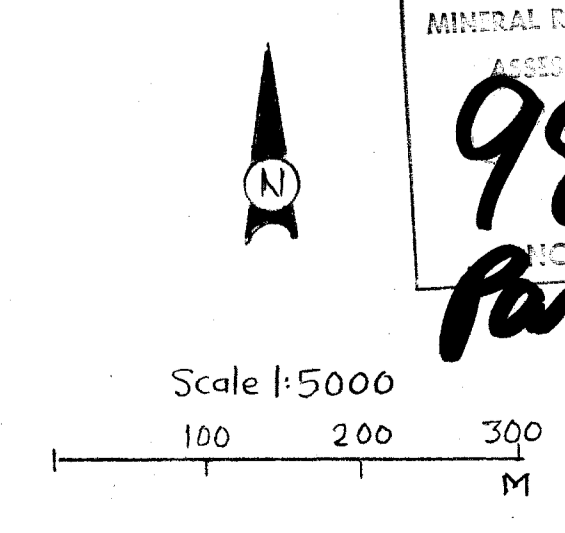
9807  
 Part 2 of 2

LACANA MINING CORPORATION	
GEOLOGY	
OX, FOX, COX, HOT AND LOT CLAIMS	
VICTORIA M.D., B.C.	
NTS 92C/99	
DATE: JUNE 2, 1981	MAPPED BY: K.E. NORTHCOTE
K.E. NORTHCOTE & ASSOCIATES LTD.	
OX CLAIM GROUP	
E PART OF TWO PARTS	4



LEDGEND ON ADJOINING E - PART →	
LACANA MINING CORPORATION	
GEOLOGY	
OX, FOX, COX, HOT AND LOT CLAIMS	
VICTORIA M.D., B.C.	
NTS 92C/9W	
DATE: JUNE 2, 1991	MAPPED BY: K.E. NORTHCOTE
K.E. NORTHCOTE & ASSOCIATES LTD.	
OX CLAIM GROUP	
W PART OF TWO PARTS	5

MINERAL RESOURCES BRANCH  
 REGISTRATION REPORT  
**9807**  
 Part 2 of 2



**Geochemical Lab Report**

FROM: Dr. M. Tavela REPORT NUMBER: 20-499 TO 21-260  
 PROJECT: \_\_\_\_\_ DATE: May 2, 1980 - February 27, 1981

No	AU ppb	No	AU ppb	No	AU ppb	No	AU ppb
R-127	10	147	5	194	<5	173	10
128	5	152	5	195	<5	174	5
129	5	153	50	196	5	175	<5
130	<5	R-199	5	165 ROCK	<5	176	10
131	<5	200	5	275	<5	177	5
132	10	202	5	276	5	178	<5
133	5	203	<5	277	5	179	20
134	5	191 ROCK	>10000	278	<5	180	145
135	10	R-169	5	279	<5	181	<5
136	145	171	10	280	<5	182	<5
137	<5	172	<5	281	<5	183	<5
138	10	182	<5	282	<5	184	<5
139	10	183	<5	283	<5	185	10
140	10	184	5	284	<5	186	<5
141	10	185	10	285	5	187	<5
142	5	186	5	286	5	188	<5
145	10	187	<5	287	<5	189	<5
146	5	188	<5	288	5	190	<5
148	5	189	<5	289	<5	191 ROCKS	435
149	80	190	<5	290	<5	168	170
150	10	167 ROCKS	435	291	<5	191A	30
151	5	168	170	292	<5	R-181	5
154	10	191A	30	293	5	241 ROCKS	145
143 ROCKS	5	R-181	5	294	5	242	10
144	90	193	5	295	<5	243	15
						244	10
						245	20

LAB REPORT Nos  
 20-499  
 -589  
 -608  
 -623  
 -607  
 -2259  
 -2352  
 -2589  
 -2671  
 21-260  
 A 20-567  
 A 20-1672

SAMPLE NO.	Cu ppm	Pb ppm	Zn ppm	Mo ppm	Ag ppm	Co ppm	As ppm	Bi ppm	REMARKS
R-191	2	60	16	<1	3.1	23	>1000	7	

MARKED	GOLD		SILVER	
	Ounces per Ton	Grams per Metric Ton	Ounces per Ton	Grams per Metric Ton
R-216	0.11		0.11	
278	1.46			

6/A

THIS DOCUMENT, OR ANY PART THEREOF, MAY NOT BE REPRODUCED FOR PROMOTIONAL OR ADVERTISING PURPOSES.

SAMPLE RECEIVED FROM: MATTI TAVELA  
 ADDRESS: #1 - 2230 Harrison Drive, Vancouver, B.C. V5P 2P6

LABORATORY NO.	SUBMITTER'S MARK	LABORATORY REPORT
3769	5611 R-247	Spectrographic Analysis: 0.1% Arsenic
3770	5612 R-248	Spectrographic Analysis: 0.75% Arsenic
3771	5613 R-249	Spectrographic Analysis: 0.75% Arsenic
3772	5614 R-250	Spectrographic Analysis: 0.15% Arsenic
3774	5616 R-228	Spectrographic Analysis: 0.15% Arsenic
3778	5620 R-233	Spectrographic Analysis: 0.01% Copper
3779	5621 R-234	Spectrographic Analysis: 0.1% Nickel; 0.12% Copper; 0.1% Chromium and 0.02% Cobalt
3781	5623 R-236	Spectrographic Analysis: 0.1% Arsenic

3773	5615 R-251	3775	5617 R-230
3776	5618 R-231	3777	5619 R-232
		3780	5622 R-235

Spectrographic Analysis: The only base metals found, and their percentages, were those occurring normally in rocks.

4286	5634 - 115	Spectrographic Analysis: 0.2% Copper; 0.15% Nickel; 0.025% Cobalt and 1% Chromium
4288	5636 - 270	Spectrographic Analysis: 0.2% Copper; 0.05% Cobalt; greater than 4% Phosphorus and a trace of Nickel were found. The Spectrographic Analysis: 0.01% Copper and traces of Cobalt and Nickel were found.
4289	5637 - 271	Spectrographic Analysis: 0.04% Copper; 0.01% Nickel and 0.01% Cobalt were found.
4290	5638 - 272	Spectrographic Analysis: 0.01% Copper and traces of Nickel and Cobalt were found.
4291	5639 - 273	Spectrographic Analysis: 0.2% Copper; 0.015% Cobalt and a trace of Nickel were found.
4292	5640 - 274	Spectrographic Analysis: 0.12% Cobalt; 0.03% Copper and a trace of Nickel were found.
4293	5811 - 284	

BC PROSPECTOR **COMINCO**

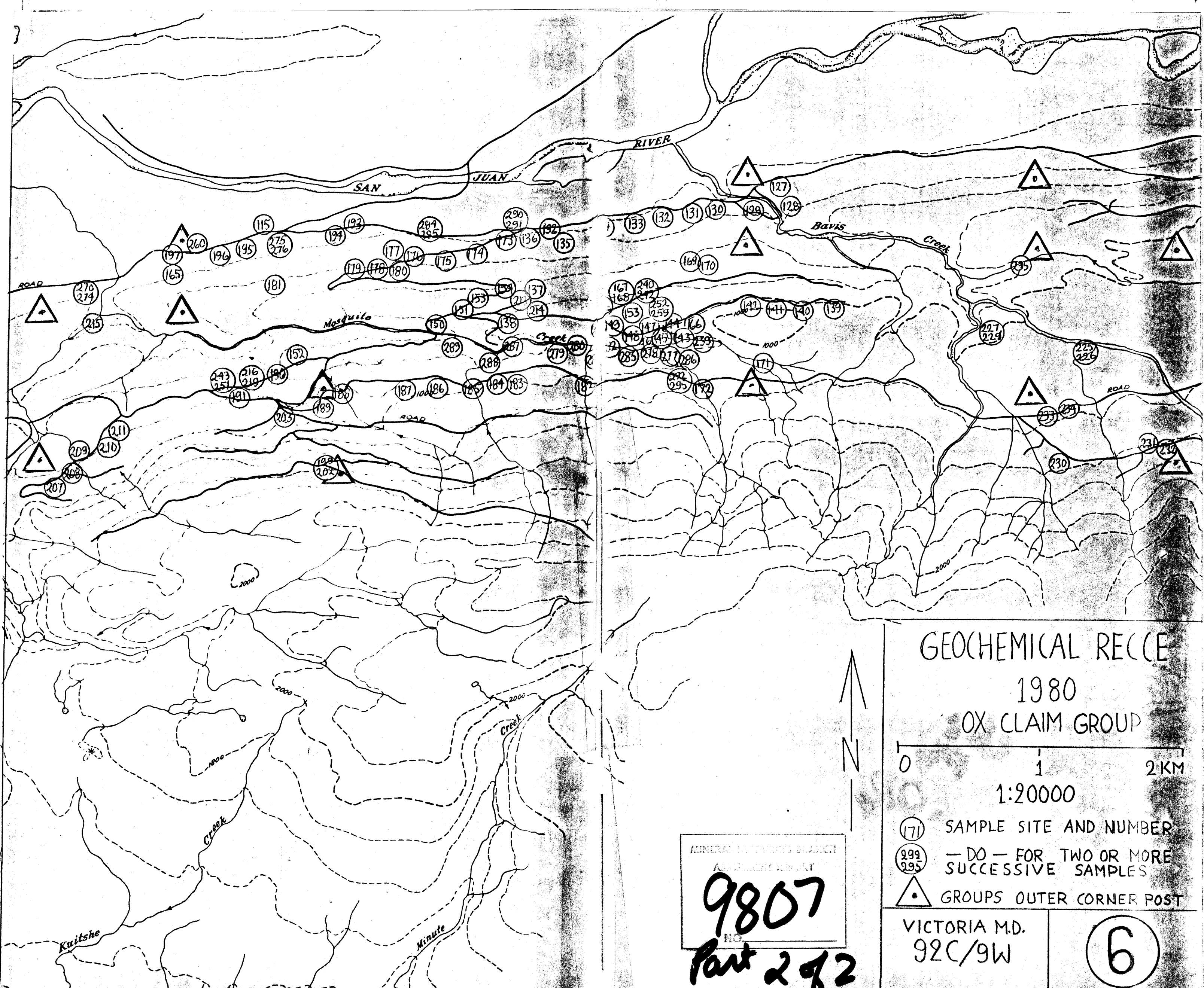
REPORTING DATE: 8 JUL 1981

SAMPLE NUMBER	FIELD NUMBER	AG ppm	AU ppm
R81 07808	4276 (157)	<.4	16
R81 07809	4278 (261)	<.4	<10
R81 07810	4286 115	<.4	<10
R81 07811	4287 (269)	<.4	<10
R81 07812	4288 270	<.4	<10
R81 07813	4289 271	<.4	<10
R81 07814	4290 272	<.4	<10
R81 07815	4271 273	0.6	<10
R81 07816	4292 274	<.4	<10
R81 07817	4293 284	<.4	<10

OUTSIDE OF CLAIM GROUP

3-DIGIT SAMPLE NO. USED ON MAPS

6/B

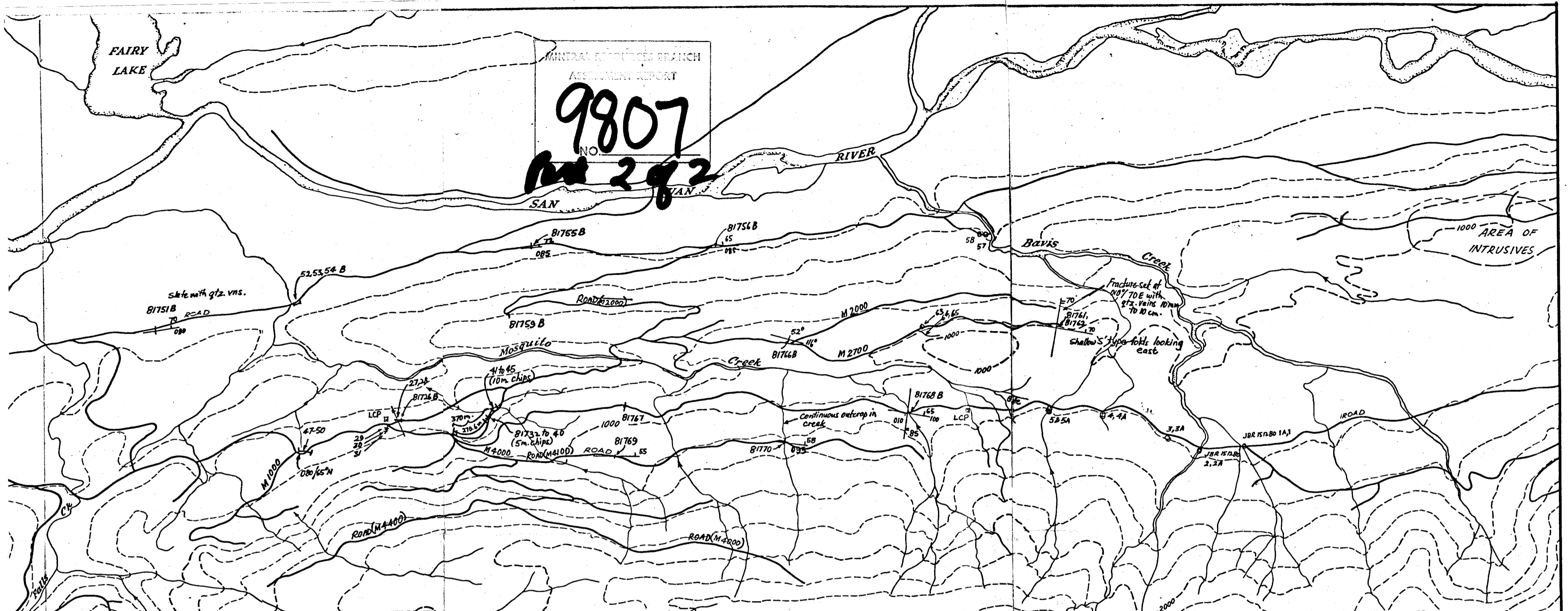




FAIRY LAKE

MINERAL RESOURCES BRANCH  
ASSESSMENT REPORT

9807  
NO. 292



**Silt Samples**

Sample description	Prep code	Ag ppm	As ppm	Au - (AA) ppb
JBR-15128C-2	202	0.1	45	<10
JBR-15128C-3	202	0.1	19	<10
JBR-15128C-4	202	0.1	16	<10
JBR-15128C-5	202	0.1	16	<10
JBR-15128C-6	202	0.1	23	<10
JBR-15128C-2A	202	0.1	22	<10
JBR-15128C-3A	202	0.1	20	<10
JBR-15128C-4A	202	0.1	23	<10
JBR-15128C-5A	202	0.1	17	<10
JBR-15128C-6A	202	0.1	38	<10
JBR-16128C-1	202	0.1	38	<10
JBR-16128C-1A	202	0.1	27	<10
JBR-16128C-1B	202	0.1	25	<10
JBR-16128C-1C	202	0.1	11	<10

**Rock Geochem**

Sample description	Prep code	Ag ppm	Au - (AA) ppb
AJS-15128C-1	205	2.6	40
AJS-15128C-2	205	0.4	20
AJS-16128C-1	205	0.2	80
AJS-16128C-2	205	0.1	<10
AJS-16128C-3	205	0.1	<10
AJS-16128C-4	205	0.1	<10
AJS-16128C-5	205	0.8	5500
AJS-16128C-6	205	20.0	1750
AJS-16128C-7	205	0.6	<10
AJS-16128C-8	205	0.1	<10
AJS-16128C-9	205	0.2	10
AJS-16128C-10	205	0.6	260
AJS-16128C-11	205	0.2	<10

Sample description	Prep code	Ag oz/t	Au - (AA) oz/t
AJS-161280-5	214	0.06	0.154
AJS-161280-6	214	1.72	0.086
81718	205	0.1	<10
81719	205	0.1	<10
81720	205	0.1	<10
81721	205	0.1	<10
81722	205	0.1	<10
81723	205	0.1	<10
81724	205	0.2	<10
81725	205	0.1	<10
81726	205	0.1	<10
81727	205	0.1	<10

81728	205	0.1	<10
81729	205	0.1	<10
81730	205	0.1	<10
81731	205	0.1	<10
81732	205	0.1	<10
81733	205	0.1	<10
81734	205	0.1	<10
81735	205	0.1	<10
81736	205	0.1	<10
81737	205	0.1	<10
81738	205	0.1	<10
81739	205	0.1	<10
81740	205	0.1	<10
81741	205	0.1	<10
81742	205	0.1	<10

81743	205	0.1	<10
81744	205	0.1	<10
81745	205	0.1	<10
81746	205	0.1	<10
81747	205	0.1	<10
81748	205	0.1	<10
81749	205	0.1	<10
81750	205	0.1	<10
81751	205	0.1	<10
81752	205	0.1	<10
81753	205	0.1	<10
81754	205	0.1	<10
81755	205	0.2	<10
81756	205	0.1	<10
81757	205	0.2	<10

Sample description	Prep code	Ag ppm	Au - (AA) ppb
81758	205	0.1	<10
81759	205	0.1	<10
81760	205	0.1	<10
81761	205	0.1	<10
81762	205	0.1	<10
81763	205	0.1	<10
81764	205	0.1	<10
81765	205	0.1	<10
81766	205	0.1	<10
81767	205	0.1	<10
81768	205	0.1	<10
81769	205	0.1	<10
81770	205	0.1	<10

**UTAH MINES LTD.**  
EXPLORATION DEPARTMENT  
Vancouver British Columbia

**ARRETTE PROSPECT**  
**SAMPLE LOCATIONS**  
**& VALUES**

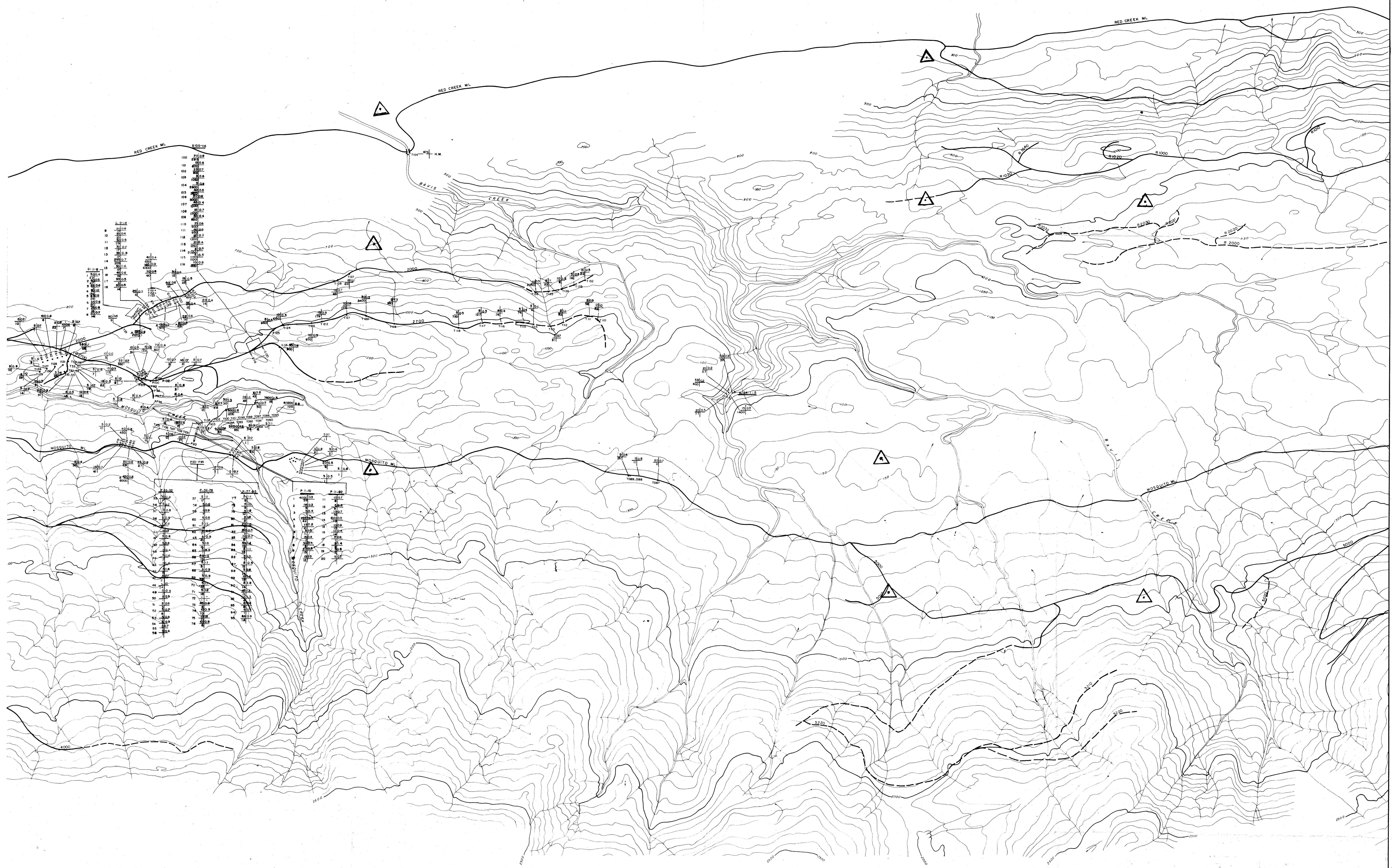
Work by: [ ] Date: Jan '81 Dec '80 NTS Ref. 92-c-9  
Drawn by: R.N. Gopal Revised: [ ]

SCALE 1:20,000  
METRES 200 0 200 400 600 800 1000 METRES

**OX CLEIM GROUP**

VICTORIA M.D.  
92C/9W

7



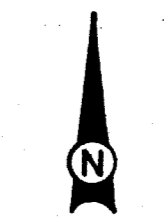
1	100	20.0
2	100	20.0
3	100	20.0
4	100	20.0
5	100	20.0
6	100	20.0
7	100	20.0
8	100	20.0
9	100	20.0
10	100	20.0
11	100	20.0
12	100	20.0
13	100	20.0
14	100	20.0
15	100	20.0
16	100	20.0
17	100	20.0
18	100	20.0
19	100	20.0
20	100	20.0
21	100	20.0
22	100	20.0
23	100	20.0
24	100	20.0
25	100	20.0
26	100	20.0
27	100	20.0
28	100	20.0
29	100	20.0
30	100	20.0
31	100	20.0
32	100	20.0
33	100	20.0
34	100	20.0
35	100	20.0
36	100	20.0
37	100	20.0
38	100	20.0
39	100	20.0
40	100	20.0
41	100	20.0
42	100	20.0
43	100	20.0
44	100	20.0
45	100	20.0
46	100	20.0
47	100	20.0
48	100	20.0
49	100	20.0
50	100	20.0
51	100	20.0
52	100	20.0
53	100	20.0
54	100	20.0
55	100	20.0
56	100	20.0
57	100	20.0
58	100	20.0
59	100	20.0
60	100	20.0
61	100	20.0
62	100	20.0
63	100	20.0
64	100	20.0
65	100	20.0
66	100	20.0
67	100	20.0
68	100	20.0
69	100	20.0
70	100	20.0
71	100	20.0
72	100	20.0
73	100	20.0
74	100	20.0
75	100	20.0
76	100	20.0
77	100	20.0
78	100	20.0
79	100	20.0
80	100	20.0
81	100	20.0
82	100	20.0
83	100	20.0
84	100	20.0
85	100	20.0
86	100	20.0
87	100	20.0
88	100	20.0
89	100	20.0
90	100	20.0
91	100	20.0
92	100	20.0
93	100	20.0
94	100	20.0
95	100	20.0
96	100	20.0
97	100	20.0
98	100	20.0
99	100	20.0
100	100	20.0

LEGEND  
 --- ROAD  
 132 SAMPLE NUMBER  
 \* SAMPLE LOCATION  
 1/16 1/16 ASSAY VALUE

NOTE: Sample numbers are observed as follow --  
 081-088 to 088  
 181-187 to 187  
 281-288 to 288

CONTOUR INTERVAL 50 FEET

9807  
 Part 2 of 2



Scale 1:5000  
 0 100 200 300 METRES  
 0 500 1000 FEET

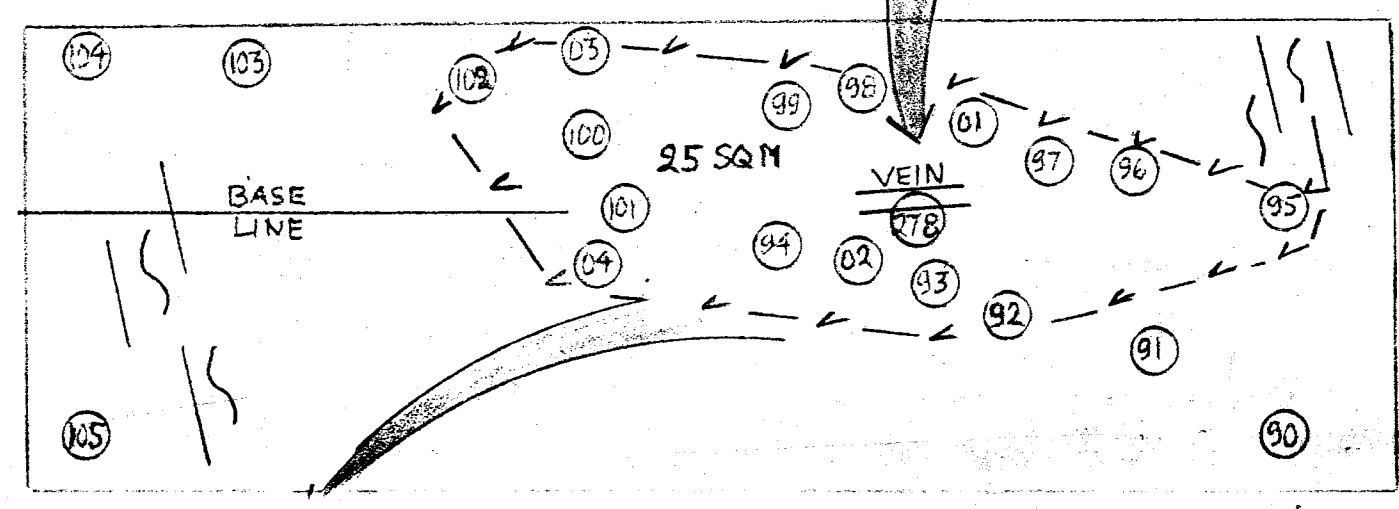
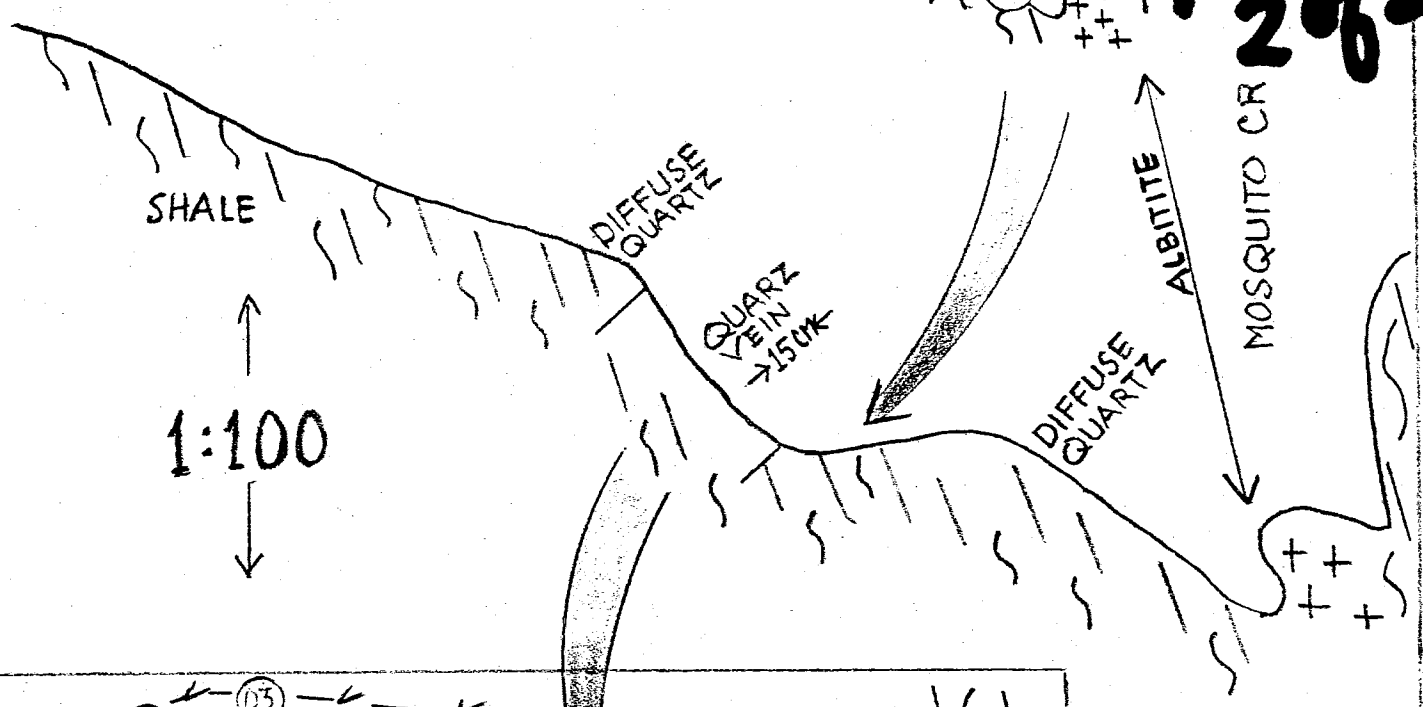
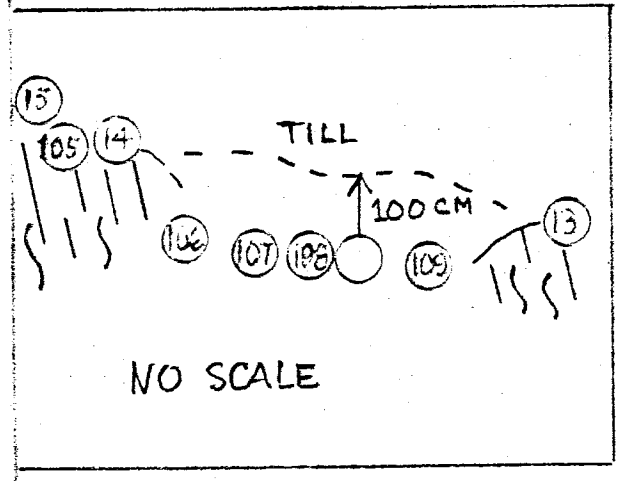
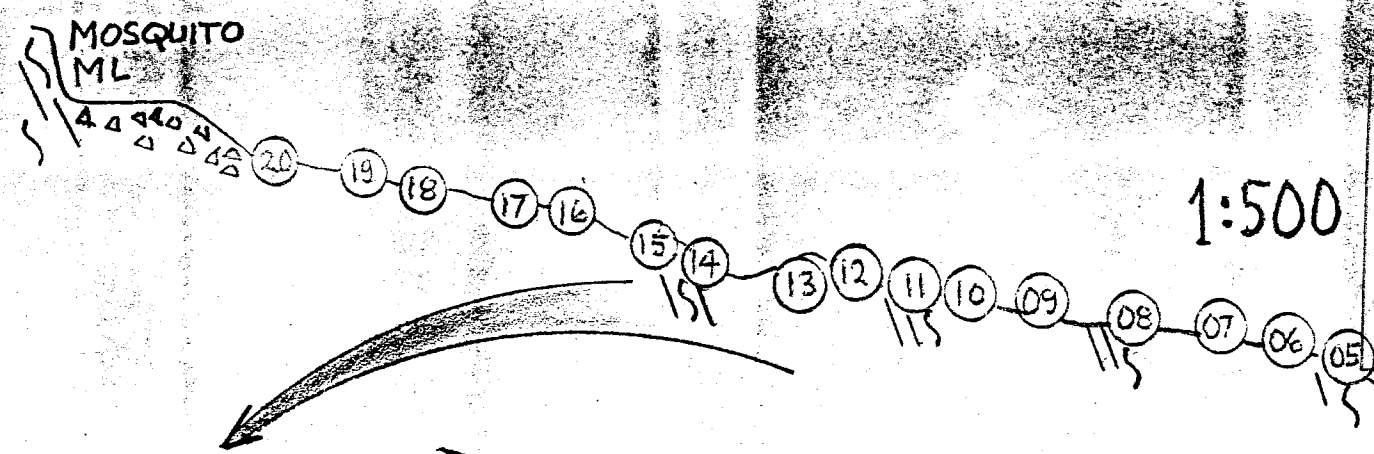
GROUPS OUTER CORNER POSTS

LACANA MINING CORPORATION	
ROCK GEOCHEMISTRY	
OX, FOX, COX, HOT AND LOT CLAIMS	
VICTORIA M.D., B.C.	
NTS 92C/9W	
DATE JUNE 23, 1991	
SAMPLE NUMBERS	
OX CLAIM GROUP	
E PART OF TWO PARTS	(8)

9807  
NO.

Feb 2002

1:500

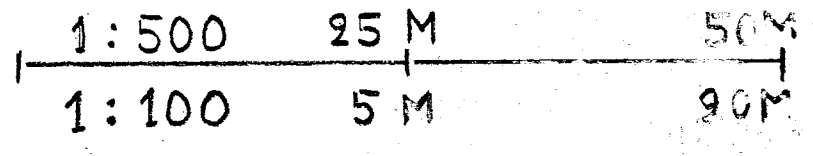


#	Au	Ag	As	#	Au	Ag	As
P-81	PPB	X	PPM	T-81	PPB	X	PPM
001	4000	✓	3	090	5	✓	1.1
002	115	✓	3	091	10	✓	.7
003	5	✓	.9	092	5	✓	1.0
004	2570	✓	.9	093	39000	✓	4.9
005	15	✓	.5	094	4000	✓	.6
006	5	✓	1.0	095	41000	✓	8.8
007	15	✓	.4	096	7600	✓	2.5
008	30	✓	.7	097	2700	✓	.7
009	20	✓	.8	098	10	✓	1.6
010	15	✓	1.0	099	10	✓	1.1
011	10	✓	.7	100	30	✓	1.3
012	5	✓	.8	001	3300	✓	.9
013	10	✓	.7	002	5	✓	.9
014	1620	✓	.5	003	5	✓	1.2
015	10	✓	.9	004	5	✓	1.0
016	10	✓	.4	005	5	✓	1.1
017	5	✓	.9	006	5	✓	.8
018	5	✓	1.4	007	5	✓	.9
019	5	✓	.8	008	190	✓	.9
020	5	✓	.5	009	10	✓	1.3

278 (1980) Au 1.46 GZ/T MASSAY  
\*1/4: AVERAGE ~0.20Z/T: 25 SQM. IN PLAN 1:100

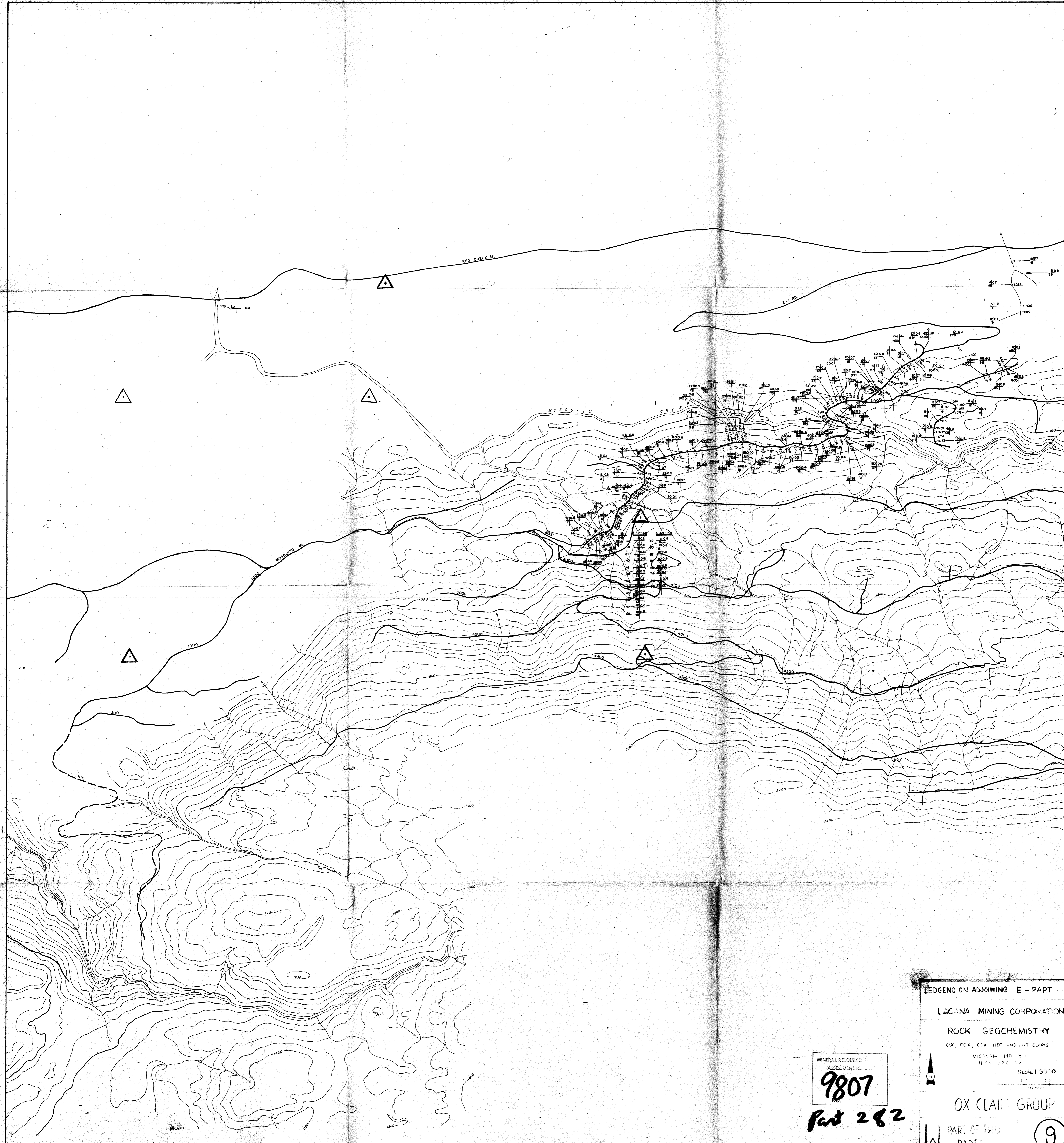
ARCHIBALD VEIN  
OX CLAIM GROUP  
PLAN, SECTION, GEOLOGY  
ANALYTICAL RESULTS

96 DRILLED AND BLASTED  
SAMPLE PIT



VICTORIA 112  
92C/9W





MINERAL RESOURCE  
ASSESSMENT REPORT  
**9807**

Part 2 of 2

LEGEND ON ADJOINING E - PART →

LACUNA MINING CORPORATION

ROCK GEOCHEMISTRY

OX, FOX, COX, HOT AND LIT CLAIMS

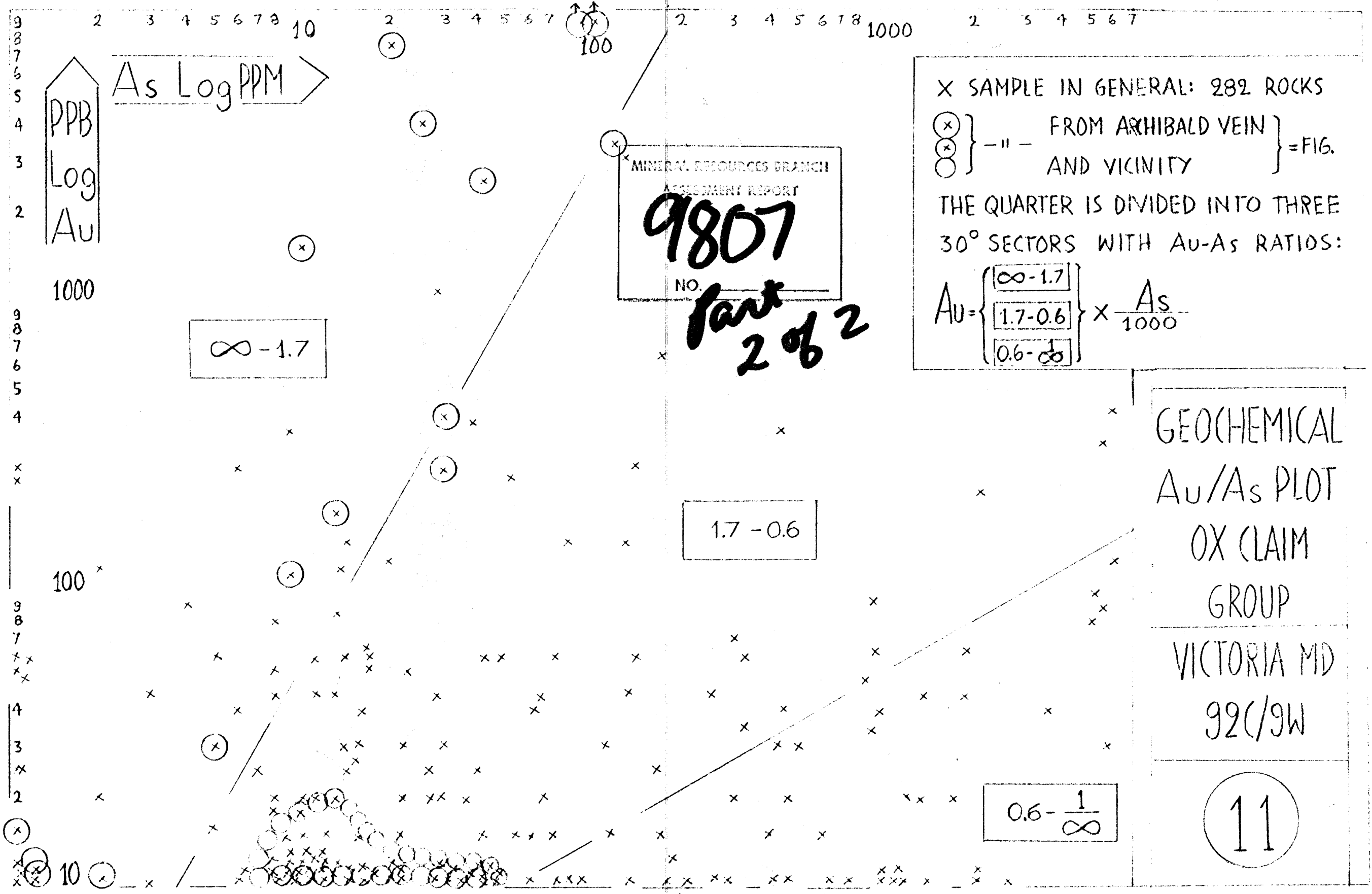
VICTORIA MC 8 C  
NTS 320 54

Scale 1:5000

OX CLAIM GROUP

W PART OF TWO PARTS

9



As Log PPM

PPB  
Log  
Au

MINERAL RESOURCES BRANCH  
ASSESSMENT REPORT  
**9807**  
NO.

*Part 2 of 2*

X SAMPLE IN GENERAL: 282 ROCKS  
 (x) } FROM ARCHIBALD VEIN } = FIG.  
 (x) } -" - AND VICINITY }  
 THE QUARTER IS DIVIDED INTO THREE  
 30° SECTORS WITH Au-As RATIOS:  

$$Au = \begin{cases} \infty - 1.7 \\ 1.7 - 0.6 \\ 0.6 - \infty \end{cases} \times \frac{As}{1000}$$

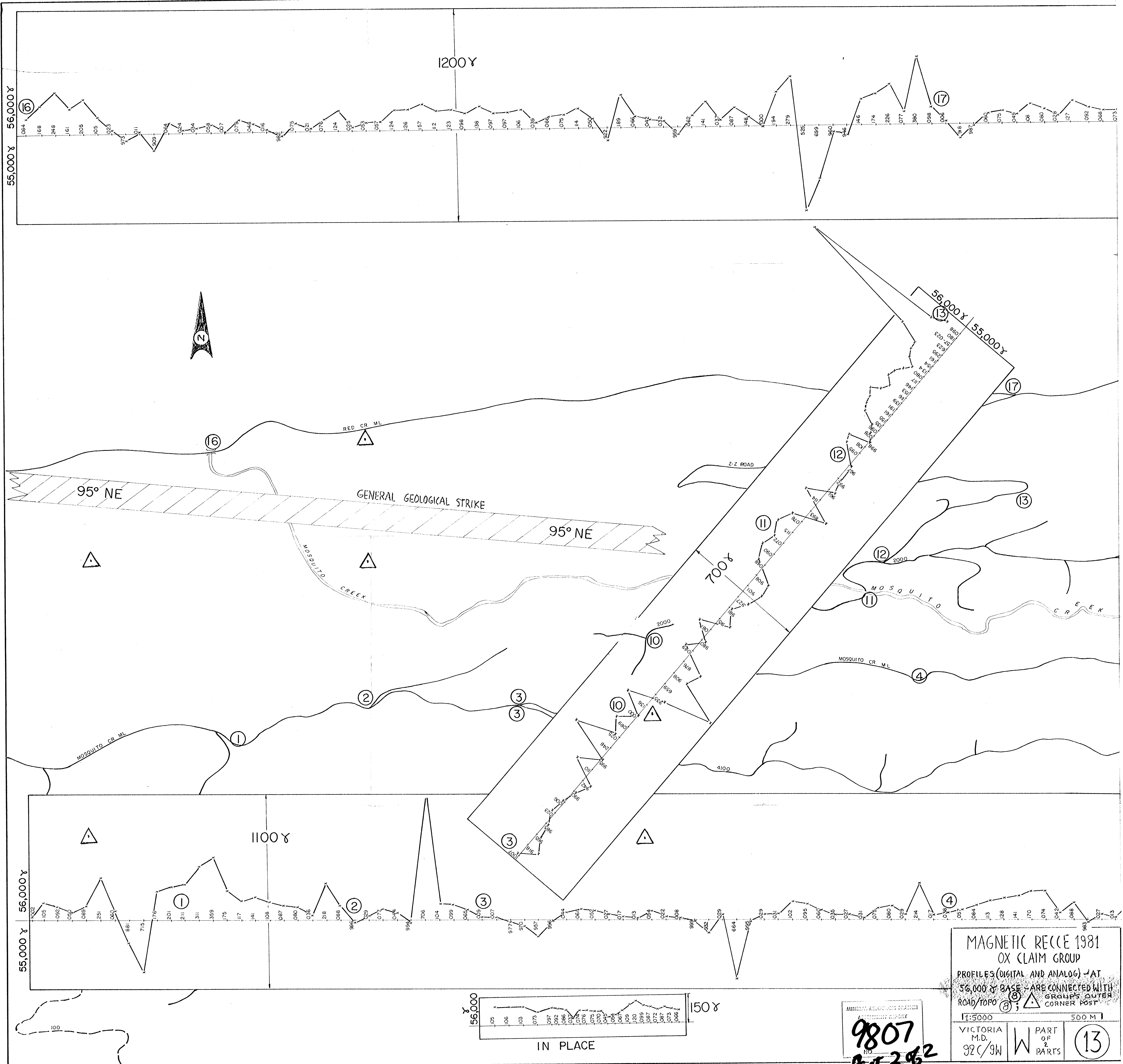
∞ - 1.7

1.7 - 0.6

0.6 - ∞

GEOCHEMICAL  
Au/As PLOT  
OX CLAIM  
GROUP  
VICTORIA MD  
92C/9W

11



MAGNETIC RECCÉ 1981  
 OX CLAIM GROUP  
 PROFILES (DIGITAL AND ANALOG) AT  
 56,000 Y BASE - ARE CONNECTED WITH  
 ROAD/TOPO GROUPS OUTER  
 CORNER POST

1:5000 500 M

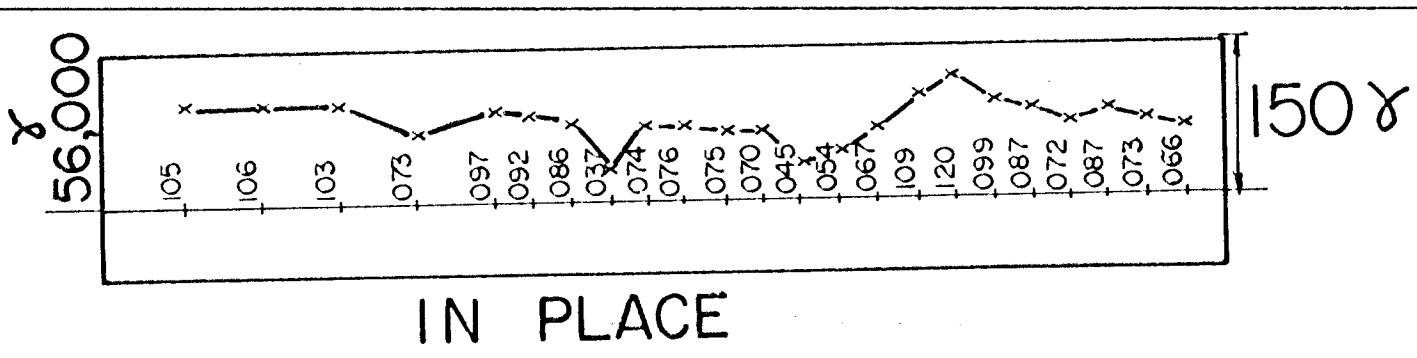
VICTORIA M.D. 92C/9W

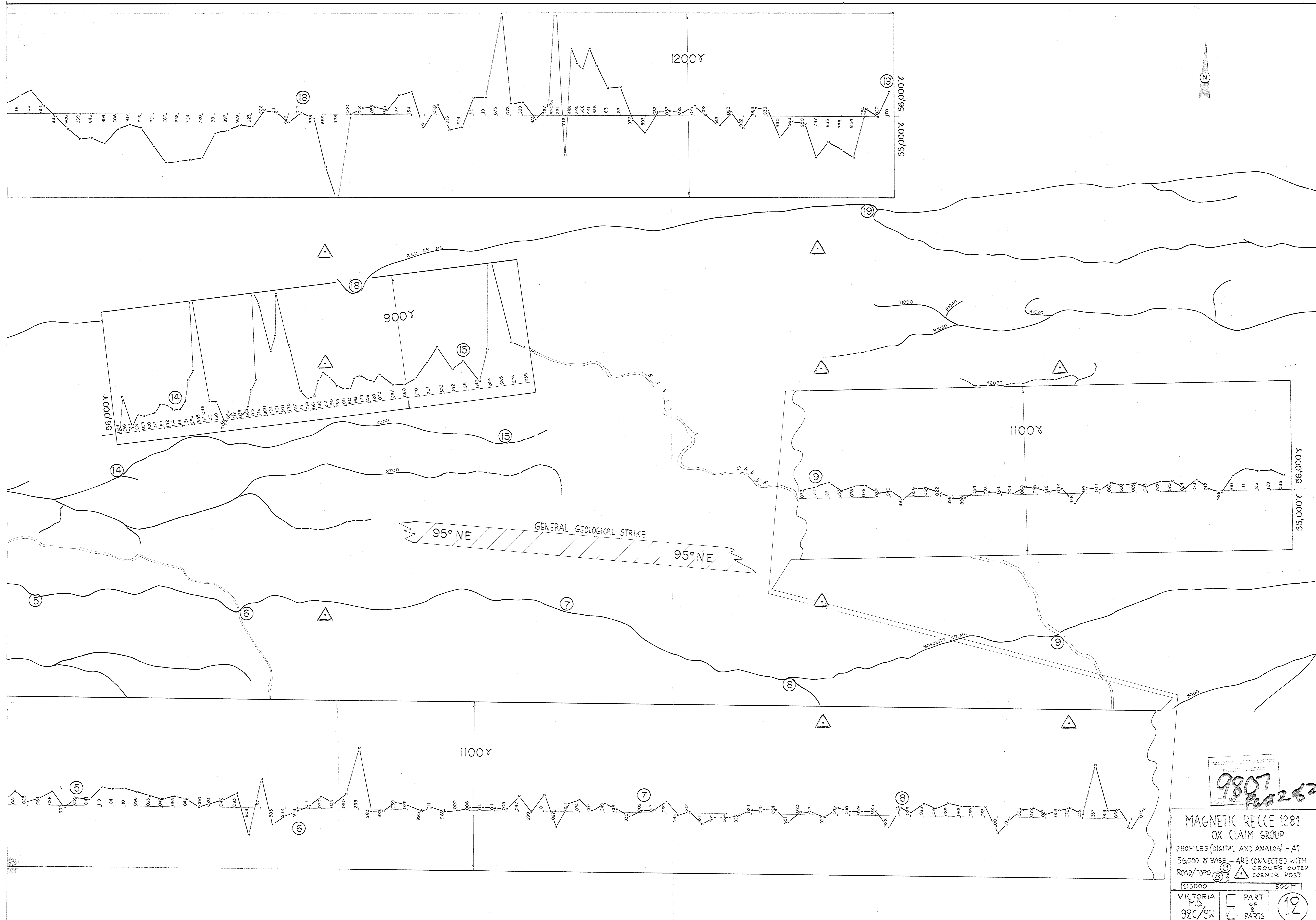
W PART OF 2 PARTS

13

MINERAL RESOURCES BRANCH  
 INVESTIGATION REPORT

9807  
 Feb 2 1982





AMERICAN ELECTRONIC SYSTEMS  
 REPORT  
**9807**  
 NO. **980262**

**MAGNETIC RECCE 1981**  
**OX CLAIM GROUP**  
 PROFILES (DIGITAL AND ANALOG) - AT  
 56,000 Y BASE - ARE CONNECTED WITH  
 ROAD/TOPO (1) (2) (3) (4) (5) (6) (7) (8) (9) (10) ARE CONNECTED WITH  
 GROUP'S OUTER CORNER POST

1:5000 500 M

VICTORIA M.D. 92C/9W PART OF PARTS (12)