

81-# 1127. -# 9894

Reconnaissance Geochemical Assessment Report

on the

WAH GROUP

(Wah #1 & Wah #2 Mineral Claims)

Situated

1 km southwest of Laidlaw, B. C.

New Westminster Mining Division

N.T.S. 92H/5E

Latitude 49°17'N Longitude 121°37'W

Field work from Sept. 27 through Sept. 30, 1981

for

AQUARIUS RESOURCES LTD

Report by

D. G. Cardinal, P. Geol.,
and
B. P. Fowler, B. Sc. (Geol.)
November, 1981,
Vancouver, B. C.

MINERAL RESOURCES BOARD
ASSESSMENT REPORT

9894
N

AQUARIUS RESOURCES LTD.



TABLE OF CONTENTS

SECTION I

A.	Introduction	1
B.	Summary & Conclusions	2
C.	Location & Access	4
D.	Property Information	5
E.	Previous Work	6
F.	General Geology	8

SECTION II

A.	Field Procedures	
	a) Geochemical Survey	9
	b) Bulk Rock Sampling	10
B.	Discussion of Results	
	a) Geochemical Survey	11
	b) Bulk Rock Sampling	12
C.	Bibliography	13

SECTION III Appendices

I	Geochemical Analysis Data Sheet
II	Certificate of Assay
III	Cost Statement
IV	Certificate

FIGURES

W1	Location Map
W2	Claim Map
W3	Geology Map
W4	Au Geochem
W5	Ag Geochem
W6	Pt Geochem
W7	Old Working Assay Comp. Map



SECTION I

A. Introduction

The Wah #1 and Wah #2 mineral claims are situated 1 km southwest of Laidlaw, B. C., approximately 16 km west of Hope, B. C. via Trans Canada Highway #1.

A reconnaissance geochemical survey was undertaken during the period of September 27-30, 1981 in order to evaluate the property for possible gold, silver, and platinum mineralization.

Bulk rock samples were taken from old workings within the property and assayed for gold and silver.

The following report, prepared for assessment work submission, provides a summary of field procedures and analysis of results.



B. Summary & Conclusions

The Wah Group consists of two-three unit mineral claims, the Wah #1 and the Wah #2. These claims are located 1 km southwest of Laidlaw, B. C., and are registered with the New Westminster Mining Division.

A reconnaissance geochemical survey and bulk rock sampling program was conducted by Aquarius Resources Ltd., during the period of September 27-30, 1981.

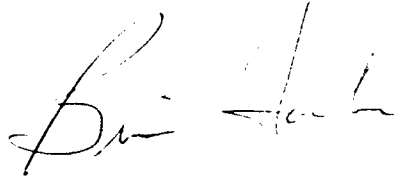
Soil samples were collected at 25 m intervals from two controlled grid lines and analyzed for gold, silver, and platinum content. Results indicate background values, with the possible exception of one platinum value (50 ppb).

Rock samples from the old workings within the property were assayed for gold and silver. The lack of economic grade and sufficient tonnage warrants no further development.

Recommendations include prospecting and geologic mapping of the area at a scale of 1:5000.



Respectfully submitted

A handwritten signature in cursive script, appearing to read "B. P. Fowler".

B. P. Fowler, B. Sc. (Geol.)

A handwritten signature in cursive script, appearing to read "Dan Cardinal".

Dan Cardinal, P. Geol
November, 1981,
Vancouver, B. C.

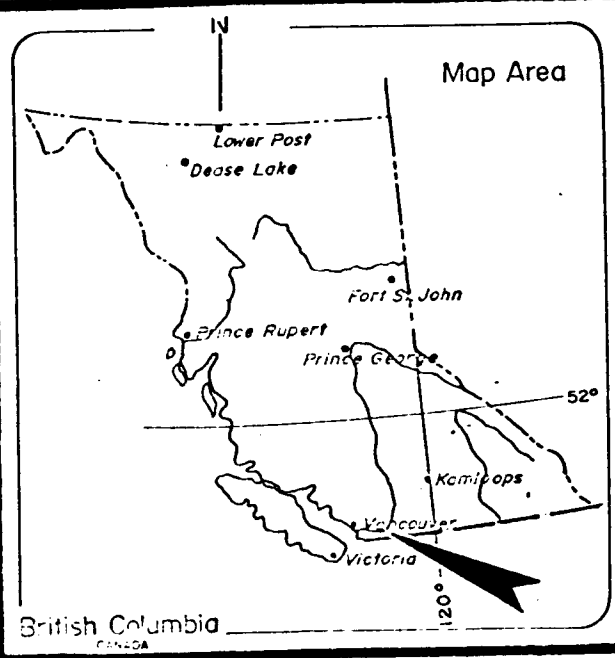
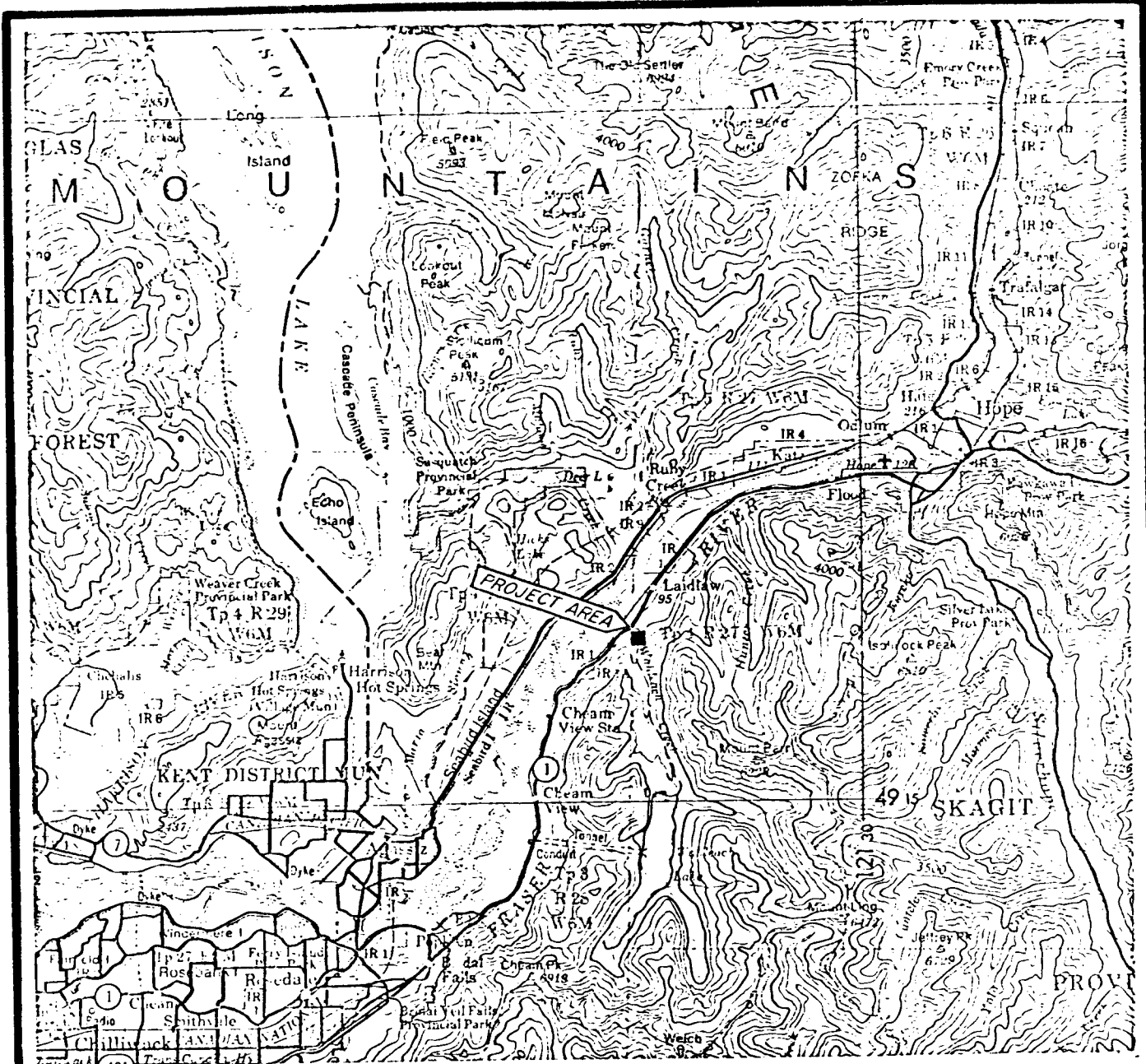


C Location and Access

The Wah Group mineral claims are located 16 km west of Hope, B. C. (Fig. W1). The Laidlaw access road traverses the property in an east-west direction while the Jones Lake road enables the area to be covered in a north-south direction. Both roads permit year round access and are in good driving condition.

Centered at latitude $49^{\circ}17'N$, longitude $121^{\circ}37'W$, the N. T. S. map reference is 92H/5E.

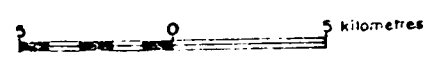
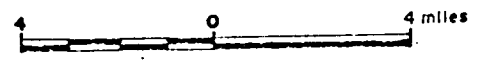




AQUARIUS RESOURCES LTD.

Wahleach Group (Wa 1 & 2 Claims) Laidlaw, B.C.
 New Westminster Mining Division 92H/5 E.

Scale: 1 to 250000 or 1 inch equals approx. 4 miles



LOCATION MAP

Figure W1

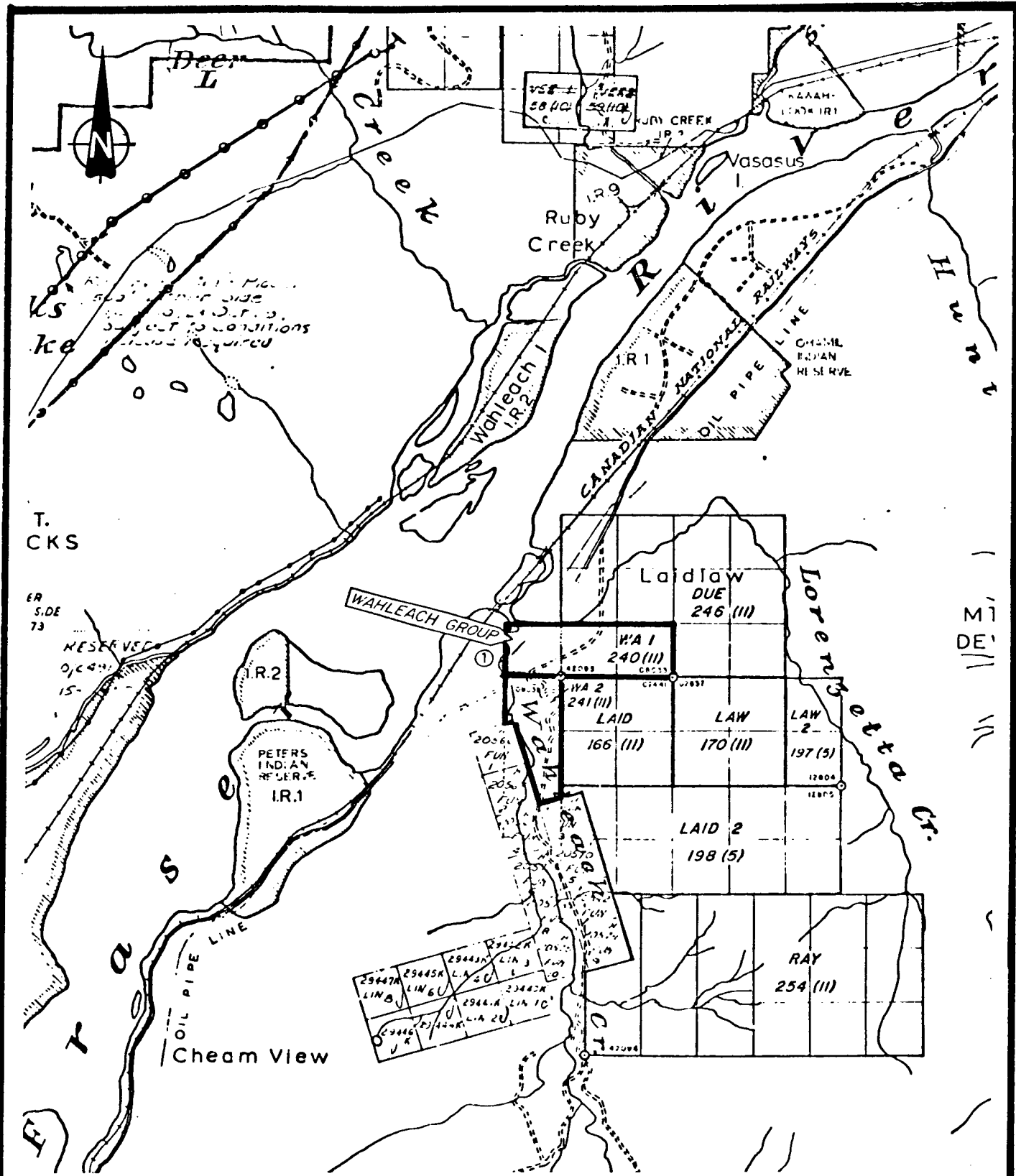
D. Property Information

Aquarius Resources Ltd. holds title to the Wah Group of mineral claims, registered with the New Westminister Mining Division. This group is comprised of two-three unit claims, the Wah #1 and the Wah #2. (Fig. W2). Details are illustrated in the following table.

Claim	# Units	Record #	Anniversary Date	Expiry Date*
Wah #1	3	240	November 9	1984
Wah #2	3	241	November 9	1984

Note: * Credits after 1981 assessment work.





AQUARIUS RESOURCES LTD.

Wahleach Group (Wa 1 & 2 Claims) Laidlaw, BC.
 New Westminster Mining Division 92H/5 E.

Scale: 1:50,000



CLAIMS MAP

Figure W2

E. Previous Work

The earliest recorded work in the area was published in the 1957 Annual Minister of Mines Report. Chalcopyrite, arsenopyrite, and pyrrhotite were noted in small quartz veins within a quartz diorite intrusive. (At this time the claims were known as the Blue Chip claims.) Short tunnels (Fig. W2) were driven in pursuit of these veins and two trial shipments of ore totalling 3,280 lbs were shipped to the Tacoma Smelter during the same year. Details of grade or extent of driftwork were not mentioned.

From 1964 to 1970, this ground was known as the Diane claims and was held by Almaza Mining Co. Ltd. Activities included 90 ft. of drift work and one diamond drill hole to a depth of 1,493 ft.

The Wah #1 and Wah #2 mineral claims now occupy portions of the above mentioned ground and were staked on November 9, 1977 by Longbar Minerals Ltd., presently known as Aquarius Resources Ltd.



G. H. Giroux, P. Eng., on behalf of Aquarius Resources Ltd., conducted a reconnaissance geochemical survey of the area in September, 1978. A total of 175 soil samples were obtained from a controlled grid and analyzed for gold. Two areas with gold values higher than background were noted; 60 ppb (parts per billion) Au at L500S 1+75W and 40 ppb Au at L1500S 0+00W (Fig. W4).

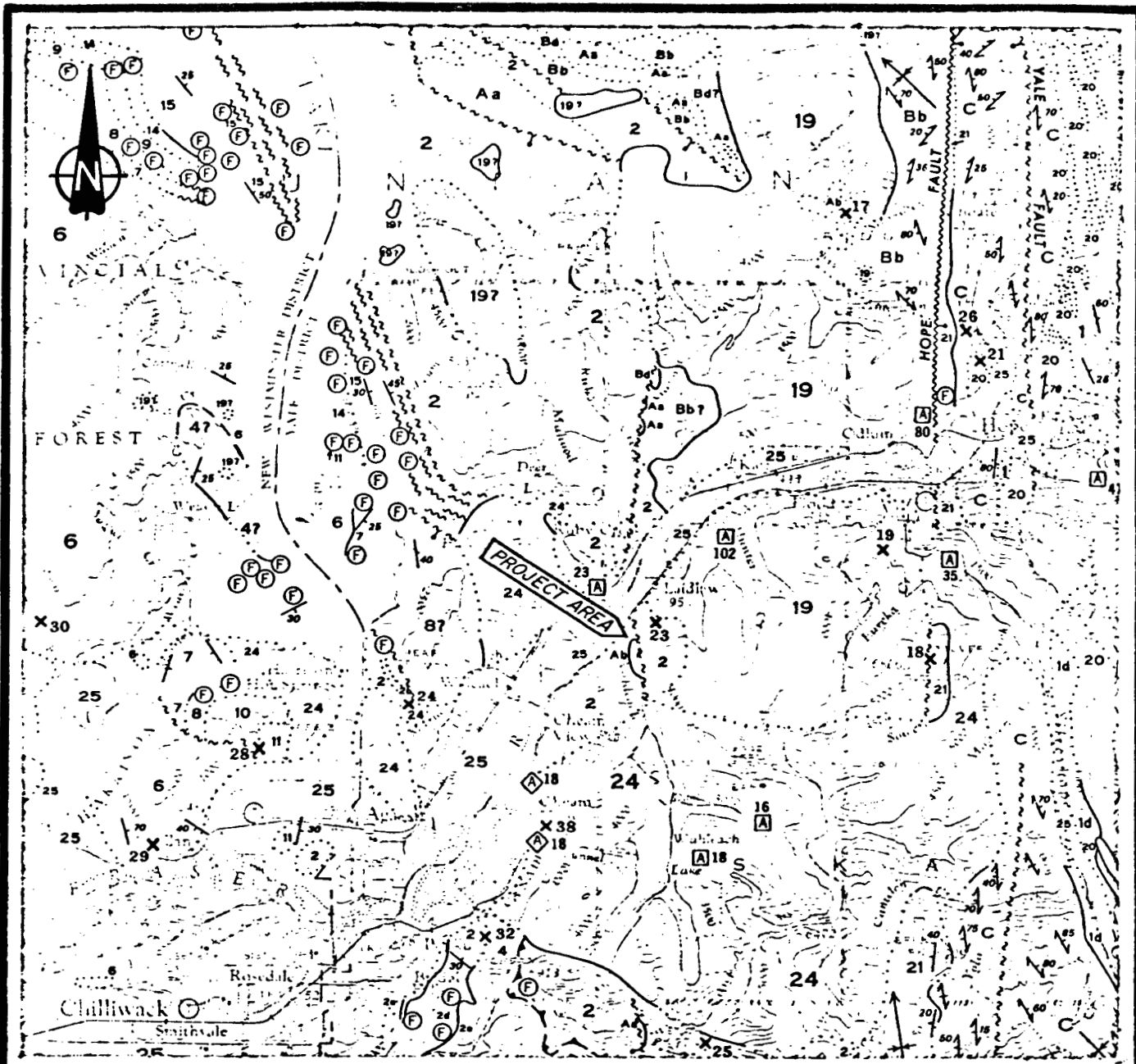


F. General Geology

The geology of the area is briefly described by J.W.H. Monger (1969). Locally, (Fig. W3) the oldest rocks are the Pennsylvanian-Permian Chilliwack Group, predominantly composed of basic volcanics and pelites. A massive Cretaceous quartz diorite intrusive marks the eastern limit of this volcanogenic group and occurs within the claims area. It is within this quartz diorite that the above mentioned tunnels (Almaza Mining Co. Ltd., 1970) followed shallow dipping sulphide rich quartz veins. Veining strikes N30°E and dips gently northwest exhibiting an average thickness of 2 cm. Abundant arsenopyrite, pyrite, sericite, and minor pyrrhotite were noted within this vein material.

An ultramafic serpentine lens along the west bank of Wahleach Creek lies along a north-south trending fault. This unit is of undetermined age and is most likely the source of the platinum "sniffs" which occur in the area.





LEGEND

CENOZOIC Tertiary Miocene & Earlier

24 Granodiorite, quartz diorite.

PALEOZOIC Pennsylvanian & Permian Chilliwack Group

2 Basic volcanic rocks & pelites.

Ultramafic Rock

Ab pyroxenite.

23 x Blue Chip



AQUARIUS RESOURCES LTD.

Wahleach Group (Wa 1 & 2 Claims) Laidlaw, B.C.
New Westminster Mining Division 92H/5 E.

Scale: 1 to 250000 or 1 inch equals approx. 4 miles



From G.S.C. Map 12-1969, Paper 69-47.

REGIONAL GEOLOGY Figure W3

SECTION II

A. Field Procedures

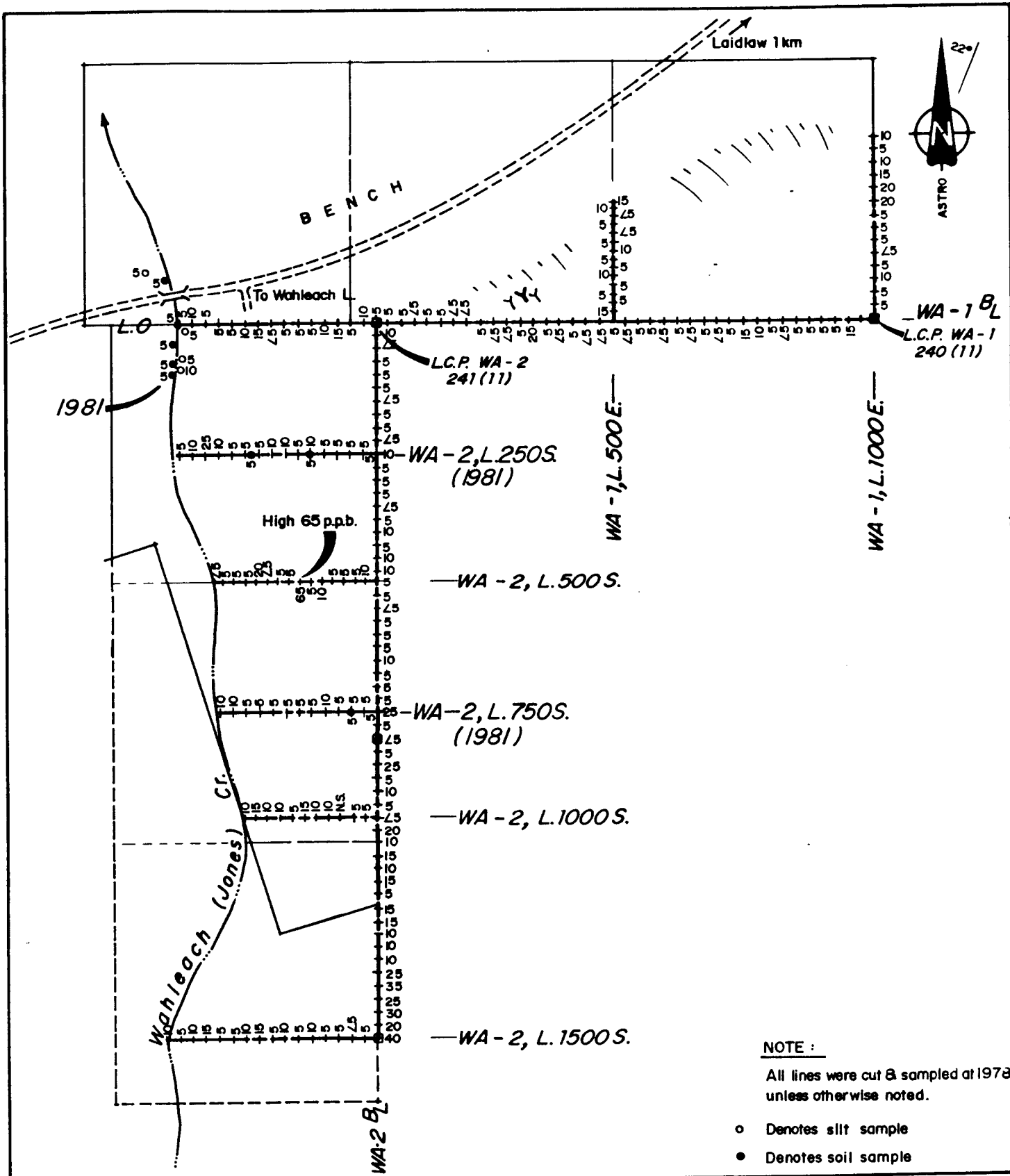
a) Geochemical Survey

Two grid lines (L250S and L750S) were blazed and flagged due west for an average distance of 340 m. Lines were surveyed by compass and chain and flagged every slope corrected 25 m.

Soil samples (upper B soil horizon) were taken at 25 m intervals and placed in standard kraft paper bags marked with grid coordinates. Silt samples were obtained from all creeks encountered and sample locations were tied into either the grid or prominent landmarks. A total of 33 soil samples and 8 silt samples were boxed and shipped to Min-En Labs. Ltd., of North Vancouver, B. C. , to be analyzed for gold, silver and platinum.

Results and field data were plotted on claims area base map at a scale of 1:10,000 (Figs. W4,5,6)





1:10,000

0 50 100 200 300 400 500m

BASE MAP FROM FIELD SKETCH BY A.B., SEPT. '78

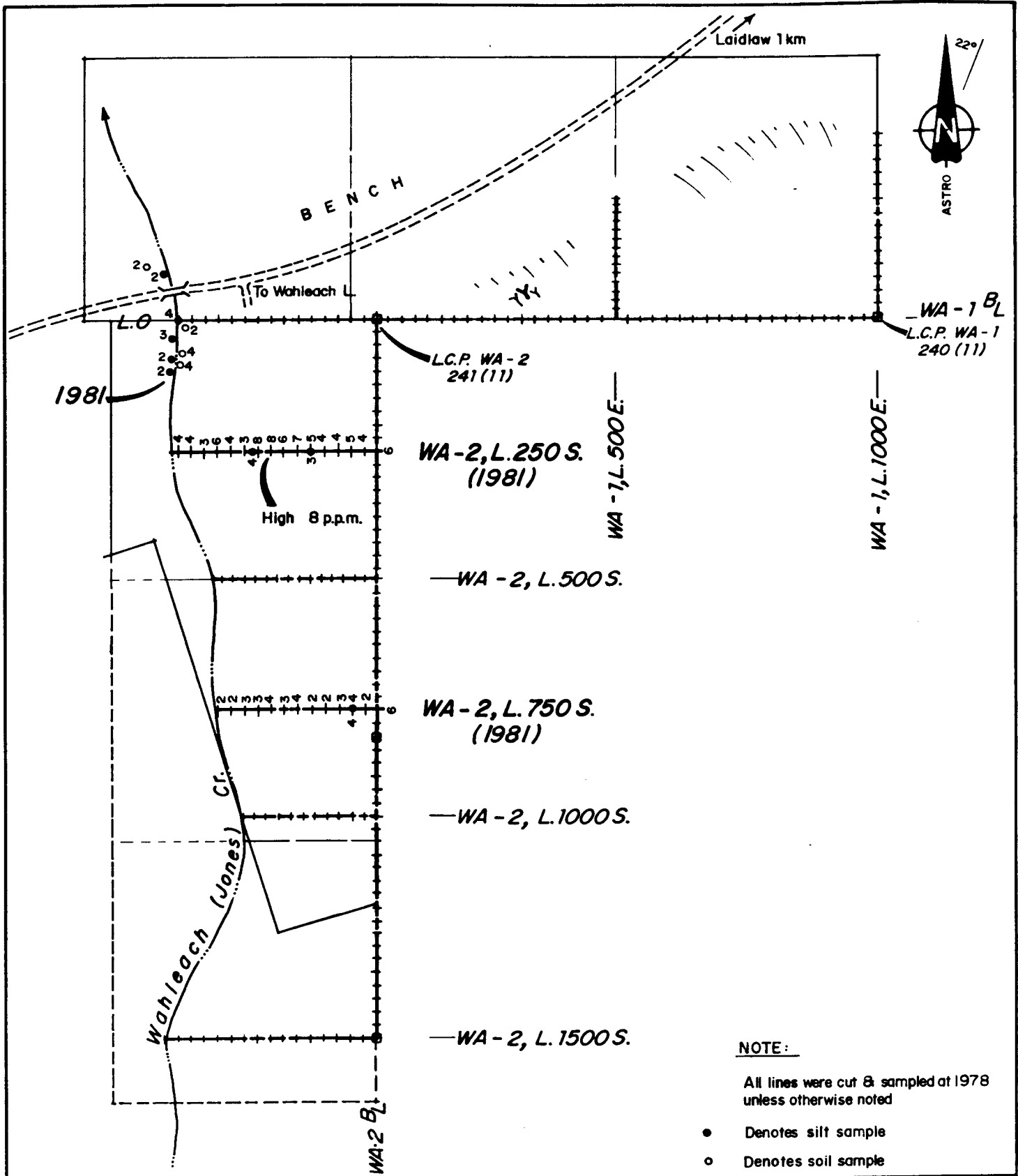
P.K.C.'81

GOLD GEOCHEMISTRY (ppb)
Figure W4



AQUARIUS RESOURCES LTD.

Wahleach Group (Wa 1 & 2 Claims) Laidlaw, B.C.
 New Westminster Mining Division 92H/5 E.



1:10,000

0 50 100 200 300 400 500m

BASE MAP FROM FIELD SKETCH BY A.B., SEPT. '78

P.K.C. '81

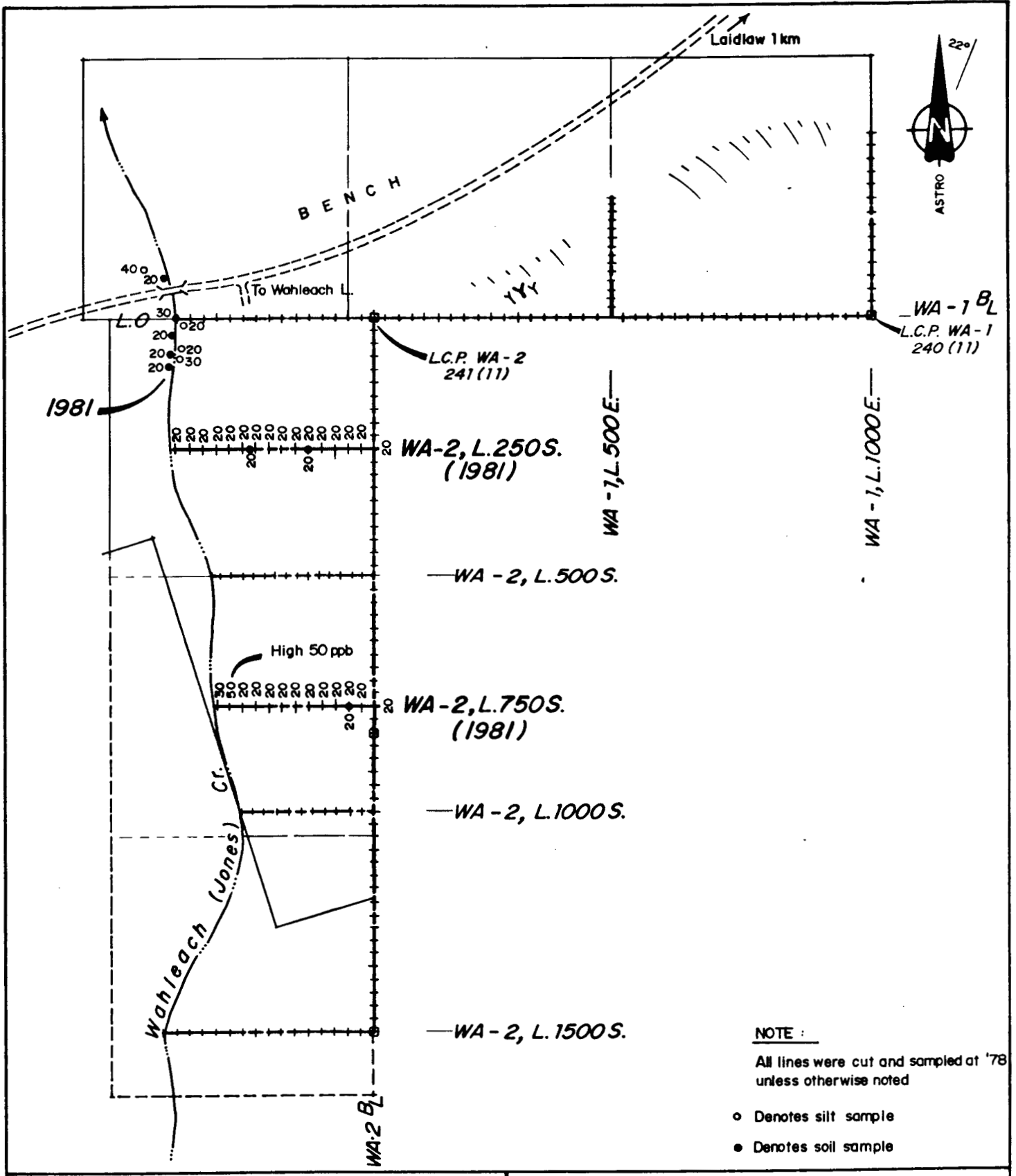
SILVER GEOCHEMISTRY (ppm)

Figure W5



AQUARIUS RESOURCES LTD.

Wahleach Group (Wa 1 & 2 Claims) Laidlaw, B.C.
New Westminster Mining Division 92H/5 E.



NOTE :
 All lines were cut and sampled at '78 unless otherwise noted

- Denotes silt sample
- Denotes soil sample

1:10,000 0 50 100 200 300 400 500 m
 BASE MAP FROM FIELD SKETCH BY A.B., SEPT. '78 P. K.C. '81

PLATINIUM GEOCHEMISTRY (ppb)
Figure W6



AQUARIUS RESOURCES LTD.

Wahleach Group (Wa 1 & 2 Claims) Laidlaw, B.C.
 New Westminster Mining Division 92H/5 E.

b) Bulk Rock Sampling

Old workings on the property consist of 3 tunnels which follow a series of quartz veins within a diorite intrusive. The majority of this underground work was performed by Almaza Mining Co. Ltd., in 1970. Though the portals are within the Wah Group claims area, the tunnels trend 135° Azimuth into the adjoining Laid claims, presently held by Arch Mining and Milling Ltd., of Calgary, Alberta.

The westernmost tunnel is the lowest in elevation and deep water made it impossible to determine its extent. The eastern tunnel is approximately 35 m in length, displaying crosscuts of 3 m east and west 2 m from the portal. The central tunnel is 60 m in length and segments of the wall rock was bulk sampled and assayed for gold and silver. The old workings plan, sample locations, and assay results are illustrated in Fig. W7.

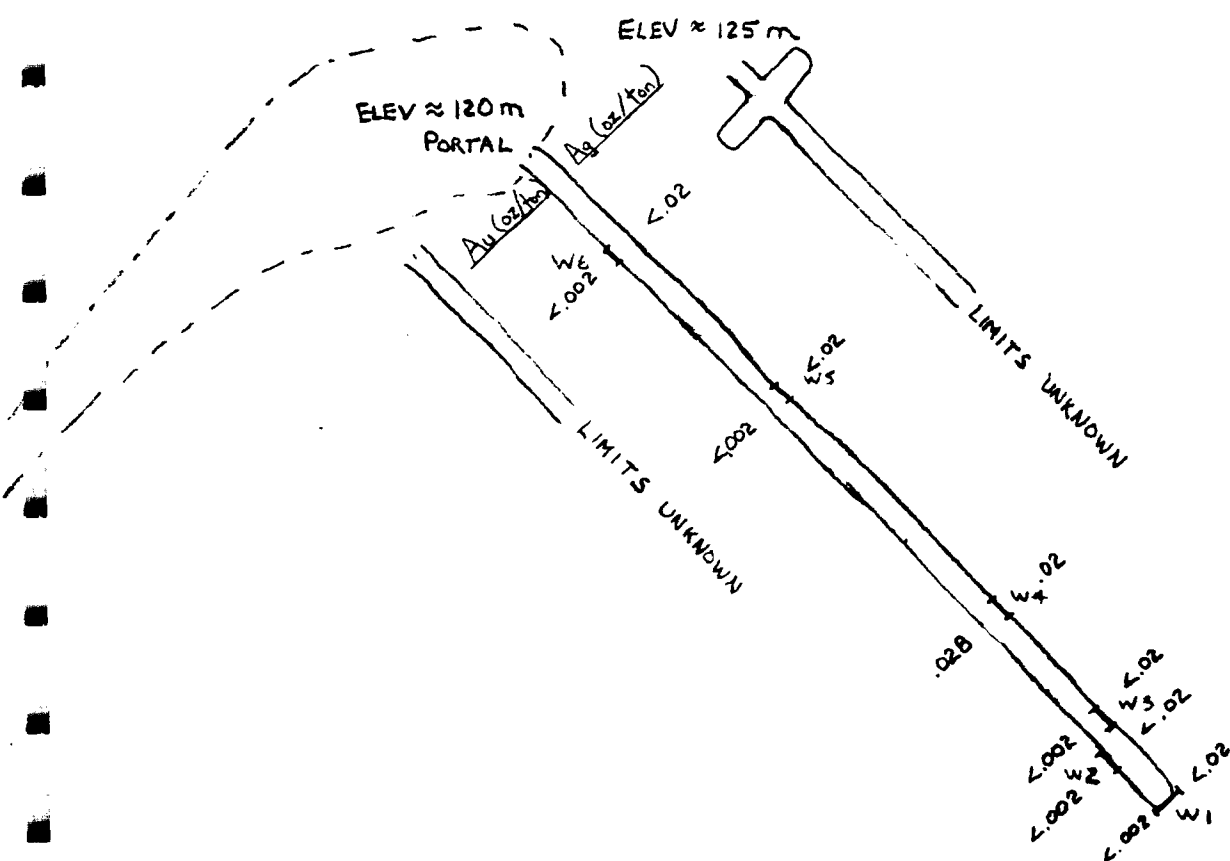


WAHLEACH CREEK
OLD WORKINGS ASSAY COMPILATION MAP



1:500 (metric)

Fig N7



B. Discussion of Results

a) Geochemical Survey

A total of 33 soil (upper B horizon) and 8 silt samples were analyzed for gold, silver and platinum content. Analytical methods included Ag nitric, perchloric digestion A.A., Au - Aqua regia, A.A., and Pt fire assay. Results were plotted on 1:10,000 scale gold, silver and platinum geochemical basemaps. (Figs. W4, 5, & 6)

Gold values ranged from 5 ppb (detection limit) to a high of 25 ppb Au at L250S 3+25W. Silver ranged from 2 ppm (parts per million) to a high of 8 ppm and platinum was found to occur from 20 ppb (detection limit) to a high of 50 ppb. The geochemical analysis data sheet is presented in Appendix I.

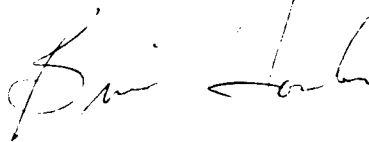
b) Bulk Rock Sampling

Six bulk rock samples (W-1-W-6) of predominantly quartz vein material were taken along the central tunnel of the old workings (Fig. W7) and assayed for gold and silver. Assay results are presented in the following table.



Sample #	Au oz/ton	Ag oz/ton
W1	<u>/0.002</u>	<u>/0.02</u>
W2	<u>/0.002</u>	<u>/0.02</u>
W3	<u>/0.002</u>	<u>/0.02</u>
W4	0.028	0.02
W5	<u>/0.002</u>	<u>/0.02</u>
W6	<u>/0.002</u>	<u>/0.02</u>

Respectfully submitted



Brian Fowler, B.Sc. (Geol.)



Dan Cardinal, P. Geol.,
November, 1981,
Vancouver, B. C.



C. Bibliography

B. C. Department of Mines: - 1957, pg 66;, 1968, pg 82;
1969, pg. 198; 1970, pg. 249

Giroux, G. H. : Assessment Report on the Wah #1
1978 and Wah #2 claims

Monger, J.W.H. Hope Map Area, West Half
1969 British Columbia; G.S.C. paper
69-47



SECTION III

APPENDICES



APPENDIX I

GEOCHEMICAL ANALYSIS DATA SHEET



MIN-EN Laboratories Ltd.

705 WEST 15th STREET,
NORTH VANCOUVER, B.C., CANADA V7M 1T2
TELEPHONE (604) 980-5814

ANALYTICAL REPORT

Project Wah Date of report Nov. 6/81.

File No. 1-1067 Date samples received Oct. 30/81.

Samples submitted by:

Company: Aquarius Resources

Report on: 41 soil Geochem samples

..... Assay samples

Copies sent to:

1. Aquarius Resources, Vancouver, B.C.

2. Aquarius Resources, Hpe, B.C.

3.

Samples: Sieved to mesh -80 Ground to mesh

Prepared samples stored discarded

rejects stored discarded

Methods of analysis: Ag-nitric, perchloric digestion. A.A., Au-Aqua
regia., A.A., Pt-Fire assay.

Remarks:

SPECIALISTS IN MINERAL ENVIRONMENTS

PROJECT No.: Wah

MIN - EN Laboratories Ltd.

DATE: **Nov. 6, 1981.**

705 WEST 15th ST., NORTH VANCOUVER, B.C. V7M 1T2
PHONE (604) 980-5814

ATTENTION:

Sample. Number	Mo ppm	Cu ppm	Pb ppm	Zn ppm	Ni ppm	Co ppm	Ag ppm	Fe ppm	Hg ppb	As ppm	Mn ppm	Au ppb	Pt ppb		
6	10	15	20	25	30	35	40	45	50	55	60	65	70	75	80
81	86	90	95	100	105	110	115	120	125	130	135	140	145	150	160
L250S000W							06					5	20		
25							04					5	20		
50							05					5	20		
75							04					5	20		
100							04					5	20		
125							05					10	20		
150							07					5	20		
175							06					10	20		
200							08					10	20		
225							08					5	20		
250							03					5	20		
275							04					5	20		
300							06					10	20		
325							03					25	20		
350							04					10	20		
L250S375W							04					5	20		
L750S000W							06					5	20		
25							02					5	20		
50							04					5	20		
75							03					5	20	(40 mesh)	
100							02					10	20		
125							02					5	20		
150							04					5	20		
175							03					5	20		
200							04					5	20		
225							03					5	20		
250							03					5	20		
275							02					10	50		
L750S300W							02					10	30		
Creek 1							02					5	40		

PROJECT No.: Wah

MIN - EN Laboratories Ltd.

DATE: **Nov. 6,**

705 WEST 15th ST., NORTH VANCOUVER, B.C. V7M 1T2
PHONE (604) 980-5814

1981.

ATTENTION:

Sample. Number	Mo ppm	Cu ppm	Pb ppm	Zn ppm	Ni ppm	Co ppm	Ag ppm	Fe ppm	Hg ppb	As ppm	Mn ppm	Au ppb	Pt ppb	75	80	
81	86	90	95	100	105	110	115	120	125	130	135	140	145	150	155	160
Creek	2						0.2					5	20			
	3						0.4					5	20			
Creek	4						0.4					10	20			
Silt	1						0.3					5	20			
	2						0.4					5	20			
	3						0.4					5	30			
	4						0.2					5	20			
	5						0.4					5	30			
	6						0.3					5	20			
	7						0.2					5	30			
Silt	8						0.2					5	20			
							.									
							.									
							.									
							.									
							.									
							.									
							.									
							.									
							.									
							.									
							.									
							.									
							.									
							.									
							.									
							.									
							.									
							.									
							.									
							.									
							.									
							.									
							.									
							.									
							.									
							.									
							.									

CERTIFIED BY: *[Signature]*

APPENDIX II

CERTIFICATE OF ASSAY



Certificate of Assay

TO Aquarius Resources Ltd.
920 - 475 Howe Street
VANCOUVER, B.C. V6C 2R3

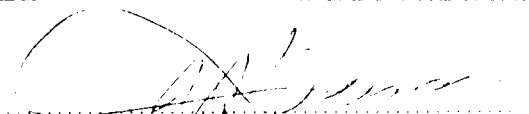
A21 - 1829
 November 30, 1981
 PROJECT: WAM

I hereby certify that the following are the results of assays made by us upon the herein described rock samples.

MARKED	PERCENT PERCENT		MARKED	PERCENT	PERCENT	MARKED	PERCENT	PERCENT
	Au	Ag						
	oz/ton	oz/ton						
W - 1	<0.002	<0.02						
2	<0.002	<0.02						
3	<0.002	<0.02						
4	0.028	0.02						
5	<0.002	<0.02						
6	<0.002	<0.02						
cc Aquarius - Hope								

NOTE:

Rejects retained two weeks
 Pulps retained three months
 unless otherwise arranged.


 Registered Assayer, Province of British Columbia

APPENDIX III

Assessment Work Details

Personnel

Field man, Sept. 27-30, 1981		
3 days @ \$120/day		360.00
Field man, Sept. 27-30, 1981		
3 days @ \$120/day		360.00
Field supervisor,		
1 day, @ \$150/day		150.00

Expenses (field)

Assays, (41 soils, 6 bulk)		715.85
Room & Board, 2 men,		
3 days @ \$50/day		350.00
Room & Board, 1 man		
1 day @ \$50/day		50.00
Vehicle expense,		
3 days @ \$30/day		90.00
mileage		63.65

Report

2 days writing @ \$150/day		300.00
Drafting, 24 hrs @ \$18.50/hr		444.00
Typing, and office, 10 hrs @ \$14/hr		140.00
Reproduction, binding, collating, etc		100.00
		<u>3,123.50</u>
PAC withdrawal		<u>476.50</u>
Total Assessment		\$3,600.00

Respectfully submitted

D. Cardinal

D. Cardinal, P. Geol.



APPENDIX IV

Certificate

I, Daniel G. Cardinal of the Municipality of Hope, British Columbia, do hereby certify that:

1. I am a professional geologist residing in Hope, B. C., mailing address, P. O. Box 594, Hope, British Columbia, V0X 1L0
2. I am a graduate of the University of Alberta (1975) with a B.Sc. degree in Economic Geology and a graduate of the Northern Alberta Institute of Technology with a Geological Technologist diploma (1970)
3. I am a member in good standing with the Association of Professional Engineers, Geologists and Geophysicists of Alberta; and a member of the Canadian Institute of Mining and Metallurgy.
4. Since 1968, I have been actively involved in the Canadian mining industry both as a prospector and a professional geologist, and have assisted and instructed prospector's courses through the Department of Extension, University of Alberta.
5. I am presently employed by Aquarius Resources Ltd., as a permanent staff geologist to systematically carry out geological mapping, prospecting, geochemical, geophysical and diamond drilling programs.



Daniel G. Cardinal, P. Geol.

November, 1981,

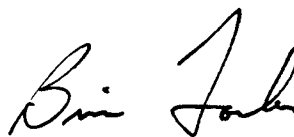


APPENDIX IV

Certificate:

I, Brian P. Fowler of the Municipality of Hope, British Columbia, do hereby certify that:

1. I am a Junior Geologist residing in Hope, British Columbia, mailing address, P. O. Box 1465, Hope, British Columbia, V0X 1L0.
2. I am a graduate of the University of Alberta (1981) with a B.Sc degree in Geology, specializing in Petroleum
3. Upon graduation, I have been employed in the capacity of Junior Geologist by Aquarius Resources Ltd., to aid in geologic mapping and geochemical surveys within the Coquihalla Gold Belt.



Brian P. Fowler, B.Sc. (Geol)
November, 1981,
Vancouver, B. C.

