

1981 EXPLORATION PROGRAM  
GOLD 1 GROUP  
(MT. ROACH PROPERTY)  
KAMLOOPS MINING DIVISION  
N.T.S. MAP-AREA 921/4  
Lat.  $50^{\circ}13'N$ ; Long.  $121^{\circ}42'W$

81-1163

#9919

FIGURES 3-11

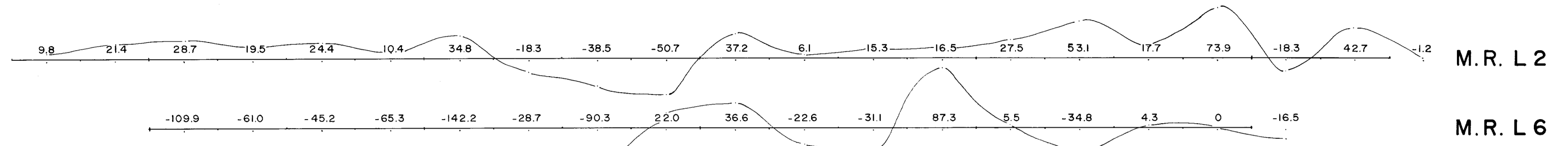
To accompany report by

W.G. SMITHERINGALE, P.Eng.

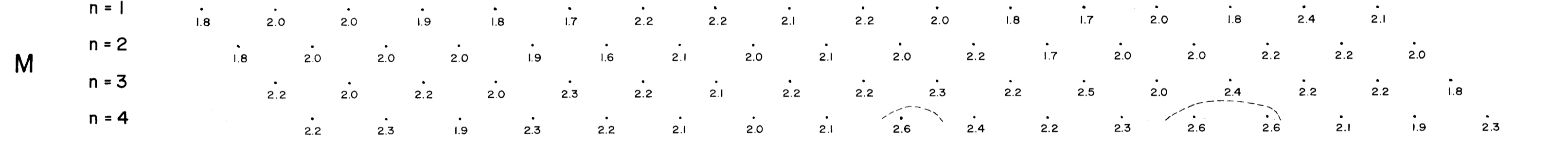
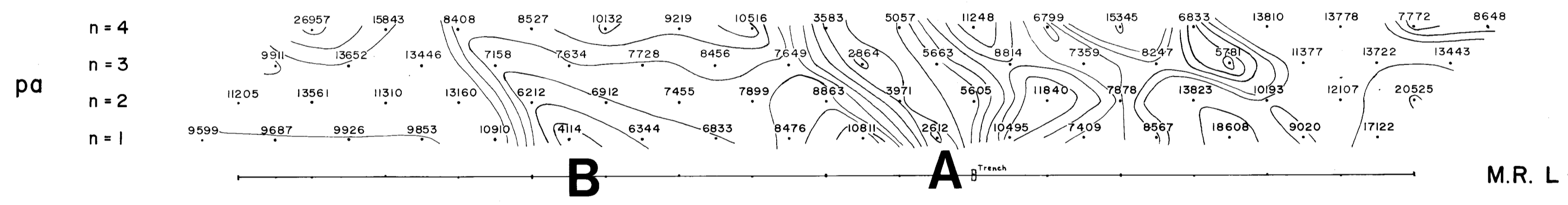
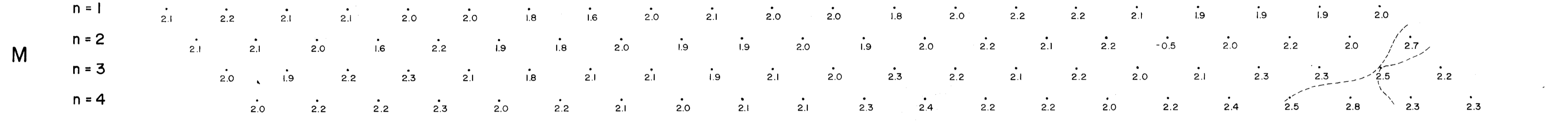
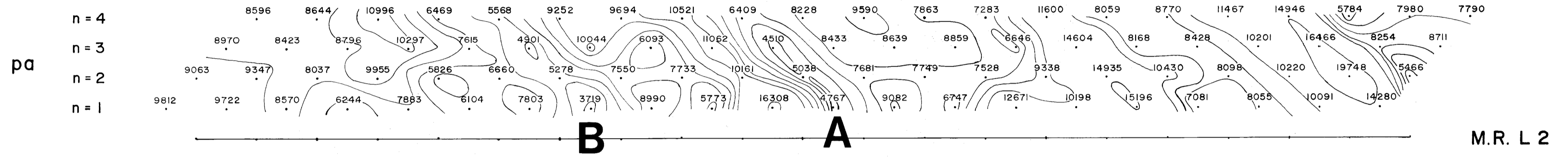
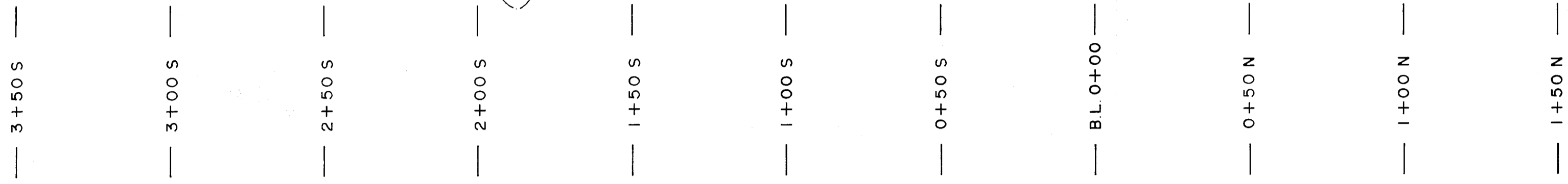
December 14, 1981

9919

212



SELF POTENTIAL GRADIENT  
n = 1, 1 cm = 50 mv



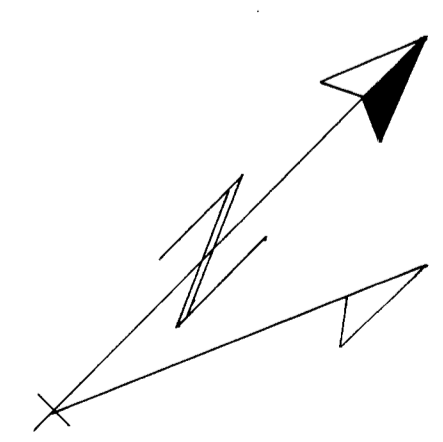
MINERAL RESOURCES BRANCH  
ASSESSMENT REPORT  
**9919**  
NO.

**Part 2 of 2**

FIGURE 11



To Accompany Geophysical Report By David G. Mark, Geophysicist.



INSTRUMENTATION:  
Huntec time domain M4 Receiver  
Phoenix IPT 1 Transmitter

Pole - Dipole Array  
Delay time: 300 ms  
Integration time: 30 ms  
Dipole length: 25 m

NOTES:  
Lines M.R.L2 (I.P.L1) and M.R.L6 (I.P.L2) follow the mountain contours and are approximately 350 metres apart on slope.

CONTOUR INTERVALS:  
Apparent Resistivity (pa):  
3,000 to 10,000 ohm-meters: 1,000  
10,000 to 25,000 ohm-meters: 5,000  
Chargeability (M):  
Background: 2.5 mV/V

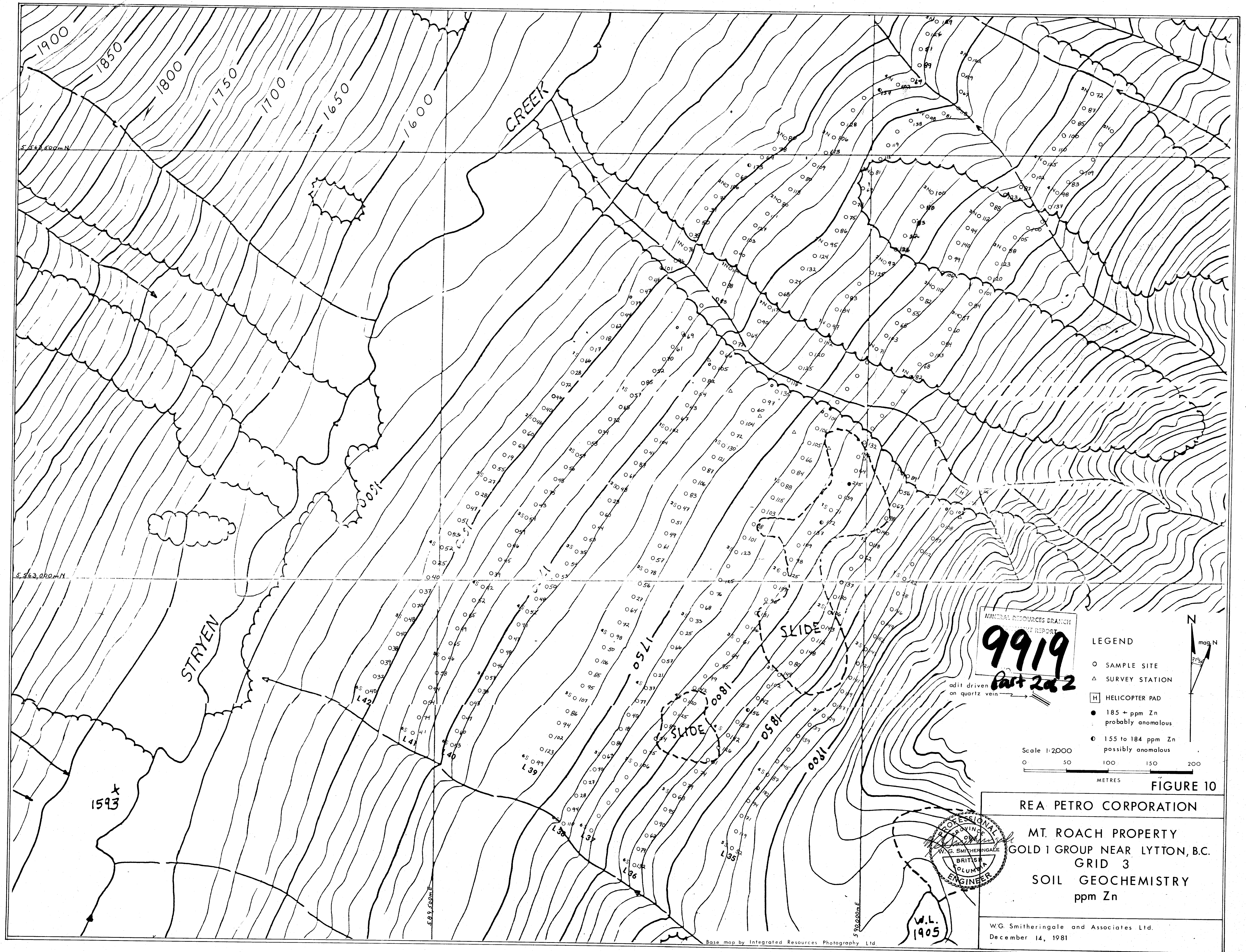
GEOTRONICS SURVEYS LTD.

**REA PETRO CORPORATION**

ROACH MOUNTAIN PROPERTY, KAMLOOPS M.D., B.C.

**INDUCED POLARIZATION SURVEY  
RESISTIVITY & I.P. PSEUDOSECTIONS  
S.P. PROFILES**

SURVEYED / DRAWN BY: J.R.A.	N.T.S.: 92 1 / 4 E	DATE: AUGUST, 1981	JOB No: 81 - 43	SCALE: 1:1250	SHEET No: 1
--------------------------------	-----------------------	-----------------------	--------------------	------------------	----------------



1900  
 1850  
 1800  
 1750  
 1700  
 1650  
 1600

CREEK

STRYEN

SLIDE

SLIDE

1593

L42

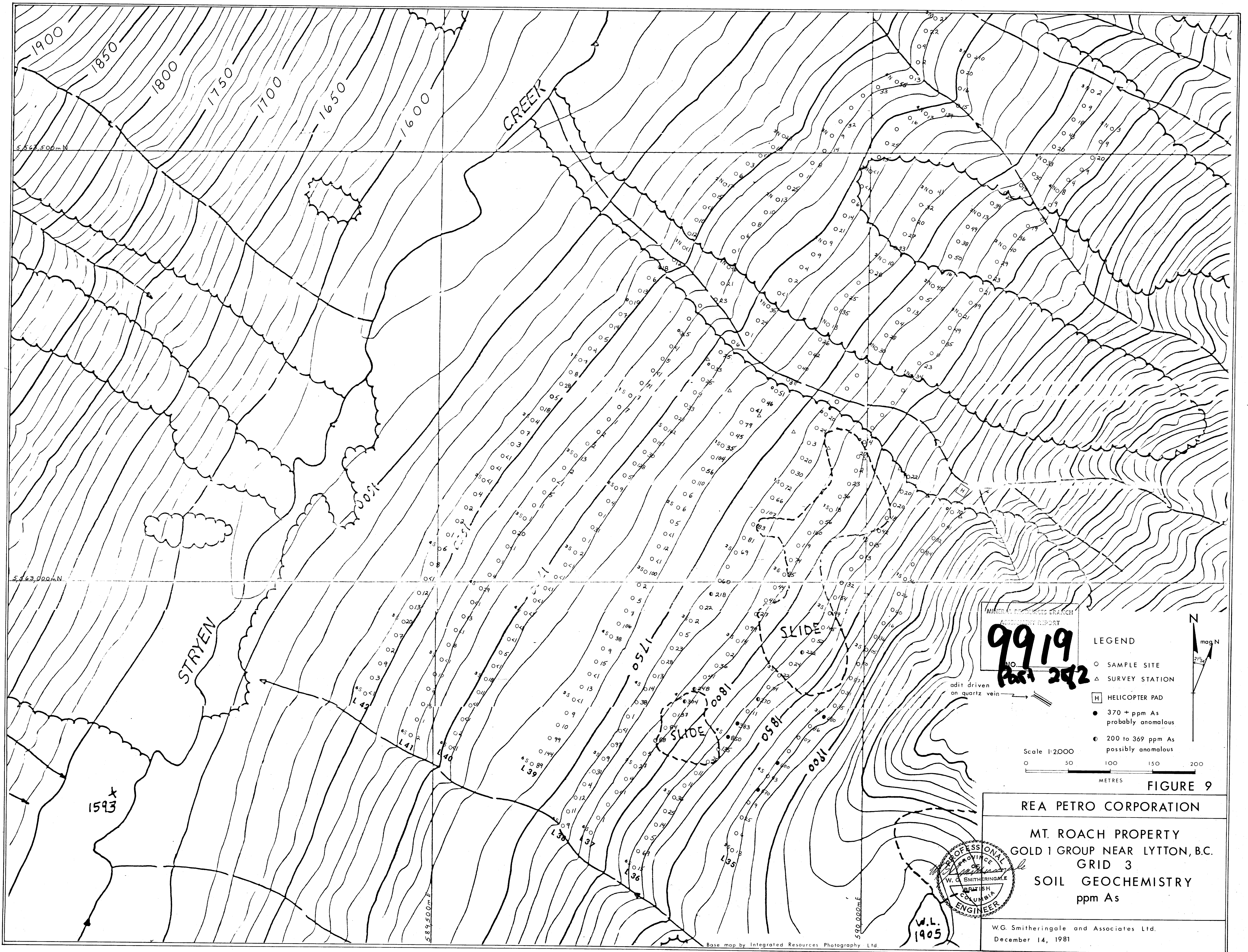
L41

L39

L38

L35

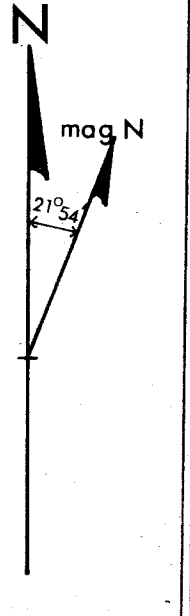
W.L. 1405



MINERAL RESOURCES BRANCH  
ASSESSMENT REPORT  
**9919**  
NO. **1593**  
**1593**

- LEGEND
- SAMPLE SITE
  - △ SURVEY STATION
  - HELICOPTER PAD
  - 370 + ppm As probably anomalous
  - ◉ 200 to 369 ppm As possibly anomalous

Scale 1:2000  
0 50 100 150 200  
METRES



adit driven on quartz vein

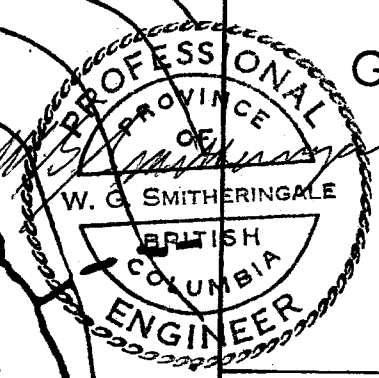


FIGURE 9  
REA PETRO CORPORATION  
MT. ROACH PROPERTY  
GOLD 1 GROUP NEAR LYTON, B.C.  
GRID 3  
SOIL GEOCHEMISTRY  
ppm As  
W.G. Smitheringale and Associates Ltd.  
December 14, 1981

Base map by Integrated Resources Photography Ltd



MINERAL RESOURCES BRANCH  
 REPORT NO. **9919**  
 Part 2 of 2

- LEGEND
- SAMPLE SITE
  - △ SURVEY STATION
  - [H] HELICOPTER PAD
  - 200 + ppb Au probably anomalous
  - 100 to 199 ppb Au possibly anomalous

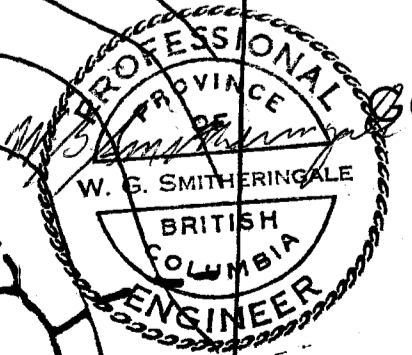
Scale: 1:2000  
 0 50 100 150 200  
 METRES

FIGURE 8

REA PETRO CORPORATION

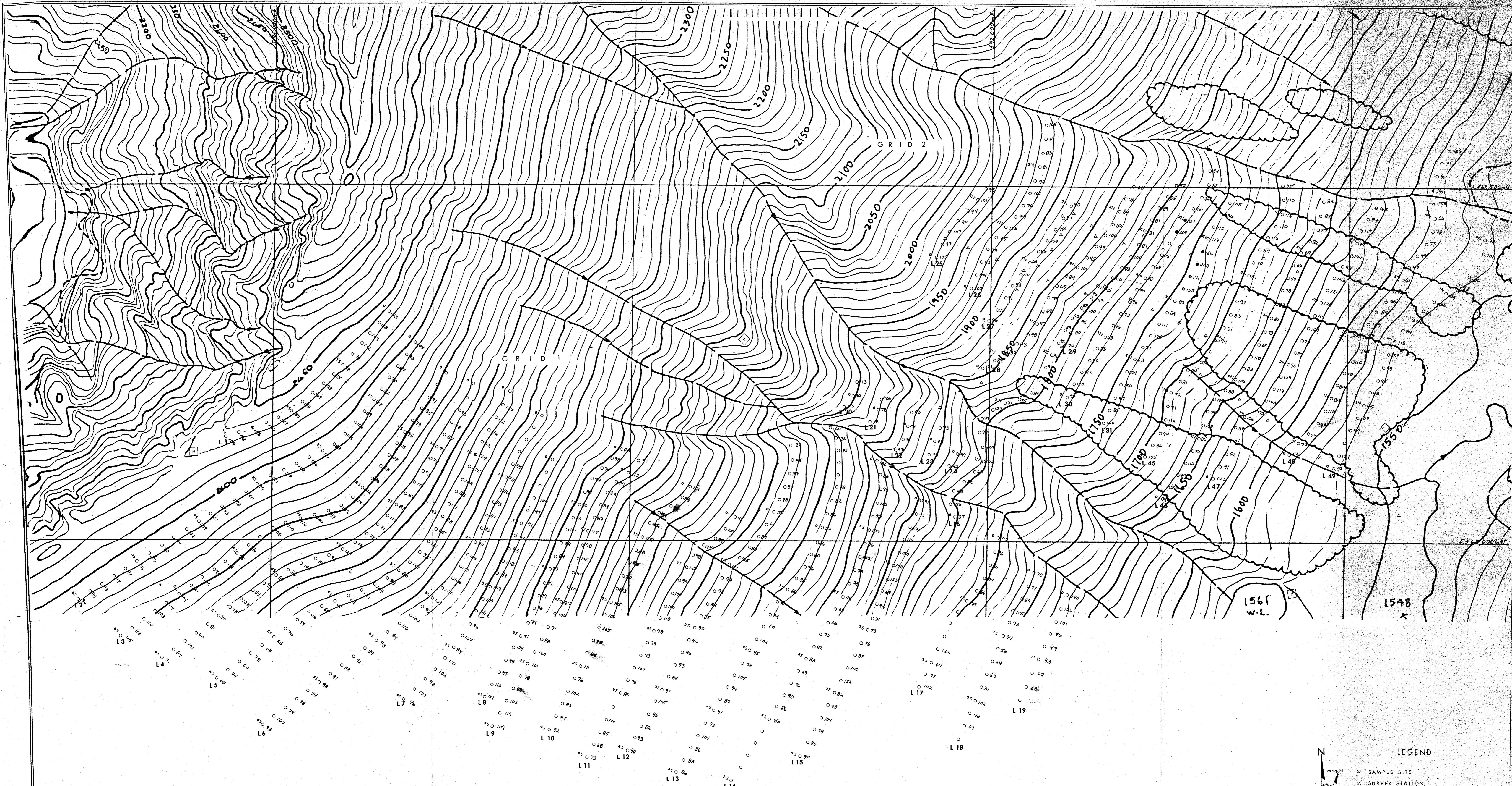
MT. ROACH PROPERTY  
 GOLD 1 GROUP NEAR LYTTON, B.C.  
 GRID 3  
 SOIL GEOCHEMISTRY  
 ppb Au

W.G. Smitheringale and Associates Ltd.  
 December 14, 1981



W.L.  
 1905

Base map by Integrated Resources Photography Ltd



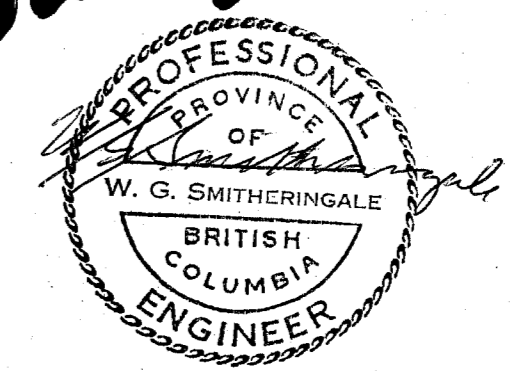
**LEGEND**

- SAMPLE SITE
- △ SURVEY STATION
- H HELICOPTER PAD
- A ADIT
- 185 ppm Zn, probably anomalous
- 155 to 184 ppm Zn, possibly anomalous

Scale 1:2000

0 50 100 150 200 METRES

**9919**  
NO  
**Part 2 of 2**



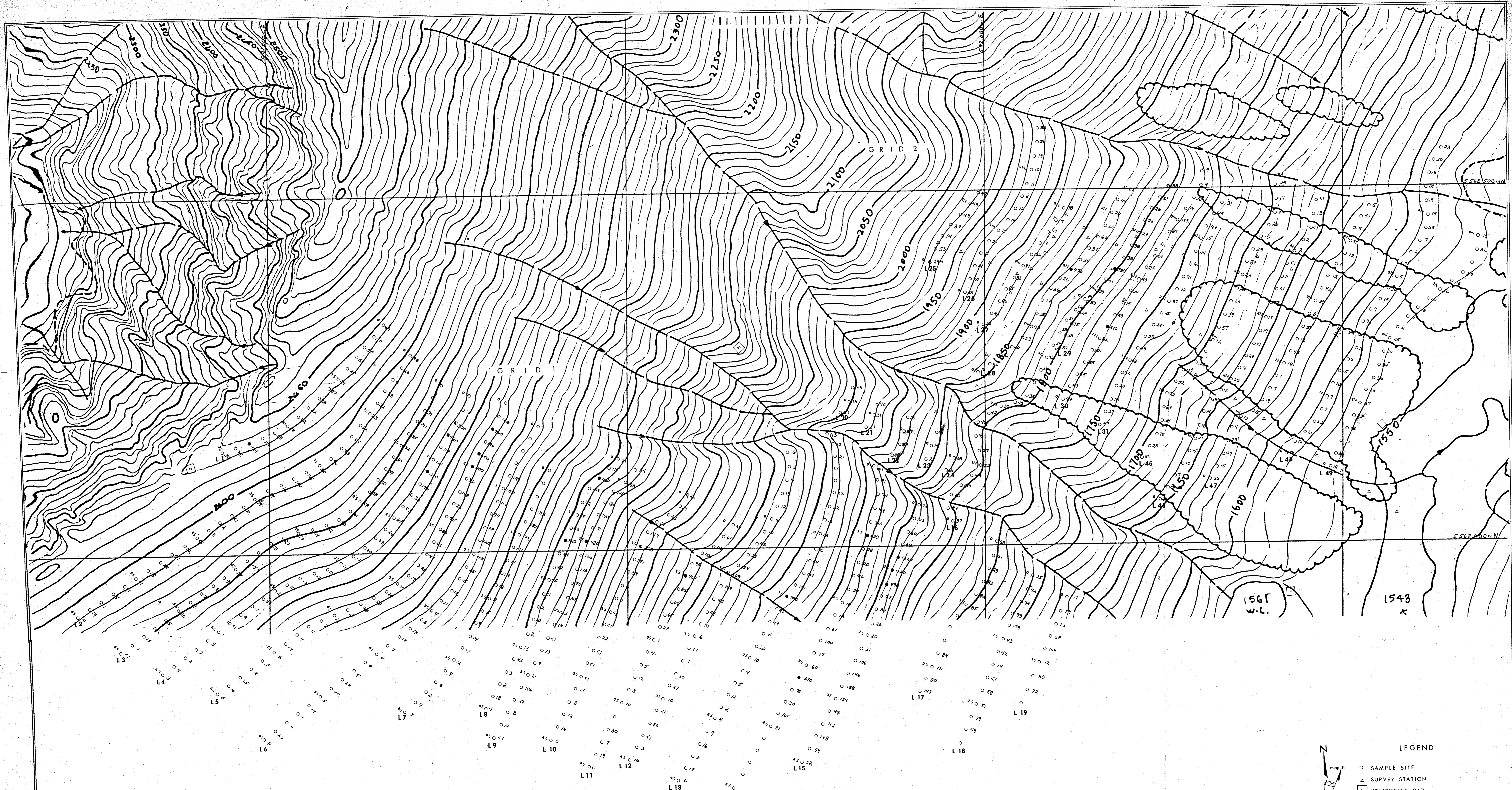
**FIGURE 7**

**REA PETRO CORPORATION**

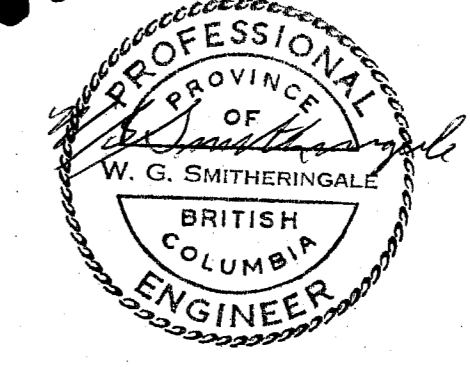
**MT. ROACH PROPERTY**  
GOLD 1 GROUP NEAR LYTTON, B.C.  
GRIDS 1&2  
SOIL GEOCHEMISTRY  
ppm Zn

W.G. Smitheringale and Associates Ltd.  
December 14, 1987

Base map by Integrated Resources Photography Ltd.



9919  
NO.  
Part 2 of 2



**LEGEND**

- SAMPLE SITE
- △ SURVEY STATION
- HELICOPTER PAD
- ≡ ADIT
- 400+ppm As, probably anomalous
- 200 to 369 ppm As, possibly anomalous

Scale 1:2000  
0 50 100 150 200 METRES

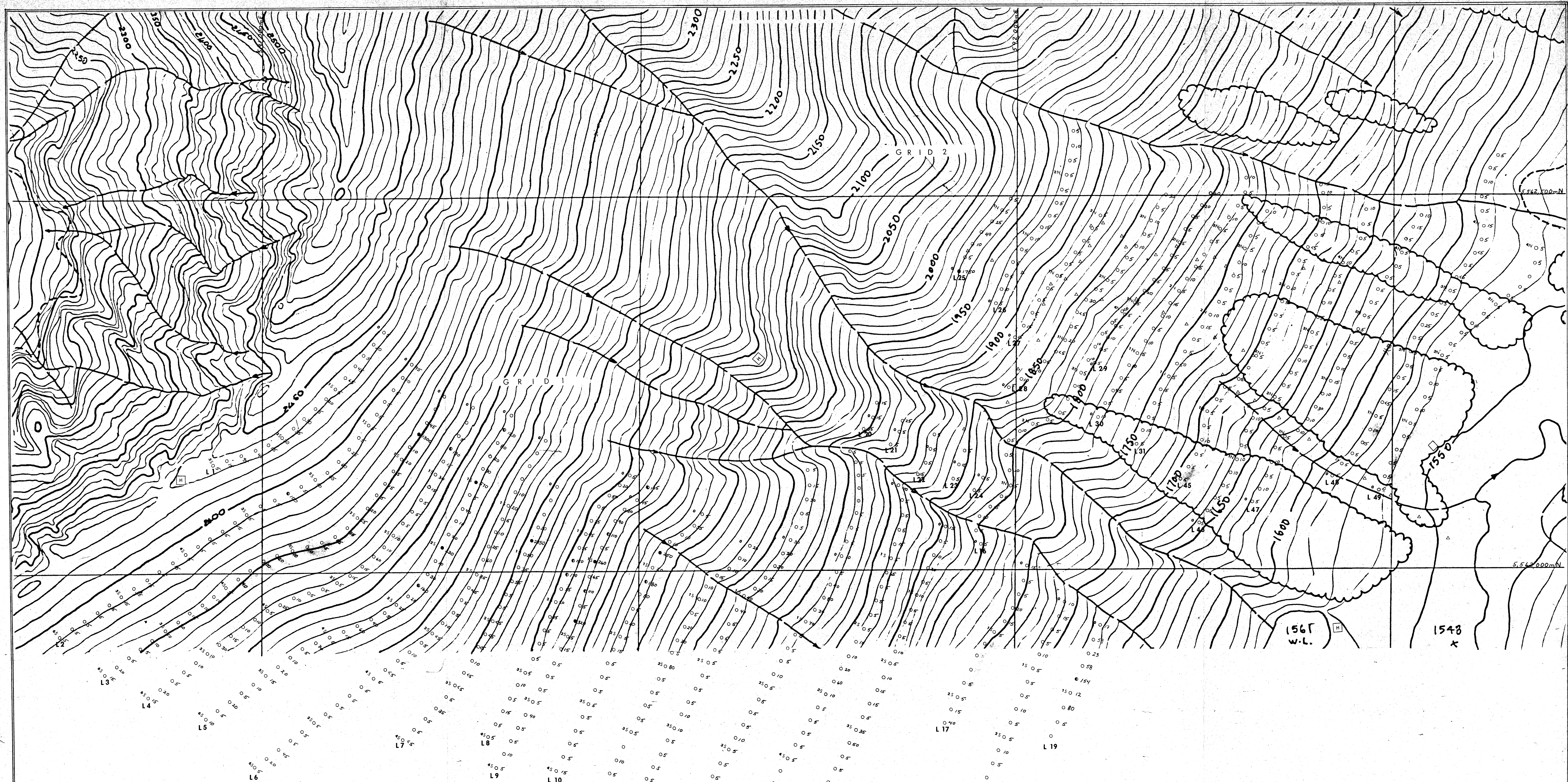
**FIGURE 6**

**REA PETRO CORPORATION**

**MT. ROACH PROPERTY**  
GOLD 1 GROUP NEAR LYTTON, B.C.  
GRIDS 1&2

**SOIL GEOCHEMISTRY**  
ppm As

W.G. Smitheringale and Associates Ltd.  
December 14, 1987



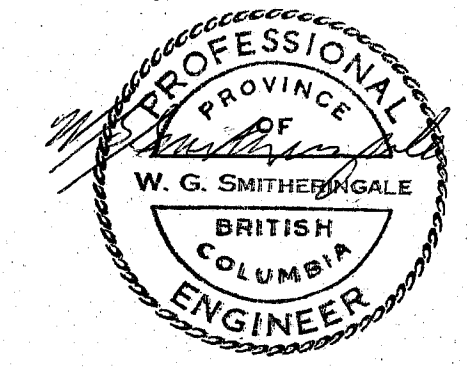
**LEGEND**

- SAMPLE SITE
- △ SURVEY STATION
- HELICOPTER PAD
- ∩ ADIT
- 200+ppb Au probably anomalous
- 100 to 199 ppb Au possibly anomalous

Scale 1:2000

0 50 100 150 200 METRES

MINERAL RESOURCES BRANCH  
 ASSOCIATED SURVEY  
**9919**  
 NO.  
 Part 2 of 2



**FIGURE 5**

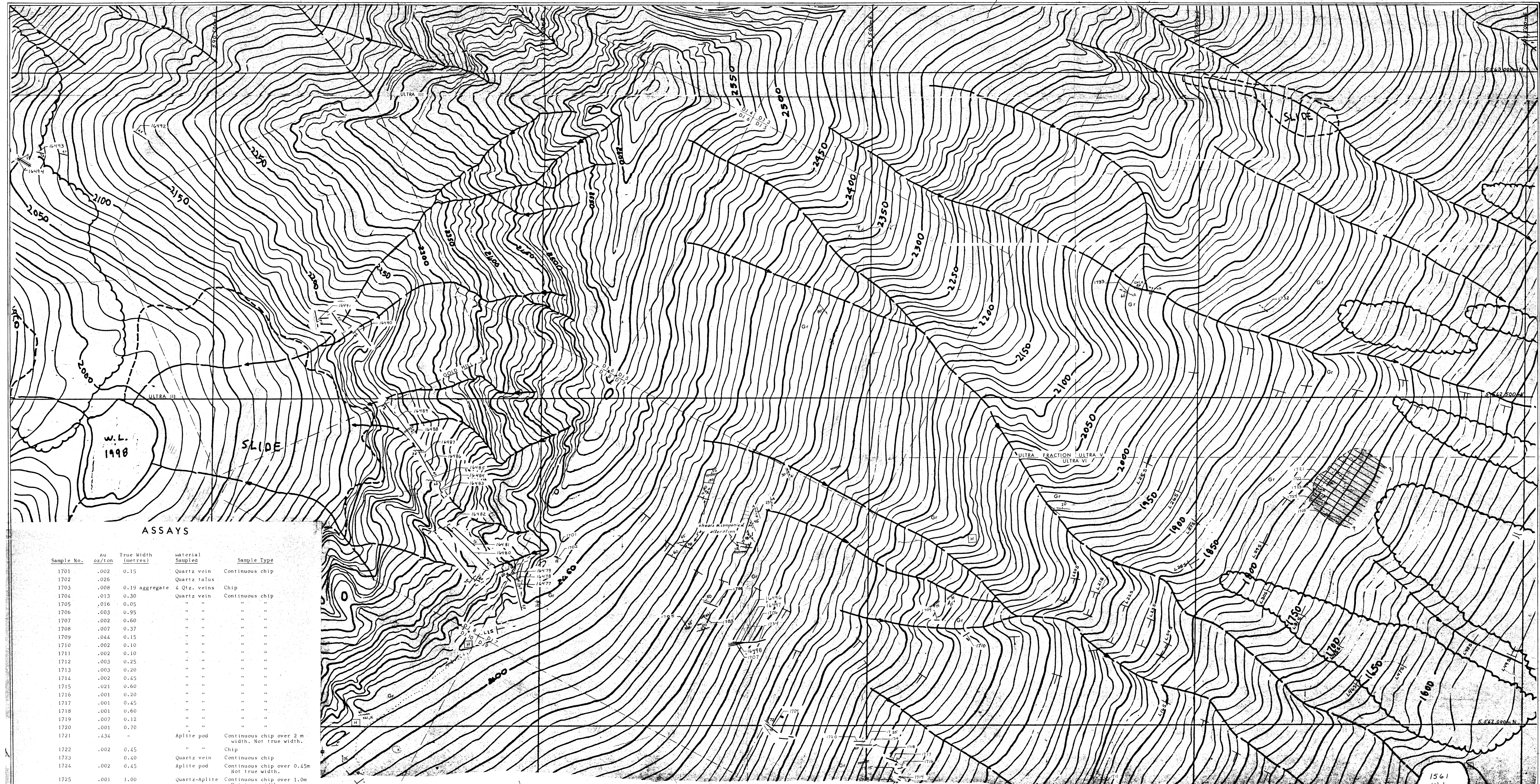
**AREA PETRO CORPORATION**

**MT. ROACH PROPERTY**  
**GOLD 1 GROUP NEAR LYTTON, B.C.**  
**GRIDS 1&2**  
**SOIL GEOCHEMISTRY**  
**ppb Au**

W.G. Smitheringale and Associates Ltd.  
 December 14, 1981

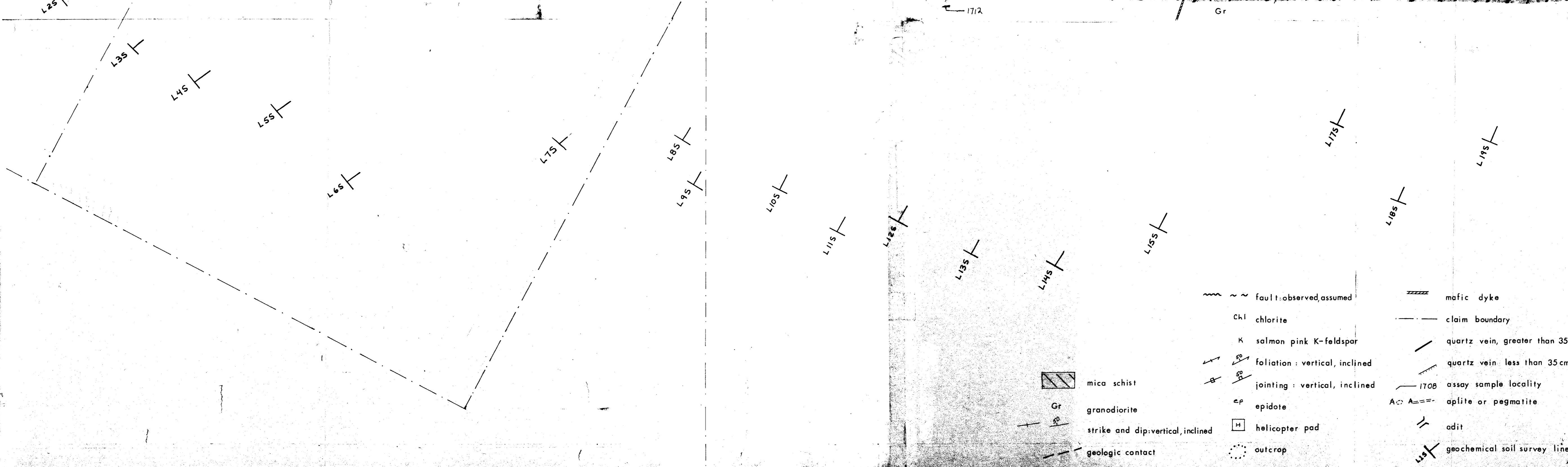
Data map by Integrated Resources Photography Ltd.



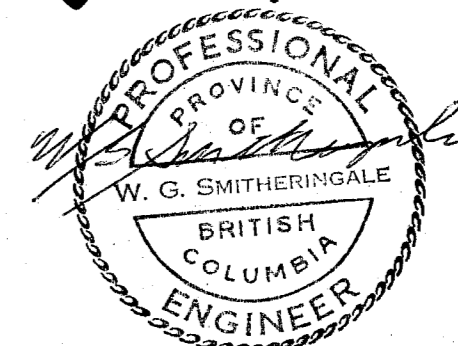


**ASSAYS**

Sample No.	Au oz/ton	True Width (metres)	material Sampled	Sample Type
1701	.002	0.15	Quartz vein	Continuous chip
1702	.026		Quartz talus	
1703	.008	0.19 aggregate	4 Qtz. veins	Chip
1704	.013	0.30	Quartz vein	Continuous chip
1705	.016	0.05	"	"
1706	.003	0.95	"	"
1707	.002	0.60	"	"
1708	.007	0.37	"	"
1709	.044	0.15	"	"
1710	.002	0.10	"	"
1711	.002	0.10	"	"
1712	.003	0.25	"	"
1713	.003	0.20	"	"
1714	.002	0.45	"	"
1715	.021	0.60	"	"
1716	.001	0.20	"	"
1717	.001	0.45	"	"
1718	.001	0.60	"	"
1719	.007	0.12	"	"
1720	.001	0.70	"	"
1721	.234	-	Aplite pod	Continuous chip over 2 m width. Not true width.
1722	.002	0.45	"	Chip
1723	.002	0.40	Quartz vein	Continuous chip
1724	.002	0.45	Aplite pod	Continuous chip over 0.45m Not true width.
1725	.001	1.00	Quartz-Aplite	Continuous chip over 1.0m Not true width.
1732	.001	0.60	aplite dyke	Continuous chip
1733	.001	0.37	Pegmatite	"
1734	.006	0.30	Quartz vein	Chip
1735	.020	6.00	Quartz veins & altered granite	Continuous chip
16476	.021	0.2 aggregate	3 or 4 Qtz. veins	Chips
16477	.012	0.1	2 Qtz. veins	"
16478	.008	0.50	Quartz vein	Continuous chip
16479	.260	0.30	"	"
16480	.012	0.55	"	"
16481	.003	0.30	"	"
16482	.075	-	Quartz talus	Composite grab of chips from trench floor
16483	.130	1.70	Quartz vein	Continuous chip
16484	.056	0.45	"	"
16485	.110	1.20	"	"
16486	.140	1.85	"	"
16487	.208	1.00	"	"
16488	.050	1.40	"	"
16489	.063	1.10	"	"
16490	.003	1.30	"	"
16491	.009	0.20	"	"
16492	.009	0.60	"	"
16493	.036	0.15	"	"
16494	.027	1.10	"	"
16495	.002	0.2 aggregate	Several Qtz. veins	Chips
16496	.009	0.50	Quartz vein	Continuous chip
16497	.007	0.60	"	"
16498	.002	0.70	"	"



**9919**  
Part 2 of 2



Scale 1:2,000  
0 50 100 150 200 METRES  
**FIGURE 4**

**REA PETRO CORPORATION**  
**MT. ROACH PROPERTY**  
**GOLD 1 GROUP NEAR LYTTON B.C.**  
**GEOLOGY**  
**and**  
**ASSAY PLAN**

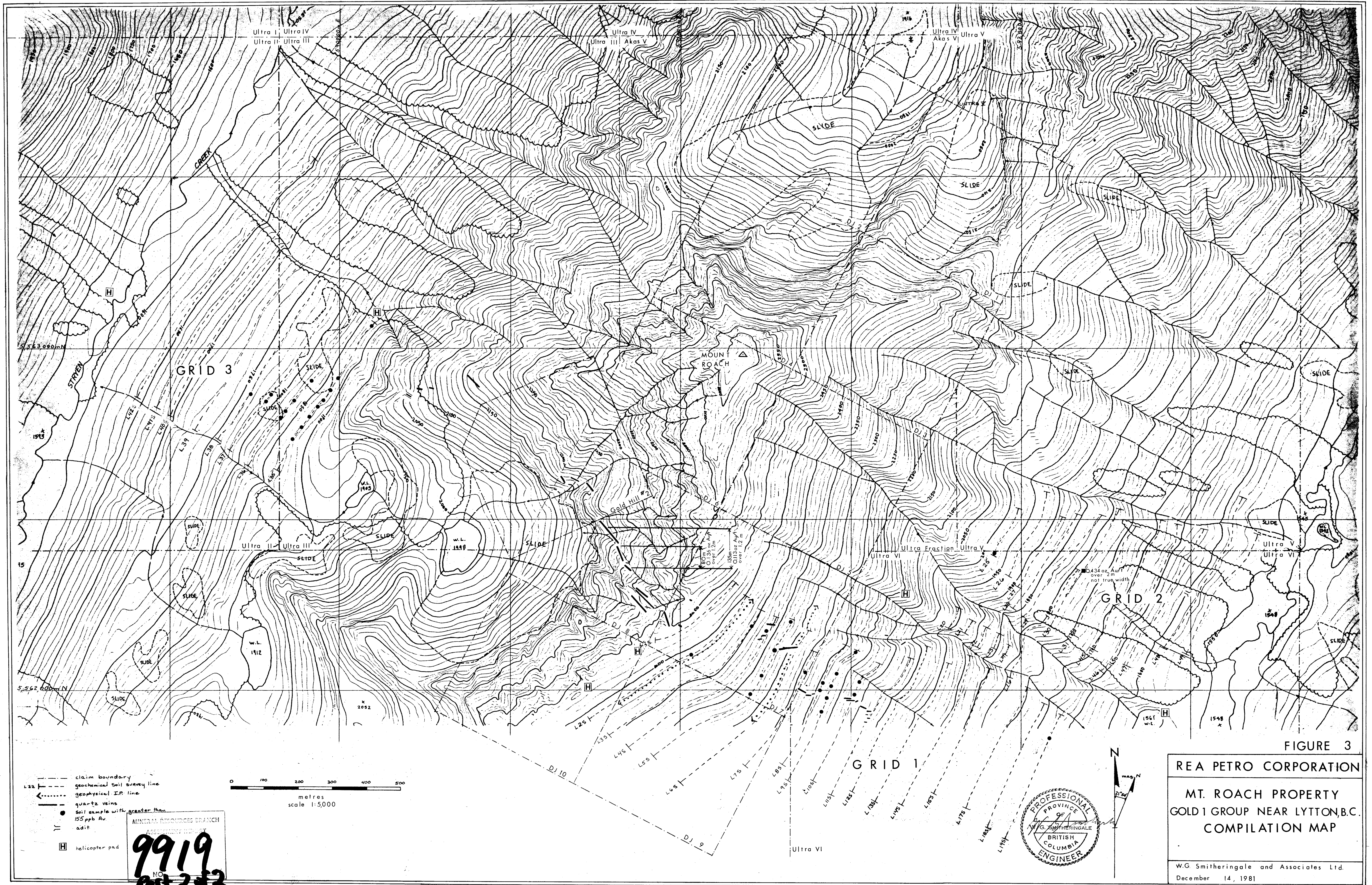


FIGURE 3

REA PETRO CORPORATION  
 MT. ROACH PROPERTY  
 GOLD 1 GROUP NEAR LYTTON, B.C.  
 COMPILATION MAP  
 W.G. Smitheringale and Associates Ltd.  
 December 14, 1981

MINERAL RECORDERS BRANCH  
 ASSOCIATION OF BC  
**9919**  
 NO. **252**