

81-# 1044.-9924

TELEPHONE (604) 596-1331

McINTYRE ASSOCIATES
MINING & GEOLOGICAL CONSULTANTS
7001 WESTVIEW DRIVE
DELTA, B.C. V4E 2L7

DRILLING REPORT

PB GROUP
BABETTE LAKE, B.C.

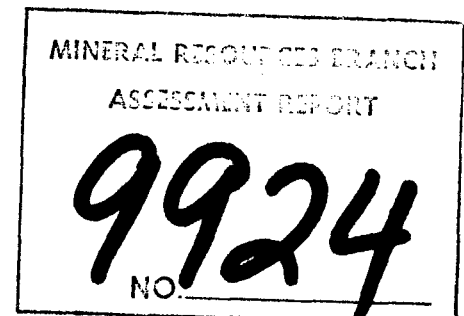
CARIBOO & LIARD MINING DIVISIONS

MAP NO. M93I/IE; M93I/IW

54°05' NORTH
120°15' WEST

OWNERS: PAUL L. BORSUK and PAUL PIATOCKA
OPERATOR: BABETTE LAKE QUARTZITE PRODUCTS LTD.
CONSULTANTS: McINTYRE ASSOCIATES
AUTHOR: J. F. McINTYRE, P. ENG.

NOVEMBER 13, 1981



McINTYRE ASSOCIATES

TABLE OF CONTENTS

	PAGE
INTRODUCTION	1
TECHNICAL DATA AND INTERPRETATION	
Discussion	2
Log DH 81-1	3
Log DH 81-2	4
Log DH 81-4	5
ITEMIZED COST STATEMENT	
Discussion	6
Itemized Costs	7
AUTHOR'S QUALIFICATIONS	8

ILLUSTRATIONS

Figure 1	Index Map	1:50,000
Figure 2	Plan	1:5,000

McINTYRE ASSOCIATES

Page 1.

INTRODUCTION

The PB GROUP of mineral claims are situated on the Continental Divide near Babette Lake in Eastern British Columbia, 170 KM east of Prince George at coordinates 54 05' N, 120 15' W.

Access is by air at present. Road access exists from Prince George, thence via the Walker Creek Forest Road into the McGregor River Valley to within 50 KM of the claims. This 50 KM of access road is currently under construction by the Operator of the claims, Babette Lake Quartzite Products Ltd. of Richmond, B.C. The registered owners of the claims are Paul L. Borsuk of Richmond, B.C., and Paul Piatocka of Surrey, B.C.

The property consists of 6 contiguous modified grid mineral claims totalling 81 units, located in Cariboo and Liard Mining Divisions, shown on Figure 1, as follows:

<u>Name</u>	<u>No. of Units</u>	<u>Record No.</u>	<u>Registered Owner</u>	<u>Mining Division</u>
PB 1	12	1920	P.L. Borsuk	Cariboo
PB 2	20	1921	P.L. Borsuk	Cariboo
PB 3	20	1922	P.L. Borsuk	Cariboo
PB 4	8	1923	P.L. Borsuk	Cariboo
PB 5	12	1573	P.L. Borsuk	Liard
PIA A	9	1802	P. Piatocka	Liard

In addition, the owners hold a 40 acre Crown Land Lease, Lot 3283, Peace River District, located within the PIA A Claim.

High quality quartzite suitable as building stone has been known to occur on the property for at least a decade or more. Lot 3283 was acquired for quarrying purposes in 1972. The present owners, subsequently acquired the lot, and the mineral claims were staked in 1980.

During early 1981, the operator moved in camp, heavy machinery and fuel over a winter road from Grande Prairie, Alberta. They commenced construction of the access road and conducted exploratory work on the PB Group claims and on adjacent property.

TECHNICAL DATA AND INTERPRETATION

DISCUSSION

The principal exploratory work carried out on the PB Group was surface diamond drilling. Three drill holes totalling 905.5 feet (276 meters) designated DH 81-1, DH 81-2 and DH 81-4, were put down in the PB Group, all in the PIA A claim, as shown in Figure 2.

High quality quartzite building stone occurs within various stratigraphic intervals of the Mahto Formation of Lower Cambrian age. The formation is in excess of 700 feet thick on the claims.

The principal purposes of the drill holes were two-fold. The first was to cut the entire quartzite section in order to clearly identify those intervals suitable for quarrying. The second was to provide core samples of each texture and colour of stone available for sale for demonstration to prospective buyers. The program satisfied both purposes. Those intervals suitable for quarrying are shown on the enclosed logs. No chemical analysis or physical testing has been carried out on the core.

The core, some of which has been sawn, is stored securely under cover at 9960 Sidaway Road, Richmond, B. C.

The first markets expected to be penetrated are in the United States and Imperial units are used there in the stone trade. Accordingly, the drill holes were logged in Imperial rather than S.I. units.

COLLAR:—

LAT.
 DEP.
 ELEVATION 6310'
 AZIMUTH N80°E
 DIP 75°E

1 FT = 0.305 M

DIP TEST		
FOOTAGE	ANGLE	
	READING	CORRECTED

PROPERTY Babette Lake Quart
 HOLE NO. DH81-1
 COMMENCED
 FINISHED Logged Aug. 7, 1981
 PURPOSE OF HOLE
 LOGGED BY: R.F. McIntyre

FOOTAGE	DESCRIPTION	CORE SAMPLES						
		SAMPLE NO.	FROM	TO	WIDTH	ASSAY	WIDTH X ASSAY	SAMPLE NO.
0'-32.5'	Qtzt, pink, speckled, wide frx, good quality rock							
32.5'-67'	Qtzt, pale pink, massive & speckled, med-close frx,							
67'-77'	Qtzt, pink grades into purple, light bedded, med frx, occnl. red bed.							
77'-100'	Qtzt, purple, close bedded, wide frx, high quality rock							
100'-131'	Qtzt, red to pink, usually near massive, med frx.							
131'-161'	Qtzt, red, close bedded, med frx							
161'-213'	Qtzt, variable texture & colour, close frx							
213'-239'	Qtzt, grey-purple, close bedded, med wide frx, high quality rock							
239'-279'	Qtzt, red & grey, variable bedding, med frx							
279'-298'	Qtzt, lt grey, nearly massive, med-wide frx							
298'-340'	Qtzt, purple-red, thin bedded, med frx							
340'-356'	Qtzt, grades into pink, med bedded, close frx							
356'-480'	Closely interbedded lt grey qtzt and black, fissile shale							
480'-494'	Qtzt, white, massive, occul whisps blk shale							
494'-502'	Qtzt, lt grey, occul thin beds & whisps blk shale							
502'-531'	Qtzt, massive to med bedded, white to lt pink, shale beds	520'		522'				
531'-575'	Qtzt, white, massive, occul beds blk shale							
575'-607'	Closely interbedded white qtzt and black shale							
	End Hole							

Angle of Beds to Core Axis 85-90° throughout

[Handwritten Signature]

COLLAR:—

LAT.
 DEP.
 ELEVATION
 AZIMUTH
 DIP

5800'
 N80°E
 75°E

1 FT = 0.305 M

DIP TEST		
FOOTAGE	ANGLE	
	READING	CORRECTED

PROPERTY Babette Lake Quartzite
 HOLE NO. DH81-2
 COMMENCED
 FINISHED Logged July 31, 1981
 PURPOSE OF HOLE
 LOGGED BY: R.F. McIntyre

FOOTAGE	DESCRIPTION	CORE SAMPLES						
		SAMPLE NO.	FROM	TO	WIDTH	ASSAY	WIDTH X ASSAY	SAMPLE NO.
0'-16'	Overburden							
16'-64'	Qtzt, white, often massive, med frx, some Fe stain	}	Suitable for Quarrying					
64'-86'	Qtzt, pink, close bedded, med frx							
86'-110.5'	Qtzt, red to purple, close bedded, close frx							
110.5'-135.3'	Qtzt, red to purple, close bedded, med wide frx	}	Suitable for Quarrying					
135.3'-139.3'	Green shale and red siltstone, minor qtzt.							
139.3'-171'	Qtzt, variable colour & texture, med close frx							
171'-186'	Interbedded grey qtzt and red siltstone/green shale							
186'-204.5'	Qtzt, variable colour & texture, close frx							
204.5'-216'	Qtzt, white-lt grey, massive, med wide frx							
216'-220'	Thinly laminated black shale							
220'-243'	Closely interbedded black shale and lt grey quartzite							
	End Hole							
	Angle of beds to core axis 85-90° throughout							

R.F. McIntyre

COLLAR:—

LAT. _____
 DEP. _____
 ELEVATION 6340'
 AZIMUTH N80°E
 DIP 75°E

LFT = 0.305M

DIP TEST		
FOOTAGE	ANGLE	
	READING	CORRECTED

PROPERTY BABETTE LAKE QUARTZITE
 HOLE NO. DH81-4
 COMMENCED _____
 FINISHED Logged Aug. 19, 1981
 PURPOSE OF HOLE _____
 LOGGED BY: R.F. McIntyre

FOOTAGE	DESCRIPTION	CORE SAMPLES					SAMPLE NO.
		SAMPLE NO.	FROM	TO	WIDTH	ASSAY	
0'-23'	Qtzt, white-lt grey, massive, med frx, often Fe stained						
23'-41.5'	Qtzt, white-v light grey-pink, massive, wide frx some Fe spots						
41.5'-46'	Qtzt, pink, vague bedding, med frx						
46'-60.5'	Qtzt, lt pink, light bedding, red speckled, med frx						
	End Hole						
	Angle of beds to core axis 85 - 90° throughout						

R.F. McIntyre

ITEMIZED COST STATEMENT

DISCUSSION

Total exploratory expenditures during 1981 by the operator on the Babette Lake project were of the order of \$1,000,000. Diamond drilling was carried out on the PB Group but also on other adjacent groups. Drilling on the PB Group totalled 905.5 linear feet (38%) out of a total of 2,374 Lileal feet (100%) on all groups. For purposes of costs herein, 38% of direct total drilling costs have been taken. Drilling of the three holes on the PB Group commenced July 4th and finished about August 19th, 1981.

Drilling was conducted, under contract, by Drillcor Industries Ltd. of Richmond, B. C., using hydraulic drilling equipment of their own manufacture. All holes were cored throughout with BQ size equipment. Crews were housed in the Operators camp and flown daily from camp to the drillsites by Bell 206 helicopter. Helicopter hours listed herein are also pro-rata to the total for the diamond drilling program only.

Drilling was carried out on two 12-hour shifts per day with a crew of 2 men per shift. Drillers were supplied and paid by Drillcor. Helpers were supplied and paid by the Operator. The helicopter and pilot were supplied by the Operator. Food and lodging were supplied by the Operator.

Principal personnel were as follows:

Helicopter Pilot:	Philip Jarman
Drillers:	Terrance Bremner, John Velcamp
Drill Helpers:	Terrance Cardle, Shaun Bence

Itemized costs listed hereafter total \$78,356.00. These will be seen to be in excess of the \$60,000.00 estimated at the time of filing the work on September 4th, at which time all detailed costs were not at hand.

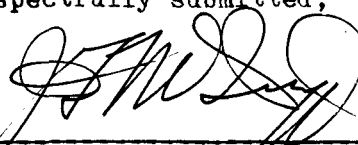
AUTHORS QUALIFICATIONS

The drilling program was directed by McIntyre Associates on a consulting fee basis. In addition, Mr. J.F. McIntyre acted within his appointed capacity of General Manager. Core was logged by R.F. McIntyre.

J.F. McINTYRE, B.Sc., P.Eng.
B.Sc. Mining Engineering
University of Alberta, 1949

R.F. McINTYRE, B.Sc.
B.Sc. Geology
University of British Columbia, 1977

Respectfully submitted,



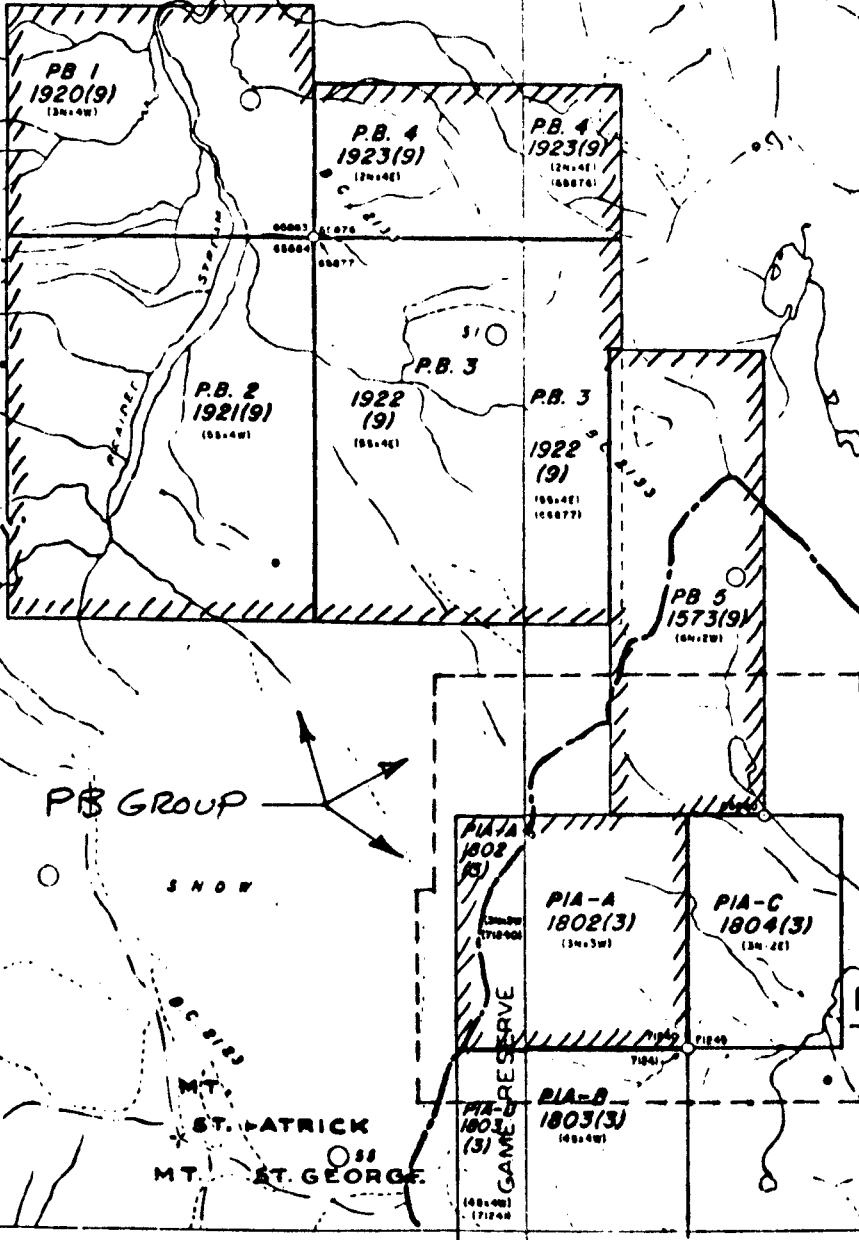
J.F. McINTYRE, P.Eng.

Jarvis Lakes

[Handwritten signature]

10

MT. ST. ANDREWS



AREA OF FIGURE 2

PB GROUP

MT. ST. PATRICK
MT. ST. GEORGE

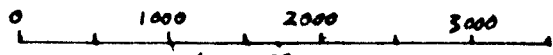
McINTYRE ASSOCIATES
CONSULTANTS
DETA. 15/

BABETTE LAKE
QUARTZITE PRODUCTS LTD.

PB GROUP

INDEX MAP

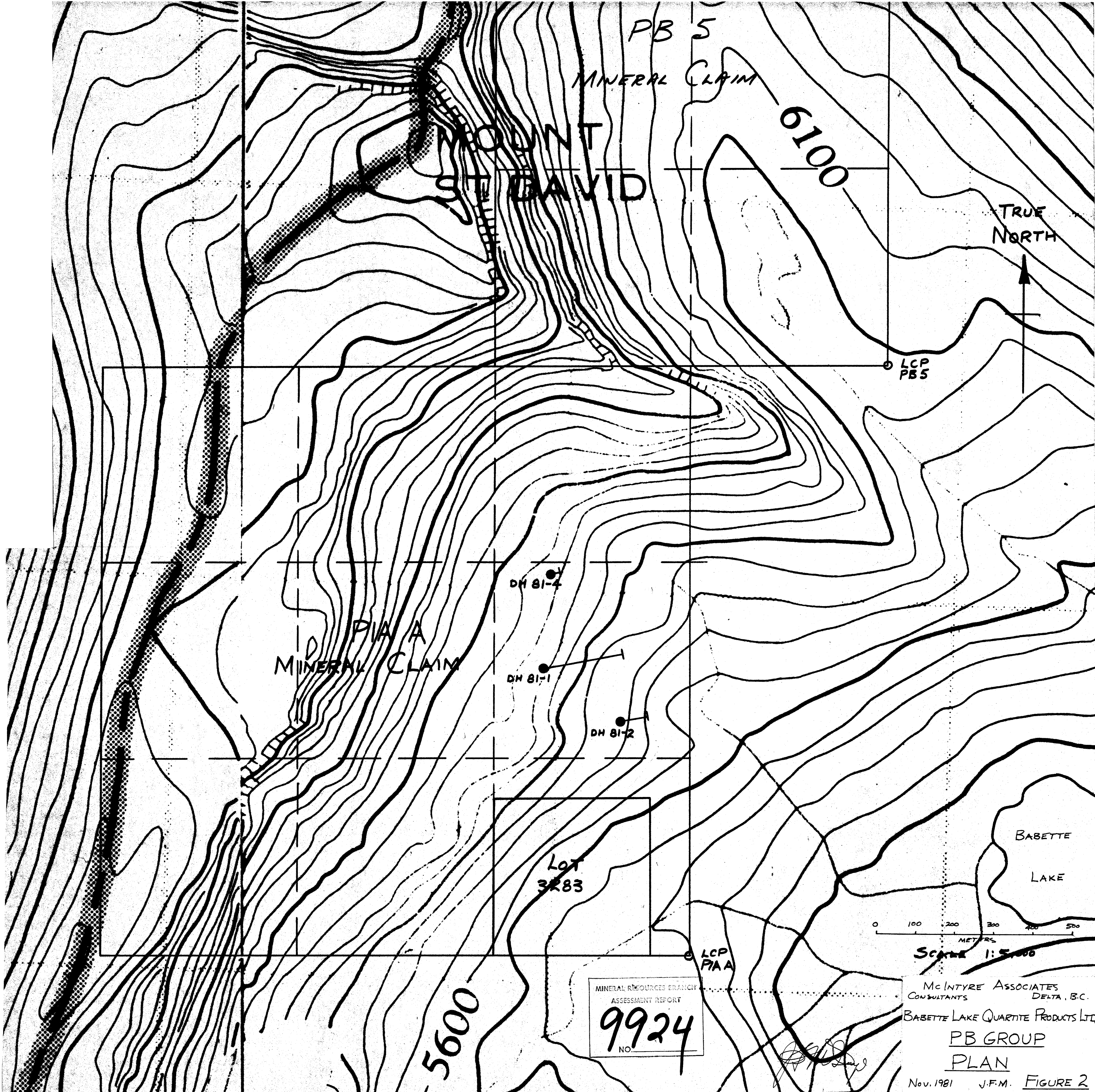
CARIBOO & LIARD MINING DIVISION



SCALE 1:50,000

Nov. 1981 J.F.M. FIGURE 2

This map is prepared only as a guide to the local mineral claims and Placer Mining Leases at



PB 5
MINERAL CLAIM

MOUNT
ST DAVID

6100

TRUE
NORTH

LCP
PB 5

PIA A
MINERAL CLAIM

DH 81-4

DH 81-1

DH 81-2

Lot
3283

LCP
PIA A

BABETTE
LAKE

0 100 200 300 400 500
METERS

Scale 1:5,000

MINERAL RESOURCES BRANCH
ASSESSMENT REPORT
9924
NO.

McINTYRE ASSOCIATES
CONSULTANTS DELTA, B.C.

BABETTE LAKE QUARTZITE PRODUCTS LTD.

PB GROUP
PLAN

Nov. 1981 J.F.M. FIGURE 2