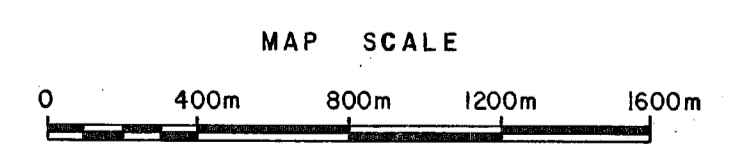


LEGEND

- UPPER MIOCENE AND/OR PLIOCENE
- 5 Chilcatin GP. Olivine basalt, minor andesite, sometimes vesicular or amygdaloidal
- LOWER CRETACEOUS
- 3 Taylor GP. Dark grey to black shale and siltstone, chert pebble conglomerate, sandstone
- JURASSIC AND/OR OLDER ?
- 2 Diorite, minor quartz diorite
- TRIASSIC
- 1 Peridotite (harzburgite) serpentized peridotite
- Inferred Geological Contact
- Outcrop
- Outcrop with cliff
- Shear zone
- Strike and dip
- Soil line
- Lineament of 5800 Isogam displacement
- Rock Sample Number Cu/Au/As/Ni

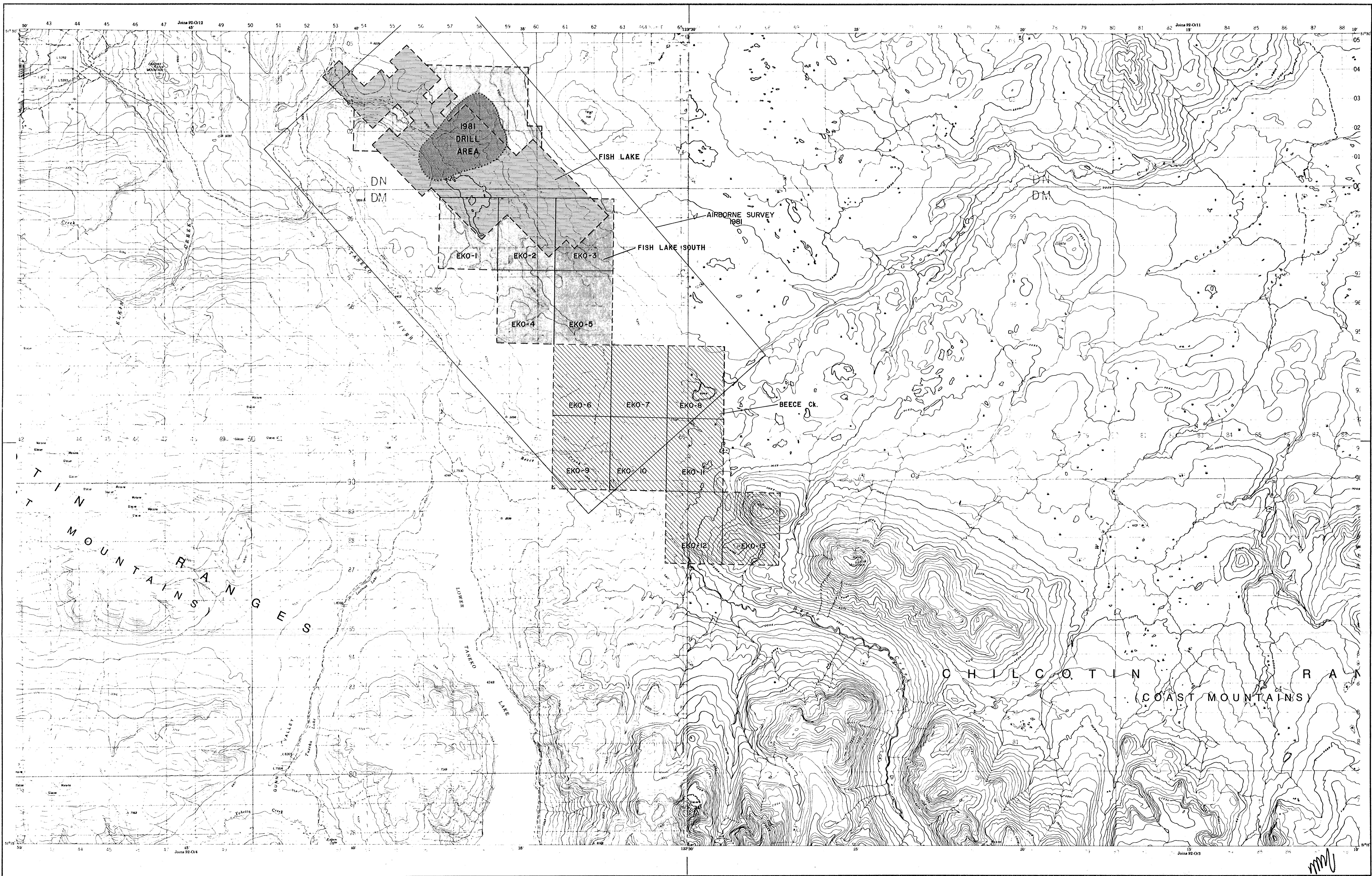


N.T.S. 920/5E-6W

Drawn by: J.C.C.	Traced by: H.H.
Checked by: []	Reviewed by: []
Date: []	Date: []

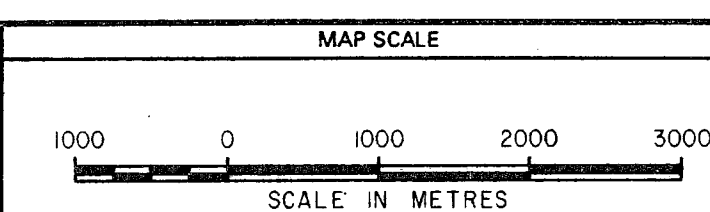
**BEECE CREEK
 GEOLOGICAL MAP**

Scale: 1 : 20,000 Date: AUGUST, 1981 Plate: 2



--- CLAIM BOUNDARY

MINERAL RESOURCES BRANCH
ACCESSIBILITY REPORT
9932
Part 3 of 3



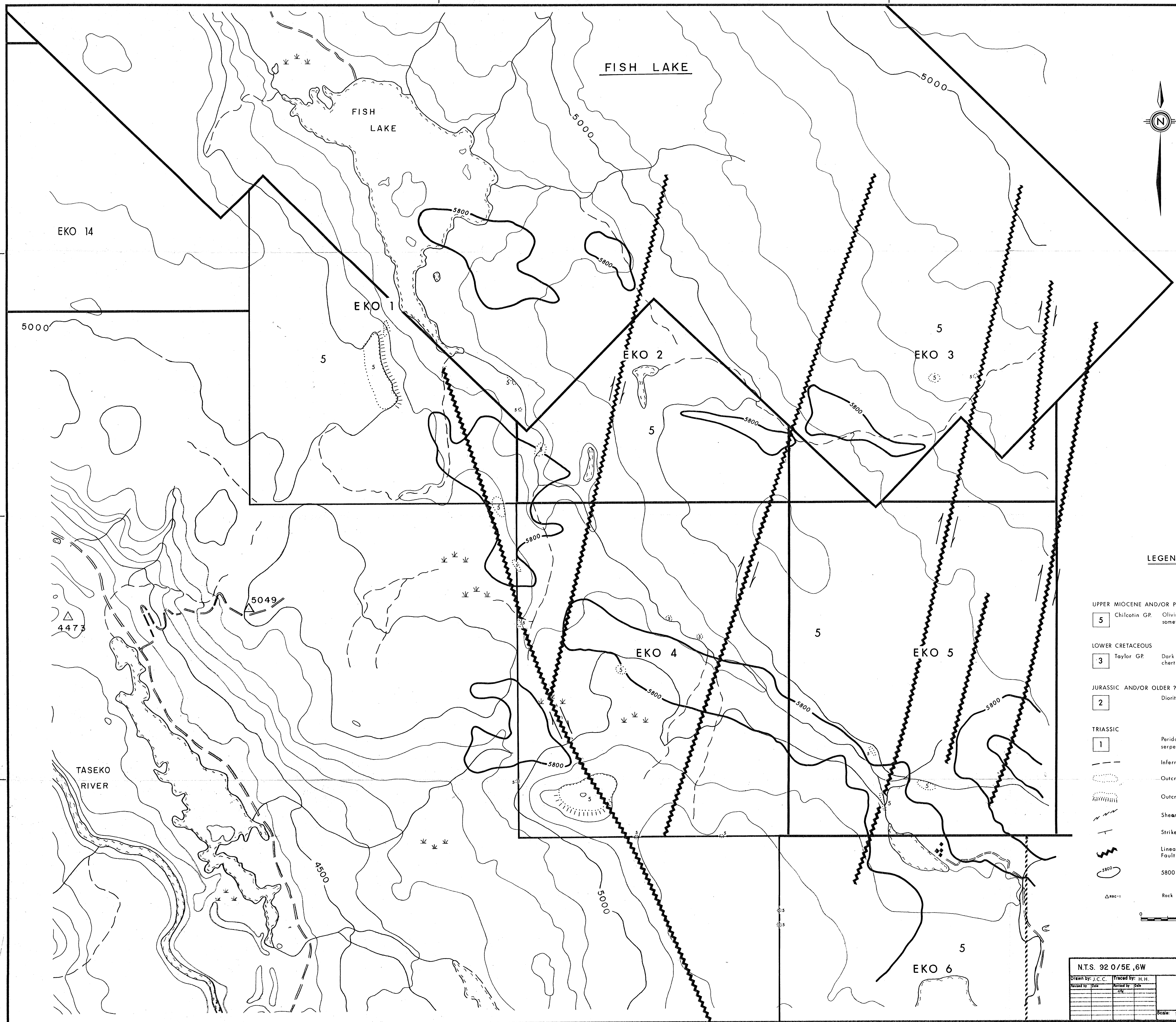
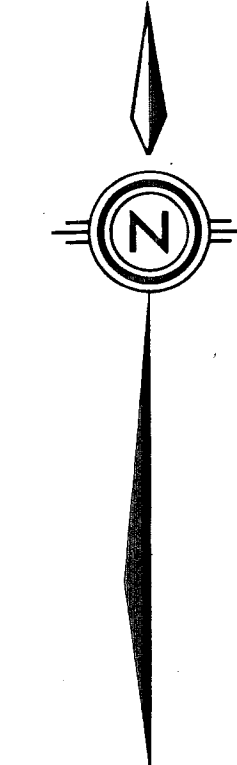
NO.	DATE	MADE BY	DESCRIPTION
1			
2			
3			
4			
5			

B BETHLEHEM
COPPER
CORPORATION

PLATE I
FISH LAKE PROJECT
LOCATION PLAN
AIRBORNE GEOPHYSICS
EKO-1 TO 13 MINERAL CLAIMS

DATE	DRAWN BY	CHECKED	APPROVED	OFFICE	DEPARTMENT	MAP INDEX NUMBER	SCALE	DRAWING NUMBER
MAY 1981	a.m.b.			VANCOUVER	EXPLORATION	N.T.S. 92-0/5,6	1:50 000	

9932
Part 3 of 3



LEGEND

- UPPER MIOCENE AND/OR PIOCENE
- 5 Chilcotin GP. Olivine basalt, minor andesite, sometimes vesicular or amygdaloidal
- LOWER CRETACEOUS
- 3 Taylor GP. Dark grey to black shale and siltstone, chert pebble conglomerate, sandstone
- JURASSIC AND/OR OLDER ?
- 2 Diorite, minor quartz diorite
- TRIASSIC
- 1 Peridotite (harzburgite) serpentized peridotite
- - - - - Inferred Geological Contact
- Outcrop
- ▨ Outcrop with cliff
- ▧ Shear zone
- +— Strike and dip
- ⚡ Lineament of 5800 isogam displacement; Fault (?)
- 5800 Isogam
- △_{ROC-1} Rock Sample Number Cu / Au / As / Ni
- MAP SCALE
- 0 800 m

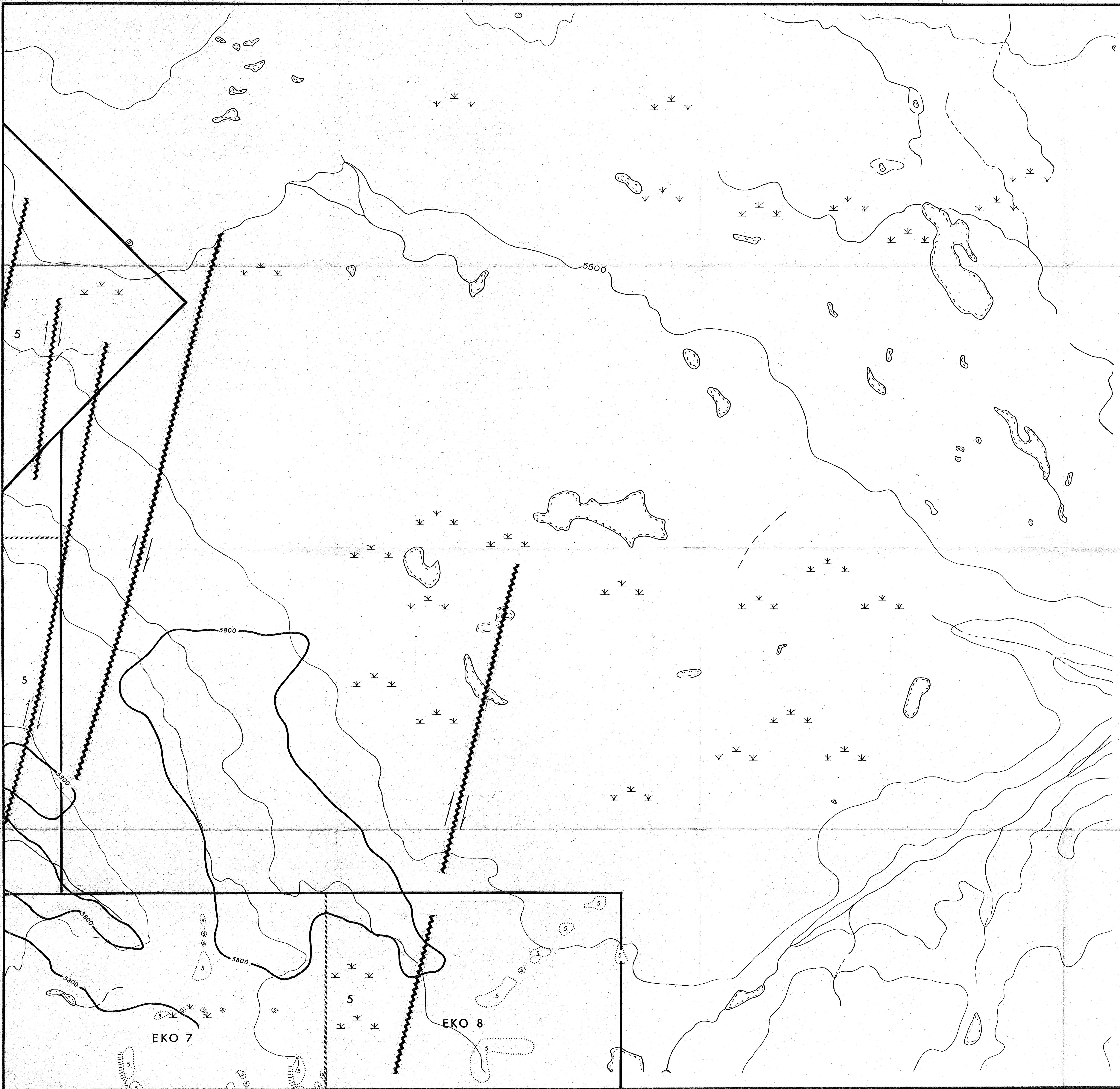
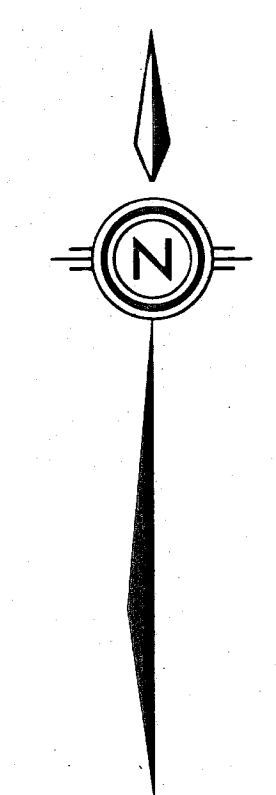
N.T.S. 92 O / 5E, 6W

Drawn by: J.C.C.	Traced by: H.H.
Checked by: []	Revised by: []
Scale: 1:10,000	Date: AUGUST, 1981
Plate: 3	

**BEECE CREEK
GEOLOGICAL MAP (NW)**

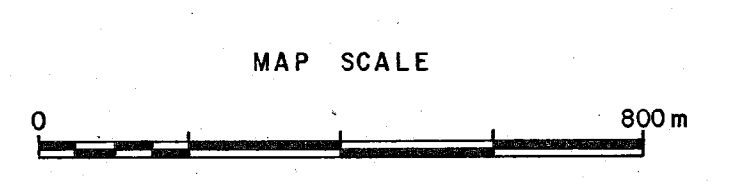
Scale: 1:10,000 Date: AUGUST, 1981 Plate: 3

AMERICAN GEOPHYSICAL SOCIETY
 NO. **9932**
 Part 3 of 3



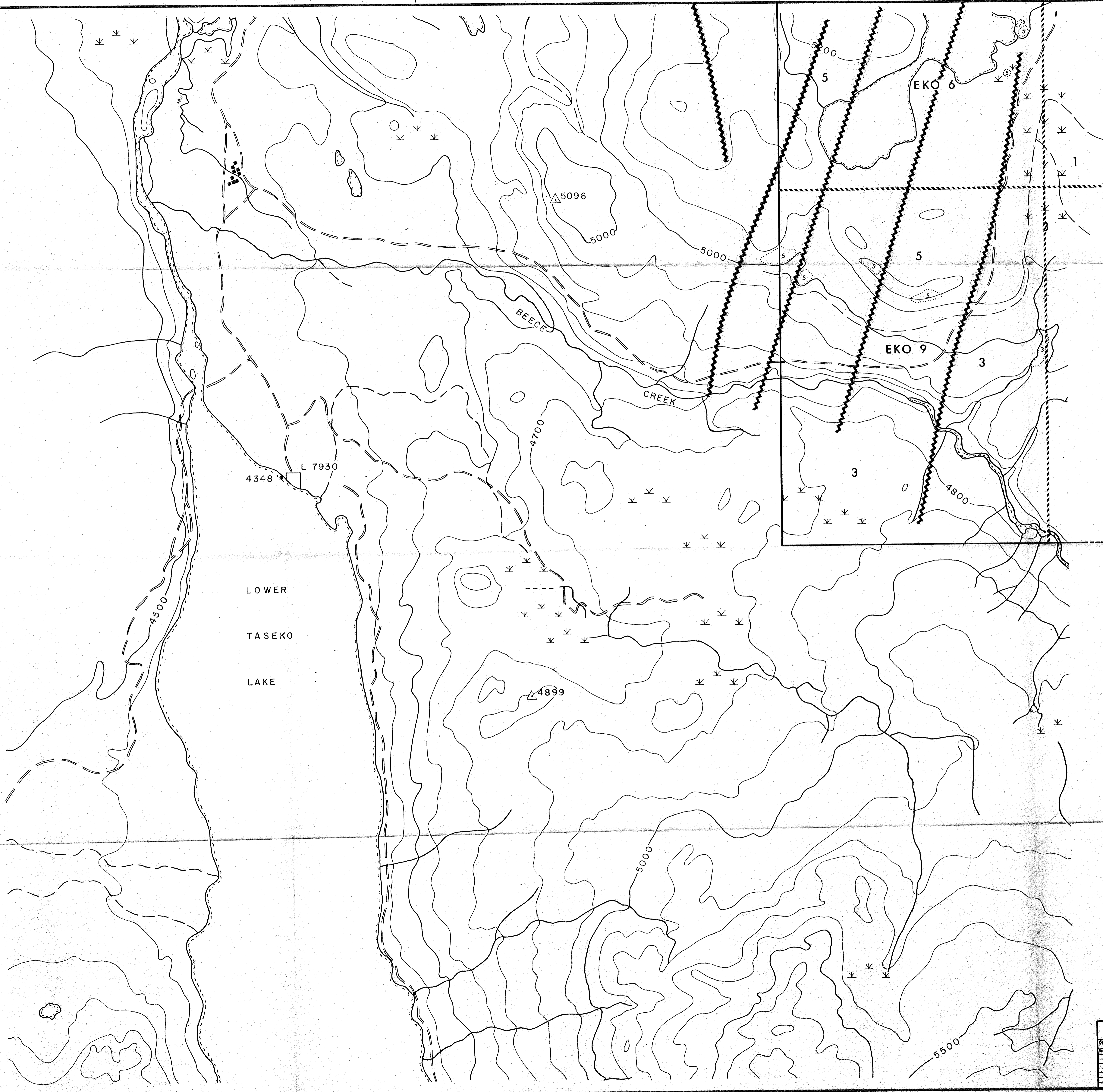
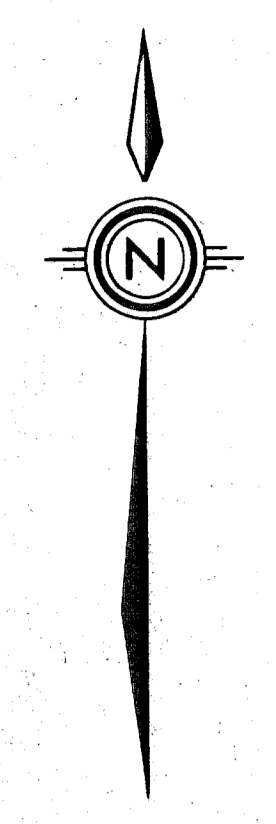
LEGEND

- UPPER MIOCENE AND/OR PIOCENE
- 5 Chitcotin GP Olivine basalt, minor andesite, sometimes vesicular or amygdaloidal
- LOWER CRETACEOUS
- 3 Taylor GP Dark grey to black shale and siltstone, chert pebble conglomerate, sandstone
- JURASSIC AND/OR OLDER ?
- 2 Diorite, minor quartz diorite
- TRIASSIC
- 1 Peridotite (harzburgite) serpentized peridotite
- - - - - Inferred Geological Contact
- Outcrop
- Outcrop with cliff
- /// Shear zone
- - - - - Strike and dip
- ~ Fault (?)
- 5800 Isogam
- △#80-1 Rock Sample Number Cu/Au/As/Ni



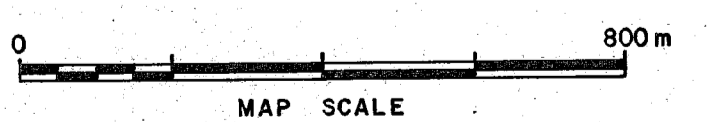
Drawn by J.C.C.		Traced by H.H.	
Checked by	Scale	Checked by	Scale
	250		250
N.T.S. 92 O/5 E-6W			
BEECE CREEK			
GEOLOGICAL MAP (N.E.)			
Scale: 1 : 10,000	Date: AUGUST, 1981	Plate: 4	PCMA 219-1000

MINERAL RESOURCES BOARD
 ACTING DIRECTOR
9932
 NO. 1
 Part 3 of 3



LEGEND

- UPPER MIOCENE AND/OR PLIOCENE
- 5** Chilcatin GP. Olivine basalt, minor andesite, sometimes vesicular or amygdaloidal
- LOWER CRETACEOUS
- 3** Taylor GP. Dark grey to black shale and siltstone, chert pebble conglomerate, sandstone
- JURASSIC AND/OR OLDER ?
- 2** Diorite, minor quartz diorite
- TRIASSIC
- 1** Peridotite (harzburgite) serpentized peridotite
- Inferred Geological Contact
- Outcrop
- ▨ Outcrop with cliff
- ~ Shear zone
- Strike and dip
- ~ Lineament of 5800 isogam displacement; Fault (?)
- 5800 Isogam
- △ Rock Sample Number Cu/Au/As/Ni



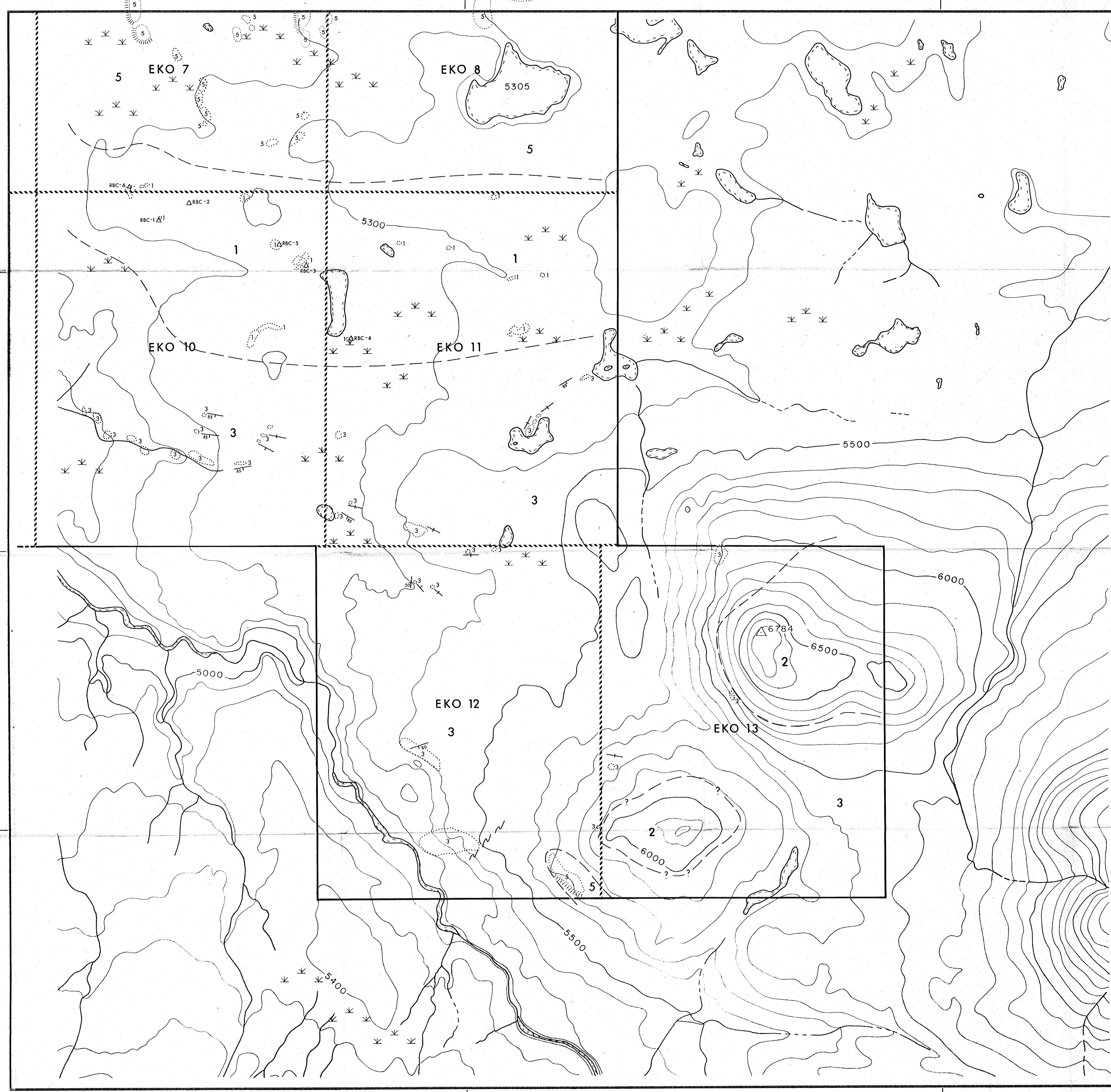
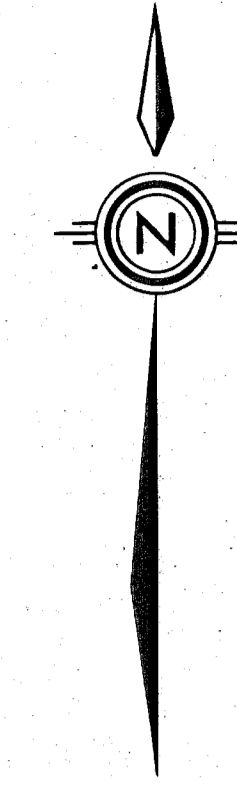
N.T.S. 92 O/5E-6W

**BEECE CREEK
 GEOLOGICAL MAP (S.W.)**

Drawn by: J.C.C.	Traced by: H.H.
Checked by: []	Checked by: []
Scale: 1:10,000	Date: AUGUST, 1981
Page: 5	

MM

MINERAL RESOURCES BRANCH
 9932
 Part 343



LEGEND

- UPPER MIOCENE AND/OR PLOICENE
 - 5 Chilcotin GP. Olivine basalt, minor andesite, sometimes vesicular or amygdaloidal
- LOWER CRETACEOUS
 - 3 Taylor GP. Dark grey to black shale and siltstone, chert pebble conglomerate, sandstone
- JURASSIC AND/OR OLDER ?
 - 2 Diorite, minor quartz diorite
- TRIASSIC
 - 1 Peridotite (harzburgite) serpentinized peridotite
- Inferred Geological Contact
- Outcrop
- Outcrop with cliff
- Shear zone
- Strike and dip
- Lineament of 5800 isogam displacement; Fault (?)
- 5800 Isogam
- Rock Sample Number Cu/Au/As/Ni

MAP SCALE
 0 800m

N.T.S. 92 O/5 E-6W

Drawn by: J.C.C.	Traced by: H.H.
Checked by: J.C.C.	Checked by: H.H.
Scale: 1:10,000	Date: AUGUST, 1981
Plate: 6	

**BEECE CREEK
 GEOLOGICAL MAP (S.E.)**

EKO 3

EKO 5

EKO 6

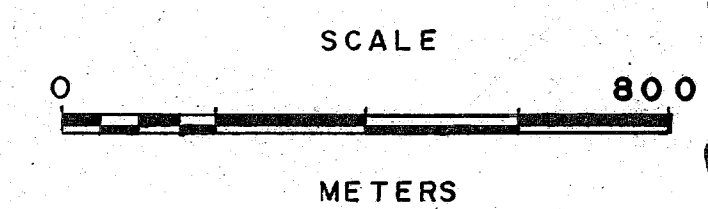
EKO 7

EKO 8



LEGEND

- ↑ 35/5 Soil Sample, Cu (ppm) / Au (ppb)
- Claim Boundary



9932
Pat 343

MINERAL RESOURCES BRANCH
ASSISTANT GEOPHYSICIST

NTS 920/5E	
Drawn by:	Traced by:
Checked by:	Reviewed by:
BEECE CREEK (NE) GEOCHEMICAL MAP (Cu-Au)	
Scale: 1:10,000	Date: Plate: 8

