

9955

A
SUMMARY REPORT
ON THE
PYTHON - NOONDAY PROPERTY
KAMLOOPS MINING DIVISION
PROVINCE OF BRITISH COLUMBIA

FOR
INTERNATIONAL MAKAOO LIMITED

BY
C. T. PASIEKA, P.ENG.
AUGUST 16, 1981

REFERENCE SHEET: M921/9W

CO-ORDINATES: 50° 36' N

120° 24' W

MINERAL RESOURCES BRANCH
ASSESSMENT REPORT
9958

(9955)

C. T. Pasieka P.Eng.

BOX 175, MAIN POSTAL STATION

KAMLOOPS, B.C. V2C 5K6

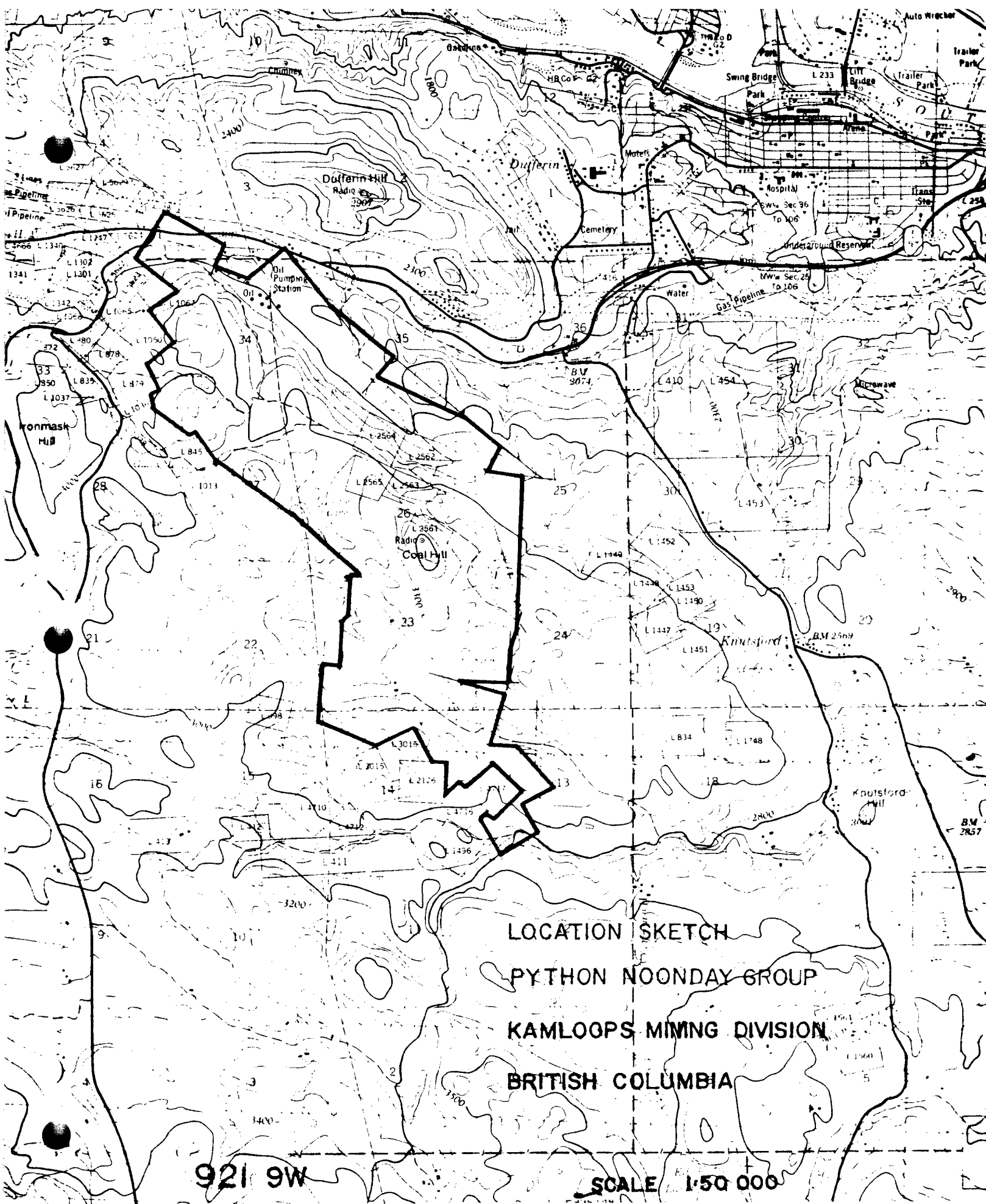
TABLE OF CONTENTS

	<u>PAGE</u>
Summary	1
Property	2 - 3
Location	4
Topography and Vegetation	4
History	5
Geology	6
Mineralization	7
Work Programme	8
Discussion	9 - 10
Conclusions and Recommendations	10
Certification	11
Bibliography	12
Appendix: Percussion Hole Assays	

PROPERTY

The Python - Noonday consisting of sixty seven (67) located mineral claims and five (5) crown granted mineral claims in a contiguous group, lie within the SW limits of the City of Kamloops. The individual claims comprising the property are listed as follows:

<u>CLAIM</u>	<u>RECORD NUMBER</u>
Python 3 - 7 incl.	13887-91 incl.
Python 8 Fr.	13892
Python 15	13899
Python 16 Fr.	13900
Cub 9 - 10	13903 - 04
Cub 3 - 6 incl.	13907 - 10 incl.
Dot 2 - 3	15701 - 02
Dot 5	15704
Pye 1 Fr.	34165
Pye 3 - 4	34166 - 67
Pye 5 Fr. , 6 Fr.	34168 - 69
Pye 7 - 8	34170 - 71
Jet 1 - 5 incl.	34172 - 76 incl.
Line 1 - 3 incl.	34177 - 79
Line 4 Fr.	34180
Shock Fr.	128708
Horse 1 Fr., 2 Fr.	128709 - 10
Regina 1 Fr.	122400
Jet 6	34202
Jet 7 Fr.	34203
Fay 1 - 2	123081 - 82
Jet 8 - 9	34204 - 05
Jet 10	34228
Jet 11 - 15 incl.	34294 - 98 incl.



LOCATION SKETCH
PYTHON NOONDAY GROUP
KAMLOOPS MINING DIVISION
BRITISH COLUMBIA

921 9W

SCALE 1:50 000

SUMMARY

The Python - Noonday property consists of some 67 located and 5 crown granted mineral claims located 10km SW of the centre of Kamloops, Kamloops Mining Division, British Columbia. The property straddles a portion of the Iron Mask Intrusive which hosts several mineralized zones such as Afton Mine and others still in the development stage. An underground development programme commenced in late 1980 was placed in abeyance due to unstable ground conditions. An extensive bulldozer and stripping programme uncovered three zones of copper mineralization that require sampling at depth by means of diamond drilling. A continuing programme of trenching, sampling and diamond drilling is recommended to evaluate mineralization occurring along the margin of the Iron Mask Batholith and apparently controlled by structural linears.

The continuing exploration programme would entail the expenditure of some \$106,800.00 for the next phase of the work.

<u>CLAIM</u>	<u>RECORD NUMBER</u>
Jet 16 Fr.	34299
Jet 17	34300
Top 1 - 2	34301 - 02
Top 3 Fr.	34303
Colt 1 - 5 Incl.	34304 - 08 Incl.
Nice 1 - 2	128699 - 700
Nancy Fr.	128701
Horse 3 Fr.	128702
Bear Fr.	128703
Hat Fr.	128704
Plane 18 Fr., 19 Fr.	128706 - 07

CROWN GRANTED CLAIMS

<u>CLAIM</u>	<u>LOT NUMBER</u>
Lost Chord	2561
Python No. 2	2562
Noonday	2563
Copperhead	2564
Python	2565

Surface rights on the Copperhead and Python Claims, Lots #2564 and 2565 are held by International Makao Limited, comprising some ninety (90) acres.

The property has been held by International Makao Ltd. (formerly Makao Development Company Ltd.) since 1955. The claims are recorded in the Mine Recorders office in Kamloops, Kamloops Mining Division, British Columbia.

LOCATION

The Python - Noonday property lies some ten kilometres WSW of the city centre of Kamloops, Kamloops Mining Division, British Columbia. The Trans Canada Highway crosses the most northerly claims in the vicinity of the Lac Le Jeune, Logan Lake turnoff. From this point ranch roads provide access to most parts of the property using conventional vehicles. Access may also be gained from the Goose Lake road and the Lac Le Jeune road.

The City of Kamloops is serviced by Pacific Western Airlines, Canadian National Railway, Canadian Pacific Railway and Trans Canada Highway. The property is crudely bisected in a N-S direction by the Trans Mountain Oil Pipeline which is in turn serviced along part of its length by a single phase B.C. Hydro line.

Kamloops offers a good source of supplies and qualified manpower for any mining operation.

TOPOGRAPHY AND VEGETATION

The surface presented by the property is that elongate rolling hills with the long axes striking NW - SE. These Roche Moutonee owe their origin to the effects of glacial surface scouring and present truncated bluffs facing SE. Elevations within the limits of the property vary from 820m to 1020m ASL. Overburden cover is extensive so that rock outcrop is limited to less than 5% of the total area. Much of the surface is open range land, supporting various grasses and sagebrush. Approximately a third of the area supports stands of sub-commercial fir, spruce and pine. Water for exploration purposes is generally available from several alkalai ponds on the property. Excellent potable water is available from an underground diamond drill hole in the Python Adit. This hole produces 5 to 10 gallons per minute and could be much improved by reaming larger than its present EX diameter.

HISTORY

Mineral exploration in the area of the Python - Noonday Property has been sporadic since prior to the turn of the century and controlled mainly by economic conditions prevailing at any particular time. Earlier efforts were directed to the search for precious metals. Placer mining was carried out all along the North and South Thompson drainage area followed by searches of the sources of values found in alluvial gravels. In later years copper exploration accelerated and in the late twenties several small operations such as Kamloops Copper commenced production.

Underground development of the Copperhead and Python areas was carried out during the early 1950's followed by underground diamond drilling. This phase of exploration extended sporadically to the present day with the resultant Python mineralized zone reported to contain 220,000 tons grading 1.11% copper and the Copperhead zone containing 115,000 tons grading 1.13% copper. Percussion and diamond drilling carried out on the Noonday zone indicated 600,000 tons grading 0.75% copper. During the drilling programme carried out by Teck Corporation in 1972 several mineralized sections were indicated in the south sector of the property adjoining the Ajax mineralized zone operated by Cominco. Insufficient drilling was carried out to delineate the zone for evaluation. To the NE a mineralized zone containing native copper was uncovered during construction excavation, however this occurrence has never been evaluated.

Recently extensive surface copper mineralization has been noted during stripping operations along the NE margin of the Cub 3 claim.

The Iron Mask Batholith is a linear structure hosting several zones of copper mineralization, such as the Sugarloaf, Kamloops Copper, and Afton, the latter now in production at a rate in excess of 10,000 tons per day.

GEOLOGY

The Python - Noonday Property overlies a portion of the linear intrusive mass locally termed the Iron Mask Intrusive. This member of the Coast Intrusive Series is Cretaceous in age and generally strikes NW - SE. The mass intruded Nicola Volcanics consisting of greenstones, andesites and basalts, with minor intercalated argillites, limestones and conglomerates. The intrusive mass to the north may be overlain by Kamloops Series consisting of rhyolite, andesite, basalt and associated pyroclastics and agglomerates.

The Iron Mask Intrusive is made up of diorite, syenite and monzonite. Making forceful entry along and within the margins of the Iron Mask Intrusive occurs a facies locally termed picrite basalt. This peridotite is thought to be an ultra basic late stage segregation of the parent magma and made entry through the core of the earlier acidic intrusive. Large masses of diorite have been observed to be completely enclosed by the peridotite, indicating earlier emplacement and solidification of the diorite.

Marginal to the north limit of the Iron Mask Batholith occur two younger dioritic facies, namely the Sugarloaf Intrusive and the Cherry Creek Intrusive. The Sugarloaf Intrusive is represented by a typical micro-porphyrific diorite while the Cherry Creek Intrusive is usually a fresh looking micro-diorite frequently accompanied by a secondary salmon pink feldspar.

The main structural lineation present is a series of shears and joints parallel to the long axis of the Iron Mask Intrusive striking WNW. A secondary set of joints striking 060° is quite common particularly along the north margin of the Iron Mask Batholith and frequently displaces the trace of the diorite - volcanics contact. It would appear that the above two rupture lineations have had much to do with control of mineralization in the area and the creation of an environment suitable for the deposition of mineralization.

MINERALIZATION

Mineralization occurs at several locations on the property and in several modes. The near surface expressions of copper mineralization take the form of malachite and azurite with chalcopyrite occurring at depth. The chalcopyrite occurs as micro-fracture fillings, as the ground mass in breccias and as massive lenses up to several inches in thickness. Copper has also been observed to occur as native copper, bornite and chalcocite, however only in amounts sufficient for identification. Sporadically minor amounts of molybdenum disulphide have been observed. Pyrite and magnetite are ubiquitous in greater and lesser amounts. Gold, though never observed, has been noted in chemical analyses especially in the presence of chalcopyrite.

Structural control of the mineralization within the north sector of the property has been studied at length recently and it would appear two linears are coincident with the majority of mineralization observed. The jointing and shearing parallel to the axis of the Iron Mask Intrusive, especially along the north margin are coincident with lenticular mineralization such as the Copperhead zone.

A set of joints striking 060° with near vertical dips along the NE margin of the Intrusive mass may host copper mineralization associated with either lenses of magnetite or with fault breccias cemented by introduced potassium feldspar. Such an occurrence is observed in a recent exposure immediately to the NW of the O.K. Shaft and in the area of the Orphan Boy Shaft.

The locus of the two better lineations may contribute to an environment suitable for the deposition of mineralization. The Python breccia zone exposed in the Python crosscuts comprises a breccia "pipe" with the ground mass consisting of typical salmon pink feldspar carrying blebs and knots of massive chalcopyrite.

WORK PROGRAMME

During the month of October, 1980, a percussion drilling programme was commenced in an effort to confirm the continuity of the Python breccia zone extending from surface to below the main level. Severe weather precluded completion of the programme, however several mineralized sections confirmed the presence of the structure in its projected position. Completion of the programme will facilitate completion of a raise to sample the mineralized zone from the main level to surface.

Rehabilitation of the Nelson Adit near the NW corner of the Copperhead Claim commenced in mid August, 1980. The purpose of this underground development was to intersect the mineralization of the Python breccia at a horizon 300' below the main level. Trackless methods were adapted and the operation was carefully monitored to fulfill Government regulation and good mining practice with regard to safety and ventilation. At a point some 90m from the portal highly sheared and altered peridotite was encountered. Severe caving was experienced and in spite of various stabilization efforts the slide area could not be penetrated with a sufficient degree of safety. The project was placed in abeyance.

Some 290 hours of bulldozer stripping was carried out using a DHE Cat with hydraulically controlled twin rippers. Trenching was carried out along the diorite - peridotite contact extending from the east margin of the Copperhead claim to the north margin of the Cub 3 claim. Some 3km of open cut, some 85% in bedrock exposed mineralization not previously observed and extended zones of mineralization already known. Overburden proved to be highly variable in depth and areas where bedrock was not reasonably attainable were simply passed over.

DISCUSSION

Penetration of the Noonday and Python mineralization zones at a horizon below the main level by means of a horizontal drift has proven to be less than practical due to conditions imposed by local topography and adverse rock mechanics. These horizons will require access by means of an incline, shaft or winze from a point horizontally closer to the target area. That decision is contingent upon other developments on the property.

A significant development was uncovered during the bulldozer stripping programme. Some 50m to the NW of the O.K. Shaft a system of three veins was uncovered in sections varying in width from .6m to 2m over a distance of 35m. Those veins strike from 060° to 067° and dip steeply to the southeast. Mineralization consists of chalcopyrite associated with magnetite and with minor chalcocite. Sampling of these veins yielded the following values:

West Vein - .6m channel	2.10% Cu	.047 ozs Au
Mid Vein - 1m channel	1.87% Cu	.012 ozs Au
East Vein - 2m channel	0.77% Cu	.010 ozs Au

It remains to sample this mineralized zone at depth by means of diamond drilling.

In the area of the Orphan Boy shaft stripping revealed a similar set of veins though of smaller dimensions and lesser tenor. Chalcopyrite carried in potassic feldspar over a section length of sixty feet yielded a composite value of 0.46% copper. This area should be sectioned at depth by at least diamond drilling.

Stripping carried out from point 120m north of the Python shaft to the east margin of the Python claim revealed several linears containing copper mineralization and sampling in section yielded low order values. Additional stripping is in order to further evaluate the observed mineralization.

No work was carried out in the south sector of the property marginal to the Ajax property held by Cominco Ltd. Percussion drilling carried out by

Cominco in immediate proximity to the common boundary on the Sultan and Monte Carlo claims is reported to have yielded sections with nominal copper values. Work is continuing.

CONCLUSIONS AND RECOMMENDATIONS

The bulldozer stripping programme carried out over the northern sector of the Python - Noonday property revealed three zones of cupriferous mineralization that require sampling at depth by means of diamond drilling. It would appear that currently known and observed mineralization in the north sector of the property is structurally controlled in that each occurrence is oriented in a consistent direction. This consistency of orientation suggests a degree of predictability of occurrence that should be brought to bear on the direction of future exploration activity.

In view of the success of the stripping programme it is recommended that it be continued and expanded in both a NW and SE direction. This would give a continuous bedrock exposure, overburden permitting, from the Nancy Fraction to the Lost Chord Claim.

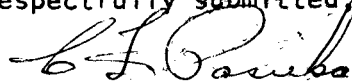
During the course of the diamond drilling programme it would be judicious to ream out the water making hole in the Python adit to ensure a reliable source of water for exploration and mining purposes.

Estimated costs for the continuing exploration programme are presented as follows:

PHASE 1

1. Diamond drilling - 2000' BQ Wireline core @ \$27/ft.	\$ 54,000.00
2. Bulldozer stripping - 200 hrs D8E with ripper @ \$115/hr.	23,000.00
3. Sampling and Assaying	4,000.00
4. Consulting and supervision	8,000.00
5. Contingency @ 20%	<u>17,800.00</u>
Total	<u>\$106,800.00</u>

Respectfully submitted,



-10-

C. J. Pasieka P.Eng.

BOX 175, MAIN POSTAL STATION


KAMLOOPS, B.C. V2C 5K6

CERTIFICATION

I, Clemens Terence Pasieka, of the City of Kamloops, Province of British Columbia, hereby certify:

1. That I am a geologist and reside at 290 Cypress Ave. Kamloops, B.C.
2. That I am a graduate of University College, Dublin, B.Sc. 1963.
3. That I have been practicing my profession as a geologist for eighteen years.
4. That I am a member of the Associations of Professional Engineers of the Provinces of Alberta, Saskatchewan, and British Columbia.
5. That I have no interest directly or indirectly in the property or the securities of International Makao Ltd., nor do I expect to receive any such interest in the property or securities of International Makao Ltd.
6. That this report is based on data derived from work carried out under my supervision on the property, from personal experience in the area, and from relevant Government and private publications.

Dated this 16th day of August, 1981, City of Kamloops, Province of British Columbia.

 *C. T. Pasieka*
C. T. Pasieka P. Eng.

BIBLIOGRAPHY


1. P. Badgely - Report - 1956.
2. A. P. Fawley - Report - October 1, 1963, July 9, 1968.
3. W. I. Nelson - Report - November 1, 1962.
4. G. Webster - Report _ September 2, 1956.
5. B.C. Dept. of Mines - Report - 1956.
6. R. H. Seraphim - Report - May 1, 1972.
7. C. T. Pasieka - Report - March 22, 1977.
8. C. T. Pasieka - Report - July 13, 1978.

CERTIFICATE OF COSTS

I, hereby certify that the following costs were incurred by, invoiced to and paid for by International Makao Ltd. during the course of an exploration programme carried out on the Python Noonday Group of claims, Kamloops Mining Division, British Columbia.

Percussion Drilling 1890'	\$11,340.00
Bulldozer Trenching	\$28,260.00
Mobilization	\$ 1,000.00
Adit 90m X 3.5m @\$60./m.3	\$56,700.00
Assays 182 @\$6.00	\$ 1,080.00
	<u>\$98,380.00</u>

Signed this 16th day of August, 1981 in Kamloops, British Columbia.


C.T. PASIEKA



C. T. Pasieka P.Eng.

BOX 175, MAIN POSTAL STATION

KAMLOOPS, B.C. V2C 5K6

LIST OF PERSONELL

<u>NAME</u>	<u>ADDRESS</u>	<u>POSITION</u>	<u>RATE</u>	<u>TERM</u>
John Evans	Lillooet, B.C.	Cat Shinner	Contract	Aug 20 - Sept 12 /81
Gary Grove	Kamloops, B.C.	Miner	\$12.50/Hr.	Nov 18 - Mar 15 /81
Al Millar	Kamloops, B.C.	Driller	Contract	Oct 20 - 29 incl. /81
George Millar	Kamloops, B.C.	Driller	Contract	Oct 20 - 29 incl. /81
Carl Baur	Kamloops, B.C.	Miner	\$13.37/Hr.+Bonus	Nov 12 - Mar 15 /81
Larry Baur	Kamloops, B.C.	Miner	\$13.37/Hr.+Bonus	Nov 12 - Mar 15 /81
R. McLaren	Kamloops, B.C.	Miner	\$12.50/Hr.	Feb 15 - Mar 15 /81
R.H. McLaren	Kamloops, B.C.	Miner	\$12.50/Hr.	Feb 15 - Mar 15 /81
Dave Orr	Kamloops, B.C.	Mine Mechanic	\$12.50/Hr.	Dec 10 - Feb 30 /81
C.T. Pasieka	Kamloops, B.C.	Geologist	\$200/Day	Aug 12 - Mar 30 /81

Signed this 16th day of August, 1981 in Kamloops, British Columbia.



C.T. PASIEKA



KAMLOOPS RESEARCH & ASSAY LABORATORY LTD.

3095 WEST TRANS CANADA HIGHWAY — KAMLOOPS B.C.

V1S 1A7

PHONE (604) 372-2784 — TELEX 048-8320

CERTIFICATE OF ASSAY

**B.C. LICENSED ASSAYERS
GEOCHEMICAL ANALYSTS
METALLURGISTS**

TO Mr. C. T. Pasioka
P. O. Box 175
Kamloops, B.C.

Certificate No. 4-3-33

Date December 11, 1980

I hereby certify that the following are the results of assays made by us upon the herein described _____ samples

Kral No	Marked	GOLD	SILVER	Cu	Percent	Percent	Percent	Percent	Percent	Percent
		Ounces Per Ton	Ounces Per Ton	Percent	Percent	Percent	Percent	Percent	Percent	Percent
	<i>PH 1</i>									
1	0 - 20	.004		.17						APPENDIX
2	20 - 30		.25							
3	30 - 40		.17							
4	40 - 50		.07							
5	50 - 60		.08							
6	60 - 70		.14							
7	70 - 80		.12							
8	80 - 90		.07							
9	90 - 100		.05							
10	100 - 110		.04							
11	110 - 120	.004		.02						
12	120 - 130		.01							
13	130 - 140		.01							
14	140 - 150		.01							
15	150 - 160		.01							
16	160 - 170		.03							
17	170 - 180		.05							
18	180 - 190		.20							
19	190 - 200		.06							
20	200 - 210		.05							

NOTE:
Rejects retained three weeks.
Pulps retained three months
unless otherwise arranged.



KAMLOOPS RESEARCH & ASSAY LABORATORY LTD.

2095 WEST TRANS CANADA HIGHWAY — KAMLOOPS B.C.

V1S 1A7

PHONE: (604) 372-2784 — TELEX: 048-8320

CERTIFICATE OF ASSAY

**B.C. LICENSED ASSAYERS
GEOCHEMICAL ANALYSTS
METALLURGISTS 2**

TO Mr. C. T. Pasioka

Certificate No. K-3-83

Date December 11, 1980

I hereby certify that the following are the results of assays made by us upon the herein described _____ samples

Kral No	Marked	GOLD	SILVER	Cu						
		Ounces Per Ton	Ounces Per Ton	Percent	Percent	Percent	Percent	Percent	Percent	Percent
21	210 - 220			.06						
22	220 - 230	.005		.28						
23	230 - 240	.004		.26						
24	240 - 250	.005		.24						
25	250 - 260	.006		.27						
26	260 - 270	.005		.33						
27	270 - 280			.13						
28	280 - 290			.08						
29	290 - 300			.07						

NOTE:
Rejects retained three weeks.
Pulps retained three months
unless otherwise arranged.



KAMLOOPS RESEARCH & ASSAY LABORATORY LTD.

2095 WEST TRANS CANADA HIGHWAY — KAMLOOPS B.C.
V1S 1A7

PHONE (604) 372-2734 — TELEX 246-8320

CERTIFICATE OF ASSAY

B.C. LICENSED ASSAYERS
GEOCHEMICAL ANALYSTS
METALLURGISTS

TO Mr. C. T. Pasieka
P.O. Box 175
Kamloops, B.C.

Certificate No. 4-14-84
Date December 19, 1984

I hereby certify that the following are the results of assays made on the herein described _____ samples

Sample No	Mark	GOLD		SILVER		Cu					
		Ounces Per Ton		Ounces Per Ton		Percent	Percent				
1	#2 5 - 20	.009				.70					
2	20 - 30	.008				1.31					
3	30 - 40	.004				.29					
4	40 - 50	.029				.30					
5	50 - 60	.003				.22					
6	60 - 70	.004				.22					
7	70 - 80	.005				.28					
8	80 - 90	.002				.19					
9	90 - 100	.003				.24					
10	100 - 110	-				.16					
11	110 - 120	-				.09					
12	120 - 130	.007				.30					
13	130 - 140	-				.12					
14	140 - 150	.001				.19					
15	150 - 160	-				.12					
16	160 - 170	.002				.29					
17	170 - 180	.002				.26					
18	180 - 190	.003				.19					
19	190 - 200	.002				.27					
20	200 - 210	.004				.38					

NOTE:
Rejects retained three weeks.
Pulps retained three months
unless otherwise arranged.



KAMLOOPS RESEARCH & ASSAY LABORATORY LTD.

2095 WEST TRANS CANADA HIGHWAY — KAMLOOPS B.C.
V1S 1A7

PHONE: (604) 372-2754 — TELEX 048-8320

CERTIFICATE OF ASSAY

**B.C. LICENSED ASSAYERS
GEOCHEMICAL ANALYSTS
METALLURGISTS 2**

TO Mr. C. T. Pasioka

Certificate No. K-3491

Date December 19, 1960

I hereby certify that the following are the results of assays made by us upon the herein described _____ samples

Sample No.	Marked	GOLD		SILVER		Cu		Percent	Percent	Percent	Percent	Percent	Percent
		Ounces Per Ton	Ounces Per Ton	Ounces Per Ton	Ounces Per Ton	Percent	Percent						
21	#2 210 - 220	.004				.43							
22	220 - 230	.008				.64							
23	230 - 240	.005				.42							
24	250 - 260	-				.08							
25	260 - 270	-				.13							
26	270 - 280	-				.15							
27	280 - 290	-				.13							
28	290 - 300	.007				.86							
29	#3 0 - 20	-				.03							
30	20 - 30	-				.63							
31	30 - 40	-				.03							
32	40 - 50	-				.06							
33	50 - 60	.004				.20							
34	60 - 70	-				.15							
35	70 - 80	-				.16							
36	80 - 90	-				.08							
37	90 - 100	-				.05							
38	100 - 110	-				.05							
39	110 - 120	.004				.31							
40	120 - 130	-				.08							

NOTE:
Rejects retained three weeks.
Pulps retained three months
unless otherwise arranged.



KAMLOOPS RESEARCH & ASSAY LABORATORY LTD.

2095 WEST TRANS CANADA HIGHWAY — KAMLOOPS B.C.
V1S 1A7

PHONE (604) 372-2794 — TELEX 048 8320

CERTIFICATE OF ASSAY

**B.C. LICENSED ASSAYERS
GEOCHEMICAL ANALYSTS
METALLURGISTS 3**

TO Mr. C. T. Pasioka

Certificate No. K-3494

Date December 19, 1980

I hereby certify that the following are the results of assays made by us upon the herein described _____ samples

Kral No	Marked	GOLD	SILVER	Cu						
		Ounces Per Ton	Ounces Per Ton	Percent	Percent	Percent	Percent	Percent	Percent	Percent
41	#3 130 - 140	-		.16						
42	140 - 150	.002		.26						
43	#5 0 - 20	-		.04						
44	20 - 30	-		.10						
45	30 - 40	-		.14						
46	40 - 50	-		.09						
47	50 - 60	.003		.22						
48	60 - 70	.006		.41						
49	70 - 80	.003		.19						
50	80 - 90	.007		.41						
51	90 - 100	-		.18						
52	100 - 110	.007		.30						
53	110 - 120	.003		.21						
54	120 - 130	.001		.21						
55	130 - 140	.002		.31						
56	140 - 150	-		.17						
57	150 - 160	-		.11						
58	160 - 170	.002		.32						
59	170 - 180	-		.12						
60	180 - 190	-		.13						

NOTE:
Rejects retained three weeks.
Pulps retained three months
unless otherwise arranged.



KAMLOOPS RESEARCH & ASSAY LABORATORY LTD.

2095 WEST TRANS CANADA HIGHWAY — KAMLOOPS B.C.
V1S 1A7

PHONE: (604) 372-2734 — TELEX: 048-8320

CERTIFICATE OF ASSAY

B.C. LICENSED ASSAYERS
GEOCHEMICAL ANALYSTS
METALLURGISTS

TO Mr. C. T. Pasieka
P.O. Box 175
Kamloops, B.C.

Certificate No. K-3508

Date December 23, 1980

I hereby certify that the following are the results of assays made by us upon the herein described _____ samples

Kra: No	Marked	GOLD	SILVER	Cu						
		Ounces Per Ton	Ounces Per Ton	Percent	Percent	Percent	Percent	Percent	Percent	Percent
1	#6 0 - 20			.08						
2	20 - 30			.12						
3	30 - 40			.03						
4	40 - 50			.04						
5	50 - 60			.19						
6	60 - 70			.04						
7	70 - 80			.03						
8	80 - 90			.18						
9	90 - 100			.03						
10	100 - 110			.03						
11	110 - 120			.03						
12	120 - 130			.04						
13	130 - 140			.03						
14	140 - 150			.03						
15	150 - 160			.02						
16	160 - 170			.03						
17	170 - 180			.02						
18	180 - 190			.02						
19	190 - 200			.05						
20	200 - 210			.05						

NOTE:
Rejects retained three weeks.
Pulps retained three months
unless otherwise arranged.



KAMLOOPS RESEARCH & ASSAY LABORATORY LTD.

2095 WEST TRANS CANADA HIGHWAY — KAMLOOPS B.C.
V1S 1A7

PHONE: (604) 372-2734 — TELEX: 048-8320

CERTIFICATE OF ASSAY

B.C. LICENSED ASSAYERS
GEOCHEMICAL ANALYSTS
METALLURGISTS 2

TO Mr. C. T. Pasieka

Certificate No. K-3508

Date December 23, 1980

I hereby certify that the following are the results of assays made by us upon the herein described _____ samples

Karat No.	Marked	GOLD	SILVER	Cu						
		Ounces Per Ton	Ounces Per Ton	Percent	Percent	Percent	Percent	Percent	Percent	Percent
21	#6 210 - 220			.08						
22	220 - 230			.13						
23	230 - 240			.07						
24	240 - 250			.04						
25	250 - 260			.05						
26	260 - 270			.04						
27	270 - 280			.04						
28	280 - 290	.004		.30						
29	290 - 300	.005		.22						

NOTE:
Rejects retained three weeks.
Pulps retained three months
unless otherwise arranged.



KAMLOOPS RESEARCH ASSAY LABORATORY LTD.

2095 WEST TRANS CANADA HIGHWAY — KAMLOOPS B.C.

V1S 1A7

PHONE: (604) 372-2784 — TELEX: 248-8320

CERTIFICATE OF ASSAY

**B.C. LICENSED ASSAYERS
GEOCHEMICAL ANALYSTS
METALLURGISTS**

TO Mr. C. T. Pasieka
P.O. Box 175
Kamloops, B.C.

Certificate No. K-1803

Date December 22, 1980

I hereby certify that the following are the results of assays made by us upon the herein described _____ samples

Sample No	Marked	GOLD		SILVER	Cu						
		Ounces Per Ton	Ounces Per Ton	Ounces Per Ton	Percent	Percent	Percent	Percent	Percent	Percent	Percent
1	#7 0 - 20				.02						
2	20 - 30				.02						
3	30 - 40				.03						
4	40 - 50				.01						
5	50 - 60				.05						
6	60 - 70				.09						
7	70 - 80				.02						
8	80 - 90				.02						
9	90 - 100				.04						
10	100 - 110				.02						
	110 - 120										
11	120 - 130				.01						
12	130 - 140				.03						
13	140 - 150				.05						
14	150 - 160				.05						
15	160 - 170				.05						
16	170 - 180				.04						
17	180 - 190				.02						
18	190 - 200				.02						
19	200 - 210				.02						
20	210 - 220				.02						

NOTE:
Rejects retained three weeks.
Pulps retained three months
unless otherwise arranged.



KAMLOOPS RESEARCH & ASSAY LABORATORY LTD.

2095 WEST TRANS CANADA HIGHWAY — KAMLOOPS B.C.
V1S 1A7

PHONE 804-372-2794 — TELEX 048-8320

CERTIFICATE OF ASSAY

**B.C. LICENSED ASSAYERS
GEOCHEMICAL ANALYSTS
METALLURGISTS 2**

TO Mr. C. T. Pasieka

Certificate No. K-1503

Date December 22, 1960

I hereby certify that the following are the results of assays made by us upon the herein described _____ samples

Ass. No	Marked	GOLD	SILVER	Cu						
		Ounces Per Ton	Ounces Per Ton	Percent	Percent	Percent	Percent	Percent	Percent	Percent
21	#7 220 - 230			.03						
22	230 - 240			.01						
23	240 - 250			.01						
24	250 - 260			.02						
25	260 - 270			.09						
26	270 - 280			.05						
27	280 - 290			.04						
28	290 - 300			.03						
29	#8 0 - 20			.02						
30	20 - 30			.17						
31	30 - 40			.11						
32	40 - 50			.02						
33	50 - 60 A			.11						
34	50 - 60 B	.003		.31						
35	60 - 70	.002		.27						
36	70 - 80			.11						
37	80 - 90			.02						
38	90 - 100			.02						
39	100 - 110			.02						
40	110 - 120			.07						

NOTE:
Rejects retained three weeks.
Pulps retained three months
unless otherwise arranged.



KAMLOOPS RESEARCH & ASSAY LABORATORY LTD.

2095 WEST TRANS CANADA HIGHWAY — KAMLOOPS B.C.
V1S 1A7

PHONE: (604) 372-2794 — TELEX: 048-8320

CERTIFICATE OF ASSAY

**B.C. LICENSED ASSAYERS
GEOCHEMICAL ANALYSTS
METALLURGISTS** 3

TO Mr. C. T. Pasieka

Certificate No. K-3503

Date December 22, 1980

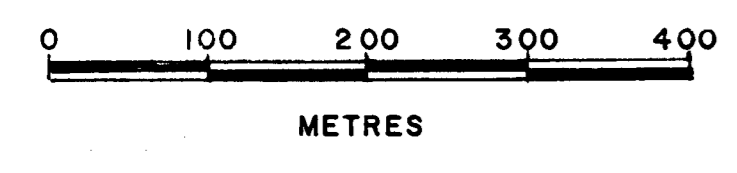
I hereby certify that the following are the results of assays made by us on the herein described _____ samples

Kra No	Marked	GOLD		SILVER		Cu					
		Ounces Per Ton	Ounces Per Ton	Ounces Per Ton	Ounces Per Ton	Percent	Percent	Percent	Percent	Percent	Percent
41	120 - 130					.03					
42	130 - 140					.04					
43	140 - 150					.03					
44	150 - 160					.12					
45	160 - 170					.08					
46	170 - 180					.06					
47	180 - 190					.04					
48	190 - 200					.02					
49	200 - 210					.02					
50	210 - 220					.02					
51	220 - 230					.01					
52	230 - 240					.01					
53	240 - 250					.01					
54	250 - 260					.01					
55	260 - 270					.02					
56	270 - 280					.02					
57	280 - 290					.02					
58	290 - 300					.01					

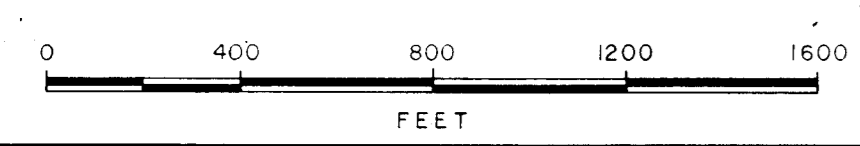
NOTE:
Rejects retained three weeks
Pulps retained three months
unless otherwise arranged.

(MFTON GRID) 98,000 E

112,000 N



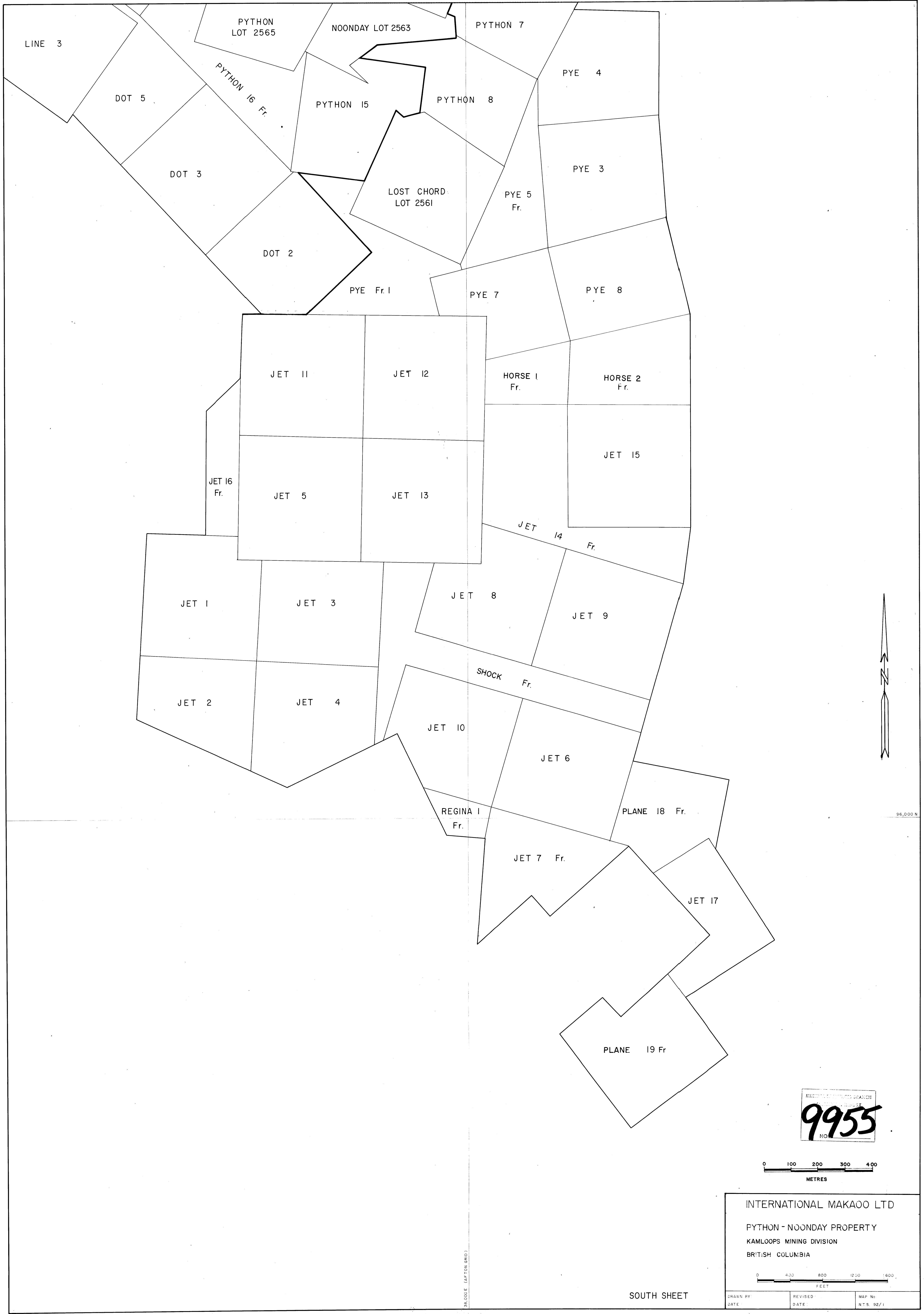
INTERNATIONAL MAKAOO LTD
 PYTHON - NOONDAY PROPERTY
 KAMLOOPS MINING DIVISION
 BRITISH COLUMBIA



MINERAL RESOURCES BRANCH
 9955

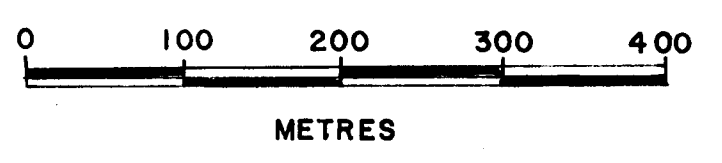
NORTH SHEET

DRAWN BY:	REVISED:	MAP NO:
DATE:	DATE:	NTS 92/1



96,000 N.

MINISTRY OF LANDS AND FORESTRY
 9955
 NO.



INTERNATIONAL MAKAOO LTD
 PYTHON - NOONDAY PROPERTY
 KAMLOOPS MINING DIVISION
 BRITISH COLUMBIA

DRAWN BY	REVISED	MAP No
DATE	DATE	N.T.S. 92/1

SOUTH SHEET

38,000 E (4 FT ON GRID)