

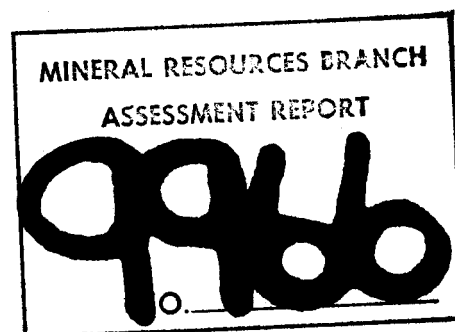
81-1187-9966,

GEOCHEMISTRY REPORT  
ON THE  
CORNER CLAIM [20 UNITS]  
Lat.  $53^{\circ}32.5'N$  Long.  $132^{\circ}12'W$   
NTS 103F/9E  
QUEEN CHARLOTTE ISLANDS, B. C.  
SKEENA M. D.

for  
KNOBBY LAKE MINES LTD.  
Vancouver, B.C.

by  
A.F. ROBERTS, P. ENG.

June 25, 1980



A. F. ROBERTS, P.ENG.  
CONSULTING MINING ENGINEER

## TABLE OF CONTENTS

	<u>Page</u>
SUMMARY	
INTRODUCTION.....	1
LOCATION, ACCESS, TOPOGRAPHY.....	1
CLAIM.....	2
GENERAL GEOLOGY.....	3
GEOCHEMISTRY.....	4
CONCLUSIONS.....	7
RECOMMENDATIONS.....	7
ESTIMATE OF COSTS.....	8
CERTIFICATE.....	10
STATEMENT OF ASSESSMENT COSTS.....	[End of Report]

### MAPS

#### Ref. No.

- 1] Location Map: B.C. Road Map,  
1 cm = 24 km.....[Frontispiece]
- 2] Topographic Map: NTS 103F/8E, 9E,  
1:50,000.....[Follows page 1]
- 3] Access Roads: MacMillan-Bloedel  
7/16" = 1 mile.....[Follows page 2]
- 4] Claim Map: B.C. Department of Mines  
1:50,000.....[Follows page 3]
- 5] Geology Map: B.C. Department of Mines  
Bulletin 54, 1:125,000.....[Follows page 4]
- 9] Geochemistry Map: Gold-Mercury  
Gold-Arsenic.....[Back Pocket]

### APPENDICES

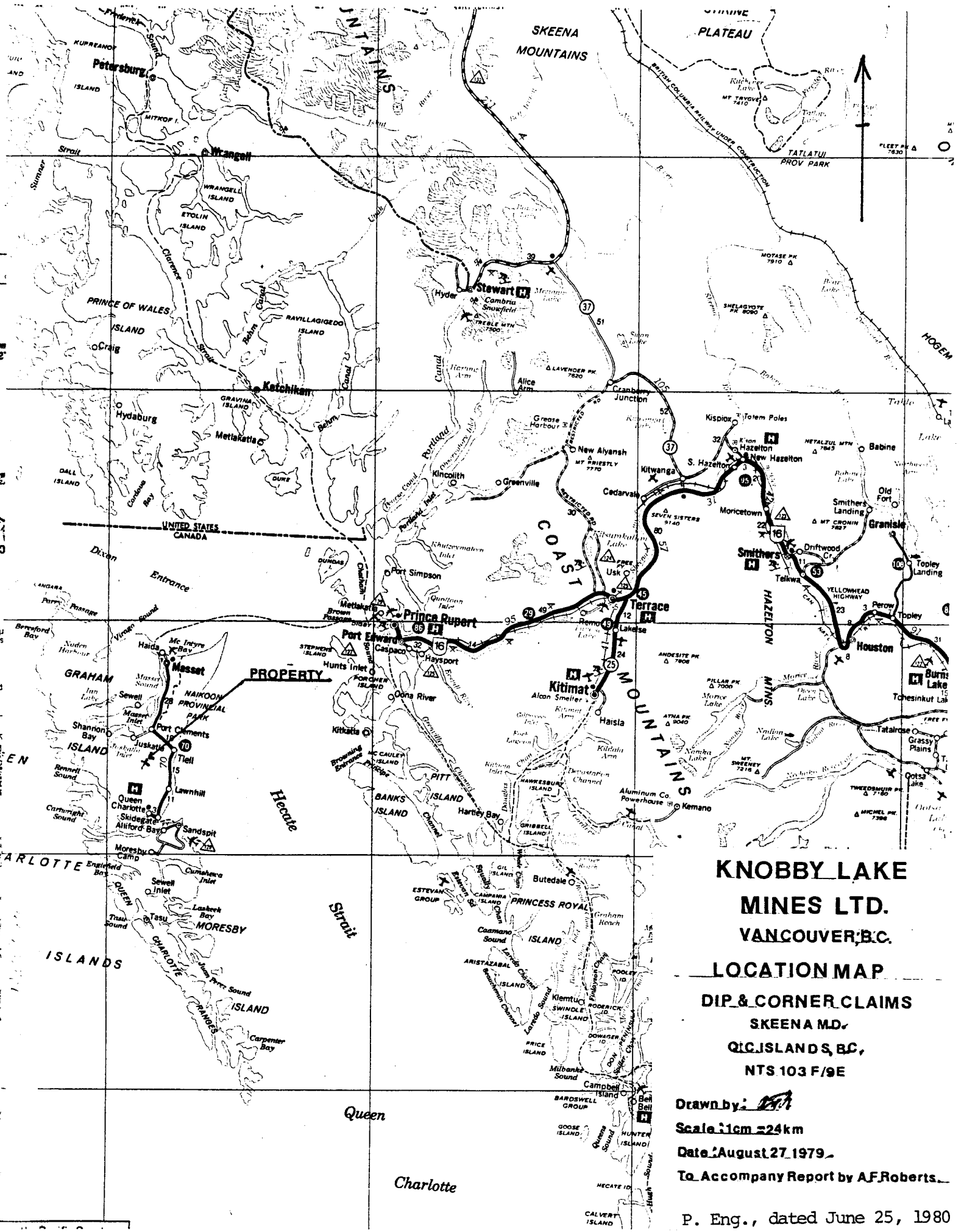
- 10] Appendix A - Assay Certificates  
and Procedures.....[End of Report]
- 11] Appendix B - Frequency and Probability  
Curves - Arsenic, Mercury....[End of Report]

TABLE OF CONTENTS [Cont'd]

REFERENCES

Ref. No.

- 6] B.C. Department of Mines & Petroleum Resources,  
Bulletin 54: Geology of the Queen Charlotte  
Islands, B.C., A. Sutherland Brown, 1968
- 7] B.C. Department of Mines & Petroleum Resources,  
Babe Gold Prospect, Queen Charlotte Islands, B.C.,  
by A. Sutherland Brown, T.G. Schroeter, 1977
- 8] Reports by A.F. Roberts, P.Eng., for Consolidated  
Cinola, with Drill Logs, 1977-1979. Qualifying  
and Geochemistry Reports for other companies,  
1979 to date.
- 12] GSC Bulletin 280, The Geochemistry of Gold and Its  
Deposits, R.W. Boyle, 1979
- 13] Economic Geology, Vol. 64, 1969. A Simplified  
Statistical Treatment of Geochemical Data by  
Graphical Representation, Claude Lepeltier



**KNOBBY LAKE  
MINES LTD.  
VANCOUVER, B.C.**

**LOCATION MAP  
DIP & CORNER CLAIMS  
SKEENA MD,  
QIC ISLANDS, B.C.,  
NTS 103 F/9E**

Drawn by: *AF*  
Scale: 1cm = 24km  
Date: August 27, 1979  
To accompany Report by AF Roberts

P. Eng., dated June 25, 1980

## S U M M A R Y

The Corner Claim has shown geochemical anomalies, some coincident, for gold, arsenic, mercury.

The anomalies, from soil sampling on rather wide intervals, are strong, and of a large enough size, to cover an open pit size orebody.

The property is deserving of further work to pinpoint drill targets.

Therefore, it is recommended that the Company undertake a VLF-EM survey using a Sabre Model 27 instrument, on a 100 metre by 25 metre grid, to include geological mapping of any outcrops located, if they exist.

This Phase I program is estimated to cost \$26,000.

Phase II, will consist of road building, and trenching, if it is feasible. Phase II is estimated at \$46,000.

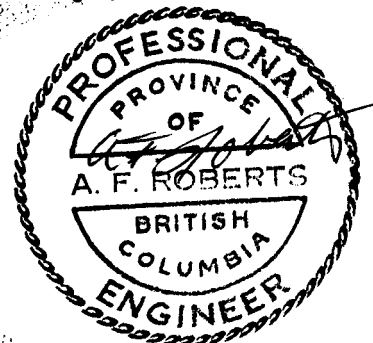
Phase III, Diamond Drilling, may be advanced into Phase II, if trenching is not feasible. 1,000 metres of diamond drilling, with associated costs, is estimated at \$128,000.

Respectfully submitted,



A. F. Roberts, P. Eng.,  
June 25, 1980

**A. F. ROBERTS, P. ENG.**  
CONSULTING MINING ENGINEER



GEOCHEMISTRY REPORT  
ON THE  
CORNER CLAIM [20 UNITS]  
Lat.  $53^{\circ}32.5'N$  Long.  $132^{\circ}12'W$   
NTS 103F/9E  
QUEEN CHARLOTTE ISLANDS, B. C.  
SKEENA M. D.  
for  
KNOBBY LAKE MINES LTD.  
Vancouver, B.C.  
by  
A.F. ROBERTS, P.ENG.  
June 25, 1980

INTRODUCTION

This report was authorized by the Directors of the Company.

Its purpose is to analyze the results of the recently completed soil sampling program over the Corner Claim.

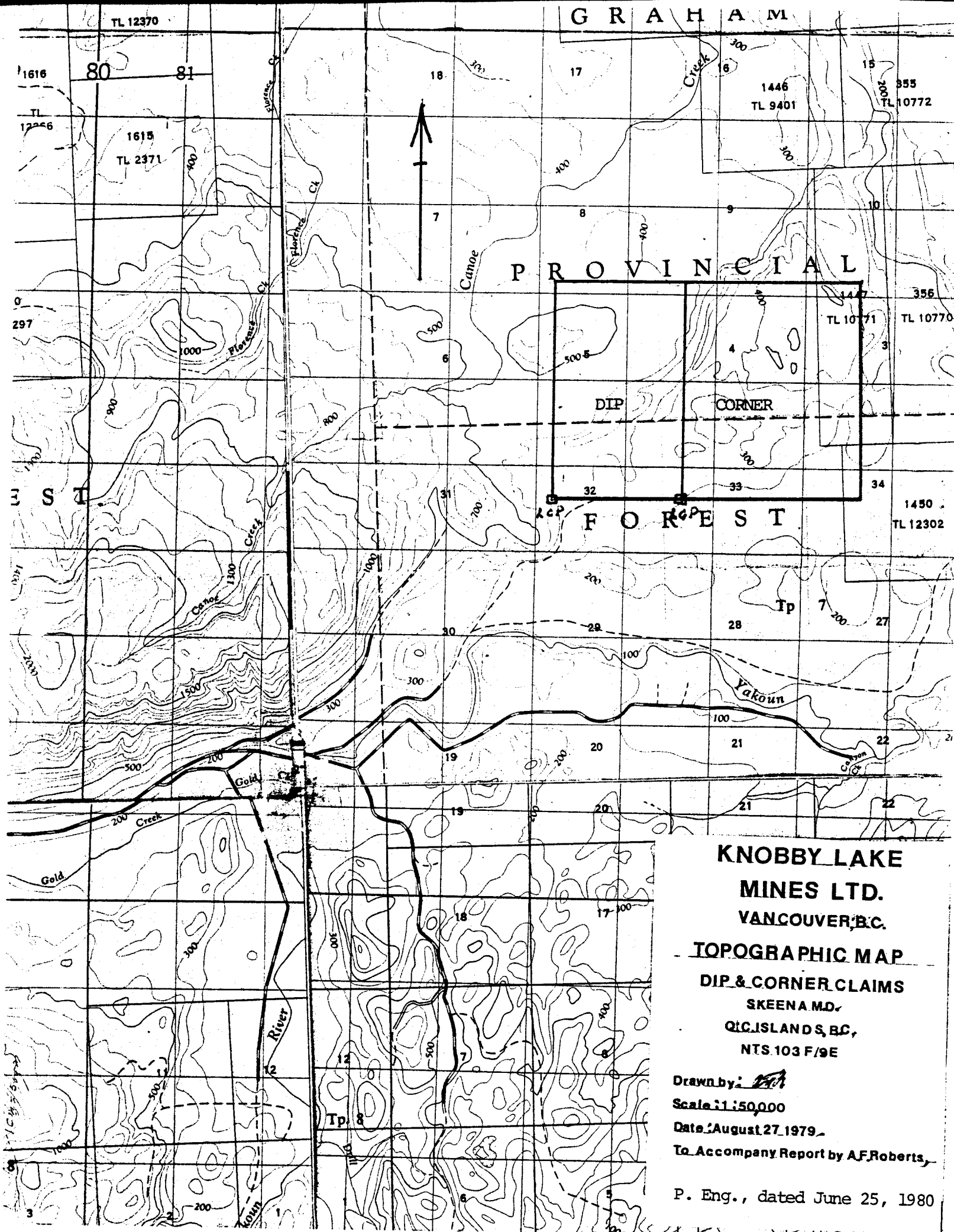
The soil samples were taken in the period May 1 to May 22, 1980 by Team Mineral Services Inc. of Delta, B.C.

If justified by the analysis, recommendations for further work on the property are to be made.

LOCATION, ACCESS, TOPOGRAPHY 1] 2] 3]

The Islands are serviced by P.W. Airlines from Vancouver to Sandspit. Alternatively, there is a ferry-barge

- 
- 1] Location Map: B.C. Road Map  
1 cm = 24 km [Frontispiece]
- 2] Topographic Map: NTS 103F/9E, 9W  
1:50,000 [Follows page 1]
- 3] Access Roads: MacMillan-Bloedel,  
7/16" = 1 mile [Follows page 2]



G R A H A M

P R O V I N C I A L

DIP CORNER

F O R E S T

**KNOBBY LAKE  
MINES LTD.  
VANCOUVER, B.C.**

**TOPOGRAPHIC MAP  
DIP & CORNER CLAIMS  
SKEENA M.D.,  
Q.I.C. ISLANDS, B.C.,  
NTS. 103 F/9E**

Drawn by: *AFR*  
Scale: 1:50,000  
Date: August 27, 1979  
To accompany Report by A.F. Roberts,

P. Eng., dated June 25, 1980

service from Prince Rupert to Masset on the north end of Graham Island.

Roads within the Island are good. The MacMillan-Bloedel roads are good gravel. Permission to use them during working hours must be obtained from MacMillan-Bloedel offices in Juskatla or Queen Charlotte City.

The property lies about 25 km south of Juskatla, and approximately the same distance north of Queen Charlotte City by logging roads.

Branch roads Nos. 45 and 40a reach the southern boundary of the claims. There are no internal roads.

The claim is covered by slash, second growth, and a little virgin timber on its northern boundary.

Elevations are from 60 metres to 200 metres, ASL.

There is sufficient water for camps, and diamond drilling, although creeks and ponds may go dry in the summer.

Precipitation is estimated at an average of 140 cm per annum. Some of this may be snow in the winter.

CLAIM 4]

This claim is described as follows:

<u>Name</u>	<u>Units</u>	<u>Record No.</u>	<u>Expiry Date</u>
Corner	20	896	June 13, 1980

4] Claim Map: B.C. Department of Mines  
& Petroleum Resources, 103F/9E,  
1:50,000

[Follows page 3]





Assessment work has been filed, and this report is part of the assessment work claim. Therefore, the claims are in good standing until at least June 12, 1981.

The Legal Corner Post and other posts examined conformed to the requirements of the Mining Act.

The exact location and the actual amount of ground covered can only be determined by a legal survey.

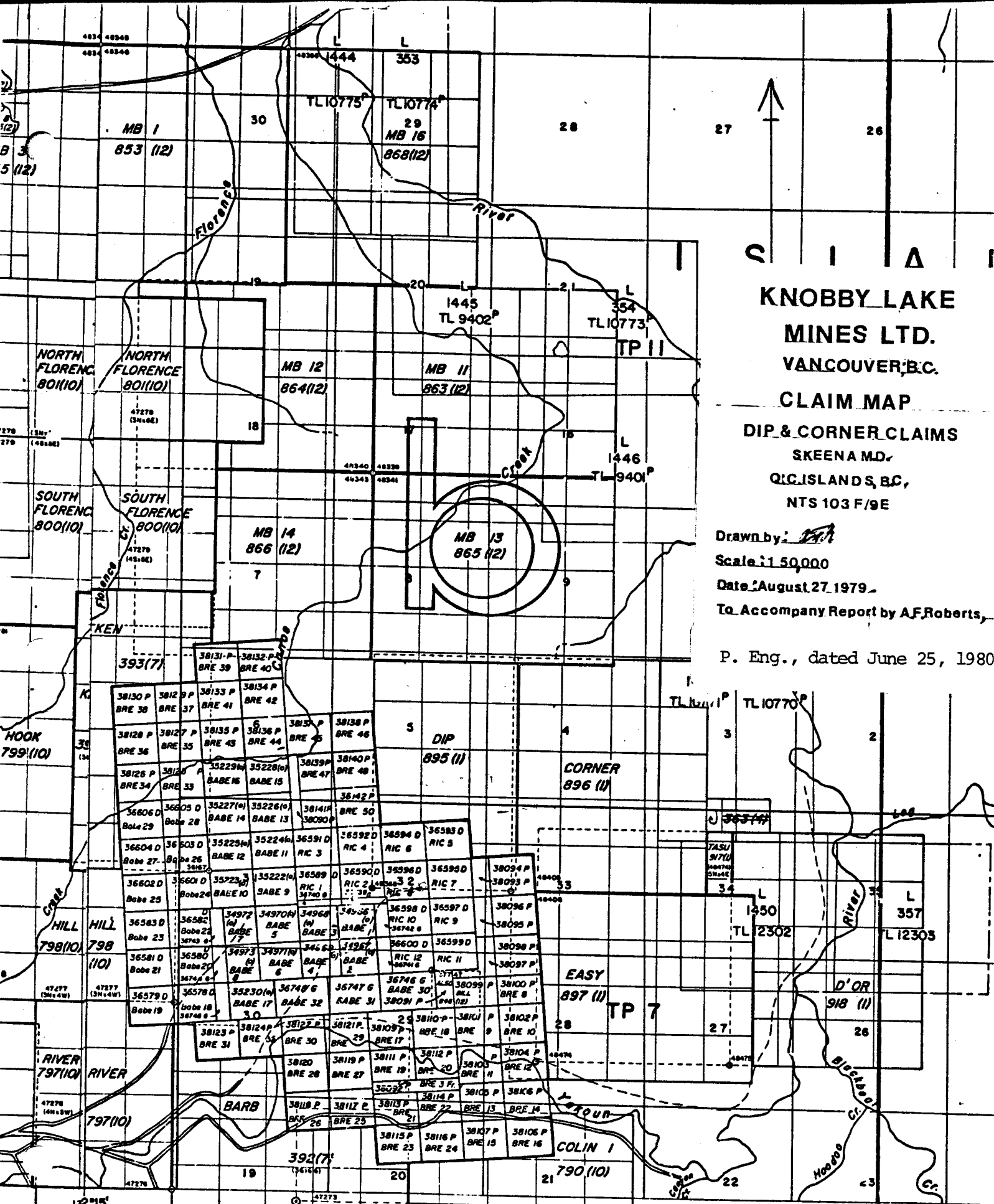
GENERAL GEOLOGY 5] 6] 7] 8]

No outcrops were seen on the property, and none have been reported by the contractor's crew.

The basis for the following data is "Bulletin 54, Geology of the Queen Charlotte Islands, B.C."

According to the map, the claims are underlain by Quaternary sediments, which overlie the Skonun Formation of sandstones, mudstone and conglomerate. Under this is the Masset Formation consisting of sub-aerial basalt and rhyolite with their various ash flows, all being brecciated.

- 
- 5] Geology Map: B.C. Department of Mines, Bulletin 54, 1:125,000 [Follows page 4]
- 6] B.C. Department of Mines & Petroleum Resources, Bulletin 54, Geology of the Queen Charlotte Islands, B.C., by A. Sutherland Brown, 1968
- 7] B.C. Department of Mines & Petroleum Resources, Babe Gold Prospect, Queen Charlotte Islands, B.C., by A. Sutherland Brown, T.G. Schroeter, 1977
- 8] Reports by A.F. Roberts, P.Eng., for Consolidated Cinola with Drill Logs, 1977-1979. Qualifying and Geochemical Reports for other companies, 1979 to date



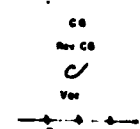
**KNOBBY LAKE  
MINES LTD.  
VANCOUVER, B.C.  
CLAIM MAP**

**DIP & CORNER CLAIMS  
SKEENA M.D.,  
Q.C. ISLANDS, B.C.,  
NTS 103 F/9E**

Drawn by: *PAH*  
Scale: 1:50,000  
Date: August 27, 1979.  
To Accompany Report by A.F. Roberts,  
P. Eng., dated June 25, 1980

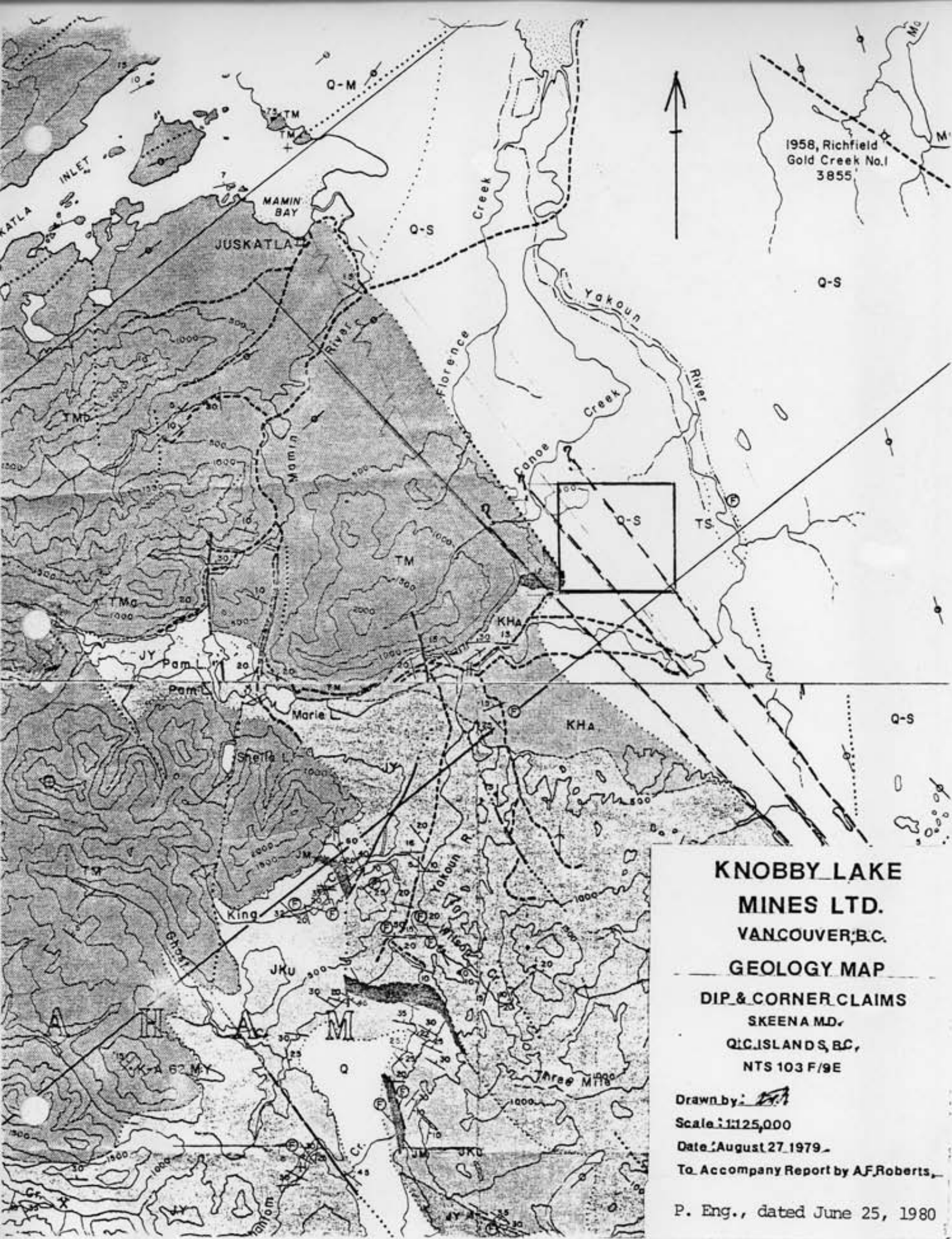
Mining Division Boundary  
Indian Reservation  
Mineral and Placer Reserve  
Ecological Reserve  
Park Boundary

Crown Granted  
Reverted C.G. Mineral Claim  
Forfeited Mineral Claim  
Verified Legal Corner Post  
Power Transmission Line



TO SOUTH SEE MAP IC3F/8E  
**MINERAL TIT**  
DEPARTMENT OF M  
This map is prepared as a qui





**KNOBBY LAKE  
MINES LTD.  
VANCOUVER, B.C.  
GEOLOGY MAP**

**DIP & CORNER CLAIMS  
SKEENA M.D.,  
Q.C. ISLANDS, B.C.,  
NTS 103 F/9E**

Drawn by: *AF*  
Scale: 1:125,000  
Date: August 27, 1979.  
To Accompany Report by AF Roberts,

P. Eng., dated June 25, 1980

There are 456 "B" horizon, and 625 "A" horizon samples.

Curves are drawn for 1,081 samples for arsenic, and mercury showing frequency versus range and probability curves for both. Then these were re-drawn for "A" and "B" horizons.

There appears to be leaching of the "A" horizon, and probable enrichment of the "B" horizon.

Gold does not appear to be affected. There are 40 "B" and 48 "A" samples. Total 8.23% for gold.

The frequency curve [1,081 samples] is an impossible thing.

The arsenic probability curve [1,081 samples] showed a very strong break at 3 ppm, indicating two separate families.

When the probability curves for arsenic separating "A" and "B" horizons were drawn they showed:

"A" horizon - Threshold 3 ppm, 80% at 4 ppm, and 90% or anomalous at 5-6 ppm

"B" horizon - Threshold, at the break in the curve at 5 ppm, well below the 50% mark at 11 ppm.

The 80% mark occurs at 26 ppm, and the 90% at 37 ppm

An attempt was made to make a map for each horizon, but that couldn't be made to fit for interpretation, as they

were intermixed. Finally, the decision was made to use the values from the 1,081 sample probability curve with 8 ppm as a threshold value. This is not too satisfactory, as it does not allow for leaching of the "A" horizon, being too low, but does allow for the enrichment in the "B" horizon to some extent. If there is leaching and enrichment.

For mercury the separate curves are separated and approximately parallel until they reach the threshold value of 300 ppb where they merge.

In mapping, the background value of 5 ppb for gold was left out, and the gold is shown on both arsenic and mercury maps.

There are a surprisingly high number of coincident anomalies.

A general northeasterly trend is obvious from the maps.

The best anomaly is in the area 2000E to 1700E, 1250N to 1250S, as a continuous string of anomalies occurs along the east boundary.

There is a strong anomaly near the centre at B.L. to 700S, 700E to 1100E.

There are isolated gold anomalies in the area 900E - 1100E to the B.L.

Most of these anomalies, if proven valid by future work, are large enough to provide open pit ore. Several small ones, mined individually could produce many tons.

There is some suggestion that some of the gold anomalies are more like veins.

### CONCLUSIONS

The geochemistry map has exhibited a large number of coincident gold-arsenic mercury anomalies.

The large number of samples taken in the "A" horizon creates a rather difficult problem in the interpretation. As the threshold values were obtained from probability curves, the values used are believed to be valid. They could be, in part, displaced by seepage.

Gold-arsenic anomalies are believed to be the most reliable, as mercury is very mobile. 12]

These anomalies justify further work on the property.

### RECOMMENDATIONS

If gold occurs in pyrite, similar to the Consolidated Cinola property, then the concentration of pyrite will be strong enough to show on a VLF-EM survey.

Therefore, a survey of this type using a Sabre Model 27 VLF-EM instrument is recommended.

The survey to be conducted on a 100 metre by 25 metre grid. Where a high gain is noted in the field, or a cross over, that section of the line should be repeated on a  $12\frac{1}{2}$  metre spacing, and line spacing reduced to 50 metres both sides of the responsive line.

Any outcrops should be mapped at this time.



COST ESTIMATEPhase I

The total length of the lines is 52.5 kilometres. There will probably be 10% increase for anomalous areas.

Then total line length is 57.75 km.

A contractor has estimated cost at \$300.00/km in this area.

Then Sabre Model 27 VLF-EM survey will cost		
[57.5] [300] =		\$17,325.00
Supervision, reports, maps		<u>5,000.00</u>
Sub-total		\$22,325.00
15% contingencies		<u>3,375.00</u>
Total		<u>\$25,700.00</u>
Say	<u>\$26,000.00</u>	

Phase II

Road building		\$15,000.00
Trenching, if conditions permit		
200 hours @ \$95.00/hour for backhoe		19,000.00
Assaying - 100 @ \$8.75 gold-silver		875.00
Mapping, supervision, reports, etc.		<u>5,000.00</u>
Sub-total		39,875.00
15% contingencies		<u>5,981.25</u>
Total		<u>\$45,856.25</u>
Say	<u>\$46,000.00</u>	

Phase III

This stage, diamond drilling, may be advanced to Phase II, if trenching is not possible. A minimum of 1,000 metres will be required at a cost of \$100.00/metre.

Mobilization-demobilization	\$ 2,000.00
Diamond Drilling, 1,000 metres @ \$100.00/metre	100,000.00
Sampling - 200 @ \$8.75, gold-silver	1,750.00
Supervision, maps, reports	<u>7,500.00</u>
Sub-total	111,250.00
15% contingencies	<u>16,687.50</u>
Total	<u><u>\$127,937.50</u></u>
Say	<u><u>\$128,000.00</u></u>

Respectfully submitted,



A.F. Roberts, P. Eng.,  
June 25, 1980



CERTIFICATE

I, A.F. Roberts of 812 Fairbrook Crescent, Richmond, B.C., do hereby certify that:

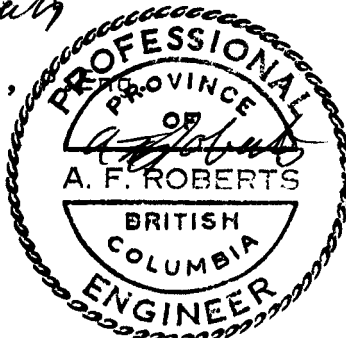
- [1] I am a graduate of the University of British Columbia, [B.Ap.Sc.] in Mining Engineering, 1951.
- [2] I am registered as a Professional Engineer of the Province of British Columbia, and am a member of The Canadian Institute of Mining and Metallurgy.
- [3] I have practiced my profession since 1951 with Quatsino Copper Gold Mines Ltd., Giant Mascot Mines Ltd., Coch-enour Willans Gold Mines Ltd., Mogul Mines Ltd., Kerr Addison Gold Mines Ltd., Atlantic Coast Copper Corporation Ltd., Wasamac Mines Ltd., Brenda Mines Ltd., and T.C. Explorations Ltd. Since January of 1970 I have been an independent Consultant.

Previous to, and during University, I worked as a miner underground, and on several exploration-development projects.

- [4] The accompanying report is based entirely on my personal analysis of the reports and other data referred to in the text, and on a personal examination of the property in the period August 23-25, 1979, and analysis of the assays from the Geochemical Survey.
- [5] I have no interest, direct or indirect, in the Dip, Corner Claims, or adjacent properties, nor have I any interest, direct or indirect, in any companies controlled by Knobby Lake Mines Ltd. I have not, nor do I expect to receive any interest in the shares of the Company, in its securities, or in those of any company with which it may become associated.
- [6] I consent to the use of this report in, or in connection with a prospectus, or a statement of material facts relating to the raising of funds for this project.

DATED at Vancouver, British Columbia, this twenty-fifth day of June, 1980.

*A.F. Roberts*  
A.F. Roberts,



**A. F. ROBERTS, P.ENG.**  
CONSULTING MINING ENGINEER

APPENDIX A

ASSAY CERTIFICATES

ASSAY PROCEDURES



ACME ANALYTICAL LABORATORIES LTD.

Assaying & Trace Analysis

852 E. Hastings St., Vancouver, B. C. V6A 1R6

phone:253 - 3158

To: Knobby Lake Mines Ltd.,  
807 - 543 Granville St.,  
Vancouver, B.C.  
V6C 1X8

File No. 80-283

Type of Samples Soils

Disposition

*1381 samples*

**GEOCHEMICAL ASSAY CERTIFICATE**

1

SAMPLE No.	Au	As	Hg							
CORNER OE 0S	.005	1	.190		org.					1
25	.005	1	.180		org.					2
50	.005	1	.330		org.					3
75	.005	2	.380		org.					4
100	.005	1	.210		org.					5
125	.005	1	.200		org.					6
150	.005	1	.345		org.					7
175	.005	1	.135		org.					8
200	.005	0	.210							9
225	.005	24	.470							10
250	.005	1	.150		org.					11
275	.005	0	.290		org.					12
300	.005	0	.190							13
325	.005	1	.260							14
350	.005	1	.250							15
375	.005	2	.265							16
400	.005	1	.210							17
425	.005	0	.345		org.					18
450	.005	0	.280		org.					19
475	.005	1	.235		org.					20
500	.005	32	.390							21
525	.005	1	.370							22
550	.005	1	.215							23
575	.005	2	.145							24
600	.005	0	.185		org.					25
625	.005	2	.165							26
650	.010	45	.240							27
675	.005	53	.170							28
700	.005	27	.210							29
725	.005	42	.100							30
750	.005	2	.085							31
775	.005	2	.070							32
800	.005	2	.145							33
825	.005	3	.115							34
CORNER OE 850S	.005	0	.210		org.					35
										36
										37
										38
										39
										40

*15*

All reports are the confidential property of clients  
All results are in PPM.

DIGESTION:.....

DETERMINATION:.....

DATE SAMPLES RECEIVED May 23, 1980

DATE REPORTS MAILED June 10, 1980

ASSAYER

DEAN TOYE, B.Sc.  
CHIEF CHEMIST  
CERTIFIED B.C. ASSAYER



To: Knobby Lake Mines Ltd.,

ACME ANALYTICAL LABORATORIES LTD.

Assaying & Trace Analysis

852 E. Hastings St., Vancouver, B. C. V6A 1R6

phone:253 - 3158

File No. 80-283

Type of Samples Soil

Disposition

GEOCHEMICAL ASSAY CERTIFICATE

2

SAMPLE No.	Au	As	Hg						
CORNER OE 875S	.005	3	.255		org.				1
900	.005	4	.200		org.				2
925	.005	1	.170		org.				3
950	.005	1	.280		org.				4
975	.005	2	.225		org.				5
1000	.005	1	.260		org.				6
1025	.005	2	.220		org.				7
1050	.005	2	.170						8
1075	.005	16	.105						9
1100	.005	2	.255		org.				10
1125	.005	4	.320		org.				11
1150	.005	3	.170		org.				12
1175	.005	6	.160		org.				13
1200	.005	2	.110		org.				14
1225	.005	13	.080						15
CORNER OE 1250S	.005	2	.195		org.				16
									17
									18
									19
CORNER OE ON	.005	115	.240		org.				20
25	.005	100	.275		org.				21
50	.010	78	.280		org.				22
75	.005	95	.190						23
100	.005	34	.175						24
125	.005	29	.035						25
150	.005	34	.075						26
175	.005	68	.220						27
200	.005	4	.195		org.				28
225	.005	6	.190		org.				29
250	.005	11	.185						30
275	.005	4	.280		org.				31
300	.005	13	.075						32
325	.005	3	.385		org.				33
350	.010	4	.530		org.				34
375	.010	9	.245						35
CORNER OE 400N	.005	3	.265		org.				36
									37
									38
									39
									40

All reports are the confidential property of clients  
All results are in PPM.

DIGESTION:.....

DETERMINATION:.....

DATE SAMPLES RECEIVED May 23, 1980

DATE REPORTS MAILED June 10, 1980

ASSAYER

DEAN TOYE, B.Sc.  
CHIEF CHEMIST  
CERTIFIED B.C. ASSAYER



To: Knobby Lake Mines Ltd.,

ACME ANALYTICAL LABORATORIES LTD.

Assaying & Trace Analysis

852 E. Hastings St., Vancouver, B. C. V6A 1R6

phone:253 - 3158

File No. 80-283

Type of Samples Soils

GEOCHEMICAL ASSAY CERTIFICATE

Disposition

3

SAMPLE No.	Au	As	Hg							
CORNER OE 425N	.005	48	.515							1
450	.005	39	2.100							2
475	.005	4	.505							3
500	.005	33	.345							4
525	.005	7	.350							5
550	.005	25	.430							6
575	.005	5	.275							7
600	.005	2	.365							8
625	.005	4	.290		org.					9
650	.005	23	.140							10
675	.005	3	.270		org.					11
700	.005	2	.280		org.					12
725	.005	3	.185		org.					13
750	.005	14	.265							14
775	.005	30	.375							15
800	.005	6	.085							16
825	.005	22	.270							17
850	.005	30	.130							18
875	.005	11	.150							19
900	.005	2	.415							20
925	.005	3	.190		org.					21
950	.005	4	.275		org.					22
975	.005	2	.075							23
1000	.005	22	.475							24
1025	.005	2	.285		org.					25
1050	.005	5	.360		org.					26
1075	.005	3	.155							27
1100	.005	18	.310		org.					28
1125	.005	2	.190		org.					29
1150	.005	3	.385		org.					30
1175	.005	5	.175		org.					31
1200	.005	3	.255		org.					32
1225	.005	6	.295		org.					33
CORNER OE 1250N	.005	2	.170		org.					34
										35
										36
										37
										38
										39
										40

All reports are the confidential property of clients  
All results are in PPM.

DIGESTION:.....

DETERMINATION:.....

DATE SAMPLES RECEIVED May 23, 1980

DATE REPORTS MAILED June 10, 1980

ASSAYER

DEAN TOYE, B.Sc.  
CHIEF CHEMIST  
CERTIFIED B.C. ASSAYER



To: Knobby Lake Mines Ltd.,

ACME ANALYTICAL LABORATORIES LTD.

Assaying & Trace Analysis

852 E. Hastings St., Vancouver, B. C. V6A 1R6

phone:253 - 3158

File No. 80-283

Type of Samples Soil

Disposition

### GEOCHEMICAL ASSAY CERTIFICATE

4

SAMPLE No.		Au	As	Hg							
CORNER 200E	0S	.005	4	.110	org.						1
	25	.005	2	.105	org.						2
	50	.005	2	.190	org.						3
	75	.005	2	.220							4
	100	.005	3	.205	org.						5
	125	.005	2	.100	org.						6
	150	.005	3	.240	org.						7
	175	.005	2	.195	org.						8
	200	.005	2	.400	org.						9
	225	.005	3	.330	org.						10
	250	.005	3	.460	org.						11
	275	.005	2	.320	org.						12
	300	.005	3	.320	org.						13
	325	.005	3	.310	org.						14
	350	.005	2	.140	org.						15
	375	.010	2	.175	org.						16
	400	.005	12	.045							17
	425	.010	2	.270	org.						18
	450	.005	1	.200	org.						19
	475	.005	2	.060							20
CORNER 200E	500S	.005	1	.410	org.						21
											22
											23
											24
CORNER 200E	525S	.005	1	.165	org.						25
	550	.005	1	.190							26
	575	.005	2	.240							27
	600	.005	1	.145	org.						28
	625	.005	1	.315	org.						29
	650	.005	18	.095							30
	675	.005	60	.130							31
	700	.005	82	.200							32
	725	.005	36	.115							33
	750	.005	7	.170							34
	775	.005	34	.255	org.						35
CORNER 200E	800S	.005	4	.465	org.						36
											37
											38
											39
											40

All reports are the confidential property of clients  
All results are in PPM.

DIGESTION:.....

DETERMINATION:.....

DATE SAMPLES RECEIVED May 23, 1980

DATE REPORTS MAILED June 10, 1980

ASSAYER

DEAN TOYE, B.Sc.  
CHIEF CHEMIST  
CERTIFIED B.C. ASSAYER





To: Knobby Lake Mines Ltd.,

ACME ANALYTICAL LABORATORIES LTD.

Assaying & Trace Analysis

852 E. Hastings St., Vancouver, B. C. V6A 1R6

phone:253 - 3158

File No. 80-283

Type of Samples Soils

Disposition

GEOCHEMICAL ASSAY CERTIFICATE

5

SAMPLE No.	Au	As	Hg						
CORNER 200E 825S	.005	7	.145						1
850	.010	2	.160	org.					2
875	.005	2	.195	org.					3
900	.005	3	.310	org.					4
925	.005	4	.280	org.					5
950	.005	25	.065						6
975	.005	4	.190	org.					7
1000	.010	6	.320	org.					8
1025	.010	46	.090						9
1050	.005	54	.185						10
1075	.005	5	.235	org.					11
CORNER 200E 1100S	.005	4	.195	org.					12
									13
									14
									15
									16
CORNER 200E ON	.005	2	.090	org.					17
25	.005	2	.230	org.					18
50	.005	2	.355	org.					19
75	.005	3	.265	org.					20
100	.005	3	.325	org.					21
125	.005	80	.200						22
150	.005	82	.175						23
175	.005	88	.200						24
200	.005	76	.175						25
225	.010	70	.160						26
250	.005	75	.175						27
275	.005	68	.185						28
300	.005	3	.195	org.					29
325	.005	3	.140	org.					30
350	.005	2	.280	org.					31
375	.005	5	.300	org.					32
400	.005	5	.305	org.					33
425	.005	3	.295	org.					34
450	.005	30	.140						35
475	.010	2	.295						36
CORNER 200E 500N	.005	2	.240						37
									38
									39
									40

All reports are the confidential property of clients  
All results are in PPM.

DIGESTION:.....

DETERMINATION:.....

DATE SAMPLES RECEIVED May 23, 1980

DATE REPORTS MAILED June 10, 1980

ASSAYER

DEAN TOYE, B.Sc.  
CHIEF CHEMIST  
CERTIFIED B.C. ASSAYER



ACME ANALYTICAL LABORATORIES LTD.

Assaying & Trace Analysis

852 E. Hastings St., Vancouver, B. C. V6A 1R6

phone:253 - 3158

To: Knobby Lake Mines Ltd.,

80-283

File No. \_\_\_\_\_

Type of Samples Soils

**GEOCHEMICAL ASSAY CERTIFICATE**

Disposition \_\_\_\_\_

SAMPLE No.	Au	As	Hg						
CORNER 200E 525N	.005	5	.245	org.					1
550	.005	4	.205	org.					2
575	.005	5	.220	org.					3
600	.005	2	.335	org.					4
625	.005	6	.305	org.					5
650	.005	2	.200	org.					6
675	.005	7	.225	org.					7
700	.005	9	.335	org.					8
725	.005	6	.230	org.					9
750	.005	10	.225	org.					10
775	.005	4	.160	org.					11
800	.005	4	.130	org.					12
825	.005	56	.160						13
850	.005	75	.150						14
875	.005	34	.150						15
900	.005	36	.165						16
925	.005	60	.160						17
950	.005	62	.130						18
975	.005	60	.170						19
1000	.005	70	.180						20
1025	.005	62	.160						21
1050	.005	15	.225	org.					22
1075	.005	72	.370	org.					23
1100	.005	88	.115						24
1125	.005	76	.350	org.					25
1150	.005	106	.265						26
1175	.005	104	.345	org.					27
1200	.010	100	.225						28
1225N	.005	52	.430	org.					29
CORNER 200E 1250N	.005	68	.090						30
									31
									32
									33
									34
CORNER 400E OS	.005	10	.175	org.					35
25	.005	8	.085	org.					36
50	.005	15	.110						37
75	.005	16	.065						38
100	.005	17	.095						39
CORNER 400E 125S	.005	26	.155						40

All reports are the confidential property of clients  
All results are in PPM.

DIGESTION:.....

DETERMINATION:.....

DATE SAMPLES RECEIVED May 23, 1980

DATE REPORTS MAILED June 10, 1980

ASSAYER

*Dean Toy*  
DEAN TOYE, B.Sc.  
CHIEF CHEMIST  
CERTIFIED B.C. ASSAYER



To: Knobby Lake Mines Ltd.,

ACME ANALYTICAL LABORATORIES LTD.

Assaying & Trace Analysis

852 E. Hastings St., Vancouver, B. C. V6A 1R6

phone:253 - 3158

File No. 80-283

Type of Samples Soils

Disposition

GEOCHEMICAL ASSAY CERTIFICATE

7

SAMPLE No.	Au	As	Hg							
CORNER 400E 150S	.005	10	.900							1
175	.005	14	.900							2
200	.005	10	.065							3
225	.005	6	.040							4
250	.005	10	.110							5
275	.005	5	.040							6
300	.005	4	.050							7
325	.005	30	.180							8
350	.005	8	.145							9
375	.005	6	.055							10
400	.005	2	.125							11
425	.005	17	.100							12
450	.005	11	.385							13
475	.005	18	.115							14
500	.005	16	.285							15
525	.005	12	.315							16
550	.005	10	.110							17
575	.005	6	.260							18
600	.005	16	.250							19
625	.005	32	.320							20
650	.005	10	.070							21
675	.005	18	.125							22
700	.005	5	.385							23
725	.005	11	.135							24
750	.005	10	.055							25
775	.010	34	.290							26
800	.005	32	.280							27
825	.005	6	.145							28
850	.010	22	.140							29
875	.005	6	.115							30
900	.005	8	.095							31
CORNER 400E 925S	.005	5	.095							32
										33
										34
										35
										36
CORNER 400E 950S	.005	2	.210							37
975	.005	2	.185							38
1000	.005	2	.165							39
CORNER 400E 1025S	.005	3	.150							40

org. /

All reports are the confidential property of clients  
All results are in PPM.

DIGESTION:.....

DETERMINATION:.....

DATE SAMPLES RECEIVED May 23, 1980

DATE REPORTS MAILED June 10, 1980

ASSAYER Dean Toy

DEAN TOYE, B.Sc.  
CHIEF CHEMIST  
CERTIFIED B.C. ASSAYER



ACME ANALYTICAL LABORATORIES LTD.

Assaying & Trace Analysis

852 E. Hastings St., Vancouver, B. C. V6A 1R6

phone:253 - 3158

To: Kobby Lake Mines Ltd.,

File No. 80-283

Type of Samples Soils

Disposition

GEOCHEMICAL ASSAY CERTIFICATE

8

SAMPLE No.	Au	As	Hg							
CORNER 400E 1050S	.005	2	.175				org.			1
1075	.005	18	.035							2
1100	.005	60	.085							3
1125	.005	4	.355							4
1150	.005	3	.330							5
1175	.005	2	.295							6
CORNER 400E 1200S	.005	4	.245							7
										8
										9
										10
										11
CORNER 400E ON	.005	2	.195				org.			12
25	.005	5	.090				org.			13
50	.005	4	.080				org.			14
75	.005	2	.110				org.			15
100	.005	5	.170				org.			16
125	.005	2	.195							17
150	.005	1	.365				org.			18
175	.005	2	.180				org.			19
200	.005	2	.075				org.			20
225	.005	3	.075				org.			21
250	.005	2	.065				org.			22
275	.005	3	.050				org.			23
300	.005	4	.145				org.			24
325	.005	3	.125				org.			25
350	.005	11	.120				org.			26
375	.005	3	.125				org.			27
400	.005	2	.245							28
425	.005	3	.235							29
450	.005	2	.270				org.			30
475	.005	3	.190							31
500	.005	3	.205							32
525	.005	4	.210							33
550	.005	2	.185				org.			34
575	.005	3	.200				org.			35
600	.005	2	.135				org.			36
CORNER 400E 625N	.005	8	.190							37
										38
										39
										40

All reports are the confidential property of clients  
All results are in PPM.

DIGESTION:.....

DETERMINATION:.....

DATE SAMPLES RECEIVED May 23, 1980

DATE REPORTS MAILED June 10, 1980

ASSAYER

DEAN TOYE, B.Sc.  
CHIEF CHEMIST  
CERTIFIED B.C. ASSAYER



To: Knobby Lake Mines Ltd.,

ACME ANALYTICAL LABORATORIES LTD.

Assaying & Trace Analysis

852 E. Hastings St., Vancouver, B. C. V6A 1R6

phone:253 - 3158

File No. 80-283

Type of Samples Soils

Disposition

### GEOCHEMICAL ASSAY CERTIFICATE

9

SAMPLE No.		Au	As	Hg								
CORNER 400E	650N	.005	9	.150					org.			1
	675	.005	12	.135								2
	700	.005	4	.140					org.			3
	725	.005	2	.110					org.			4
	750	.005	3	.105					org.			5
	775	.005	2	.135					org.			6
	800	.005	3	.120					org.			7
	825	.005	4	.110					org.			8
	850	.005	2	.140					org.			9
	875	.005	4	.175					org.			10
	900	.005	15	.180								11
	925	.005	24	.145								12
	950	.005	4	.225					org.			13
	975	.005	3	.245					org.			14
	1000	.005	3	.125					org.			15
	1025	.005	4	.140					org.			16
	1050	.005	2	.135					org.			17
	1075	.005	5	.230					org.			18
	1100	.005	6	.105								19
	1125	.005	4	.240					org.			20
	1150	.005	5	.170					org.			21
	1175	.005	8	.040					org.			22
	1200	.005	2	.195					org.			23
	1225	.005	6	.190					org.			24
CORNER 400E	1250N	.005	5	.220					org.			25
												26
												27
												28
												29
CORNER 600E	OS	.005	4	.170					org.			30
	25	.010	5	.240					org.			31
	50	.010	12	.275					org.			32
	75	.005	2	.210					org.			33
	100	N.S.										34
	125	.005	18	.250					org.			35
	150	.005	12	.165					org.			36
	175	.005	10	.500					org.			37
CORNER 600E	200S	.005	8	.065								38
												39
												40

All reports are the confidential property of clients  
All results are in PPM.

DIGESTION:.....

DETERMINATION:.....

DATE SAMPLES RECEIVED May 23, 1980

DATE REPORTS MAILED June 10, 1980

ASSAYER

DEAN TOYE, B.Sc.  
CHIEF CHEMIST  
CERTIFIED B.C. ASSAYER



To: Knobby Lake Mines Ltd.,

ACME ANALYTICAL LABORATORIES LTD.

Assaying & Trace Analysis

852 E. Hastings St., Vancouver, B. C. V6A 1R6

phone:253 - 3158

File No. 80-283

Type of Samples Soils

Disposition

GEOCHEMICAL ASSAY CERTIFICATE

10

SAMPLE No.	Au	As	Hg							
CORNER 600E 225S	.005	5	.150							1
250	.005	3	.180	org.						2
275	.005	4	.030							3
300	.005	3	.355	org.						4
325	.005	4	.250	org.						5
350	.005	7	.280	org.						6
375	.005	6	.230	org.						7
400	.005	3	.140	org.						8
425	.005	8	.240	org.						9
450	.005	3	.100	org.						10
475	.005	4	.120	org.						11
500	.005	2	.070	org.						12
525	.005	2	.050	org.						13
550	.005	2	.085	org.						14
575	.005	3	.090	org.						15
600	.005	2	.055	org.						16
625	.005	4	.045	org.						17
650	.010	5	.040	org.						18
675	.005	2	.195	org.						19
700	.005	2	.150	org.						20
725	.005	4	.200	org.						21
750	.010	2	.135	org.						22
775	.005	4	.095	org.						23
800	.005	2	.110	org.						24
825	.005	3	.100	org.						25
850	.005	2	.245	org.						26
875	.005	2	.220	org.						27
900	.005	3	.145	org.						28
925	.010	2	.175	org.						29
950	.010	2	.225	org.						30
975	.005	3	.145	org.						31
1000	.005	4	.160	org.						32
1025	.005	5	.175	org.						33
1050	.005	2	.205	org.						34
1075	.005	3	.320	org.						35
1100	.005	3	.180	org.						36
1125	.005	2	.120	org.						37
CORNER 600E 1150S	.005	4	.195	org.						38
										39
										40

All reports are the confidential property of clients  
All results are in PPM.

DIGESTION:.....

DETERMINATION:.....

DATE SAMPLES RECEIVED May 23, 1980

DATE REPORTS MAILED June 10, 1980

ASSAYER Dean Toy

DEAN TOYE, B.Sc.  
CHIEF CHEMIST  
CERTIFIED B.C. ASSAYER



To: Knobby Lake Mines Ltd.,

ACME ANALYTICAL LABORATORIES LTD.

Assaying & Trace Analysis

852 E. Hastings St., Vancouver, B. C. V6A 1R6

phone:253 - 3158

File No. 80-283

Type of Samples Soils

GEOCHEMICAL ASSAY CERTIFICATE

Disposition

11

SAMPLE No.	Au	As	Hg							
CORNER 600E 1175S	.005	5	.190	org.						1
CORNER 600E 1200S	.005	3	.155	org.						2
										3
CORNER 600E ON	.040	2	.045	org.						4
25	.005	3	.060	org.						5
50	.005	2	.085	org.						6
75	.005	3	.075	org.						7
100	.005	3	.130							8
125	.005	2	.150	org.						9
150	.005	5	.185	org.						10
175	.010	4	.145	org.						11
200	.010	3	.125	org.						12
225	.005	2	.150	org.						13
250	.005	2	.175	org.						14
275	.005	3	.155	org.						15
300	.005	2	.105	org.						16
325	.005	4	.110	org.						17
350	.005	2	.150	org.						18
375	.005	3	.170	org.						19
400	.005	2	.145	org.						20
425	.005	3	.235	org.						21
450	.005	4	.215	org.						22
475	.005	5	.110							23
500	.005	3	.220	org.						24
525	.005	2	.115							25
550	.005	4	.085	org.						26
575	.005	2	.125	org.						27
600	.005	3	.100	org.						28
625	.005	3	.130	org.						29
650	.005	3	.150	org.						30
675	.005	2	.115	org.						31
700	.010	2	.070	org.						32
725	.005	4	.110	org.						33
750	.005	4	.140	org.						34
775	.020	3	.075	org.						35
800	.005	3	.115	org.						36
825	.005	2	.095	org.						37
850	.005	3	.075							38
CORNER 600E 875N	.005	4	.115							39
										40

All reports are the confidential property of clients  
All results are in PPM.

DIGESTION:.....

DETERMINATION:.....

DATE SAMPLES RECEIVED May 23, 1980

DATE REPORTS MAILED June 10, 1980

ASSAYER

DEAN TOYE, B.Sc.  
CHIEF CHEMIST  
CERTIFIED B.C. ASSAYER



ACME ANALYTICAL LABORATORIES LTD.

Assaying & Trace Analysis

852 E. Hastings St., Vancouver, B. C. V6A 1R6

phone:253 - 3158

To: Knobby Lake Mines Ltd.,

File No. 80-283

Type of Samples Soils

GEOCHEMICAL ASSAY CERTIFICATE

Disposition

12

SAMPLE No.		Au	As	Hg						
CORNER 600E	900N	.030	2	.095				org.		1
	925	.005	4	.090				org.		2
	950	.005	9	.075						3
	975	.010	20	.235						4
	1000	.005	9	.175						5
	1025	.005	24	.105						6
	1050	.005	2	.085						7
	1075	.005	5	.040						8
	1100	.005	11	.200						9
	1125	.005	15	.080						10
	1150	.005	12	.050						11
	1175	.005	2	.050						12
	1200	.005	2	.080						13
	1225	.005	2	.090				org.		14
CORNER 600E	1250N	.010	2	.075				org.		15
										16
										17
										18
CORNER 800E	0S	.005	2	.250				org.		19
	25	.005	2	.170				org.		20
	50	.005	4	.210				org.		21
	75	.005	9	.075						22
	100	.005	8	.140						23
	125	.005	30	.110						24
	150	.005	3	.175				org.		25
	175	.005	20	.035						26
	200	.005	2	.125				org.		27
	225	.005	16	.090				org.		28
	250	.005	3	.130				org.		29
	275	.005	2	.175				org.		30
	300	.005	3	.110				org.		31
	325	.010	2	.095				org.		32
	350	.005	2	.070				org.		33
	375	.005	2	.035				org.		34
	400	.005	4	.050				org.		35
	425	.005	2	.035				org.		36
CORNER 800E	450S	.005	3	.035				org.		37
										38
										39
										40

All reports are the confidential property of clients  
All results are in PPM.

DIGESTION:.....

DETERMINATION:.....

DATE SAMPLES RECEIVED May 23, 1980

DATE REPORTS MAILED June 10, 1980

ASSAYER Dean Toy

DEAN TOYE, B.Sc.  
CHIEF CHEMIST  
CERTIFIED B.C. ASSAYER





To: Knobby Lake Mines Ltd.,

ACME ANALYTICAL LABORATORIES LTD.

Assaying & Trace Analysis

852 E. Hastings St., Vancouver, B. C. V6A 1R6

phone:253 - 3158

File No. 80-283

Type of Samples Soils

Disposition \_\_\_\_\_

### GEOCHEMICAL ASSAY CERTIFICATE

13

SAMPLE No.	Au	As	Hg							
CORNER 800E 475S	.005	2	.015				org.			1
500	<del>.010</del>	3	.050				org.			2
525	.005	3	.070				org.			3
550	<del>.020</del>	4	.155				org.			4
575	.005	2	.220				org.			5
600	.005	3	.260				org.			6
625	.005	28	.405							7
650	<del>.010</del>	4	.260							8
675	<del>.010</del>	16	.265							9
700	.005	2	.315				org.			10
725	.005	10	.235							11
750	<del>.020</del>	6	.085							12
775	.005	3	.260				org.			13
800	.005	3	.320				org.			14
825	<del>.010</del>	4	.430				org.			15
850	.005	25	.275							16
875	<del>.020</del>	14	.295							17
900	.005	16	.230							18
925	.005	3	.215							19
950	.005	2	.295				org.			20
975	.005	4	.125							21
1000	.005	2	.335				org.			22
1025	<del>.010</del>	3	.160				org.			23
1050	<del>.010</del>	4	.140				org.			24
1075	.005	2	.140				org.			25
1100	.005	2	.205				org.			26
1125	.005	4	.290				org.			27
CORNER 800E 1150S N.S.										28
										29
										30
										31
										32
CORNER 800E ON	.005	2	.265							33
25	<del>.010</del>	3	.125							34
50	.005	2	.215				org.			35
75	<del>.010</del>	3	.250							36
100	.005	28	.150							37
125	.005	3	.235							38
CORNER 800E 150N	.005	2	.295				org.			39
										40

All reports are the confidential property of clients  
All results are in PPM.

DIGESTION:.....

DETERMINATION:.....

DATE SAMPLES RECEIVED May 23, 1980

DATE REPORTS MAILED June 10, 1980

ASSAYER

*Dean Toye*  
DEAN TOYE, B.Sc.  
CHIEF CHEMIST  
CERTIFIED B.C. ASSAYER



ACME ANALYTICAL LABORATORIES LTD.

Assaying & Trace Analysis

852 E. Hastings St., Vancouver, B. C. V6A 1R6

phone:253 - 3158

To: Knobby Lake Mines Ltd.,

File No. 80-283

Type of Samples Soils

Disposition

GEOCHEMICAL ASSAY CERTIFICATE

14

SAMPLE No.	Au	As	Hg							
CORNER 800E 175N	.005	2	.180							1
200	.005	3	.145							2
225	.005	3	.150							3
250	.005	4	.135							4
275	.005	4	.085							5
300	.005	3	.430		org.					6
325	.005	4	.160		org.					7
350	.005	3	.140		org.					8
375	.005	3	.180		org.					9
400	.005	2	.430							10
425	.005	5	.120							11
450	.005	2	.300		org.					12
475	.010	2	.170							13
500	.005	2	.350							14
525	.005	3	.160		org.					15
550	.005	4	.080							16
575	.005	2	.160							17
600	.005	4	.165							18
625	.005	30	.185							19
650	.005	2	.250							20
675	.005	5	.140		org.					21
700	.005	4	.265							22
725	.005	34	.090		org.					23
750	.010	38	.170							24
775	.020	30	.210							25
800	.005	28	.285							26
825	.005	15	.150							27
850	.005	30	.165							28
875	.010	21	.220							29
900	.005	5	.330		org.					30
925	.005	6	.370		org.					31
950	.005	7	.150							32
975	.005	28	.110							33
1000	.005	22	.160							34
CORNER 800E 1025N	.005	9	.170							35
										36
										37
										38
										39
										40

All reports are the confidential property of clients  
All results are in PPM.

DIGESTION:.....

DETERMINATION:.....

DATE SAMPLES RECEIVED May 23, 1980

DATE REPORTS MAILED June 10, 1980

ASSAYER

DEAN TOYE, B.Sc.  
CHIEF CHEMIST  
CERTIFIED B.C. ASSAYER



To: Knobby Lake Mines Ltd.,

ACME ANALYTICAL LABORATORIES LTD.

Assaying & Trace Analysis

852 E. Hastings St., Vancouver, B. C. V6A 1R6

phone:253 - 3158

File No. 80-283

Type of Samples Soil

Disposition

### GEOCHEMICAL ASSAY CERTIFICATE

15

SAMPLE No.	Au	As	Hg							
CORNER 80GE 1050N	.005	7	.150							1
1075	.005	24	.080							2
1100	.005	33	.135							3
1125	.020	22	.105							4
1150	.040	20	.120							5
1175	.005	13	.140							6
1200	.005	8	.160							7
1225	.005	4	.145							8
CORNER 80OE 1250N	.005	32	.155							9
										10
										11
										12
										13
CORNER 100OE OS	.005	3	.240		org.					14
25	.010	4	.175		org.					15
50	.020	4	.265		org.					16
75	.005	2	.190		org.					17
100	.010	2	.275		org.					18
125	.010	4	.175		org.					19
150	.005	2	.250		org.					20
175	.005	2	.095		org.					21
200	.005	3	.115		org.					22
225	.010	4	.170		org.					23
250	.010	3	.090		org.					24
275	.010	3	.170		org.					25
300	.005	3	.185		org.					26
325	.005	2	.130		org.					27
350	.005	3	.080		org.					28
375	.005	3	.105		org.					29
400	.005	5	.105		org.					30
425	.010	6	.085		org.					31
450	.005	3	.160		org.					32
475	.005	3	.150		org.					33
500	.010	3	.145		org.					34
525	.005	2	.135		org.					35
550	.005	3	.240		org.					36
575	.005	3	.140		org.					37
CORNER 100OE 600S	.005	2	.095		org.					38
										39
										40

All reports are the confidential property of clients  
All results are in PPM.

DIGESTION:.....

DETERMINATION:.....

DATE SAMPLES RECEIVED May 23, 1980

DATE REPORTS MAILED June 10, 1980

ASSAYER

DEAN TOYE, B.Sc.  
CHIEF CHEMIST  
CERTIFIED B.C. ASSAYER



To: Knobby Lake Mines Ltd.,

ACME ANALYTICAL LABORATORIES LTD.

Assaying & Trace Analysis

852 E. Hastings St., Vancouver, B. C. V6A 1R6

phone:253 - 3158

File No. 80-283

Type of Samples Soils

### GEOCHEMICAL ASSAY CERTIFICATE

Disposition \_\_\_\_\_

16

SAMPLE No.	Au	As	Hg							
CORNER 1000E 625S	.005	3	.140					org.		1
650	.005	2	.135					org.		2
675	.005	2	.195					org.		3
700	.005	3	.080					org.		4
725	.005	2	.200					org.		5
750	.005	3	.095					org.		6
775	.005	3	.130					org.		7
800	.005	2	.125					org.		8
825	.005	3	.135					org.		9
850	.005	2	.110					org.		10
875	.005	2	.125					org.		11
900	.005	3	.130					org.		12
925	.005	3	.145					org.		13
950	.005	18	.245							14
975	.005	4	.265					org.		15
1000	.005	3	.270					org.		16
1025	.005	38	.170							17
1050	.005	2	.210					org.		18
1075	.005	4	.190					org.		19
1100	.005	2	.215					org.		20
1125	.005	18	.190					org.		21
CORNER 1000E 1150S	.005	5	.270							22
										23
										24
										25
										26
CORNER 1000E ON	.005	2	.065							27
25	.005	4	.095							28
50	.005	5	.100					org.		29
75	.005	3	.070					org.		30
100	.005	5	.070					org.		31
125	.005	2	.090					org.		32
150	.005	4	.030					org.		33
175	.005	3	.065					org.		34
200	.005	3	.040					org.		35
225	.005	3	.025					org.		36
250	.005	5	.065					org.		37
275	.005	2	.070					org.		38
CORNER 1000E 300N	.005	3	.035					org.		39
										40

All reports are the confidential property of clients  
All results are in PPM.

DIGESTION:.....

DETERMINATION:.....

DATE SAMPLES RECEIVED May 23, 1980

DATE REPORTS MAILED June 10, 1980

ASSAYER

Dean Toye  
DEAN TOYE, B.Sc.  
CHIEF CHEMIST  
CERTIFIED B.C. ASSAYER



To: Knobby Lake Mines Ltd.,

ACME ANALYTICAL LABORATORIES LTD.

Assaying & Trace Analysis

852 E. Hastings St., Vancouver, B. C. V6A 1R8

phone: 253 - 3158

File No. 80-283

Type of Samples Soils

GEOCHEMICAL ASSAY CERTIFICATE

Disposition

17

SAMPLE No.	Au	As	Hg						
CORNER 1000E 325N	.005	1	.135	org.					1
350	.005	3	.190	org.					2
375	.005	1	.165	org.					3
400	.005	2	.120	org.					4
425	.005	1	.110	org.					5
450	.005	1	.145	org.					6
475	.005	2	.085	org.					7
500	.005	1	.080	org.					8
525	.005	2	.115	org.					9
550	.005	3	.220						10
575	.005	2	.215	org.					11
600	.005	4	.185						12
625	.005	13	.080						13
650	.005	3	.055						14
675	.010	2	.065						15
700	.005	2	.090						16
725	.005	5	.140						17
750	.005	2	.260	org.					18
775	.005	1	.285	org.					19
800	.005	5	.235	org.					20
825	.005	1	.190	org.					21
850	.005	27	.145						22
875	.010	2	.215	org.					23
900	.005	3	.235	org.					24
925	.005	3	.280	org.					25
950	.005	2	.180	org.					26
975	.005	4	.205	org.					27
1000	.005	1	.190	org.					28
1025	.005	3	.240	org.					29
1050	.010	2	.200	org.					30
1075	.005	1	.140						31
1100	.005	2	.205	org.					32
1125	.005	3	.110						33
1150	.005	3	.220	org.					34
1175	.005	1	.130	org.					35
1200	.005	3	.170	org.					36
1225	.005	3	.140	org.					37
CORNER 1000E 1250N	.005	2	.240	org.					38
									39
									40

All reports are the confidential property of clients  
All results are in PPM.

DIGESTION:.....

DETERMINATION:.....

DATE SAMPLES RECEIVED May 23, 1980

DATE REPORTS MAILED June 10, 1980

ASSAYER

DEAN TOYE, B.Sc.  
CHIEF CHEMIST  
CERTIFIED B.C. ASSAYER



To: Knobby Lake Mines Ltd.,

ACME ANALYTICAL LABORATORIES LTD.

Assaying & Trace Analysis

852 E. Hastings St., Vancouver, B. C. V6A 1R6

phone:253 - 3158

File No. 80-283

Type of Samples Soils

Disposition

GEOCHEMICAL ASSAY CERTIFICATE

18

SAMPLE No.	Au	As	Hg							
CORNER 1200E OS	.005	25	.160							1
25	.005	13	.080							2
50	.005	2	.160		org.					3
75	.005	3	.400		org.					4
100	.005	2	.260		org.					5
125	.005	2	.260		org.					6
150	.005	10	.530		org.					7
175	.005	4	.200		org.					8
200	.005	4	.220		org.					9
225	.005	3	.320		org.					10
250	.005	3	.390		org.					11
275	.005	2	.360		org.					12
300	.005	4	.410		org.					13
325	.005	3	.360		org.					14
350	.005	9	.270							15
375	.005	2	.360							16
400	.005	4	.440		org.					17
425	.005	6	.180							18
450	.005	5	.215		org.					19
475	.005	5	.240		org.					20
500	.005	4	.310		org.					21
525	.005	10	.335		org.					22
550	.005	11	.300		org.					23
575	.005	2	.330		org.					24
600	.005	2	.320		org.					25
625	.005	4	.240		org.					26
650	.005	3	.180		org.					27
675	.005	2	.200		org.					28
700	.005	2	.225		org.					29
725	.005	3	.215		org.					30
750	.005	3	.260		org.					31
775	.005	2	.235		org.					32
800	.005	3	.325		org.					33
825	.005	2	.250		org.					34
850	.005	2	.190		org.					35
875	.005	3	.185		org.					36
CORNER 1200E 900S	.005	3	.200		org.					37
										38
										39
										40

All reports are the confidential property of clients  
All results are in PPM.

DIGESTION:.....

DETERMINATION:.....

DATE SAMPLES RECEIVED May 23, 1980

DATE REPORTS MAILED June 10, 1980

ASSAYER *Dean Toye*

DEAN TOYE, B.Sc.  
CHIEF CHEMIST  
CERTIFIED B.C. ASSAYER



To: Knobby Lake Mines Ltd.,

ACME ANALYTICAL LABORATORIES LTD.

Assaying & Trace Analysis

852 E. Hastings St., Vancouver, B. C. V6A 1R6

phone:253 - 3158

File No. 80-283

Type of Samples Soil

GEOCHEMICAL ASSAY CERTIFICATE

Disposition

19

SAMPLE No.	Au	As	Hg						
CORNER 1200E 925S	.005	1	.155	org.					1
950	.005	2	.125	org.					2
975	.005	1	.195	org.					3
1000	.005	1	.095	org.					4
1025	.020	3	.100	org.					5
1050	.070	2	.260	org.					6
1075	.020	3	.175	org.					7
CORNER 1200E 1100S	.005	4	.235	org.					8
									9
									10
									11
									12
CORNER 1200E ON	.005	2	.090	org.					13
25	.005	2	.130	org.					14
50	.005	3	.100	org.					15
75	.005	6	.100	org.					16
100	.005	2	.100	org.					17
125	.005	2	.090	org.					18
150	.005	1	.090	org.					19
175	.005	3	.060	org.					20
200	.005	3	.050	org.					21
225	.005	2	.120	org.					22
250	.005	2	.090	org.					23
275	.005	1	.075	org.					24
300	.005	1	.150	org.					25
325	.005	2	.255	org.					26
350	.005	1	.275	org.					27
375	.005	4	.260	org.					28
400	.005	11	.135	org.					29
425	.005	27	.065						30
450	.005	30	.065						31
475	.005	23	.110						32
500	.005	3	.390	org.					33
525	.005	22	.125						34
550	.005	2	.210	org.					35
575	.005	3	.325	org.					36
CORNER 1200E 600N	.005	1	.075						37
									38
									39
									40

All reports are the confidential property of clients  
All results are in PPM.

DIGESTION:.....

DETERMINATION:.....

DATE SAMPLES RECEIVED May 23, 1980

DATE REPORTS MAILED June 10, 1980

ASSAYER

DEAN TOYE, B.Sc.  
CHIEF CHEMIST  
CERTIFIED B.C. ASSAYER



To: Knobby Lake Mines Ltd.,

ACME ANALYTICAL LABORATORIES LTD.

Assaying & Trace Analysis

852 E. Hastings St., Vancouver, B.C. V6A 1R6

phone: 253 - 3158

File No. 80-283

Type of Samples Soils

### GEOCHEMICAL ASSAY CERTIFICATE

Disposition \_\_\_\_\_

20

SAMPLE No.	Au	As	Hg						
CORNER 1200E 625N	.005	15	.145						1
650	.005	3	.135	org.					2
675	.005	2	.220	org.					3
700	.005	2	.145	org.					4
725	.005	4	.145	org.					5
750	.005	3	.150	org.					6
775	.005	6	.105	org.					7
800	.005	2	.045						8
825	.005	2	.145	org.					9
850	.005	2	.100	org.					10
875	.005	4	.115	org.					11
900	.005	4	.145	org.					12
925	.005	2	.250	org.					13
950	.005	6	.070						14
975	.005	4	.230	org.					15
1000	.005	2	.155						16
1025	.005	3	.295	org.					17
1050	.005	3	.355	org.					18
1075	.005	5	.185	org.					19
1100	.005	3	.265	org.					20
1125	.005	4	.355	org.					21
1150	.005	2	.155	org.					22
1175	.005	3	.265	org.					23
1200	.005	2	.170	org.					24
1225	.005	4	.140	org.					25
CORNER 1200E 1250N	.005	2	.320	org.					26
									27
									28
									29
									30
									31
CORNER 1400E OS	.005	3	.260	org.					32
25	.005	4	.360	org.					33
50	.005	5	.135	org.					34
75	.005	3	.175	org.					35
100	.005	4	.165	org.					36
125	.005	6	.340	org.					37
CORNER 1400E 150S	.005	5	.195	org.					38
									39
									40

All reports are the confidential property of clients  
All results are in PPM.

DIGESTION:.....

DETERMINATION:.....

DATE SAMPLES RECEIVED May 23, 1980

DATE REPORTS MAILED June 10, 1980

ASSAYER

*Dean Toy*  
DEAN TOYE, B.Sc.  
CHIEF CHEMIST  
CERTIFIED S.C. ASSAYER





To: Knobby Lake Mines Ltd.,

ACME ANALYTICAL LABORATORIES LTD.

Assaying & Trace Analysis

852 E. Hastings St., Vancouver, B. C. V6A 1R6

phone: 253 - 3158

File No. 80-283

Type of Samples Soils

GEOCHEMICAL ASSAY CERTIFICATE

Disposition

21

SAMPLE No.	Au	As	Hg						
CORNER 1400E 175S	.005	3	.115		org.				1
200	.005	3	.135						2
225	.005	2	.280		org.				3
250	.005	3	.230		org.				4
275	.005	5	.245		org.				5
300	.005	2	.340		org.				6
325	.005	8	.270		org.				7
350	.005	2	.295		org.				8
375	.005	3	.370		org.				9
400	.005	4	.170		org.				10
425	.005	4	.295		org.				11
450	.005	2	.285		org.				12
475	.005	3	.065		org.				13
500	.010	13	.120						14
525	.005	6	.305		org.				15
550	.005	5	.135		org.				16
575	.005	3	.210		org.				17
600	.005	3	.230		org.				18
625	.005	12	.165						19
650	.005	2	.240		org.				20
675	.005	4	.275		org.				21
700	.005	3	.185		org.				22
725	.005	3	.205		org.				23
750	.005	2	.270		org.				24
775	.005	4	.275		org.				25
800	.005	3	.155		org.				26
825	.005	3	.260		org.				27
850	.005	4	.205		org.				28
875	.005	3	.110		org.				29
900	.005	3	.230		org.				30
925	.005	4	.200						31
950	.005	3	.310		org.				32
975	.005	3	.155		org.				33
1000	.005	4	.190		org.				34
1025	.005	4	.175		org.				35
1050	.005	6	.240		org.				36
1075	.005	2	.200		org.				37
1100S	.005	2	.140		org.				38
1125	.005	4	.165		org.				39
CORNER 1400E 1150S	.005	4	.305		org.				40

All reports are the confidential property of clients  
All results are in PPM.

DIGESTION:.....

DETERMINATION:.....

DATE SAMPLES RECEIVED May 23, 1980

DATE REPORTS MAILED June 10, 1980

ASSAYER

DEAN TOYE, B.Sc.  
CHIEF CHEMIST  
CERTIFIED B.C. ASSAYER



To: Kobby Lake Mines Ltd.,

ACME ANALYTICAL LABORATORIES LTD.

Assaying & Trace Analysis

852 E. Hastings St., Vancouver, B. C. V6A 1R6

phone: 253 - 3158

File No. 80-283

Type of Samples Soils

GEOCHEMICAL ASSAY CERTIFICATE

Disposition

22

SAMPLE No.	Au	As	Hg							
CORNER 1400E ON	.005	5	.075							1
25	.005	11	.040							2
50	.005	6	.130							3
75	.005	20	.090							4
100	.005	10	.110							5
125	.005	5	.145							6
150	.005	13	.250							7
175	.005	4	.090							8
200	.005	5	.135							9
225	.005	14	.495							10
250	.005	3	.125							11
275	.005	14	.120							12
300	.005	3	.170							13
325	.005	6	.115							14
350	.005	2	.155							15
375	.005	2	.250	org.						16
400	.005	18	.575							17
425	.005	8	.115							18
450	.005	18	.310							19
475	.005	6	.250							20
500	.005	4	.095							21
525	.005	6	.345	org.						22
550	.005	18	.135							23
575	.005	18	.085							24
600	.005	5	.070							25
625	.005	4	.340	org.						26
650	.005	3	.135							27
675	.005	8	.350	org.						28
700	.005	7	.080							29
725	.005	5	.145							30
750	.005	14	.055							31
775	.005	5	.630							32
800	.005	9	.130							33
825	.005	2	.175							34
850	.050	4	.100							35
875	.005	3	.340							36
CORNER 1400E 900N	.005	6	.270							37
										38
										39
										40

All reports are the confidential property of clients  
All results are in PPM.

DIGESTION:.....

DETERMINATION:.....

DATE SAMPLES RECEIVED May 23, 1980

DATE REPORTS MAILED June 10, 1980

ASSAYER

DEAN TOYE, B.Sc.  
CHIEF CHEMIST  
CERTIFIED B.C. ASSAYER



To: Knobby Lake Mines Ltd.,

ACME ANALYTICAL LABORATORIES LTD.

Assaying & Trace Analysis

852 E. Hastings St., Vancouver, B. C. V6A 1R6

phone: 253 - 3158

File No. 80-283

Type of Samples Soils

GEOCHEMICAL ASSAY CERTIFICATE

Disposition

23

SAMPLE No.		Au	As	Hg						
CORNER 1400E	925N	.005	24	.080						1
	950	.005	5	.165						2
	975	.005	1	.355	org.					3
	1000	.005	14	.270						4
	1025	.005	62	.365						5
	1050	.005	3	.060						6
	1075	.005	4	.055						7
	1100	.005	1	.070						8
	1125	.005	2	.360	org.					9
	1150	.005	2	.150						10
	1175	.005	46	.370						11
	1200	.005	2	.050						12
	1225	.005	9	.280						13
CORNER 1400E	1250N	.005	2	.130						14
										15
										16
										17
CORNER 1600E	05	.005	2	.165	org.					18
	25	.005	3	.160	org.					19
	50	.005	2	.125	org.					20
	75	.005	3	.125	org.					21
	100	.005	2	.185	org.					22
	125	.005	3	.100	org.					23
	150	.005	2	.200	org.					24
	175	.005	3	.180	org.					25
	200	.005	2	.270						26
	225	.005	1	.290	org.					27
	250	.005	3	.205	org.					28
	275	.005	2	.410	org.					29
	300	.005	6	.060						30
	325	.005	3	.245	org.					31
	350	.005	10	.200						32
	375	.005	3	.305						33
	400	.005	2	.335	org.					34
	425	.005	1	.400	org.					35
	450	.005	3	.220	org.					36
CORNER 1600E	475S	.005	2	.320	org.					37
										38
										39
										40

All reports are the confidential property of clients  
All results are in PPM.

DIGESTION:.....

DETERMINATION:.....

DATE SAMPLES RECEIVED May 23, 1980

DATE REPORTS MAILED June 10, 1980

ASSAYER

DEAN TOYE, B.Sc.  
CHIEF CHEMIST  
CERTIFIED B.C. ASSAYER



To: Knobby Lake Mines Ltd.,

ACME ANALYTICAL LABORATORIES LTD.

Assaying & Trace Analysis

852 E. Hastings St., Vancouver, B. C. V6A 1R6

phone: 253 - 3158

File No. 80-283

Type of Samples Soils

Disposition

GEOCHEMICAL ASSAY CERTIFICATE

24

SAMPLE No.	Au	As	Hg							
CORNER 1600E 500S	.005	2	.335		org.					1
525	.005	5	.330		org.					2
550	.005	2	.345		org.					3
575	.005	6	.130							4
600	.005	2	.340		org.					5
625	.010	8	.130							6
650	.005	7	.170							7
675	.005	13	.120							8
700	.005	4	.165							9
725	.005	13	.105							10
750	.005	1	.200		org.					11
775	.005	2	.150							12
800	.005	3	.400		org.					13
825	.005	3	.305		org.					14
850	.005	1	.665		org.					15
875	.005	1	.220		org.					16
900	.005	4	.235		org.					17
925	.010	2	.200		org.					18
950	.005	2	.265							19
975	.005	4	.265							20
1000	.010	5	.245		org.					21
1025	.005	4	.220		org.					22
1050	.005	5	.260		org.					23
1075	.005	6	.270		org.					24
CORNER 1600E 1100S	.005	4	.215		org.					25
1125	.005	3	.345		org.					26
CORNER 1600E 1150S	.005	3	.335		org.					27
										28
										29
CORNER 1600E ON	.010	4	.230		org.					30
25	.005	5	.150		org.					31
50	.005	2	.240		org.					32
75	.020	5	.165		org.					33
100	.005	4	.220		org.					34
125	.005	2	.165		org.					35
150	.060	2	.230		org.					36
175	.005	4	.130		org.					37
CORNER 1600E 200N	.010	3	.515							38
										39
										40

All reports are the confidential property of clients  
All results are in PPM.

DIGESTION:.....

DETERMINATION:.....

DATE SAMPLES RECEIVED May 23, 1980

DATE REPORTS MAILED June 10, 1980

ASSAYER

DEAN TOYE, B.Sc.  
CHIEF CHEMIST  
CERTIFIED B.C. ASSAYER



To: Knobby Lake Mines Ltd.,

ACME ANALYTICAL LABORATORIES LTD.

Assaying & Trace Analysis

852 E. Hastings St., Vancouver, B. C. V6A 1R6

phone:253 - 3158

File No. 80-283

Type of Samples Soils

Disposition

GEOCHEMICAL ASSAY CERTIFICATE

25

SAMPLE No.	Au	As	Hg							
CORNER 1600E 225N	.005	3	.205					org.		1
250	.005	6	.160					org.		2
275	.005	2	.220					org.		3
300	.005	4	.110					org.		4
325	.005	3	.300					org.		5
350	.005	1	.255					org.		6
375	.005	3	.220					org.		7
400	.005	1	.330					org.		8
425	.005	4	.080					org.		9
450	.005	2	.240					org.		10
475	.005	2	.205					org.		11
500	.005	1	.320					org.		12
525	.005	2	.300					org.		13
550	.005	3	.255	x						14
575	.005	4	.295					org.		15
600	.005	3	.245					org.		16
625	.005	2	.230							17
650	.005	3	.155							18
675	.005	1	.165					org.		19
700	.005	3	.555					org.		20
725	.005	5	.180					org.		21
750	.005	4	.160							22
775	.005	2	.145							23
800	.005	2	.165							24
825	.005	2	.250					org.		25
850	.005	1	.460					org.		26
875	.005	1	.400					org.		27
900	.005	4	.255					org.		28
925	.005	2	.300					org.		29
950	.005	3	.250					org.		30
975	.005	1	.510					org.		31
1000	.005	2	.160					org.		32
1025	.005	1	.315					org.		33
1050	.005	2	.345					org.		34
CORNER 1600E 1075N	.005	2	.285							35
										36
										37
										38
										39
										40

All reports are the confidential property of clients  
All results are in PPM.

DIGESTION:.....

DETERMINATION:.....

DATE SAMPLES RECEIVED May 23, 1980

DATE REPORTS MAILED June 10, 1980

ASSAYER

DEAN TOYE, B.Sc.  
CHIEF CHEMIST  
CERTIFIED B.C. ASSAYER



ACME ANALYTICAL LABORATORIES LTD.

Assaying & Trace Analysis

852 E. Hastings St., Vancouver, B. C. V6A 1R6

phone:253 - 3158

To: Knobby Lake Mines Ltd.,

File No. 80-283

Type of Samples Soils

Disposition

GEOCHEMICAL ASSAY CERTIFICATE

26

SAMPLE No.	Au	As	Hg							
CORNER 1600E 1100N	.005	2	.235					org.		1
1125	.005	1	.180					org.		2
1150	.005	1	.290					org.		3
1175	.005	2	.250					org.		4
1200	.005	3	.565					org.		5
1225	.005	2	.305					org.		6
CORNER 1600E 1250	.005	2	.235					org.		7
										8
										9
										10
										11
CORNER 1800E OS	.005	14	.135							12
25	.005	16	1.450							13
50	.010	10	.550					org.		14
75	.005	70	.240							15
100	.005	24	.255							16
125	.005	69	.190							17
150	.005	11	.335					org.		18
175	.005	15	.570					org.		19
200	.005	12	.560					org.		20
225	.005	59	.195							21
250	.005	25	.325							22
275	.005	19	.285							23
300	.005	54	.230							24
325	.005	7	1.540					org.		25
350	.005	29	.080							26
375	.005	12	.170							27
400	.005	14	.340							28
425	.005	20	.325							29
450	.005	6	.470					org.		30
475	.010	57	.185							31
500	.005	17	.195							32
525	.005	17	1.240					org.		33
550	.005	31	.270							34
575	.005	9	.550					org.		35
600	.005	22	.145							36
CORNER 1800E 625S	.005	9	.475					org.		37
										38
										39
										40

All reports are the confidential property of clients  
All results are in PPM.

DIGESTION:.....

DETERMINATION:.....

DATE SAMPLES RECEIVED May 23 1980

DATE REPORTS MAILED June 10, 1980

ASSAYER

DEAN TOYE, B.Sc.  
CHIEF CHEMIST  
CERTIFIED B.C. ASSAYER



To: Knobby Lake Mines Ltd.

ACME ANALYTICAL LABORATORIES LTD.

Assaying & Trace Analysis

852 E. Hastings St., Vancouver, B. C. V6A 1R6

phone:253 - 3158

File No. 80-283

Type of Samples Soils

Disposition

### GEOCHEMICAL ASSAY CERTIFICATE

27

SAMPLE No.	Au	As	Hg							
CORNER 1800E 650S	.005	9	.325							1
675	.005	10	1.100							2
700	.005	15	.300							3
725	.005	20	.075							4
750	.005	19	.060							5
775	.005	34	.055							6
800	.005	7	.350							7
825	.005	23	.335			org.				8
850	.005	7	.450			org.				9
875	.005	9	1.600							10
900	.005	5	.365							11
925	.005	18	.310							12
950	.005	35	.195							13
975	.005	73	.160							14
1000	.010	17	.875							15
1025	.005	16	.330							16
1050	.005	10	.405			org.				17
1075	.005	16	.385							18
1100	.005	67	.205							19
1125	.005	19	1.450			org.				20
1150	.005	9	1.210			org.				21
1175	.005	43	.245							22
CORNER 1800E 1200S	.005	16	.175							23
										24
										25
										26
										27
CORNER 1800E ON	.005	2	.200			org.				28
25	.005	2	.190			org.				29
50	.005	20	.140							30
75	.005	18	.310							31
100	.005	8	.270							32
125	.005	4	.330			org.				33
150	.005	7	.110							34
175	.005	18	.150							35
CORNER 1800E 200N	.005	16	.170							36
										37
										38
										39
										40

All reports are the confidential property of clients  
All results are in PPM.

DIGESTION:.....

DETERMINATION:.....

DATE SAMPLES RECEIVED May 23, 1980

DATE REPORTS MAILED June 10, 1980

ASSAYER

DEAN TOYE, B.Sc.  
CHIEF CHEMIST  
CERTIFIED B.C. ASSAYER



To: Knobby Lake Mines Ltd.,

ACME ANALYTICAL LABORATORIES LTD.

Assaying & Trace Analysis

852 E. Hastings St., Vancouver, B. C. V6A 1R6

phone:253 - 3158

File No. 80-283

Type of Samples Soils

Disposition

GEOCHEMICAL ASSAY CERTIFICATE

28

SAMPLE No.	Au	As	Hg							
CORNER 1800E 225N	.005	1	.200							1
250	.005	22	.205							2
275	.005	1	.170							3
300	.005	15	.135							4
325	.005	18	.120							5
350	.005	15	.170							6
375	.005	18	.320							7
400	.005	3	.195							8
425	.005	30	.145							9
450	.005	23	.155							10
475	.005	8	.170							11
500	.005	30	.150							12
525	.005	20	.140							13
550	.005	5	.180							14
575	.005	11	.100							15
600	.005	25	.430							16
625	.005	③	.275	x		org.				17
650	.005	9	.150							18
675	.005	16	.220							19
700	.005	②	.240	x		org.				20
725	.005	20	.200							21
750	.005	12	.100							22
775	.005	28	.175							23
800	.005	16	.135							24
825	.010	18	.150							25
850	.005	20	.100							26
875	.005	5	.110							27
900	.020	2	.200							28
925	.005	14	.265							29
950	.010	7	.220							30
975	.005	22	.175							31
1000	.005	4	.110							32
1025	.005	26	.170							33
CORNER 1800E 1050N	.005	12	.165							34
										35
										36
										37
										38
										39
										40

All reports are the confidential property of clients  
All results are in PPM.

DIGESTION:.....

DETERMINATION:.....

DATE SAMPLES RECEIVED May 23, 1980

DATE REPORTS MAILED June 10, 1980

ASSAYER

DEAN TOYE, B.Sc.  
CHIEF CHEMIST  
CERTIFIED B.C. ASSAYER





To: Knobby Lake Mines Ltd.,

ACME ANALYTICAL LABORATORIES LTD.

Assaying & Trace Analysis

852 E. Hastings St., Vancouver, B. C. V6A 1R6

phone:253 - 3158

File No. 80-283

Type of Samples Soils

Disposition

GEOCHEMICAL ASSAY CERTIFICATE

SAMPLE No.	Au	As	Hg							
CORNER 1800E 1075N	.010	20	.285							1
1100	.005	4	.135							2
1125	.005	2	.140							3
1150	.005	19	.330							4
1175	.005	27	.115							5
1200	.005	13	.100							6
1225	.005	4	.150							7
CORNER 1800E 1250N	.010	5	.210							8
										9
										10
										11
CORNER 2000E OS	.005	11	.515							12
25	.005	26	.175							13
50	.020	(6)	.450	org.						14
75	.005	36	.165							15
100	.005	12	.475							16
125	.010	20	.200							17
150	.010	65	.190							18
175	.010	22	1.520							19
200	.005	24	.230							20
225	.005	55	.160							21
250	.005	24	.210							22
275	.005	66	.175							23
300	.005	15	1.120							24
325	.005	66	.160							25
350	.005	15	.550							26
375	.005	15	.280							27
400	.010	5	1.060							28
425	.005	5	.535							29
450	.005	10	.255							30
475	.010	17	.710							31
500	.005	55	.195							32
525	.005	28	.275							33
550	.005	(10)	.400	org.						34
575	.005	12	1.240							35
CORNER 2000E 600S	.005	6	.450							36
										37
										38
										39
										40

All reports are the confidential property of clients. All results are in PPM.

DIGESTION:.....

DETERMINATION:.....

DATE SAMPLES RECEIVED May 23, 1980

DATE REPORTS MAILED June 10, 1980

ASSAYER [Signature]

DEAN TOYE, B.Sc. CHIEF CHEMIST CERTIFIED B.C. ASSAYER



To: Knobby Lake Mines Ltd.,

ACME ANALYTICAL LABORATORIES LTD.

Assaying & Trace Analysis

852 E. Hastings St., Vancouver, B. C. V6A 1R6

phone: 253 - 3158

80-283

File No. -----

Type of Samples Soil

Disposition -----

**GEOCHEMICAL ASSAY CERTIFICATE**

30

SAMPLE No.	Au	As	Hg						
CORNER 2000E 625S	.005	16	.405						1
650	.005	22	.395						2
675	.005	20	1.260						3
700	.010	35	.245						4
725	.005	13	.465						5
750	.005	14	.375	org.					6
775	.005	11	.360						7
800	.005	12	1.040						8
825	.005	80	.195						9
850	.005	4	.510						10
875	.005	9	.540						11
900	.010	12	.165	org.					12
925	.010	28	1.100	org.					13
950	.005	73	.210						14
975	.005	80	.220						15
1000	.005	3	.195	org.					16
1025	.005	5	.270						17
1050	.005	10	.245						18
1075	.005	20	.255						19
CORNER 2000E 1100S	.005	24	.250						20
									21
									22
									23
									24
CORNER 2000E ON	.010	5	.110	org.					25
25	.005	3	.155	org.					26
50	.005	60	.210						27
75	.005	2	.200	org.					28
100	.005	24	.400						29
125	.005	5	.585						30
150	.005	4	.570						31
175	.005	20	.535						32
200	.005	4	.250	org.					33
225	.005	12	.745						34
250	.005	3	.510	org.					35
275	.005	15	.275	org.					36
300	.010	10	.360						37
CORNER 2000E 325N	.005	5	.270	org.					38
									39
									40

All reports are the confidential property of clients  
All results are in PPM.

DIGESTION:.....

DETERMINATION:.....

DATE SAMPLES RECEIVED May 23, 1980

DATE REPORTS MAILED June 10, 1980

ASSAYER

DEAN TOYE, B.Sc.  
CHIEF CHEMIST  
CERTIFIED B.C. ASSAYER



To: Kobby Lake Mines Ltd.,

ACME ANALYTICAL LABORATORIES LTD.

Assaying & Trace Analysis

852 E. Hastings St., Vancouver, B. C. V6A 1R6

phone: 253 - 3158

File No. 80-283

Type of Samples Soils

Disposition

GEOCHEMICAL ASSAY CERTIFICATE

31

SAMPLE No.	Au	As	Hg								
CORNER 2000E 350N	.005	9	.310							org.	1
375	.005	50	.220								2
400	.005	14	.325								3
425	.005	6	.530							org.	4
450	.005	24	.210								5
475	.005	17	.200								6
500	.005	5	.670							org.	7
525	.005	10	.420							org.	8
550	.005	5	.550							org.	9
575	.005	2	.165							org.	10
600	.005	1	.090							org.	11
625	.005	54	.210								12
650	.005	8	.600							org.	13
675	.005	19	.485							org.	14
700	.005	4	.505							org.	15
725	.005	5	.495							org.	16
750	.005	24	.280								17
775	.005	20	.415								18
800	.005	30	.250								19
825	.005	59	.210								20
850	.005	10	.385							org.	21
875	.005	2	.345							org.	22
900	.005	25	.105							org.	23
925	.005	3	.135							org.	24
950	.005	2	.550							org.	25
975	.005	5	.710							org.	26
1000	.005	2	.345							org.	27
1025	.005	13	.135								28
1050	.005	2	.195							org.	29
1075	.005	20	.220								30
1100	.005	55	.180								31
1125	.005	24	.395								32
1150	.005	21	.275								33
1175	.005	26	.300								34
1200	.005	2	.120							org.	35
1225	.005	2	.145							org.	36
CORNER 2000E 1250N	.005	9	.210							org.	37
											38
											39
											40

All reports are the confidential property of clients  
All results are in PPM.

DIGESTION:.....

DETERMINATION:.....

DATE SAMPLES RECEIVED May 23, 1980

DATE REPORTS MAILED June 10, 1980

ASSAYER

DEAN TOYE, B.Sc.  
CHIEF CHEMIST  
CERTIFIED B.C. ASSAYER

ACME ANALYTICAL LABORATORIES LTD.  
ASSAYERS & CHEMISTS  
6455 LAUREL STREET, BURNABY 2, B.C.  
Telephone (604) 299-5242

Geochemical Analysis of Mo, Cu, Pb, Zn, Ag\*, Ni, Co,  
Mn, Bi\*, V, Fe, Cd\*, & Sb\*

Sample preparation

Soil samples are dried at 75°C and sieved to -80 mesh.  
Rock samples are ground to -100 mesh.

Digestion

A .50 gram sample is digested with dilute aqua regia in boiling water bath and diluted to 10 mls with demineralized water.

Determination

All the above elements are determined by Atomic Absorption from the solution.  
\* With background correction.

Geochemical Analysis of Au

Digestion and extraction

A 10 gram sample which has been ignited over night at 600°C is digested hot with dilute aqua regia, and the clear solution is extracted with Methyl Isobutyl Ketone.

Determination

Au is determined by AA from the MIBK extractant with background correction.

Geochemical Analysis of Ba

A .100 gram sample is digested hot with NaOH and EDTA solution. The solution is analysis for Ba by AA.

Geochemical Uranium Analysis

Digestion

A .50 gram sample is digested hot with nitric and perchloric acid and diluted to 10 mls.

Fusion

An aliquot is solvent extracted with salting agent and aliquot of is fused with NaF, K<sub>2</sub>CO<sub>3</sub>, & Na<sub>2</sub>CO<sub>3</sub> flux in platinum dish.

Determination

The fluorescence of the pellet is read in the Turner fluorometer.

Geochemical Analysis for Tungsten

A 1.00 gram sample is fused with  $KCl$ ,  $KNO_3$ , &  $Na_2CO_3$  flux in a test-tube, is leached with 10.0 mls water. An aliquot is used to develop a complex with  $SnCl_2$ ,  $KSCN$  and  $HCl$  which is extracted by n-tributylphosphate and carbon tetrachloride.

Geochemical Analysis for Fluorine

A .25 gram sample is fused with sodium hydroxide and is leached with water. The solution neutralized, buffered and adjusted to pH 7.8 and diluted to 100 mls. Fluorine is determined by specific ion electrode with specific ion meter, Orion Model 404.

Geochemical Analysis for Tin

A 1.0 gram sample is fused with ammonium iodide in a test-tube. The decomposed iodine is leached with dilute hydrochloric acid; an aliquot is use for colorimetric development with gallein in a buffered solution.

Geochemical Analysis for Platinum

A 10 gram sample is digested with aqua regia to dryness. An aliquot of  $HCl$  leached solution is reduced by stannous chloride and extracted into MIBK. The extracted Pt is determined by AA with background correction.

Geochemical Analysis of As

Digestion

A .50 gram digested hot with 5 mls of 50%  $HCl$ , and then diluted to 10 mls.

Determination

The As is evolved from solution of  $KI$ ,  $SnCl_2$  by Zn metal into  $AgDDC$  solution which is read colorimetrically.

ACME ANALYTICAL LABORATORIES LTD.  
ASSAYERS & CHEMISTS  
6455 LAUREL STREET, BURNABY 2, B.C.  
Telephone (604) 299-5242

### Geochemical Analysis of Hg

#### Digestion

A .50 gram sample is digested with nitric and perchloric acid and diluted with 20% HCl.

#### Determination

Hg is determined by cold vapour AA using F & J scientific Hg assembly. An aliquot is added to stannous chloride-hydrochloric acid solution. The reduced Hg is carried by bubbling air through the solution and passed into the Hg cell determined by AA.

#### Oxalic Acid Leach of Rock, Soil & Silt Samples

A .50 gram sample is digested hot with 10 mls 5% oxalic acid solution. The oxalic acid will dissolve Fe and Mn from their oxidized M - 1 fraction (but not from magnetite & ilmenite) limonites and clays. The following metals are analysed by atomic absorption: Cu, Zn, Pb, Ni, Mo, Fe, & Mn.

#### Cold HCl Acid Extraction

A .50 gram sample is leached at room temperature for 2 hours with occasional shaking with 10 mls 5% HCl solution. This will dissolve Cu from the organic and surface of clay fractions.

#### EDTA Extraction

A .50 gram sample is leached at room temperature for 4 hours with 10 mls of 2.5% EDTA solution.

CORE & ROCK ASSAYS SOIL, ROCK & WATER GEOCHEM ANALYSIS  
ACME ANALYTICAL LABORATORIES, LTD.

MAIN LAB - 6455 LAUREL ST.  
BURNABY, B.C. V5B 3B4  
(604) 299-5242

ROSS RIVER - YUKON - (403) 969-2217

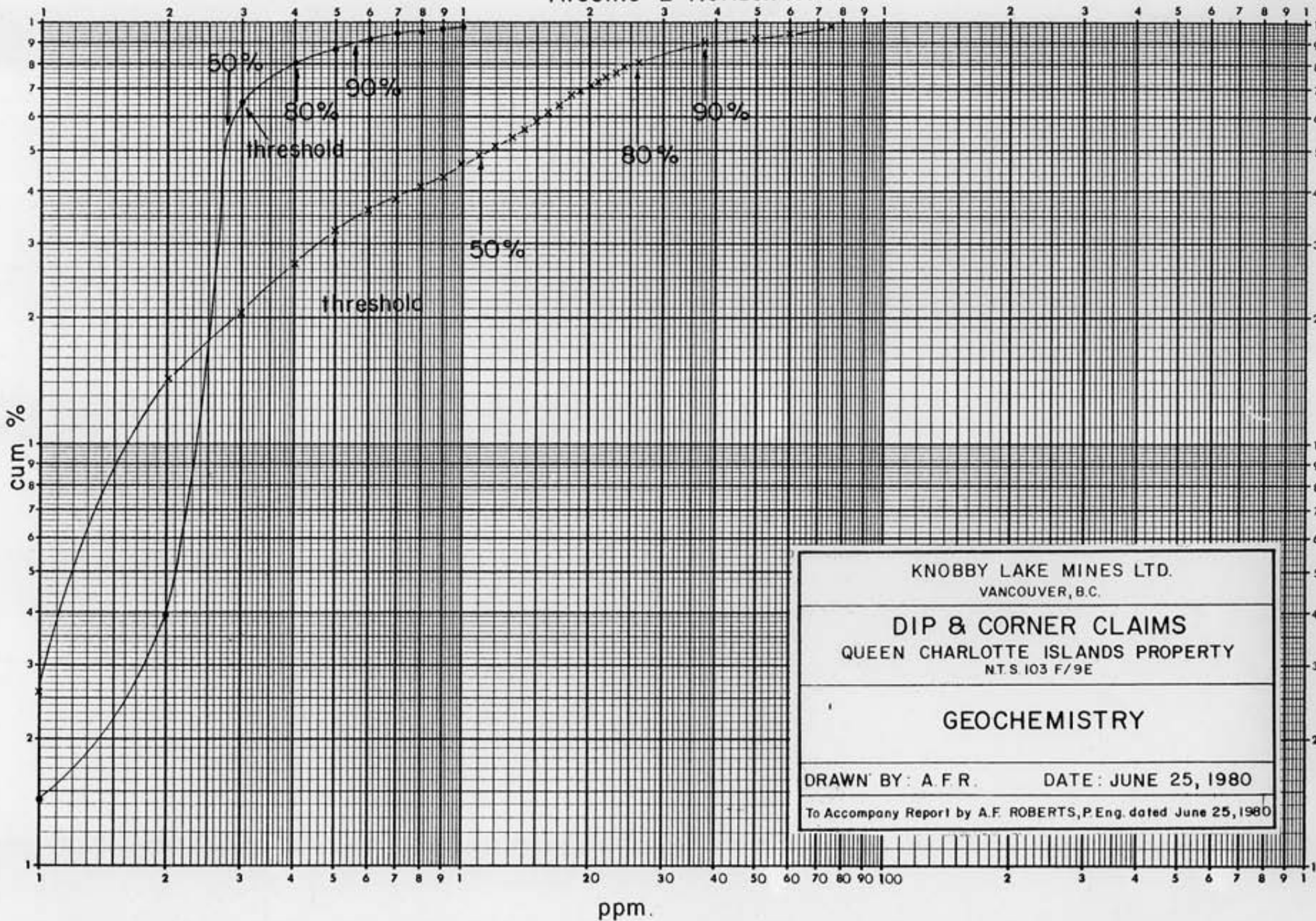
DEAN TOYE, B.Sc.  
CHIEF CHEMIST, CERTIFIED B.C. ASSAYER  
HOME PHONE 438-7672

APPENDIX B

FREQUENCY, PROBABILITY CURVES

MERCURY, ARSENIC

Knobby Lake - Arsenic "A" Horizon ..... •  
Arsenic "B" Horizon ..... x



KNobby LAKE MINES LTD.  
VANCOUVER, B.C.

DIP & CORNER CLAIMS  
QUEEN CHARLOTTE ISLANDS PROPERTY  
NTS 103 F/9E

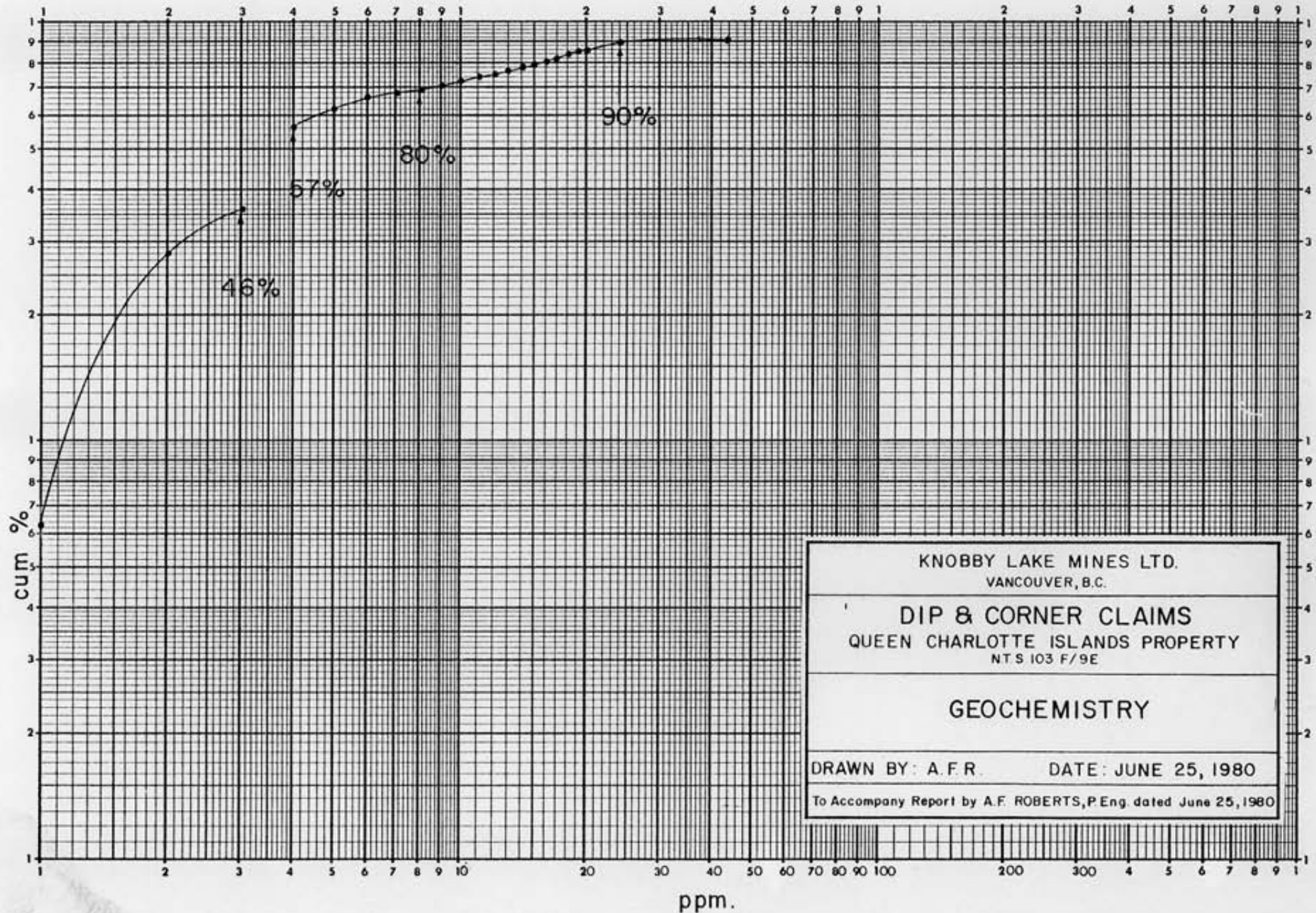
GEOCHEMISTRY

DRAWN BY: A.F.R.      DATE: JUNE 25, 1980

To Accompany Report by A.F. ROBERTS, P.Eng. dated June 25, 1980



### Knobby Lake - ARSENIC 1081 Samples



KNobby LAKE MINES LTD.  
VANCOUVER, B.C.

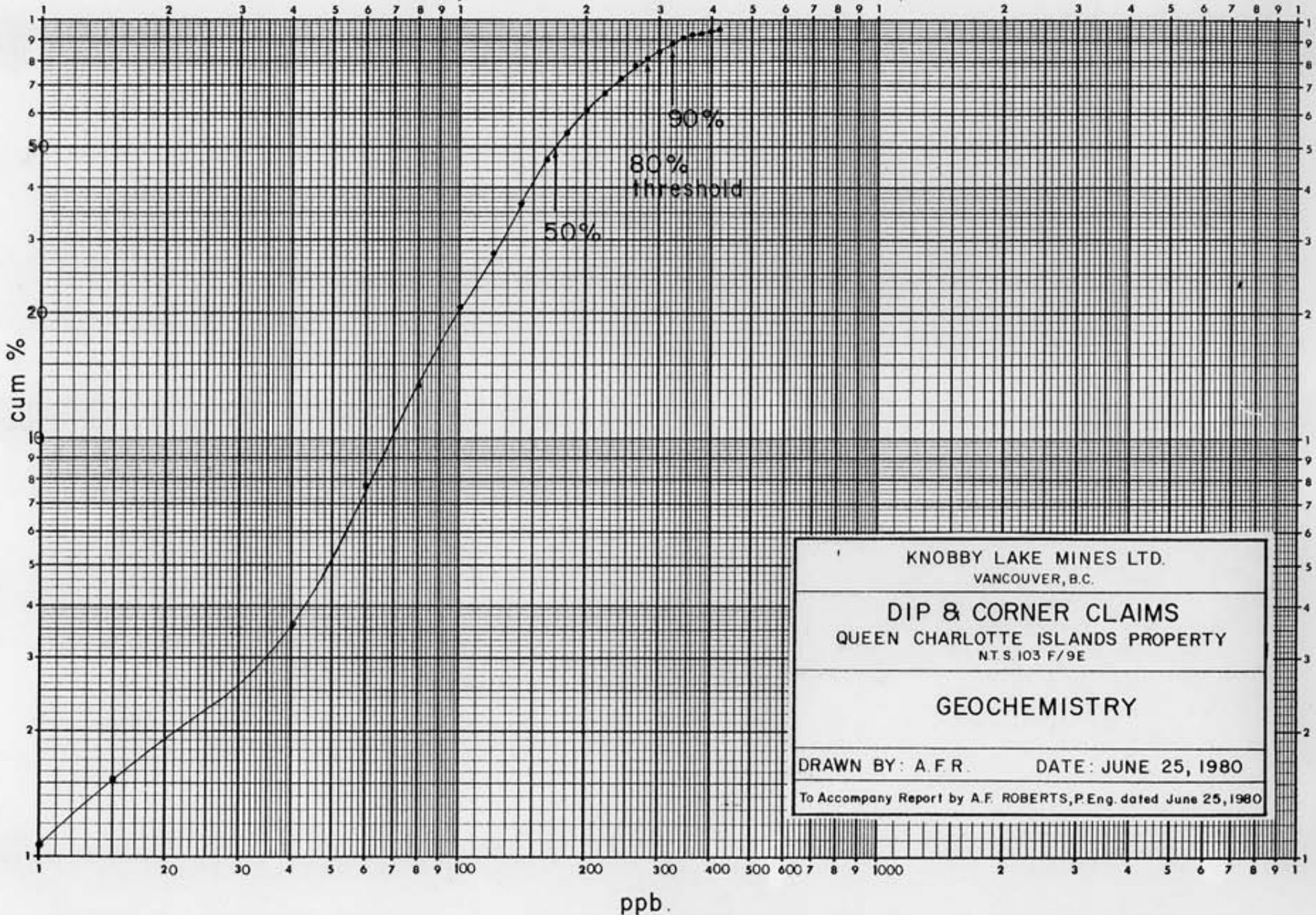
DIP & CORNER CLAIMS  
QUEEN CHARLOTTE ISLANDS PROPERTY  
NTS 103 F/9E

GEOCHEMISTRY

DRAWN BY: A.F.R.      DATE: JUNE 25, 1980

To Accompany Report by A.F. ROBERTS, P.Eng. dated June 25, 1980

Knobby Lake - MERCURY 1081 Samples



KNobby LAKE MINES LTD.  
VANCOUVER, B.C.

DIP & CORNER CLAIMS  
QUEEN CHARLOTTE ISLANDS PROPERTY  
NT S 103 F/9E

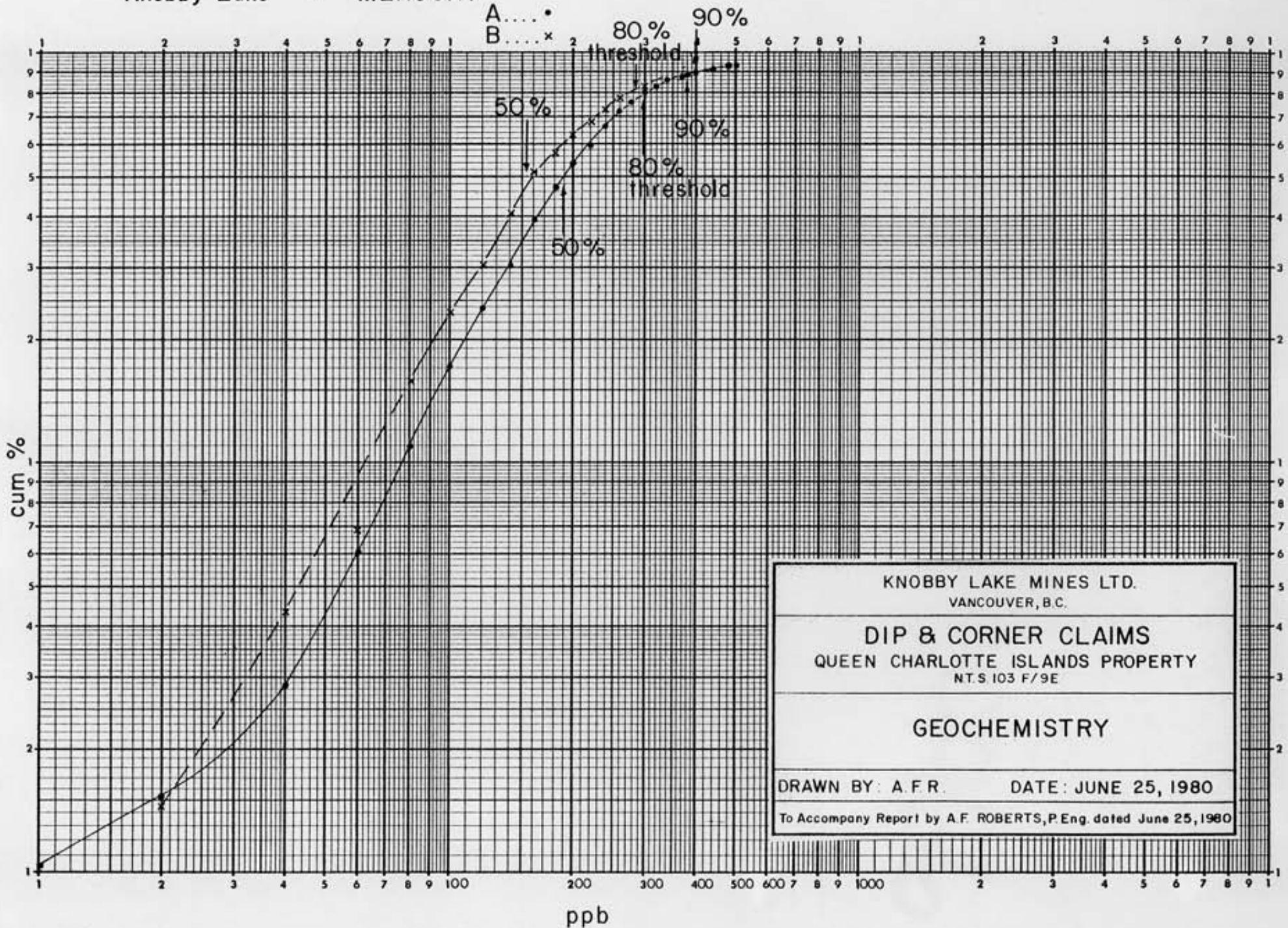
GEOCHEMISTRY

DRAWN BY: A. F. R.      DATE: JUNE 25, 1980

To Accompany Report by A.F. ROBERTS, P.Eng. dated June 25, 1980



# Knobby Lake - MERCURY



KNobby LAKE MINES LTD.  
VANCOUVER, B.C.

DIP & CORNER CLAIMS  
QUEEN CHARLOTTE ISLANDS PROPERTY  
N.T.S 103 F/9E

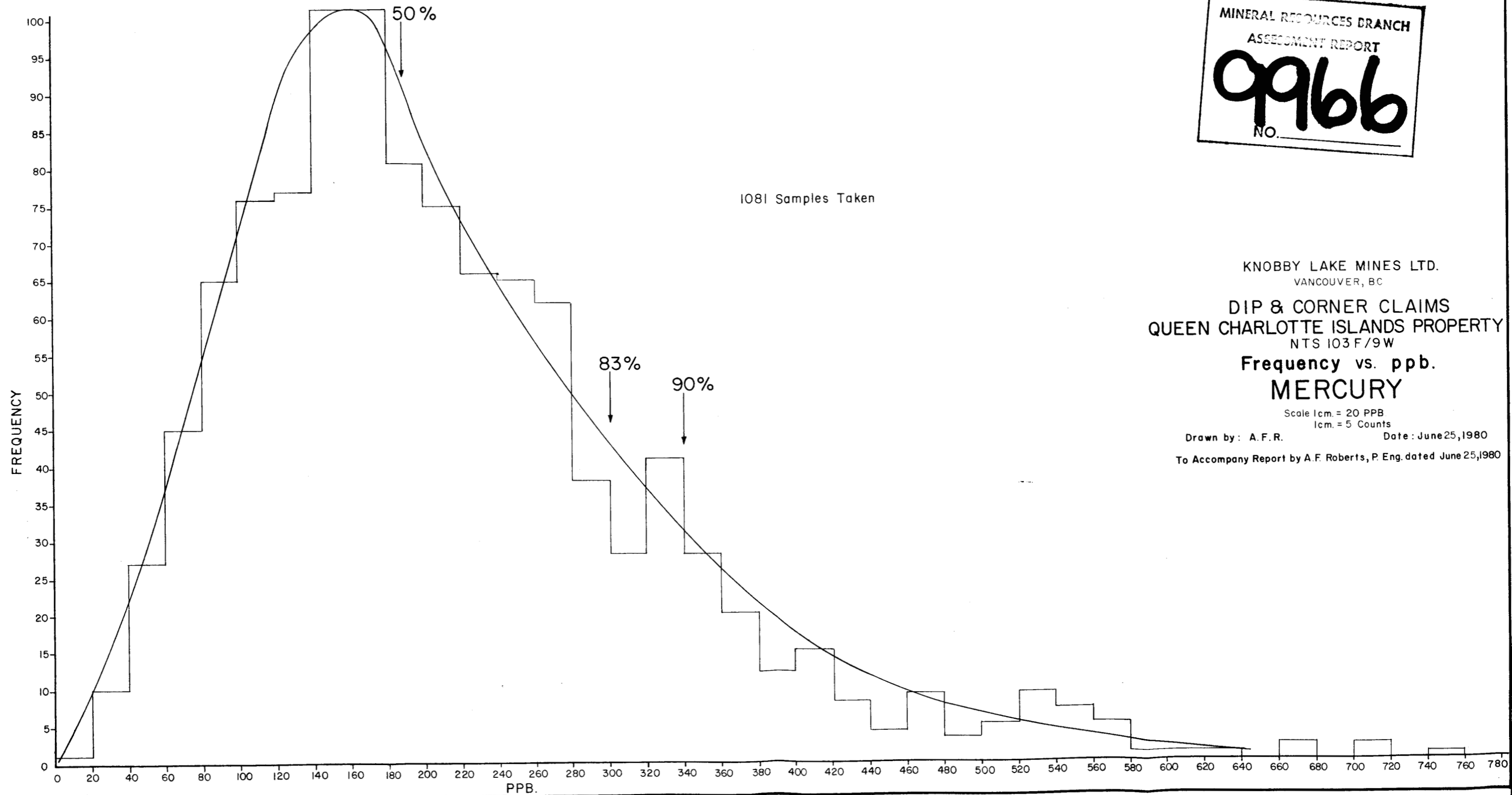
GEOCHEMISTRY

DRAWN BY: A.F.R.      DATE: JUNE 25, 1980

To Accompany Report by A.F. ROBERTS, P.Eng. dated June 25, 1980

MINERAL RESOURCES BRANCH  
ASSESSMENT REPORT  
**9966**  
NO.

1081 Samples Taken



KNobby LAKE MINES LTD.  
VANCOUVER, BC

DIP & CORNER CLAIMS  
QUEEN CHARLOTTE ISLANDS PROPERTY  
NTS 103 F/9W

Frequency vs. ppb.  
**MERCURY**

Scale 1cm. = 20 PPB  
1cm. = 5 Counts

Drawn by: A.F.R.

Date: June 25, 1980

To Accompany Report by A.F. Roberts, P. Eng. dated June 25, 1980

APPENDIX "E2"

Contract Analysis

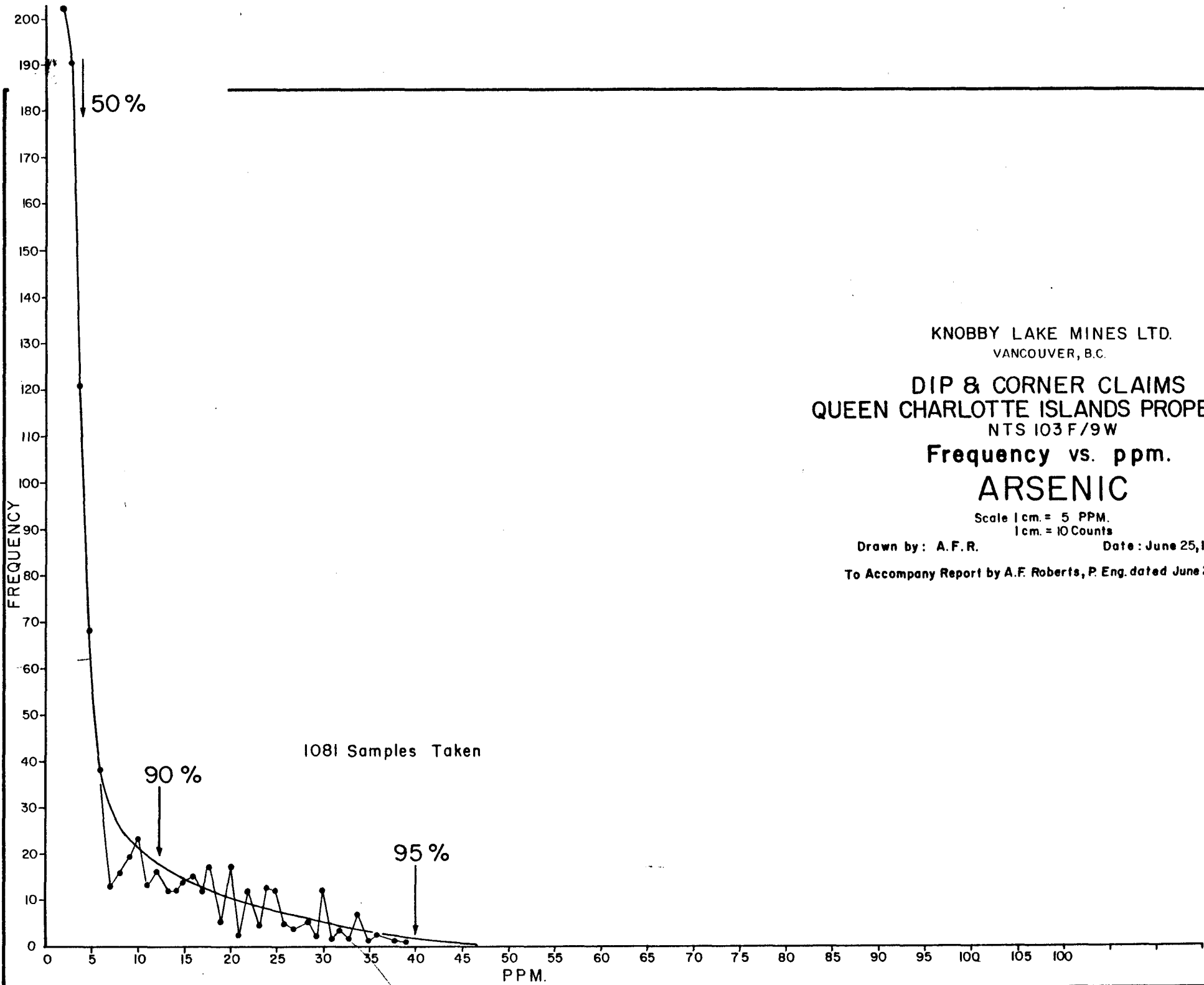
<u>Employer</u>	<u>Claim Group</u>	<u>No. of Units</u>	<u>Contract Amount</u>	<u>Assays paid by Employer</u>	<u>Other Costs Paid by Employer *</u>	<u>Total Assessable Work</u>
Calabrigo	Bridge	110	\$ 8,689.70	\$ 2,310.30	\$ 100.00 <sup>(3)</sup>	\$ 11,100.00
Ashcroft	Golden	76	17,000.00	4,279.05	2,000.00 <sup>(3)</sup>	23,279.05
Calabrigo	MB	240	20,131.80	3,868.20	100.00 <sup>(3)</sup>	24,100.00
Ventura	MB	80	6,500.00	1,238.40	1,000.00 <sup>(3)</sup>	8,738.40
R. Dion	Easy	20	1,595.00	405.00	50.00 <sup>(3)</sup>	2,050.00
Alexander	DH	40	3,254.80	745.20	100.00 <sup>(3)</sup>	4,050.00
Black Diamond	FLY	40	3,000.00	763.20	567.00 <sup>(2)</sup>	4,330.20
Southern Union	FLY 6	20	1,625.00		400.00 <sup>(1)</sup>	2,025.00
Knobby Lake	Dip & Corner	35	3,000.00	542.16		3,542.16
Foremost Energy	Survey	120	9,480.00	2,520.00	100.00 <sup>(3)</sup>	12,100.00
R. Dion	(GCS, GCN ) (YAKI-3 ) (BET, ) (GOLDBIT )	79	<u>4,740.00</u>	<u>          </u>	<u>          </u>	<u>4,740.00</u>
			\$79,016.30	\$16,671.51	\$4,367.00	\$100,054.81

- \* (1) Cash in Lieu  
 (2) Helicopters Costs, or  
 (3) Engineering Reports (estimated)

NOTE: The Contractor's Cost Figure \$79,004.00 (from Appendix A) = 99.98% of total of contract prices above.

Therefore, for all practical purposes, the pro-rated cost of each contract performed is equal to the contract price paid by each employer to the contractor.

The Contracts were originally accepted on terms of cost plus 25% but field conditions and resulting performance were so poor that the contracts resulted in "break-even" operations.



KNOBBY LAKE MINES LTD.  
VANCOUVER, B.C.

DIP & CORNER CLAIMS  
QUEEN CHARLOTTE ISLANDS PROPERTY  
NTS 103 F/9W

Frequency vs. ppm.

ARSENIC

Scale 1 cm. = 5 PPM.  
1 cm. = 10 Counts

Drawn by: A.F.R.

Date: June 25, 1980

To Accompany Report by A.F. Roberts, P. Eng. dated June 25, 1980

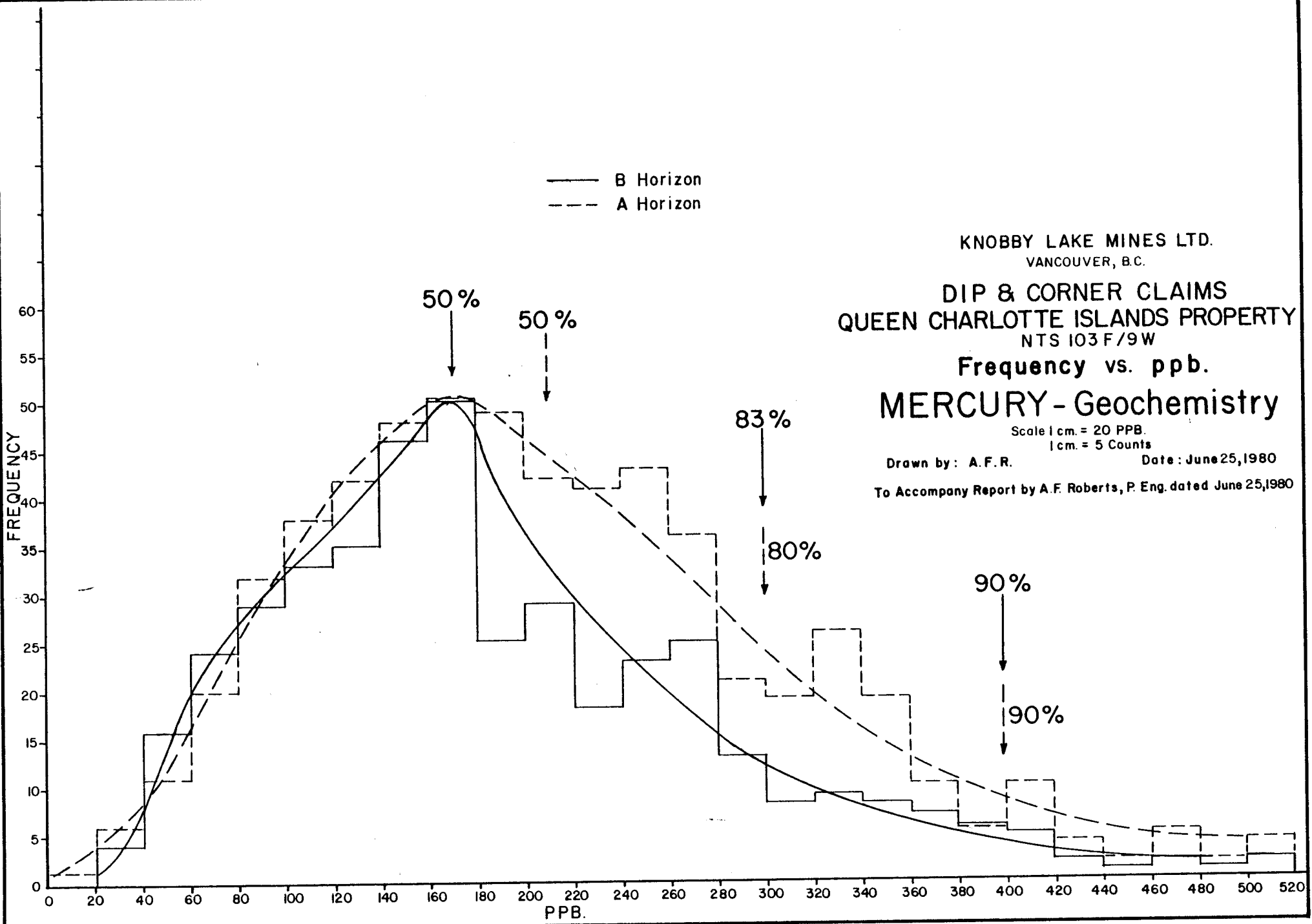
— B Horizon  
- - - A Horizon

NOBBY LAKE MINES LTD.  
VANCOUVER, B.C.  
DIP & CORNER CLAIMS  
QUEEN CHARLOTTE ISLANDS PROPERTY  
NTS 103 F/9 W  
Frequency vs. ppb.  
MERCURY - Geochemistry

Scale 1 cm. = 20 PPB.  
1 cm. = 5 Counts

Drawn by: A.F.R. Date: June 25, 1980

To Accompany Report by A.F. Roberts, P. Eng. dated June 25, 1980



STATEMENT OF ASSESSMENT COSTS  
FROM COMPANY RECORDS

Geochemical Surveys, Team Mineral Services	\$ 3,500.00
Assaying, Acme Analytical Laboratories Ltd.	11,858.00
Engineer's Report, A.F. Roberts, P.Eng.	<u>3,870.43</u>
	<u>\$19,228.43</u>

Note: Due to a misunderstanding between the Company and the Engineer, reports were not filed when they were ready.



A.F. Roberts, P. Eng.





# KNOBBY LAKE MINES LIMITED

807 - 543 GRANVILLE STREET,  
VANCOUVER, B.C. V6C 1X8

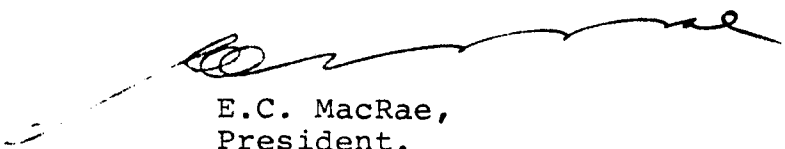
Listed: Vancouver Stock Exchange  
Ticker Symbol: KBL  
Telephone: (604) 669-6232

October 22nd, 1980

## STATEMENT OF WORK DONE ON CORNER CLAIMS 1980

Engineers reports - A.F. Roberts	\$ 7,978.28
Establish baseline and collect 1078 soil samples- Team Mineral Services Ltd.	11,858.00
Cost of assays 1078 soil samples- Acme Analytical Laboratories Ltd.	9,024.30
Cost of VLF-EM Survey- Team Mineral Services Ltd.	<u>22,962.50</u>
Total	<u>\$51,823.08.</u>

Certified correct.

  
E.C. MacRae,  
President.

F.M.L.  
203114

APPENDIX "E1"

Contractor's Cost Analysis  
(from the books of account of Team Mineral Services Inc.)

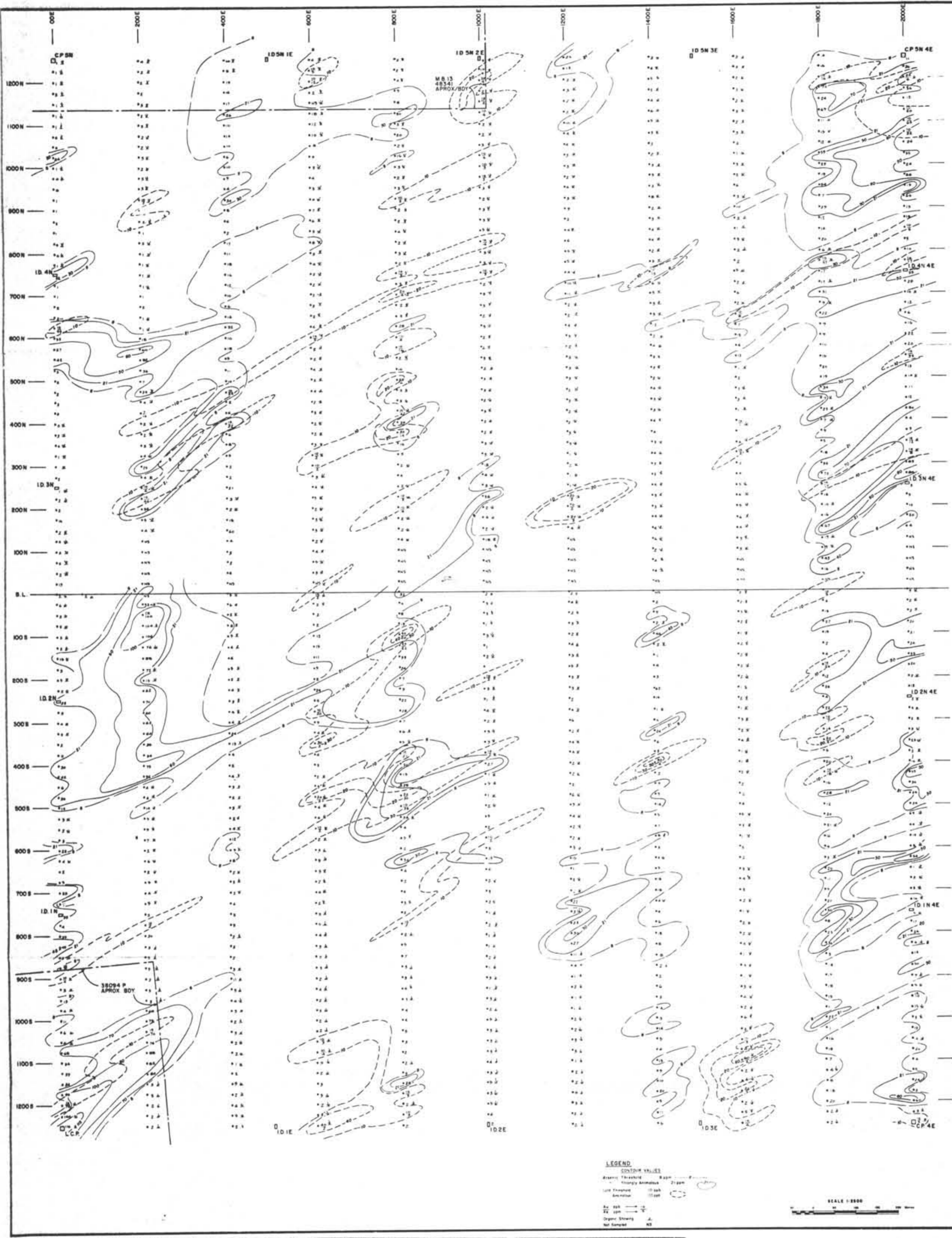
PART I Payroll Analysis (September - December, 1979 inclusive)

<u>Employee</u>	<u>Gross Wages (Days Worked)</u>				<u>Totals</u>
	<u>September</u>	<u>October</u>	<u>November</u>	<u>December</u>	
Dion, R.	\$1500(10)	\$1500(10)	\$1500(10)	\$1500(10)	\$6000(40)
Hunchuk, D.	2000(20)	1500(15)	2000(20)	2000(20)	7500(75)
MacRae, B.	1200(20)	900(15)	1200(20)	1800(30)	5100(85)
Kolesar, T.		1100(20)	1200(20)	780(13)	3080(53)
Degontiere, R.		500(10)	1200(20)	780(13)	2480(43)
Meyerhoff, M.		500(10)	1200(20)	780(13)	2480(43)
Kirkwood, W.		500(10)	1200(20)	780(13)	2480(43)
Neufeld, T.		500(10)	1200(20)		1700(30)
Montrose, A.		600(10)	600(10)		1200(20)
Croft, T.		600(10)	1200(20)		1800(30)
Harper, S.				1000(20)	<u>1000(20)</u>
					\$34820(482)

PART II Total Cost Analysis

Payroll (as above)	\$34,820
Holiday pay, U.I.C., CPP, WCB @ 20%	<u>6,964</u>
Sub-total	41,784
Room & Board @ \$40/man/day	19,280
Air fares and excess baggage	3,940
Fuel, Insurance, Engineering supplies and miscellaneous costs (estimated)	4,600
Truck Rentals	8,400
Typing, Drafting and Maps	<u>1,000</u>
	<u>\$79,004</u>

0960

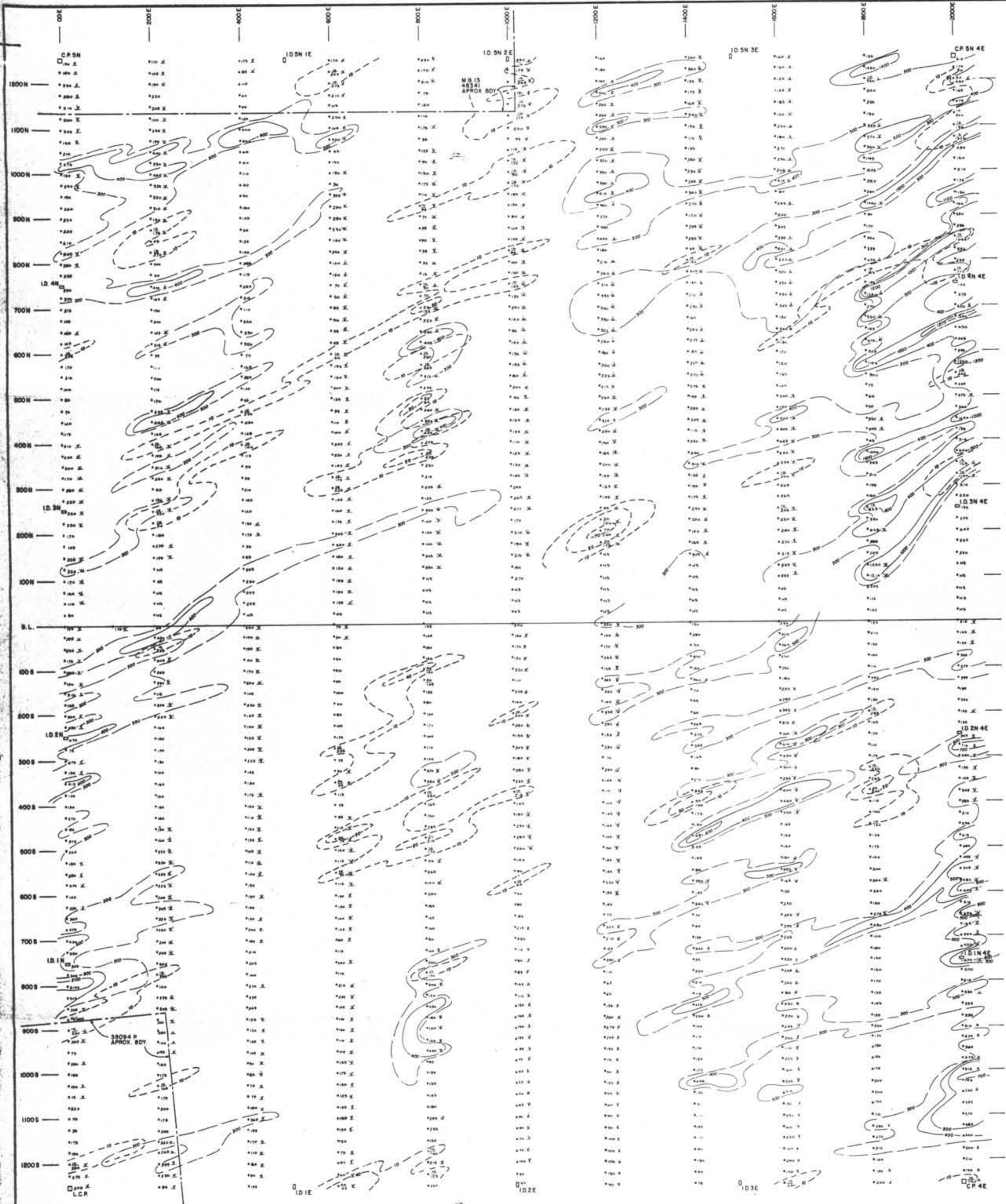


KNobby LAKE MINES LTD  
 VANCOUVER, BC  
 DIP & CORNER CLAIMS  
 QUEEN CHARLOTTE ISLANDS PROPERTY  
 N.T.S. 483 P. 98  
**GEOCHEMISTRY**  
**GOLD, ARSENIC**  
 DRAWN BY: J.P.P. DATE: JUNE 25, 1980  
 To Appraisal Report by A.F. ROBERTS, P.Eng. dated JUNE 25, 1980

9966



0000



**LEGEND**

CONTOUR VALUES

Mercury Threshold 500ppb ——— 500

Asbestos 400ppb ——— 400

SO<sub>2</sub> Threshold 20ppb ——— 20

Asbestos 20ppb ——— 20

As 400 ——— 400

Ag 200 ——— 200

Optical Shading

Not Shaded



KNobby LAKE MINES LTD  
VANCOUVER, BC

DIP & CORNER CLAIMS  
QUEEN CHARLOTTE ISLANDS PROPERTY  
N12 013728E

**GEOCHEMISTRY  
GOLD, MERCURY**

DRAWN BY: A.T.S. DATE: JUNE 29, 1988

To Assesment Report by A.P. ROBERTS, P.Eng. dated JUNE 29, 1988