

PROSPECTING REPORT
ON
THE RACHEL PROPERTY
NELSON MINING DIVISION

Latitude 49° 18' N; Longitude 117° 27' W
N.T.S. Map Sheet 82F/6

For
Kimberley Gold Resources Inc.

By
Jay W. Page, B.A.

D.G. Leighton & Associates Ltd.

21 October, 1981

CONTENTS

	<u>Page</u>
INTRODUCTION	
GENERAL	
Location and Access	2
History	2
Claims	2
PROPERTY WORK	3
SAMPLE RESULTS	
Surface Veins	5
Adit	6
DISCUSSION OF RESULTS	7
RECOMMENDATIONS	8
BREAKDOWN OF COSTS	9
CERTIFICATION	10
APPENDIX	
Sample Results	

ILLUSTRATIONS

Figure 1	Claim Location Map	Follows Page 2
Figure 2	Geology Map	Pocket
Figure 3	Soil Sample Map	Pocket

D. G. LEIGHTON & ASSOCIATES LTD.
GEOLOGICAL CONSULTANTS

GENERAL OFFICE:
101 - 1687 West Broadway,
Vancouver, B.C. V6J 1X2
Telephone (604) 734-7711

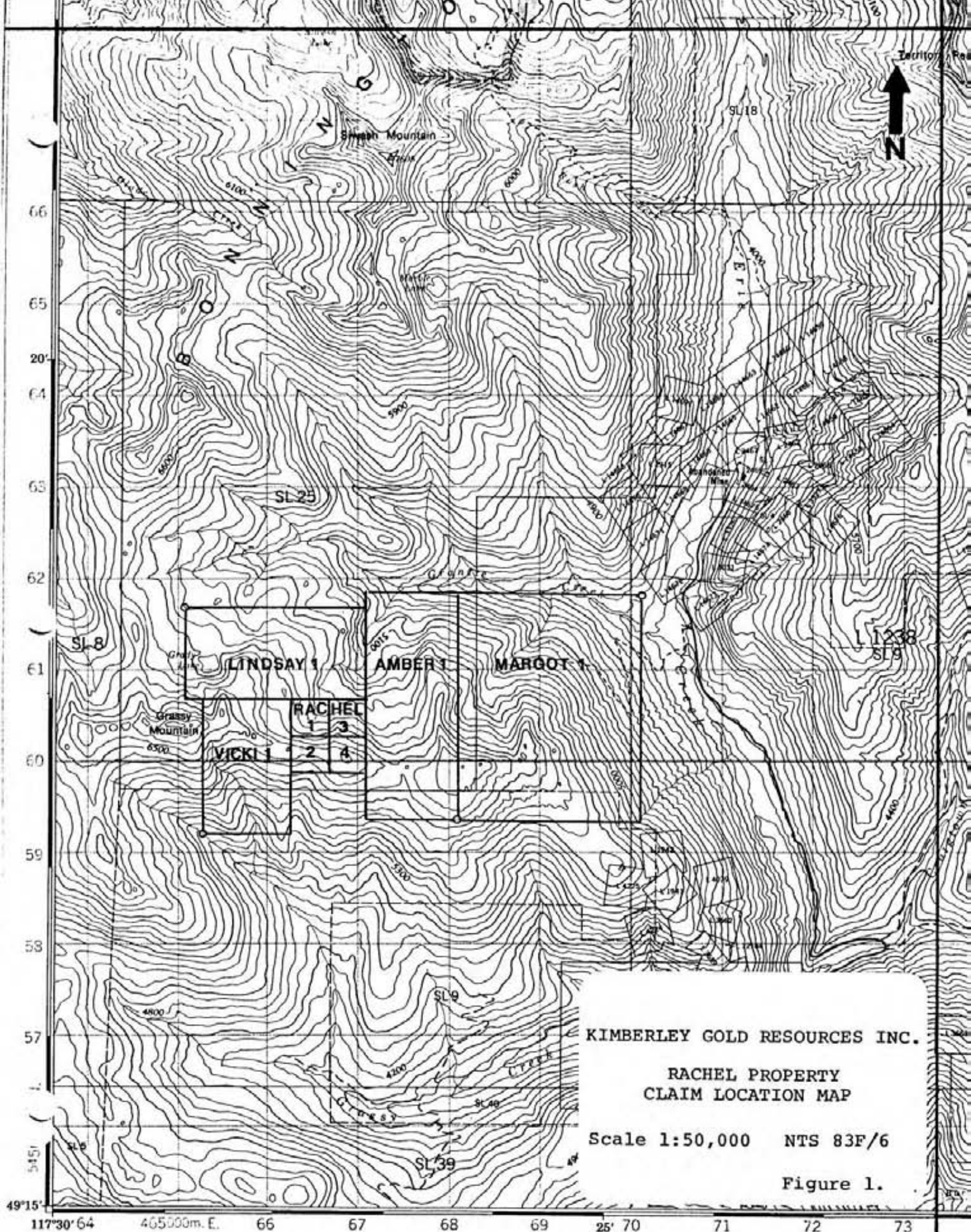
ENGINEERING:
3155 West 12th Avenue,
Vancouver, B.C. V6K 2R6
Telephone (604) 731-7367

RACHEL PROPERTY

SALMO, B.C.

INTRODUCTION

The RACHEL property is comprised of 52 claim units owned by Kimberley Gold Resources Inc. located near Salmo, B.C. The claims were evaluated by a two man prospecting team during the latter half of August. Work consisted of prospecting, geological mapping, sampling, and a VLF-EM survey. Results of this work are summarized in this report, together with recommendations for follow-up drilling.



KIMBERLEY GOLD RESOURCES INC.

RACHEL PROPERTY
CLAIM LOCATION MAP

Scale 1:50,000 NTS 83F/6

Figure 1.

GENERALLocation and Access

The Rachel property is located in the Nelson Mining District, approximately 24 miles southwest of Nelson, B.C. It is covered by the Nelson topographic map-sheet No. 82F/6 and airphoto Nos. B.C. 80116 159-161. The property ranges in elevation from 3,700 feet to 6,800 feet on Grassy Mountain. Vegetation cover ranges from sub-alpine meadows on the ridge crest to thick stands of spruce and fir at lower elevations. Access to lower edges of the property is via Granite Creek Logging to the north and Grassy Creek logging road to the south. A helicopter pad exists on the ridge crest 1 km east of Grassy Mountain at 6,400 ft. and a campsite nearby.

History

Work done in previous years consisted of chip sampling of various quartz veins, trenching; and an adit was driven along a quartz lens to produce 15½ tons of sorted ore which returned an average of 1.944 oz. of gold, 7.92 oz. of silver and 9.42% lead (see R.C. Macdonald's Rachel Property Report of 22 April, 1981 for details). The gold bearing quartz veins cut through a porphyritic phase of the Lower Cretaceous Nelson batholith.

<u>Claim</u>	<u>Units</u>	<u>Record No.</u>	<u>Record Date</u>	<u>Expiry</u>
Rachel 1		2091	9 Jan., 1981	1982
2		2092	9 Jan., 1981	1982
3		1433	23 Jan., 1980	1982
4		1434	23 Jan., 1980	1982
5		2094	12 Jan., 1981	1982
6		2095	12 Jan., 1981	1982
7		2096	12 Jan., 1981	1982
8		2097	12 Jan., 1981	1982
Amber 1	(10)	1435	28 Jan., 1980	1982
Lindsey 1	(8)	1436	23 Jan., 1980	1982
Vicki 1	(6)	1437	23 Jan., 1980	1982
Margot 1	(20)	1496	19 Feb., 1980	1982

PROPERTY WORK

The Rachel property was visited for 8 days this past August by a 2-man prospecting team. Mobilization was done out of Nelson and a fly camp was set up on the ridge crest.

This property work consisted of the mapping and chip sampling of all quartz veins exposed in the area. A 600 m by 200 m soil sample grid was put in, centered on the adit, and consisting of approximately 165 samples. Surface drainage patterns were also mapped out, as were all previous workings, trenches and sample locations that could be located. A geophysical survey using a VLFEM was run over the area of the adit to determine if any conductors were associated with the mineralized quartz vein.

The adit was examined and chip samples were taken of the quartz vein containing varying amounts of galena and pyrite at various distances into the adit. These samples were analyzed for gold, silver, lead, arsenic, mercury and antimony to determine if any associations existed between the gold and the other minerals which could be used as a tracer when the soil samples were analyzed.

The claims beyond the soil grid area were prospected for two days and several quartz veins were located to the west towards Grassy Mountain.

RESULTS

The analysis of the adit samples established that the vein contained good gold values on the surface, as well as at depth. The following correlations were found between these minerals (value of 1. is a linear relationship):

4.

Gold - silver	0.49
Gold - mercury	0.11
Gold - arsenic	0.04
Gold - lead	0.23
Silver - lead	0.47

Gold and silver are associated with each other and silver to lead.
Silver and lead were chosen to be tested in the soil samples.

TABLE OF RESULTS - SURFACE QUARTZ VEINS

Sample No.	Location	Size (cm)	Vein		Comments	Rock Geochem. Results g/tonne	
			Strike	Dip		Au	Ag
P24RAR 1	470W	1	N77°E	50°N	Minor spec. hematite	-	0.1
2	"				vein sampled every	-	0.2
3	"				5 meters	-	0.1
4	"				"	-	0.1
5	"	10			Another vein above	-	0.1
6	"					0.05	0.4
7	2085M el				Altered granite	-	
8	"				Quartz float	0.01	0.3
9	2045M el				Quartz float	-	0.1
10	South Grassy Mtn.	200	N 6°E	54°W	Mafic dike W. Min. FeS ₂	-	0.1
11	35W+106N	9	N45°E	20°E	Exposed 5 M, other veins	0.01	0.3
12	37W+115N	10	N15°E	70°E	Minor pyrite	0.09	1.5
13	35W+120N	3	N10°E	84°E	Minor pyrite	0.22	8.2
14	36W+123N	6	N10°W	65°NE	Minor pyrite	0.18	2.2
15	40W+123N	9	N75°W	22°S	Pyrite, spec. hematite	0.03	0.7
16	47W+122N	3	N55°E	58°E	Minor pyrite	0.02	1.1
17	"	1			Parallel stringers	0.01	0.6
18	50W+123N	4	N60°E	40°E		0.02	0.2
19	120W+140N	1-4	N50°E	55°E		-	1.0
20	130W+140N				Quartz float	0.19	11.6
21	250E+ 45S	-	N30°E	40°E		-	0.7
22	195E+ 75S				Much quartz float	0.01	0.3
23	130E+ 15N	1-40	N35°W	80°SW	Stringers and lens	8.50	27.0
24	25E+ 55N	3	N45°W	13°S	Vein north of pit	0.06	4.0
25	25E+ 50N	8	N65°W	17°S	NE side of pit	0.06	3.1
26	"				Minor pyrite pit	0.04	4.2
27	75E+ 55S				Quartz float	3.10	17.0
28	35E+ 25N	10	N10°E	45°E		0.13	1.4
29	North of adit		N80°E	84°S	Luco - granite dike	0.02	1.1
30	15W+ 60N	15	N15°E	20°E	Minor pyrite	0.07	0.6
31	52W+ 90N	1			Angular float	-	0.3
32	8W+ 4N	8	N42°W	50°N	West of adit	2.90	33.0
33	13W+ 5N	8	N54°W	47°N	Minor pyrite	0.03	2.1
34	14W+ 5N	14-26	N54°W	46°N	Pyrite, galena	1.60	50.0
35	26W+ 8N	10-20	N34°W	54°N	Trench	0.03	4.6
36	195W+ 35S	15-45	N 5°W	33°E	Minor pyrite, exposed 12 M	0.11	7.4
37	190W+ 15S	2	0°	Vert.		0.06	2.5
38	190W+ 25S	8	N25°E	37°E		0.02	0.9
39	187W+ 32S	10	N30°W	30°E	Minor pyrite, hematite	2.70	45.0
40	180W+ 53S	3	N15°E	82°W		0.05	8.2
41	178W+ 65S	6	N 5°E	Vert.		0.88	14.4
42	176W+ 75S	10	N15°W	78°W	Minor pyrite	0.26	1.4
43	172W+ 85S	10	N20°E	75°W		0.10	1.6
44	190W+212N		N65°E		Lens on ridge crest	0.08	18.4

TABLE OF RESULTS - ADIT SAMPLES

Sample Location No.	Comments	Assay results					
		in gm/tonne (unless marked %)					
		Au	Ag	Pb	Sb	As	Hg
P24RAA1 5 meters	Galena - end of adit	0.3	784.3	79.3 %	210.0	11	220
A2 5 m.	Quartz - Galena	3.1	271.5	19.8 %	55.0	22	150
A3 5 m.	Quartz - Pure	2.6	8.6	7300	15.0	14	290
A4 4.5 m.	Quartz - Rusty	4.34	316.7	4.62%	65.0	19	2000
A5 3.5 m	Quartz - Rusty w. Pyrite	186.5	1188.5	2.96%	55.0	23	500
A6 3 m.	White quartz w. Pyrite	2.5	27.4	3900	4.2	25	170
A7 1.5 m.	Quartz Vugs	45.5	79.2	1.39%	17.2	20	150
A8 0.5 m.	Quartz - Rusty	53.3	161.4	3.26%	29.0	15	220
A9 Entrance	Quartz - Rusty	265.2	339.0	2.56%	49.0	22	580
A10 Entrance	White quartz	3.1	6.2	1150	2.2	29	90
A11 5 m.	Quartz at fault contact	4.7	17.1	3100	5.0	59	180
A12 Adit	Altered Granite	2.0	8.2	2850	2.4	12	80

Divide by 34.28187 for oz/ton

DISCUSSION OF RESULTS

Rock samples taken from the adit indicated good correlations between gold and silver and lead. The soil samples were then analysed for silver and lead, and the results proved the value of lead as a tracer. A large anomaly is generated by the known mineralized vein exposed in the adit. Several other areas were found to contain above average values of lead, two of these containing anomalous values (above 200 ppm). These areas are located at 150 W + 75 S, and northeast of the camp at 35 W + 125 N and are marked on the soil sample and lead geochemistry map (Figure 3). Silver showed little variation in the soil geochemistry.

The chip samples of the surface quartz veins averaged 0.49 g/tonne gold and 6.33 g/tonne silver. The sample containing the highest values of gold (8.5 g/tonne) and silver (27.0 g/tonne) is P24RAR 23 located at 130 E + 15 N. Other high samples were located near the adit, samples P24RAR 32, 34; near the second soil anomaly mentioned above, sample P24RAR 39; and at 75 E + 55 S, sample P24RAR 27. The better gold and silver values were usually accompanied by high values of lead, but not always, as in the case of P24RAR 23.

RECOMMENDATIONS

1. That a short diamond drill program be carried out to determine if any mineralized extensions of the quartz vein exposed in the adit exist.

This should begin with a 100 ft. hole located at 25 N + 5 E on the grid, drilling at 290° and 70° from horizontal.

2. That the anomalous areas be resampled, and if the results are consistent they should also be drilled.
3. That additional prospecting be carried out on the surrounding claims.

Respectfully submitted,

A handwritten signature in black ink, appearing to read 'J.W. Page', written in a cursive style.

J.W. Page, B.A.

21 October, 1981

BREAKDOWN OF COSTS (FOR ASSESSMENT PURPOSES)

Payroll - C.J. Sampson	\$ 175.00
J. Page, H. Sovdat, D.G. Leighton	2,000.00
Fringe benefits	600.00
Chemex labs	722.00
J.W. Drafting Services	210.30
J. Page field expenses	652.79
Secretarial, accounting and photocopying	150.00
Aircraft	63.54
	<u>779.62</u>
	\$5,353.25
	=====

PAY ROLL RECORD

Project

Code

Client(s)

1	RACEL	124C	
2
3
4
5

P

Name/Project	1	2	3	4	5	6	7	8	9	10	11	12	13	14	15	16	17	18	19	20	21	22	23	24	25	26	27	28	29	30	31	Time Total	Rate	Amount		
AUGUST J. Page																		1/2	x	x	x	x	x	x	x	x	x	x				10 1/2	100.	1,050.		
H. Sovdat																			x	x	x	x	x	x	x	x	x	x				10	65.	650.		
SEPTEMBER J. Page																																	1	100.	100.	
.D.G.Leighton																																	1	200.	200.	

CLASSIFICATIONS	
A Airphoto Work	N General Supervision
B Budget	O Data Analysis
C Compilation/Drafting	P Prospecting
D Drill Supervision	Q Consultation
E Expediting	R Research
F Line Cutting/Surveys	S Staking
G Geological (Mapping)	T Travel
H Geochemical (Sampling)	U Underground Surveys
I Geophysical (Surveys)	V Property Examination
J Trenching	W Legal
K Cooking/Camp	X Accounting
L Logging Core	Y Secretarial/Office
M Mobilization/Demobilization	Z

TOTALS	2000.0
BENEFITS: includes; W.C., U.I.C. & Insurance% Salary T	
REMARKS;	
PREPARED BY: _____	APPRO _____

CERTIFICATION

I, J.W. Page, do hereby certify that:

1. I am a graduate of the University of British Columbia in Geography - Geomorphology, B.A. (1977).
2. I have been actively engaged in mining exploration for five years.
3. I have personally visited the Rachel property and supervised the exploration work carried out there.

Respectfully submitted,

A handwritten signature in black ink, appearing to read 'J.W. Page', written in a cursive style.

J.W. Page, B.A.

21 October, 1981

APPENDIX

GEOCHEMICAL RESULTS



CHEMEX LABS LTD.

212 BROOKSBANK AVE.
NORTH VANCOUVER, B.C.
CANADA V7J 2C1
TELEPHONE: (604)984-0221
TELEX: 043-52597

• ANALYTICAL CHEMISTS • GEOCHEMISTS • REGISTERED ASSAYERS

CERTIFICATE OF ASSAY

TO : LEIGHTON, D.G. & ASSOC. LTD.
3155 WEST 12TH AVE;
VANCOUVER, B.C.
V6K 2R6

CERT. # : A8113992-001-A
INVOICE # : I8113992
DATE : 06-OCT-81
P.O. # : NONE
124B RACHEL PROSPECT

Sample description	Prep code	Ag FA g/tonne	Au FA g/tonne				
P24 RA A01	207	784.3	0.3	--	--	--	--
P24 RA A02	207	271.5	3.1	--	--	--	--
P24 RA A03	207	8.6	2.6	--	--	--	--
P24 RA A04	207	316.7	43.4	--	--	--	--
P24 RA A05	207	1188.5	186.5	--	--	--	--
P24 RA A06	207	27.4	2.5	--	--	--	--
P24 RA A07	207	79.2	45.0	--	--	--	--
P24 RA A08	207	161.4	53.3	--	--	--	--
P24 RA A09	207	339.0	265.2	--	--	--	--
P24 RA A10	207	6.2	3.1	--	--	--	--
P24 RA A11	207	17.1	4.7	--	--	--	--
P24 RA A12	207	8.2	2.0	--	--	--	--

St. Amadio

.....
Registered Assayer, Province of British Columbia





CHEMEX LABS LTD.

212 BROOKSBANK AVE.
NORTH VANCOUVER, B.C.
CANADA V7J 2C1
TELEPHONE: (604)984-0221
TELEX: 043-52597

• ANALYTICAL CHEMISTS • GEOCHEMISTS • REGISTERED ASSAYERS

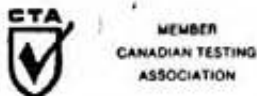
CERTIFICATE OF ANALYSIS

TO : LEIGHTON, D.G. & ASSOC. LTD.
3155 WEST 12TH AVE;
VANCOUVER, B.C.
V6K 2R6

CERT. # : A8113992-001-A
INVOICE # : 18113992
DATE : 06-OCT-81
P.O. # : NONE
1248 RACHEL PROSPECT

Sample description	Prep code	Pb ppm	AS ppm	Hg ppb	Sb ppm		
P24 RA A01	207	>10000	11	220	210.0	--	--
P24 RA A02	207	>10000	22	150	55.0	--	--
P24 RA A03	207	7300	14	290	15.0	--	--
P24 RA A04	207	>10000	19	2000	65.0	--	--
P24 RA A05	207	>10000	23	500	55.0	--	--
P24 RA A06	207	3900	25	170	4.2	--	--
P24 RA A07	207	>10000	20	150	17.2	--	--
P24 RA A08	207	>10000	15	220	29.0	--	--
P24 RA A09	207	>10000	22	580	49.0	--	--
P24 RA A10	207	1150	29	90	2.2	--	--
P24 RA A11	207	3100	59	180	5.0	--	--
P24 RA A12	207	2850	12	80	2.4	--	--

Certified by *J.G. McHay*





CHEMEX LABS LTD.

212 BROOKSBANK AVE.
 NORTH VANCOUVER, B.C.
 CANADA V7J 2C1
 TELEPHONE (604)984-0221
 TELEX: 043-52597

• ANALYTICAL CHEMISTS • GEOCHEMISTS • REGISTERED ASSAYERS

CERTIFICATE OF ANALYSIS

TO : LEIGHTON, D.G. & ASSOC. LTD.
 3155 WEST 12TH AVE;
 VANCOUVER, B.C.
 V6K 2R6

CERT. # : A8114682-001-A
 INVOICE # : 18114682
 DATE : 28-OCT-81
 P.O. # : NONE
R.

Sample description	Prep code	Pb ppm	Ag ppm				
524RA 00+00	201	3700	10.3	--	--	--	--
524RA 00+25S	201	920	0.5	--	--	--	--
524RA 00+50S	201	630	0.2	--	--	--	--
524RA 00+75S	201	358	0.2	--	--	--	--
524RA 00+100S	201	61	0.1	--	--	--	--
524RA 00+25N	201	85	0.1	--	--	--	--
524RA 00+50N	201	33	0.1	--	--	--	--
524RA 00+75N	201	66	0.3	--	--	--	--
524RA 00+100N	201	19	0.1	--	--	--	--
524RA 25E+00	201	115	0.2	--	--	--	--
524RA 25E+25S	201	360	0.2	--	--	--	--
524RA 25E+50S	201	32	0.1	--	--	--	--
524RA 25E+75S	201	105	0.2	--	--	--	--
524RA 25E+100S	201	278	0.2	--	--	--	--
524RA 25E+50N	201	280	0.8	--	--	--	--
524RA 25E+75N	201	21	0.5	--	--	--	--
524RA 25E+100N	201	20	0.1	--	--	--	--
524RA 50E+00	201	178	0.2	--	--	--	--
524RA 50E+25S	201	122	0.2	--	--	--	--
524RA 50E+50S	201	124	0.1	--	--	--	--
524RA 50E+75S	201	123	0.2	--	--	--	--
524RA 50E+100S	201	52	0.1	--	--	--	--
524RA 50E+25N A	201	138	0.2	--	--	--	--
524RA 50E+25N B	201	140	0.2	--	--	--	--
524RA 50E+50N	201	64	0.1	--	--	--	--
524RA 50E+75N	201	42	0.1	--	--	--	--
524RA 50E+100N	201	24	0.2	--	--	--	--
524RA 75E+00S	201	54	0.2	--	--	--	--
524RA 75E+25S	201	20	0.1	--	--	--	--
524RA 75E+50S	201	190	0.5	--	--	--	--
524RA 75E+75S	201	260	0.2	--	--	--	--
524RA 75E+100S	201	22	0.1	--	--	--	--
524RA 75E+25N	201	54	0.1	--	--	--	--
524RA 75E+50N	201	60	0.2	--	--	--	--
524RA 75E+75N	201	40	0.1	--	--	--	--
524RA 75E+100N	201	28	0.2	--	--	--	--
524RA 100E+00	201	40	0.1	--	--	--	--
524RA 100E+25S	201	42	0.2	--	--	--	--
524RA 100E+50S	201	75	0.1	--	--	--	--
524RA 100E+75S	201	65	0.1	--	--	--	--

Certified by *Hart Bichler*





CHEMEX LABS LTD.

212 BROOKSBANK AVE.
 NORTH VANCOUVER, B.C.
 CANADA V7J 2C1
 TELEPHONE: (604)984-0221
 TELEX: 043-52597

• ANALYTICAL CHEMISTS • GEOCHEMISTS • REGISTERED ASSAYERS

CERTIFICATE OF ANALYSIS

TO : LEIGHTON, D.G. & ASSOC. LTD.
 3155 WEST 12TH AVE;
 VANCOUVER, B.C.
 V6K 2R6

CERT. # : A8114682-002-A
 INVOICE # : 18114682
 DATE : 28-OCT-81
 P.O. # : NONE

Sample description	Prep code	Pb ppm	Ag ppm				
524RA 100E+100S	201	98	0.1	--	--	--	--
524RA 100E+25N	201	44	0.1	--	--	--	--
524RA 100E+50N	201	37	0.1	--	--	--	--
524RA 100E+75N	201	38	0.3	--	--	--	--
524RA 100E+100N	203	133	0.4	--	--	--	--
524RA 150E+00	201	42	0.3	--	--	--	--
524RA 150E+25S	201	30	0.1	--	--	--	--
524RA 150E+50S	201	48	0.1	--	--	--	--
524RA 150E+75S	201	35	0.2	--	--	--	--
524RA 150E+100S	201	30	0.1	--	--	--	--
524RA 150E+25N	201	28	0.1	--	--	--	--
524RA 150E+50N	201	64	0.2	--	--	--	--
524RA 150E+75N	201	39	0.2	--	--	--	--
524RA 150E+100N	201	14	0.2	--	--	--	--
524RA 200E+00	201	83	0.2	--	--	--	--
524RA 200E+25S	201	55	0.1	--	--	--	--
524RA 200E+50S	201	170	0.3	--	--	--	--
524RA 200E+75S	201	42	0.3	--	--	--	--
524RA 200E+100S	201	53	0.2	--	--	--	--
524RA 200E+25N	201	59	0.2	--	--	--	--
524RA 200E+50N	201	37	0.2	--	--	--	--
524RA 200E+75N	201	43	0.1	--	--	--	--
524RA 200E+100N	201	11	0.2	--	--	--	--
524RA 250E+00	201	30	0.2	--	--	--	--
524RA 250E+25S	201	15	0.1	--	--	--	--
524RA 250E+50S	201	28	0.1	--	--	--	--
524RA 250E+75S	201	16	0.2	--	--	--	--
524RA 250E+100S	201	33	0.1	--	--	--	--
524RA 250E+25N	201	23	0.3	--	--	--	--
524RA 250E+50N	201	22	0.5	--	--	--	--
524RA 250E+75N	201	51	0.1	--	--	--	--
524RA 250E+100N	201	14	0.4	--	--	--	--
524RA 300E+00S	201	25	0.1	--	--	--	--
524RA 300E+25S	201	25	0.2	--	--	--	--
524RA 300E+50S	201	33	0.1	--	--	--	--
524RA 300E+75S	201	37	0.1	--	--	--	--
524RA 300E+100S	201	27	0.2	--	--	--	--
524RA 300E+25N	201	29	0.1	--	--	--	--
524RA 300E+50N	201	39	0.2	--	--	--	--
524RA 300E+75N	201	73	0.7	--	--	--	--

Certified by *Hart Bichler*





CHEMEX LABS LTD.

212 BROOKSBANK AVE.
 NORTH VANCOUVER, B.C.
 CANADA V7J 2C1
 TELEPHONE: (604)984-0221
 TELEX: 043-52597

• ANALYTICAL CHEMISTS

• GEOCHEMISTS

• REGISTERED ASSAYERS

CERTIFICATE OF ANALYSIS

TO : LEIGHTON, D.G. & ASSOC. LTD.
 3155 WEST 12TH AVE;
 VANCOUVER, B.C.
 V6K 2R6

CERT. # : A8114682-003-A
 INVOICE # : I8114682
 DATE : 28-OCT-81
 P.O. # : NONE

Sample description	Prep code	Pb ppm	Ag ppm				
524RA 300E+100N	201	23	0.1	--	--	--	--
524RA 25W+00	201	120	0.1	--	--	--	--
524RA 25W+25S	201	114	0.5	--	--	--	--
524RA 25W+50S	201	110	0.1	--	--	--	--
524RA 25W+75S	201	75	0.3	--	--	--	--
524RA 25W+100S	201	48	0.5	--	--	--	--
524RA 25W+25N	201	38	0.1	--	--	--	--
524RA 25W+50N	201	68	0.1	--	--	--	--
524RA 25W+75N	201	60	0.1	--	--	--	--
524RA 25W+100N	201	28	0.1	--	--	--	--
524RA 50W+00	201	34	0.1	--	--	--	--
524RA 50W+25S	201	41	0.1	--	--	--	--
524RA 50W+50S	201	54	0.1	--	--	--	--
524RA 50W+75S	201	16	0.1	--	--	--	--
524RA 50W+100S	201	22	0.1	--	--	--	--
524RA 50W 25N	201	38	0.1	--	--	--	--
524RA 50W 50N	201	53	0.1	--	--	--	--
524RA 50W 75N	201	58	0.1	--	--	--	--
524RA 50W 100N	201	27	0.1	--	--	--	--
524RA 75W+00	201	78	0.1	--	--	--	--
524RA 75W+25S	201	40	0.1	--	--	--	--
524RA 75W+50S	201	94	0.1	--	--	--	--
524RA 75W+75S	201	13	0.1	--	--	--	--
524RA 75W+100S	201	14	0.1	--	--	--	--
524RA 75W+25N	201	24	0.1	--	--	--	--
524RA 75W+50N	201	97	0.1	--	--	--	--
524RA 75W+75N	201	28	0.1	--	--	--	--
524RA 75W+100N	201	14	0.1	--	--	--	--
524RA 100W+00	201	16	0.1	--	--	--	--
524RA 100W+25S	201	103	0.1	--	--	--	--
524RA 100W+50S	201	28	0.1	--	--	--	--
524RA 100W+75S	201	68	0.1	--	--	--	--
524RA 100W+25N	201	24	0.1	--	--	--	--
524RA 100W+50N	201	75	0.1	--	--	--	--
524RA 100W+75N	201	37	0.1	--	--	--	--
524RA 100W+100NA	201	50	0.1	--	--	--	--
524RA 100W+100NB	201	25	0.1	--	--	--	--
524RA 150W+00	201	108	0.1	--	--	--	--
524RA 150W+25S	201	50	0.1	--	--	--	--
524RA 150W+50S	201	230	0.1	--	--	--	--

Hart Buchler

Certified by



MEMBER
 CANADIAN TESTING
 ASSOCIATION



CHEMEX LABS LTD.

212 BROOKSBANK AVE.
 NORTH VANCOUVER, B.C.
 CANADA V7J 2C1
 TELEPHONE: (604)984-0221
 TELEX: 043-52597

• ANALYTICAL CHEMISTS

• GEOCHEMISTS

• REGISTERED ASSAYERS

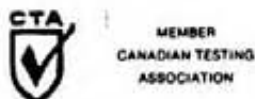
CERTIFICATE OF ANALYSIS

TO : LEIGHTON, D.G. & ASSOC. LTD.
 3155 WEST 12TH AVE;
 VANCOUVER, B.C.
 V6K 2R6

CERT. # : A8114682-004-A
 INVOICE # : 18114682
 DATE : 28-OCT-81
 P.O. # : NONE

Sample description	Prep code	Pb ppm	Ag ppm				
524RA 150W+75S	201	510	0.1	--	--	--	--
524RA 150W+100S	201	90	0.1	--	--	--	--
524RA 150W+25N	201	38	0.1	--	--	--	--
524RA 150W+50N	201	32	0.1	--	--	--	--
524RA 150W+75N	201	44	0.1	--	--	--	--
524RA 150W+100N	201	24	0.1	--	--	--	--
524RA 200W+00	201	35	0.1	--	--	--	--
524RA 200W+25S	201	19	0.1	--	--	--	--
524RA 200W+50S	201	74	0.1	--	--	--	--
524RA 200W+75S	201	98	0.1	--	--	--	--
524RA 200W+100S	201	38	0.1	--	--	--	--
524RA 200W+25N	201	53	0.1	--	--	--	--
524RA 200W+50N	201	63	0.1	--	--	--	--
524RA 200W+75N	201	108	0.1	--	--	--	--
524RA 200W+100N	201	16	0.1	--	--	--	--
524RA 250W+00	201	30	0.1	--	--	--	--
524RA 250W+25S	201	22	0.1	--	--	--	--
524RA 250W+50S	201	32	0.1	--	--	--	--
524RA 250W+75S	201	36	0.1	--	--	--	--
524RA 250W+100S	201	20	0.1	--	--	--	--
524RA 250W+25N	201	46	0.1	--	--	--	--
524RA 250W+50N	201	76	0.1	--	--	--	--
524RA 250W+75N	201	35	0.1	--	--	--	--
524RA 250W+100N	201	73	0.1	--	--	--	--
524RA 300W+00	201	84	0.1	--	--	--	--
524RA 300W+25S	201	55	0.1	--	--	--	--
524RA 300W+50S	201	125	0.1	--	--	--	--
524RA 300W+75S	201	19	0.1	--	--	--	--
524RA 300W+100S	201	16	0.1	--	--	--	--
524RA 300W+25N	201	31	0.1	--	--	--	--
524RA 300W+50N	201	72	0.1	--	--	--	--
524RA 300W+75N	201	52	0.1	--	--	--	--
524RA 300W+100N	201	13	0.1	--	--	--	--
524RA L1	201	19	0.1	--	--	--	--
524RA L2	201	31	0.1	--	--	--	--
524RA L3	201	17	0.1	--	--	--	--
524RA L4	201	43	0.1	--	--	--	--
524RA L5	201	20	0.1	--	--	--	--
524RA L6	201	200	0.2	--	--	--	--
524RA L7	201	39	0.1	--	--	--	--

Certified by *Hart Bechler*





CHEMEX LABS LTD.

212 BROOKSBANK AVE.
NORTH VANCOUVER, B.C.
CANADA V7J 2C1
TELEPHONE: (604)984-0221
TELEX: 043-52597

• ANALYTICAL CHEMISTS

• GEOCHEMISTS

• REGISTERED ASSAYERS

CERTIFICATE OF ANALYSIS

TO : LEIGHTON, D.G. & ASSOC. LTD.
3155 WEST 12TH AVE;
VANCOUVER, B.C.
V6K 2R6

CERT. # : A8114682-005-A
INVOICE # : I8114682
DATE : 28-OCT-81
P.O. # : NONE

Sample description	Prep code	Pb ppm	Ag ppm				
524RA L8	201	19	0.2	--	--	--	--
524RA L9	201	30	0.1	--	--	--	--
524RA S1	201	150	0.3	--	--	--	--
524RA S2	201	318	1.5	--	--	--	--
P-24-RA L-1	201	210	0.1	--	--	--	--
P-24-RA L-2	201	35	0.1	--	--	--	--
P-24-RA L-3	201	230	0.1	--	--	--	--
P-24-RA L-4	201	35	0.1	--	--	--	--
P-24-RA L-5	201	53	0.1	--	--	--	--
P-24-RA L-6	201	220	0.1	--	--	--	--
P-24-RA L-7	201	125	0.1	--	--	--	--
P-24-RA L-8	201	82	0.7	--	--	--	--

Certified by *Hart Bichler*



MEMBER
CANADIAN TESTING
ASSOCIATION



CHEMEX LABS LTD.

212 BROOKSBANK AVE.
 NORTH VANCOUVER, B.C.
 CANADA V7J 2C1
 TELEPHONE: (604)984-0221
 TELEX: 043-52597

• ANALYTICAL CHEMISTS

• GEOCHEMISTS

• REGISTERED ASSAYERS

CERTIFICATE OF ANALYSIS

TO : LEIGHTON, D.G. & ASSOC. LTD.
 3155 WEST 12TH AVE;
 VANCOUVER, B.C.
 V6K 2R6

CERT. # : A8114679-001-A
 INVOICE # : I6114679
 DATE : 29-OCT-81
 P.O. # : NONE
 124B-RACHEL

Sample description	Prep code	Pb ppm	Ag ppm	AU-AA ppb			
P-24-RA-R-1	205	5	0.1	<10	--	--	--
P-24-RA-R-2	205	8	0.2	<10	--	--	--
P-24-RA-R-3	205	2	0.1	<10	--	--	--
P-24-RA-R-4	205	24	0.1	<10	--	--	--
P-24-RA-R-5	205	4	0.1	<10	--	--	--
P-24-RA-R-6	205	24	0.4	50	--	--	--
P-24-RA-R-7	205	88	0.3	<10	--	--	--
P-24-RA-R-8	205	27	0.3	10	--	--	--
P-24-RA-R-9	205	8	0.1	<10	--	--	--
P-24-RA-R-10(A)	205	8	0.1	<10	--	--	--
P-24-RA-R-10(B)	205	65	0.3	10	--	--	--
P-24-RA-R-12	205	42	1.5	90	--	--	--
P-24-RA-R-13	205	226	8.2	220	--	--	--
P-24-RA-R-14	205	41	2.2	180	--	--	--
P-24-RA-R-15	205	72	0.7	30	--	--	--
P-24-RA-R-16	205	110	1.1	20	--	--	--
P-24-RA-R-17	205	31	0.6	10	--	--	--
P-24-RA-R-18	205	6	0.2	20	--	--	--
P-24-RA-R-19	205	72	1.0	<10	--	--	--
P-24-RA-R-20	205	408	11.6	190	--	--	--
P-24-RA-R-21	205	9	0.7	<10	--	--	--
P-24-RA-R-22	205	11	0.3	10	--	--	--
P-24-RA-R-23	205	32	27.0	8500	--	--	--
P-24-RA-R-24	205	372	4.0	60	--	--	--
P-24-RA-R-25	205	190	3.1	60	--	--	--
P-24-RA-R-26	205	416	4.2	40	--	--	--
P-24-RA-R-27	205	2600	17.0	3100	--	--	--
P-24-RA-R-28	205	55	1.4	130	--	--	--
P-24-RA-R-29	205	50	1.1	20	--	--	--
P-24-RA-R-30	205	95	0.6	70	--	--	--
P-24-RA-R-31	205	13	0.3	<10	--	--	--
P-24-RA-R-32	205	1900	33.0	2900	--	--	--
P-24-RA-R-33	205	93	2.1	30	--	--	--
P-24-RA-R-34	205	>10000	50.0	1600	--	--	--
P-24-RA-R-35	205	4100	4.6	30	--	--	--
P-24-RA-R-36	205	990	7.4	110	--	--	--
P-24-RA-R-37	205	1100	2.5	60	--	--	--
P-24-RA-R-38	205	166	0.9	20	--	--	--
P-24-RA-R-39	205	1550	45.0	2700	--	--	--
P-24-RA-R-40	205	412	8.2	50	--	--	--

Certified by *J.F. McMan*





CHEMEX LABS LTD.

212 BROOKSBANK AVE.
NORTH VANCOUVER, B.C.
CANADA V7J 2C1
TELEPHONE: (604)984-0221
TELEX: 043-52597

• ANALYTICAL CHEMISTS • GEOCHEMISTS • REGISTERED ASSAYERS

CERTIFICATE OF ANALYSIS

TO : LEIGHTON, D.G. & ASSOC. LTD.
3155 WEST 12TH AVE;
VANCOUVER, B.C.
V6K 2R6

CERT. # : A8114679-002-A
INVOICE # : 18114679
DATE : 29-OCT-81
P.O. # : NONE
124B-RACHEL

Sample description	Prep code	Pb ppm	Ag ppm	AU-AA ppb			
P-24-RA-R-41	205	740	14.4	880	--	--	--
P-24-RA-R-42	205	133	1.4	260	--	--	--
P-24-RA-R-43	205	253	1.6	100	--	--	--
P-24-RA-R-44	205	358	18.4	80	--	--	--



Certified by *J.F. McRay*



CHEMEX LABS LTD.

212 BROOKSBANK AVE.
NORTH VANCOUVER, B.C.
CANADA V7J 2C1
TELEPHONE: (604)984-0221
TELEX: 043-52597

• ANALYTICAL CHEMISTS

• GEOCHEMISTS

• REGISTERED ASSAYERS

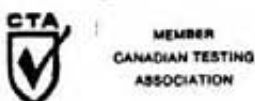
CERTIFICATE OF ASSAY

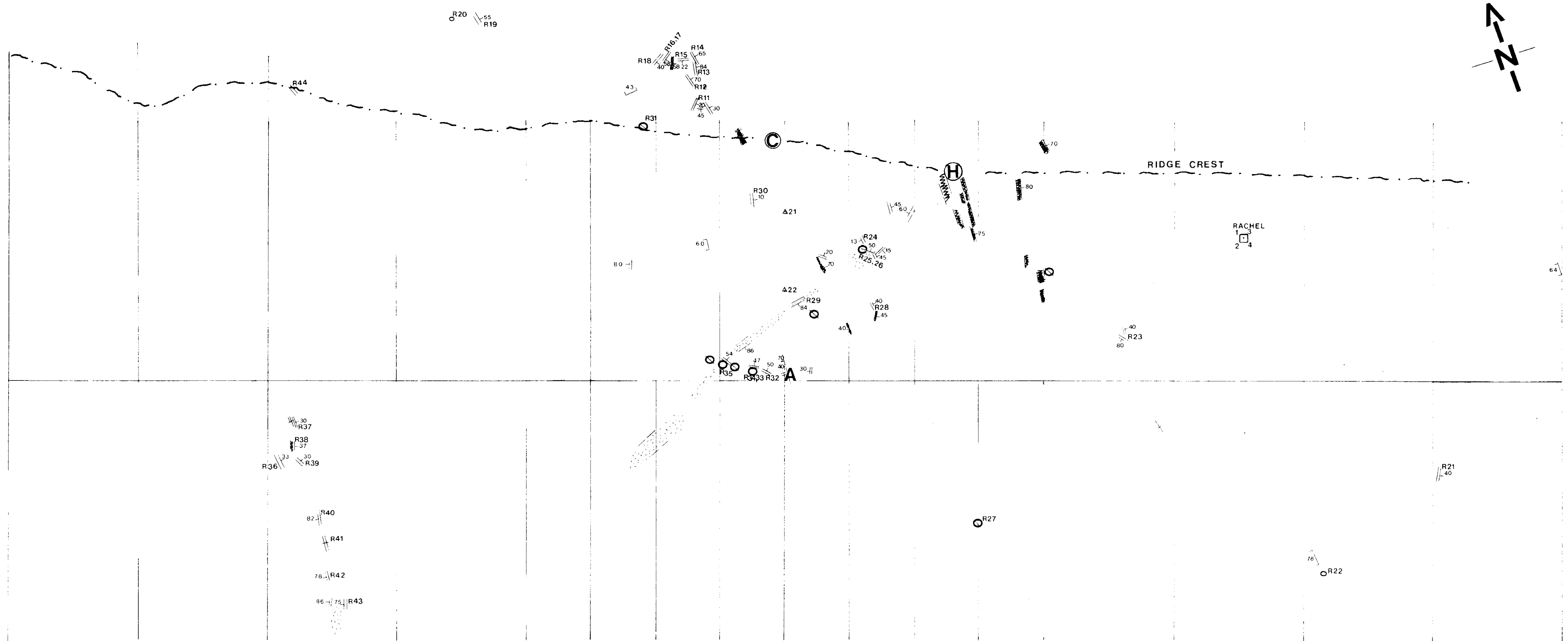
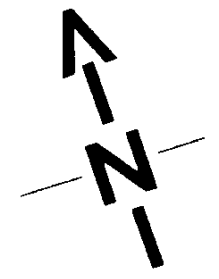
TO : LEIGHTON, D.G. & ASSOC. LTD.
3155 WEST 12TH AVE;
VANCOUVER, B.C.
V6K 2R6

CERT. # : A8114564-001-A
INVOICE # : I8114564
DATE : 05-NOV-81
P.O. # : NONE
1248 RACHEL PROSPECT

Sample description	Prep code	Pb %						
P24 RA A01	214	79.30	--	--	--	--	--	--
P24 RA A02	214	19.80	--	--	--	--	--	--
P24 RA A04	214	4.62	--	--	--	--	--	--
P24 RA A05	214	2.96	--	--	--	--	--	--
P24 RA A07	214	1.39	--	--	--	--	--	--
P24 RA A08	214	3.26	--	--	--	--	--	--
P24 RA A09	214	2.56	--	--	--	--	--	--

.....
Registered Assayer, Province of British Columbia





LEGEND

- A** ADIT
- H** HELICOPTER PAD
- C** CAMP
- o** OPEN CUT / TRENCH
- x** QUARTZ VEIN-STRIKE, DIP
- Rx** ROCK SAMPLE NUMBER P24RARX
- o** ROCK SAMPLE LOCATION
- ▨** LEUCOGRANITE
- x** FRACTURE - STRIKE, DIP
- ▨** MAFIC DYKE
- - -** CONTACT
- - -** RIDGE CREST
- - -** GRID LINES
- Δx** PREVIOUS SURVEY POINTS
- CLAIM POST

10,088

FIG. 2

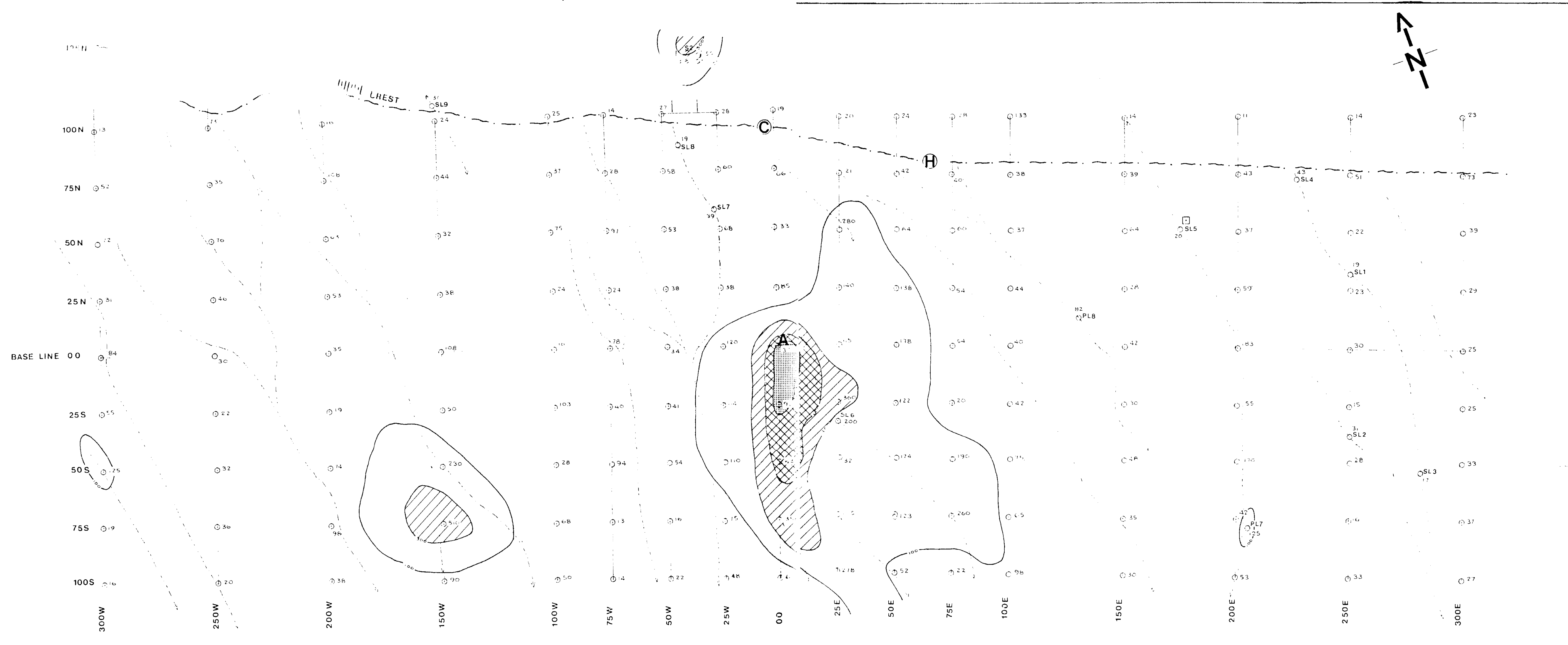
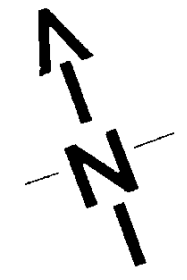
KIMBERLEY GOLD RES. INC.

**RACHEL PROPERTY
GEOLOGY**

SCALE 1:1000

J.W. PAGE
J.W. PAGE

SEPT. 1981



LEGEND

- A** ADIT
- H** HELICOPTER PAD
- C** CAMP
- RIDGE CREST
- GRID LINES
- SOIL SAMPLE LOCATION, SAMPLE NUMBER IS GRID COORDINATE
- DRAINAGE IN LINIMENTS
- LINIMENT SAMPLE
- PLx LINIMENT SAMPLE NUMBER P24RALX
- SLx LINIMENT SAMPLE NUMBER S24RALX
- CLAIM POST

10,088

FIG. 3

KIMBERLEY GOLD RES. INC.		
RACHEL PROPERTY		
SOIL SAMPLE GRID		
LEAD IN SOILS GEOCHEMISTRY (PPM)		
SCALE 1:1000	<i>J.W. PAGE</i>	SEPT. 1981