

ASSESSMENT REPORT
SOIL GEOCHEMICAL SURVEY
of
North Star, Y.R.U.,
Broken Hill and Coronation
Mineral Claims

50°26'N 117°10'W

Mining Division: Slocan
NTS: 82K/6E

P.J. Wojdak
February 1982

part 1
of 34

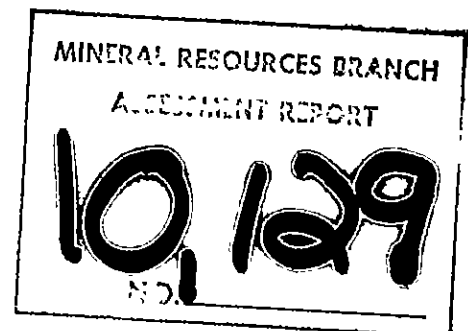


TABLE OF CONTENTS

	<u>Page No.</u>
INTRODUCTION	1
REGIONAL SETTING	1
SOIL GEOCHEMISTRY	4
North Star, Y.R.U., Broken Hill, Coronation	4
CONCLUSIONS	5
APPENDIX 1: Statement of Expenditures	
APPENDIX 2: Statement of Qualifications	

LIST OF FIGURES

1. Location Map	2
2. Claim Map	3
3. North Star Geochemistry Cu	In Pocket
4. North Star Geochemistry Pb	"
5. North Star Geochemistry Zn	"
6. North Star Geochemistry Au	"
7. North Star Geochemistry Ag	"
8. North Star Geochemistry As	"

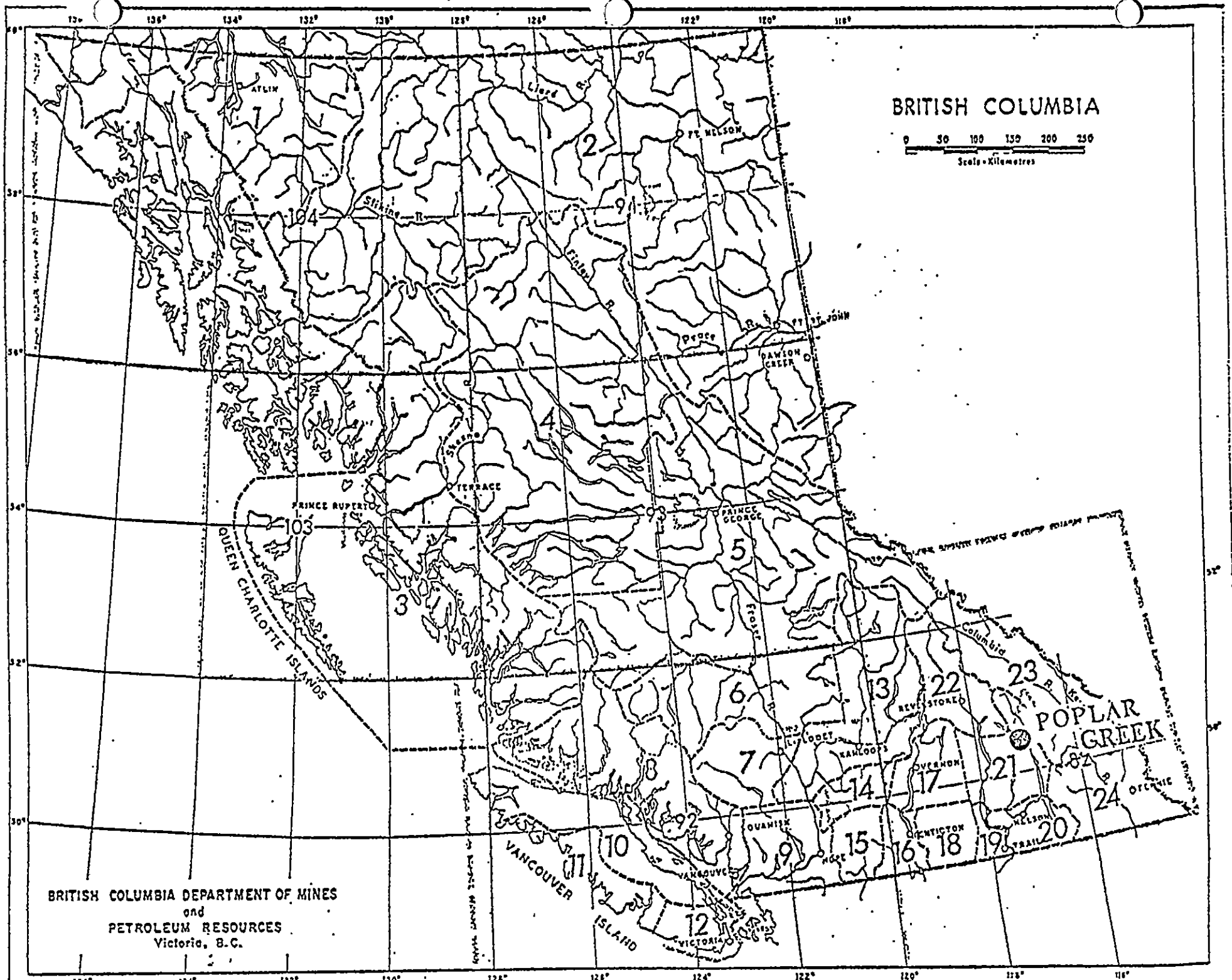
INTRODUCTION

The North Star, Y.R.U., Coronation and Broken Hill claims are located on lower Rapid Creek, at its confluence with Lardeau River, 80 km north of Kaslo. Access is by Highway #33 (gravel surface) from Meadow Creek and Kaslo. The claims lie on a moderate to steep southwest side of Lardeau Valley, deeply incised by Rapid Creek Valley.

A gold prospecting rush passed through the Lardeau Valley at the turn of the century, stopping briefly at nearby Poplar Creek between 1898 and 1903. Exploration, consisting of open cuts and driving numerous short adits continued intermittently until about 1930. Essentially no further work had been done until 1980 when claims in the area were optioned by Westmin Resources and Armco. A soil geochemical survey begun in 1980 was extended in 1981 to cover the new claims. A total of 96 soil samples were collected on July 21 and 22, 1981. Meade's 1980 assessment report details the previous survey. The same base maps have been used to present the new data, which can be distinguished by JE and PM series sample sites. B-horizon soils were sampled with a mattock and sent in Kraft paper bags to Chemex Labs in North Vancouver for atomic absorption analyses.

REGIONAL SETTING

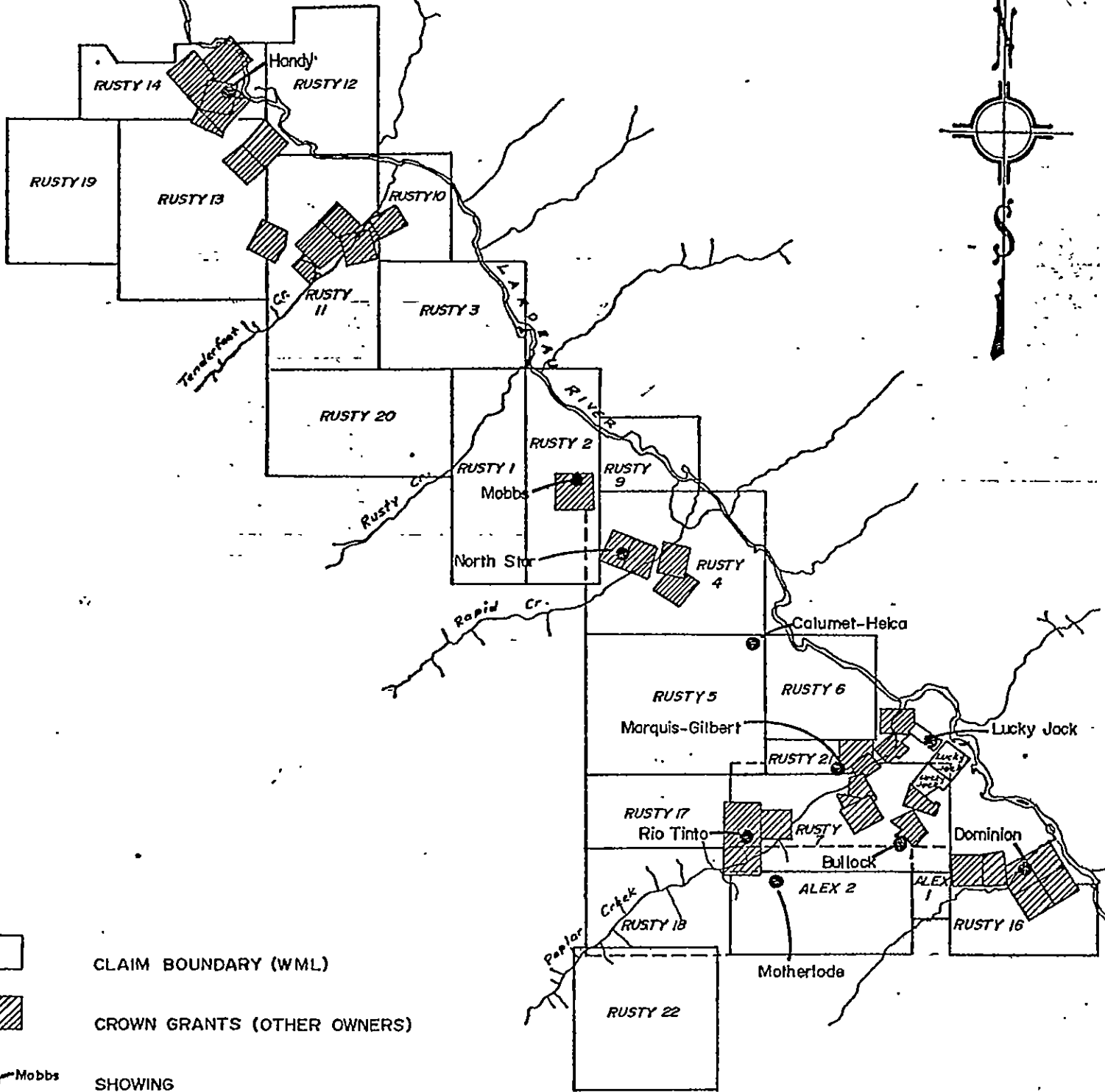
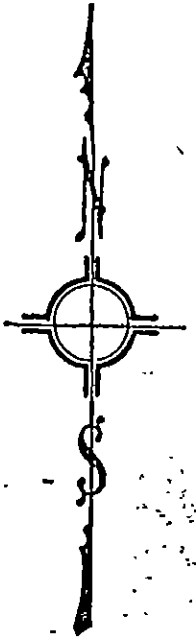
The Rapid Creek area is underlain by lower Paleozoic volcanic and sedimentary strata of the Lardeau Group. These have undergone polyphase deformation and biotite grade metamorphism. The Poplar Creek area geology has been studied in detail by Read (1973) and the regional context for this report is given by a preceding assessment report (Wojdak, 1981). The main lithologies of the area are variably carbonated mafic volcanic rocks (chlorite schist, greenstone) and argillaceous metasediments.



BRITISH COLUMBIA DEPARTMENT OF MINES
and
PETROLEUM RESOURCES
Victoria, B.C.

REVELSTOKE M.D.

SLOCAN M.D.






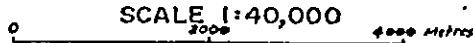
-  CLAIM BOUNDARY (WML)
-  CROWN GRANTS (OTHER OWNERS)
-  Mobbs SHOWING
- RUSTY 17** CLAIM NAME

FIGURE 2.

WESTERN MINES LIMITED			
POPLAR CREEK PROJECT			
LOCATION MAP			
CLAIMS and SHOWINGS			
			
Date: Jan '81	Drawn by: A. Connor	Revised:	M.S. No. 82/K/6E

SOIL GEOCHEMISTRY

In 1980 an extensive soil survey was carried out on the Rusty and Bullock Claims (see H.D. Meade 1980 report). In 1981 additions were made to the Bullock grid to cover claims optioned from Pan American Consultants Ltd. These include the Goldsmith, Pluto and Galileo claims. The new Lucky Jack grid was used to cover the Big Hope, Lucky Three, Lucky Jack and part of March 1 claims. The South and Central grids were extended to cover North Star, Broken Hill, Y.R.U. and Coronation claims.

B-horizon soils were sampled using a mattock and Kraft paper bags. Samples were shipped to Chemex Labs Ltd. in North Vancouver for Cu, Pb, Zn, Ag, Au and As determinations. These were analyzed by atomic absorption and following dissolution by standard techniques described by H.D. Meade in 1980.

North Star, Y.R.U., Broken Hill, Coronation

The North Star and Y.R.U. reverted crown grant claims lie north of Rapid Creek canyon and were grid soil sampled from the Poplar Central grid. Coronation and Broken Hill lie south of Rapid Creek and were covered by extending the Poplar South grid. Three soil lines at 100 m spacing are omitted by the creek canyon.

The results show a greater range for a small area than is typical of the Poplar soil survey. There is a moderately strong coincident copper (to 175 ppm), lead (to 490 ppm), zinc (500 ppm), arsenic (to 170 ppm), gold (50 ppb) on lines 89 and 90+00 NW, on the southern part of North Star and Y.R.U. claims.

South of Rapid Creek there is a continuation of high lead, zinc, arsenic and sporadic gold values outlined by the 1980 survey (follow-up anomalies 10 and 11). Lead values range up to 445 ppm, gold to 400 ppb and arsenic to 450 ppm. Silver values are uniformly low. This soil survey strengthens the trenching recommendation for regional anomaly 10 and augments anomaly 11.

CONCLUSIONS

Soil geochemical anomalies on the North Star, Y.R.U., Broken Hill and Coronation claims are in an area generally favourable for greenstone belt gold mineralization. Geological prospecting and possibly trenching follow up is recommended.

P.J. Wojdak

P.J. Wojdak

APPENDIX 1

STATEMENT OF EXPENDITURES

ON

NORTHSTAR, CORONATION, Y.R.V. AND BROKEN HILL

MINERAL CLAIMS

Work Period July 21 - 22, 1981

Salaries

Jim Eenkooren (soil sampling)	
2 days @ \$43.00	\$ 86.00
Pat Meade	
2 days @ \$45.00	90.00
Paul Wojdak (supervision, report prep.)	
1 day @ \$160.00	160.00
Alex Marr (drafting)	
1 day @ \$71.00	71.00

Analyses

96 soil samples for Au, Ag, As, Cu, Pb	
Zn @ \$11.10	1,065.60

Camp Costs

Groceries: 4 man days @ \$16.00	64.00
Equipment: 4 man days pro-rated at \$15.00 per day	60.00

Transportation

Four wheel drive truck and gas	<u>80.00</u>
	<u>\$1,676.60</u>
	=====

P. Wojdak

APPENDIX 2

STATEMENT OF QUALIFICATIONS

I, PAUL J. WOJDAK of the Municipality of Delta, Province of British Columbia, hereby certify:

1. That I am a geologist residing at 11405 - 85th Avenue, Delta, British Columbia with a business address at Suite 904, 1055 Dunsmuir Street, P.O. Box 49066, Four Bentall Centre, Vancouver, British Columbia V7X 1C4.
2. That I graduated with a B.Sc. (Honours) in Geology and Chemistry from McMaster University, Hamilton, Ontario in 1971 and with a M.Sc. in Geology from the University of British Columbia in 1974.
3. That I am a member of the Geological Association of Canada.
4. That I have practised geology with Cominco Limited and Westmin Resources Limited from 1974 to 1982.

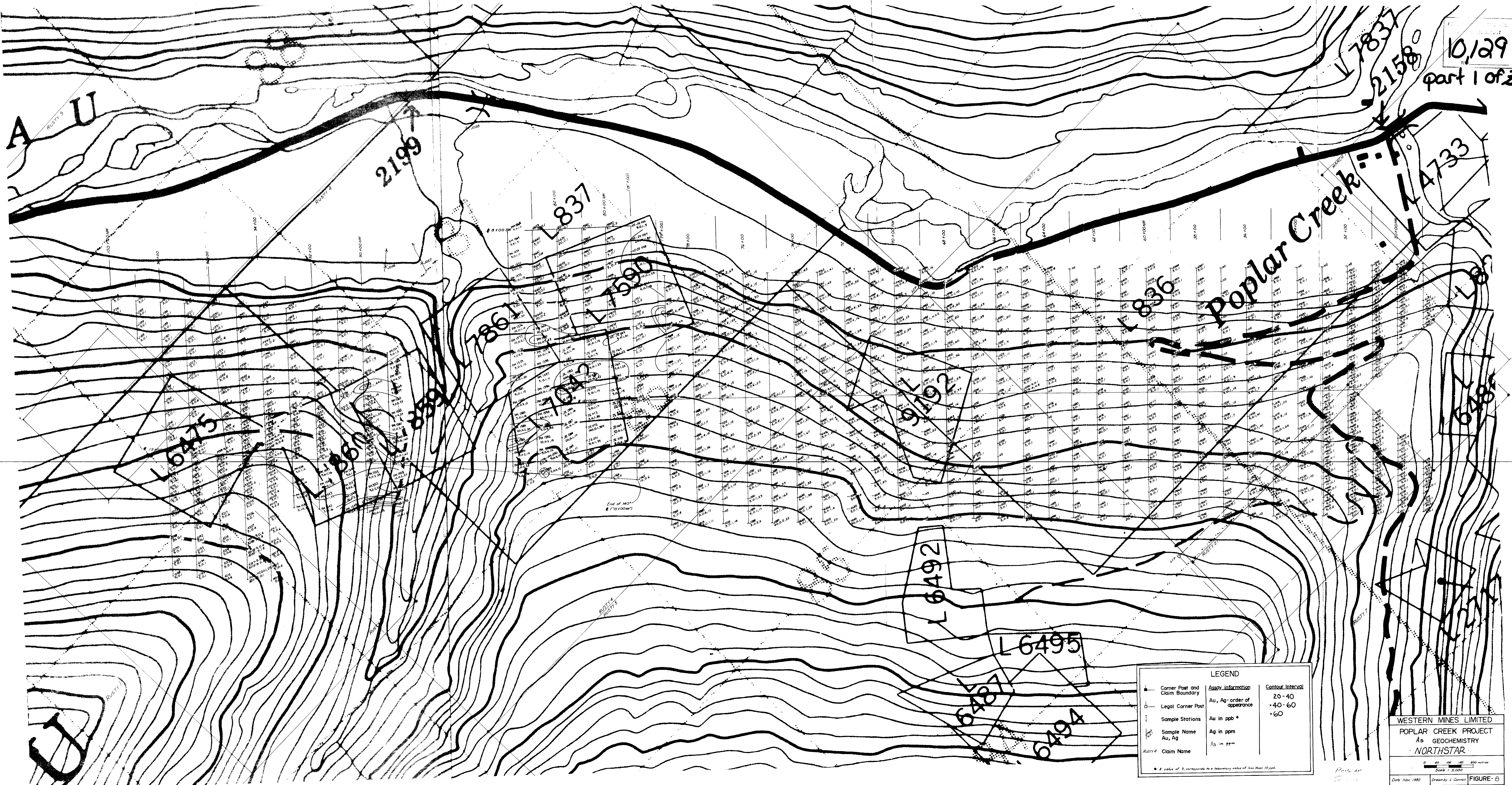
Dated this 1st day of February, 1982 at Vancouver, British Columbia.

Signed



P.J. Wojdak, M.Sc.

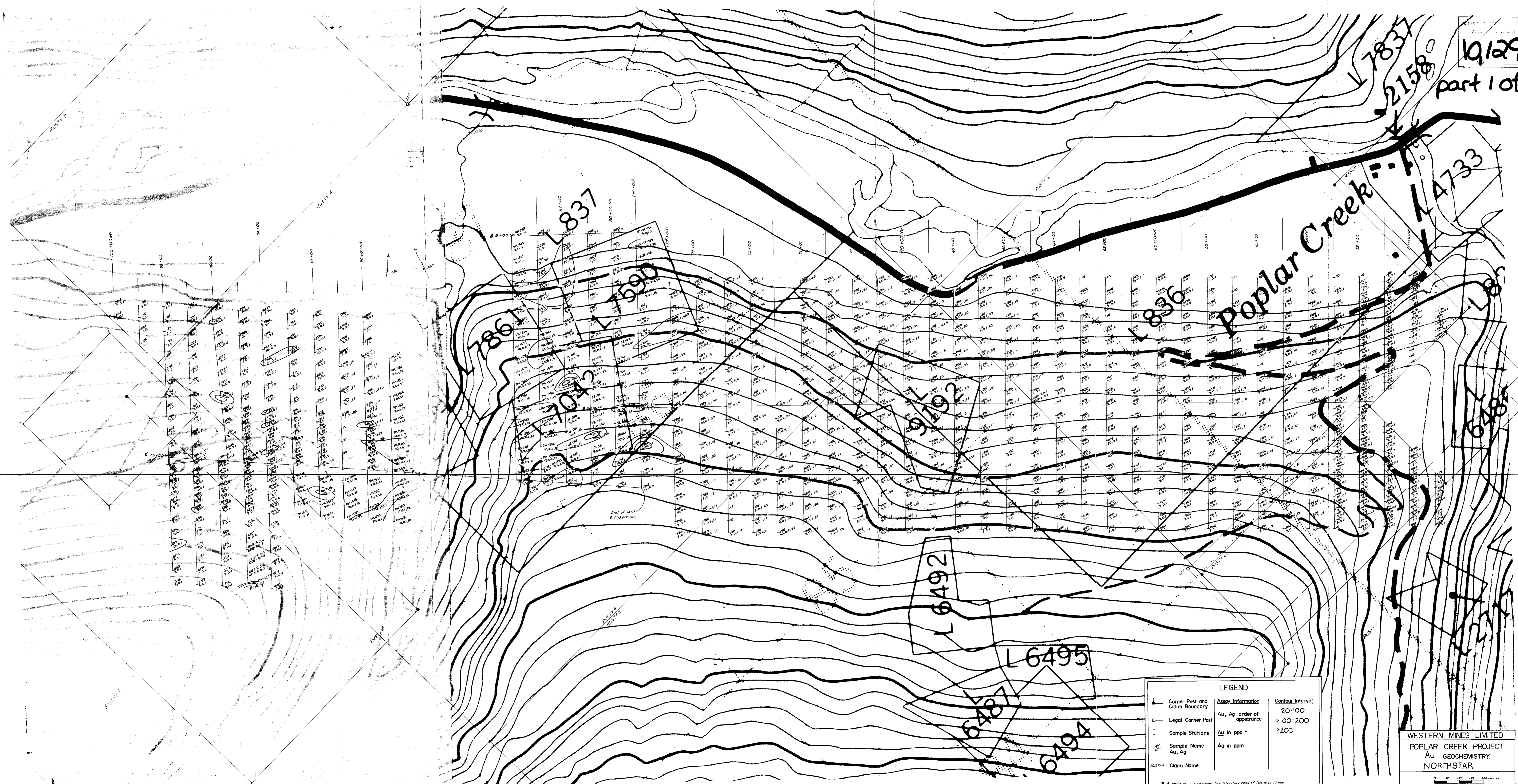
10,129
part 1 of 34



LEGEND		
	Corner Post and Claim Boundary	
	Legal Corner Post	
	Sample Stations	
	Sample Name	
	Claim Name	
	Assay Information	Contour Interval
	Au, Ag - order of appearance	20 - 40
	Au in ppb *	40 - 60
	Ag in ppm	60
	As in ppm	

WESTERN MINES LIMITED
 POPLAR CREEK PROJECT
 AS GEOCHEMISTRY
 NORTHSTAR
 Scale 1:5,000
 Date: Nov 1980
 Drawn by: J. Connor
 FIGURE 6

10/29/4
part 1 of 8



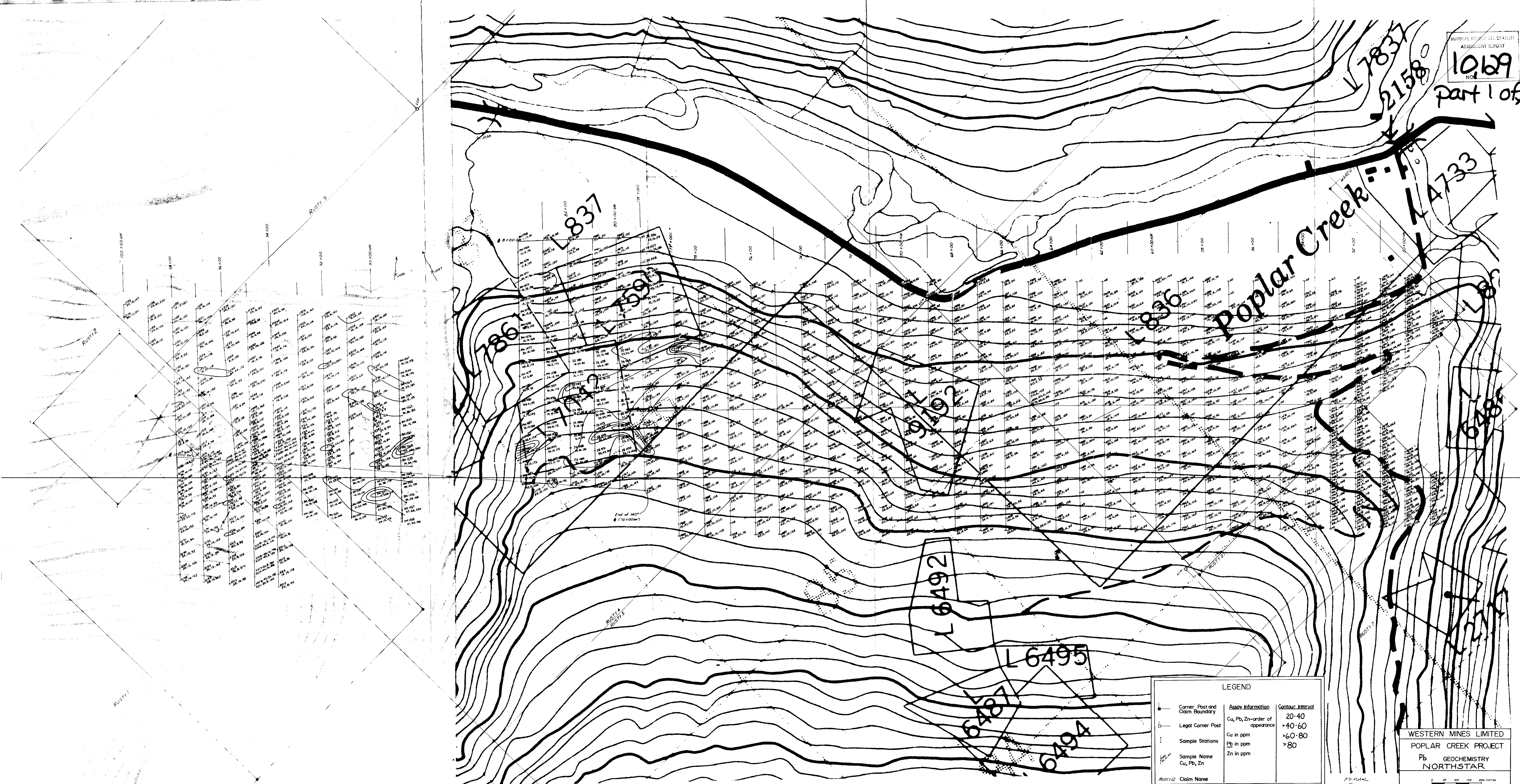
LEGEND		
	Corner Post and Claim Boundary	
	Legal Corner Post	
	Sample Stations	
	Sample Name Au, Ag	
	Claim Name	
Assay Information		Contour Interval
Au, Ag - order of appearance		20-100
Au in ppb *		>100-200
Ag in ppm		>200

* A value of 3, corresponds to a laboratory value of less than 10 ppb.

WESTERN MINES LIMITED
 POPLAR CREEK PROJECT
 Au GEOCHEMISTRY
 NORTHSTAR

0 50 100 200 meters
 Scale 1:5,000

Date: Nov. 1980 Drawn by: L. Connor FIGURE 6

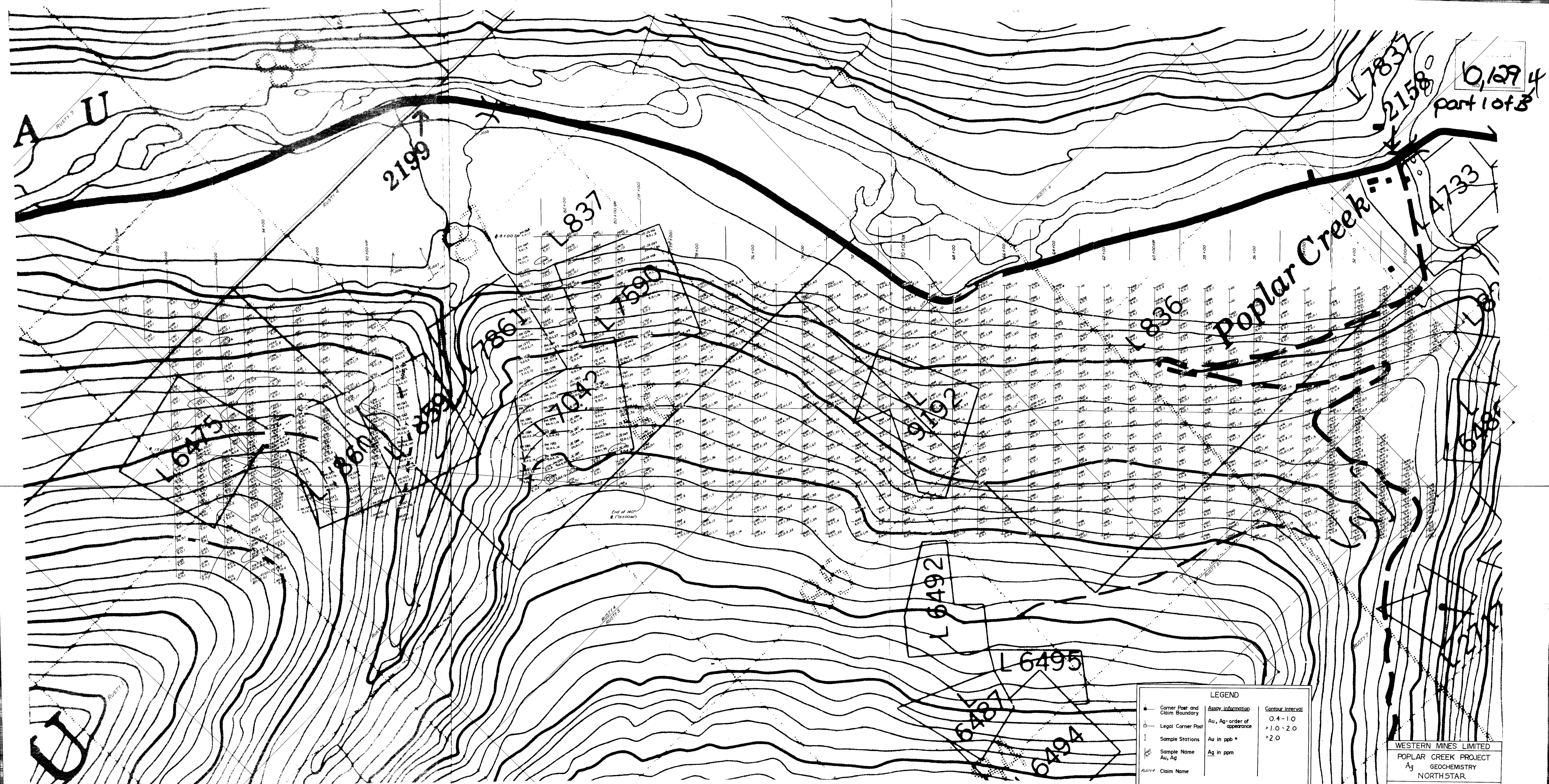


LEGEND		
(Symbol)	Corner Post and Claim Boundary	Assay Information
(Symbol)	Legal Corner Post	Cu, Pb, Zn-order of appearance
(Symbol)	Sample Stations	Cu in ppm
(Symbol)	Sample Name	Pb in ppm
(Symbol)	Claim Name	Zn in ppm
		Contour Interval
		20-40
		>40-60
		>60-80
		>80

WESTERN MINES LIMITED
 POPLAR CREEK PROJECT
 Pb GEOCHEMISTRY
 NORTHSTAR

Scale 1:5,000
 Date Nov. 1980
 Drawn by J. Connor

FIGURE-4



0,129 4
part 1 of 3

LEGEND

—▲—	Corner Post and Claim Boundary	Assoy Information	Contour Interval
—○—	Legal Corner Post	Au, Ag - order of appearance	0.4 - 1.0
— —	Sample Stations	Au in ppb *	> 1.0 - 2.0
—●—	Sample Name Au, Ag	Ag in ppm	> 2.0
—A—	Claim Name		

* A value of 3 corresponds to a laboratory value of less than 10 ppb.

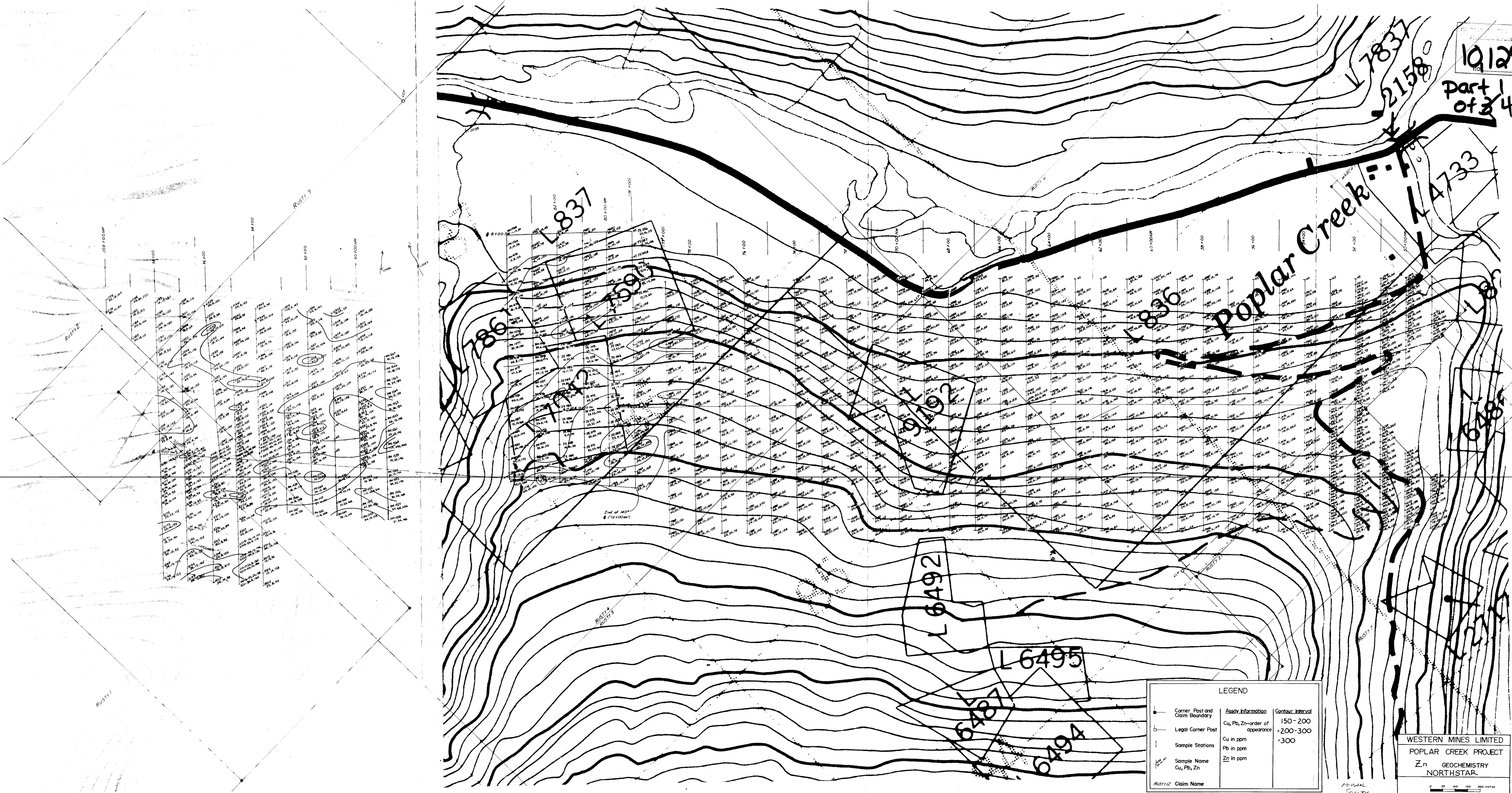
WESTERN MINES LIMITED
 POPLAR CREEK PROJECT
 GEOCHEMISTRY
 NORTH STAR

0 40 80 120 160 200 METERS
 Scale 1:5,000

Date: Nov. 1980
 Drawn by: L. Conner
FIGURE 34

10129

Part of 2/4



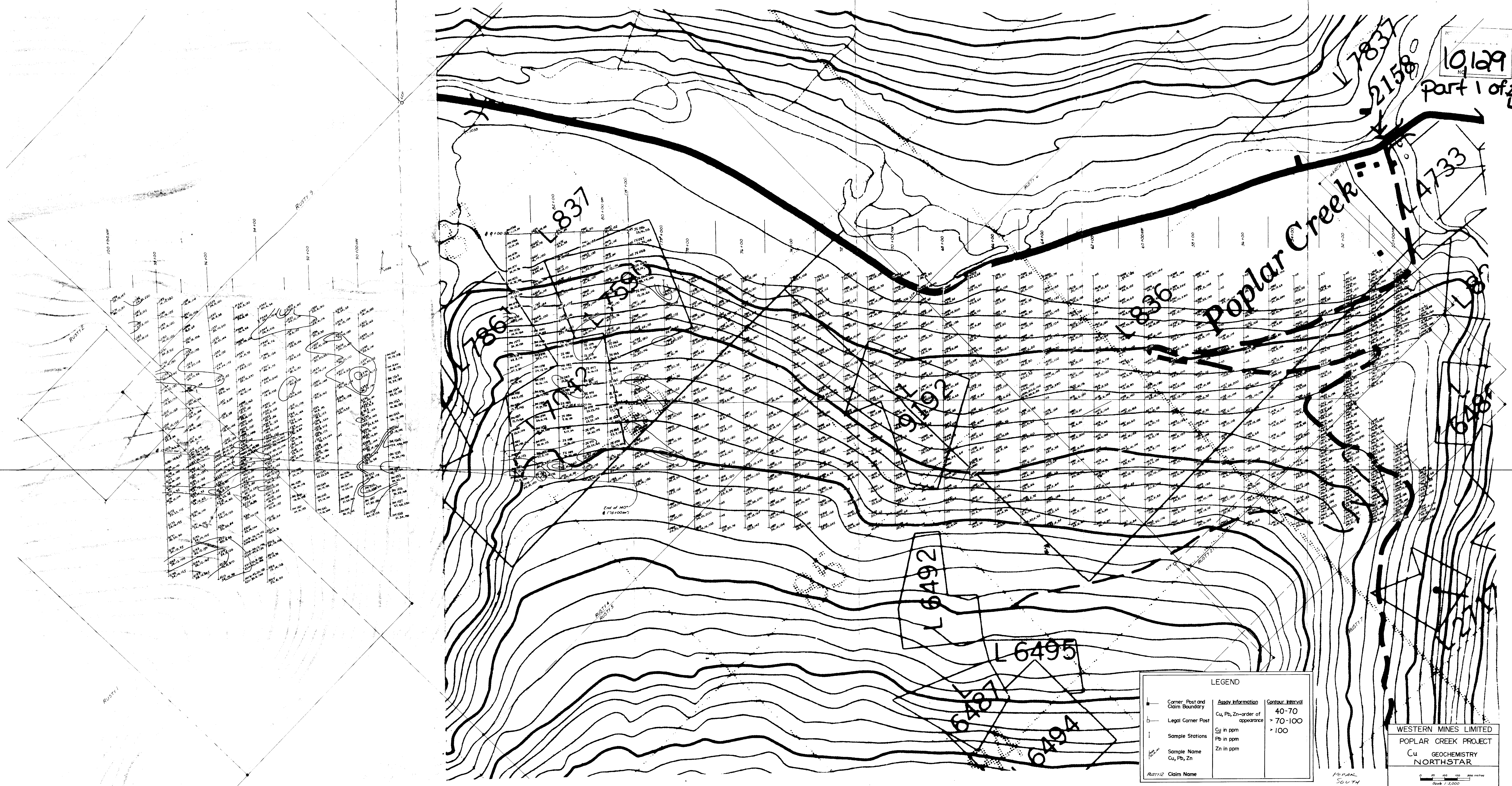
LEGEND		
	Assay Information	Contour Interval
	Cu, Pb, Zn—order of appearance	150-200
	Cu in ppm	200-300
	Pb in ppm	300
	Zn in ppm	
	At 1/2 Claim Name	

WESTERN MINES LIMITED
 POPLAR CREEK PROJECT
 Zn GEOCHEMISTRY
 NORTHSTAR

Scale 1:5,000

Date: Nov. 1980 Drawn by: J. Connor FIGURE- 5

PLAN SOUTH



LEGEND		
	Corner Post and Claim Boundary	
	Legal Corner Post	
	Sample Stations	
	Sample Name	
	Claim Name	
	Assay Information	Contour Interval
	Cu, Pb, Zn-order of appearance	40-70
	Cu in ppm	> 70-100
	Pb in ppm	> 100
	Zn in ppm	

WESTERN MINES LIMITED
POPLAR CREEK PROJECT
Cu GEOCHEMISTRY
NORTHSTAR

Scale 1:5,000

Date: Nov. 1980 Drawn by: L. Connor