

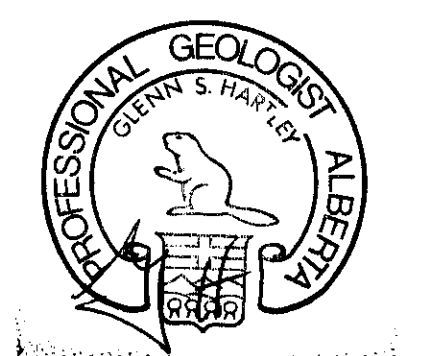
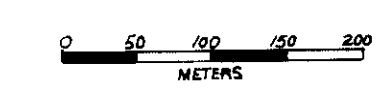
LEGEND

- Rocky Mountain Formation (sandstone)
- Spray River Formation (sandstone and siltstone)
- Fernie Formation (shales and phosphatic shales)
- Igneous Intrusive (Trachyte)
- Strike and Dip of Beds
- 1981 Road (Bulldozer Trail)
- 1980 Road (Bulldozer Trail)

part 2 of a 0.135

Geological Interpretation from Soil Type, Vegetation, Overburden, Float Boulders and Outcrops

Mapped by P.T. 1981 (August)



FIRST NUCLEAR CORPORATION

PROJECT: Geological Map

Dwg. No. 6 Scale: 1 cm = 50m Drawn By: pmv
 N.T.S. 82G/7 Date: Checked By: r t



10,135

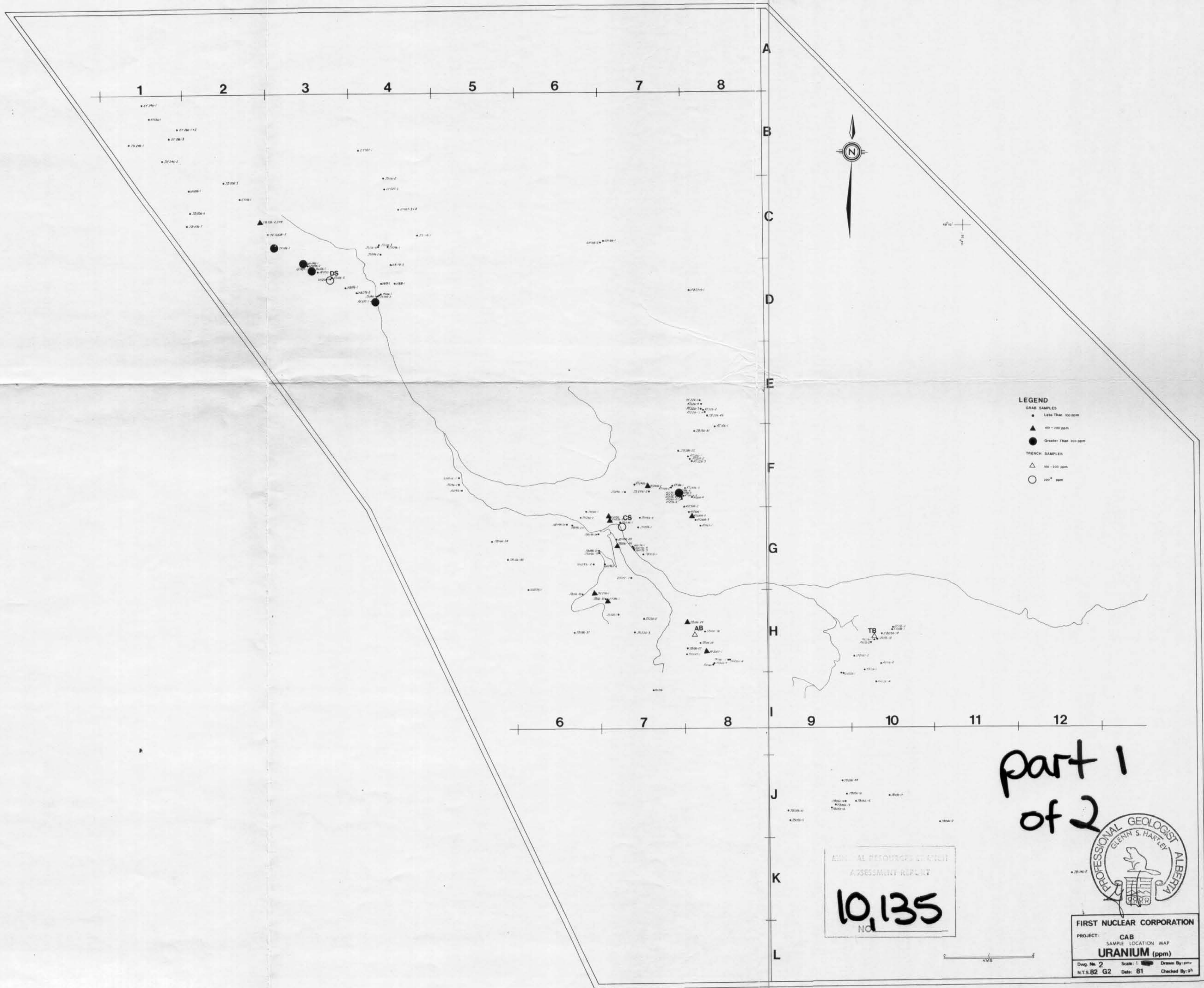
part 2 of 2



FIRST NUCLEAR CORPORATION

PROJECT:

Dwg. No. 11	Scale: 1:8000	Drawn By:
N.T.S. 82G 2	Date:	Checked By:



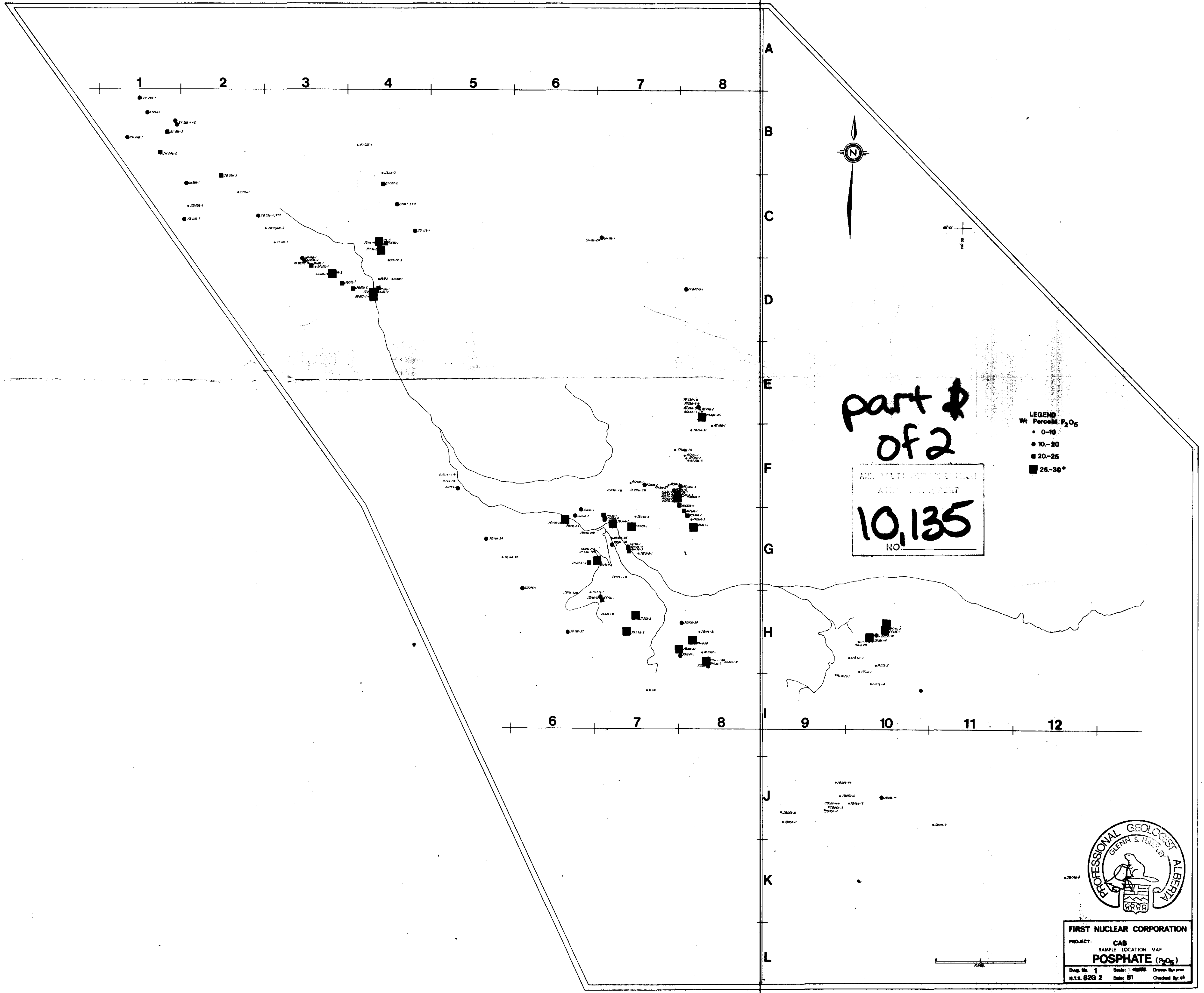
LEGEND
 GRAB SAMPLES
 ● Less Than 100 ppm
 ▲ 100 - 200 ppm
 ● Greater Than 200 ppm
 TRENCH SAMPLES
 △ 100 - 200 ppm
 ○ 200+ ppm

part 1
of 2

MINERAL RESOURCES DIVISION
ASSESSMENT REPORT
10,135
No.



FIRST NUCLEAR CORPORATION
 PROJECT: CAB
 SAMPLE LOCATION MAP
URANIUM (ppm)
 Drawn By: pmv
 Date: 81
 Checked By: gh

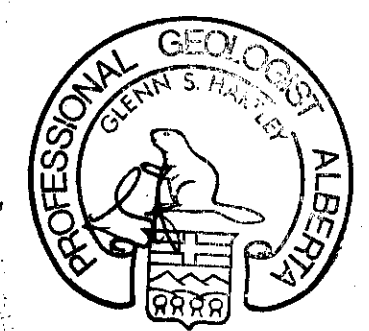


part 2
of 2

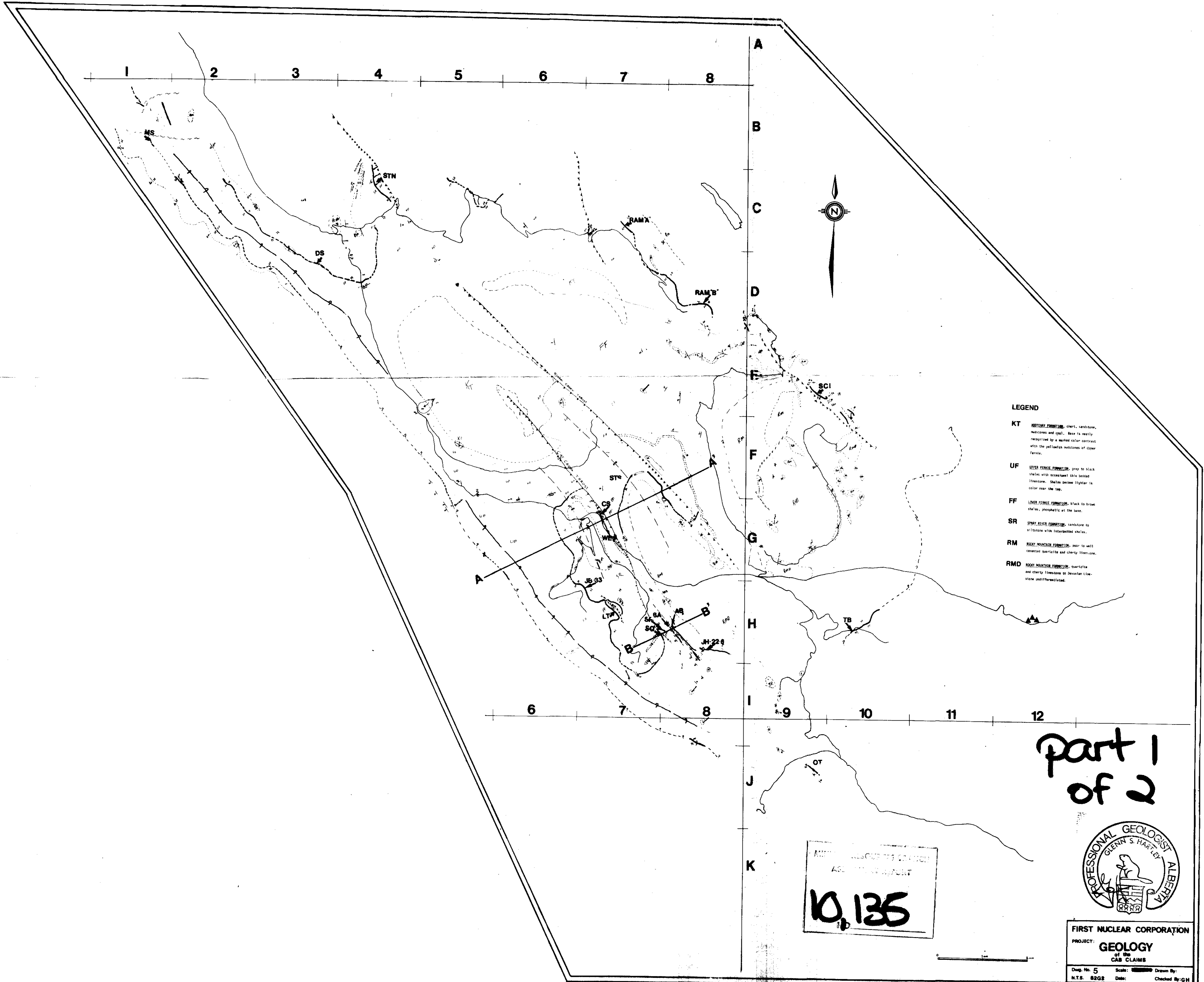
10,135
NO.

LEGEND
Wt Percent P₂O₅

- 0-10
- 10-20
- 20-25
- 25-30+



FIRST NUCLEAR CORPORATION
PROJECT: CAB
SAMPLE LOCATION MAP
POSPHATE (P₂O₅)
Drawn By: jmv
Date: 81
Checked By: gh

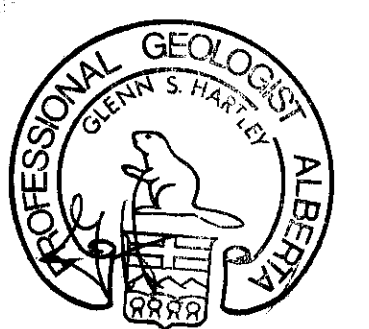


LEGEND

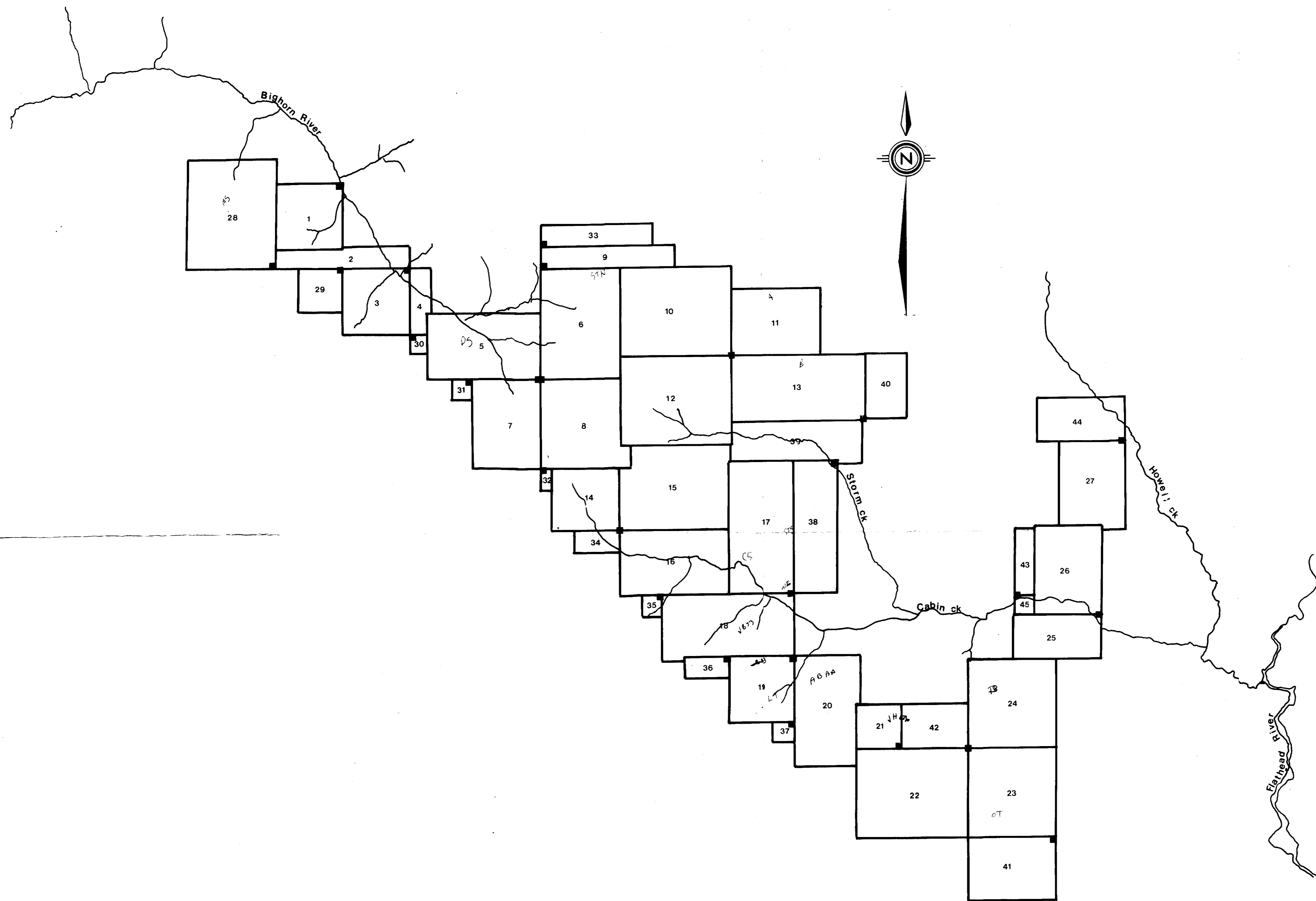
- KT** Kootenai Formation: chert, sandstone, mudstone and gss. Base is mostly recognized by a marked color contrast with the yellowish mudstone of upper Ferlic.
- UF** Upper Ferlic Formation: gray to black shales with occasional thin bedded limestone. Shales become lighter in color near the top.
- FF** Lower Ferlic Formation: black to brown shales, phosphatic at the base.
- SR** Spray River Formation: sandstone to siltstone with interbedded shales.
- RM** Rocky Mountain Formation: poor to well cemented quartzite and cherty limestone.
- RMD** Rocky Mountain Formation: quartzite and cherty limestone to devonian limestone unfractured.

part 1
of 2

MINERAL RIGHTS DIVISION
ALBERTA GOVERNMENT
10,135

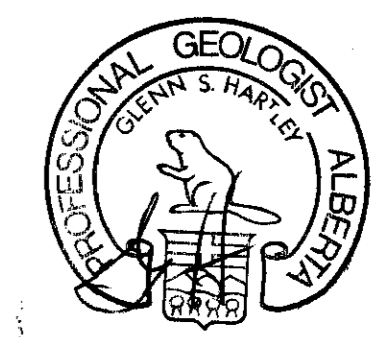


FIRST NUCLEAR CORPORATION
PROJECT: **GEOLOGY**
of the
C&P CLAIMS
Dwg. No. 5 Scale: 1:50,000 Drawn By: [Signature]
N.T.S. 8202 Date: [Blank] Checked By: G.H.

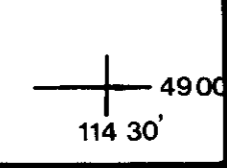


part 2
of 2

10,135

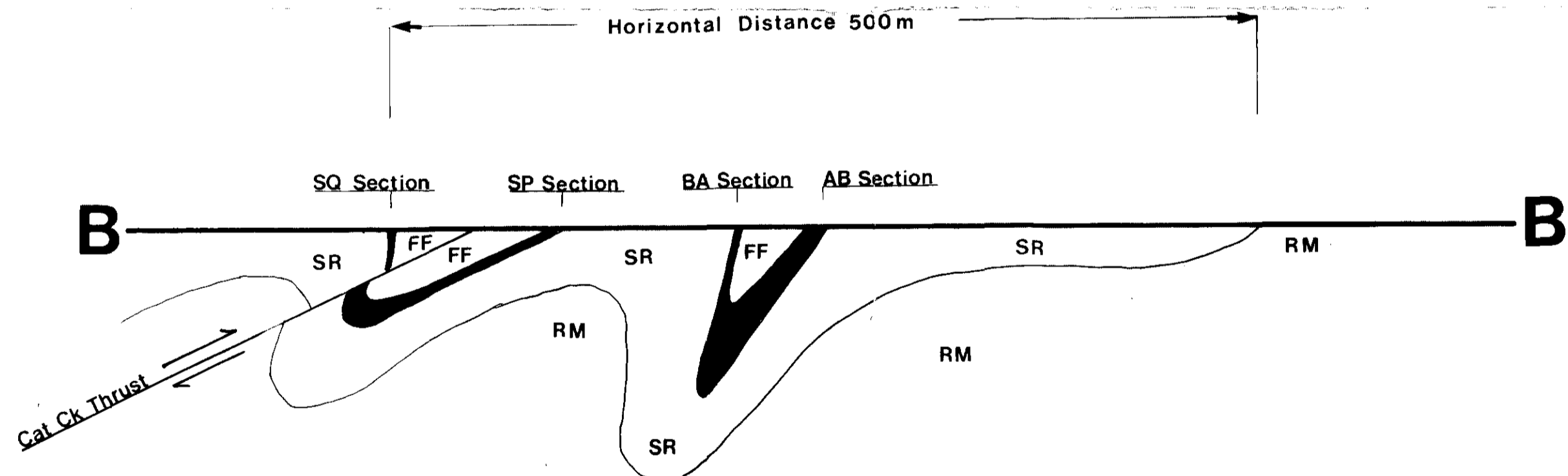
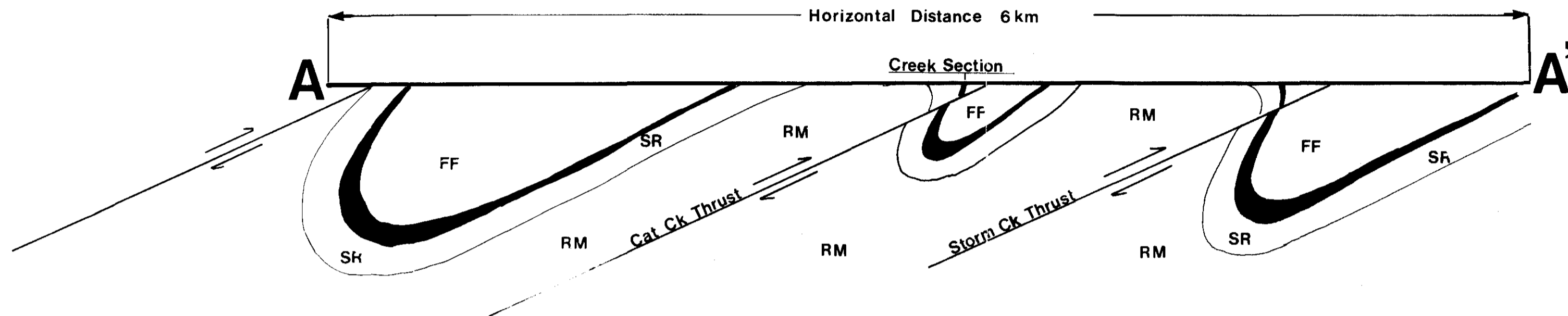


FIRST NUCLEAR CORPORATION
 PROJECT: **Cab Claims Location Map**



Dwg. No. 13 Scale: 1:50,000 Drawn By:
 N.T.S. 32 G 2 Date: 81 Checked By:

Diagrammatic Cross Sections Looking NW



10,135
No

part 2
of 2

Section	True Width	Grade (% P ₂ O ₅)
SQ	1.25 m	16.5
SP	1.0 m	22.2
BA	0.96m	21.46
AB	2.0 m	20.97

FIRST NUCLEAR CORPORATION

PROJECT: Phosphate

Cross Sections A-A' ; B-B'

Dwg. No.

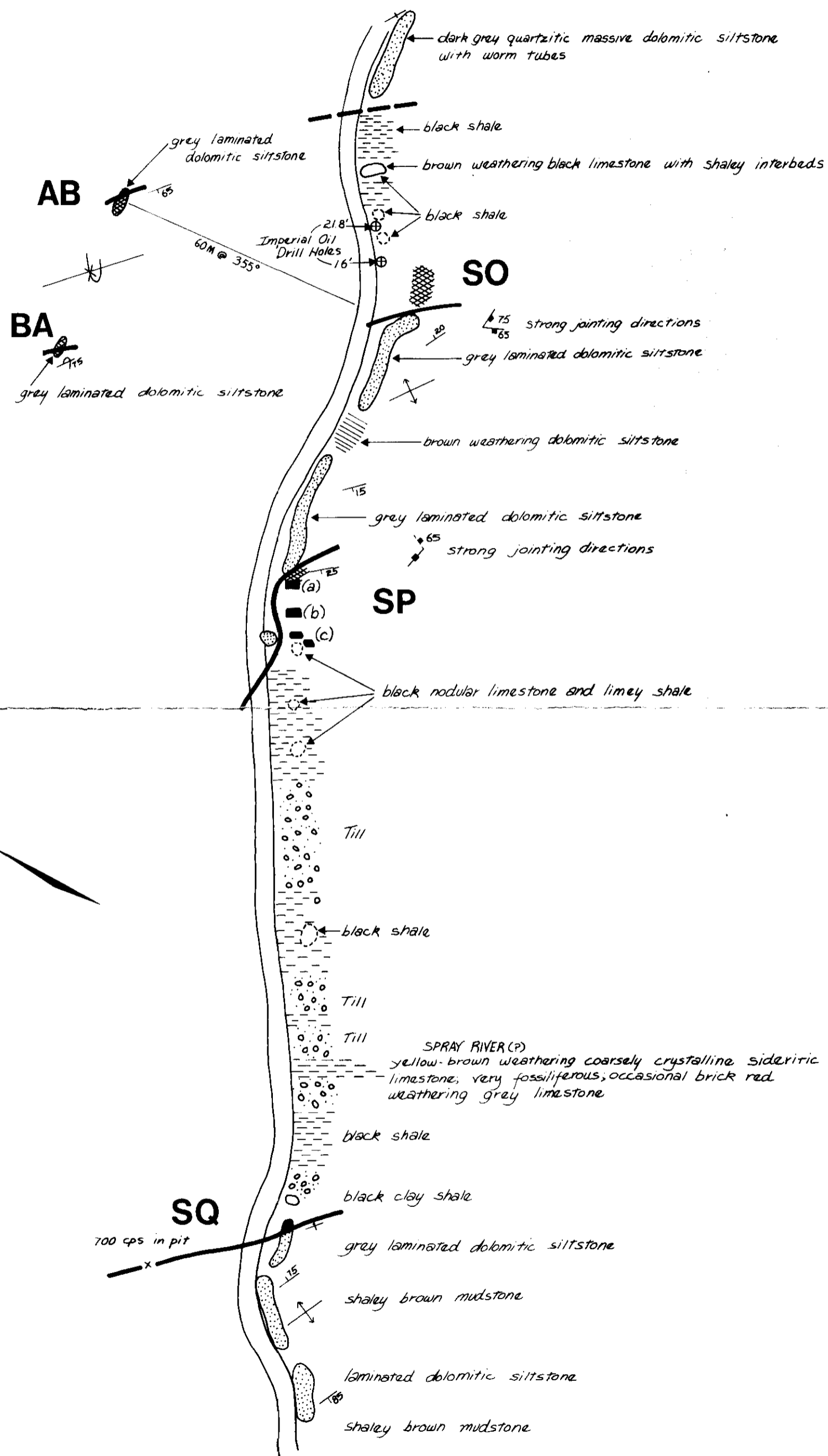
Scale:

Drawn By:

N.T.S.

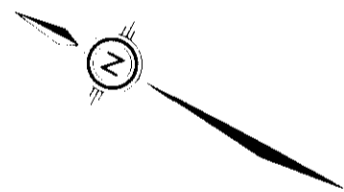
Date:

Checked By: GH



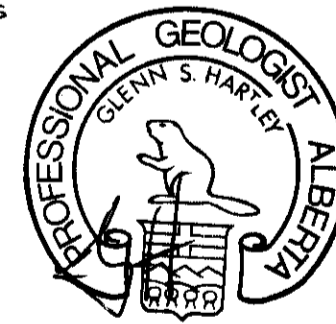
Legend

- glacial till, overburden
- Fernie Formation black shales, black nodular limestone
- oolitic phosphate
- Spray River Formation - laminated dolomitic siltstone, shaley brown mudstones, massive dark grey worm tubed dolomitic siltstone
- Contact: observed, inferred
- Bedding: normal, vertical, overturned
- Fold Axis: normal, overturned
- 218 ⊕ Imperial Oil Drill Hole @ footage
- Sample Trench



10,135
 112

part 2
of 2



Grid Reference: HB 16 June 1981 J. Slater

FIRST NUCLEAR CORPORATION

PROJECT:

Geological Map of the AB,
BA, SO, SP & SQ Areas

Dwg. No. 3

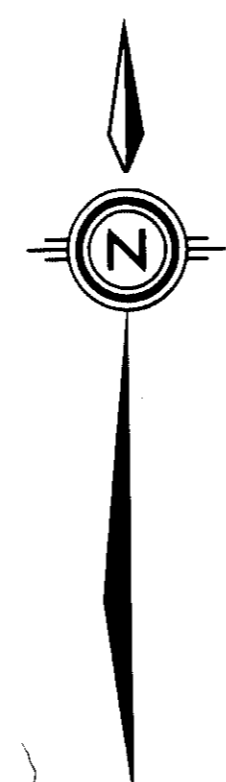
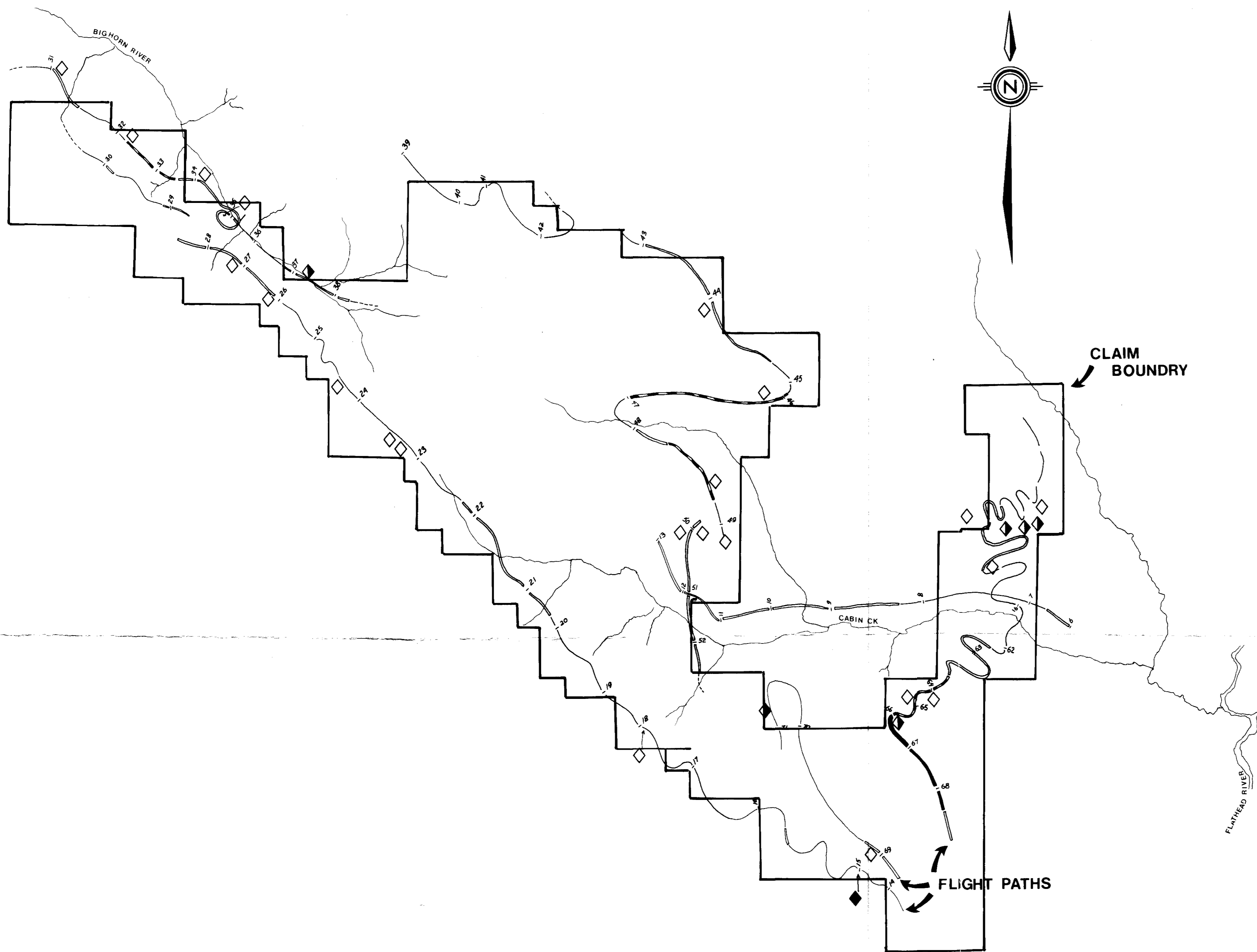
Scale: 1: 1000

Drawn By: pmv

N.T.S. 82G2

Date:

Checked By: gh



CLAIM BOUNDARY

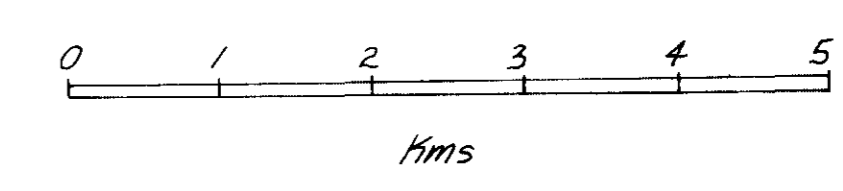
FLIGHT PATHS

Legend

- Bkgd. 1.6 to < 2.2 cms
- Bkgd. 2.2 to < 2.6 cms
- Bkgd. 2.6 to < 3.0 cms
- Bkgd. 3.0 to < 3.5 cms

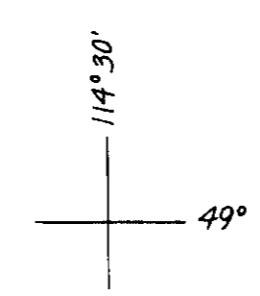
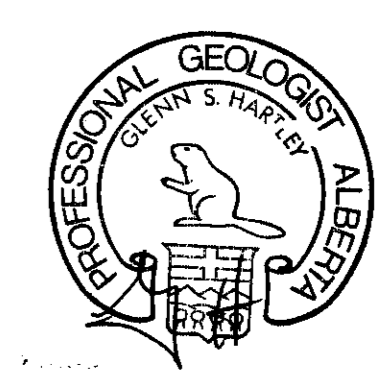
Point Anomalies

- 5mm to < 7mm above bkgd.
- 7mm to < 9mm " "
- 9mm to < 11mm " "
- Fiducial



10,135

part 2 of 2



FIRST NUCLEAR CORPORATION

PROJECT:
AIRBORNE RADIOMETRIC SURVEY

Dwg. No. 14 Scale: 1:50000 Drawn By: pmv
 N.T.S. 82G2 Date: Checked By: jlb



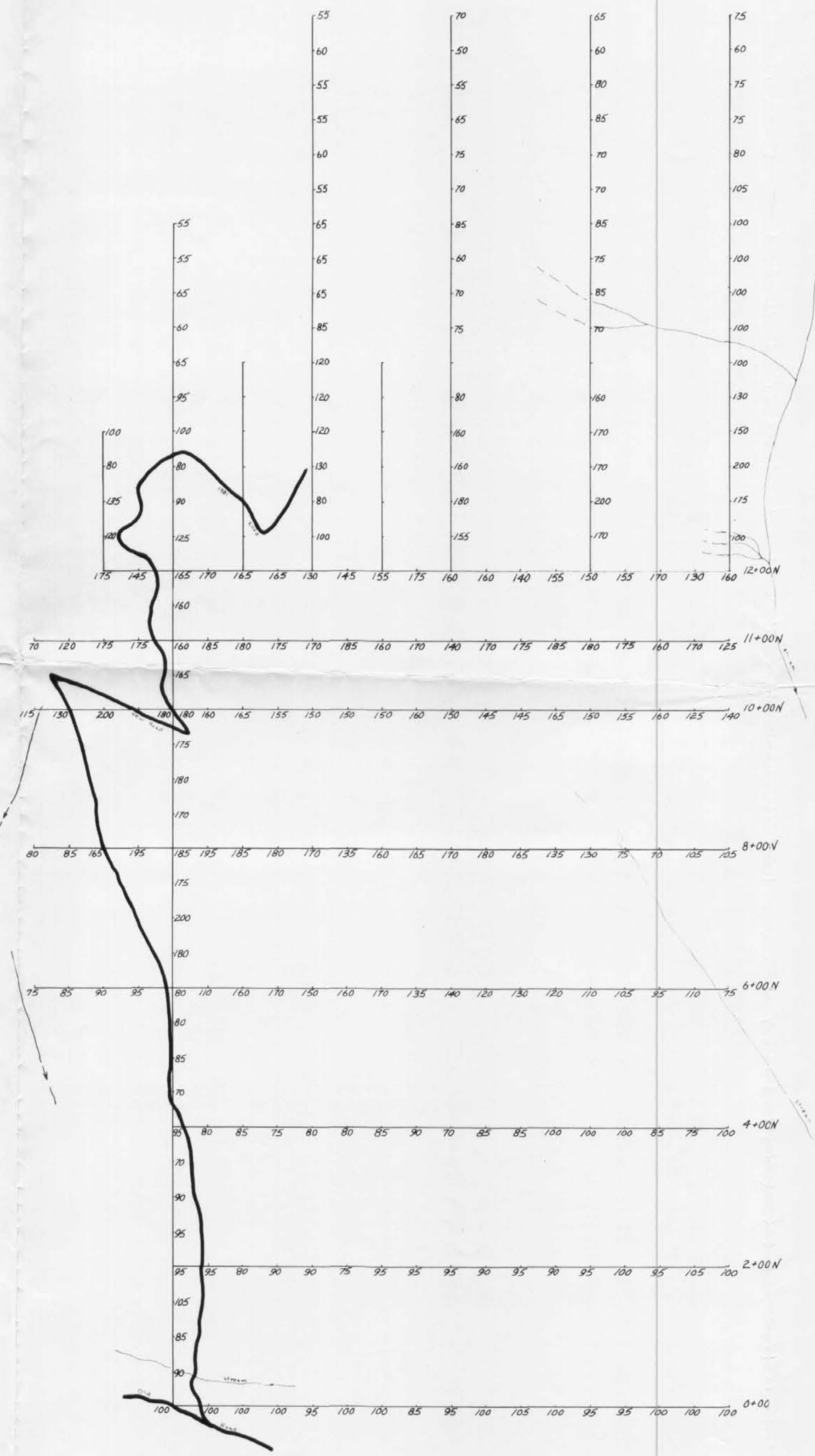
MINERAL RESOURCES BRANCH
APPROVED BY
10,135
NO.

part 2
of 2

FIRST NUCLEAR CORPORATION

PROJECT:

Dwg. No.12 Scale: Drawn By:
N.T.S. 82G2 Date: Checked By:

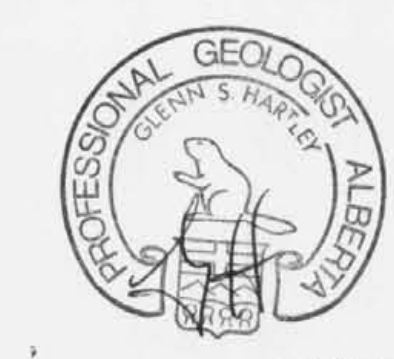


part 2
of 2

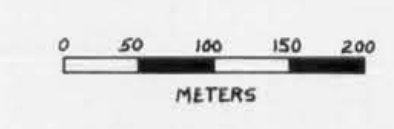
LEGEND

135 Counts per second

MINERAL RESOURCES BRANCH
ASSESSMENT REPORT
1Q135
NO.

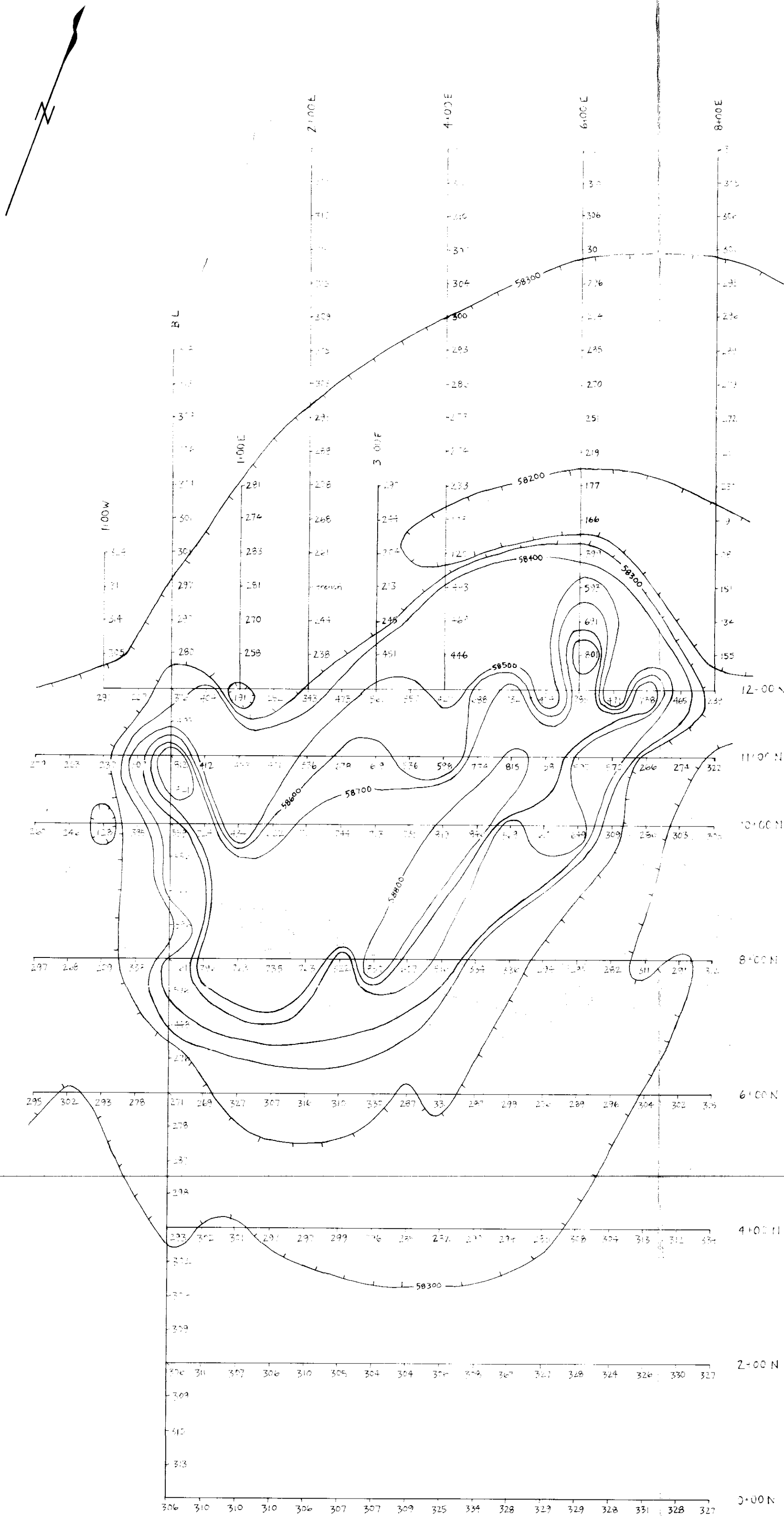


Radiometrics UG-135 Urtec Total Counts



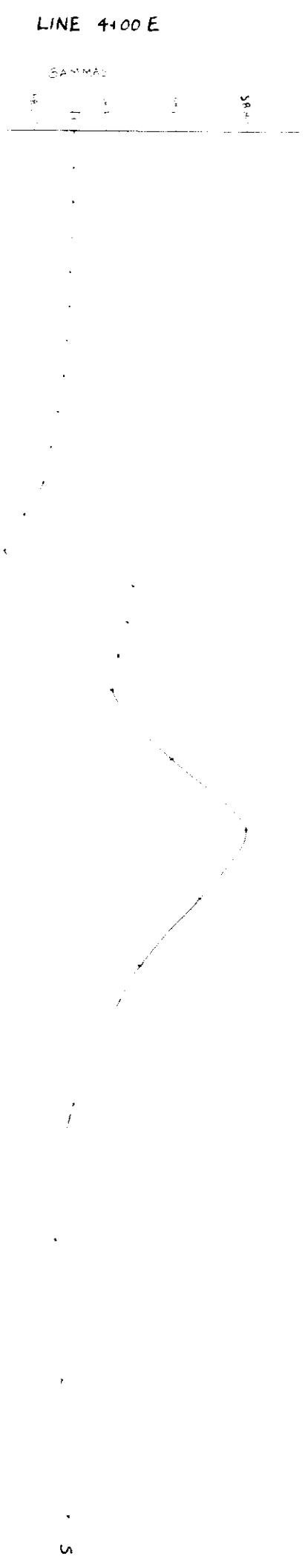
FIRST NUCLEAR CORPORATION
 PROJECT: Grid Radiometric Map
 Dwg. No. 8 Scale: 1cm=50m Drawn By: pmv
 N.T.S. 82 G 2 Date: Checked By: rf

MAGNETIC PROFILES



part 2
of 2

19135
No.



LEGEND

±254 magnetometer reading in gammas
NOTE: all values are preceded by 58 eg 58254
all values are corrected for diurnal variations
from base magnetometer data.



FIRST NUCLEAR CORPORATION
PROJECT: CONTOURED MAGNETOMETER
SURVEY, ZIP CLAIMS

Dwg. No. 7 Scale: 1 cm = 50 m Drawn By: J.H.
N.T.S. 82 G 7 Date: Oct. 26 / 81 Checked By:

10,135 part 2
of 2

*

FIRST NUCLEAR CORPORATION		
PROJECT:		
Dwg. No. 10	Scale: 18-000	Drawn By:
N.T.S. 82 G 2	Date:	Checked By: