

DIAMOND DRILL LOG
of the continuation of
D.D.H. # 79 - 1
drilled on the
ZZ # 7 Claim
of
China Commercial Corporation Ltd

situated
7 miles west of Kamloops, B.C.
in the
Kamloops Mining Division
N.T.S. 92I/9(W)
Lat: 50°41'N Long: 120°30'W

by

D.R. Morgan, P.Eng
Consulting Geologist

Date: 15 March 1982

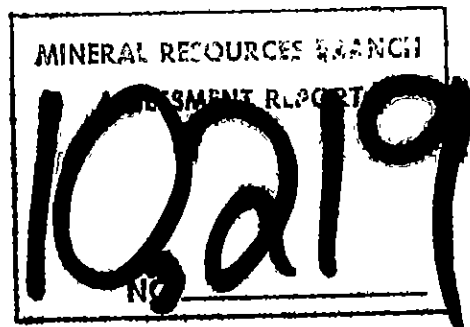


TABLE OF CONTENTS

		page
1 - 0	INTRODUCTION	1
2 - 0	CLAIMS	1
3 - 0	LOCATION OF THE PROPWRTY	1
4 - 0	LOCATION OF THE DRILL HOLE	1
	Property Location Map	2
	Claim Diagram	3
	Diamond Drill Hole Location Map	4
5 - 0	DRILL LOG	5
6 - 0	STATEMENT OF COSTS	9
7 - 0	CONTRACTOR'S LETTER	10
8 - 0	STATEMENT OF QUALIFICATIONS	11

1 - 0 INTRODUCTION: In February 1982 the writer was asked by Mr. Andy Joe, President of China Commercial Corporation Ltd., 1555 Franklin Street, Vancouver B.C., V5L 1P3, to conduct a diamond drill program on the Company's Kamloops area property.

It was decided to deepen further, diamond drill hole # 79 - 1 which was started in February 1979 and deepened in February of 1980 and 1981.

A vertical B.Q. wireline hole was drilled from 727 feet (222 m) to 830 feet (253 m) between 23 and 27 February 1982.

The writer logged the core which is now stored at the Company's office at 1555 Franklin Street, Vancouver, B.C.

2 - 0 CLAIMS: China Commercial Corporation holds title to the ZZ and Will claims as follows:

<u>Number</u>	<u>Name of Claims</u>	<u>Record Numbers</u>	<u>Years Applied</u>	<u>New C of W Due</u>
1	ZZ 2	78062	3	21 March 1985
6	ZZ 3 - 8	78063 - 68	2 each	" " 1984
3	ZZ 16,18,20	78074,-76,-78	2 "	" " 1984
2	Will 1 & 7	119464 & 70	2 "	June 1984
<hr/>				
12	Total			

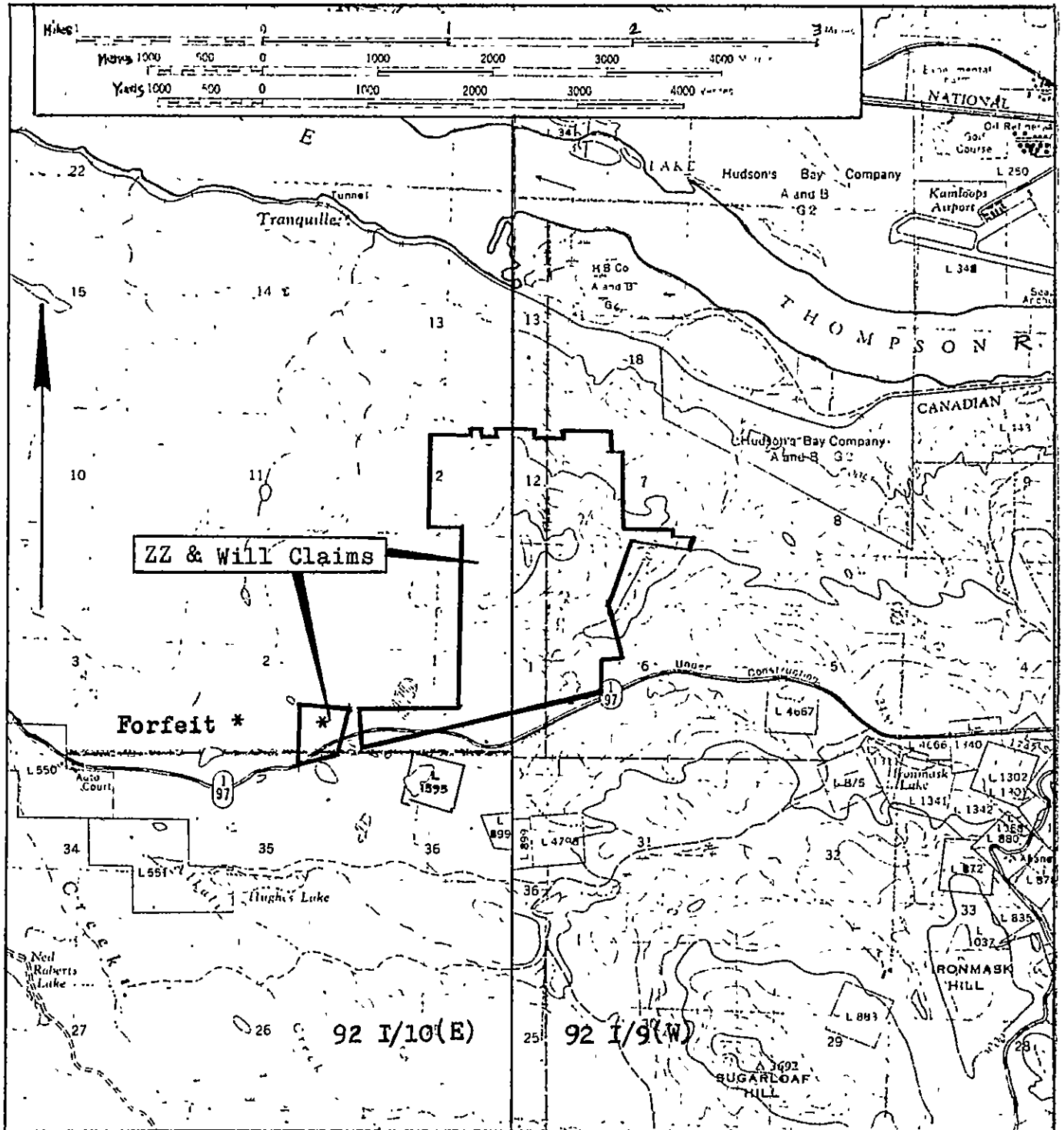
A Statement of Exploration and Development filed on March 1982 with this report is based on the work described herein. Acceptance of this work will put these claims in good standing as shown above.

The following claims are being allowed to lapse:

3	ZZ 15,17,19	78073,-75,-77
6	ZZ 27 - 32	78083 - 88
4	Will 2 - 5	119465 - 68
<hr/>		
13	Total	

3 - 0 LOCATION OF THE PROPERTY: The property is located 7 miles due west of Kamloops, B.C. It is in the Kamloops Mining District, straddles N.T.S. Areas 92-I/10(E) and 9(W) and has a latitude of 50°41' N and a longitude of 120°30' W.

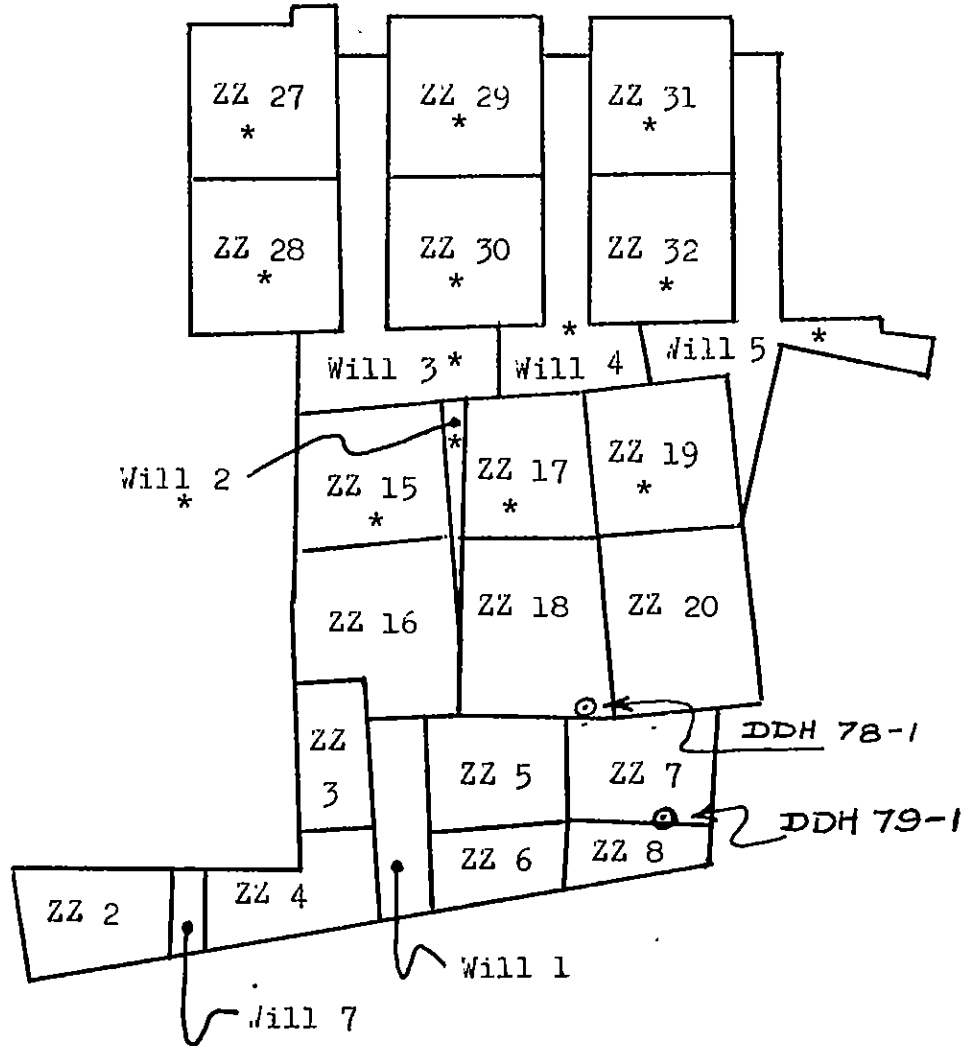
4 - 0 LOCATION OF THE DRILL HOLE: D.D.H. 79 - 1 is located 400 feet west and 2 feet north of the # 2 post of ZZ # 7 claim.



CHINA COMMERCIAL CORPORATION LTD
Property Location Map
 for
ZZ & Will Claims
Scale: 1:50,000
Date: 15 March 1982
By: D.R. Morgan, P. Eng.



* Lapsing in 1982



CHINA COMMERCIAL CORPORATION LTD

Claim Diagram

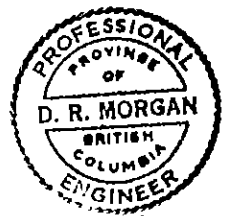
of

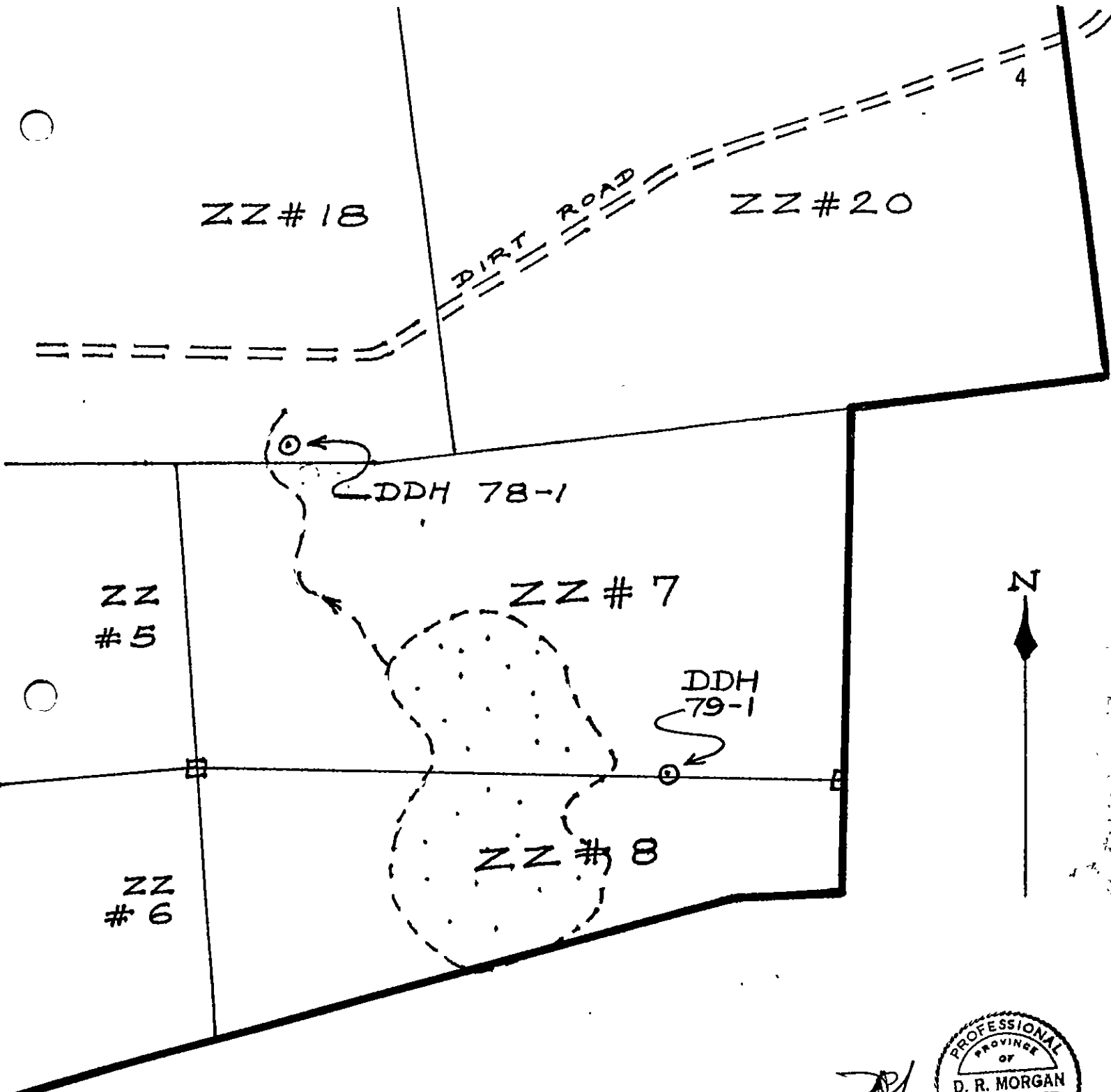
ZZ & Will Claims

Scale: 1" - 1500 feet

Date: 15 March 1982

By: D.R. Morgan, P. Eng.





[Handwritten signature]
PROFESSIONAL
ENGINEER
D. R. MORGAN
BRITISH COLUMBIA

CHINA COMMERCIAL CORPORATION LTD
"ZZ" Claims, Kamloops Area, B.C.
Diamond Drill Hole Location Map
Scale: 1" - 300 feet
Date: 15 March 1982
By: D.R. Morgan, P. Eng.

5 - 0 DRILL LOG:

SHEET 1
OF 3

DIAMOND DRILL LOG

HOLE #: 79 - 1

China Commercial	Company: Corporation
Property: ZZ	Lat: 50° 41' N
Claim: ZZ 7	Long: 120° 30' W
NTS: 92-1/9 (W)	

LOCATION	BEARING	LATITUDE	DEPARTURE	ELEVATION	DATE COMPLETED	RECOVERY: 85%
	727-830			2180	27 Feb '82	
DATE COLLARED	LENGTH				DIP	
23 Feb '82	727-830				90°	
REMARKS: Deepening of hole drilled in 1979, 1980 & 1981 (see AR# 7274)						
LOGGED BY: D.R. Morgan						
DATE: 11 March 1982						
SCALE OF LOG: 1" = 5 ft						
CORE SIZE: B.O. 17/16"						

CHINA
 Company: **COMMERCIAL CORP**
 Property: **ZZ**

Ulamc 111
 -J8

HOLE #: **79-1**

SHEET
 # 1

ROCK TYPES AND ALTERATION	GRAPHIC LOG		MINERALIZATION AND STRUCTURES	SPECIFIC GRAVITY	FOOTAGE BLOCKS	RECOVERY		ASSAY RESULTS				Sample length	
	ROCK TYPE ALTERATION	FOOTAGE				WT. IN GRAMS		SAMPLE No.		CORE	SLUDGE		COMBINED
						CORE %	SLUDGE %	CORE	SLUDGE				
START OF MARCH '82 DRILLING ANDESITE-CG Massive, dark grey. Appears like dyke intrusives with sub anhedral texture up to 1mm. K-spar alteration of feldspars & K-spar in narrow fractures common		725											
		727	-----										
		730											
		735				75%							
		740											
		745											
		750	contact 30°										
ANDESITE-F.G. massive, dark grey Aphanitic		755											
		760	20-2.1cm apite fracture fillings 2 dark slugs - 5cm										

CHINA COMMERCIAL
 Company: CORPORATION
 Property: ZZ

Diameter Drill
 2.8

HOLE #: 79-1

SHEET
 # 2

ROCK TYPES AND ALTERATION	ROCK TYPE ALTERATION	FOOTAGE	STRUCTURE	MINERALIZATION AND STRUCTURES	SPECIFIC GRAVITY	FOOTAGE BLOCKS	RECOVERY		ASSAY RESULTS			Sample length		
							WT. IN GRAMS		SAMPLE No.		CORE		SLUDGE	COMBINED
							CORE	SLUDGE	CORE	SLUDGE				
		760												
ANDESITE C.G. (AS from 7270m)		765		Contact Angular 1-3 cm fragments of ANDESITE CG surrounded by ANDESITE FG at contact.			86%							
				145° CONTACT										
ANDESITE FG (AS from 7490m)		770												
		775					83%							
		780												
ANDESITE C.G.		785		CONTACT (Attitude unclear)			84%							
		790												
		795					83%							

ROCK TYPES AND ALTERATION	GRAPHIC LOG		MINERALIZATION AND STRUCTURES	SPECIFIC GRAVITY	FOOTAGE BLOCKS	RECOVERY		ASSAY RESULTS			Sample length		
	ROCK TYPE ALTERATION	FOOTAGE				WT. IN GRAMS		SAMPLE No.		CORE		SLUDGE	COMBINED
						CORE	SLUDGE	CORE	SLUDGE				
						%	%						
ANDESITE CG (cont.)		795											
		800											
		805											
		810	45° 2-5mm aplitic (vfg qtz feldspar) fillings.										
		815	Hematite on fracture planes in broken core. Not strongly developed.										
		820											
ANDESITE FG		825	CONTACT (Attitude unclear) Irregular 1cm wide vug approx 45° with fg quartz druse										
		830	Very fg disseminated Pyrite (less than 0.5%)										
		830	END OF HOLE (FINAL)										

NOTE: Hole caved badly during year & will not be deepened further. This is the final end of this hole.

6 - 0 STATEMENT OF COSTS:

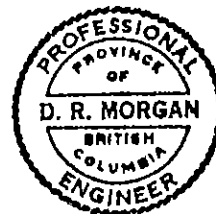
The following costs were incurred by China Commercial Corporation Ltd., in carrying out diamond drilling on its ZZ # 7 claim near Kamloops, B.C. between 23 and 27 February 1982:

<u>Diamond Drilling:</u> Drilling out caved sections of hole down to 727 feet and drilling 103 feet of B.Q. wireline from 727 feet to 803 feet:	\$4,250.
<u>Geologist:</u> (D.R. Morgan) Logging core and report writing, 3 days at \$250/day:	750.
<u>Core shipping and storage:</u>	50.
	<u>\$ 5,050.</u>

Signed,



 David R. Morgan, Geologist, P.Eng.
 Vancouver 15 March 1982



H. ALLEN DIAMOND DRILLING LTD.

TELEPHONE 378-4494

P.O. BOX 1397
MERRITT, B.C.

INVOICE NO 656.

Feb, 28, 1982.

To: China Commercial,
155 Franklin St.,
Vancouver, B.C.

In Account With:

H. Allen Diamond Drilling Ltd.,
Box 1397,
Merritt, B.C. VOK 2B0.

This invoice is for drilling at your property near Kamloops.

Mobe cost.....	\$ 300.00
Drill mud - 50 bags @ \$8.00 per bag.....	\$ 400.00
Feb. 24 - 25 ten hours each day mudding, reaming and conditioning old drill hole - 20 hours @ \$75.00 per hour.....	\$ 1,500.00
Core drilling from 727 ft. to 830 ft. - 103 ft @ \$20.00 per ft.....	\$ 2,060.00
	<u>\$ 4,260.00</u>

Contractor's Representative

Company's Representative

H. Allen

8 - 0 STATEMENT OF QUALIFICATIONS:

I, David R. Morgan of 3424 West 6th Avenue, Vancouver, B.C. V6R 1T3, do hereby certify that:

1. I am a 1954 graduate of McGill University, Montreal, Quebec, with a Bachelor of Science degree in Honours Geology.
2. I am a registered member in good standing of the Association of Professional Engineers of the Province of British Columbia.
3. I am a Consulting Geologist.

Signed,



David R. Morgan, Geologist, P. Eng.

15 March 1982

Vancouver, B.C.

