



**WELCOME NORTH MINES LTD.**

1027 - 470 Granville St., Vancouver, B.C. V6C 1V5 • Telephone (604) 687-1658

PHYSICAL WORK, GEOCHEMICAL  
SURVEY AND PROSPECTING REPORT  
FOR THE

GRIZZLY 1-4 CLAIM GROUP

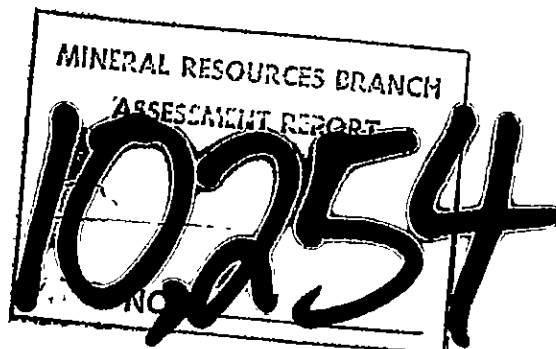
SLOCAN MINING DIVISION  
N.T.S. 82K/4 East and West

Latitude 50°07'

Longitude 117°43'

By Owner-Operator Ralph Allen

Nakusp, B. C.



January 8, 1982

TABLE OF CONTENTS

	Page
INTRODUCTION	
General Geology	1
History of Property	1
Topography	1
PROPERTY DESCRIPTION	
Location and Access	1
Claims Inventory	2
WORK PROGRAM DESCRIPTION	
Introduction	2
Geology of Claims	3
Physical Work	3
Geochemical Survey	3
Prospecting Report	4
STATEMENT OF EXPENDITURES	5
PLATES:	
PLATE NO. 1 - GEOCHEMISTRY	In Pocket
PLATE NO. 2 - GEOLOGY	In Pocket

## INTRODUCTION

### GENERAL GEOLOGY

The Property is mainly underlain by a Slocan and Jurassic Rosland Group of meta-sedimentary and meta-volcanic units - mainly argillites and greenstones that have been intruded by the dioritic Mountain Meadow Plutons. A rhyolite-rhyolite porphyry found half way along Windy Creek forms a minor constituent of the group.

### HISTORY OF PROPERTY

Some interest in the past prompted staking small areas which are within this group. However, no production or assay results have ever been published on them.

Interesting float rocks on the streams on the north side of Silver Mountain and similarity to the host rocks of other mineral showings in the Caribou Creek area led to the staking of this area.

### TOPOGRAPHY

The north slope of Silver Mountain is very rugged and steep, with many rock bluffs. Much of the timbered area is an old burn consisting of dense scrub spruce and balsam 2-3 metres tall, with large windfalls. Any mature timber is confined to narrow strips between slide shoots. Ground work is less hindered in the mature portions of the stands.

### PROPERTY DESCRIPTION

#### LOCATION AND ACCESS

The GRIZZLY Claim Group covers some rolling alpine on top of Silver Mountain west of the peak and continues down the north slope of Silver Mountain towards Slewiskin Creek. Access is from Highway 6, approximately 8 km south of Nakusp, BC, then via the Slewiskin Forest Access road, approximately

LOCATION AND ACCESS (cont'd.)

for 8 km. This route continues up Slewiskin Creek to the first creek before the first bridge crossing of the main Slewiskin Creek.

A cut access trail leads up the mountain and intersects the old MILLIE MACK rawhide trail. This trail led through the heart of the Property and continues over the height of land and joins the roads to the MILLIE MACK Property from Burton, BC. The roads to the MILLIE MACK Property from Burton are an alternate access route to the GRIZZLY Property.

CLAIMS INVENTORY

<u>CLAIM NAME</u>	<u>RECORD NO.</u>	<u>NO. OF UNITS</u>	<u>DATE STAKED</u>	<u>EXPIRY DATE</u>	<u>TAG NO.</u>
GRIZZLY #1	2467	20 Modified Grid	5/3/81	25/3/82	60561
GRIZZLY #2	2468	20 Modified Grid	5/3/81	25/3/82	60562
GRIZZLY #3	2469	20 Modified Grid	5/3/81	25/3/82	60563
GRIZZLY #4	2470	16 Modified Grid	5/3/81	25/3/82	60564

WORK PROGRAM DESCRIPTION

INTRODUCTION

An investigation of this area was prompted by similarities of the geological features to those of other mineral showings in the Caribou Creek area, east of Burton, BC.

First year work included 4.2 km of access trail cutting, 6.9 hectares of reconnaissance prospecting, grass roots geochemical surveys and rock chip geochem consisting of 71 samples in all.

WORK PROGRAM DESCRIPTION (cont'd.)

GEOLOGY OF CLAIMS

Host rocks are lower Jurassic Slocan Group argillites and greenstones (andesite and rhyolite - rhyolite porphyry) which have been intruded by dioritic rocks of the Mountain Meadow Plutons. The plutons consist of quartz-diorite porphyry, but become finer-grained near the contacts with the argillites and greenstones. Some hornfels have been developed in the argillites at the contact with the quartz diorite intrusives. Quartz sulphide veining from 2 to 60 cm wide are most abundant in the quartz-diorite and the rhyolite porphyries.

Some small quartz fissure fracture fillings barren of visible sulphides but with black vugs occur in the andesite units and rock chip geochems; these to run between 35-70 ppb gold compared to 5-10 ppb gold in the quartz of the other rock units.

A roof pendant of argillites occur east of Windy Basin with dimensions of approximately 1,000 metres east-west by 400 metres north-south by 90 metres vertically. This argillite roof pendant has a hornfeled contact with the quartz-diorite.

PHYSICAL WORK

4.2 km of access trails were cut between May 1, 1981 and October 31, 1981. Approximately 100 metres of the old rawhide trails was repaired and re-graded; especially so in the slide shoots.

GEOCHEMICAL SURVEY

Two lines contoured to the relief were run. These are referred to as contour line #1 (CL #1) and contour line #2 (CL #2). The lines were placed

GEOCHEMICAL SURVEY (cont'd.)

on the newly renovated rawhide trail. They continued off the slashed trail at certain switchbacks in order to maintain a reasonable contour. A sample spacing of 100 metres was used and samples were analyzed for Ag, As, Au and Mo, with selected pulps being run for Cu, Pb and Zn. Some rock chip samples were taken on reconnaissance prospecting traverses although no grid pattern was established with these samples and the results of which have been generally referred to in the Geology of Claims portion of this report.

Very little interpretation of geochemical results was needed due to the single line nature of this survey.

PROSPECTING REPORT

Prospecting and reconnaissance geology was carried out in the vicinity of Windy Basin, Windy Creek and in the immediate area of the two contour lines. The findings are shown on the maps in the folder at the end of this report.

STATEMENT OF EXPENDITURES

Assays & Geochem:

71 samples, 7 element analysis @ \$5.38/sample \$ 381.98  
(Min-En Laboratories)

Camp Maintenance:

Board costs - 1 man, 21 days @ \$25.00/day 525.00

Field Equipment:

As per invoice - Pearson and Gallagher, July 7/82 296.27

Fuel:

Truck gas as per invoices - June 10, 22, 25  
July 7, 9, 10, 12 158.16

Linecutting:

Chainsaw costs - Shaw's Equipment, June 29/82 \$ 152.94  
Contract - Kurt Dietreman, July 27/82,  
24 hours @ \$10/hour 240.00 392.94

Maps, Printing, Drafting:

Contract Drafting - 14 hours @ \$18/hour \$ 252.00  
Typing, copying, secretarial - 3 hours  
@ \$15/hour 45.00 297.00

Rotary Wing:

Terr-Air invoices - July 27 - 1 hour \$ 452.00  
September 27 - 0.9 hour 425.00 877.00

Salaries:

Prospector - Ralph Allen - 21 days @ \$104.02/day 2,184.42

STATEMENT OF EXPENDITURES (cont'd.)

Supervision:

John S. Brock - 3 days @ \$250.00 per day	\$ 750.00	\$
W.J. Crawford - 2 days @ \$125.00 per day	<u>250.00</u>	1,000.00

Geochemical Surveys:

Contract Labour - July 30 invoice, S. Allen		
18 hours @ \$6.00/hour	\$ 108.00	
August 10 invoice, K. Dietreman		
25 hours @ \$10.00/hour	<u>250.00</u>	358.00

Transportation:

Truck rental, R. Allen - 21 days @ \$12.22/day		256.62
--	--	--------

Administration:

\$6,717 costs x 10%		<u>672.00</u>
---------------------	--	---------------

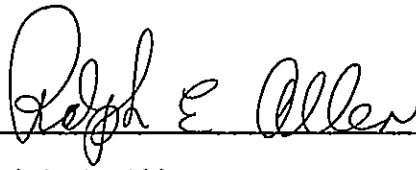
Total Costs -		<u><u>\$ 7,399.39</u></u>
---------------	--	---------------------------



STATEMENT OF QUALIFICATIONS

I, RALPH E. ALLEN, of Box 657, Nakusp, British Columbia, do certify that:

- 1) I am presently active in the mining industry as a prospector.
- 2) In the 1979 field season I learned the fundamentals of geology while in the employ of BRENDA MINES LTD. My duties were:
  - 1) grid establishment and linecutting;
  - 2) geochemical sampling;
  - 3) reconnaissance geological mapping;
  - 4) reconnaissance prospecting
- 3) In January, 1981, I completed a rock and mineral identification course given by Georgie Adie, Resident Government Geologist, from Nelson.
- 4) From May 1, 1981 to October 31, 1981, I was employed by WELCOME NORTH MINES LTD. as a prospector.

  
\_\_\_\_\_  
Ralph E. Allen  
Prospector

82 K 4E 3

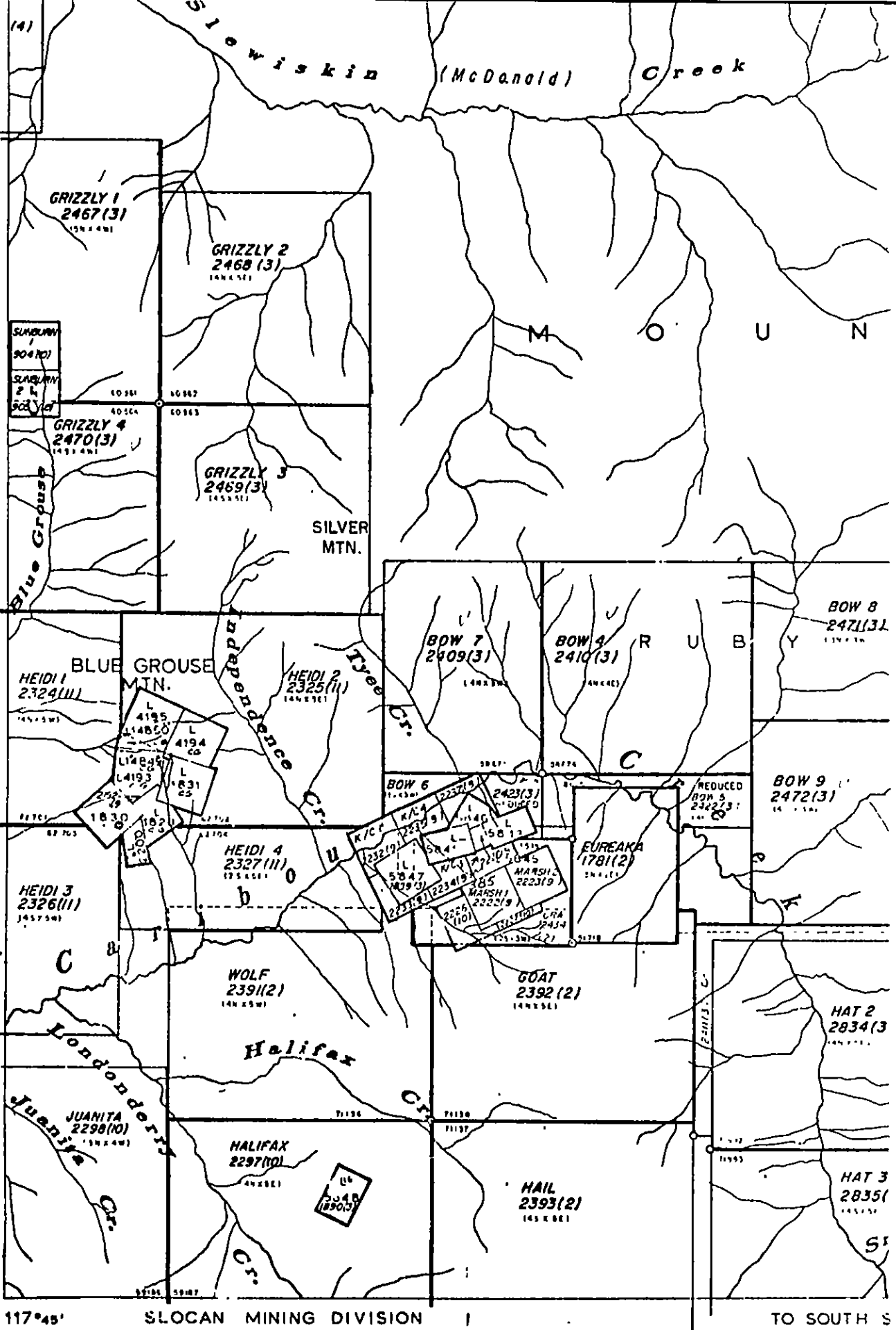
TO WEST SEE MAP (4)

2

CLAIMS MAP 1500'

1

50°00'



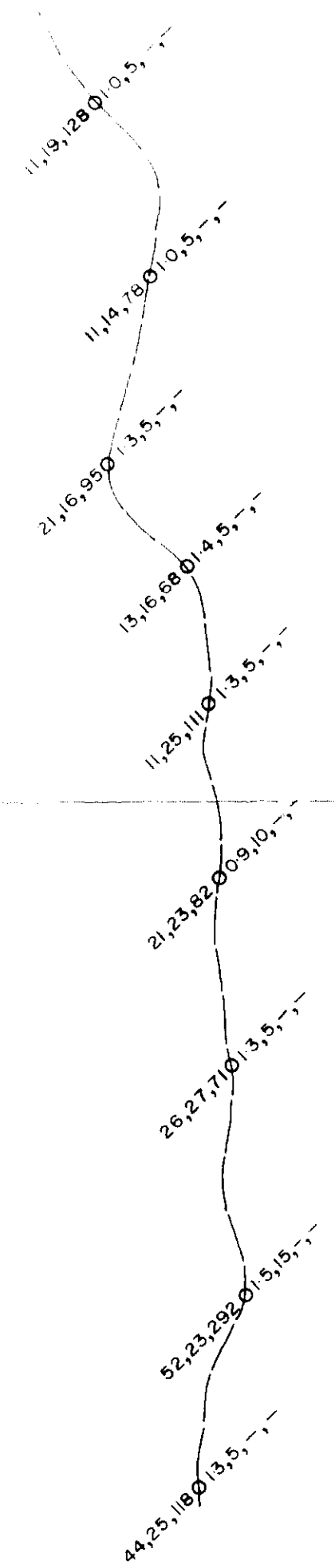
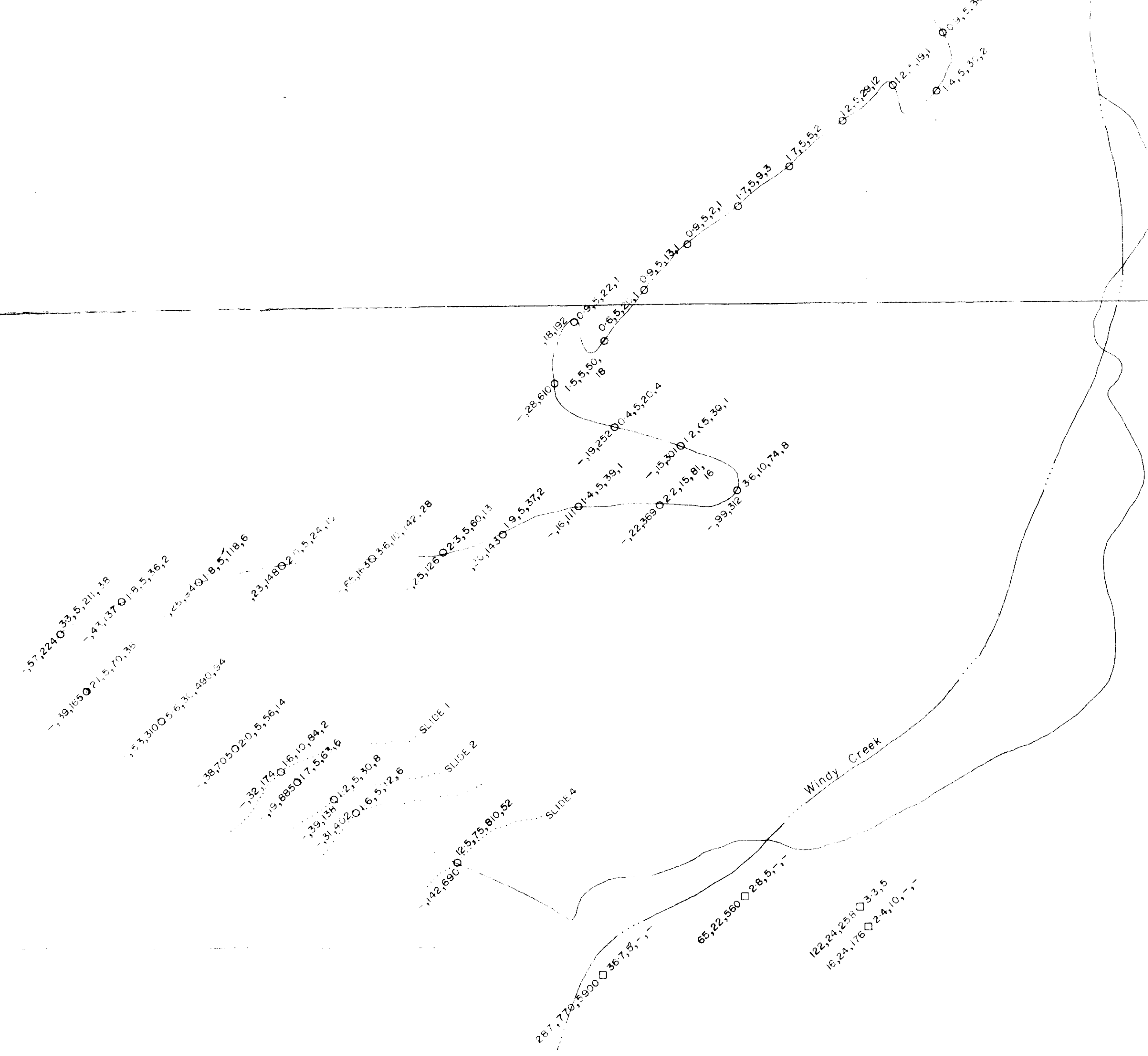
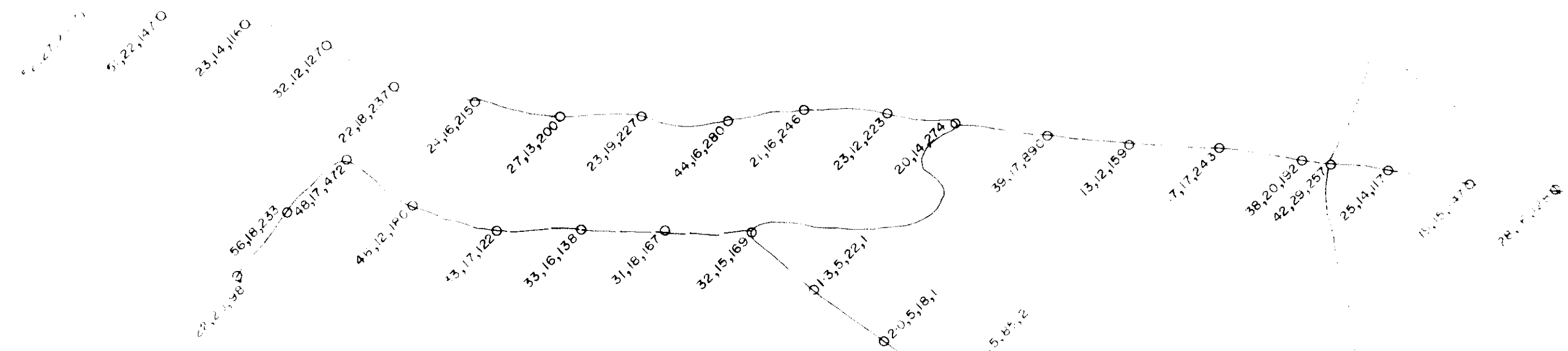
117°45'

SLOCAN MINING DIVISION 1

TO SOUTH S

For up-to-date information

DEPARTMENT OF MINES



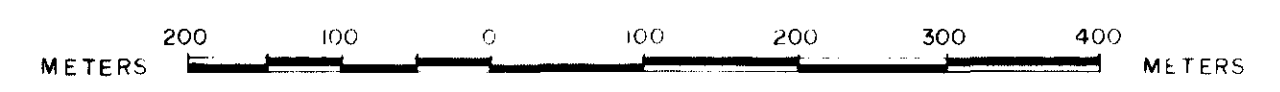
L E G E N D

- Cu, Pb, Zn ◯ Ag, Au, As, Mo
- Au values plotted in ppb, all other values in ppm
- CREEK -----
- FLAGGED LINE -----
- CUT LINE -----
- SOIL SAMPLE LOCATION ◯
- ROCK CHIP SAMPLE LOCATION ◻

**10254**

Cu, Pb, Zn, Au, Ag, As, Mo  
GEOCHEMISTRY

N.T.S. 82 K/4  
Scale 1:5000



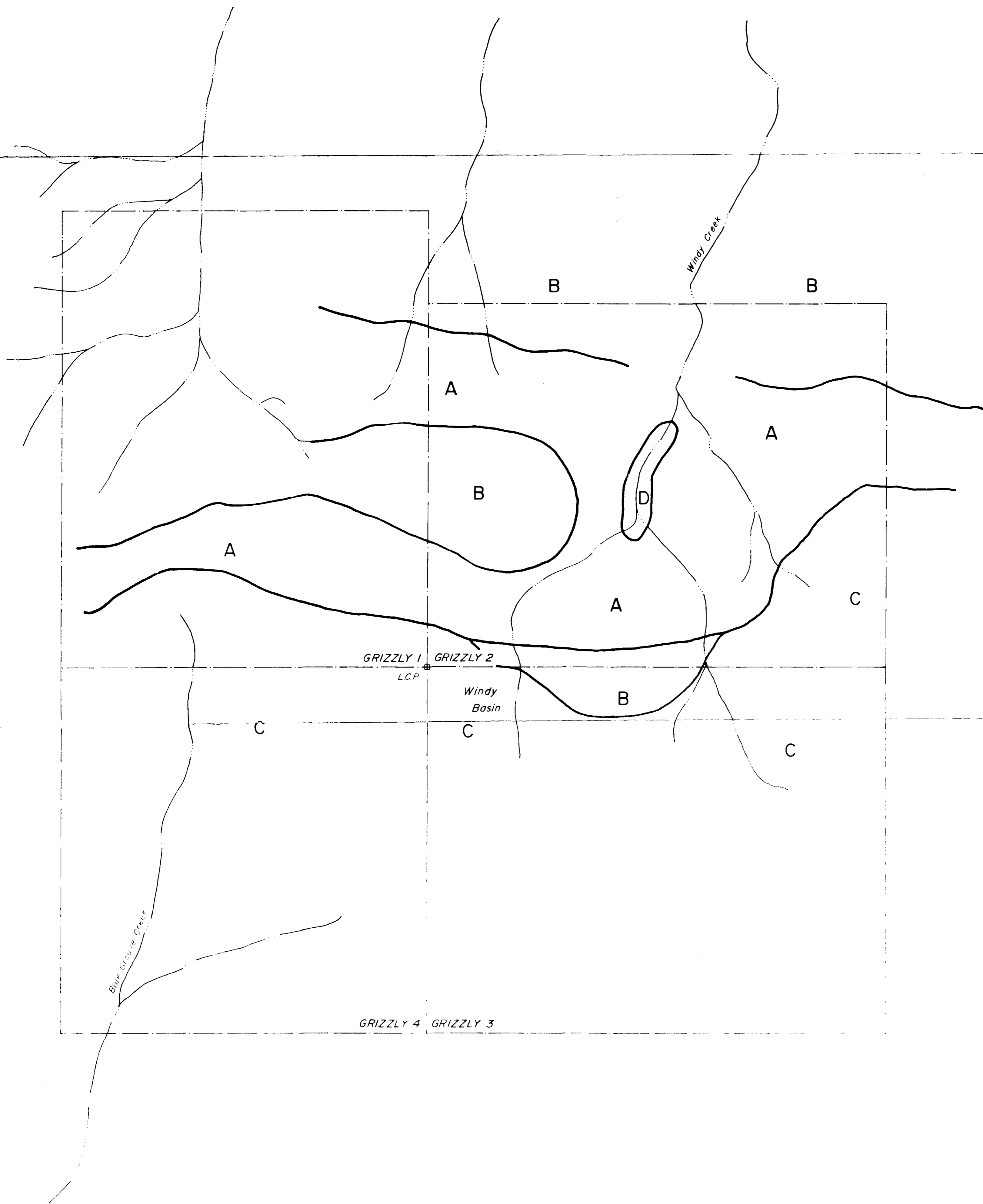
Drawn by R. ALLEN

DECEMBER, 1981

PLATE 1

1 GRIZZLY  
2 GRIZZLY  
3 GRIZZLY  
4 GRIZZLY

SLIDE 1  
SLIDE 2  
SLIDE 4



L E G E N D

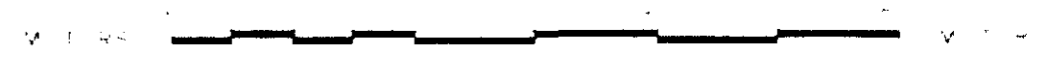
- A Granite, granodiorite and quartz diorite, Mountain Meadow Flutors
- B Argillite, probably Slocan Series
- C Greenstones, probably Kispiox Series
- D Rhyolite and rhyolite porphyry, series unknown

- REGULATORY DISTRICT
- CLAIM BOUNDARY
- STREAMS

10254

GRIZZLY CLAIM GROUP  
GEOLOGY

N.T.S. 42 K-4  
Scale 1:25,000



Drawn by R. ALLEN