

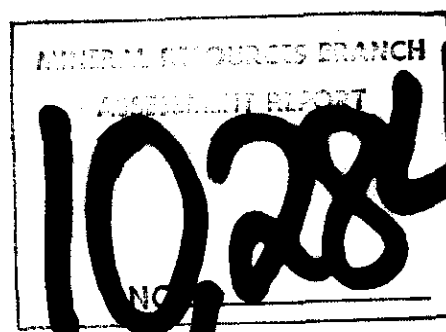
DRILLING  
ASSESSMENT REPORT  
LARCH GROUP  
FORT STEELE M.D.  
N.T.S. 82G/4W

Owner: St. Eugene Mining Corp. Ltd  
Operator: St. Eugene Mining Corp. Ltd.

Author: John R. Wilson

Date Submitted: April 14, 1982.

*John R. Wilson*

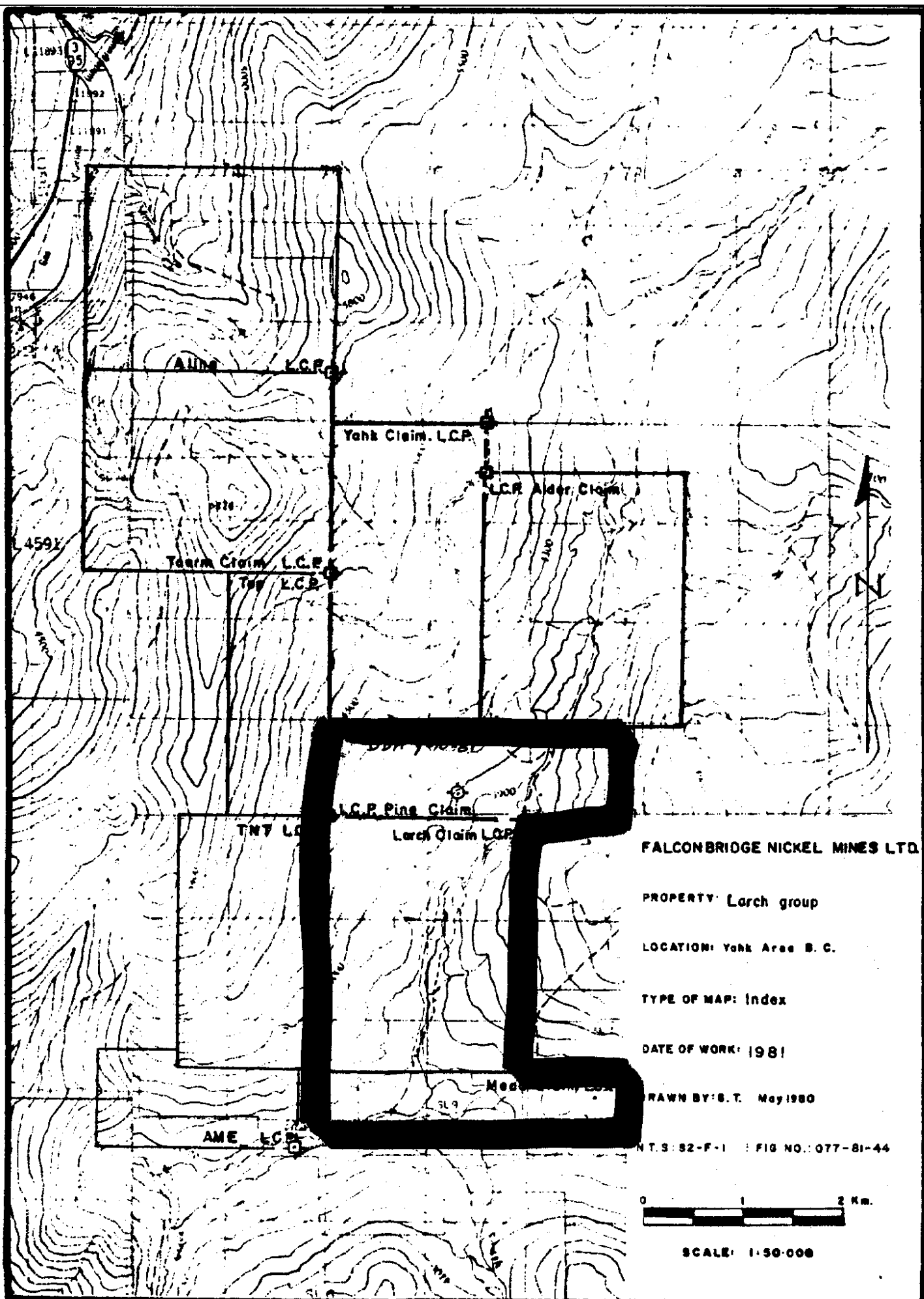


## TABLE OF CONTENTS

	<u>Page</u>
INTRODUCTION .....	2
GENERAL GEOLOGY .....	2
CONCLUSIONS .....	2
DRILL LOG .....	4
STATEMENT OF COSTS .....	6
STATEMENT OF QUALIFICATIONS .....	7

## Figures

Figure 077-81-44 (Index Map) .....	1
Figure 077-81-45 (Drill Hole Location) .....	In pocket



FALCONBRIDGE NICKEL MINES LTD.

PROPERTY: Larch group

LOCATION: Yaha Area B. C.

TYPE OF MAP: Index

DATE OF WORK: 1981

DRAWN BY: S. T. May 1980

NTS: 52-F-1 : FIG NO.: 077-81-44

0 1 2 Km.

SCALE: 1:50,000

## INTRODUCTION

The Larch Group of mineral claims consists of Larch (20 units), Pine (12 units), and Mead (8 units). Claims were staked in 1979.

The property is located approximately eight Kilometres east of the town of Yahk, B. C. It covers all the lower slopes of Cold Creek Valley north of Hawkins Creek. It is southeast of Mount Mahon. Access is by logging roads that leave the Hawkins creek road.

One vertical BQ diamond drill hole was run to a depth of 79.5 metres on the Pine claim for lithologic information.

The owner and operator is St. Eugene Mining Corp. Ltd.

## GENERAL GEOLOGY

Bedrock geology consists of middle (?) Aldridge formation sedimentary rocks of the Lower Purcell Supergroup (grey quartzites, argillaceous quartzites, siltstones, and argillaceous siltstones). Outcrops exhibit a 15-20° north-easterly dip. Purcell sills and dykes (diorite-gabbro) intrude the Aldridge Formation in places.

Metamorphism and deformation of lithologies is minor.

## CONCLUSIONS

No economic mineralization or fresh core was recovered by drilling. A thick layer of clay-rich overburden and well weathered bedrock underlies the area.

ABBREVIATIONS

T	Tourmalinite
s	silty
a	argillaceous
arg.Q(a.Q.)	argillaceous quartzite
Q	quartzite
A	argillite
S	siltstone
diss.	disseminated
qz. v.	quartz vein
py.	pyrite
occ.	occasional
Tr.	trace
dia.	diameter
qz.	quartz
v.f.g.	very fine grained
po.	pyrrhotite
f.g.	fine grained
calc.	calcite
cpy.	chalcopryrite
m.g.	med. grained
c.g.	coarse grained
fr.	fracture
H.	hard
mod.	moderate
med.	medium
w.	with
@	at
G.B.	graded bed
mass.	massive
bi	biotite
gar.	garnet.

U.T.M.  
5436070

NORTH ----- STARTED 14 June/81

EAST 576100 COMPLETED 16 June/81

ELEV. 3975' (1211m) LENGTH 261' (79.5m)

BEARING vertical

DIP -90° @ collar D.J. Drilling. BBS1, BQ core

# FALCONBRIDGE DIAMOND DRILL RECORD

PROPERTY

Yahk Area Claims

PURPOSE For lithologic HOLE No. Y-10-81  
information CLAIM Pine

SECTION

OFFSET

LOGGED BY J. Wilson

PLOTTED

FOOTAGE	DESCRIPTION	SAMPLE	FOOTAGE	C.L				
0 - 51.8m	CASING in overburden. Core recovery from 11.9 to 19.5m and 23.3 to 44.8m							
0 - 53.9m	OVERBURDEN boulders and clay							
	11.9 - 12.5 Medium grained diorite							
	12.5 - 13.4 Clay with angular pebbles of diorite, siltstone, argillite and hard purplish quartzite.							
	13.4 - 13.7 Coarse grained diorite							
	13.7 - 16.1 Clay with pebbles as above							
	16.1 - 16.3 Medium grained diorite							
	16.3 - 16.5 Clay as above							
	16.5 - 16.8 Hard argillic quartzite							
	16.8 - 53.9 8 to 20 cm random lengths/sections of following: 40% fresh appearing medium to coarse grained diorite							
	50% clay with angular pebbles of diorite, brownish siltstone/argillite, minor quartzite.							
	10% argillaceous quartzite & siltstone - most very hard							
	52.7 6 cm of rusty, soft diorite.							
53.9 - 79.5	VERY SERICITIC CLAY AND SERICITIC ARGILLITE/SILTSTONE							
END	Minor quartzite. In 1 to 20cm lengths, usually 4cm lengths. No diorite. Core is well broken, very soft and rusty (orange, red, brown) fractures at 10°, 25° 40°, 50°. Reddish coated fractures @ 30° @ 64m							
	Drilling stopped due to excessive caving.							

HOLE No. Y-10-81

[illegible]

STATEMENT OF COSTS

Diamond Drilling

June 13:-	Haul drill to site with D7 (10hrs @ \$50.00/hr.	500.00
June 14-16:-	Drilling	8367.13
June 13,17,18	Mobilization, demobilization, downtime. 4 men (Total of 60 man hrs @ \$19.00/hr	1140.00
June 13-18:-	Room and board (4 men) Total of 24 man days at \$44.25/man day	1062.00

Logging core and Supervision (June 13-18)

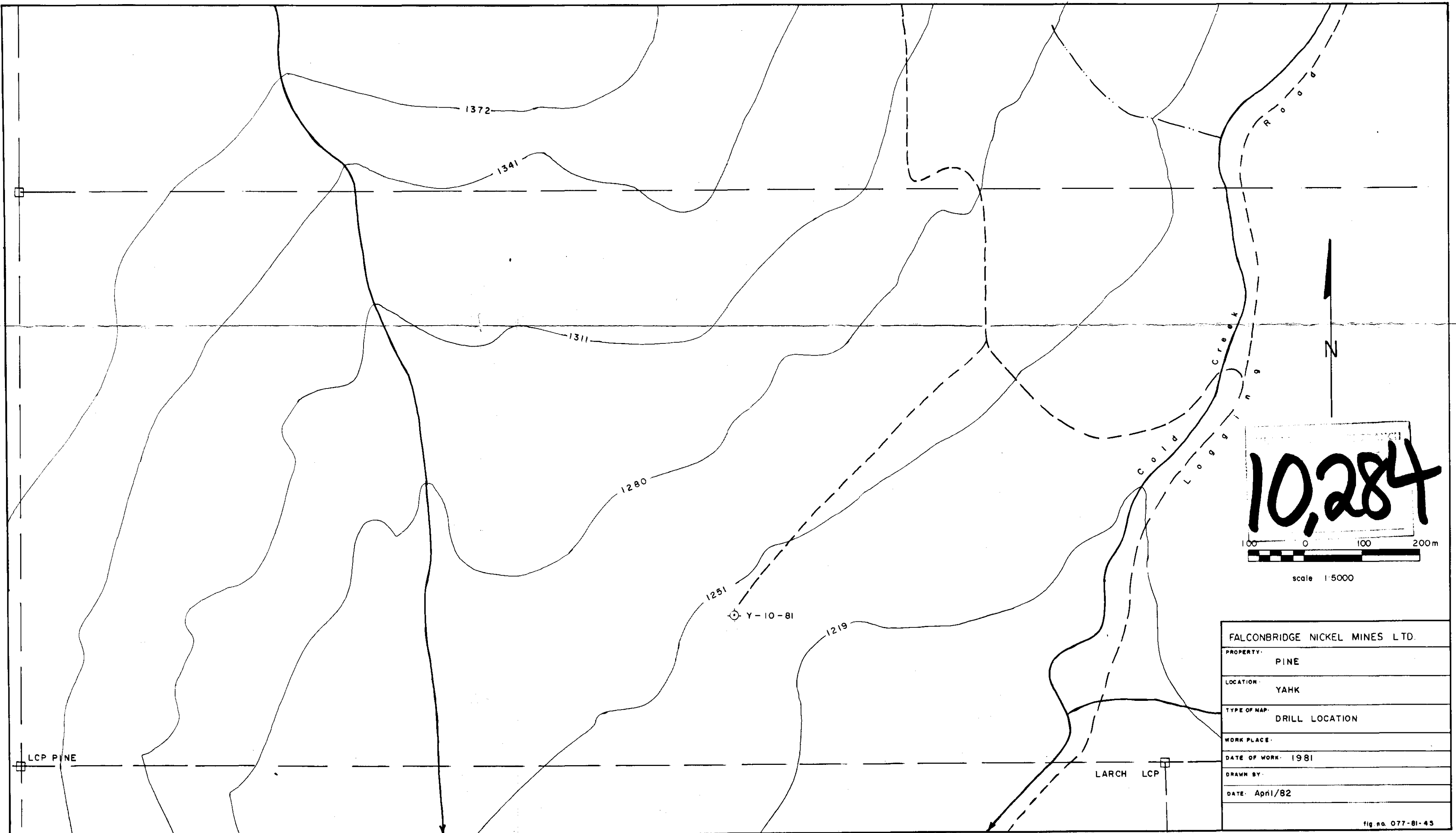
1 Geologist 6 days @ 110.00/day	660.00
Room and board 6 days @ \$20.00/day	120.00
Truck expenses 6 days @ \$30.00/day	180.00
Report typing, drafting, assembly ½ day @ \$80.00/day.	40.00

TOTAL DRILL COSTS	<u>\$12069.13</u>
-------------------	-------------------



STATEMENT OF QUALIFICATIONS

John R. Wilson graduated from the University of British Columbia in 1972 with a B.Sc. (honours geology) and has worked for the Falconbridge Nickel Mines group of companies as an exploration geologist since graduation.



FALCONBRIDGE NICKEL MINES LTD.	
PROPERTY:	PINE
LOCATION:	YAHK
TYPE OF MAP:	DRILL LOCATION
WORK PLACE:	
DATE OF WORK:	1981
DRAWN BY:	
DATE:	April/82
fig no. 077-81-43	