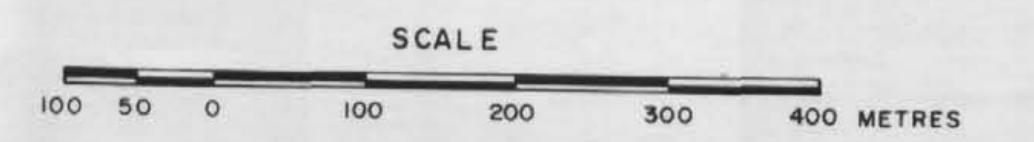


LEGEND

- Soil sample site location - S.M.D. Mining Co. Ltd. 1981
- Soil sample site location - Imperial Oil Ltd. 1972
- ≥40 ppm Mo
- ≥20 ppm Mo
- ◆ Diamond drill hole
- Percussion drill hole

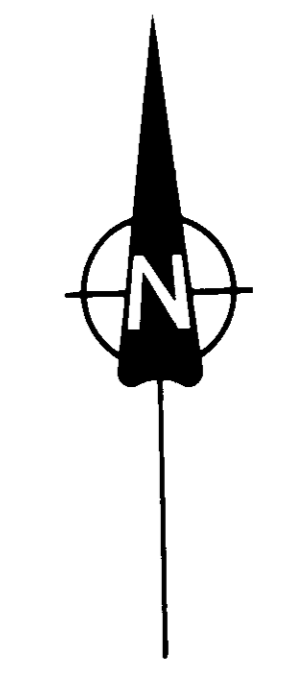
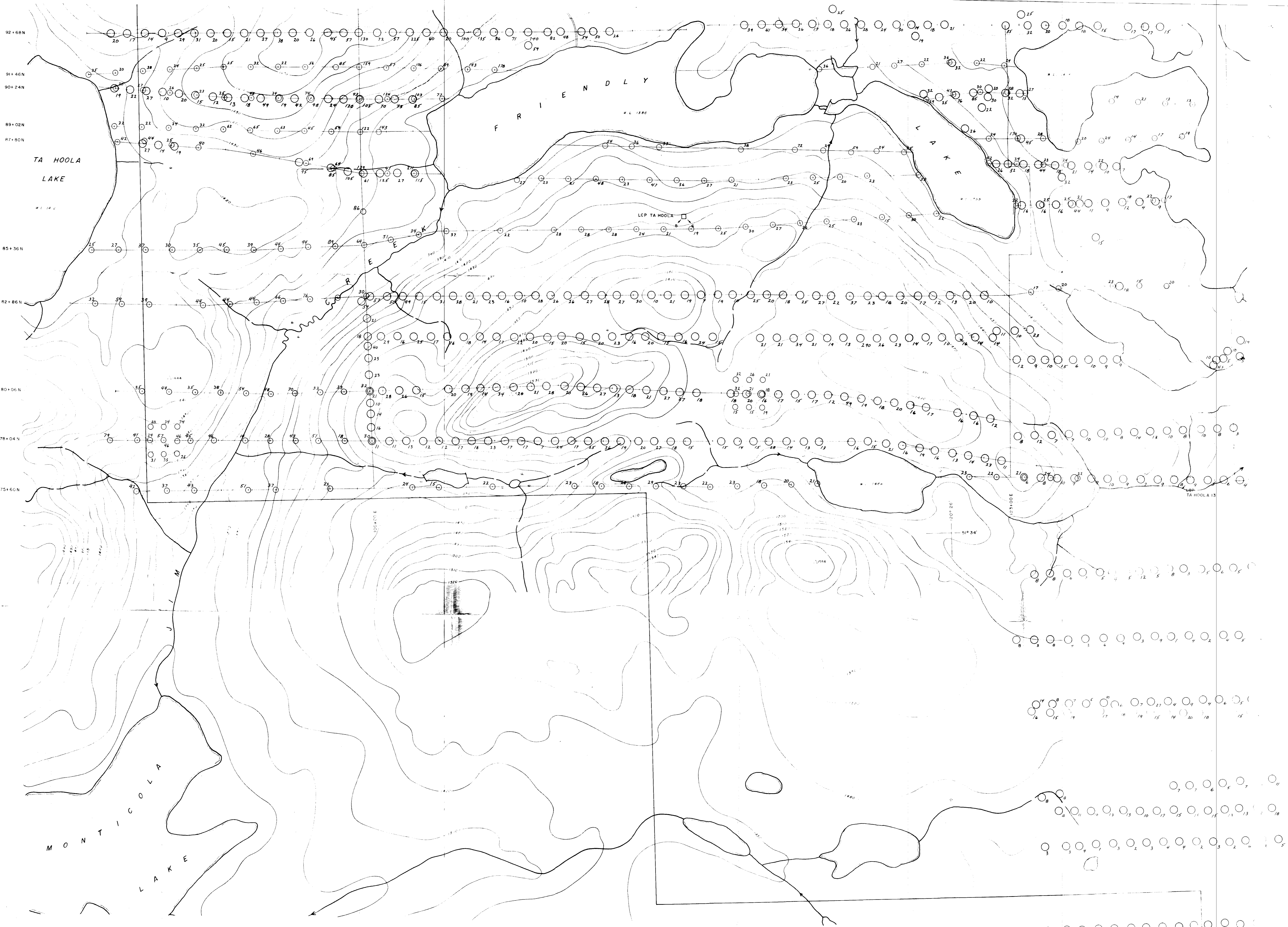


10,287
part 2 of
3

SMD MINING CO. LTD.

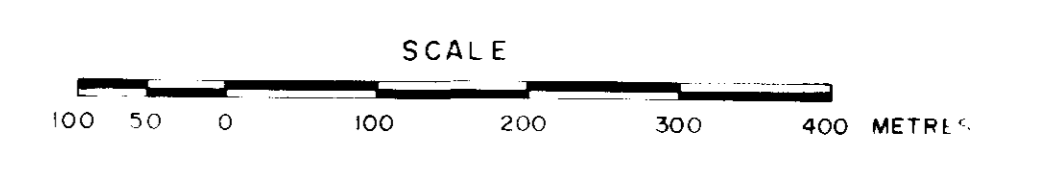
**MOLYBDENUM
SOIL GEOCHEMISTRY**

PROJECT TA HOOLA	DISPOSITION TA HOOLA 1-4
NTS 92 P 9,10	SCALE 1:5000
WORK BY P. RUCK	DATE OCT. 81
DRAWN D. CARR	TAI-15



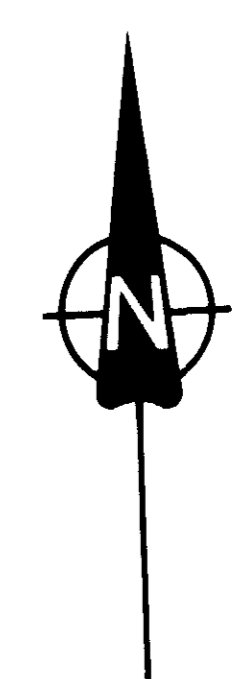
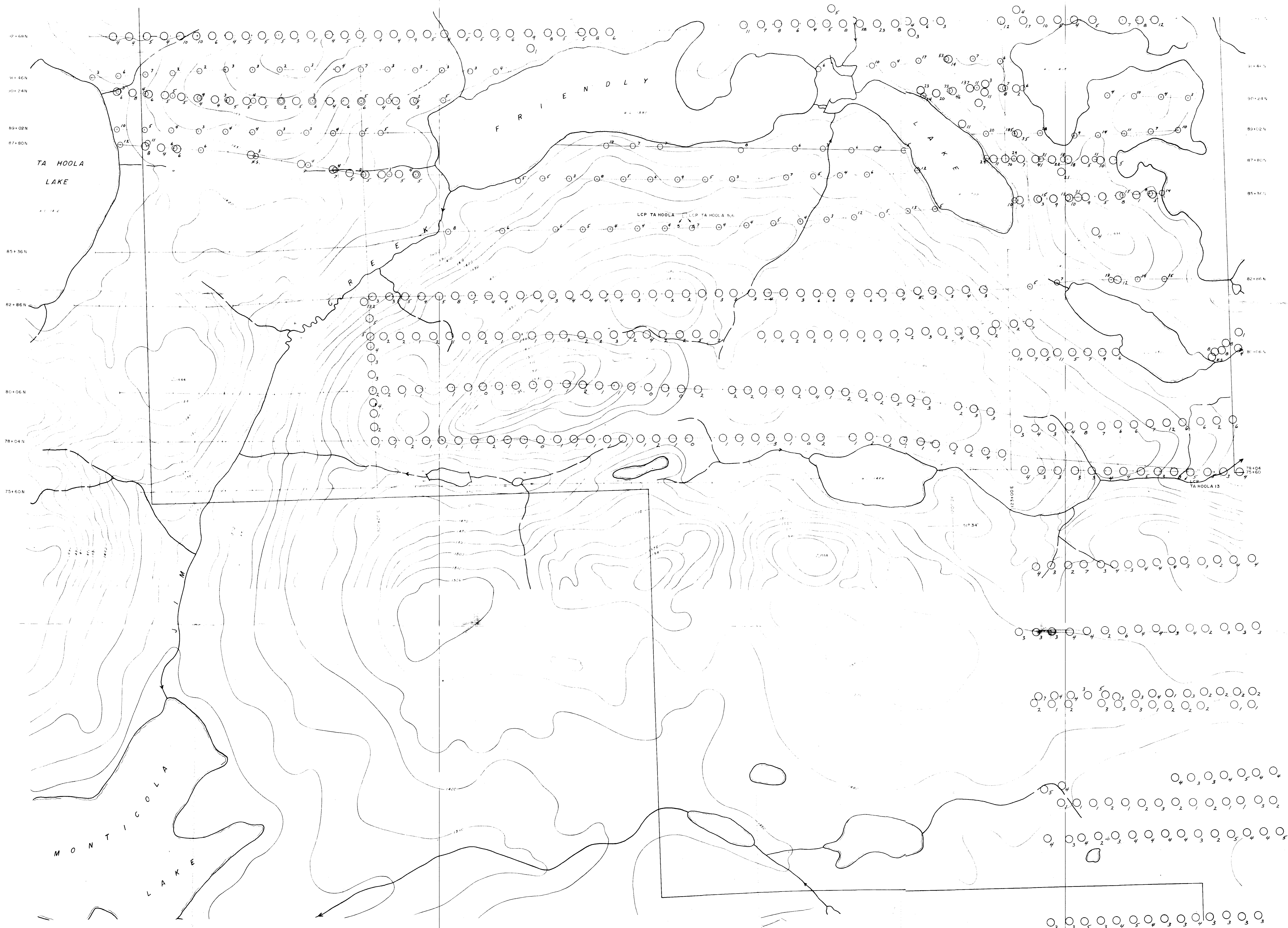
LEGEND

- Soil sample site location - Imperial Oil Ltd 1972
- Soil sample site location - S.M.D. Mining Co. Ltd. 1981
- ≥ 95 ppm Pb
- ≥ 65 ppm Pb
- Threshold
- ≥ 50 ppm Pb

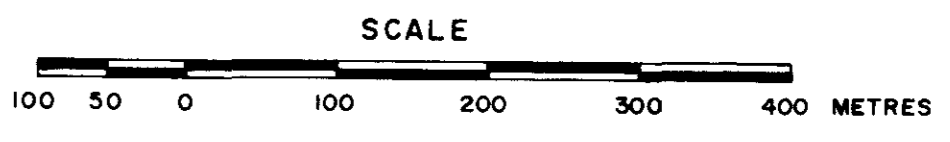


10287
part 2
of 3

SMD MINING CO. LTD.	
LEAD SOIL GEOCHEMISTRY	
PROJECT TA HOOLA	
NTS 92 P 9, 10	DISPOSITION TA HOOLA 3-6, 13
WORK BY P. RUCK	SCALE 1:5000
DRAWN P. CARR	DATE OCT 81 TAI-10

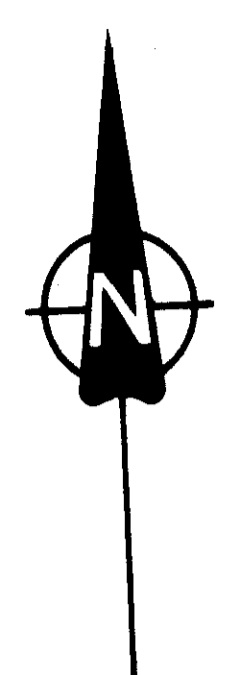
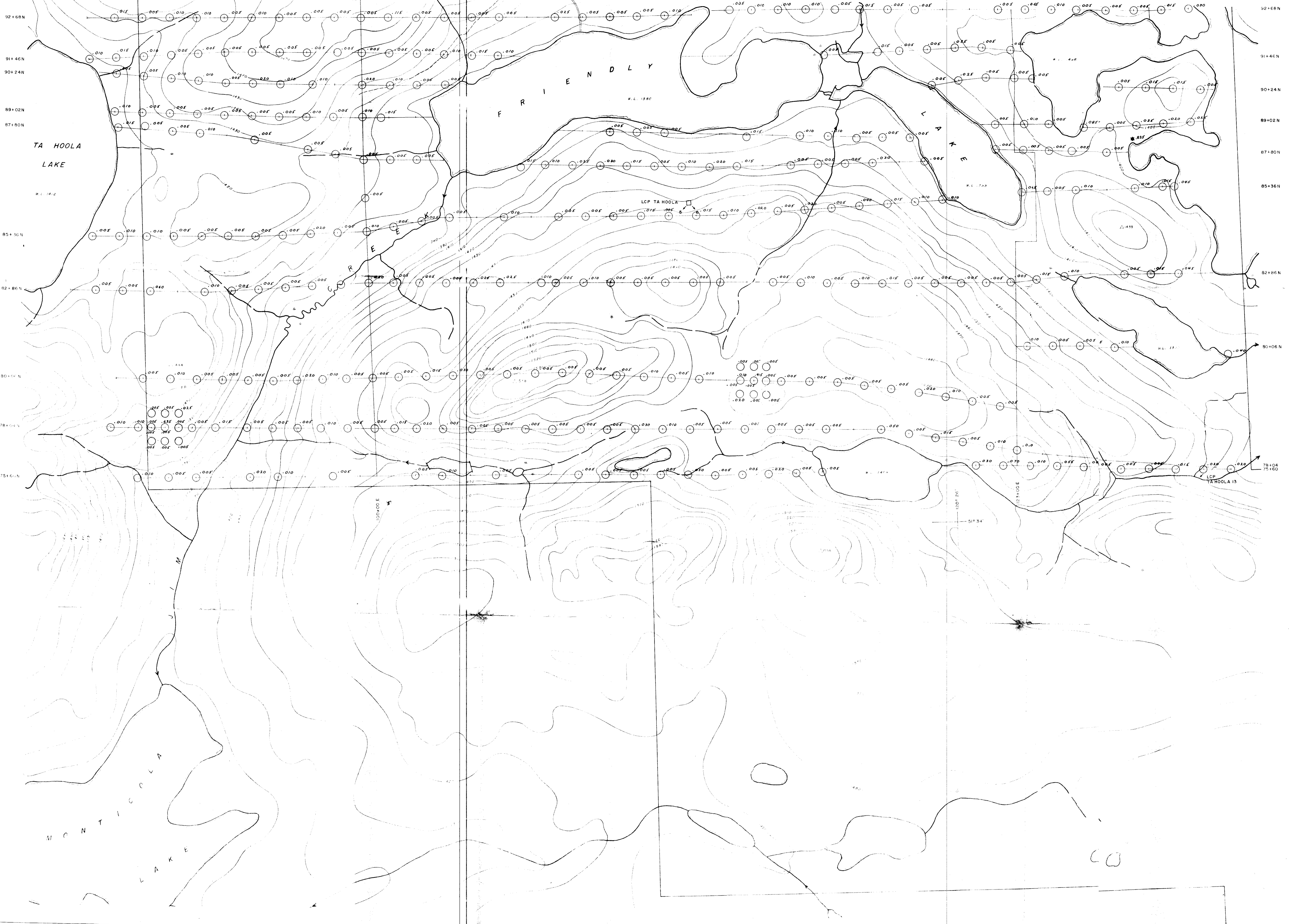


- LEGEND**
- Soil sample site location - Imperial Oil Ltd. 1972
 - Soil sample site location - S.M.D. Mining Co. Ltd. 1981
 - ≥ 40 ppm Mo
 - ≥ 20 ppm Mo

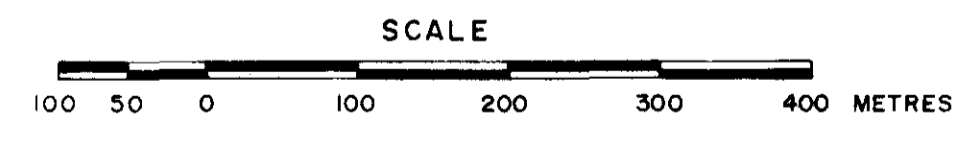


10287
part 2 of 3

SMD MINING CO. LTD.	
MOLYBDENUM SOIL GEOCHEMISTRY	
PROJECT TA HOOLA	DISPOSITION TA HOOLA 3-6,13
NTS 92 P/8,10	SCALE 1:5000
WORK BY P. RUCK	DATE OCT. 81
DRAWN D. CARR	TAI-16

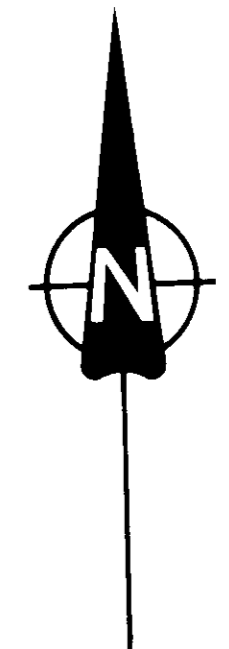
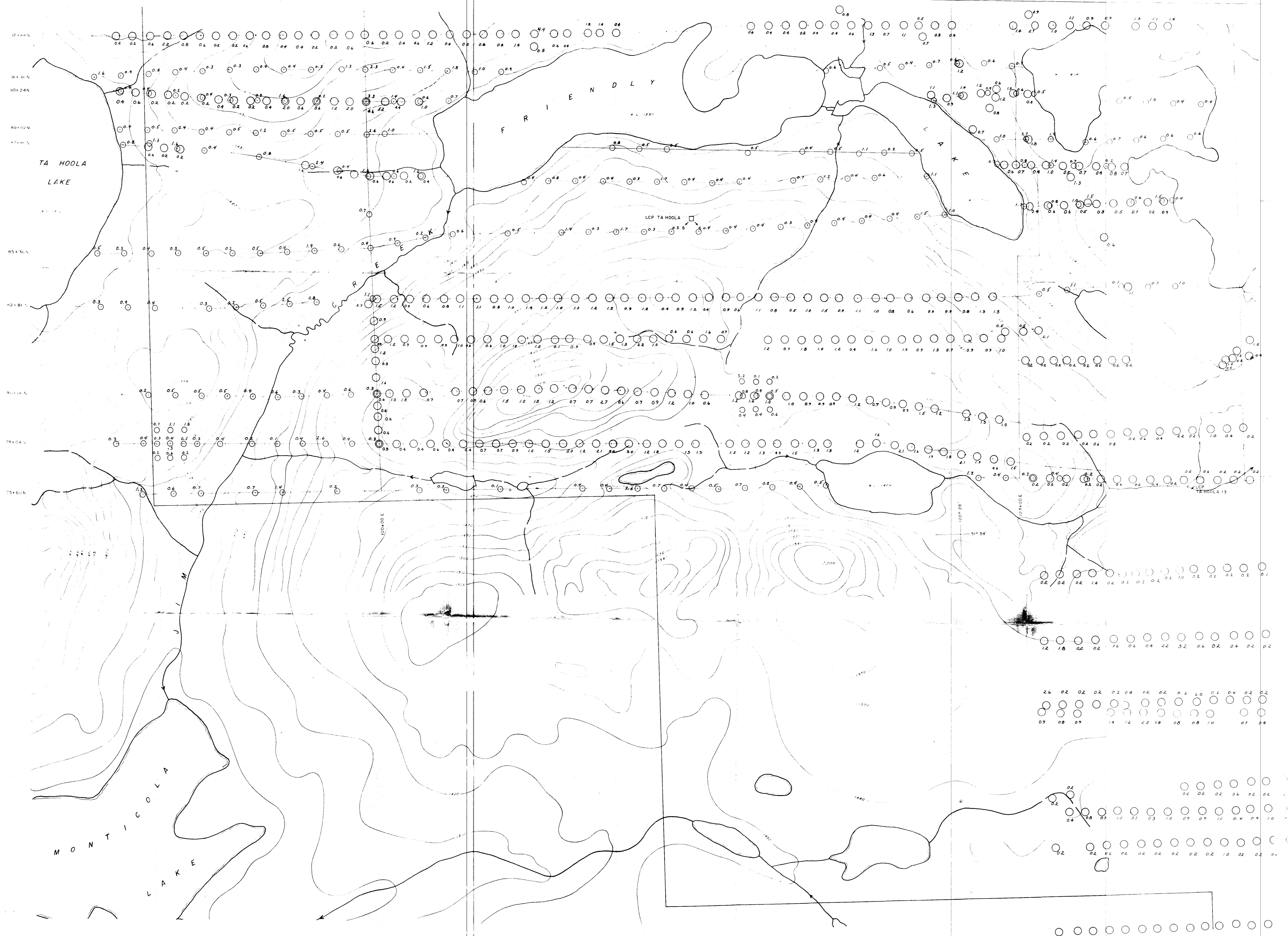


- LEGEND**
- Soil sample site location - S.M.D. Mining Co. Ltd. 1981
 - ≥ 0.100 ppm Au
 - ≥ 0.075 ppm Au
 - Threshold ≥ 0.055 ppm Au
 - ★ Rock sample ≥ 100 ppm Au



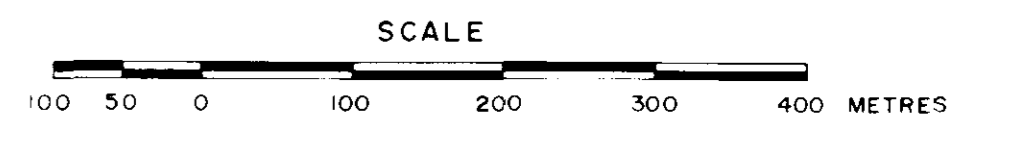
10,287
Part 2
of 3

SMD MINING CO. LTD.	
GOLD SOIL GEOCHEMISTRY	
PROJECT TA HOOLA	DISPOSITION TA HOOLA 3-6,13
NIS 92 P/9,10	SCALE 1:5000
WORK BY P. RUCK	DATE OCT 81
DRAWN D. CARR	TAI-6



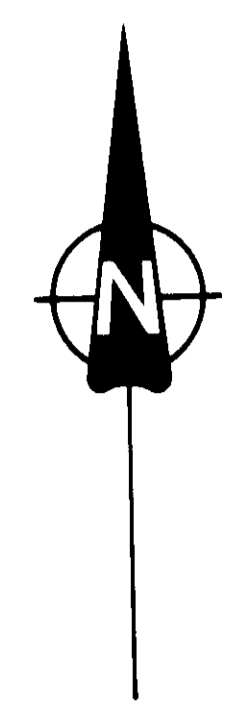
LEGEND

- Soil sample site location - Imperial Oil Ltd 1972
- Soil sample site location - S.M.D. Mining Co. Ltd 1981
- ≥ 2.2 ppm Ag
- ≥ 1.7 ppm Ag Threshold
- ≥ 1.5 ppm Ag

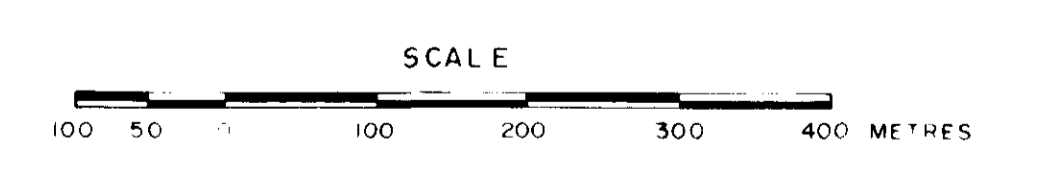


10,287
part 2
of 3

SMD MINING CO. LTD.	
SILVER SOIL GEOCHEMISTRY	
PROJECT TA HOOLA	DISPOSITION TA HOOLA 3-G, 13
NTS 92 P/9, 10	SCALE 1:5000
WORK BY P. RUCK	DATE OCT 81
DRAWN P. CARR	TAI - B

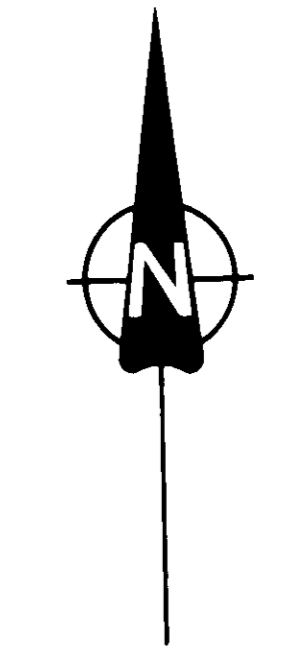
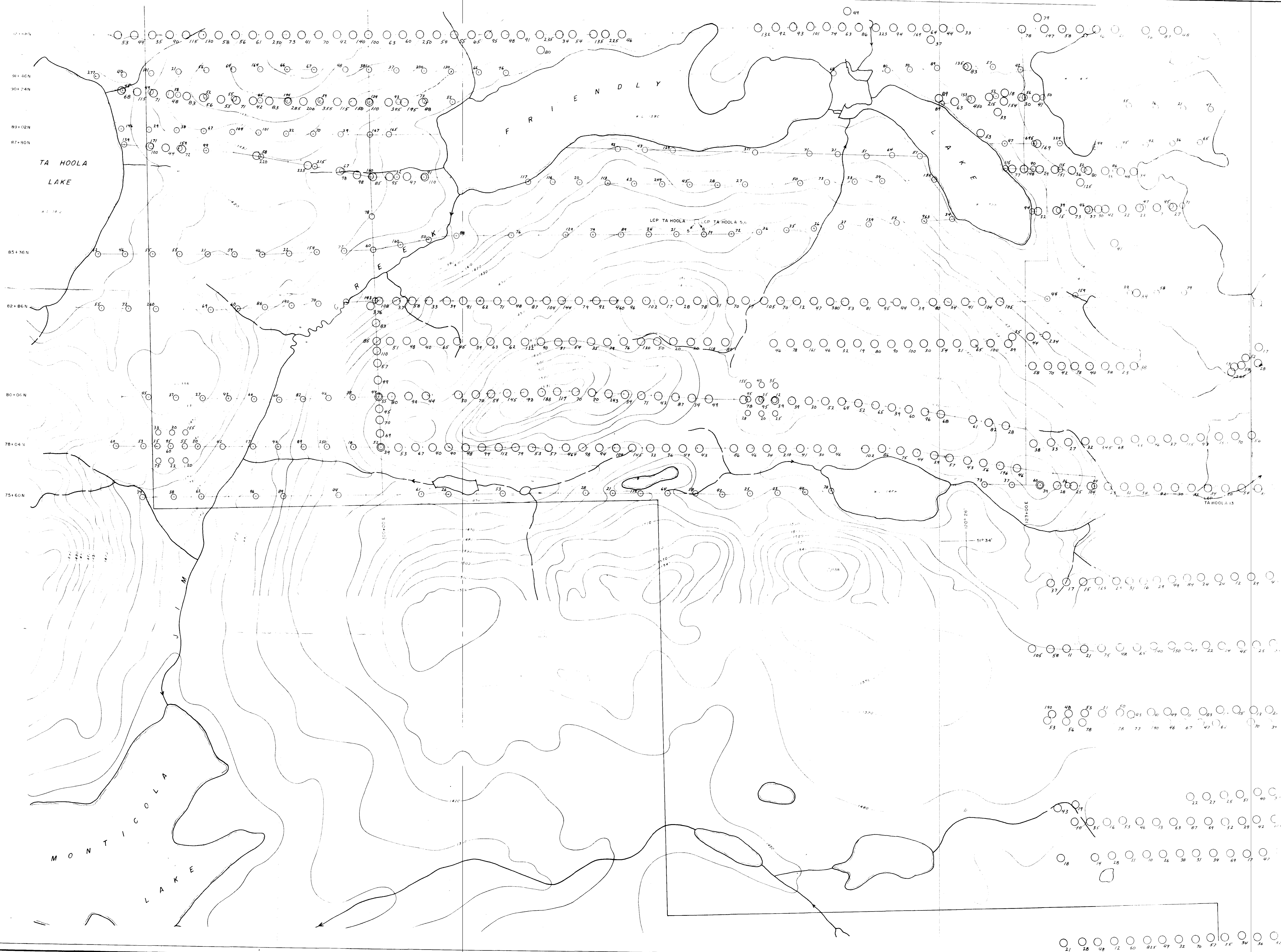


- LEGEND**
- Soil sample site location - S M D Mining Co. Ltd. 1981
 - Soil sample site location - Imperial Oil Ltd. 1972
 - ≥ 300 ppm Zn
 - ≥ 225 ppm Zn
 - Threshold
 - ≥ 175 ppm Zn
 - ◆ Diamond drill hole
 - Percussion drill hole



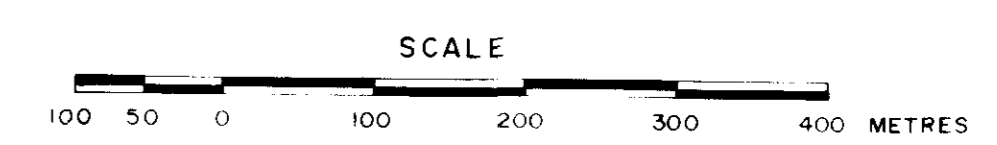
10287
part 2 of 3

SMD MINING CO. LTD.	
ZINC SOIL GEOCHEMISTRY	
PROJECT TA HOOLA	DISPOSITION TA HOOLA 1-4
NTS 92 P. 9,10	SCALE 1:5000
WORK BY P. RUCK	DATE OCT 81
DRAWN D. CARR	TA-11



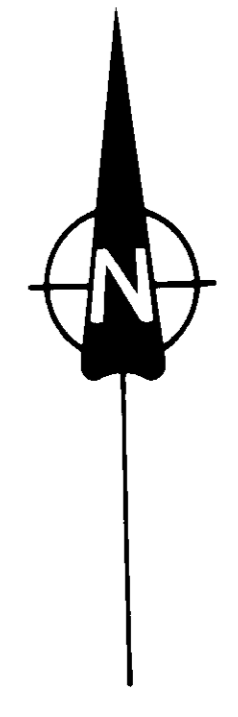
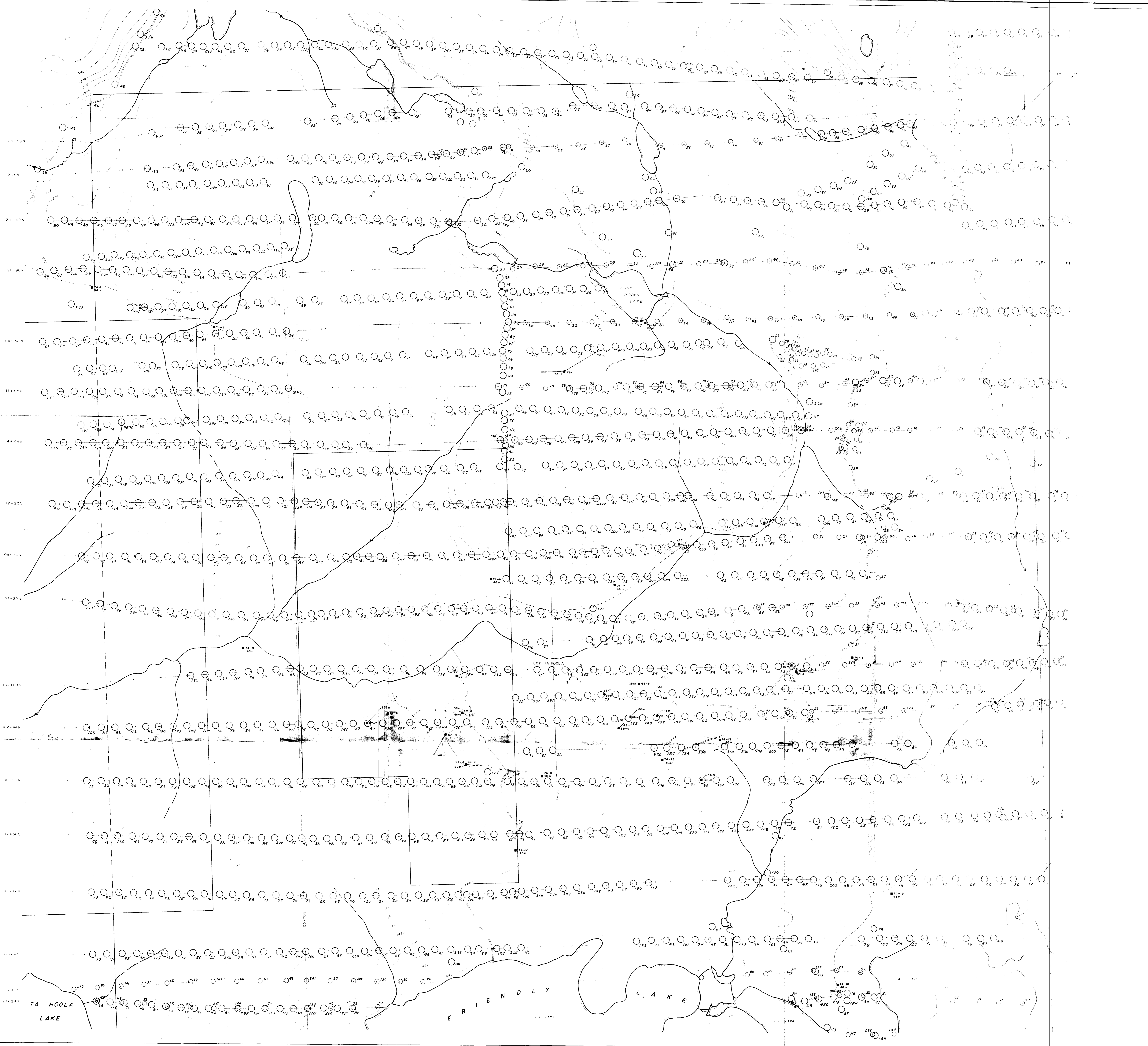
LEGEND

- Soil sample site location - Imperial Oil Ltd 1972
- Soil sample site location - S.M.D. Mining Co. Ltd 1981
- ≥ 300ppm Cu
- ≥ 200ppm Cu
- Threshold
- ≥ 150ppm Cu



10287
part 2 of 3

SMD MINING CO. LTD.	
COPPER SOIL GEOCHEMISTRY	
PROJECT TA HOOLA	DISPOSITION TA HOOLA 3-6, 13
NIS 92 P/B/C	SCALE 1:5000
WORK BY P. RUCK	DATE OCT 81
DRAWN D. CARR	T.A. 14



LEGEND

- Soil sample site location - SMD Mining Co. Ltd. 1981
- Soil sample site location - Imperial Oil Ltd. 1972
- ≥ 300 ppm Cu
- ≥ 200 ppm Cu
- ≥ 150 ppm Cu
- ◆ Diamond drill hole
- Percussion drill hole

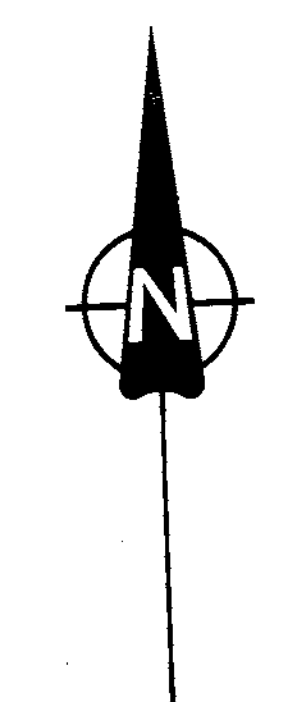
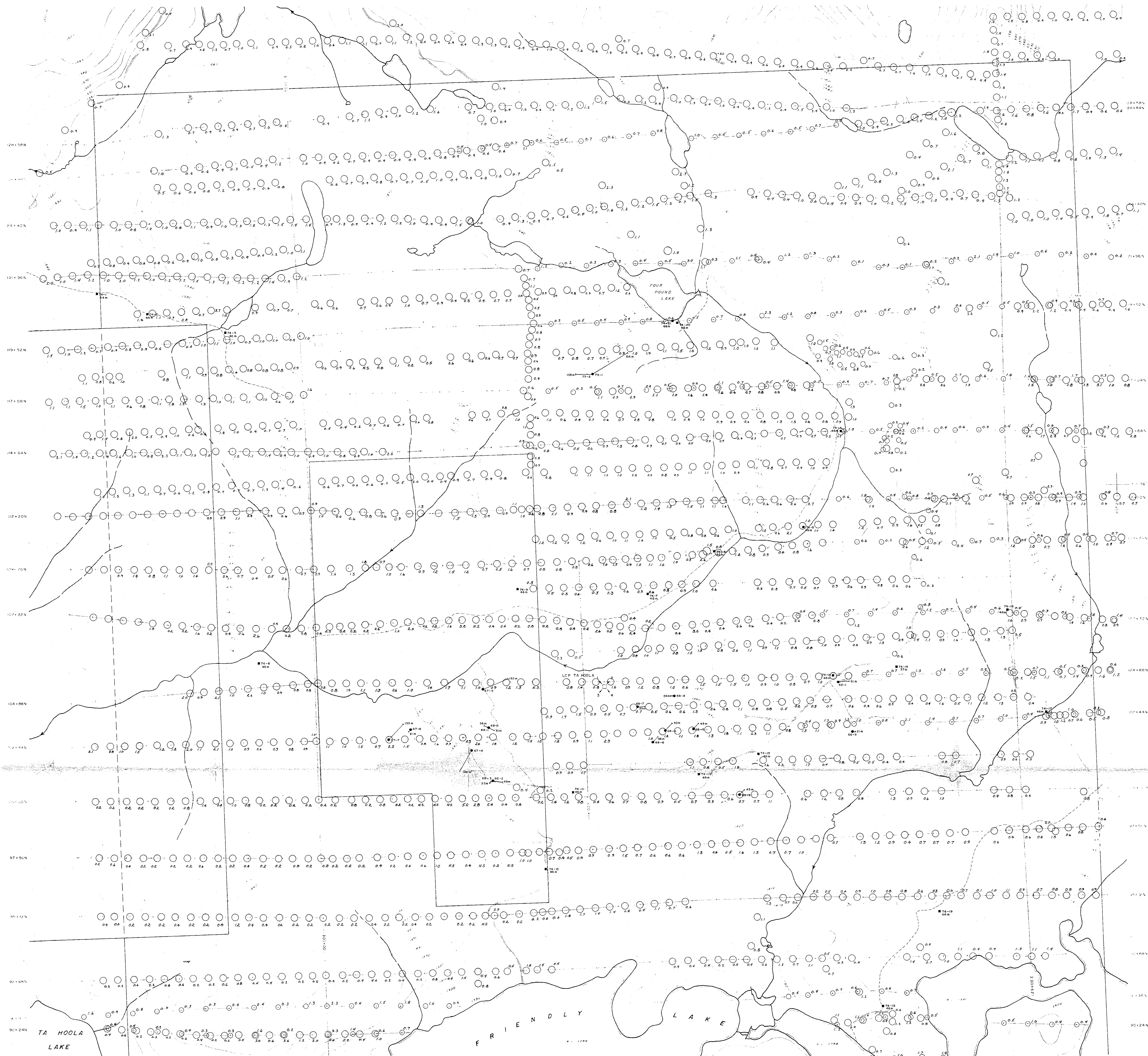
SCALE
0 100 200 300 400 METRES

19287
part 2 of 3

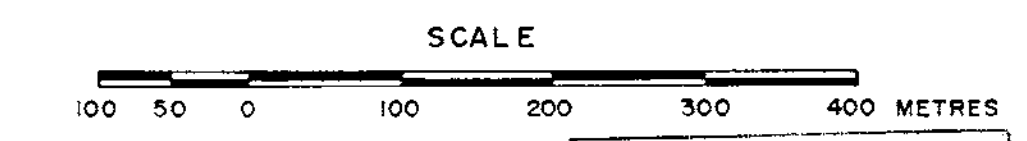
SMD MINING CO. LTD.

**COPPER
SOIL GEOCHEMISTRY**

PROJECT TA HOOLA	DEPOSITION TA HOOLA 1-4
NTS 92 P. 9, 10	SCALE 1:5000
WORK BY P. RUCK	DATE OCT 81
DRAWN D. CARR	TAI-15

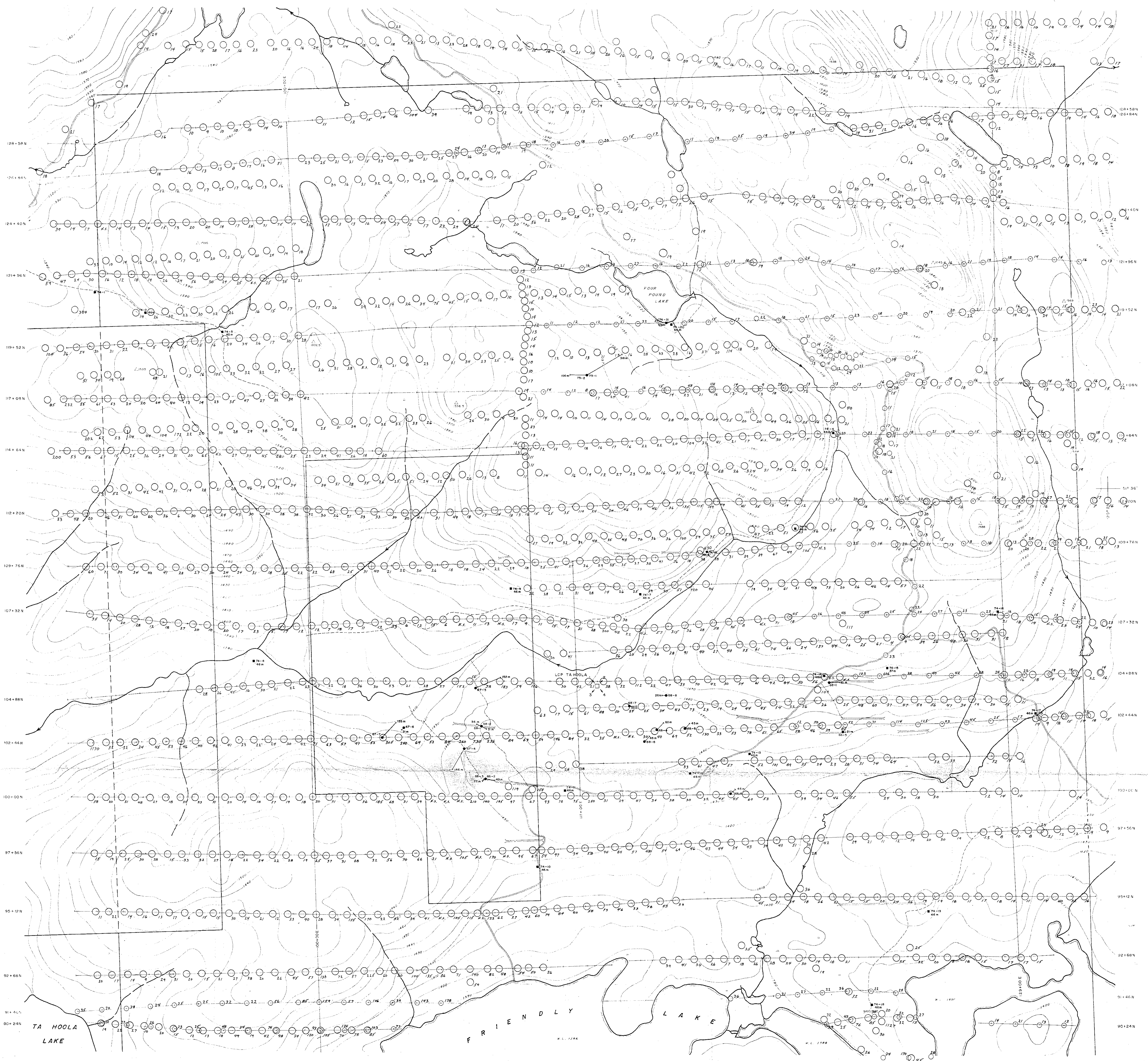


- LEGEND**
- Soil sample site location - S.M.D. Mining Co. Ltd. 1981
 - Soil sample site location - Imperial Oil Ltd. 1972
 - ≥ 2.2 ppm Ag
 - ≥ 1.7 ppm Ag
 - ≥ 1.5 ppm Ag
 - ◆ Diamond drill hole
 - Percussion drill hole

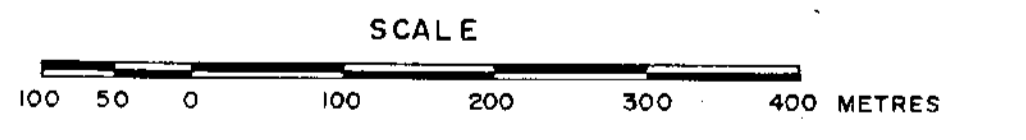


10,287
PART 2
OF 3

SMD MINING CO. LTD.	
SILVER SOIL GEOCHEMISTRY	
PROJECT TA HOOLA	DISPOSITION TA HOOLA 1-4
NTS 92 P. 9,10	SCALE 1:5000
WORK BY P. RUCK	DATE OCT. 81
DRAWN S. CARR	TAL-7

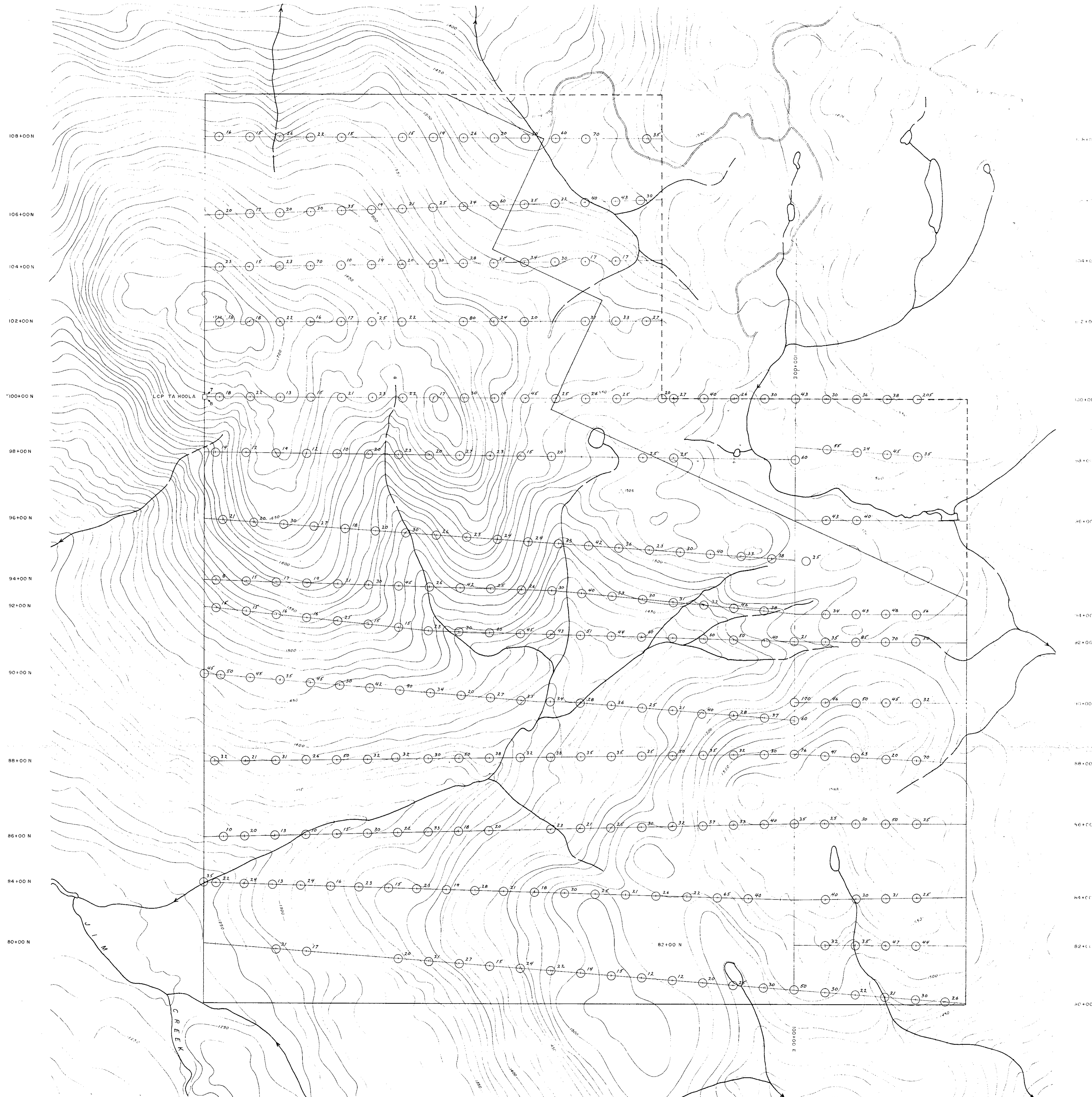


- LEGEND**
- Soil sample site location - S.M.D. Mining Co. Ltd. 1981
 - Soil sample site location - Imperial Oil Ltd. 1972
 - ≥ 95 ppm Pb
 - ≥ 65 ppm Pb
 - ≥ 50 ppm Pb
 - Threshold
 - ◆ Diamond drill hole
 - Percussion drill hole



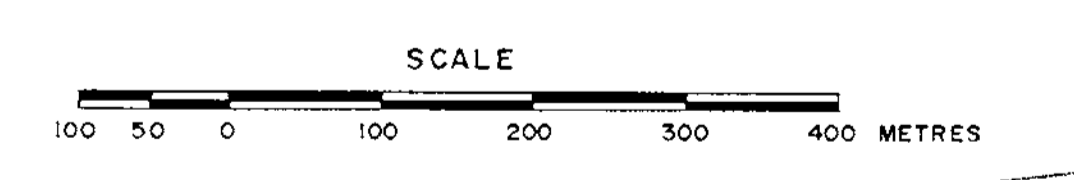
MINERAL RESOURCES BRANCH
 10,287
 Part 2
 OF 3

S.M.D. MINING CO. LTD.	
LEAD SOIL GEOCHEMISTRY	
PROJECT TA HOOLA	DISPOSITION TA HOOLA 1-4
NTS 92 P. 9, 10	SCALE 1:5000
WORK BY P. RUCK	DATE OCT 81
DRAWN D. CARR	TAL-9



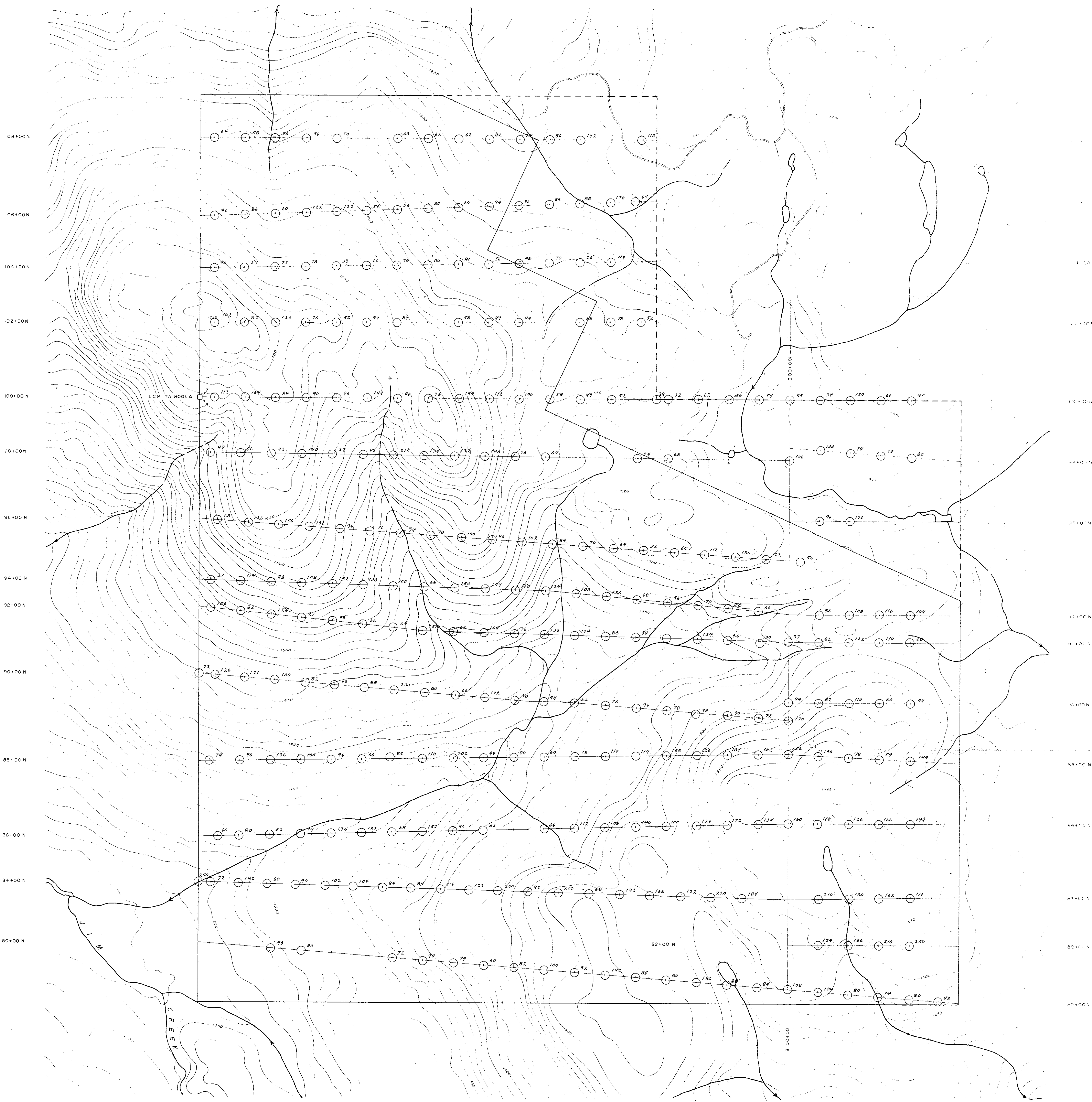
LEGEND

- Soil sample site location - S.M.D. Mining Co. Ltd. 1981
- ≥ 95 ppm Pb
- ≥ 65 ppm Pb
- ≥ 50 ppm Pb Threshold



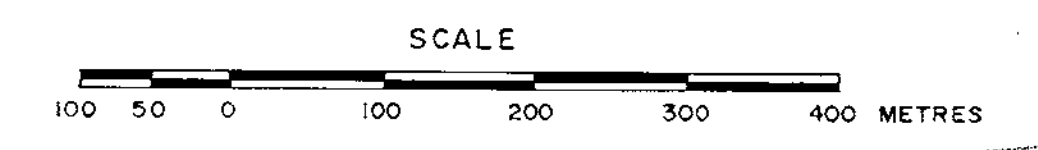
*10/28/81
part 2 of 3*

SMD MINING CO. LTD.	
LEAD SOIL GEOCHEMISTRY	
PROJECT TA HOOLA	DISPOSITION TA HOOLA 7,8
NTS 92 P 10	SCALE 1:5000
WORK BY P. RUCK	DATE OCT. 81
DRAWN D. CARR	T A I - 19



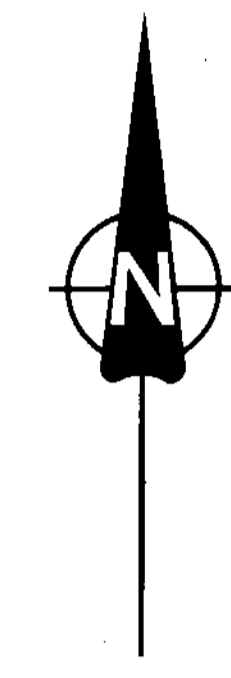
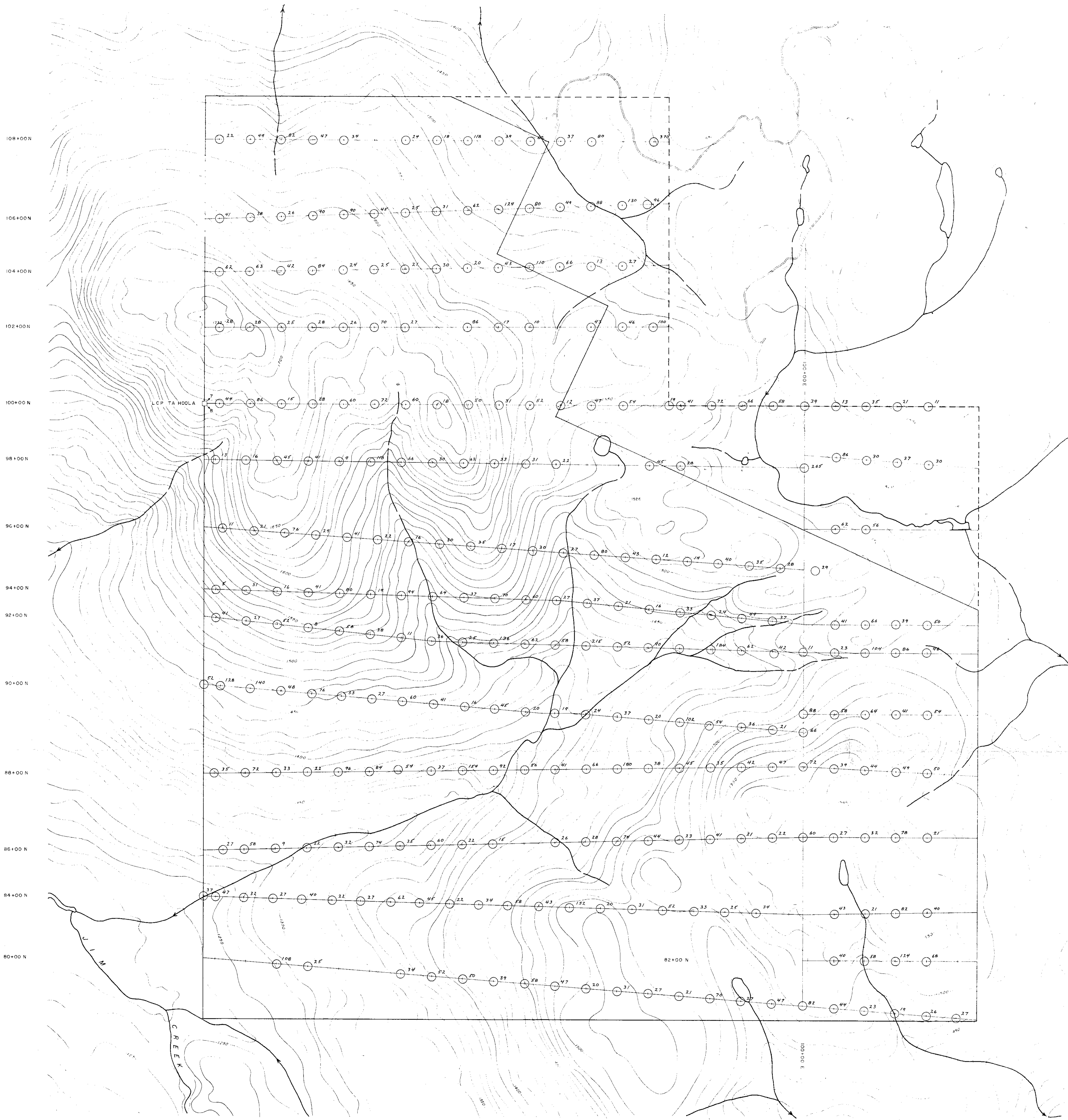
LEGEND

- Soil sample site location - S.M.D. Mining Co. Ltd. 1981
 - ≥ 300 ppm Zn
 - ≥ 225 ppm Zn
 - ≥ 175 ppm Zn
- Threshold



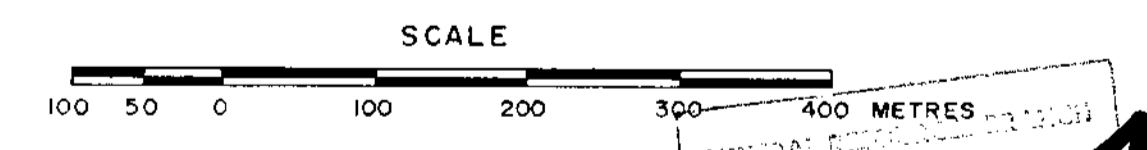
10287
part 2 of 3

SMD MINING CO. LTD.	
ZINC SOIL GEOCHEMISTRY	
PROJECT TA HOOLA	
NTS 92 P 10	DISPOSITION TA HOOLA 7,8
WORK BY P. RUCK	SCALE 1:5000
DRAWN D. CARR	DATE OCT. 81
	TA1-20



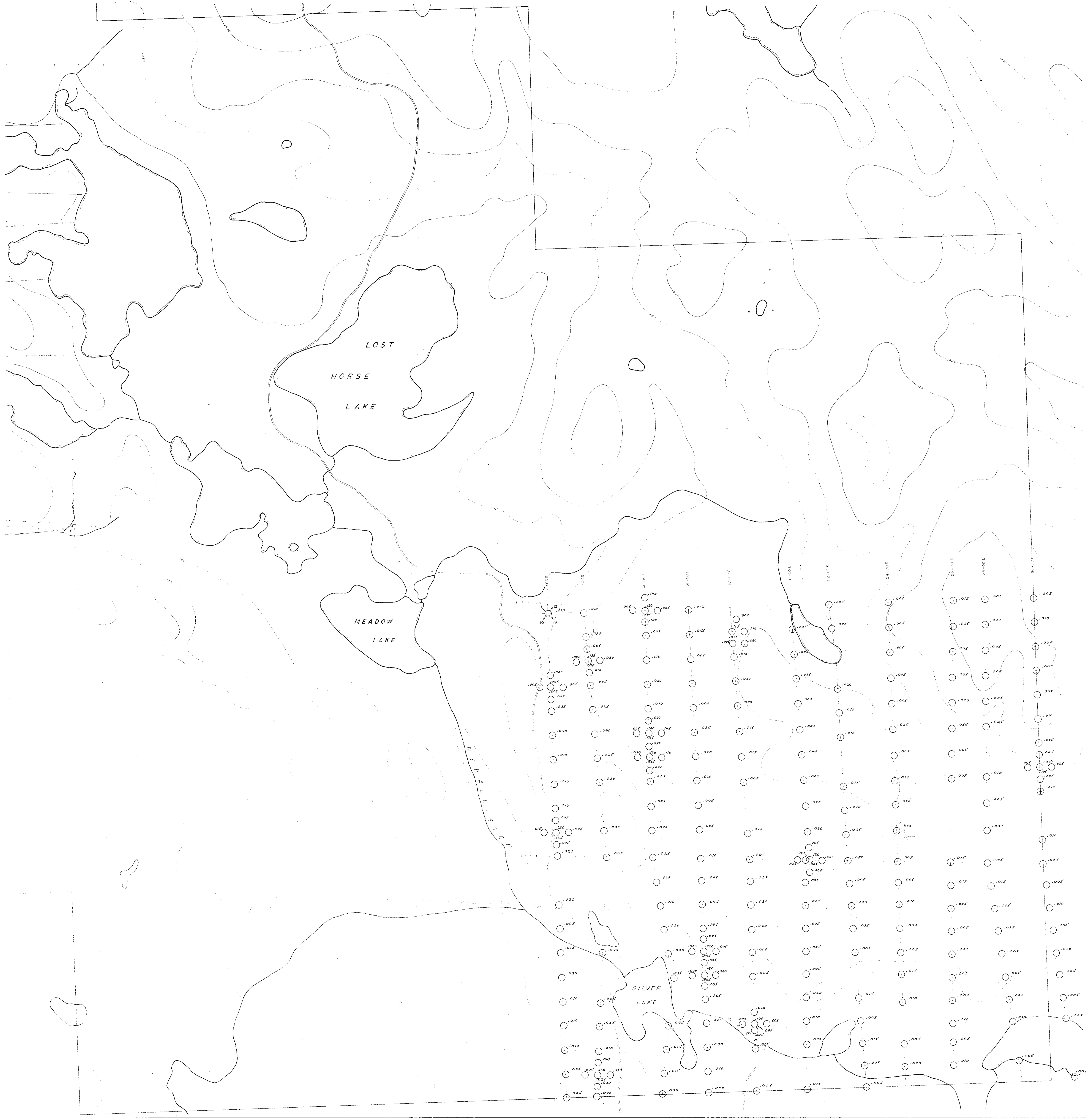
LEGEND

- Soil sample site location - S.M.D. Mining Co. Ltd. 1981
- ≥ 300 ppm Cu
- ≥ 200 ppm Cu
- ≥ 150 ppm Cu Threshold



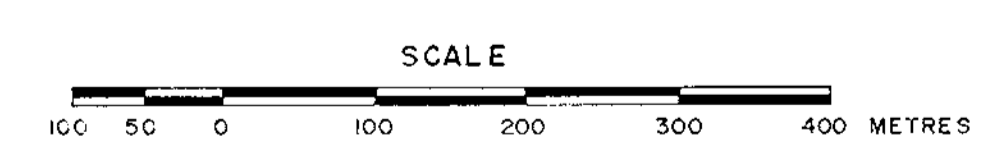
*10,287
part 2 of 3*

SMD MINING CO. LTD.	
COPPER SOIL GEOCHEMISTRY	
PROJECT TA HOOLA	
NTS 02 P 10	DISPOSITION TA HOOLA 7,8
WORK BY P. RUCK	SCALE 1:5000
DRAWN D. CARR	DATE OCT. 81
	TA1 - 21



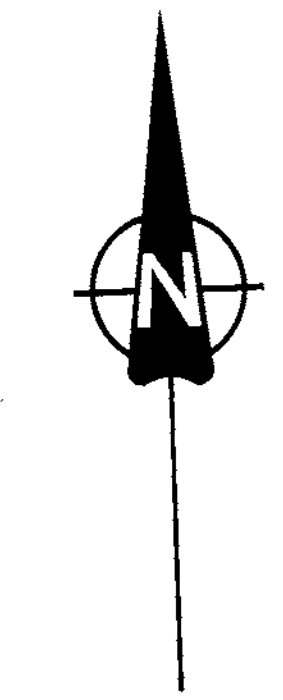
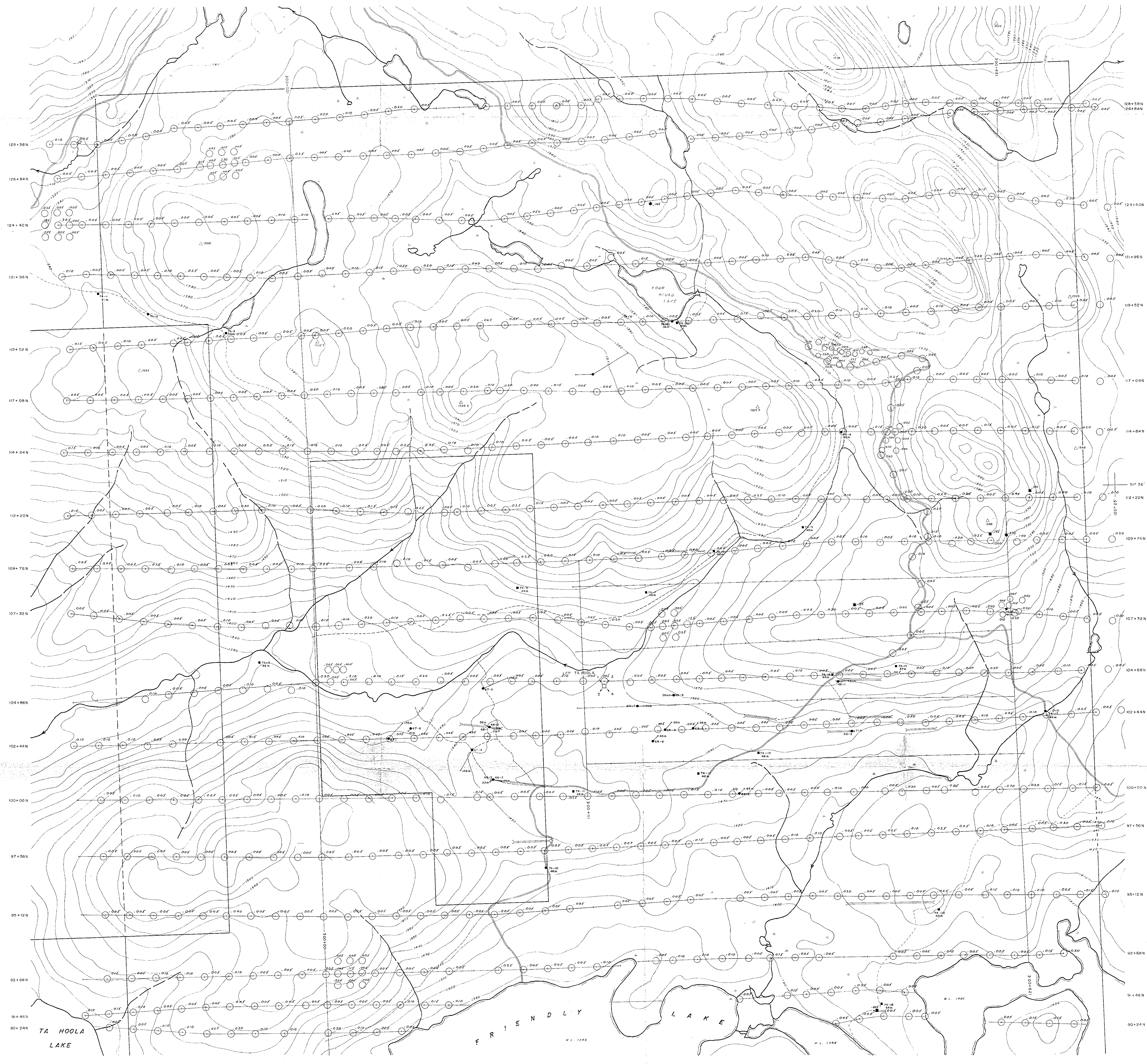
LEGEND

- Soil sample site location - S.M.D. Mining Co. Ltd. 1981
- ≥ 0.100 ppm Au
- ≥ 0.075 ppm Au
- Threshold
- ≥ 0.055 ppm Au

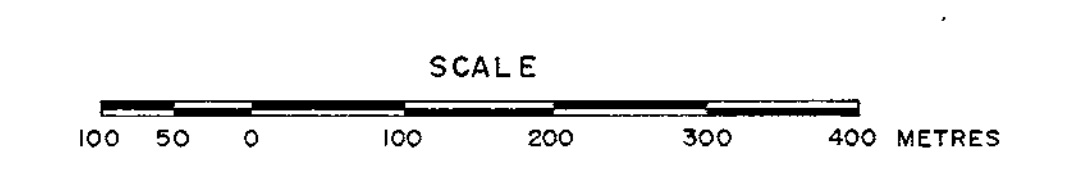


10,287
part 2 of 3

PROJECT TA HOOLA	
NTS 32 P / 9	DISPOSITION TA HOOLA 9/10/11/12
WORK BY P. RUCK	SCALE 1:5000
DRAWN D. CARR	DATE NOV 81
	TAI-23



- LEGEND**
- Soil sample site location - S.M.D. Mining Co. Ltd. 1981
 - ≥ 0.100 ppm Au
 - ≥ 0.075 ppm Au
 - Threshold
 - ≥ 0.055 ppm Au
 - ≥ 0.025 ppm Au
 - Diamond drill hole
 - Percussion drill hole
 - ★ Rock sample ≥ 100 ppm Au

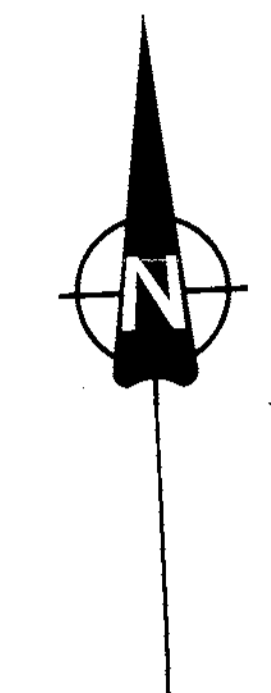
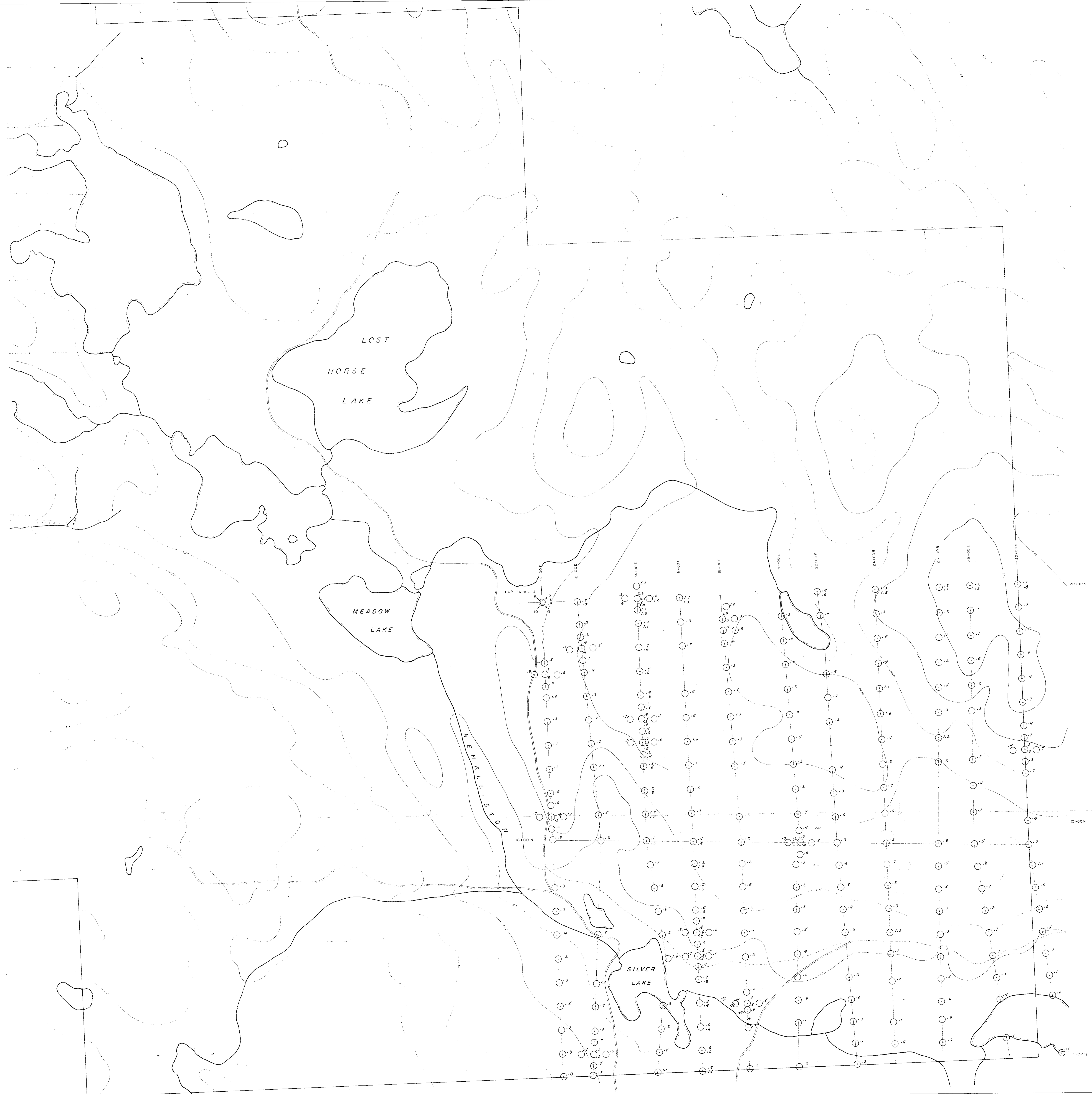


10,287
 Part 2
 of 3

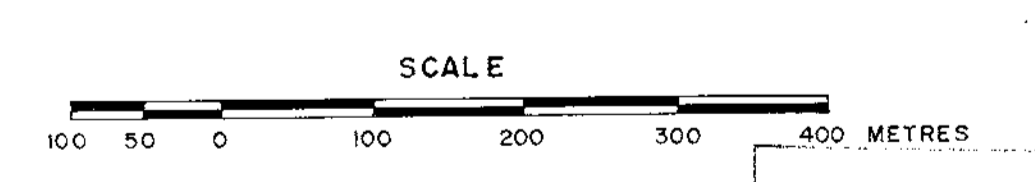
SMD MINING CO. LTD.

GOLD SOIL GEOCHEMISTRY

PROJECT TA HOOLA	DISPOSITION TA HOOLA 1-4
NTS 92 P. 9,10	SCALE 1:5000
WORK BY P. EUCK	DATE OCT. 81
DRAWN D. CARR	TAI-5

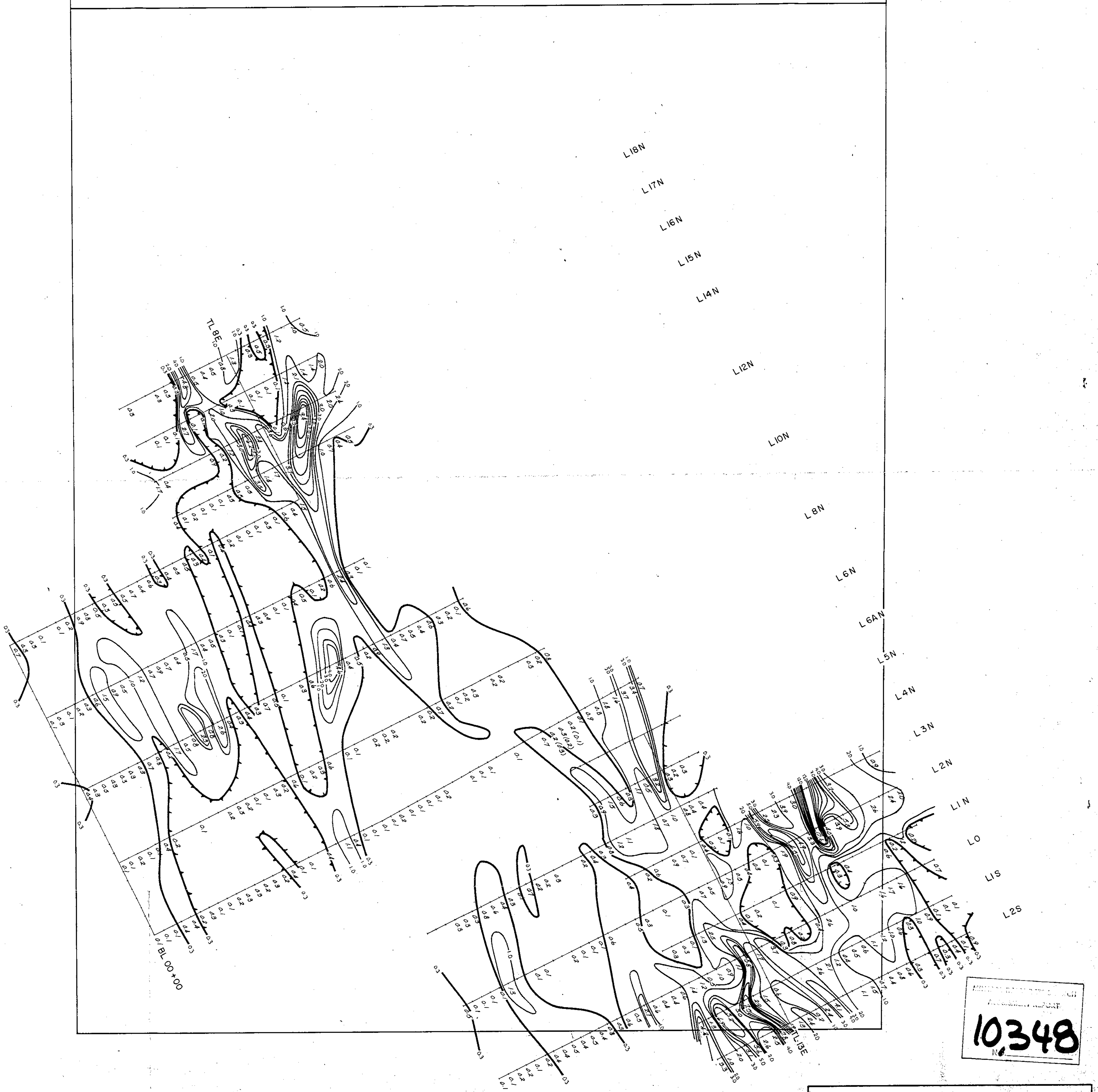
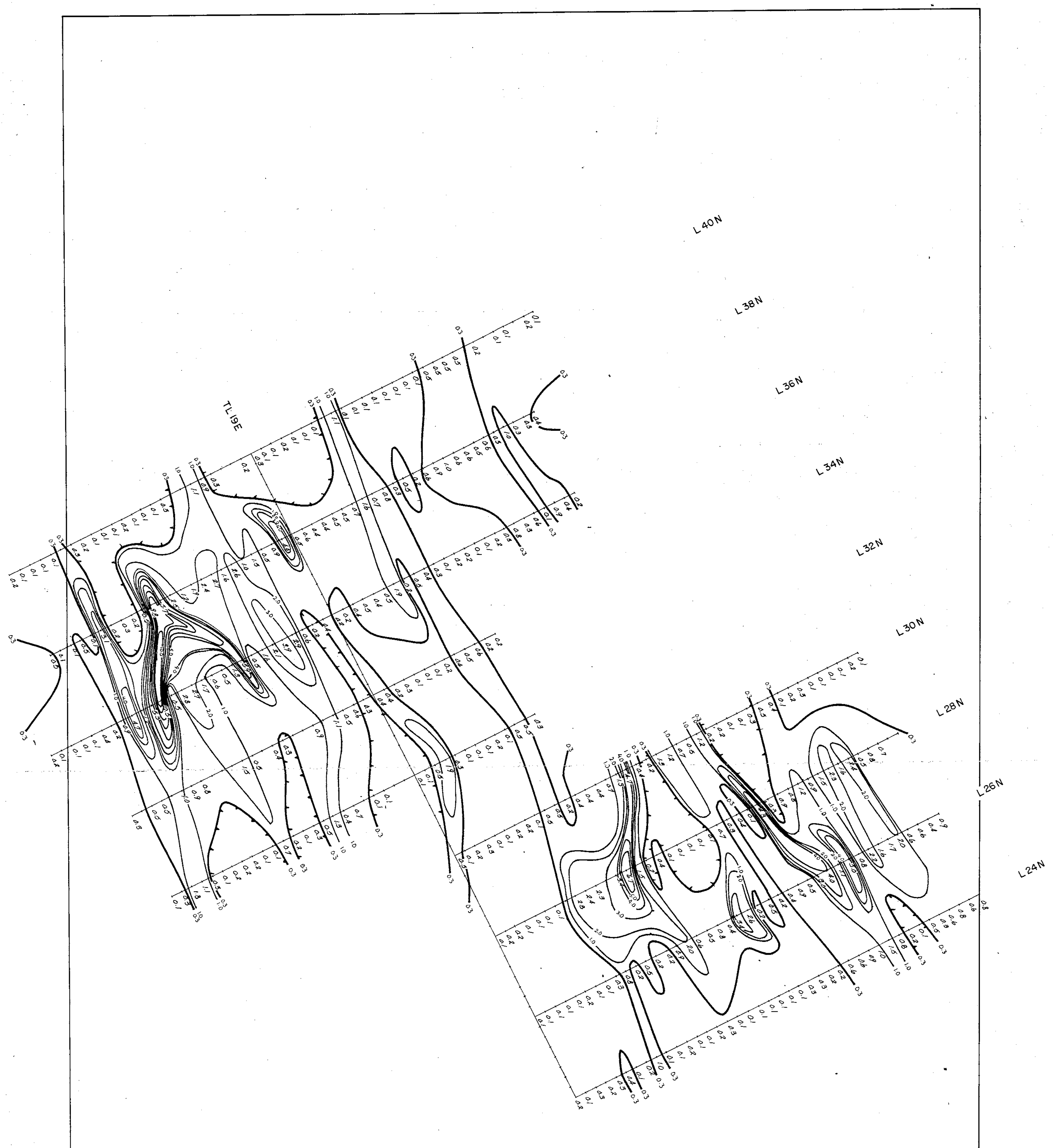
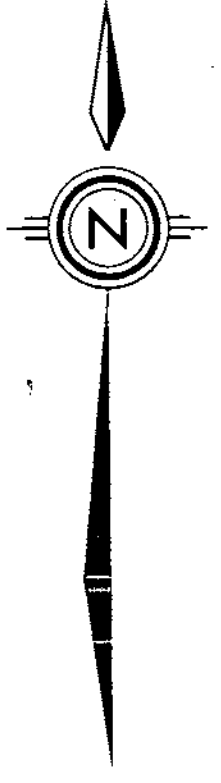


- LEGEND**
- Soil sample site location - S.M.D. Mining Co. Ltd. 1981
 - ◐ ≥ 2.2 ppm Ag
 - ◑ ≥ 1.7 ppm Ag
 - Threshold ≥ 1.5 ppm Ag



10,287
part 2 of
3

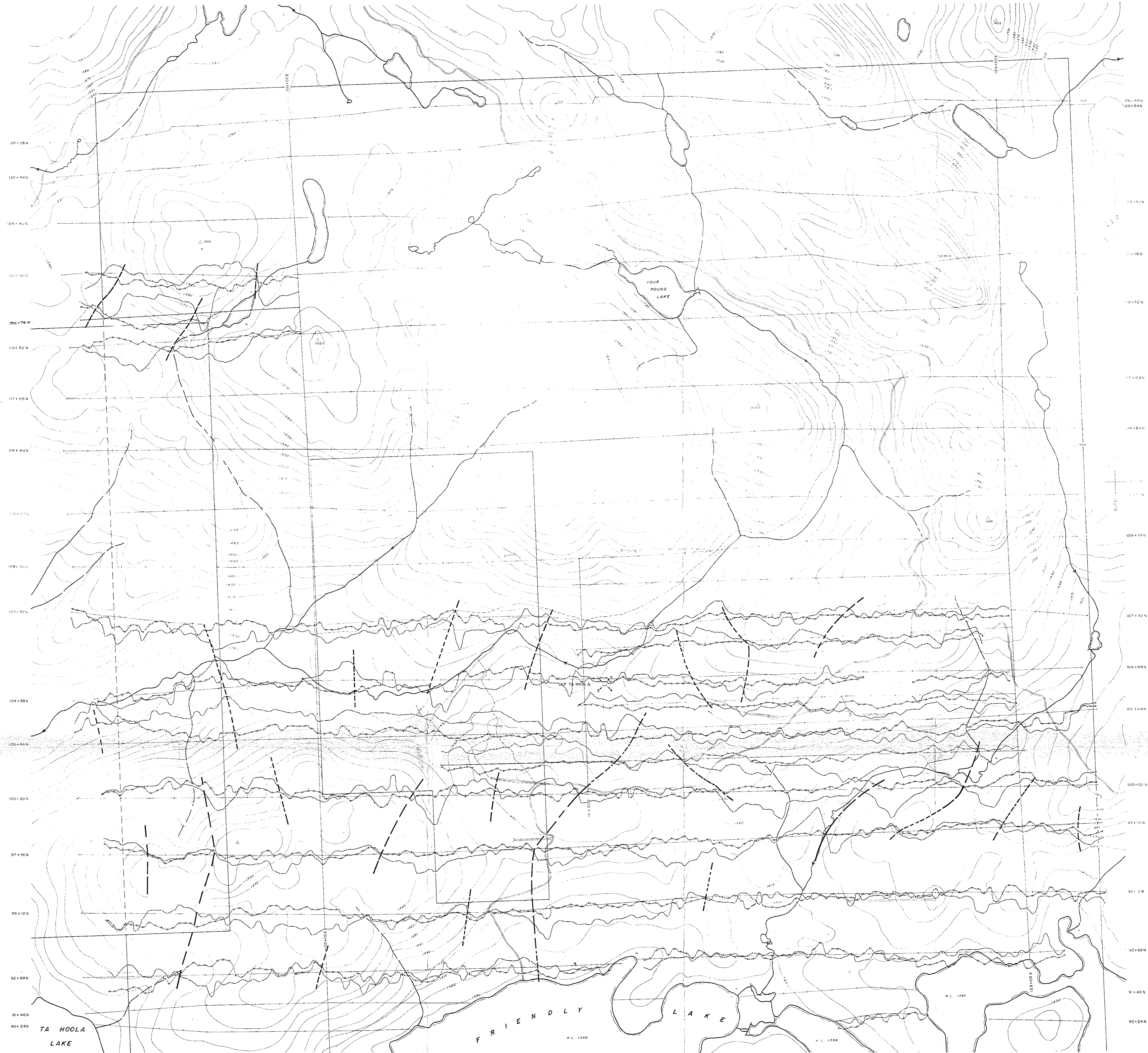
SMD MINING CO. LTD.	
SILVER SOIL GEOCHEMISTRY	
PROJECT TA HOOLA	DISPOSITION TA HOOLA 9/10/12
MTS 32 P/3	SCALE 1:5000
WORK BY P. RECK	DATE NOV 81
DRAWN D. CARR	TAI-24



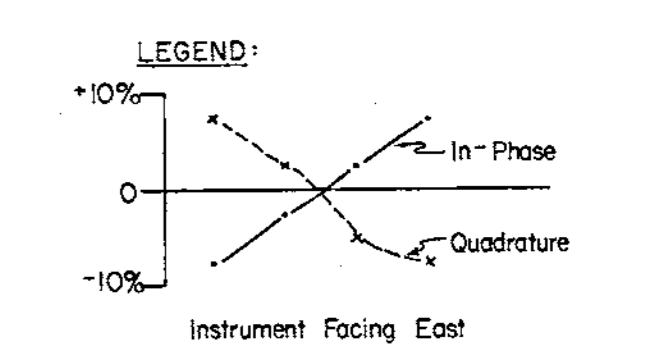
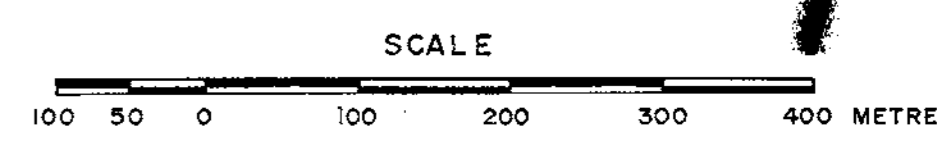
10348

— Background >0.3 ppm.
— Contour Interval 1.0 ppm.

GOLDEN RULE RESOURCES LTD.	
CHAPPELLE PROJECT	
MAP 4 - Ag in Soils	METS CLAIMS
PROJECT GR-BC-7	
SCALE 1:5,000	0 50 100 150 200 250 METERS
TAIGA CONSULTANTS LTD.	



Conductor Axes



10,287
part 3
of 3

SMD MINING CO. LTD.			
VLF RESULTS			
(NAA, 17.8 KHz)			
CUTLER, MAINE			
PROJECT	TA HOOLA	DISPOSITION	TA HOOLA 1-4
NTS	92 P/9,10	SCALE	1:5000
WORK BY	P. RUCK	DATE	OCT. 81
DRAWN	D.M. CARR	TAI	-45