

ASSESSMENT REPORT

DESCRIBING

THE SOIL GEOCHEMISTRY PROGRAMME

on

THE CARTHAGE CLAIM GROUP

NELSON MINING DIVISION, BRITISH COLUMBIA

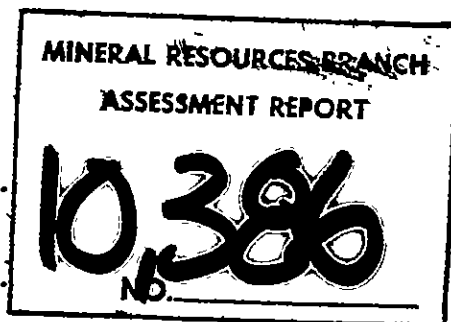
NTS 82F/6E

Latitude 49°20'N; Longitude 117°10'W

For

OWNER: NITHEX EXPLORATION LTD.

OPERATOR: NITHEX EXPLORATION LTD.



BY

Paul W. Richardson, Ph.D., P.Eng.

and

Richard G. Black, B.A.Sc.

Vancouver, B.C.

May 6, 1982



TABLE OF CONTENTS

	<u>PAGE</u>
SUMMARY	1
INTRODUCTION	1
LOCATION AND ACCESS	2
CLAIMS	2
HISTORY OF THE CARTHAGE GROUP	4
GEOLOGY OF THE CARTHAGE GROUP	4
EXPLORATION APPROACH	6
CONCLUSIONS	9
STATEMENT OF COSTS	10
REFERENCES	11
STATEMENTS OF AUTHORS' QUALIFICATIONS	12-13

APPENDICES

APPENDIX I	-	GEOCHEMICAL ANALYSIS CERTIFICATES
APPENDIX II	-	GEOCHEMICAL ANALYSIS METHODS

TABLE OF FIGURES

		<u>Following Page</u>
Figure 1	LOCATION MAP (1:2,400,000)	2
Figure 2	ACCESS MAP (1:50,000)	3
Figure 3	CLAIM MAP (1:50,000)	3
Figure 4	GEOCHEMICAL RESULTS FOR COPPER (1:2500)	in pocket
Figure 5	GEOCHEMICAL RESULTS FOR LEAD (1:2500)	" "
Figure 6	GEOCHEMICAL RESULTS FOR ZINC (1:2500)	" "
Figure 7	GEOCHEMICAL RESULTS FOR GOLD (1:2500)	" "
Figure 8	GEOCHEMICAL RESULTS FOR SILVER (1:2500)	" "
Figure 9	DETAIL SOIL SAMPLING L2+00S/7+25W (1:500)	" "
Figure 10	DETAIL SOIL SAMPLING L1+00S/5+25W (1:500)	" "

SUMMARY

An exploration programme consisting of cutting and flagging lines and collecting and analysing soil samples was done on the Carthage Claim Group, one of several claim groups purchased in 1980 by Nithex Exploration Ltd. Some anomalous soil areas were found, and detail soil sampling and prospecting was done.

INTRODUCTION

In 1980, Nithex Exploration Ltd. purchased several groups of claims which lie in a north-trending belt just east of Ymir, B.C. The Ymir-Nelson region has been one of the major gold producing areas of the province, and has produced 1,783,000 tons of ore with a content of 529,000 oz. of gold. The area has received little attention in the last 30 years, but, with the recent increase in the price of gold, the area has become of interest again. The Nithex ground was accumulated over the last several years by the vendors, and was purchased by Nithex because it is a reasonably large area of ground with geology favourable for the discovery of gold deposits.

LOCATION AND ACCESS

The Carthage Claim Group is in the Nelson Mining Division at latitude 49°20'N, longitude 117°10'W on NTS sheet 82F/6E (Figure 1). It is on Huckleberry Creek five km NE of Ymir, B.C. (Figure 2). Access to the Property is by a dirt and gravel road which leaves Highway 6 at Ymir. The area is nine km NE of Salmo, 19 km SE of Nelson and 500 km east of Vancouver (Figure 1).

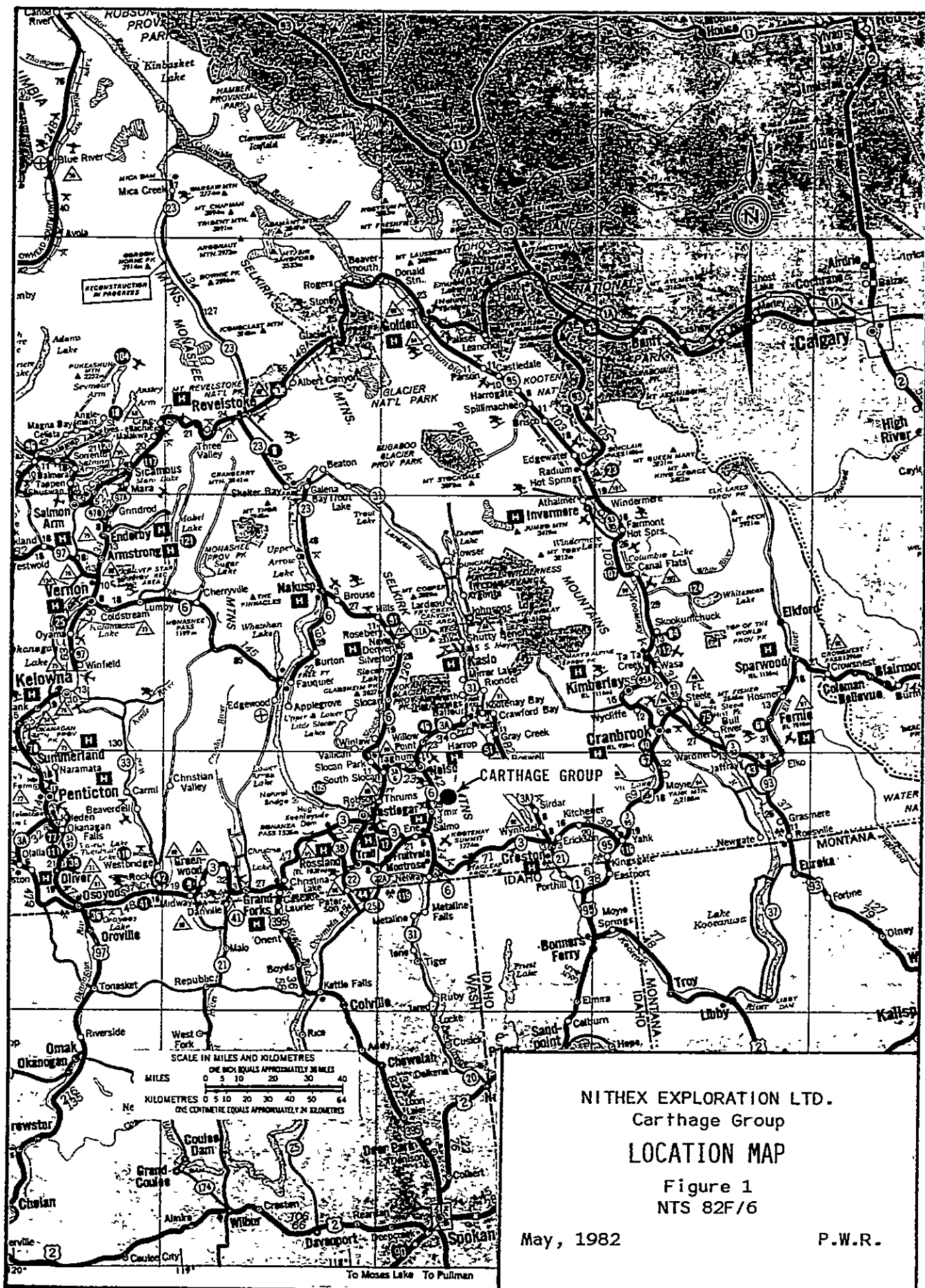
CLAIMS

The Carthage Claim Group is located on Mineral Titles Reference Map M82/F6E. Pertinent claim data are listed in the table below:

CARTHAGE GROUP CLAIMS

<u>Claim</u>	<u>Record No.</u>	<u>No. of Units</u>	<u>Anniversary Date</u>
Carthage	743	1	August 22, 1983
Pat	744	1	August 22, 1983
Beresford	750	1	August 22, 1983
Dufferin	751	1	August 22, 1982
Wild Horse	752	1	August 22, 1983
X-ray	753*	1	August 22, 1983
Ray Fr.	753*	1	August 22, 1983
Joplin	757	1	August 22, 1982
Oronoco	758	1	August 22, 1982
S.J.M.	759	1	August 22, 1982
Ray	765	1	August 22, 1983
Golden Calf	766	1	August 22, 1982
Ramsey	767*	1	August 22, 1982
Maude Fr.	767*	1	August 22, 1982

*Adjoining reverted Crown Grants which do not collectively exceed 61.78 acres are combined to form one recorded claim.



NITEX EXPLORATION LTD.
 Carthage Group
LOCATION MAP

Figure 1
 NTS 82F/6

May, 1982

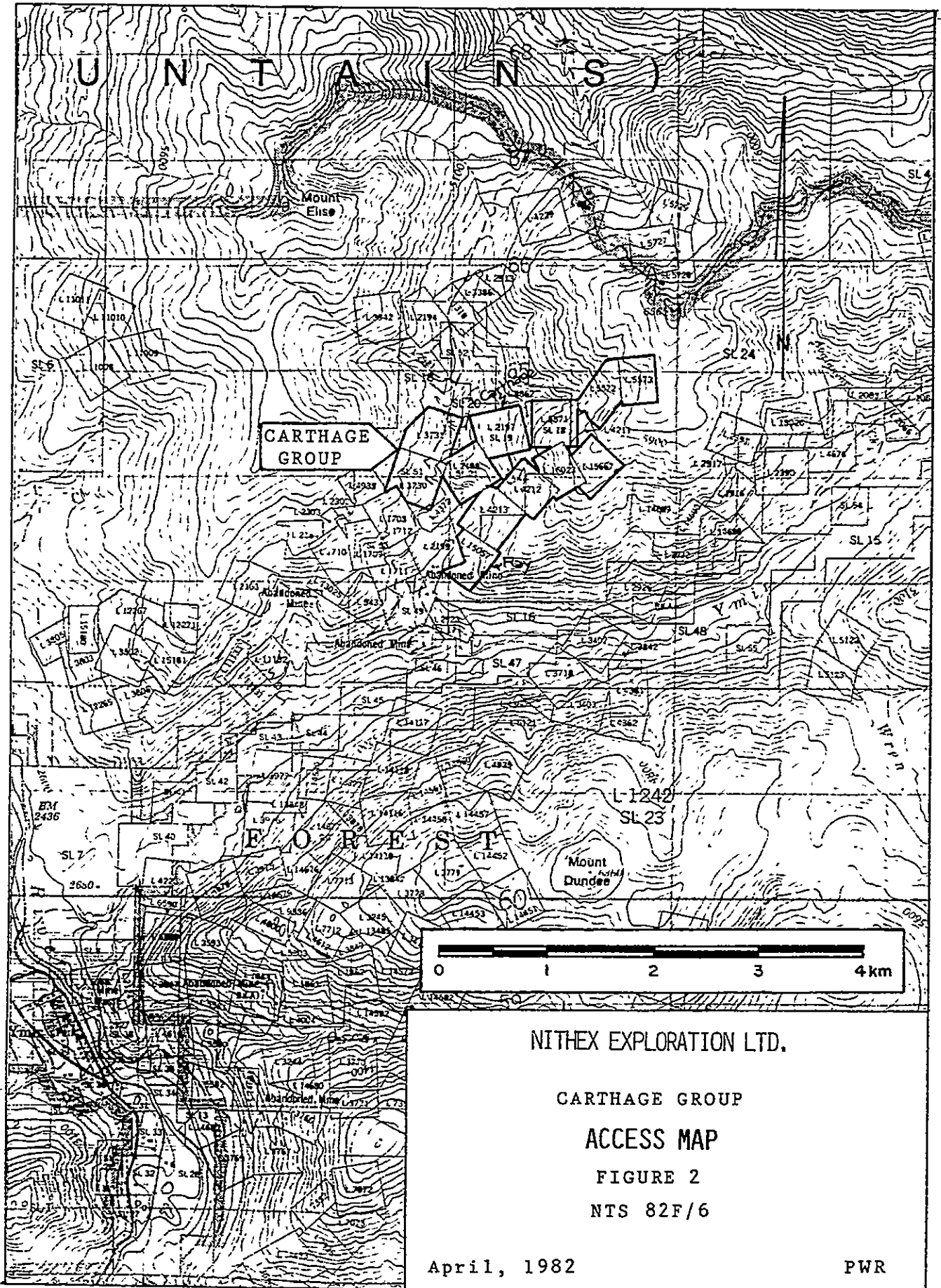
P.W.R.

Listed below are other claims which, up to April 9, 1982, had not been part of the Carthage Group but now are:

<u>Claim</u>	<u>Record No.</u>	<u>No. of Units</u>	<u>Anniversary Date</u> **
Huck	2206	9	April 13, 1982
Elise	971	1	March 29, 1983
Lytton	972	1	March 29, 1983
Salmon Star	981	1	March 29, 1982
Ema	976	1	March 29, 1983
Dot	1048	20	May 18, 1982
Jasmine 1	1703	1	June 2, 1983
Jasmine 2	1704	1	June 2, 1983
Jasmine 3	1705	1	June 2, 1983
Jasmine 4	1706	1	June 2, 1983
Jasmine 5	1707	1	June 2, 1983
Jasmine 6	1708	1	June 2, 1983
Jasmine 7	1709	1	June 2, 1983
Jasmine 8	1710	1	June 2, 1983
Jasmine 9	1711	1	June 2, 1983
Jasmine 10	1712	1	June 2, 1983
Jasmine 11	1713	1	June 2, 1983
Gibraltar	742	1	August 22, 1982 ✓

** Anniversary dates listed are the dates prior to filing of this work.

The above information conforms with the records of the Claim Recorder in Nelson. The claims are shown in Figure 3 and are described in Appendix I.



CARTHAGE GROUP

FOREEST

NITEX EXPLORATION LTD.

CARTHAGE GROUP

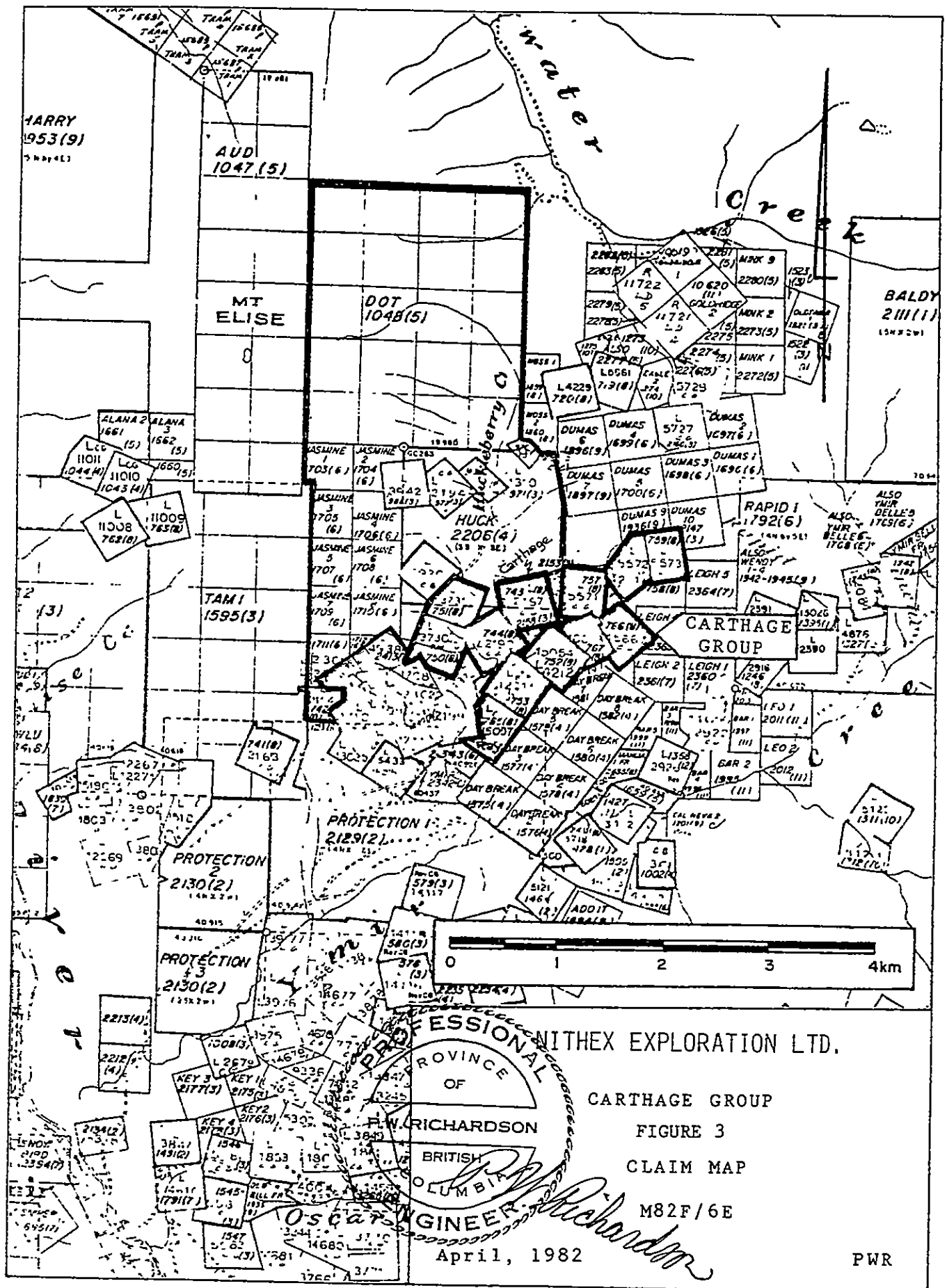
ACCESS MAP

FIGURE 2

NTS 82F/6

April, 1982

PWR



PROFESSIONAL ENGINEER

NITHEX EXPLORATION LTD.

CARTHAGE GROUP
 FIGURE 3
 CLAIM MAP
 M82F/6E

April, 1982

PWR

HISTORY OF THE CARTHAGE GROUP

The claims were first crown-granted between 1900 and 1905. Prospecting and exploration work was done by many parties over the years, but production of ore was never achieved. The most extensive exploration programme carried out on any of the claims was that done by the Ymir Good-Hope Mining Co. Their work, consisting of road building, surface trenching, drifting and underground diamond drilling, was carried out on the X-Ray Group between the years 1944 and 1950. At that time, the group consisted of the X-Ray, Wild Horse and Annie Maud Crown Granted mineral claims.

No major work was done on the claims until 1979, when the property was prospected by D. R. Cochrane.

Nitex Exploration Ltd. purchased the Carthage Group in 1980.

GEOLOGY OF THE CARTHAGE GROUP

The area within and surrounding the Carthage Claim Group is underlain by Triassic to Lower Jurassic argillites and schists of the Ymir Group (McAllister, 1951; Little, 1960) and by intrusive rocks of Cretaceous age which are part of the Nelson Batholith (Little, 1960). The Ymir Group consists of regionally metamorphosed dark grey, green, brown and black slates, shales,

argillites, limestones and quartzites (Drysdale, 1917; McAllister, 1951; Black, 1981). In places, the metamorphism has produced fine-grained mica and mica schists. Near the contacts with the Nelson intrusives, contact metamorphism has produced graphitic schists, andalusite-mica schists, biotite schists, talc schists and various grades of paragneissic rocks (McAllister, 1951).

The main body of the Nelson Intrusive underlying the claims is porphyritic granite (McAllister, 1951; Little, 1960). Small late-stage dikes and sills, ranging in composition from aplite to lamprophyre, are also common in the area (Drysdale, 1921).

The Ymir Group rocks strike roughly north-south with moderate to steep westerly dips. Near the intrusive contact there is much shearing and crumpling and, locally, the structure can be very complex (McAllister, 1951).

VEIN SYSTEMS AND ORE MINERALIZATION

Lead, zinc, copper, silver and gold mineralization occurs in small amounts in quartz veins which parallel the foliation and bedding of the Ymir Group sediments (Drysdale, 1917). Sulphide minerals observed on the property are sphalerite, chalcopyrite, galena, pyrite and minor pyrrhotite (Black, 1981). Quartz is the most common gangue mineral, although small quantities of

siderite have been reported. These siderite occurrences are most commonly noted near sphalerite mineralization (Black, 1981).

The quartz veins are controlled structurally by the foliation planes of the wall rocks. Consequently, since the predominant strike of the country rock is north-south, so too is the strike of the veins. Locally, however, this is not necessarily true. On the X-Ray Claim, the strike of the schistosity and, hence, the veins, is between 040° and 140° with dips ranging from 60° southeast to 17° southwest (Cockfield, 1936 as quoted in Cochrane, 1979).

EXPLORATION APPROACH

A baseline 1.5 km long was cut on a bearing of 025° from the Ray Claim to the Carthage Claim (Figures 3 & 4). Cross lines totalling 6.25 km have been cut 100 metres apart and flagged at 25 metre intervals.

A base map with a scale of 1:2,500 was prepared from available air photographs taken in 1980. On this base map, the grid was plotted and adjusted to fit the roads and topography.

In total, 250 reconnaissance soil samples were collected on the Carthage Claim Group grid, one at each picket. Thirty additional samples were taken from a road bank which runs along

the western portion of the claims. The samples were analysed by Acme Analytical Laboratories Ltd. of Vancouver, for copper, lead, zinc, silver and gold (Appendix II). Results were plotted on 1:2,500 maps, a separate map for each element, so the maps could be overlain to compare amounts of each element (see Figures 4, 5, 6, 7 and 8). Only those values which were considered to be anomalously high were plotted.

The reconnaissance soil sampling programme outlined many areas with anomalously high metal content in soils. Inspection of these areas revealed that most of the high values are in the vicinity of old workings or water courses from these workings. On the Beresford Claim, two anomalies were obtained and there were no old workings nearby which could account for the high metal content of the soil. Small detail sampling grids were established over both of these anomalies and a total of 70 follow-up samples were taken. The results obtained from this sampling are shown on Figures 9 and 10.

For the grid at 2+00S/7+25W, no specific anomalous area was delineated (Figure 9). There does not appear to be much correlation between high readings for the metals tested. This is not true, however, for the grid at 1+00S/5+25W, as anomalously high metal contents for gold, silver and copper coincide (Figure 10).

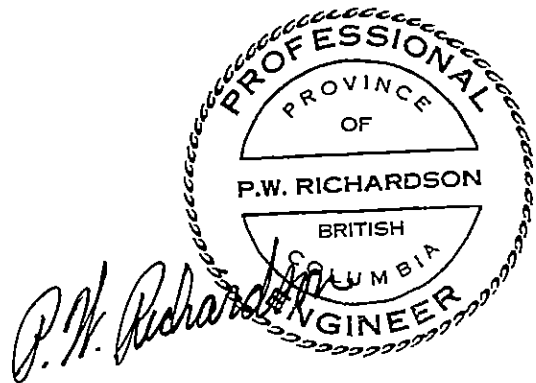
High background metal concentrations are present in both areas.

CONCLUSIONS

- 1) The reconnaissance geochemical sampling programme outlined areas with anomalously high metal concentrations in soils on the Carthage Claim Group.

- 2) Most of the anomalous values obtained could be accounted for by the presence of old workings and proximity to known mineralized zones.

- 3) On two anomalies, no cause for the high values has been determined and more work is required to fully evaluate the economic potential of these areas.



STATEMENT OF COSTS

RECONNAISSANCE & DETAIL SOIL ANALYSES:

350 samples @ \$6.00/sample		\$	2,100.00
-----------------------------	--	----	----------

LINE-CUTTING AND SAMPLING (detail grid only):

Scott Angus	4 days @ \$125.00/day	\$500.00	
Dave Murphy	4 days @ \$125.00/day	500.00	
Rick Black	4 days @ \$ 60.00/day	<u>240.00</u>	1,240.00

VEHICLE:

7 days @ \$30.00/day	210.00	
Fuel	<u>40.00</u>	250.00

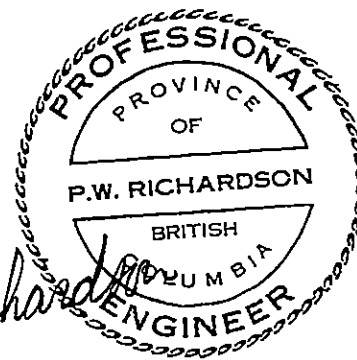
DRAFTING:

Dan Helgren	11 days @ \$30.00/day	330.00	
Rick Black	11 days @ \$60.00/day	660.00	
Rob Beynon	7 days @ \$45.00/day	<u>315.00</u>	1,305.00

REPORT PREPARATION:

8 days @ \$100.00/day	800.00	
P. W. Richardson,		
1 day @ \$300.00/day	<u>300.00</u>	1,100.00

TYPING, PHOTOCOPYING, MAP PRINTING, ETC.

355.00\$ 6,350.00 ✓

REFERENCES

1. COCHRANE, D.R., (1979)
"Prospecting Assessment Report on Portions of the Carthage Group and Gibraltar and Inkerman Reverted Crown Granted Mineral Claims".
2. COCKFIELD, W.E., (1936)
"Lode Gold Deposits of Ymir-Nelson Area, British Columbia. Canada Dept. of Mines, Geo. Surv. Memoir 191.
3. BLACK, R.G. (1981)
Unpublished memos and progress reports to Nithex Exploration Ltd.
4. DRYSDALE, C.W. (1917)
"Ymir Mining Camp, British Columbia".
Canada Dept. of Mines, Geo. Survey Memoir 94.
5. LITTLE, H.W. (1960)
"Nelson Map Area, West Half, British Columbia (82FW $\frac{1}{2}$)". G.S.C. Memoir 172.
6. McALLISTER, A.L. (1951)
"Ymir Map Area, British Columbia, G.S.C. Paper 51-4.
7. MINISTRY OF MINES ANNUAL REPORTS
1900 - 1903, 1905, 1917, 1919, 1930, 1934, 1944 - 1950
8. WALKER, J.F. (1934)
"Geology and Mineral Deposits of Salmo Map Area, British Columbia". Canada Dept. of Mines, Geo. Survey Memoir 172.
9. WOLFE, R. (1980)
"A summary of Exploration Potential of Claims in the YMIR GOLD CAMP" Private Report to Nithex Exploration Ltd.

STATEMENT OF AUTHOR'S QUALIFICATIONS

P. W. Richardson, Ph.D., P.Eng.

B.A. Sc. (1949) M.A. Sc. (1950) from the University of British Columbia in Geological Engineering.

Ph.D. (1955) from Massachusetts Institute of Technology in Economic Geology and Geochemistry.

1950-52: Mine Geologist at Sullivan Mine, B.C.

1955-66: Exploration Geologist with Dome Exploration (Canada) Limited, Toronto.

1966-68: Exploration Geologist with Amax Exploration Limited, Vancouver.

1968-78: Vancouver Manager for Newconex Canadian Exploration Ltd.

1978-

Jan.31/81: Principal of Richardson Geological Consulting Ltd.

Feb.1/81-

Present: Vice-President, Exploration of Nithex Exploration Ltd.

I have had an interest in and have practised exploration geochemistry from 1953 to the present time.



STATEMENT OF AUTHOR'S QUALIFICATIONS

R. G. Black, B.A. Sc.

- B.A.Sc. (1981) from the University of Calgary in Geological Engineering.
- 1971: Geological field assistant with Penarroya Canada Ltd.
- 1972 -
- 1974: Geological field assistant with Union Carbide Exploration Corporation Ltd., Vancouver.
- 1975: Geophysical field assistant with Amoco Canada Ltd.
- 1976: Geological field assistant with Shell Canada Resources Ltd., Calgary
- 1977: Geological field assistant with Uranerz Exploration and Mining Ltd., Calgary.
- 1978: Geophysical field assistant with HudBay Mining Ltd., Toronto.
- 1979: Geophysical field assistant with Western Geophysical Company of Canada, Calgary.
- 1980: Geological field assistant with PanOcean Oil Ltd., Calgary.
- 1981: Geologist with Nithex Exploration Ltd., Vancouver.

APPENDIX I

GEOCHEMICAL ANALYSIS CERTIFICATES

To: Nithex Exploration Ltd.,
1020 - 475 Howe St.,
Vancouver, B.C.

Attn.: Dr. P. Richardson

File No. 81-1691 A

Type of Samples Soil, Silts

Disposition _____

GEOCHEMICAL ASSAY CERTIFICATE

c.c. Mr. Rick Black, Salmo, B.C.

1	SAMPLE No.	Cu	Pb	Zn	Ag	Au															
																					1
																					2
																					3
																					4
																					5
																					6
																					7
																					8
																					9
																					10
																					11
																					12
																					13
																					14
																					15
	Car 001	42	33	165	.4	.005															16
	5N 0+25 W	42	38	145	.8	.005															17
	0+25 W1	41	36	165	.5	.005															18
	Car 5N 0+25 W2	40	34	150	.9	.005															19
																					20
	Car 5N 2+25 W	22	33	170	.5	.005															21
	2+25 W1	34	30	135	.4	.005															22
	2	35	28	125	.9	.005															23
	3	28	28	120	.7	.005															24
	4	20	28	150	.4	.005															25
	Car 5N 2+25 W5	24	30	150	.9	.005															26
																					27
	Wren 001	25	29	120	.5	.005															28
	002	25	20	130	.2	.005															29
	007	29	35	150	.4	.005															30
	009	25	20	120	.2	.005															31
	011	10	13	60	.2	.005															32
	Wren 012	28	24	145	.2	.005															33
																					34
	Swan 001	27	16	55	.2	.005															35
																					36
																					37
																					38
																					39
																					40

All reports are the confidential property of clients
All results are in PPM.

DIGESTION:.....

DETERMINATION:.....

DATE SAMPLES RECEIVED Oct. 23, 1981

DATE REPORTS MAILED Oct. 31, 1981

ASSAYER

Dean Toye

DEAN TOYE, B.Sc.
CHIEF CHEMIST
CERTIFIED B.C. ASSAYER



To: Nithex Exploration Ltd.,
1020 - 475 Howe St.,
Vancouver, B.C.

AGME ANALYTICAL LABORATORIES LTD.

Assaying & Trace Analysis
852 E. Hastings St., Vancouver, B.C. V6A 1R6
phone:253 - 3158

Attn.: Mr. P. Richardson

File No. 81-1554

GEOCHEMICAL ASSAY CERTIFICATE
c.c. Mr. Rick Black, Salmo, B.C.

Type of Samples Soils

Disposition _____

SAMPLE No.	Cu	Pb	Zn	Ag	Au				
5+05WC 0+60S	26	24	166	.8	.025				1
0+70	35	25	210	2.1	.005				2
0+80	43	27	166	1.0	.035				3
0+90	35	29	182	1.3	.030				4
1	31	25	158	.7	.010				5
1+10	28	26	142	.7	.005				6
5+05WC 1+20S	25	20	118	.8	.005				7
									8
5+15WC 0+60S	23	25	182	1.1	.005				9
0+70	31	26	260	1.2	.005				10
0+80	28	31	220	.5	.025				11
0+90	33	30	235	1.2	.010				12
1	28	26	225	1.4	.015				13
1+10	23	21	154	1.1	.005				14
5+15WC 1+20S	21	24	138	.5	.005				15
									16
5+25WC 0+60S	34	25	190	1.2	.005				17
0+70	40	27	200	.8	.005				18
0+80	47	27	172	1.7	.015				19
0+90	30	24	174	.8	.035				20
1	24	21	148	.8	.005				21
1+10	21	21	126	.5	.005				22
5+25WC 1+20S	27	20	144	.6	.005				23
									24
5+35WC 0+60S	24	24	156	.7	.005				25
0+70	28	23	182	.5	.005				26
0+80	31	26	170	.4	.005				27
0+90	29	25	142	1.0	.005				28
1	31	21	150	.7	.005				29
1+10	30	23	134	.6	.005				30
5+35WC 1+20S	25	23	166	.4	.005				31
									32
5+45WC 0+60S	28	25	174	.6	.005				33
0+70	27	23	170	.4	.005				34
0+80	27	30	162	.6	.005				35
0+90	32	23	152	.7	.005				36
1	21	19	150	.7	.005				37
1+10	31	20	144	.9	.005				38
5+45WC 1+20S	34	21	350	.4	.005				39
									40

All reports are the confidential property of clients
All results are in PPM.

DIGESTION:.....

DETERMINATION:.....

DATE SAMPLES RECEIVED Oct. 7, 1981

DATE REPORTS MAILED Oct. 27, 1981

ASSAYER

D. Toye

DEAN TOYE, B.Sc.
CHIEF CHEMIST
CERTIFIED B.C. ASSAYER

To: Nithex Exploration Ltd.,

File No. 81-1554

Type of Samples _____

Disposition _____

GEOCHEMICAL ASSAY CERTIFICATE

SAMPLE No.	Cu	Pb	Zn	Ag	Au					
6+95WC 1+60S	22	23	132	.5	.005					1
1+70	20	22	144	.5	.015					2
1+80	22	22	136	.5	.005					3
1+90	26	21	142	.3	.005					4
2	22	34	180	.6	.025					5
2+10	22	23	192	.3	.005					6
6+95WC 2+20 S	20	25	240	.7	.005					7
										8
7+05WC 1+60S	22	21	144	.4	.005					9
1+70	18	24	142	.5	.005					10
1+80	20	24	138	.5	.005					11
1+90	17	25	205	.3	.005					12
2	20	25	156	.8	.005					13
2+10	15	34	205	.3	.020					14
7+05WC 2+20S	14	31	166	.2	.005					15
										16
7+15WC 1+60S	23	23	146	.4	.035					17
1+70	23	26	168	.3	.005					18
1+80	27	25	148	.4	.005					19
1+90	22	24	150	.7	.060					20
2	17	29	200	.3	.005					21
2+10	28	29	154	.2	.005					22
7+15WC 2+20S	24	24	178	.7	.005					23
										24
7+25WC 1+60S	23	22	160	.5	.005					25
1+70	24	22	132	.5	.005					26
1+80	18	23	156	.4	.005					27
1+90	21	24	158	.6	.005					28
2	15	24	182	.5	.005					29
2+10	27	24	172	.7	.005					30
7+25WC 2+20S	22	25	225	.8	.005					31
										32
7+35WC 1+60S	23	25	136	.5	.045					33
1+70	19	24	152	.4	.005					34
1+80	21	23	170	.5	.005					35
1+90	17	22	150	.3	.005					36
2	17	23	184	.5	.005					37
2+10	29	20	152	1.0	.005					38
7+35WC 2+20S	27	23	184	.7	.005					39
										40

All reports are the confidential property of clients
All results are in PPM.

DIGESTION:.....

DETERMINATION:.....

DATE SAMPLES RECEIVED Oct. 7, 1981

DATE REPORTS MAILED Oct. 27, 1981

ASSAYER

Dean Toy

DEAN TOYE, B.Sc.
CHIEF CHEMIST
CERTIFIED B.C. ASSAYER



To: Nithex Exploration Ltd.,
1020 - 475 Howe St.,
Vancouver, B.C.

Assaying & Trace Analysis

852 E. Hastings St., Vancouver, B.C. V6A 1R6

phone:253 - 3158

OCT 26 1981

File No. 81-1611

Type of Samples Soils

cc : Rick Black, Salmo

GEOCHEMICAL ASSAY CERTIFICATE

Disposition

SAMPLE No.	Cu	Pb	Zn	Ag	Au						
R - 0+25	60	25	168	1.5	.005						1
0+50	56	15	98	.5	.005						2
0+75	92	23	180	.9	.005						3
1	33	25	235	1.6	.005						4
1+25	50	22	186	.8	.005						5
1+50	60	21	162	.8	.005						6
1+75	68	20	128	.7	.005						7
2	56	19	124	.3	.005						8
2+25	40	20	148	.7	.025						9
2+50	31	23	164	1.0	.005						10
2+75	34	22	154	.9	.005						11
3	43	23	140	.9	.005						12
3+25	62	22	150	.4	.005						13
3+50	35	29	194	.9	.005						14
3+75	36	24	170	.6	.005						15
4	39	23	156	.9	.005						16
4+25	36	26	225	1.0	.005						17
4+50	40	25	168	.6	.005						18
4+75	38	24	148	.6	.005						19
5	44	27	174	.9	.005						20
5+25	44	34	200	.8	.005						21
5+50	52	32	172	.9	.025						22
5+75	54	26	162	1.3	.015						23
6	130	19	86	.6	.005						24
6+25	39	23	140	.7	.005						25
6+50	31	24	200	.7	.005						26
6+75	46	28	124	.5	.020						27
7	44	29	168	.5	.020						28
7+25	41	22	148	.9	.005						29
7+50	43	24	150	.7	.010						30
7+75	44	23	172	.9	.005						31
8	36	23	172	.9	.005						32
8+25	52	16	112	.8	.005						33
8+50	74	36	260	1.3	.005						34
8+75	118	36	250	1.1	.005						35
9	48	22	138	.8	.005						36
R - 9+25	43	18	116	.3	.005						37
											38
											39
											40

All reports are the confidential property of clients
All results are in PPM.

DIGESTION:.....

DETERMINATION:.....

DATE SAMPLES RECEIVED Oct. 14, 1981

DATE REPORTS MAILED Oct. 23, 1981

ASSAYER

DEAN TOYE, B.Sc.
CHIEF CHEMIST
CERTIFIED B.C. ASSAYER



To: Nithex Exploration Ltd.,

ACME ANALYTICAL LABORATORIES LTD.

Assaying & Trace Analysis

852 E. Hastings St., Vancouver, B. C. V6A 1R6

phone: 253 - 3158

File No. 81-1611

Type of Samples

Disposition

GEOCHEMICAL ASSAY CERTIFICATE

SAMPLE No.	Cu	Pb	Zn	Ag	Au						
2											
R - 9+50	60	26	124	1.0	.005						1
9+75	34	23	138	.7	.005						2
10	41	23	142	.6	.005						3
10+25	37	22	124	.8	.005						4
10+50	38	23	154	.6	.005						5
10+75	38	23	142	.6	.005						6
11	26	26	132	.6	.005						7
11+25	29	26	110	.6	.005						8
11+50	30	25	142	.5	.005						9
11+75	39	26	152	.5	.005						10
12	38	29	130	.6	.005						11
12+25	39	35	162	.6	.005						12
12+50	36	46	186	.5	.005						13
12+75	39	31	132	.5	.005						14
13	42	32	122	.5	.005						15
13+25	58	22	104	.8	.005						16
13+50	60	25	116	.8	.005						17
13+75	64	26	132	.5	.005						18
14	56	21	134	.7	.005						19
14+25	72	54	156	1.0	.060						20
14+50	66	29	116	1.5	.010						21
14+75	39	29	270	.9	.005						22
R - 15	62	28	162	.8	.115						23
											24
1+40S 5+25W	23	24	166	.9	.005						25
5+50	60	30	560	.6	.005						26
5+75	18	27	140	.5	.005						27
6	23	25	144	.7	.005						28
6+25	23	26	146	.5	.005						29
6+50	18	26	130	.5	.005						30
6+75	18	24	138	.7	.005						31
1+40S 7 W	25	25	132	.8	.005						32
											33
											34
											35
											36
											37
											38
											39
											40

All reports are the confidential property of clients
All results are in PPM.

DIGESTION:.....

DETERMINATION:.....

DATE SAMPLES RECEIVED Oct. 14, 1981

DATE REPORTS MAILED Oct. 23, 1981

ASSAYER

DEAN TOYE, B.Sc.
CHIEF CHEMIST
CERTIFIED B.C. ASSAYER



To: Nithex Exploration Ltd.,
1020 - 475 Howe St.,
Vancouver, B.C.

File No. 81-1194

Type of Samples Soils

Disposition _____

GEOCHEMICAL ASSAY CERTIFICATE

SAMPLE No.	Cu	Pb	Zn	Ag	Au				
0 C 0	25	28	170	.6	.030				1
0+25E	15	43	305	.2	.005				2
0+50	20	22	185	.4	.005				3
0+75	30	30	160	.5	.005				4
1+50	40	64	810	1.7	.010				5
1+25	35	40	680	.8	.010				6
1+50	42	43	880	1.0	.015				7
1+75	29	35	675	.9	.005				8
0 C 2	30	40	500	.9	.015				9
ONC 0+25W	26	28	165	.4	.010				10
0+50	15	35	205	.4	.005				11
0+75	16	28	225	.7	.005				12
1	30	33	200	.5	.015				13
1+25	29	60	330	.6	.010				14
1+50	60	95	150	.6	.005				15
1+75	45	68	210	1.0	.005				16
2+25	70	30	170	1.4	.010				17
2+50	65	52	280	.7	.010				18
2+75	25	34	190	.5	.015				19
3	23	30	100	.8	.005				20
3+25	30	55	180	.2	.005				21
3+50	40	45	150	.1	.010				22
3+75	53	40	160	.3	.005				23
4	58	30	120	.6	.015				24
4+25	50	43	145	.5	.030				25
4+50	75	38	305	.7	.005				26
4+75	22	19	88	.2	.005				27
5	55	48	180	.8	.005				28
5+25	45	55	185	.5	.005				29
5+50	37	45	200	.5	.005				30
5+75	25	43	280	1.8	.005				31
6	25	30	165	.5	.005				32
6+25	25	28	140	.4	.005				33
6+50	25	23	185	.6	.005				34
6+75	38	33	150	.3	.030				35
7	25	33	170	.4	.005				36
ONC 7+25W	30	35	130	.5	.005				37
	1320	1481	9523						38
	37				345				39
									40

All reports are the confidential property of clients

All results are in PPM

DIGESTION: _____

DETERMINATION: _____

DATE SAMPLES RECEIVED Aug. 27, 1981

DATE REPORTS MAILED Sept. 2, 1981

ASSAYER

Dean Toye

DEAN TOYE, B.Sc.
CHIEF CHEMIST
CERTIFIED B.C. ASSAYER



To: Nithex Exploration Ltd.,

Assaying & Trace Analysis

852 E. Hastings St., Vancouver, B. C. V6A 1R6

phone: 253 - 3158

File No. 81-1194

Type of Samples

Disposition

GEOCHEMICAL ASSAY CERTIFICATE

2

SAMPLE No.	Cu	Pb	Zn	Ag	Au						
ONC 7+50W	40	25	155	.3	.005						1
7+75	32	42	185	.4	.065						2
8-50	29	30	270	.3	.010						3
8+25	32	29	250	.6	.005						4
ONC 8+50W	30	47	300	.5	.005						5
ISC 0	38	36	300	.7	.010						6
0+25E	32	33	305	.7	.020						7
0+50	47	45	725	3.2	.025						8
0+75	28	60	1700	1.0	.010						9
1	55	53	1250	1.9	.020						10
1+25	28	38	435	.4	.010						11
1+50	25	45	960	.5	.005						12
1+75	30	40	1200	.2	.025						13
2	25	45	760	.6	.020						14
2+25	20	40	715	.4	.045						15
ISC 2+50E	30	33	295	.3	.025						16
ISC 0+25W	75	62	2000	2.0	.015						17
0+50	31	26	235	.2	.005						18
0+75	25	30	145	.1	.015						19
1+25	27	28	180	.4	.005						20
1+50	20	30	160	.8	.005						21
1+75	33	29	140	.4	.005						22
2	28	27	145	.3	.010						23
2+25	27	28	165	.2	.010						24
2+50	28	23	160	.4	.005						25
4+25	20	27	290	1.7	.005						26
4+50	18	23	150	.4	.015						27
4+75	55	32	410	1.8	.005						28
5	15	28	135	.8	.005						29
5+25	25	18	140	1.2	.180						30
5+50	36	56	140	.4	.005						31
5+75	25	23	170	1.0	.005						32
6	24	20	105	.9	.005						33
6+25	22	20	168	1.1	.005						34
6+50	33	22	110	.6	.005						35
ISC 6+75W	50	40	154	1.2	.005						36
											37
											38
											39
											40

All reports are the confidential property of clients

All results are in PPM

DIGESTION:

DETERMINATION:

DATE SAMPLES RECEIVED Aug. 27, 1981

DATE REPORTS MAILED Sept. 2, 1981

ASSAYER

DEAN TOYE, B.Sc.
CHIEF CHEMIST



To: Nithex Exploration Ltd.,

ACME ANALYTICAL LABORATORIES LTD.

Assaying & Trace Analysis

852 E. Hastings St., Vancouver, B. C. V6A 1R6

phone:253 - 3158

12

File No. 81-1194

Type of Samples

Disposition

GEOCHEMICAL ASSAY CERTIFICATE

SAMPLE No.	Cu	Pb	Zn	Ag	Au				
ISC 7-25W	45	30	155	.6	.005				1
7-25	65	30	135	.7	.005				2
7-50	50	90	290	.4	.005				3
7-75	55	36	270	.5	.005				4
8	45	60	210	.4	.005				5
ISC 8-25W	56	95	350	.4	.005				6
0-25W	28	30	330	.7	.005				8
INC 0-25E	25	20	100	.5	.025				9
0-50	17	30	345	.2	.005				10
0-75	30	40	720	.4	.005				11
1-25	30	47	460	.5	.015				12
1-25	60	44	730	.9	.010				13
INC 1-50E	60	80	770	.2	.010				14
0-25W	80	70	270	2.3	.005				16
0-50	53	42	205	.6	.005				17
0-75	27	50	205	.2	.005				18
1-25	21	32	105	.3	.005				19
1-25	29	27	105	.2	.015				20
1-50	24	24	120	.6	.005				21
1-75	46	36	190	.9	.005				22
2-25	75	45	265	1.6	.005				23
2-25	30	36	200	.6	.005				24
2-50	25	40	170	.4	.015				25
2-75	27	36	170	.1	.005				26
3-25	25	24	270	.4	.005				27
3-25	20	25	160	.1	.005				28
3-50	24	33	160	.4	.005				29
2SC 3-75	32	25	125	.7	.005				30
4	25	26	110	.5	.005				31
2SC 4-25	15	25	135	.3	.005				32
INC 4-50W	15	26	110	.7	.005				33
0	45	44	1500	2.4	.005				35
0-25E	15	60	970	.9	.035				36
0-50	36	56	860	2.5	.030				37
0-75	37	40	635	1.0	.015				38
2SC 1-25E	28	35	590	1.1	.010				39
									40

All reports are the confidential property of clients
All results are in PPM.

DIGESTION:

DETERMINATION:

DATE SAMPLES RECEIVED Aug. 27, 1981

DATE REPORTS MAILED Sept. 2, 1981

ASSAYER

DEAN TOYE, B.Sc.
CHIEF CHEMIST
CERTIFIED B.C. ASSAYER



To: Nithex Exploration Ltd.,

ACME ANALYTICAL LABORATORIES LTD.

Assaying & Trace Analysis

852 E. Hastings St., Vancouver, B.C. V6A 1R6

phone: 253 - 3158

File No. 81-1194

Type of Samples _____

Disposition _____

GEOCHEMICAL ASSAY CERTIFICATE

SAMPLE No.	Cu	Pb	Zn	Ag	Au						
2SC 1+25E	28	52	2000	.8	.005						1
2+25	26	40	700	1.0	.010						2
2+75	33	47	660	.9	.075						3
2SC 3+25E	25	43	915	2.3	.015						4
2SC 0+25W	40	70	2200	2.6	.060						5
0+50	23	60	1100	1.4	.015						6
0+75W	33	70	760	1.2	.010						7
1+25E	30	190	1600	7.1	.055						8
1+75E	30	50	700	.8	.015						9
2+25E	22	36	510	.7	.025						10
2+50E	20	55	510	.8	.015						11
3+75W	29	30	185	.6	.005						12
4+25E	20	45	190	.3	.005						13
4+25W	20	26	165	.6	.005						14
4+50E	14	28	195	.3	.005						15
4+75	16	25	160	.5	.005						16
5+25	22	25	145	.9	.005						17
5+25	24	29	200	.6	.005						18
5+50	20	30	155	.8	.010						19
5+75	28	26	155	.6	.005						20
6+25	34	28	130	.8	.005						21
6+25	26	46	150	.9	.005						22
6+50	20	32	145	.7	.010						23
6+75	18	35	150	.5	.370						24
7+25	25	28	165	.7	.010						25
7+25	19	24	190	.9	.015						26
7+50	20	25	175	.6	.010						27
7+75	25	28	210	.5	.020						28
2SC 8+25W	24	30	135	.4	.005						29
2NC 0+25E	75	45	445	1.1	.005						30
0+50	54	45	295	1.0	.005						31
0+75	30	62	365	.9	.005						32
2NC 1+25E	40	45	275	1.0	.120						33
3SC 0+25E	33	48	850	1.2	.050						34
0+25E	32	35	550	1.4	.005						35
3SC 0+50E	70	47	805	1.3	.030						36
											37
											38
											39
											40

All reports are the confidential property of clients.
 All results are in PPM
 DIGESTION: _____
 DETERMINATION: _____

DATE SAMPLES RECEIVED Aug. 27, 1981
 DATE REPORTS MAILED Sept. 2, 1981
 ASSAYER Dean Toy
 DEAN TOYE, B.Sc.



To: Nithex Exploration Ltd.,

ACME ANALYTICAL LABORATORIES LTD.

Assaying & Trace Analysis

852 E. Hastings St., Vancouver, B. C. V6A 1R6

phone: 253-3158

File No. 81-1194

Type of Samples

Disposition

GEOCHEMICAL ASSAY CERTIFICATE

5

SAMPLE No.	Cu	Pb	Zn	Ag	Au				
3SC 0+75E	35	43	835	.4	.015				1
1	48	48	740	1.0	.005				2
1+25	27	40	585	.6	.010				3
1+50	28	37	485	.4	.015				4
1+75	50	55	924	1.1	.005				5
2	74	53	930	4.5	.005				6
2+25	28	35	540	1.0	.005				7
2+50	30	33	590	1.5	.005				8
2+75	25	35	535	1.2	.005				9
3	20	31	340	.4	.005				10
3+25	13	33	340	.5	.005				11
3SC 3+50E	15	37	235	.4	.035				12
									13
3SC 0+25W	31	45	590	.8	.010				14
0+50	33	47	715	1.4	.015				15
0+75	50	30	225	1.3	.005				16
1	22	30	280	.8	.005				17
1+25	20	33	360	.7	.015				18
1+50	35	52	365	.9	.010				19
3+50	29	30	140	.3	.005				20
3+75	14	32	160	.1	.005				21
4	14	33	150	.2	.005				22
4+25	15	28	150	.1	.005				23
4+50	12	25	185	.1	.005				24
4+75	17	29	155	.1	.005				25
5	22	30	175	.9	.015				26
5+25	35	36	283	.8	.010				27
5+50	28	28	105	.8	.005				28
5+75	28	32	200	.5	.005				29
6	35	33	135	.5	.005				30
6+25	15	29	135	.4	.005				31
6+50	14	30	100	.4	.005				32
6+75	15	30	135	.3	.005				33
7	12	32	120	.5	.010				34
7+25	16	25	270	.6	.005				35
7+50	23	36	145	.5	.005				36
7+75	35	38	210	.6	.005				37
3SC 8 W	28	43	203	.3	.005				38
									39
									40

All reports are the confidential property of clients

All results are in PPM

DIGESTION:

DETERMINATION:

DATE SAMPLES RECEIVED Aug. 27, 1981

DATE REPORTS MAILED Sept. 2, 1981

ASSAYER D. Toy

DEAN TOYE, B.Sc.
CHIEF ANALYST



To: Nithex Exploration Ltd.,

ACME ANALYTICAL LABORATORIES LTD.

Assaying & Trace Analysis

852 E. Hastings St., Vancouver, B. C. V6A 1R6

phone:253 - 3158

File No. 81-1194

Type of Samples

Disposition

GEOCHEMICAL ASSAY CERTIFICATE

6

Table with columns: SAMPLE No., Cu, Pb, Zn, Ag, Au, and a column for sample numbers 1-40. Rows include sample IDs like 4SC 0, 4SC 0+25E, etc., and their corresponding assay values.

All reports are the confidential property of clients

All results are in PPM

DIGESTION:

DETERMINATION:

DATE SAMPLES RECEIVED Aug. 27, 1981

DATE REPORTS MAILED Sept. 2, 1981

ASSAYER [Signature]

DEAN TOYE, B.Sc. CHIEF CHEMIST



To: Nithex Exploration Ltd.,

ACME ANALYTICAL LABORATORIES LTD.

Assaying & Trace Analysis

852 E. Hastings St., Vancouver, B.C. V6A 1R6

phone:253 - 3158

File No. 81-1194

Type of Samples

Disposition

GEOCHEMICAL ASSAY CERTIFICATE

SAMPLE No.	Cu	Pb	Zn	Ag	Au					
6SC 1+75E	36	31	205	.7	.005					1
2	22	30	210	.4	.005					2
2+25	12	28	165	.2	.005					3
2+50	12	26	145	.3	.005					4
2+75	12	28	195	.2	.005					5
3	18	28	165	.3	.010					6
3+25	14	26	170	.1	.005					7
6SC 3+50E	19	30	190	.1	.005					8
										9
7SC 1+25E	25	32	480	.6	.005					10
1+50	30	35	660	.6	.005					11
1+75	22	35	260	.3	.005					12
2	18	33	300	.4	.005					13
2+25	25	30	190	.6	.005					14
2+50	25	30	145	.1	.005					15
2+75	24	35	170	.1	.005					16
3	19	62	170	.1	.005					17
3+25	29	40	130	.1	.005					18
7SC 3+50E	28	30	180	.2	.005					19
										20
8SC 0+25E	15	30	255	.4	.005					21
0+50	17	37	250	.4	.005					22
0+75	22	32	200	.5	.005					23
1	23	30	240	.4	.005					24
1+25	14	33	785	.2	.005					25
1+50	13	33	440	.2	.005					26
1+75	18	33	190	.4	.005					27
2	25	36	155	.3	.005					28
2+25	23	35	115	.3	.005					29
2+50	20	40	125	.5	.005					30
2+75	22	32	125	.1	.005					31
3	24	36	155	.2	.010					32
8SC 3+25E	28	33	215	.5	.005					33
										34
										35
										36
										37
										38
										39
										40

All reports are the confidential property of clients.
All results are in PPM.

DIGESTION: _____
DETERMINATION: _____

DATE SAMPLES RECEIVED Aug. 27, 1981

DATE REPORTS MAILED Sept. 2, 1981

ASSAYER Dean Toye

DEAN TOYE, B.Sc.

2NC 0		49	40	262	3	.005					19
0+25 W		30	32	248	8	.005					20
0+50		48	33	134	7	.005					21
0+75		30	44	172	3	.005					22
1		36	34	164	4	.005					23
1+25		20	60	227	2	.005					24
1+50		64	39	252	1.0	.040					25
1+75		31	38	243	5	.005					26
2	N.S.										27
2+25		22	42	324	6	.006					28
2+50		29	32	134	5	.005					29
2+75		30	29	202	1	.005					30
3		27	28	126	1	.005					31
3+25		25	27	130	4	.005					32
3+50		31	26	127	2	.005					33
3+75		27	32	171	7	.005					34
2NC 4 W		35	39	164	7	.005					35
											36
											37
											38
											39
											40

All reports are the confidential property of clients
All results are in PPM.

DIGESTION:.....

DETERMINATION:.....

DATE SAMPLES RECEIVED Sept. 21, 1981

DATE REPORTS MAILED Oct. 1, 1981

ASSAYER

D.K. Toy

DEAN TOYE, B.Sc.
CHIEF CHEMIST
CERTIFIED P.C. ASSAYER

To: Nithex Exploration Ltd.,

File No. 81-1408

Type of Samples _____

Disposition _____

GEOCHEMICAL ASSAY CERTIFICATE

8

SAMPLE No.	Cu	Pb	Zn	Ag	Au					
3NC 0	34	35	174	.4	.005					1
0+25 E	76	65	425	1.3	.005					2
0+50	54	58	223	.4	.005					3
0+75	56	62	750	1.5	.005					4
3NC 1 E	42	38	320	1.3	.005					5
										6
3NC 0+25 W	48	45	295	.6	.005					7
0+50	43	48	200	.3	.005					8
0+75	40	51	166	1.1	.005					9
1	21	33	187	.5	.005					10
1+25	28	43	490	.9	.005					11
1+50	31	40	168	.3	.005					12
1+75	36	50	174	.3	.005					13
2	21	34	250	.1	.005					14
2+25	25	38	283	.3	.005					15
2+50	34	36	262	.3	.005					16
2+75	35	32	162	.5	.005					17
3NC 3 W	20	31	120	.3	.005					18
										19
4NC 0	43	47	160	.2	.015					20
0+25 E	62	96	180	.4	.005					21
4NC 0+50 E	47	60	175	.3	.005					22
										23
4NC 0+25 W	35	50	166	.3	.015					24
0+50	39	94	323	.5	.030					25
0+75	37	45	180	.4	.005					26
1	36	43	130	.3	.005					27
1+25	52	50	300	.6	.005					28
1+50	36	62	220	1.1	.015					29
1+75	19	36	180	.1	.005					30
2	21	50	170	.1	.015					31
2+25	25	37	175	.1	.005					32
2+50	27	38	184	.2	.005					33
2+75	42	40	208	.4	.005					34
3	29	50	216	.2	.005					35
3+25	21	28	165	.5	.005					36
4NC 3+50 W	23	27	205	.3	.005					37
										38
										39
										40

All reports are the confidential property of clients
All results are in PPM.

DIGESTION: _____

DETERMINATION: _____

DATE SAMPLES RECEIVED Sept. 21, 1981

DATE REPORTS MAILED Oct. 1, 1981

ASSAYER SKW

DEAN TOYE, B.Sc.
CHIEF CHEMIST
CERTIFIED B.C. ASSAYER

To: Nithex Exploration Ltd.,

ACME ANALYTICAL LABORATORIES LTD.

Assaying & Trace Analysis

852 E. Hastings St., Vancouver, B. C. V6A 1R6

phone: 253-3158

File No. 81-1408

GEOCHEMICAL ASSAY CERTIFICATE

Type of Samples _____

Disposition _____

9

SAMPLE No.	Cu	Pb	Zn	Ag	Au						
5NC 0	46	41	193	1.2	.005						
0+25 E	26	37	218	.3	.005						1
0+50	30	56	176	.6	.005						2
0+75	27	36	115	.4	.005						3
1	35	45	215	.3	.005						4
1+25	49	56	238	.2	.005						5
5NC 1+50 E	52	41	233	.4	.005						6
											7
5NC 0+25 W	43	12	168	.5	.065						8
0+50	33	84	638	1.2	.005						9
0+75	29	41	392	.7	.005						10
1	23	36	147	.4	.030						11
1+25	31	33	144	.4	.005						12
1+50	24	36	131	.6	.015						13
1+75	58	35	158	.5	.005						14
2	21	36	150	.2	.005						15
2+25	20	39	215	.2	.005						16
2+50	54	37	152	.5	.210						17
2+75	30	32	133	.5	.005						18
3	31	28	170	.1	.005						19
3+25	24	30	430	.3	.005						20
3+50	23	34	205	.2	.005						21
3+75	27	30	154	.7	.005						22
5NC 4 W	22	25	168	.2	.030						23
											24
6NC 0	33	42	366	.6	.005						25
0+25 E	40	40	410	.4	.005						26
0+50	23	34	250	.2	.005						27
0+75	21	32	408	.3	.005						28
1	35	35	188	.3	.005						29
1+25	41	50	164	.1	.005						30
6NC 1+50 E	43	42	180	.4	.005						31
											32
6NC 0+25 W	35	54	265	.3	.005						33
0+50	36	38	254	.5	.005						34
0+75	27	58	360	.5	.005						35
1	23	30	177	1.0	.005						36
6NC 1+25 W	29	43	164	.4	.005						37
											38
											39
											40

All reports are the confidential property of clients
All results are in PPM.

DIGESTION:

DETERMINATION:

DATE SAMPLES RECEIVED Sept. 21, 1981

DATE REPORTS MAILED Oct. 1, 1981

ASSAYER DEAN TOYE

DEAN TOYE, B.Sc.

To: Nithex Exploration Ltd.,

File No. 81-1408

Type of Samples _____

Disposition _____

GEOCHEMICAL ASSAY CERTIFICATE

10

SAMPLE No.	Cu	Pb	Zn	Ag	Au					
6NC 1+50 W	24	27	128	1.2	.005					1
1+75	31	31	166	1.3	.005					2
2	26	42	237	.6	.005					3
2+25	45	50	160	.2	.010					4
2+50	17	27	144	.3	.005					5
2+75	21	32	123	.2	.005					6
3	32	31	166	.4	.005					7
6NC 3+25 W	21	30	163	.6	.005					8
										9
7NC 0	26	29	234	.5	.005					10
0+25 E	24	30	288	.8	.005					11
7NC 0+50 E	54	29	650	.7	.005					12
										13
7NC 0+25 W	38	31	162	.5	.005					14
0+50	28	32	121	.5	.005					15
0+75	18	25	107	.2	.010					16
1	19	28	141	.4	.005					17
1+25	28	31	145	.7	.005					18
1+50	29	30	141	.8	.010					19
1+75	35	29	154	1.2	.005					20
2	27	36	174	.6	.005					21
7NC 2+25 W	25	30	168	.5	.005					22
										23
										24
										25
										26
										27
										28
										29
										30
										31
										32
										33
										34
										35
										36
										37
										38
										39
										40

All reports are the confidential property of clients
All results are in PPM.

DIGESTION:.....

DETERMINATION:.....

DATE SAMPLES RECEIVED Sept. 21, 1981

DATE REPORTS MAILED Oct. 1, 1981

ASSAYER *W. J. Toy*

DEAN TOYE, B.Sc.
CHIEF CHEMIST

APPENDIX II

GEOCHEMICAL ANALYSIS METHODS

ACME ANALYTICAL LABORATORIES LTD.

852 East Hastings Street,
Vancouver, B.C.

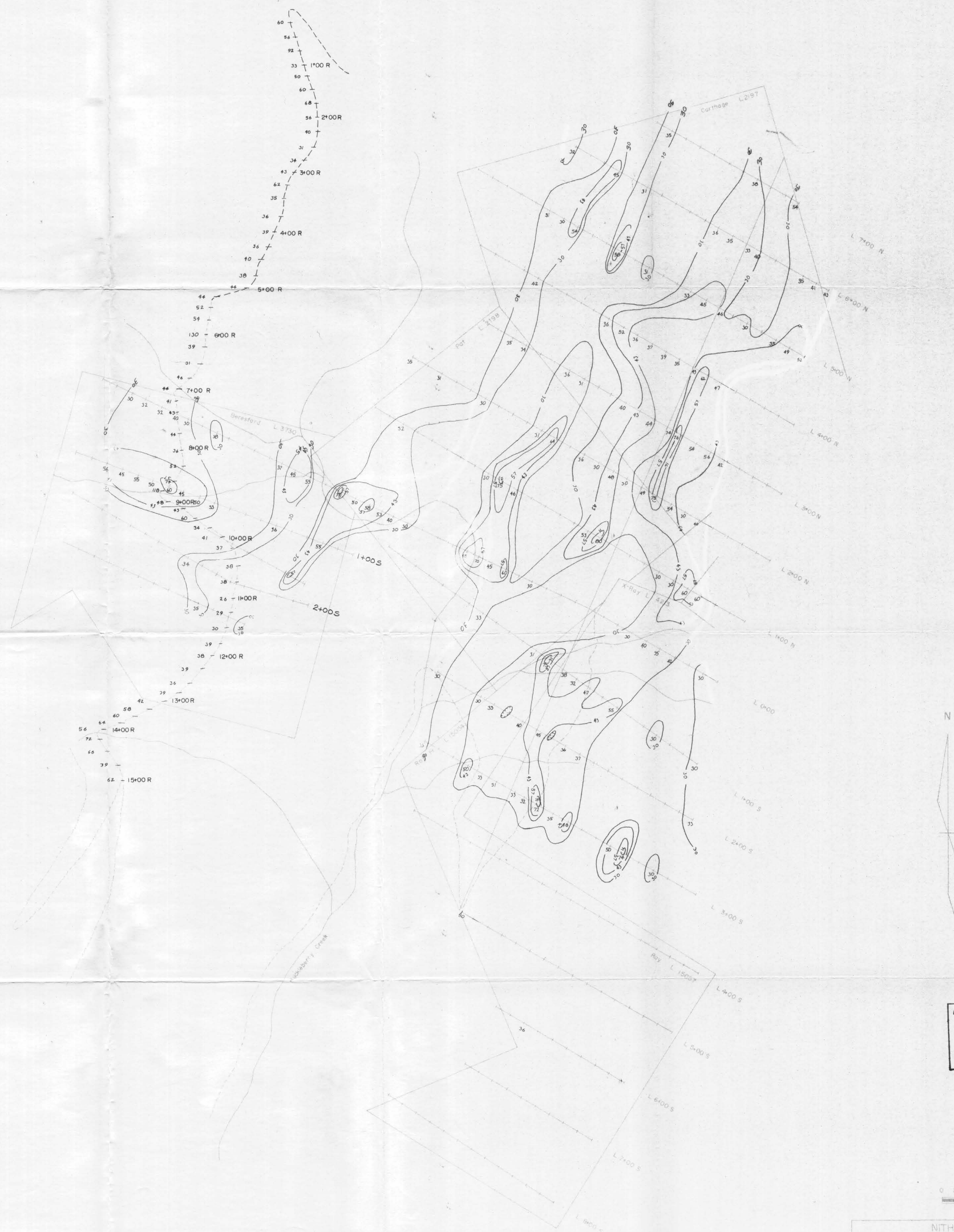
GEOCHEMICAL ANALYSES PROCEDURE

Copper, Lead, Zinc and Silver

The soil samples are prepared by drying the sample at 60°C, and sieving the sample to minus 80 mesh. Samples weighing 0.5 grams are digested in hot dilute aqua regia in a boiling water bath and diluted to 10 ml with demineralized water. The extracted solution is analyzed by atomic absorption for Cu, Pb, Zn and Ag.

Gold

The samples are ignited overnight at 600°C. The minus 80 mesh portion is ground in a ring grinder and 10 grams are digested with dilute hot aqua regia. The clear solution is extracted with methyl isobutyl ketone. Gold is determined in the methyl isobutyl ketone extract by atomic absorption.



MIN. RESOURCES BRANCH
ASSESSMENT REPORT
10,386



LEGEND
 --- creek
 --- road
 --- soil sample line with results in ppm
 56

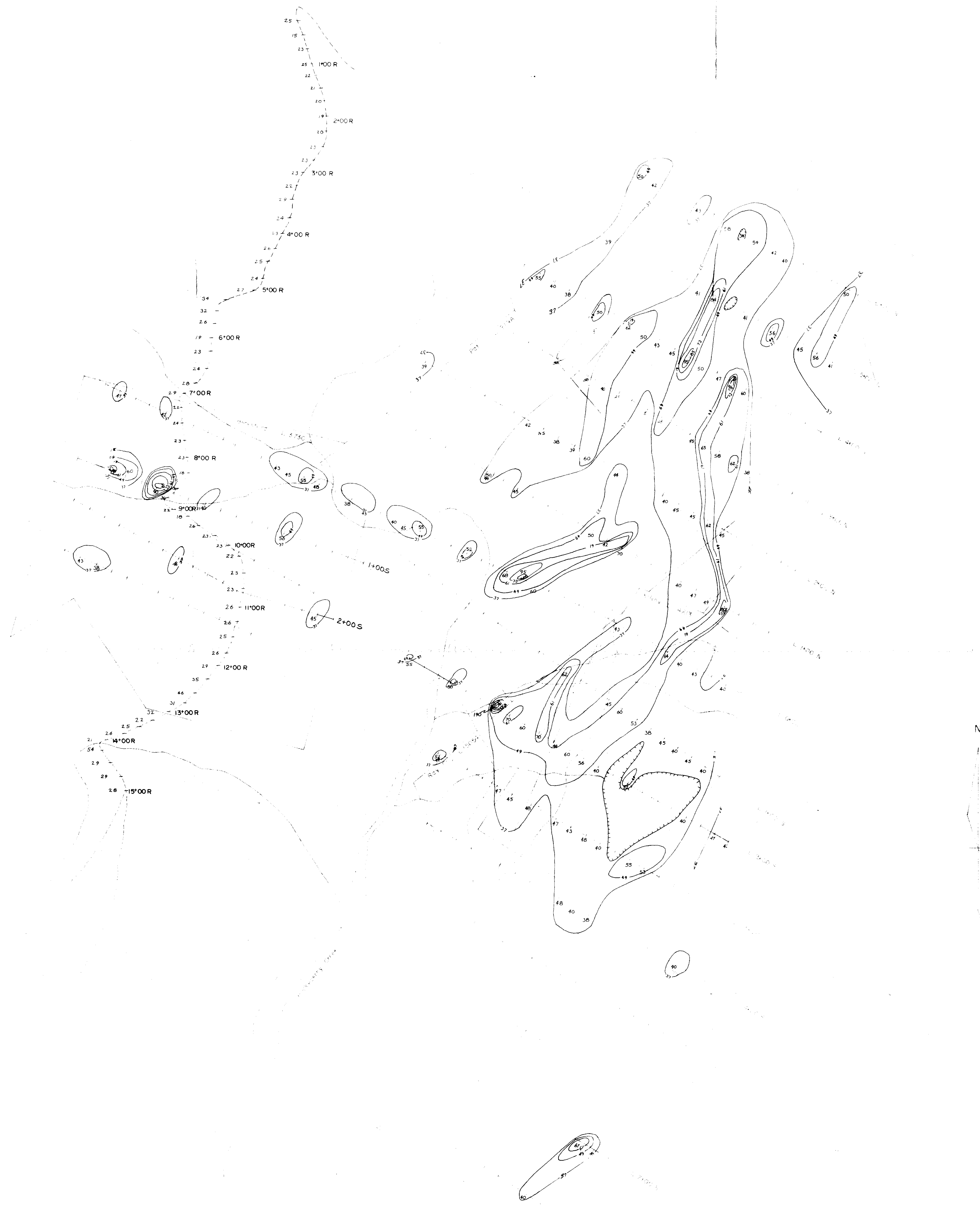
contour interval = 14 ppm



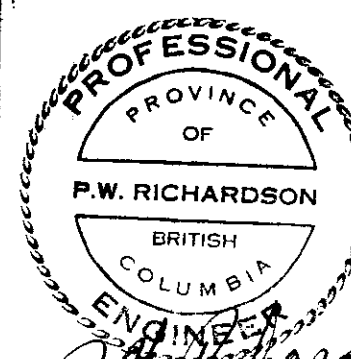
NITHE X EXPLORATION LTD.			
Drawn by	DH	Traced by	RB
DATE	1982	DATE	1981
APR, 1982		OCT, 1981	
GEOCHEMICAL RESULTS FOR COPPER CARTHAGE GROUP			

FIGURE 4

In accompany assessment report entitled "THE GEOCHEMISTRY PROGRAMME ON THE CARTHAGE CLAIM GROUP" by P.W. Richardson, P.Eng.



MINERAL RESOURCES BRANCH
ASSESSMENT REPORT
10386



P.W. Richardson

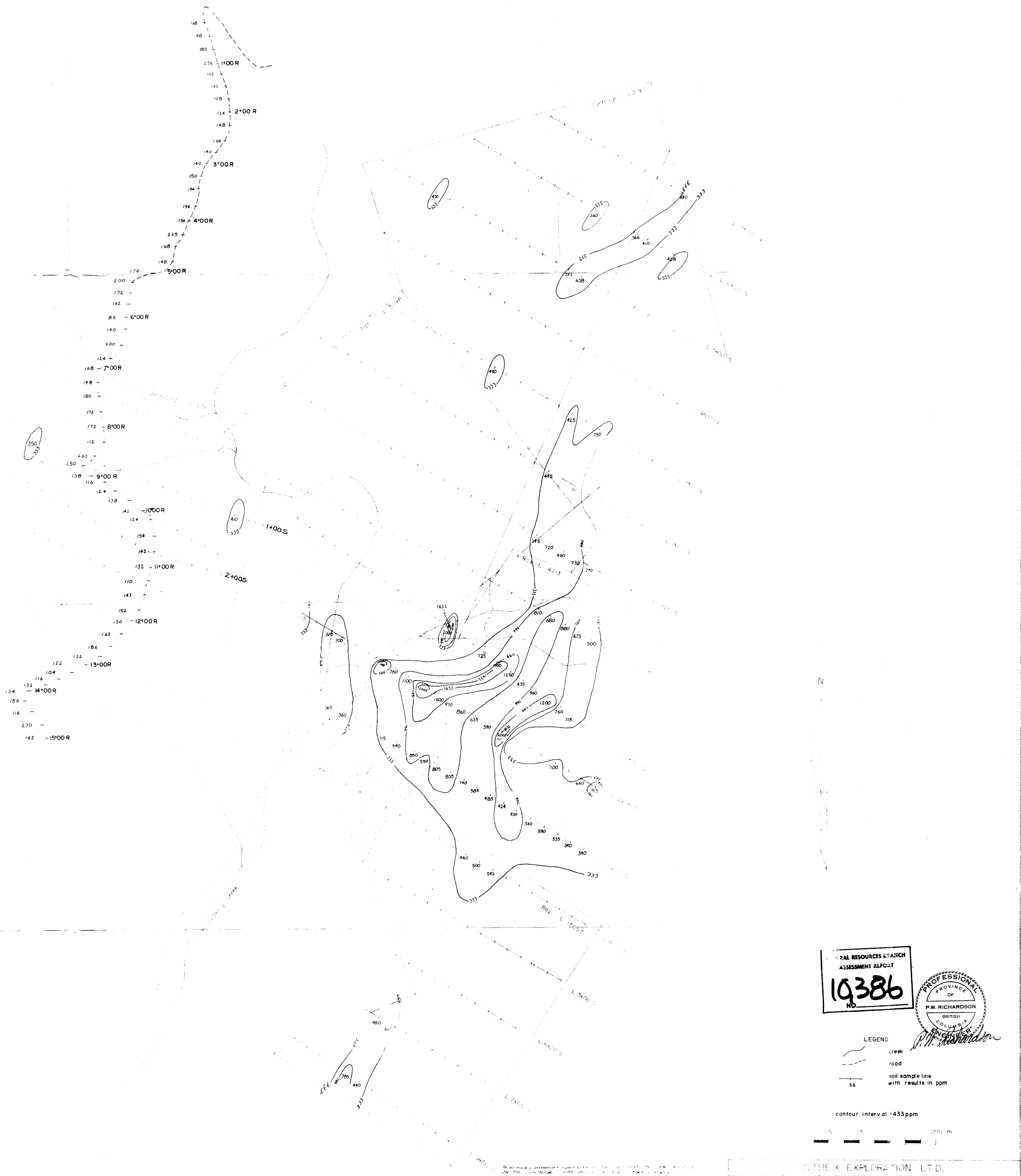
LEGEND

- creek
- road
- soil sample line with results in ppm

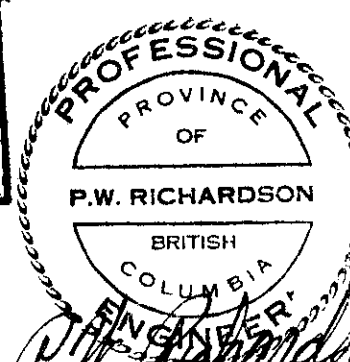
contour interval = 12 ppm

NITHEX EXPLORATION LTD.	
Drawn by DH	Traced by RB
Scale 1:5000	
APR, 1982	OCT, 1981
GEOCHEMICAL RESULTS FOR LEAD CARTHAGE GROUP	

FIGURE 5



MINERAL RESOURCES BRANCH
ASSESSMENT REPORT
10386
NO.



LEGEND

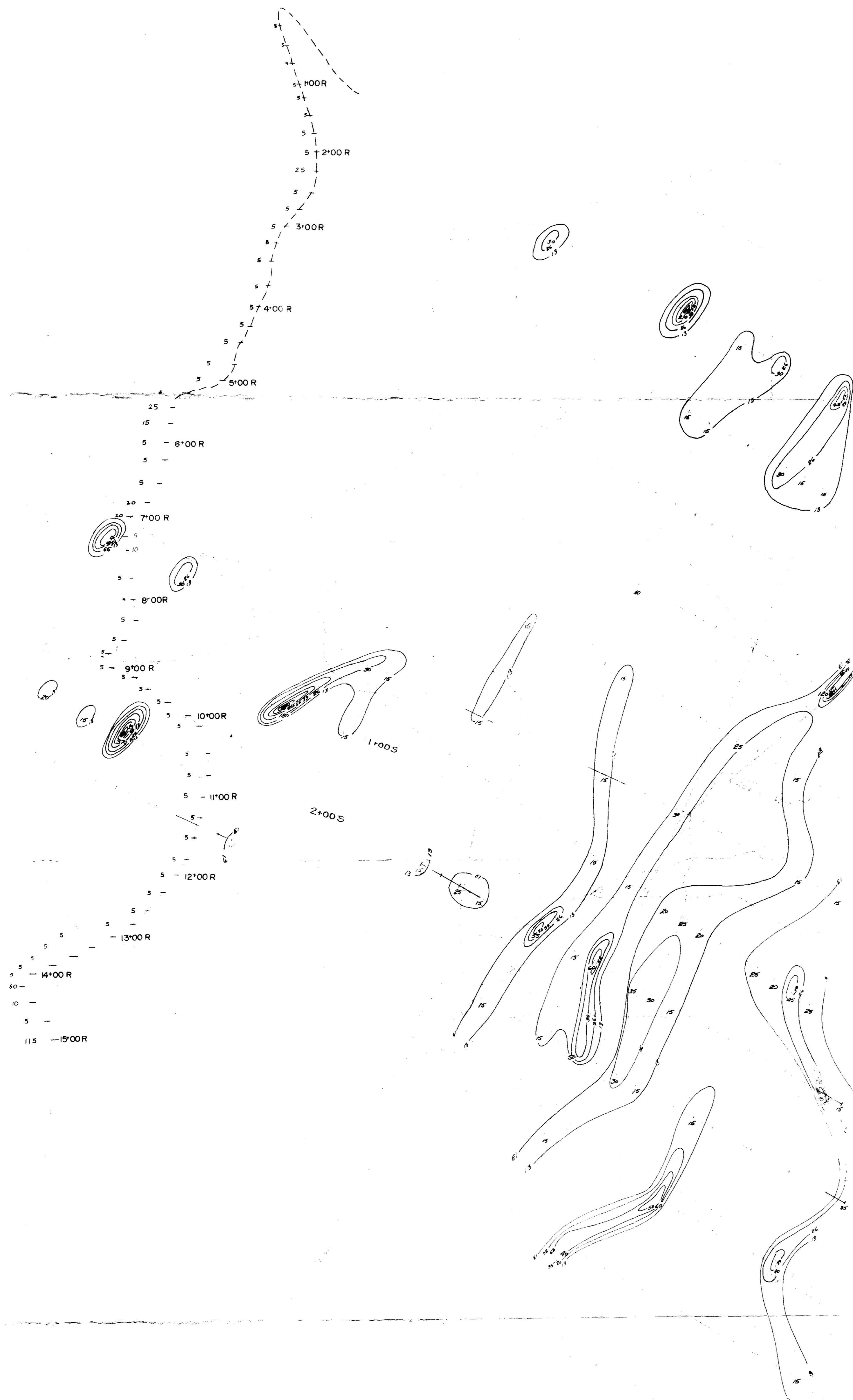
- creek
- road
- soil sample line with results in ppm

contour interval = 433 ppm



THE X EXPLORATION LTD.

DATE	DH	RB
APR, 1982	OCT, 1981	
GEOCHEMICAL RESULTS FOR ZINC CARTHAGE GROUP		



10386
NO.



LEGEND
 creek
 road
 soil sample line
 with results in ppb

contour interval = 13 ppb

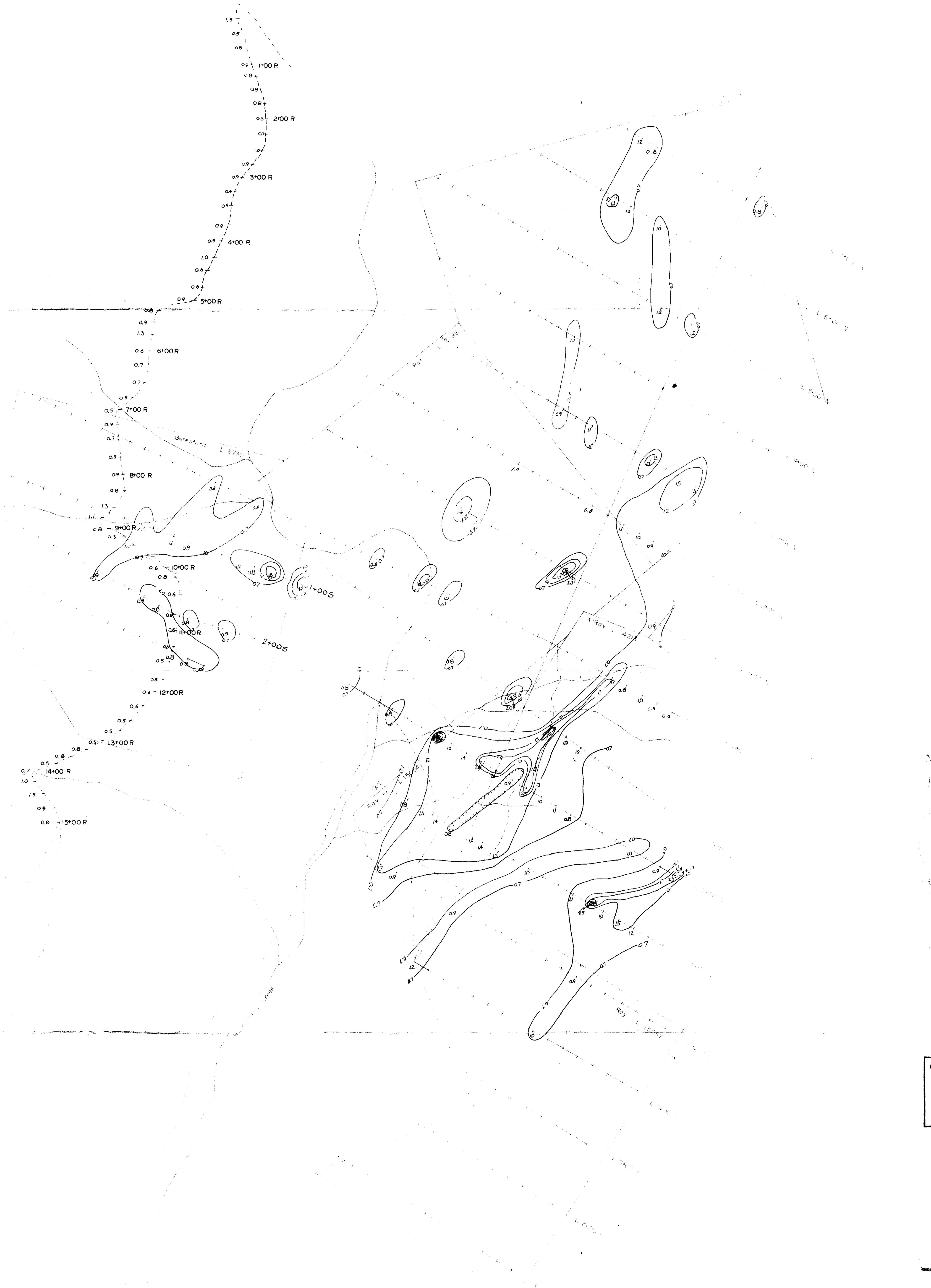
To accompany assessment report entitled "THE GEOCHEMISTRY PROGNOSIS OF THE CARTHAGE CLAY GROUP" by P.W. Richardson, P.Eng.

APR 1982 OCT 1981

RB

GEOCHEMICAL RESULTS FOR GOLD
 CARTHAGE GROUP

FIGURE 7



MINERAL RESOURCES BRANCH
ASSESSMENT REPORT
10386
NO.



- LEGEND
- creek
 - road
 - soil sample line with results in ppm

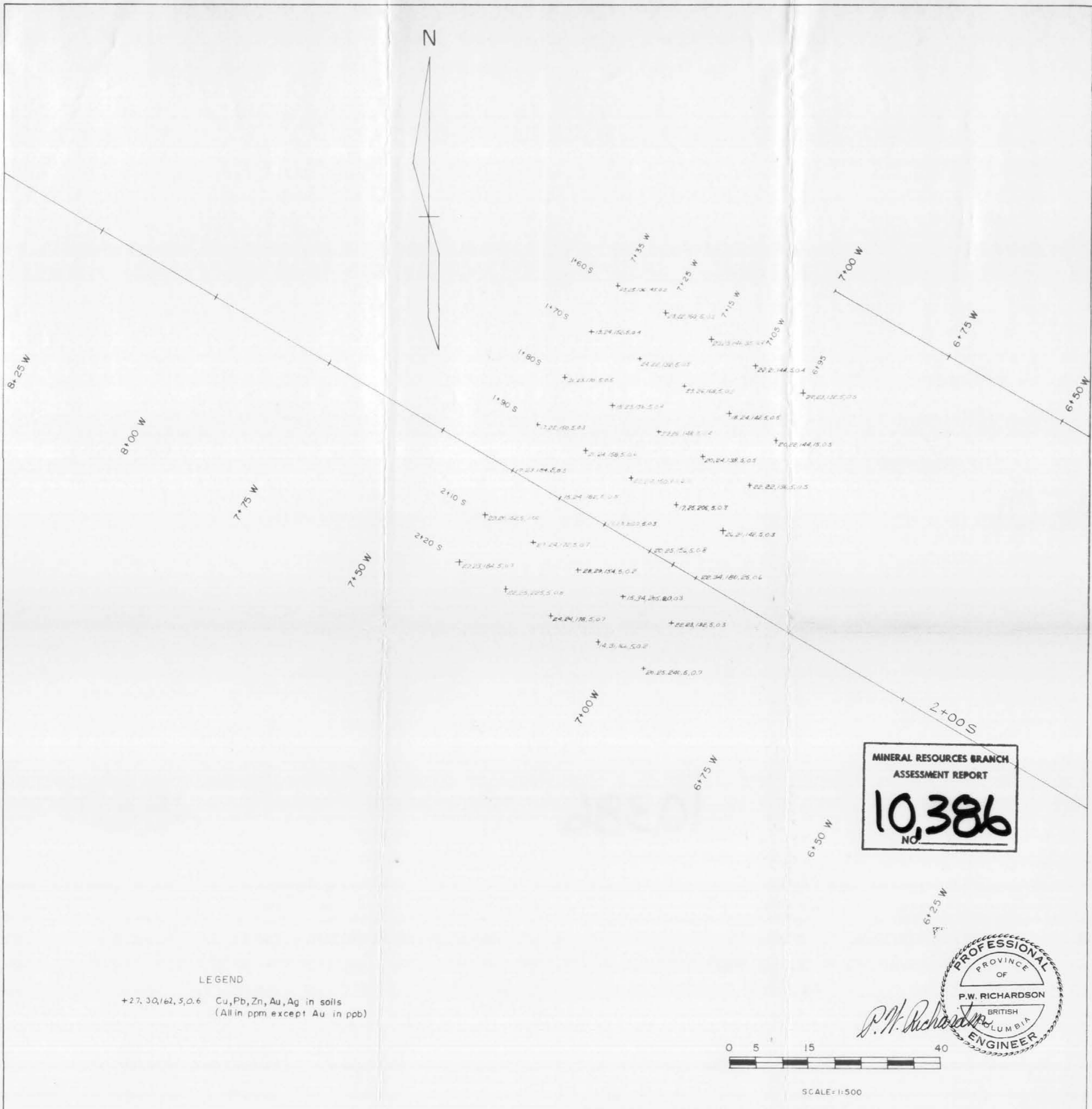
contour interval = 0.5 ppm



To accompany Assessment Report entitled "THE GEOCHEMISTRY PROGRAMME ON THE CARTHAGE QUARTZ VEIN" by R.W. Richardson, P. Eng.

N THE K EXPLORATION LTD.	
Drawn by: RB	Checked by: RB
DATE: APR, 1982	DATE: OCT, 1981
GEOCHEMICAL RESULTS FOR SILVER CARTHAGE GROUP	

FIGURE 8

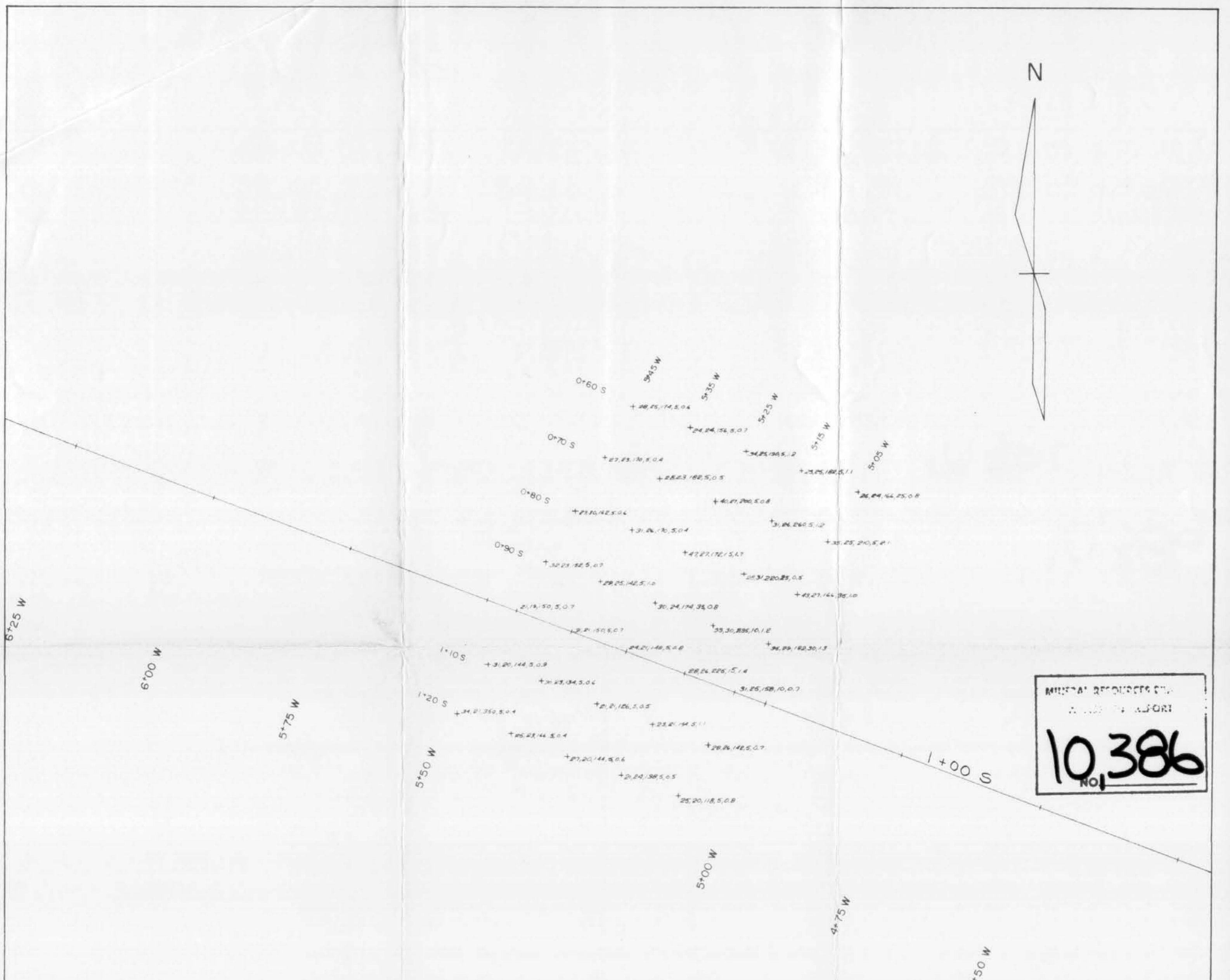


LEGEND

+27.30/162.5/0.6 Cu, Pb, Zn, Au, Ag in soils
(All in ppm except Au in ppb)

To accompany assessment report entitled "THE SEDIMENTARY PROGRAMME ON THE CARTHAGE CLAIM GROUP" by P.W. Richardson, P.Eng.

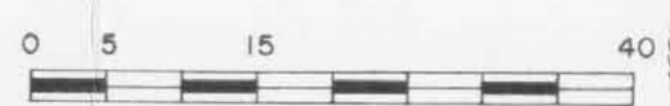
NITHE X EXPLORATION LTD.			
Drawn by	DH	Traced by	RB
revised	date		
APR, 1982	OCT, 1981		
			DETAIL SOIL SAMPLING 2+00 S/7+25 W CARTHAGE GROUP
			FIGURE 9



MINEVAL RESOURCES LTD.
 10,386
 NO. 1

LEGEND

+ 27.30, 162, 5.0.6 Cu, Pb, Zn, Au, Ag in soils
 (All in ppm except Au in ppb)



SCALE = 1:500

P.W. Richardson
 PROFESSIONAL ENGINEER
 PROVINCE OF BRITISH COLUMBIA

NITHE X EXPLORATION LTD.

Drawn by	DH	Traced by	RB
revised	date		
APR, 1982	OCT, 1981		

DETAIL SOIL SAMPLING 1+00 S/5+25 W
 CARTHAGE GROUP

FIGURE 10

*To comply with the requirements of THE
 SEDIMENTARY FACSIMILE IN THE
 LANTHIER L-1411 SCALE by
 P.W. Richardson P.E.*